

# MID CONTINENT WELL LOGGING SERVICE, INC.

CONTINUOUS WELL LOGGING / COMPLETE HYDROCARBON ANALYSIS

2222 WESTPARK DR. STE. A  
NORMAN, OK 73069  
OFFICE (405) 360-7333  
OPERATIONS (405) 590-3655  
SALES (405) 203-9989

Scale 1:240 (5"=100') Imperial  
Measured Depth Log

Well Name: Ruby 3119 2-20H      Sandridge Energy  
Location: 20-T31S-R19W Comanche County, Kansas  
License Number: API# 15033216610000      Region: COMANCHE COUNTY,  
Spud Date: 08/18/2012      Drilling Completed: 09/01/2012  
Surface Coordinates: 200' FNL & 1,880' FEL

Bottom Hole Report for: Kathy Gentry  
Coordinates: Loggers: Blake Johnson & Craig Little  
Ground Elevation (ft): 2,161'      K.B. Elevation (ft): 2,181'  
Logged Interval (ft): 5,450'      To: 9,600'      Total Depth (ft): 9,600'  
Formation: Mississippi Limestone  
Type of Drilling Fluid: Native Gels

Printed by HORIZONTAL.LOG from WellSight Systems 1-800-447-1534 [www.WellSight.com](http://www.WellSight.com)

## OPERATOR

Company: SANDRIDGE ENERGY, INC  
Address: 123 Robert S. Kerr Avenue, Ste. 2430  
Oklahoma City, Oklahoma 73102-6406

# GEOLOGIST

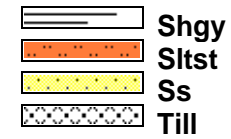
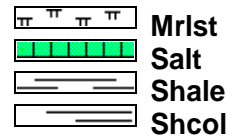
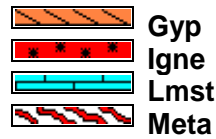
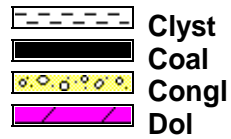
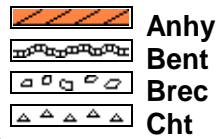
Name: KATHY GENTRY  
Company: SANDRIDGE ENERGY, INC  
Address: 123 Robert S. Kerr Avenue, Ste. 2430  
Oklahoma City, Oklahoma 73102-6406

## Cores

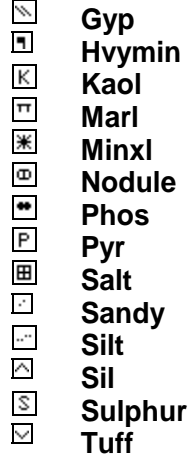
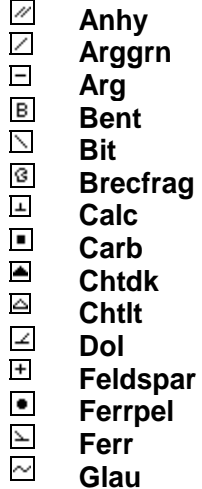
## DSTs

## Comments

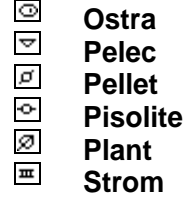
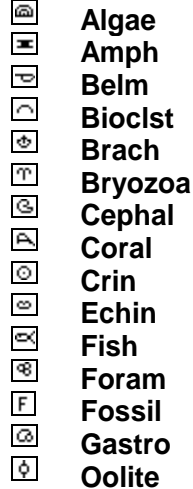
### ROCK TYPES



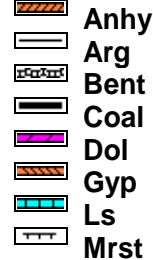
### MINERAL



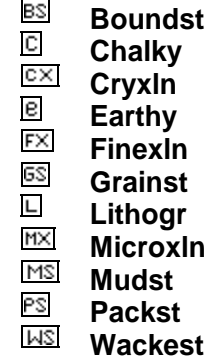
### FOSSIL



### STRINGER



### TEXTURE



**OTHER SYMBOLS**

**POROSITY**

- E Earthy
- Fenest
- F Fracture
- X Inter
- ⊗ Moldic
- Organic
- P Pinpoint

- V Vuggy

**SORTING**

- W Well
- M Moderate
- P Poor

**ROUNDING**

- R Rounded
- r Subrnd
- a Subang
- A Angular

**OIL SHOW**

- Even

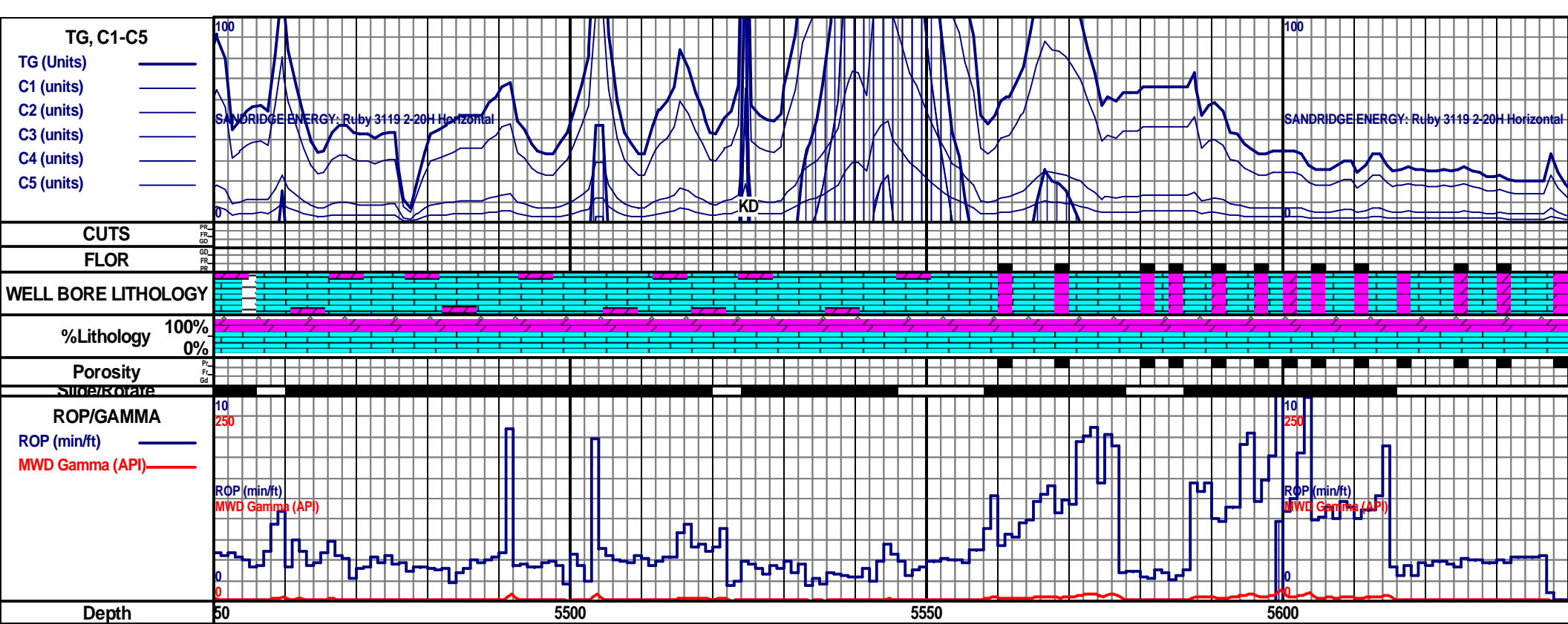
- ⊙ Spotted
- Ques
- D Dead

**INTERVAL**

- Core
- Dst

**EVENT**

- ▽ Rft
- ▴ Sidewall

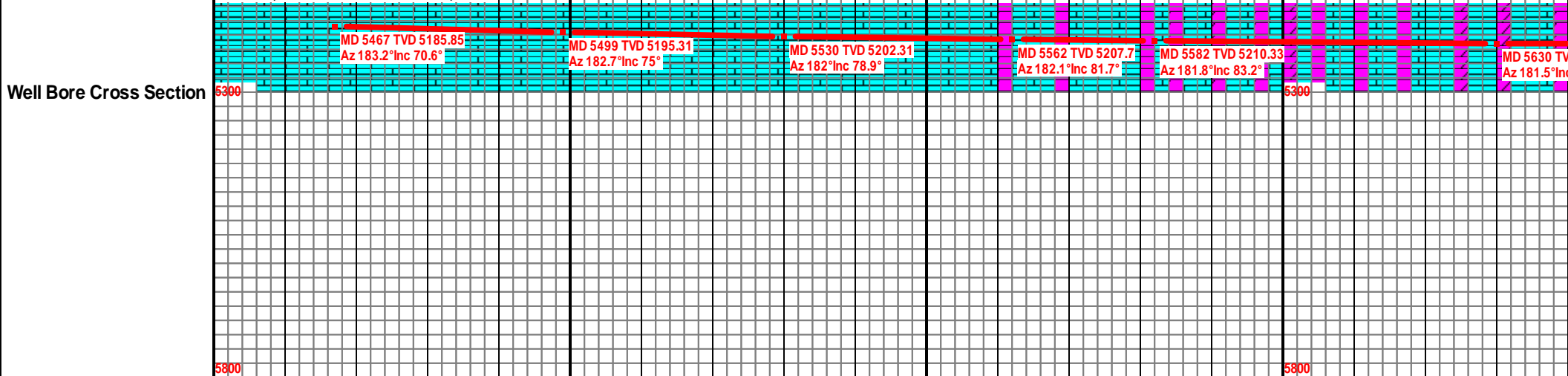


4800 TVD  
**SANDRIDGE ENERGY INC. RUBY 3119 2-20H SEC 20-T31S-R19W COMANCHE CO. KANSAS GL- 2,161' KB- 2,181'**

LS: PRED LT TAN-CRM, SME TN , OCC LT GY, MSTLY PLYT, PRED FRM, OCC MOD FRM-SLI FRM, PRED V/FN-FN XLN, TR HL FRAC POR, OCC PP POR, DOL: PRED OFF WHT, OCC TR LT TAN, BLKY, V/FN-MICRO FN XLN, CHT: PRED OFF WHT, SME OPQ, MSTLY HD-V/HD, OCC BRIT, PRED ANG, SME SUB ANG, TR MICRO MICA SCATT THRUOUT, TR HL FRAC, SME SCAT YEL-BRI YEL FLOR, NO CUT, NO RES RING. NO FREE OIL.

MUD DATA- @ 5,680'  
 WT-8.5 VIS-28 PV-1  
 YP-1 GEL 1/1  
 FIL-60.0 SOL- 2.0  
 H2O-98.0 PH-10.5  
 CL-27,000 CA-1200

4800 TVD  
**TOOH FOR INTERMEDIATE CASING @ 5,637' MD ON 08/27/2012 & NB # 5 SECURITY 6.125 FX64D SN 12055214**



100

SANDRIDGE ENERGY: Ruby 3119 2-20H Horizontal

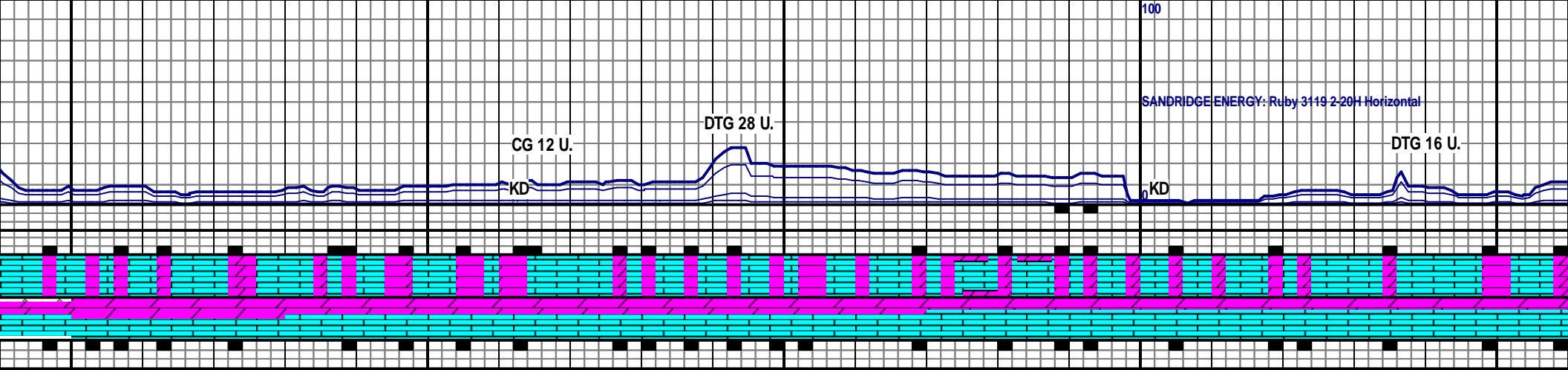
CG 12 U.

DTG 28 U.

DTG 16 U.

KD

KD

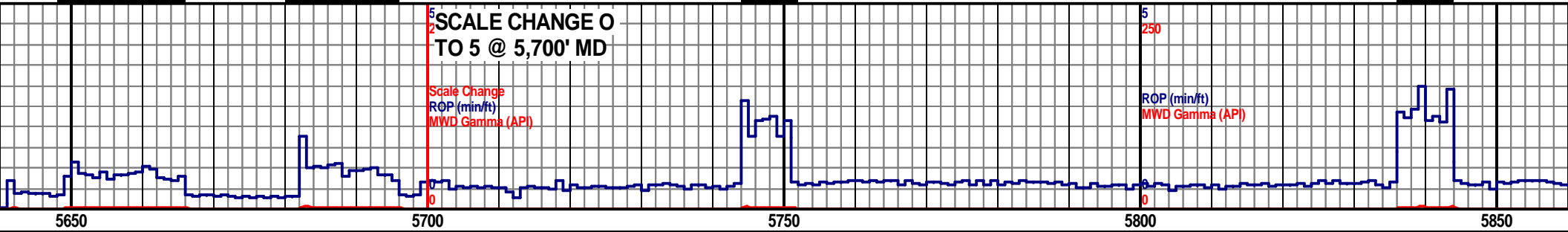


SCALE CHANGE 0 TO 5 @ 5,700' MD

Scale Change  
ROP (min/ft)  
MWD Gamma (API)

5  
250

ROP (min/ft)  
MWD Gamma (API)



5650

5700

5750

5800

5850

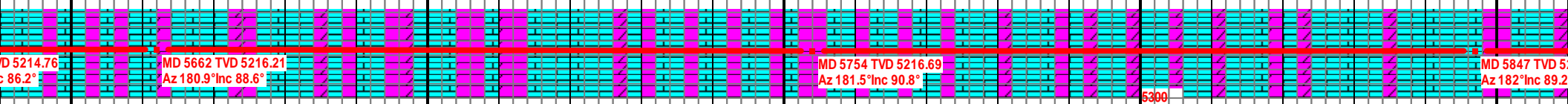
LS: MSTLY LT TAN- OFF WHT, OCC MED TAN, TR LT  
 GY, PRED PLTY- BLKY, TR SPLNTY, MSTLY FRM- MOD  
 FRM, OCC BRIT- CHLKY, PRED V FN- FN XLN, TR HL  
 FRAC POR, DOL: MSTLY OFF WHT- LT TAN, MSTLY  
 BLKY, PRED V FN- MICRO FN XLN, MOD FRM- FRM,  
 CHT: PRED OFF WHT- WHT, OCC OPQ, V HD- HD, OCC  
 V HD- BRIT, MSTLY SPLNTY, V ANG, TR HL FRAC POR,  
 TR V PR DULL YEL FLOR, NO VIS CUT, NO RESD RING

WOB: 14.9 K  
 SPM: 87  
 PP: 1922

LS: MSTLY LT TAN- OFF WHT, OCC WHT, TR MED TAN, MSTLY BLKY- PLTY, PRED  
 FRM- MOD FRM, TR BRIT, MSTLY MICRO FN- V FN XLN, LITHO, OCC HL FRAC POR,  
 DOL: PRED OFF WHT- LT TAN, SME WHT, TR OPQ, SLI INCRG LT TAN, MSTLY  
 BLKY, OCC PLTY, PRED MICRO FN- V FN XLN, DNSE, MOD FRM- FRM, SCAT DULL  
 YEL- BRI YEL FLOR, V FN LT YEL CUT, FNT MLKY LT YEL RESD RING

4800 TVD

LS: PRED LT TAN- MED TAN, SCAT OFF WHT- WHT  
 FRM, INCRG MOD FRM, SME FRM- BRIT, PRED M  
 HL FRAC POR, DOL: PRED LT TAN- OFF WHT, SM  
 SME PLTY, MICRO FN- V FN XLN, DNSE, MOD FR  
 SCAT YEL FLOR DCRG, NO VIS CUT NO RESD R



MD 5214.76  
Az 86.2°

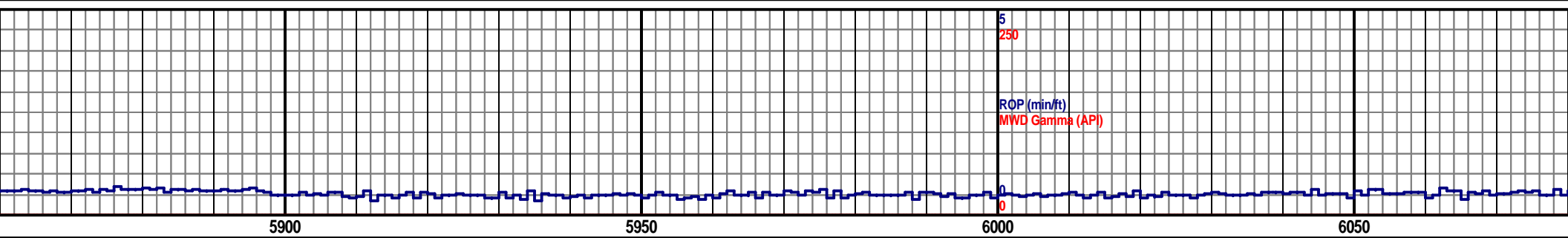
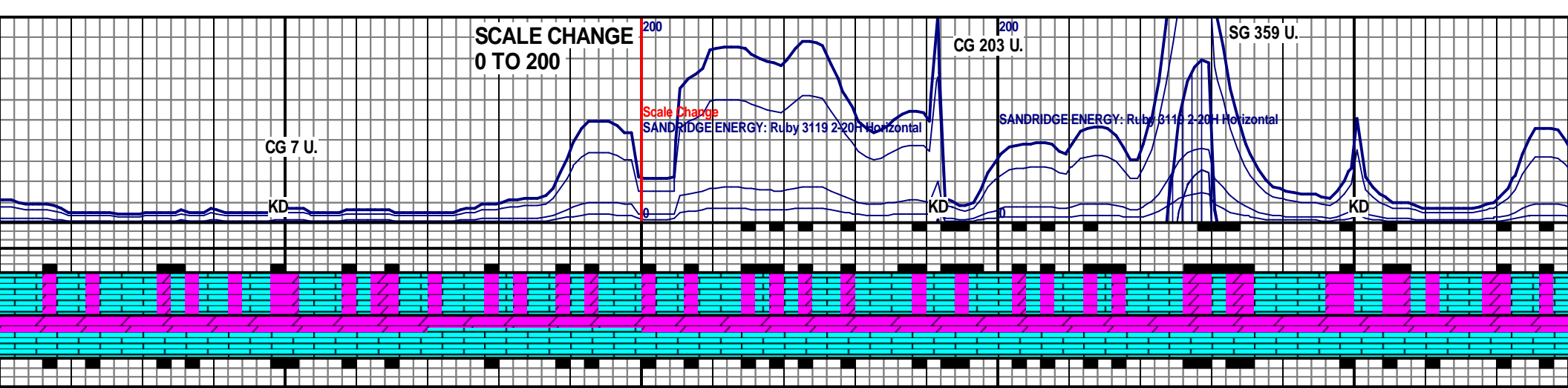
MD 5662 TVD 5216.21  
Az 180.9° Inc 88.6°

MD 5754 TVD 5216.69  
Az 181.5° Inc 90.8°

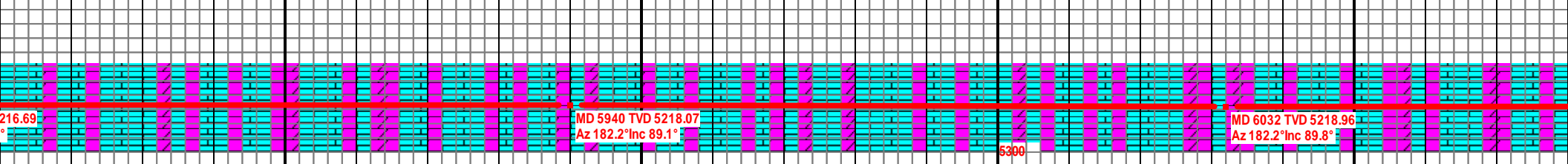
MD 5847 TVD 5216.69  
Az 182° Inc 89.2°

5300

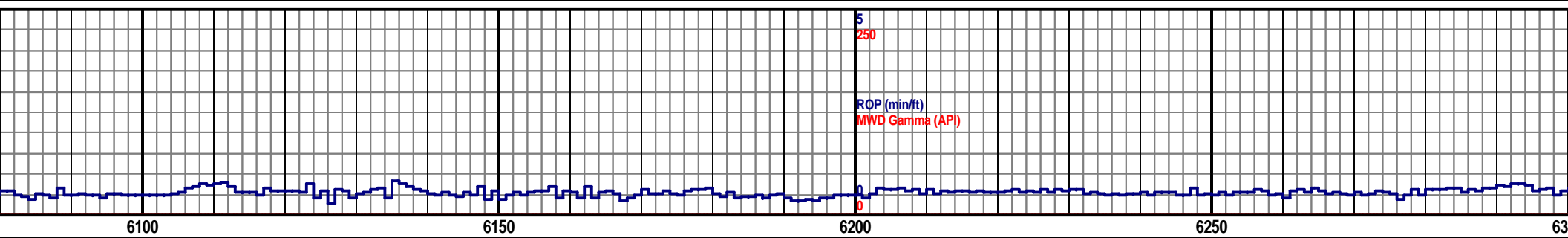
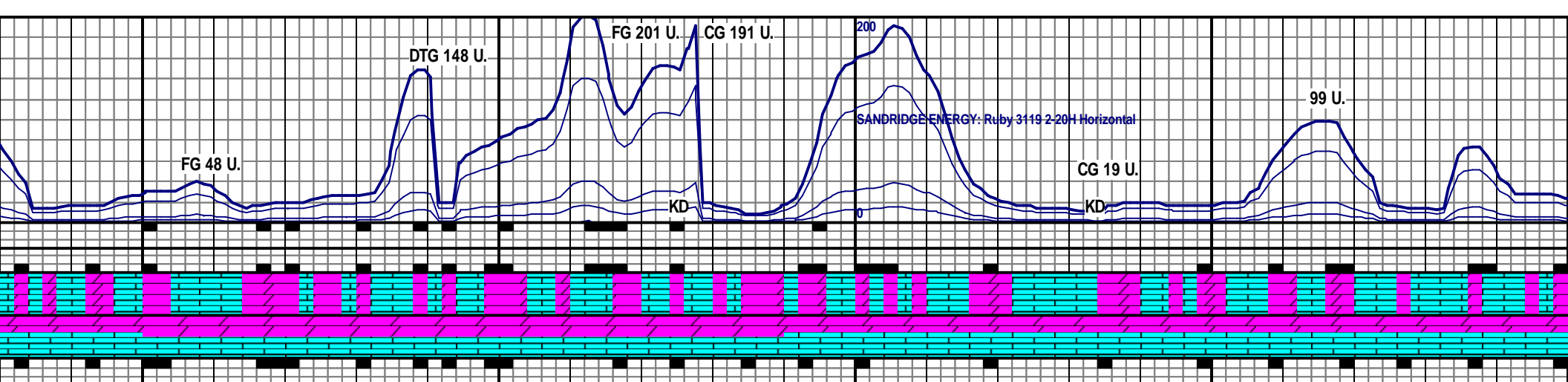
5800



<p>HT THRU OUT, MSTLY FRM- MOD          MICRO FN- V FN XLN, LITHO, TR          ME WHT, TR OPQ, PRED BLKY,          RM- FRM, OCC MOD SFT- BRIT,          ING</p>	<p>LS: MSTLY LT TAN- OFF WHT, SCAT WHT THRU OUT, SME MED TAN, PRED MOD          FRM- FRM, OCC FRM- BRIT, MSTLY MICRO FN- V FN XLN, LITHO, TR HL FRAC POR,          DOL: PRED OFF WHT- LT TAN, SME WHT, TR OPQ, PRED BLKY, SME PLTY DCRG,          MSTLY MICRO FN- V FN XLN, DNSE, PRED MOD FRM- FRM, SME FRM- BRIT, TR          GLAU, SCAT YEL FLOR SLI INCRG, V FNT BLMNG LT BLU TRANSLU CUT, FNT LT          BLU MLKY RESD RING</p>	<p>4800 TVD          WOB: 20.5 K          RPM: 61          SPM: 88          PP: 2192</p>	<p>LS: PRED OFF WHT- WHT, SCAT LT TAN THRU OUT, MSTLY MOD FRM-          BRIT, MSTLY MICRO FN- V FN XLN, LITHO, OCC HL FRAC POR, DOL: M          LT TAN, SCAT WHT, OCC OPQ, MSTLY BLKY, SME PLTY DCRG, PRED          XLN, DNSE, PRED MOD FRM- FRM, SME FRM- BRIT, TR GLAU, SCAT Y          DCRG, V FNT BLU/TRANSLU CUT, TR V LT BLU RESD RING</p>
---	---	--	--



<p>216.69          MD 5940 TVD 5218.07          Az 182.2° Inc 89.1°</p>	<p>5300</p>	<p>MD 6032 TVD 5218.96          Az 182.2° Inc 89.8°</p> <p>5800</p>
---	-------------	---

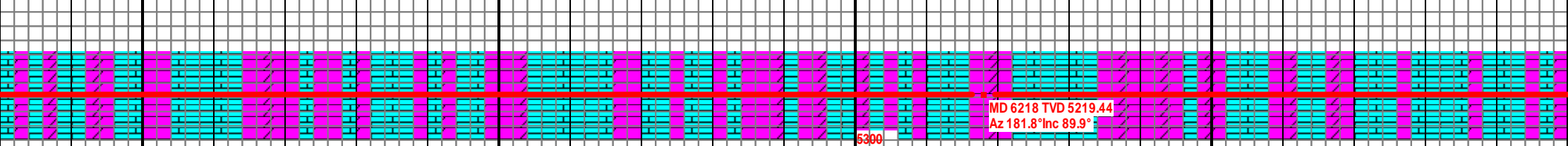


FRM, OCC FRM-  
MSTLY OFF WHT-  
MICRO FN- V FN  
EL FLOR SLI

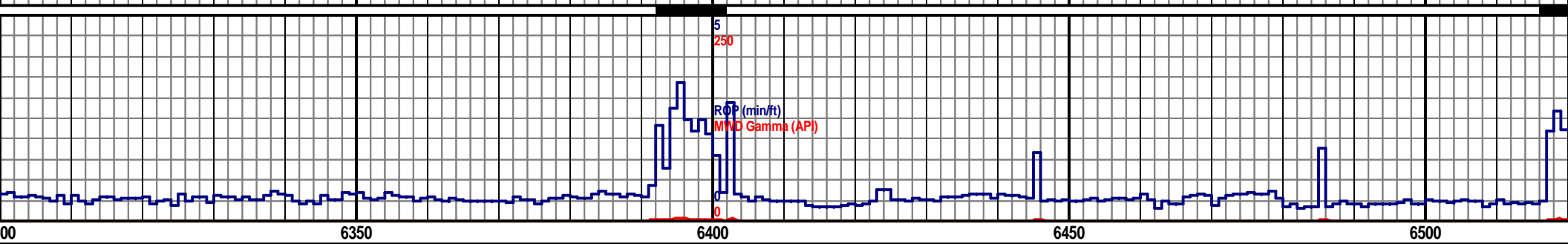
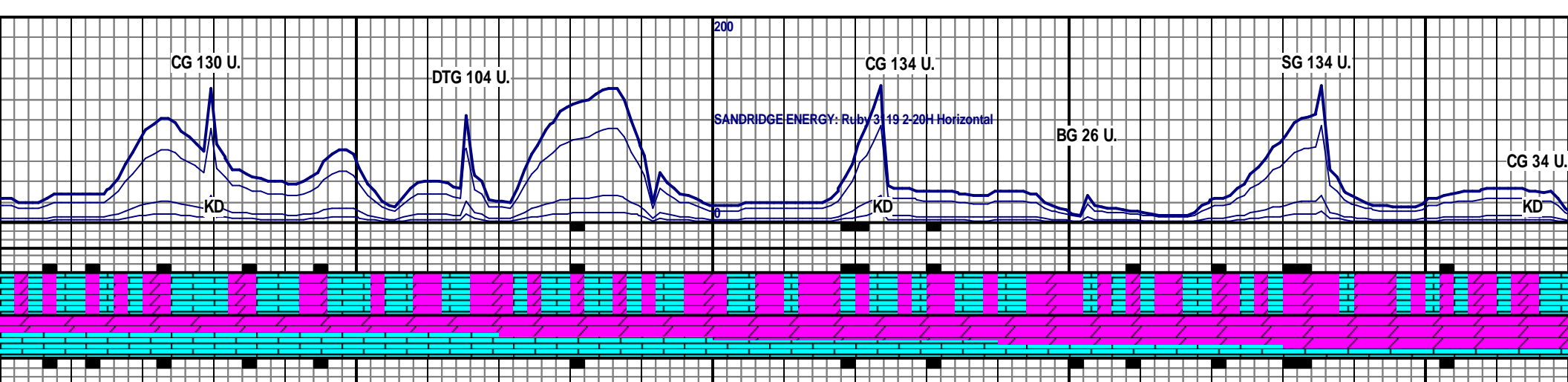
LS: MSTLY OFF WHT- WHT, SCAT LT TAN THRU OUT, MSTLY MOD FRM-  
FRM, OCC FRM- BRIT, MSTLY MICRO FN- V FN XLN, LITHO, OCC HL  
FRAC POR, DOL: MSTLY OFF WHT- LT TAN, SCAT WHT, OCC OPQ,  
MSTLY BLKY, SME PLTY DCRG, PRED MICRO FN- V FN XLN, DNSE,  
PRED MOD FRM- FRM, SME FRM- BRIT, TR GLAU, SCAT YEL FLOR,  
FNT LT BLU CUT, V FNT LT BLU RESD RING

LS: PRED OFF WHT- WHT, SCAT LT TAN THRU OUT, PRED BLKY, MSTLY  
MOD FRM- FRM, SME FRM- BRIT, PRED MICRO FN- V FN XLN, LITHO, SME HL  
FRAC POR, DOL: MSTLY OFF WHT- WHT, OCC LT TAN, SCAT WHT THRU  
OUT, TR OPQ, PRED BLKY, TR PLTY, MSTLY MICRO FN- V FN XLN, DNSE,  
PRED MOD FRM- MOD SFT, OCC FRM, PR DULL YEL FLOR, NO VIS CUT NO  
RESD RING

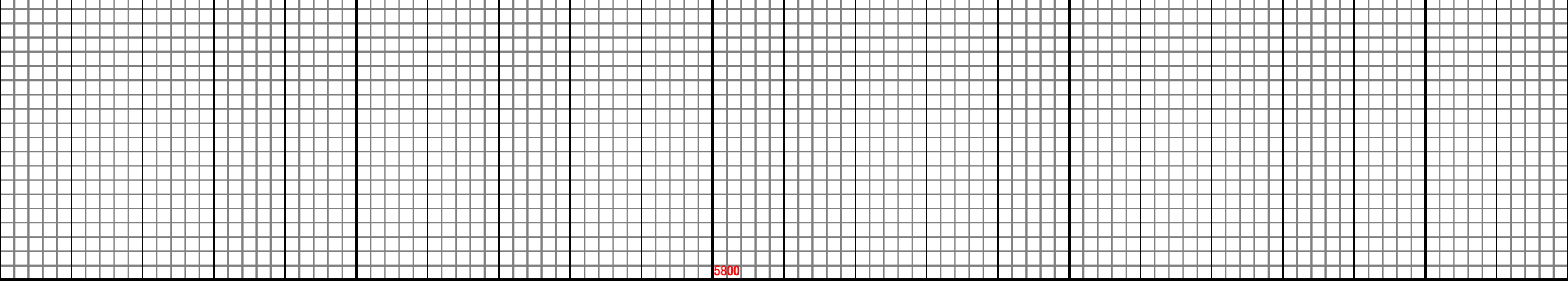
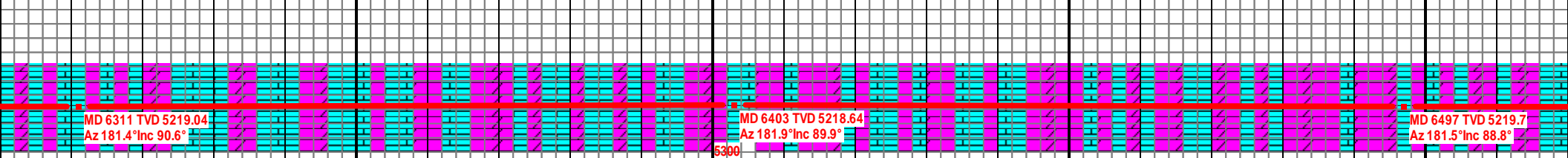
WOB:  
RPM:  
SPM:  
PP: 20

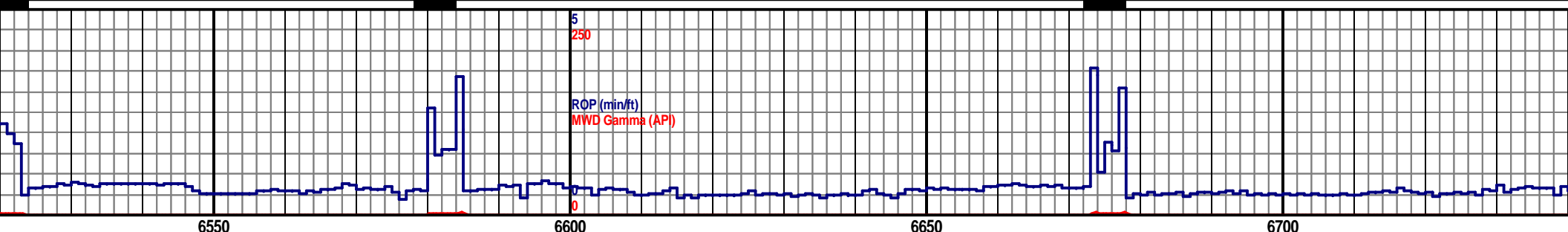
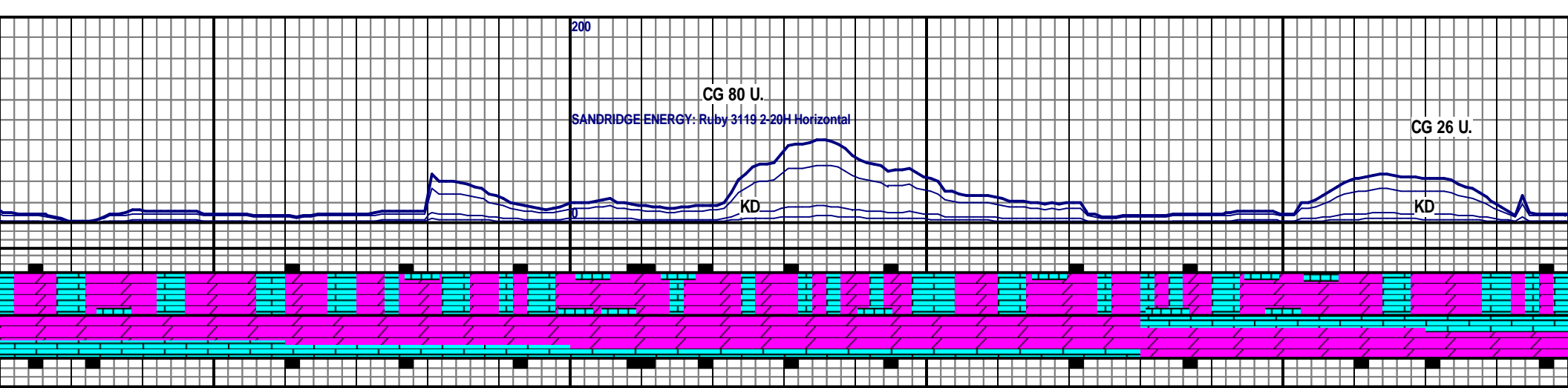


MD 6218 TVD 5219.44  
Az 181.8° Inc 89.9°



<p>17.9 K 61 86 22</p> <p>LS: MSTLY OFF WHT- WHT, SCAT LT TAN, PRED BLKY, MSTLY MOD FRM, SME FRM- BRIT, PRED MICRO FN- V FN XLN, SME LITHO, OCC HL FRAC POR, DOL: PRED WHT- OFF WHT, SME LT TAN, INCRG TR OPQ, MSTLY BLKY, TR PLTY, PRED MICRO FN- V FN XLN, DNSE, PRED MOD FRM- MOD SFT, OCC FRM, PR DULL YEL FLOR, NO VIS CUT, NO RESD RING</p>	<p>4800 TVD</p> <p>DOL: OFF WT, SME WHT, OCC LT TAN, TR OPQ, PRED BLKY, MSTLY MOD FRM, OCC FRM=BRIT, PRED FN XLN, SME V FN XLN, PRED BLKY, TR PLTY, LS: OFF WT-WHT, TR LT TAN, PRED BLKY, PRED FRM, TR MOD FRM-BRIT, PRED MICRO FN- V FN XLN, SME LITHO, OCC HL FRAC POR, DULL YEL FLOR THRUOUT, SCAT BRGHT GLD FLOR, DULL GRN CUT, FNT WHT RESD RING, TR GLAU</p>	<p>DOL: PRED TXT, FN TO OFF WHT, S RND TO SU FLOR THRU TR GLAU</p>
---	--	--



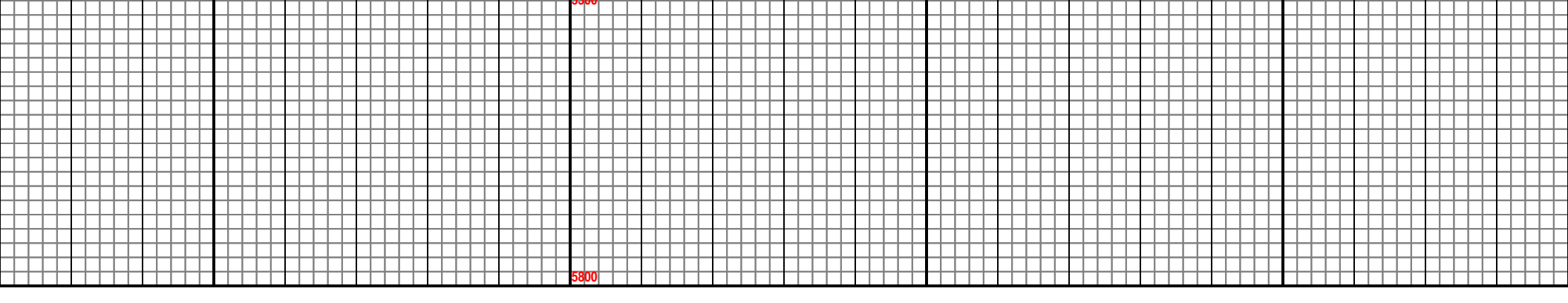
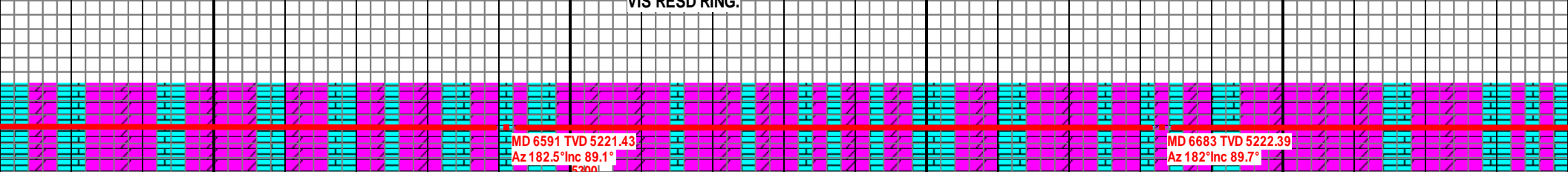


4800 TVD

WHT, OCC OFF WHT TO DULL WHT, SME V LT TAN, MSTLY BLKY, SME SUC V FN XLN, SUB ANG TO ANG, MOD FRM, SME BRIT, LS: MSTLY DULL WHT TO SME CRM, PRED BLKY, SME PLTY, FN TO V FN XLN, SME MICRO XLN, SUB B ANG, MOD SFT TO MOD FRM, SME CHLKY, TR HL FRAC POR, V PR GLD THRUOUT, SME SCAT BRGHT GLD FLOR, DULL TO FNT GRN CUT, NO RESD RING, WOB:16.0f RPM: 62 SPM:87 PP: 2337

DOL: PRED WHT, OCC OFF WHT, SME LT CRM, MSTLY BLKY, OCC CHNKY, SME SUC TXT, FN TO V FN XLN, SUB RND TO SUB ANG, MOD SFT TO MOD FRM, SME CHLKY, LS: MSTLY DULL WHT TO OFF WHT, PRED BLKY, FN TO V FN XLN, SME MICRO XLN, SUB RND TO SUB ANG, MOD SFT TO MOD FRM, SME CHLKY, GLD FLOR THRUOUT, NO VIS CUT, NO VIS RESD RING.

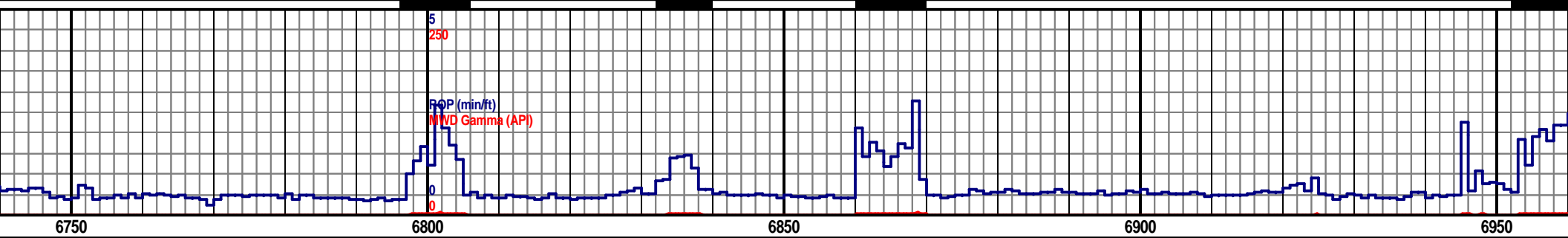
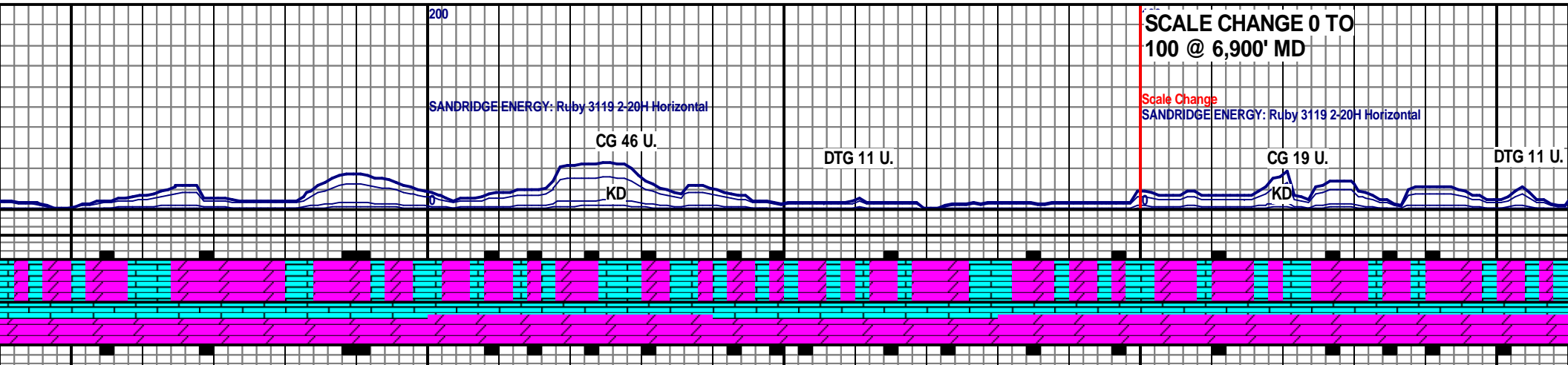
DOL: MSTLY WHT-OFF WH XLN, DNSE, MOD SFT- MOD BLKY, MICRO FN- V FN XLN, YEL FLOR, NO VIS CUT, NO



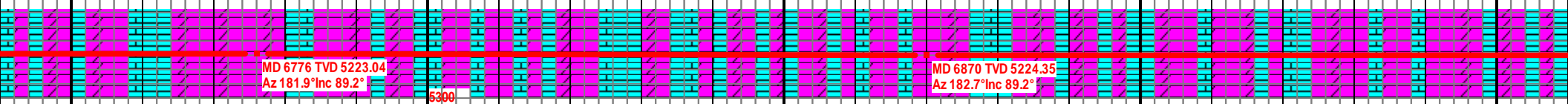
SCALE CHANGE 0 TO  
100 @ 6,900' MD

SANDRIDGE ENERGY: Ruby 3119 2-20H Horizontal

Scale Change  
SANDRIDGE ENERGY: Ruby 3119 2-20H Horizontal



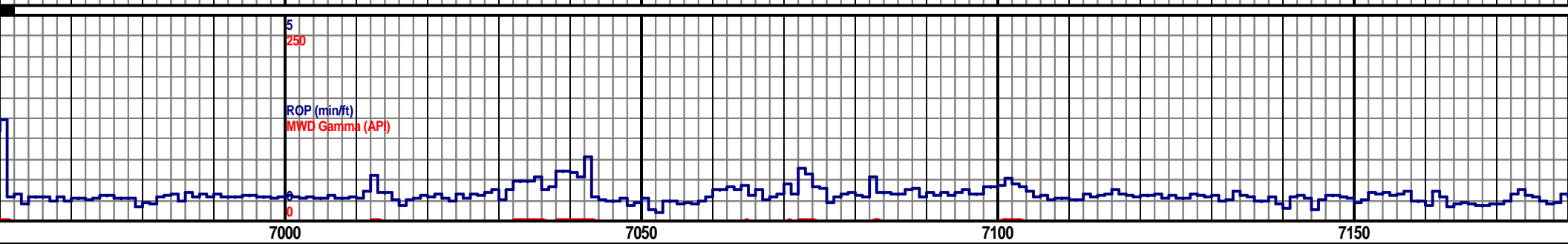
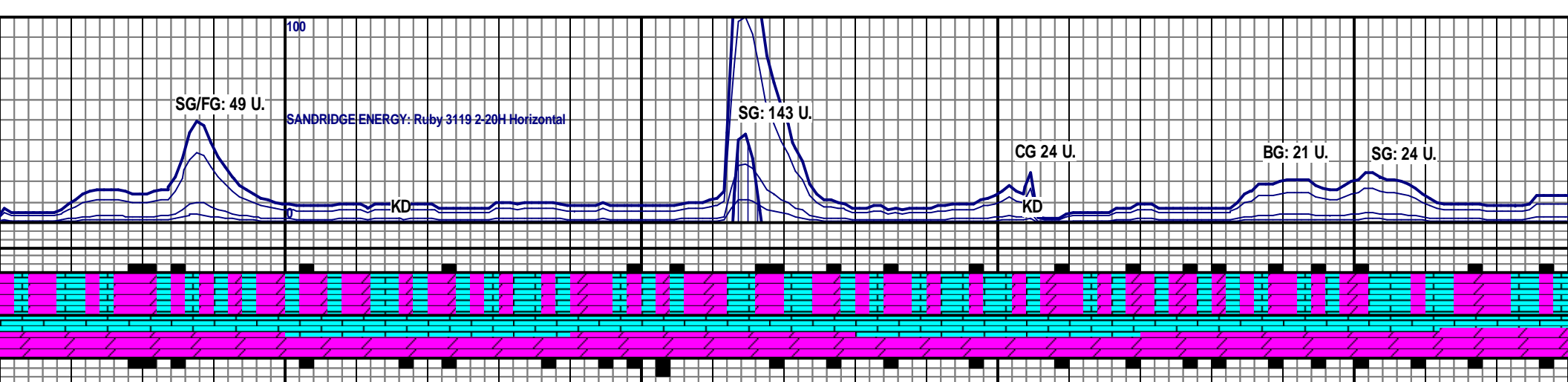
<p>T, TR LT TAN, PRED BLKY, MSTLY MICRO FN D FRM, OCC BRIT, LS: PRED OFF WHT- WHT, I, OCC FN XLN, MOD FRM- MOD SFT, SCAT DULL D RESD RING</p>	<p>4800 TVD DOL: MSTLY WHT- OFF WHT, TR LT TAN, PRED BLKY, MSTLY MICRO FN XLN, DNSE, MOD SFT- MOD FRM, OCC BRIT, LS: PRED OFF WHT- WHT, BLKY, MICRO FN- V FN XLN, OCC FN XLN, MOD FRM- MOD SFT, SCAT DULL YEL FLOR, NO VIS CUT, NO RESD RING</p>	<p>WOB: 9.5K RPM: 61 SPM: 86 PP: 2112</p>	<p>DOL: PRED OFF WHT- LT TAN, SCAT WHT T MICRO FN XLN, DNSE, MOD SFT- MOD FRM, POR, LS: PRED OFF WHT- WHT, TR LT TAN, FN- V FN XLN, OCC FN XLN, LITHO, MOD FR DULL YEL FLOR, NO VIS CUT, NO RESD RIN</p>
---	--	---	--



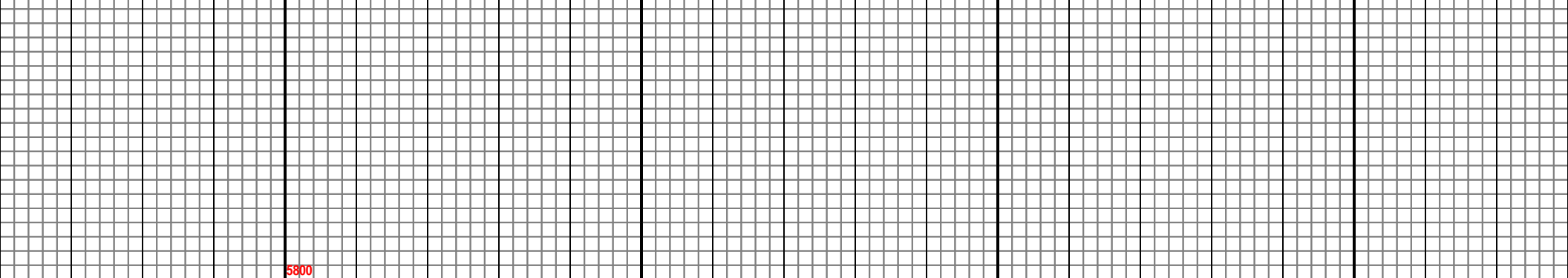
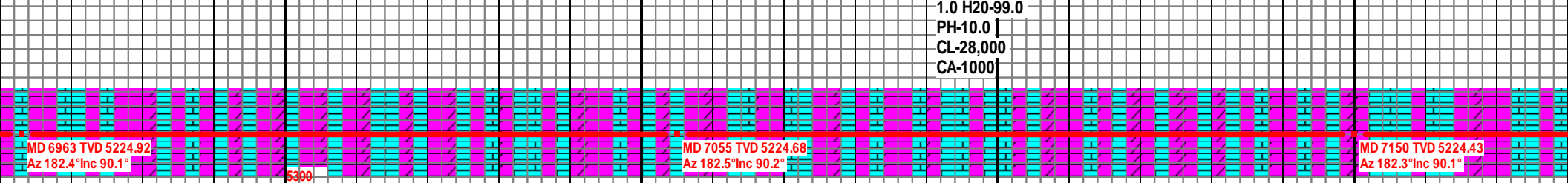
MD 6776 TVD 5223.04  
Az 181.9° Inc 89.2°

MD 6870 TVD 5224.35  
Az 182.7° Inc 89.2°

5800



<p>THRU OUT, MSTLY BLKY, PRED SCAT BRIT/SFT, TR HL FRAC MSTLY BLKY, PRED MICRO M- MOD SFT, TR CHLKY, TR G</p>	<p>DOL: MSTLY OFF WHT- LT TAN, SCAT WHT THRU OUT DCRG, PRED BLKY, TR PLTY, MSTLY MICRO FN XLN- V FN XLN, DNSE, PRED MOD SFT- MOD FRM, OCC BRIT/SFT, TR HL FRAC POR, LS: PRED OFF WHT- WHT, TR LT TAN, MSTLY BLKY, PRED MICRO FN- V FN XLN, LITHO, MOD FRM- MOD SFT, SME CHLKY, TR GLAU, OCC DULL YEL- BRI YEL FLOR, NO VIS CUT, NO RESD RING</p>	<p>MUD DATA- @ 7,104' WT-8.5 VIS-28 PV-1 YP-1 GEL 1/1 FIL-60.0 SOL- 1.0 H2O-99.0 PH-10.0   CL-28,000 CA-1000 </p>	<p>DOL: PRED LT TAN- OFF WHT, OCC WHT DCRG, MSTLY BLKY, INCRG TR MICRO FN XLN- V FN XLN, MSTLY DNSE, PRED MOD SFT- MOD FRM, OC BRIT/SFT, TR HL FRAC POR, LS: PRED OFF WHT- WHT, OCC LT TAN, PR MSTLY MICRO FN- V FN XLN, LITHO, MOD FRM- MOD SFT, SME CHLKY, T TR BRI YEL FLOR, NO VIS CUT, NO RESD RING</p>
---	--	---	--



100

SANDRIDGE ENERGY: Ruby 3119 2-20H Horizontal

CG 19 U.

KD

CG 7 U.

KD

SG: 14 U.

CG 7 U.

KD

5

250

ROP (min/ft)

MWD Gamma (API)

0

7200

7250

7300

7350

7400

PLTY, WOB:16.0K  
 RED BLKY, RPM: 62  
 TR GLAU, SPM:87  
 PP: 2337

DOL: MSTLY OFF WHT- LT TAN, OCC WHT INCRG, BLKY, SME PLTY, PRED MICRO FN XLN- V FN XLN, DNSE, MSTLY MOD FRM- MOD SFT, OCC BRIT/SFT, TR HL FRAC POR, LS: PRED OFF WHT- WHT, OCC LT TAN, PRED BLKY, MSTLY V FN- MICRO FN XLN, LITHO, MOD FRM- FRM, SME CHLKY- MOD SFT, TR GLAU, OCC YEL FLOR, NO VIS CUT, NO RESD RING

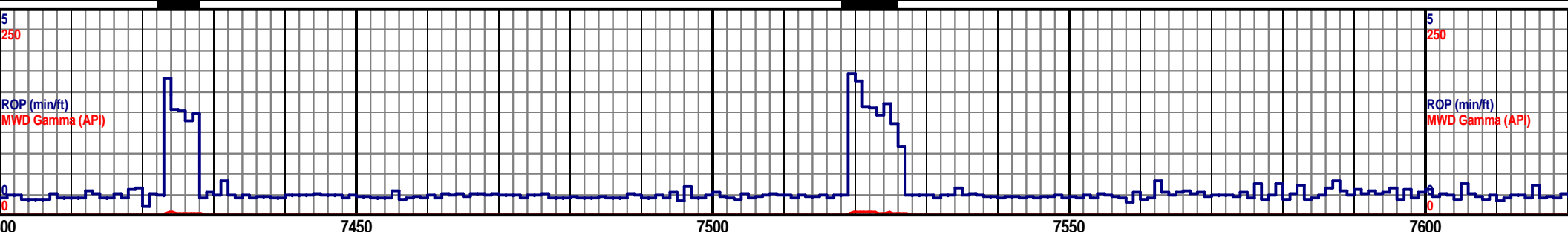
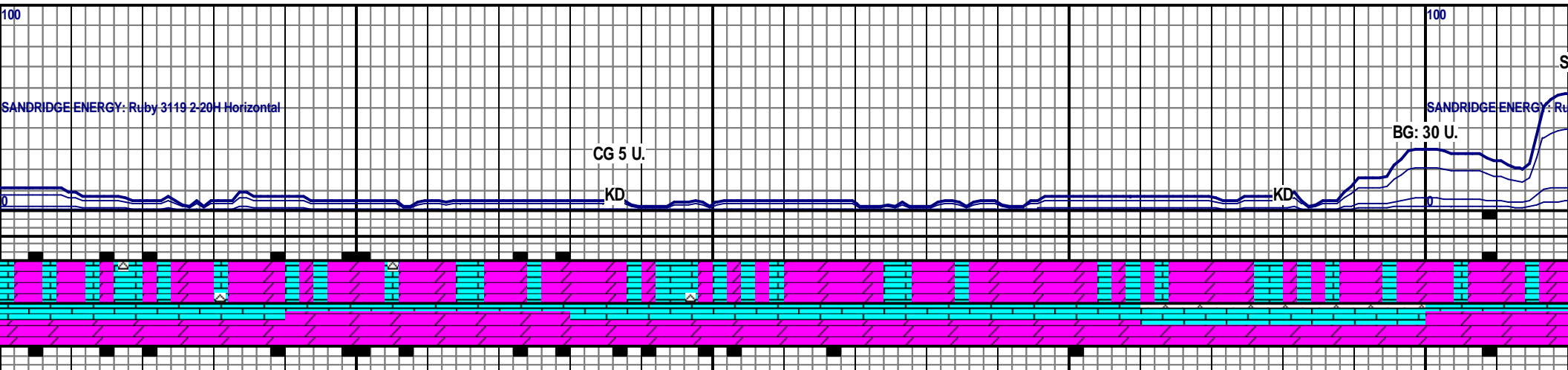
DOL: PRED LT TAN- OFF WHT, SCAT WHT, TR OPQ, MSTLY BLKY- PLTY, PRED MICRO FN XLN- V FN XLN, DNSE, MSTLY MOD FRM- MOD SFT, OCC BRIT/SFT, OCC HL FRAC POR, LS: PRED OFF WHT- WHT, OCC LT TAN, INCRG WHT, MSTLY BLKY, PRED V FN- MICRO FN XLN, LITHO, MOD FRM- FRM, OCC CHLKY- MOD SFT, TR GLAU, V PR YEL FLOR, NO VIS CUT, NO RESD RING

MD 7245 TVD 5224.26  
 Az 182.3° Inc 90.1°

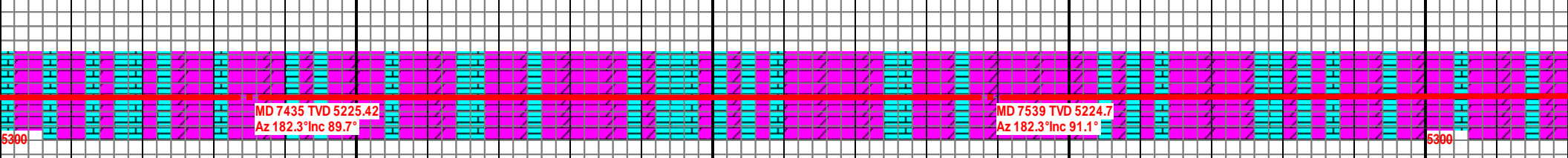
MD 7340 TVD 5224.68  
 Az 182.3° Inc 89.4°

5300

5800

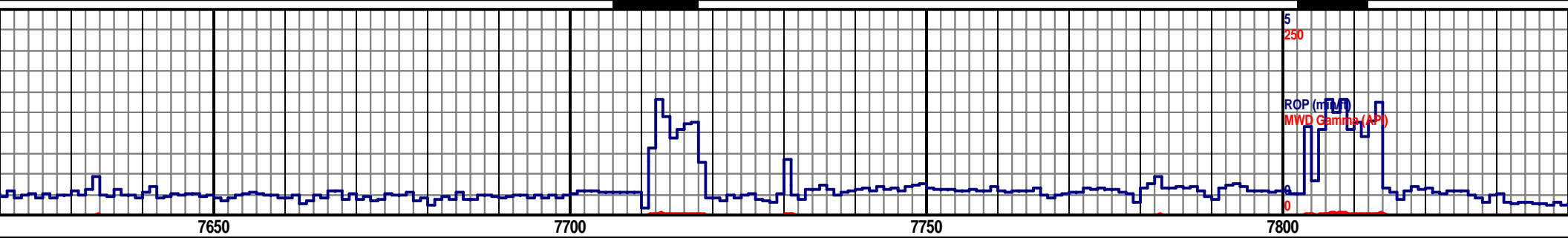
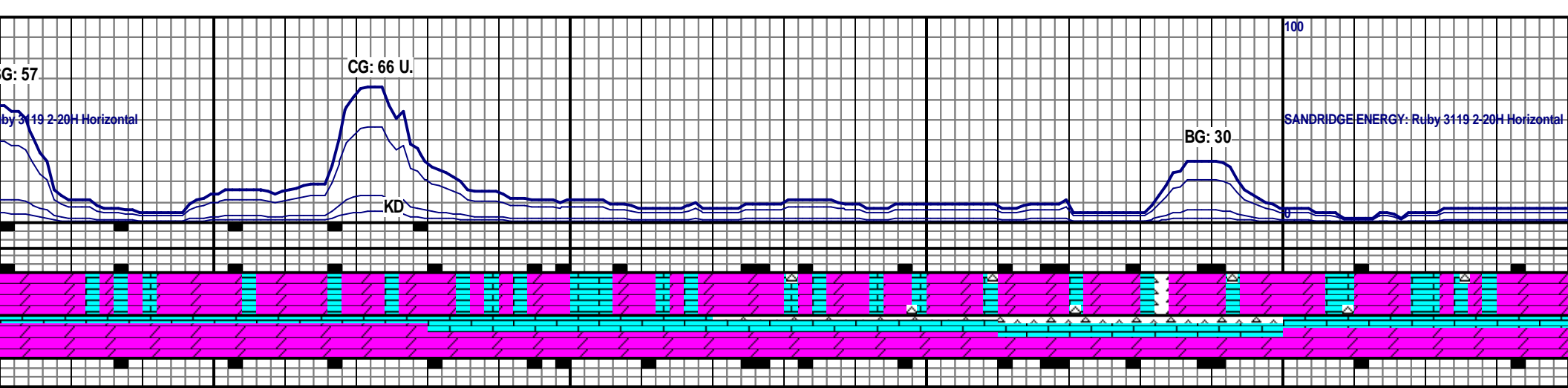


<p>4800 TVD</p> <p>DOL: MSTLY LT TAN- OFF WHT, SME WHT, OCC MTTLD OPQ- LT TAN, PRED MICRO FN- V FN XLN, MSTLY MOD SFT- MOD FRM, OCC FRM, OCC HL FRAC POR, LS: OFF WHT- WHT, OCC LT TAN, MSTLY BLKY, PRED MICRO FN- V FN XLN, LITHO, MOD FRM- FRM, TR CHLKY, TR CHT: OFF WHT- OPQ, OCC WHT, V HD- HD, TR BRIT, MSTLY SPLNTY- PLTY, V ANG, TR YEL- BRI YEL FLOR, NO VIS CUT, NO RESD RING</p>	<p>WOB: 27.4 K RPM: 62 SPM: 87 PP: 2555</p>	<p>DOL: MSTLY LT TAN-OFF WHT, OCC CRM TO DULL WHT, MSTLY BLKY, SME SUB RND TO SUB ANG, PRED MICRO FN TO V FN XLN, MOD FRM TO FRM, SME BRIT, SME HL FRAC POR, LS: MSTLY OFF WHT TO DULL WHT, SME LT TAN, MSTLY BLKY, SME CHNKY, OCC SUB ANG TO SUB RND, MOD SFT TO MOD FRM, SME FRM, TR BRIT, CH: PRED OFF WHT-CRM OPQ, OCC LT GRY, MSTLY BLKY, ANG-SUB ANG, V FN XLN, SME PLATY, FRM, BRIT, TR HL FRAC POR, SCAT BRIGHT GLD FLOR, NO VIS CUT, NO RESD RING</p>	<p>4800 TVD</p> <p>DOL: MSTLY LT TAN-OFF WHT, SME WHT, OCC MTTLD OPQ- LT TAN, PRED MICRO FN- V FN XLN, MSTLY MOD SFT- MOD FRM, OCC FRM, OCC HL FRAC POR, LS: OFF WHT- WHT, OCC LT TAN, MSTLY BLKY, PRED MICRO FN- V FN XLN, LITHO, MOD FRM- FRM, TR CHLKY, TR CHT: OFF WHT- OPQ, OCC WHT, V HD- HD, TR BRIT, MSTLY SPLNTY- PLTY, V ANG, TR YEL- BRI YEL FLOR, NO VIS CUT, NO RESD RING</p>
---	---	--	--



MD 7435 TVD 5225.42  
Az 182.3° Inc 89.7°

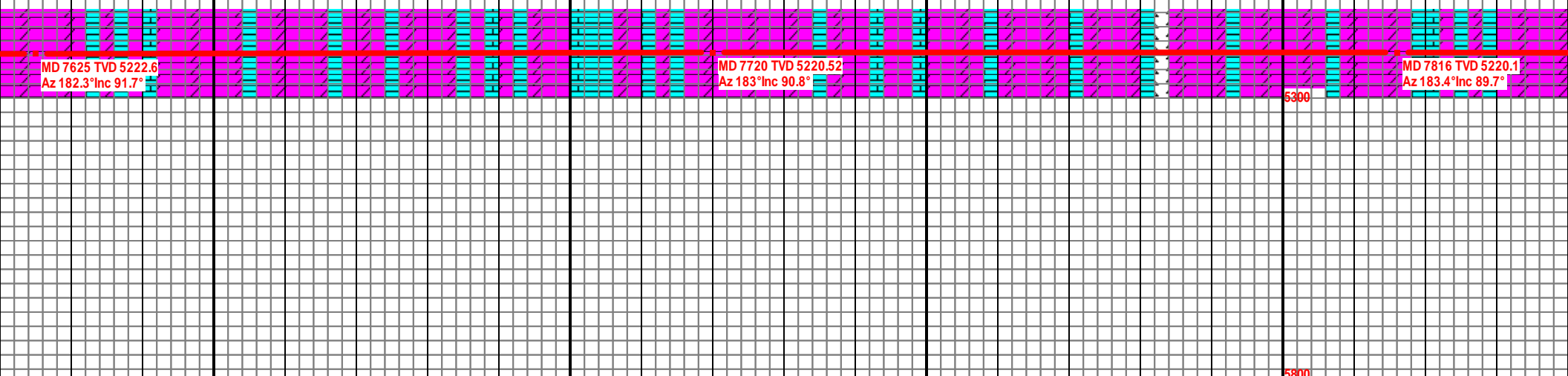
MD 7539 TVD 5224.7  
Az 182.3° Inc 91.1°



: MSTLY OFF WHT-WHT, OCC V LT TAN, MSTLY BLKY, TR PLTY, PRED  
 - MOD FRM, PRED MICRO FN XLN, SME BRIT, LS: PRED OFF WHT-CRM,  
 LY BLKY, OCC CHKY, SUB ANG-SUB RND, TR ANG, MOD FRM- MOD SFT,  
 BRIT, PRED DULL YEL FLOR W/ TR BRGHT GLD FLOR, FNT MLKY  
 /BLU BLMNG RESD RNG, DUL MLKY GRN/BLU VIS CUT

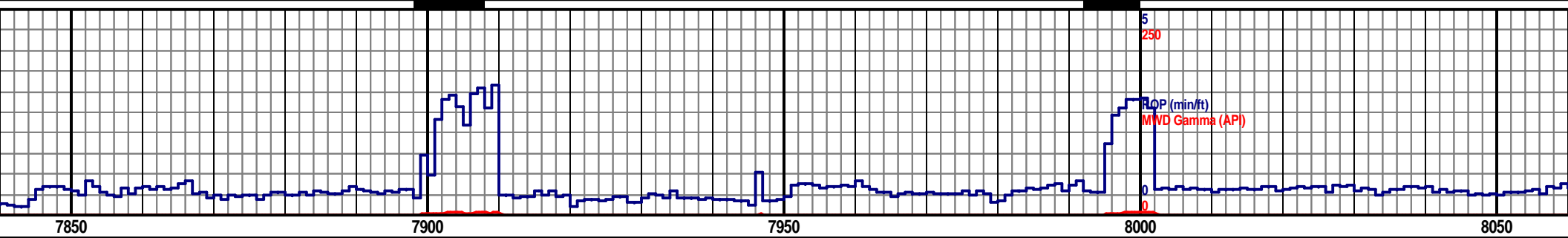
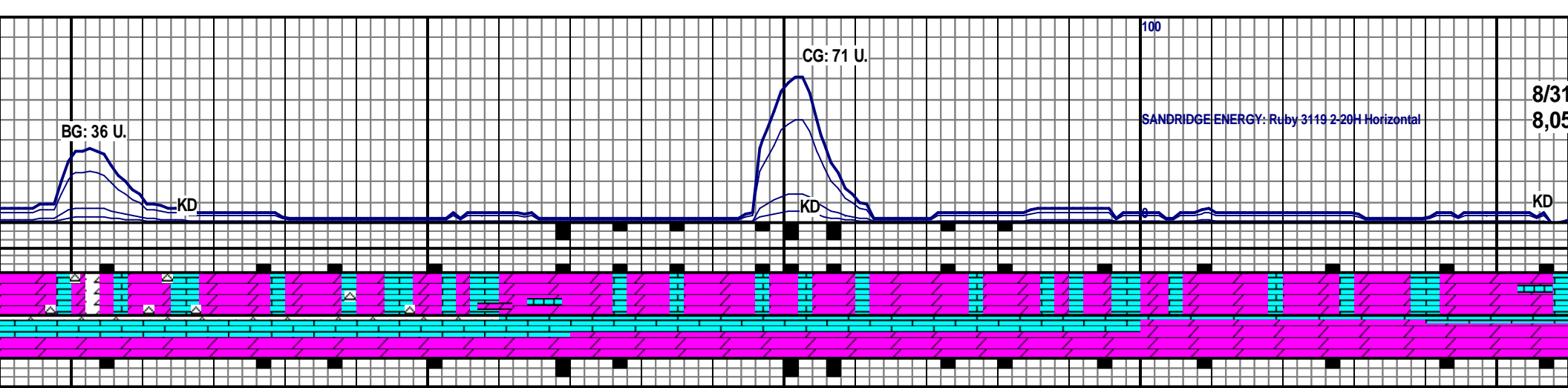
DOL: MSTLY OFF WHT-WHT, OCC V LT TAN, MSTLY BLKY, TR CHKY TR PLTY, ANG-SUB  
 RND, PRED FRM- MOD FRM, PRED MICRO FN XLN, SME BRIT, LS: PRED OFF WHT-CRM,  
 MSTLY BLKY, ANG-SUB RND, TR ANG, PRED MICRO FN XLN, MOD FRM- MOD SFT, TR  
 BRIT, CH: PRED OFF WHT-CRM OPQ, OCC LT GRY, MSTLY BLKY, SME PLTY, TR SPNTY,  
 ANG-SUB ANG, V FN XLN, SME PLATY, FRM, BRIT, TR HL FRAC POR, PRED DULL YELL  
 W/ TR BRGHT GLD FLOR, NO RESD RNG, NO VIS CUT

DOL: MSTLY OFF WHT-WHT  
 ANG-SUB RND, PRED FRM-  
 OFF WHT-CRM, MSTLY BLKY  
 FRM- MOD SFT, TR BRIT, CH  
 BLKY, SME PLTY, TR SPNTY  
 HL FRAC POR, PRED DULL  
 CUT



4800 TVD  
 WOB: 24 K  
 RPM: 64  
 SPM: 84  
 PP: 2170

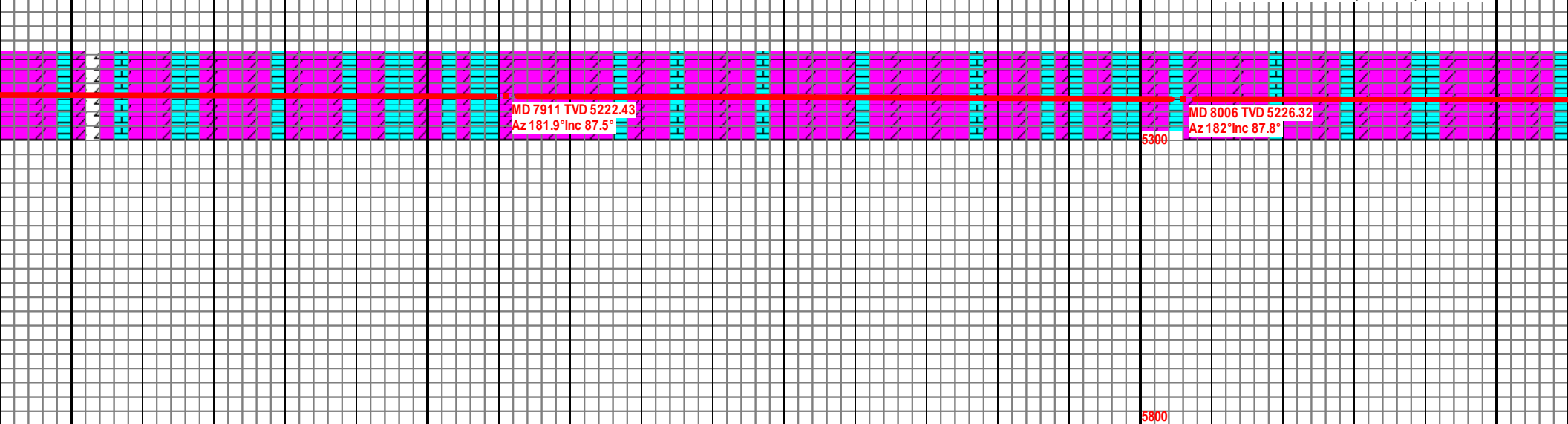
5800



... OCC V LT TAN, MSTLY BLKY, TR CHKY TR PLTY,  
 MOD FRM, PRED MICRO FN XLN, SME BRIT, LS: PRED  
 Y, ANG-SUB RND, TR ANG, PRED MICRO FN XLN, MOD  
 T: PRED OFF WHT-CRM OPQ, OCC LT GRY, MSTLY  
 Y, ANG-SUB ANG, V FN XLN, SME PLTY, FRM, BRIT, TR  
 YELL W/ TR BRGHT GLD FLOR, NO RESD RNG, NO VIS

DOL: MSTLY OFF WHT TO CRM, OCC DULL WHT TO LT TAN, MSTLY BLKY, SME SUB RND TO  
 SUB ANG, TR CHNKY, TR PLTY, SME SUC TXT W/ HYDROCARB STN, PRED MICRO FN XLN, SME  
 V FN XLN, OCC VUG POR, MOD FRM, SME BRIT, LS: PRED OFF WHT TO DULL WHT, OCC LT TAN  
 TO CRM, MSTLY BLKY, PRED SUB ANG, SME ANG, MSTLY MICRO FN XLN, OCC FN TO V FN XLN,  
 SME HL FRAC POR, MOD SFT TO MOD FRM, TR BRIT, SCAT BRGHT GLD FLOR, MLKY GRN/BLU  
 FLSH CUT, BRGHT GRN FLSH RESD RING, TR CHT, TR GLAU

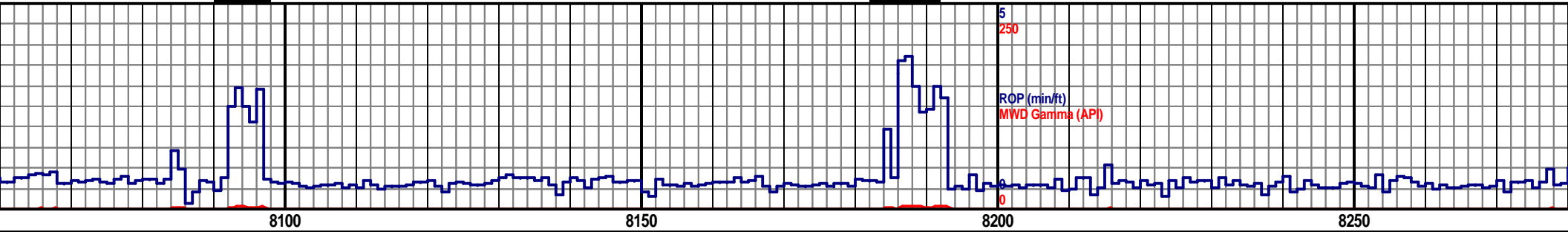
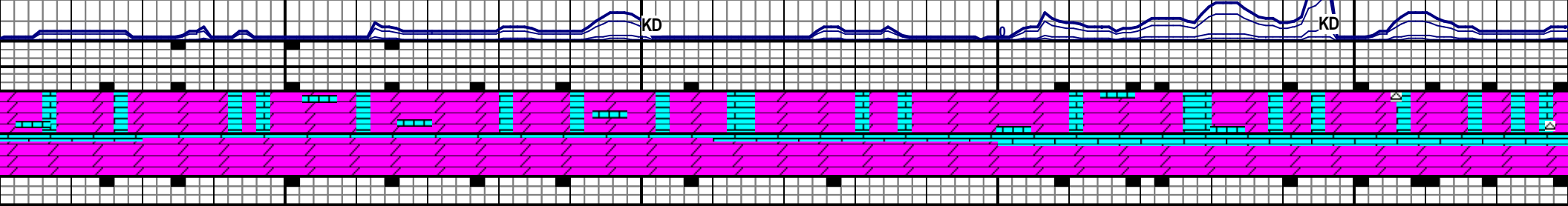
4800 TVD  
 DOL: PRED WHT TO OFF WHT, OCC LT TAN TO CR  
 BLKY, SME SUB RND TO SUB ANG, SME PLTY, M  
 HYDROCARB STN, PRED V FN TO MICRO FN XLN,  
 CRM TO LT TAN, OCC WHT TO OFF WHT, PRED BL  
 ANG, TR HL FRAC POR, FN TO V FN XLN, SME MIC  
 FRM, OCC CHLKY, MSTLY DULL GLD FLOR W/ SC  
 NO VIS RES RINGS, TR CHT, TR GLAU



1/2012 @  
54' MD  
TOP DRIVE  
DOWN;  
REPAIR @  
8,056' MD

SANDRIDGE ENERGY: Ruby 3119 2-20H Horizontal

CG 30 U.



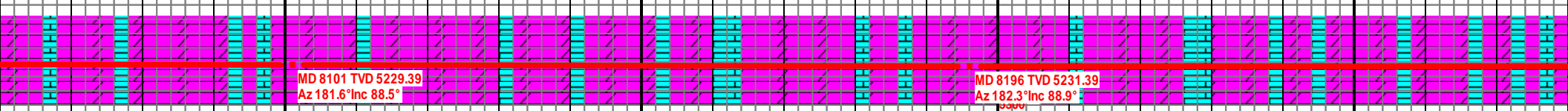
M, SME DULL WHT, MSTLY  
MOD FRM, SME BRIT, TR  
OCC VUG POR, LS: MSTLY  
KY, SME SUB RND TO SUB  
CRO XLN, MOD SFT TO MOD  
AT BRGHT YEL GRNS, NO CUT,

WOB: 2.6 K  
RPM: 62  
SPM: 86  
PP: 2368

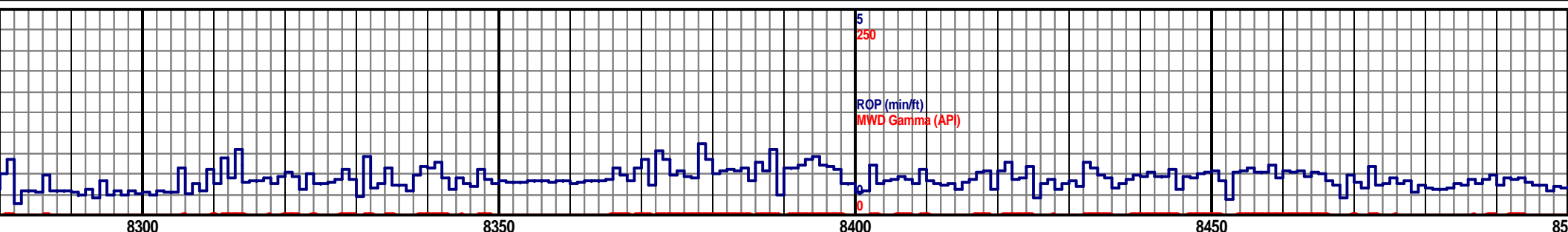
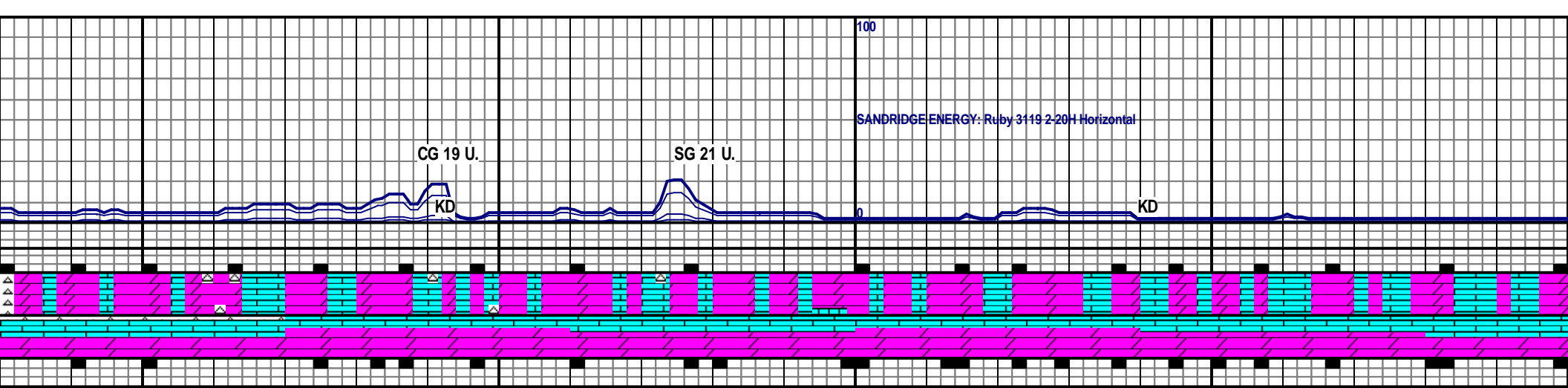
DOL: MSTLY WHT- OFF WHT, SME LT TAN, PRED BLKY, OCC PLTY, MOD FRM-  
MOD SFT, OCC BRIT, DNSE, MSTLY MICRO FN- V FN XLN, TR HL FRAC POR, LS:  
MSTLY OFF WHT- LT TAN, SCAT WHT, MSTLY BLKY, V FN- MICRO FN XLN, FRM-  
MOD FRM, SME CHLKY, SCAT DULL YEL/GLD FLOR, NO VIS CUT, NO RESD  
RING

4800 TVD

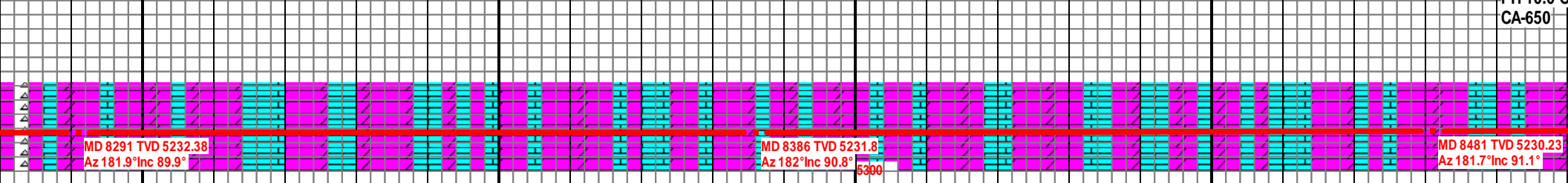
DOL: PRED OFF WHT- WHT, OCC LT TAN, MSTLY BLKY, PRED MOD FRM-  
SME BRIT, MSTLY MICRO FN- V FN XLN, TR SUCRO, SME HL FRAC POR,  
WHT- WHT, DCRG LT TAN, MSTLY BLKY, PRED FRM- MOD FRM, SME C  
TR PP VUG POR, CHT: PRED WHT, SCAT OFF WHT/OPQ, V HD- HD, S  
PRED SPLNTY- ANG, TR PP VUG POR, SCAT YEL- BRI YEL FLOR, NO  
RESD RING



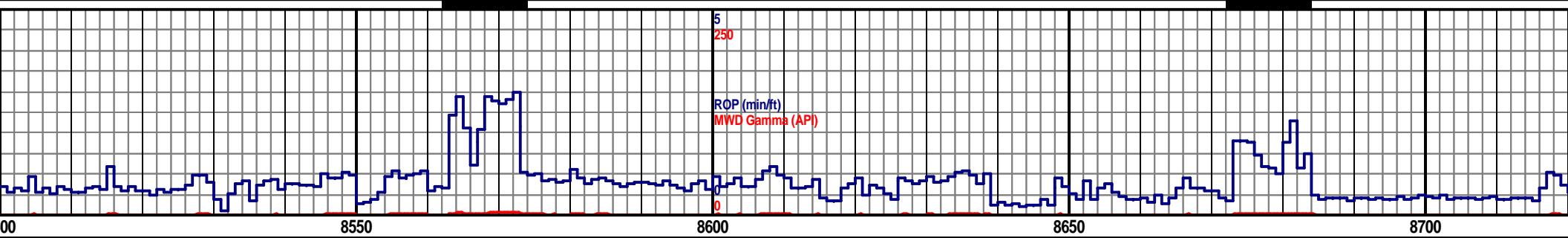
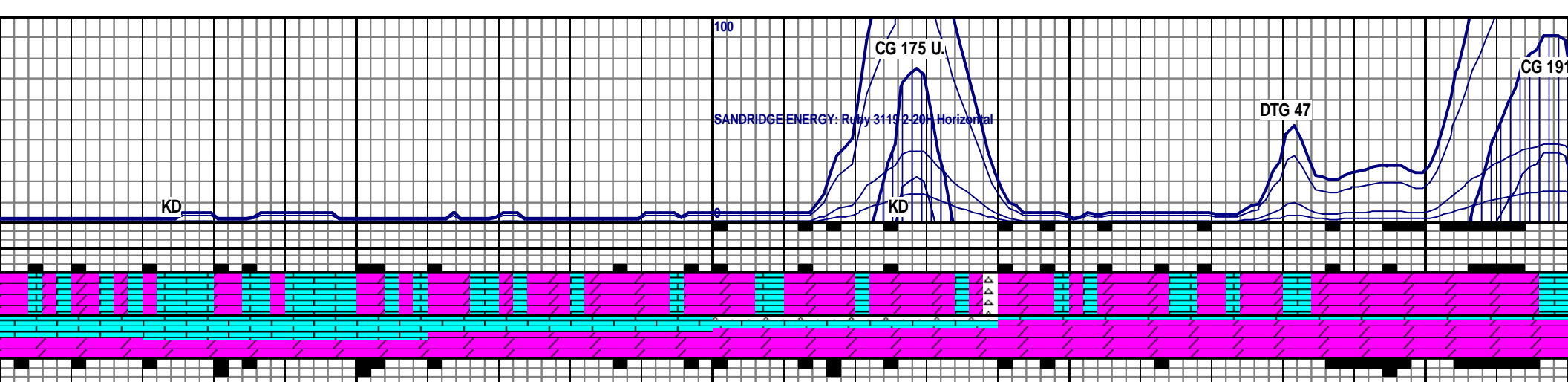
5800



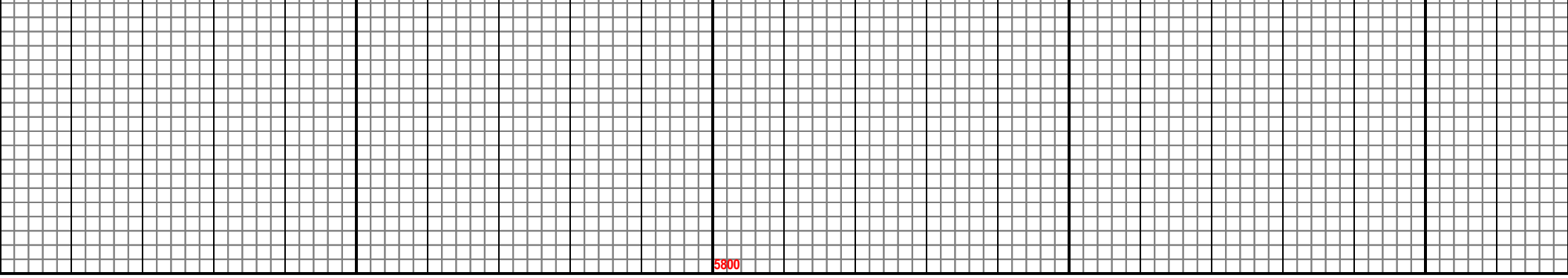
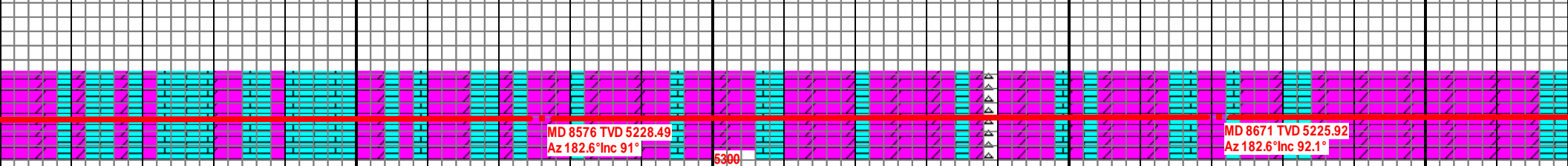
<p>RM- MOD SFT, OR, LS: OFF CHLKY, FNT ME BRIT, VIS CUT, NO</p>	<p>DOL: MSTLY OFF WHT- WHT, OCC LT TAN, MSTLY BLKY, PRED MOD FRM- MOD SFT, SME BRIT, MSTLY MICRO FN- V FN XLN, TR SUCRO, SME HL FRAC POR, LS: OFF WHT- WHT, DCRG LT TAN, MSTLY BLKY, PRED FRM- MOD FRM, SME CHLKY, FNT TR PP VUG POR, DCRG CHT: PRED WHT, SCAT OFF WHT/OPQ, V HD- HD, SME BRIT, PRED SPLNTY- ANG, TR PP VUG POR, SCAT YEL- BRI YEL FLOR, NO VIS CUT, NO RESD RING</p>	<p>4800 TVD WOB: 26.6 K RPM: 62 SPM: 87 PP: 2141</p>	<p>DOL: PRED OFF WHT- WHT, DCRG LT TAN, MSTLY BLKY, PRED MICRO FN- V FN XLN, TR HL FRAC POR, MSTLY MOD FRM- FRM, OCC BRIT, LS: OFF WHT- WHT, DCRG LT TAN, MSTLY BLKY, PRED FRM- MOD FRM, SME CHLKY, FNT TR PP VUG POR, DCRG YEL FLOR, NO VIS CUT, NO RESD RING</p>	<p>MUD DATA WT-8.4 VI YP-1 GEL SOL- 1.0 PH-10.0 C CA-650</p>
---	---	--	--	--

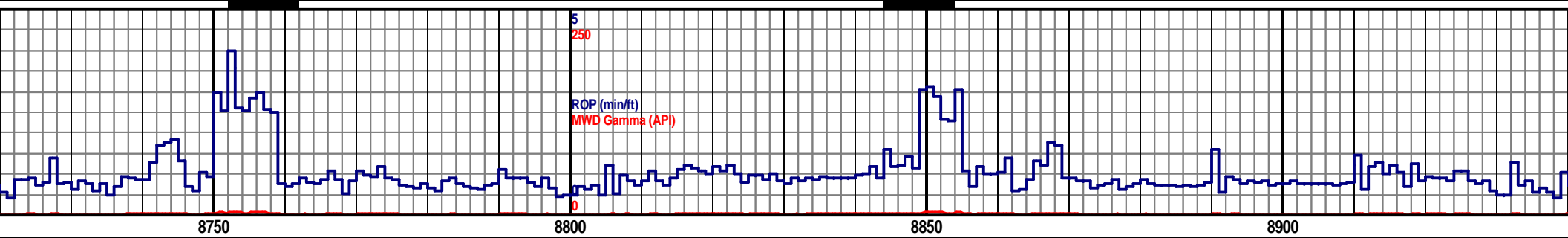
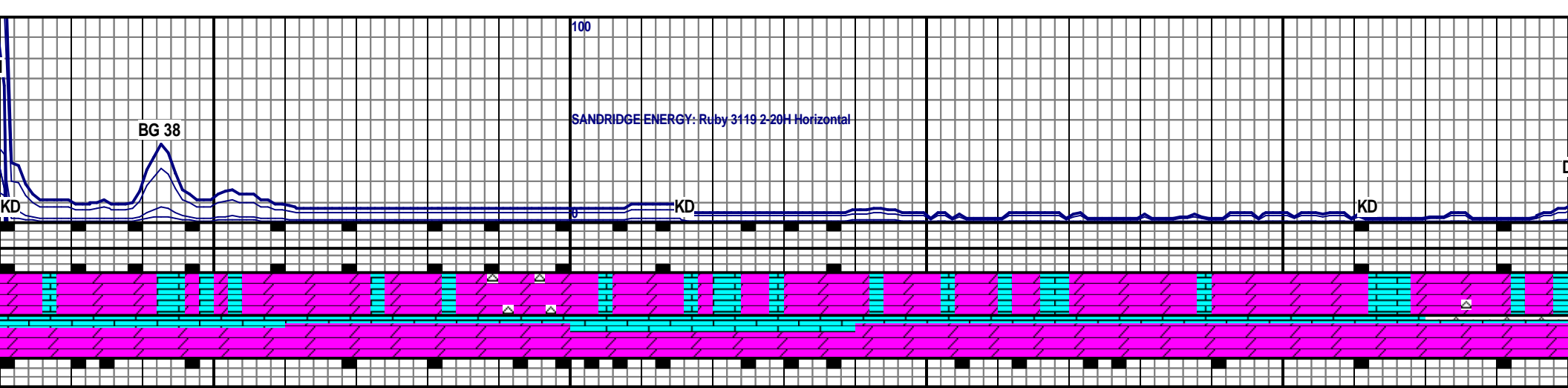


5800



A- @ 8,479' S-28 PV-1 1/1 FIL-60.0 H20-99.0 L-27,000	LS: OFF WHT- WHT, OCC TAN, PRED BLKY, OCC PLTY, MSTLY FRM- MOD FRM, SME CHLKY, TR HL FRAC POR, OCC BRIT, PRED FN- V FN XLN, DOL: OFF WHT- WHT, OCC TAN, MSTLY BLKY, OCC PLTY, TR CHT, OCC DULL YEL FLOR, NO RESD RING, NO VIS CUT	4800 TVD DOL: MSLTY OFF WHT- WHT, SME LT TAN, MSTLY BLKY, TR SUCRO, TR HL FRAC POR, PRED MOD FRM- FRM, OCC BRIT, MSTLY MICRO FN- V FN XLN LS: OFF WHT- WHT, OCC LT TAN, MSTLY BLKY, PRED FRM- MOD FRM, SME CHLKY, CHT: PRED WHT -OFF WHT, TR LT GRY, MSTLY ANG- SUB ANG, PRED BLKY, TR BLKY, HRD- V FRM, V FN XLN, BRGHT GLD-YEL FLOR, MLKY GRN RESD RING, MLKY GRN CUT	WOB: 20.6 K RPM: 61 SPM: 86 PP: 2283
--	--	--	---



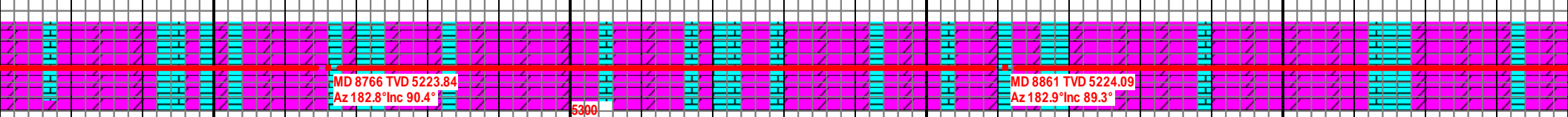


MSLTY OFF WHT- WHT, SME LT TAN, MSTLY BLKY, OCC SUCRO, TR PLTY,  
 MOD FRM- FRM, SUB ANG, MICRO FN- V FN XLN LS: OFF WHT- WHT, LT TAN,  
 BLKY, TR PLTY, MSTY FRM- MOD FRM, MICRO FN- V FN XLN, TR CHT, DCRSNG  
 T GLD-YEL FLOR, TR DUL YEL FLOR, MLKY GRNISH-WHT RESD RING, MLKY  
 H-WHT CUT

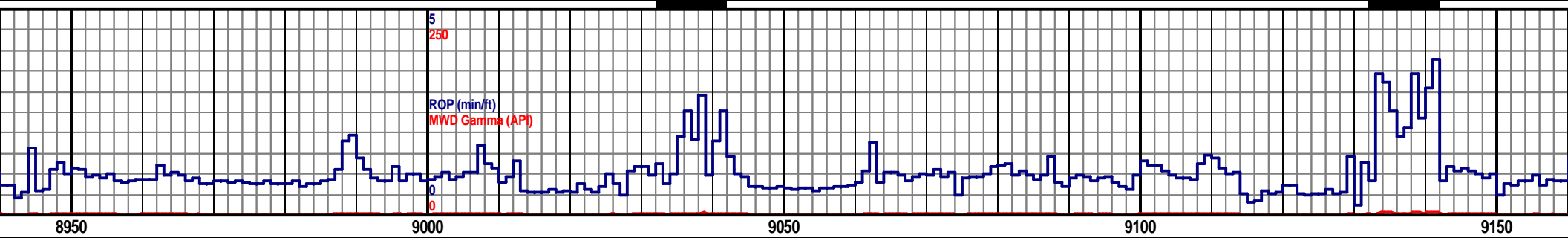
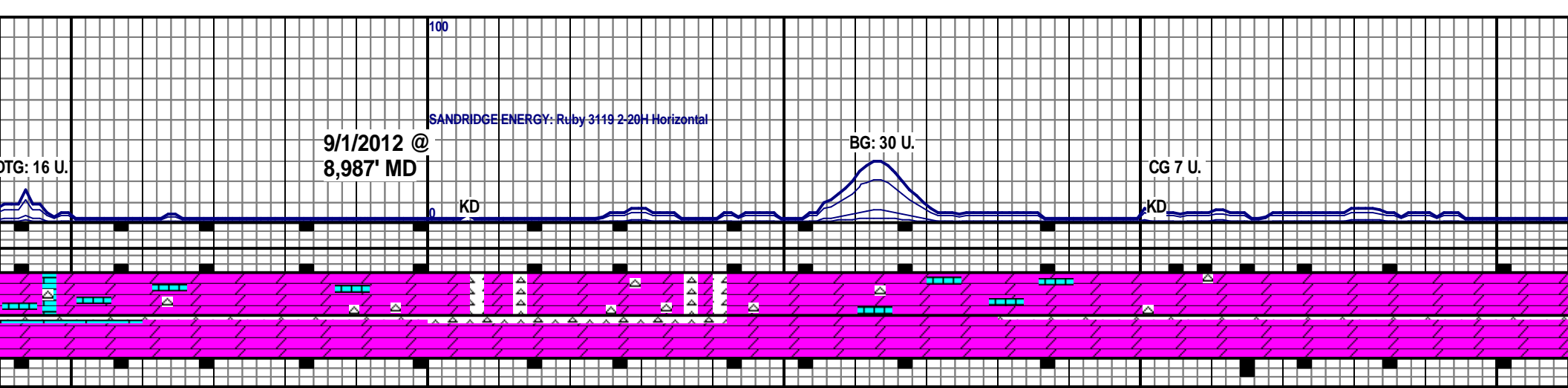
4800 TVD

DOL: MSLTY OFF WHT- WHT, SME LT TAN, MSTLY BLKY, TR SUCRO, PRED  
 MOD FRM- FRM, SUB ANG- SUB RND, TR PLTY, MICRO FN- FN XLN LS:  
 MSTLY OFF WHT- WHT, SME LT TAN, PRED BLKY, TR PLTY, MSTY FRM-  
 MOD FRM, MICRO FN- V FN XLN, TR CHT, TR BRGHT, GLD-YEL FLOR, TR  
 DUL YEL FLOR, MLKY GRNISH-WHT RESD RING, MLKY GRNISH-WHT CUT

DOL: PRED OFF WHT, SME WH  
 RND, MICRO FN- FN XLN, MOD  
 WHT, OCC LT TAN, MSTLY BLKY  
 FRM, MICRO FN- V FN XLN, CHT  
 WHT, MSTLY BLKY TO ANG, SM  
 MSTLY DULL GLD FLOR, TR BR  
 RING, MLKY GRNISH WHT CUT

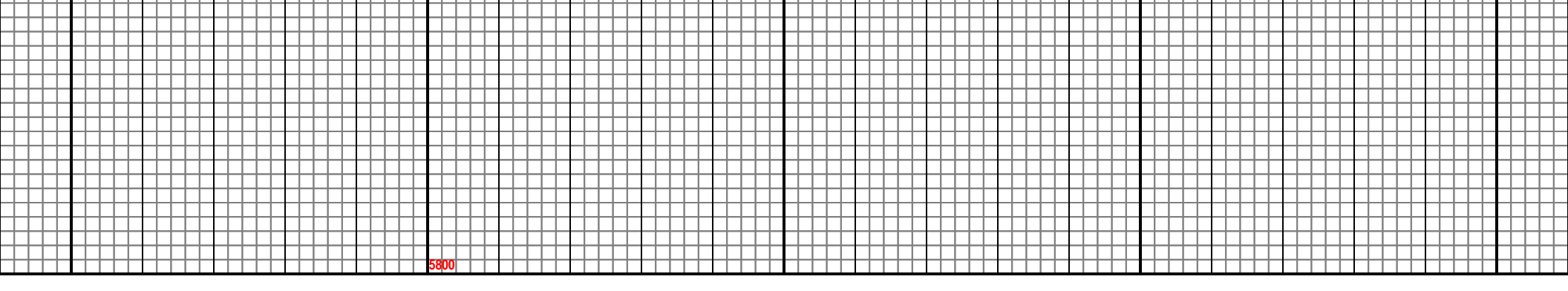
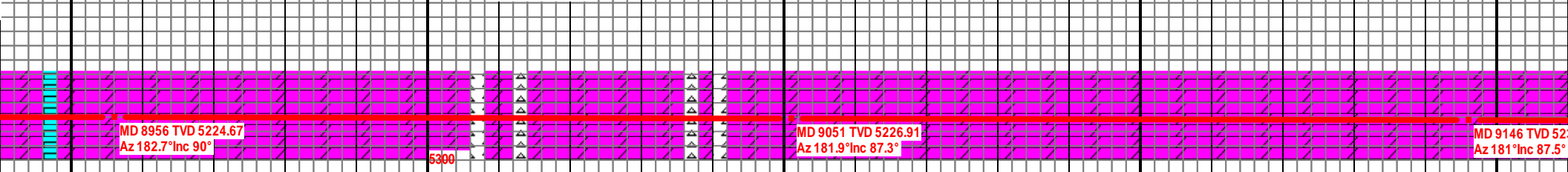


5800



4800 TVD

WOB: 23.9 K DOL: MSTLY OFF WHT TO WHT, OCC CRM, MSTLY BLKY, SME SUB RND TO SUB  
 RPM: 60 ANG, SME PLTY, FN TO V FN XLN, SME MICRO FN XLN, MOD SFT TO MOD FRM, CHT:  
 SPM: 85 MSTLY WHT TO LT GY, SME OFF WHT, MSTLY BLKY, OCC ANG TO SUB ANG, V FN  
 PP: 2207 XLN, MOD FRM TO FRM, SME BRIT, TR LS, SCAT PR GLD FLOR, FNT WHT/GRN RESD  
 DOL: PRED OFF WHT TO DULL WHT, OCC CRM TO LT  
 TR SUC TXT, MSTLY BLKY, SUB RND TO SUB ANG, MO  
 GY, MSTLY BLKY TO ANG, SME SUB ANG, FN TO V FN  
 TO FRM, SME BRIT, TR LS, TR GLAU, DULL GLD FLOR  
 RING



100

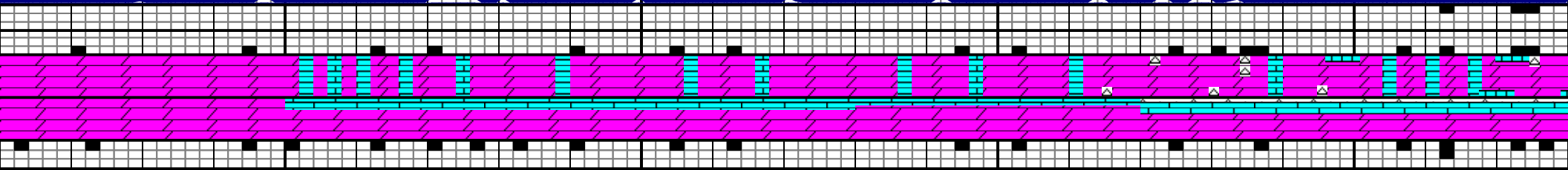
SANDRIDGE ENERGY: Ruby 3119 2-20H Horizontal

CG 4 U.

KD

CG 5 U.

KD



5

250

ROP (min/ft)

MWD Gamma (API)

0

9200

9250

9300

9350

TAN, SME LT GY, FN TO V FN XLN,  
D FRM, CHT: MSTLY WHT TO LT  
XLN, SME MICRO XLN, MOD FRM  
THRUOUT, NO VIS CUT, NO RESD.

DOL: MSTLY OFF WHT- WHT, TR LT TAN, PRED V FN- FN XLN, OCC MICRO  
XLN, MSTLY BLKY, PRED MOD FRM- FRM, SCAT BRIT, TR HL FRAC POR,  
LS: MSTLY WHT- OFF WHT, MSTLY BLKY, BCMG BLKY- PLTY, MSTLY FRM-  
MOD FRM, FN- V FN XLN, TR CHT, SCAT DULL YEL FLOR, NO CUT, NO  
RESD RING

WOB: 26.3  
K RPM: 62  
SPM: 86  
PP: 2669

DOL: PRED OFF WHT- WHT, INCRG LT TAN, MSTLY FN- V FN XLN, SME  
PRED BLKY, MSTLY MOD FRM- FRM BCMG FRM- MOD FRM, SCAT BRIT  
POR, LS: PRED WHT- OFF WHT, MSTLY BLKY- PLTY, MSTLY FRM- MO  
FN- V FN XLN, CHT: MSTLY WHT, SME OFF WHT- FRSTD, V ANG , SPL  
FNT TR PP VUG POR, SCAT DULL YEL FLOR, NO CUT BCMG V FNT M  
NO RESD RING BCMG FNT MLKY GRN RESD RING

4800 TVD

31.22

5300

MD 9241 TVD 5235.36  
Az 180.9° Inc 87.5°

MD 9336 TVD 5239.09  
Az 180.8° Inc 88°

5800

100

SANDRIDGE ENERGY: Ruby 3119 2-20H Horizontal

CG 5 U.

KD

KD

KD



5

250

ROP (min)  
MWD Gamma (API)

0

9400

9450

9500

9550

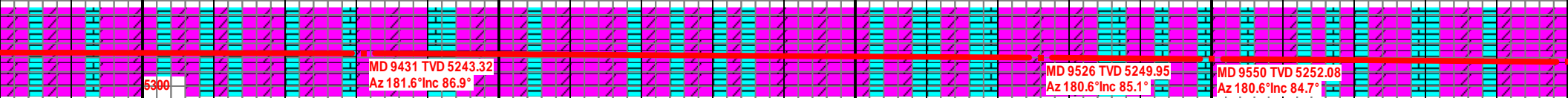
9600

E MICRO XLN,  
T, TR HL FRAC  
D FRM, PRED  
NTY, V HD- HD,  
LKY GRN CUT,

4800 TVF

DOL: MSTLY OFF WHT- LT TAN, SCAT WHT THRU OUT, BLKY, PRED V FN- FN XLN, TR  
MICRO FN, MSTLY FRM- MOD FRM, OCC BRIT, TR HL FRAC POR, LS: PRED OFF WHT- WHT,  
BLKY-PLTY, PRED FRM, OCC MOD FRM, FN- V FN XLN, CHT, MSTLY WHT- OPQ, OCC OFF  
WHT, SPLNTY- BLKY, ANG- SUB ANG, V HD- BRIT, TR PP VUG POR, SLI INCRG DULL YEL  
FLOR, FNT MLKY GRN/YEL CUT, LT YEL RESD RING

DOL: PRED OFF WHT- LT TAN, SCAT WHT SLI DCRG, MSTLY BLKY, PRED V FN- FN  
XLN, TR MICRO FN XLN, PRED FRM- MOD FRM, OCC BRIT, INCRG TR HL FRAC POR,  
LS: PRED OFF WHT- WHT, MSTLY BLKY-PLTY, PRED FRM, SCAT MOD FRM, MSTLY  
FN- V FN XLN, CHT: MSTLY WHT- OPQ, OCC OFF WHT, SPLNTY- BLKY, ANG- SUB  
ANG, V HD- BRIT, TR PP VUG POR, SCAT DULL YEL- YEL FLOR, FNT MLKY YEL/GRN  
CUT, FNT YEL RESD RING



MD 9431 TVD 5243.32  
Az 181.6° Inc 86.9°

MD 9526 TVD 5249.95  
Az 180.6° Inc 85.1°

MD 9550 TVD 5252.08  
Az 180.6° Inc 84.7°

5800

100

SANDRIDGE ENERGY: Ruby 3119 2-20H Horizontal

GAS SCALE 0 TO 100

0

5 TD WELL @  
250 9,600' MD ON  
09/01/2012

ROP (min/ft)

MWD Gamma (API)

ROP IN BLUE

0 GAMMA IN RED  
0

00 96

4800 TVD

PTB

MD 9600 TVD 5256.7

Az 180.6° Inc 84.7°

5800