

Company: Ranev Oil Co.  
Well: Vera White #9  
Field: Cooper  
County: Graham  
State: Kansas

Company: Ranev Oil Co.  
Well: Vera White #9  
Field: Cooper  
County: Graham  
State: Kansas

Location: 2310' FSL & 330' FWL  
SEC 2 TWP 10S RGE 21W  
API #: 15 065 23788  
Permanent Datum: Ground Level Elevation: 2283'  
Log Measured From: KB 5' AGL  
Drilling Measured From: KB  
Other Services: Elevation: K.B. 2288', D.F. 2287', G.L. 2283'

Date	10-21-11
Run Number	One
Depth Driller	3840'
Depth Logger	3839'
Bottom Logged Interval	3837'
Top Log Interval	3100'
Casing Driller	218'
Casing Logger	218'
Bit Size	7 7/8"
Type Fluid in Hole	Chemical Mud
Density / Viscosity	9.2/47
pH / Fluid Loss	10.5/5.4
Source of Sample	Pit
Rm @ Meas. Temp	1.95@75degf
Rmf @ Meas. Temp	1.46@75degf
Rmc @ Meas. Temp	3.12@75degf
Source of Rmf / Rmc	Calculated
Rm @ BHT	1.28@114degf
Time Circulation Stopped	7:30 p.m.
Time Logger on Bottom	11:00 p.m.
Maximum Recorded Temperature	114
Equipment Number	T045
Location	Hays, KS.
Recorded By	L. Smith
Witnessed By	Mr. J R Haselhorst

<<< Fold Here >>>

All interpretations are opinions based on inferences from electrical or other measurements and we cannot and do not guarantee the accuracy or correctness of any interpretation, and we shall not, except in the case of gross or willful negligence on our part, be liable or responsible for any loss, costs, damages, or expenses incurred or sustained by anyone resulting from any interpretation made by any of our officers, agents or employees. These interpretations are also subject to our general terms and conditions set out in our current Price Schedule.

**Comments**

Riga exit, N to T, E to 1st rd N, N approx. 5 mi., location on E side

Thank you for using The Perforators LLC  
Hays, KS (785) 621-4604

Database File: roverawhite#9oh.db  
 Dataset Pathname: pass2.1  
 Presentation Format: kdillin2  
 Dataset Creation: Sat Oct 22 00:06:43 2011 by Calc Open-Cased 100827  
 Charted by: Depth in Feet scaled 1:600

0	GR (GAPI)	150
-200	SP (mV)	0

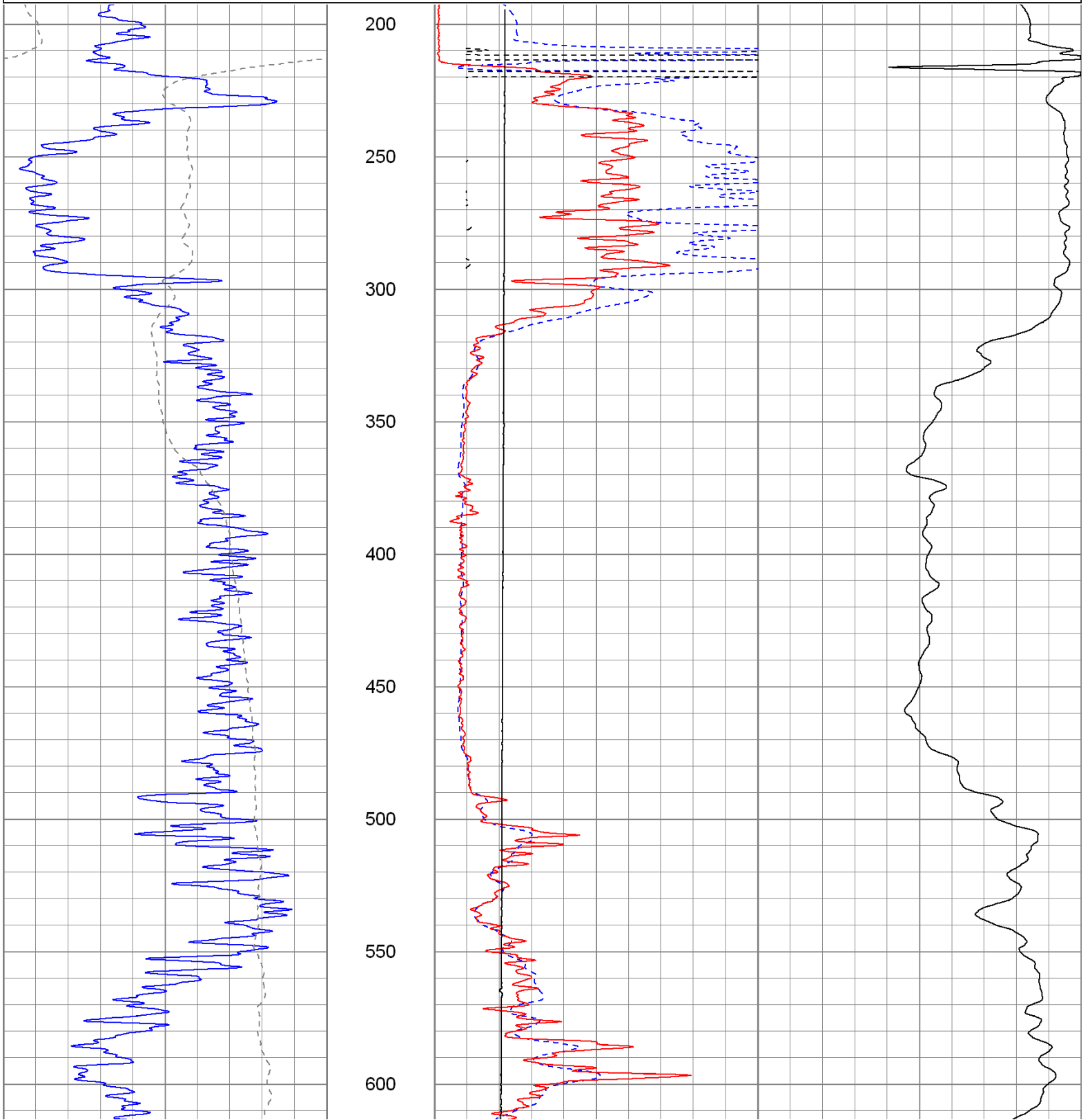
0	RILD (Ohm-m)	50
0	RLL3 (Ohm-m)	50

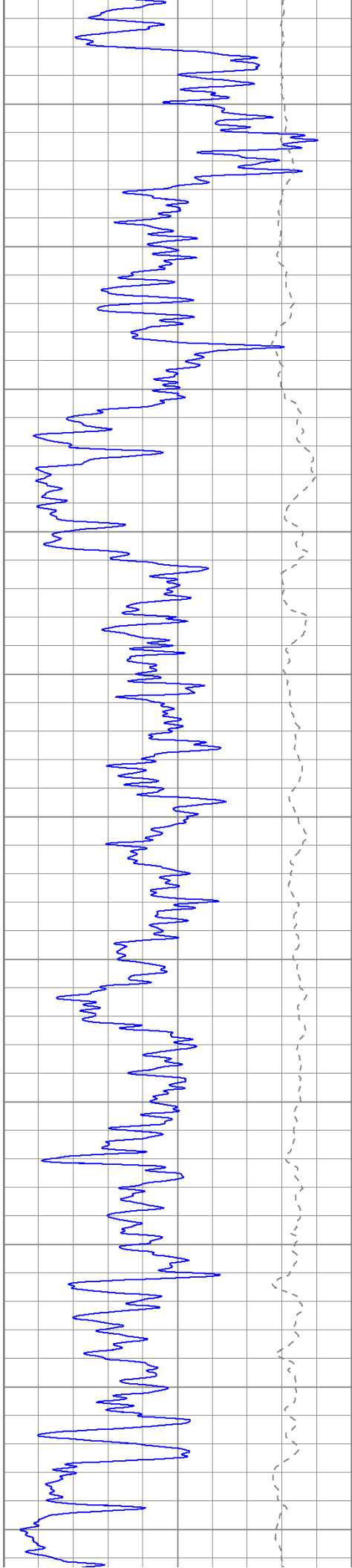
1000	CILD (mmho/m)	0
------	---------------	---

10000	LTEN (lb)	0
-------	-----------	---

50	RILD x 10 (Ohm-m)	500
----	-------------------	-----

50	RLL3 x 10 (Ohm-m)	500
----	-------------------	-----





650

700

750

800

850

900

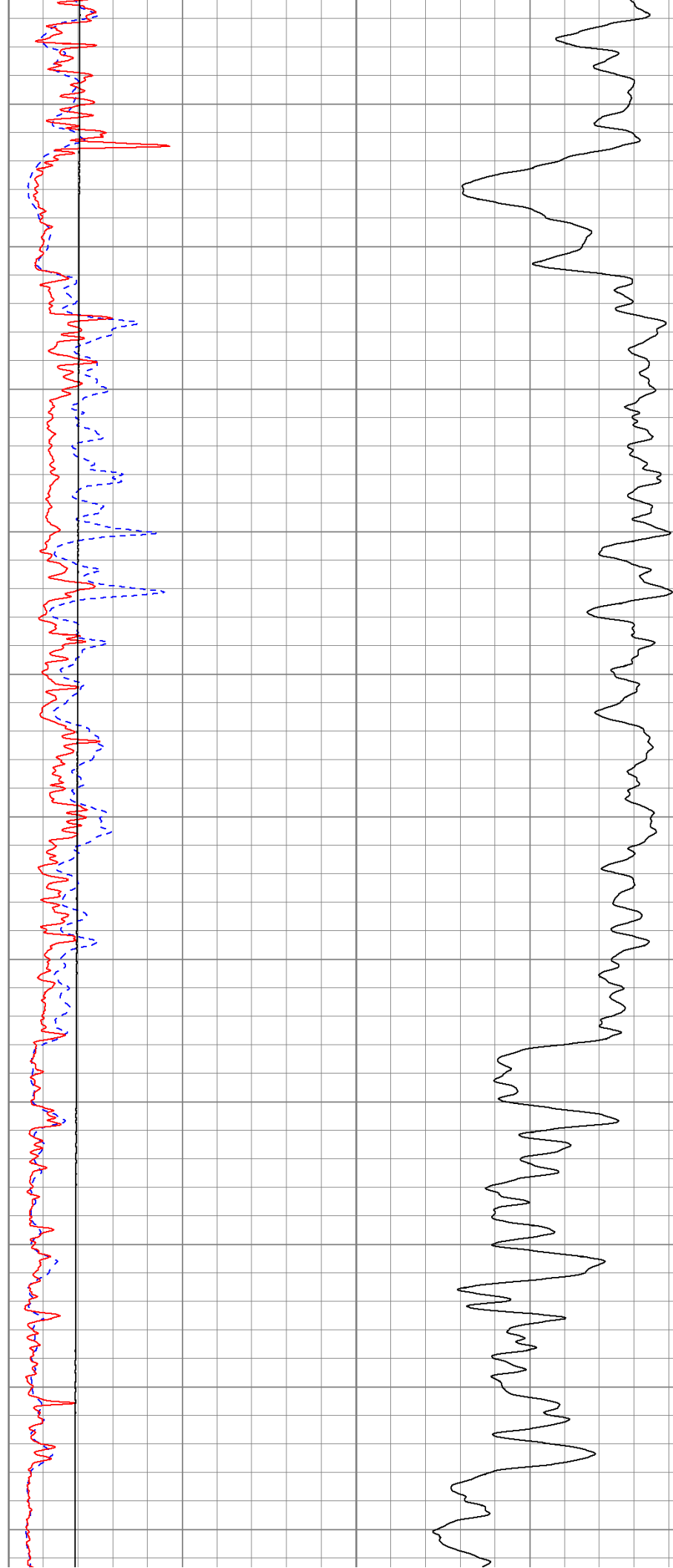
950

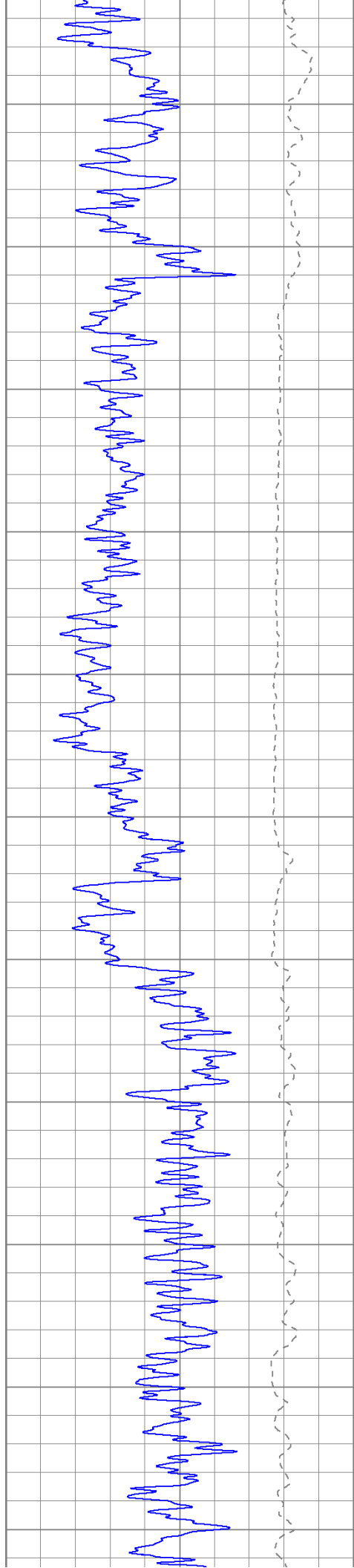
1000

1050

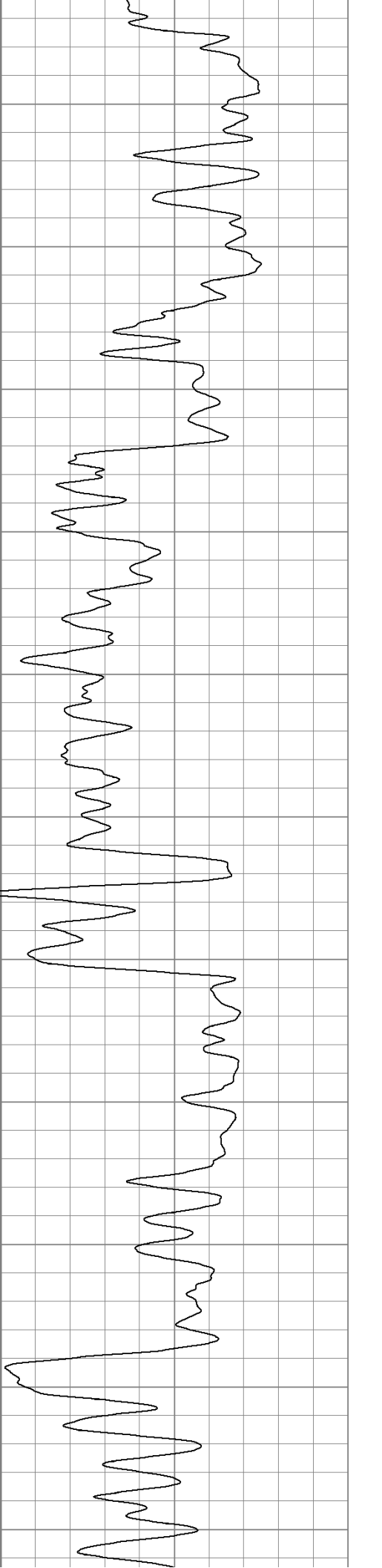
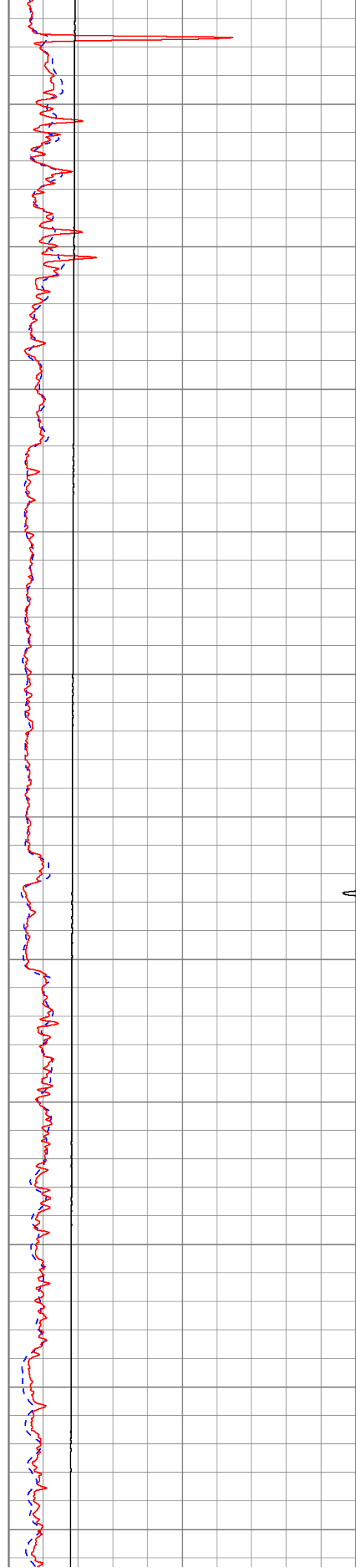
1100

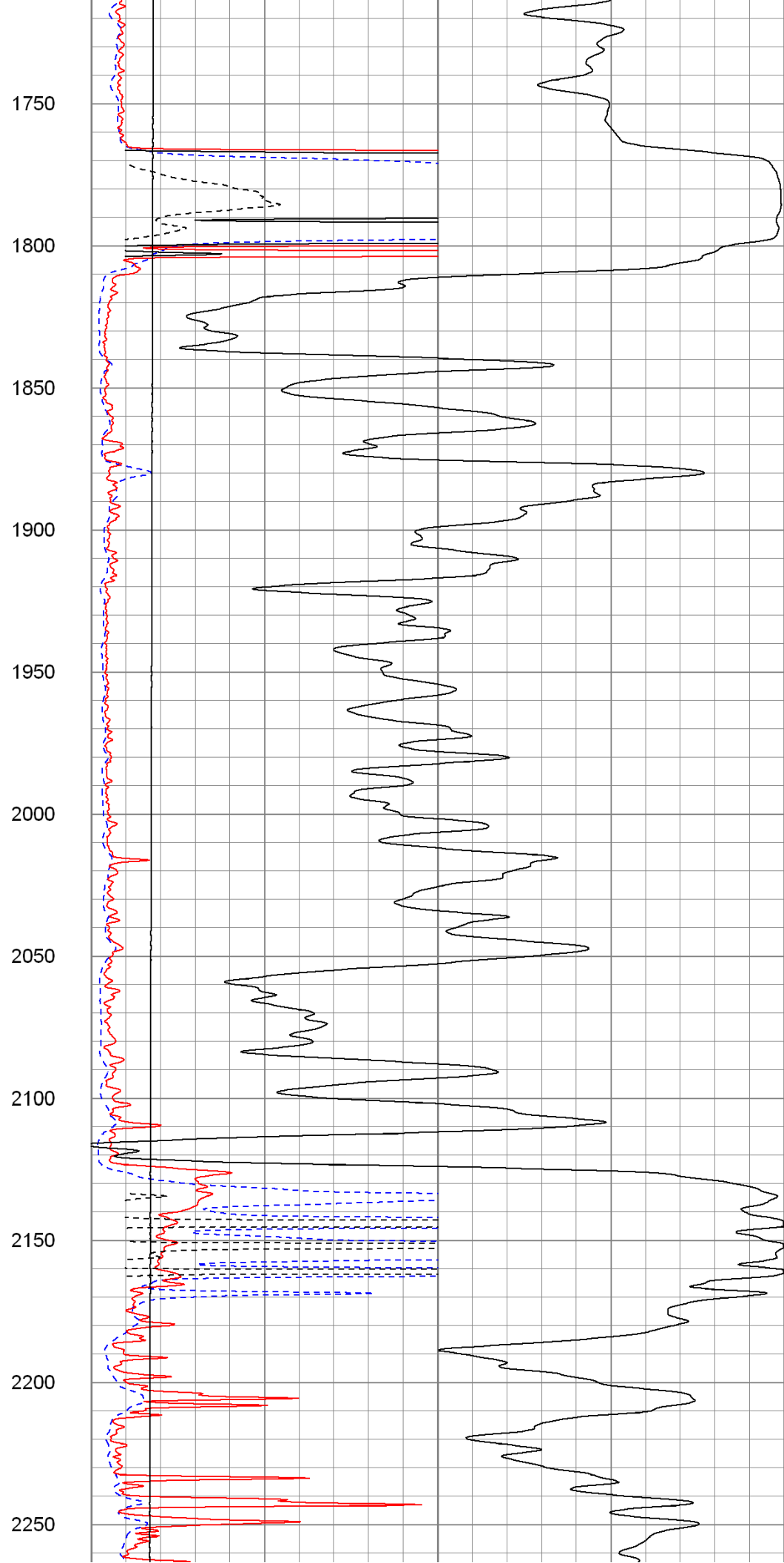
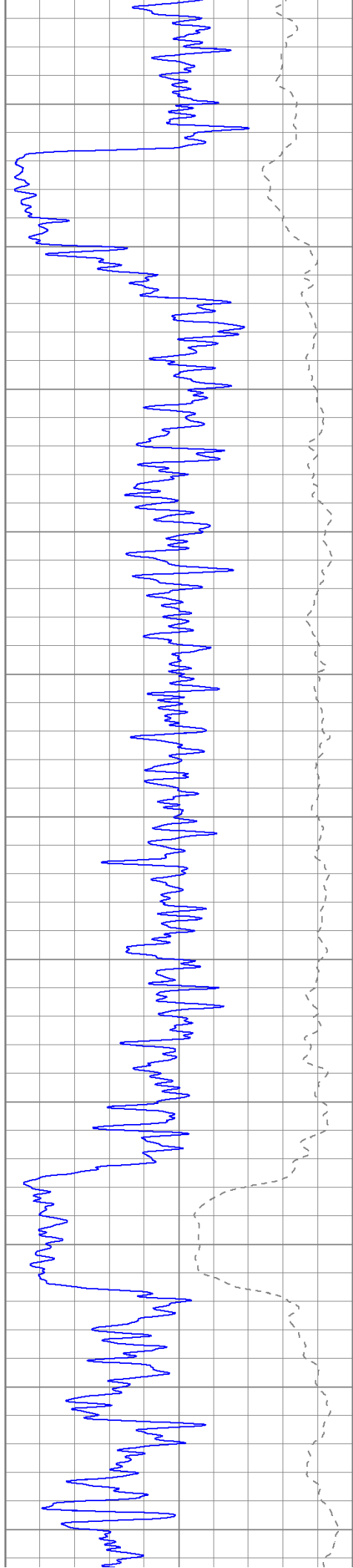
1150

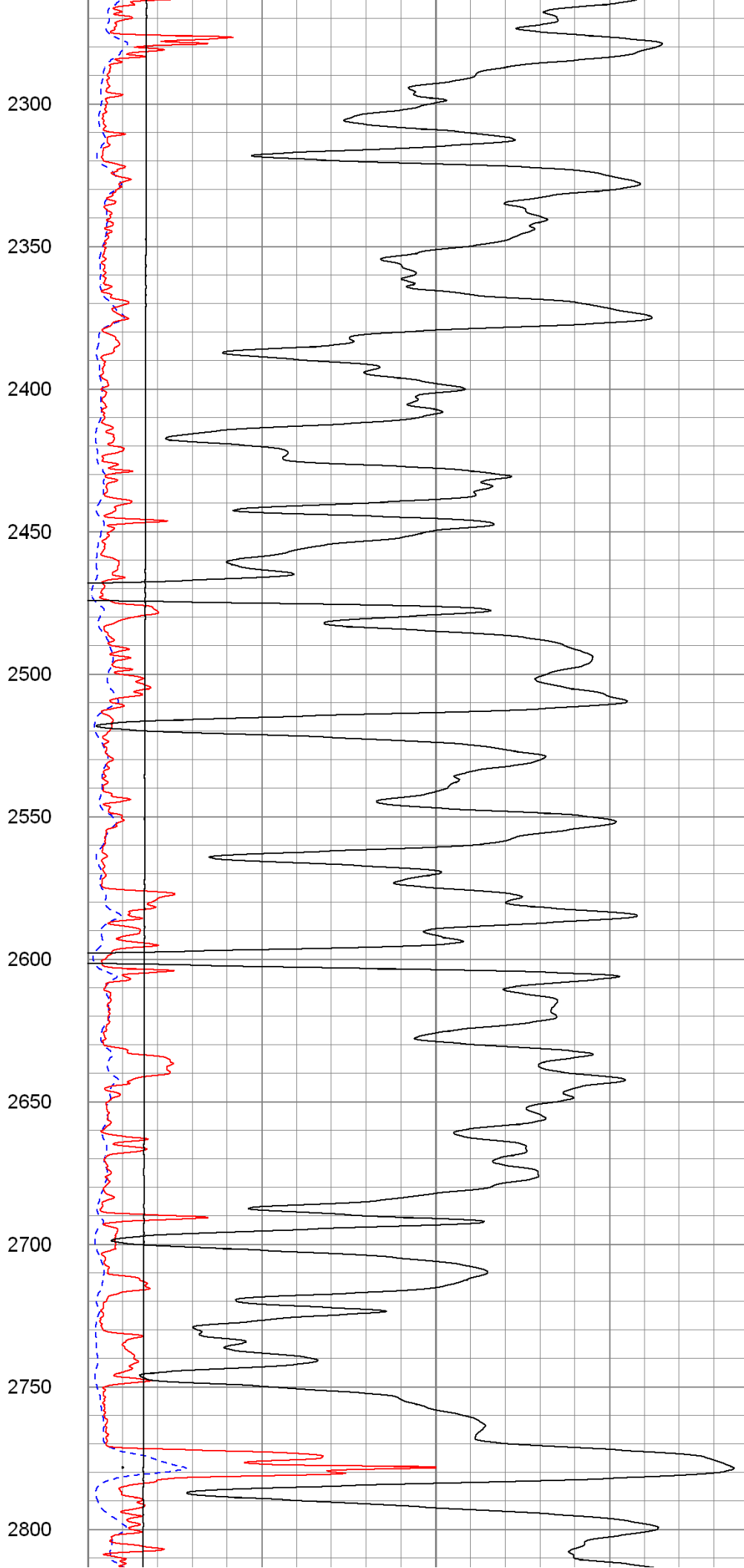
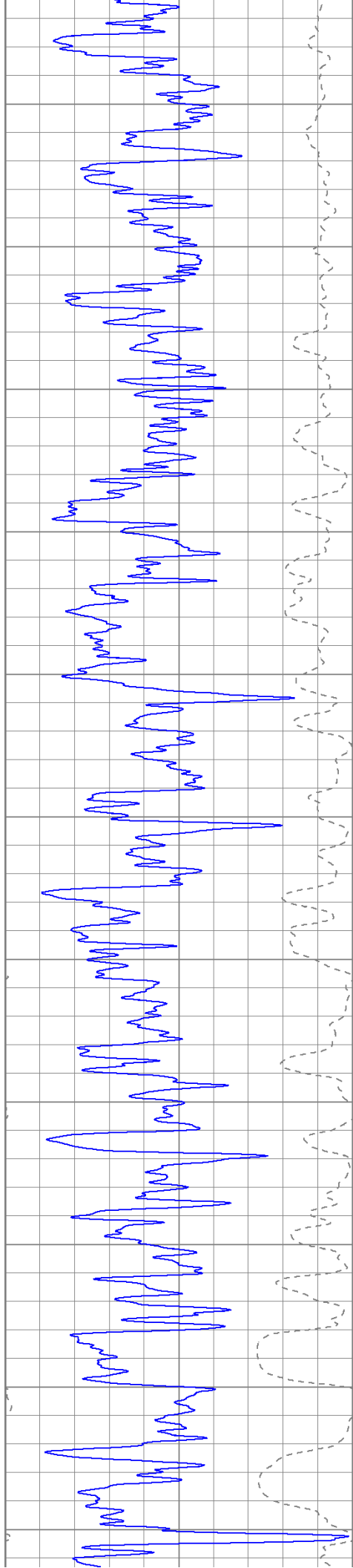


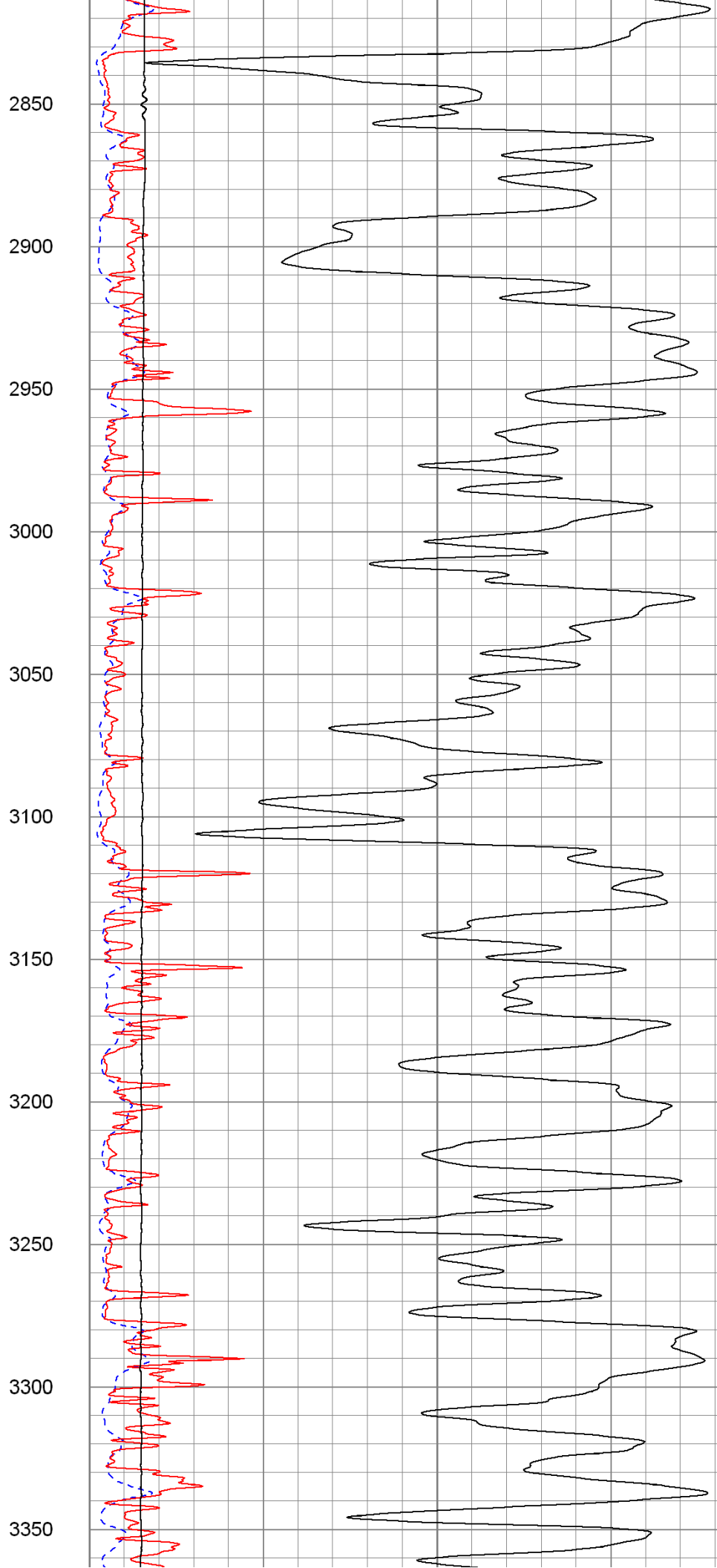
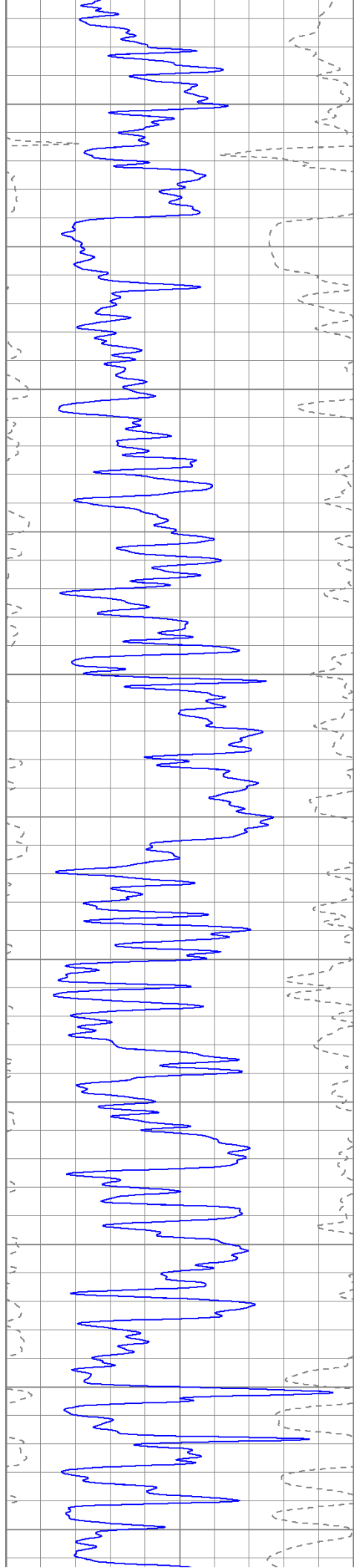


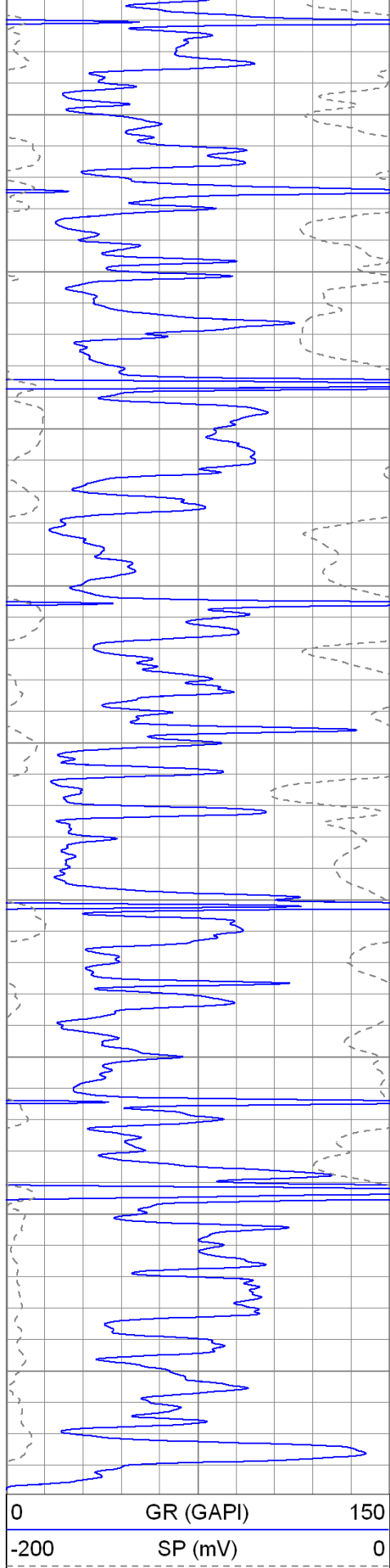
1200  
1250  
1300  
1350  
1400  
1450  
1500  
1550  
1600  
1650  
1700



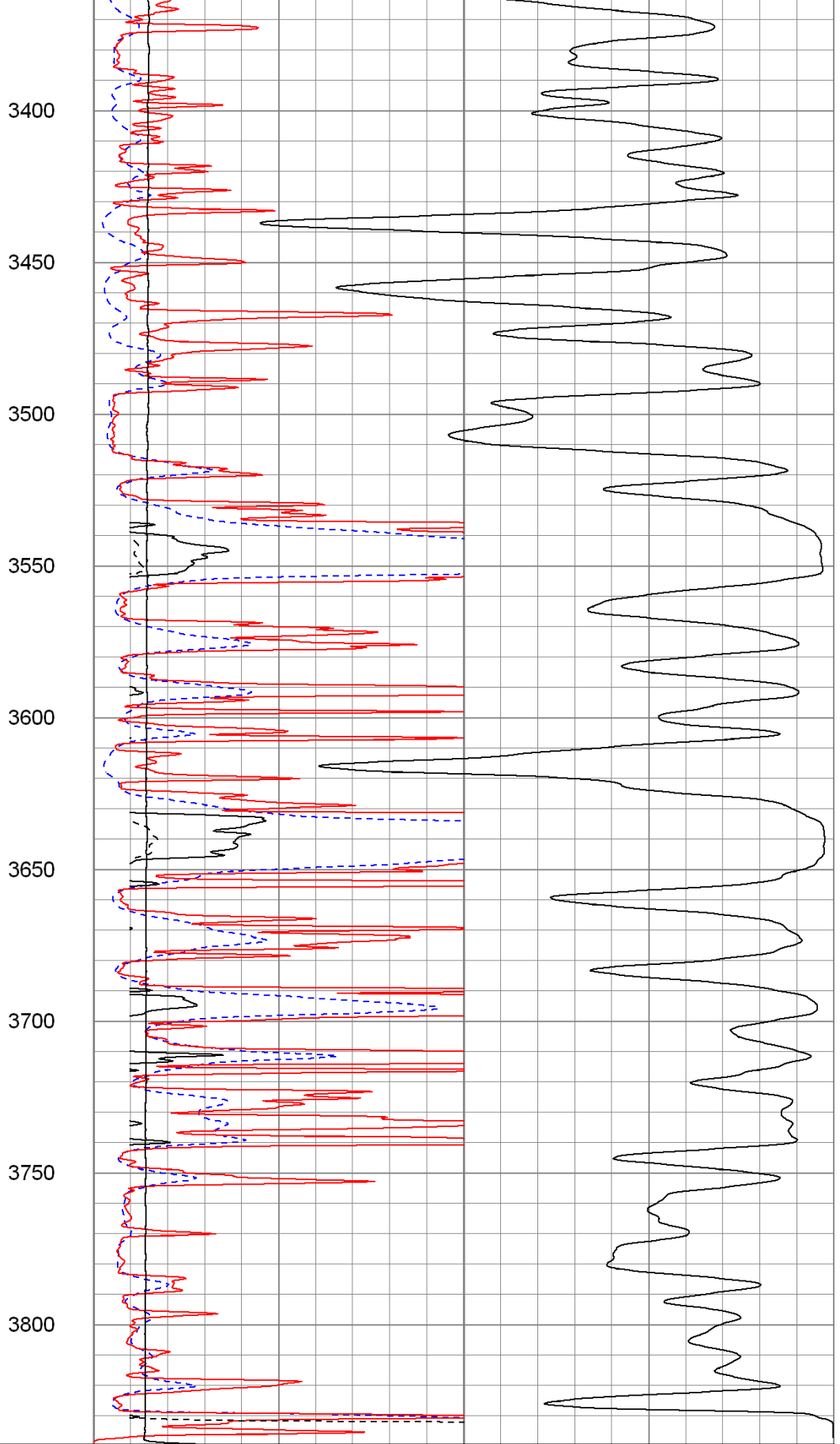








0	GR (GAPI)	150
-200	SP (mV)	0



0	RILD (Ohm-m)	50
0	RLL3 (Ohm-m)	50

1000	CILD (mmho/m)	0
10000	LTEN (lb)	0

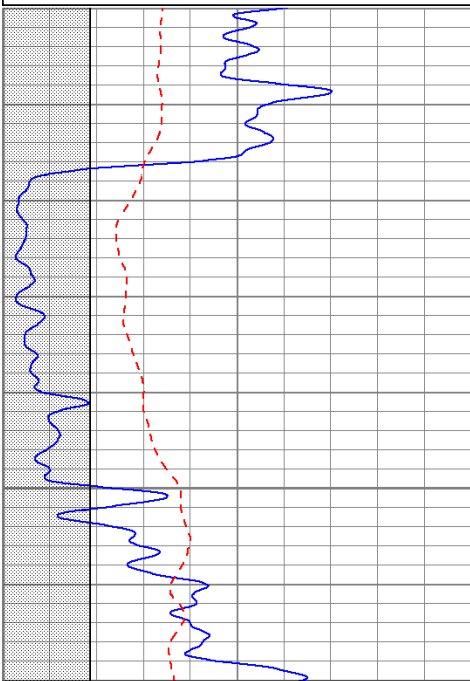
50	RILD x 10 (Ohm-m)	500
50	RLL3 x 10 (Ohm-m)	500

# Main Pass

Database File: roverawhite#9oh.db  
 Dataset Pathname: pass2.1  
 Presentation Format: krg  
 Dataset Creation: Sat Oct 22 00:06:43 2011 by Calc Open-Cased 100827  
 Charted by: Depth in Feet scaled 1:240

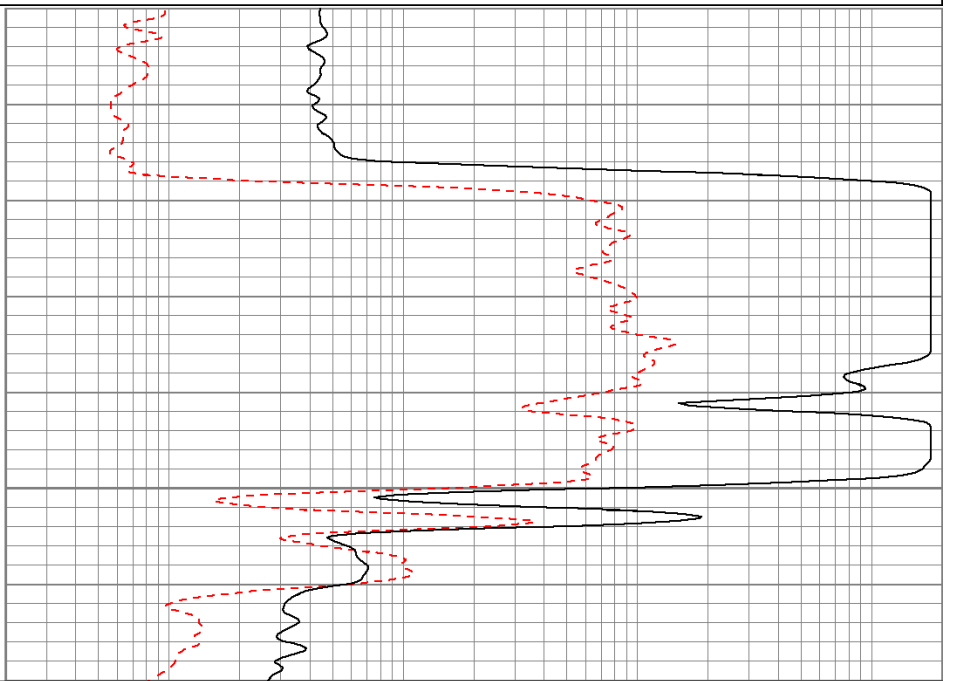
0	GR (GAPI)	150
-100	SP (mV)	100
6	DCAL (in)	16
6	BOREID (in)	16

100	NEU (NAPI)	950
0.2	RLL3 (Ohm-m)	2000



1750

1800



0	GR (GAPI)	150
-100	SP (mV)	100
6	DCAL (in)	16
6	BOREID (in)	16

100	NEU (NAPI)	950
0.2	RLL3 (Ohm-m)	2000

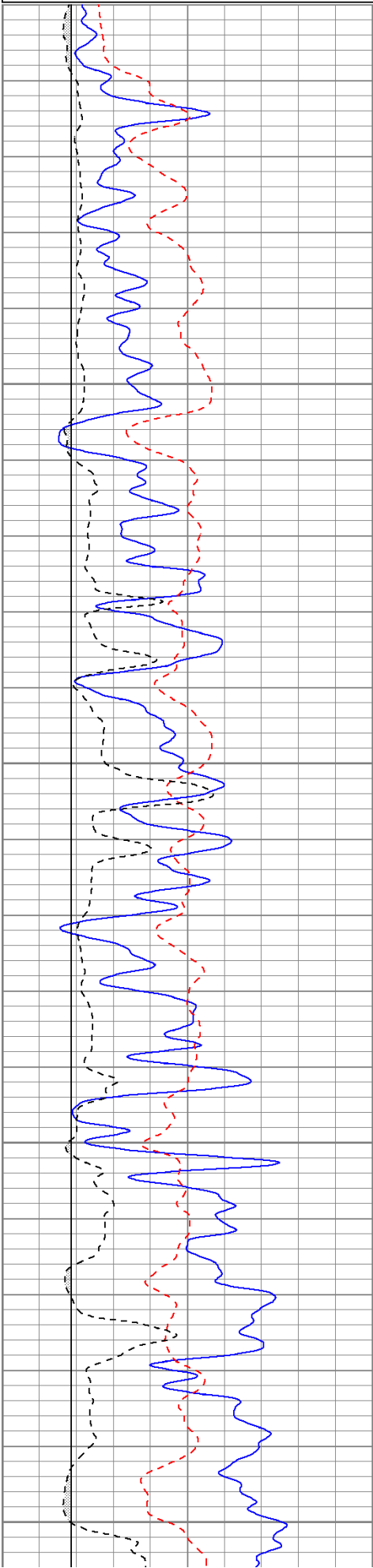
# Main Pass

Database File: roverawhite#9oh.db  
 Dataset Pathname: pass2.1  
 Presentation Format: krg  
 Dataset Creation: Sat Oct 22 00:06:43 2011 by Calc Open-Cased 100827  
 Charted by: Depth in Feet scaled 1:240

0	GR (GAPI)	150
-100	SP (mV)	100

100	NEU (NAPI)	950
0.2	RLL3 (Ohm-m)	2000

6	DCAL (in)	16
6	BOREID (in)	16



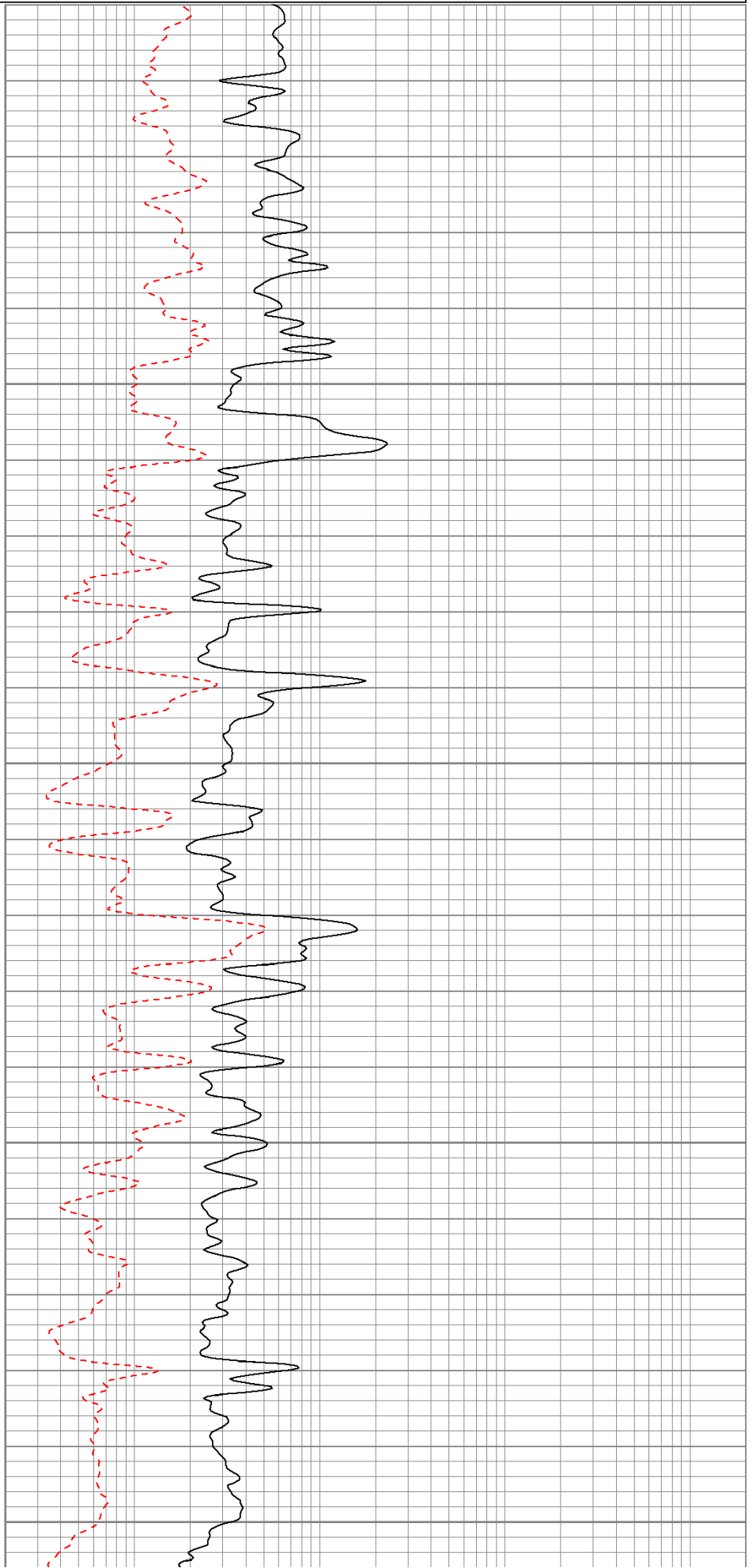
2900

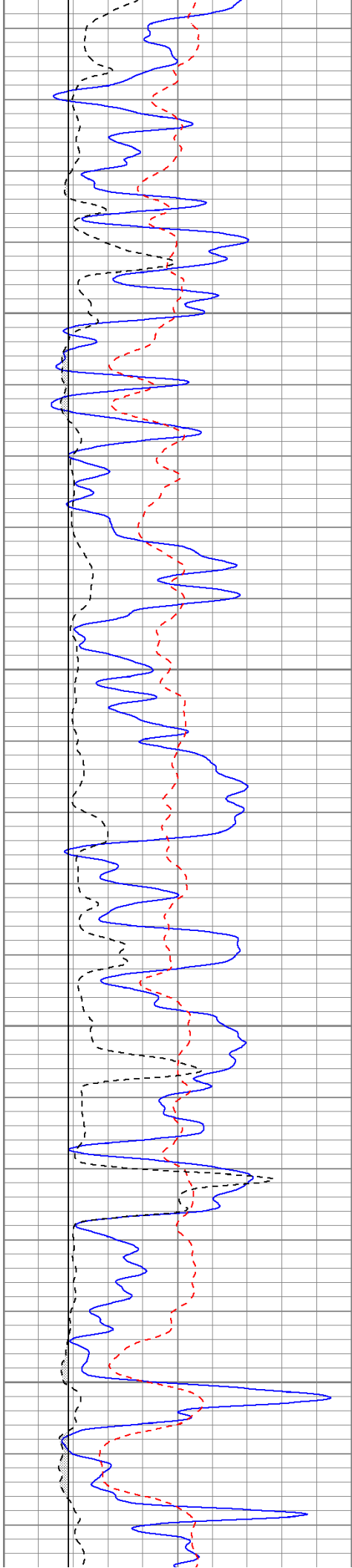
2950

3000

3050

3100



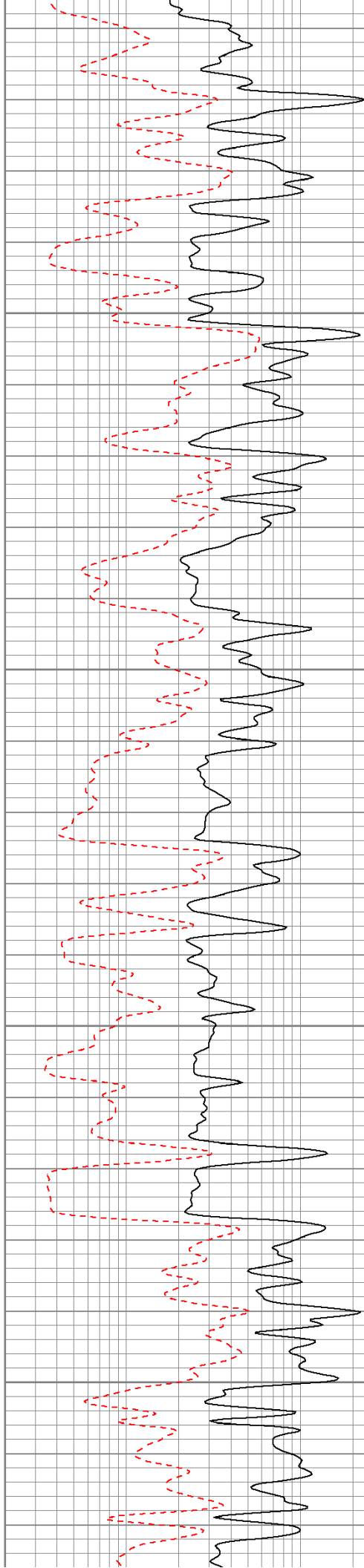


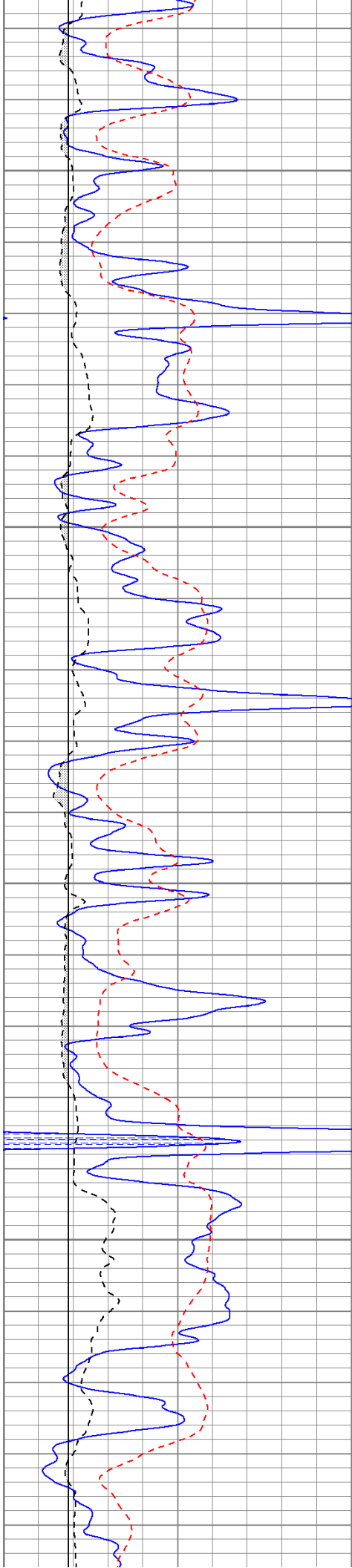
3150

3200

3250

3300



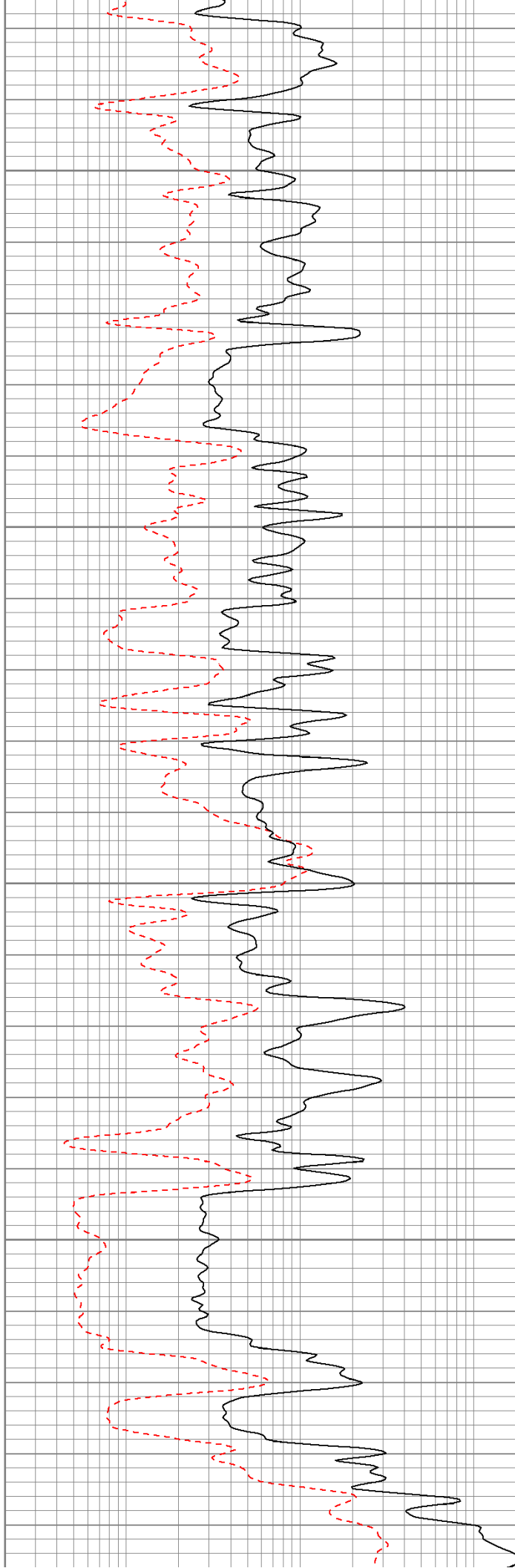


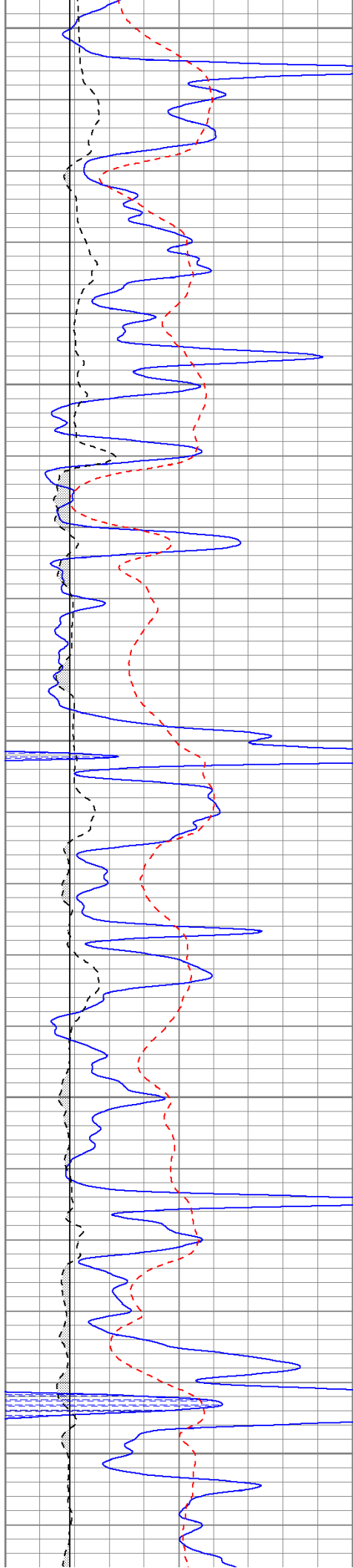
3350

3400

3450

3500





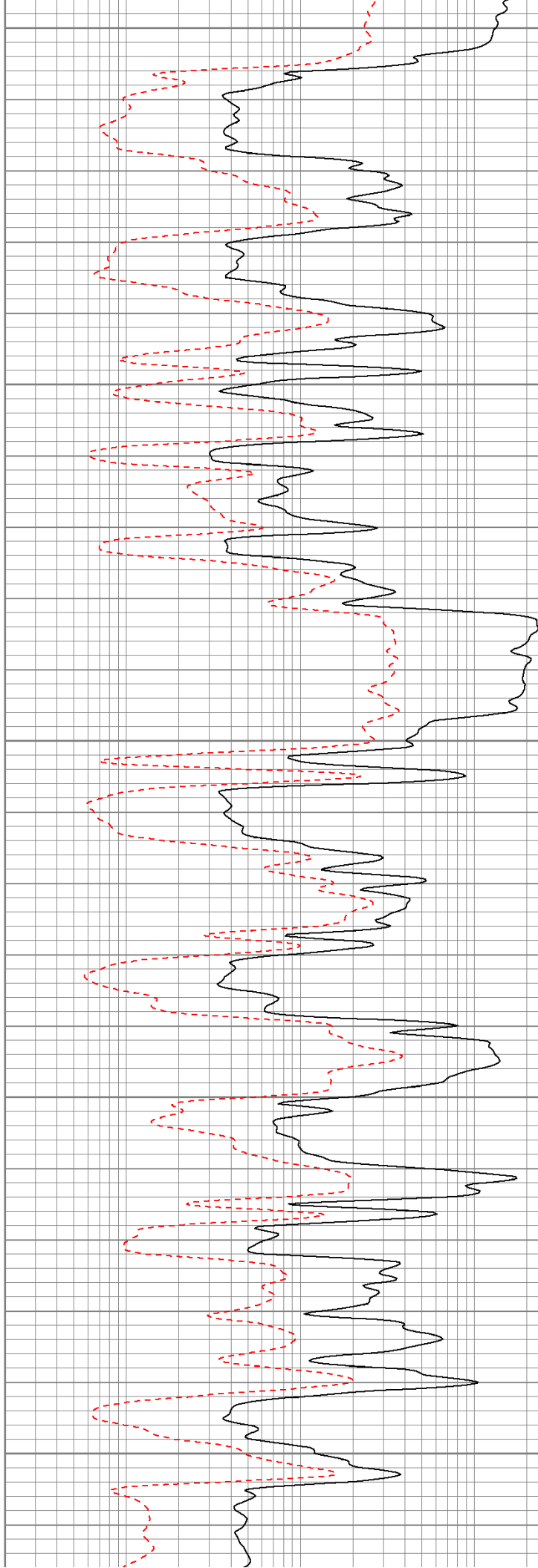
3550

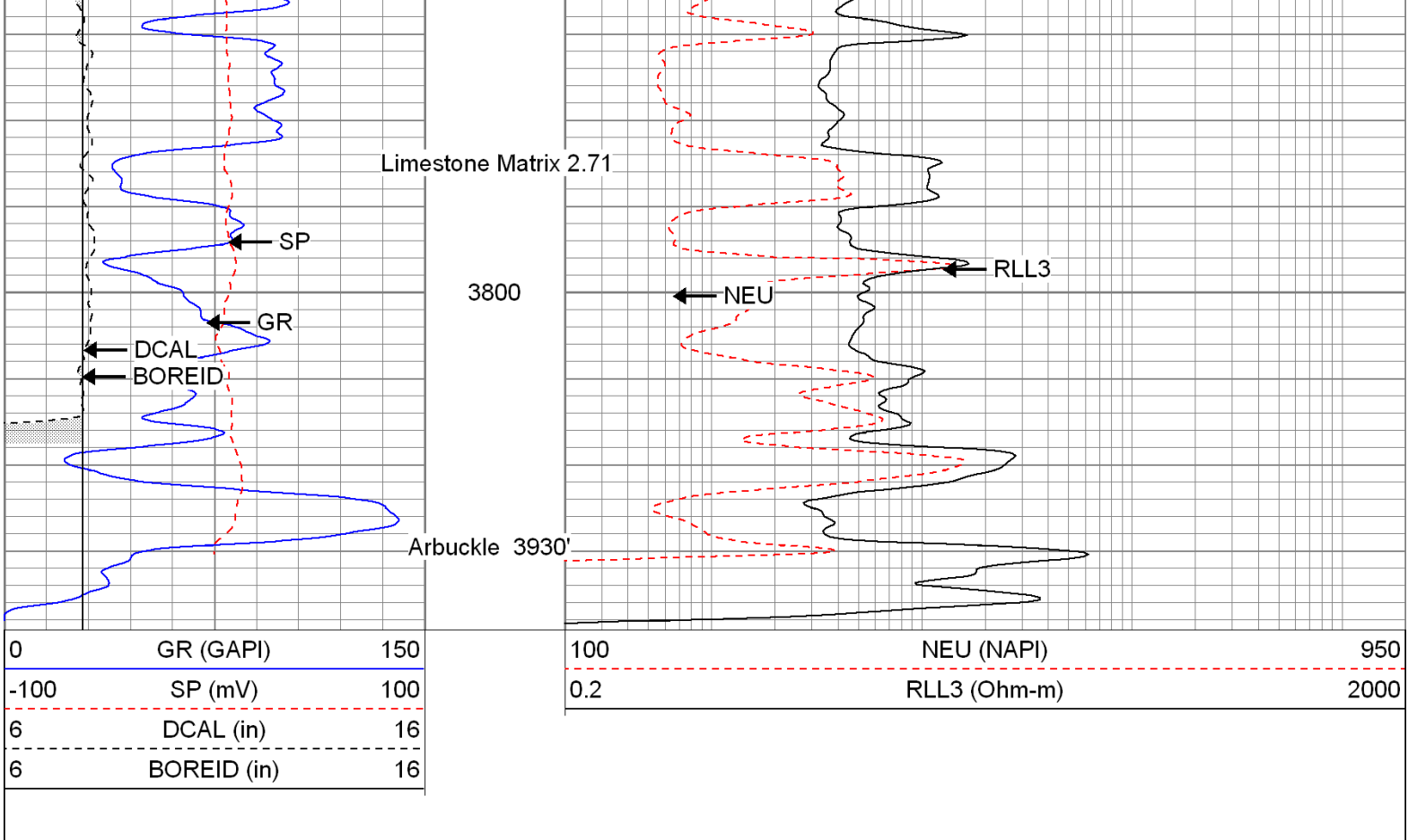
3600

3650

3700

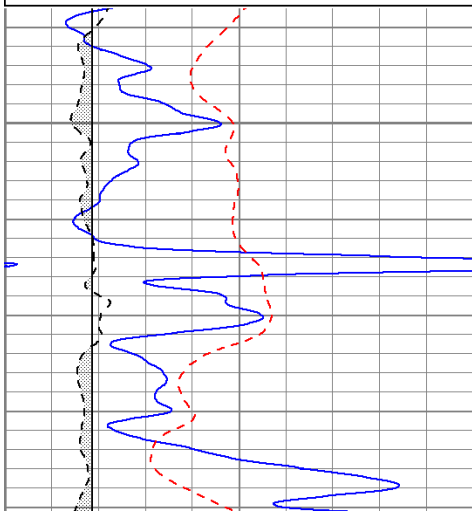
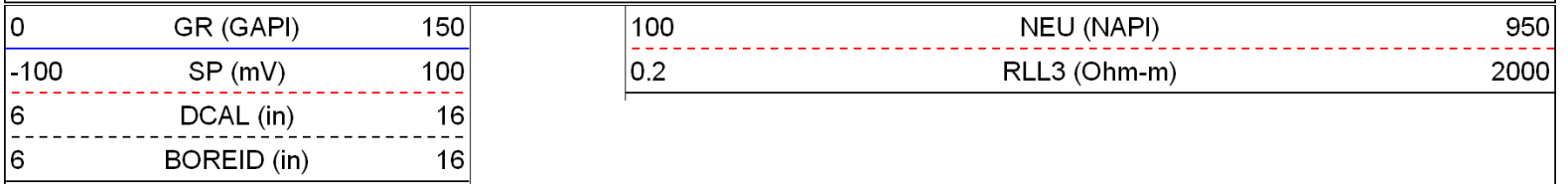
3750



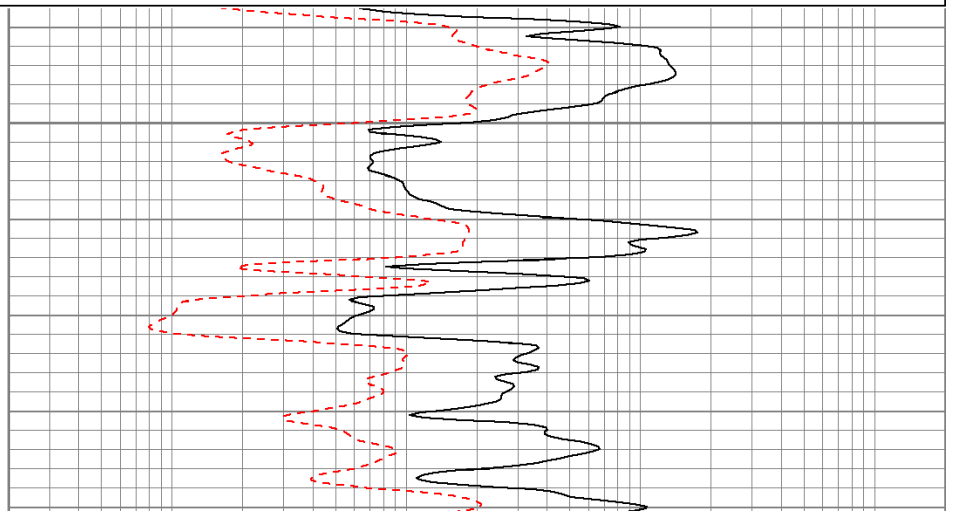


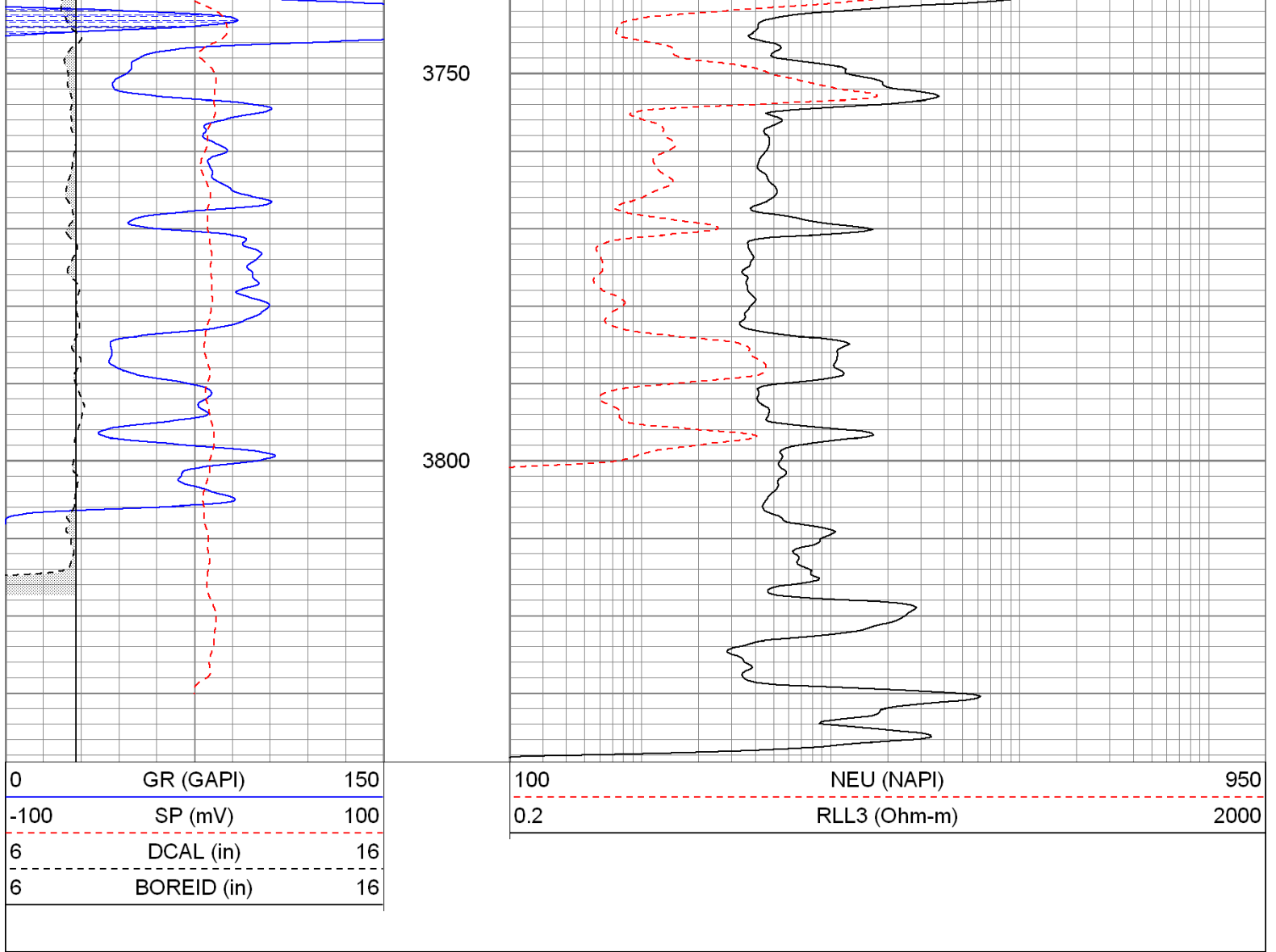
# Repeat Pass

Database File: roverawhite#9oh.db  
 Dataset Pathname: pass1.1  
 Presentation Format: krg  
 Dataset Creation: Fri Oct 21 23:45:01 2011 by Calc Open-Cased 100827  
 Charted by: Depth in Feet scaled 1:240



3700





### Calibration Report

Database File: roverawhite#9oh.db  
 Dataset Pathname: pass1  
 Dataset Creation: Fri Oct 21 22:56:32 2011 by Log Open-Cased 100827

### Dual Induction Calibration Report

Serial-Model: 5375-G  
 Surface Cal Performed: Thu Oct 20 12:47:11 2011  
 Downhole Cal Performed: Thu Oct 20 12:47:50 2011

#### Surface Calibration

Loop:	Readings				References		Results	
	Air	Loop			Air	Loop	m	b
Deep	0.002	0.640	V	0.000	350.000	mmho/m	548.515	-0.941
Medium	0.005	0.741	V	0.000	400.000	mmho/m	543.569	-2.777
Internal:	Zero	Cal		Zero	Cal		m	b
Deep	0.002	0.640	V	0.000	350.000	mmho/m	548.463	-1.028
Medium	0.005	0.742	V	0.000	550.000	mmho/m	746.572	-3.700

#### Downhole Calibration

Readings
References
Results

Internal:	Zero	Cal		Zero	Cal		m	b
Deep	0.298	349.896	mmho/m	0.087	350.121	mmho/m	1.001	-0.211
Medium	0.040	400.070	mmho/m	-0.083	400.365	mmho/m	1.001	-0.123
Shallow	2.471	0.009	V	500.000	2.000	Ohm-m	180.293	0.157

**Compensated Density Calibration Report**

Serial-Model: 2501DHT-DHT  
 Source / Verifier: /  
 Master Calibration Performed: Thu Oct 20 12:51:38 2011

**Master Calibration**

	Density		Far Detector	Near Detector	
Magnesium	1.750	g/cc	744.27	293.58	cps
Aluminum	2.680	g/cc	138.48	189.15	cps
Spine Angle = 75.35			Density/Spine Ratio = 0.535		
	Size		Reading		
Small Ring	7.80	in	6064.22		
Large Ring	14.00	in	10296.80		

**Gamma Ray Calibration Report**

Serial Number: 2000  
 Tool Model: P2000  
 Performed: Mon Sep 26 11:41:30 2011

Calibrator Value: 1.0 GAPI

Background Reading: 0.0 cps  
 Calibrator Reading: 1.0 cps

Sensitivity: 0.2200 GAPI/cps

**Neutron Calibration Report**

Serial Number: 5108  
 Tool Model: PROBE  
 Performed: Wed Oct 19 06:16:06 2011

Calibrator Value: 1 NAPI

Calibrator Reading: 1 cps

Sensitivity: 1 NAPI/cps

Sensor	Offset (ft)	Schematic	Description	Len (ft)	OD (in)	Wt (lb)
NEU	37.96		None	0.75	1.50	5.00
			NEU-PROBE (5108) Probe	4.92	3.63	85.00
GR	32.57		GR-P2000 (2000)	3.67	3.25	40.00
CDL	33.78		CDL-DHT (2501DHT) Digital High Temp CDL Tool	9.69	4.00	201.00

LSD	23.78						
DCAL	23.49						
SSD	23.24						
HEADVOLT	21.47						
CILD	10.60						
SP	10.60						
CILM	6.89						
RLL3	1.70						
				DIL-G (5375) Gearhart	21.47	4.00	345.00

Dataset:	roverawhite#9oh.db: field/well/run1/pass1
Total Length:	40.49 ft
Total Weight:	676.00 lb
O.D.	4.00 in