

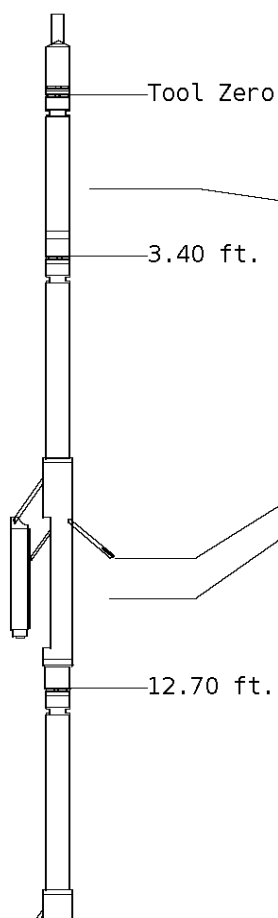
ALL PRESENTATIONS AS PER CUSTOMER REQUEST
 GRT, CNT, LDT, MLT AND PIT RUN IN COMBINATION
 CALIPERS ORIENTED ON X-Y AXIS
 2.71 G/CC USED TO CALCULATE POROSITY
 ANNULAR HOLE VOLUME CALCULATED USING 5.5" PRODUCTION CASING
 PHIN IS CALIPER CORRECTED

GRT: GRP
 CNT: PHIN, CLCNIN
 LDT: PORL, LCORN, PECLN, LDENN, PORLLS, CLLDIN
 MLT: NOR_RF, INV_RF, MSCLPIN
 PIT: ILD, ILM, SPU, SFLAEC, CIRD

OPERATORS:
 B. BROWN
 D. DUNCAN

Tool String Schematic

Total Tool Length - 53.15 ft.
Maximum Outside diameter - 6.00 in.
Net Weight in Air - 943.00 lbs.



Tool: GRT-B		Length: 3.40 ft.	O.D.: 3.60 in.
Gamma Ray Controller			
Sonde ID :GRT-BB-006			
Measure Point	Tool Offset	Stack Offset	Bottom Offset
GRP	2.00	2.00	51.15
Tool: CNT-AA		Length: 9.30 ft.	O.D.: 4.36 in.
Compensated Neutron A Pad on NDT-A			
Sonde ID :NDT-BB-033			
Source ID :N-1044			
Pad ID :CNP-AA-101			
Measure Point	Tool Offset	Stack Offset	Bottom Offset
CLCN	6.00	9.40	43.75
PHIN	6.80	10.20	42.95
Tool: LDT-DA		Length: 9.30 ft.	O.D.: 4.80 in.
Litho Density D Pad on NDT-A			
Sonde ID :NDT-CA-137			
Source ID :CSV-587			
Pad ID :LDP-DA-02			
Measure Point	Tool Offset	Stack Offset	Bottom Offset
CLLD	6.00	18.70	34.45
PEL	7.00	19.70	33.45
PES	7.40	20.10	33.05



7.20	19.90	33.25
7.20	19.90	33.25

Tool: MST-DA **Length:** 9.66 ft. **O.D.** 6.00 in.
 Micro Spherically Focused (IC)
Sonde ID :MLT-DA-21

Measure Point	Tool Offset	Stack Offset	Bottom Offset
MSFL	7.60	29.60	23.55
MSCLP	7.60	29.60	23.55
INV	7.60	29.60	23.55
NOR	7.60	29.60	23.55

Tool: PIT-CA **Length:** 21.49 ft. **O.D.** 3.62 in.
 Phased Dual Induction w/ RM & D
Sonde ID :PIT-CA-062

Measure Point	Tool Offset	Stack Offset	Bottom Offset
ILD	8.92	40.58	12.56
ILM	10.10	41.76	11.39
SFLU	17.49	49.15	4.00
SP	20.60	52.26	0.88

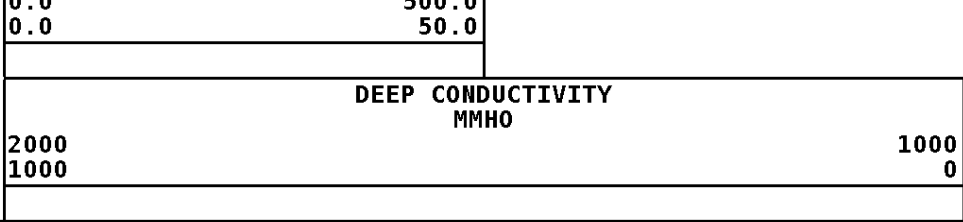
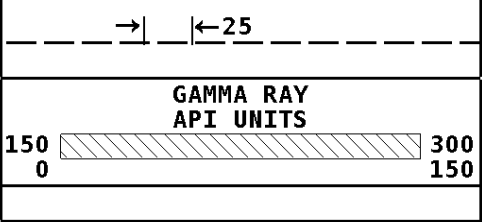
Well File: NOBLE BUENITZ 1 SEP11_MSTK **Scale:** 1:600 **Format:** DIL-600
Segment: V1.D1.S7 FINAL MAIN **Acquired:** 2014-09/11 04:29 3.4.0-13115
Reference: 0 **Processed:** 2014-09/11 06:20 3.4.0-13115

TENSION LBS	0
10000	0

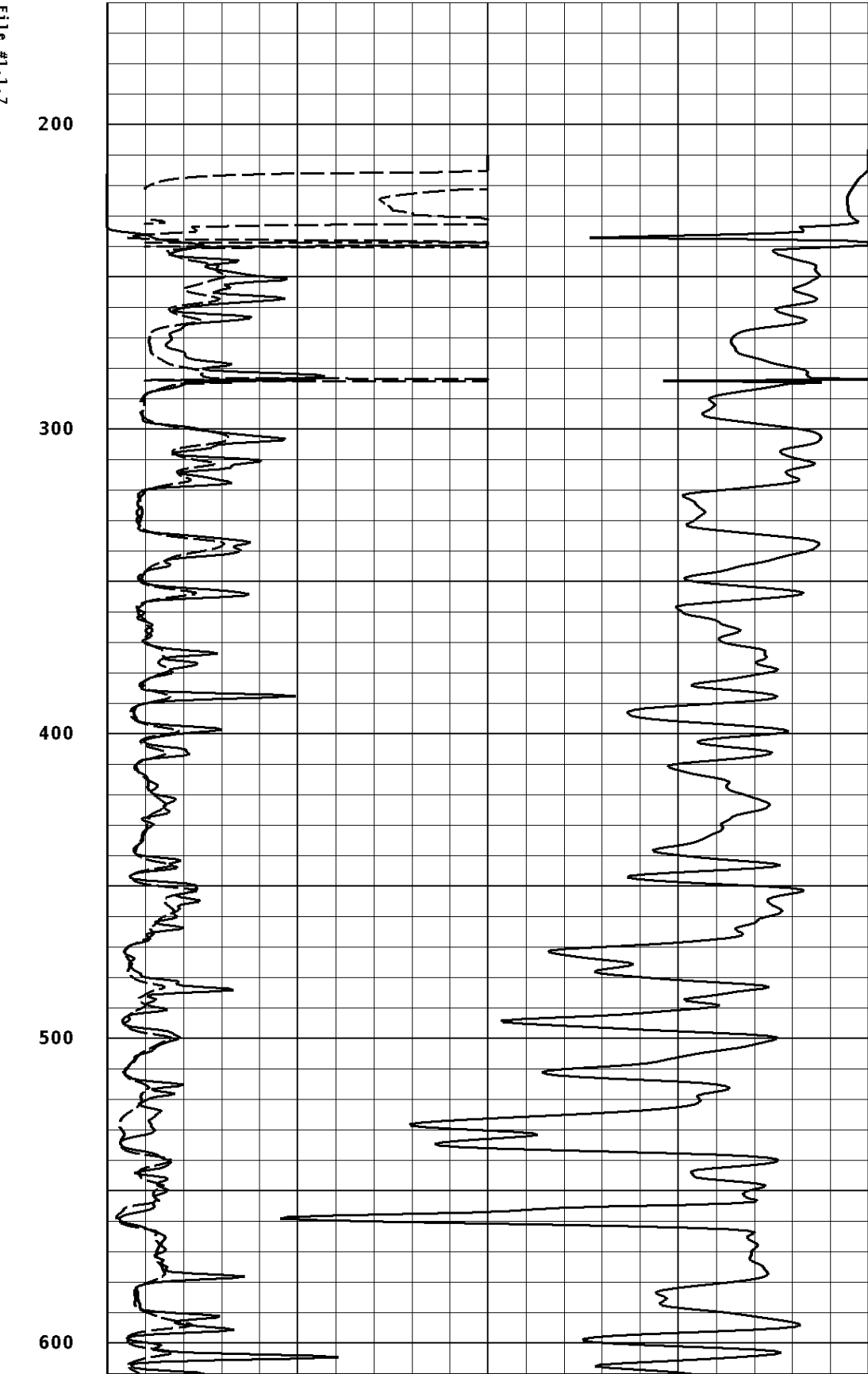
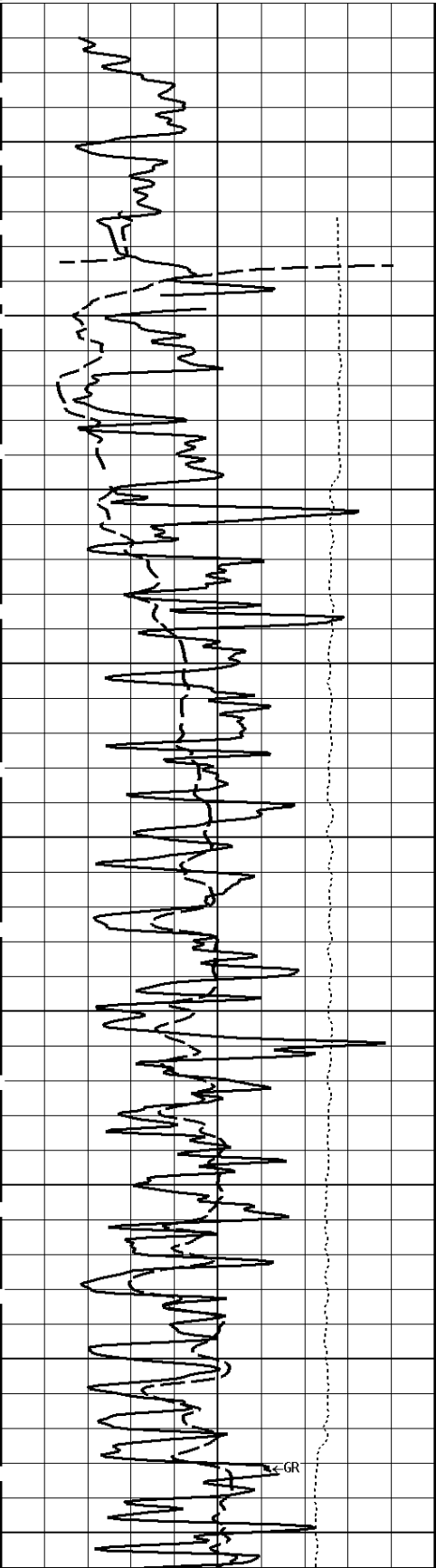
DEEP INDUCTION OHMM	500.0
0.0	50.0
0.0	50.0

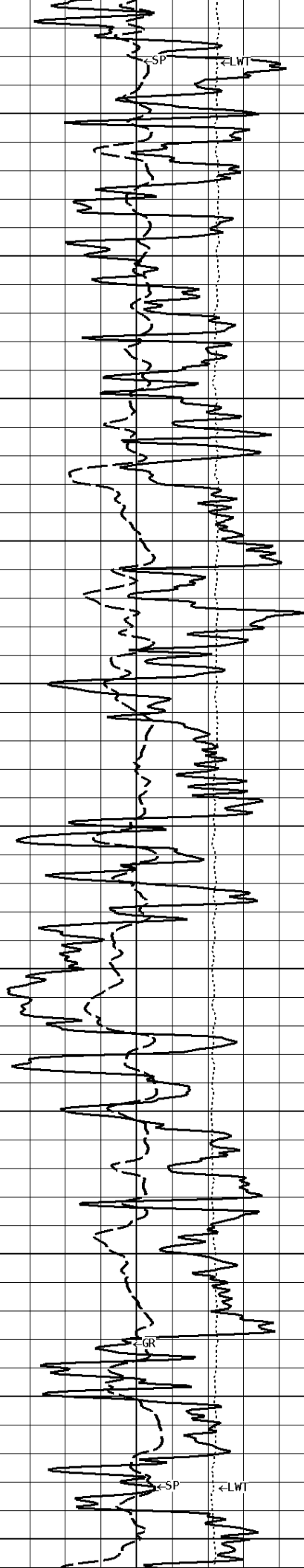
SPONTANEOUS POTENTIAL mV	
------------------------------------	--

SHALLOW FOCUSED RESISTIVITY OHMM	500.0
0.0	500.0

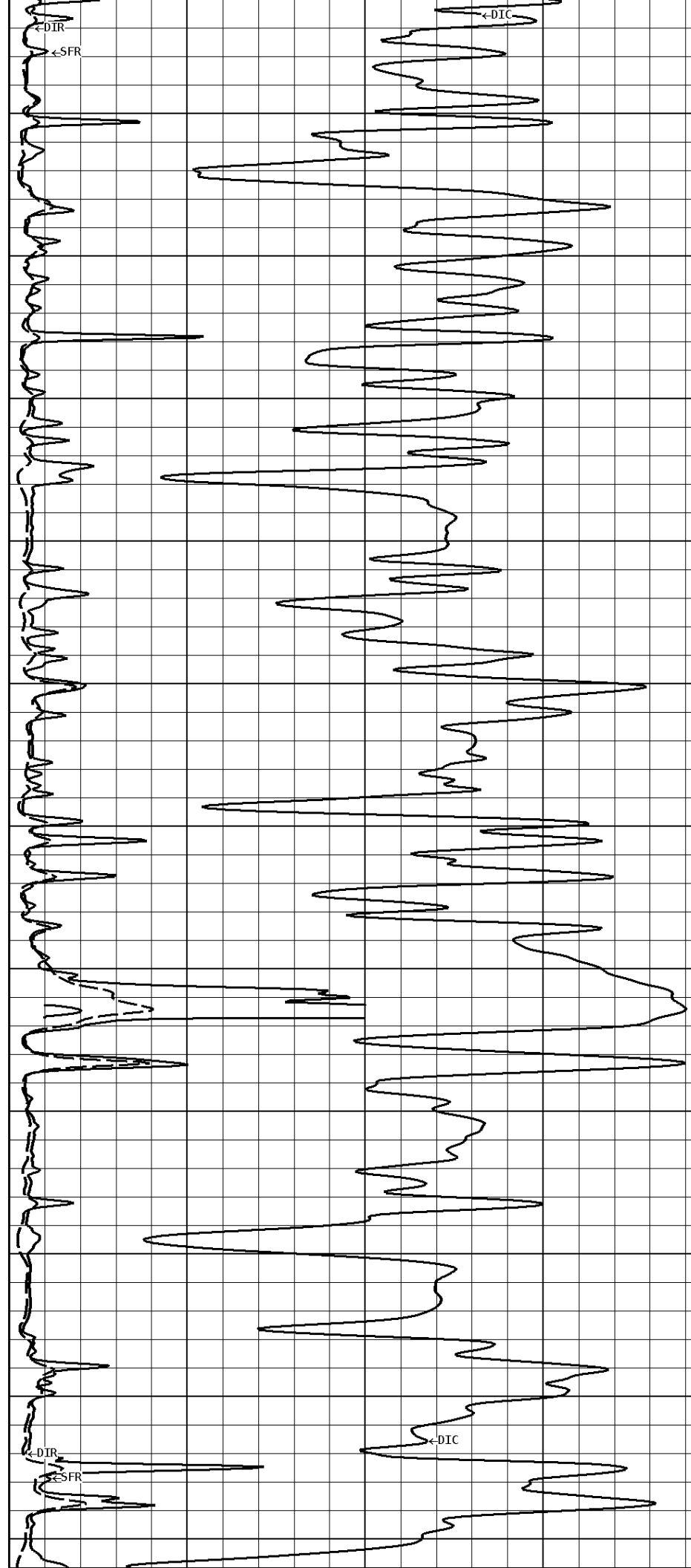


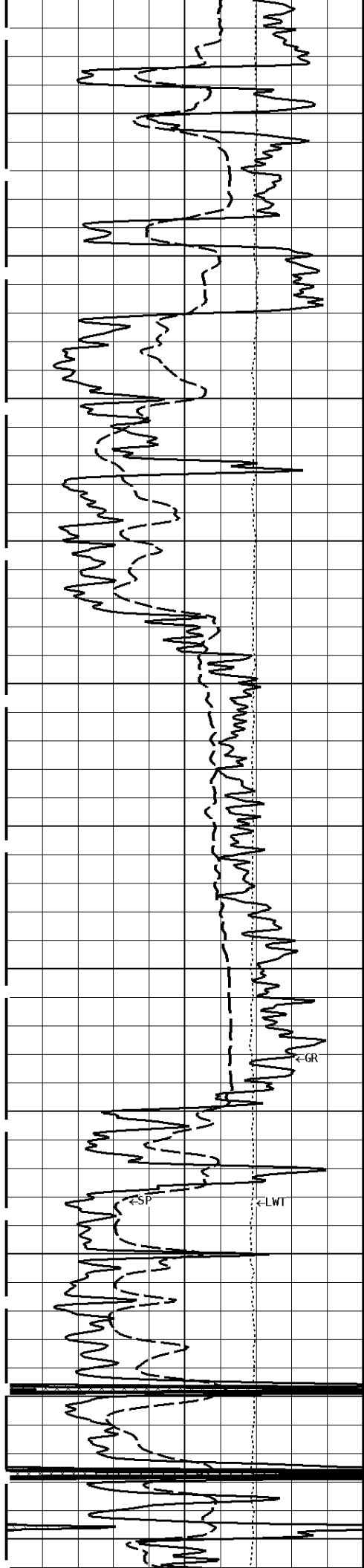
1:600 MAIN SECTION





700
800
900
1000
1100





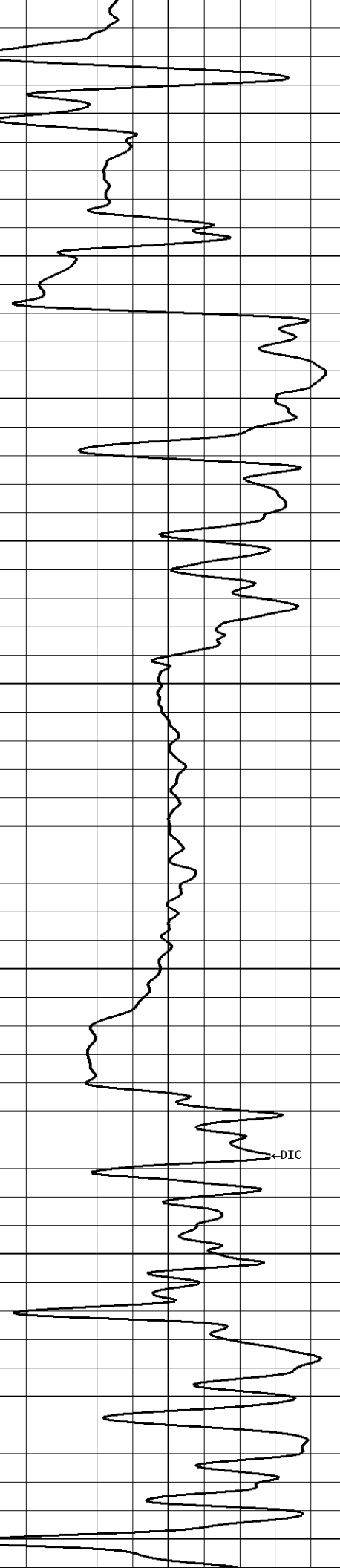
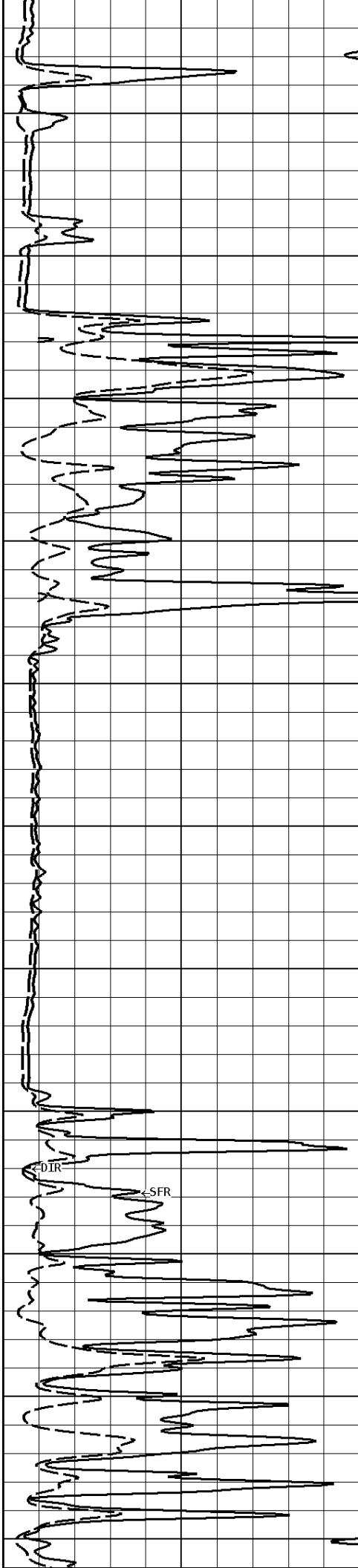
1800

1900

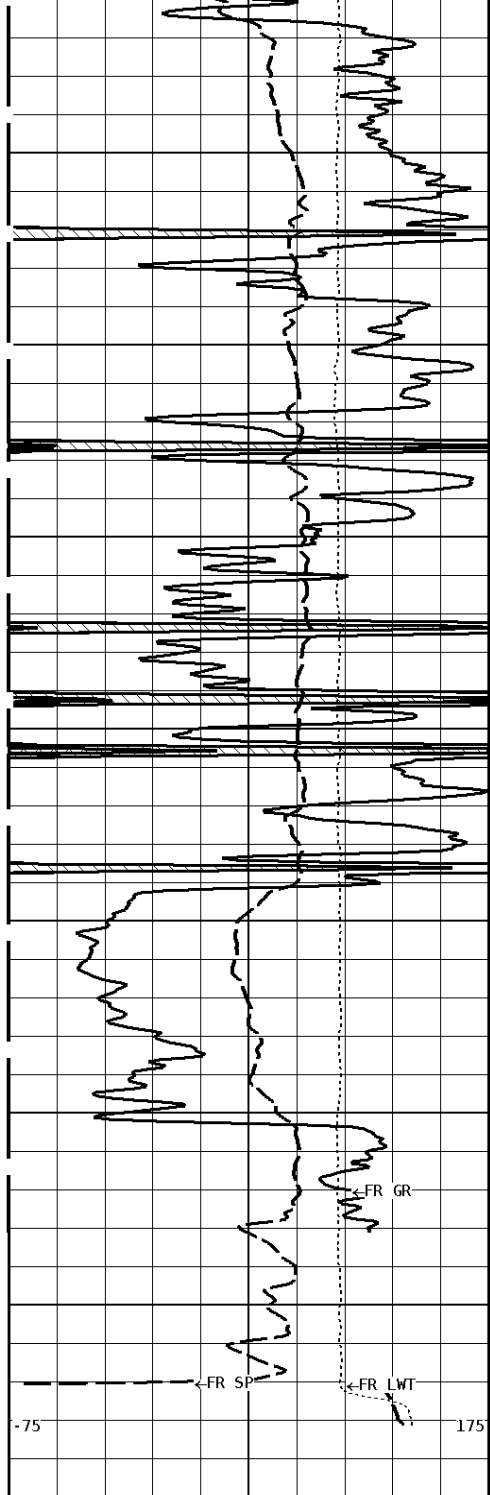
2000

2100

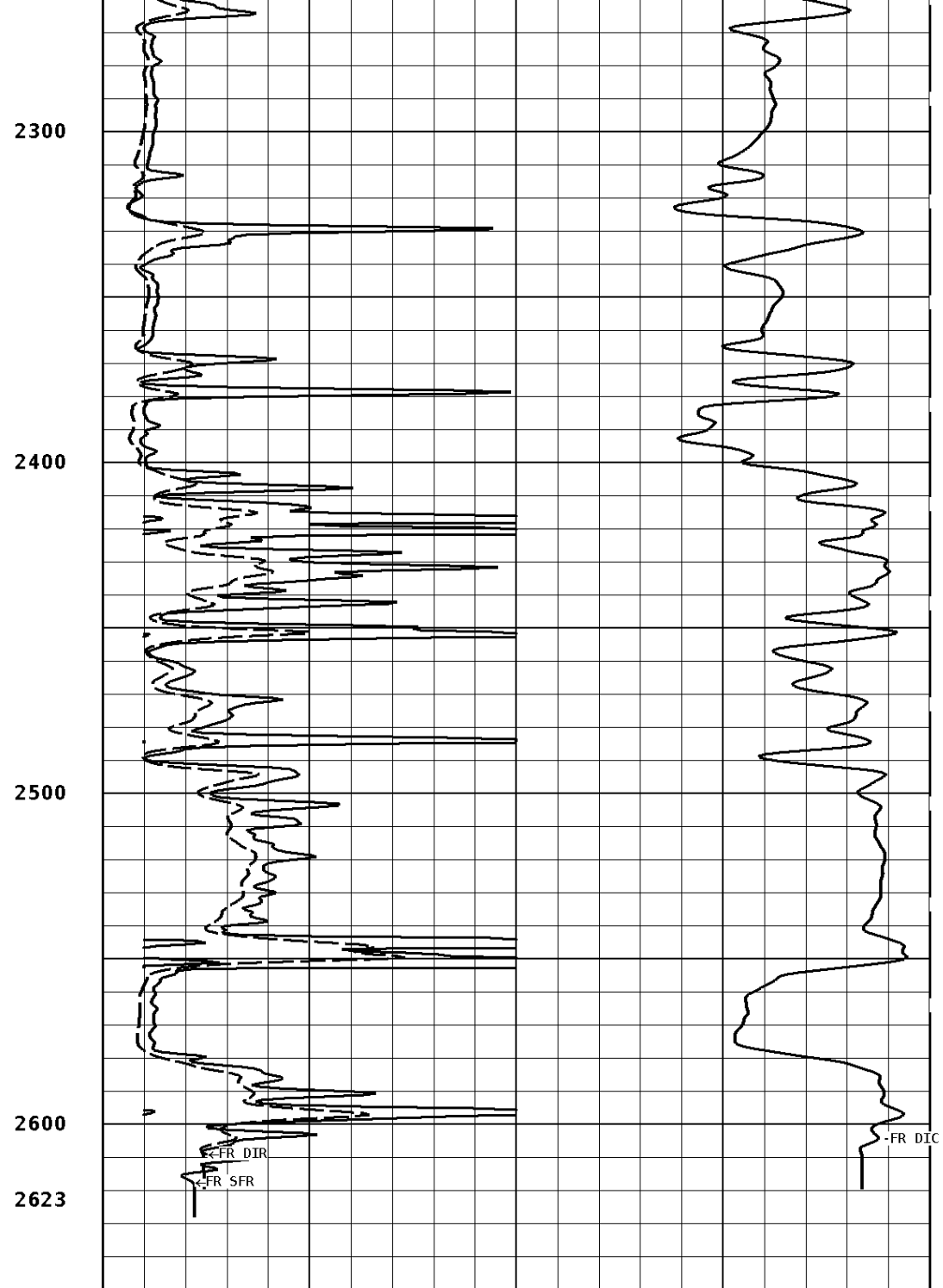
2200



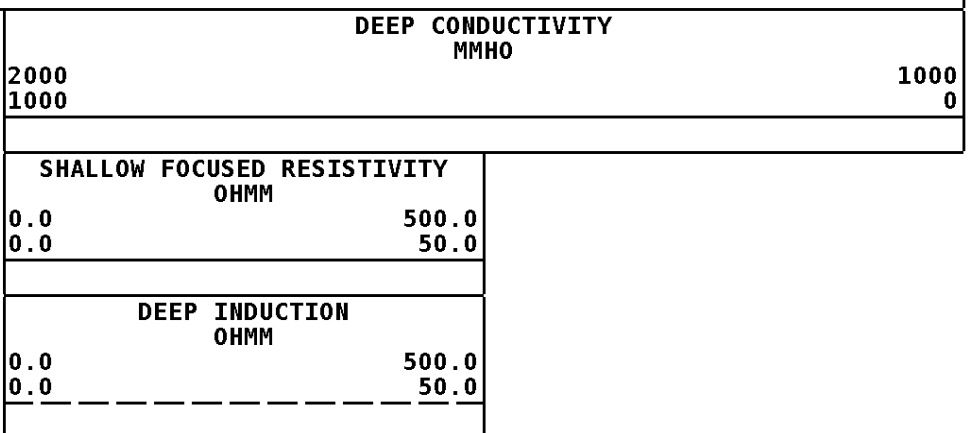
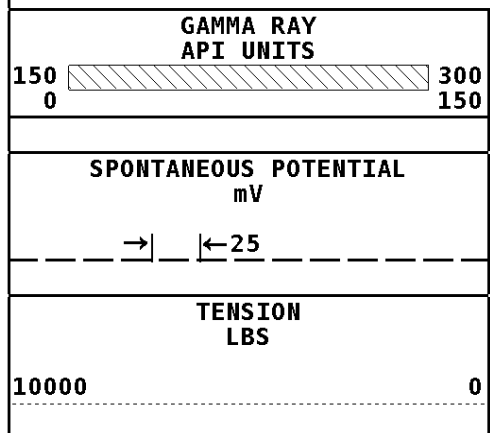
DIC

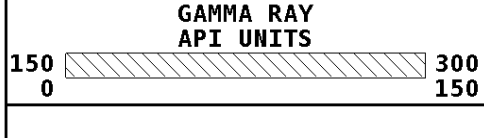
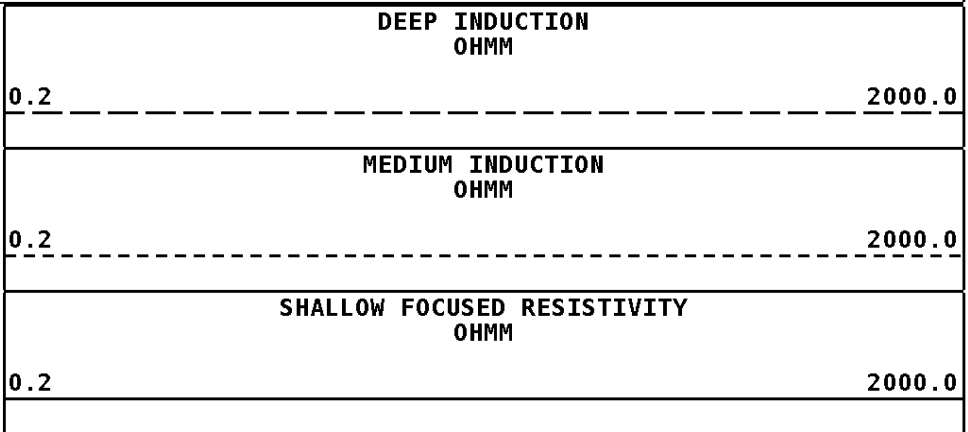
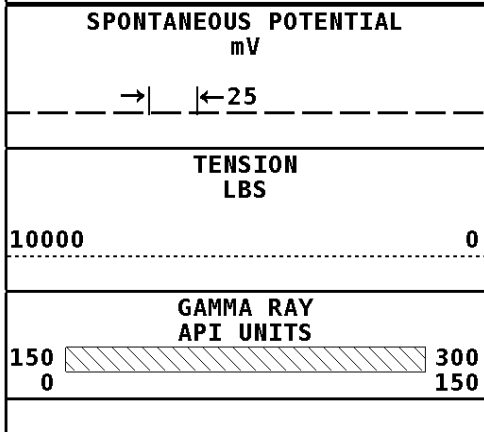


File #1.1.7

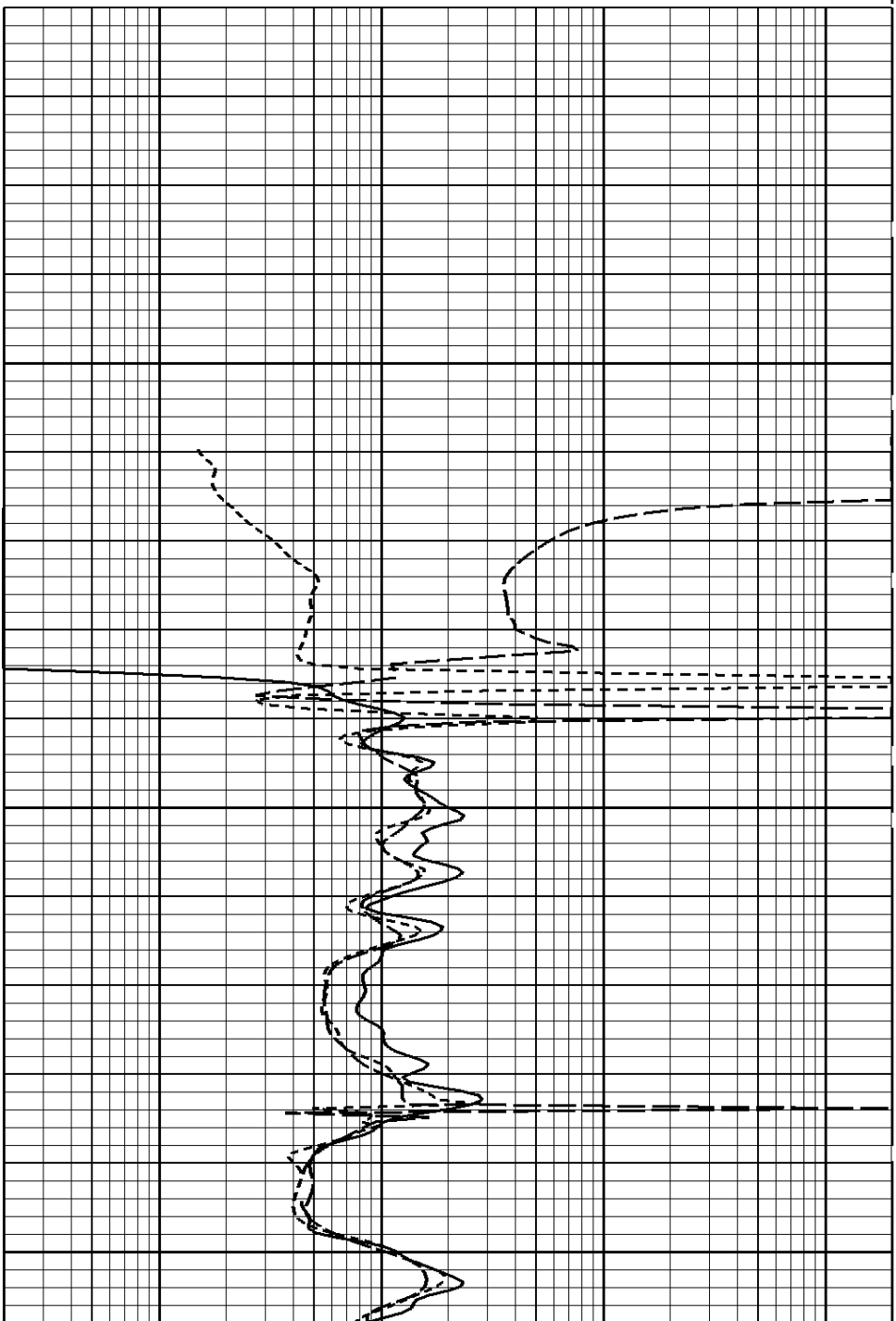


1:600 MAIN SECTION





1:240 MAIN SECTION



200

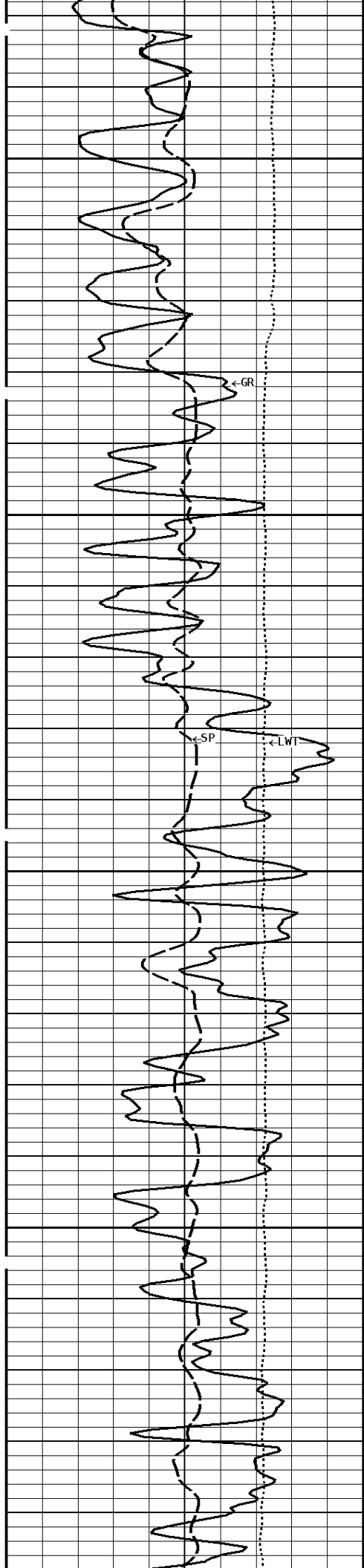
300



400

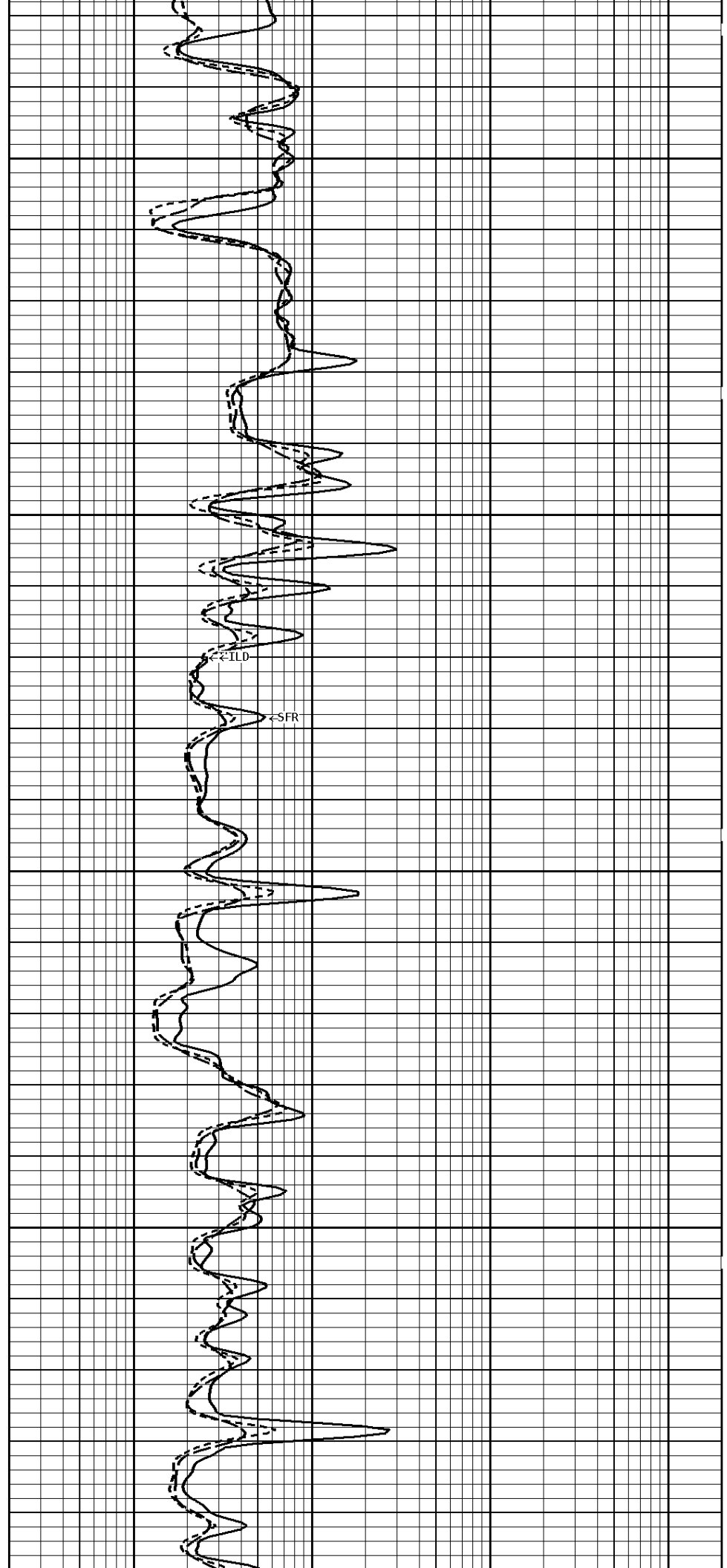


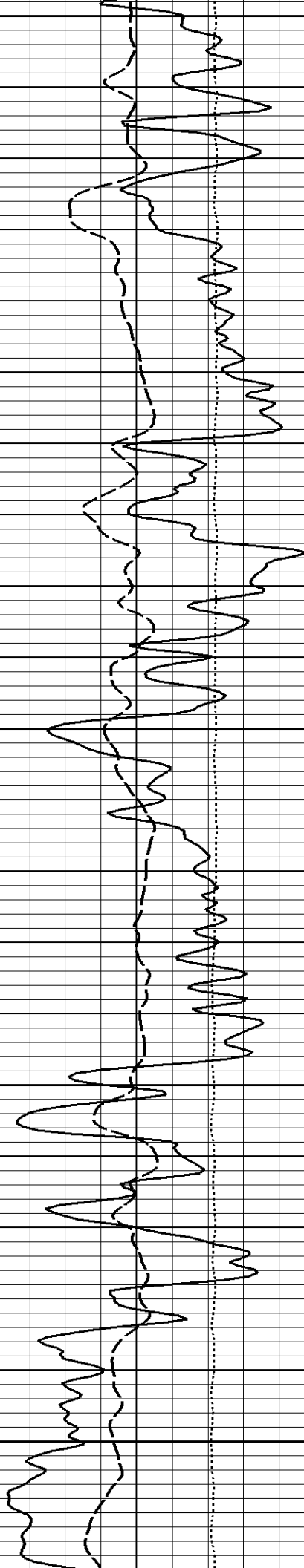
500



600

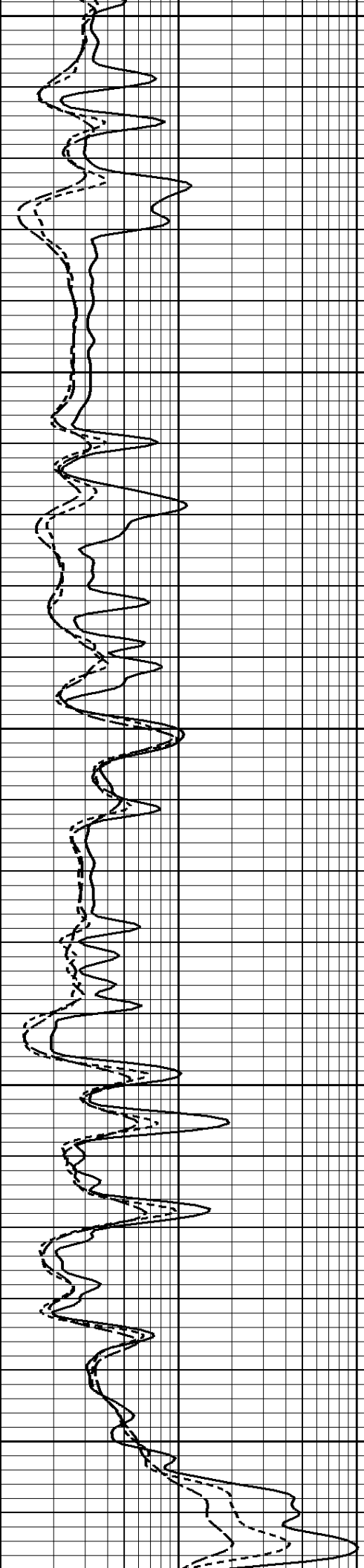
700

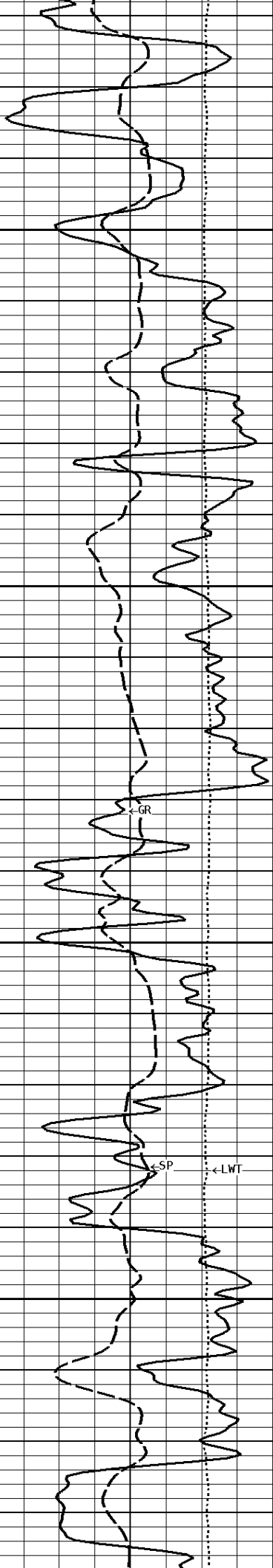




800

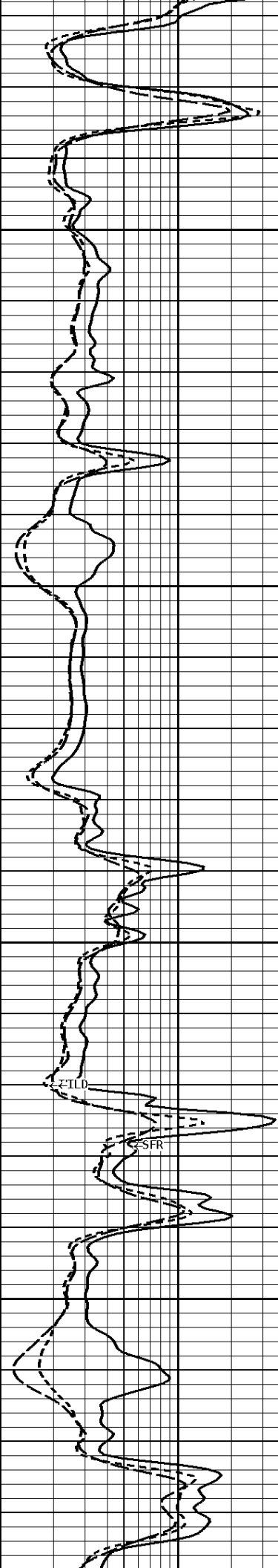
900

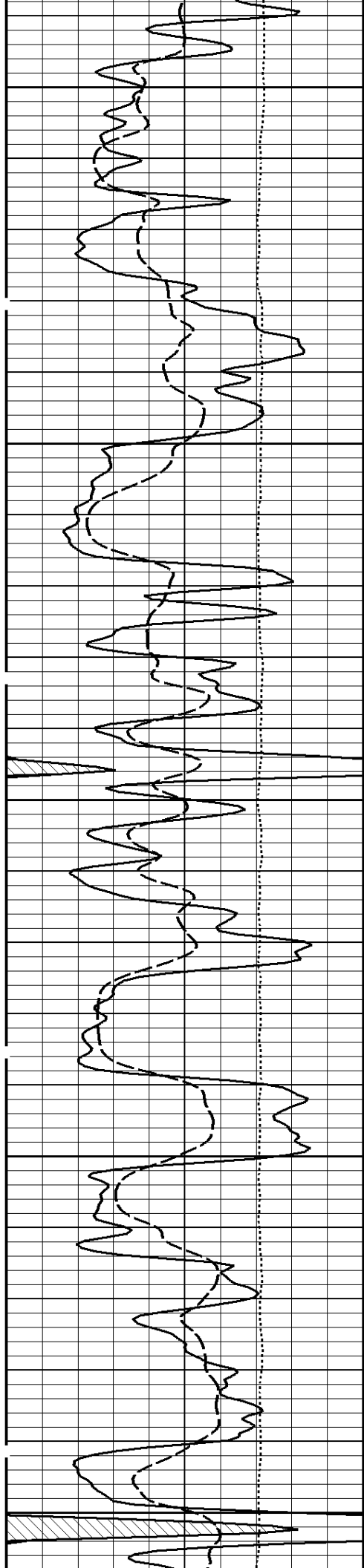




1000

1100

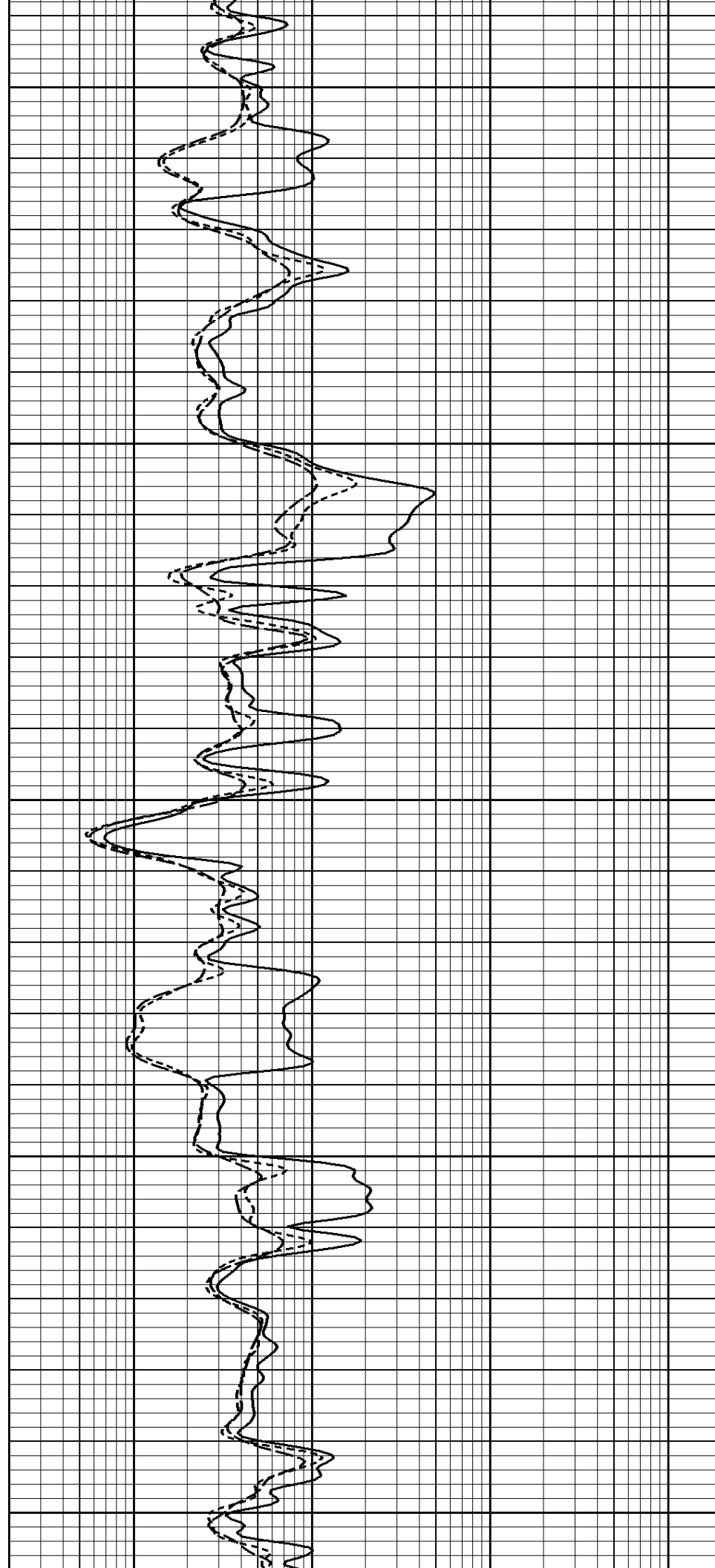


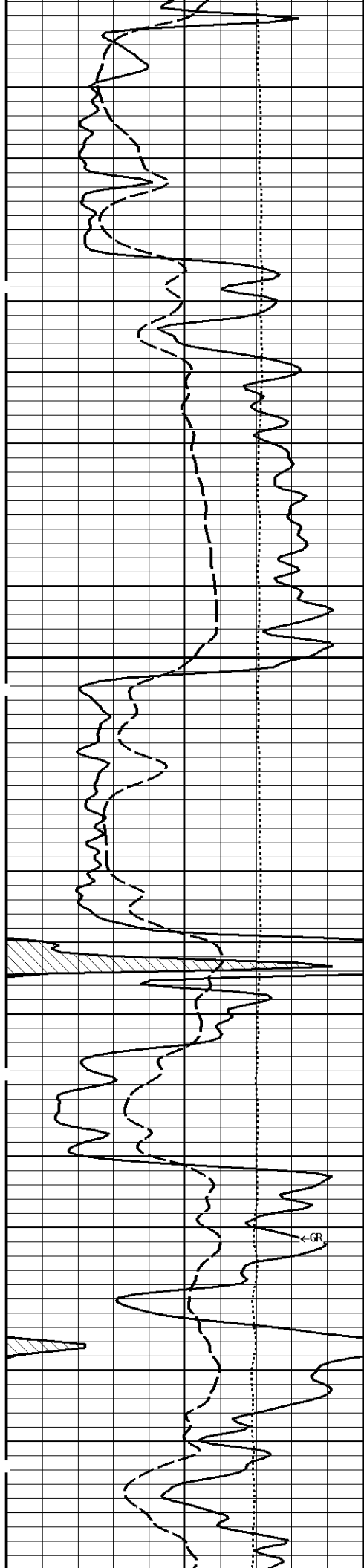


1200

1300

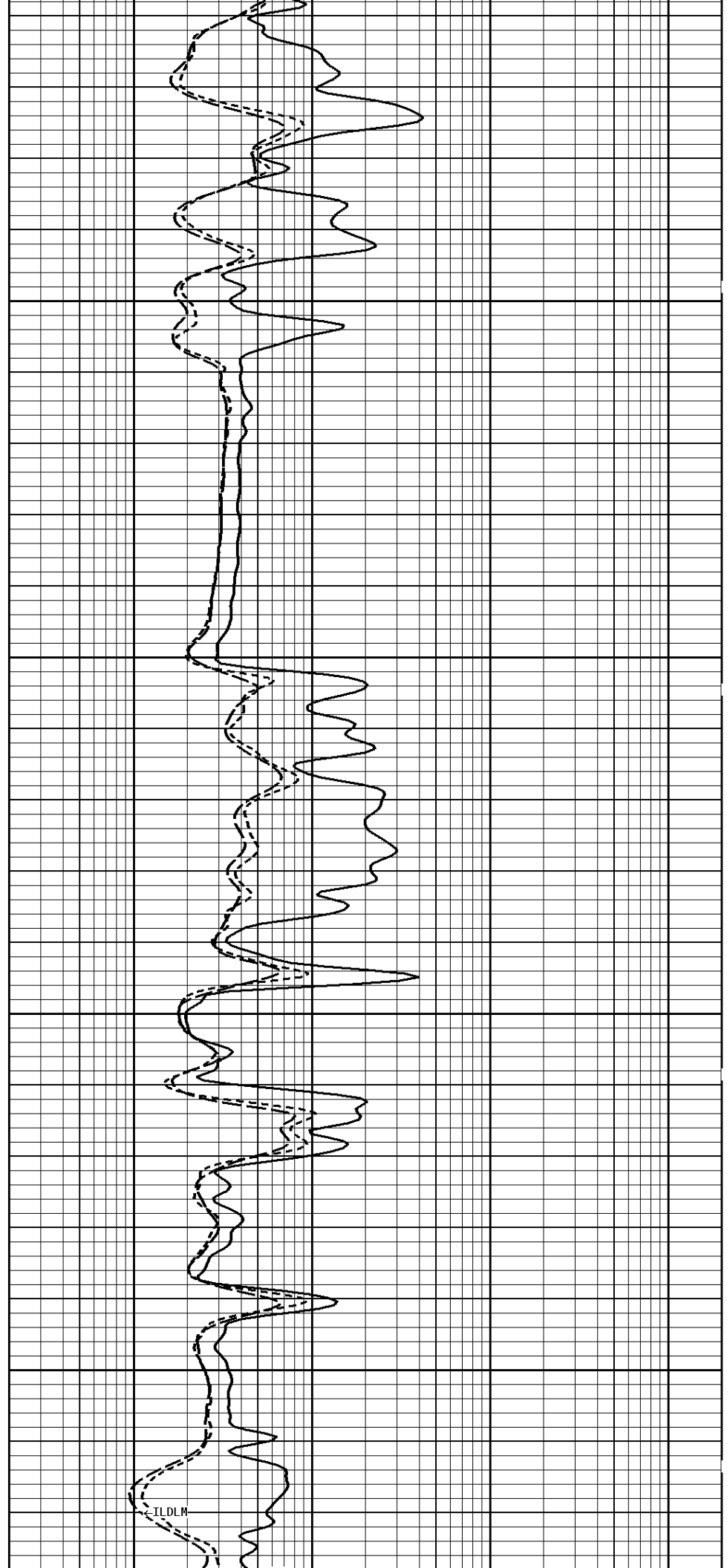
1400



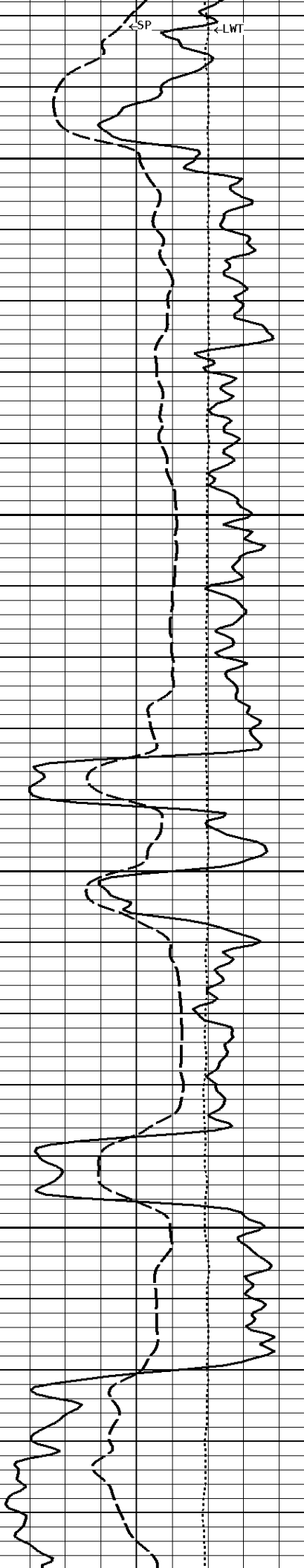


1500

1600

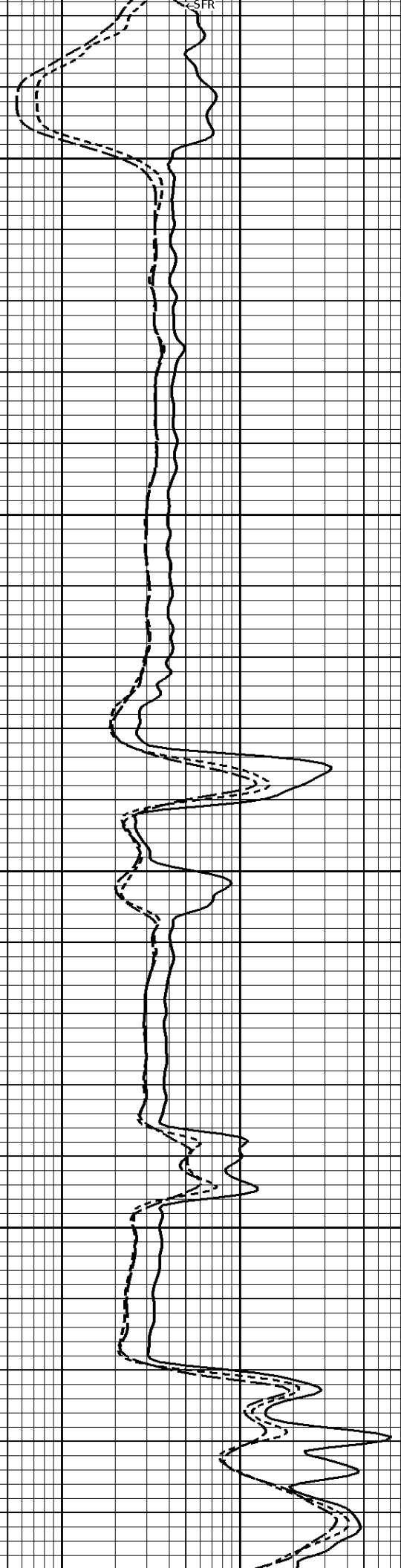


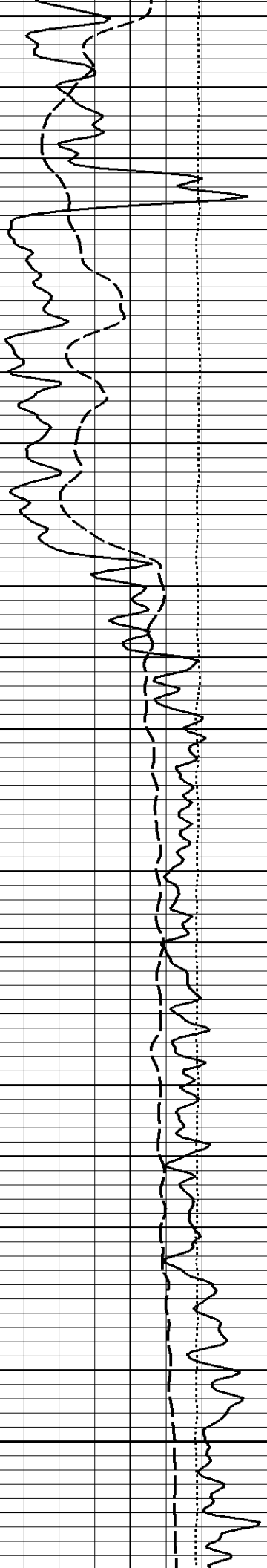
L D L M



1700

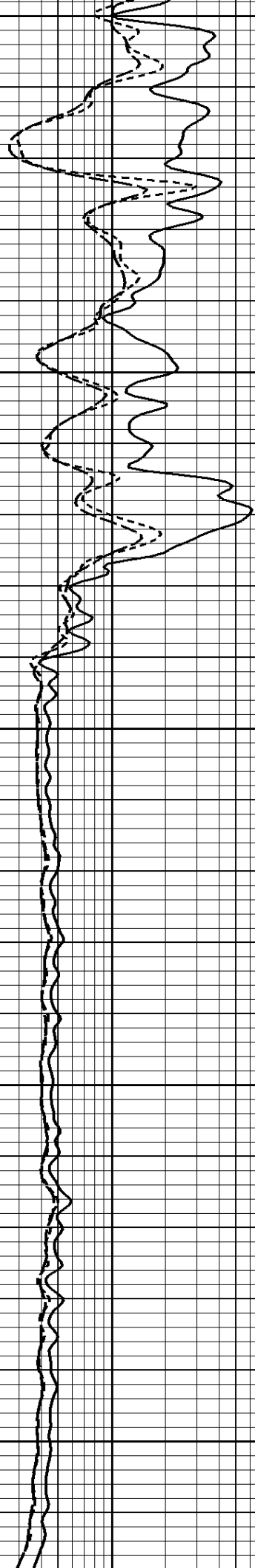
1800

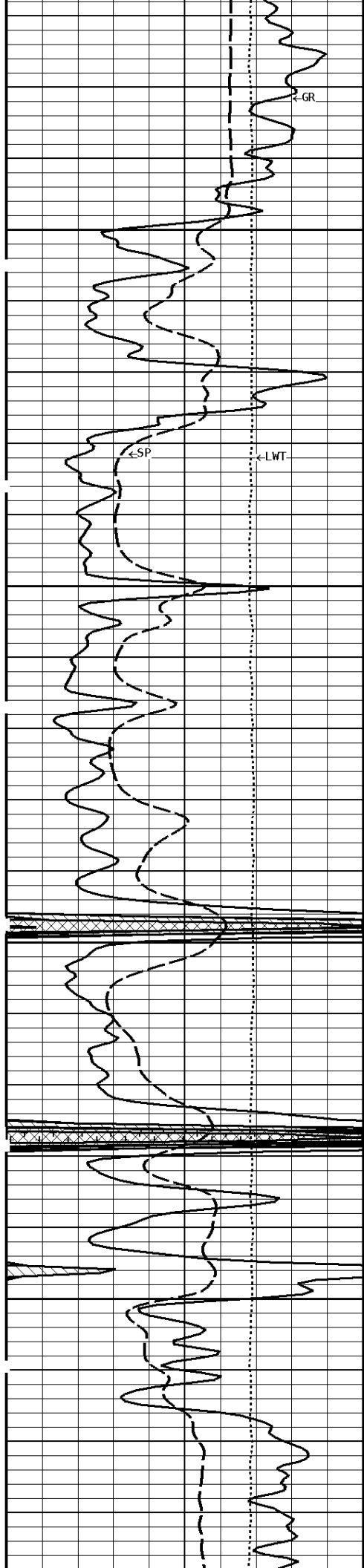




1900

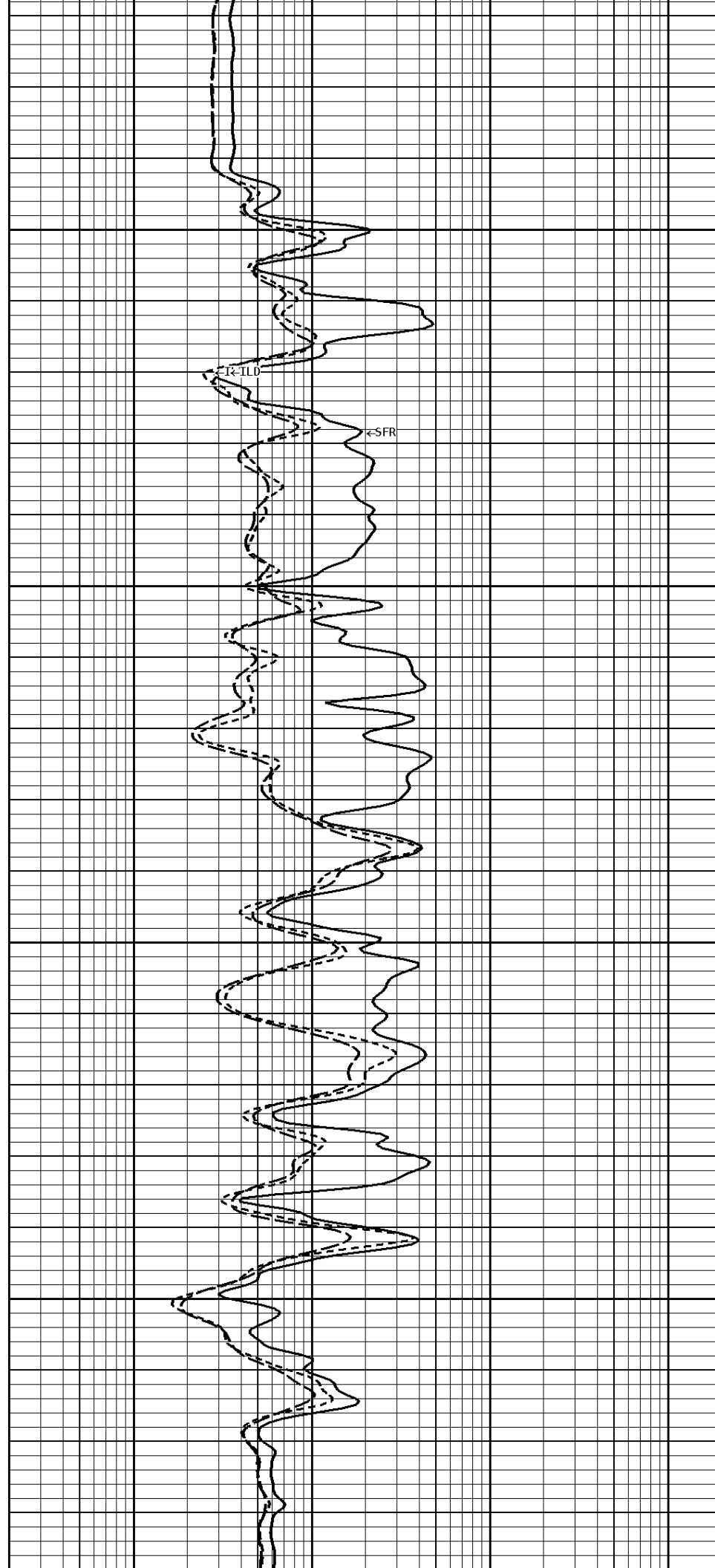
2000

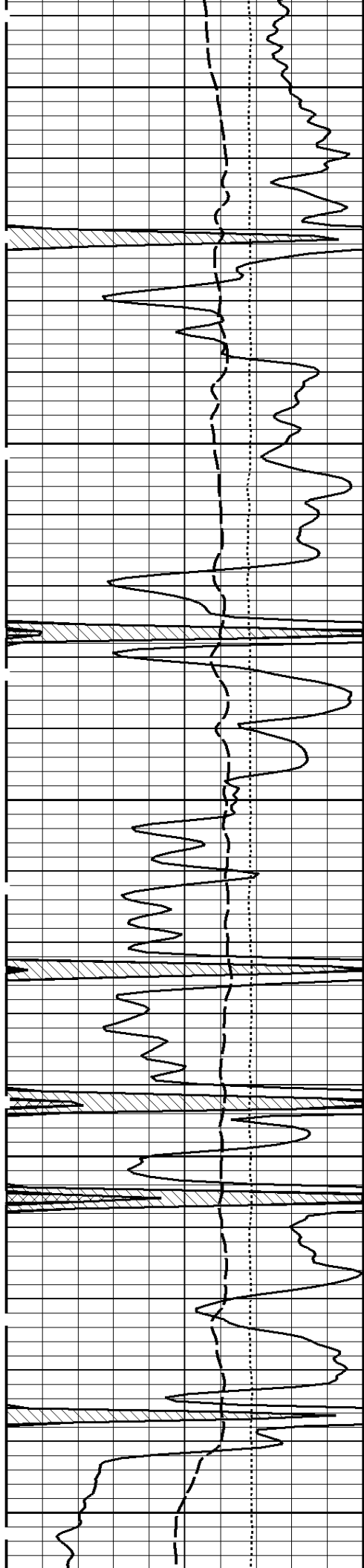




2100

2200

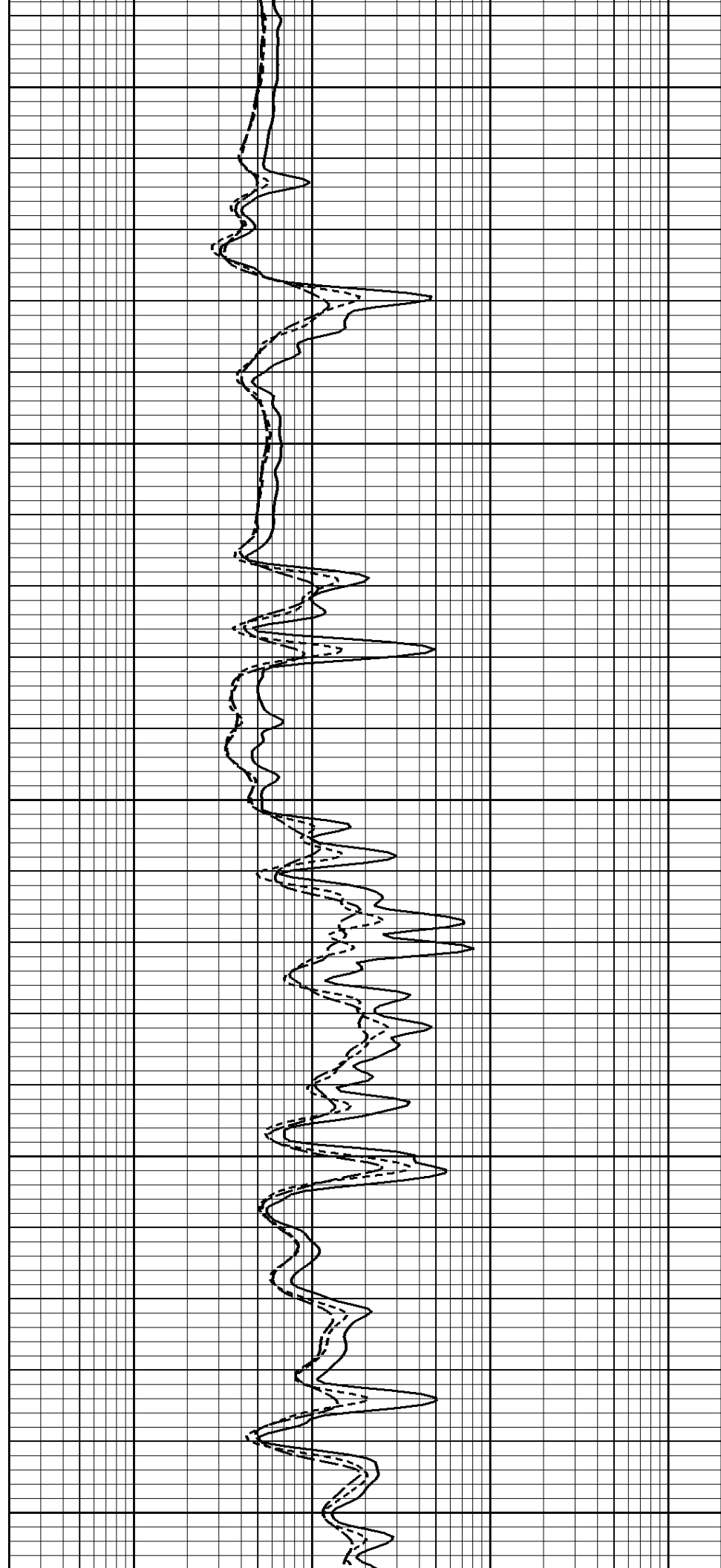


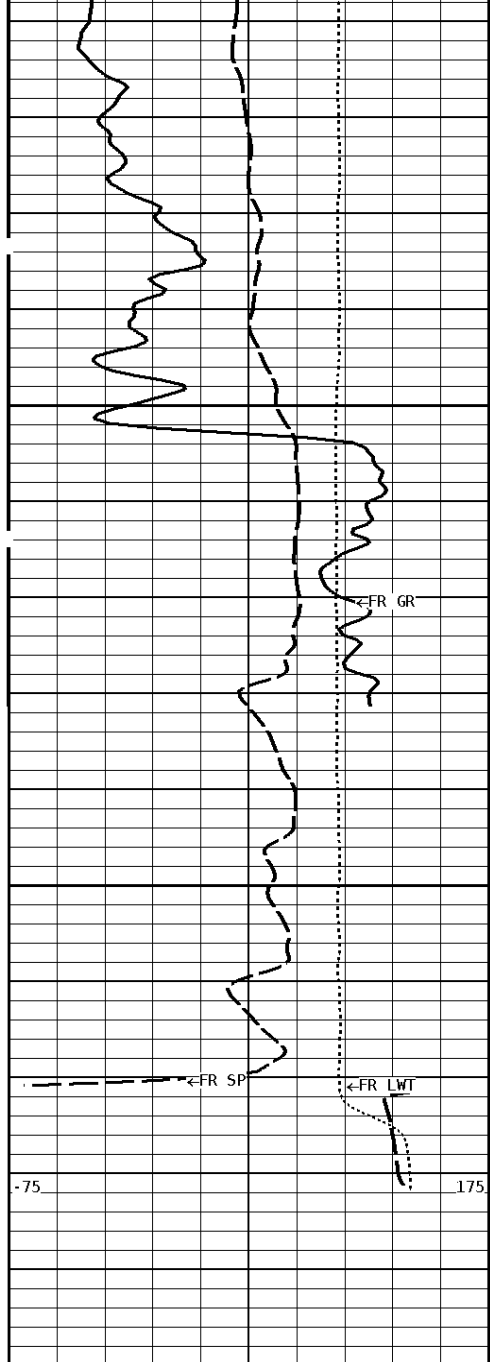


2300

2400

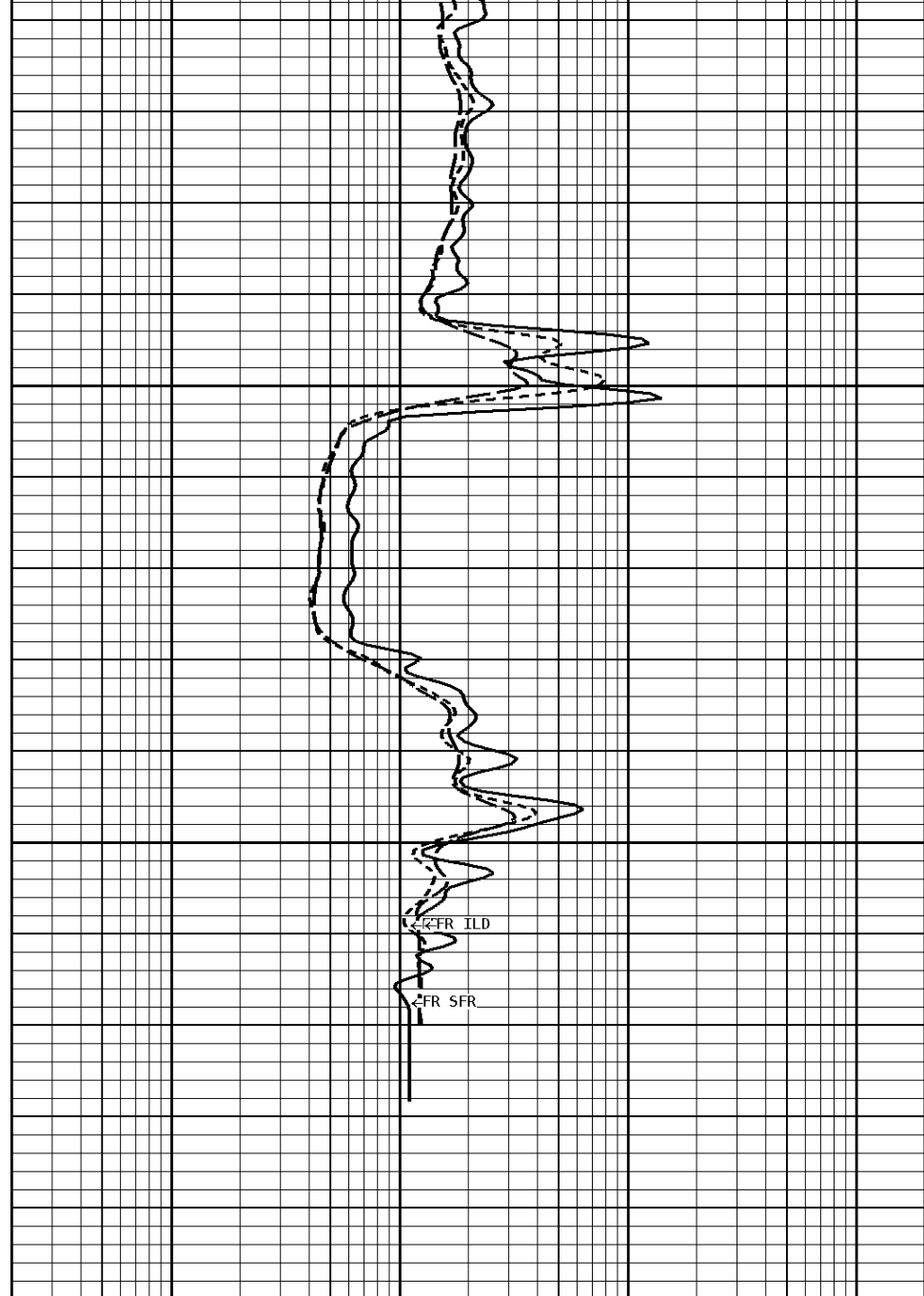
2500





2600

2623



1:240 MAIN SECTION

GAMMA RAY API UNITS	
150 0	300 150
TENSION LBS	
10000	0
SPONTANEOUS POTENTIAL mV	
→	← 25

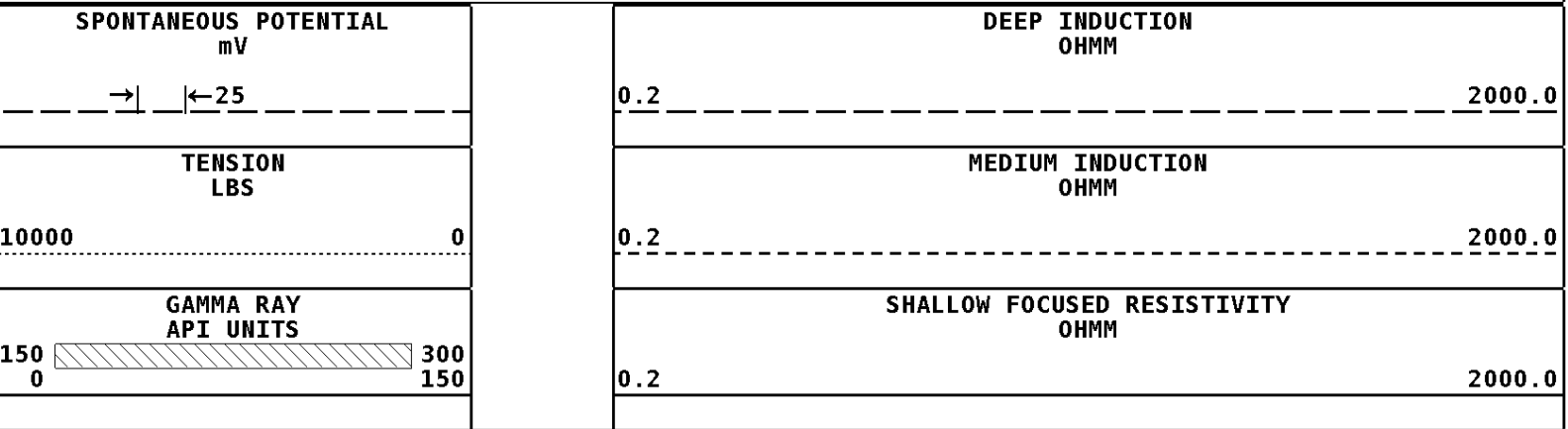
SHALLOW FOCUSED RESISTIVITY OHMM	
0.2	2000.0
MEDIUM INDUCTION OHMM	
0.2	2000.0
DEEP INDUCTION OHMM	
0.2	2000.0

*** Borehole Zone Factors ***

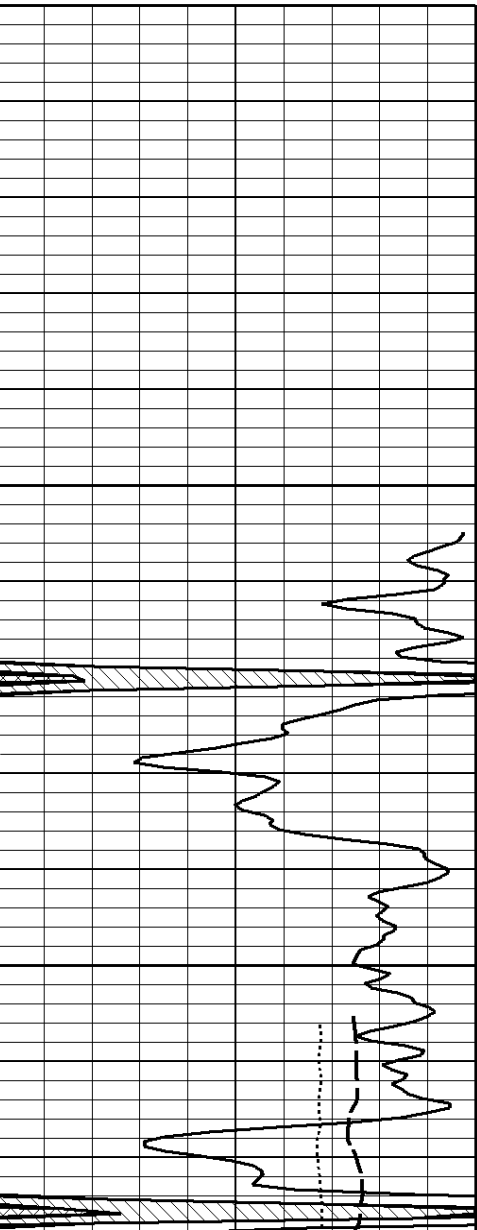
Zone 1	99999.0 to	0.0 Feet
Drill Bit Size	7.875 in	

Casing Diameter	5.500	in
BHT Depth	2623.000	ft
Borehole Temperature	115.0	degF
Temperature Gradient	1.00	DFHF
Resistivity Of Mud	0.800	ohm/m
Resistivity Of Mud Temperature	70.00	degF

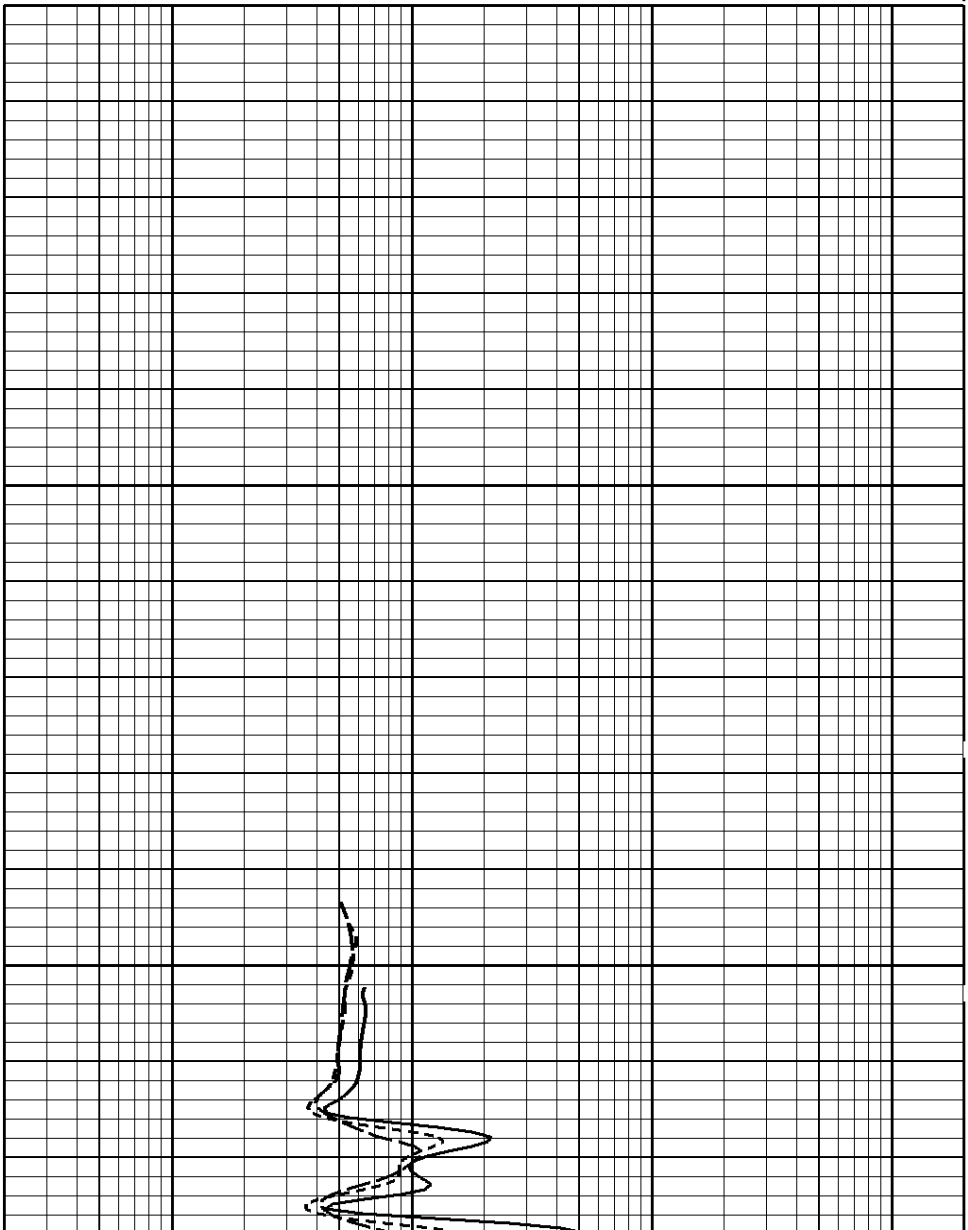
Well File: NOBLE_BUSENITZ_1_SEP11_MSTK Scale: 1:240 Format: DIL-240
Segment: V1.D1.S3_FINAL_REPEAT Acquired: 2014-09/11 04:08 3.4.0-13115
Reference: 0 Processed: 2014-09/11 06:20 3.4.0-13115

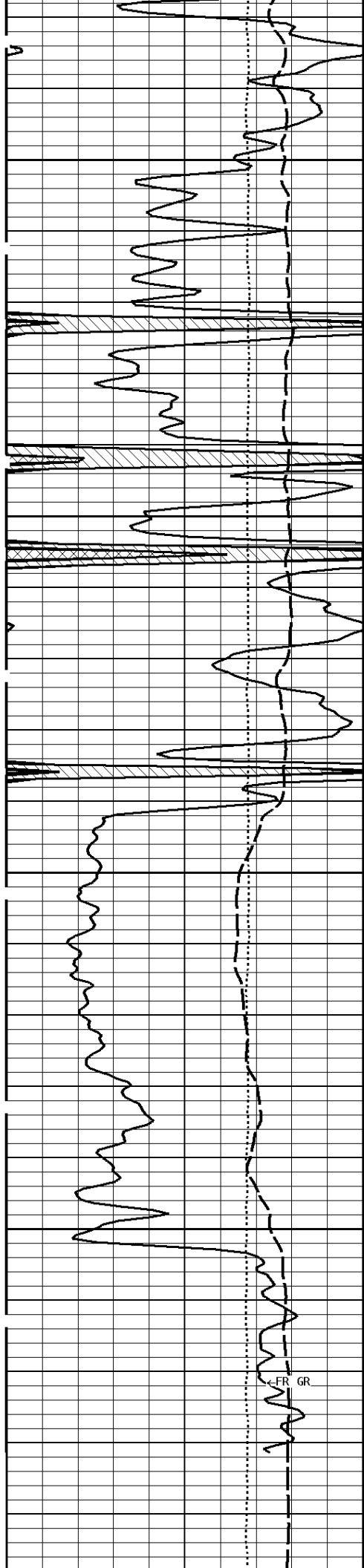


1:240 REPEAT SECTION



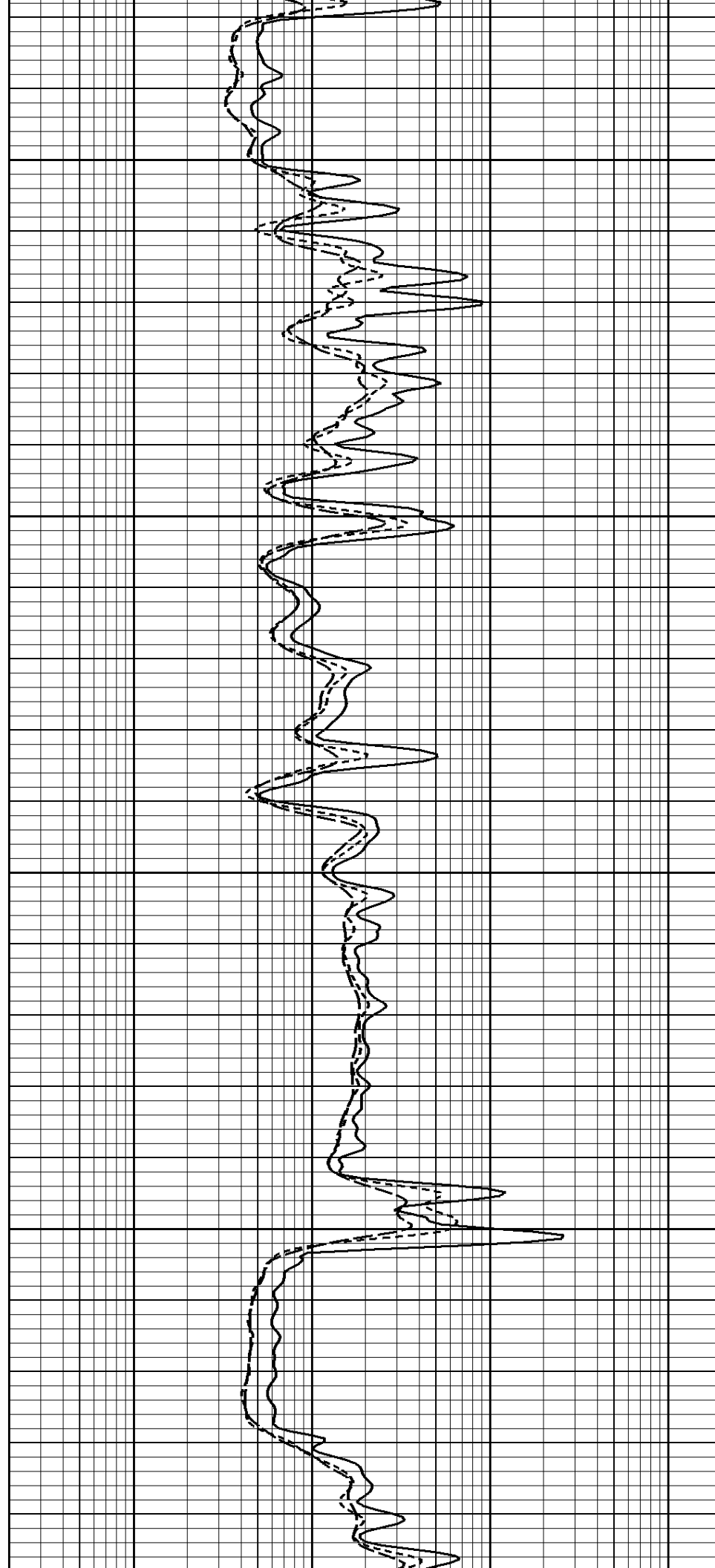
2300

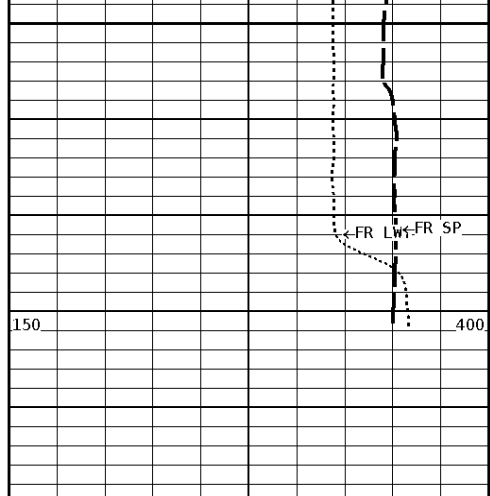




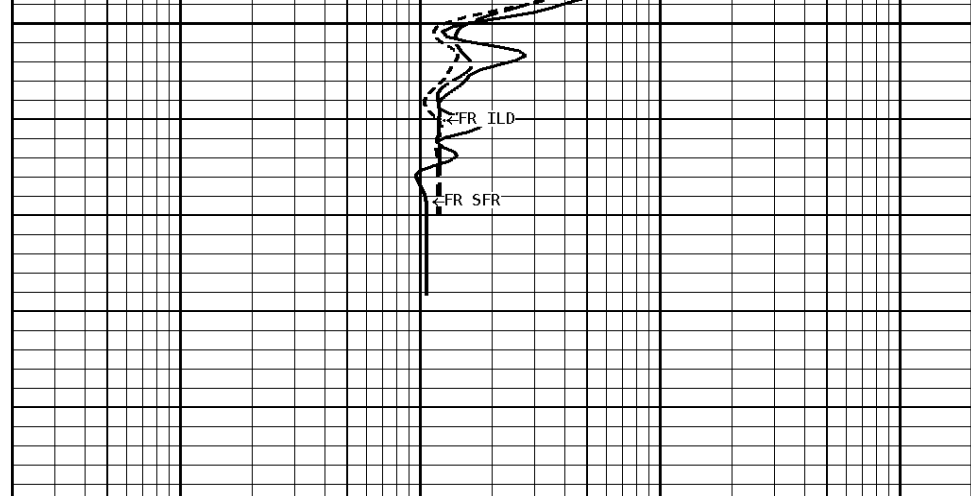
2400

2500





2600
2623



1:240 REPEAT SECTION

GAMMA RAY API UNITS	
150 0	300 150
TENSION LBS	
10000	0
SPONTANEOUS POTENTIAL mV	
→	←25

SHALLOW FOCUSED RESISTIVITY OHMM	
0.2	2000.0
MEDIUM INDUCTION OHMM	
0.2	2000.0
DEEP INDUCTION OHMM	
0.2	2000.0

*** Borehole Zone Factors ***

Zone 1 99999.0 to 0.0 Feet		
Drill Bit Size	7.875	in
Casing Diameter	5.500	in
BHT Depth	2623.000	ft
Borehole Temperature	115.0	degF
Temperature Gradient	1.00	DFHF
Resistivity Of Mud	0.800	ohm/m
Resistivity Of Mud Temperature	70.00	degF

*** Calibration Summary ***

Shop Calibration GRT-B				
Performed : 27-JUN-2014		Time : 09:30		
Sensor Suite : GR-GR5		ID : GRT-BB-006		
	Measured	Units	Calibrated	Units
GR	Background	Jig	Jig	
	62	374	175	GRAPI

Shop Calibration PIT-CA					
Performed : 15-APR-2014		Time : 14:04			
Sensor Suite : P-IND-T		ID : PIT-CA-062			
	Measured		Calibrated		
	R	X	R	X	
Air	130583	130713	-0.1	-0.1	MMHOS
Zero	131074	131072	27.3	6.4	MMHOS
Reference	253427	250043	5027.3	5006.4	MMHOS
Loop	130592	221688	3823.7	3823.0	MMHOS
Sonde Error			-1.3	-15.8	MMHOS
Cond			5027.3	5006.4	MMHOS

		Measured		Deep		Calibrated		Units
		R	X	R	X	R	X	
Air		129032	131483	-0.0	0.1			MMHOS
Zero		131074	131059	39.8	-17.0			MMHOS
Reference		233823	231658	2039.8	1983.0			MMHOS
Loop		129039	222242	1804.5	1804.3			MMHOS
Sonde Error				-8.5	-8.7			MMHOS
Cond				2039.8	1983.0			MMHOS

		Measured		Temperature		Calibrated		Units
		Low	High	Low	High	Low	High	
		16980.0	56920.0	70.0	350.0			DEGF

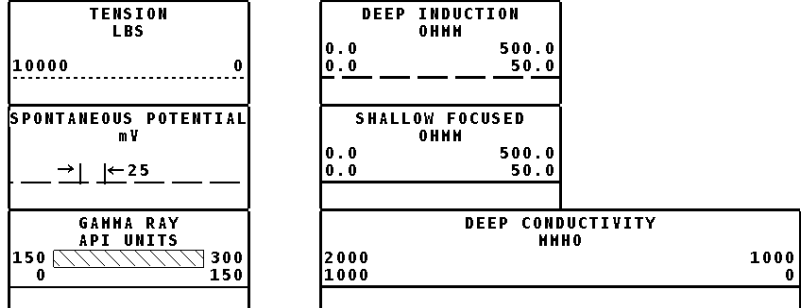
Performed : 15-Apr-2014	Time : 13:51
Sensor Suite : SFL	ID : PIT-CA-062

		Measured		Internal		Calibrated		Units
		Zero	Reference	Zero	Reference	Zero	Reference	
Im		32763.3	48949.7	0.0	7028.0			uA
Ib		32767.3	48756.3	0.0	1750.0			mA
MOM1		32726.5	57507.3	0.0	175.0			mV
Equivalent SFL					43.97			OHMM

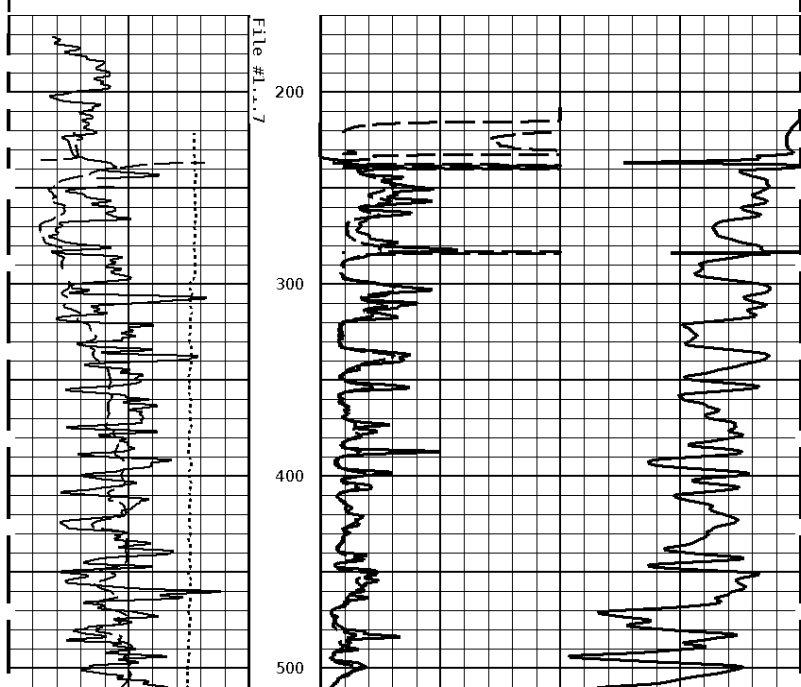
Performed : 15-Apr-2014	Time : 13:49
Sensor Suite : P-SP	ID : PIT-CA-062

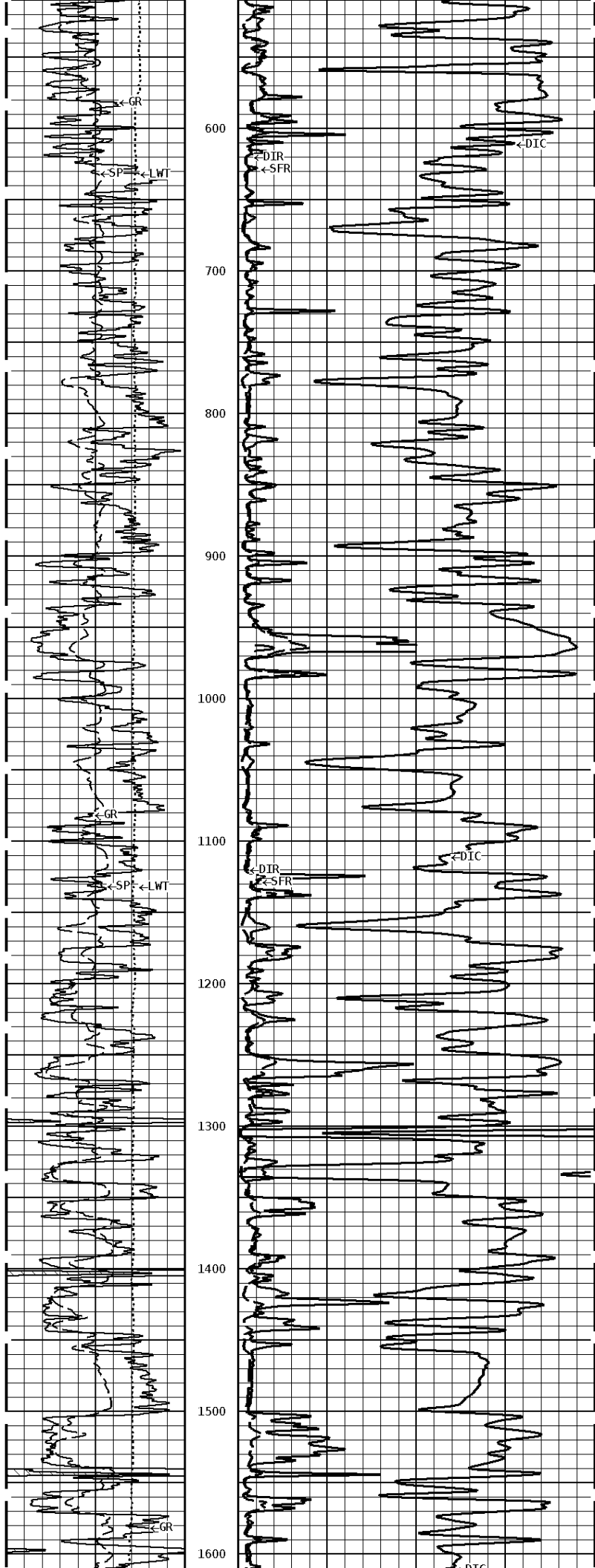
		Measured		Internal		Calibrated		Units
		Zero	Reference	Zero	Reference	Zero	Reference	
		32765.9	58980.4	0.0	1000.0			mV

Well File: NOBLE_BUSENITZ_1_SEP11_MSTK Scale: 1:1200 Format: DIL1200
Segment: V1.D1.S7 FINAL MAIN Acquired: 2014-09/11 04:29 3.4.0-13115
Reference: 0 Processed: 2014-09/11 06:20 3.4.0-13115



1:1200 MAIN SECTION





600

700

800

900

1000

1100

1200

1300

1400

1500

1600

GR

SP

LWT

DIR

SFR

DIC

GR

SP

LWT

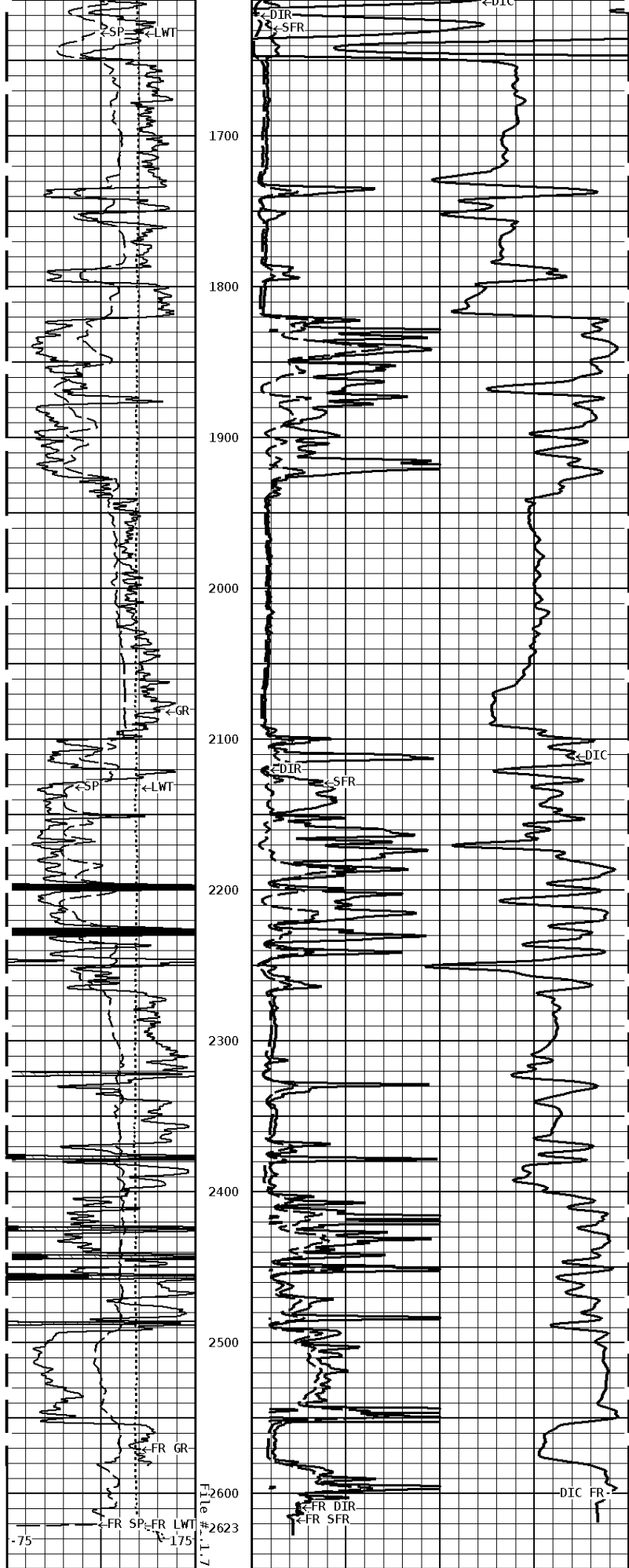
DIR

SFR

DIC

GR

DIC



1:1200 MAIN SECTION

GAMMA RAY
API UNITS

150 0 300 150

DEEP CONDUCTIVITY
MHMO

2000 1000 1000 0

SPONTANEOUS POTENTIAL
mV

→ | ← 25

SHALLOW FOCUSED
OHMM

0.0 500.0
0.0 50.0

TENSION
LBS

10000 0

DEEP INDUCTION
OHMM

0.0 500.0
0.0 50.0



Tucker
ENERGY SERVICES

Company: NOBLE PETROLEUM, INC.
 Well: BUSENITZ #1
 Location: 1632' FNL & 1564' FWL
 Logged: 09-11-2014
 K.B. Elev: 1415.0 Ft