



**GAMMA RAY  
CEMENT BOND  
COMPLETION LOG**

Company **POSTROCK ENERGY CORP.**  
 Well **GROSDIDIER, FRANCIS E. #15-7**  
 Field **CHEROKEE BASIN CBM**  
 County **NEOSHO** State **KANSAS**

Location: **API # : 15-133-27634-00-00**  
**2029 FSL & 1345 FEL**  
**NE NE NW SE**  
**SEC 15 TWP 28S RGE 20E**

Permanent Datum **GL** Elevation **933'**  
 Log Measured From **GL**  
 Drilling Measured From **GL**  
 Date **3-12-2013**

Run Number **1 NW**  
 Depth Diller **631'**  
 Depth Logger **625.9'**  
 Top Log Interval **0**  
 Bottom Logged Interval **620.9'**  
 Fluid Level **FULL**  
 Type Fluid **WATERS**  
 Production Casing **5" @ TD**  
 Max. Recorded Temp. **@**  
 Estimated Cement Top **@**  
 Calculated Cement Top **@**  
 Amount & Type Cement **@**  
 Drilling Contractor **GORRALLEY R**  
 Equipment Number **105**  
 Location **GORRALLEY R**  
 Recorded By **MICHELIS J**  
 Witnessed By **MICHELIS J**

<<< Fold Here >>>

All interpretations are opinions based on inferences from electrical or other measurements and we cannot and do not guarantee the accuracy or correctness of any interpretation, and we shall not, except in the case of gross or willful negligence on our part, be liable or responsible for any loss, costs, damages, or expenses incurred or sustained by anyone resulting from any interpretation made by any of our officers, agents or employees. These interpretations are also subject to our general terms and conditions set out in our current Price Schedule.

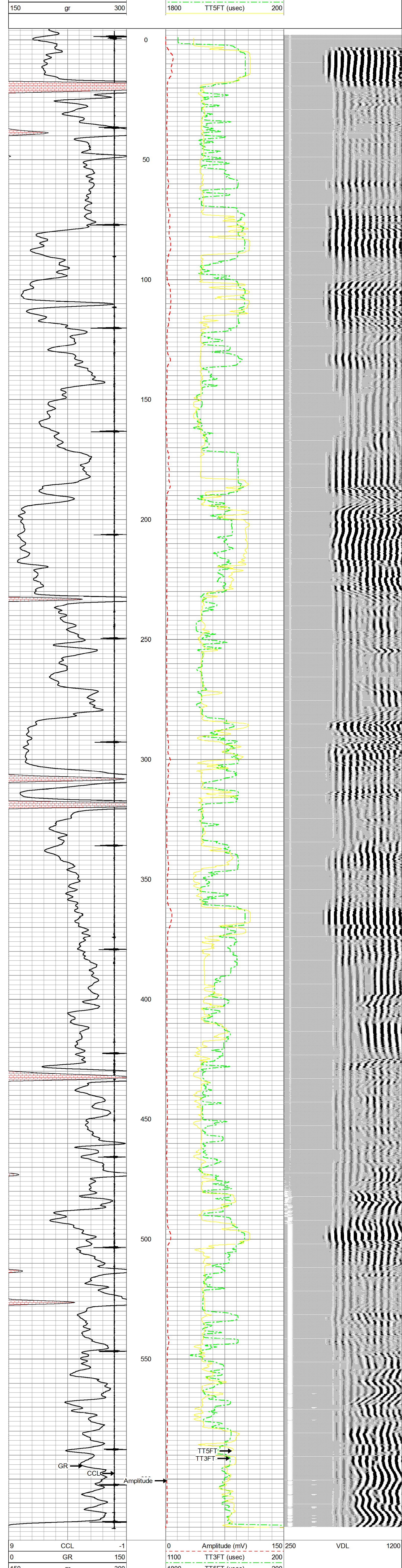
**Comments**

**THANK YOU**

Sensor	Offset (ft)	Schematic	Description	Len (ft)	OD (in)	Wt (lb)
			tekco tekco cent.	2.17	1.69	5.00
WVFCAL	2.17					
WVFSYNC	2.17					
WV3FT	6.58		CBLTEKCO-TEKCO2RCVR (TEKCO169) 1 11/16" TEKCO 2 RCVR DELAWARE	9.75	1.69	50.00
WV5FT	5.58					
			tekco tekco cent.	2.17	1.69	5.00

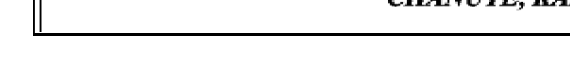
Dataset: grosdidier francis e #15-7.db; field/well/run1/pass2MERGE  
 Total Length: 14.08 ft  
 Total Weight: 60.00 lb  
 O.D.: 1.69 in

Database File: e:\grosdidier francis e #15-7.db  
 Dataset Pathname: pass2MERGE  
 Presentation Format: scbl\_dr  
 Dataset Creation: Tue Mar 12 09:05:56 2013  
 Charted by: Depth in Feet scaled 1:240



9 CCL -1  
 0 GR 150  
 150 gr 300

0 Amplitude (mV) 150 250 VDL 1200  
 1100 TT3FT (usec) 200  
 1800 TT5FT (usec) 200



Company **POSTROCK ENERGY CORP.**  
 Well **GROSDIDIER, FRANCIS E. #15-7**  
 Field **CHEROKEE BASIN CBM**  
 County **NEOSHO SECTION 15 TWP 28S RGE 20E**  
 State **KANSAS** Date **3-12-2013**