



**COMPLETION
& PRODUCTION
SERVICES CO.**

**MICRO
LOG**

Company BRINKER ENTERPRISES, LLC
Well KNIPP SW #36-1
Field WILDCAT
County ROOKS State KANSAS

Company BRINKER ENTERPRISES, LLC
Well KNIPP SW #36-1
Field WILDCAT
County ROOKS
State KANSAS

Location: API #: 15-163-24103-00-00
NW - SW - NE - SW
1943' FSL & 1628' FWL
SEC 36 TWP 7S RGE 20W
GROUND LEVEL Elevation 1925
Log Measured From KELLY BUSHING 5' A.G.L.
Drilling Measured From KELLY BUSHING
Other Services
CNL/CDL
DIL
Elevation
K.B. 1930
D.F. 1928
G.L. 1925

Date	3/14/13
Run Number	TW0
Depth Driller	3550
Depth Logger	3550
Bottom Logged Interval	3548
Top Log Interval	2700
Casing Driller	50
Casing Logger	50
Bit Size	7.785
Type Fluid in Hole	CHEMICAL MUD
Density / Viscosity	9.2 / 49
pH / Fluid Loss	10.5 / 7.6
Source of Sample	FLOWLINE
Rim @ Meas. Temp	1.05 @ 64F
Rmf @ Meas. Temp	0.79 @ 64F
Rmc @ Meas. Temp	1.30 @ 64F
Source of Rmf / Rmc	MEASURED
Rim @ BHT	0.60 @ 112F
Time Circulation Stopped	3 HOURS
Time Logger on Bottom	
Maximum Recorded Temperature	112F
Equipment Number	860
Location	HAYS, KS.
Recorded By	IAN MABB
Witnessed By	JEFF LAWLER

<<< Fold Here >>>

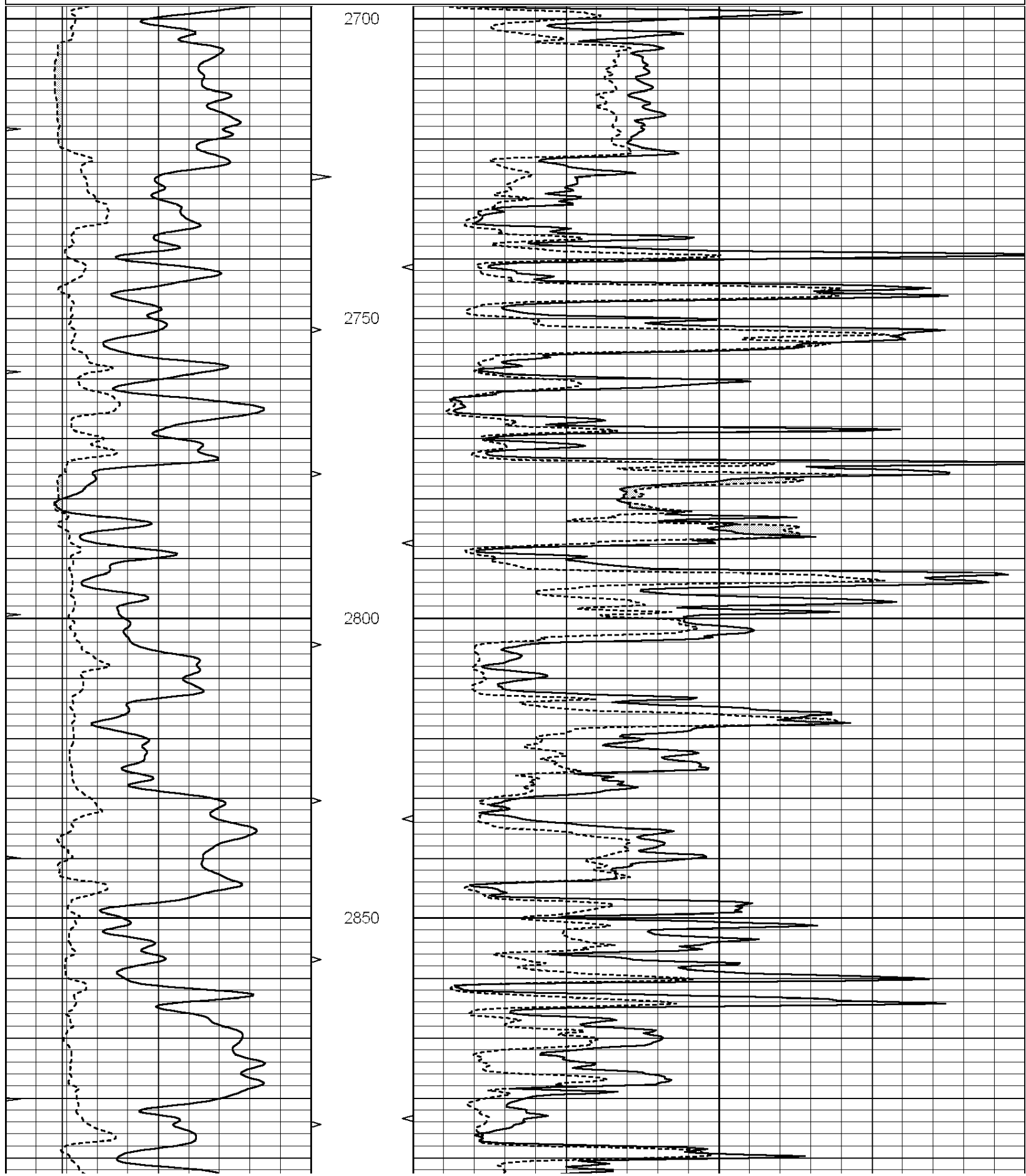
All interpretations are opinions based on inferences from electrical or other measurements and we cannot and do not guarantee the accuracy or correctness of any interpretation, and we shall not, except in the case of gross or willful negligence on our part, be liable or responsible for any loss, costs, damages, or expenses incurred or sustained by anyone resulting from any interpretation made by any of our officers, agents or employees. These interpretations are also subject to our general terms and conditions set out in our current Price Schedule.

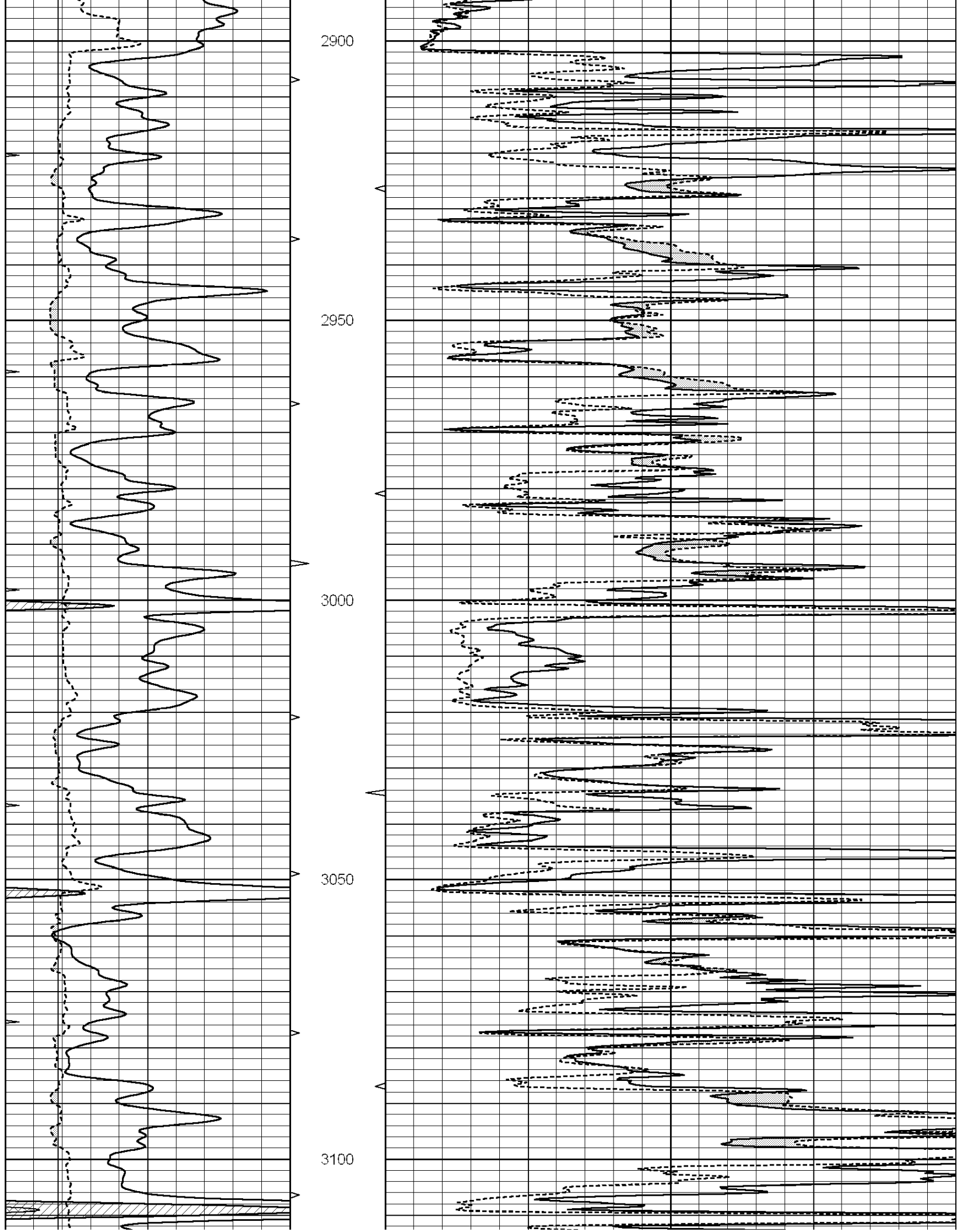
Comments

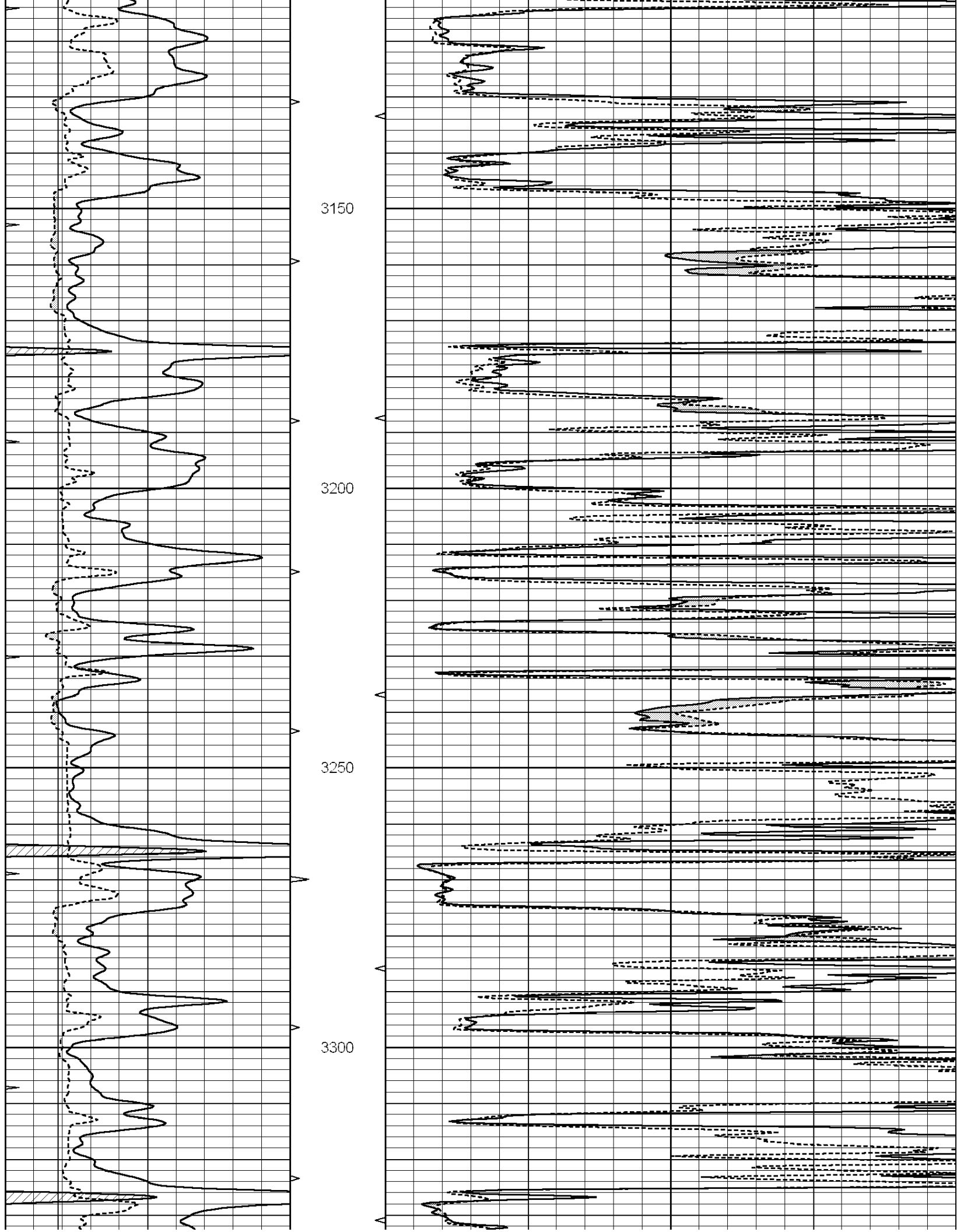
NABORS COMPLETION & PRODUCTION SERVICES
785-628-6395
THANK YOU FOR YOUR BUSINESS
DIRECTIONS: STOCKTON, KS. - WEST ON HWY 24 TO RD. 6 - 3/4 SOUTH EAST INTO

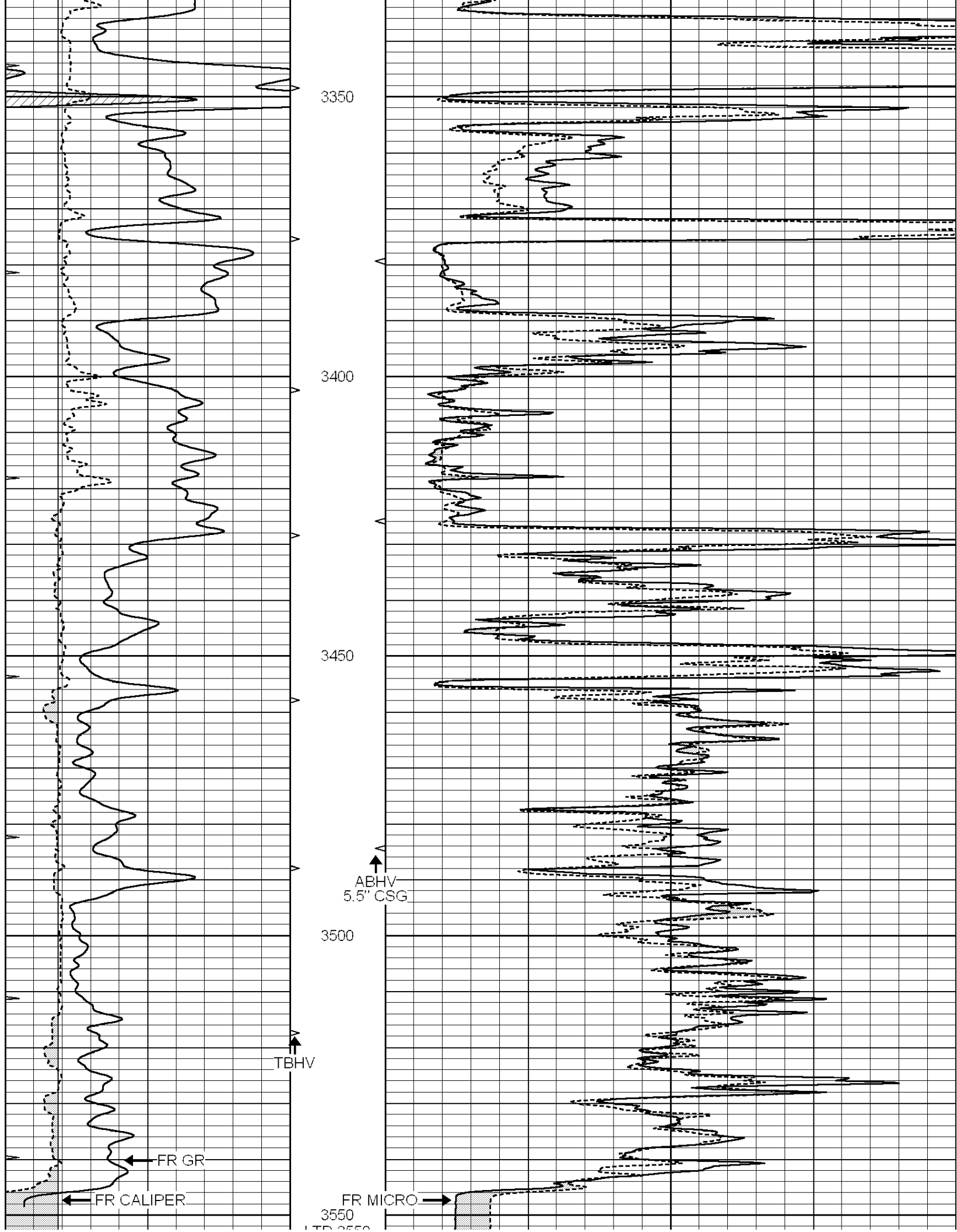
0	GAMMA RAY (GAPI)	150
6	MELCAL (in)	16
0	MINMK	20

0	MEL1.5 (Ohm-m)	40
0	MEL2.0 (Ohm-m)	40









0	GAMMA RAY (GAPI)	150
6	MELCAL (in)	16
0	MINMK	20

LTD 3330	0	MEL1.5 (Ohm-m)	40
	0	MEL2.0 (Ohm-m)	40

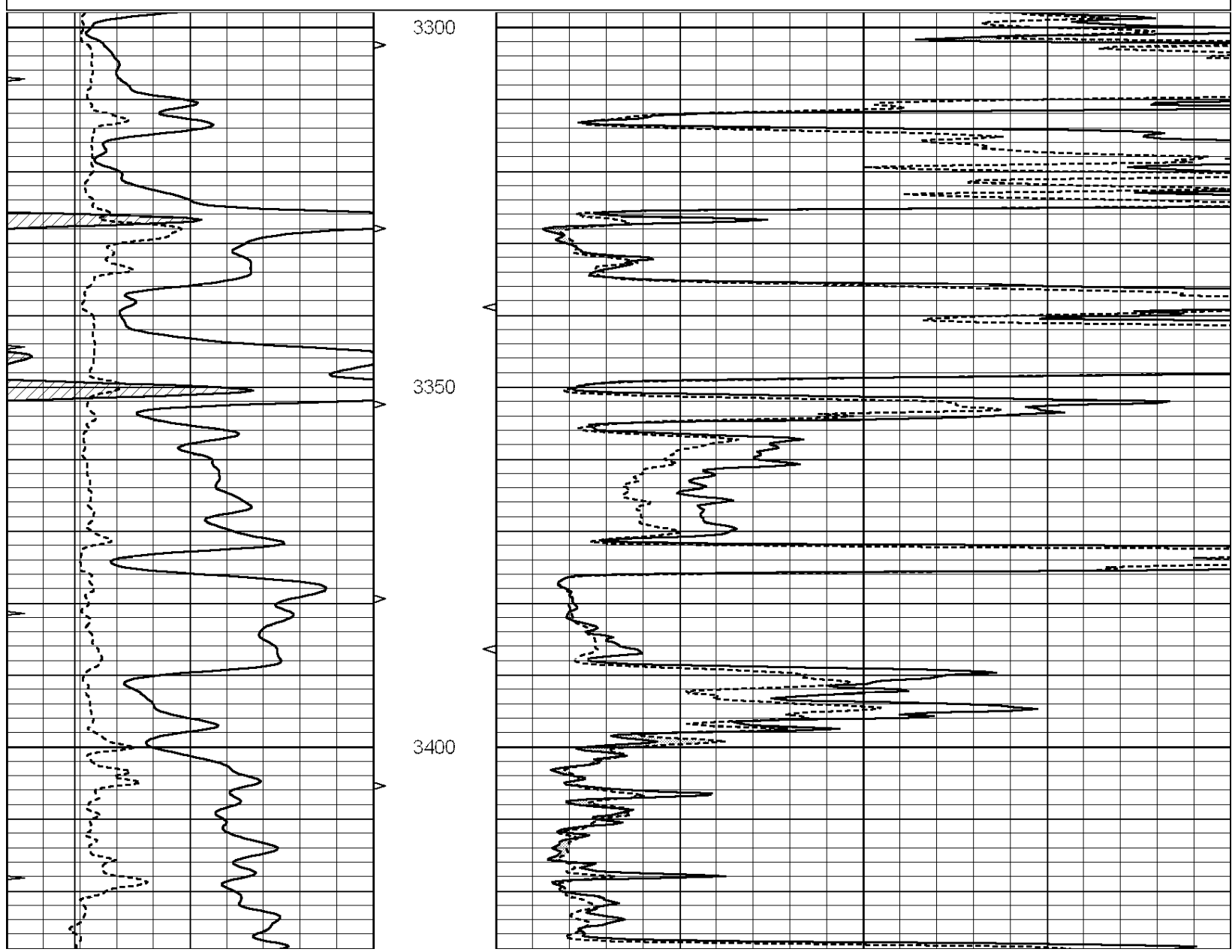


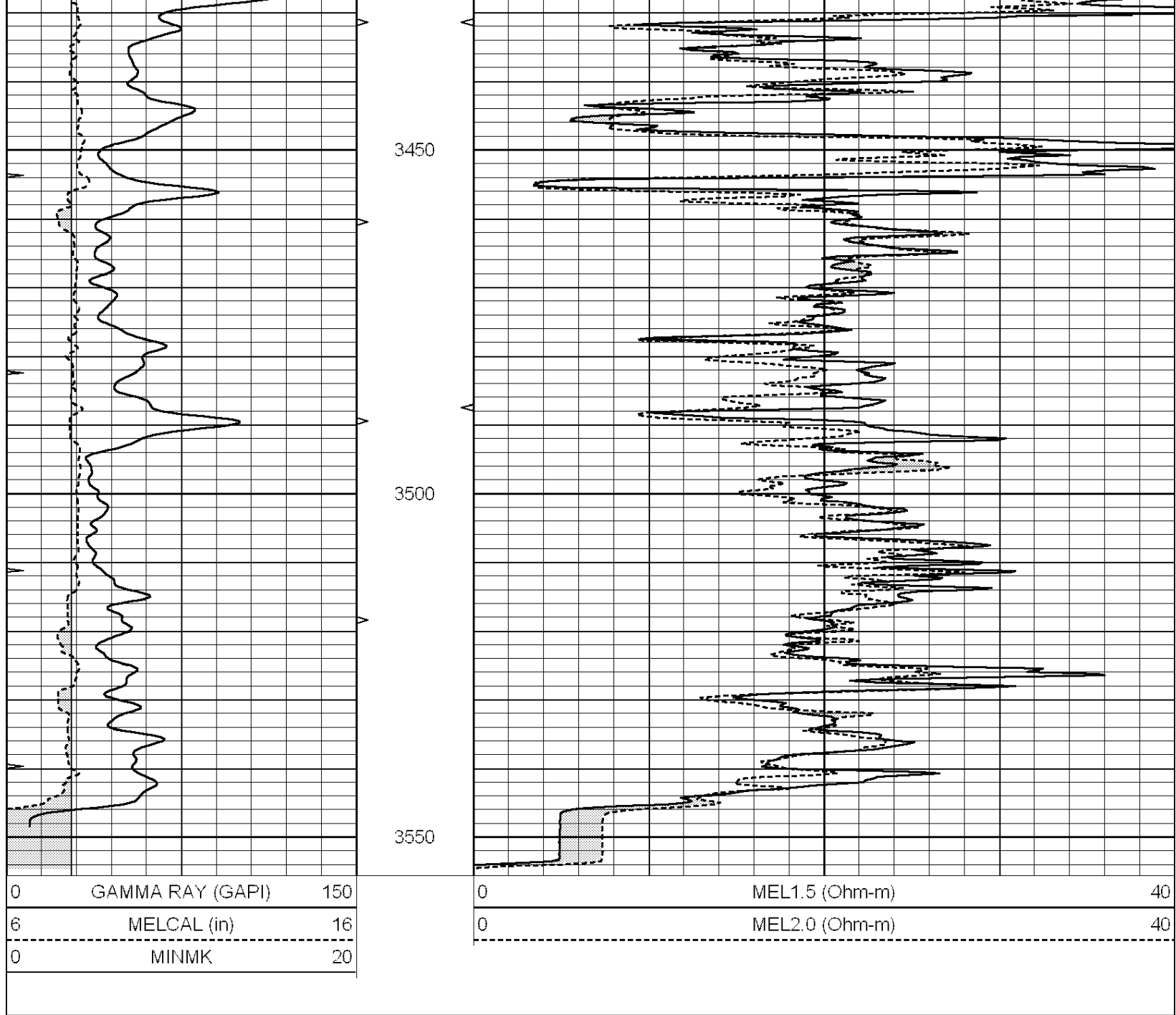
REPEAT SECTION

Database File: 010835ddn.db
 Dataset Pathname: pass5.6
 Presentation Format: micro
 Dataset Creation: Thu Mar 14 09:50:11 2013 by Calc Open-Cased 090629
 Charted by: Depth in Feet scaled 1:240

0	GAMMA RAY (GAPI)	150
6	MELCAL (in)	16
0	MINMK	20

0	MEL1.5 (Ohm-m)	40
0	MEL2.0 (Ohm-m)	40





Calibration Report

Database File: 010835ddn.db
 Dataset Pathname: pass6.1
 Dataset Creation: Thu Mar 14 09:55:24 2013 by Calc Open-Cased 090629

MICRO Calibration Report

Serial Number: MICRO4
 Tool Model: PROBE
 Performed: Wed Mar 13 02:48:46 2013

Caliper Calibration: Gain=2.675 Offset=-6.437

References	Low Cal	High Cal
Readings	8.600	14.000
	5.584	7.602

1.5" Calibration: Gain=40.000 Offset=-1.500

References	Low Cal	High Cal
	0.000	20.000

References	0.000	20.000
Readings	0.009	1.541
2" Calibration:	Gain=45.000	Offset=-0.500
	Low Cal	High Cal
References	0.000	20.000
Readings	0.004	1.198

Gamma Ray Calibration Report

Serial Number:	GR5	
Tool Model:	OPEN	
Performed:	Wed Mar 13 02:09:59 2013	
Calibrator Value:	1.0	GAPI
Background Reading:	0.0	cps
Calibrator Reading:	1.0	cps
Sensitivity:	1.4500	GAPI/cps