



**COMPLETION
& PRODUCTION
SERVICES CO.**

**MICRO
LOG**

Company REILLY OIL COMPANY, INC.
Well ANGIE #1-4
Field MARY HANNA SOUTHWEST
County TREGO
State KANSAS

Company REILLY OIL COMPANY, INC.
Well ANGIE #1-4
Field MARY HANNA SOUTHWEST
County TREGO State KANSAS

Location: API # : 15-195-22872-0000
972' FNL & 1175' FWL
NE - SE - NW - NW
SEC 4 TWP 11S RGE 24W
Permanent Datum GROUND LEVEL Elevation 2320
Log Measured From KELLY BUSHING 8' A.G.L.
Drilling Measured From KELLY BUSHING
Other Services
CDL/CNL
DIL
Elevation
K.B. 2328
D.F. 2326
G.L. 2320

Date	7/1/13
Run Number	TWO
Depth Driller	3970
Depth Logger	3966
Bottom Logged Interval	3964
Top Log Interval	3300
Casing Driller	8 5/8"@219'
Casing Logger	220
Bit Size	7 7/8"
Type Fluid in Hole	CHEMICAL MUD
Density / Viscosity	9.4/45
pH / Fluid Loss	9.5/9.2
Source of Sample	FLOWLINE
Rim @ Meas. Temp	.650@89F
Rmf @ Meas. Temp	.488@89F
Rmc @ Meas. Temp	.780@89F
Source of Rmf / Rmc	MEASUREMENT
Rim @ BHT	.499@116F
Time Circulation Stopped	3.5 HOURS
Time Logger on Bottom	9:15 A.M.
Maximum Recorded Temperature	116F
Equipment Number	4854
Location	HAYS, KANSAS
Recorded By	JEFF LUEBBERS
Witnessed By	RICHARD BELL

<<< Fold Here >>>

All interpretations are opinions based on inferences from electrical or other measurements and we cannot and do not guarantee the accuracy or correctness of any interpretation, and we shall not, except in the case of gross or willful negligence on our part, be liable or responsible for any loss, costs, damages, or expenses incurred or sustained by anyone resulting from any interpretation made by any of our officers, agents or employees. These interpretations are also subject to our general terms and conditions set out in our current Price Schedule.

Comments

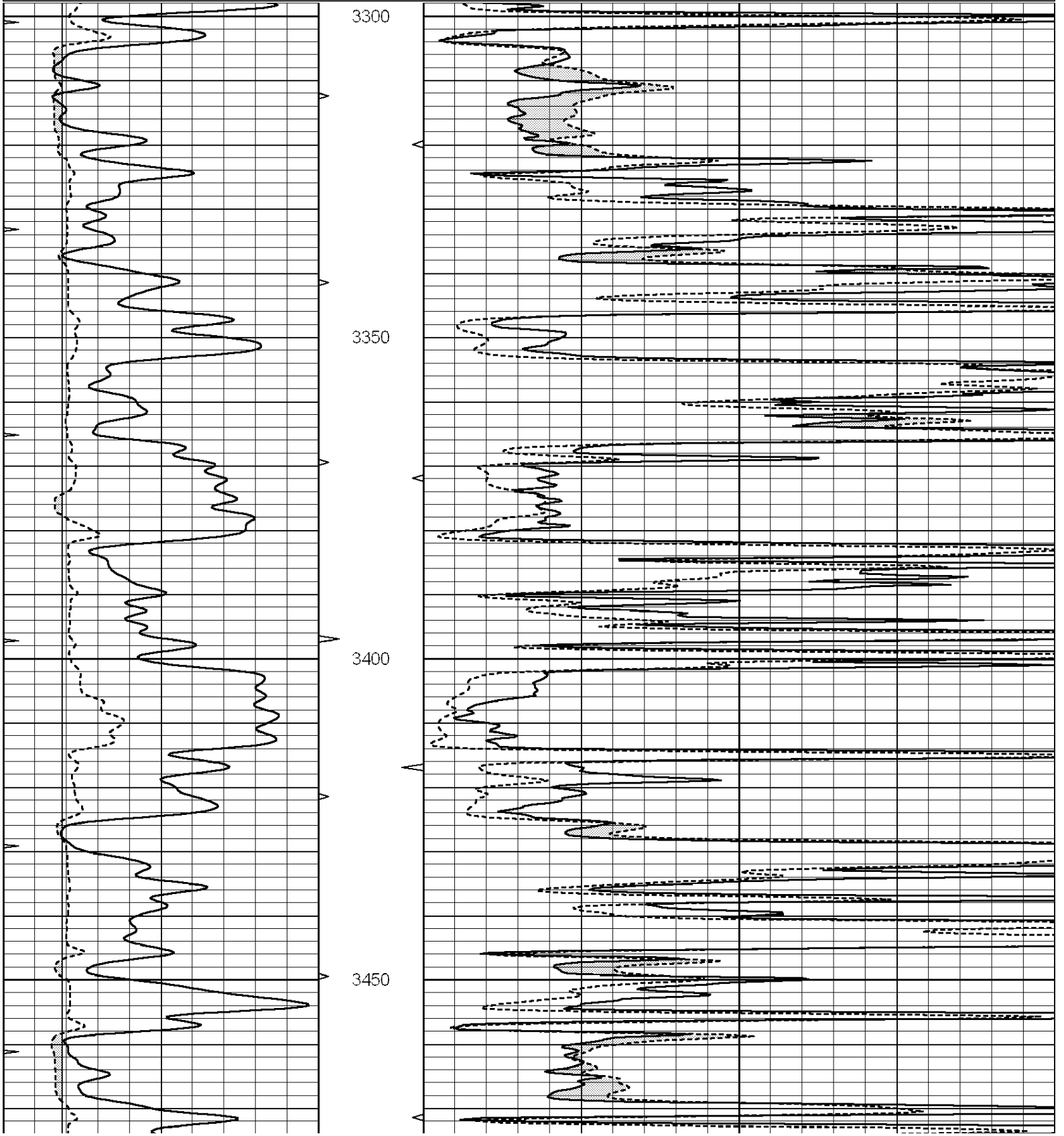
THANK YOU FOR USING "NABORS" HAYS, KANSAS (785) 628-6395
DIRECTIONS
WAKEENEY, KS. 6N. ON HWY 283 TO "RD. B", 6 1/2W., 1/4N. INTO @SHELTER BELT. FOLLOW
TERRACE EAST & BACK NORTH THROUGH TREES

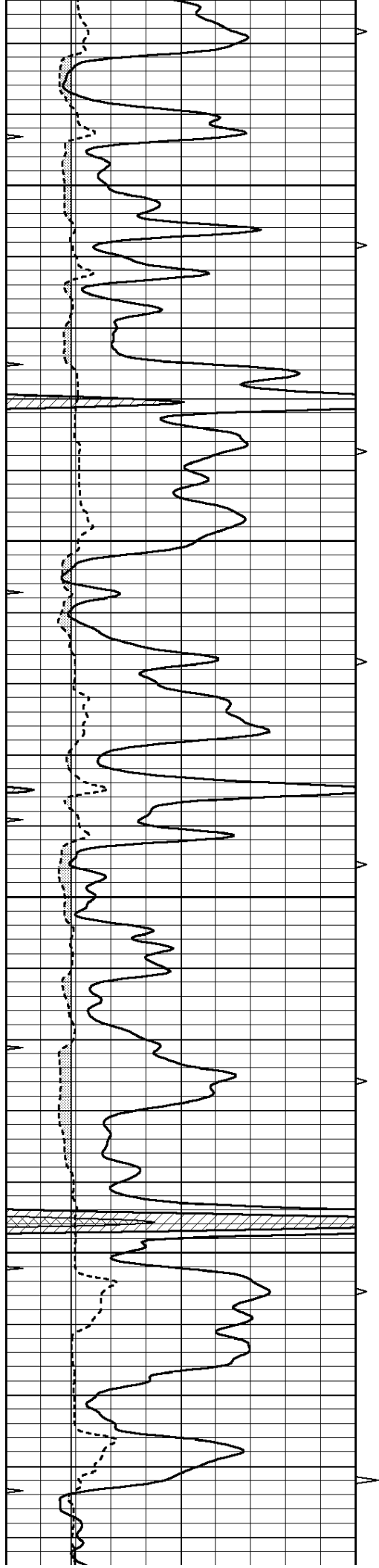


MAIN SECTION

Database File: 011180ddn.db
 Dataset Pathname: pass6.3
 Presentation Format: micro
 Dataset Creation: Mon Jul 01 11:49:32 2013 by Calc SOC 120430
 Charted by: Depth in Feet scaled 1:240

0	GAMMA RAY (GAPI)	150	ABHV	0	MEL1.5 (Ohm-m)	40
6	CALIPER (in)	16	10 (ft3)	0	MEL2.0 (Ohm-m)	40
0	MINMK	20	TBHV			
			0 (ft3)	10		



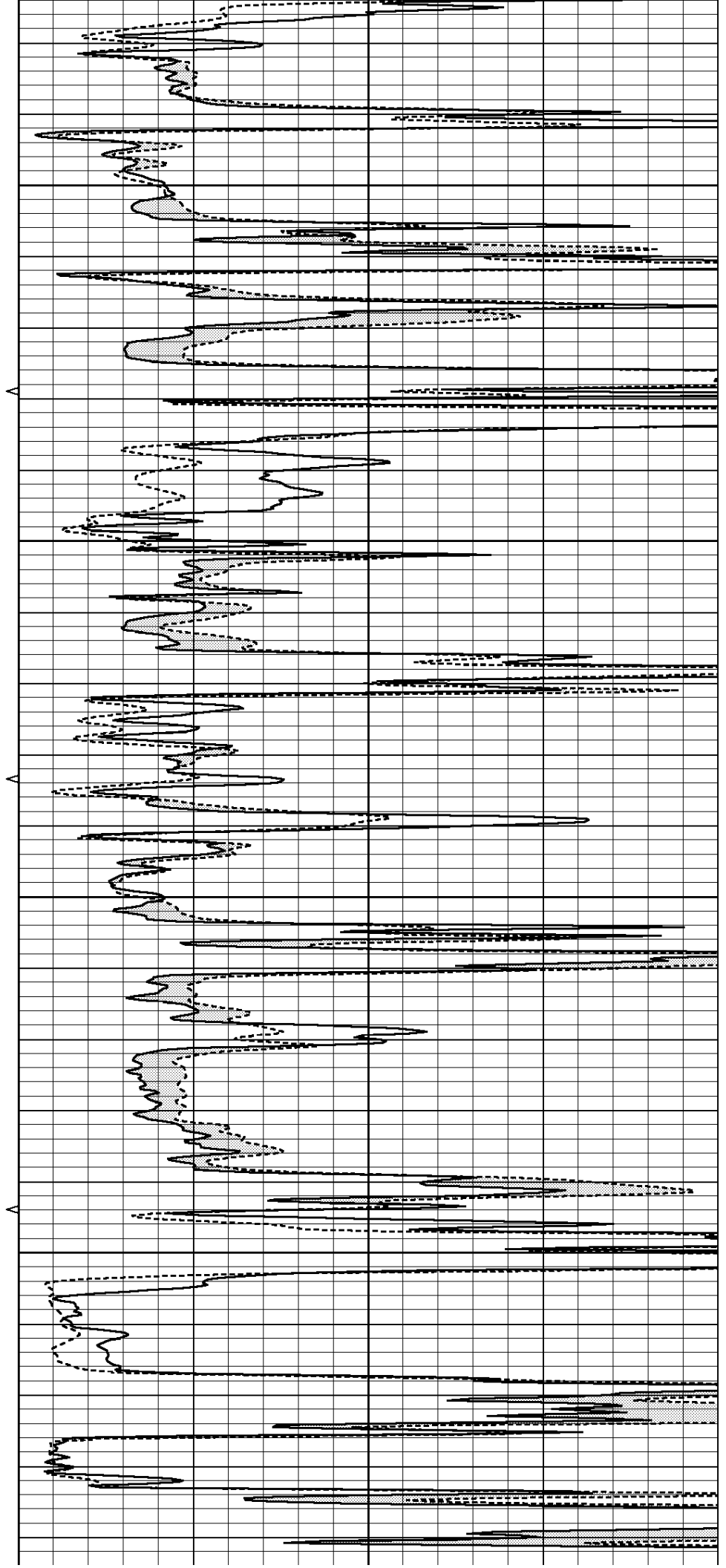


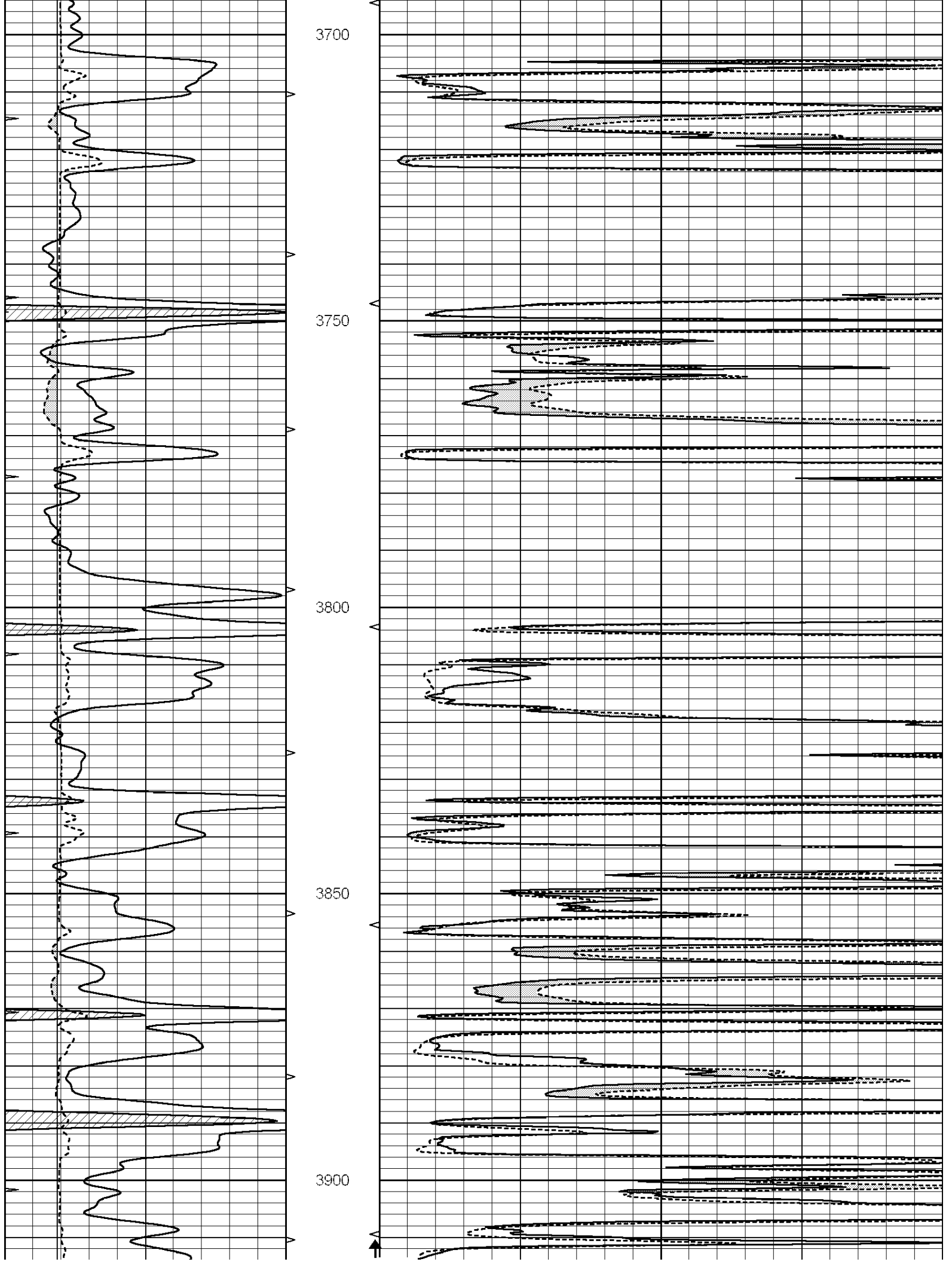
3500

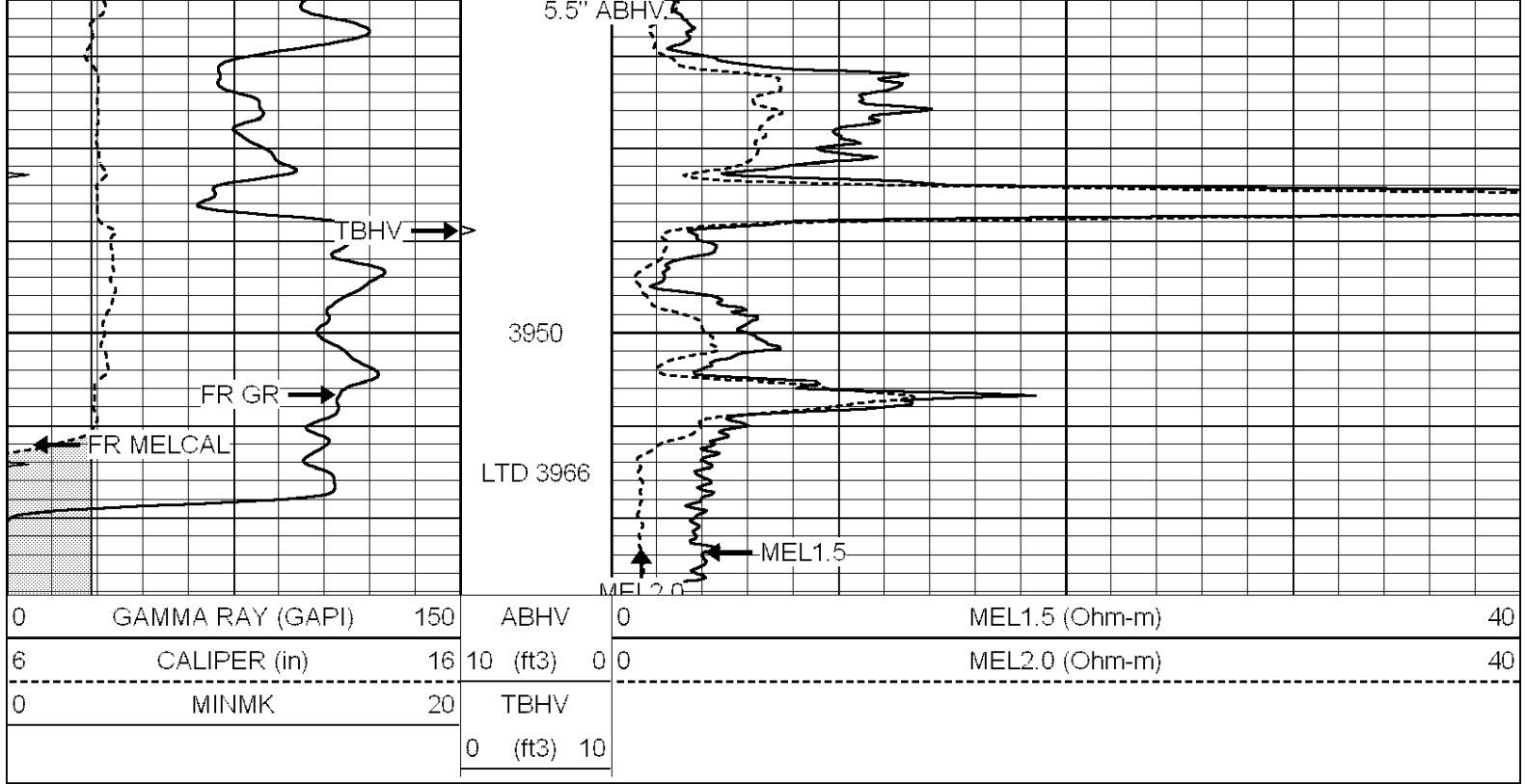
3550

3600

3650



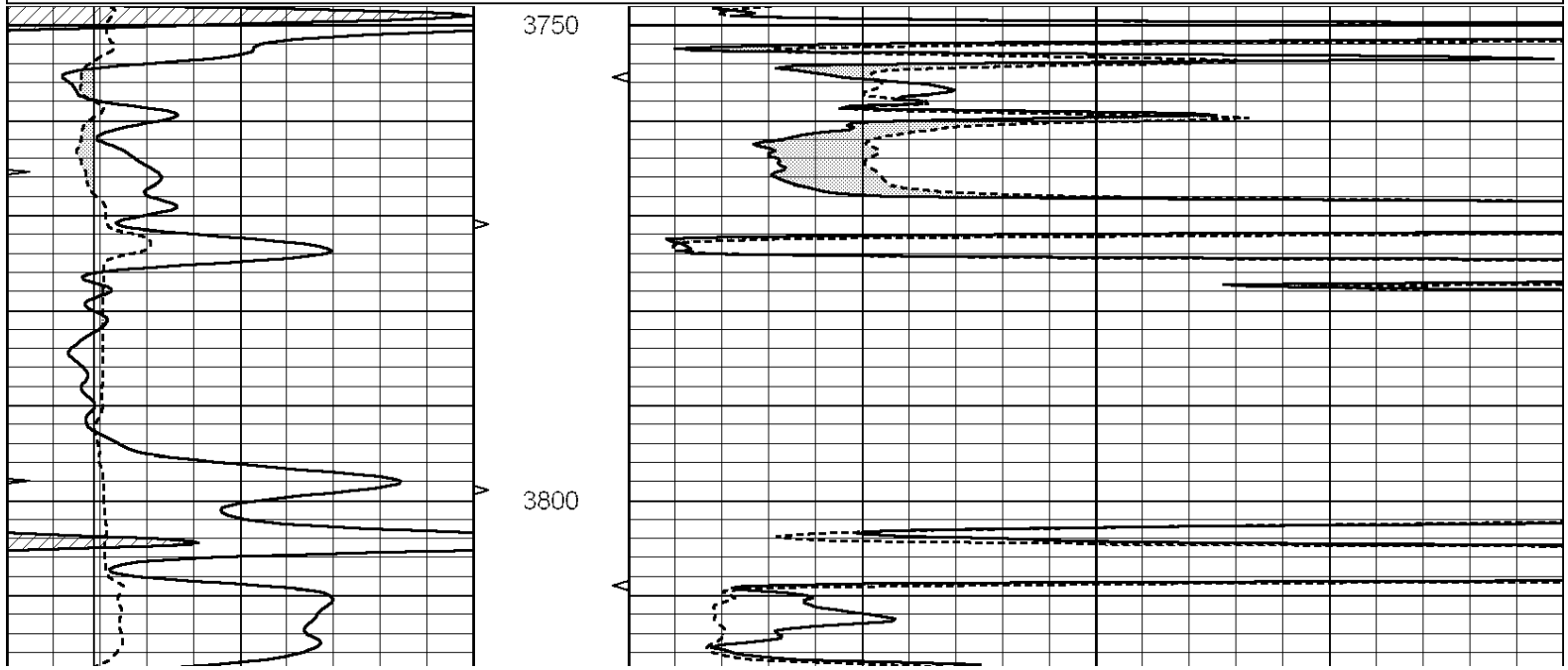


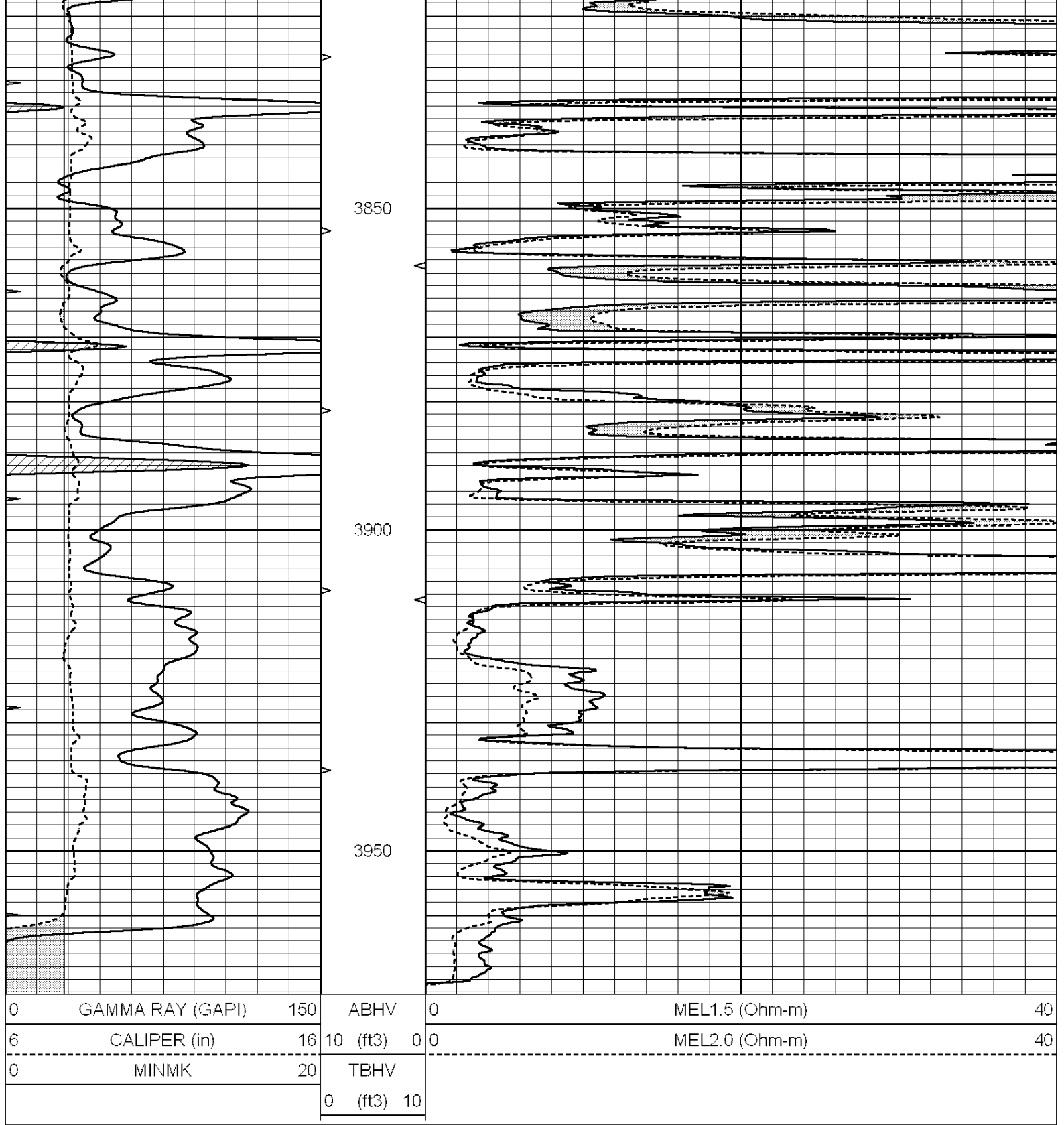


REPEAT SECTION

Database File: 011180ddn.db
 Dataset Pathname: pass5.3
 Presentation Format: micro
 Dataset Creation: Mon Jul 01 11:38:10 2013 by Calc SOC 120430
 Charted by: Depth in Feet scaled 1:240

0	GAMMA RAY (GAPI)	150	ABHV	0	MEL1.5 (Ohm-m)	40
6	CALIPER (in)	16	10 (ft3)	0	MEL2.0 (Ohm-m)	40
0	MINMK	20	TBHV			
			0 (ft3)	10		





Calibration Report

Database File: 011180ddn.db
 Dataset Pathname: pass6.3
 Dataset Creation: Mon Jul 01 11:49:32 2013 by Calc SOC 120430

MICRO Calibration Report

Serial Number: 2
 Tool Model: PROBE
 Performed: Sun Jun 23 22:34:27 2013

Caliper Calibration: Gain=6.446 Offset=-3.761

	Low Cal	High Cal
References	7.400	16.000
Readings	1.731	3.065
1.5" Calibration:	Gain=48.000	Offset=-3.000
	Low Cal	High Cal
References	0.000	20.000
Readings	0.015	0.458
2" Calibration:	Gain=55.000	Offset=-1.800
	Low Cal	High Cal
References	0.000	20.000
Readings	0.003	0.384
Gamma Ray Calibration Report		
Serial Number:	GR3	
Tool Model:	OPEN	
Performed:	Mon Jul 01 11:24:18 2013	
Calibrator Value:	200.0	GAPI
Background Reading:	3.0	cps
Calibrator Reading:	186.0	cps
Sensitivity:	1.1000	GAPI/cps