



Pioneer Energy Services

## Dual Compensated Porosity Log

**Company** The Bill Bowman Oil Company  
**Well** Danley A #1  
**Field** Hardesty  
**County** Decatur **State** Kansas  
**Location** 1175' FNL & 330' FWL  
**Other Services** DILMEL

**Sec:** 23 **Twp:** 5S **Rge:** 27W  
**Elevation** 2645  
**Log Measured From** Kelly Bushing **5 Ft. Above Perm. Datum**  
**Drilling Measured From** Kelly Bushing

**Permanent Datum** Ground Level  
**Log Measured From** Kelly Bushing  
**Drilling Measured From** Kelly Bushing  
**Elevation** 2650  
**K.B. D.F. G.L.** 2645

Date	6/23/2013	
Run Number	One	
Type Log	CNL / CDL	
Depth Driller	3974	
Depth Logger	3973	
Bottom Logged Interval	3952	
Top Logged Interval	3400	
Type Fluid In Hole	Chemical	
Salinity, PPM CL	1000	
Density Level	9.1	
Level	Full	
Max. Rec. Temp. F	118	
Operating Rig Time	4 Hours	
Equipment -- Location	91 Hays	
Recorded By	D. Schmidt	
Witnessed By	Justin Carter	

Borehole Record			Casing Record			
Run No.	Bit From	To	Size	Wgt. 23#	From	To
One	12.25	00	263	8.625	00	263
Two	7.875	263	TD			

<<< Fold Here >>>

All interpretations are opinions based on inferences from electrical or other measurements and we cannot and do not guarantee the accuracy or correctness of any interpretation, and we shall not, except in the case of gross or willful negligence on our part, be liable or responsible for any loss, costs, damages, or expenses incurred or sustained by anyone resulting from any interpretation made by any of our officers, agents or employees. These interpretations are also subject to our general terms and conditions set out in our current Price Schedule.

### Comments

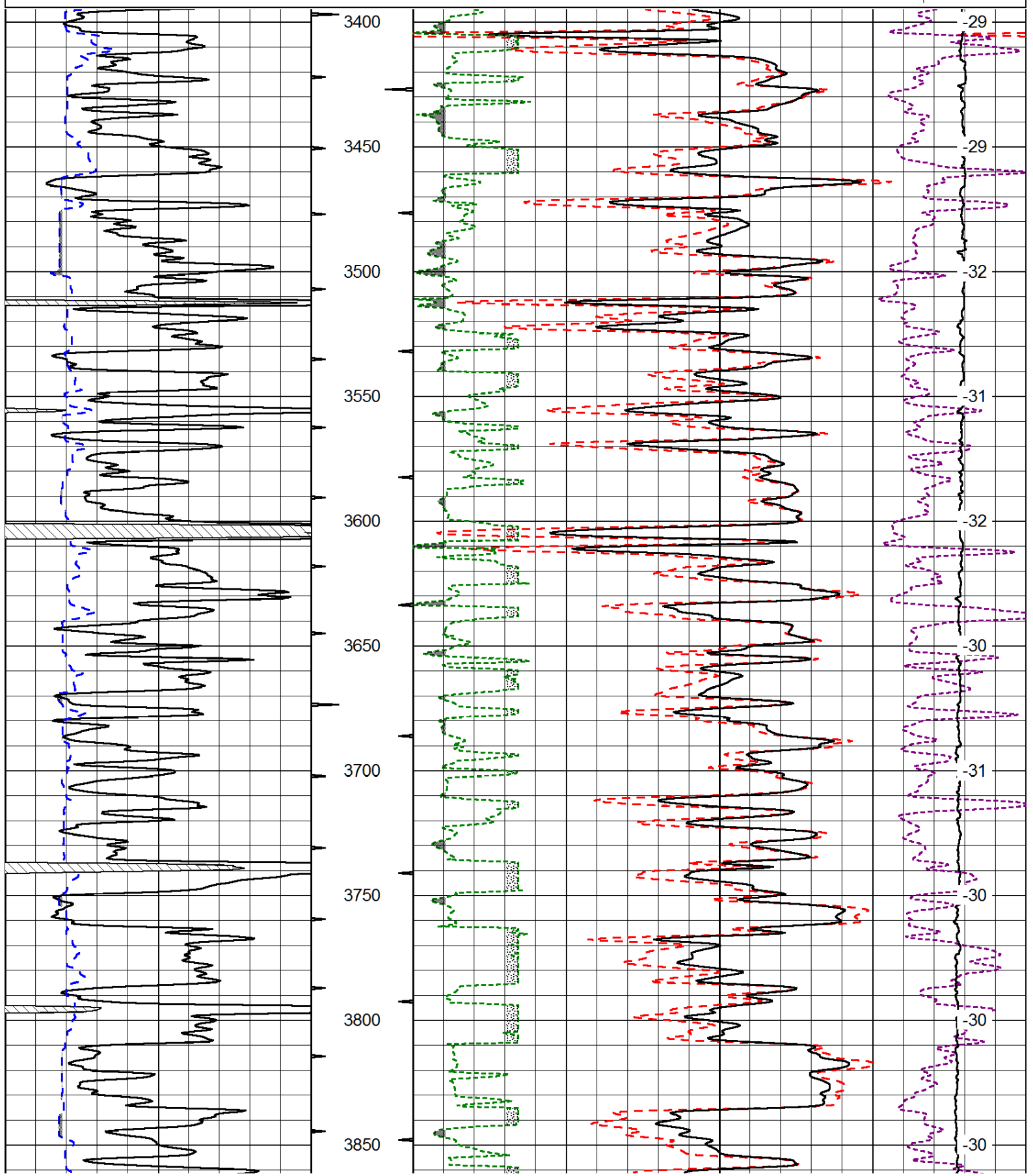
Thank you for using Log-Tech, Inc.  
 (785) 625-3858  
  
 Lenora,  
 18 1/2 West, 2 3/4 North,  
 East into

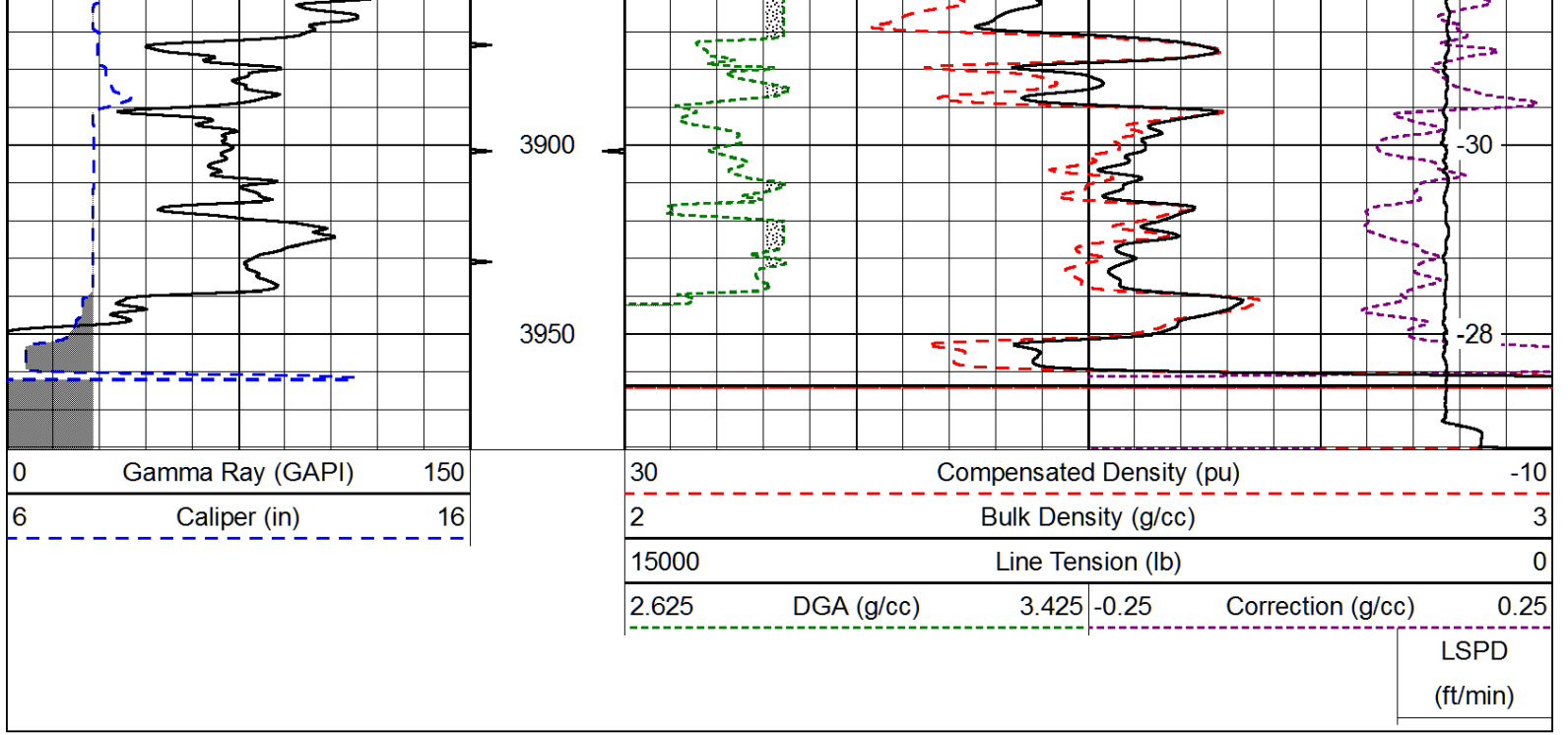
Database File: bowman\_062413hd.db  
 Dataset Pathname: dil/bowstk1  
 Presentation Format: cdl  
 Dataset Creation: Sun Jun 23 08:17:07 2013  
 Charted by: Depth in Feet scaled 1:600

0	Gamma Ray (GAPI)	150
6	Caliper (in)	16

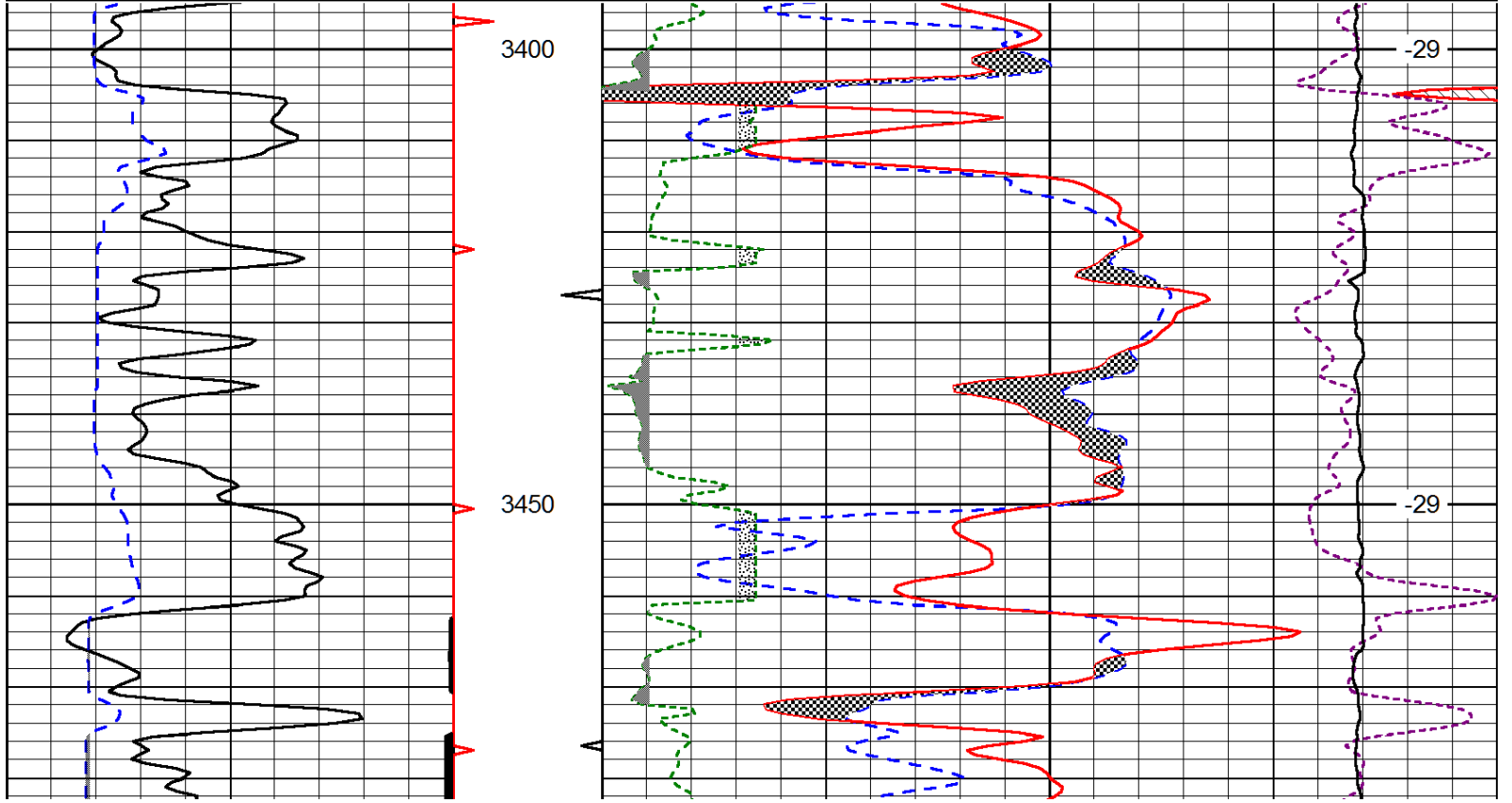
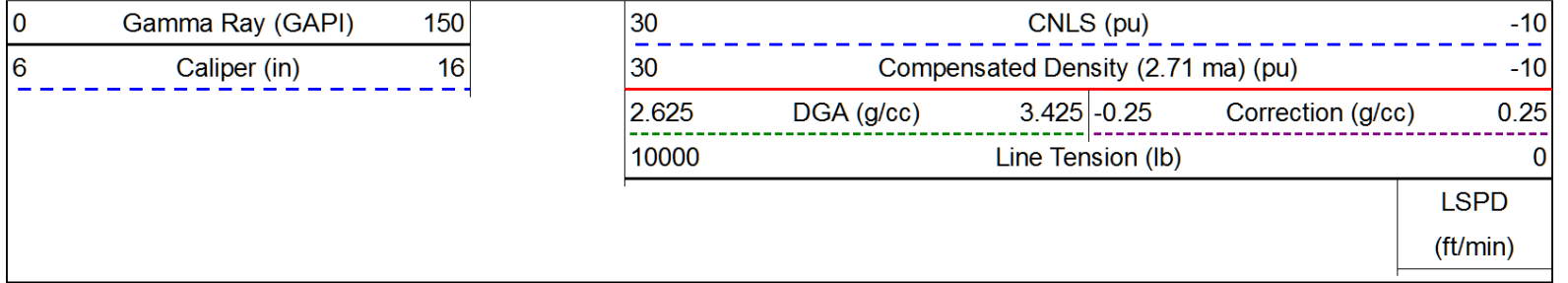
30	Compensated Density (pu)		-10
2	Bulk Density (g/cc)		3
15000	Line Tension (lb)		0
2.625	DGA (g/cc)	3.425	-0.25
		Correction (g/cc)	0.25

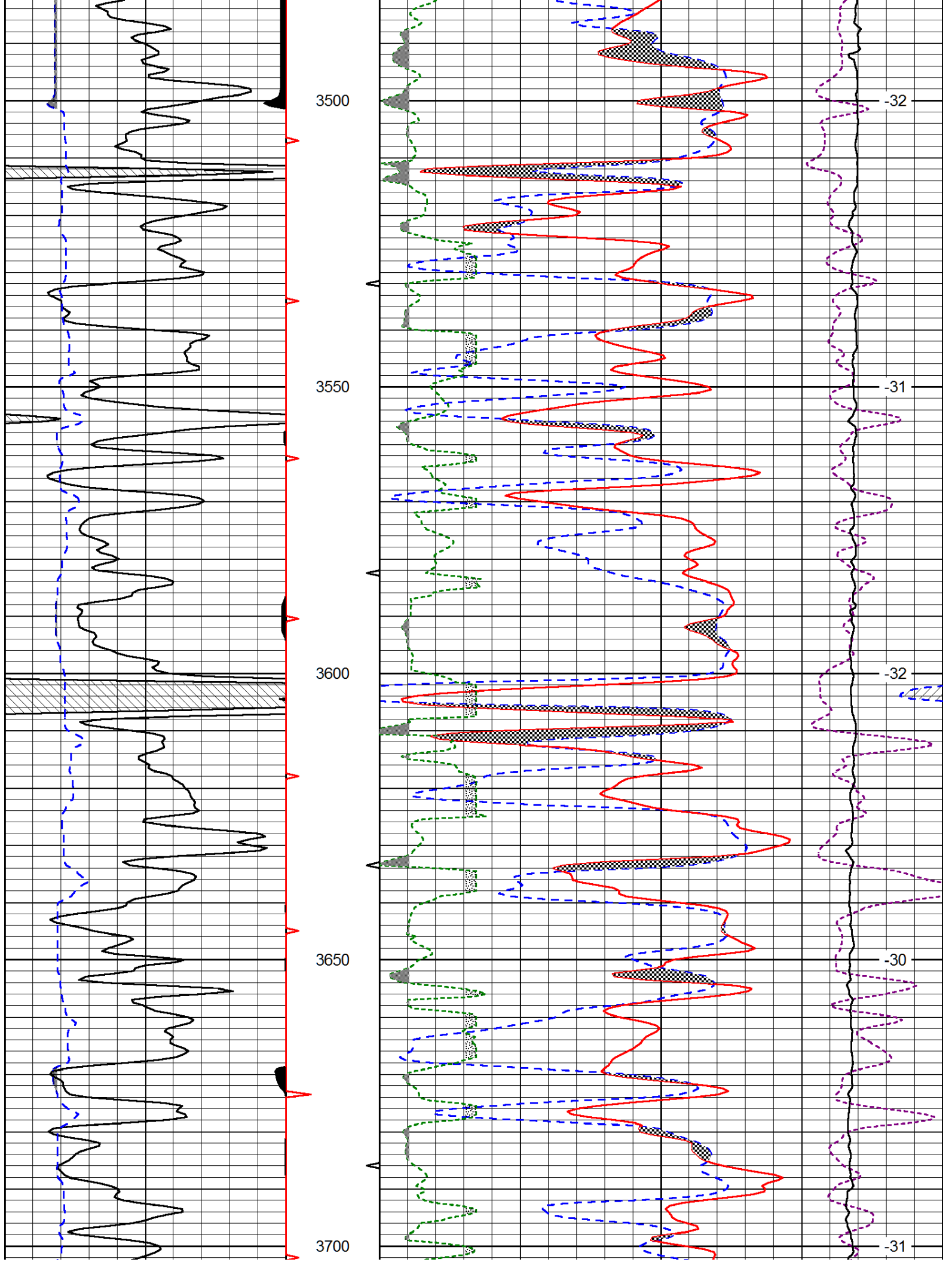
LSPD  
(ft/min)

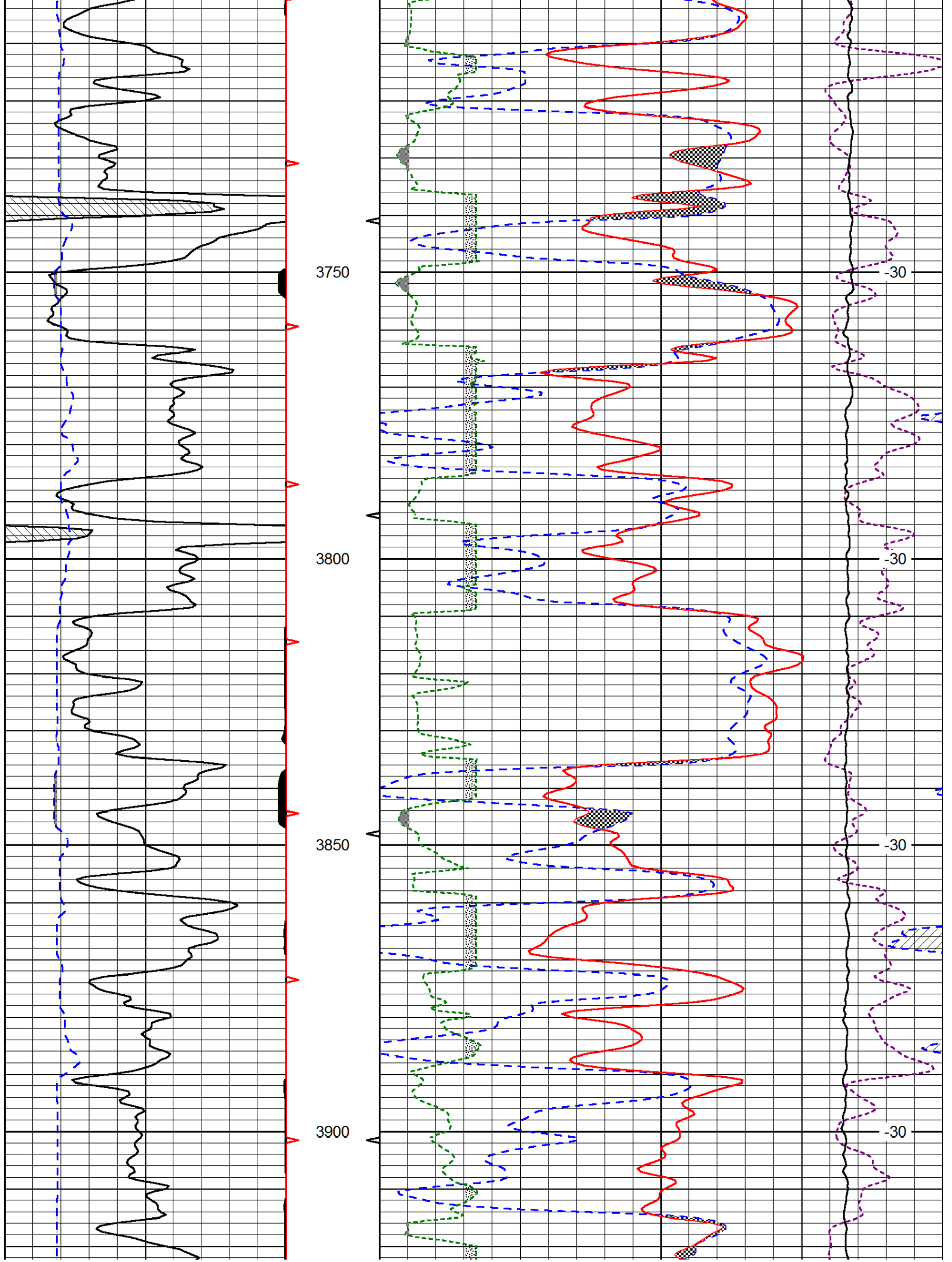


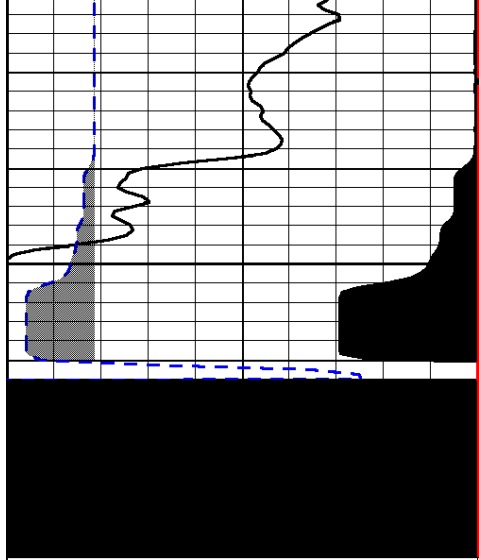


Database File: bowman\_062413hd.db  
 Dataset Pathname: dil/bowstk1  
 Presentation Format: cndlspec  
 Dataset Creation: Sun Jun 23 08:17:07 2013  
 Charted by: Depth in Feet scaled 1:240

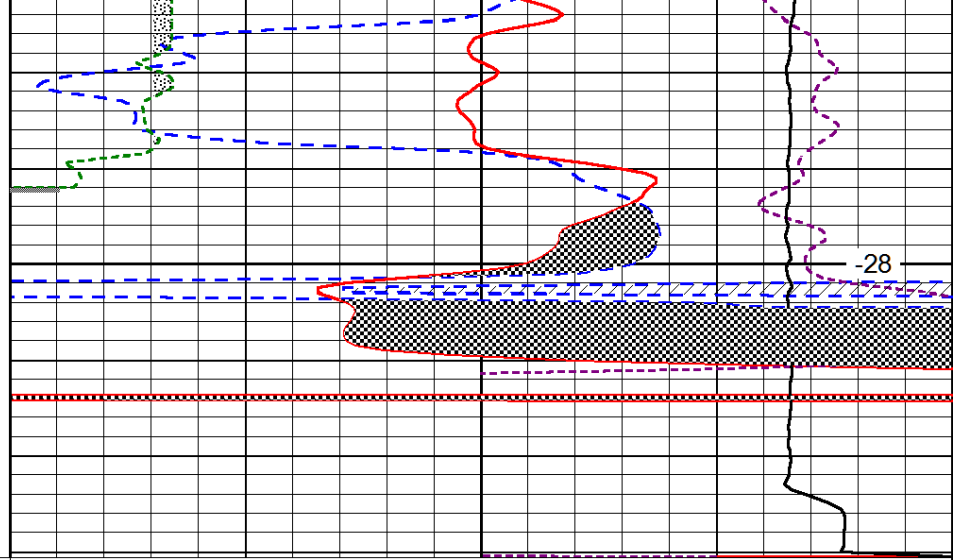








3950



0	Gamma Ray (GAPI)	150
6	Caliper (in)	16

30	CNLS (pu)			-10	
30	Compensated Density (2.71 ma) (pu)			-10	
2.625	DGA (g/cc)	3.425	-0.25	Correction (g/cc)	0.25
10000	Line Tension (lb)			0	

LSPD  
(ft/min)