



Pioneer Energy Services

Microresistivity Log

API No.	15-039-21182-00-00		
Company	The Bill Bowman Oil Company		
Well	Danley A #1		
Field	Hardesty		
County	Decatur	State	Kansas
Location	1175' FNL & 330' FWL		
Sec: 23	Twp: 5S	Rge: 27W	
Permanent Datum	Ground Level	Elevation	2645
Log Measured From	Kelly Bushing	5	Ft. Above Perm. Datum
Drilling Measured From	Kelly Bushing		
		Other Services	CNL/CDL DIL
		Elevation	K.B. 2650 D.F. 2645 G.L. 2645

Date	6/23/2013
Run Number	Two
Depth Driller	3974
Depth Logger	3973
Bottom Logged Interval	3972
Top Log Interval	3400
Casing Driller	8.625 @ 263
Casing Logger	260
Bit Size	7.875
Type Fluid in Hole	Chemical
Salinity, ppm CL	1000
Density / Viscosity	9.1 50
pH / Fluid Loss	9.5 8.8
Source of Sample	Flowline
Rm @ Meas. Temp	0.50 @ 76
Rmf @ Meas. Temp	0.37 @ 76
Rmc @ Meas. Temp	0.67 @ 76
Source of Rmf / Rmc	Charts
Rm @ BHT	0.32 @ 118
Operating Rig Time	4 Hours
Max Rec. Temp. F	118
Equipment Number	91
Location	Hays
Recorded By	D. Schmidt
Witnessed By	Justin Carter

<<< Fold Here >>>

All interpretations are opinions based on inferences from electrical or other measurements and we cannot and do not guarantee the accuracy or correctness of any interpretation, and we shall not, except in the case of gross or willful negligence on our part, be liable or responsible for any loss, costs, damages, or expenses incurred or sustained by anyone resulting from any interpretation made by any of our officers, agents or employees. These interpretations are also subject to our general terms and conditions set out in our current Price Schedule.

Comments

Thank you for using Log-Tech, Inc.
(785) 625-3858

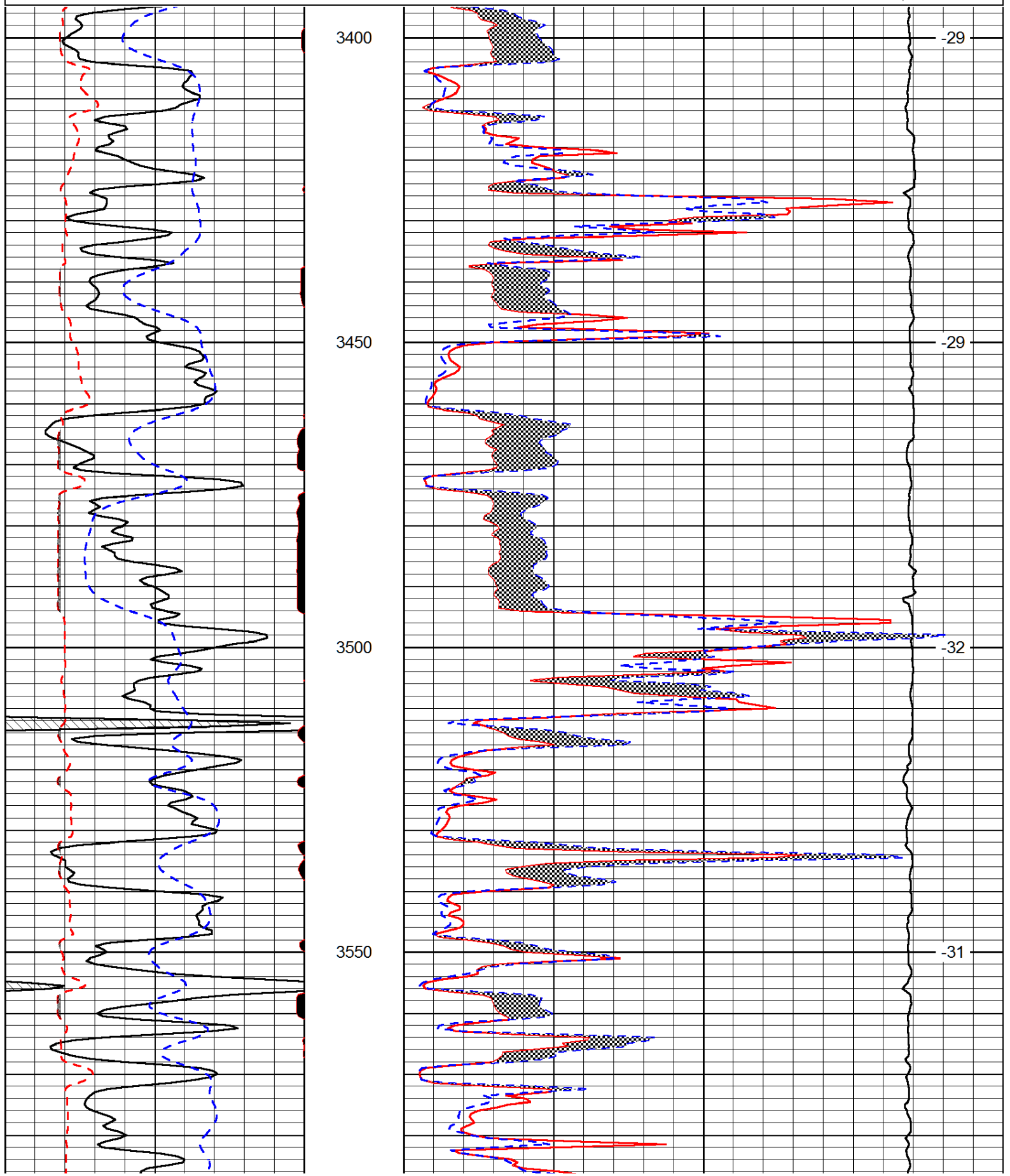
Lenora,
18 1/2 West, 2 3/4 North,
East into

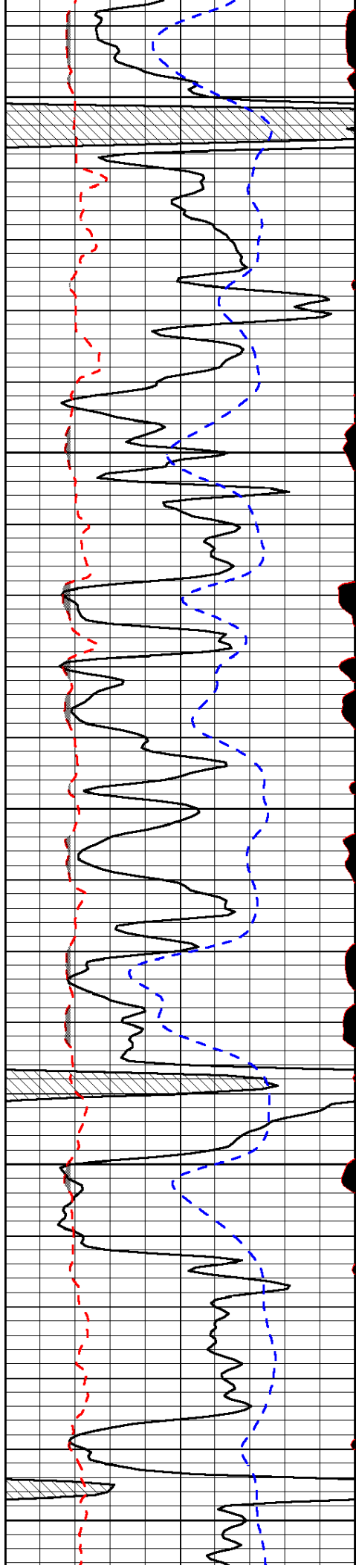
Database File: bowman_062413hd.db
 Dataset Pathname: dil/bowstk1
 Presentation Format: micro
 Dataset Creation: Sun Jun 23 08:17:07 2013
 Charted by: Depth in Feet scaled 1:240

0	Gamma Ray (GAPI)	150
6	MCAL (in)	16
2.875	Mud Cake (in)	7.875
-200	SP (mV)	0

0	Micro Inverse 1 X 1 (Ohm-m)	40
0	Micro Normal 2" (Ohm-m)	40
10000	Line Weight (lb)	0

LSPD
(ft/min)





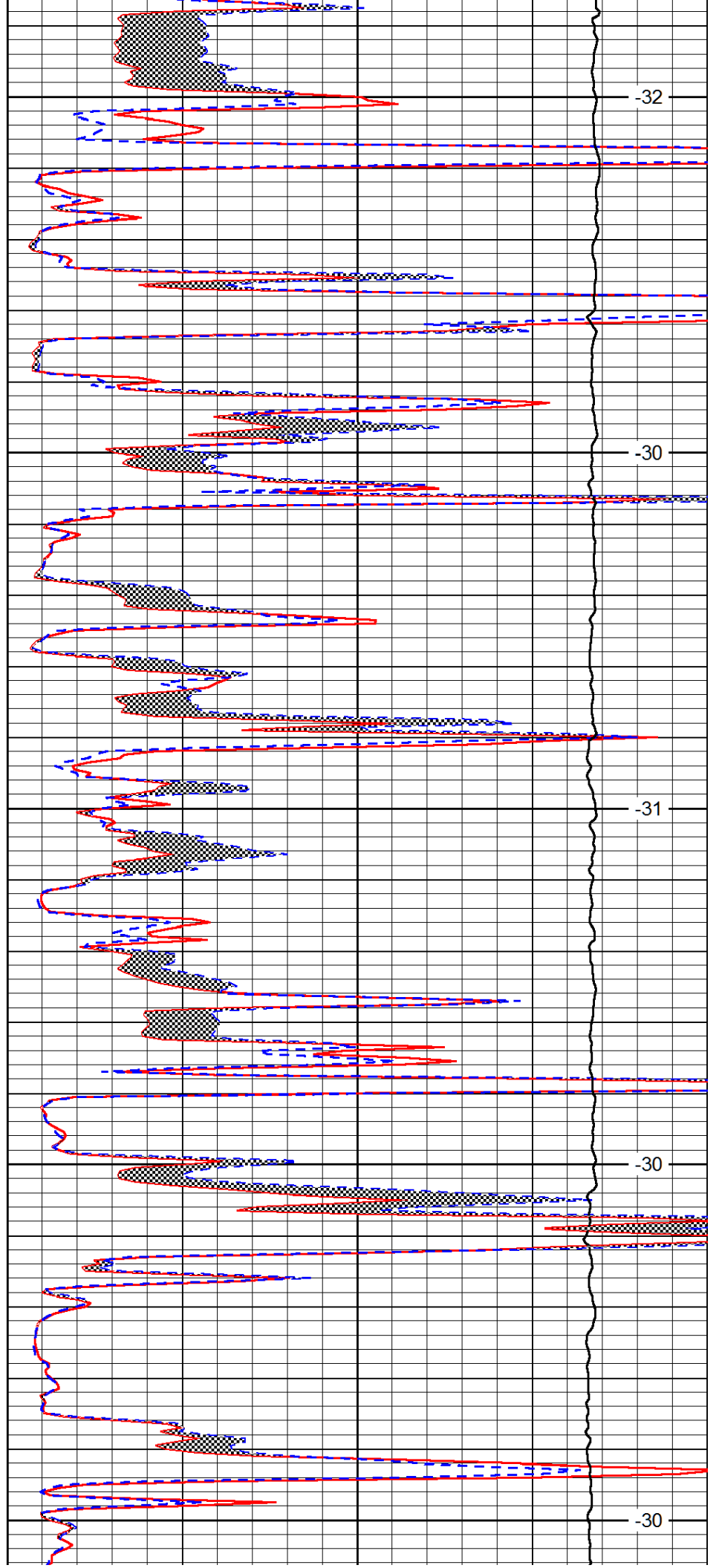
3600

3650

3700

3750

3800



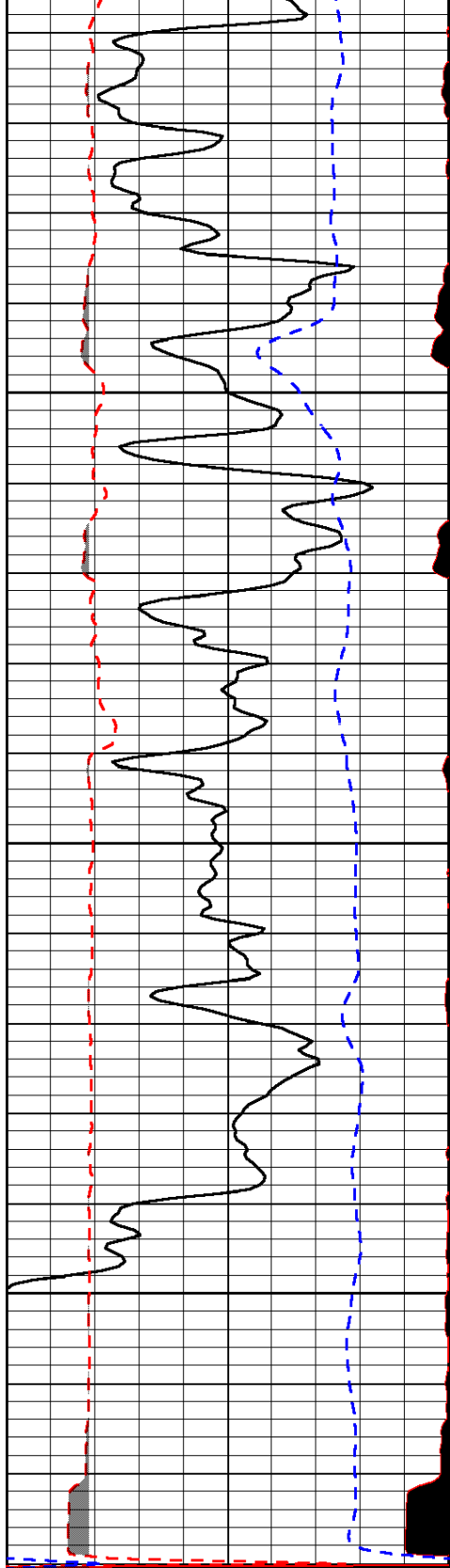
-32

-30

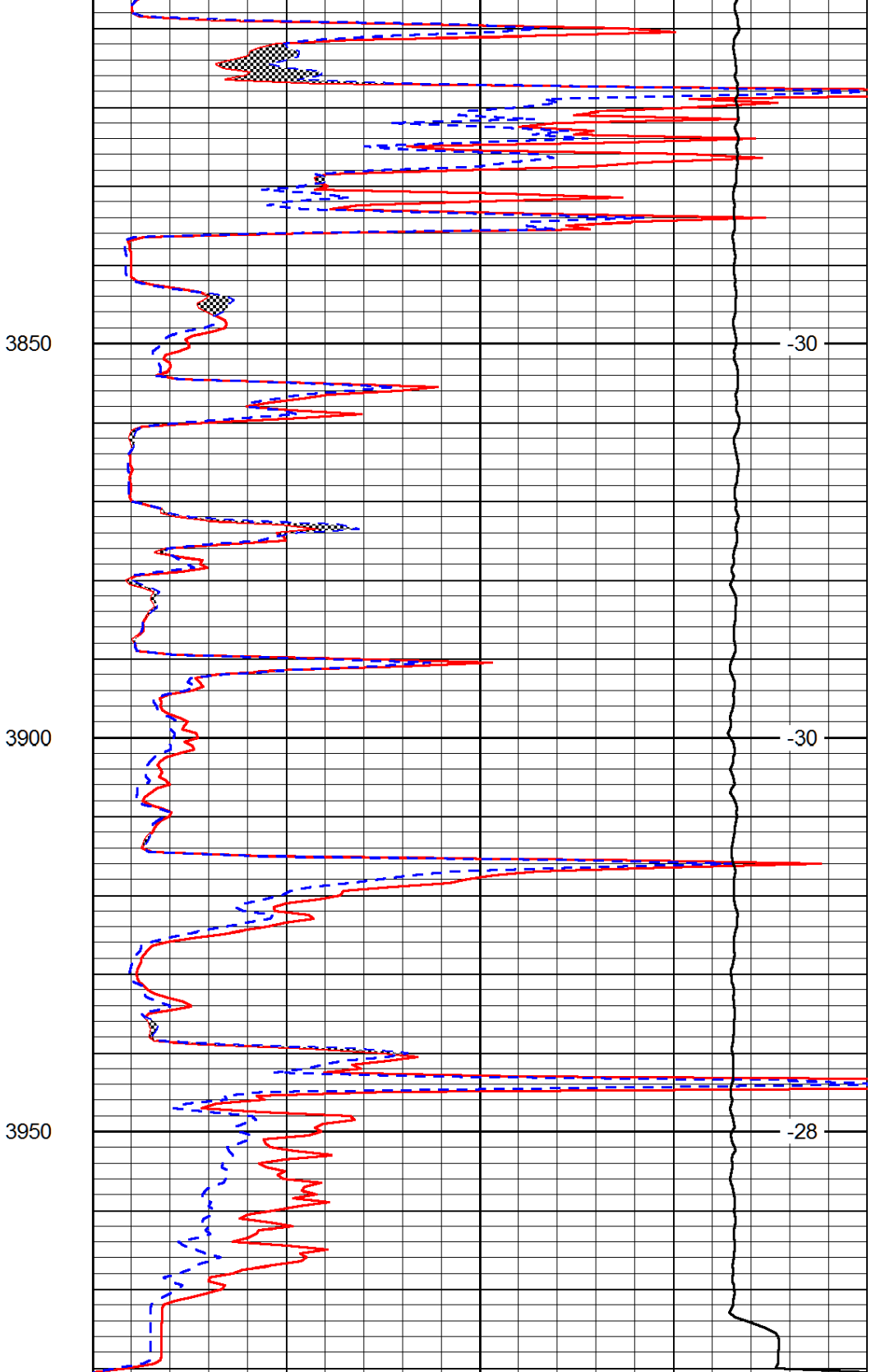
-31

-30

-30



0	Gamma Ray (GAPI)	150
6	MCAL (in)	16
2.875	Mud Cake (in)	7.875
-200	SP (mV)	0



0	Micro Inverse 1 X 1 (Ohm-m)	40
0	Micro Normal 2" (Ohm-m)	40
10000	Line Weight (lb)	0

LSPD
(ft/min)