



Pioneer Energy Services

Microresistivity Log

15-051-26,535-00-00

API No.

Company **Cla-Mar Oil Company**

Well **Schumacher #2**

Field **Pleasant Northwest**

County **Ellis** State **Kansas**

Location **SW SE NW NW/4
1310' FNL & 705' FWL**

Sec: **21** Twp: **13S** Rge: **20W**

Other Services
CNL/CDL
DIL

Permanent Datum **Ground Level** Elevation **2214**

Log Measured From **Kelly Bushing** 7 Ft. Above Perm. Datum

Elevation
K.B. 2221
D.F. 2214
G.L. 2214

Date	6/2/2013	
Run Number	Two	
Depth Driller	3930	
Depth Logger	3929	
Bottom Logged Interval	3928	
Top Log Interval	3150	
Casing Driller	8.625 @ 222	
Casing Logger	217	
Bit Size	7.875	
Type Fluid in Hole	Chemical	
Salinity,ppm CL	6000	
Density / Viscosity	9.2 53	
pH / Fluid Loss	9.5 9.6	
Source of Sample	Flowline	
Rm @ Meas. Temp	0.56 @ 81	
Rmf @ Meas. Temp	0.42 @ 81	
Rmc @ Meas. Temp	0.76 @ 81	
Source of Rmf / Rmc	Charts	
Rm @ BHT	0.39 @ 115	
Operating Rig Time	4 Hours	
Max Rec. Temp. F	115	
Equipment Number	10	
Location	Hays	
Recorded By	D.Kerr	
Witnessed By	Roger Fisher	Jim Clark

<<< Fold Here >>>

All interpretations are opinions based on inferences from electrical or other measurements and we cannot and do not guarantee the accuracy or correctness of any interpretation, and we shall not, except in the case of gross or willful negligence on our part, be liable or responsible for any loss, costs, damages, or expenses incurred or sustained by anyone resulting from any interpretation made by any of our officers, agents or employees. These interpretations are also subject to our general terms and conditions set out in our current Price Schedule.

Comments

Thank you for using Pioneer Energy Services
www.pioneerenergy.com
785 625 3858

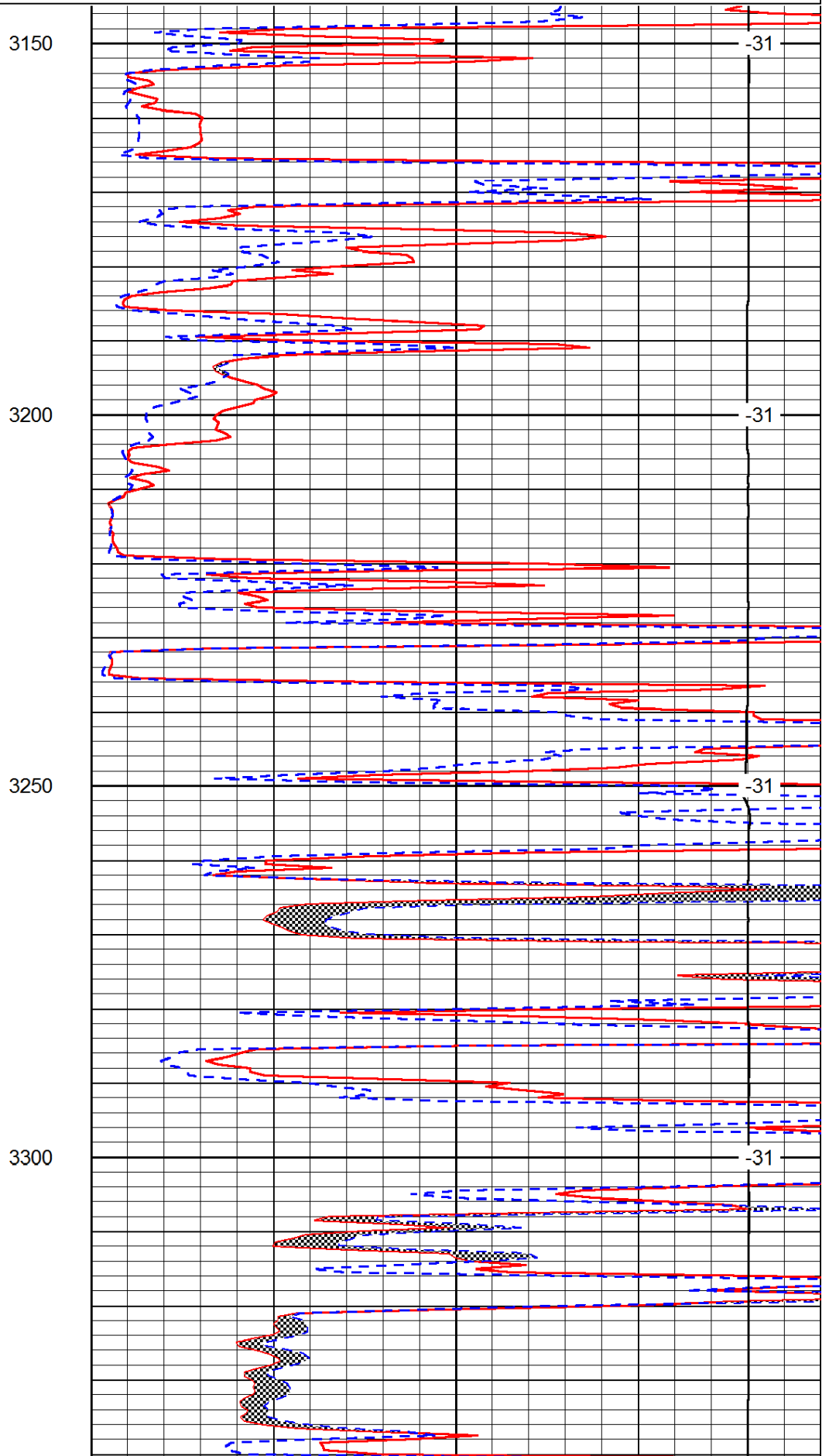
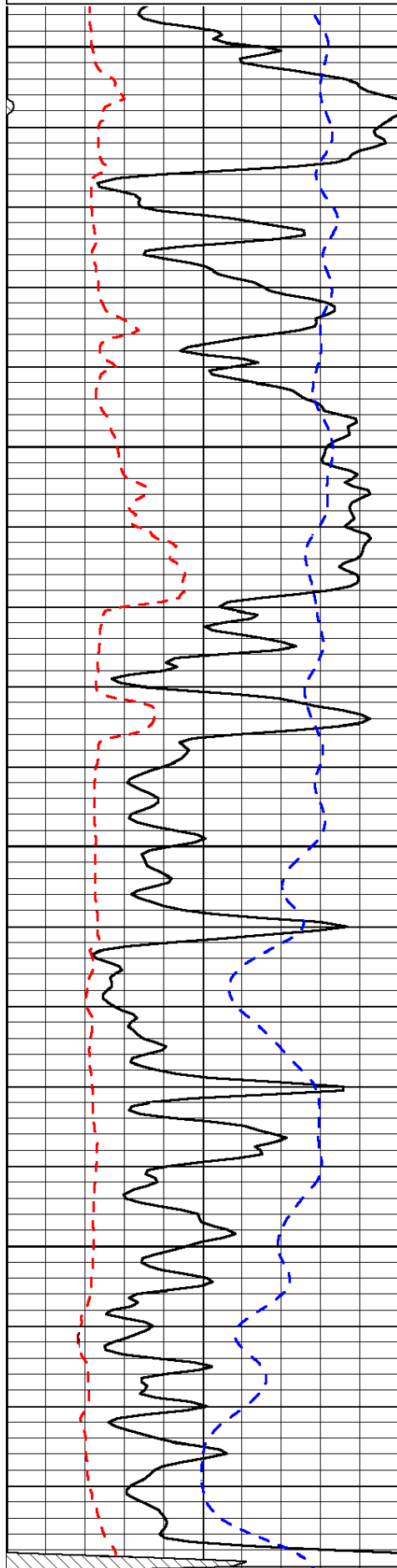
Ellis KS, 1 1/4 South, East Into

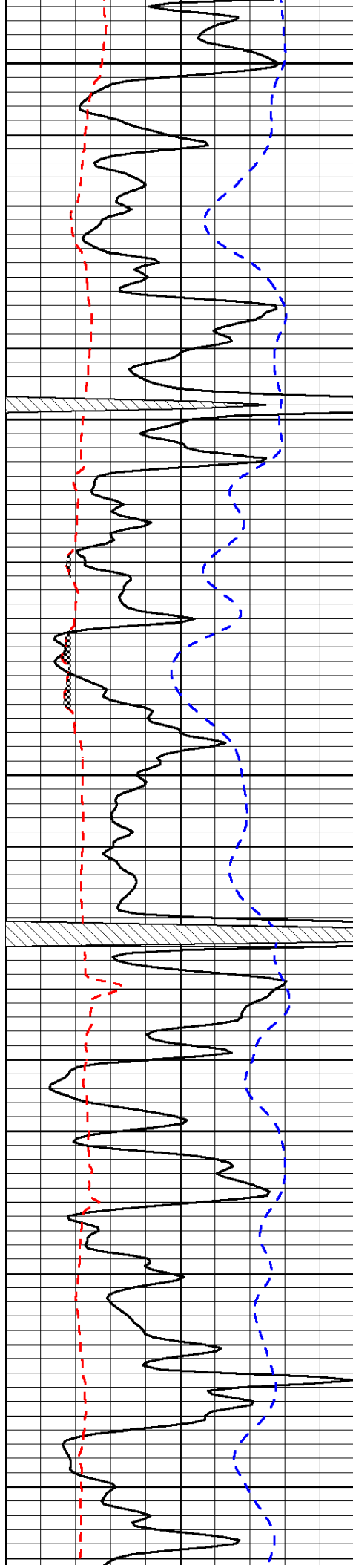
Database File: c:\warrior\data\cla-mar_schumacher #2\clamar_schumacher_2hd.db
 Dataset Pathname: DIL/clastk
 Presentation Format: micro
 Dataset Creation: Mon Jun 03 01:18:15 2013
 Charted by: Depth in Feet scaled 1:240

0	Gamma Ray	150
6	Micro Log Caliper (GAPI)	16
-200	SP (mV)	0

0	Micro Inverse 1 X 1	40
0	Micro Normal 2"	40
15000	Line Weight	0

LSPD





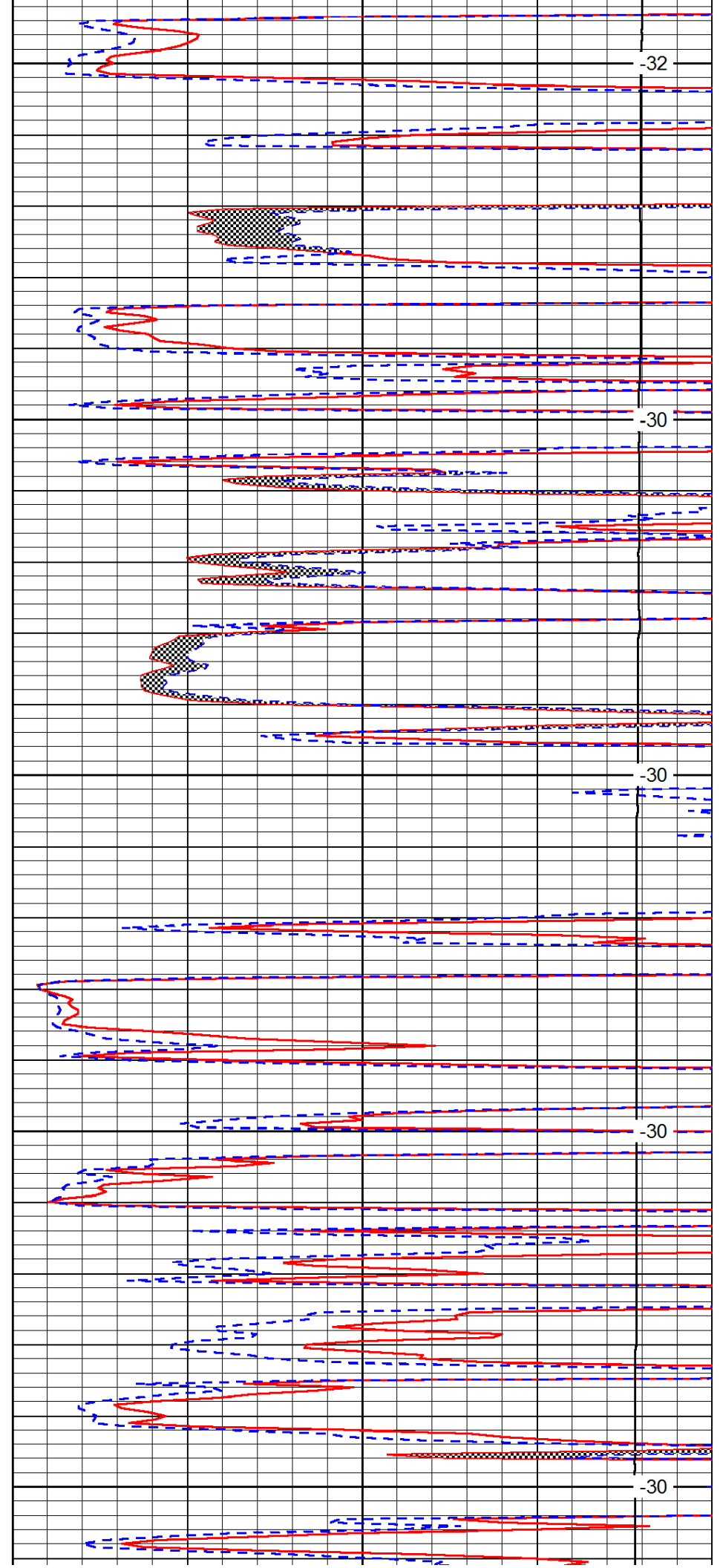
3350

3400

3450

3500

3550



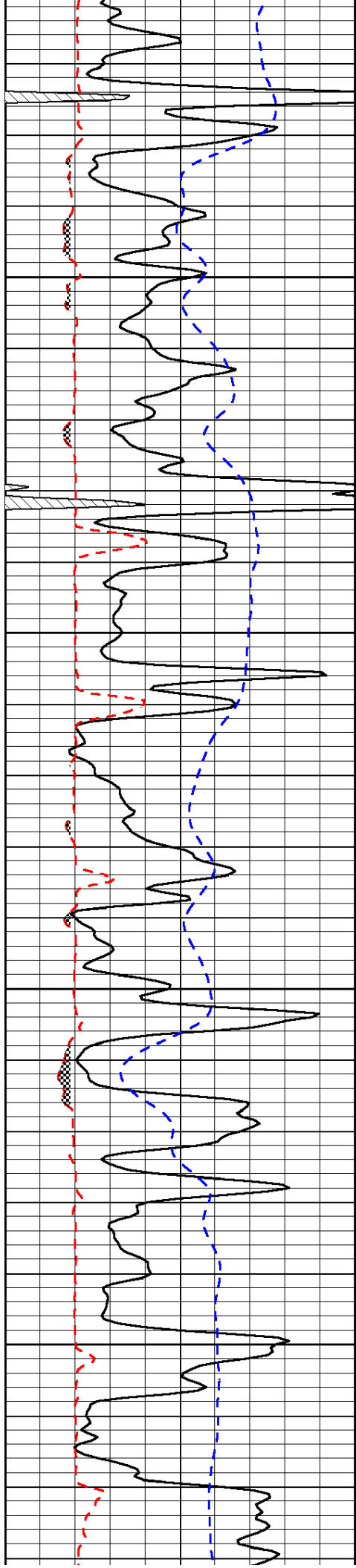
-32

-30

-30

-30

-30

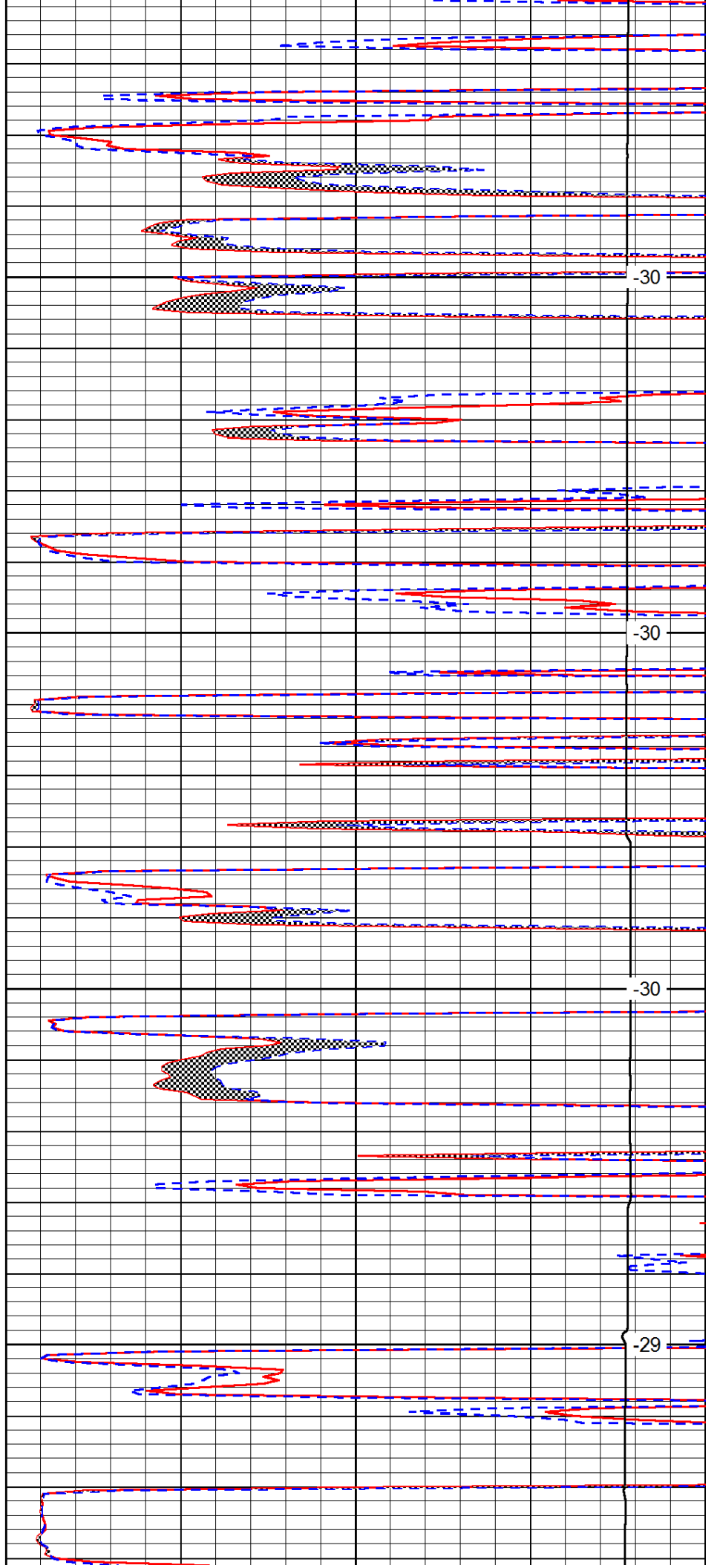


3600

3650

3700

3750

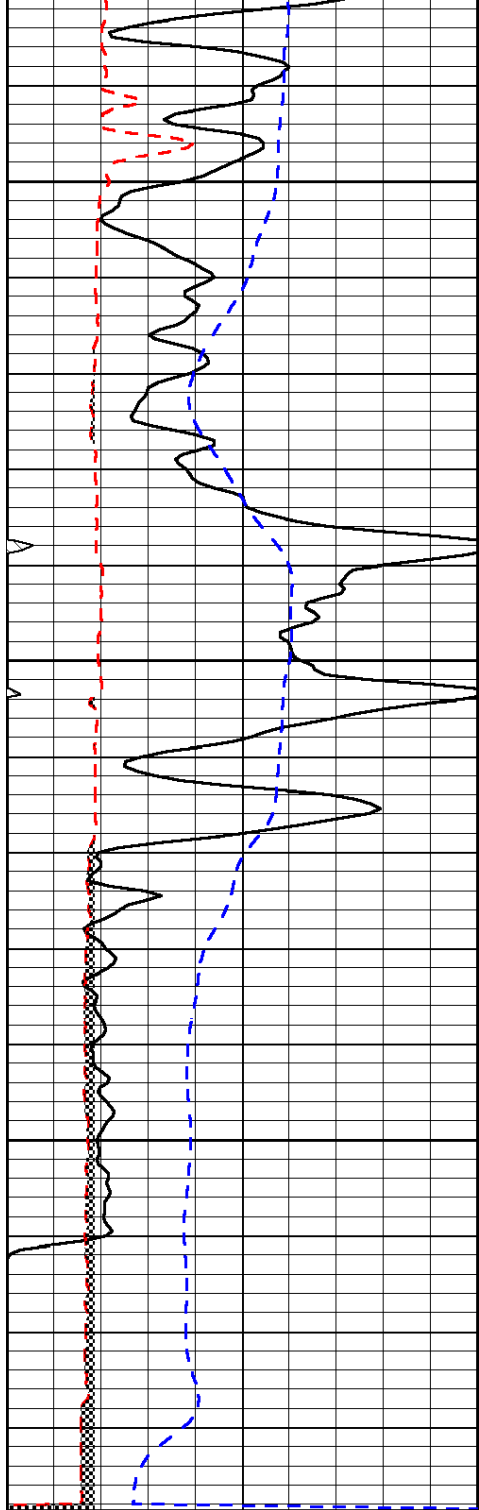


-30

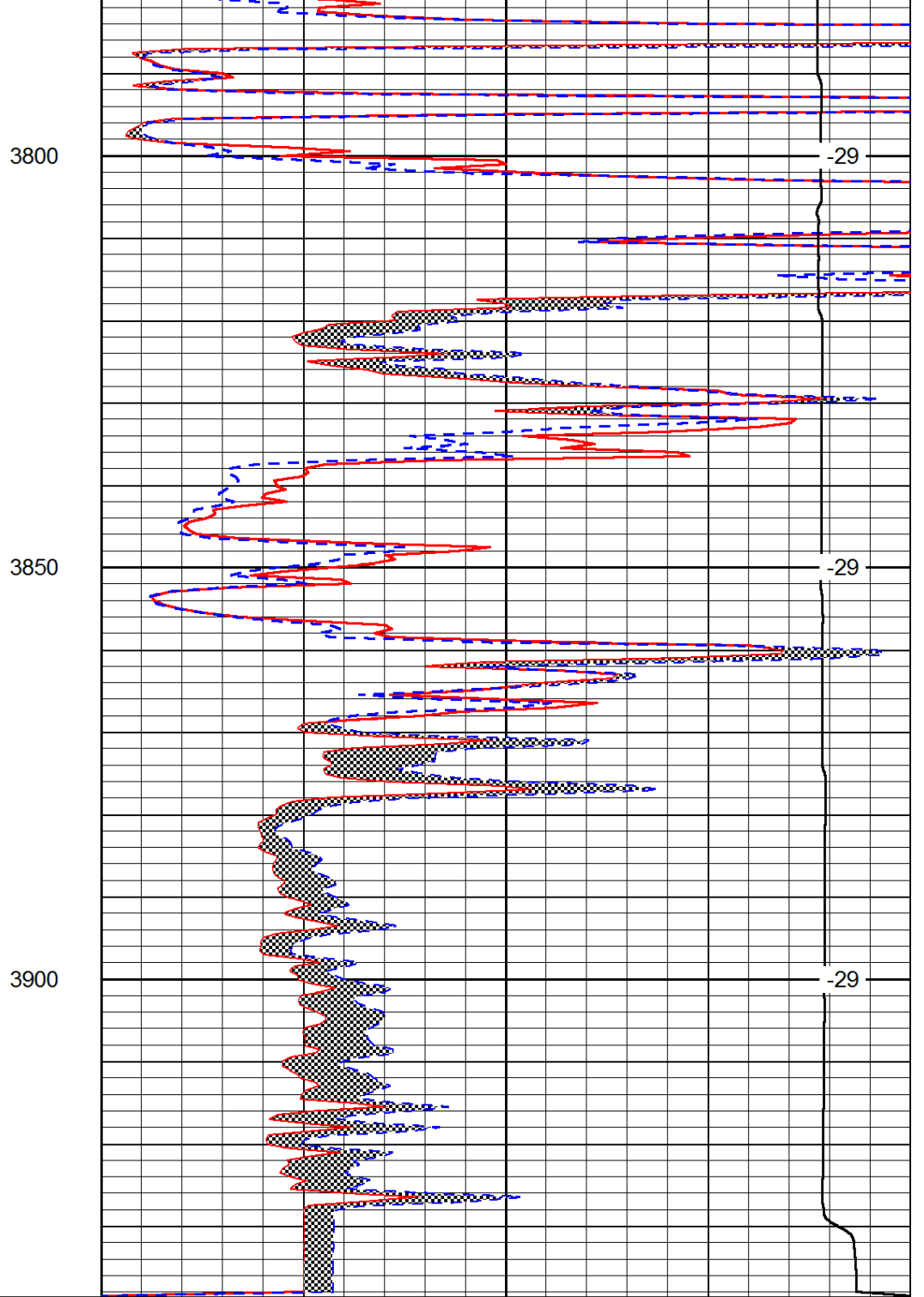
-30

-30

-29



0	Gamma Ray	150
6	Micro Log Caliper (GAPI)	16
-200	SP (mV)	0



0	Micro Inverse 1 X 1	40
0	Micro Normal 2''	40
15000	Line Weight	0

LSPD