



Pioneer Energy Services

Dual Compensated Porosity Log

15-051-26,535-00-00

API No.

Company **Cla-Mar Oil Company**
 Well **Schumacher #2**
 Field **Pleasant Northwest**
 County **Ellis** State **Kansas**

Location **SW SE NW NW/4
1310' FNL & 705' FWL**
 Sec: **21** Twp: **13S** Rge: **20W**

Permanent Datum **Ground Level** Elevation **2214**
 Log Measured From **Kelly Bushing** **7** Ft. Above Perm. Datum
 Drilling Measured From **Kelly Bushing**

Other Services
 DIL
 MEL
 Elevation
 K.B. 2221
 D.F.
 G.L. 2214

Date	6/2/2013
Run Number	One
Type Log	CNL / CDL
Depth Driller	3930
Depth Logger	3929
Bottom Logged Interval	3908
Top Logged Interval	3150
Type Fluid In Hole	Chemical
Salinity, PPM CL	6000
Density	9.2
Level	Full
Max. Rec. Temp. F	115
Operating Rig Time	4 Hours
Equipment -- Location	10 Days
Recorded By	D Kerr
Witnessed By	Roger Fisher
	Jim Clark

Borehole Record		Casing Record				
Run No.	Bit From	To	Size	Wgt.	From	To
1	12.25	00	222	8.625	24#	00
2	7.875	222	3930			222

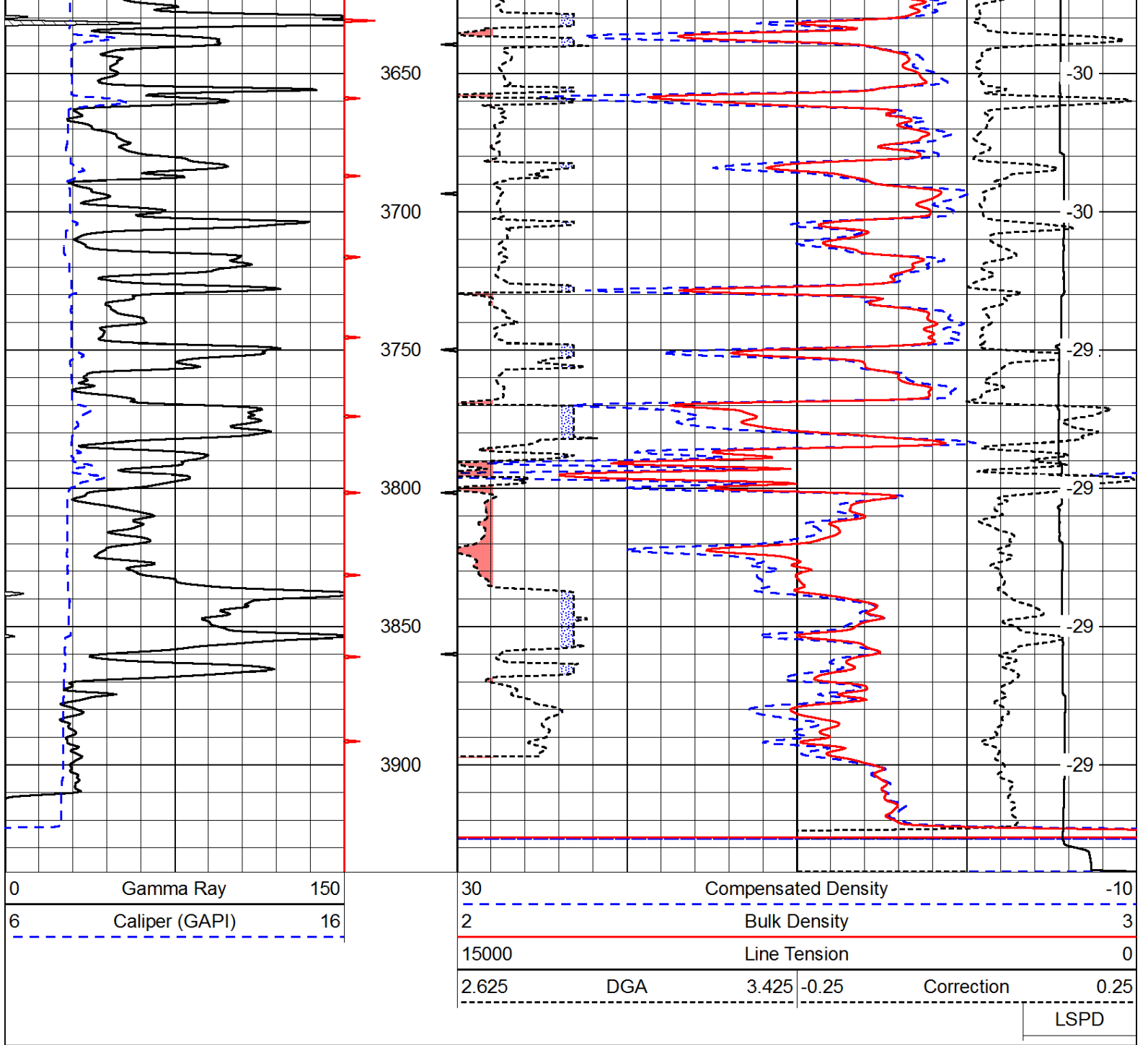
<<< Fold Here >>>

All interpretations are opinions based on inferences from electrical or other measurements and we cannot and do not guarantee the accuracy or correctness of any interpretation, and we shall not, except in the case of gross or willful negligence on our part, be liable or responsible for any loss, costs, damages, or expenses incurred or sustained by anyone resulting from any interpretation made by any of our officers, agents or employees. These interpretations are also subject to our general terms and conditions set out in our current Price Schedule.

Comments

Thank you for using Pioneer Energy Services
www.pioneerenergy.com
 785 625 3858
 Ellis KS, 1 1/4 South, East Into

Database File: c:\warrior\data\cla-mar_schumacher #2\clamar_schumacher_2hd.db
 Dataset Pathname: DIL/clastk
 Presentation Format: cdl
 Dataset Creation: Mon Jun 03 01:18:15 2013
 Charted by: Depth in Feet scaled 1:600



Database File: c:\warrior\data\cla-mar_schumacher #2\clamar_schumacher_2hd.db
 Dataset Pathname: DIL/clastk
 Presentation Format: cndlspec
 Dataset Creation: Mon Jun 03 01:18:15 2013
 Charted by: Depth in Feet scaled 1:240

