



**COMPLETION  
& PRODUCTION  
SERVICES CO.**

**DUAL  
INDUCTION  
LOG**

Company BRINKER ENTERPRISES, LLC  
Well KNIPP SW #36-1  
Field WILDCAT  
County ROOKS State KANSAS

Company BRINKER ENTERPRISES, LLC  
Well KNIPP SW #36-1  
Field WILDCAT  
County ROOKS  
State KANSAS

Location: API #: 15-163-24103-00-00  
NW - SW - NE - SW  
1943' FSL & 1628' FWL  
SEC 36 TWP 7S RGE 20W  
GROUND LEVEL Elevation 1925  
Log Measured From KELLY BUSHING 5' A.G.L.  
Drilling Measured From KELLY BUSHING  
Other Services  
CNL/CDL  
MICRO  
Elevation  
K.B. 1930  
D.F. 1928  
G.L. 1925

Date	3/14/13
Run Number	ONE
Depth Driller	3550
Depth Logger	3550
Bottom Logged Interval	3548
Top Log Interval	00
Casing Driller	50
Casing Logger	50
Bit Size	7.785
Type Fluid in Hole	CHEMICAL MUD
Density / Viscosity	9.2 / 49
pH / Fluid Loss	10.5 / 7.6
Source of Sample	FLOWLINE
Rim @ Meas. Temp	1.05 @ 64F
Rmf @ Meas. Temp	0.79 @ 64F
Rmc @ Meas. Temp	1.30 @ 64F
Source of Rmf / Rmc	MEASURED
Rim @ BHT	0.60 @ 112F
Time Circulation Stopped	3 HOURS
Time Logger on Bottom	
Maximum Recorded Temperature	112F
Equipment Number	860
Location	HAYS, KS.
Recorded By	IAN MABB
Witnessed By	JEFF LAWLER

<<< Fold Here >>>

All interpretations are opinions based on inferences from electrical or other measurements and we cannot and do not guarantee the accuracy or correctness of any interpretation, and we shall not, except in the case of gross or willful negligence on our part, be liable or responsible for any loss, costs, damages, or expenses incurred or sustained by anyone resulting from any interpretation made by any of our officers, agents or employees. These interpretations are also subject to our general terms and conditions set out in our current Price Schedule.

Comments

NABORS COMPLETION & PRODUCTION SERVICES  
785-628-6395  
THANK YOU FOR YOUR BUSINESS  
DIRECTIONS: STOCKTON, KS. - WEST ON HWY 24 TO RD. 6 - 3/4 SOUTH EAST INTO

0 Gamma Ray (GAPI) 150

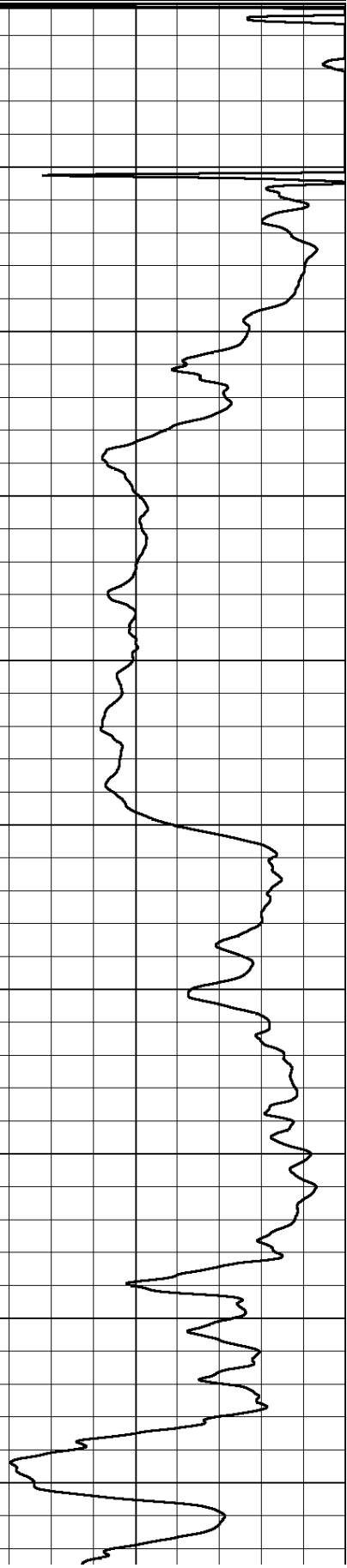
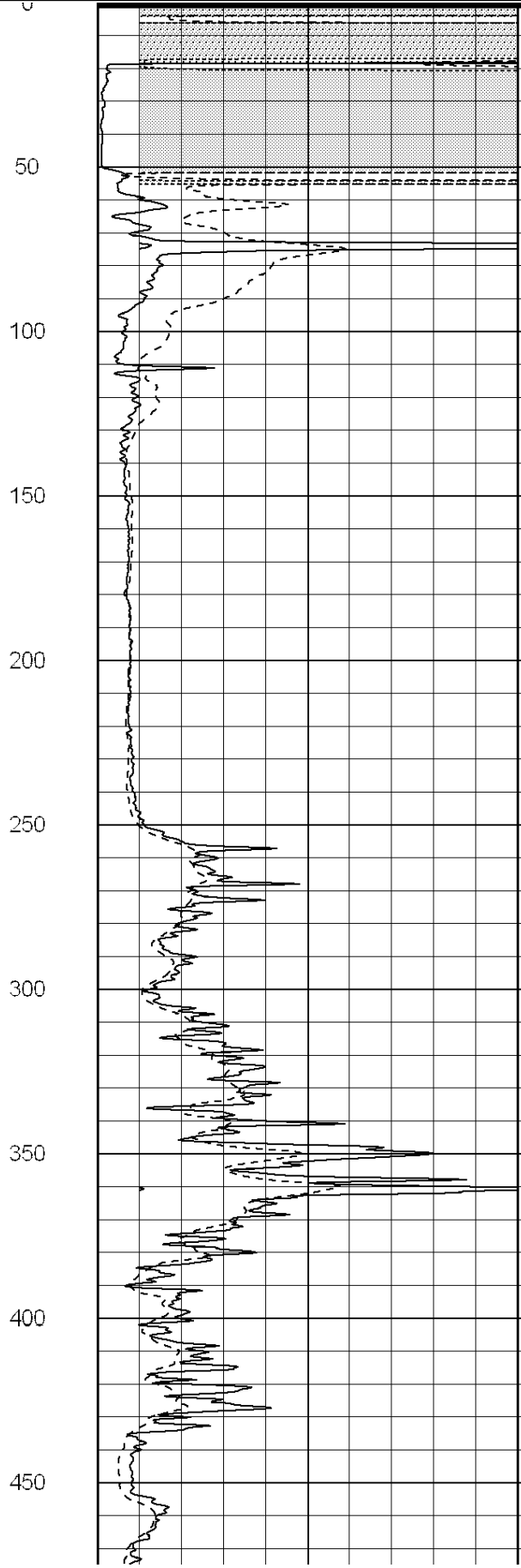
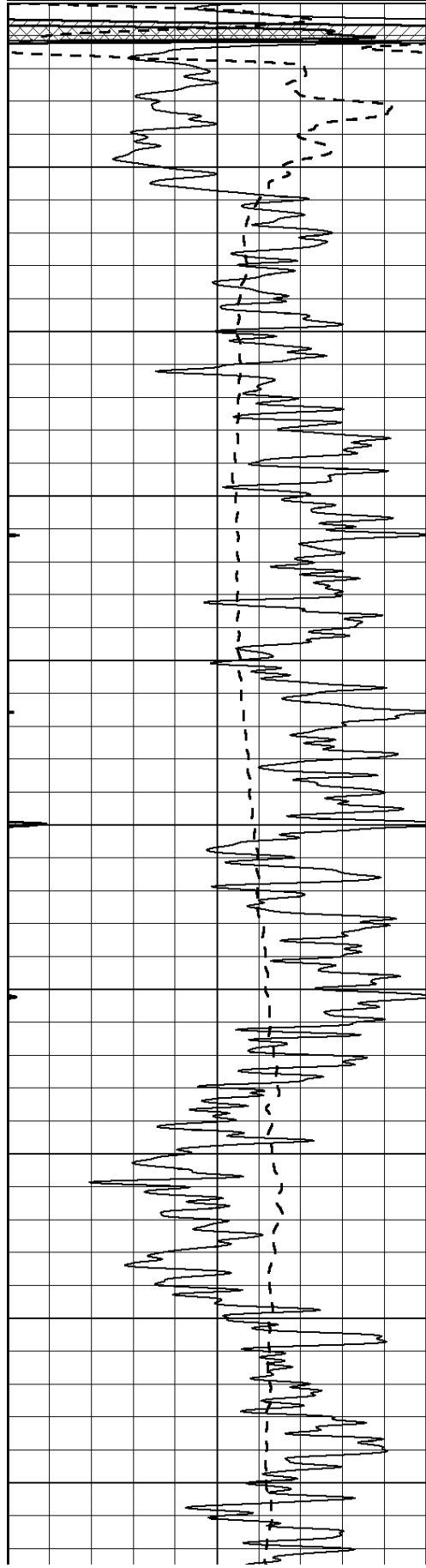
0 RLL3 (Ohm-m) 50

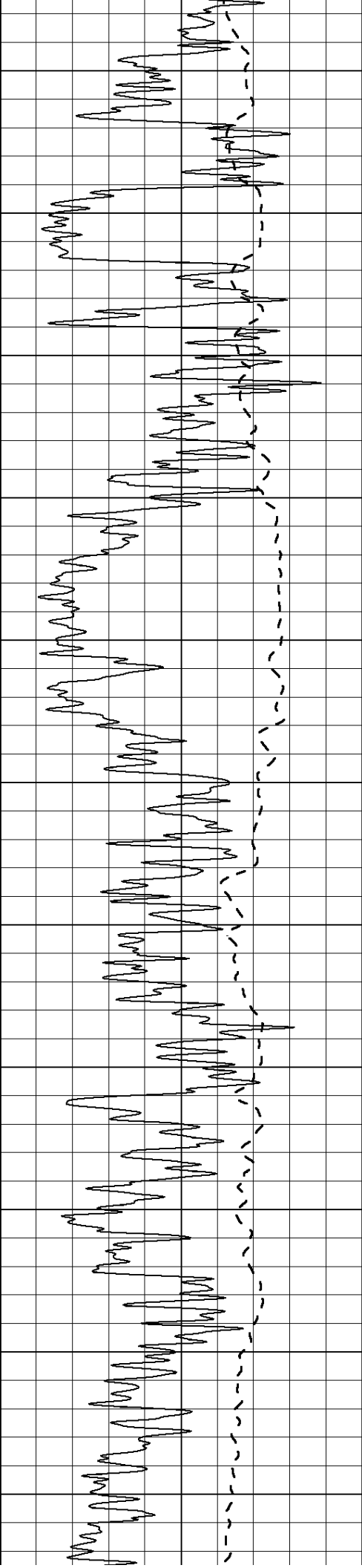
0 Deep Induction (Ohm-m) 50

1000 CILD (mmho/m) 0

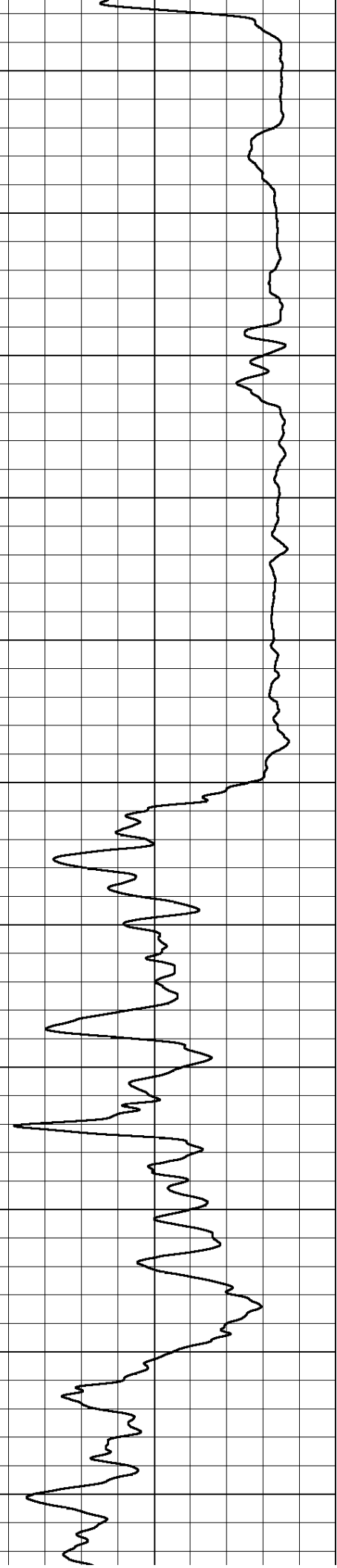
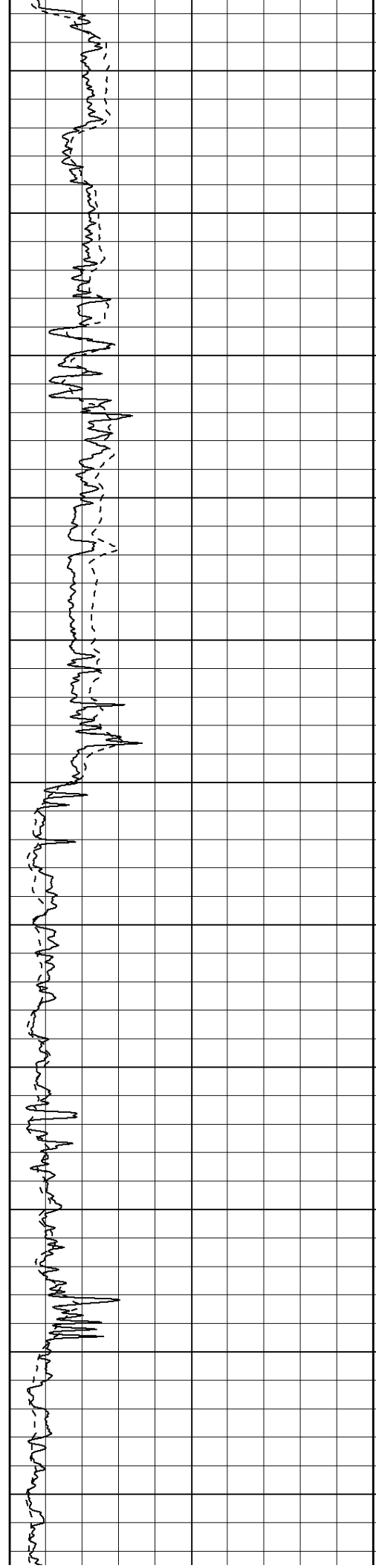
50 RILD X10 (Ohm-m) 500

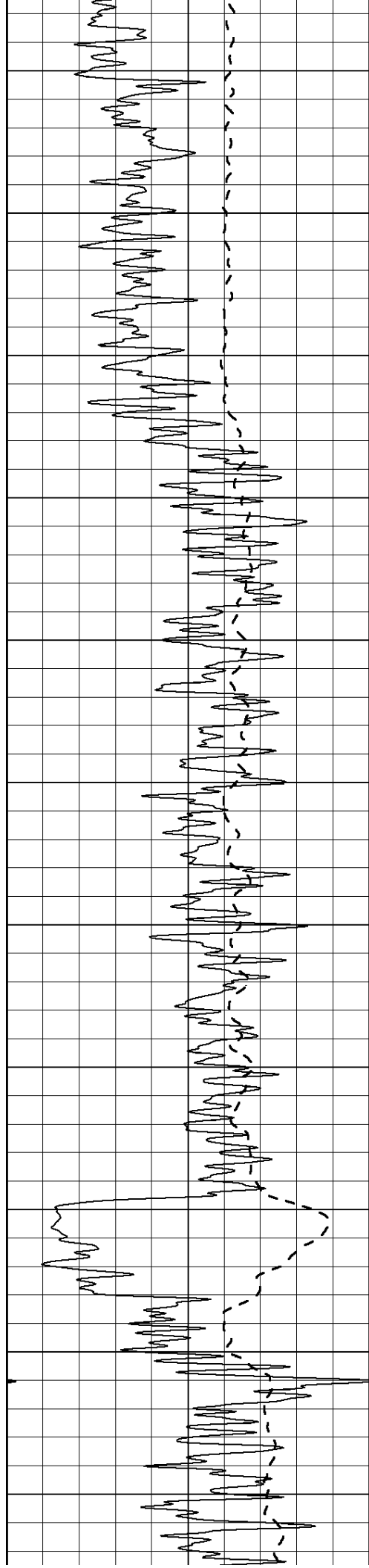
50 RLL3 X10 (Ohm-m) 500



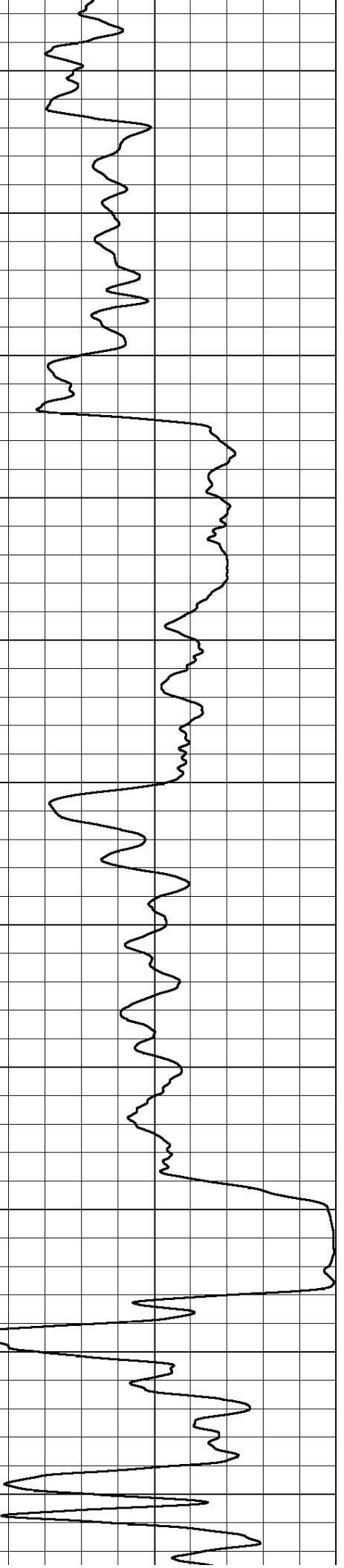
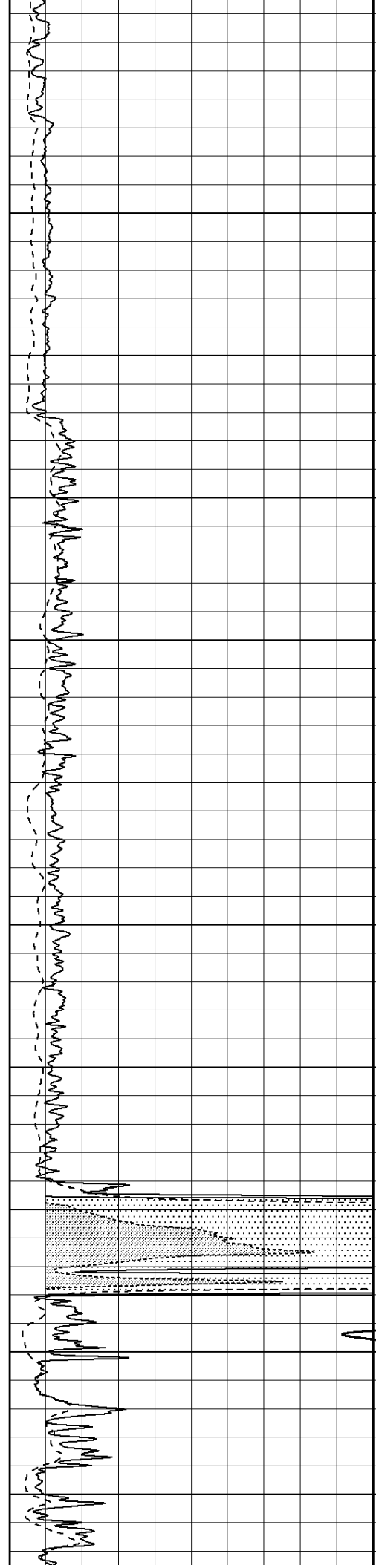


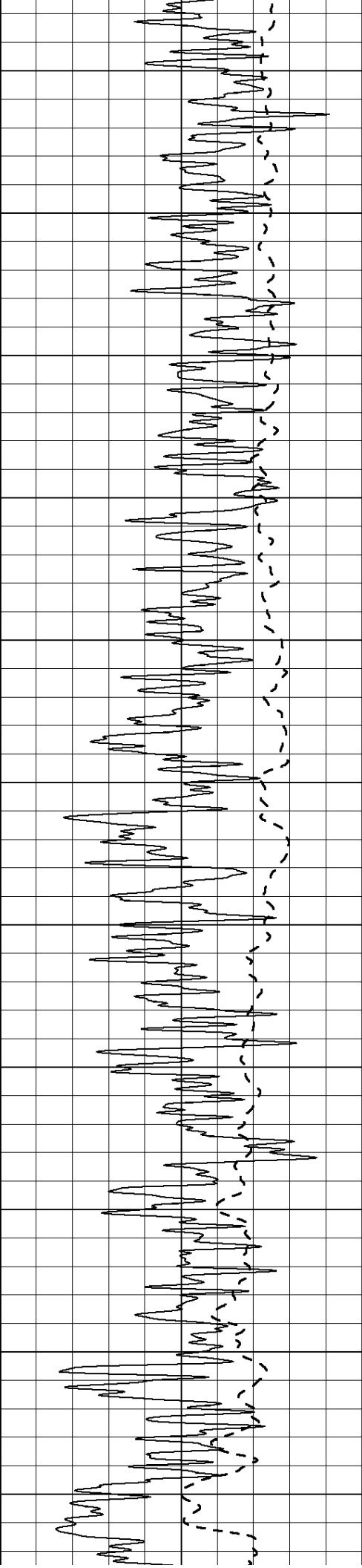
500  
550  
600  
650  
700  
750  
800  
850  
900  
950  
1000



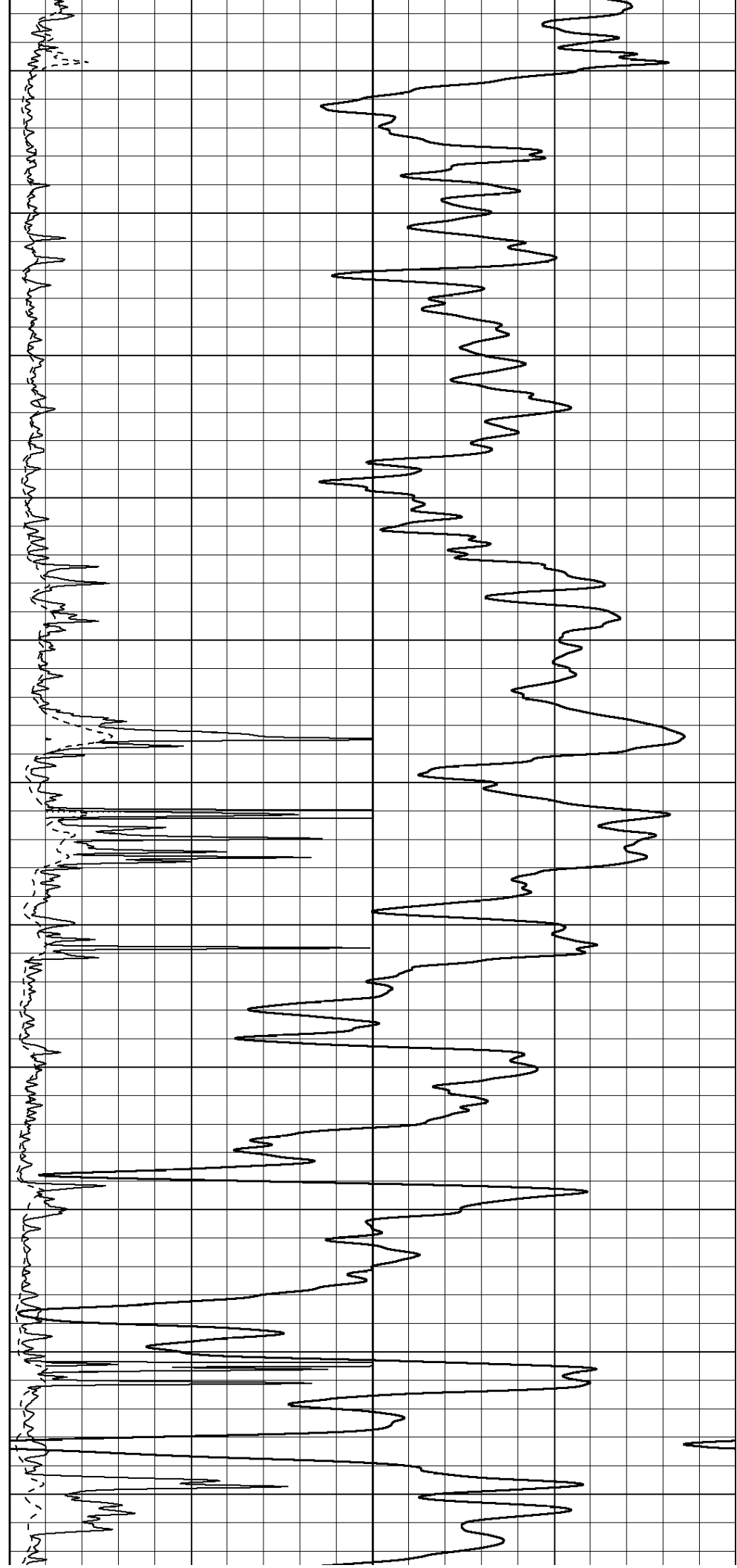


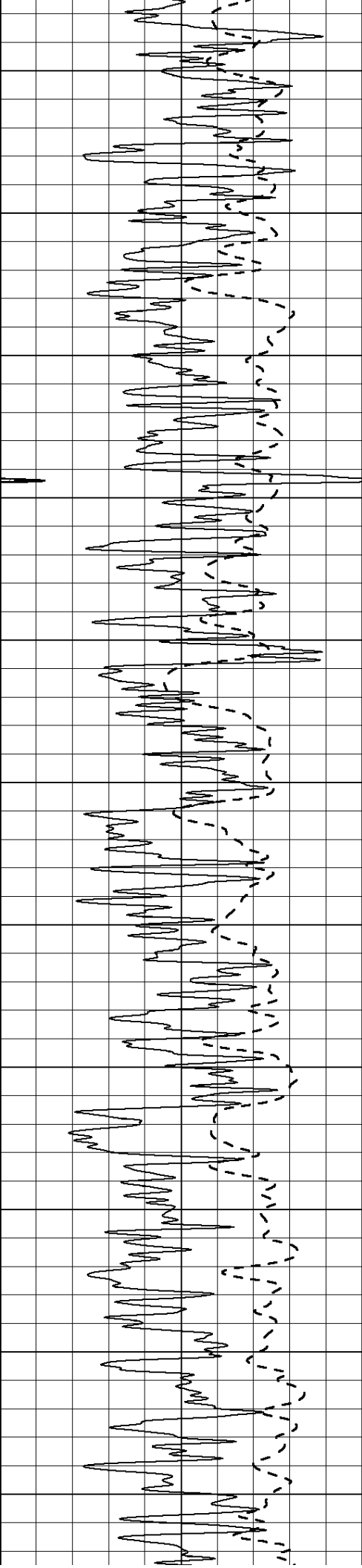
1050  
1100  
1150  
1200  
1250  
1300  
1350  
1400  
1450  
1500  
1550



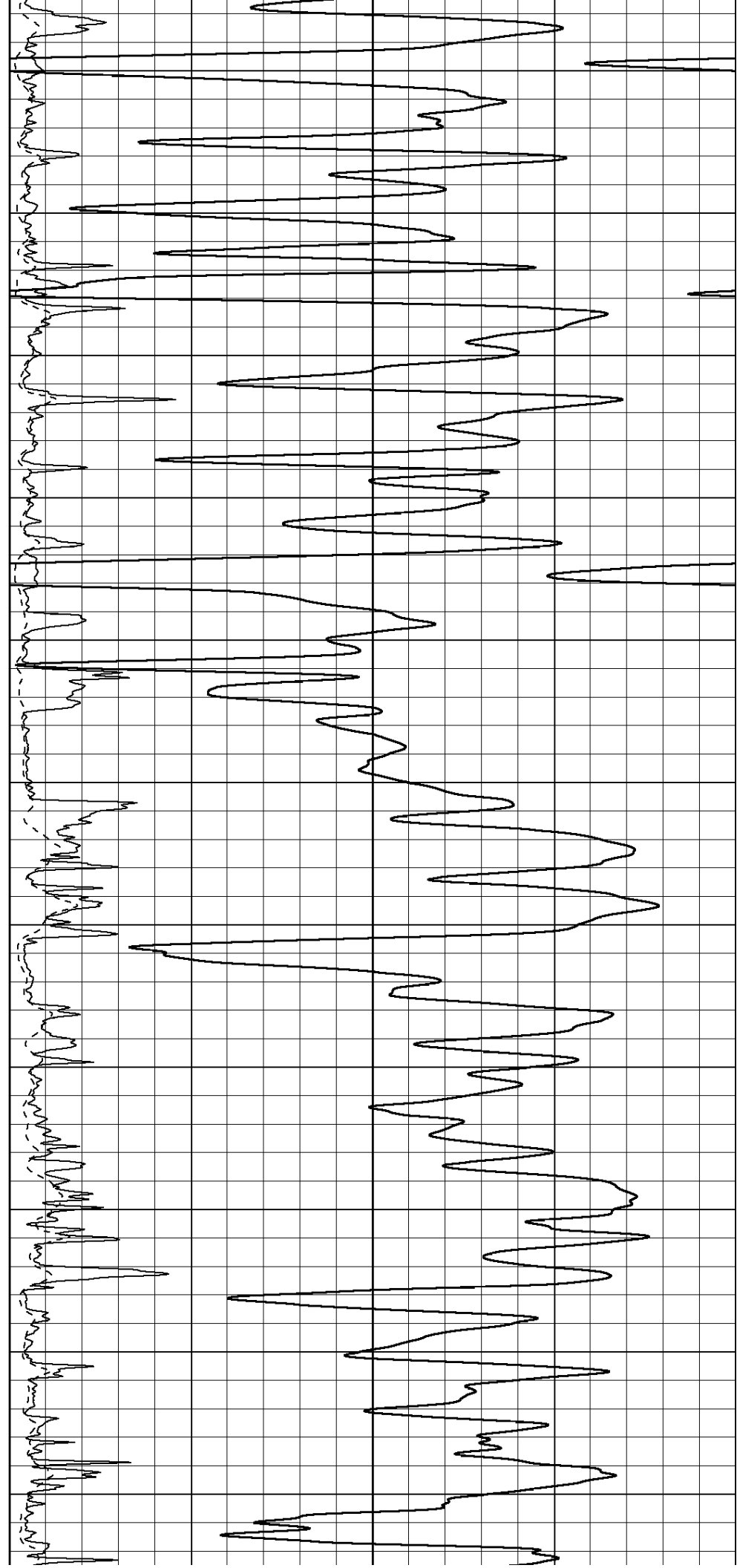


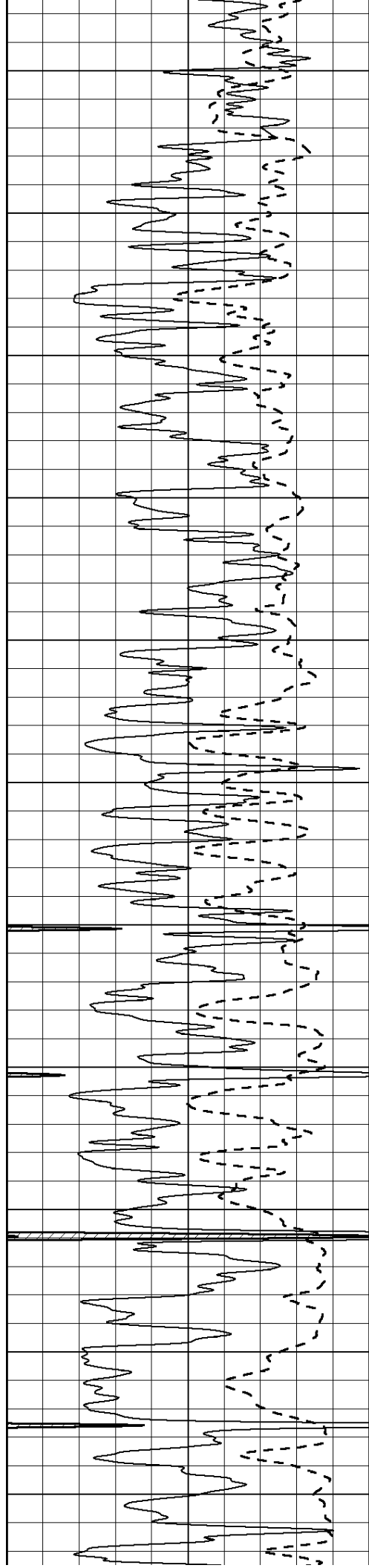
1600  
1650  
1700  
1750  
1800  
1850  
1900  
1950  
2000  
2050  
2100



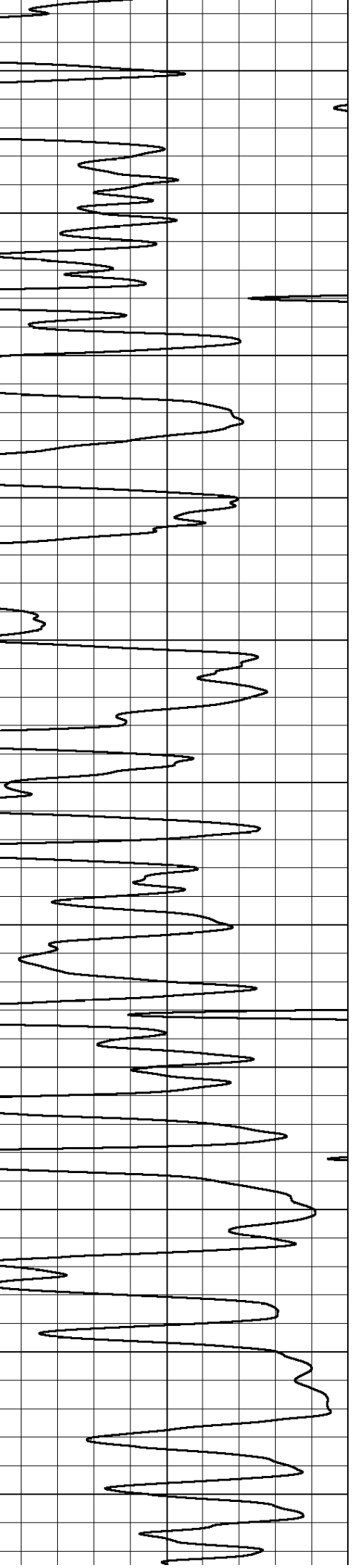
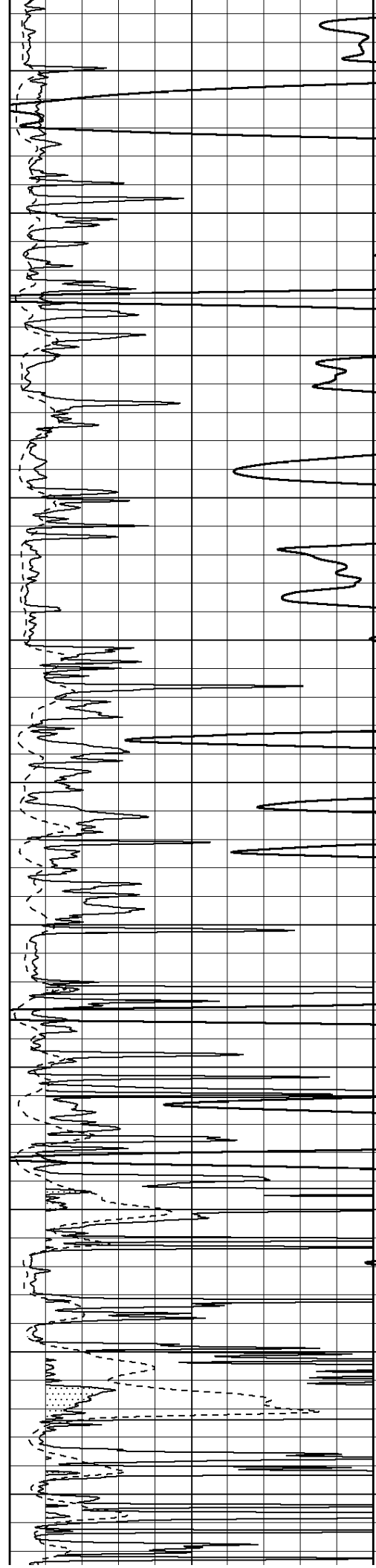


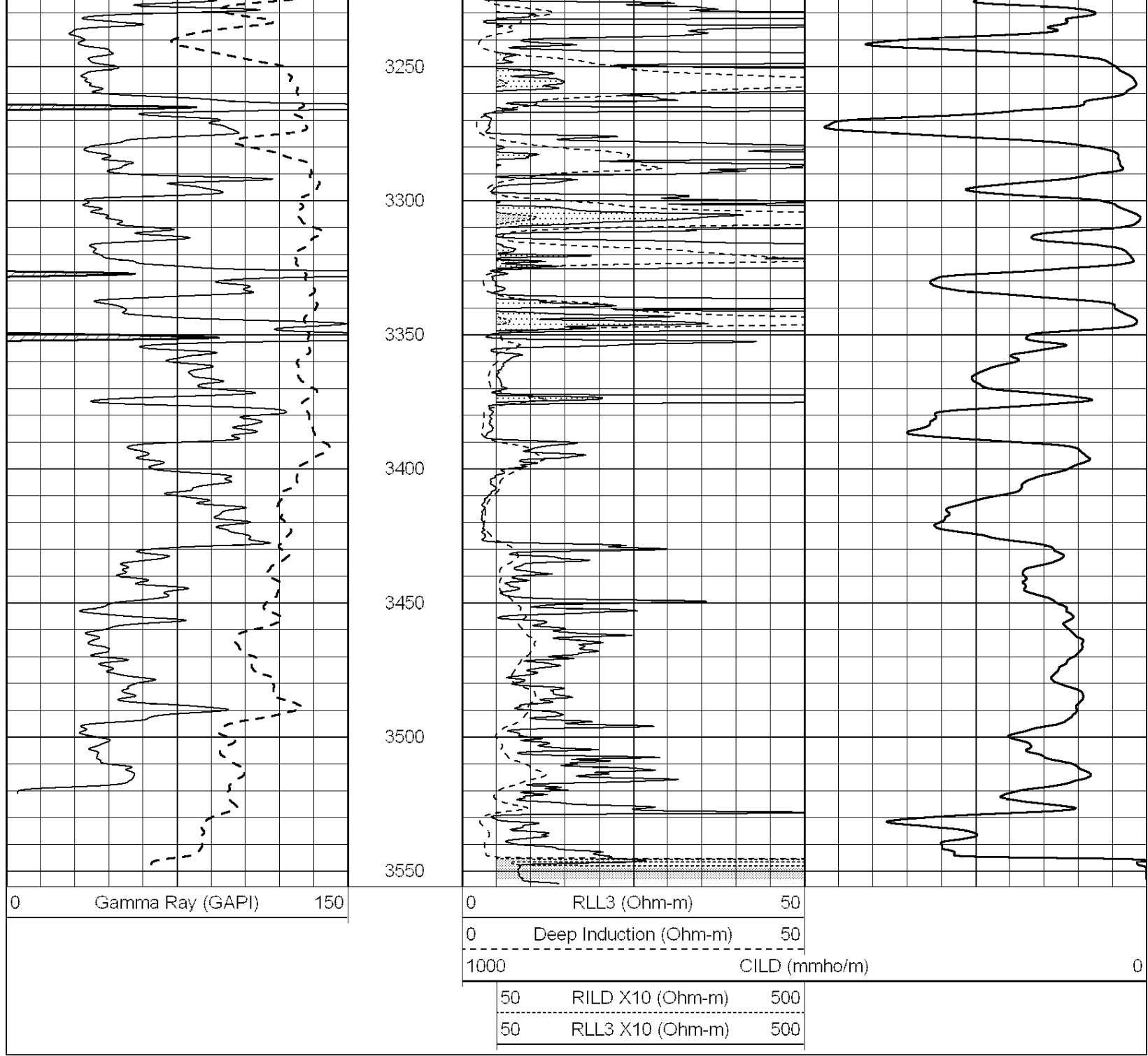
2150  
2200  
2250  
2300  
2350  
2400  
2450  
2500  
2550  
2600  
2650





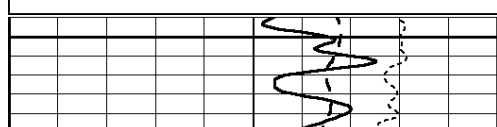
2700  
2750  
2800  
2850  
2900  
2950  
3000  
3050  
3100  
3150  
3200



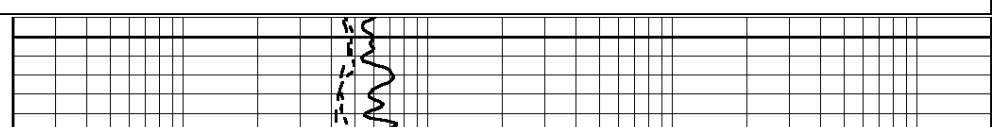


Database File: 010835ddn.db  
 Dataset Pathname: pass3.4  
 Presentation Format: dil  
 Dataset Creation: Thu Mar 14 08:40:57 2013 by Calc Open-Cased 090629  
 Charted by: Depth in Feet scaled 1:240

0	GAMMA RAY (GAPI)	150	0.2	RLL3 (Ohm-m)	2000
-100	SP (mV)	100	0.2	DEEP INDUCTION (Ohm-m)	2000
-250	RxoRt	50	0.2	MEDIUM INDUCTION (Ohm-m)	2000
0	MINMK	20			



1400

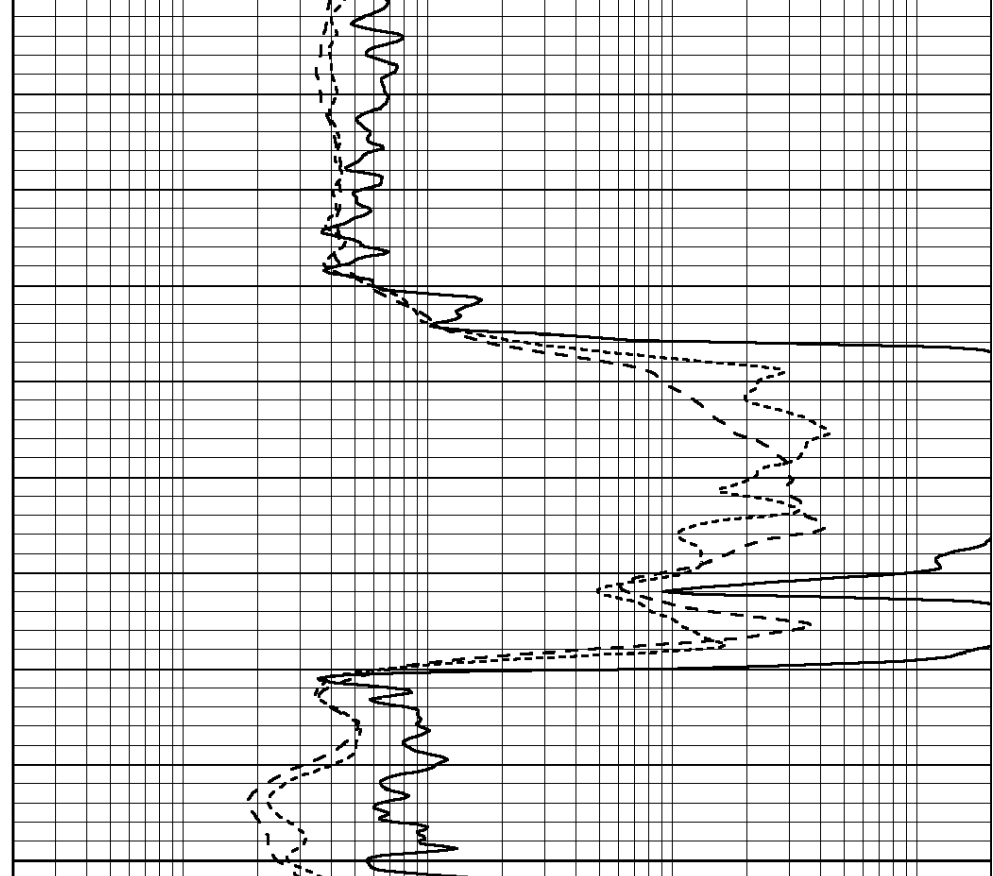




0	GAMMA RAY (GAPI)	150
-100	SP (mV)	100
-250	RxoRt	50
0	MINMK	20

1450

1500

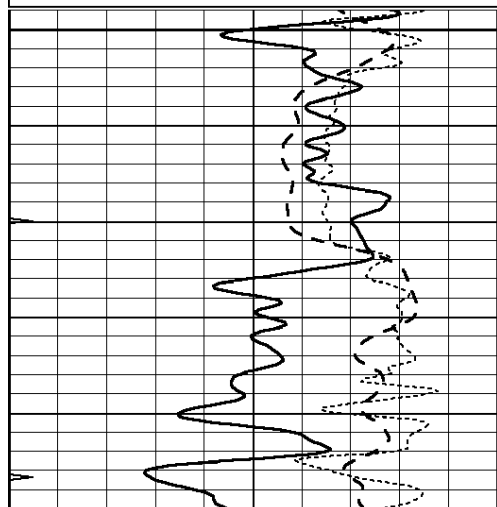


0.2	RLL3 (Ohm-m)	2000
0.2	DEEP INDUCTION (Ohm-m)	2000
0.2	MEDIUM INDUCTION (Ohm-m)	2000

Database File: 010835ddn.db  
 Dataset Pathname: pass3.3  
 Presentation Format: dil  
 Dataset Creation: Thu Mar 14 08:15:53 2013 by Calc Open-Cased 090629  
 Charted by: Depth in Feet scaled 1:240

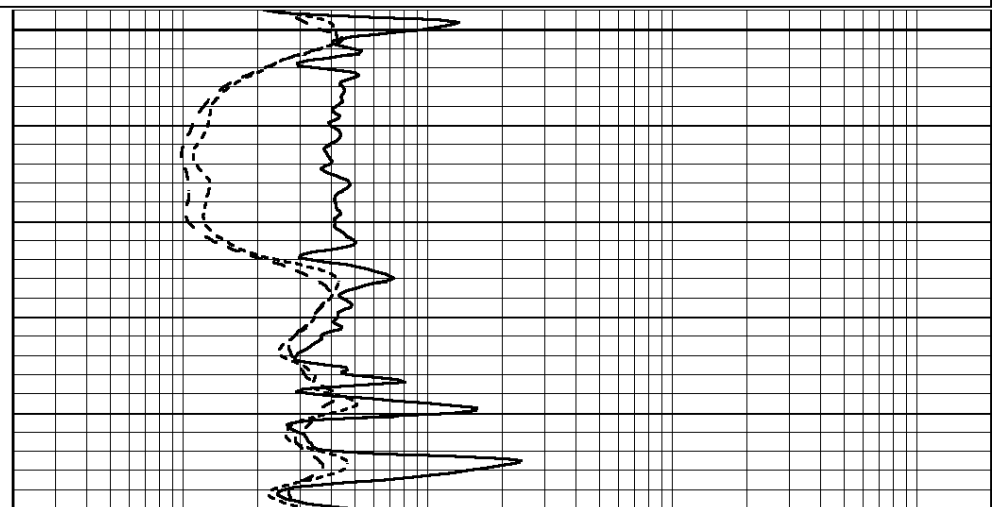
0	GAMMA RAY (GAPI)	150
-100	SP (mV)	100
-250	RxoRt	50
0	MINMK	20

0.2	RLL3 (Ohm-m)	2000
0.2	DEEP INDUCTION (Ohm-m)	2000
0.2	MEDIUM INDUCTION (Ohm-m)	2000

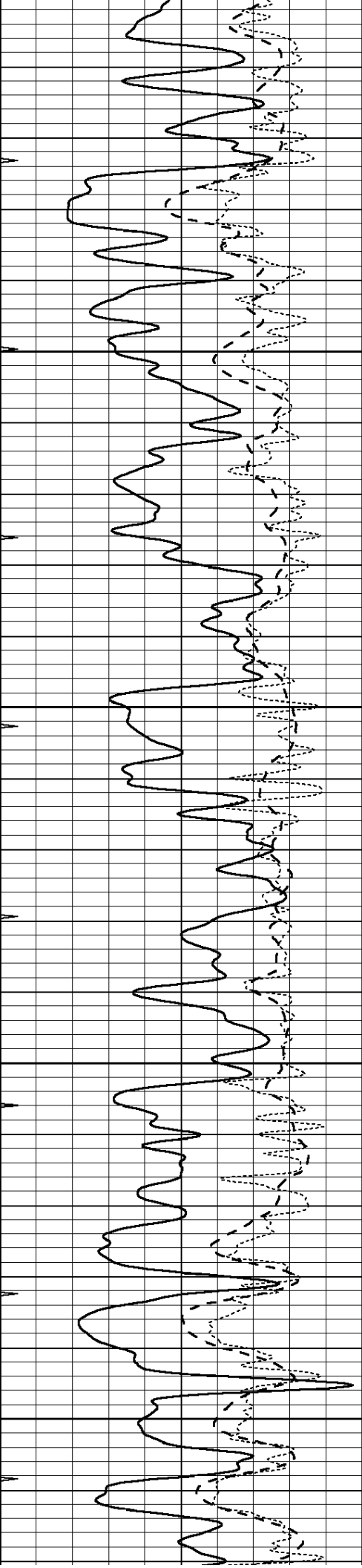


2700

2750



1733

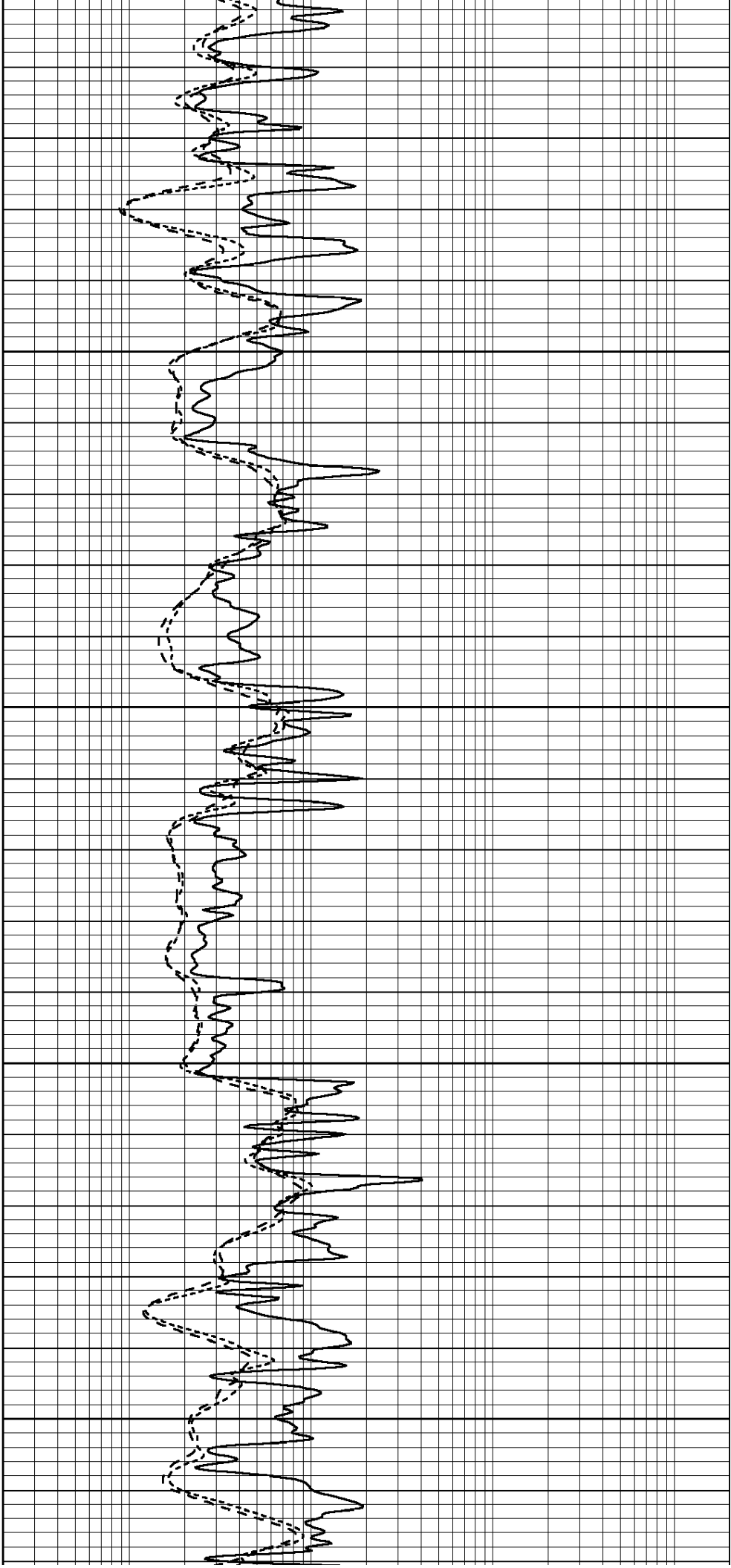


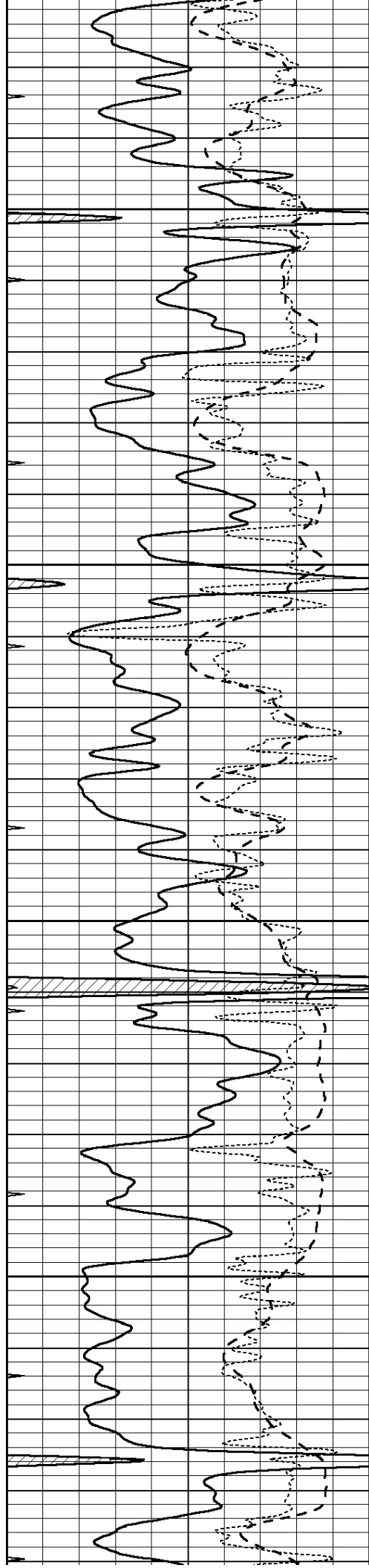
2800

2850

2900

2950



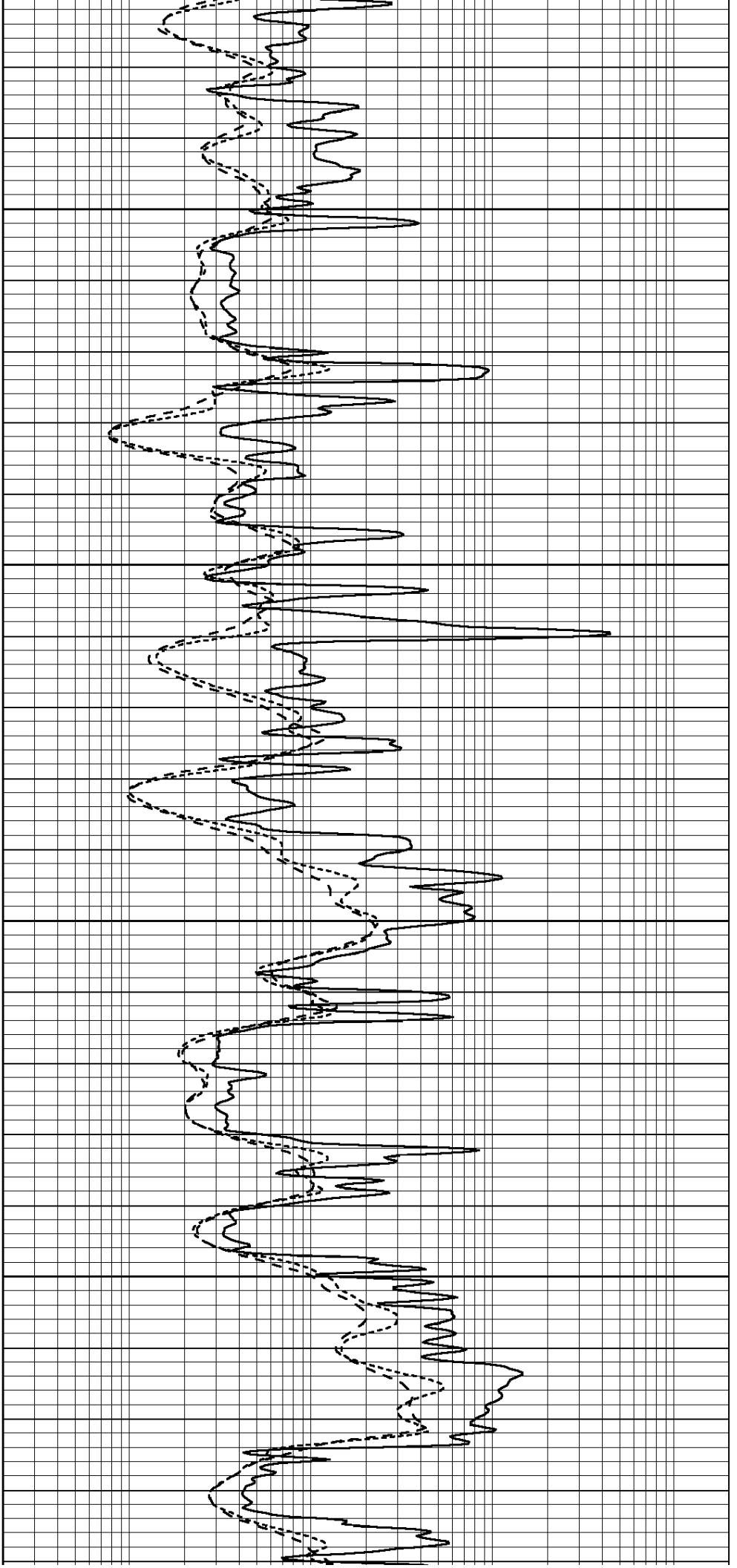


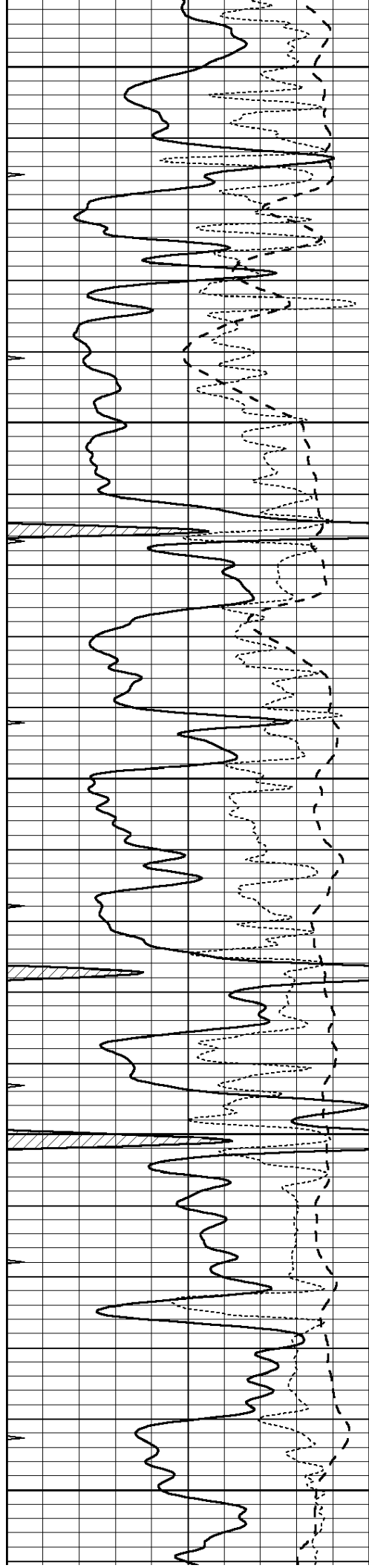
3000

3050

3100

3150





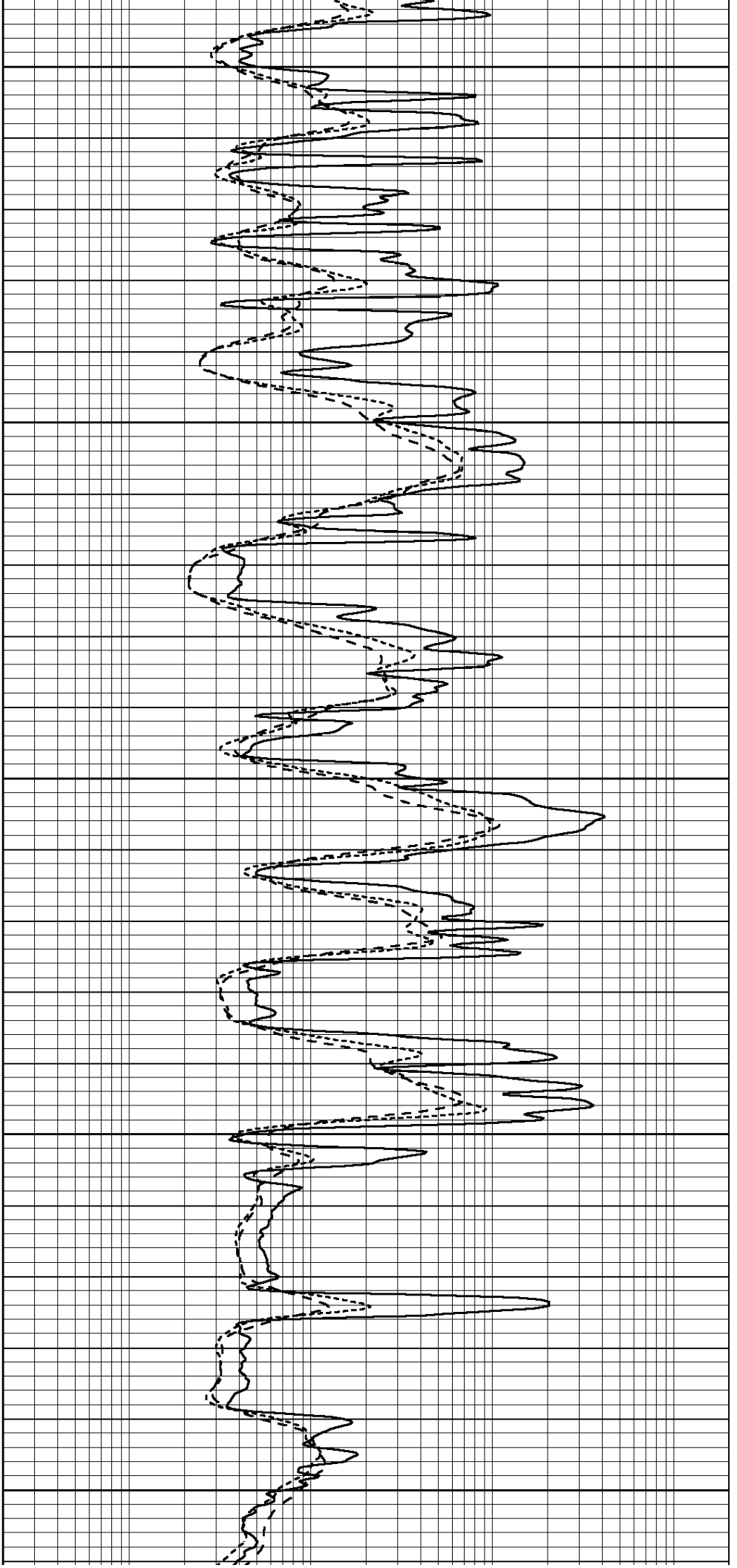
3200

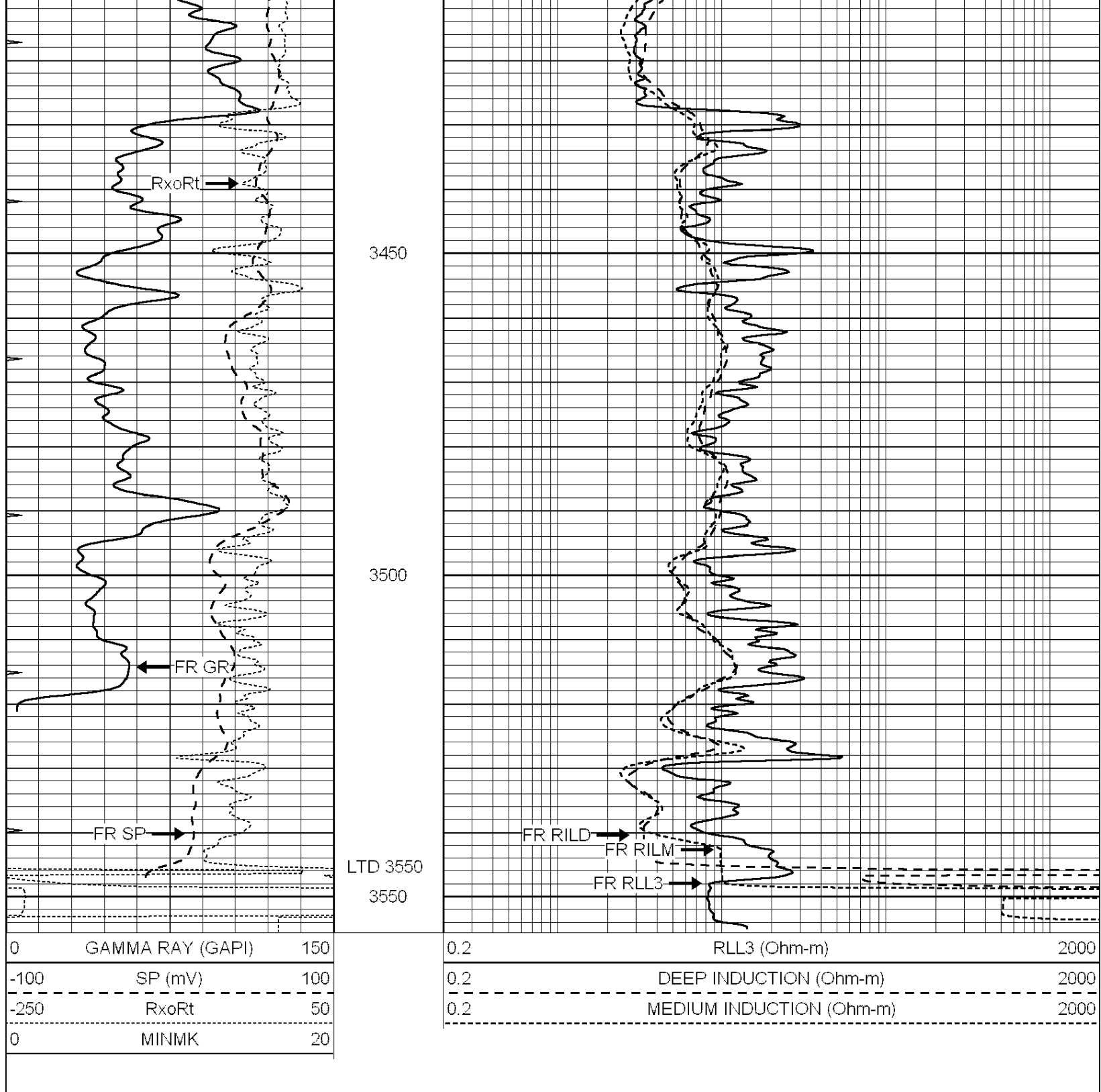
3250

3300

3350

3400





**NABORS**  
**COMPLETION & PRODUCTION SERVICES CO.**

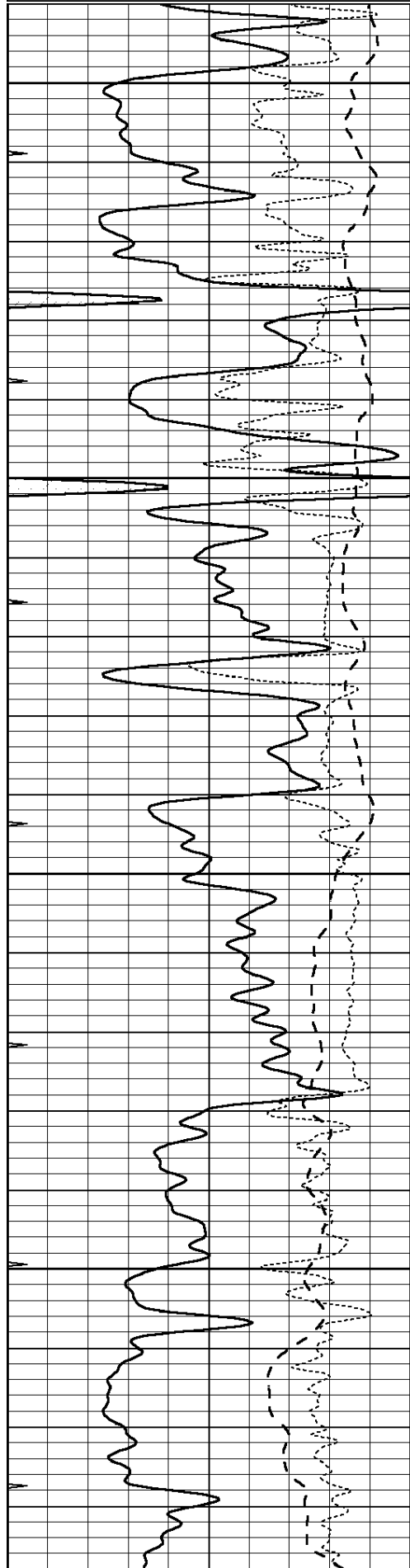
# REPEAT SECTION

Database File: 010835ddn.db  
 Dataset Pathname: pass2.8  
 Presentation Format: dil  
 Dataset Creation: Thu Mar 14 08:31:37 2013 by Calc Open-Cased 090629  
 Charted by: Depth in Feet scaled 1:240

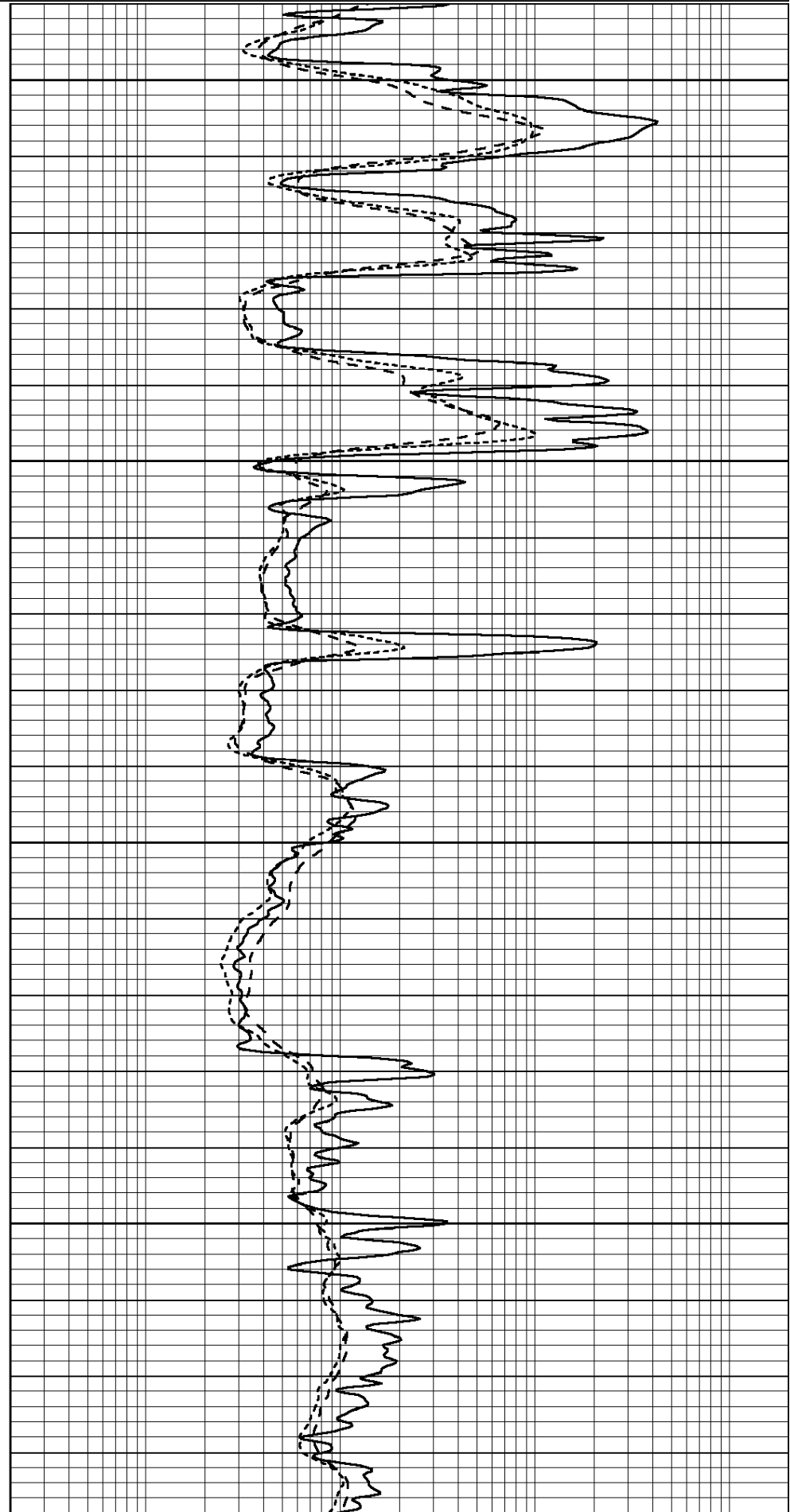


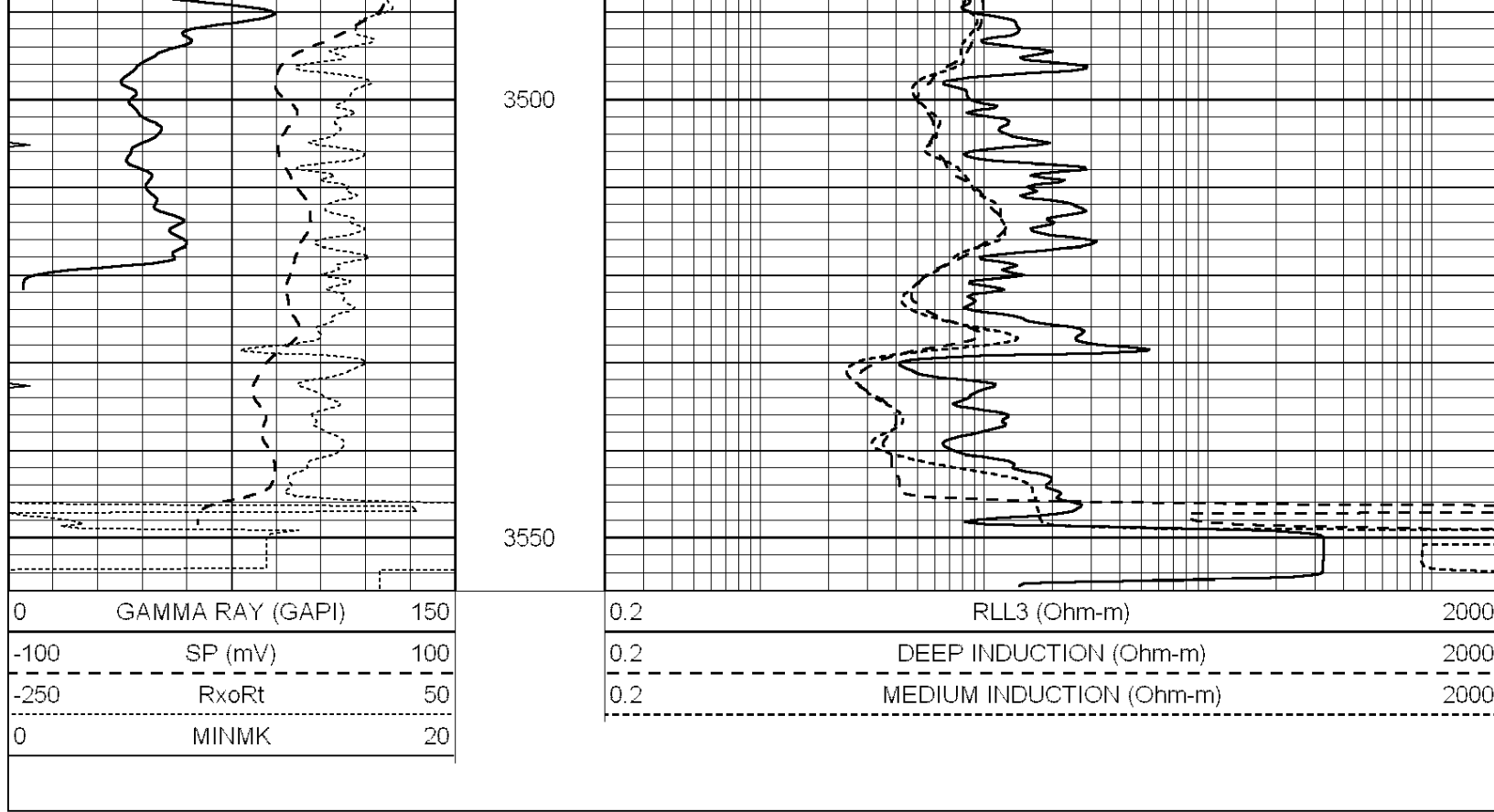
-100	SP (mV)	100
-250	RxoRt	50
0	MINMK	20

0.2	DEEP INDUCTION (Ohm-m)	2000
0.2	MEDIUM INDUCTION (Ohm-m)	2000



3300  
3350  
3400  
3450





### Calibration Report

Database File: 010835ddn.db  
 Dataset Pathname: pass3.4  
 Dataset Creation: Thu Mar 14 08:40:57 2013 by Calc Open-Cased 090629

### Dual Induction Calibration Report

Serial-Model: PROBE7-DILG  
 Surface Cal Performed: Tue Mar 05 21:11:24 2013  
 Downhole Cal Performed: Sat Jan 19 19:51:38 2013  
 After Survey Verification Performed: Sat Jan 19 19:51:38 2013

#### Surface Calibration

Loop:	Readings			References			Results	
	Air	Loop	V	Air	Loop	mmho/m	m	b
Deep	0.793	0.790	V	0.000	400.000	mmho/m	630.000	0.000
Medium	0.992	1.002	V	0.000	464.000	mmho/m	700.000	-46.000
Internal:	Zero	Cal		Zero	Cal		m	b
Deep	0.041	0.642	V	0.000	400.000	mmho/m	664.874	-27.011
Medium	0.035	0.802	V	0.000	464.000	mmho/m	604.936	-21.367

#### Downhole Calibration

	Readings			References			Results	
	Zero	Cal	V	Zero	Cal	mmho/m	m'	b'
Deep	135384.000	27094.500	mmho/m	135400.000	27082.400	mmho/m	1.000	-19.259
Medium	-47330.100	-9381.740	mmho/m	-47327.100	-9389.280	mmho/m	1.000	-10.154
LL3		7.322	V		1400.000	Ohm-m		
		0.038	V		20.000	Ohm-m		
		-7.273	V		4000.000	mmho-m		

#### After Survey Verification

Readings	Targets	Results
----------	---------	---------

	Zero	Cal		Zero	Cal		m'	b'
Deep	0.000	0.000	mmho/m	135384.000	27094.500	mmho/m	1.000	0.000
Medium	0.000	0.000	mmho/m	-47330.100	-9381.740	mmho/m	1.000	0.000
LL3		0.000	Ohm-m		1400.000	Ohm-m		
		0.000	Ohm-m		20.000	Ohm-m		
		0.000	mmho-m		4000.000	mmho-m		

Compensated Density Calibration Report

Serial-Model: GEAR1-GEARHART  
Source / Verifier: 147 / 147  
Master Calibration Performed: Tue Mar 05 21:10:23 2013

Master Calibration

	Density		Far Detector	Near Detector	
Magnesium	1.710	g/cc	1205.77	610.74	cps
Aluminum	2.590	g/cc	271.21	419.72	cps
Spine Angle = 75.89			Density/Spine Ratio = 0.572		
	Size		Reading		
Small Ring	7.30	in	4.69	V	
Large Ring	14.00	in	6.52	V	

Compensated Neutron Calibration Report

Serial Number: NEU\_4I  
Tool Model: G

CALIBRATION

Detector	Readings	Target	Normalization
Short Space	1.00 cps	1.00 cps	1.0000
Long Space	1.00 cps	1.00 cps	1.0000

Gamma Ray Calibration Report

Serial Number: GR5  
Tool Model: OPEN  
Performed: Wed Mar 13 02:09:59 2013

Calibrator Value: 1.0 GAPI

Background Reading: 0.0 cps  
Calibrator Reading: 1.0 cps

Sensitivity: 1.9000 GAPI/cps