



**COMPLETION
& PRODUCTION
SERVICES CO.**

**COMPENSATED
DENSITY / NEUTRON
LOG**

Company BRINKER ENTERPRISES, LLC
Well KNIPP SW #36-1
Field WILDCAT
County ROOKS State KANSAS

Company BRINKER ENTERPRISES, LLC
Well KNIPP SW #36-1
Field WILDCAT
County ROOKS
State KANSAS

Location: API #: 15-163-24103-00-00
NW - SW - NE - SW
1943' FSL & 1628' FWL
SEC 36 TWP 7S RGE 20W
Permanent Datum GROUND LEVEL Elevation 1925
Log Measured From KELLY BUSHING 5' A.G.L.
Drilling Measured From KELLY BUSHING
Other Services
DIL
MICRO
Elevation
K.B. 1930
D.F. 1928
G.L. 1925

Date	3/14/13		
Run Number	ONE		
Depth Driller	3550		
Depth Logger	3550		
Bottom Logged Interval	3526		
Top Log Interval	2700		
Casing Driller	50		
Casing Logger	50		
Bit Size	7.785		
Type Fluid in Hole	CHEMICAL MUD		
Density / Viscosity	9.2 / 49		
pH / Fluid Loss	10.5 / 7.6		
Source of Sample	FLOWLINE		
Rim @ Meas. Temp	1.05 @ 64F		
Rmf @ Meas. Temp	0.79 @ 64F		
Rmc @ Meas. Temp	1.30 @ 64F		
Source of Rmf / Rmc	MEASURED		
Rim @ BHT	0.60 @ 112F		
Time Circulation Stopped	3 HOURS		
Time Logger on Bottom			
Maximum Recorded Temperature	112F		
Equipment Number	860		
Location	HAYS, KS.		
Recorded By	IAN MABB		
Witnessed By	JEFF LAWLER		

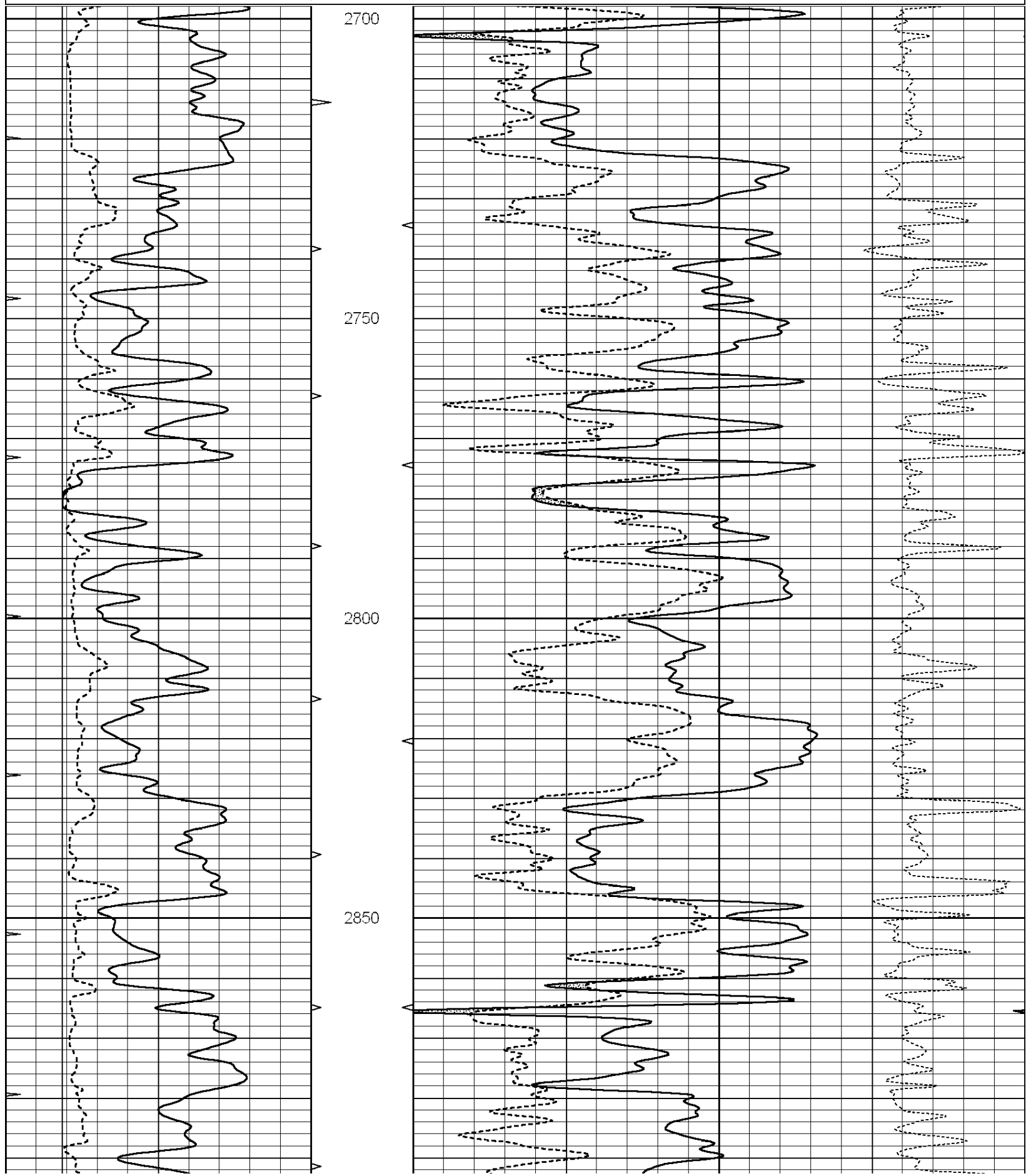
<<< Fold Here >>>

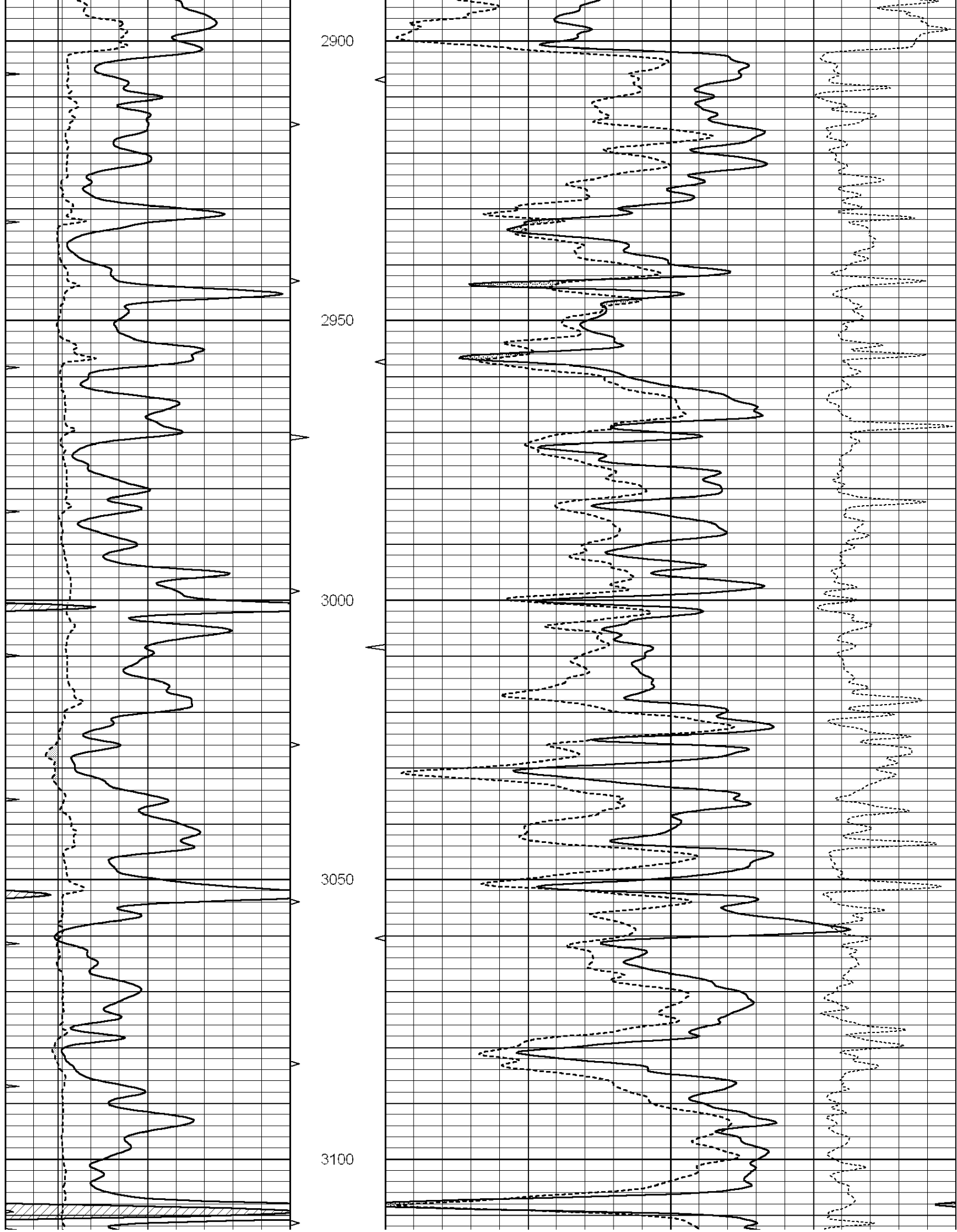
All interpretations are opinions based on inferences from electrical or other measurements and we cannot and do not guarantee the accuracy or correctness of any interpretation, and we shall not, except in the case of gross or willful negligence on our part, be liable or responsible for any loss, costs, damages, or expenses incurred or sustained by anyone resulting from any interpretation made by any of our officers, agents or employees. These interpretations are also subject to our general terms and conditions set out in our current Price Schedule.

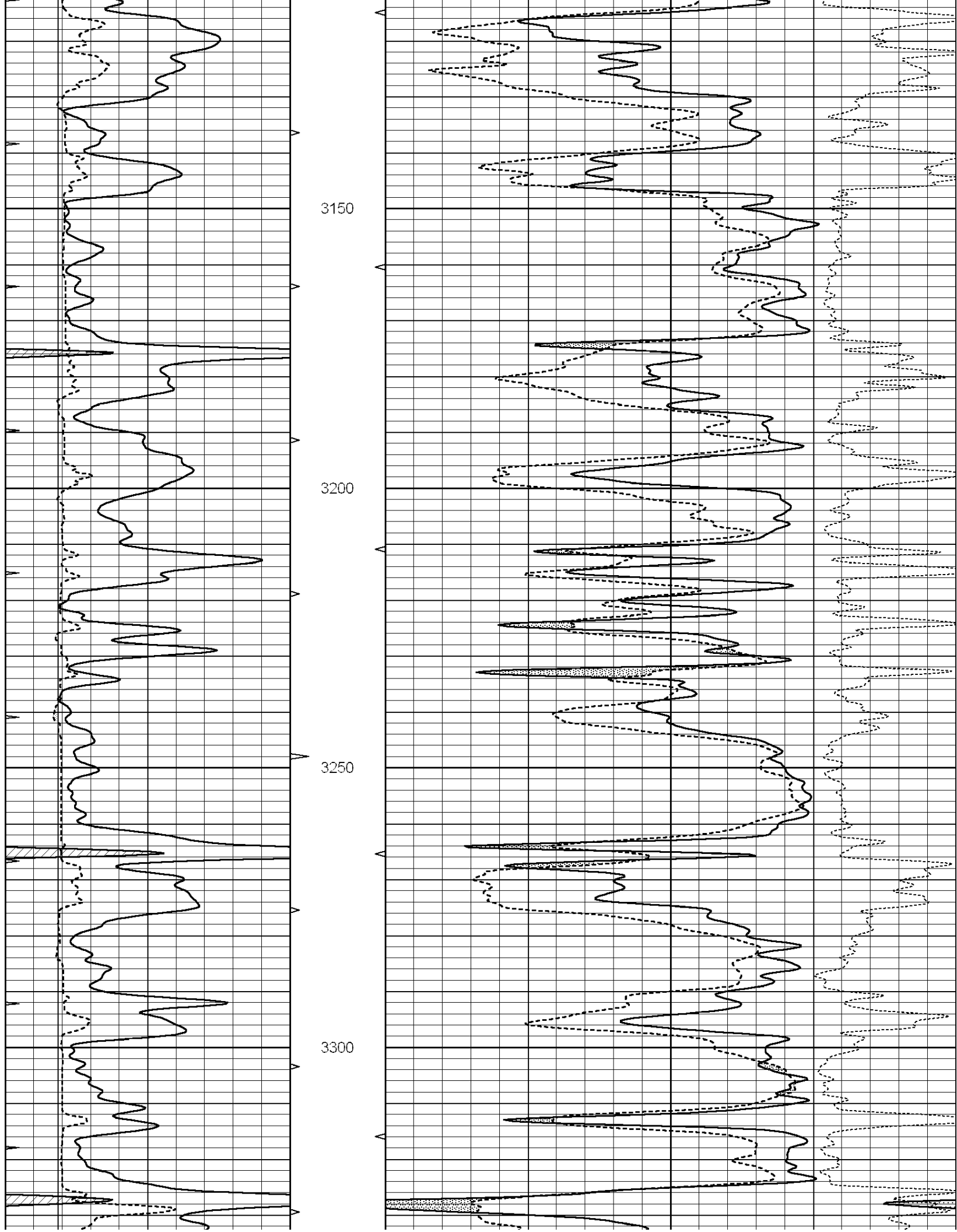
Comments

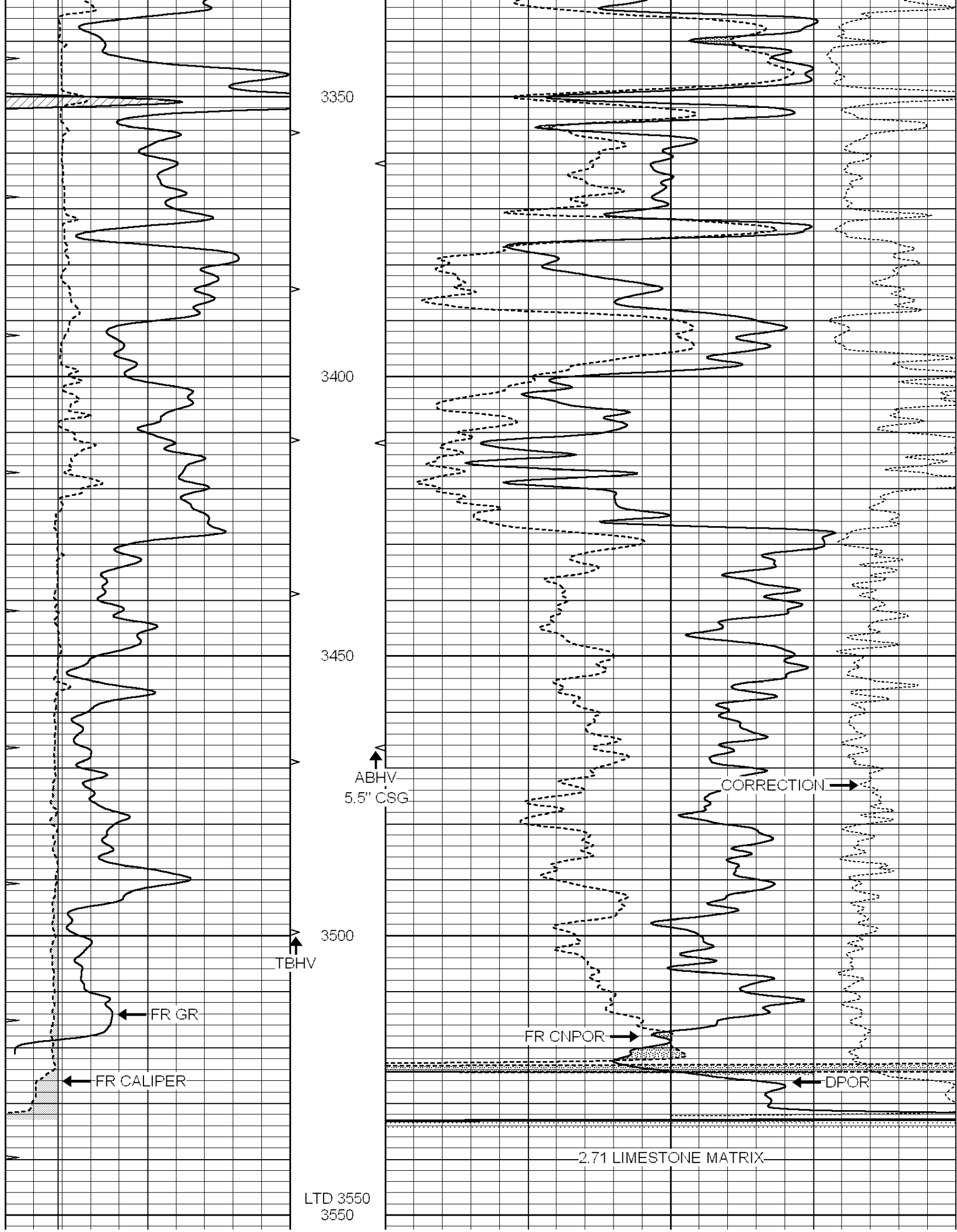
NABORS COMPLETION & PRODUCTION SERVICES
785-628-6395
THANK YOU FOR YOUR BUSINESS
DIRECTIONS: STOCKTON, KS. - WEST ON HWY 24 TO RD. 6 - 3/4 SOUTH EAST INTO

0	GAMMA RAY (GAPI)	150	ABHV	30	COMPENSATED DENSITY (pu)	-10
6	CALIPER (in)	16	10 (ft3)	0 30	COMPENSATED NEUTRON (pu)	-10
0	MINMK	20	TBHV		-0.25 CORRECTION (g/cc)	0.25
			0 (ft3)	10		









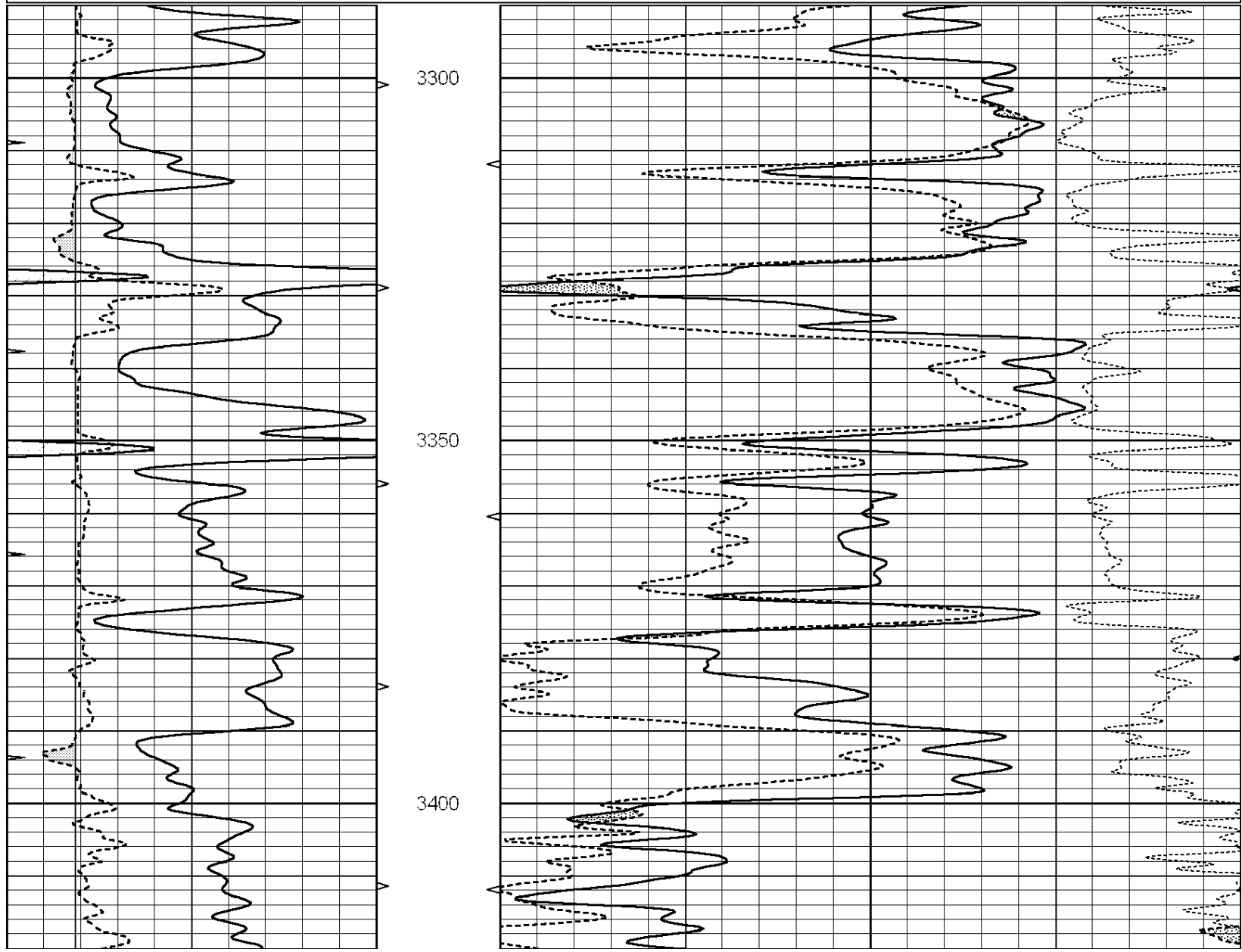
0	GAMMA RAY (GAPI)	150	ABHV	30	COMPENSATED DENSITY (pu)	-10
6	CALIPER (in)	16	10 (ft3)	0 30	COMPENSATED NEUTRON (pu)	-10
0	MINMK	20	TBHV		-0.25 CORRECTION (g/cc)	0.25
			0 (ft3)	10		

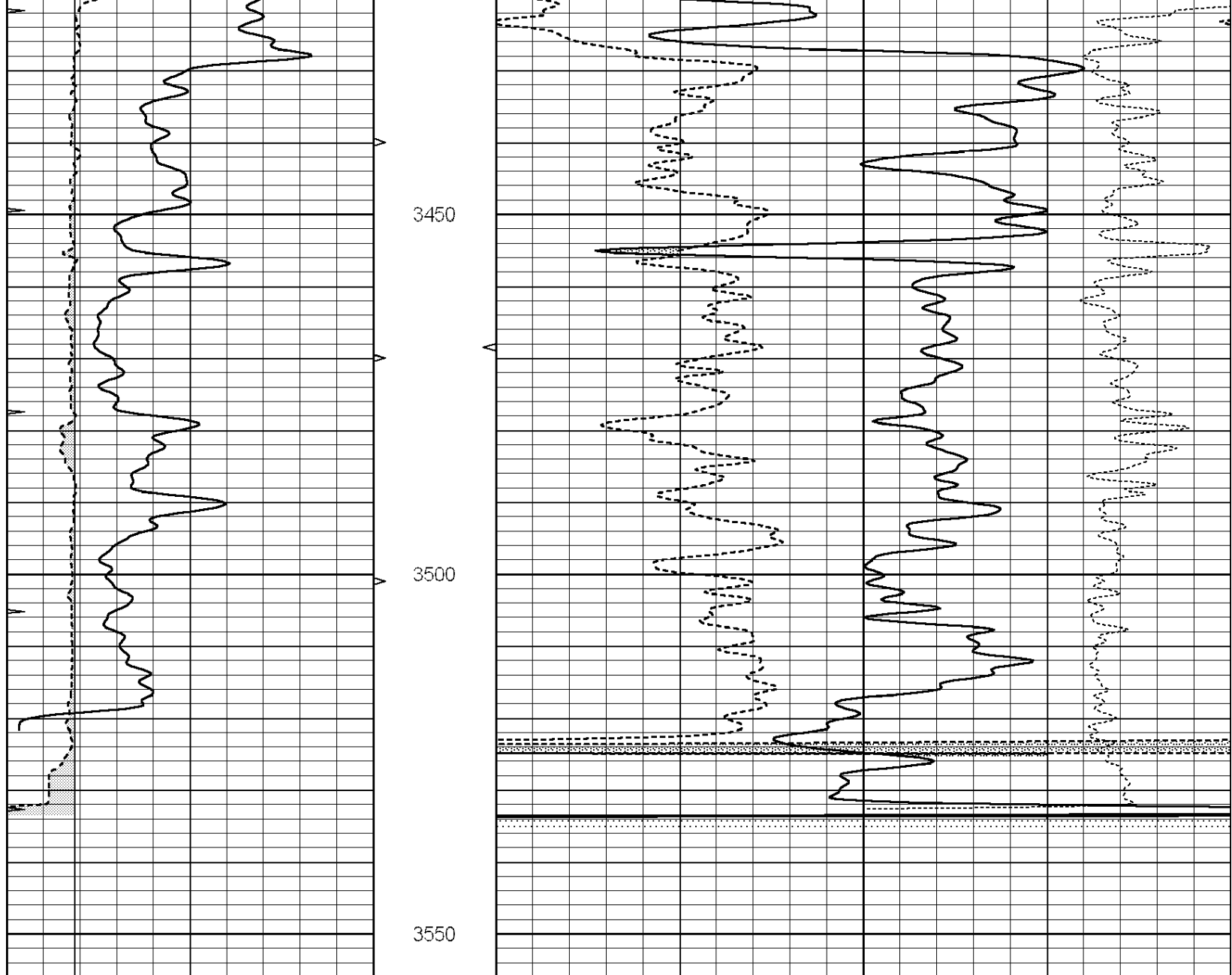


REPEAT SECTION

Database File: 010835ddn.db
 Dataset Pathname: pass2.8
 Presentation Format: den_neu
 Dataset Creation: Thu Mar 14 08:31:37 2013 by Calc Open-Cased 090629
 Charted by: Depth in Feet scaled 1:240

0	GAMMA RAY (GAPI)	150	ABHV	30	COMPENSATED DENSITY (pu)	-10
6	CALIPER (in)	16	10 (ft3)	0 30	COMPENSATED NEUTRON (pu)	-10
0	MINMK	20	TBHV		-0.25 CORRECTION (g/cc)	0.25
			0 (ft3)	10		





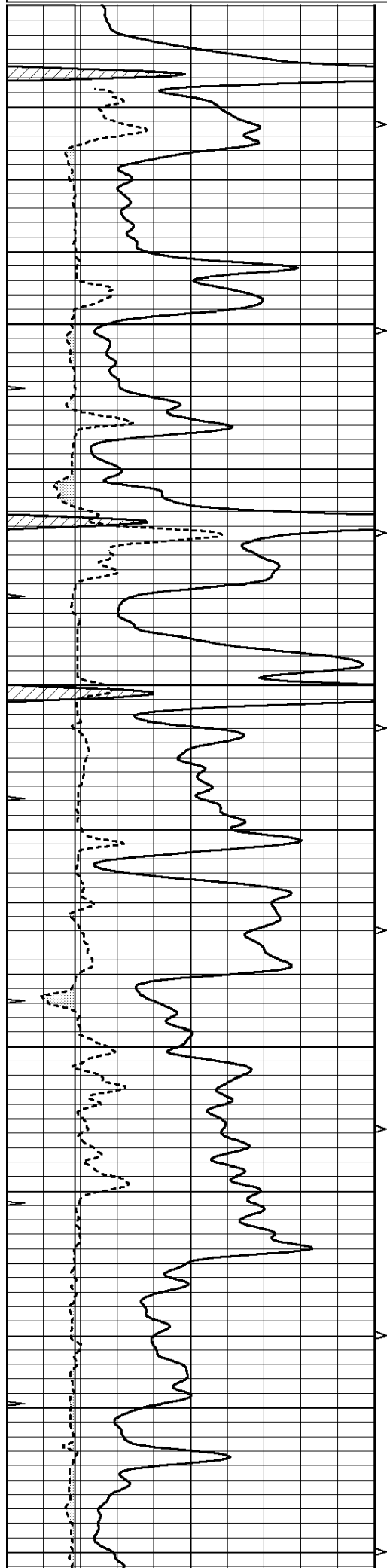
0	GAMMA RAY (GAPI)	150	ABHV	30	COMPENSATED DENSITY (pu)	-10	
6	CALIPER (in)	16	10 (ft3)	0	30	COMPENSATED NEUTRON (pu)	-10
0	MINMK	20	TBHV		-0.25	CORRECTION (g/cc)	0.25
			0 (ft3)	10			



DOLOMITE MATRIX

Database File: 010835ddn.db
 Dataset Pathname: passDD
 Presentation Format: den_neu
 Dataset Creation: Thu Mar 14 08:55:25 2013
 Charted by: Depth in Feet scaled 1:240

0	GAMMA RAY (GAPI)	150	ABHV	30	COMPENSATED DENSITY (pu)	-10	
6	CALIPER (in)	16	10 (ft3)	0	30	COMPENSATED NEUTRON (pu)	-10
0	MINMK	20	TBHV		-0.25	CORRECTION (g/cc)	0.25
			0 (ft3)	10			

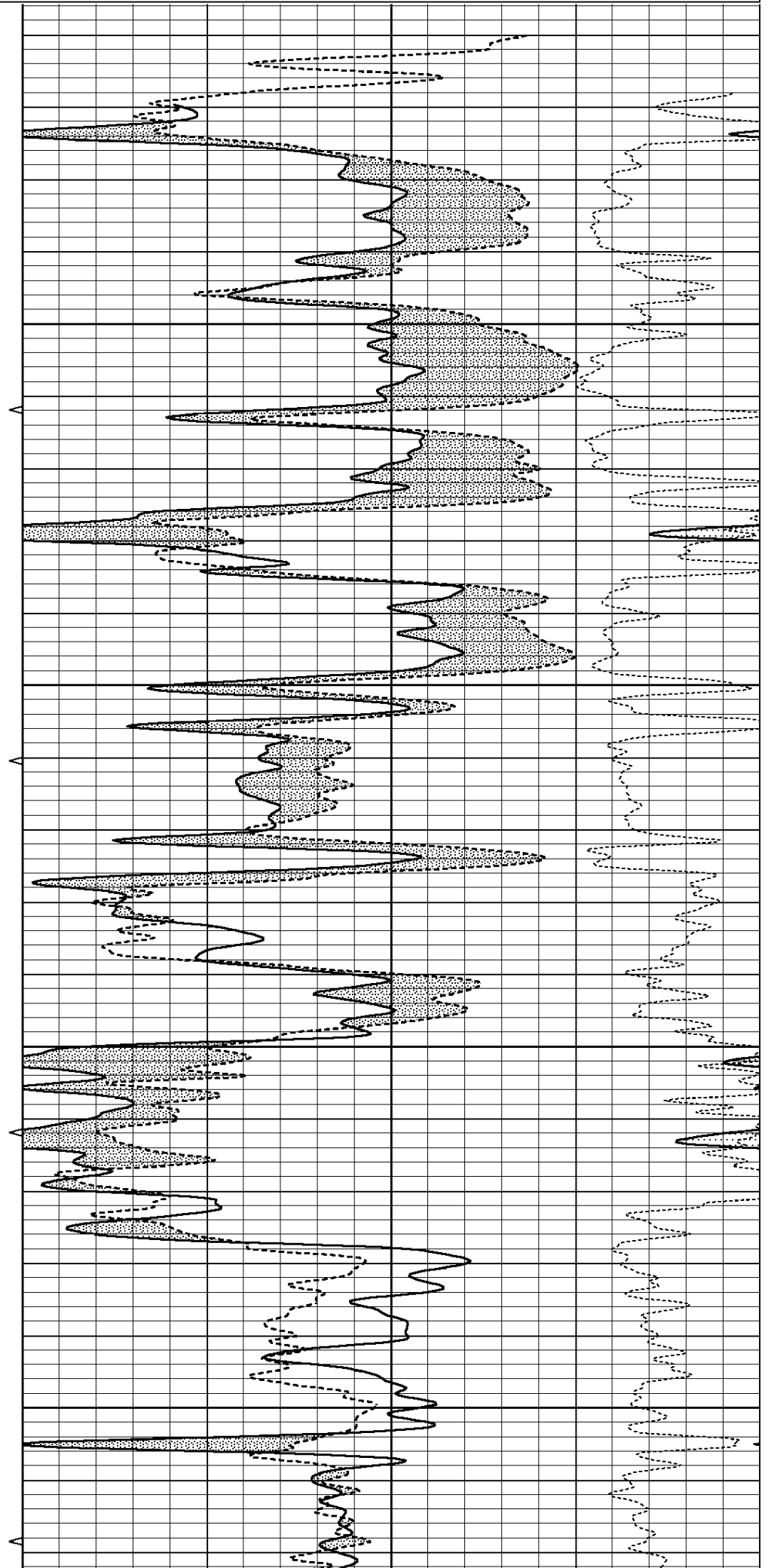


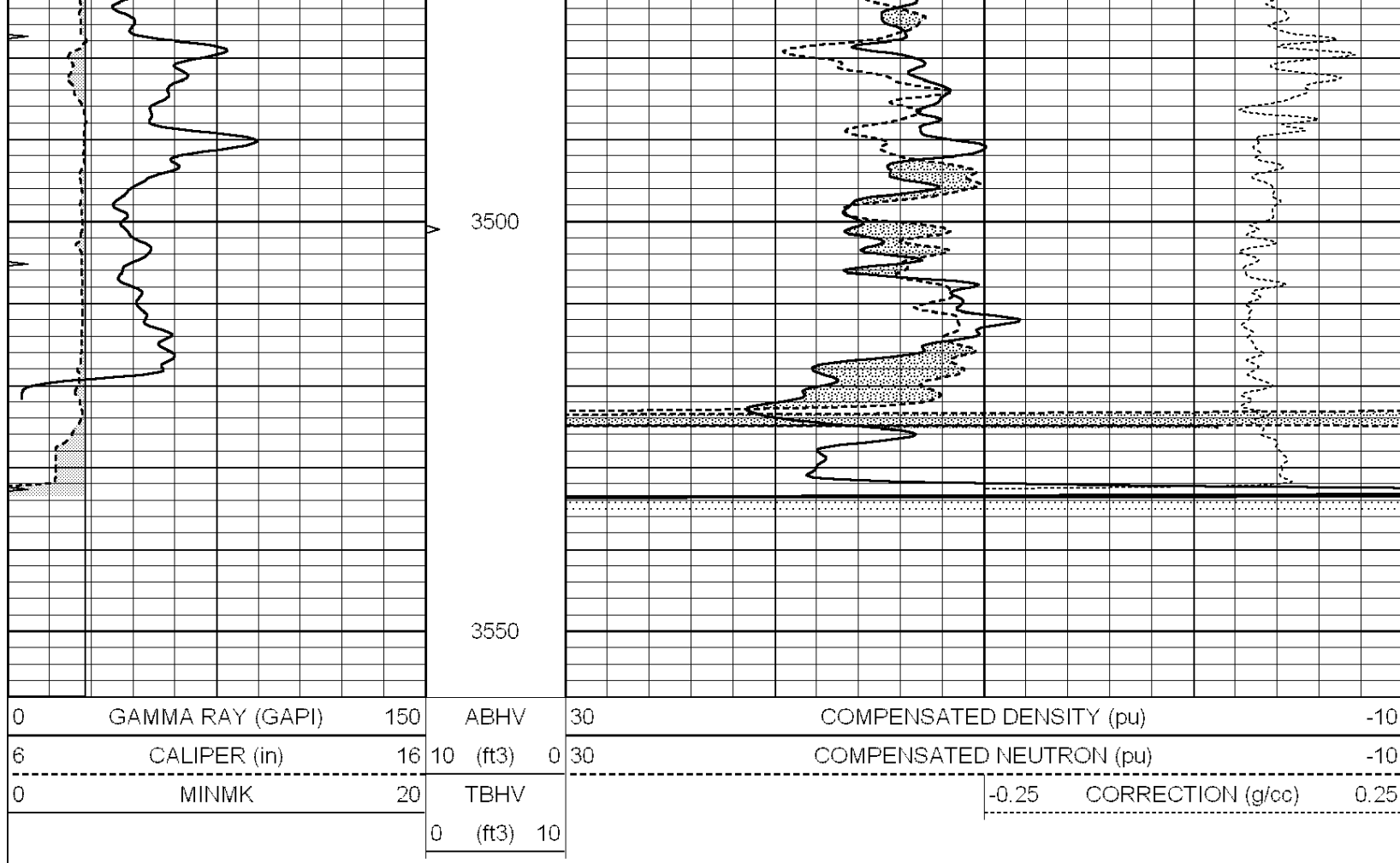
3300

3350

3400

3450





Calibration Report

Database File: 010835ddn.db
 Dataset Pathname: pass3.4
 Dataset Creation: Thu Mar 14 08:40:57 2013 by Calc Open-Cased 090629

Dual Induction Calibration Report

Serial-Model: PROBE7-DILG
 Surface Cal Performed: Tue Mar 05 21:11:24 2013
 Downhole Cal Performed: Sat Jan 19 19:51:38 2013
 After Survey Verification Performed: Sat Jan 19 19:51:38 2013

Surface Calibration

Loop:	Readings			References			Results	
	Air	Loop	V	Air	Loop	mmho/m	m	b
Deep	0.793	0.790	V	0.000	400.000	mmho/m	630.000	0.000
Medium	0.992	1.002	V	0.000	464.000	mmho/m	700.000	-46.000
Internal:	Zero	Cal		Zero	Cal		m	b
Deep	0.041	0.642	V	0.000	400.000	mmho/m	664.874	-27.011
Medium	0.035	0.802	V	0.000	464.000	mmho/m	604.936	-21.367

Downhole Calibration

	Readings			References			Results	
	Zero	Cal	V	Zero	Cal	mmho/m	m'	b'
Deep	135384.000	27094.500	V	135400.000	27082.400	mmho/m	1.000	-19.259
Medium	-47330.100	-9381.740	V	-47327.100	-9389.280	mmho/m	1.000	-10.154
LL3		7.322	V		1400.000	Ohm-m		
		0.038	V		20.000	Ohm-m		

-7.273

V

4000.000

mmho-m

After Survey Verification

	Readings			Targets			Results	
	Zero	Cal		Zero	Cal		m'	b'
Deep	0.000	0.000	mmho/m	135384.000	27094.500	mmho/m	1.000	0.000
Medium	0.000	0.000	mmho/m	-47330.100	-9381.740	mmho/m	1.000	0.000
LL3		0.000	Ohm-m		1400.000	Ohm-m		
		0.000	Ohm-m		20.000	Ohm-m		
		0.000	mmho-m		4000.000	mmho-m		

Compensated Density Calibration Report

Serial-Model: GEAR1-GEARHART
 Source / Verifier: 147 / 147
 Master Calibration Performed: Tue Mar 05 21:10:23 2013

Master Calibration

	Density		Far Detector	Near Detector	
Magnesium	1.710	g/cc	1205.77	610.74	cps
Aluminum	2.590	g/cc	271.21	419.72	cps
Spine Angle = 75.89			Density/Spine Ratio = 0.572		
	Size		Reading		
Small Ring	7.30	in	4.69	V	
Large Ring	14.00	in	6.52	V	

Compensated Neutron Calibration Report

Serial Number: NEU_4I
 Tool Model: G

CALIBRATION

Detector	Readings		Target	Normalization	
Short Space	1.00	cps	1.00	cps	1.0000
Long Space	1.00	cps	1.00	cps	1.0000

Gamma Ray Calibration Report

Serial Number: GR5
 Tool Model: OPEN
 Performed: Wed Mar 13 02:09:59 2013

Calibrator Value: 1.0 GAPI

Background Reading: 0.0 cps
 Calibrator Reading: 1.0 cps

Sensitivity: 1.9000 GAPI/cps