



Pioneer Energy Services

Dual Induction Log

15-063-22,095-00-00

API No.

Company **6G Twister, Inc.**

Well **Pooh Bah #1**

Field **Trove**

County **Gove** State

Kansas

Location **1650' FNL & 1650' FEL**

Other Services
CNL/CDL
MEL/BHCS

Sec: **25** Twp: **11S** Rge: **26W**

Permanent Datum **Ground Level** Elevation **2541**

Log Measured From **Kelly Bushing** 9 Ft. Above Perm. Datum

Elevation
K.B. 2550
D.F. 2541
G.L. 2541

Date **4/2/2013**

Run Number **One**

Depth Driller **4160**

Depth Logger **4159**

Bottom Logged Interval **4158**

Top Log Interval **200**

Casing Driller **8.625 @ 234**

Casing Logger **233**

Bit Size **7.875**

Type Fluid in Hole **Chemical**

Salinity,ppm CL **1,600**

Density / Viscosity **9.2 56**

pH / Fluid Loss **10.0 7.4**

Source of Sample **Flowline**

Rm @ Meas. Temp **1.4 @ 52**

Rmf @ Meas. Temp **1.05 @ 52**

Rmc @ Meas. Temp **1.89 @ 52**

Source of Rmf / Rmc **Charts**

Rm @ BHT **.62 @ 118**

Operating Rig Time **4 Hours**

Max Rec. Temp. F **118**

Equipment Number **17**

Location **Hays**

Recorded By **C. Desaire**

Witnessed By **Clayton Erickson**

<<< Fold Here >>>

All interpretations are opinions based on inferences from electrical or other measurements and we cannot and do not guarantee the accuracy or correctness of any interpretation, and we shall not, except in the case of gross or willful negligence on our part, be liable or responsible for any loss, costs, damages, or expenses incurred or sustained by anyone resulting from any interpretation made by any of our officers, agents or employees. These interpretations are also subject to our general terms and conditions set out in our current Price Schedule.

Comments

Thank you for using Pioneer Energy Services
www.pioneerenergy.com
785 625 3858

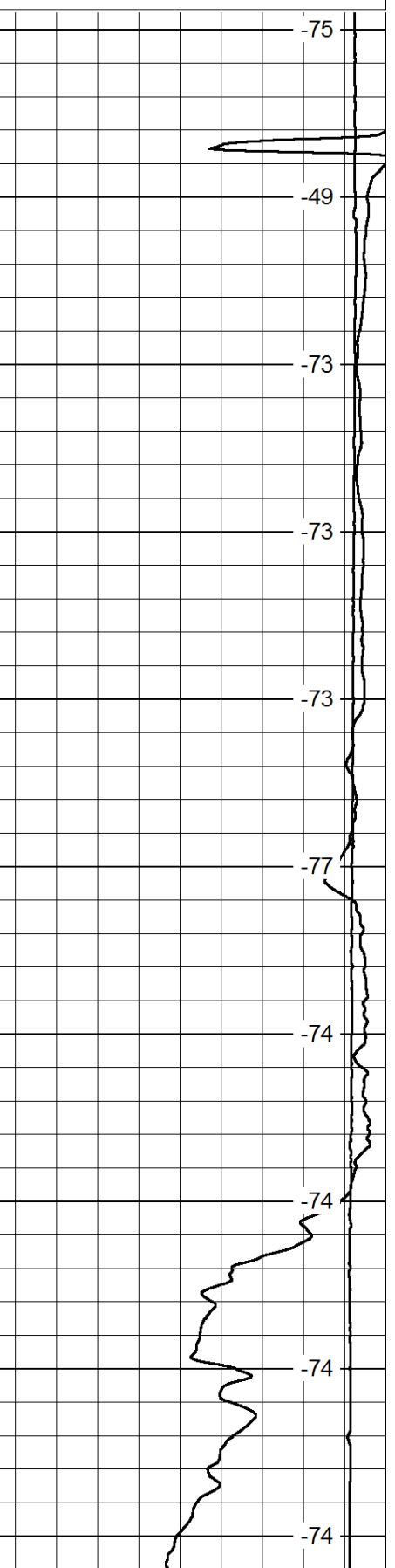
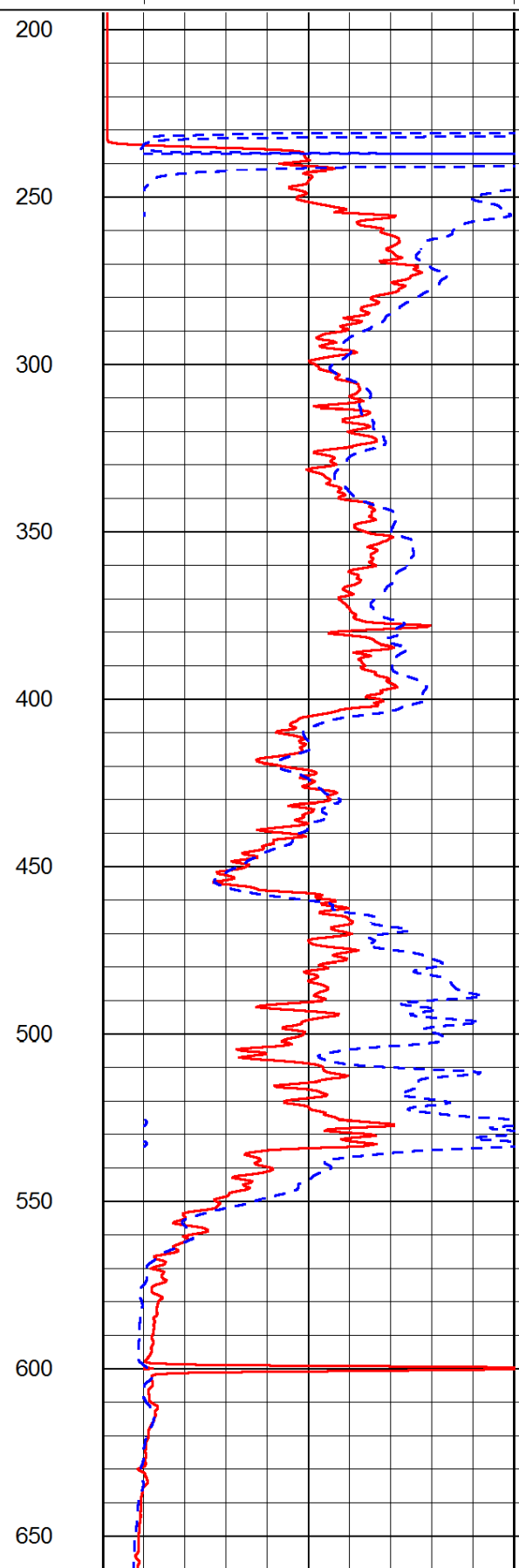
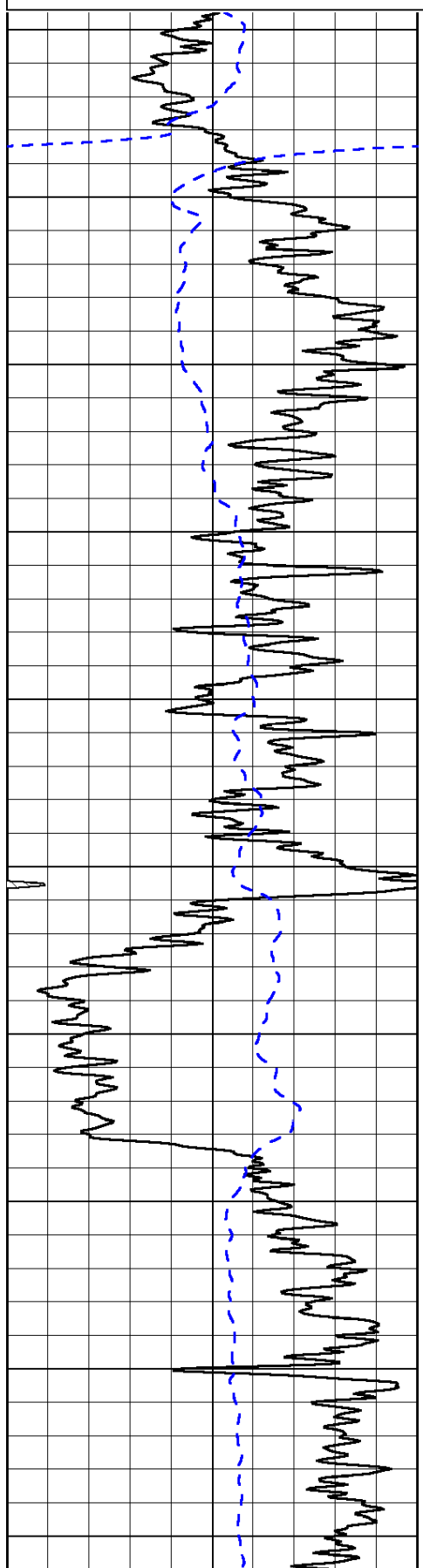
Quinter KS, N Edge (AA Rd),
4 7/8 E, SE Through Cattle Guard, S Into

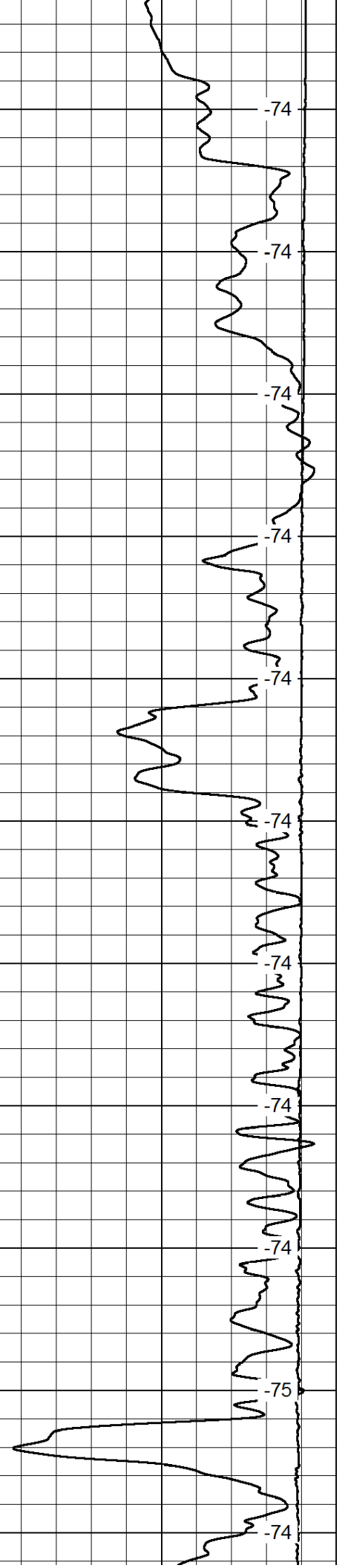
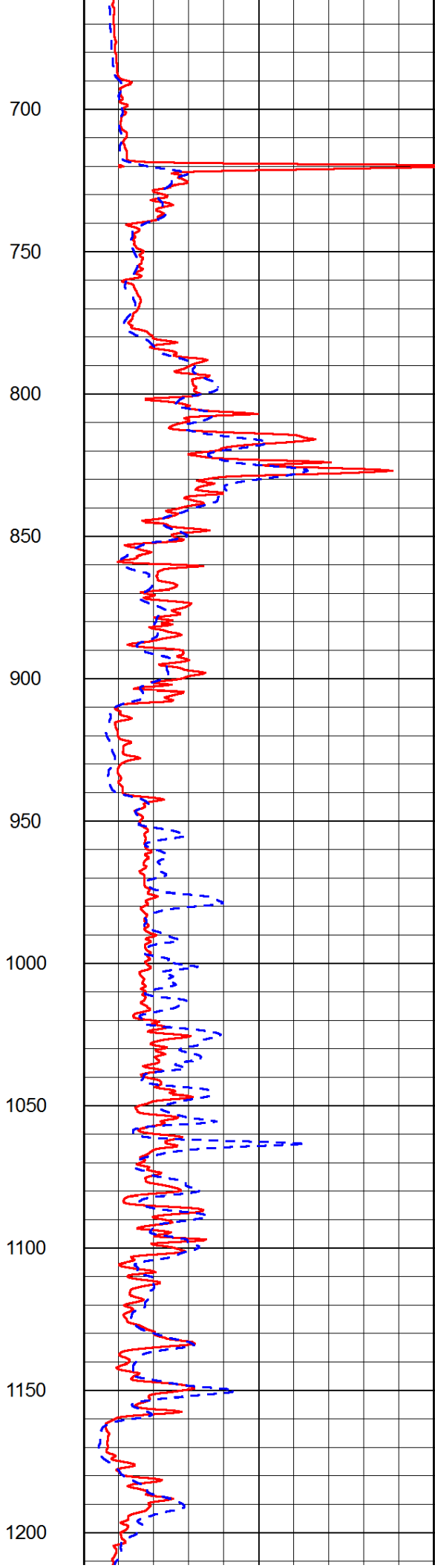
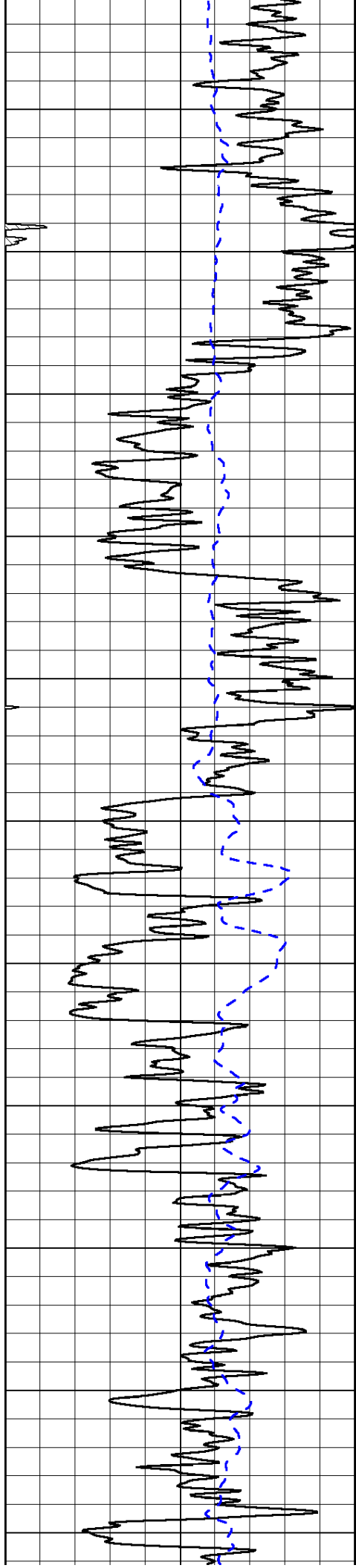
Database File: c:\warrior\data\6 g twister_pooh bah #1\twisthd.db
Dataset Pathname: dil/twstsk
Presentation Format: dil2in
Dataset Creation: Wed Apr 03 00:23:19 2013
Charted by: Depth in Feet scaled 1:600

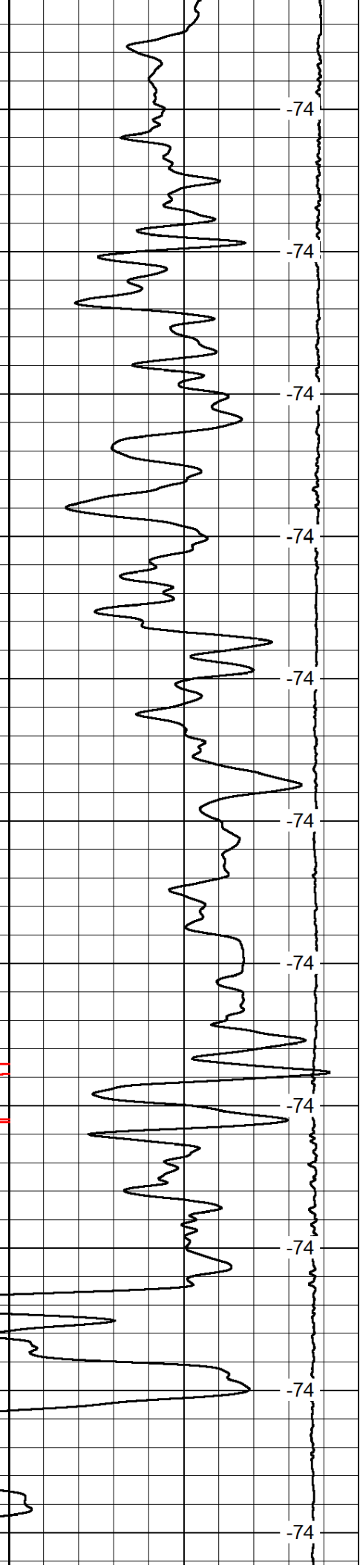
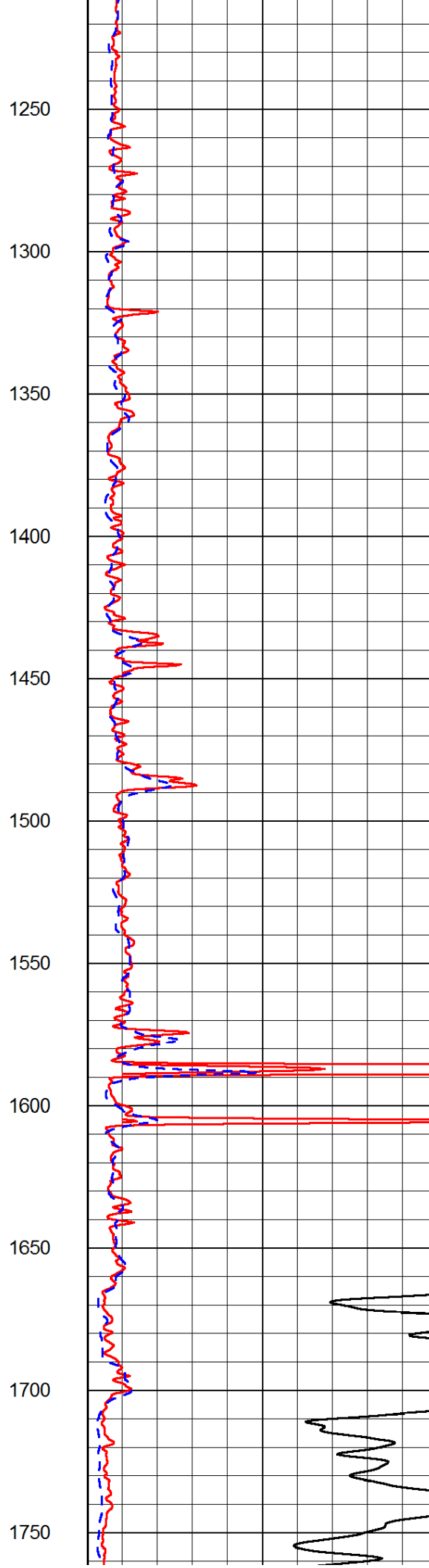
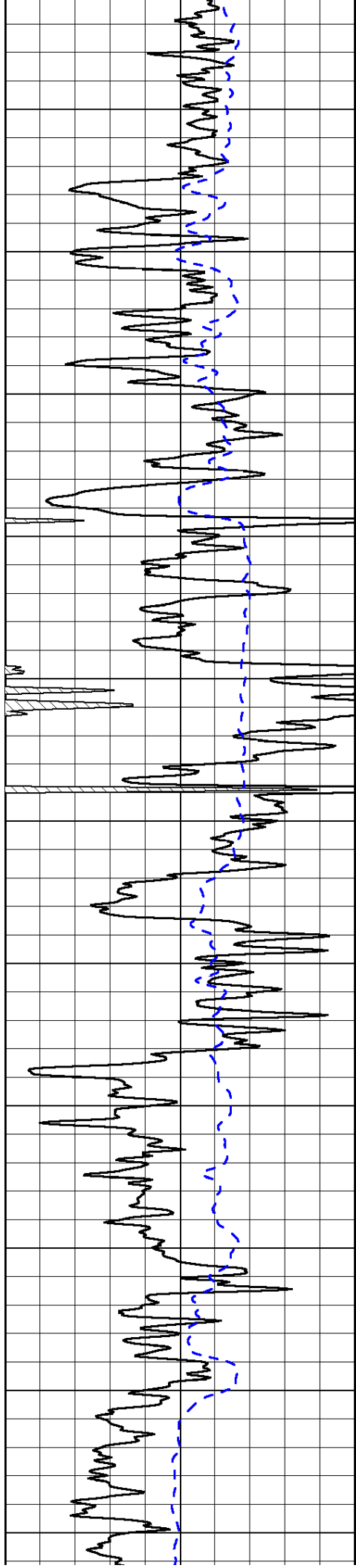
0	Gamma Ray	150
-200	SP (mV)	0

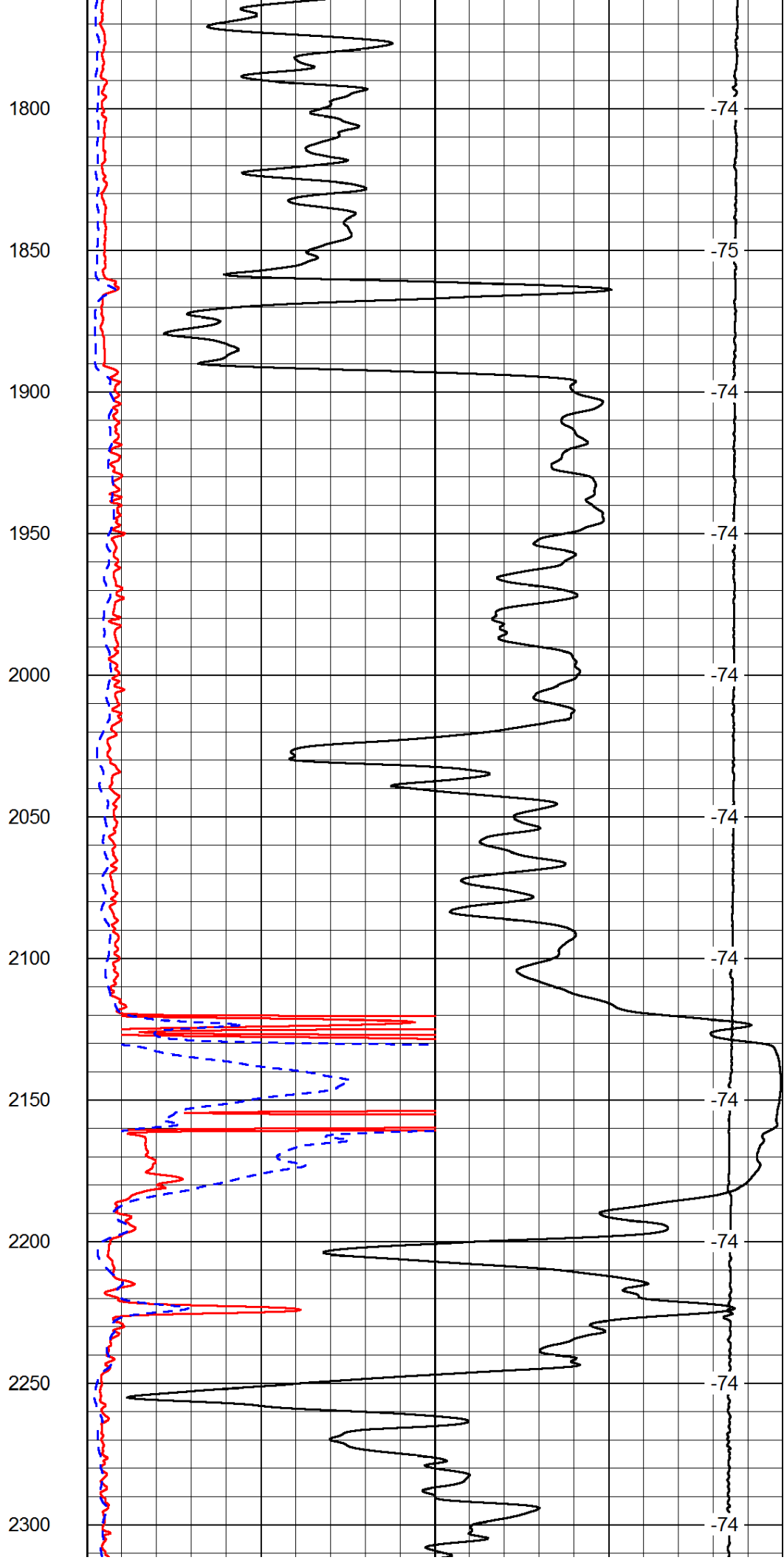
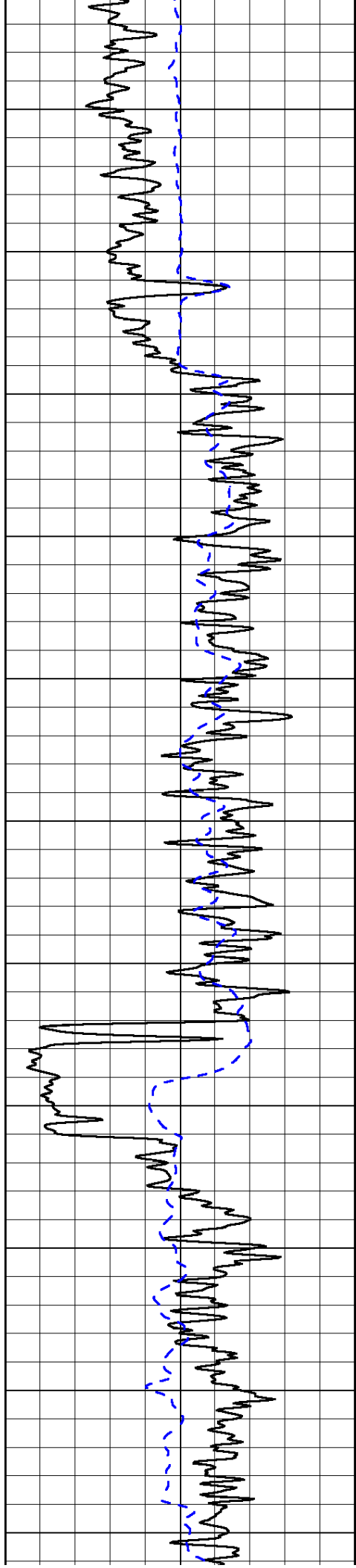
0	Shallow Resistivity	50
0	Deep Resistivity	50
1000	Conductivity	0
15000	Line Tension	0
50	Shallow Resistivity	500
50	Deep Resistivity	500

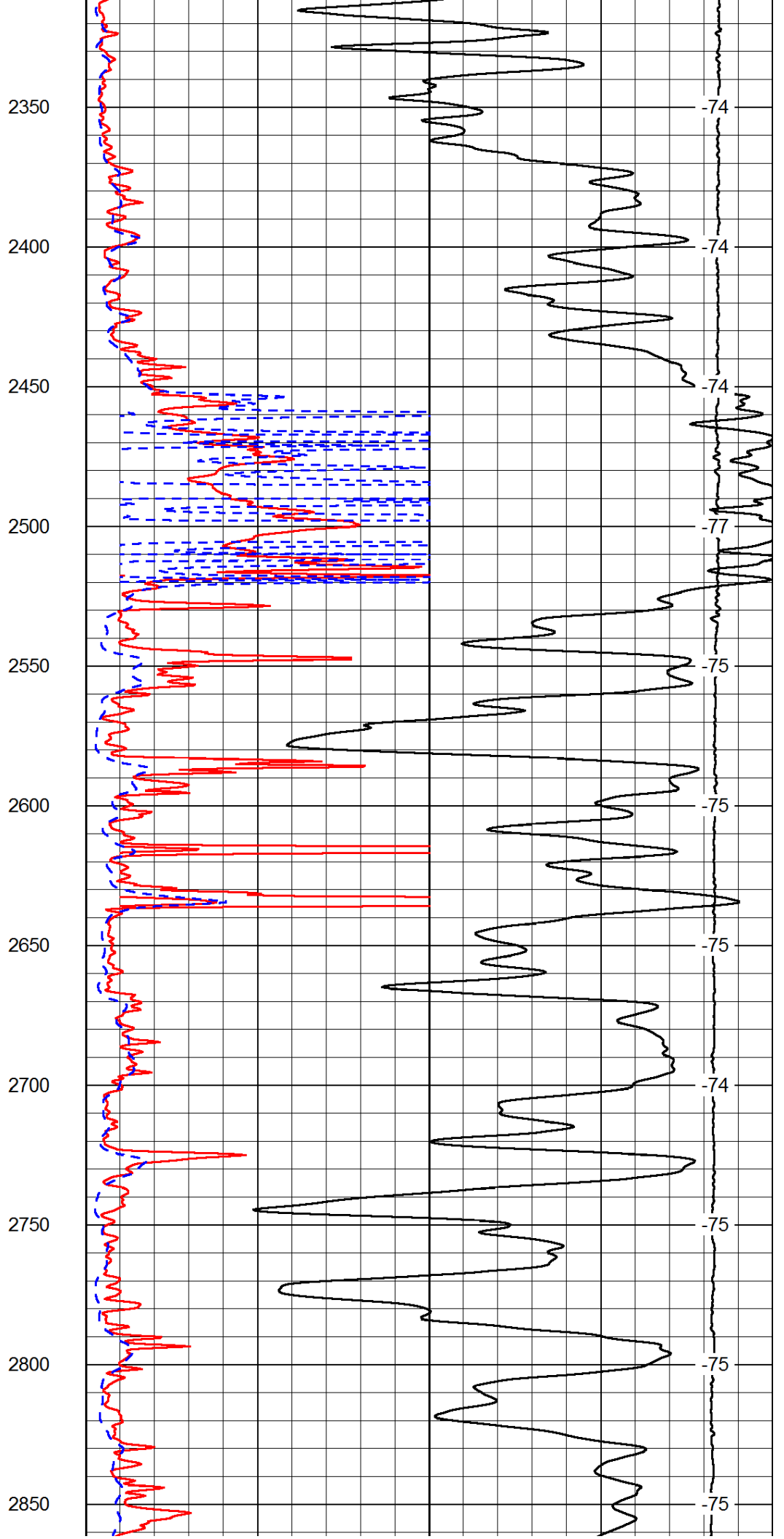
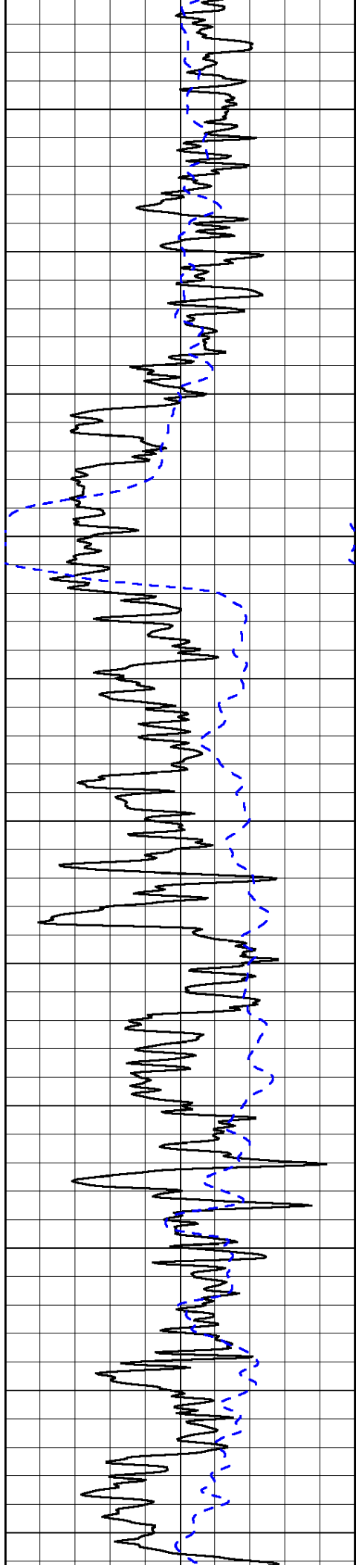
LSPD

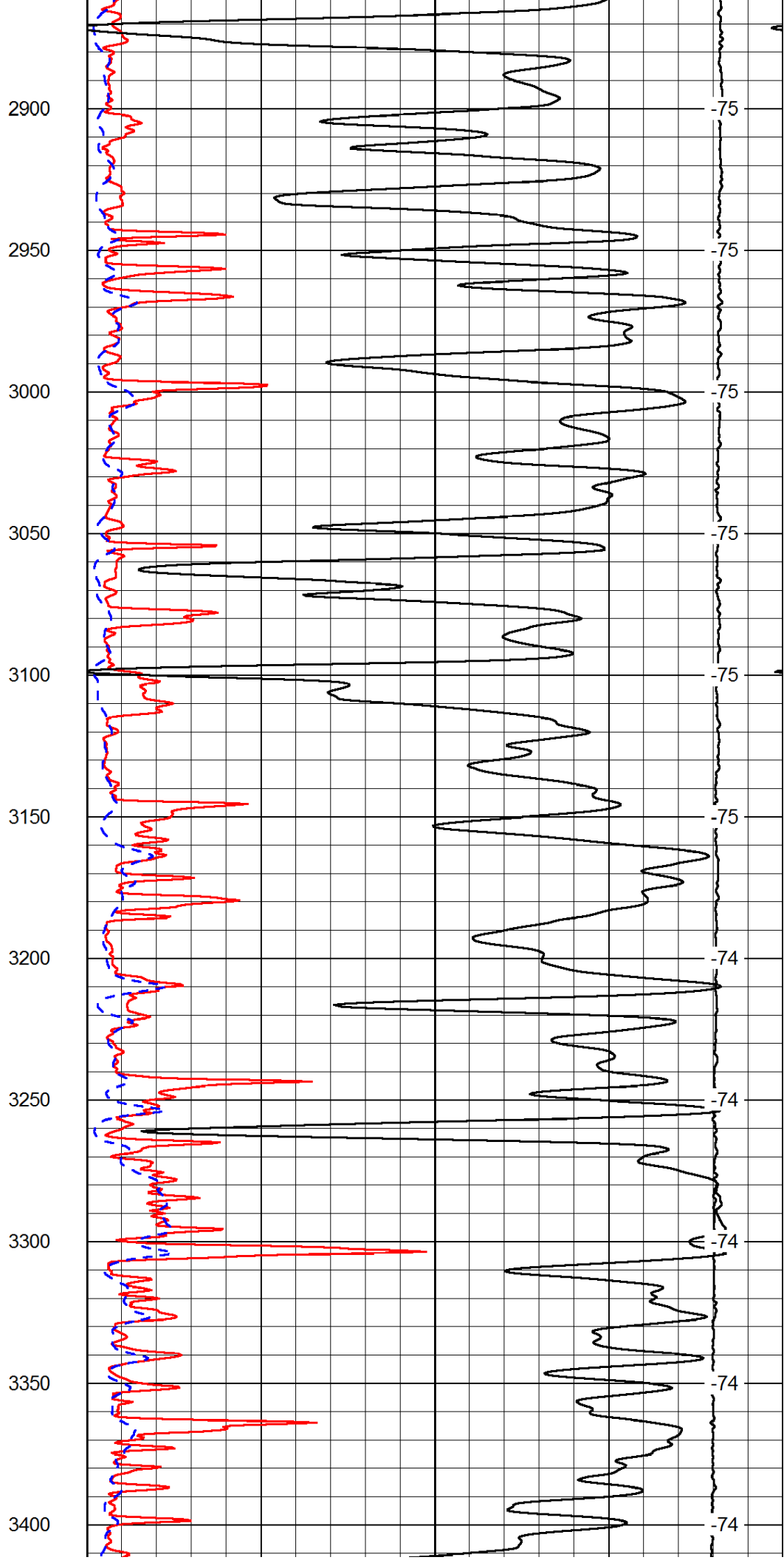
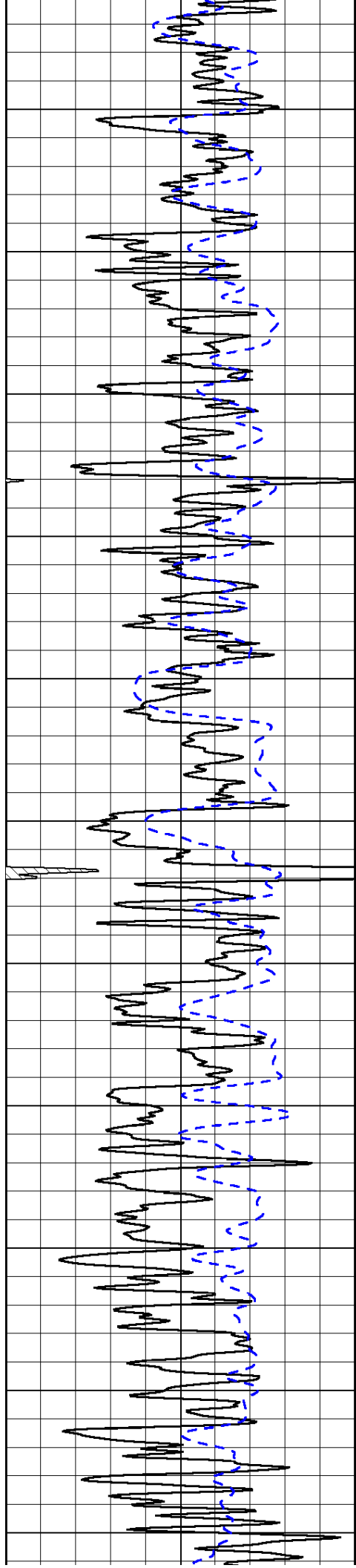


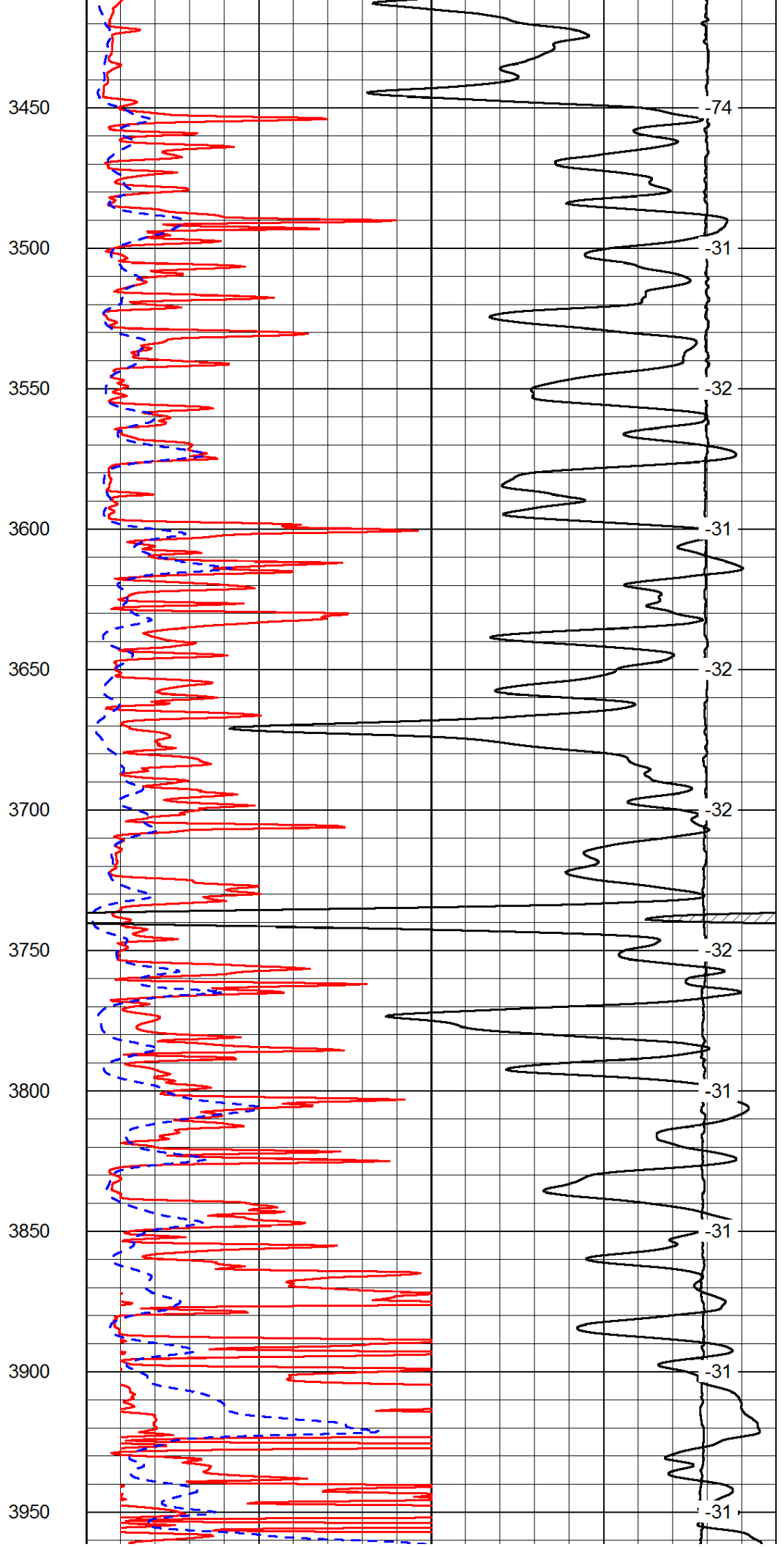
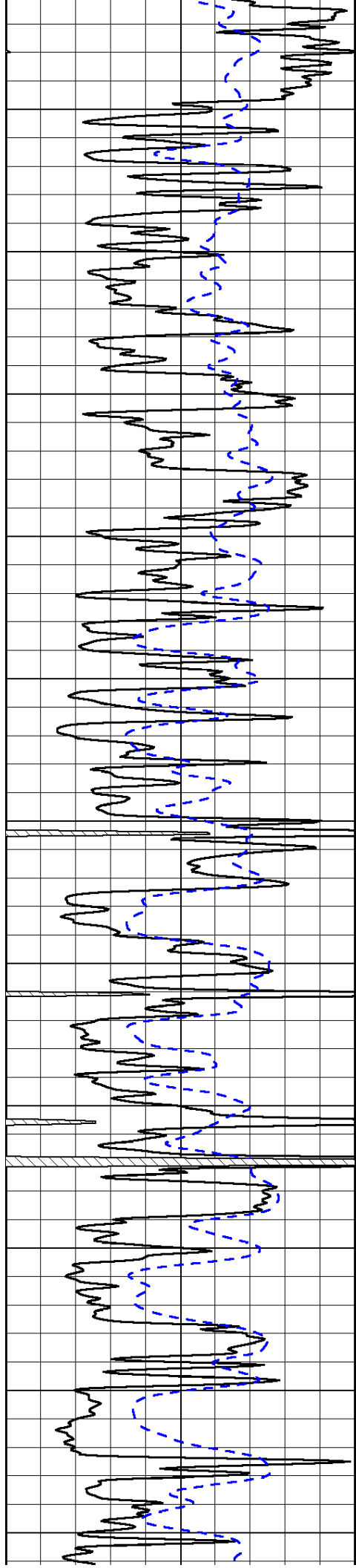


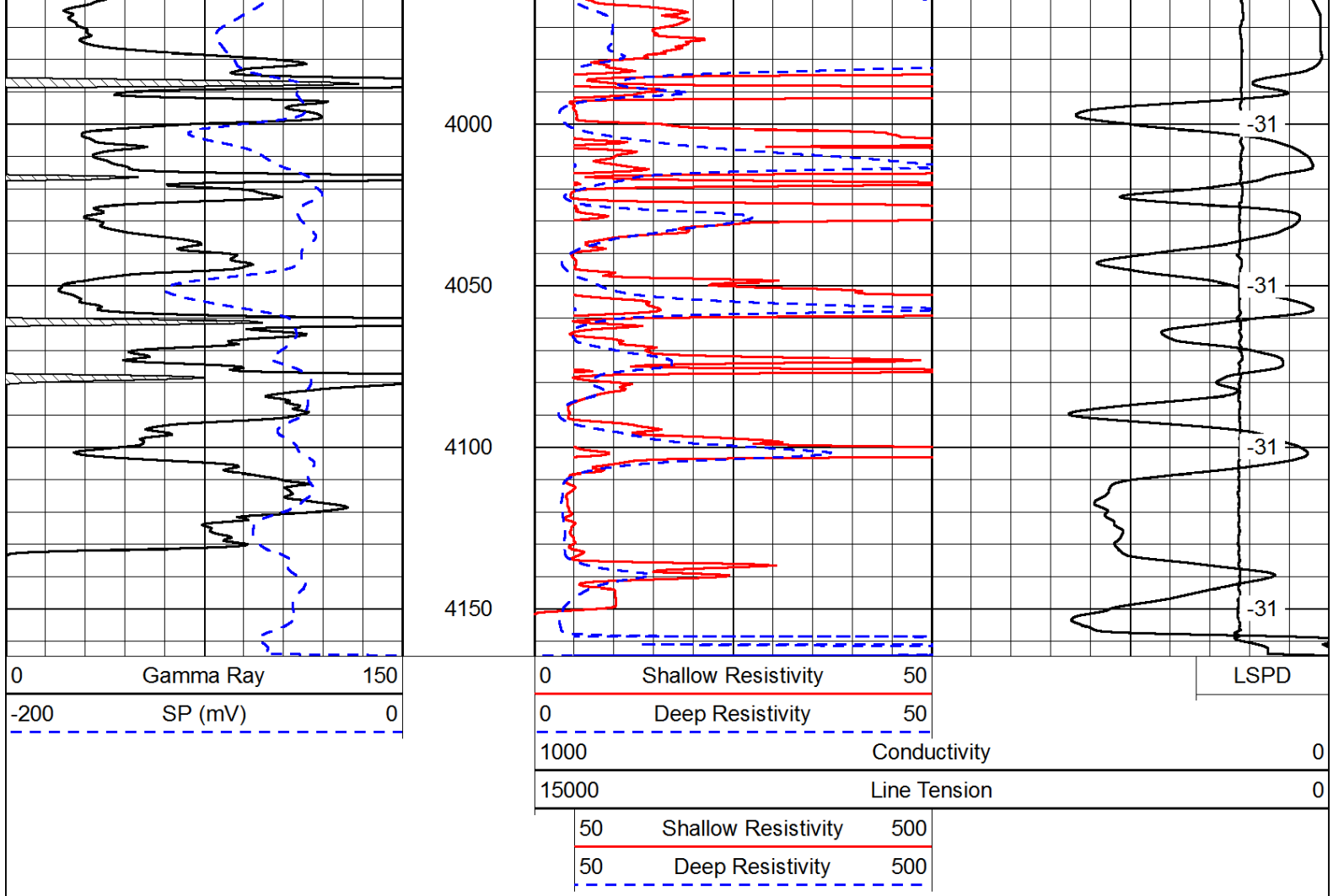




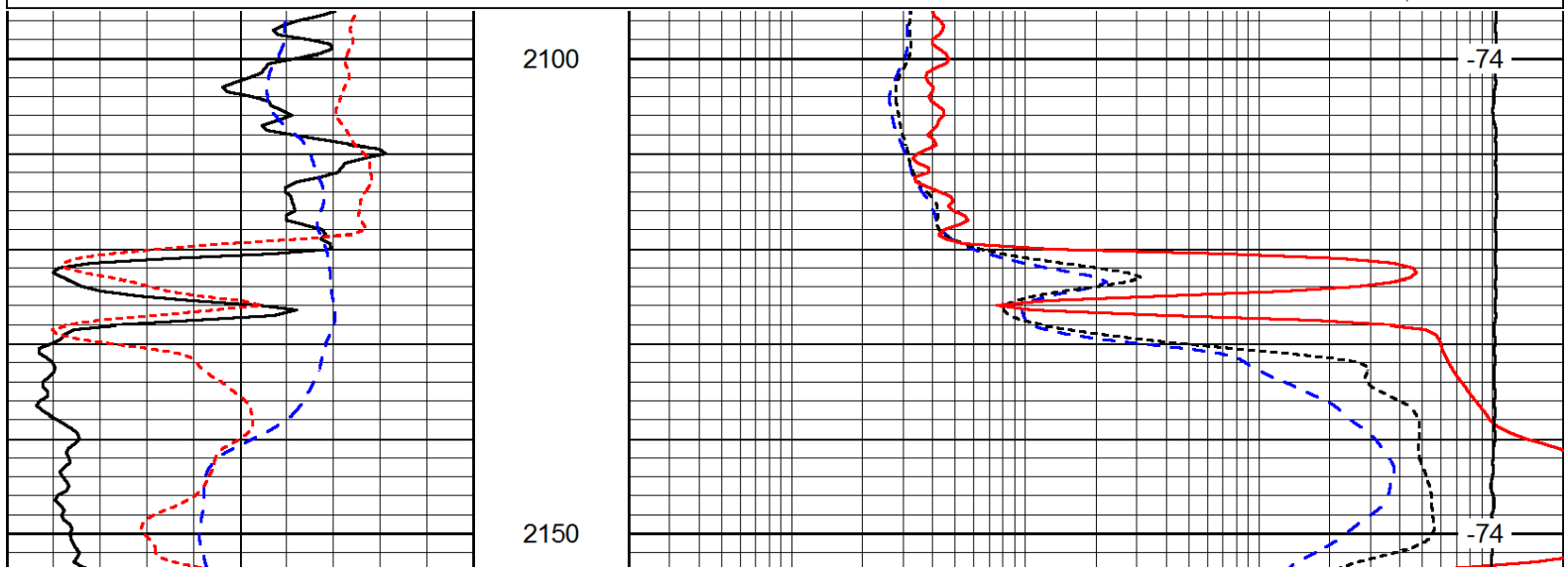
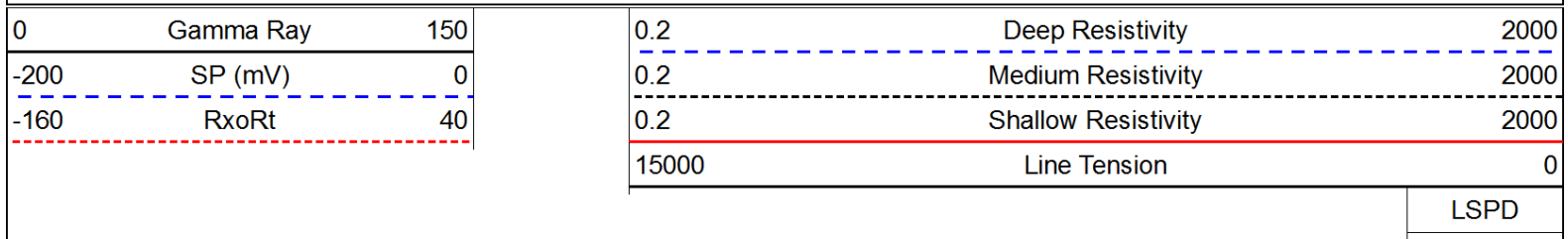


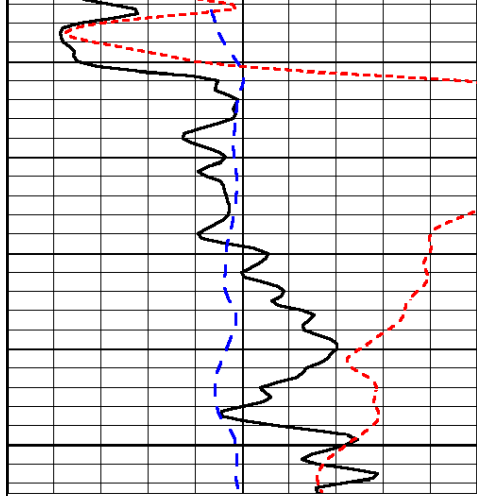






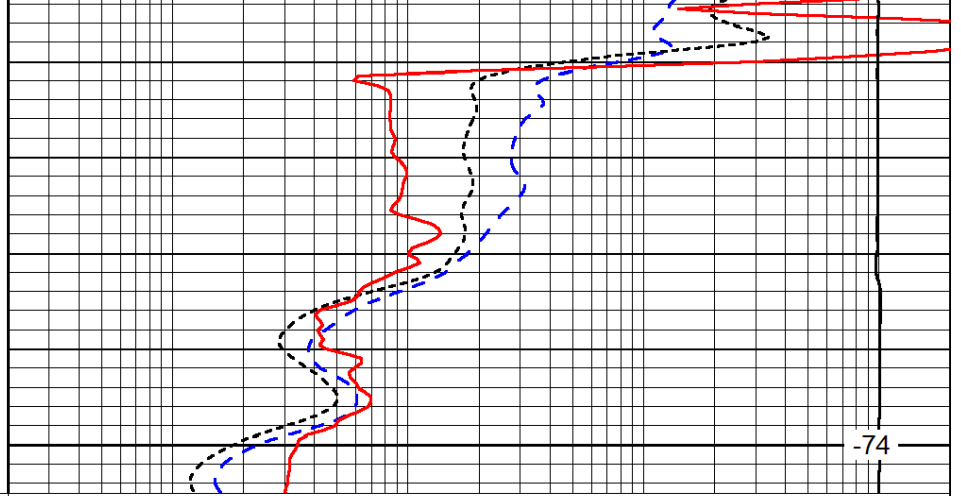
Database File: c:\warrior\data\6 g twister_pooh bah #1\twisthd.db
 Dataset Pathname: dil/twststk
 Presentation Format: dil
 Dataset Creation: Wed Apr 03 00:23:19 2013
 Charted by: Depth in Feet scaled 1:240





0	Gamma Ray	150
-200	SP (mV)	0
-160	RxoRt	40

2200



0.2	Deep Resistivity	2000
0.2	Medium Resistivity	2000
0.2	Shallow Resistivity	2000
15000	Line Tension	0

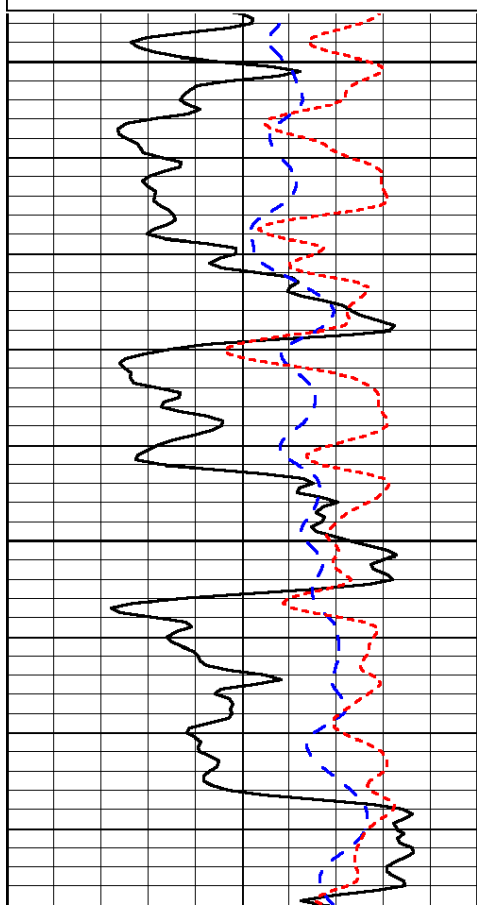
LSPD

Database File: c:\warrior\data\6 g twister_pooh bah #1\twisthd.db
 Dataset Pathname: dil/twststk
 Presentation Format: dil
 Dataset Creation: Wed Apr 03 00:23:19 2013
 Charted by: Depth in Feet scaled 1:240

0	Gamma Ray	150
-200	SP (mV)	0
-160	RxoRt	40

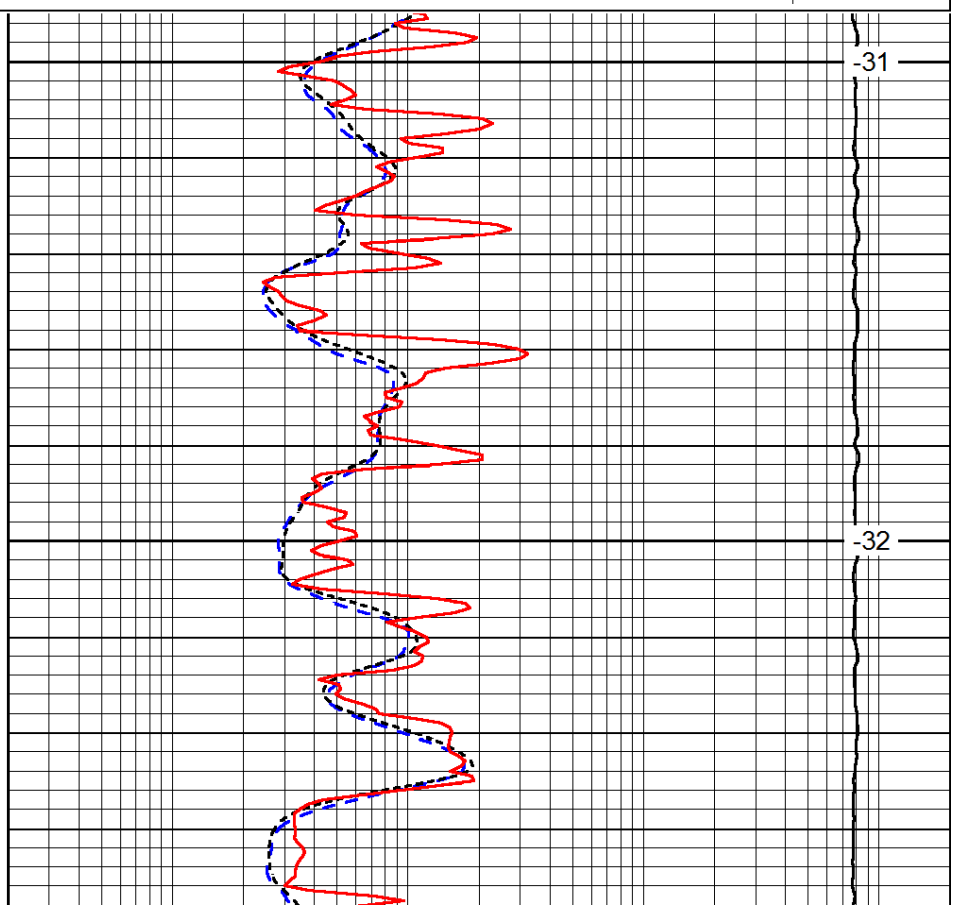
0.2	Deep Resistivity	2000
0.2	Medium Resistivity	2000
0.2	Shallow Resistivity	2000
15000	Line Tension	0

LSPD



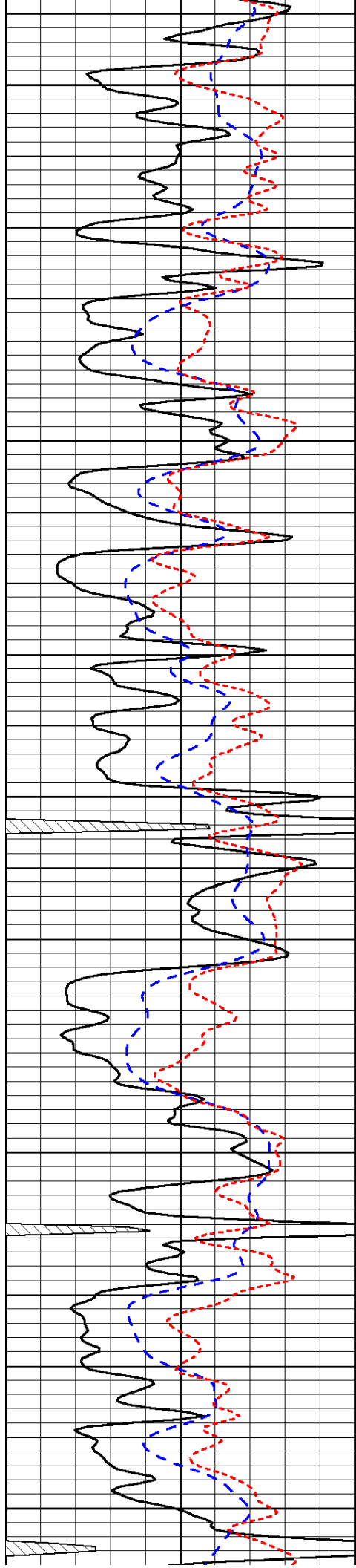
3500

3550



-31

-32



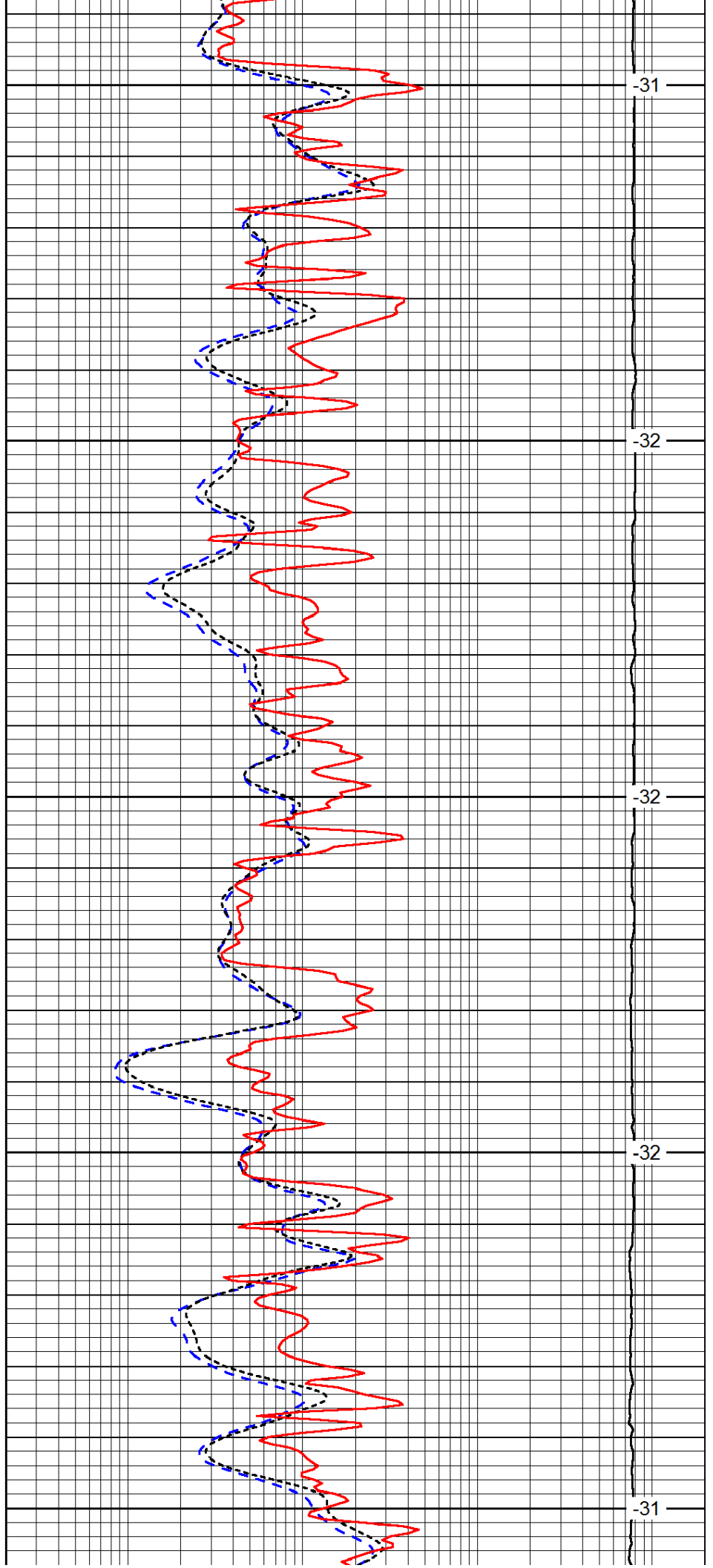
3600

3650

3700

3750

3800



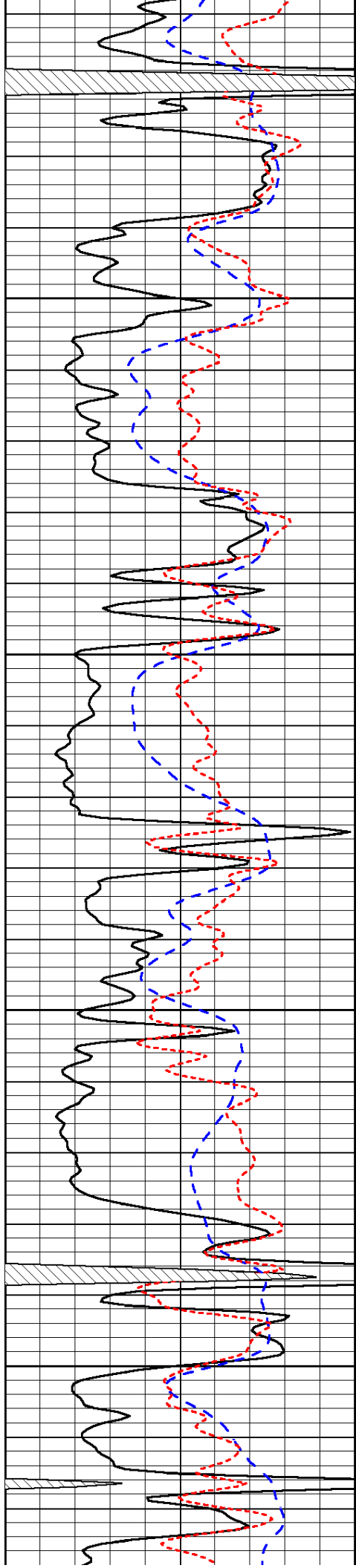
-31

-32

-32

-32

-31

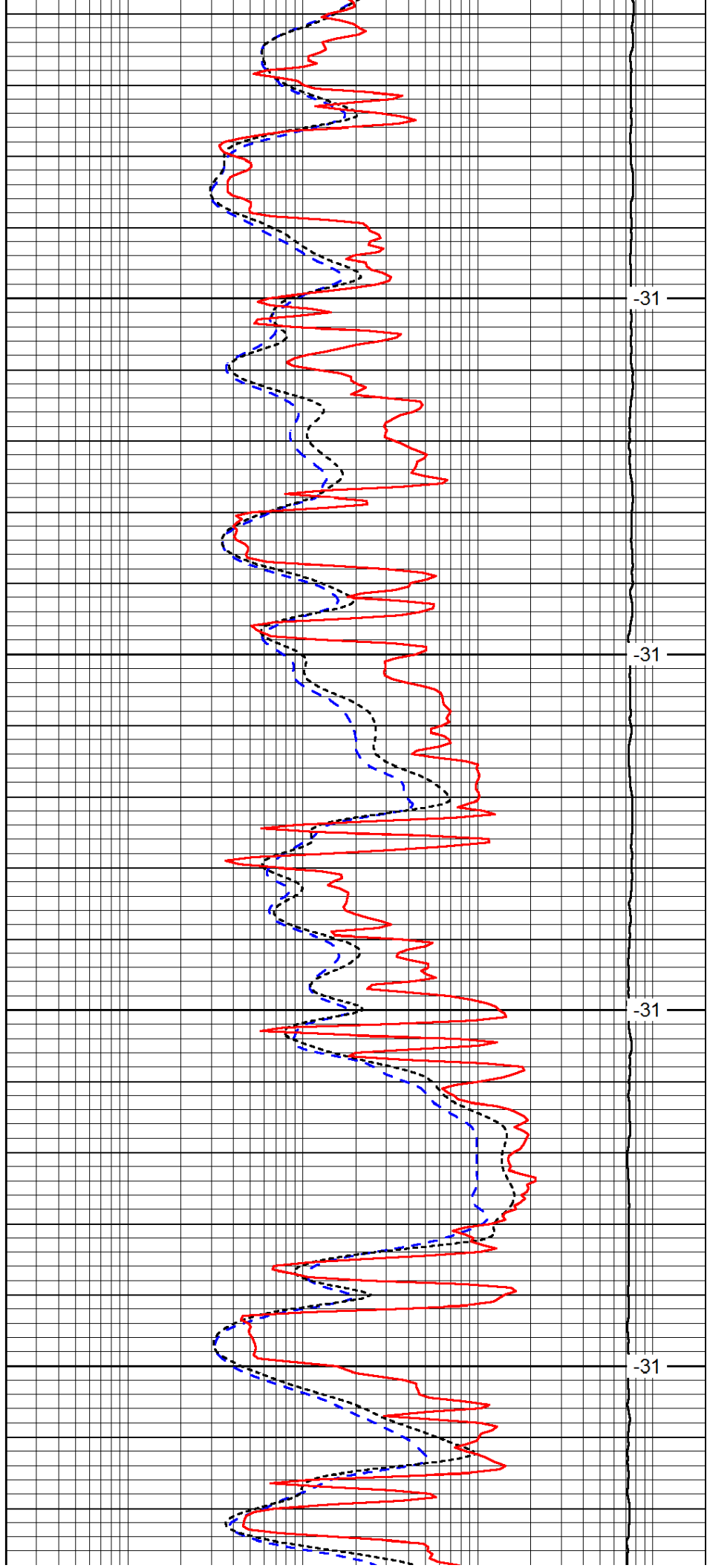


3850

3900

3950

4000

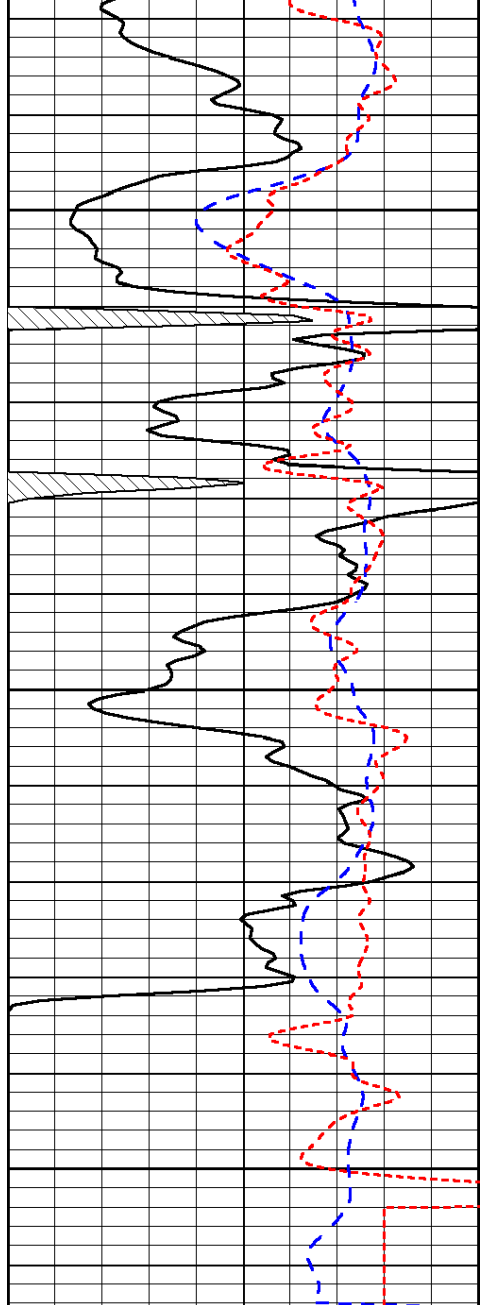


-31

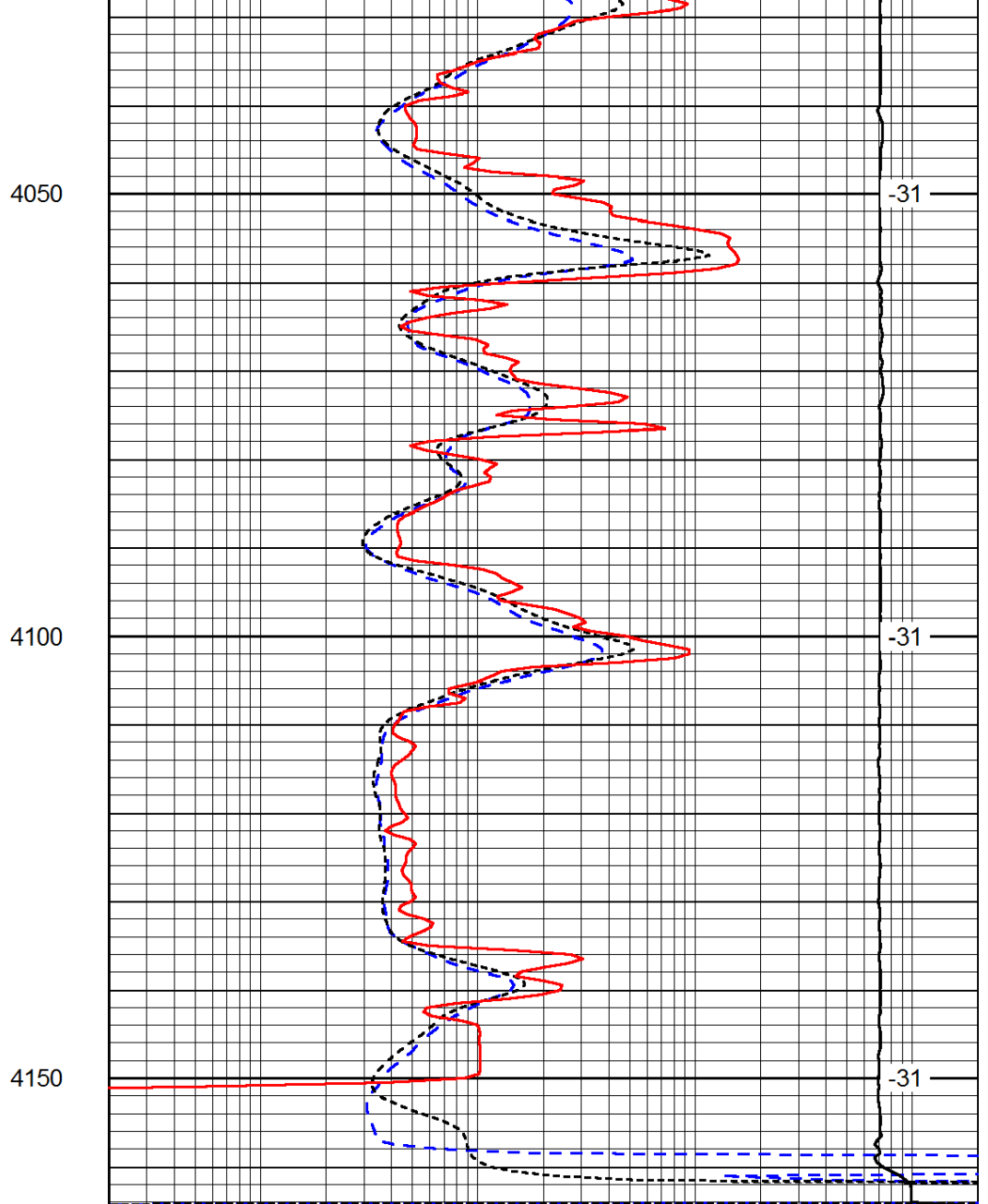
-31

-31

-31



0	Gamma Ray	150
-200	SP (mV)	0
-160	RxoRt	40



0.2	Deep Resistivity	2000
0.2	Medium Resistivity	2000
0.2	Shallow Resistivity	2000
15000	Line Tension	0

LSPD