



Pioneer Energy Services

Microresistivity Log

15-063-22,095-00-00

API No.

Company **6G Twister, Inc.**

Well **Pooh Bah #1**

Field **Trove**

County **Gove** State

Kansas

Location **1650' FNL & 1650' FEL**

Other Services
CNL/CDL
DIL/BHCS

Sec: **25** Twp: **11S** Rge: **26W**

Permanent Datum **Ground Level** Elevation **2541**

Log Measured From **Kelly Bushing** 9 Ft. Above Perm. Datum

Elevation
K.B. 2550
D.F. 2541
G.L. 2541

Date	4/2/2013
Run Number	Two
Depth Driller	4160
Depth Logger	4159
Bottom Logged Interval	4158
Top Log Interval	3500
Casing Driller	8.625 @ 234
Casing Logger	233
Bit Size	7.875
Type Fluid in Hole	Chemical
Salinity,ppm CL	1,600
Density / Viscosity	9.2 56
pH / Fluid Loss	10.0 7.4
Source of Sample	Flowline
Rm @ Meas. Temp	1.4 @ 52
Rmf @ Meas. Temp	1.05 @ 52
Rmc @ Meas. Temp	1.89 @ 52
Source of Rmf / Rmc	Charts
Rm @ BHT	.62 @ 118
Operating Rig Time	4 Hours
Max Rec. Temp. F	118
Equipment Number	17
Location	Hays
Recorded By	C. Desaire
Witnessed By	Clayton Erickson

<<< Fold Here >>>

All interpretations are opinions based on inferences from electrical or other measurements and we cannot and do not guarantee the accuracy or correctness of any interpretation, and we shall not, except in the case of gross or willful negligence on our part, be liable or responsible for any loss, costs, damages, or expenses incurred or sustained by anyone resulting from any interpretation made by any of our officers, agents or employees. These interpretations are also subject to our general terms and conditions set out in our current Price Schedule.

Comments

Thank you for using Pioneer Energy Services
www.pioneerres.com
 785 625 3858

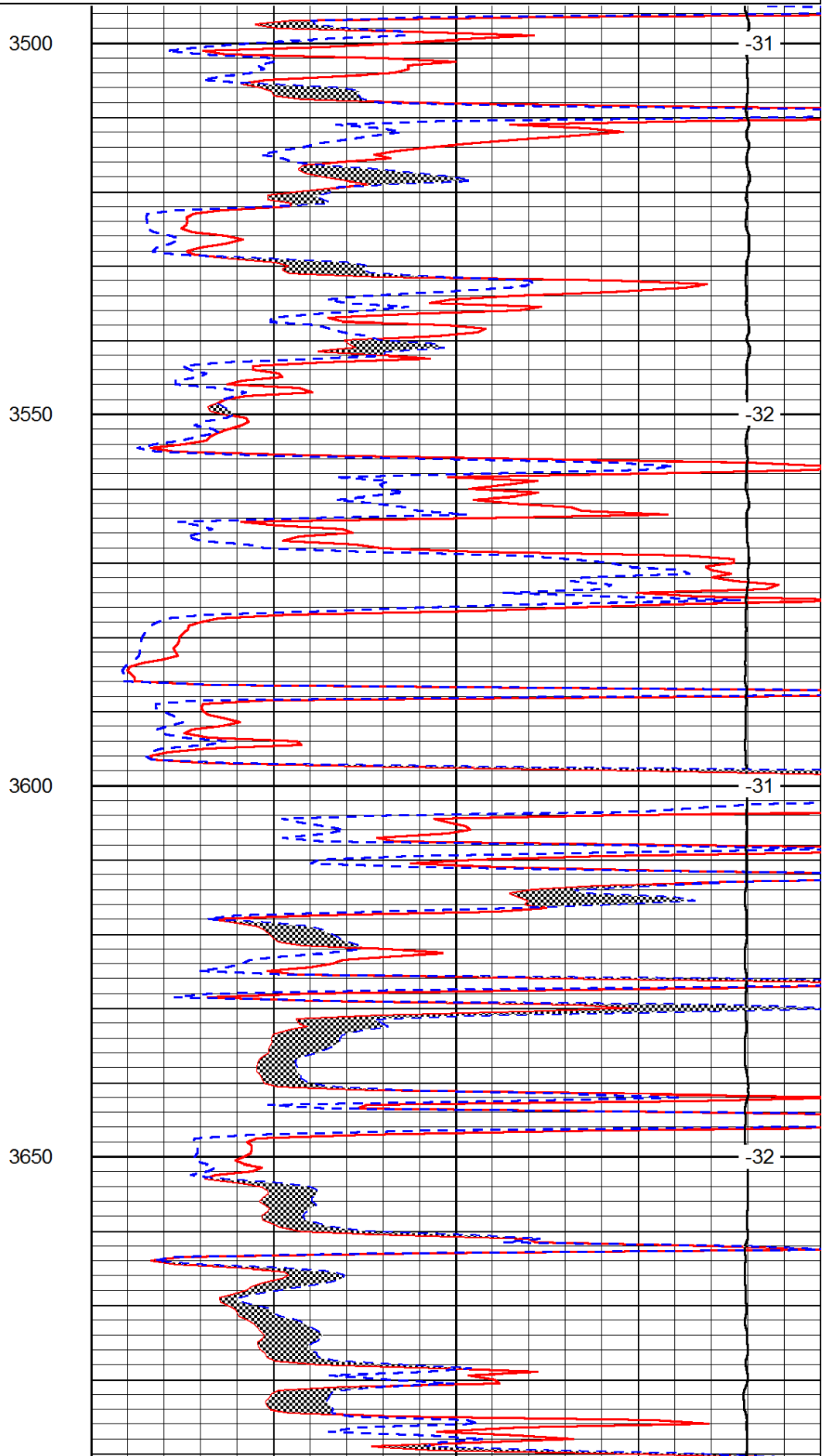
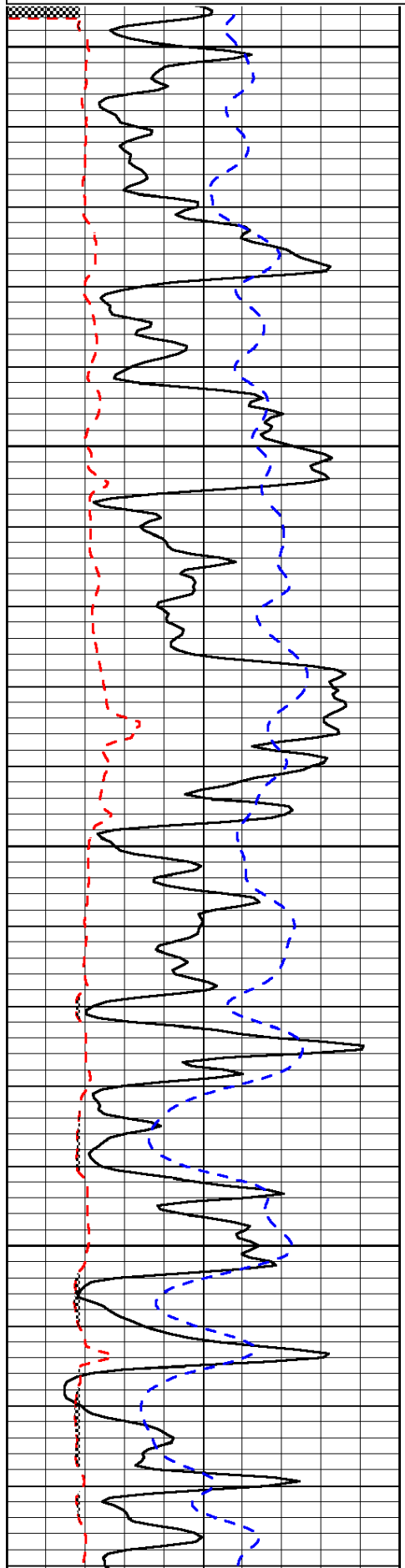
Quinter KS, N Edge (AA Rd),
 4 7/8 E, SE Through Cattle Guard, S Into

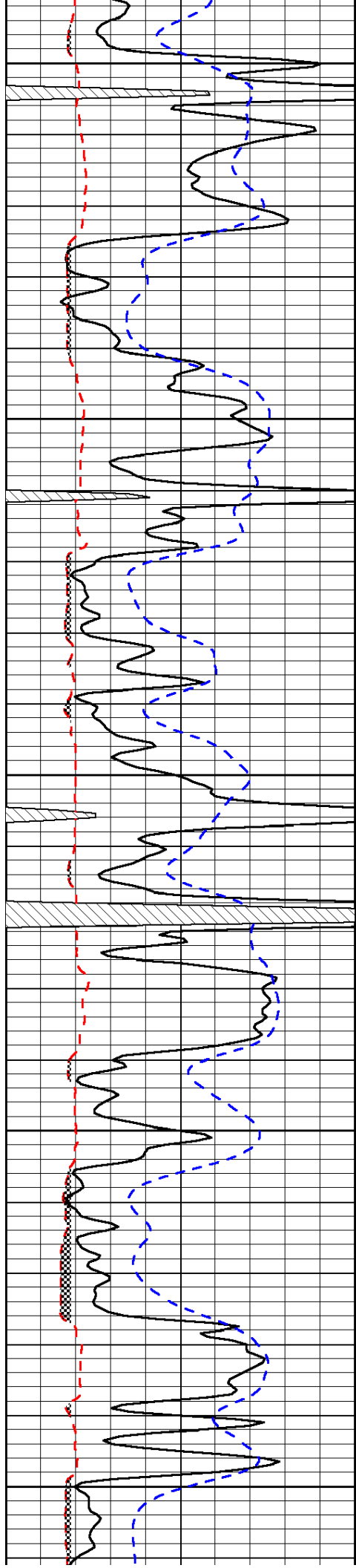
Database File: c:\warrior\data\6 g twister_pooh bah #1\twisthd.db
 Dataset Pathname: dil/twststk
 Presentation Format: micro
 Dataset Creation: Wed Apr 03 00:23:19 2013
 Charted by: Depth in Feet scaled 1:240

0	Gamma Ray	150
6	Micro Log Caliper (GAPI)	16
-200	SP (mV)	0

0	Micro Inverse 1 X 1	40
0	Micro Normal 2"	40
15000	Line Weight	0

LSPD





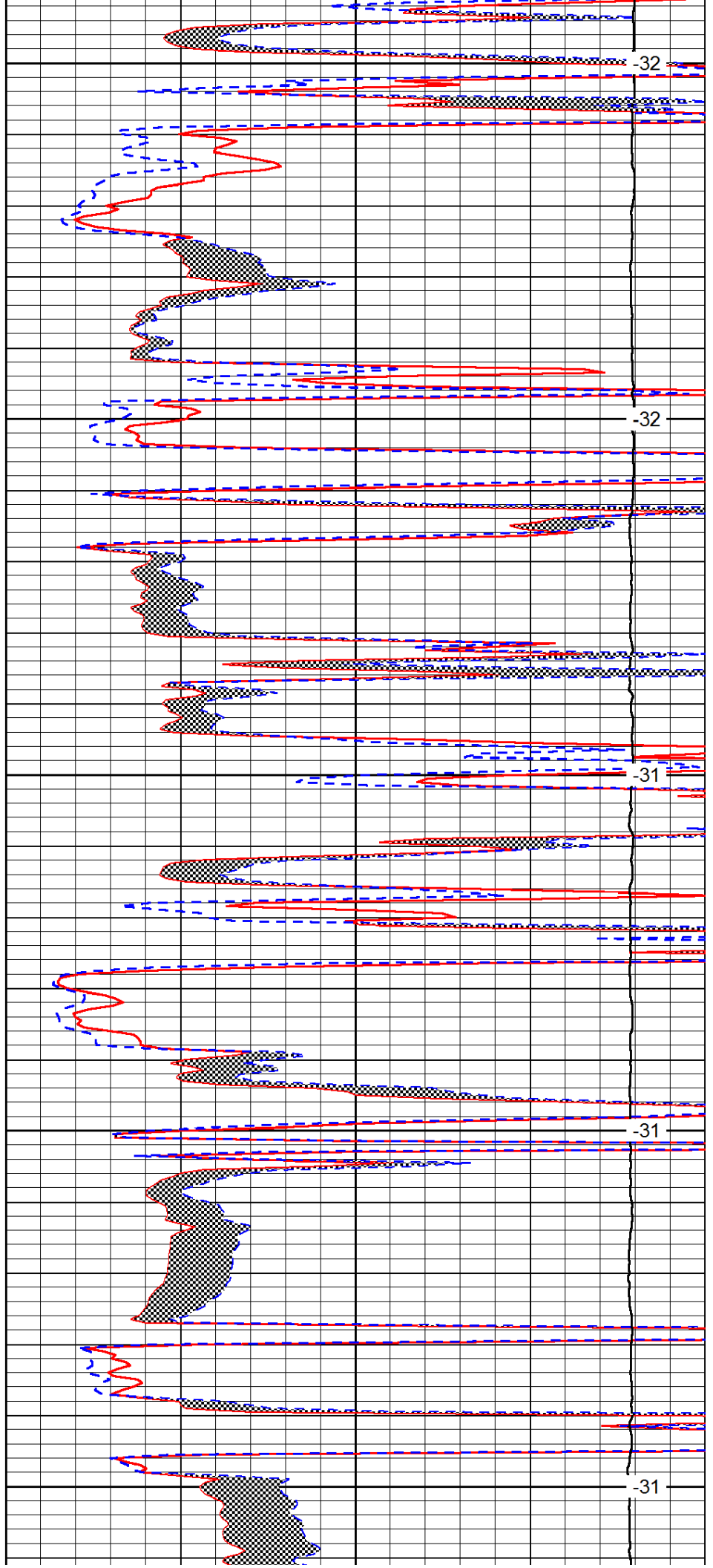
3700

3750

3800

3850

3900



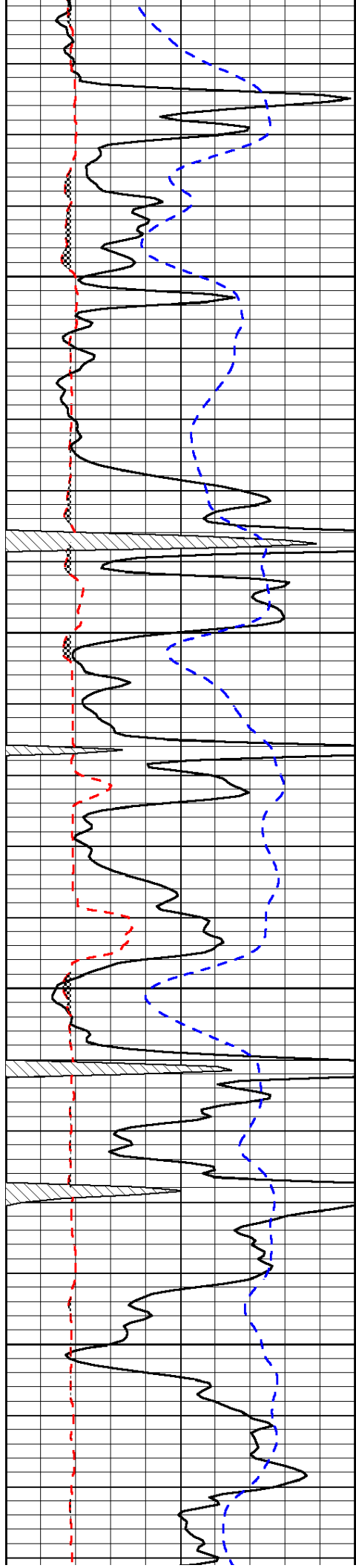
-32

-32

-31

-31

-31

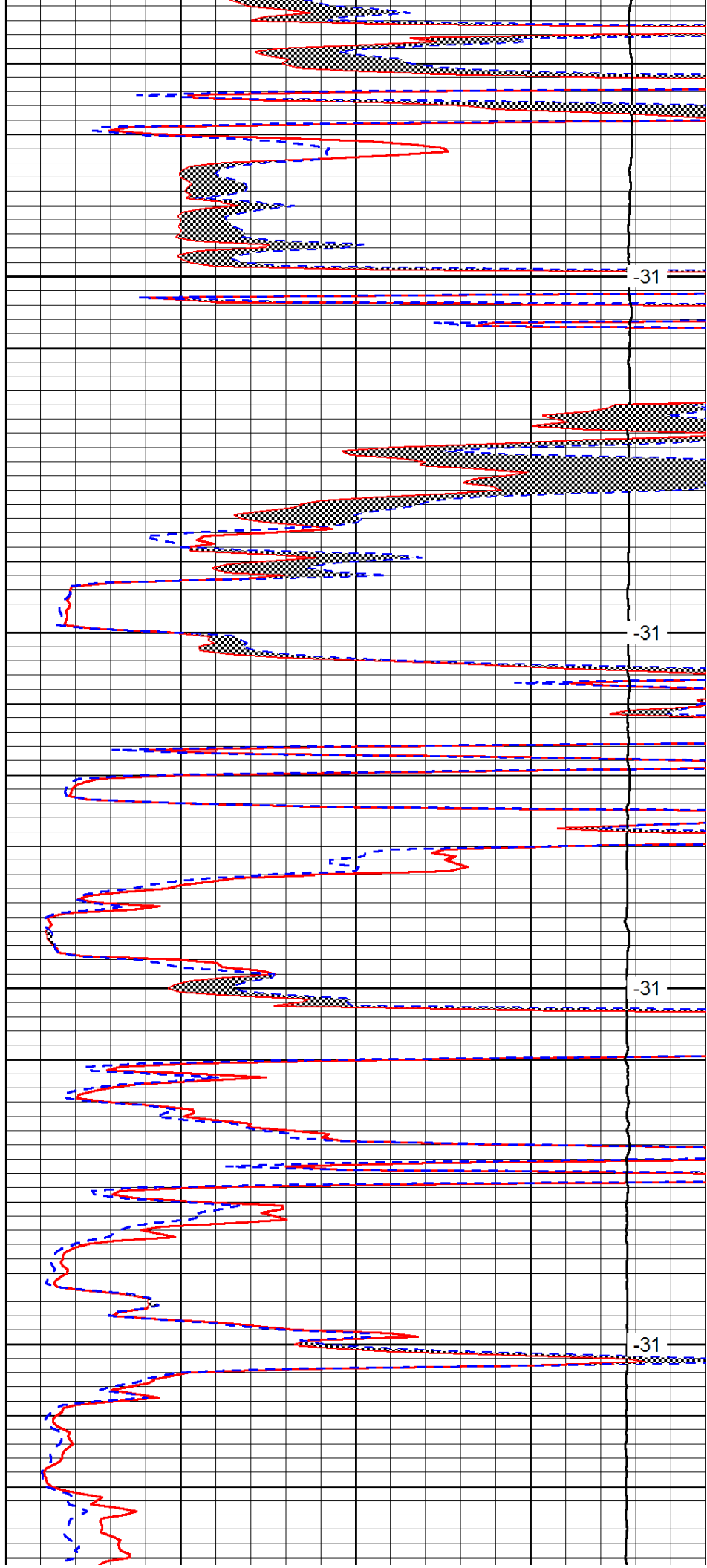


3950

4000

4050

4100

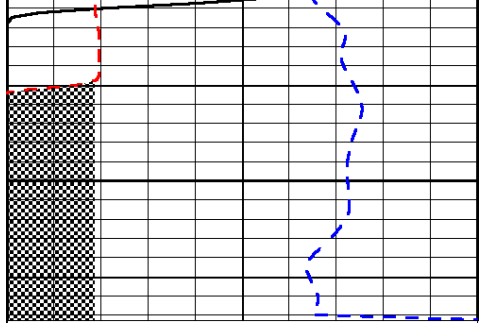


-31

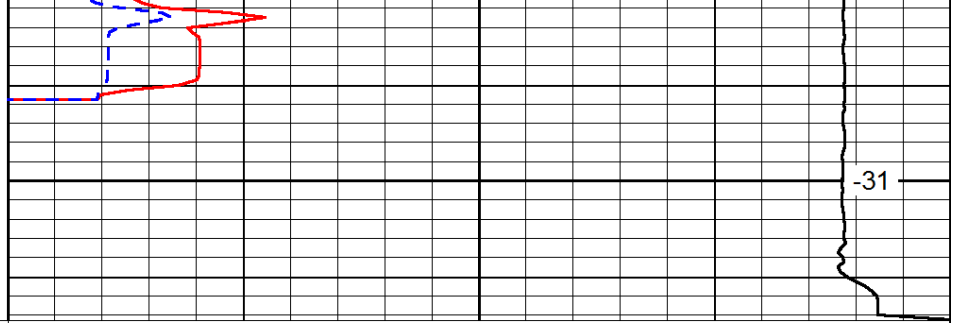
-31

-31

-31



4150



0	Gamma Ray	150
6	Micro Log Caliper (GAPI)	16
-200	SP (mV)	0

0	Micro Inverse 1 X 1	40
0	Micro Normal 2"	40
15000	Line Weight	0

LSPD