



Pioneer Energy Services

Borehole Compensated Sonic Log

15-063-22,095-00-00

API No.

Company **6G Twister, Inc.**
Well **Pooh Bah #1**
Field **Trove**
County **Gove**

State **Kansas**

Location
1650' FNL & 1650' FEL

Sec: **25** Twp: **11S** Rge: **26W**

Other Services
CNL/CDL
MEL/DIL

Elevation

K.B. 2550
D.F. 2541
G.L. 2541

Permanent Datum Ground Level Elevation 2541
Log Measured From Kelly Bushing 9 Ft. Above Perm. Datum
Drilling Measured From Kelly Bushing

Date **4/2/2013**

Run Number **Two**

Type Log **BHC Sonic**

Depth Driller **4160**

Depth Logger **4159**

Bottom Logged Interval **4148**

Top Logged Interval **200**

Type Fluid In Hole **Chemical**

Salinity, PPM CL **1,600**

Density **9.2**

Level **Full**

Max. Rec. Temp. F **118**

Operating Rig Time **4 Hours**

Equipment -- Location **17 Hays**

Recorded By **C. Desaire**

Witnessed By **Clayton Erickson**

Borehole Record

Casing Record

Run No.	Bit	From	To	Size	Wgt.	From	To
1	12.25	00	234	8.625	24#	00	234
2	7.875	234	4160				

<<< Fold Here >>>

All interpretations are opinions based on inferences from electrical or other measurements and we cannot and do not guarantee the accuracy or correctness of any interpretation, and we shall not, except in the case of gross or willful negligence on our part, be liable or responsible for any loss, costs, damages, or expenses incurred or sustained by anyone resulting from any interpretation made by any of our officers, agents or employees. These interpretations are also subject to our general terms and conditions set out in our current Price Schedule.

Comments

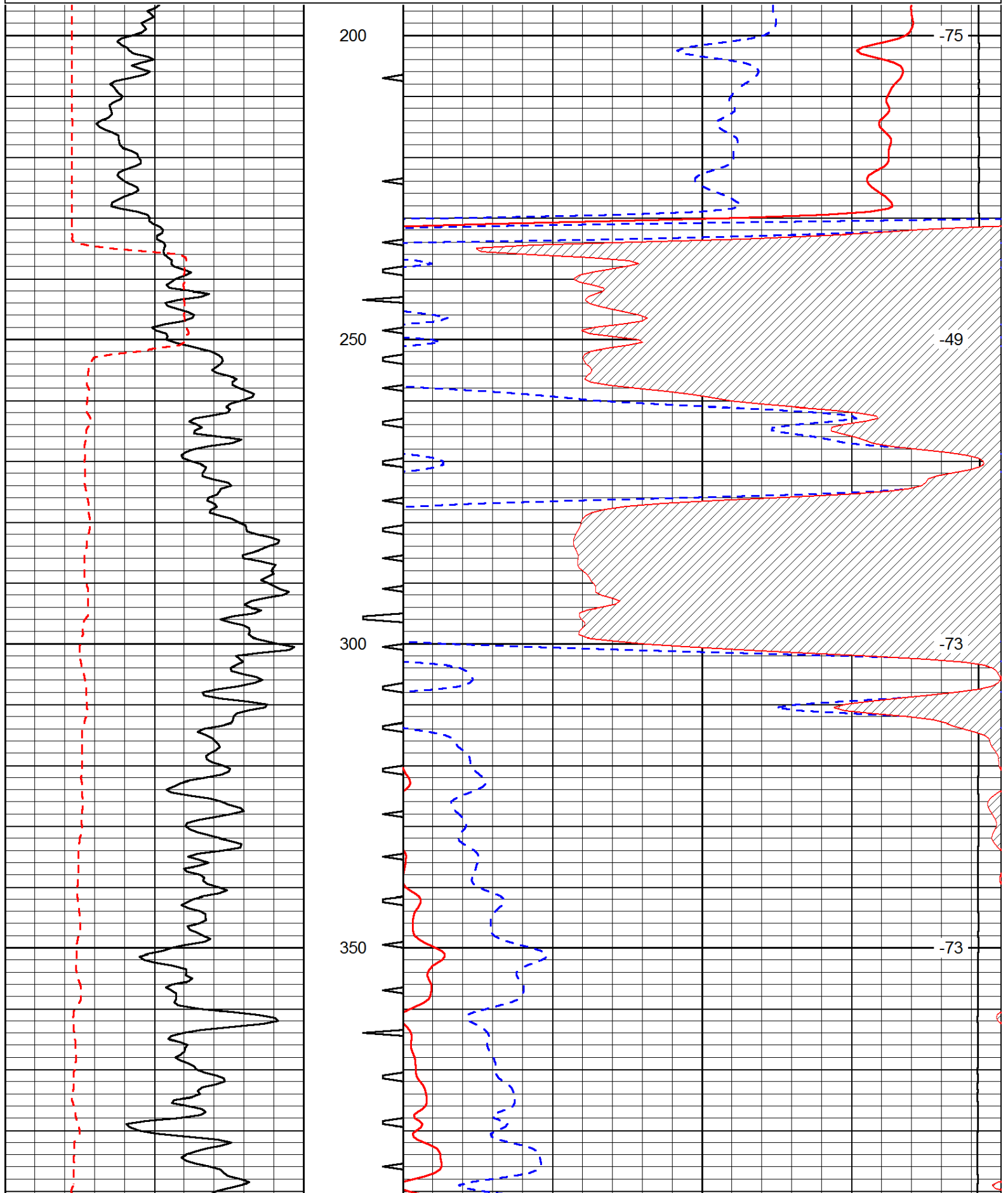
Thank you for using Pioneer Energy Services
www.pioneerres.com
785 625 3858

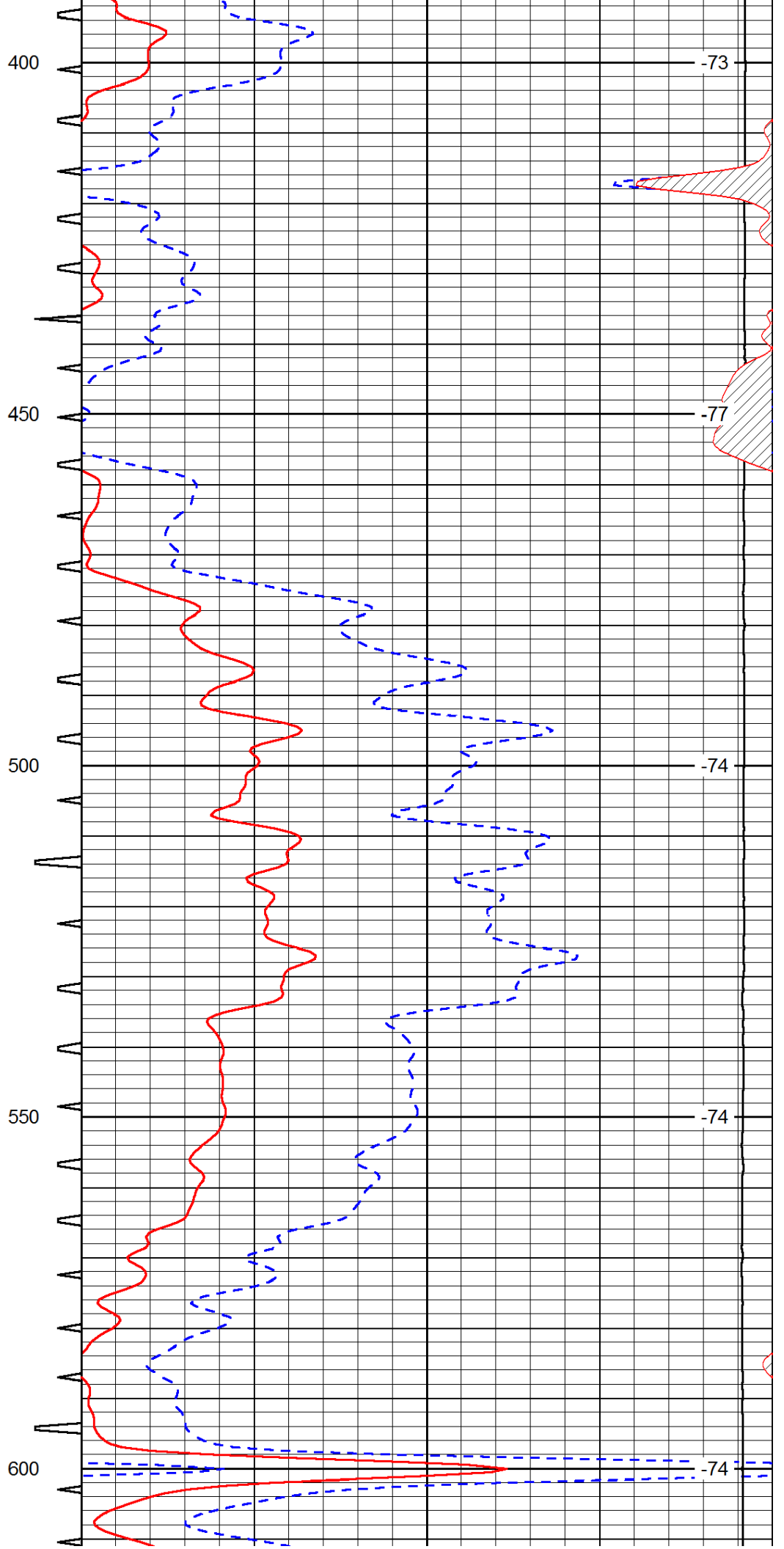
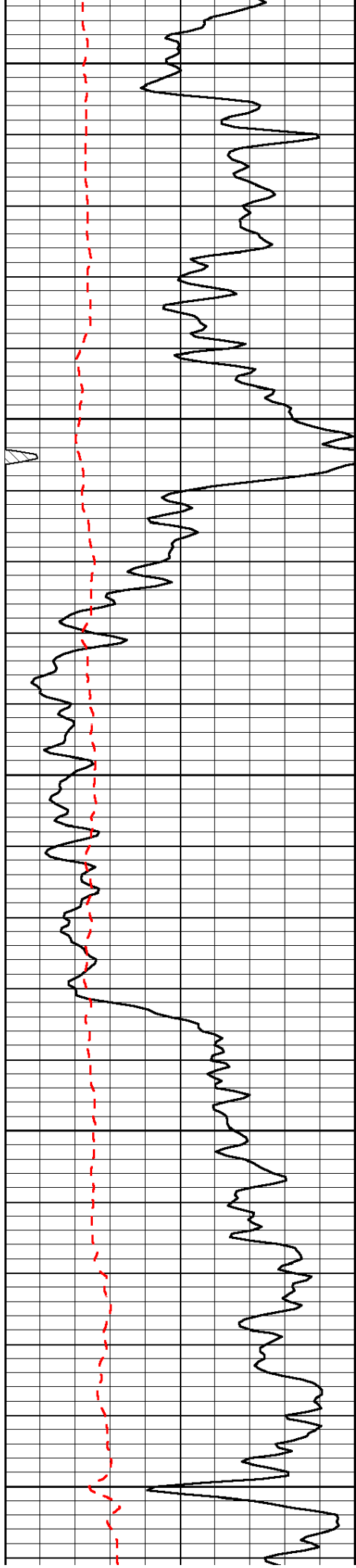
Quinter KS, N Edge (AA Rd),
4 7/8 E, SE Through Cattle Guard, S Into

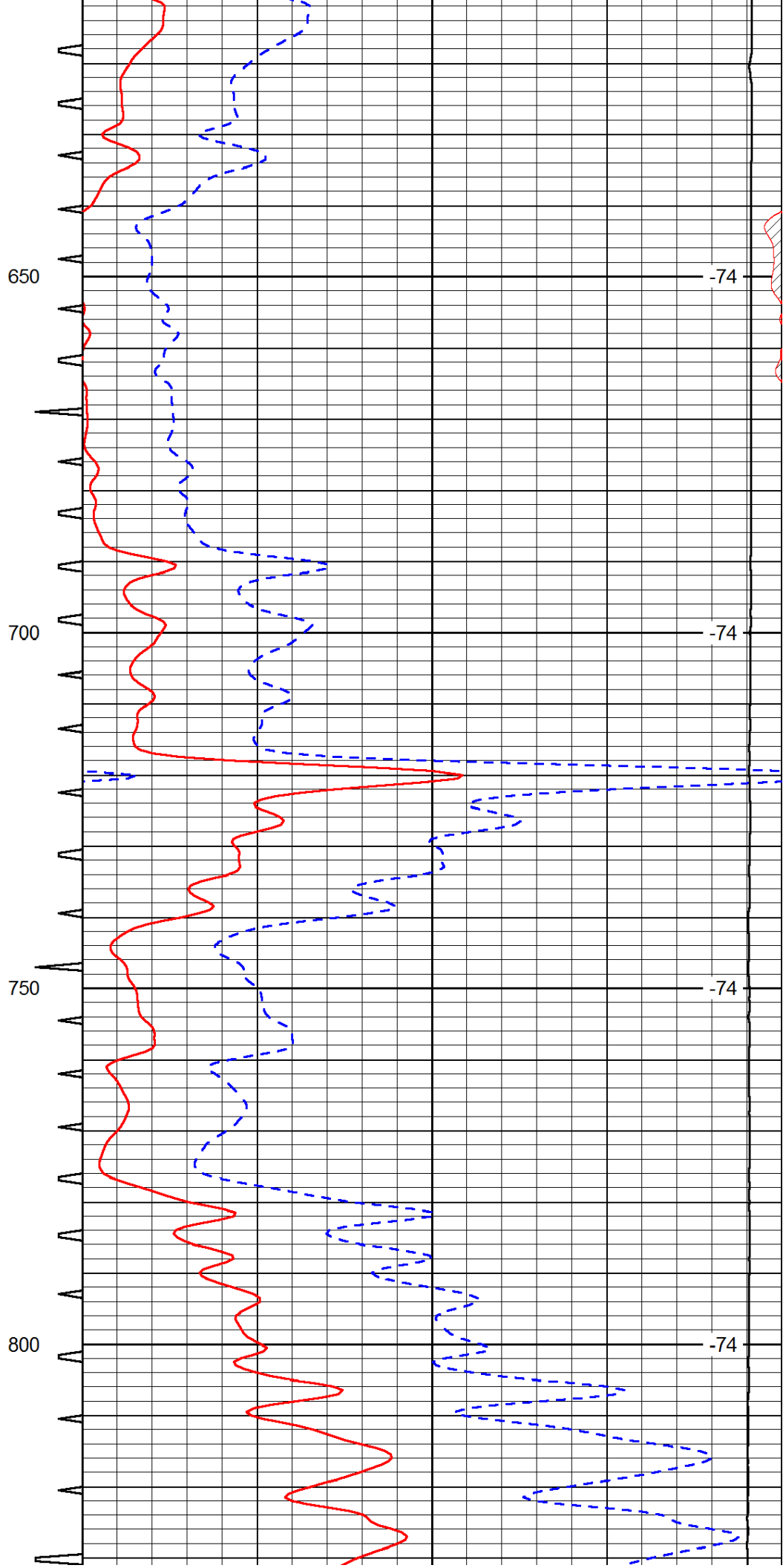
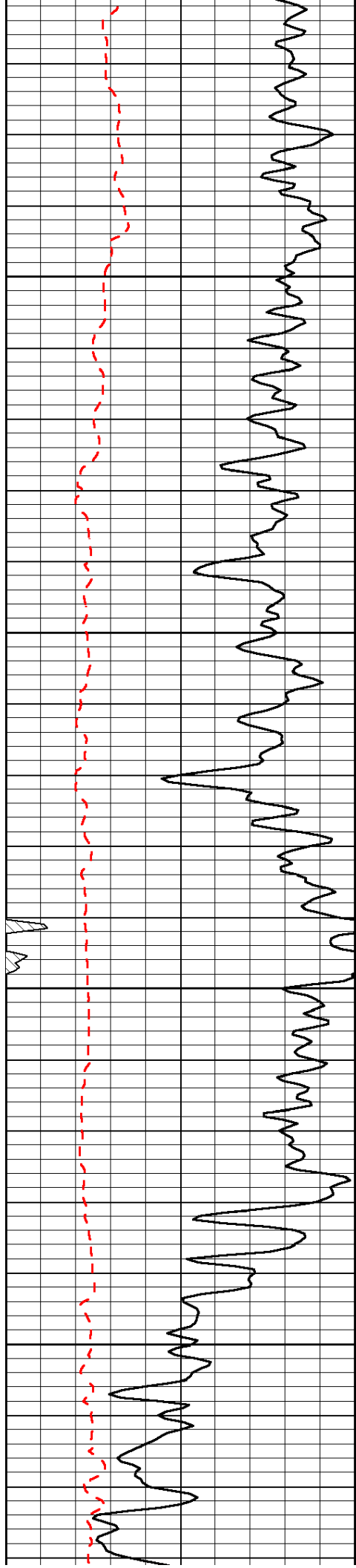
Database File: c:\warrior\data\6 g twister_pooh bah #1\twisthd.db
Dataset Pathname: dil/twststk
Presentation Format: sonic
Dataset Creation: Wed Apr 03 00:23:19 2013
Charted by: Depth in Feet scaled 1:240

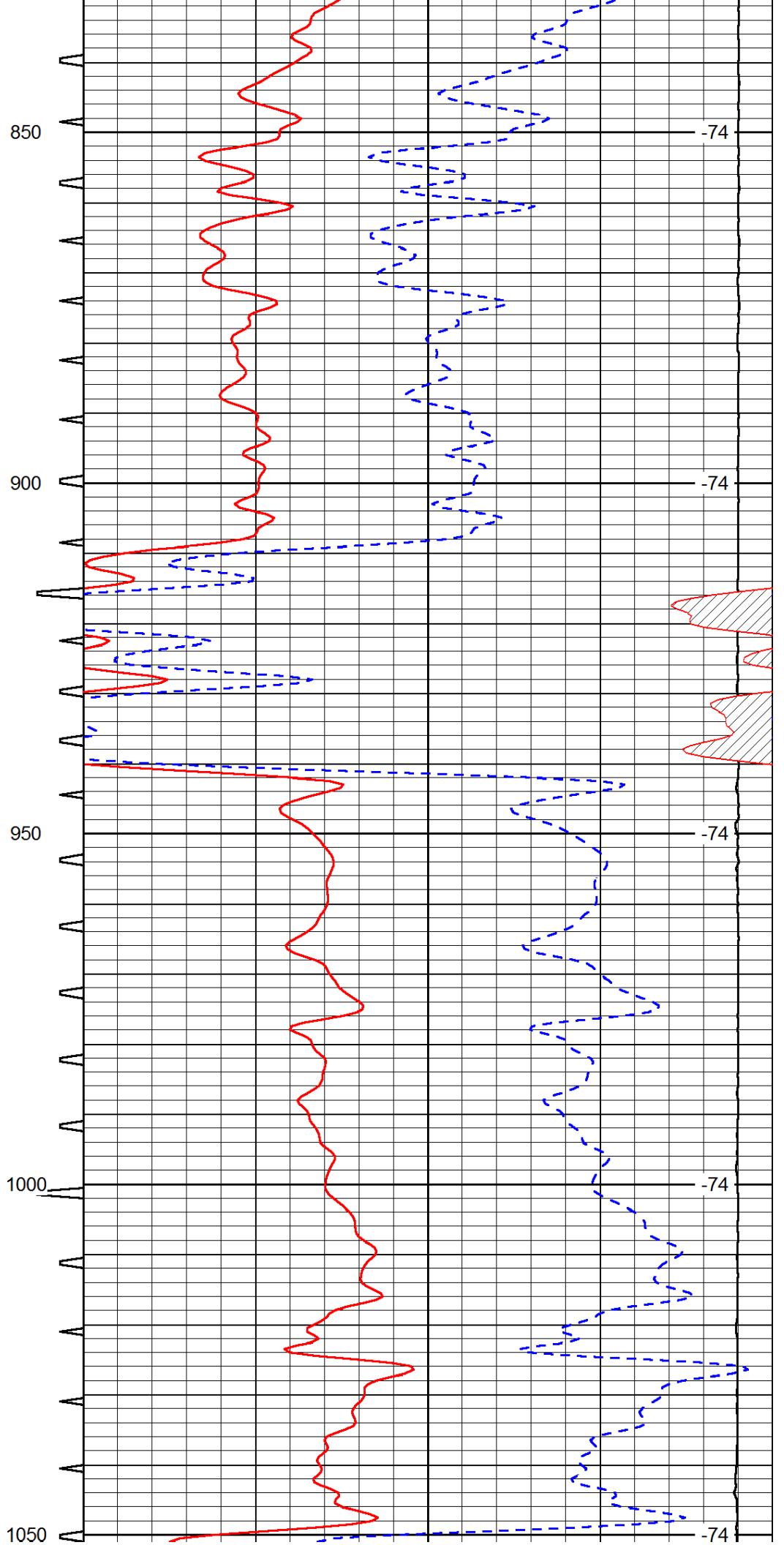
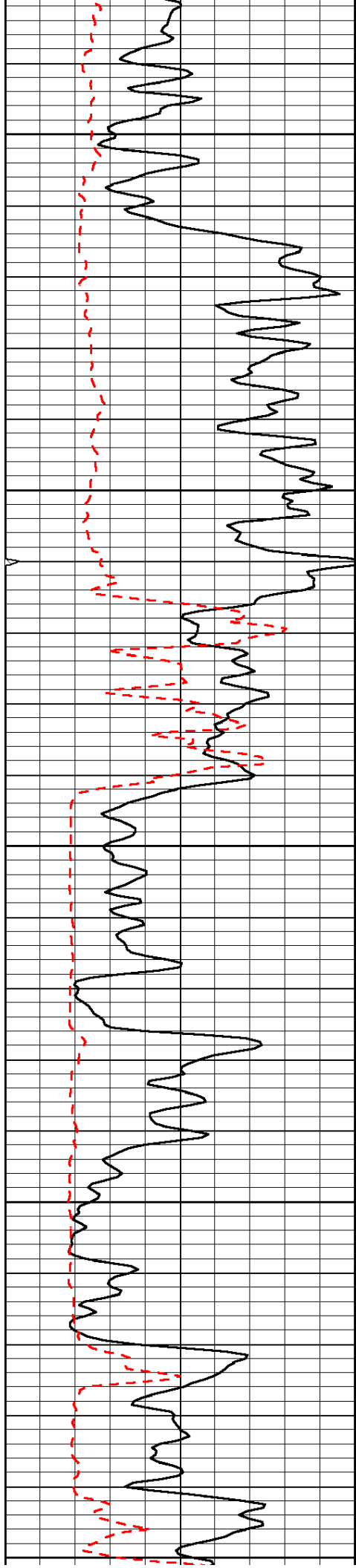
0	Gamma Ray	150	Sonic Int	140	Delta Time (usec/ft)	40
150	Gamma Ray	300	5	0	SPOR	-10
6	Caliper (GAPI)	16		15000	LTEN (lb)	0

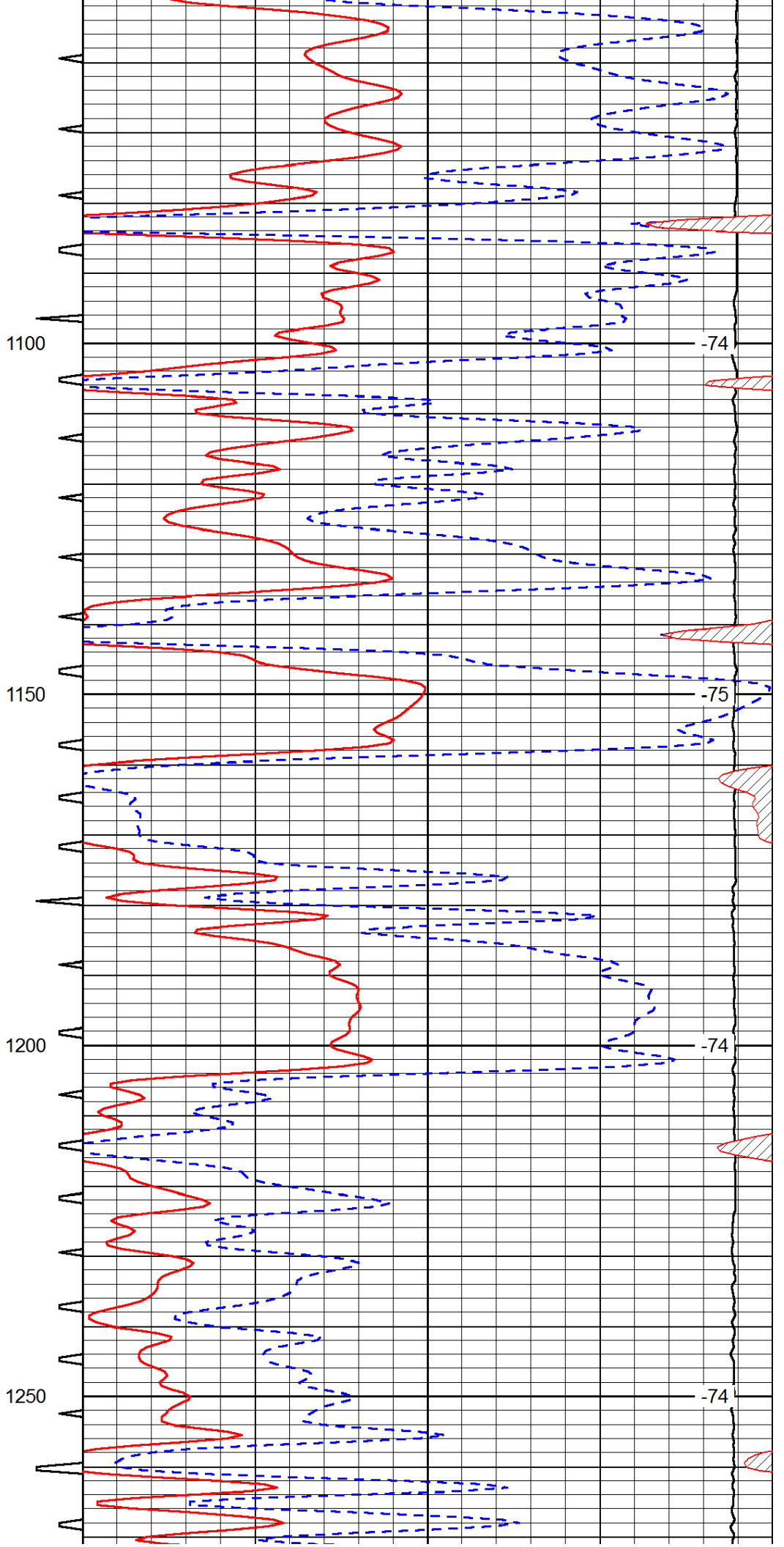
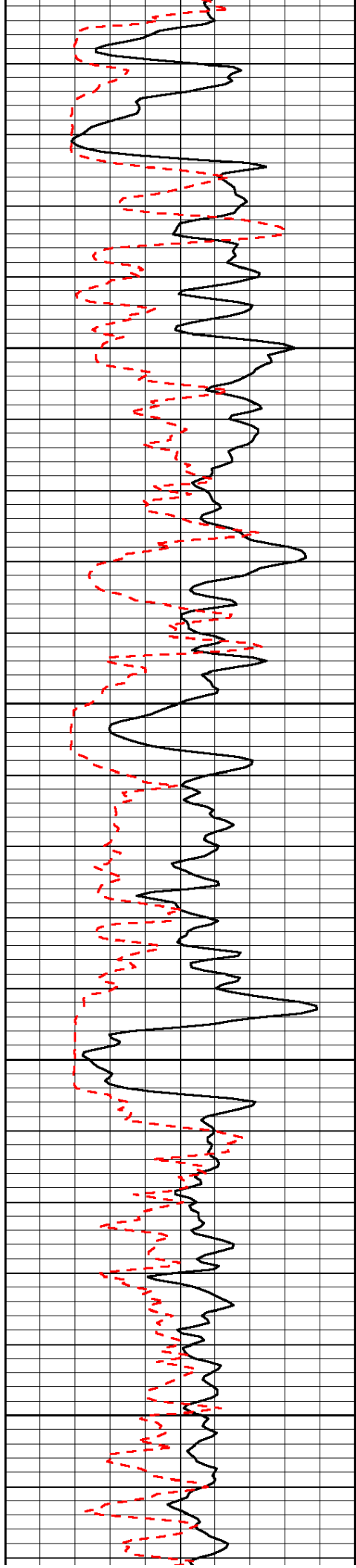
LSPD

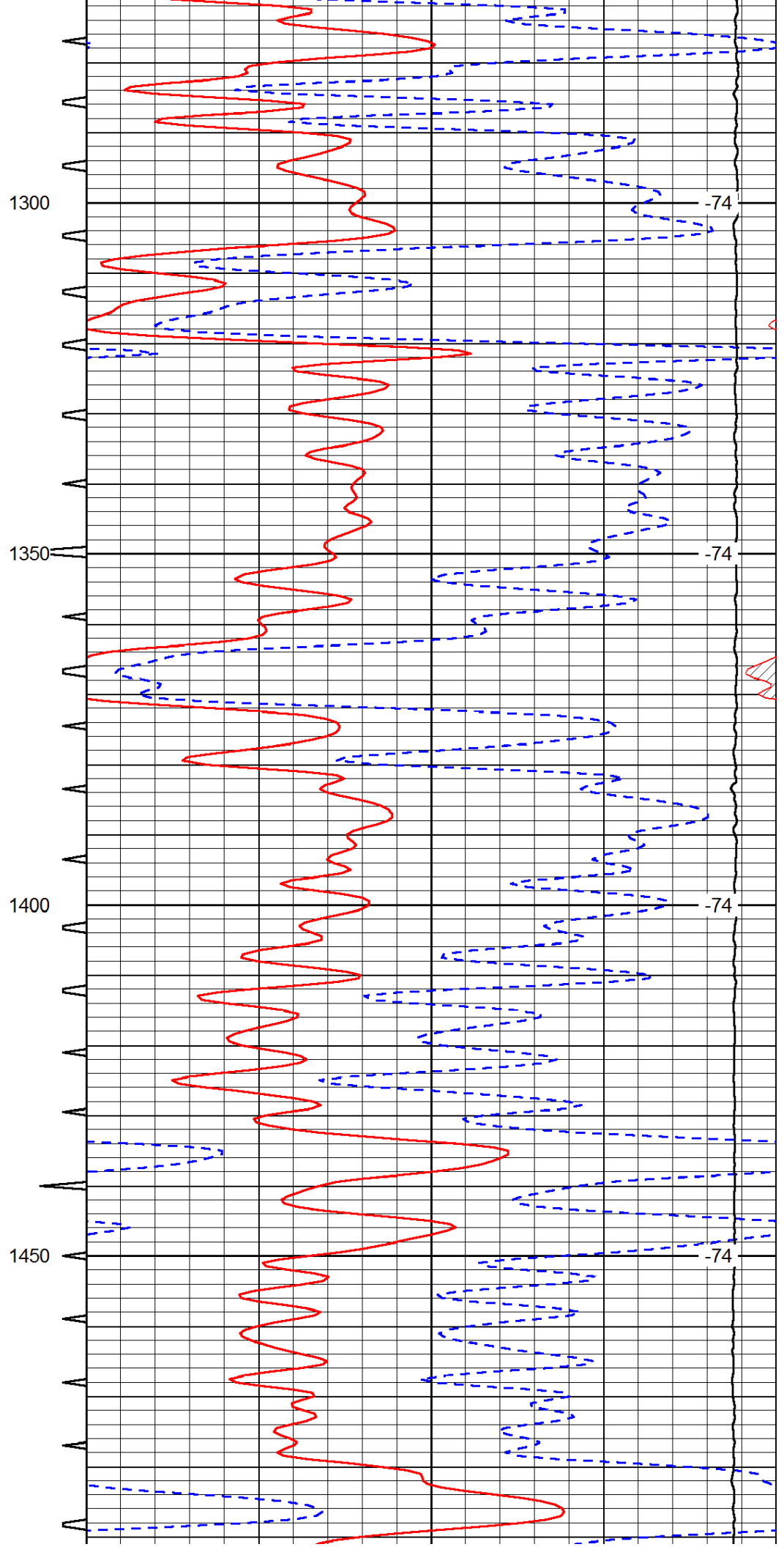
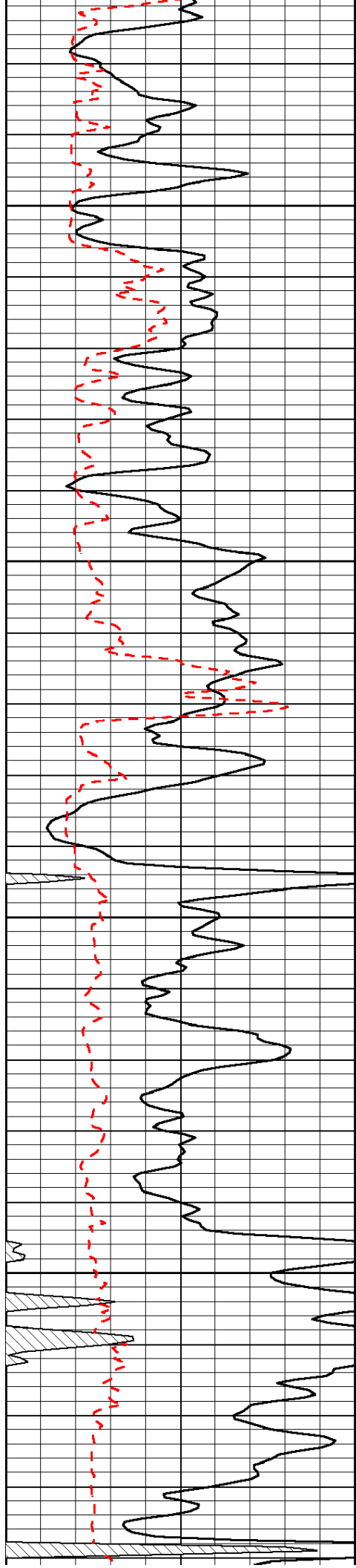


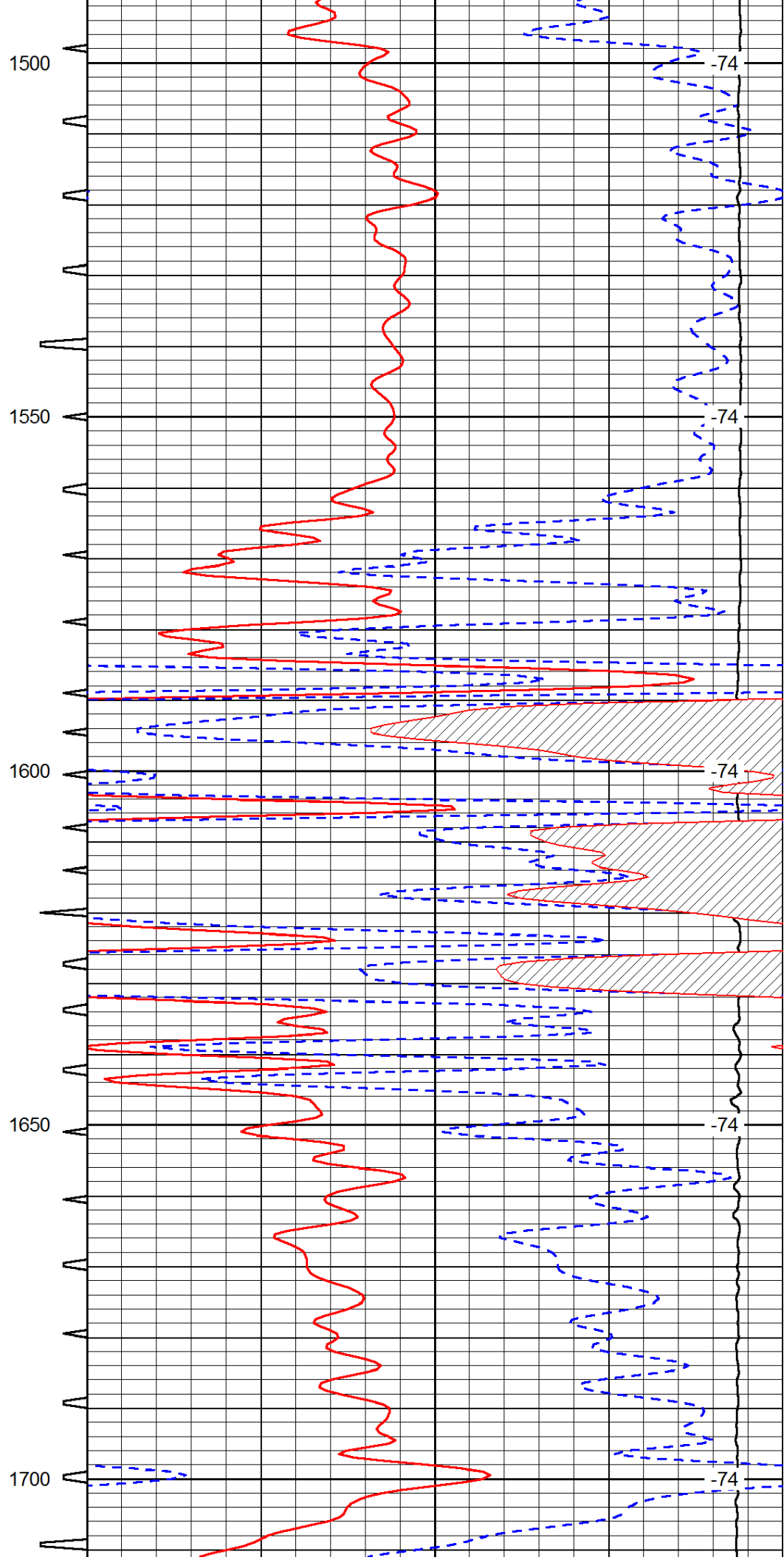
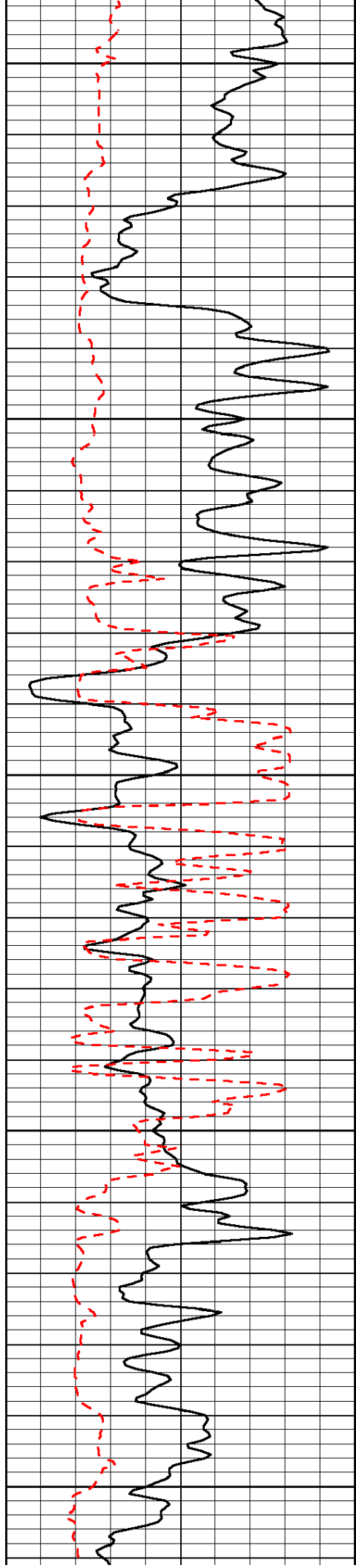


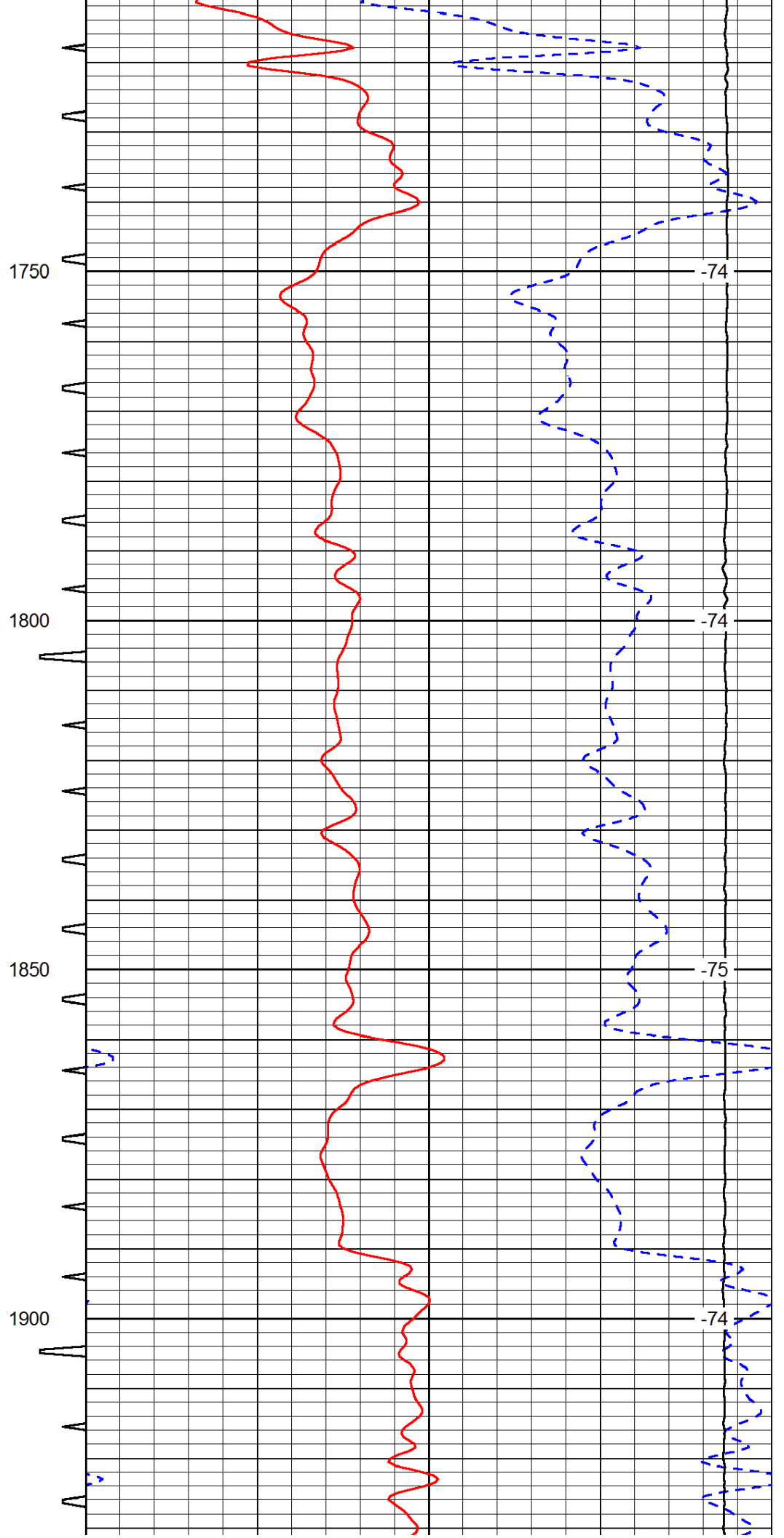
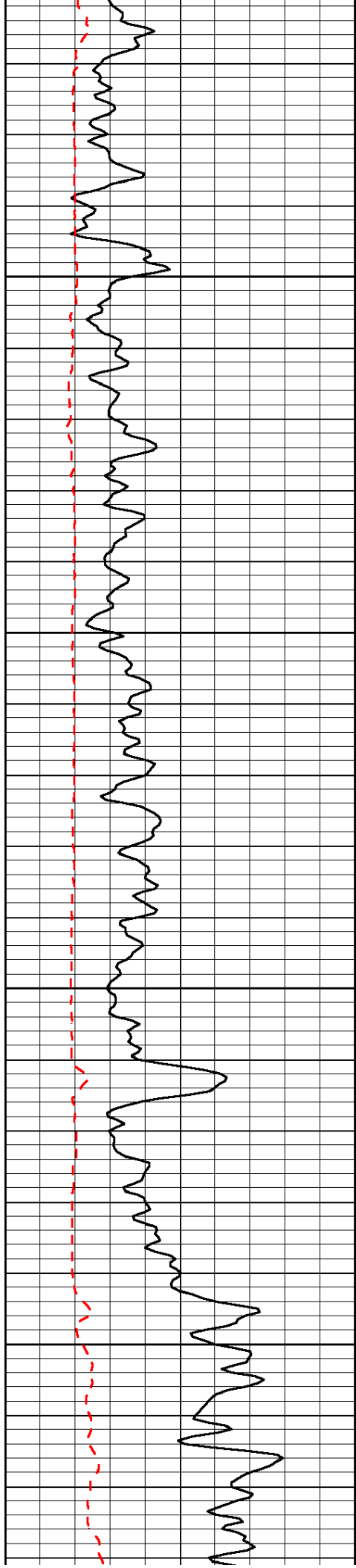


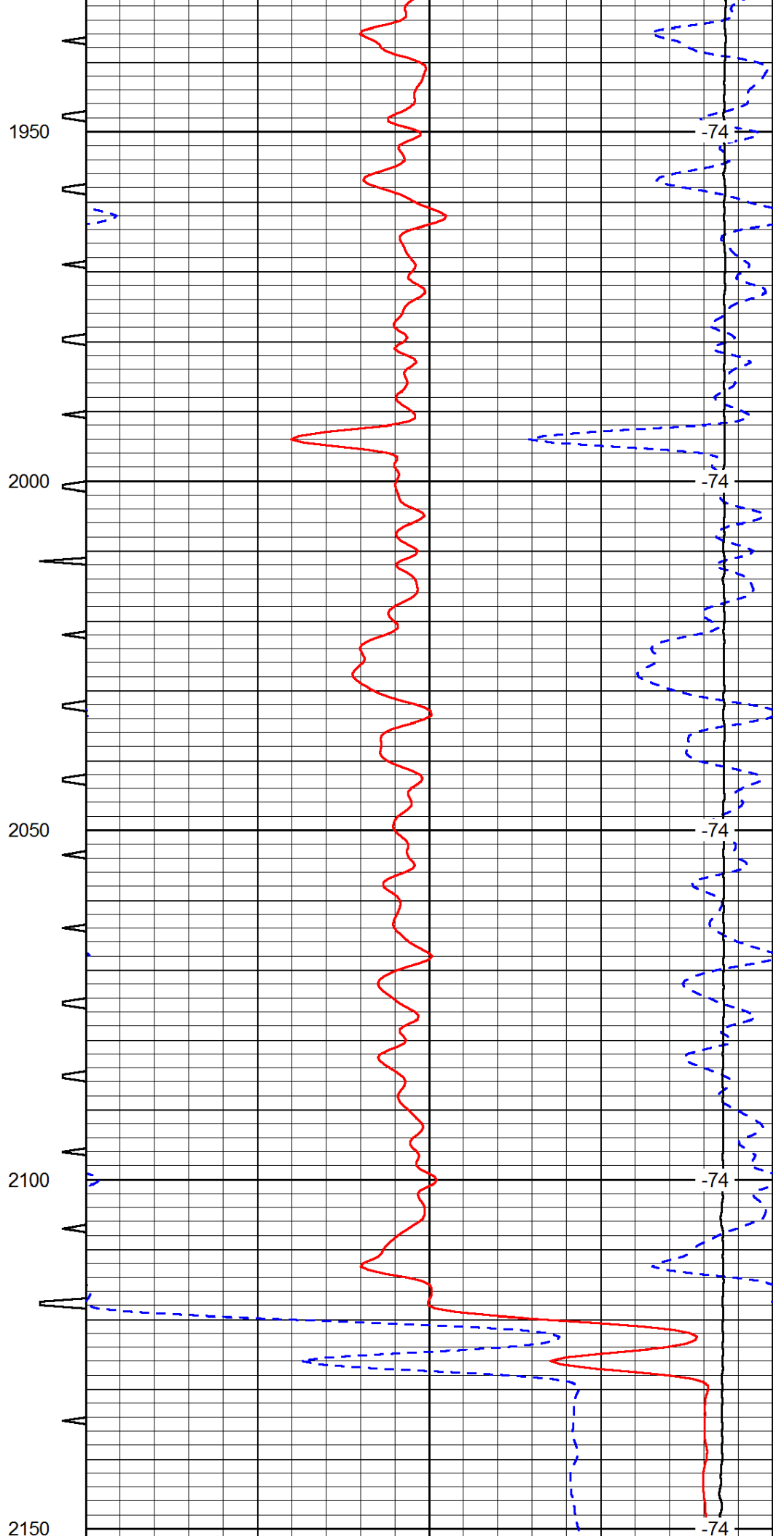
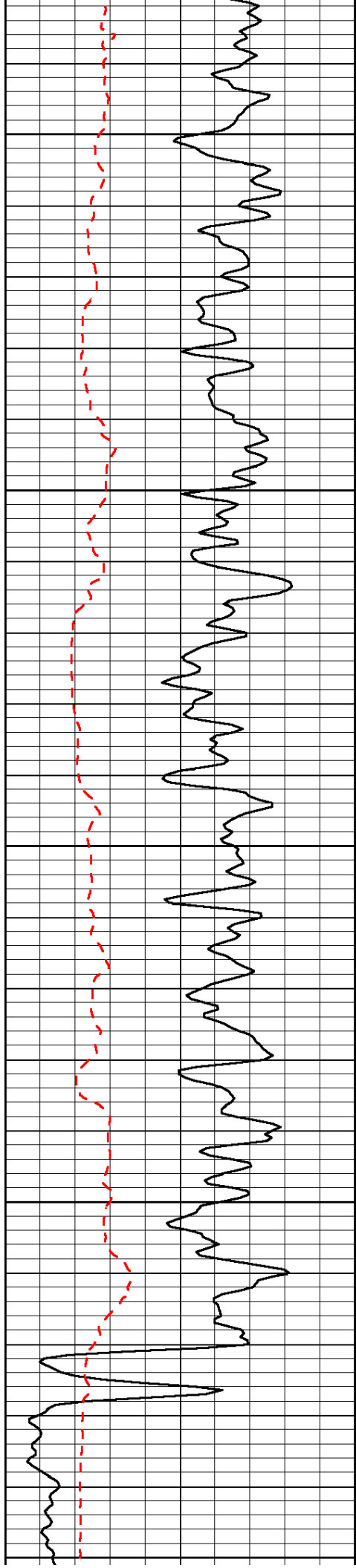


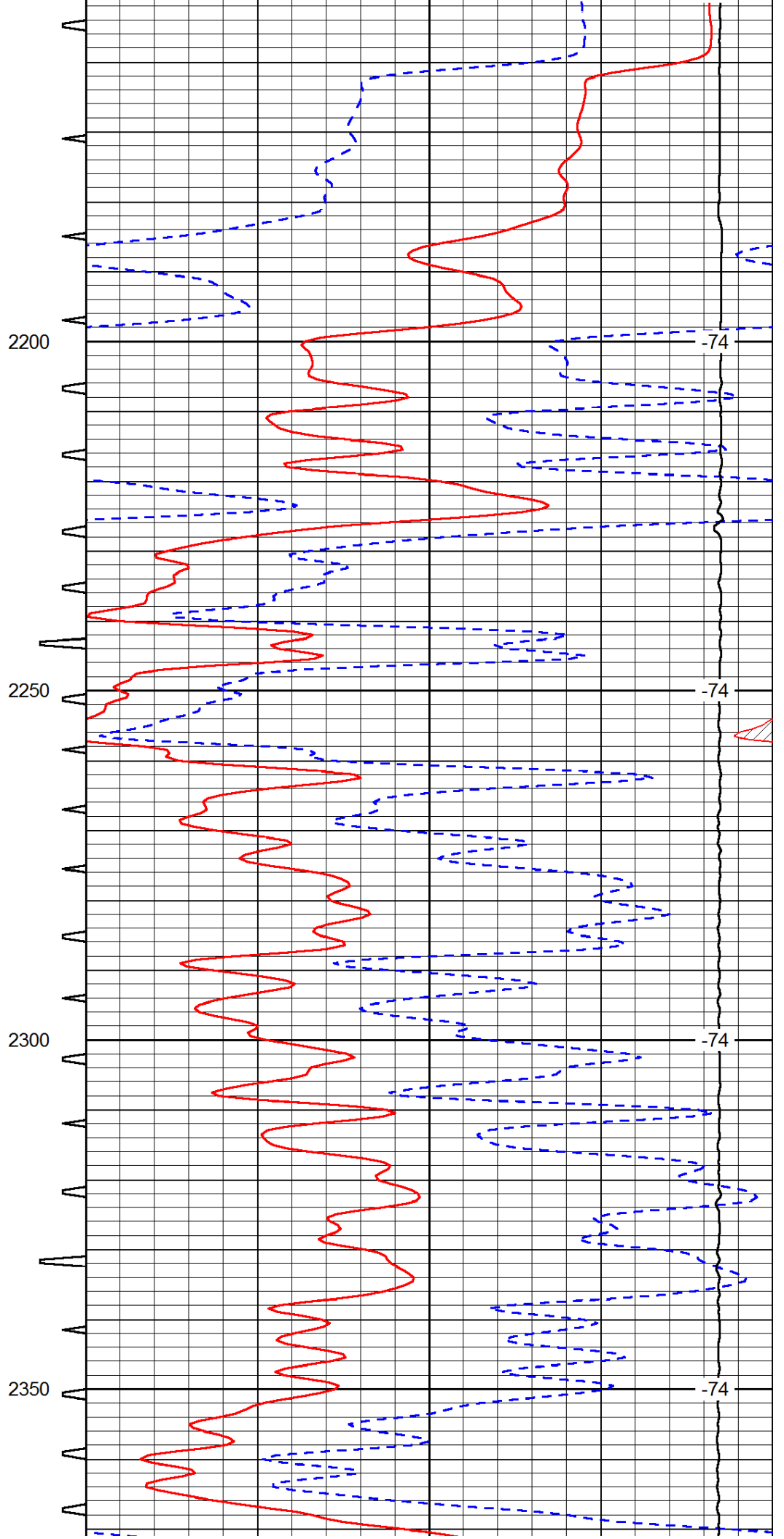
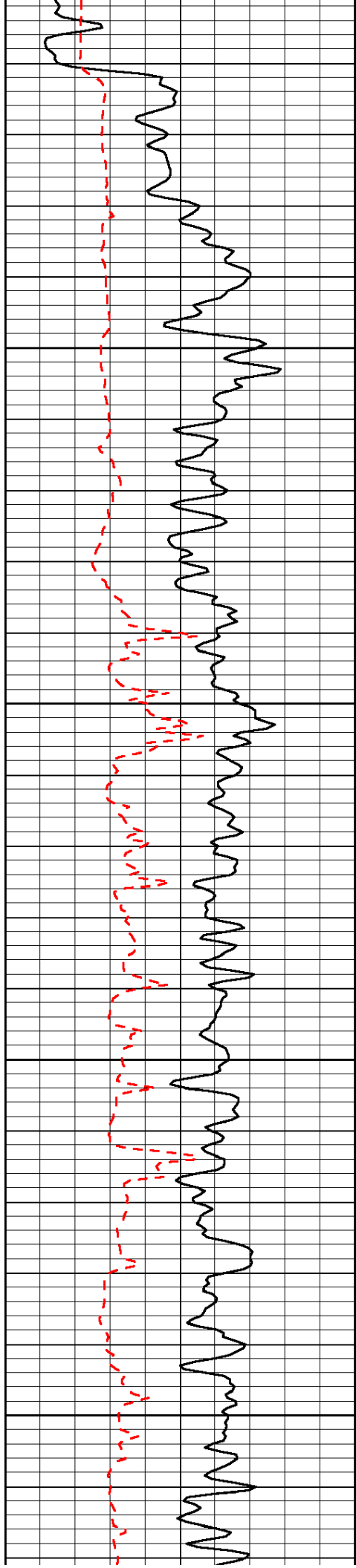


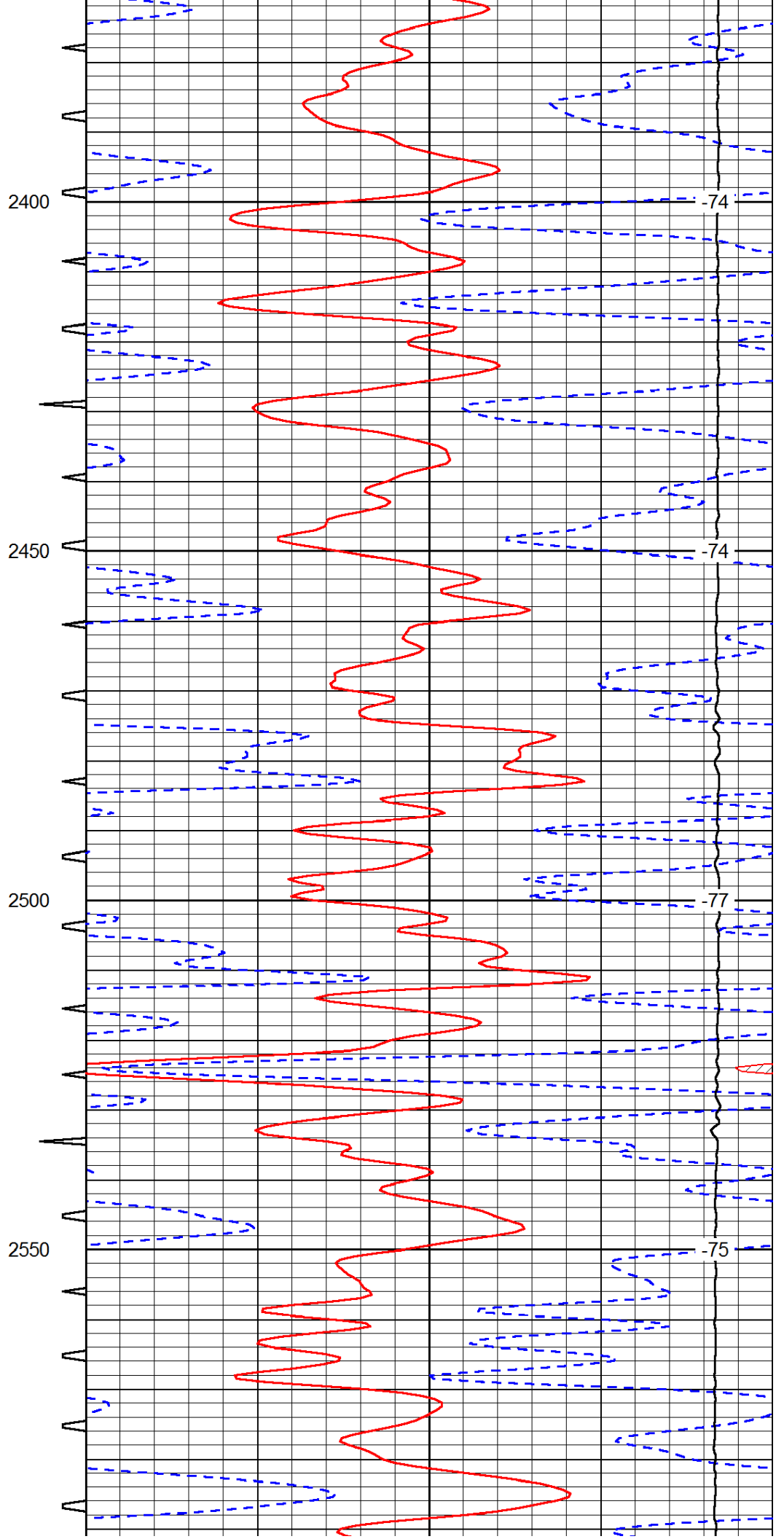
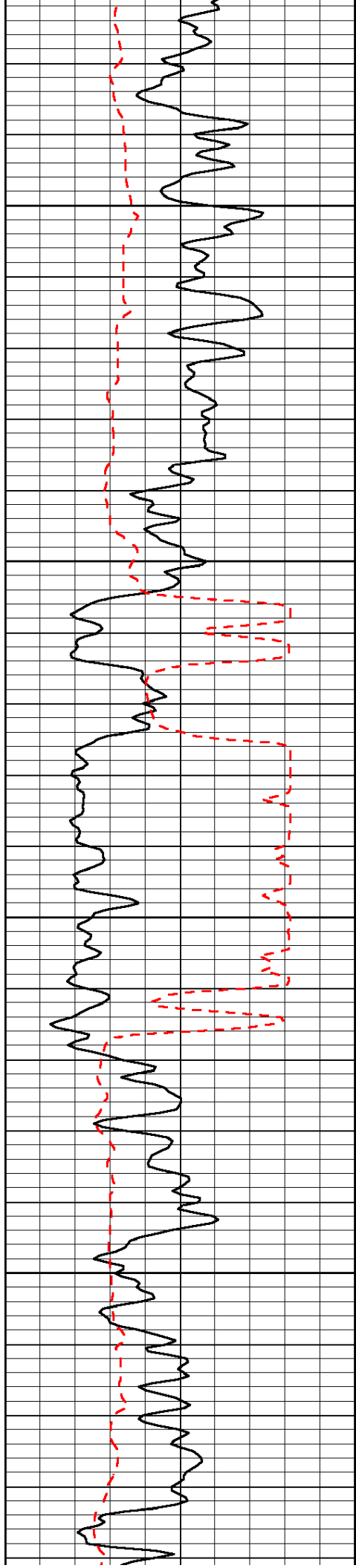


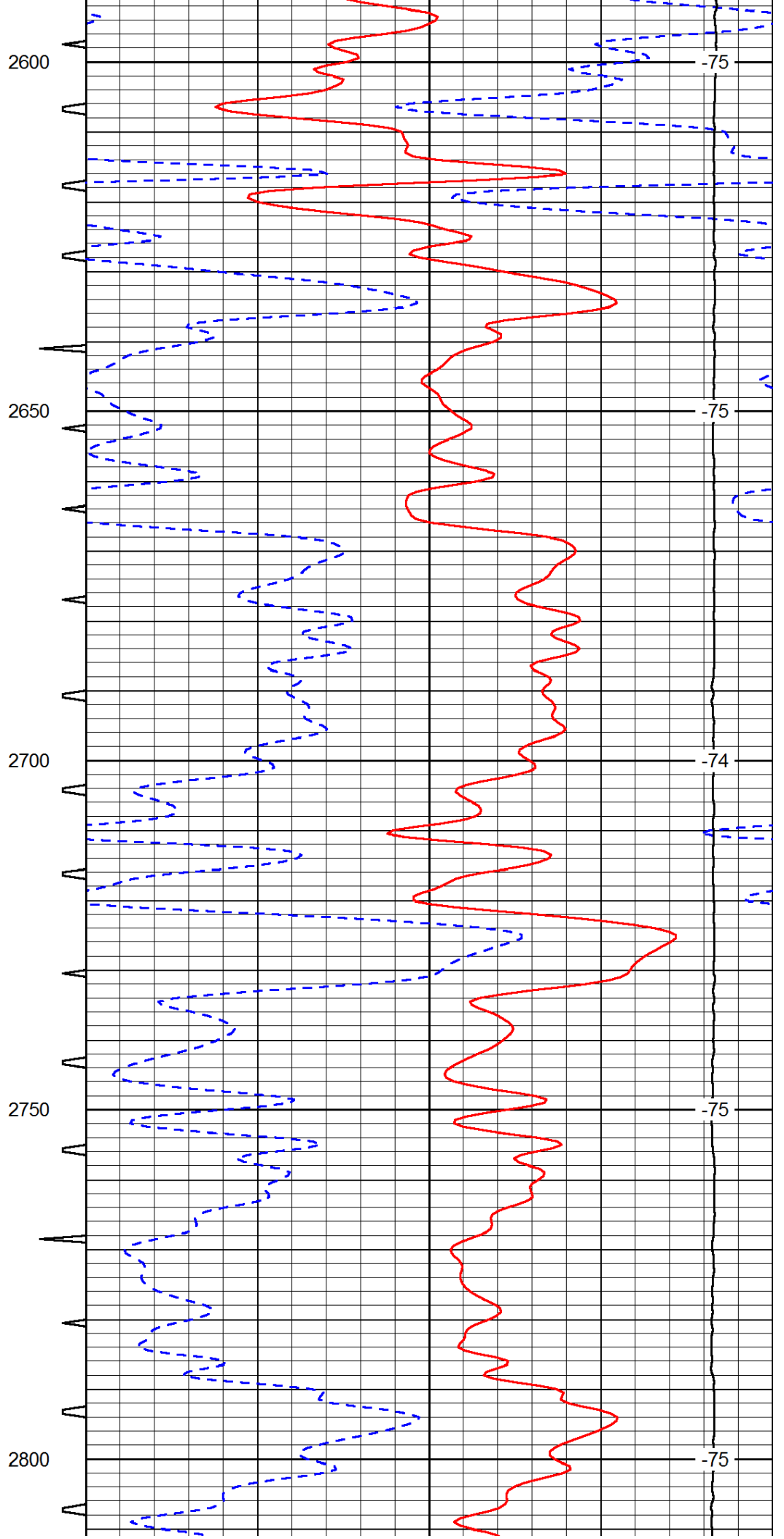
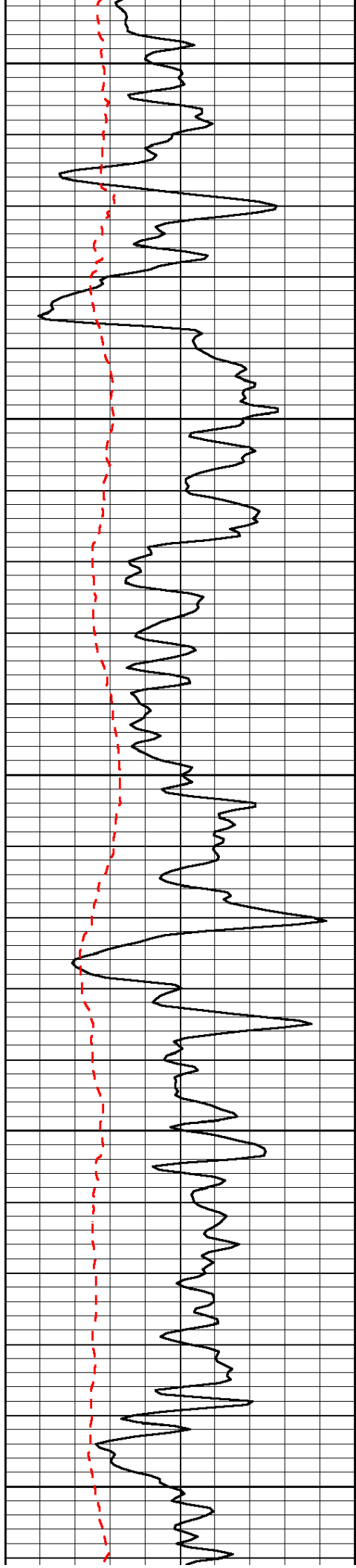


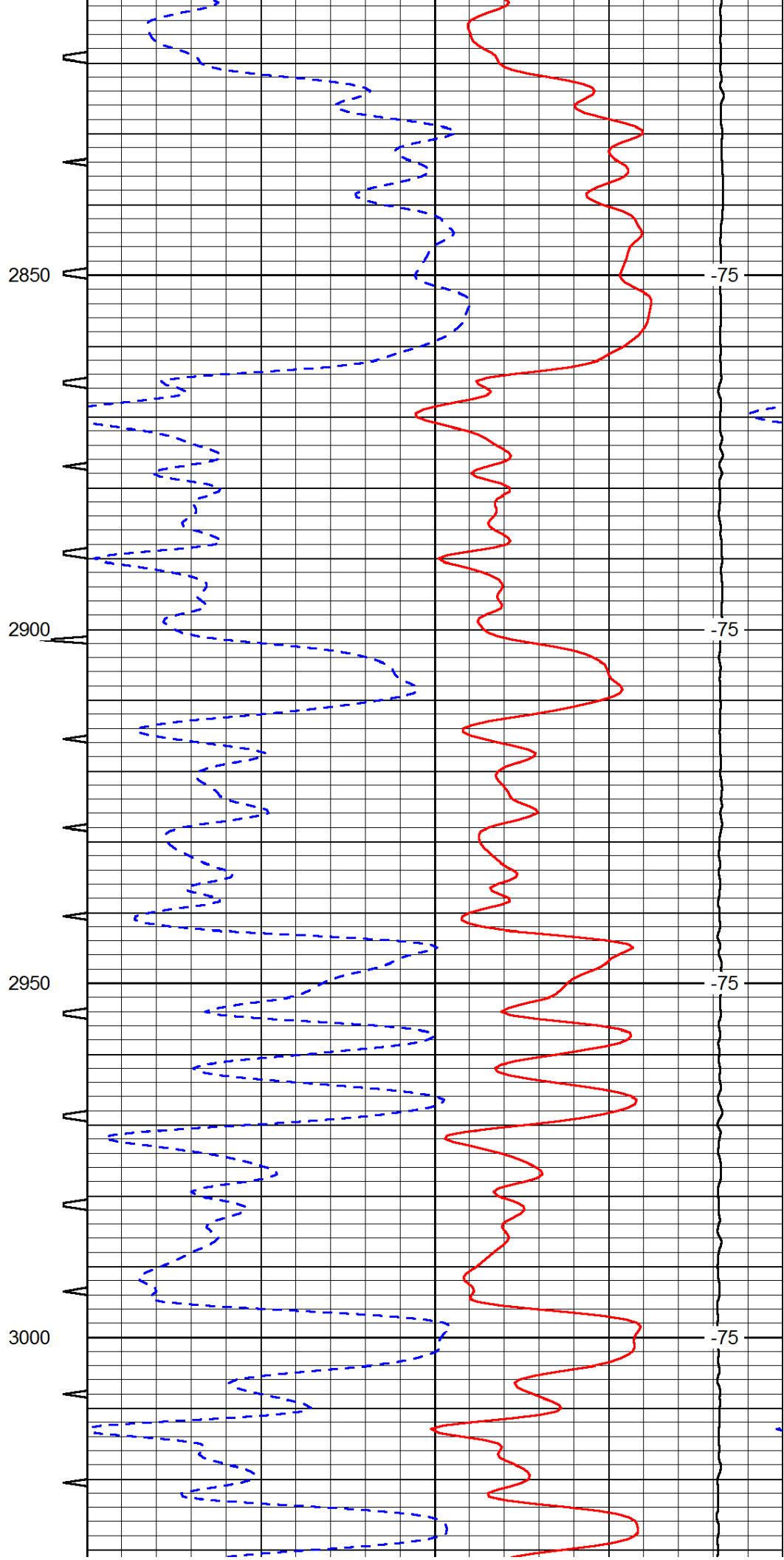
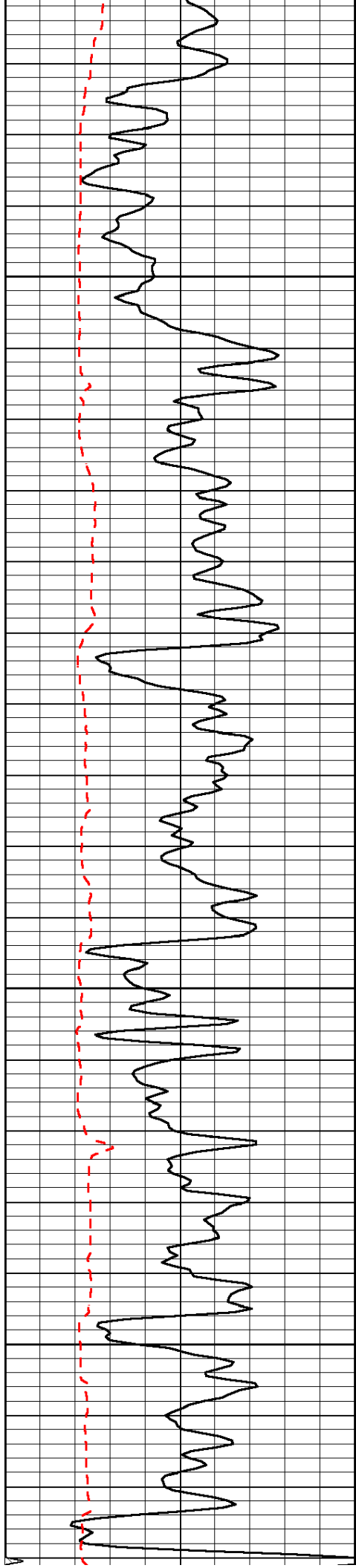


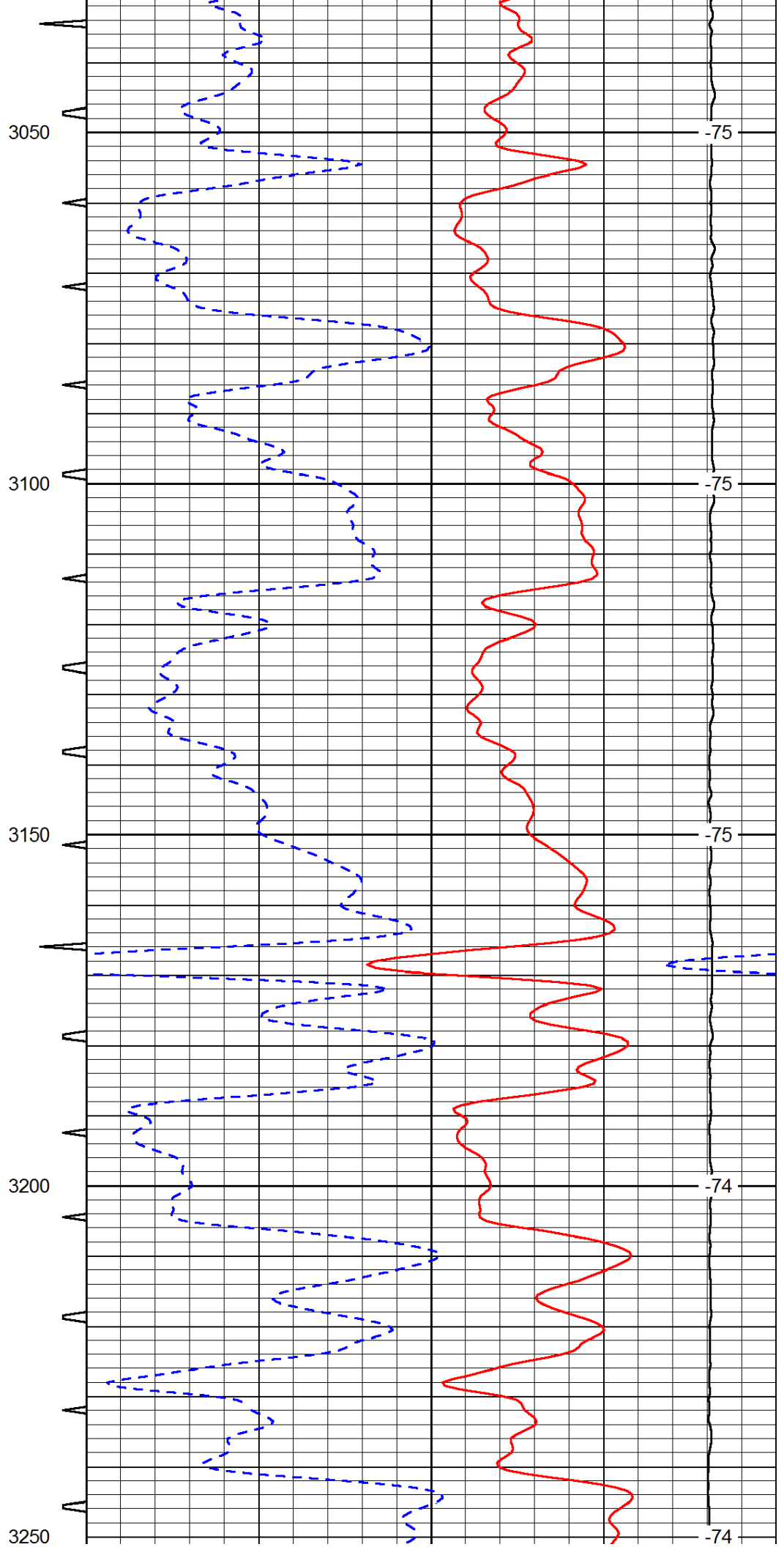
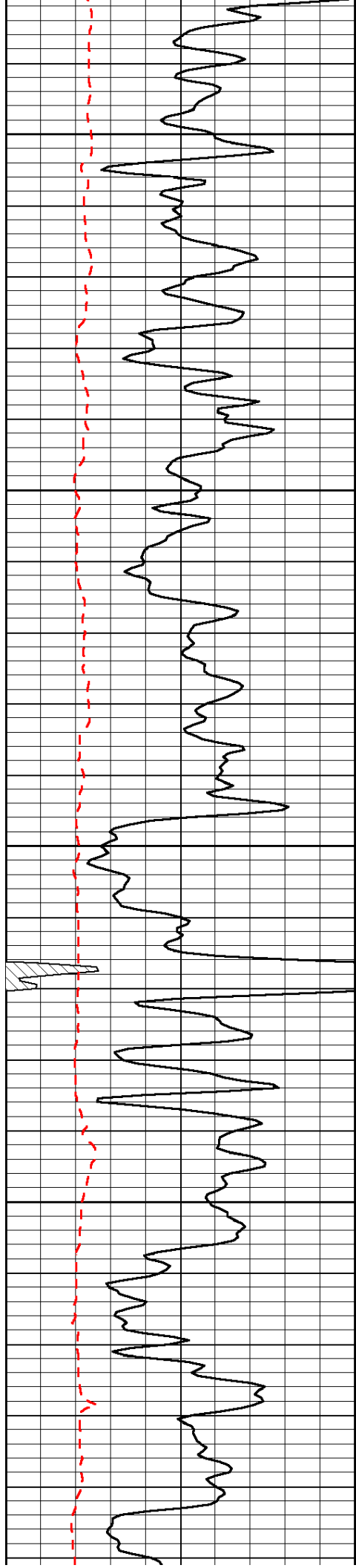


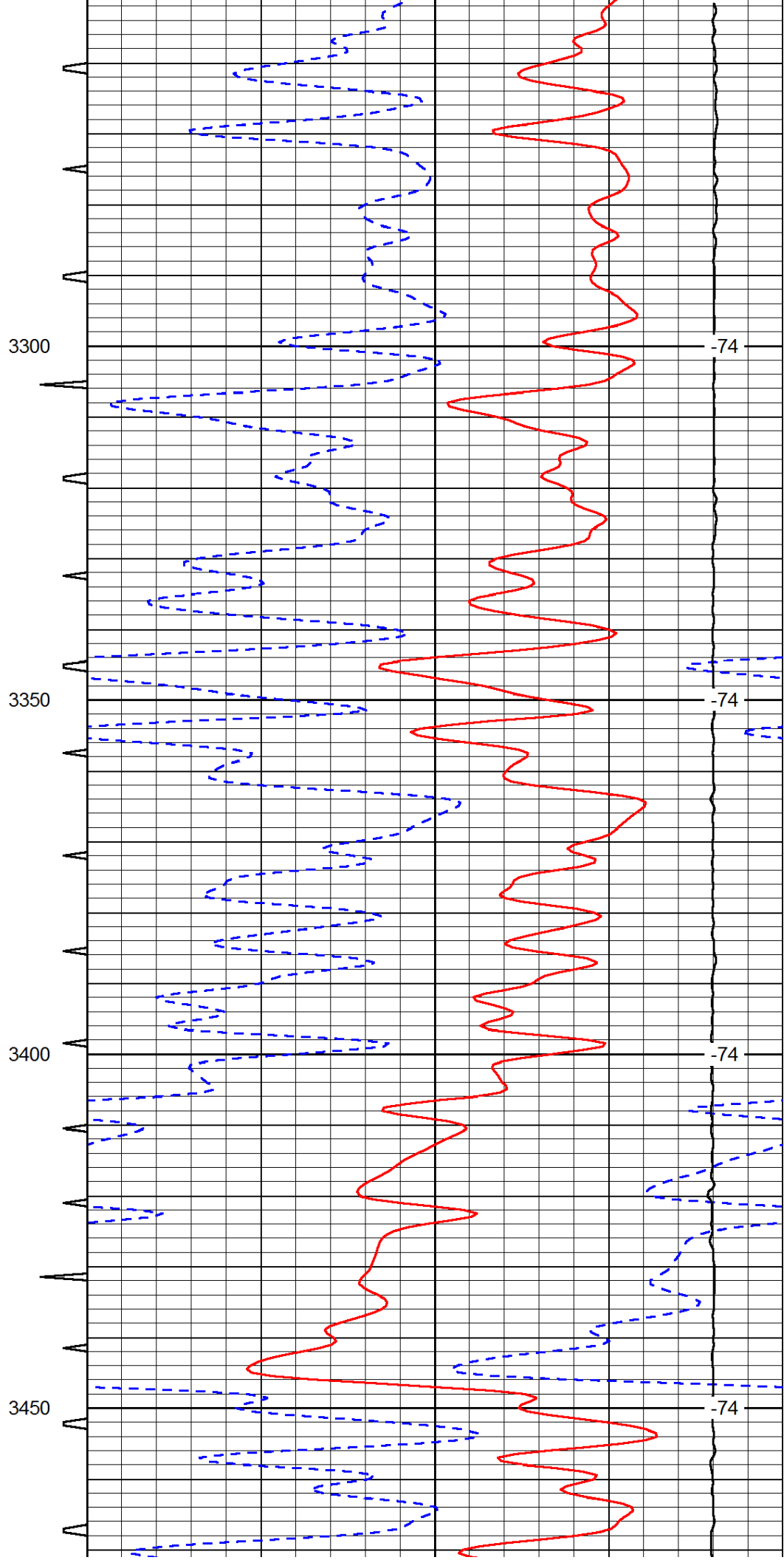
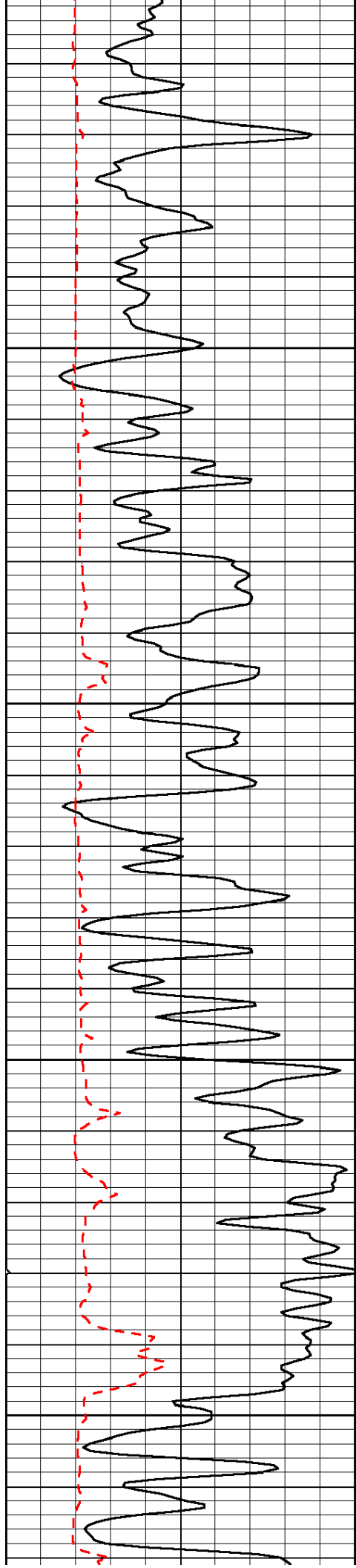


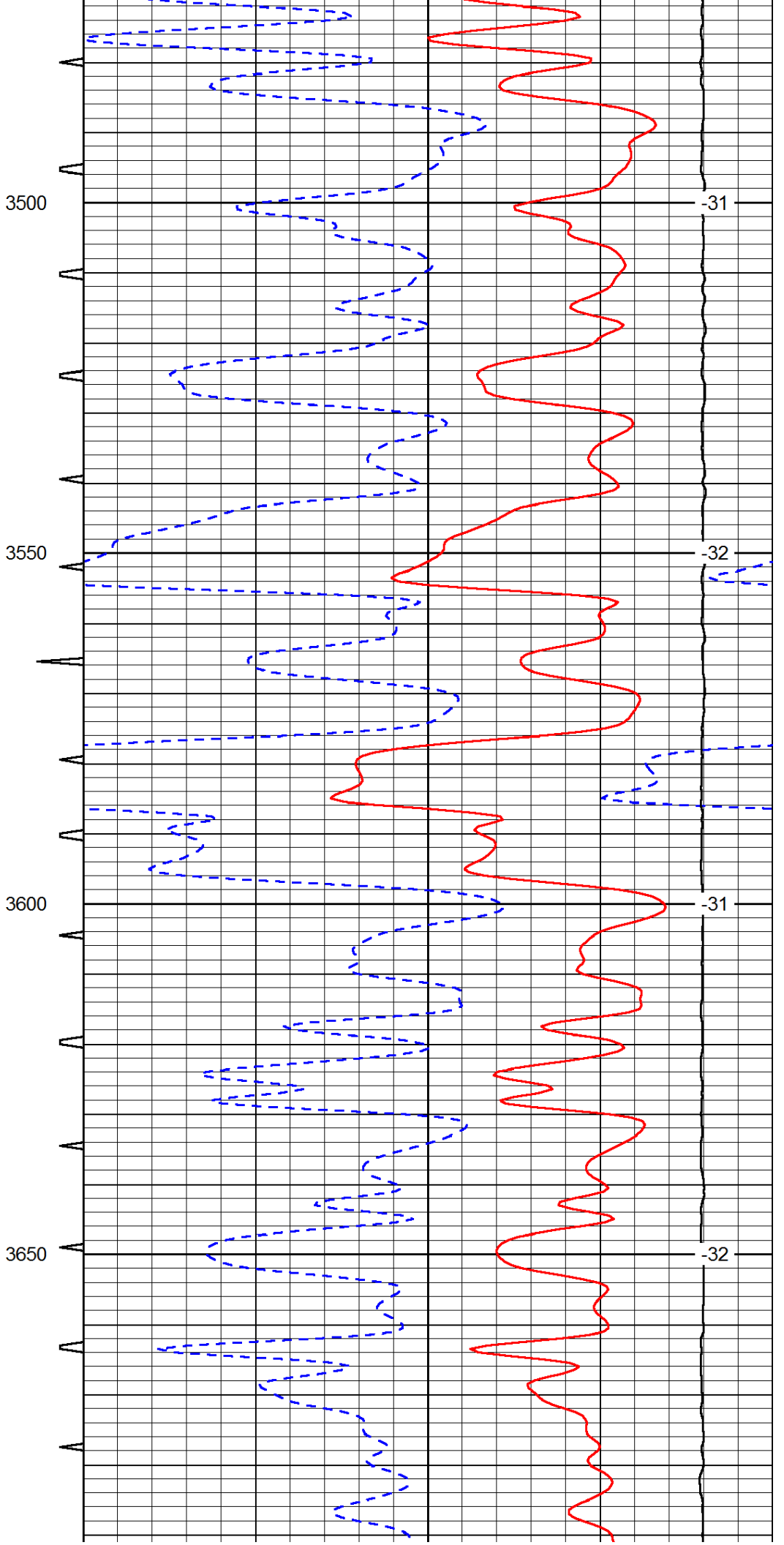
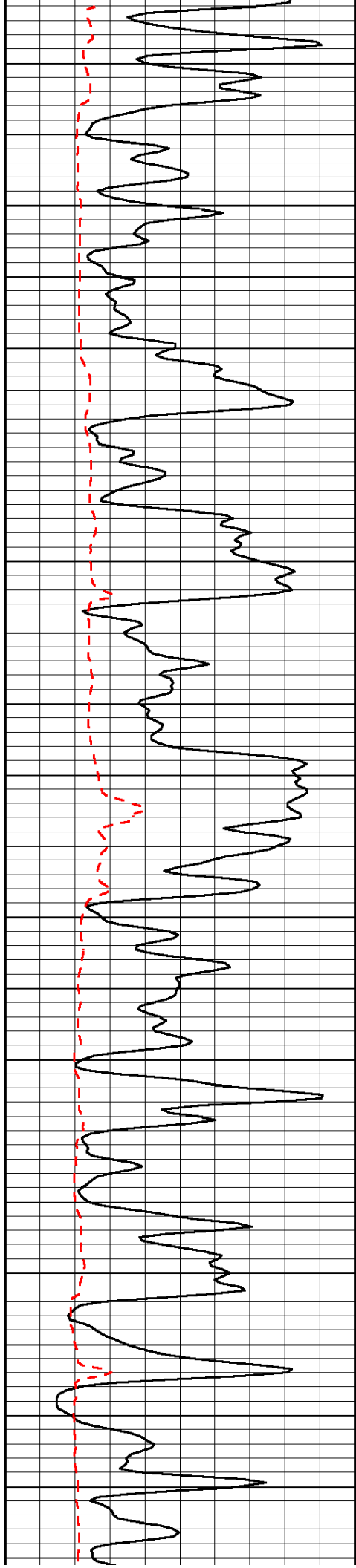


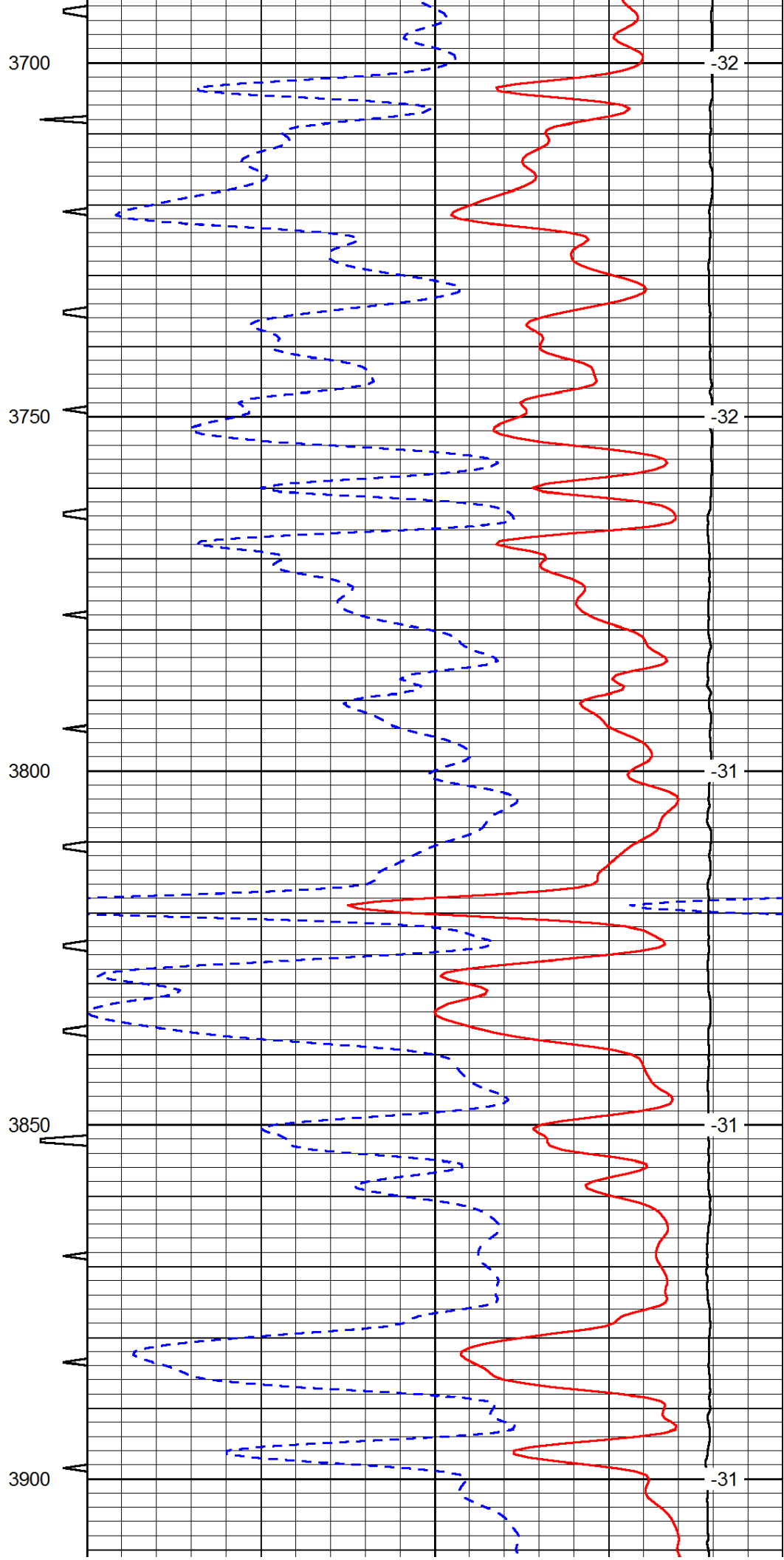
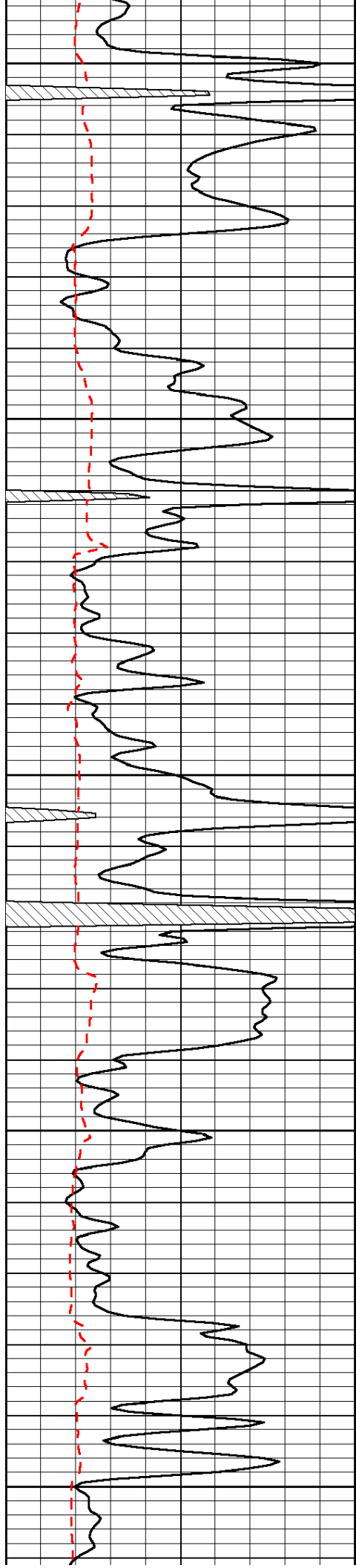


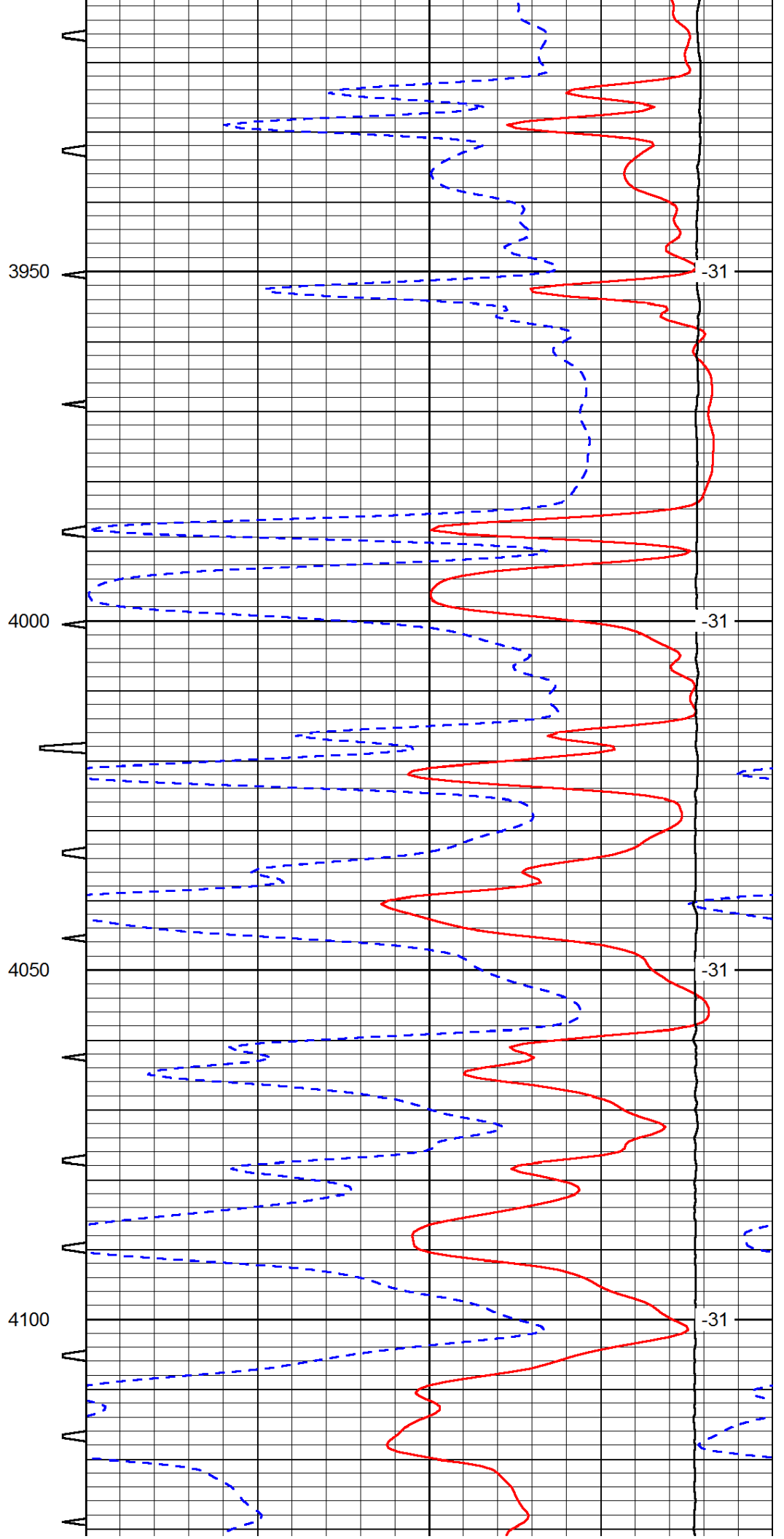
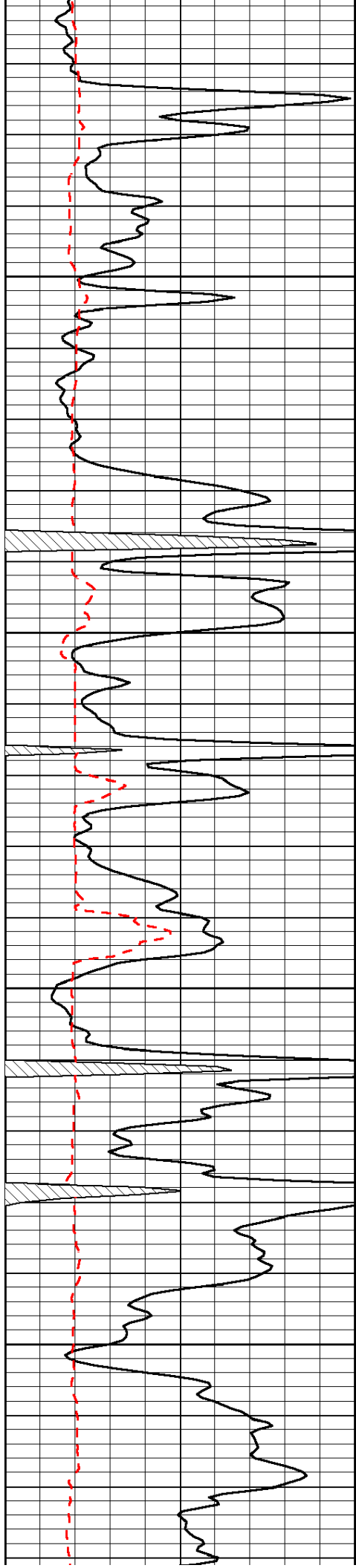


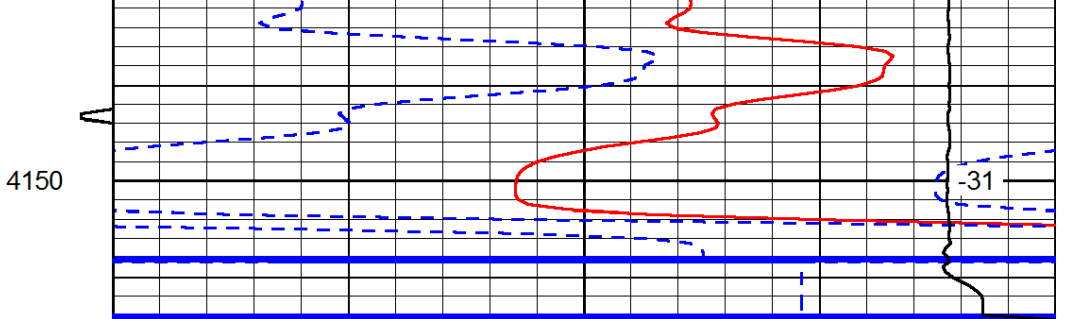
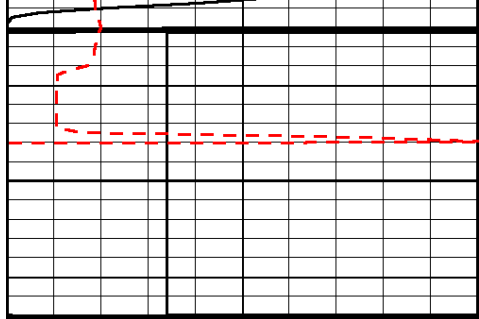












0	Gamma Ray	150	Sonic Int	140	Delta Time (usec/ft)	40
150	Gamma Ray	300	5	0	SPOR	-10
6	Caliper (GAPI)	16		15000	LTEN (lb)	0
						LSPD