



**COMPLETION
& PRODUCTION
SERVICES CO.**

**MICRO
LOG**

Company CHARTER ENERGY, INC.
Well OTTLEY #3
Field WILDCAT
County GOVE State KANSAS

Company CHARTER ENERGY, INC.
Well OTTLEY #3
Field WILDCAT
County GOVE
State KANSAS

Location: API #: 15-063-22087
NE - NW - SE - SE
1223' FSL & 846' FEL
SEC 33 TWP 13S RGE 29W
Permanent Datum GROUND LEVEL Elevation 2713
Log Measured From KELLY BUSHING 7' A.G.L.
Drilling Measured From KELLY BUSHING
Other Services
CNL/CDL
DIL
Elevation
K.B. 2720
D.F. 2718
G.L. 2713

Date	2/26/13		
Run Number	ONE		
Depth Driller	4500		
Depth Logger	4502		
Bottom Logged Interval	4500		
Top Log Interval	3600		
Casing Driller	233		
Casing Logger	232		
Bit Size	7.875		
Type Fluid in Hole	CHEMICAL MUD		
Density / Viscosity	9.5 / 49		
pH / Fluid Loss	9.0 / 6.8		
Source of Sample	FLOWLINE	CHLORIDES 2.800	
Rim @ Meas. Temp	1.10 @ 73F		
Rmf @ Meas. Temp	0.82 @ 73F		
Rmc @ Meas. Temp	1.32 @ 73F		
Source of Rmf / Rmc	MEASURED		
Rim @ BHT	0.67 @ 120F		
Time Circulation Stopped	3 HOURS		
Time Logger on Bottom			
Maximum Recorded Temperature	120F		
Equipment Number	860		
Location	HAYS, KS.		
Recorded By	IAN MABB		
Witnessed By	KURT TALBOTT		

<<< Fold Here >>>

All interpretations are opinions based on inferences from electrical or other measurements and we cannot and do not guarantee the accuracy or correctness of any interpretation, and we shall not, except in the case of gross or willful negligence on our part, be liable or responsible for any loss, costs, damages, or expenses incurred or sustained by anyone resulting from any interpretation made by any of our officers, agents or employees. These interpretations are also subject to our general terms and conditions set out in our current Price Schedule.

Comments

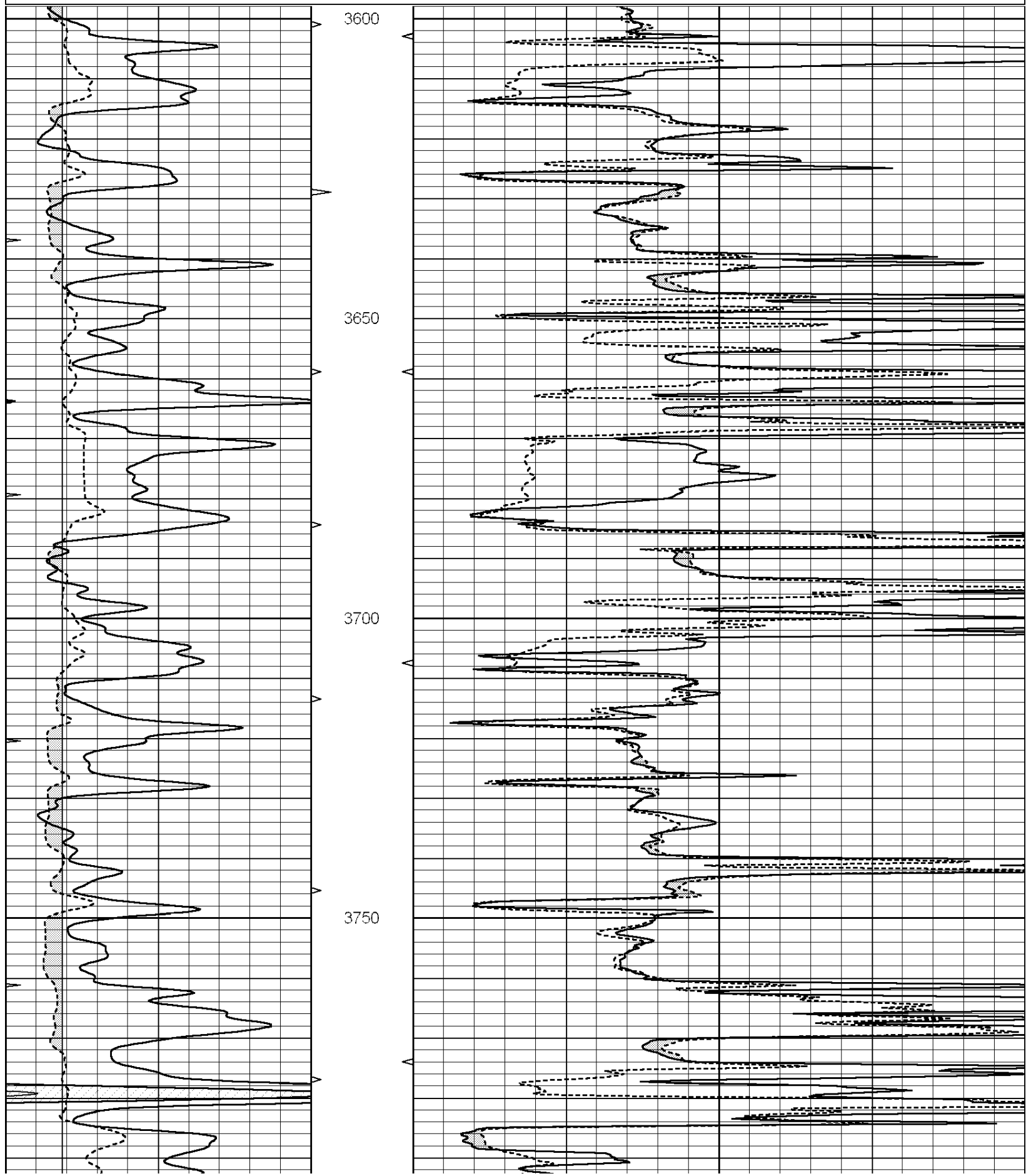
NABORS COMPLETION & PRODUCTION CO.
785-628-6395

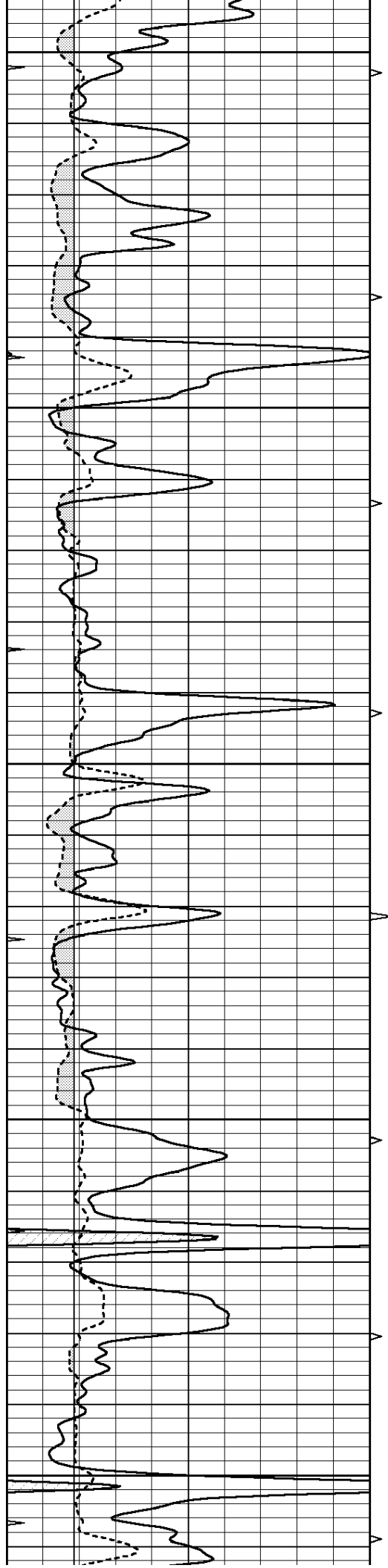
THANK YOU FOR YOUR BUSINESS

GOVE, KS. - 4 MILES SOUTH TO RD O - 4 MILES WEST TO RD 34 - 1 MILES SOUTH - 3 MILES EAST INTO

0	GAMMA RAY (GAPI)	150
6	MELCAL (in)	16
0	MINMK	20

0	MEL1.5 (Ohm-m)	40
0	MEL2.0 (Ohm-m)	40





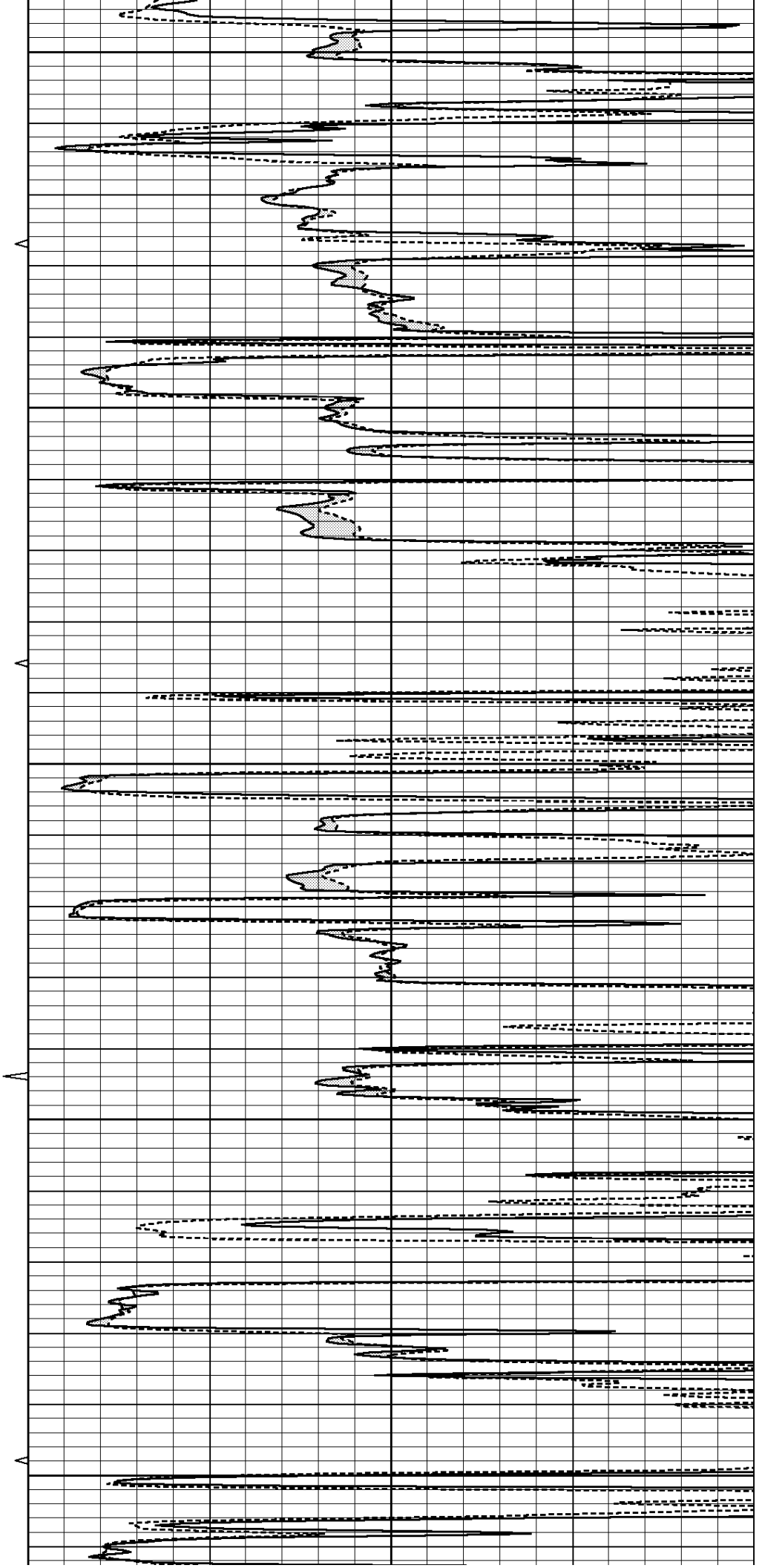
3800

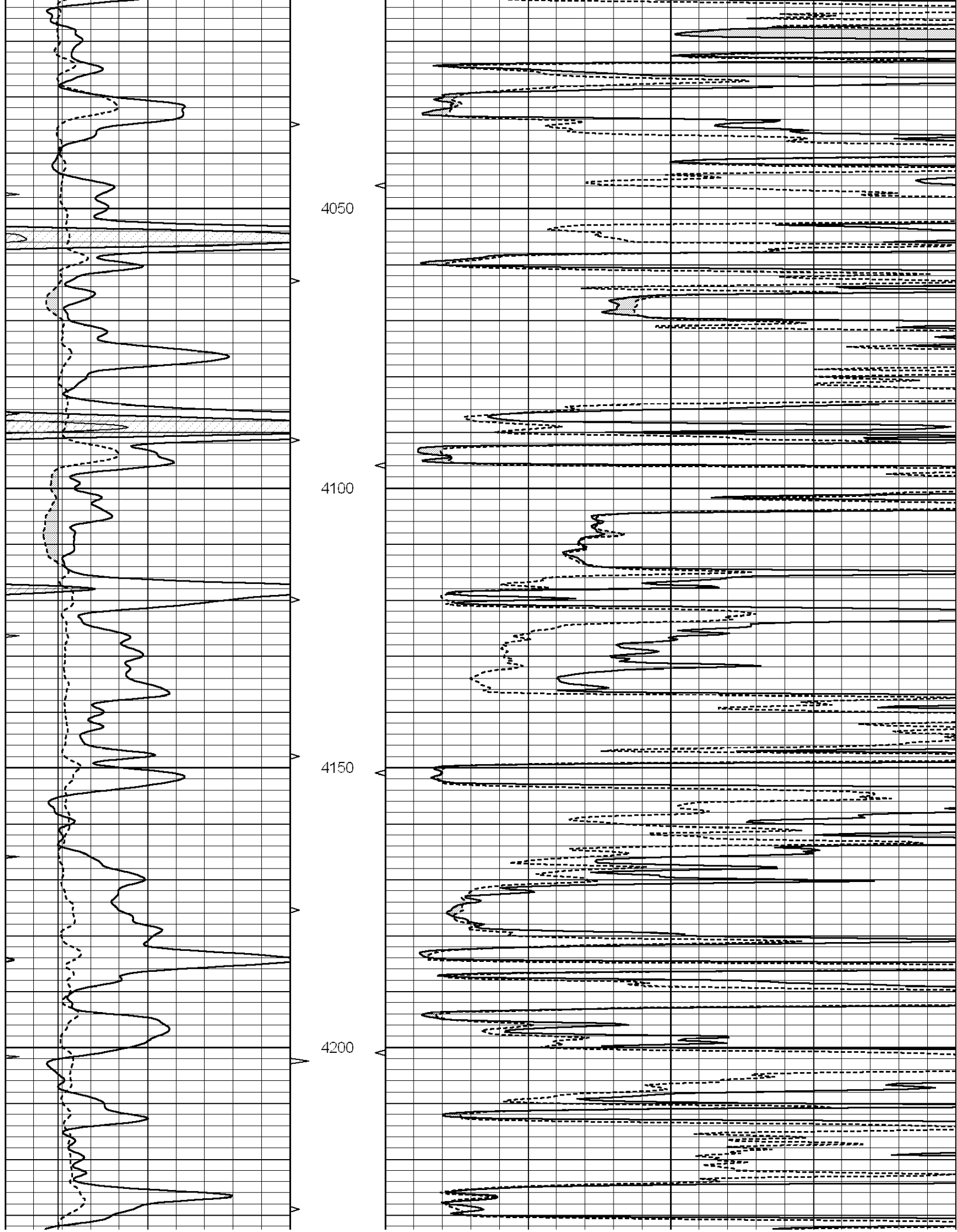
3850

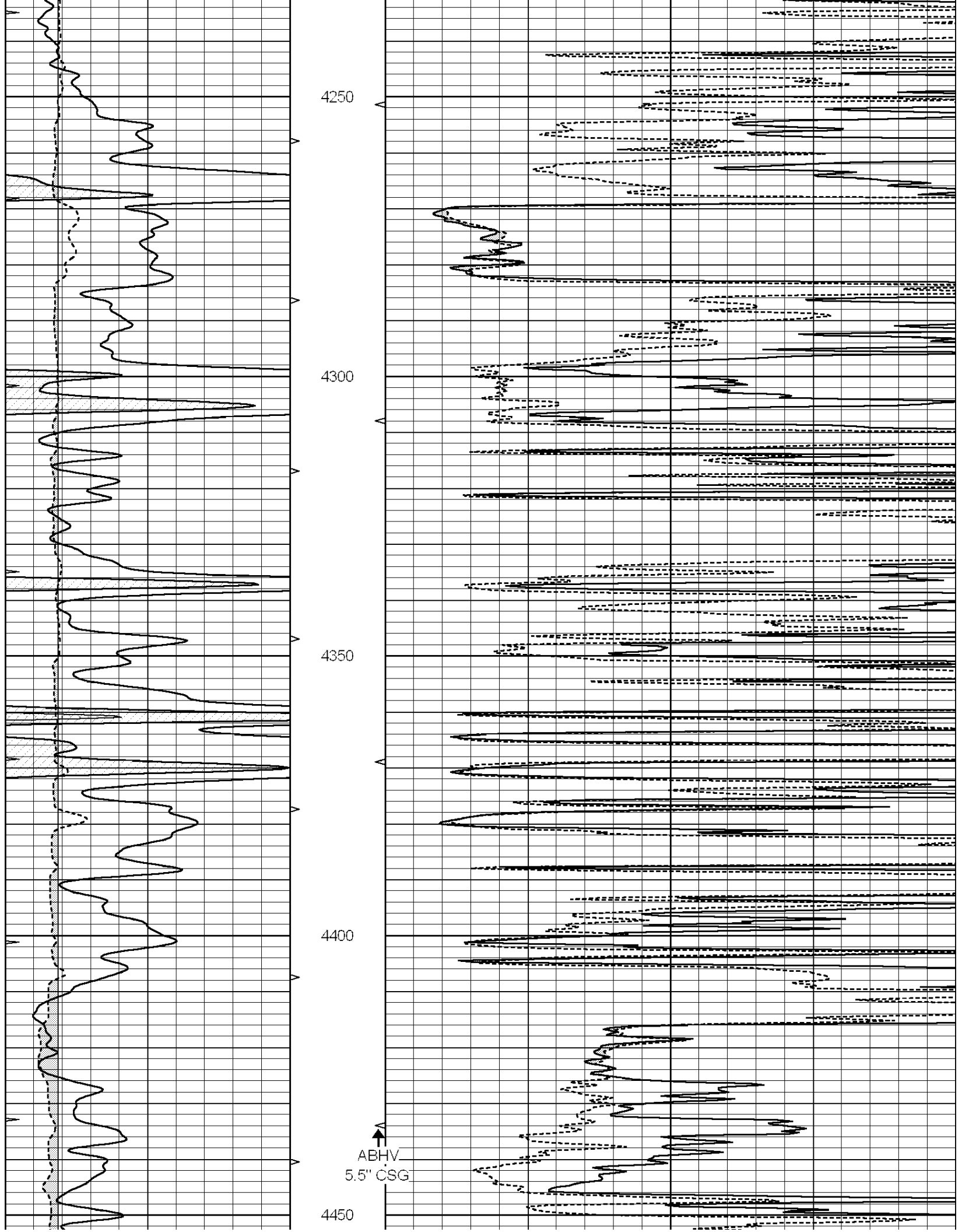
3900

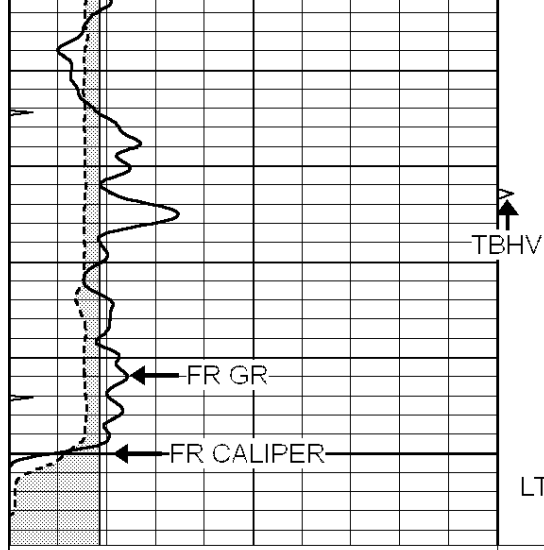
3950

4000



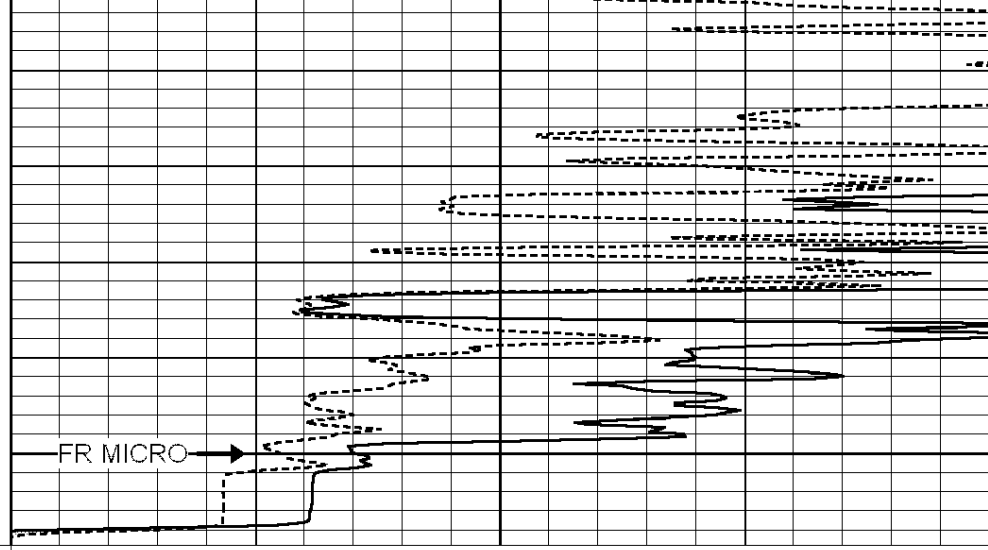






4500
LTD 4502

0	GAMMA RAY (GAPI)	150
6	MELCAL (in)	16
0	MINMK	20



0	MEL1.5 (Ohm-m)	40
0	MEL2.0 (Ohm-m)	40

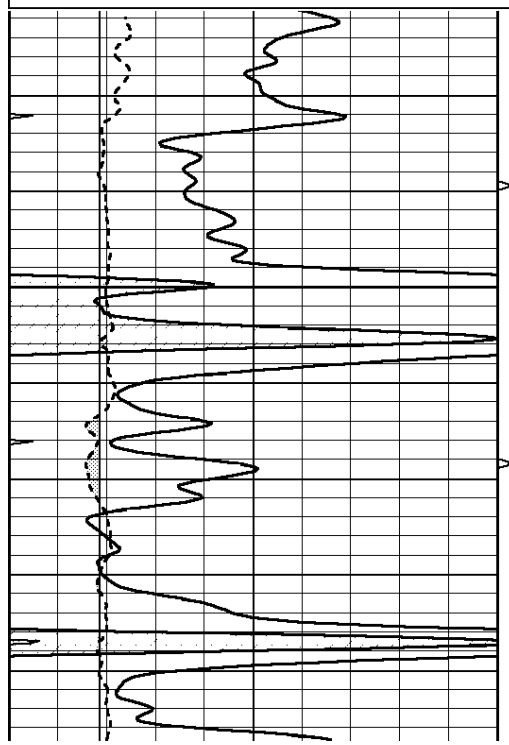
NABORS
COMPLETION
& PRODUCTION
SERVICES CO.

REPEAT SECTION

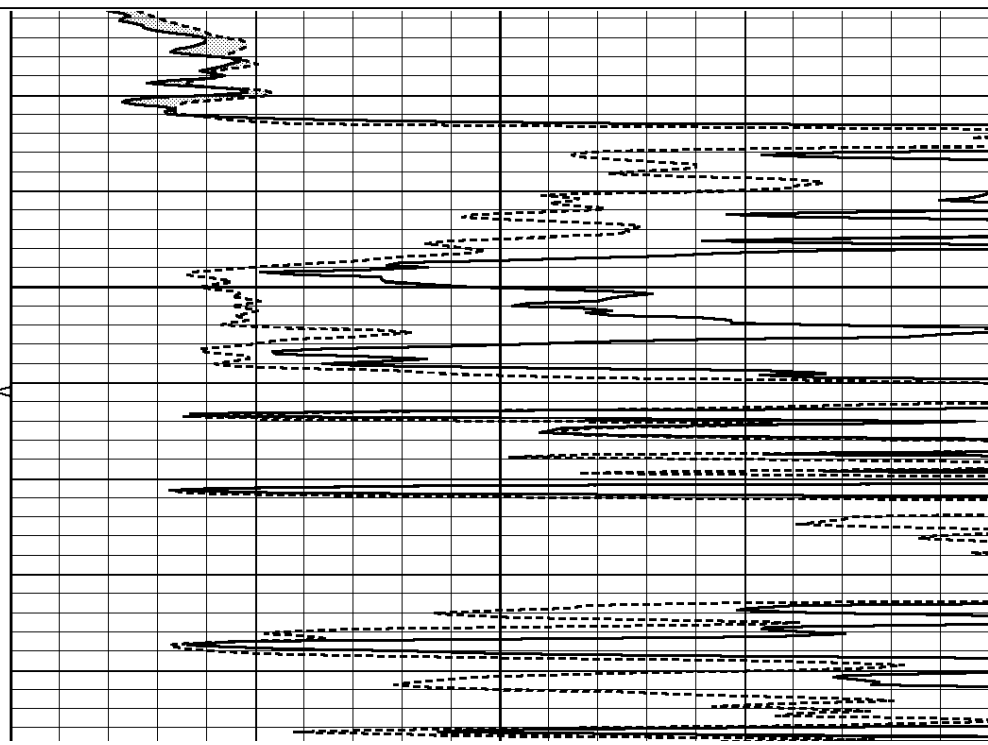
Database File: 010826ddn.db
 Dataset Pathname: pass5.7
 Presentation Format: micro
 Dataset Creation: Tue Feb 26 06:42:47 2013 by Calc Open-Cased 090629
 Charted by: Depth in Feet scaled 1:240

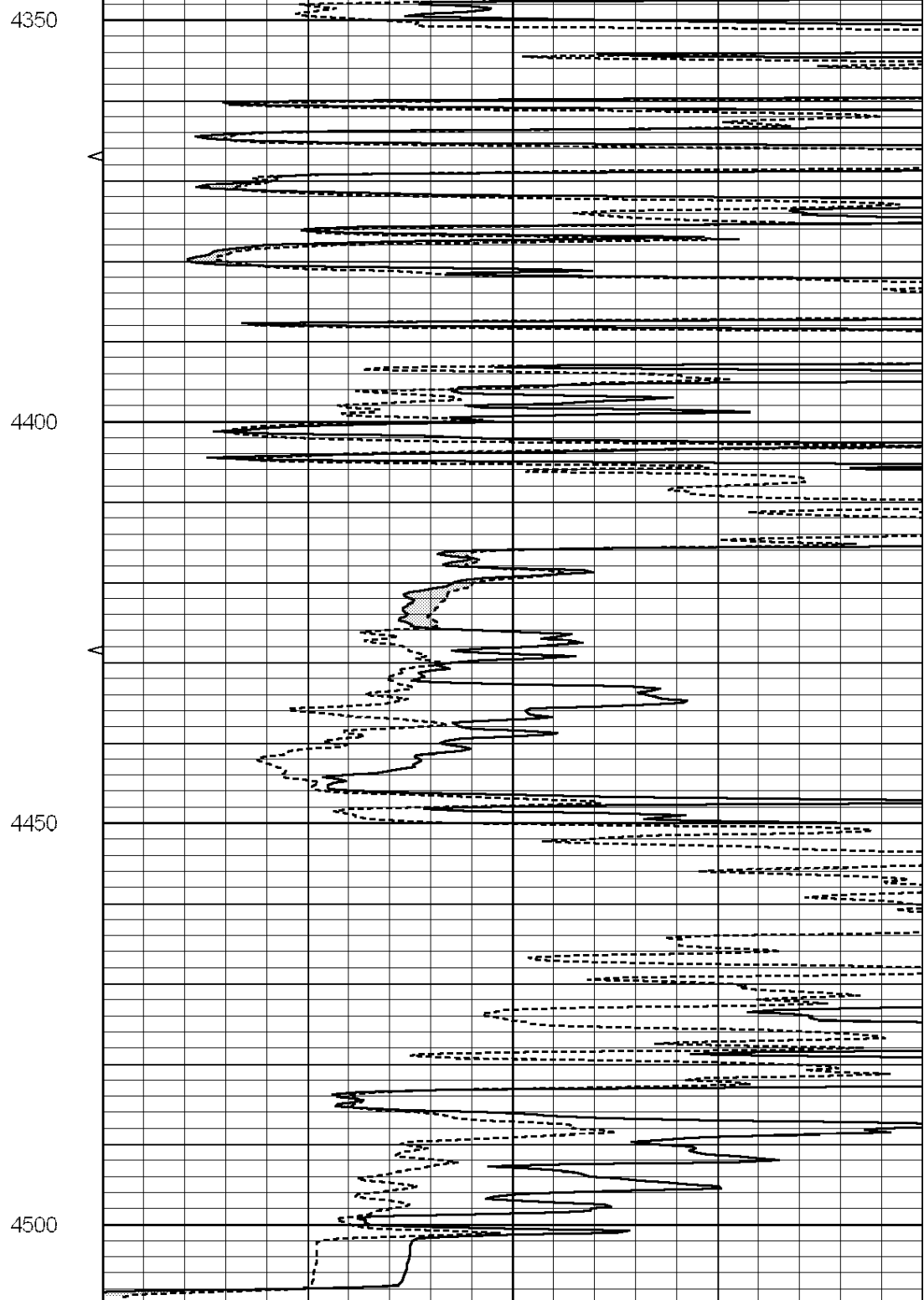
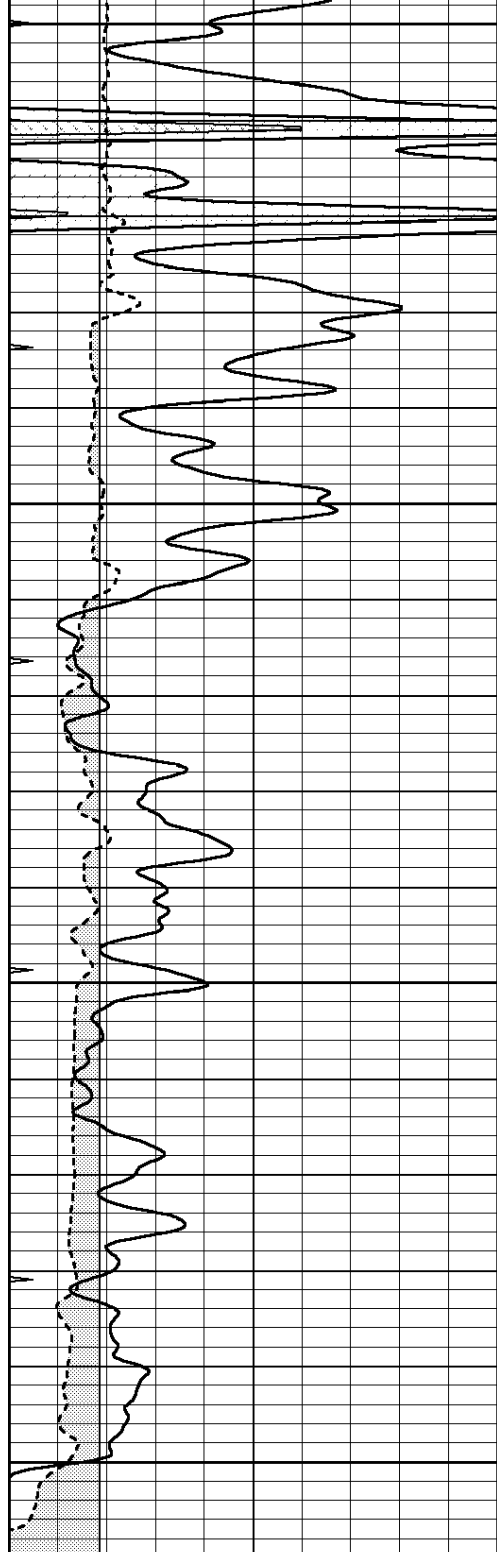
0	GAMMA RAY (GAPI)	150
6	MELCAL (in)	16
0	MINMK	20

0	MEL1.5 (Ohm-m)	40
0	MEL2.0 (Ohm-m)	40



4300





0	GAMMA RAY (GAPI)	150
6	MELCAL (in)	16
0	MINMK	20

0	MEL1.5 (Ohm-m)	40
0	MEL2.0 (Ohm-m)	40

Calibration Report

Database File: 010826ddn.db
 Dataset Pathname: pass6..3
 Dataset Creation: Tue Feb 26 07:32:27 2013 by Calc Open-Cased 090629

MICRO Calibration Report

Serial Number: MICRO4
 Tool Model: PROBE
 Performed: Sat Feb 02 05:18:31 2013

Performed:

Fri Feb 02 09:18:51 2013

Caliper Calibration:

Gain=2.061

Offset=-3.740

References
Readings

Low Cal
8.800
6.047

High Cal
11.800
7.517

1.5" Calibration:

Gain=50.000

Offset=-3.000

References
Readings

Low Cal
0.000
0.009

High Cal
20.000
1.541

2" Calibration:

Gain=40.000

Offset=0.000

References
Readings

Low Cal
0.000
0.004

High Cal
20.000
1.198

Gamma Ray Calibration Report

Serial Number:
Tool Model:
Performed:

GR5
OPEN
Fri Feb 08 10:03:25 2013

Calibrator Value:

1.0

GAPI

Background Reading:
Calibrator Reading:

0.0
1.0

cps
cps

Sensitivity:

1.5000

GAPI/cps