



MICRO
RESTIVITY
LOG

Company Jason Oil Company, LLC.
Well Becker #2
Field Unnamed
County Russell
State KS

Location: 2310' SSL & 330' FEI
API #: 15 167 23861
Other Services: MIL, DIL

Company Jason Oil Company, LLC.
Well Becker #2
Field Unnamed
County Russell
State KS
Location: 2310' SSL & 330' FEI
API #: 15 167 23861
Other Services: MIL, DIL
SEC 25 TWP 15S RGE 15W
Permanent Datum
Log Measured From KB 7' AGL
Elevation 1901'
Elevation K.B. 1908
D.F. 1907
G.L. 1901

Date 2-24-13
Run Number Two
Depth Driller 3449
Bottom Logged Interval 3447'
Top Log Interval 300'
Casing Driller 386'
Casing Logger 386'
Bit Size 7 7/8"
Type Fluid In Hole Chemical Mud
Density / Viscosity 9.2/48
pH / Fluid Loss 9.5/9.6
Source of Sample rem @ Schlegl
rem @ Meas. Temp 33@Schlegl
rem @ Meas. Temp 34@Schlegl
Source of Form. RmC Calculated
rem @ BHT 22@112@egf
Time Cutoff on Bottom 12:30 am.
Maximum recorded temperature 4:30 am.
170degf
Equipment Number 170degf
Recorded By Hrg KS
Gus Fritzsche
Reviewed By Mr. Jeff Lanier

<<< Fold Here >>>

All interpretations are opinions based on inferences from electrical or other measurements and we cannot and do not guarantee the accuracy or correctness of any interpretation, and we shall not, except in the case of gross or willful negligence on our part, be liable or responsible for any loss, costs, damages, or expenses incurred or sustained by anyone resulting from any interpretation made by any of our officers, agents or employees. These interpretations are also subject to our general terms and conditions set out in our current Price Schedule.

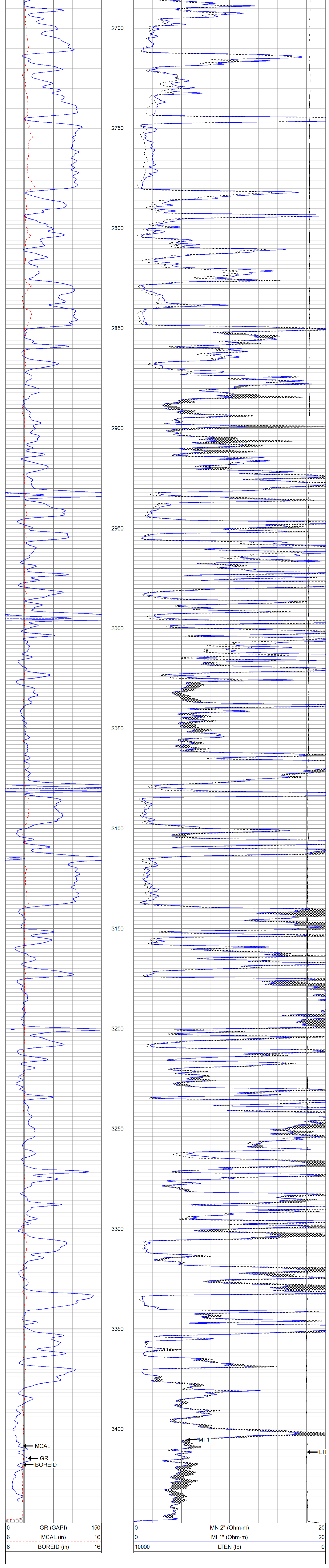
Comments

Thank you for using Gemini Wireline
785-625-1182

GEMINI WIRELINE Main Pass

Database File jobecker#2oh.db
Dataset Pathname pass4
Presentation Format kml
Dataset Creation Sun Feb 24 04:53:56 2013
Charted by Depth in Feet scaled 1:240

0	GR (GAPI)	150	0	MN 2" (Ohm-m)	20
6	MCAL (in)	16	0	MI 1" (Ohm-m)	20
6	BOREID (in)	16	10000	LTEN (lb)	0

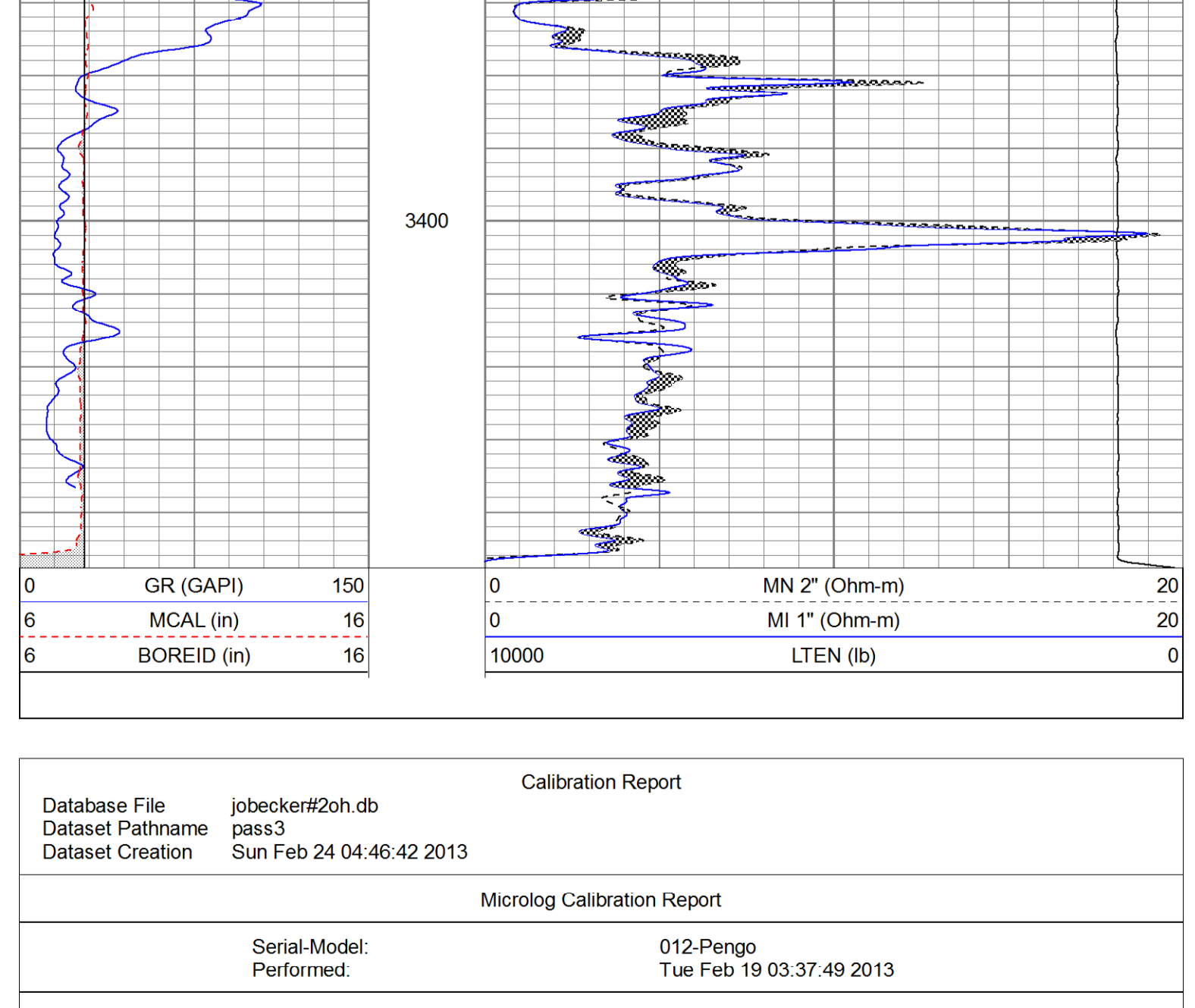


0	GR (GAPI)	150	0	MN 2" (Ohm-m)	20
6	MCAL (in)	16	0	MI 1" (Ohm-m)	20
6	BOREID (in)	16	10000	LTEN (lb)	0

GEMINI WIRELINE Repeat Pass

Database File jobecker#2oh.db
Dataset Pathname pass3
Presentation Format kml
Dataset Creation Sun Feb 24 04:46:42 2013
Charted by Depth in Feet scaled 1:240

0	GR (GAPI)	150	0	MN 2" (Ohm-m)	20
6	MCAL (in)	16	0	MI 1" (Ohm-m)	20
6	BOREID (in)	16	10000	LTEN (lb)	0



0	GR (GAPI)	150	0	MN 2" (Ohm-m)	20
6	MCAL (in)	16	0	MI 1" (Ohm-m)	20
6	BOREID (in)	16	10000	LTEN (lb)	0

Database File jobecker#2oh.db
Dataset Pathname pass3
Dataset Creation Sun Feb 24 04:46:42 2013

Calibration Report

Serial-Model: Performed: 012-Pengo
Tue Feb 19 03:37:49 2013

Microlog Calibration Report

	Readings			References		Results	
	Zero	Cal		Zero	Cal	m	b
Normal	0.0254	0.4358	V	0.0000	12.0000	Ohm-m	29.2405
Inverse	0.0063	0.5619	V	0.0000	8.0000	Ohm-m	-0.7423
Caliper	3.2460	6.8378	V	8.6000	15.0000	in	1.7818

Gamma Ray Calibration Report

Serial Number: 2000
Tool Model: P2000
Performed: Sun Feb 17 16:51:47 2013
Calibrator Value: 1.0 GAPI
Background Reading: 0.0 cps
Calibrator Reading: 1.0 cps
Sensitivity: 0.2200 GAPI/cps

Sensor	Offset (ft)	Schematic	Description	Length (ft)	O.D. (in)	Weight (lb)
GR	8.38		GR-P2000 (2000)	3.67	3.25	40.00
MCAL	1.30		ML-Pengo (012)	6.97	3.50	100.00
MI	1.30					
MN	1.30					

Dataset: jobecker#2oh.db: field/well/run/pass3
Total length: 10.63 ft
Total weight: 140.00 lb
O.D.: 3.50 in