



Pioneer Energy Services

# Radiation Guard Log

15-135-25,493-00-00

Company **Abercrombie Energy, LLC**

Well **Ayers No.2-13**

Field **WCV**

County **Ness**

State

**Kansas**

Location

**575' FSL & 475' FWL**

Other Services  
MEL/BHCS

Sec: **13**

Twp: **19S**

Rge: **26W**

Elevation

Permament Datum **Ground Level**

**Kelly Bushing**

**Elevation 2611**

Log Measured From **Kelly Bushing**

**10 Ft. Above Perm. Datum**

Drilling Measured From **Kelly Bushing**

**K.B. 2621  
D.F. 2611  
G.L. 2611**

Date **10/24/2012**

Run Number **One**

Depth Driller **4655**

Depth Logger **4647**

Bottom Logged Interval **4646**

Top Log Interval **250**

Casing Driller **8.625 @ 280**

Casing Logger **283**

Bit Size **7.875**

Type Fluid in Hole **Chemical**

Salinity.ppm CL **3.100**

Density / Viscosity **9.3 | 63**

pH / Fluid Loss **9.5 | 11.4**

Source of Sample **Flowline**

Rm @ Meas. Temp **.95 @ 54**

Rmf @ Meas. Temp **.71 @ 54**

Rmc @ Meas. Temp **1.28 @ 54**

Source of Rmf / Rmc **Charts**

Rm @ BHT **.42 @ 122**

Operating Rig Time **4 1/2 Hours**

Max Rec. Temp. F **122**

Equipment Number **17**

Location **Hays**

Recorded By **C. Desaire**

Witnessed By **Kevin Kessler**

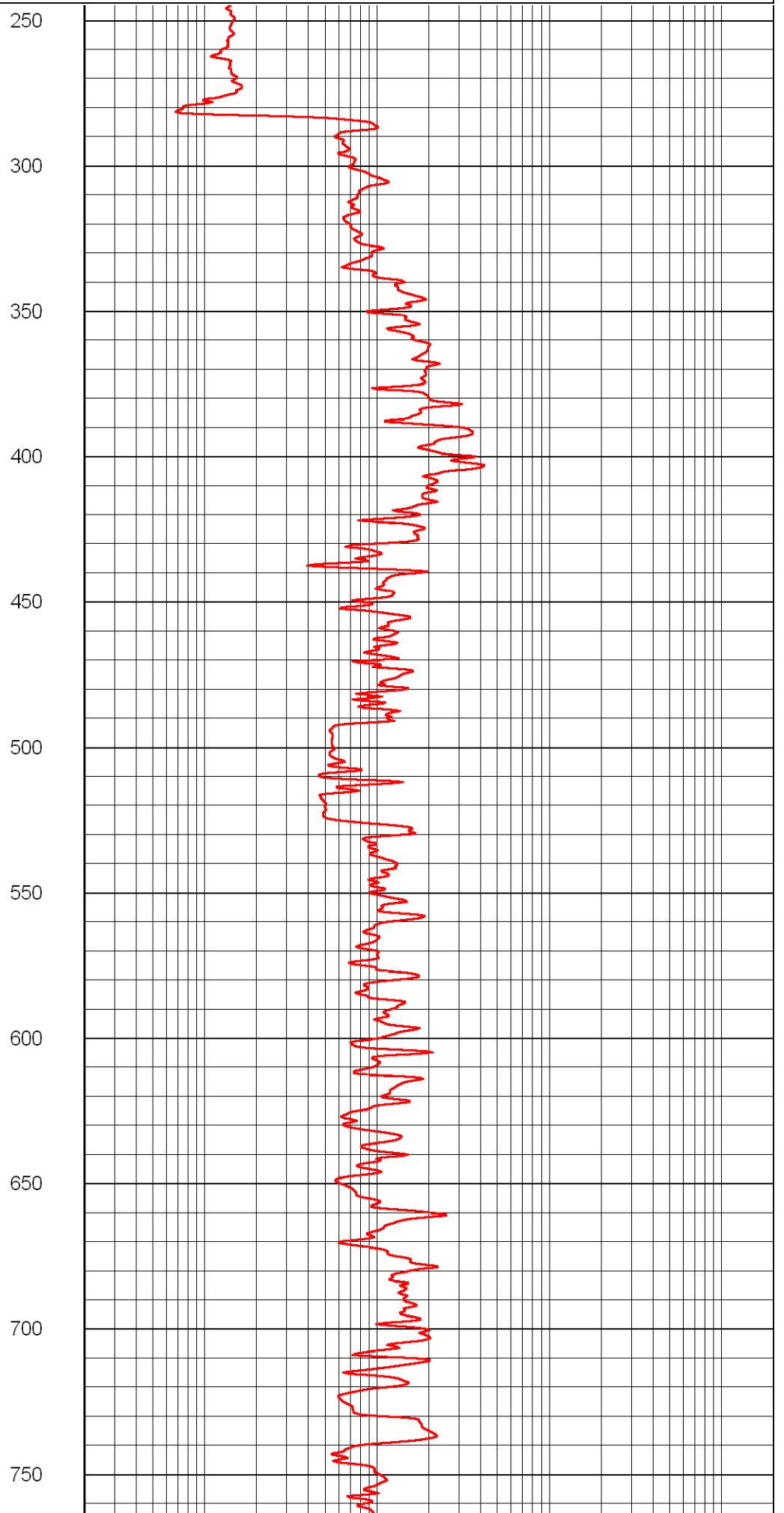
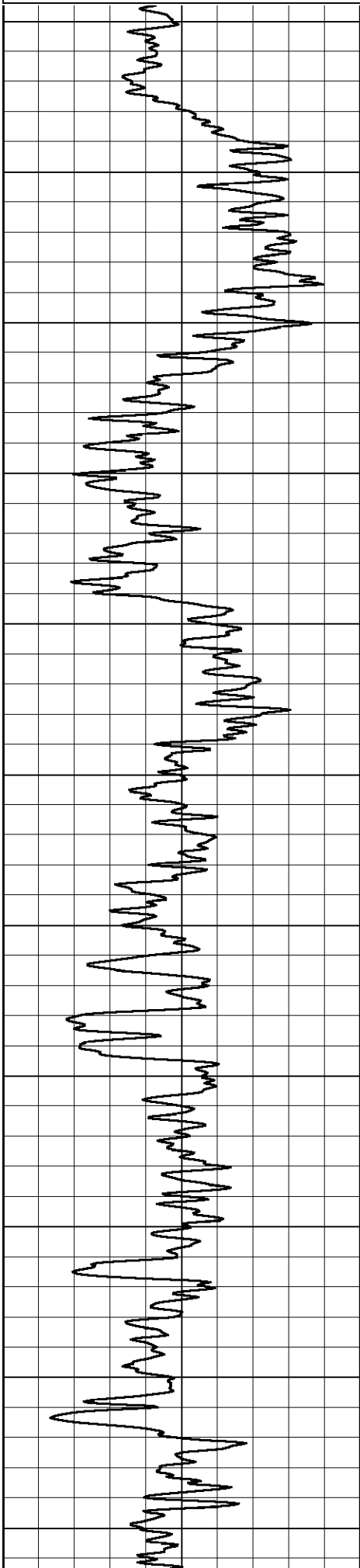
<<< Fold Here >>>

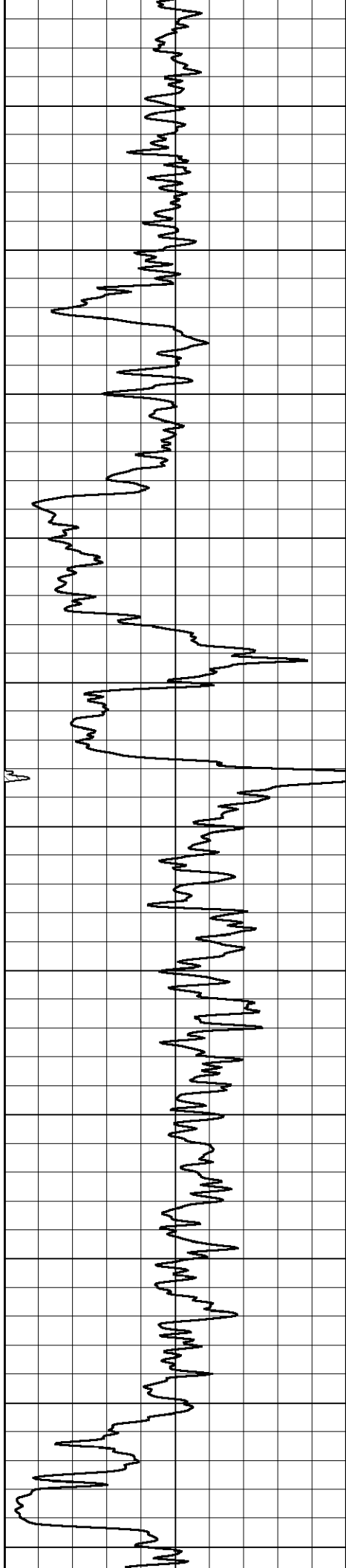
All interpretations are opinions based on inferences from electrical or other measurements and we cannot and do not guarantee the accuracy or correctness of any interpretation, and we shall not, except in the case of gross or willful negligence on our part, be liable or responsible for any loss, costs, damages, or expenses incurred or sustained by anyone resulting from any interpretation made by any of our officers, agents or employees. These interpretations are also subject to our general terms and conditions set out in our current Price Schedule.

### Comments

Thank you for using Log-Tech, Inc.  
(785) 625-3858  
Beeler KS, 5 S on C Rd to 80 Rd,  
1 1/2 E to D5 Rd, 1/2 N to 85 Rd, 1 E, (thru cttl grd),  
N to 2nd set of Tank Batt, W past Pump Jack, Left at Y, Right at 2nd Pump Jack

Database File: abercrombiehd.db  
Dataset Pathname: rag/aberag2  
Presentation Format: rag2in  
Dataset Creation: Thu Oct 25 01:36:10 2012  
Charted by: Depth in Feet scaled 1:600





800

850

900

950

1000

1050

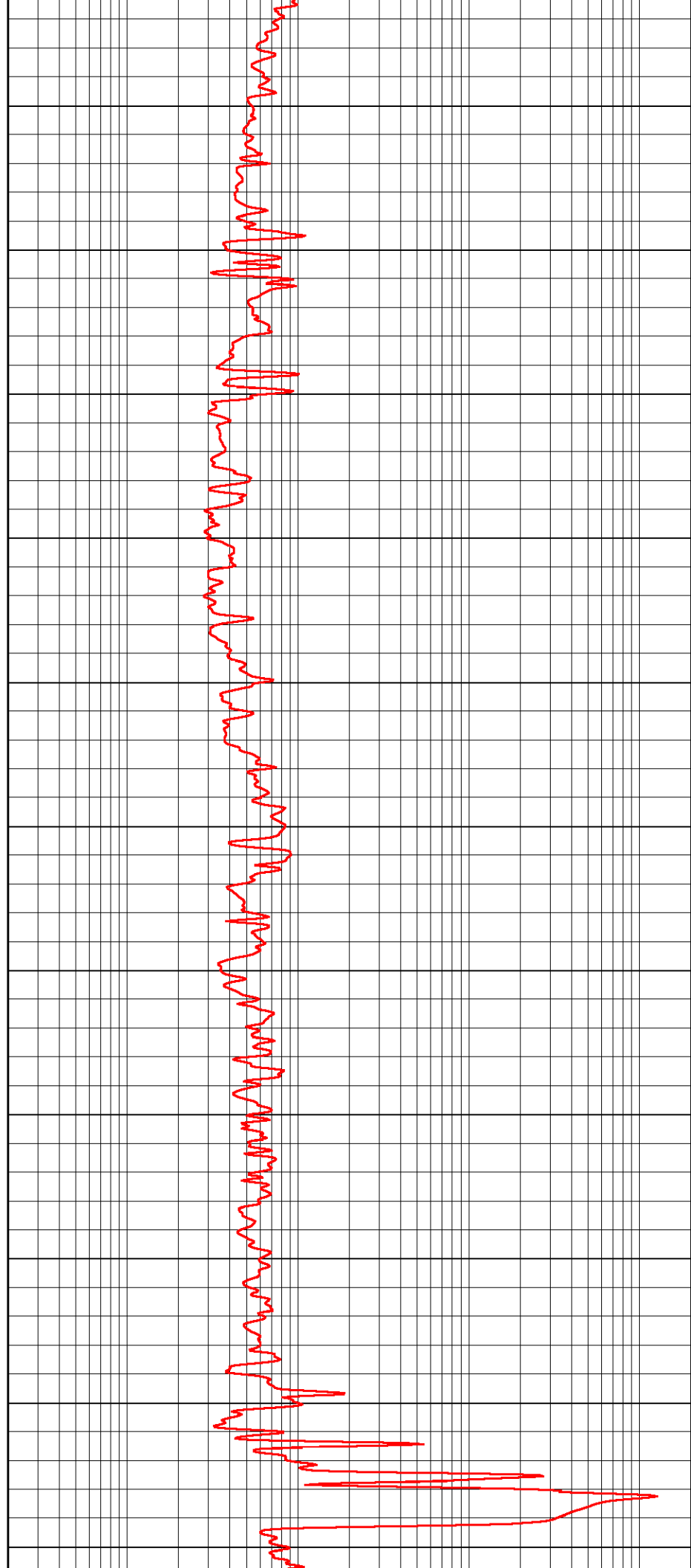
1100

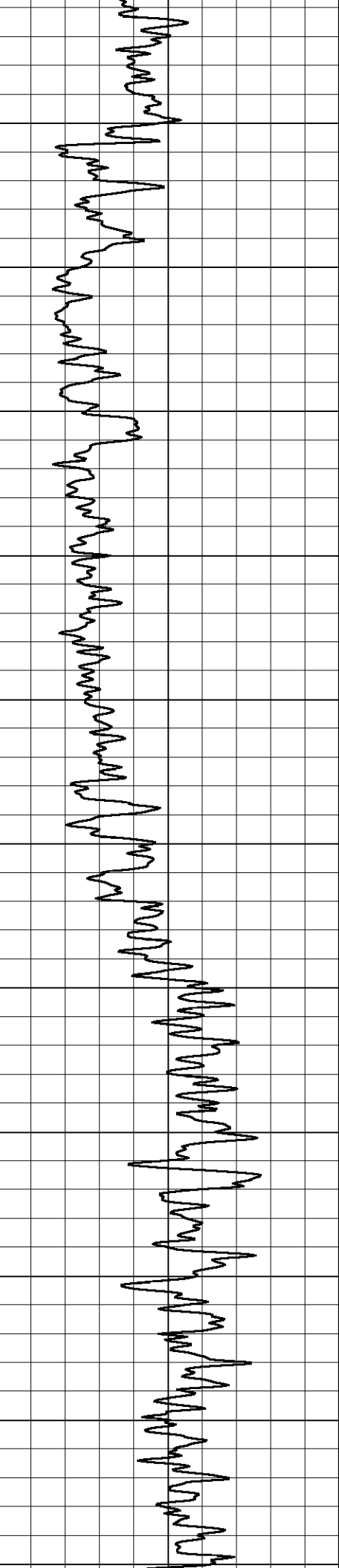
1150

1200

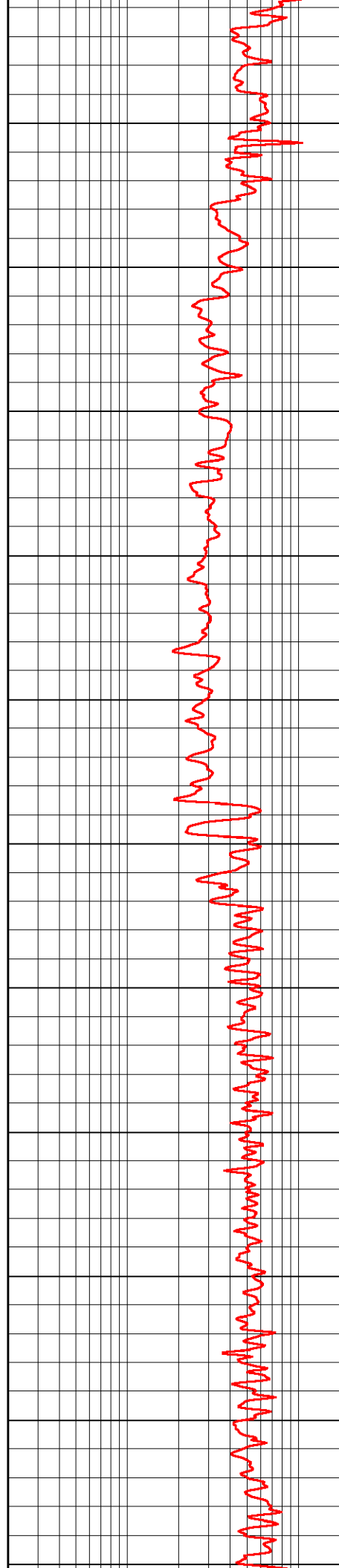
1250

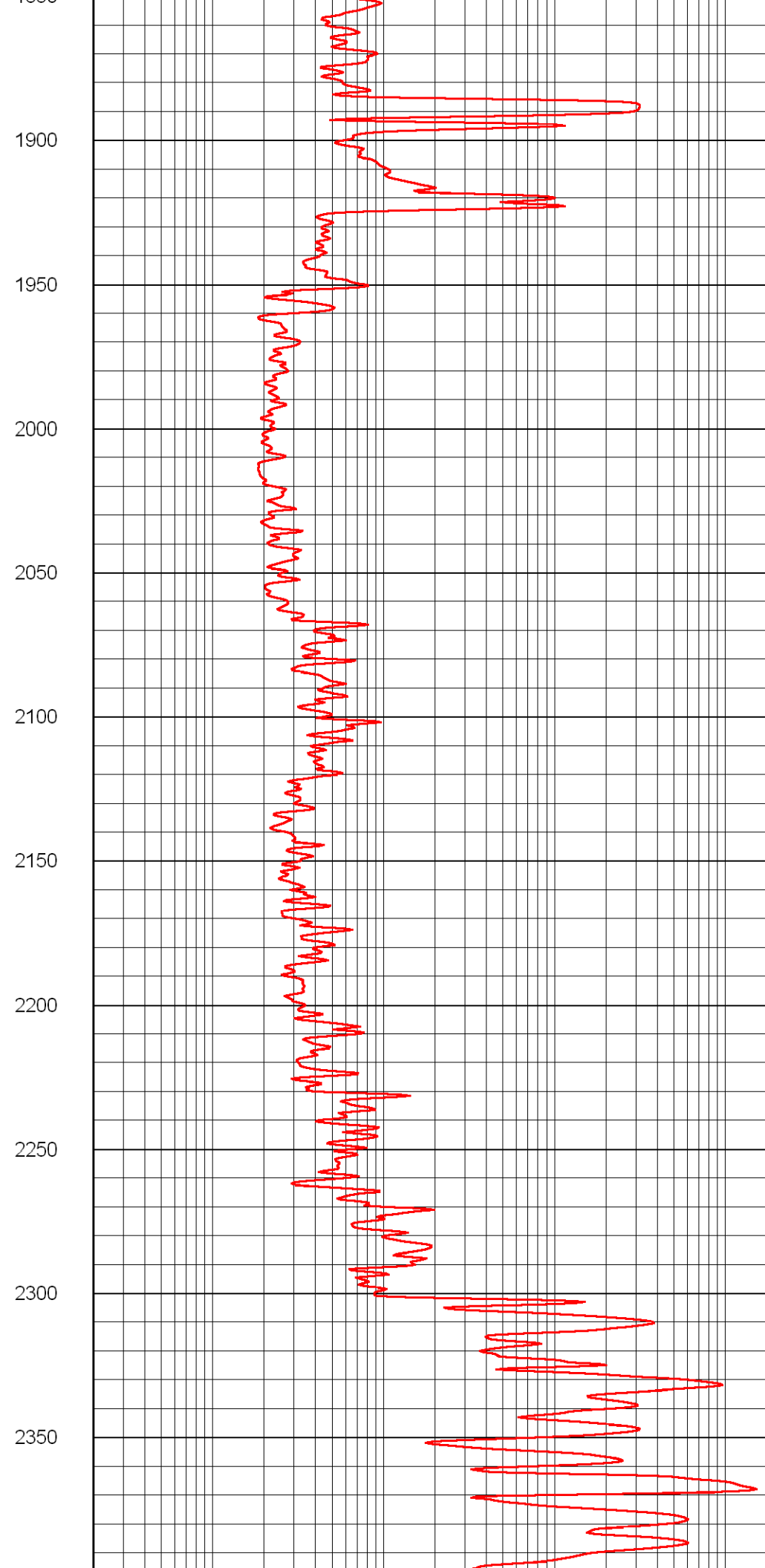
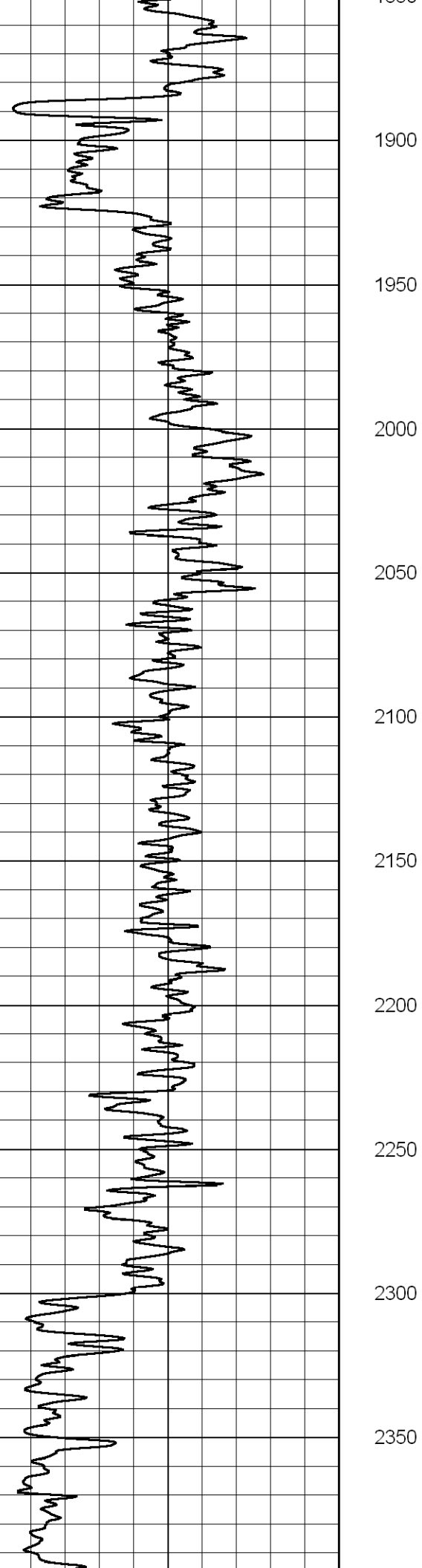
1300

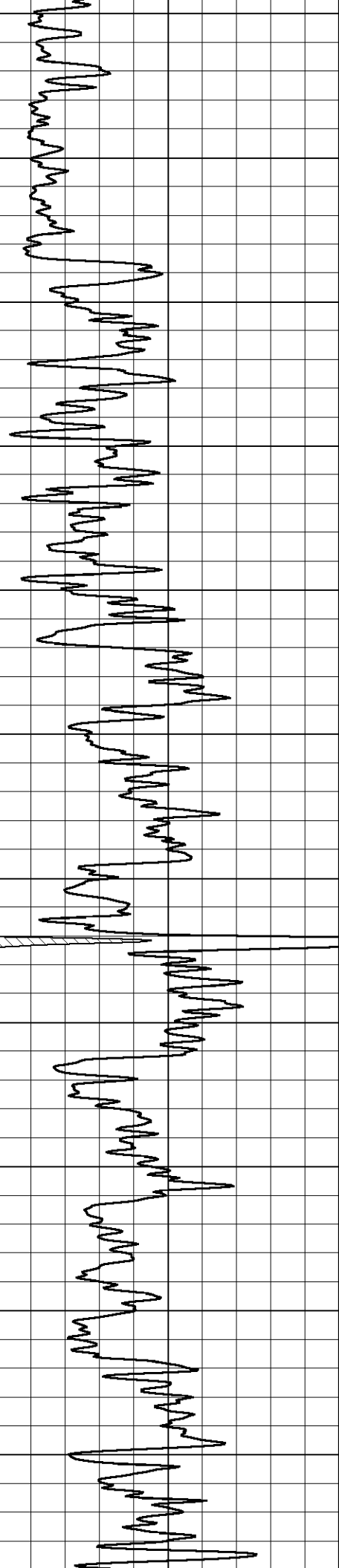




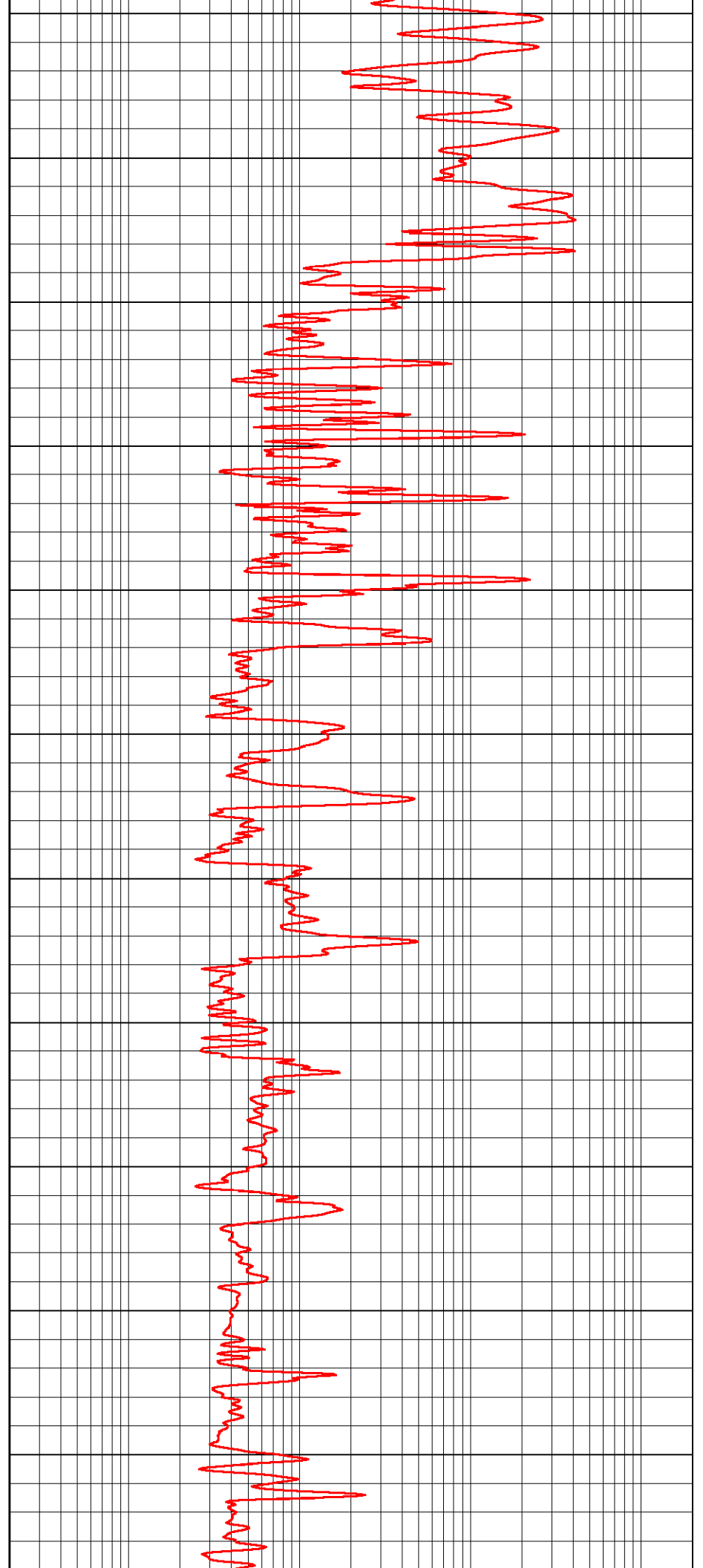
1350  
1400  
1450  
1500  
1550  
1600  
1650  
1700  
1750  
1800  
1850

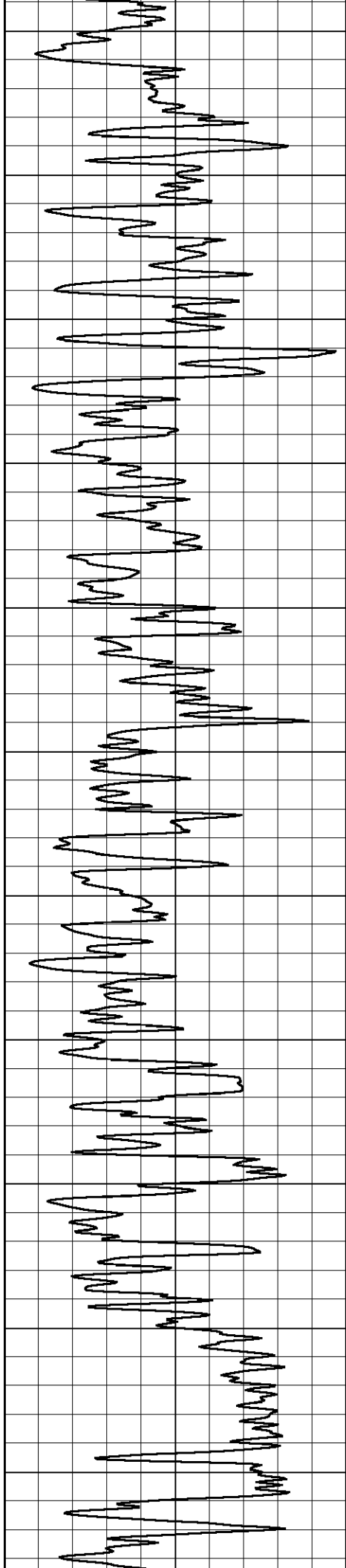






2400  
2450  
2500  
2550  
2600  
2650  
2700  
2750  
2800  
2850  
2900





2950

3000

3050

3100

3150

3200

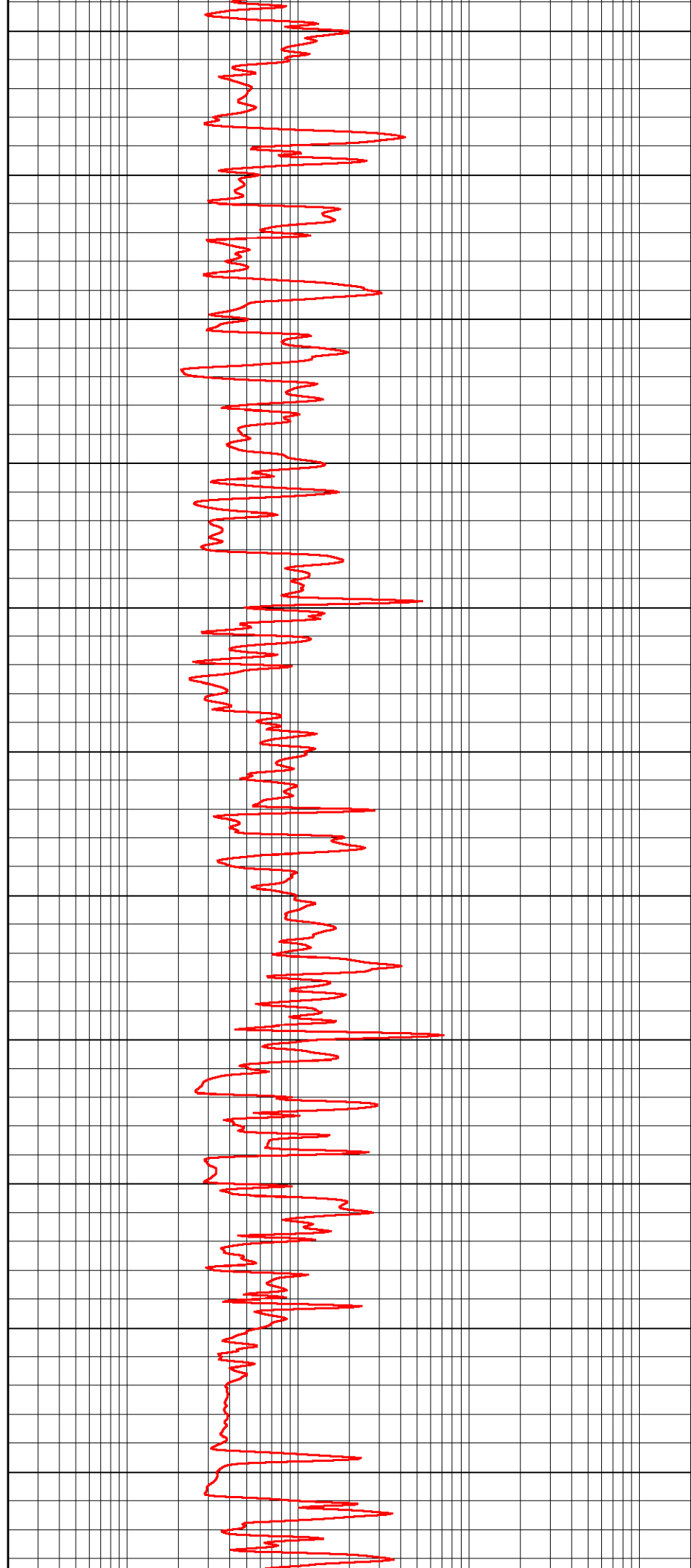
3250

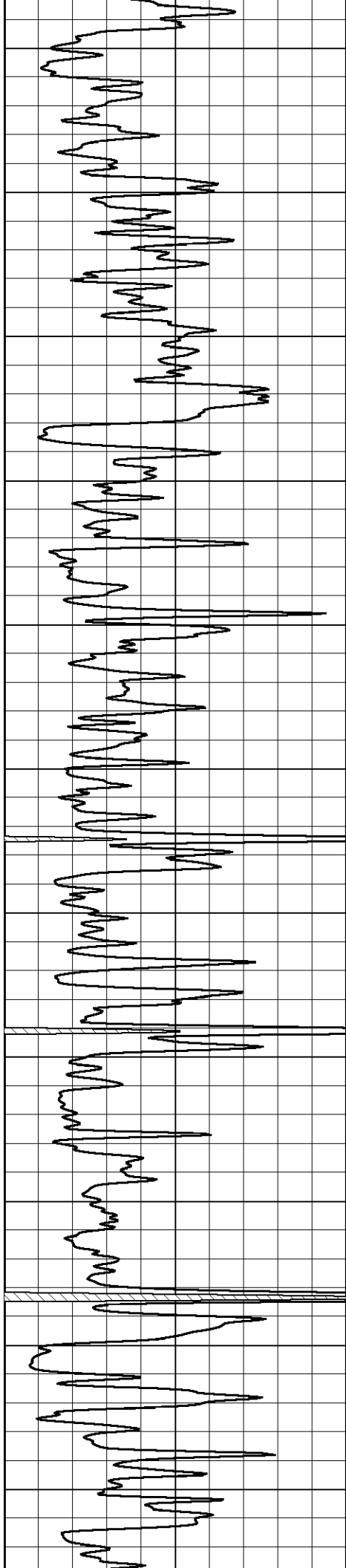
3300

3350

3400

3450





3500

3550

3600

3650

3700

3750

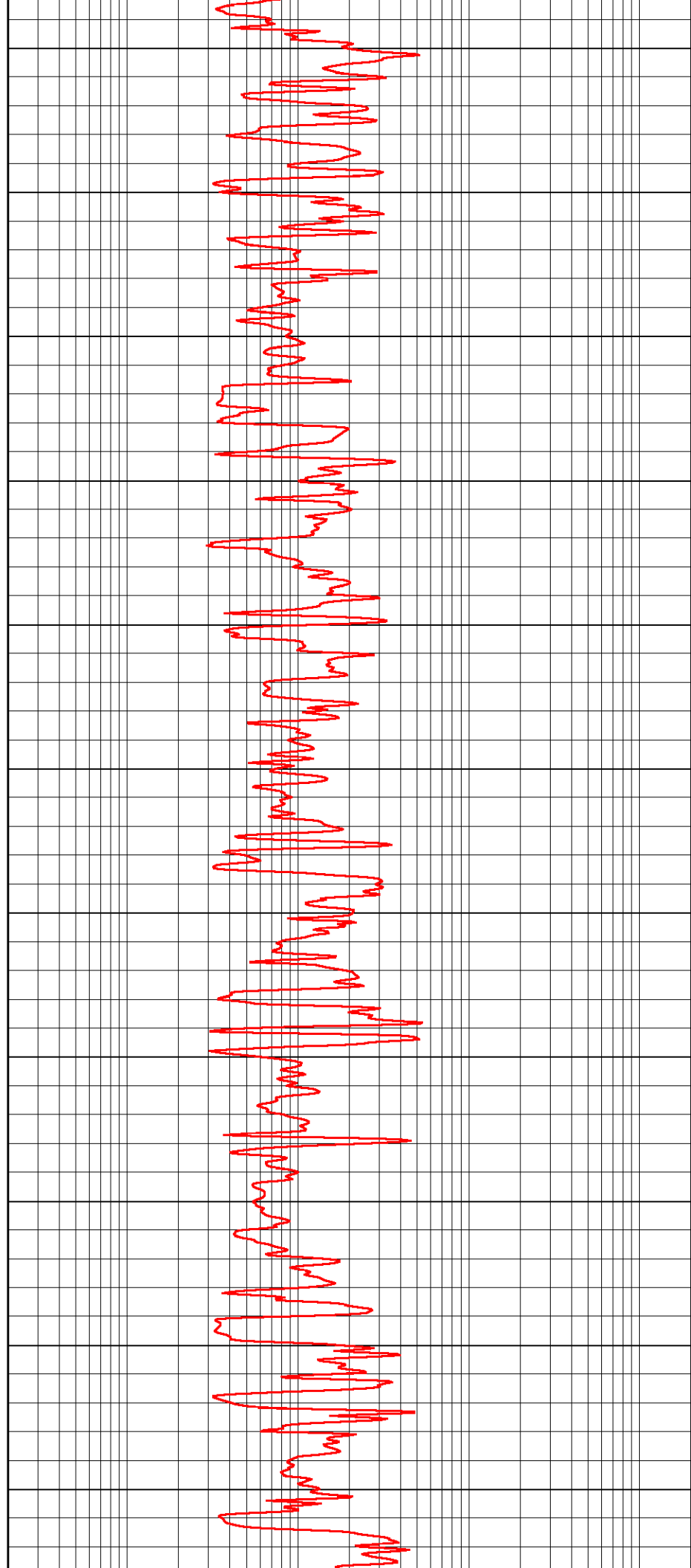
3800

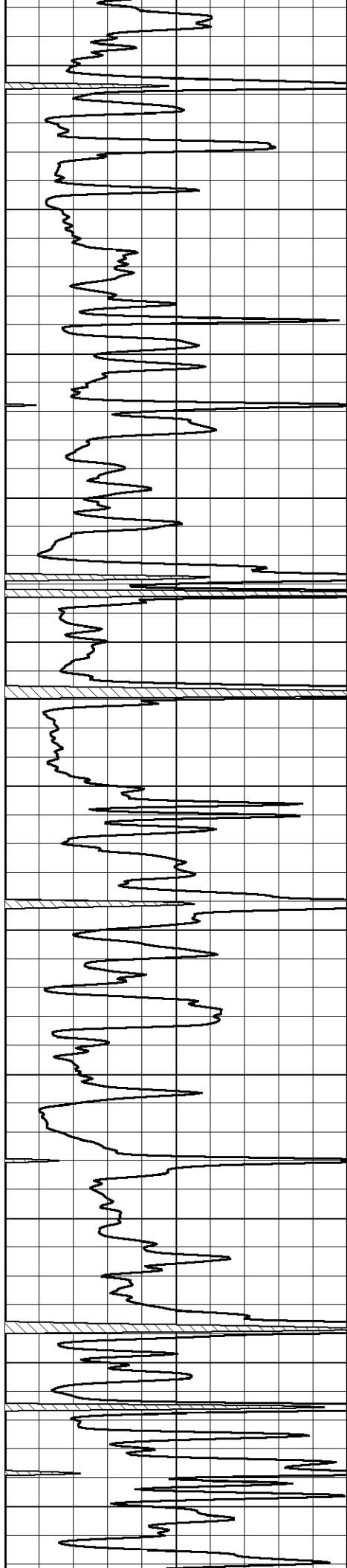
3850

3900

3950

4000





4050

4100

4150

4200

4250

4300

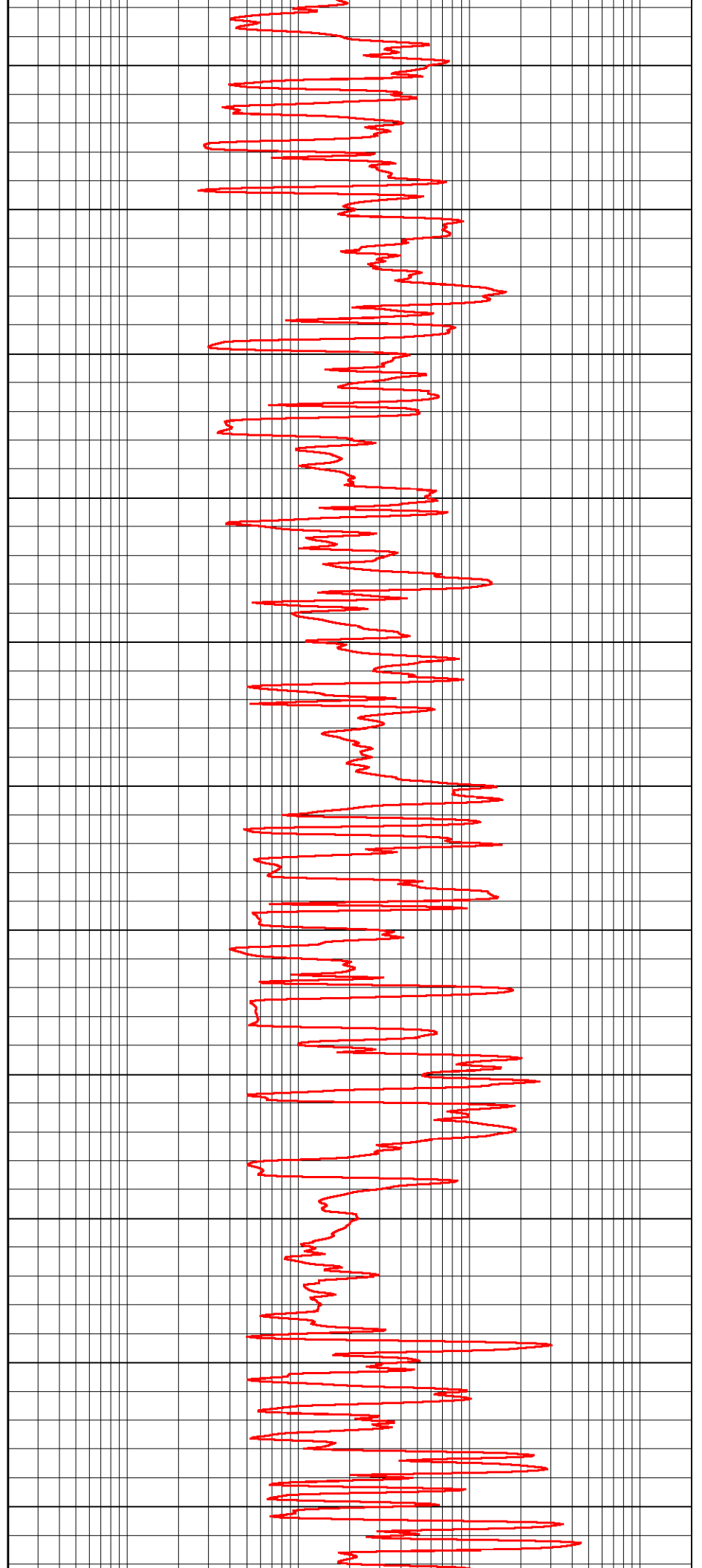
4350

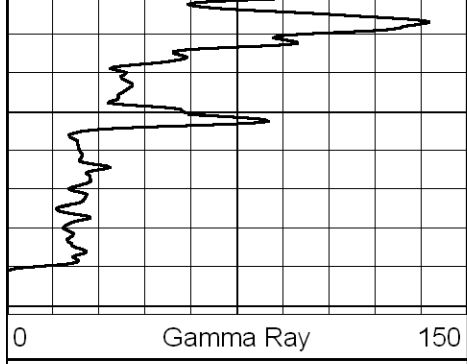
4400

4450

4500

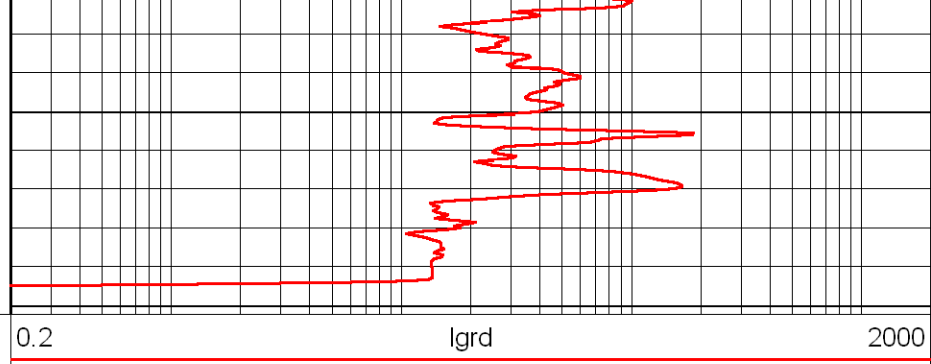
4550





4600

4650

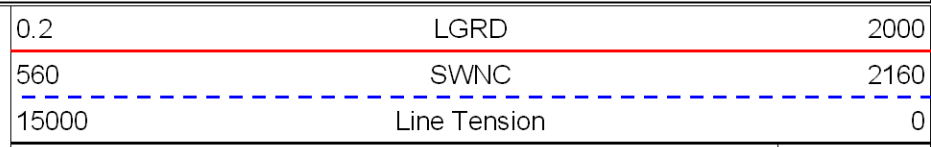
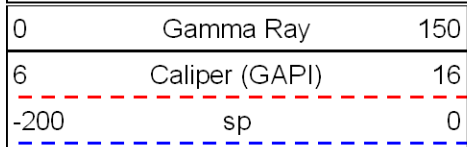


0.2

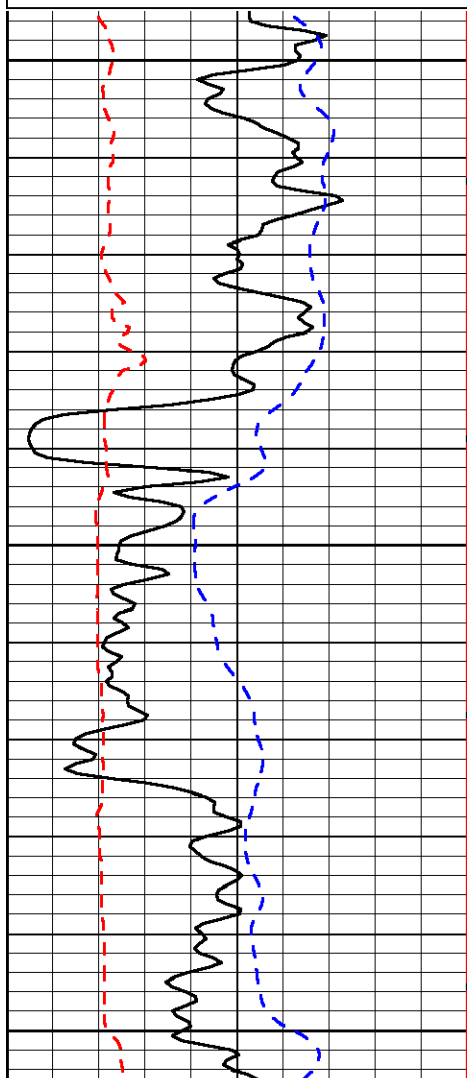
lgrd

2000

Database File: abercrombiehd.db  
 Dataset Pathname: rag/aberag2  
 Presentation Format: rag  
 Dataset Creation: Thu Oct 25 01:36:10 2012  
 Charted by: Depth in Feet scaled 1:240



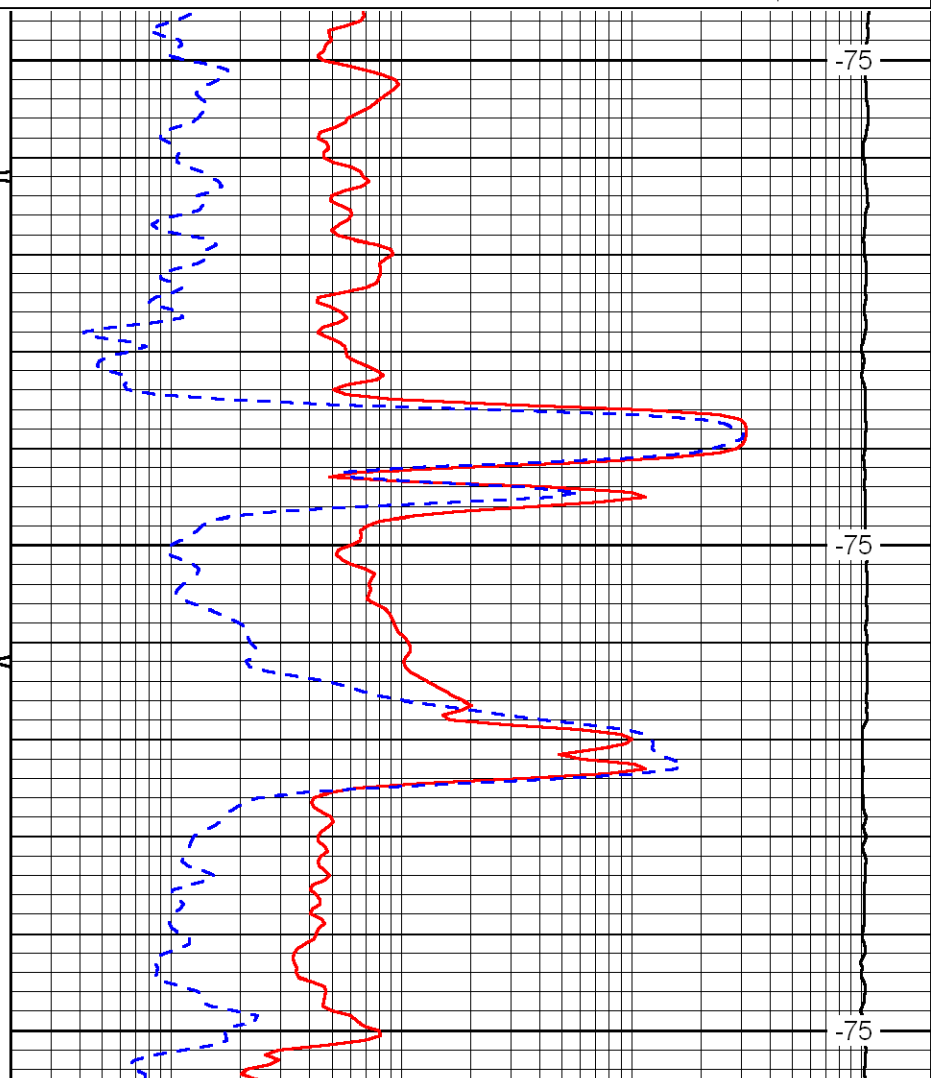
LSPD



1850

1900

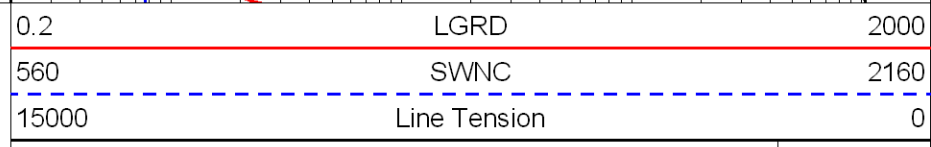
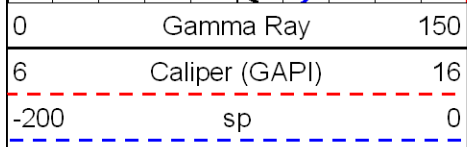
1950



-75

-75

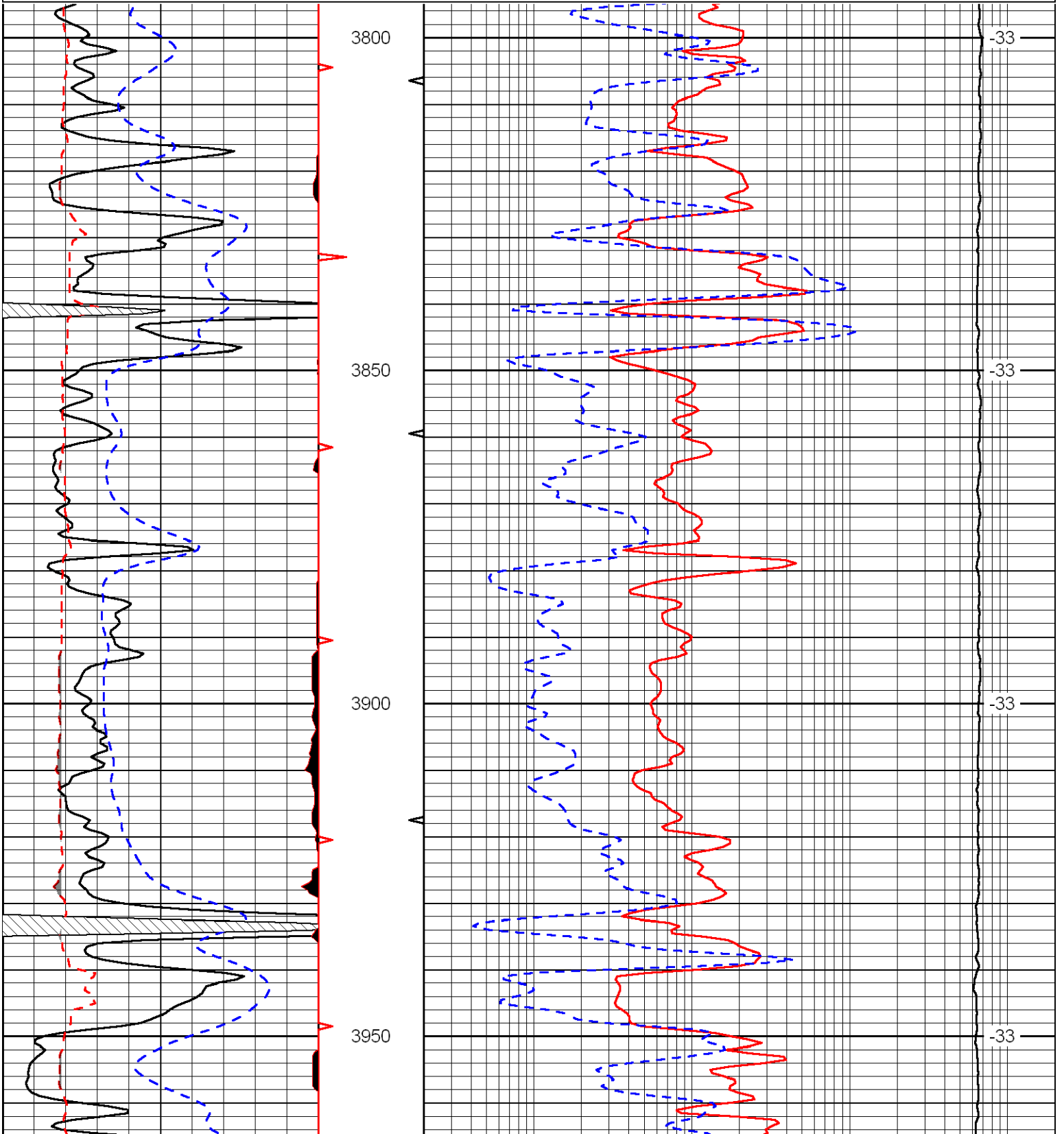
-75

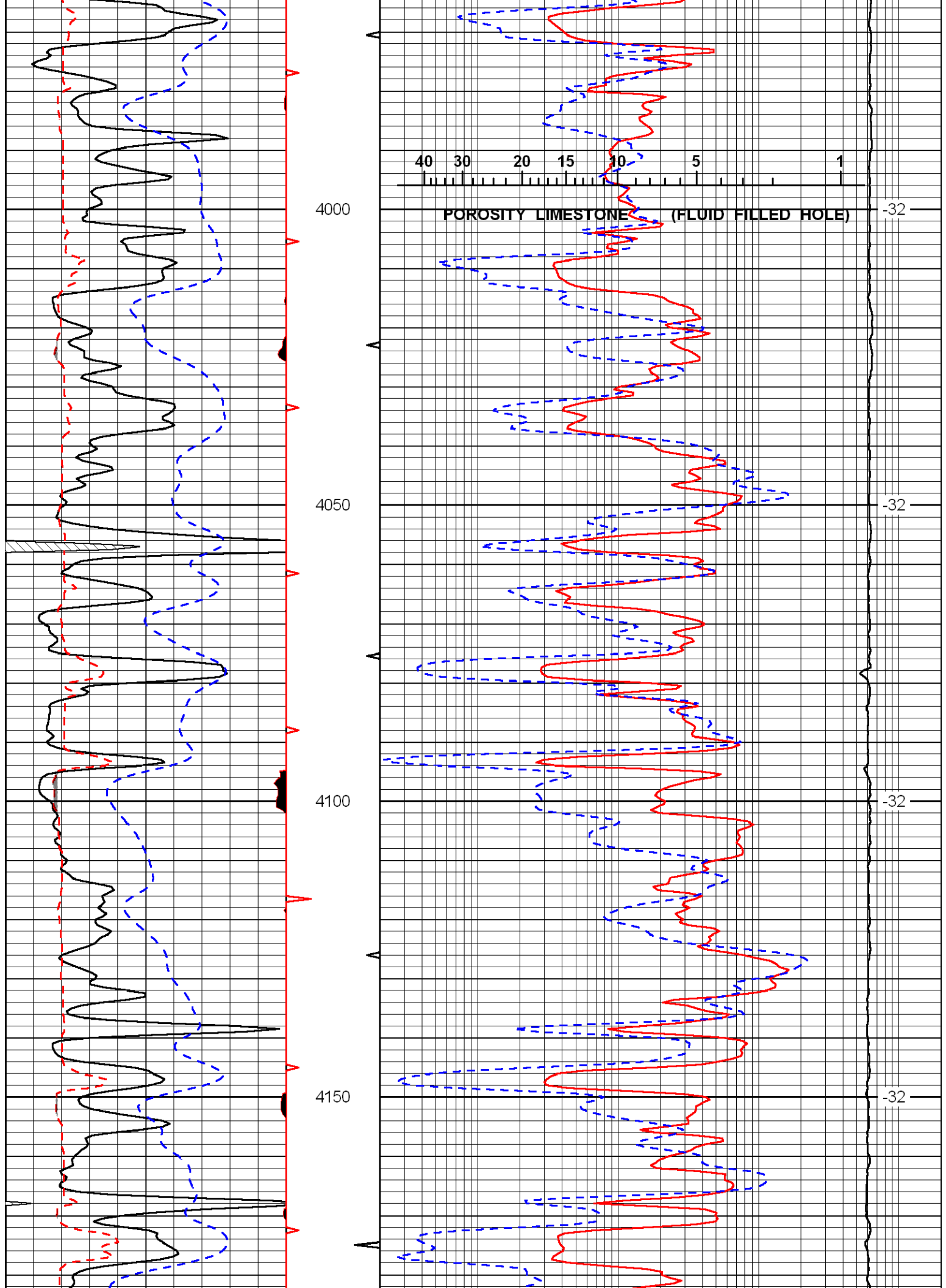


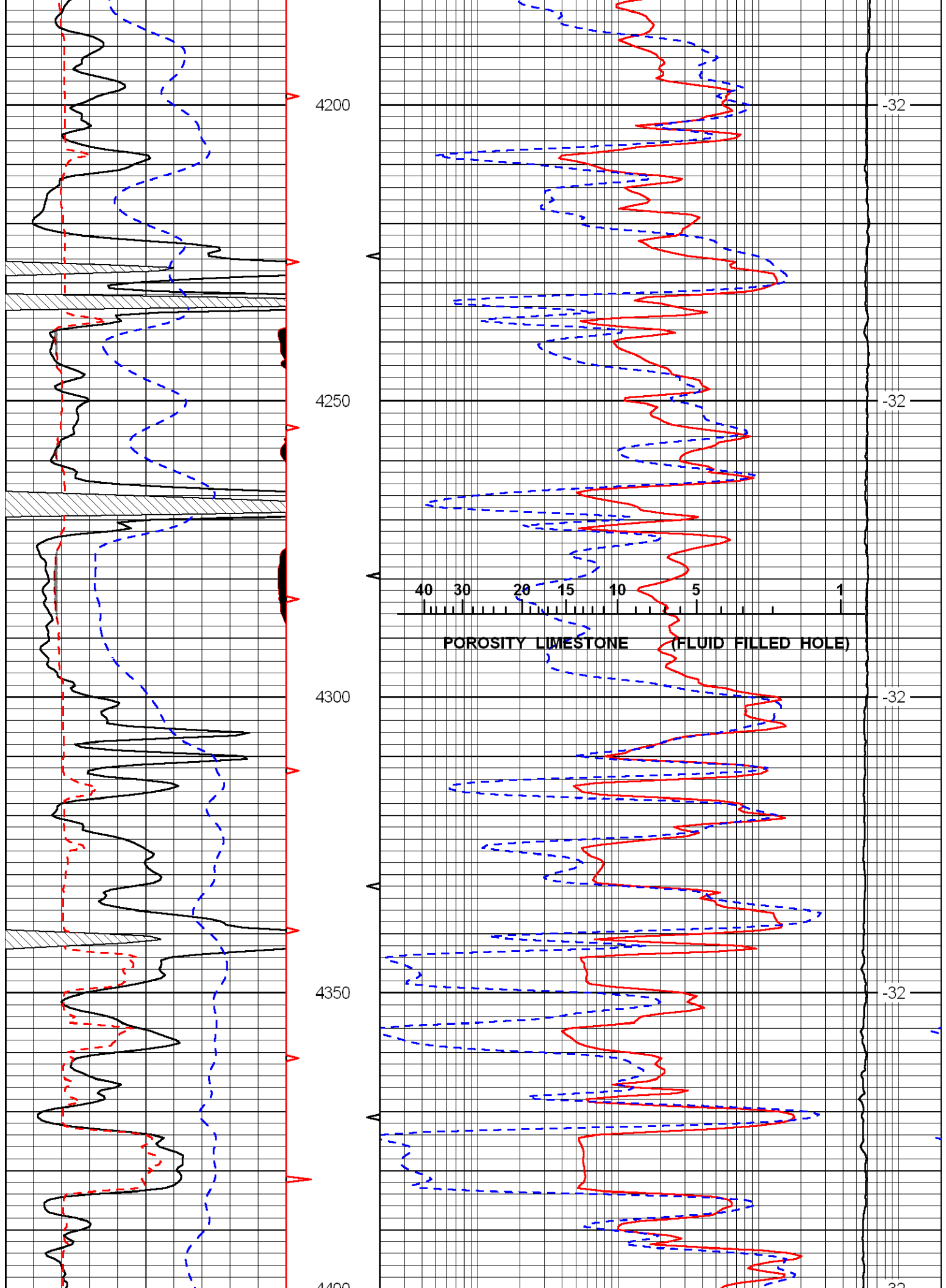
LSPD

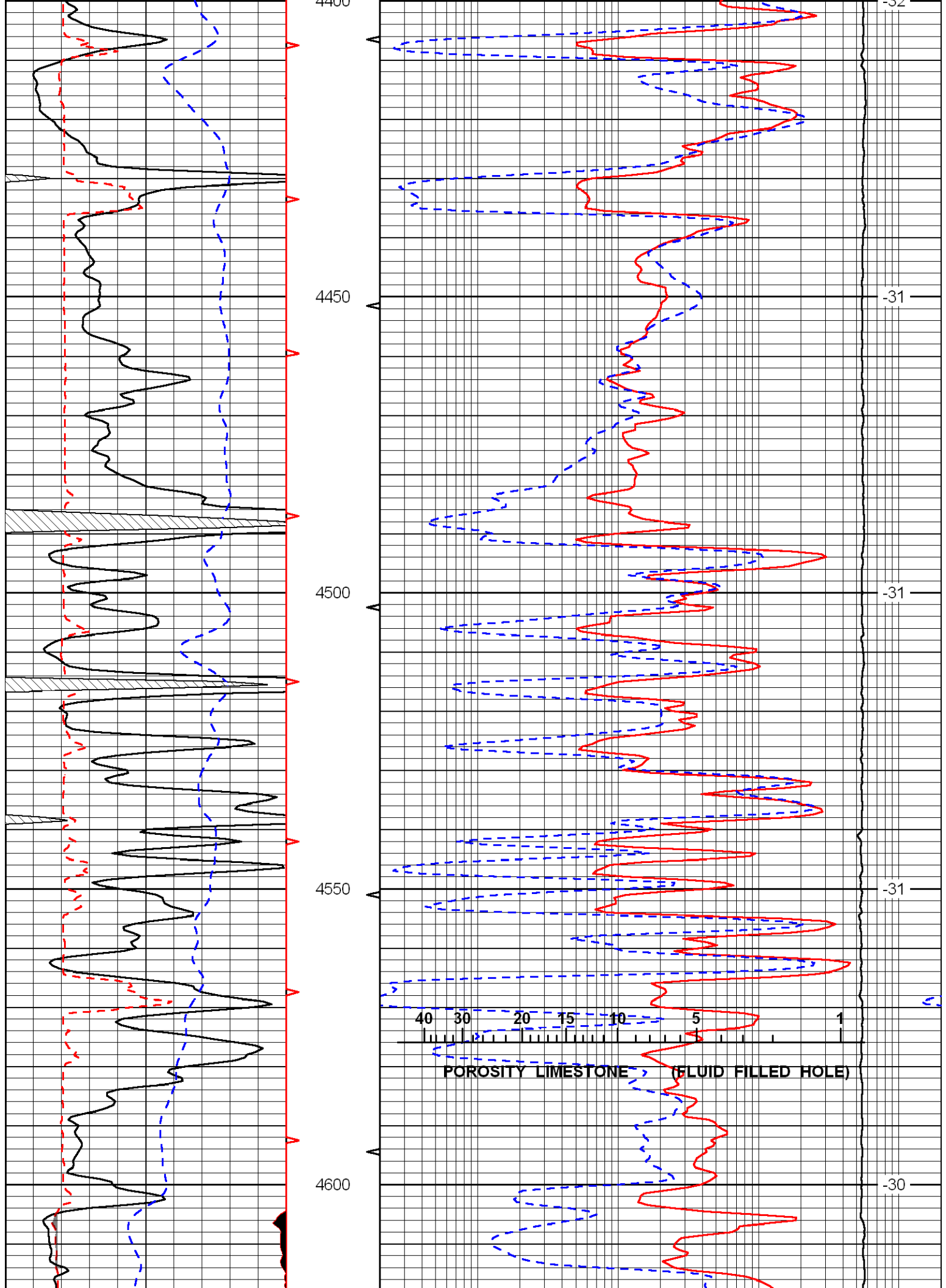
Database File: abercrombiehd.db  
 Dataset Pathname: rag/aberag2  
 Presentation Format: rag  
 Dataset Creation: Thu Oct 25 01:36:10 2012  
 Charted by: Depth in Feet scaled 1:240

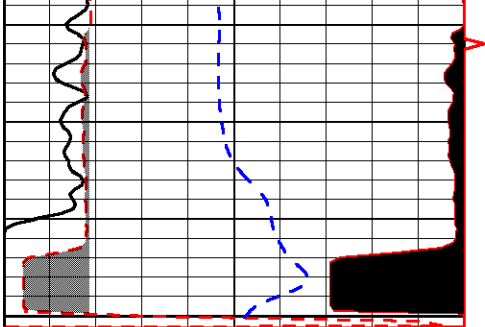
0	Gamma Ray	150	0.2	LGRD	2000
6	Caliper (GAPI)	16	560	SWNC	2160
-200	sp	0	15000	Line Tension	0
					LSPD





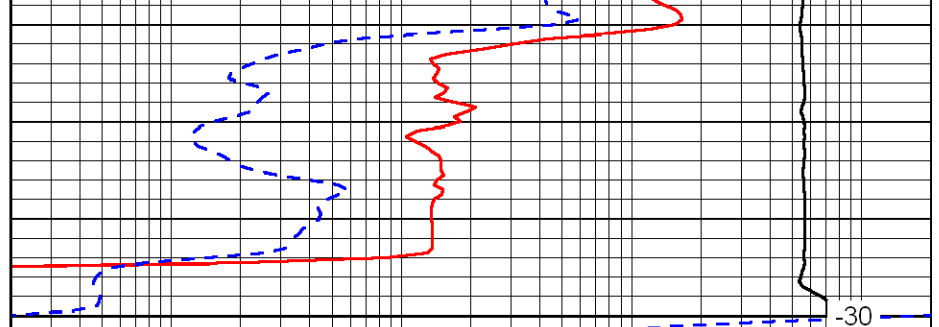






4650

0	Gamma Ray	150
6	Caliper (GAPI)	16
-200	sp	0



-30

0.2	LGRD	2000
560	SWNC	2160
15000	Line Tension	0

LSPD