



Pioneer Energy Services

## Computer Processed Interpretation

15-135-25,493-00-00

API No.

Company **Abercrombie Energy, LLC**

Well **Ayers No.2-13**

Field **WCV**

County **Ness** State **Kansas**

Location **575' FSL & 475' FWL**

Other Services  
RAG/BHCS  
MEL

Sec: **13** Twp: **19S** Rge: **26W**

Permanent Datum **Ground Level** Elevation **2611**

Log Measured From **Kelly Bushing** 10 Ft. Above Perm. Datum

Drilling Measured From **Kelly Bushing** K.B. 2621  
D.F. 2611  
G.L. 2611

Date Recorded **10/24/2012**

Depth Logger **4647**

Curve Definitions

SW **Water Saturation**

SXO **Water Saturation In The Flushed Zone**

VCL **Volume Of Clay**

PHIE **Density - Neutron Crossplot Shale Corrected**

BWV **Bulk Volume Water**

BWMSXO **Bulk Volume Water In Flushed Zone**

DCAL **Caliper**

SPC **SP Corrected For Baseline**

DGA **Apparent Grain Density**

Payflag **If PHIE> 2 %, VCL< 40 %, SPC> -10 , SW< 40 % & SCAL< 10**

Recorded By **C. Desaire**

Witnessed By **Kevin Kessler**

Analysis By **T. Martin**

<<< Fold Here >>>

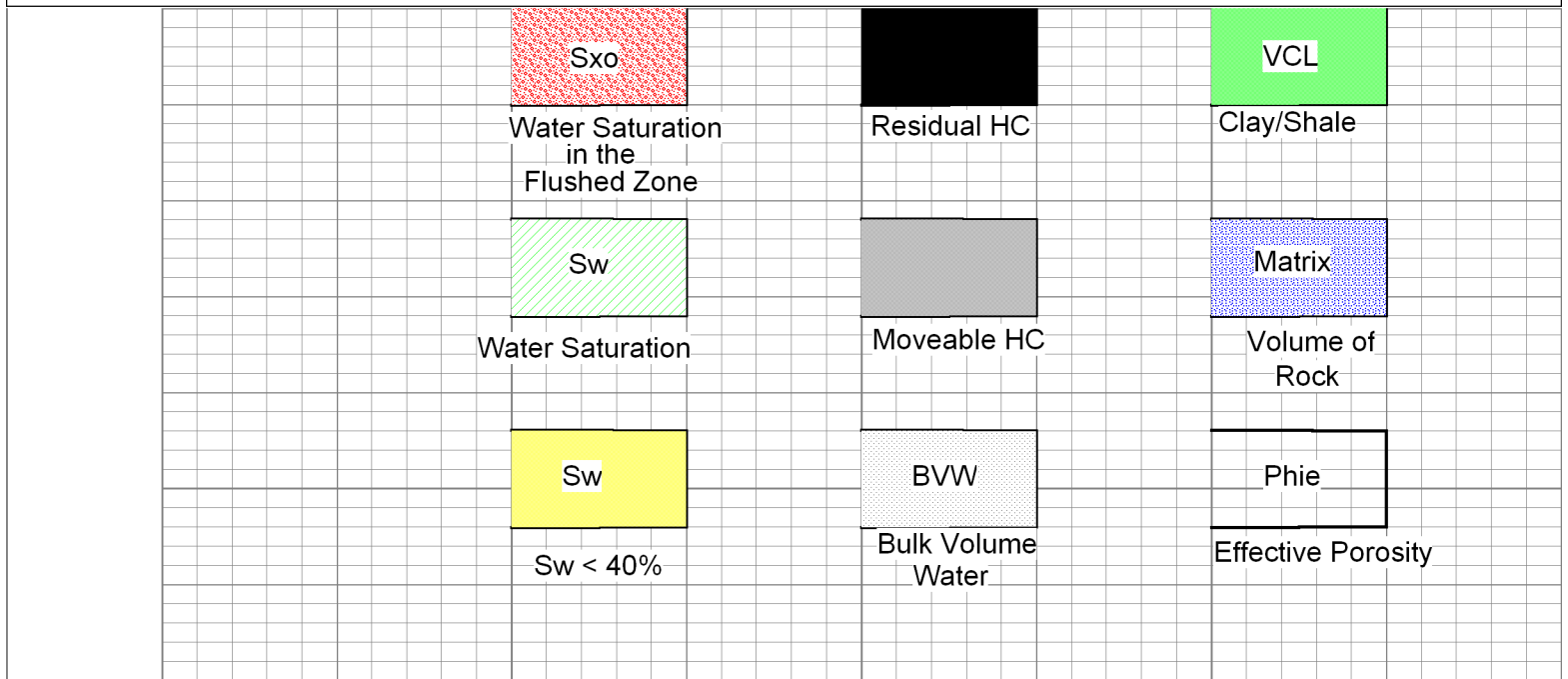
All interpretations are opinions based on inferences from electrical or other measurements and we cannot and do not guarantee the accuracy or correctness of any interpretation, and we shall not, except in the case of gross or willful negligence on our part, be liable or responsible for any loss, costs, damages, or expenses incurred or sustained by anyone resulting from any interpretation made by any of our officers, agents or employees. These interpretations are also subject to our general terms and conditions set out in our current Price Schedule.

### Comments

Thank you for using Log-Tech, Inc.  
[www.logtechinc.com](http://www.logtechinc.com)

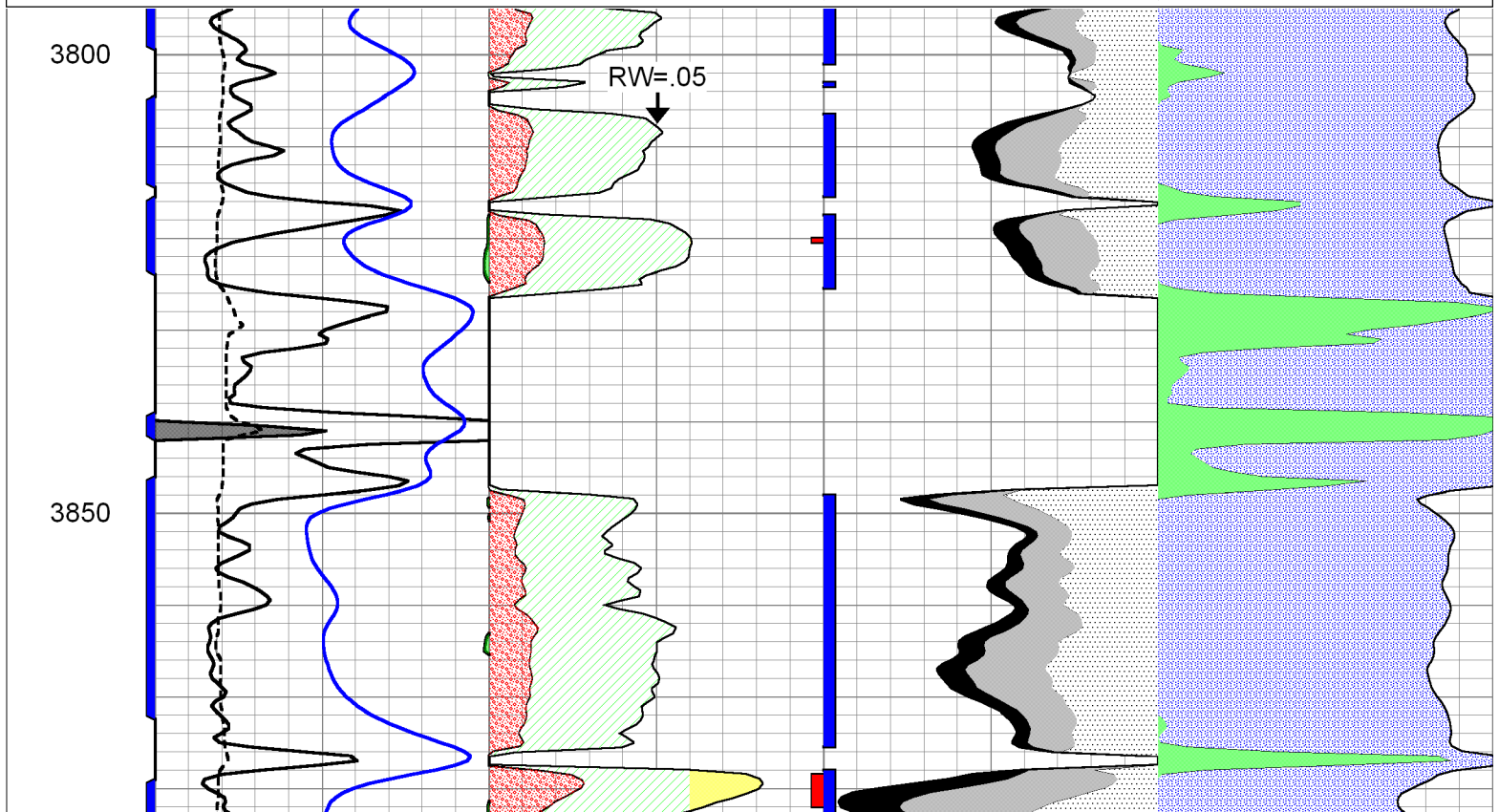
Beeler KS, 5 S on C Rd to 80 Rd,  
1 1/2 E to D5 Rd, 1/2 N to 85 Rd, 1 E, (thru cttl grd),  
N to 2nd set of Tank Batt, W past Pump Jack, Left at Y, Right at 2nd Pump Jack

Database File: c:\warrior\data\cross plots\1wxplt.db  
Dataset Pathname: litho  
Presentation Format: 1wxplt  
Dataset Creation: Thu Apr 24 14:32:02 1997  
Charted by: Depth in Feet scaled 1:240

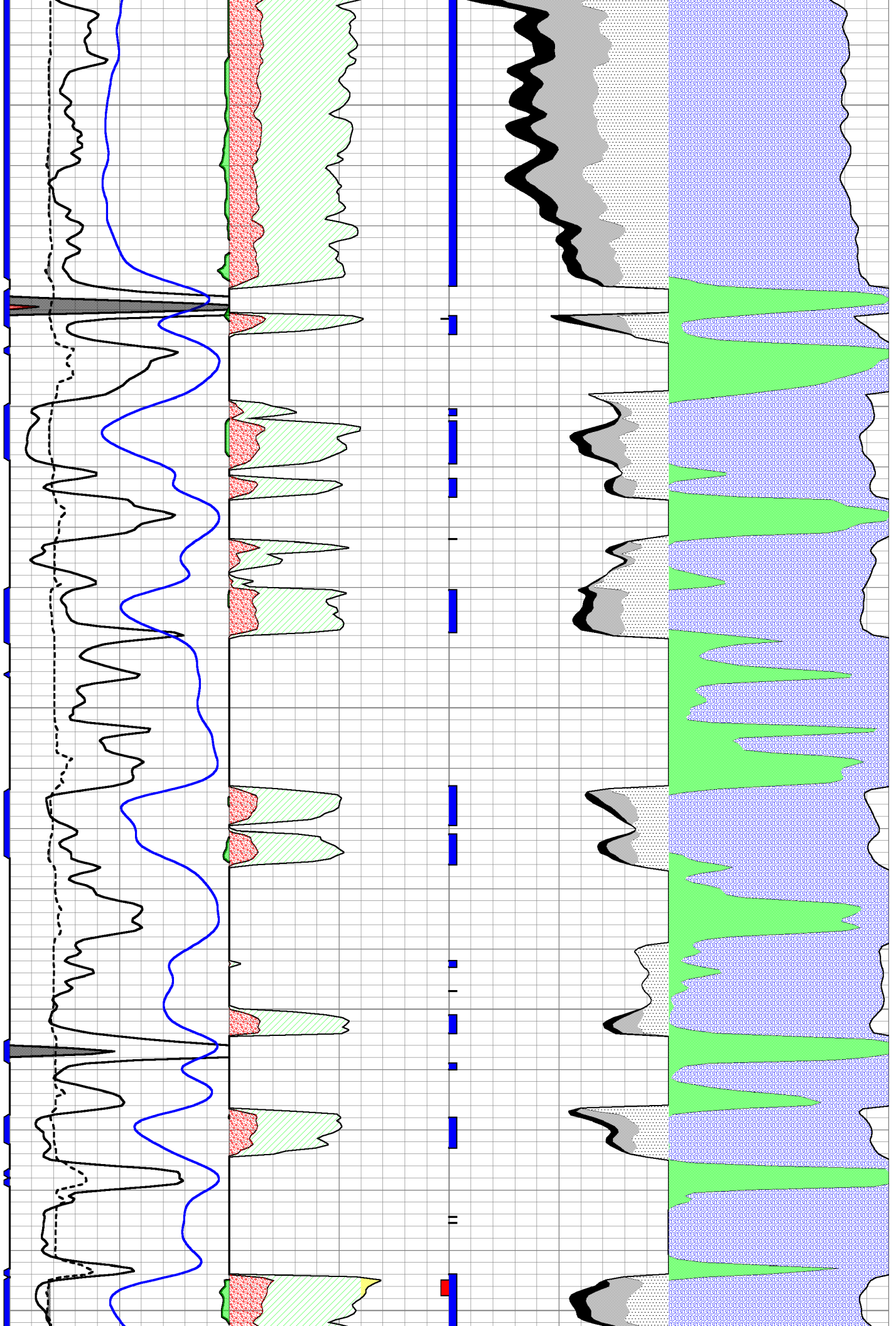


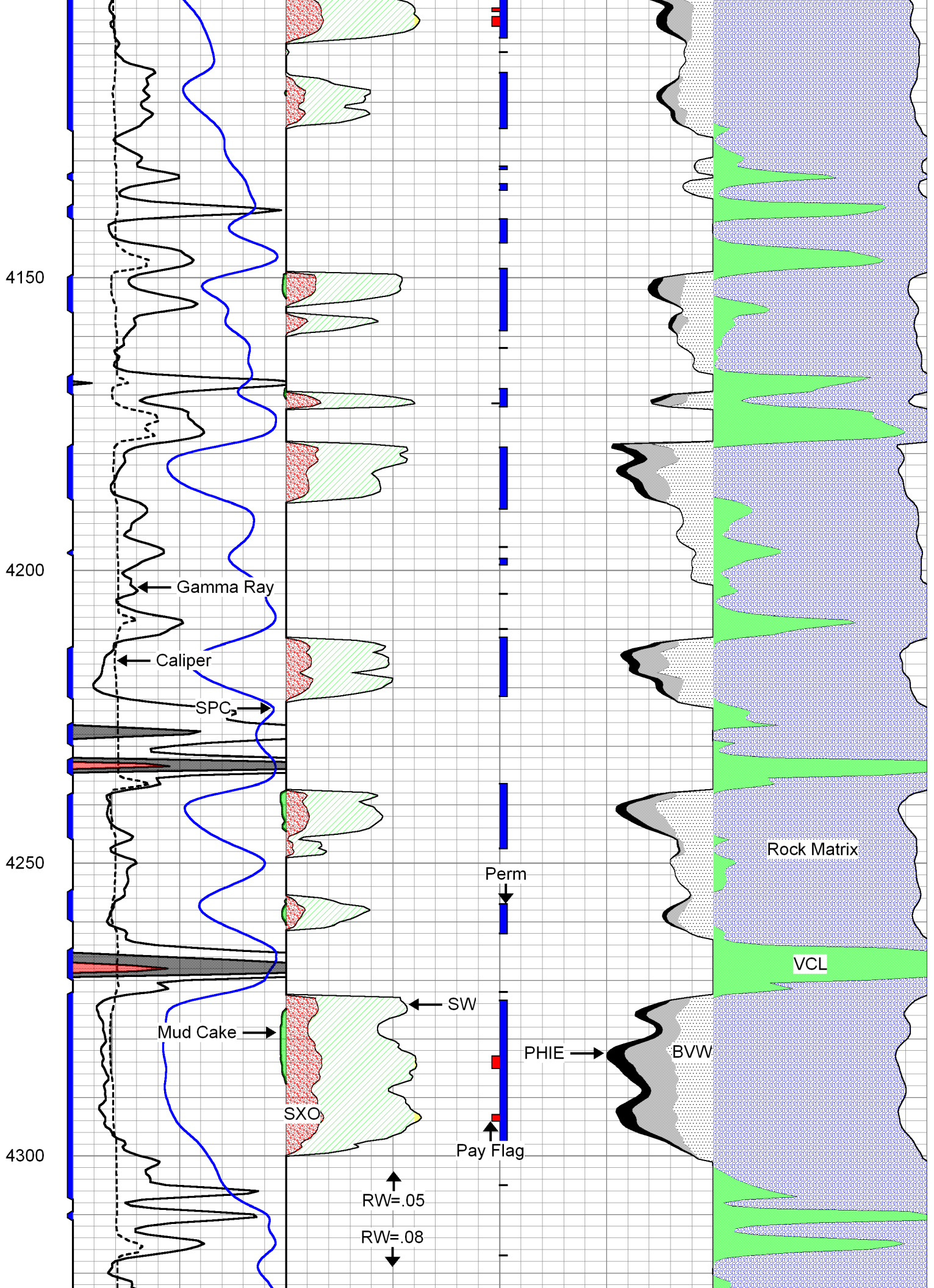
Database File: abercrombiehd.db  
 Dataset Pathname: rag/abcpi  
 Presentation Format: ragcalc  
 Dataset Creation: Thu Oct 25 14:47:52 2012  
 Charted by: Depth in Feet scaled 1:240

20	CLF	1	0	Gamma Ray	150	1	SW	0	0.3	PHIE	0	0	VCL	1
			6	SCAL	16	30	PAYFLAG	0	0.3	BVW	0	1	PHIE	0
			-150	SPC	0	1	SXO	0	0	PERM	30			
								0.3		BVWSXO	0			



3900  
3950  
4000  
4050  
4100





4350

4400

4450

4500

