



Pioneer Energy Services

# Microresistivity Log

API No.	15-135-25,493-00-00	
Company	Abercrombie Energy, LLC	
Well	Ayers No.2-13	
Field	WCV	
County	Ness	State
		Kansas
Location	575' FSL & 475' FWL	
Sec: 13	Twp: 19S	Rge: 26W
Permanent Datum	Ground Level	Elevation 2611
Log Measured From	Kelly Bushing	10 Ft. Above Perm. Datum
Drilling Measured From	Kelly Bushing	K.B. 2621 D.F. 2611 G.L. 2611

Date	10/24/2012
Run Number	Two
Depth Driller	4655
Depth Logger	4647
Bottom Logged Interval	4646
Top Log Interval	3800
Casing Driller	8.625 @ 280
Casing Logger	283
Bit Size	7.875
Type Fluid in Hole	Chemical
Salinity, ppm CL	3,100
Density / Viscosity	9.3 63
pH / Fluid Loss	9.5 11.4
Source of Sample	Flowline
Rm @ Meas. Temp	.95 @ 54
Rmf @ Meas. Temp	.71 @ 54
Rmc @ Meas. Temp	1.28 @ 54
Source of Rmf / Rmc	Charts
Rm @ BHT	.42 @ 122
Operating Rig Time	4 1/2 Hours
Max Rec. Temp. F	122
Equipment Number	17
Location	Hays
Recorded By	C. Desaire
Witnessed By	Kevin Kessler

<<< Fold Here >>>

All interpretations are opinions based on inferences from electrical or other measurements and we cannot and do not guarantee the accuracy or correctness of any interpretation, and we shall not, except in the case of gross or willful negligence on our part, be liable or responsible for any loss, costs, damages, or expenses incurred or sustained by anyone resulting from any interpretation made by any of our officers, agents or employees. These interpretations are also subject to our general terms and conditions set out in our current Price Schedule.

### Comments

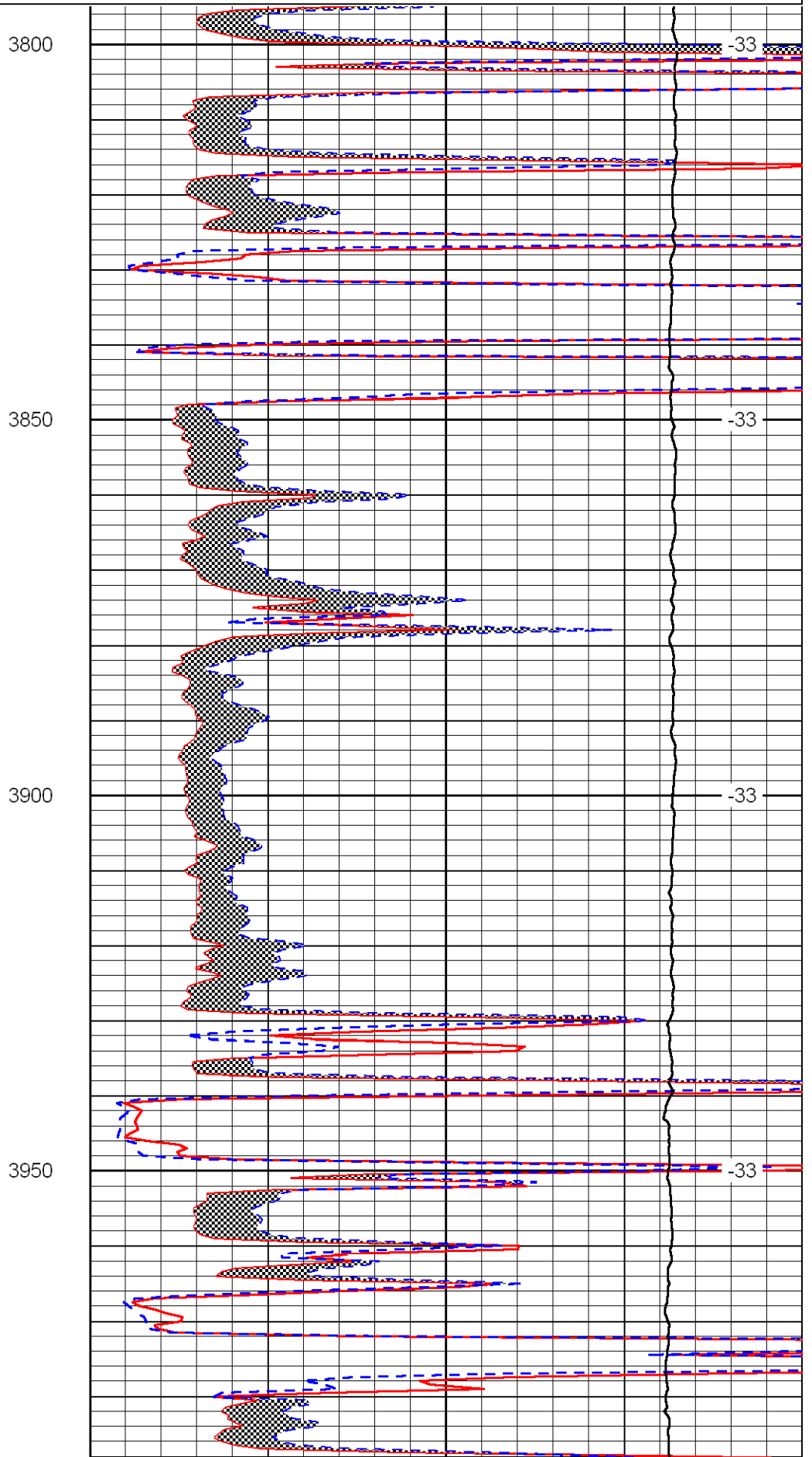
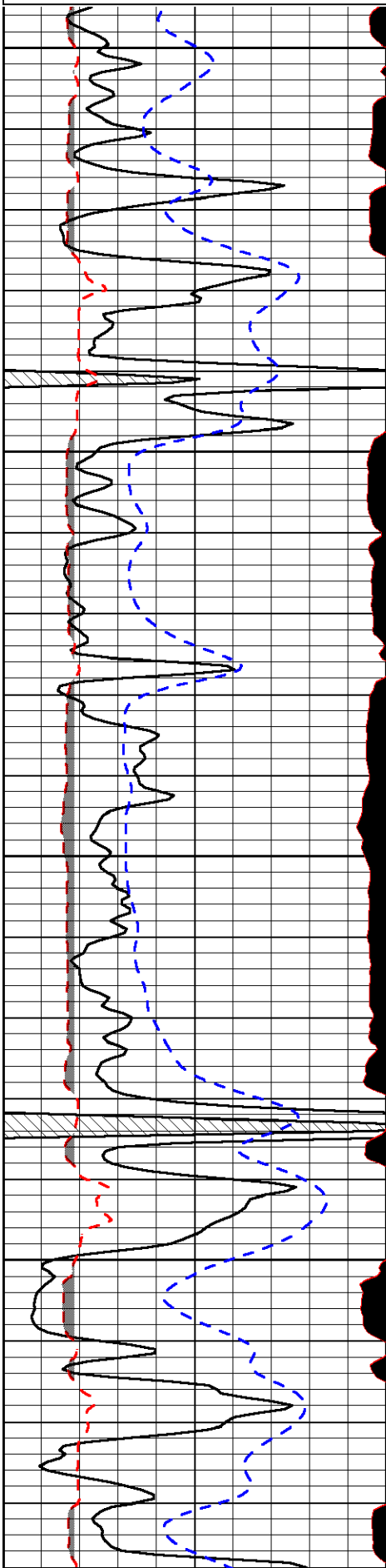
Thank you for using Log-Tech, Inc.  
(785) 625-3858

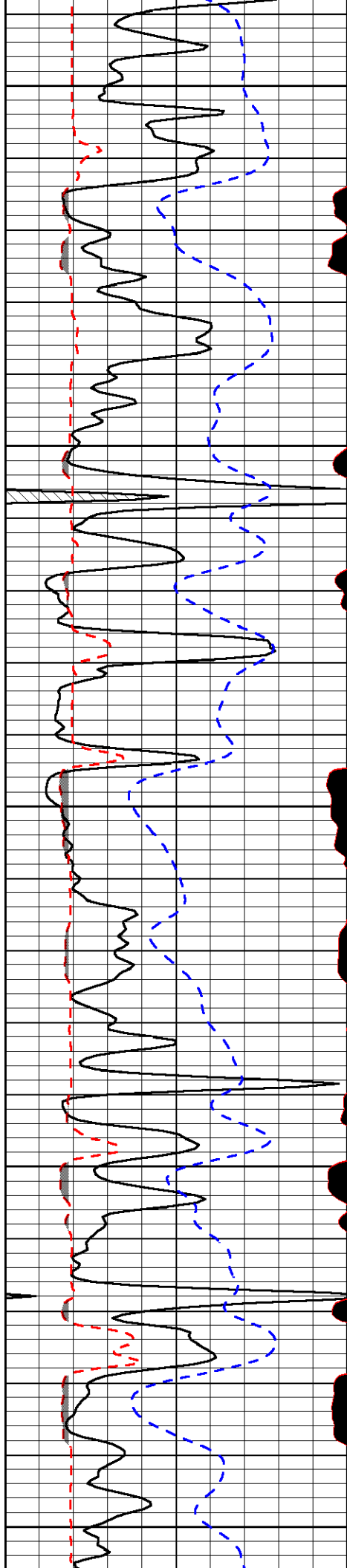
Beeler KS, 5 S on C Rd to 80 Rd,  
1 1/2 E to D5 Rd, 1/2 N to 85 Rd, 1 E, (thru cttl grd),  
N to 2nd set of Tank Batt, W past Pump Jack, Left at Y, Right at 2nd Pump Jack

Database File: abercrombiehd.db  
 Dataset Pathname: rag/aberag2  
 Presentation Format: micro  
 Dataset Creation: Thu Oct 25 01:36:10 2012  
 Charted by: Depth in Feet scaled 1:240

0	Gamma Ray	150
6	MCAL (GAPI)	16
2.875	Mud Cake (GAPI)	7.875
-200	SP	0

0	Micro Inverse 1 X 1	40
0	Micro Normal 2"	40
10000	Line Weight	0
		LSPD





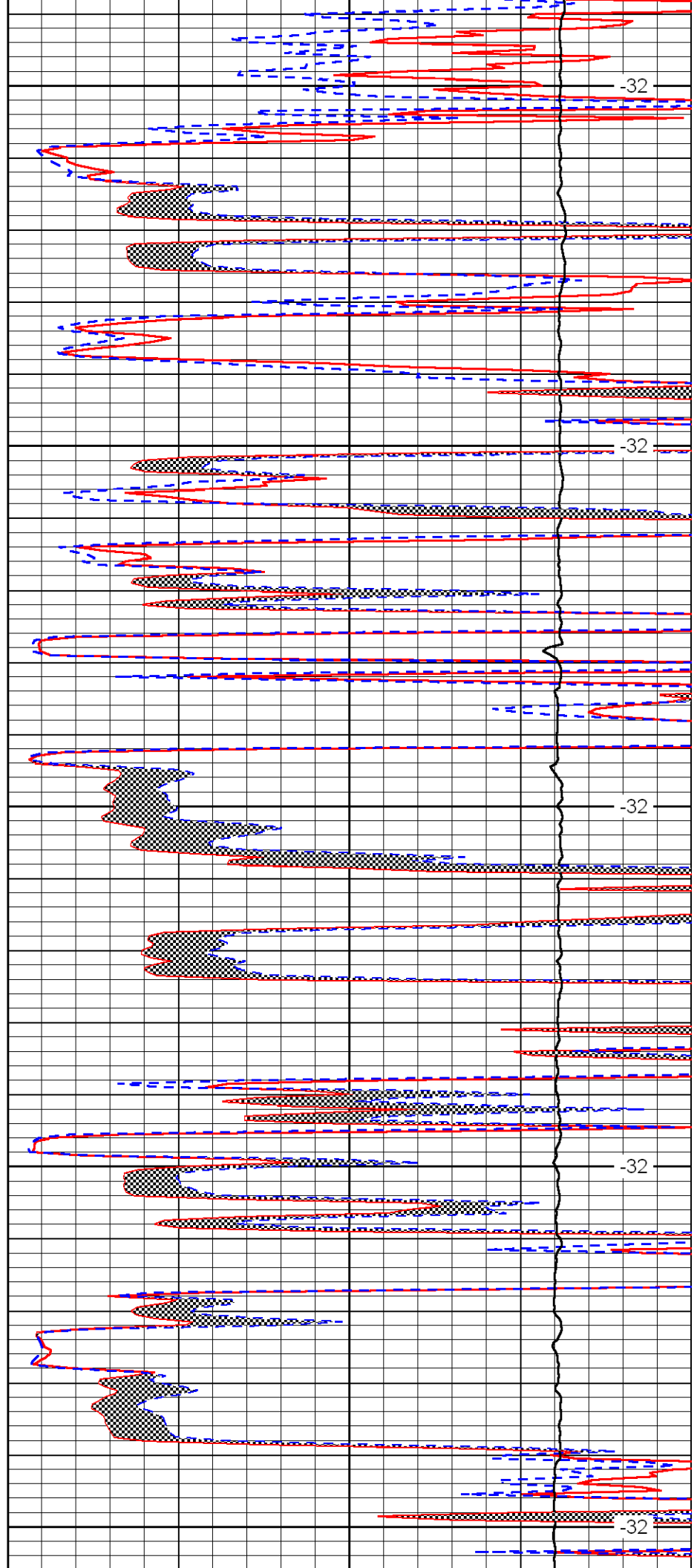
4000

4050

4100

4150

4200



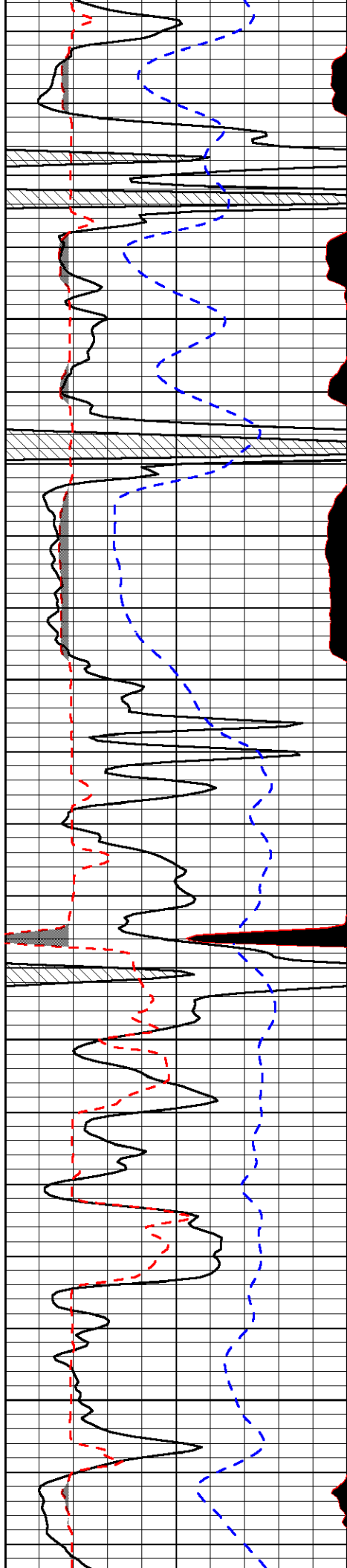
-32

-32

-32

-32

-32

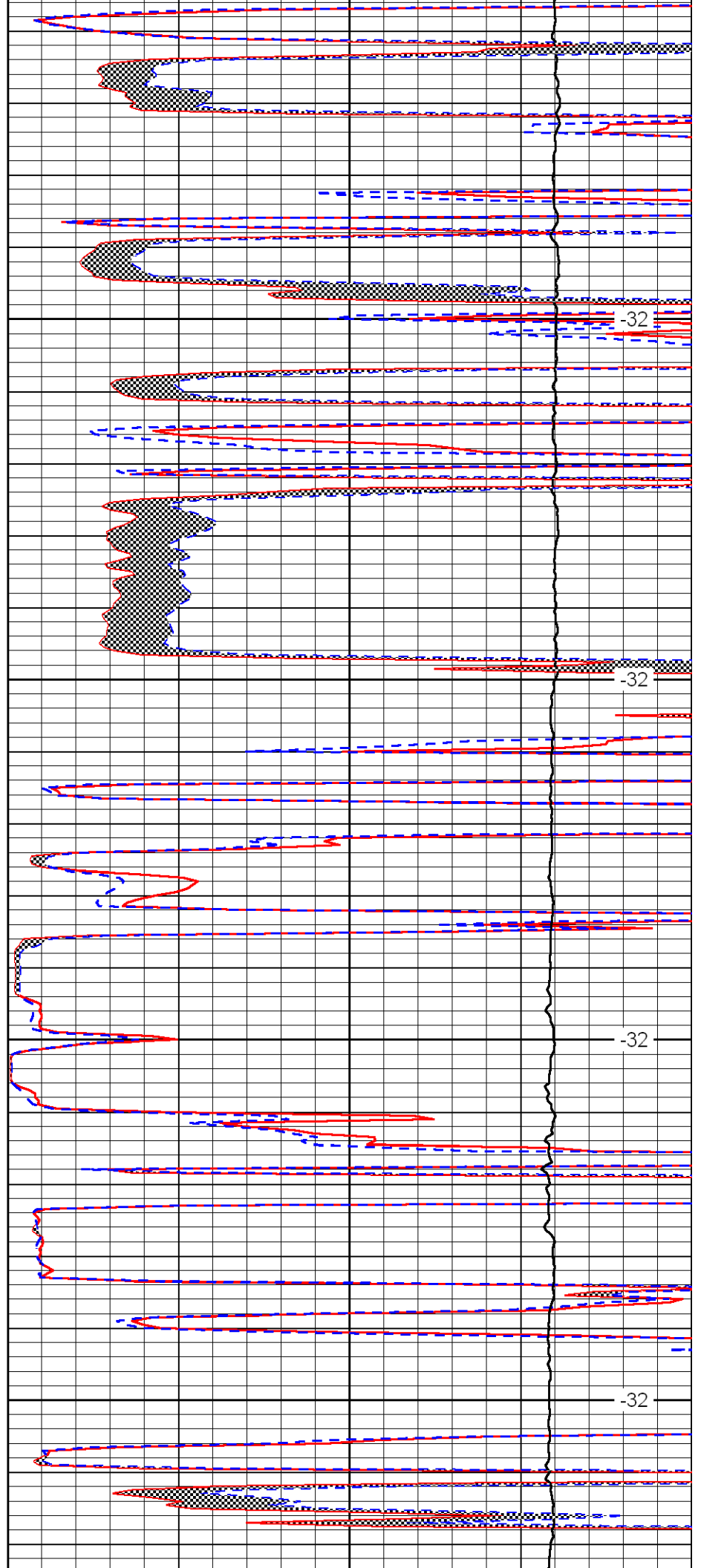


4250

4300

4350

4400

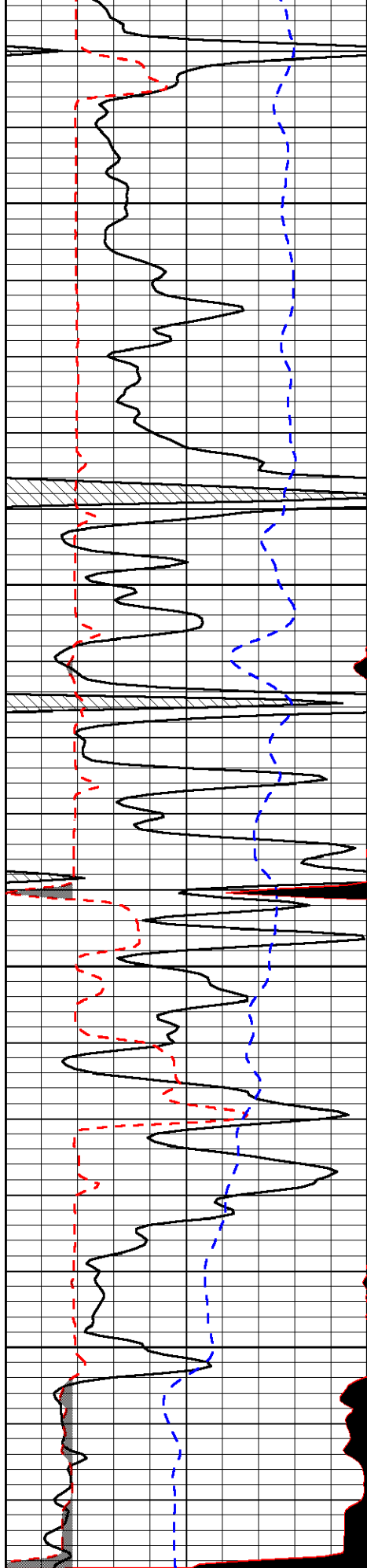


-32

-32

-32

-32

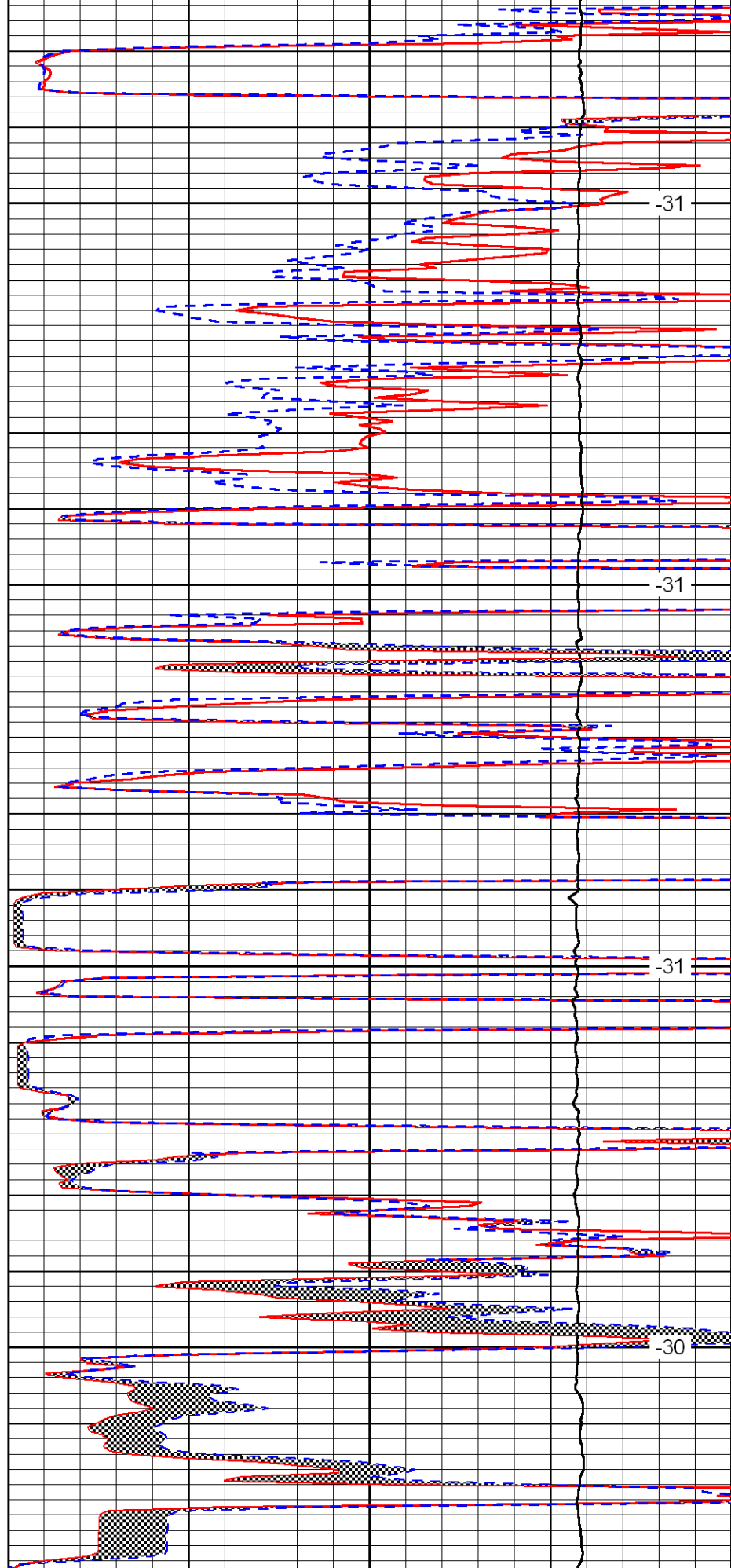


4450

4500

4550

4600



-31

-31

-31

-30

0	Gamma Ray	150
6	MCAL (GAPI)	16
2.875	Mud Cake (GAPI)	7.875
-200	SP	0

4650

0	Micro Inverse 1 X 1	40
0	Micro Normal 2"	40
10000	Line Weight	0
		LSPD

-30