



Pioneer Energy Services

Sonic Cement
Bond Log

15-203-20194-00-00

Company Lario Oil & Gas Company
Well Colburn Tucker No. 1-18
Field Wildcat
County Wichita
State Kansas

Location
330' FSL & 2384' FWL

Sec: 18 Twp: 19 S Rge: 35 W

Other Services
Perforate

Permanent Datum Ground Level Elevation 3193
Log Measured From Kelly Bushing 9 Ft. Above Perm. Datum
Drilling Measured From Kelly Bushing

K.B. 3202
D.F.
G.L. 3193

Run Number	One	
Date Survey	12/17/2012	
Date Cementing	12/06/2012	
Type Cementing Operation	Primary	
Depth Driller	5250	
Depth Logger	5090	
Logged Interval	5089 to 3100	
Casing Driller	5.5 @ TD	@
Float Collar -- D.V. Tool	////	2365
Squeeze Depth	////	
Amount & Type Cement	////	
Amount & Type Admix	////	
Type Fluid In Hole	Water	
Fluid Level	408	
Salinity PPM CL	////	
Weight lb/gal -- Vis.	////	////
Approx. Logged Cement Top	3220	
Calculated Cement Top		
Max. Hole Temperature	115	
Tool No.	RBT71	
Spacing Recorded	3-5	
Equipment -- Location	71	Hays
Recorded By	Scott Clemons	
Witnessed By	Mike Ketterling	

<<< Fold Here >>>

All interpretations are opinions based on inferences from electrical or other measurements and we cannot and do not guarantee the accuracy or correctness of any interpretation, and we shall not, except in the case of gross or willful negligence on our part, be liable or responsible for any loss, costs, damages, or expenses incurred or sustained by anyone resulting from any interpretation made by any of our officers, agents or employees. These interpretations are also subject to our general terms and conditions set out in our current Price Schedule.

Comments

Thank you for using Pioneer Energy Services
(785) 625-3858

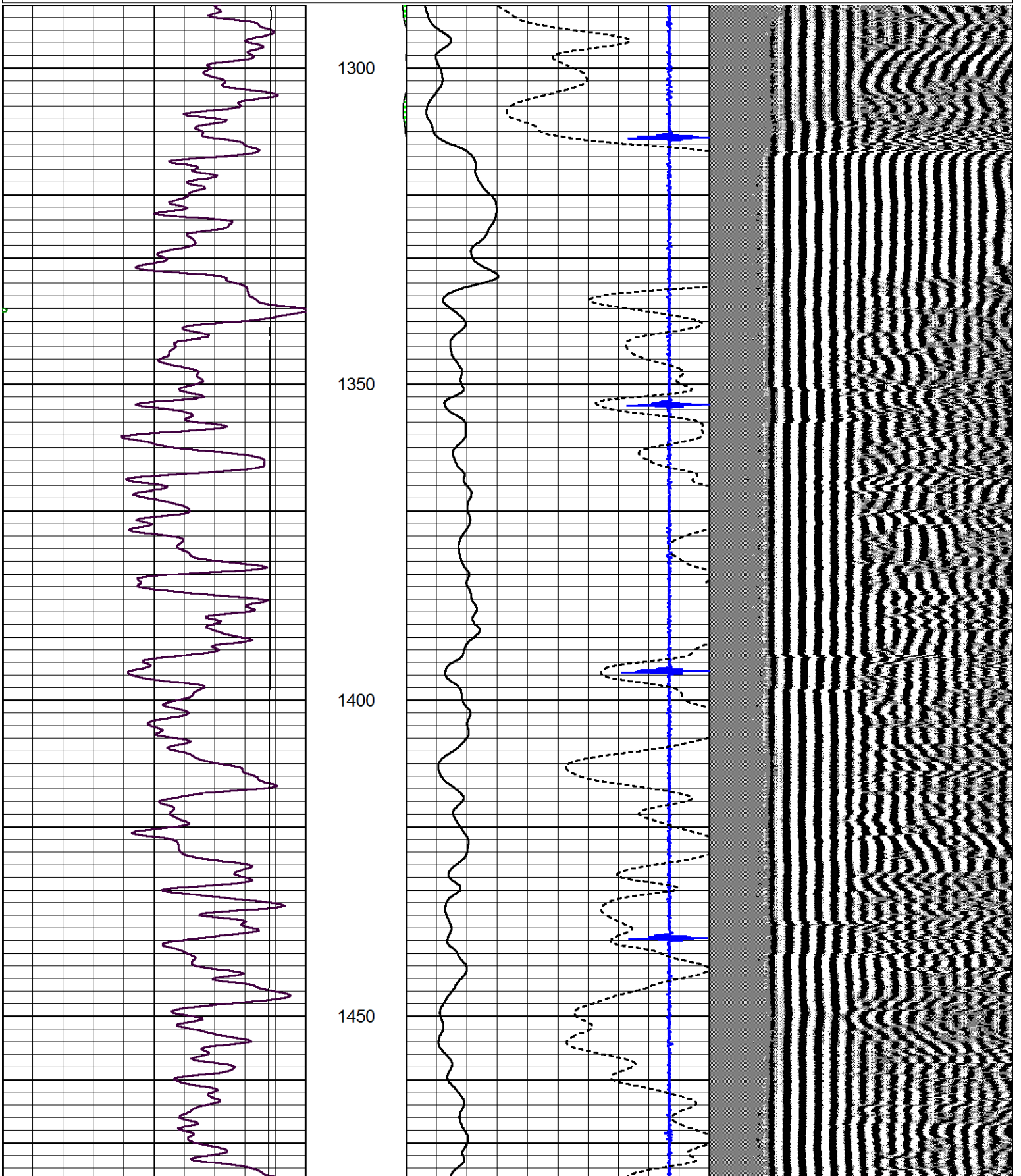
Scott City Ks., 17 West to Marianthol, 6 South on Rd. 20,
West Into

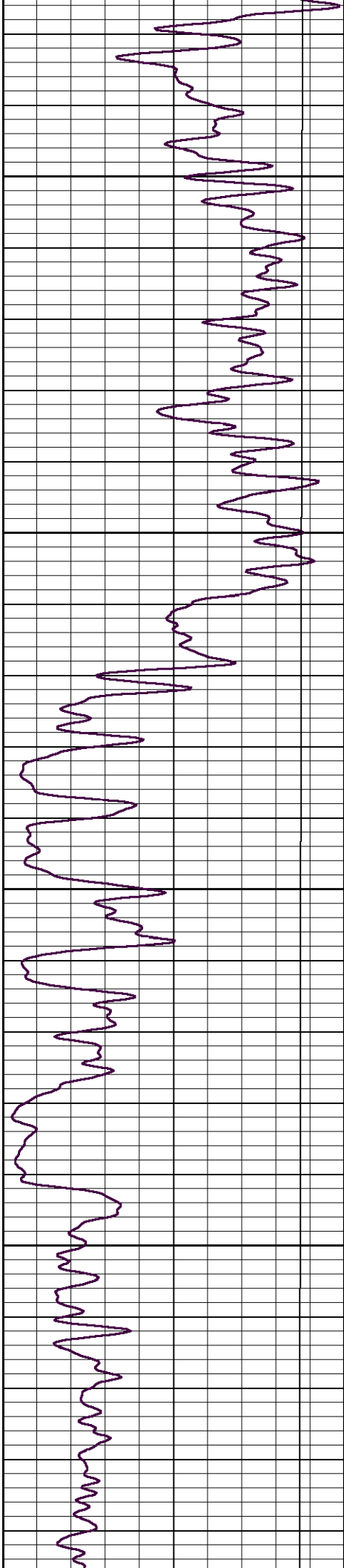


DV Tool @ 2365

Database File: lario_colburntuck_#1-18.db
 Dataset Pathname: pass6
 Presentation Format: cbldr
 Dataset Creation: Mon Dec 17 15:51:38 2012 by Log SCH 111116
 Charted by: Depth in Feet scaled 1:240

0	Gamma Ray	150	amp3ft	4	Casing Collars	-0.6	200	wvf5ft	1200
			(mV)	0	Amplified Amplitude (mV)	100			
			-100 10	0	Pipe Amplitude (mV)	20			



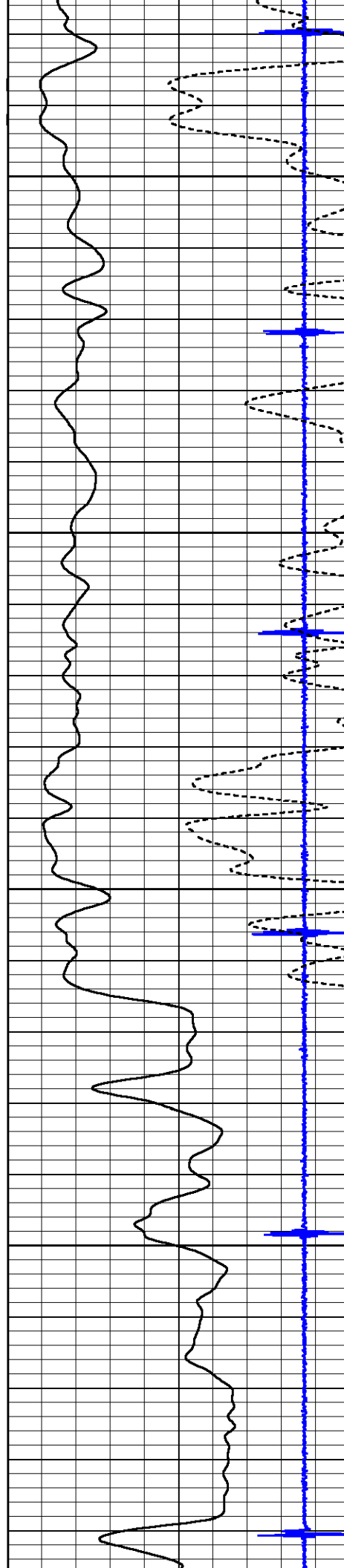


1500

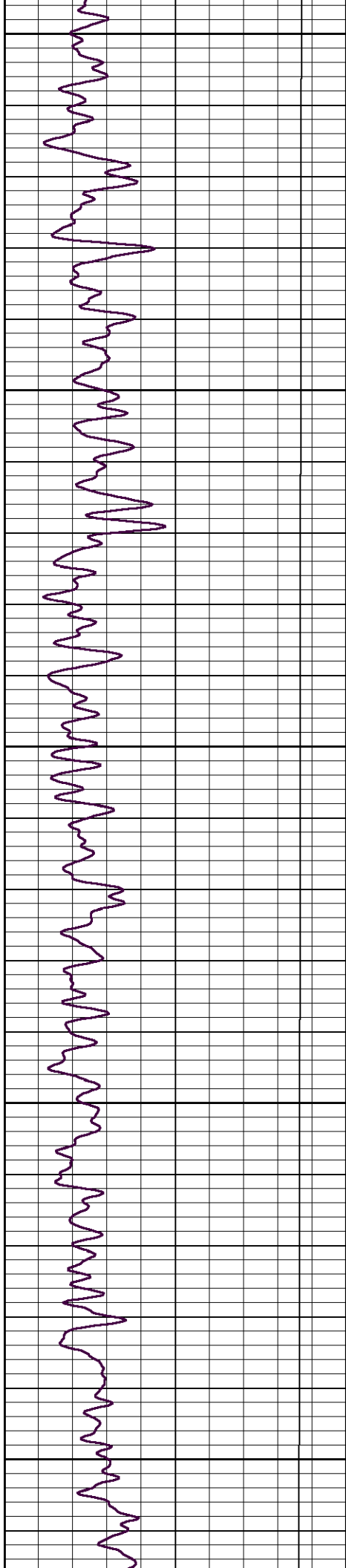
1550

1600

1650



Small vertical text on the right side of the page, possibly a page number or reference code.



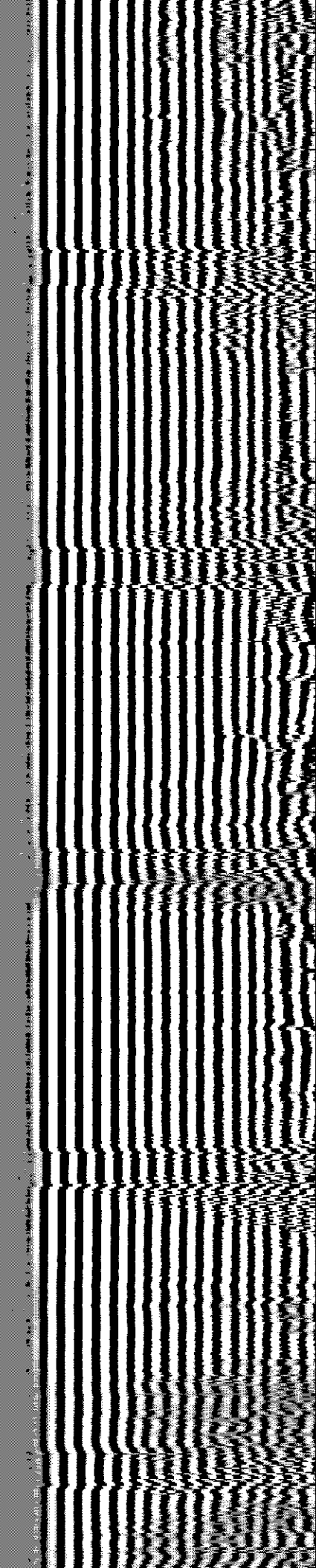
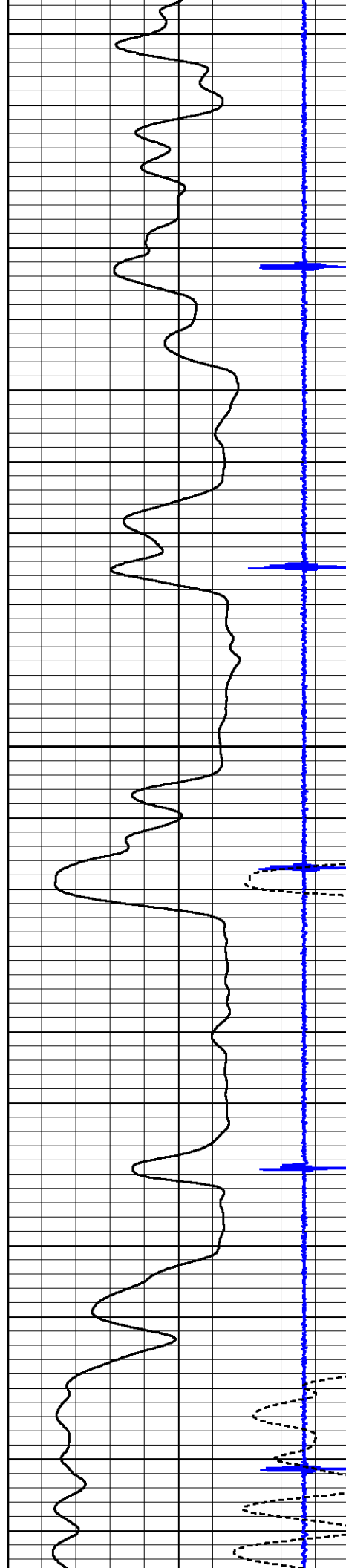
1700

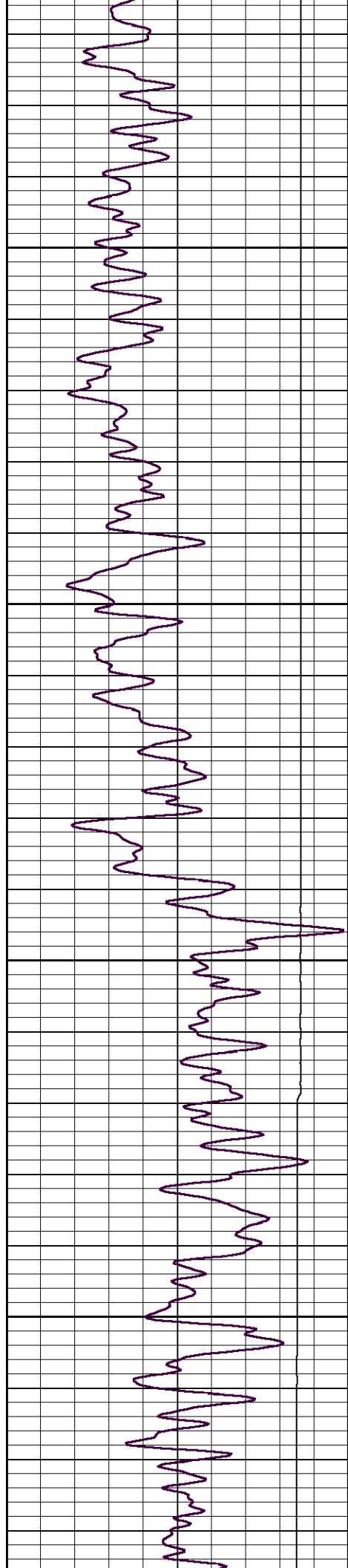
1750

1800

1850

1900



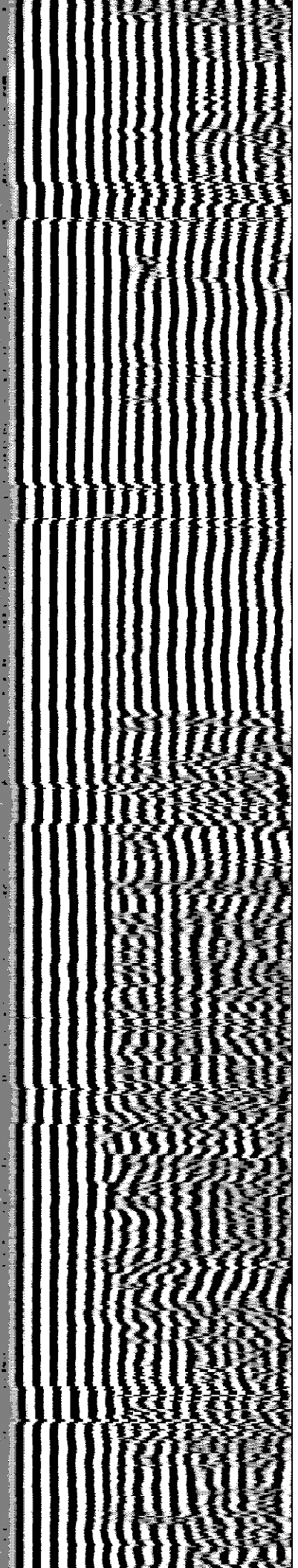
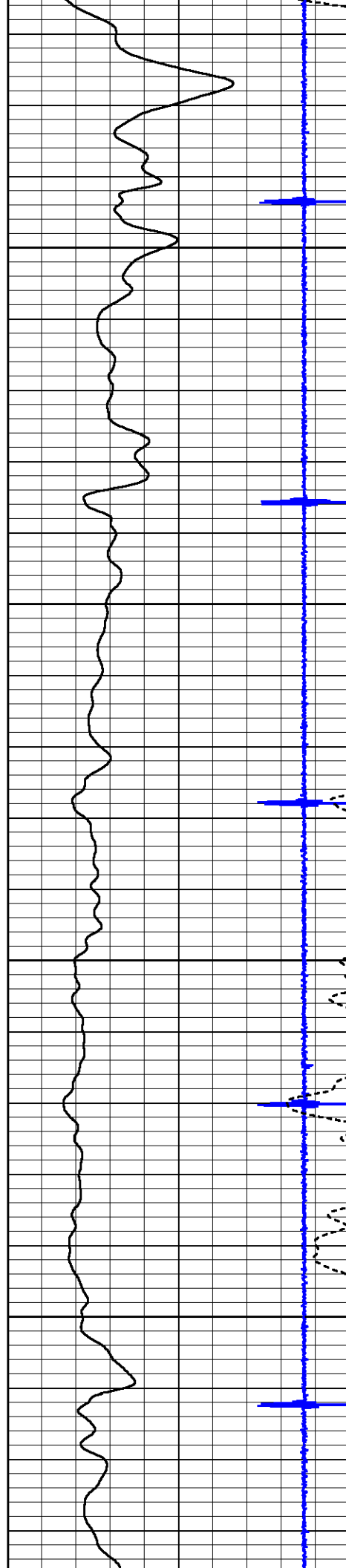


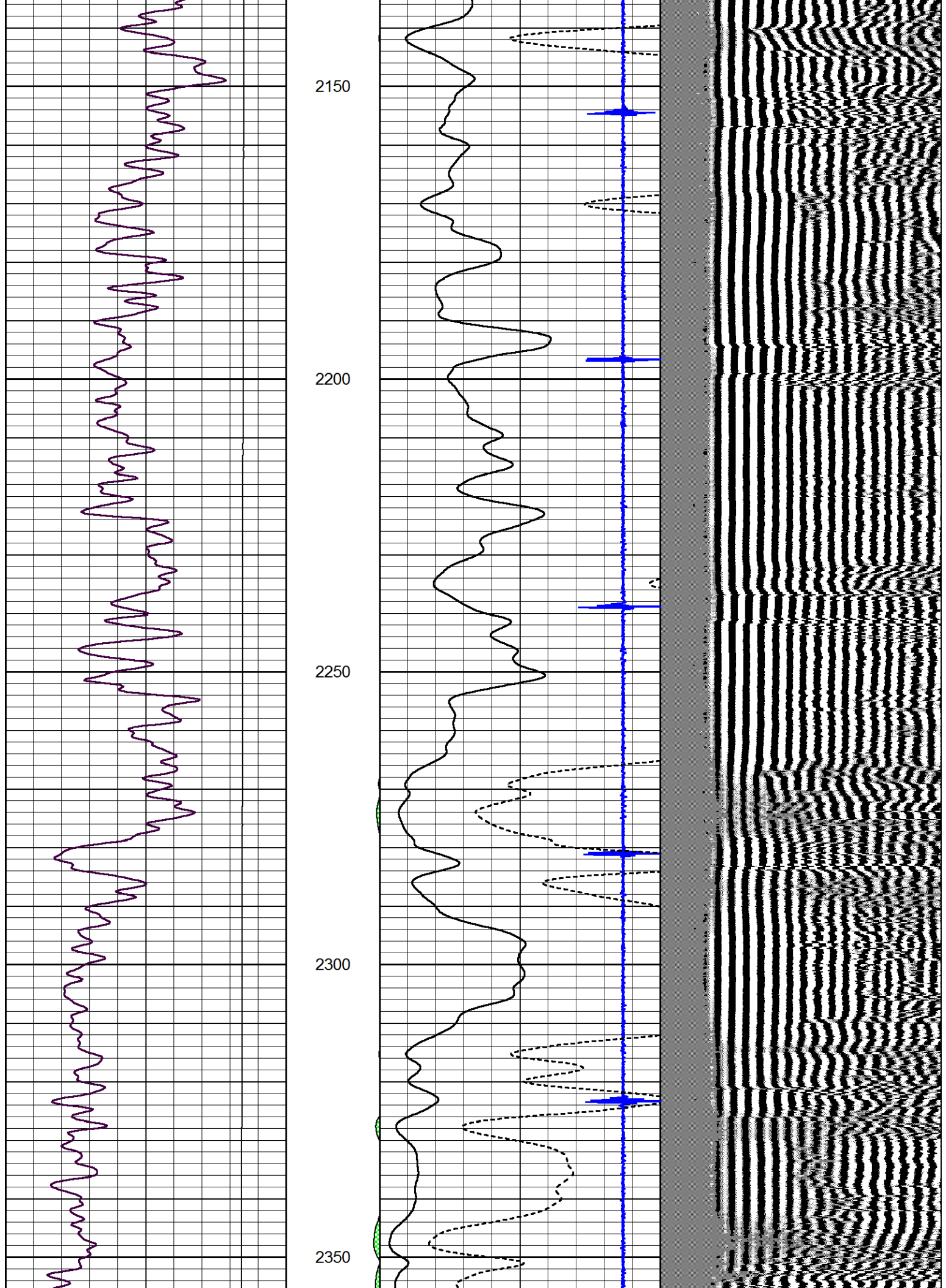
1950

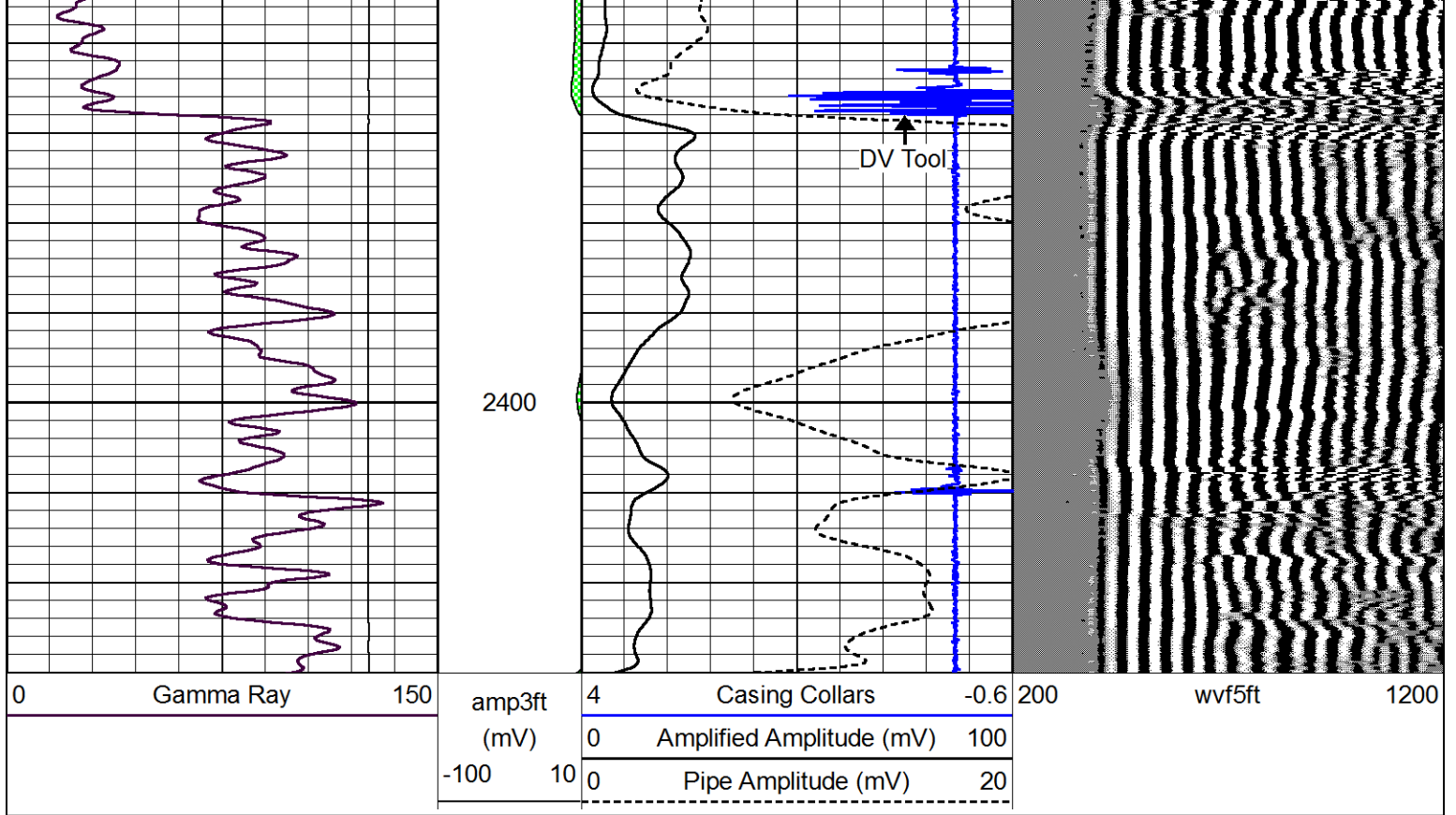
2000

2050

2100

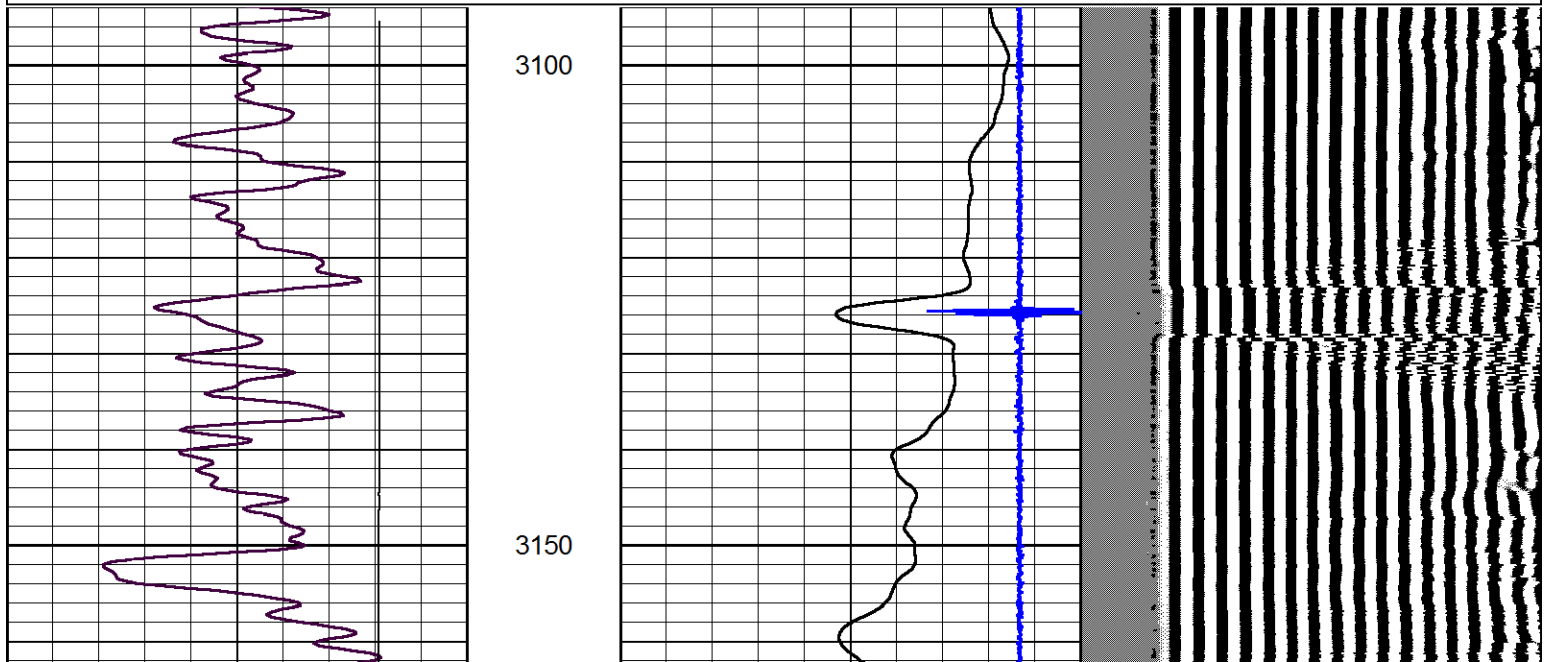
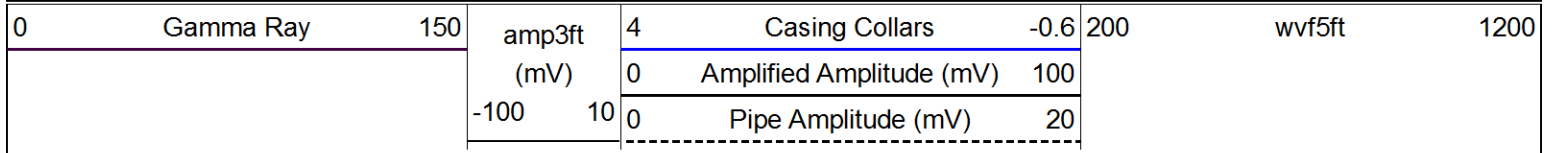


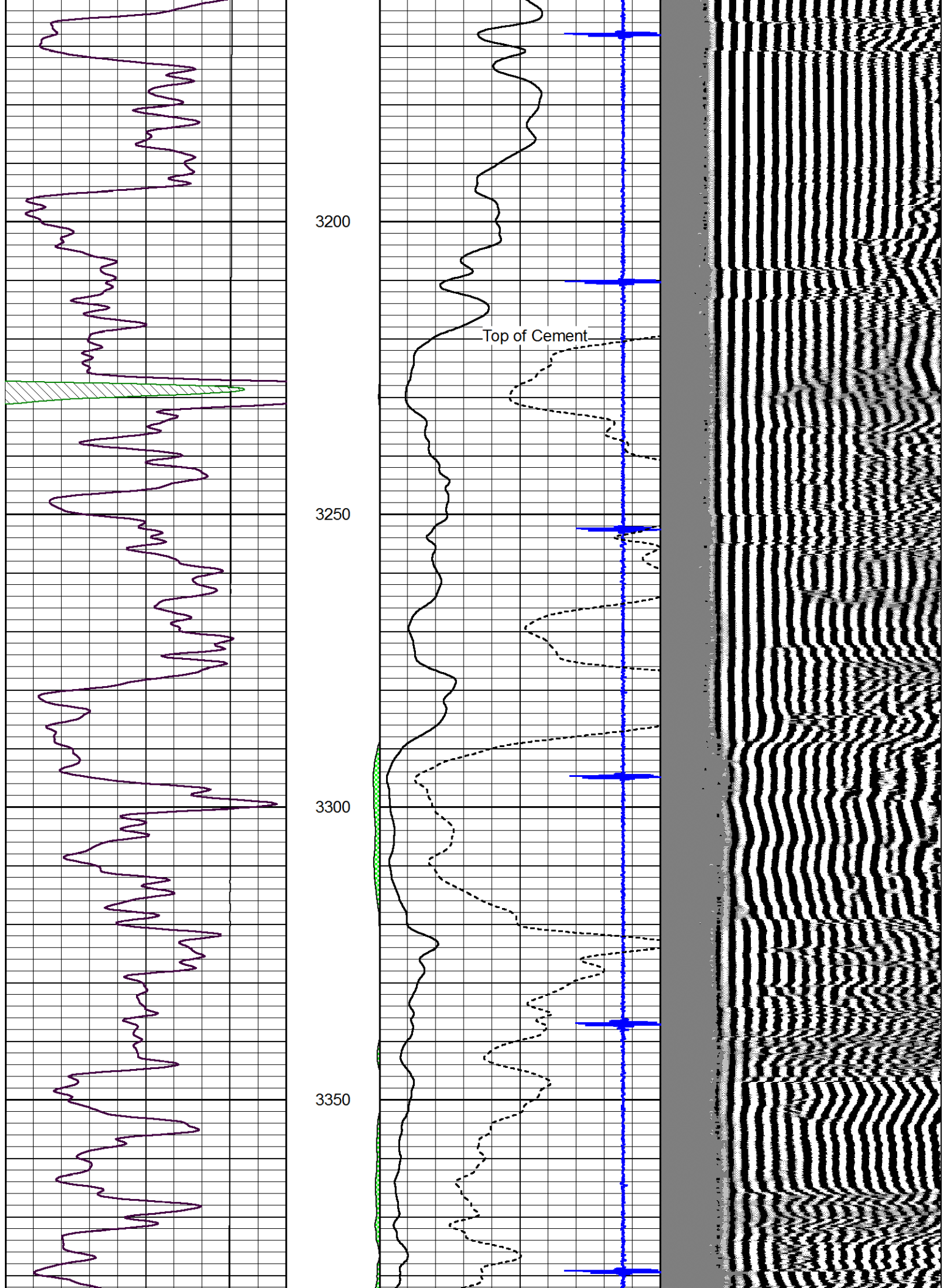


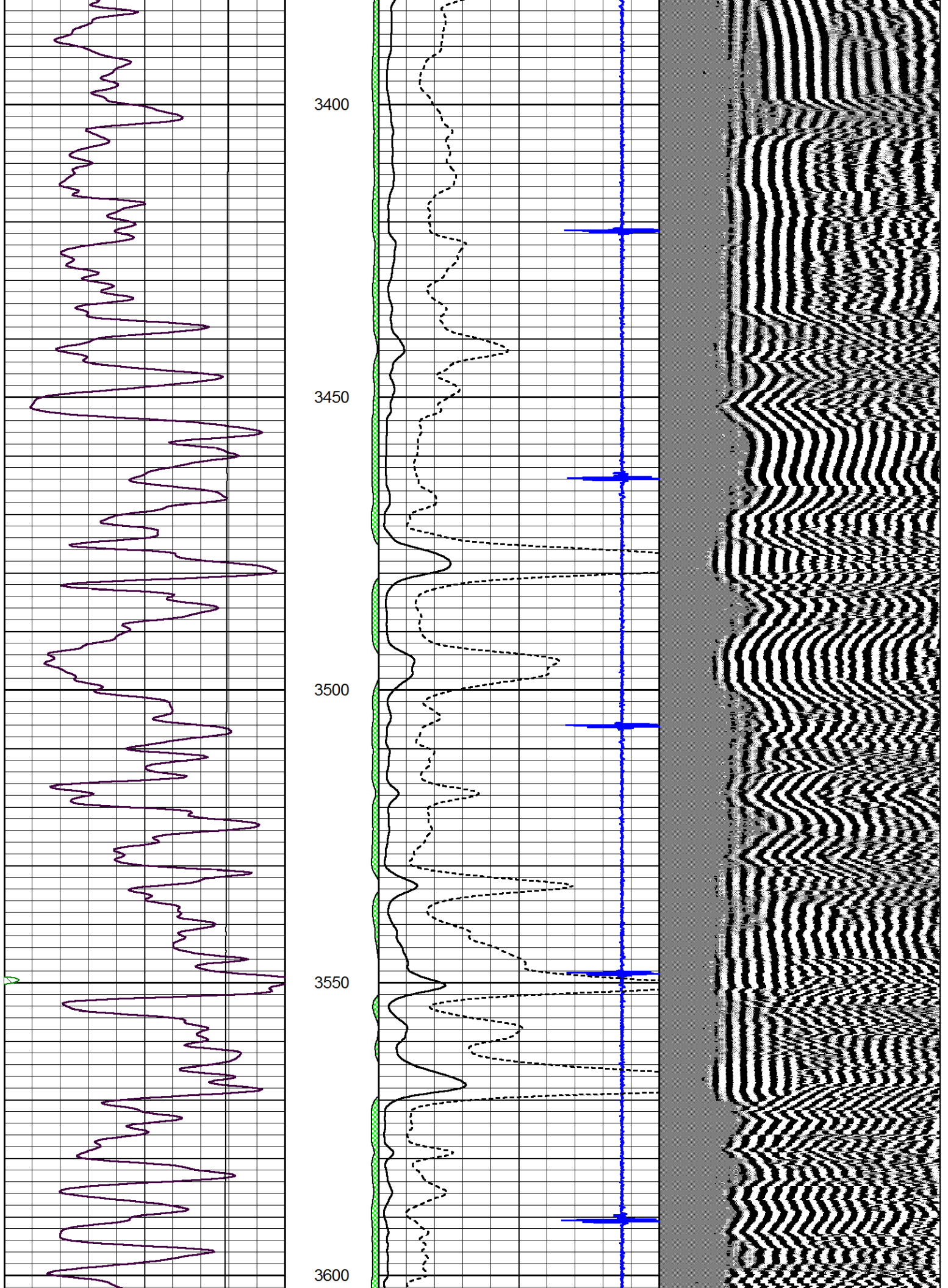


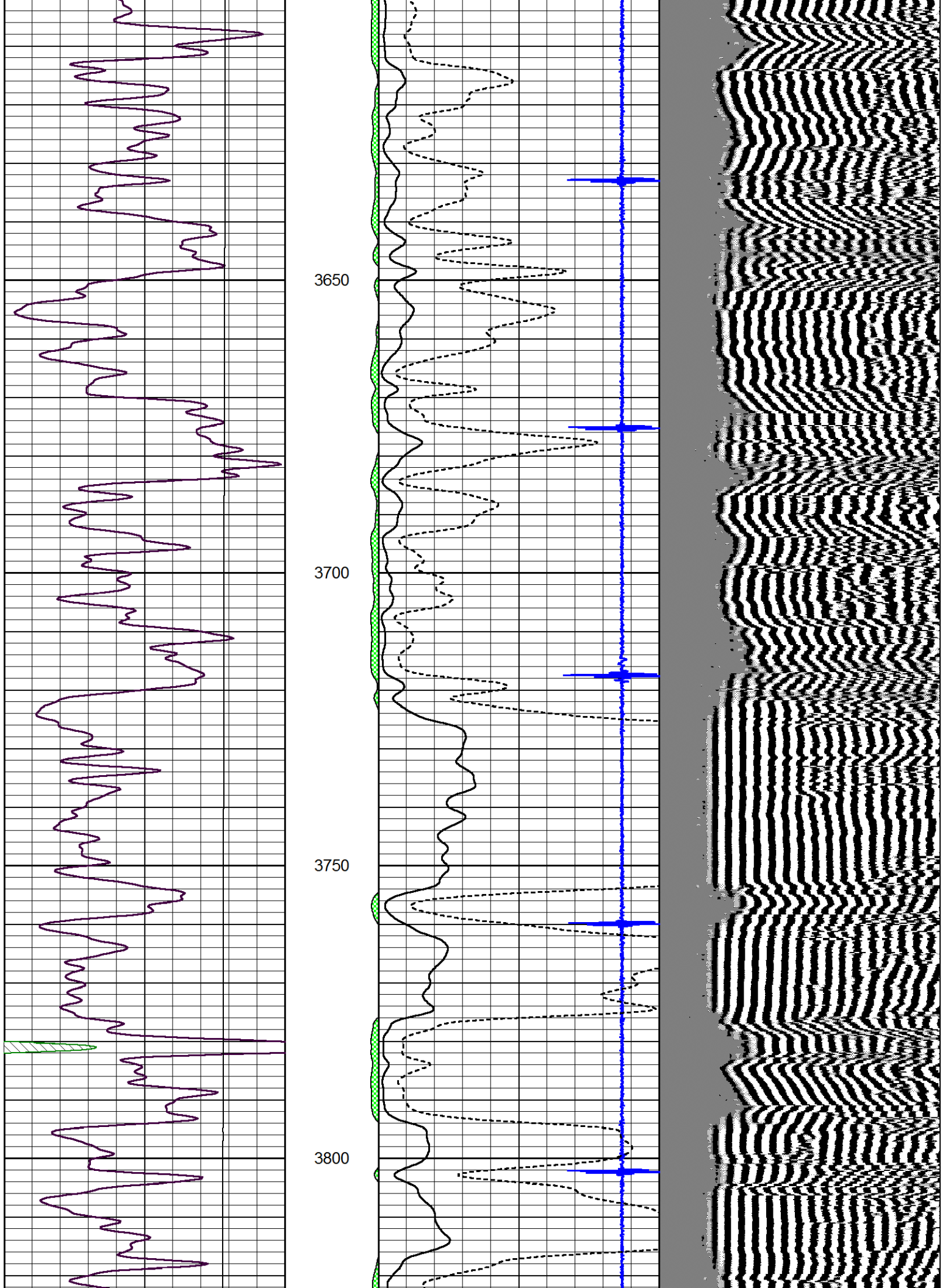
Main Pass

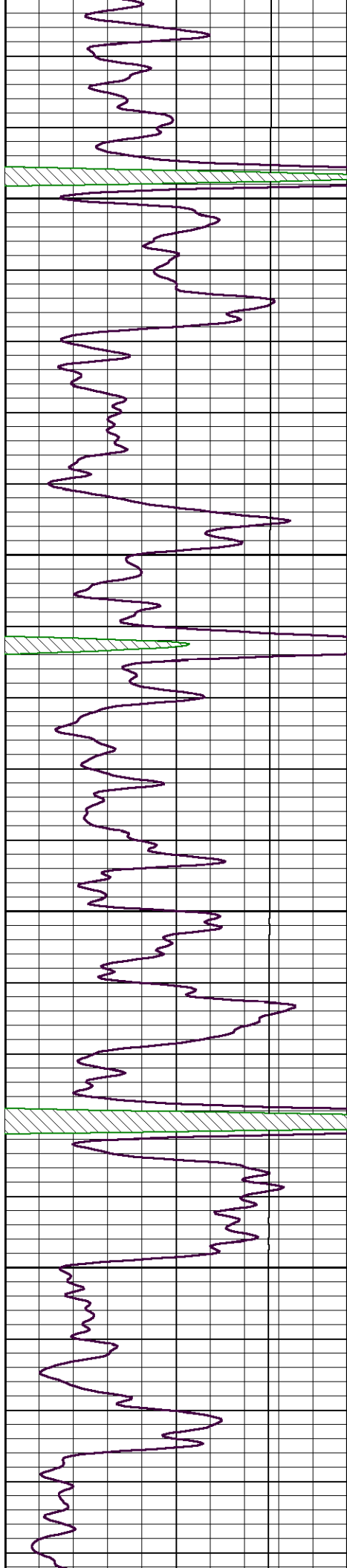
Database File: lario_colburntuck_#1-18.db
 Dataset Pathname: pass5.1
 Presentation Format: cbldr
 Dataset Creation: Mon Dec 17 16:17:00 2012 by Calc SCH 111116
 Charted by: Depth in Feet scaled 1:240









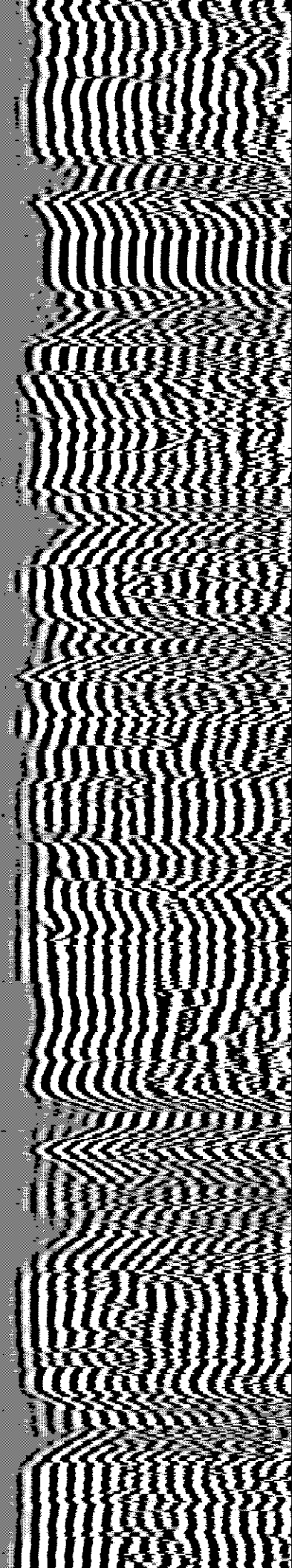
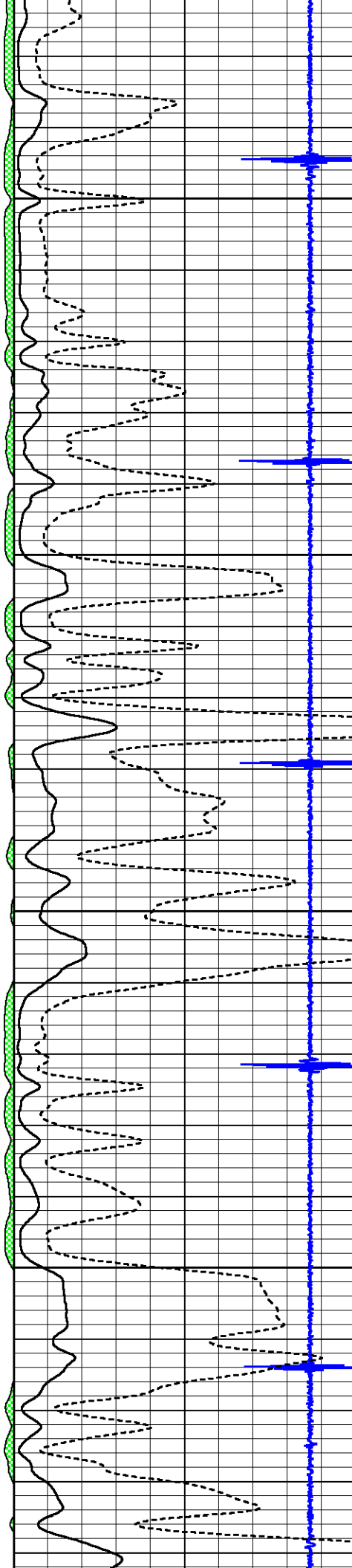


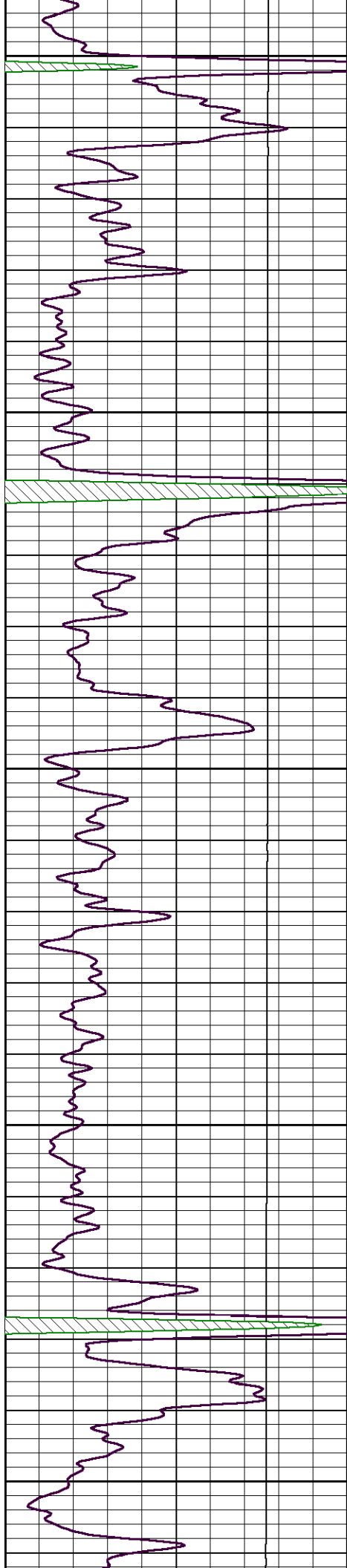
3850

3900

3950

4000





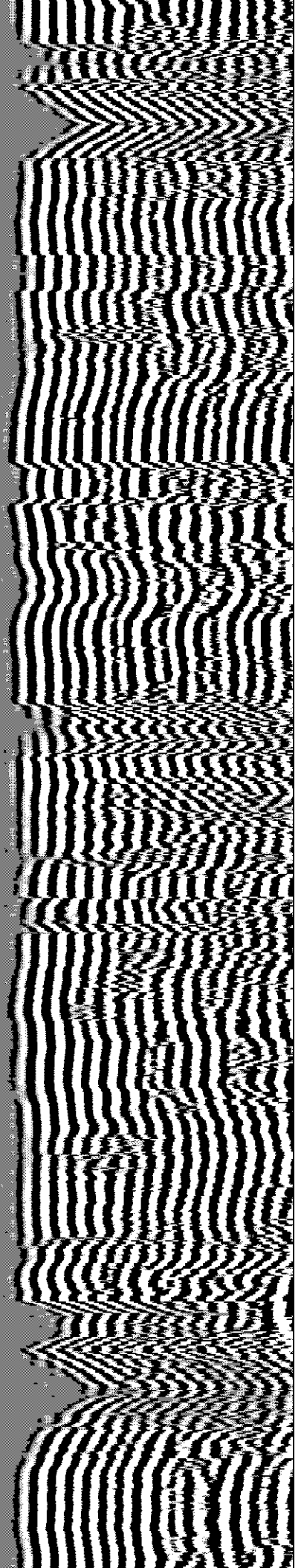
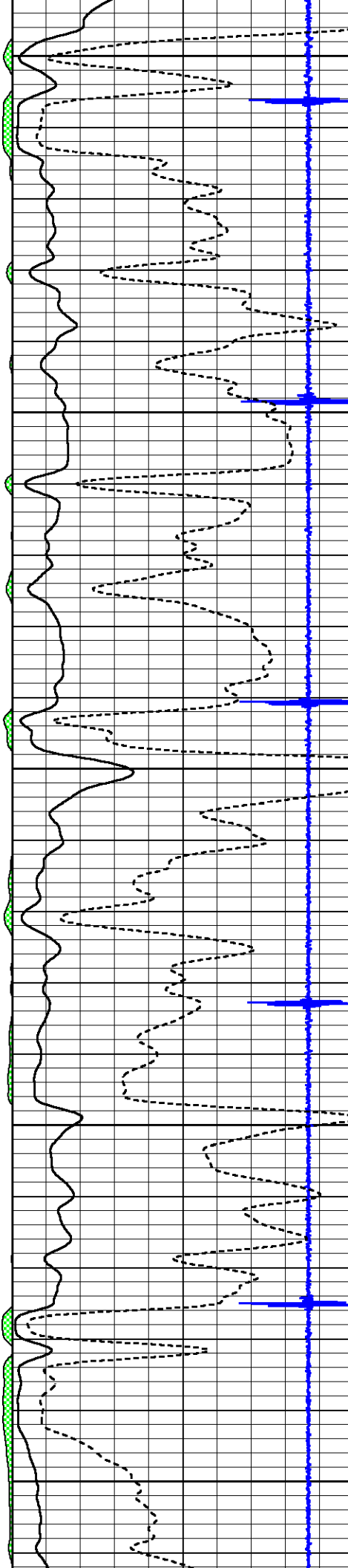
4050

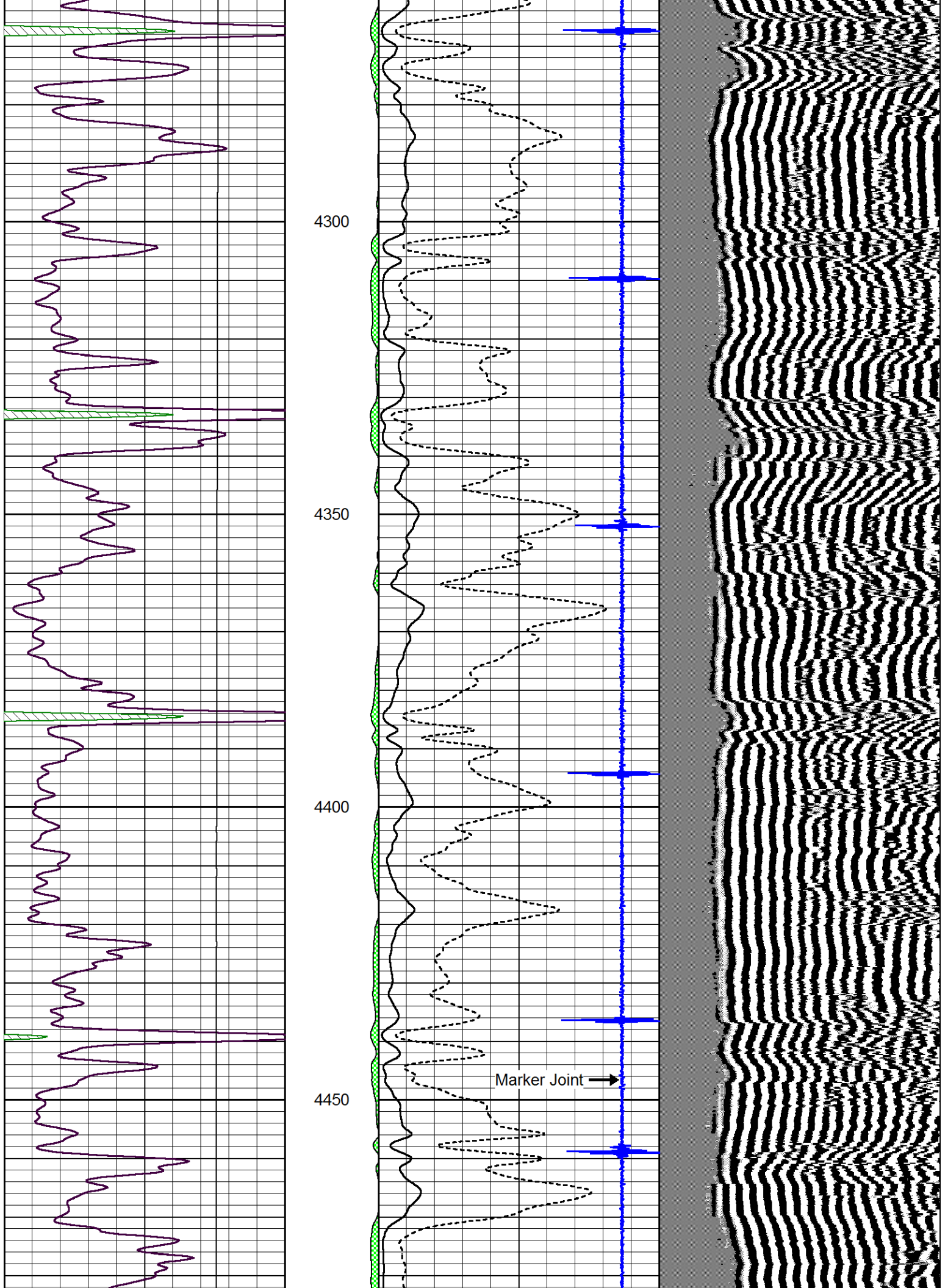
4100

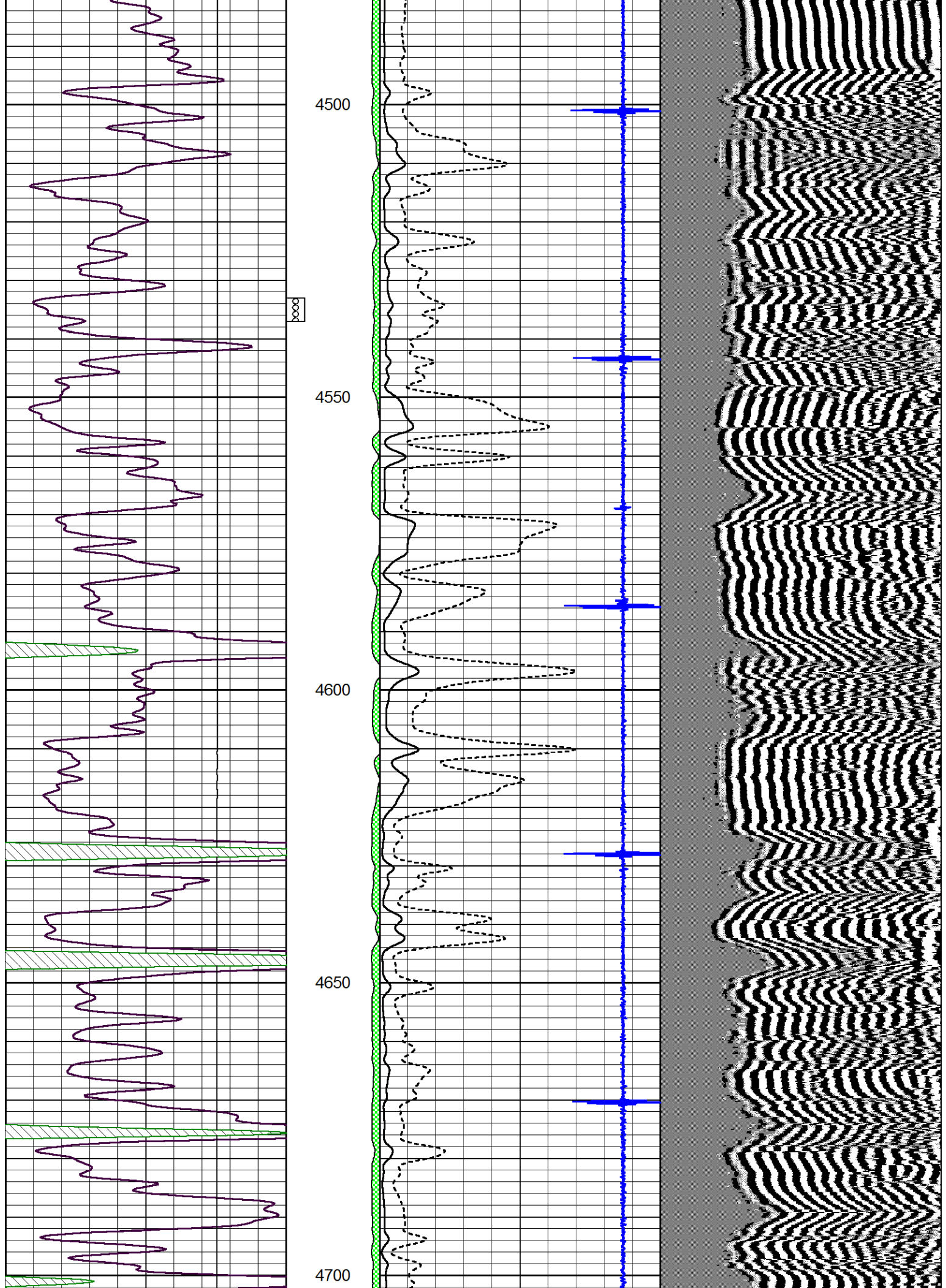
4150

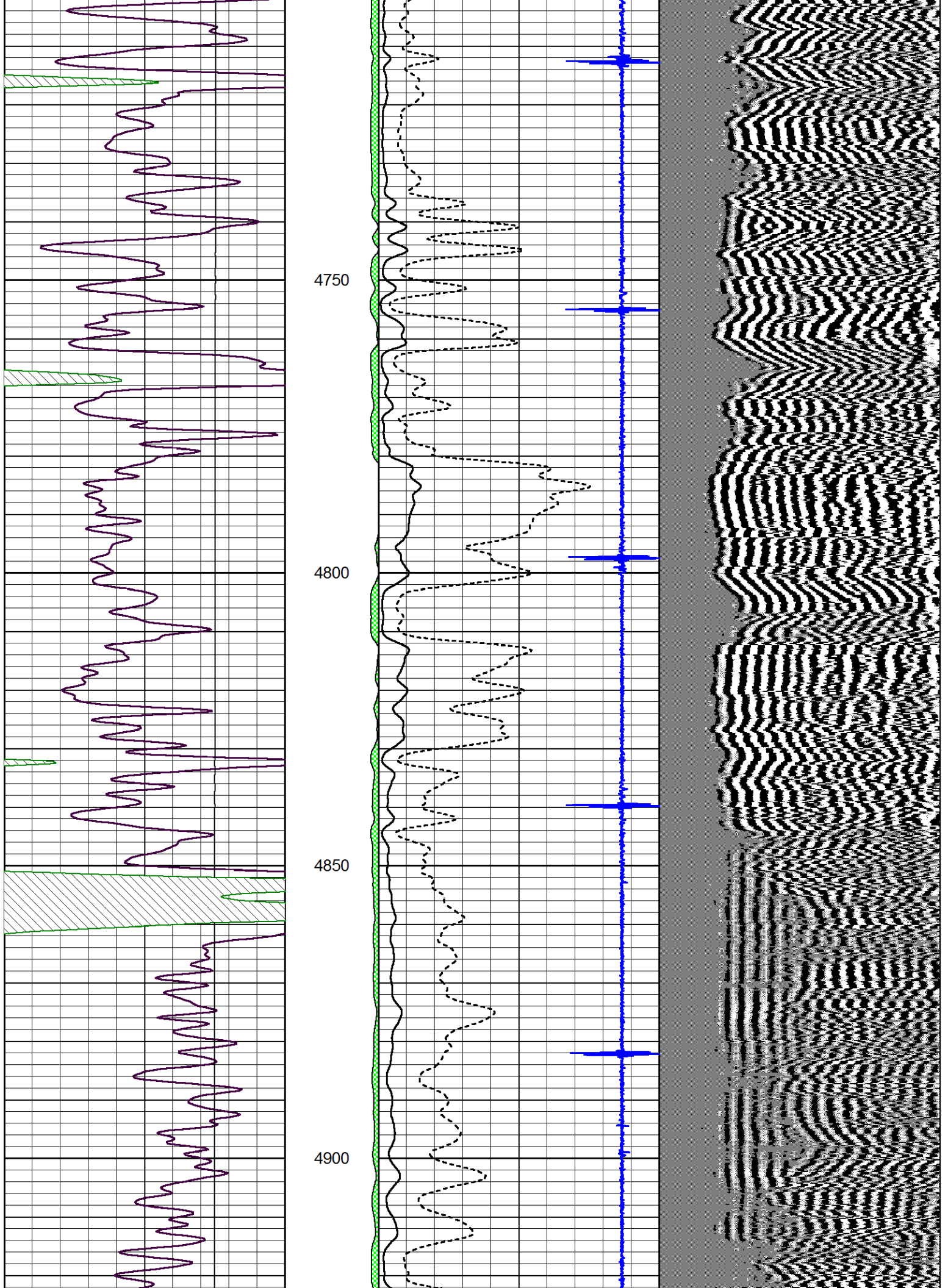
4200

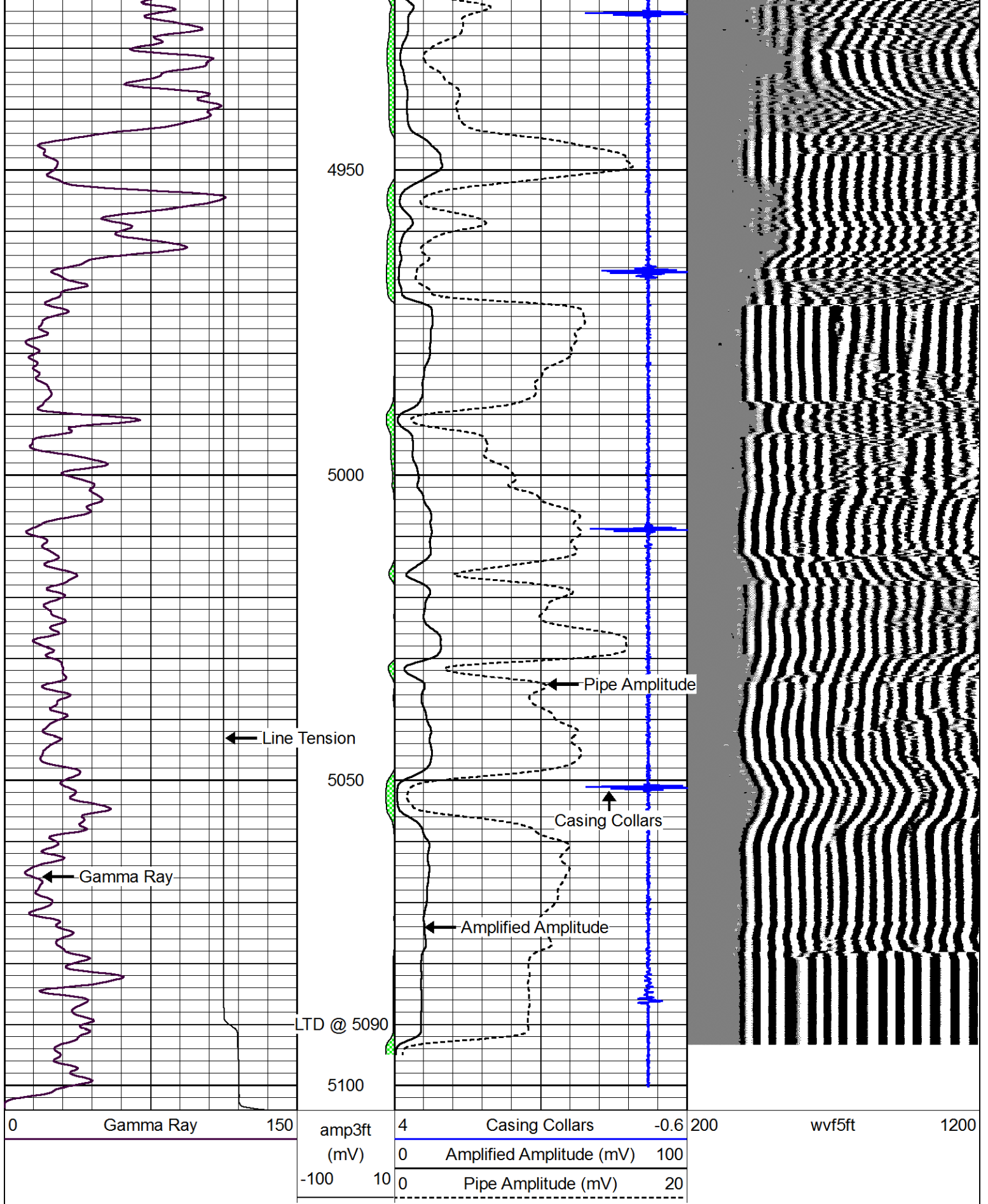
4250





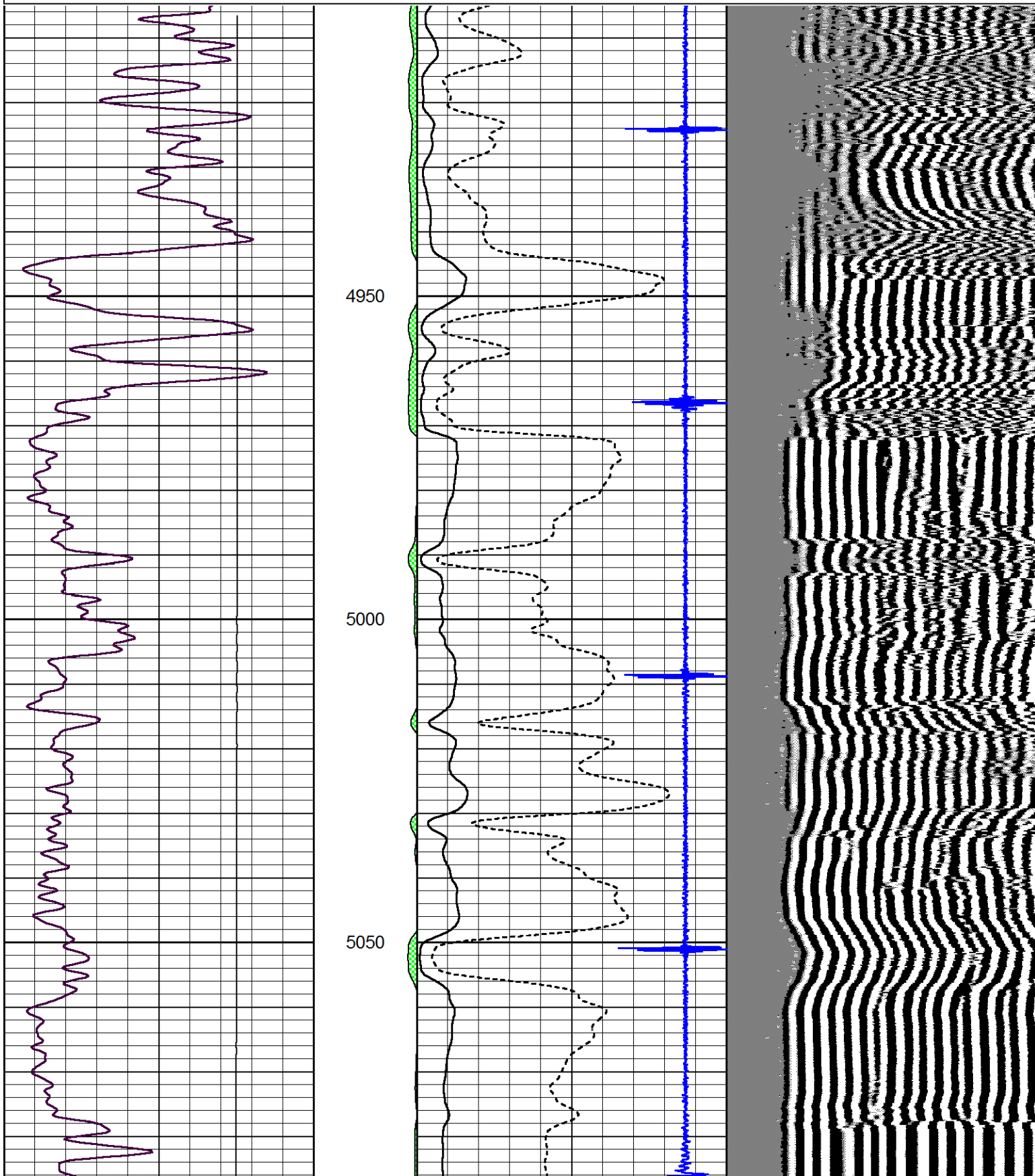


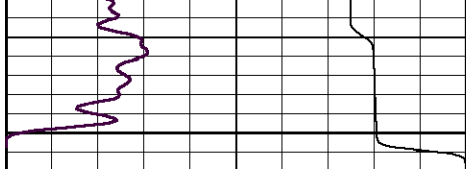




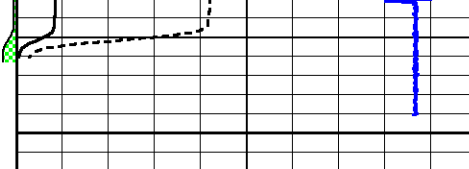
Database File: lario_colburntuck_#1-18.db
Dataset Pathname: pass4
Presentation Format: cbldr
Dataset Creation: Mon Dec 17 15:11:57 2012 by Log SCH 111116
Charted by: Depth in Feet scaled 1:240

0	Gamma Ray	150	amp3ft	4	Casing Collars	-0.6	200	wvf5ft	1200
			(mV)	0	Amplified Amplitude (mV)	100			
			-100 10	0	Pipe Amplitude (mV)	20			





5100



0 Gamma Ray 150

amp3ft 4 Casing Collars -0.6

200 wvf5ft 1200

-100 10

0 Amplified Amplitude (mV) 100
 0 Pipe Amplitude (mV) 20