



**COMPLETION
& PRODUCTION
SERVICES CO.**

**MICRO
LOG**

Company	MAI OIL OPERATIONS, INC.	Company	MAI OIL OPERATIONS, INC.
Well	SCHMITT #5	Well	SCHMITT #5
Field	KENNEBEC	Field	KENNEBEC
County	RUSSELL	County	RUSSELL
State	KANSAS	State	KANSAS
Location:	API # : 15-167-23837-0000	Other Services	CDL/CNL DIL
Permanent Datum	GROUND LEVEL	Elevation	1770
Log Measured From	KELLY BUSHING 8' A.G.L.	K.B.	1778
Drilling Measured From	KELLY BUSHING	D.F.	1776
	SEC 4 TWP 15S RGE 14W	G.L.	1770

Date	11/19/12
Run Number	TWO
Depth Driller	3300
Depth Logger	3298
Bottom Logged Interval	3296
Top Log Interval	2200
Casing Driller	8 5/8" @ 473'
Casing Logger	473
Bit Size	7 7/8"
Type Fluid in Hole	CHEMICAL MUD
Density / Viscosity	9.6/54
pH / Fluid Loss	11.0/10.0
Source of Sample	FLOWLINE
Rim @ Meas. Temp	.600 @ 82F
Rmf @ Meas. Temp	.450 @ 82F
Rmc @ Meas. Temp	.720 @ 82F
Source of Rmf / Rmc	MEASUREMENT
Rim @ BHT	.447 @ 110F
Time Circulation Stopped	3.5 HOURS
Time Logger on Bottom	10:15 A.M.
Maximum Recorded Temperature	110F
Equipment Number	4854
Location	HAYS, KANSAS
Recorded By	JEFF LUEBBERS
Witnessed By	JIM MUSGROVE

<<< Fold Here >>>

All interpretations are opinions based on inferences from electrical or other measurements and we cannot and do not guarantee the accuracy or correctness of any interpretation, and we shall not, except in the case of gross or willful negligence on our part, be liable or responsible for any loss, costs, damages, or expenses incurred or sustained by anyone resulting from any interpretation made by any of our officers, agents or employees. These interpretations are also subject to our general terms and conditions set out in our current Price Schedule.

Comments

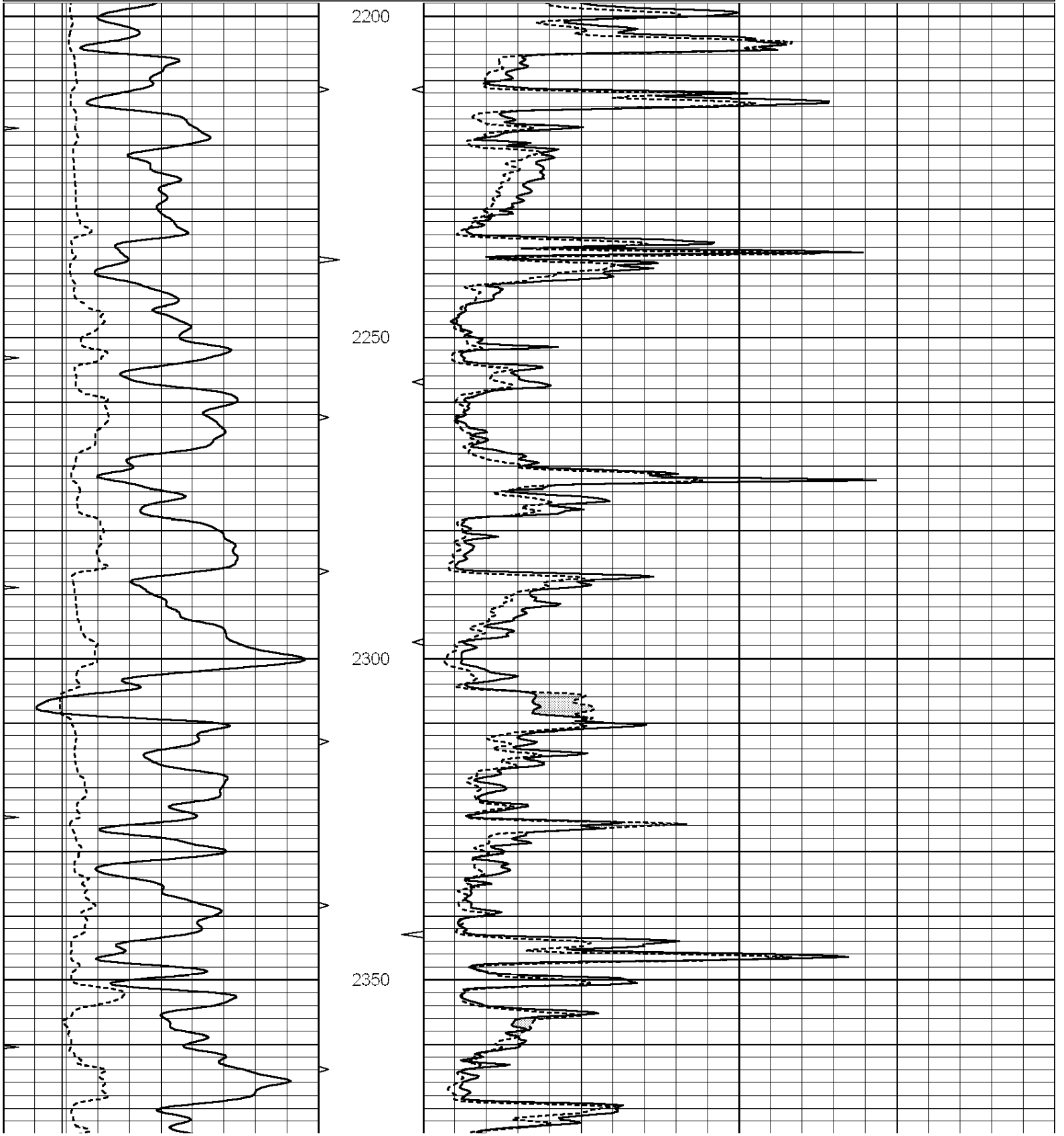
RUSSELL, KS. & I-70, 6S. ON HWY 281 TO "WALTERS RD." (JUST S. OF RIVER BRIDGE), 1W., 1/2S., 1/2W., N. INTO

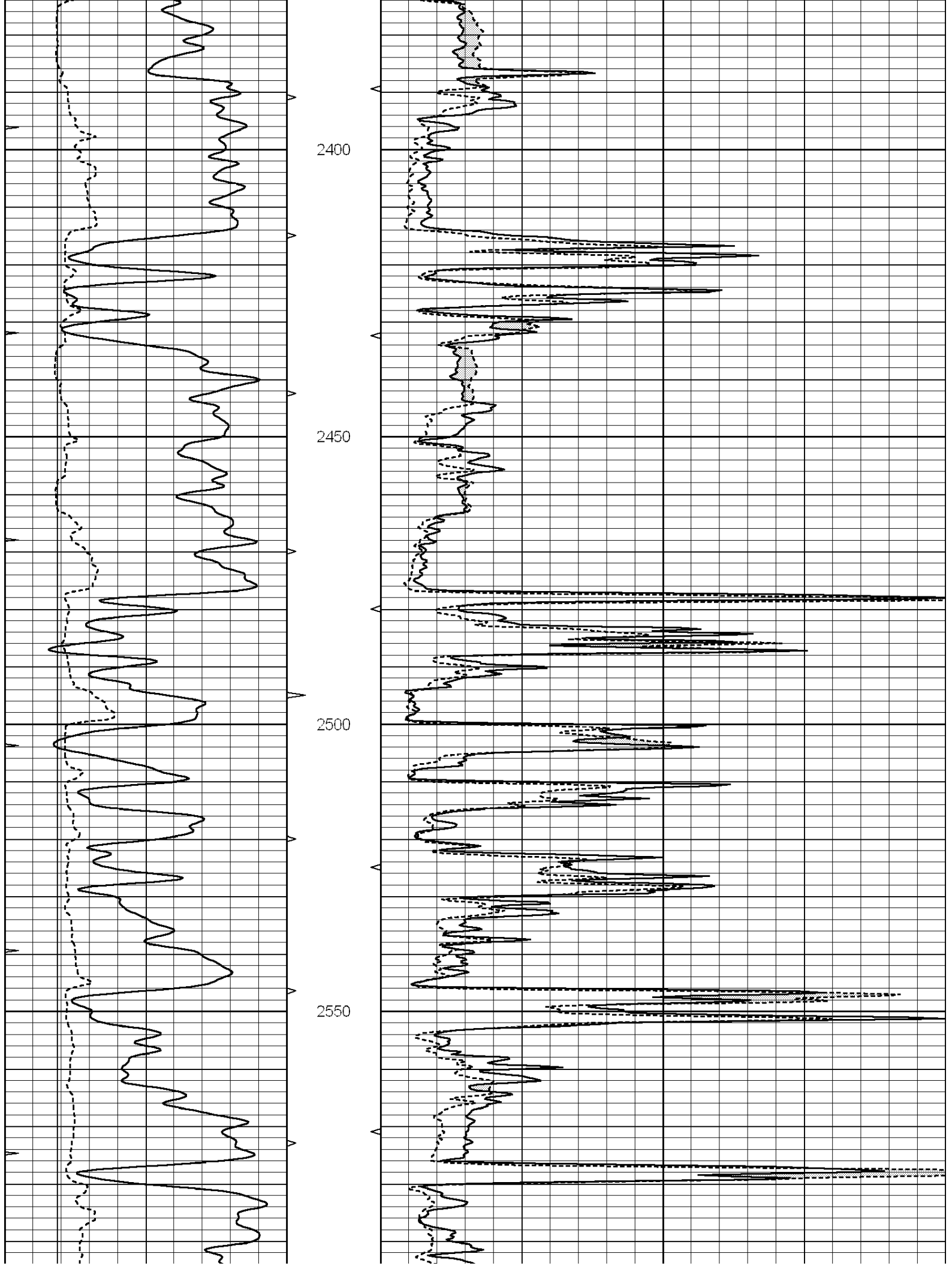


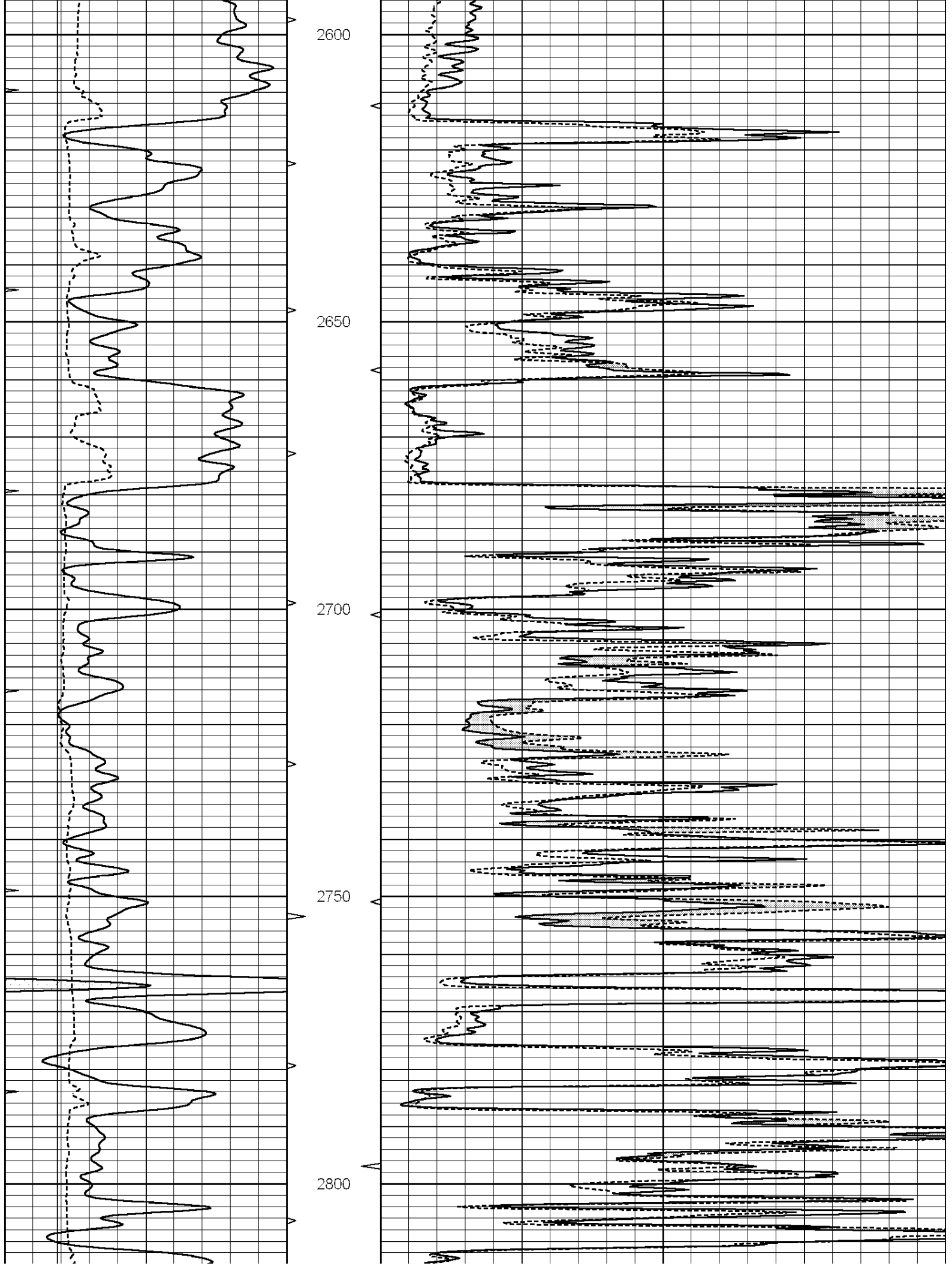
MAIN SECTION

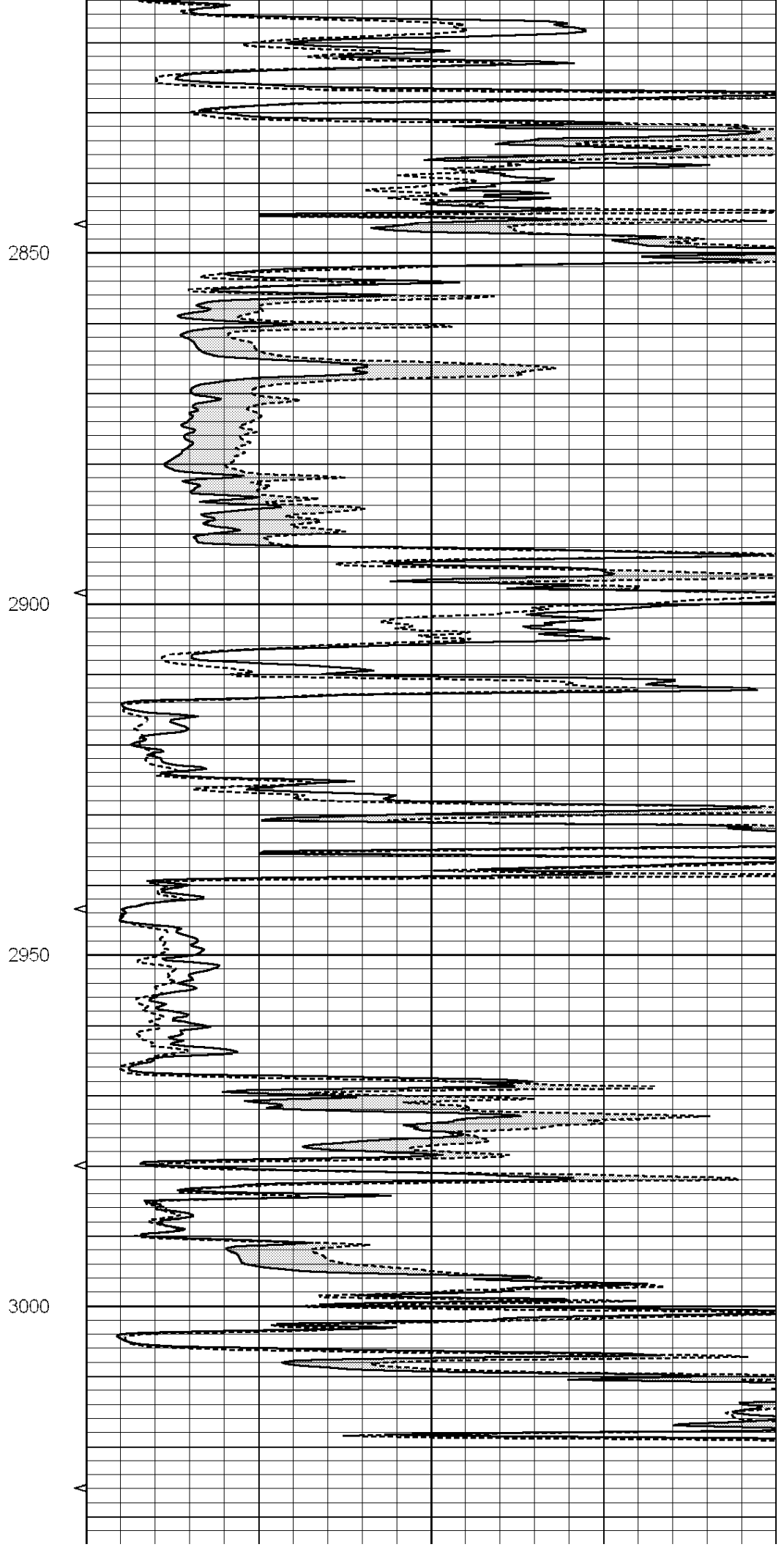
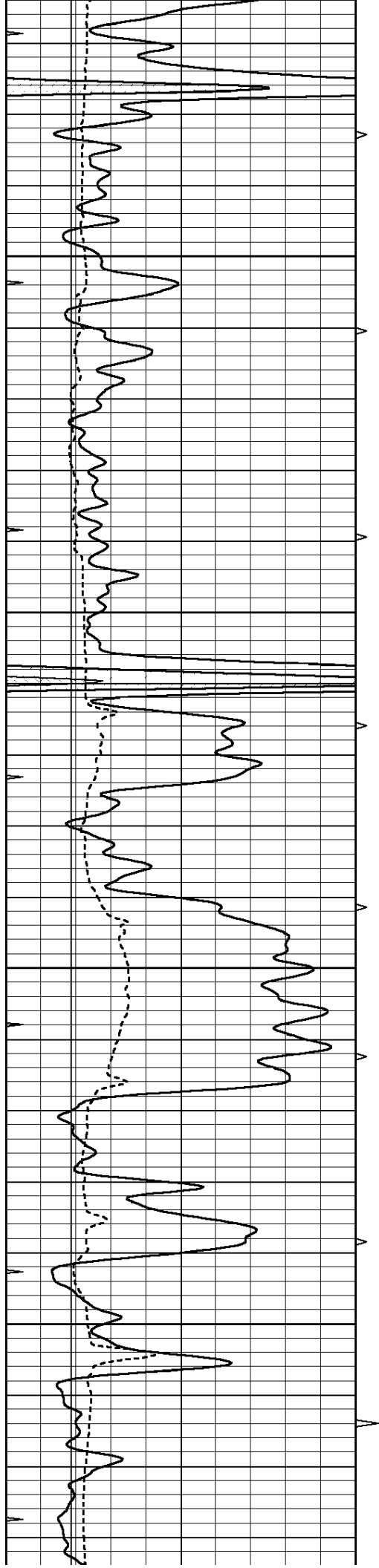
Database File: 010017ddn.db
 Dataset Pathname: pass6.3
 Presentation Format: micro
 Dataset Creation: Mon Nov 19 13:01:12 2012 by Calc SOC 120430
 Charted by: Depth in Feet scaled 1:240

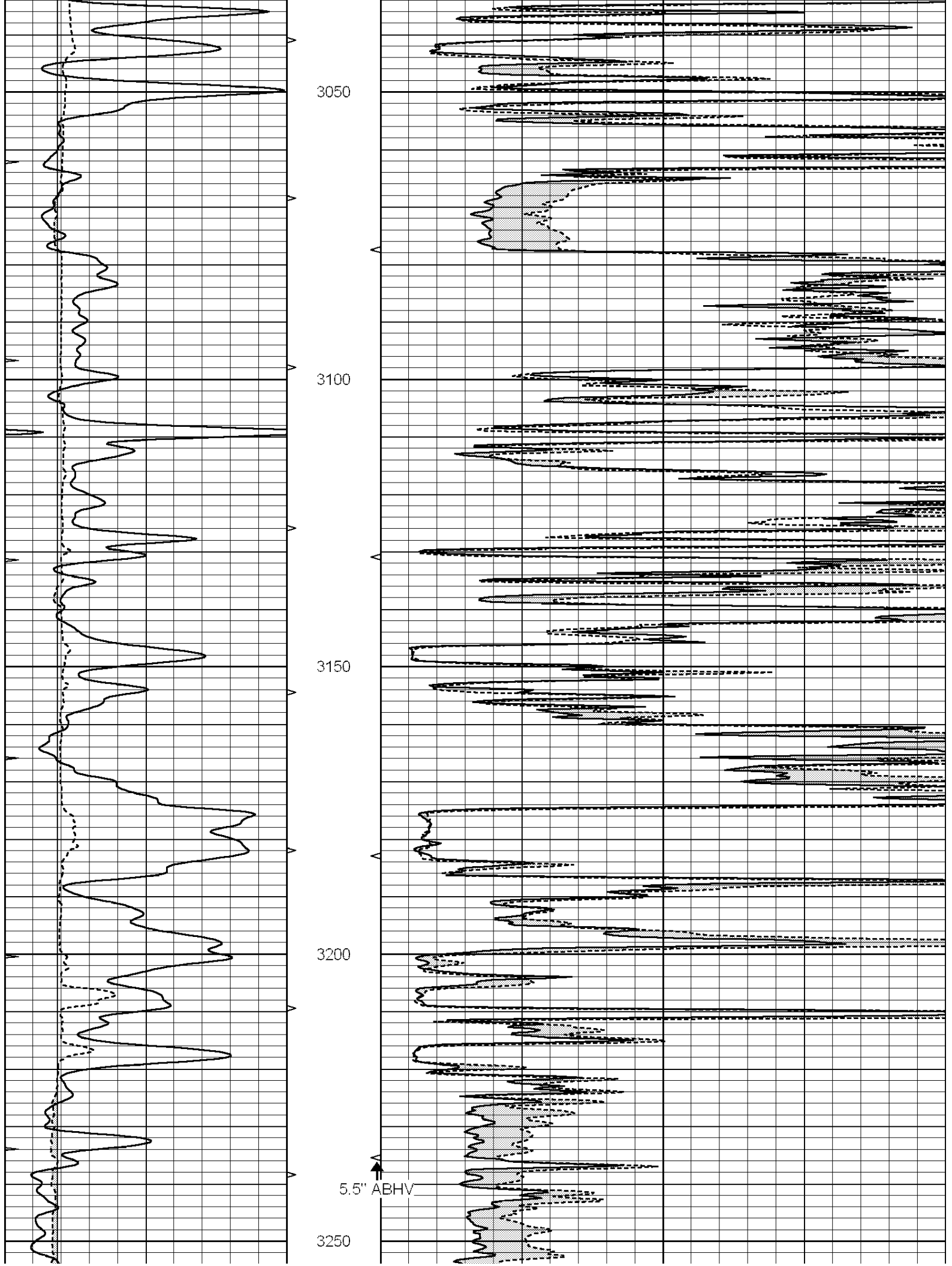
0	GAMMA RAY (GAPI)	150	ABHV	0	MEL1.5 (Ohm-m)	40
6	CALIPER (in)	16	10 (ft3)	0	MEL2.0 (Ohm-m)	40
0	MINMK	20	TBHV			
			0 (ft3)	10		

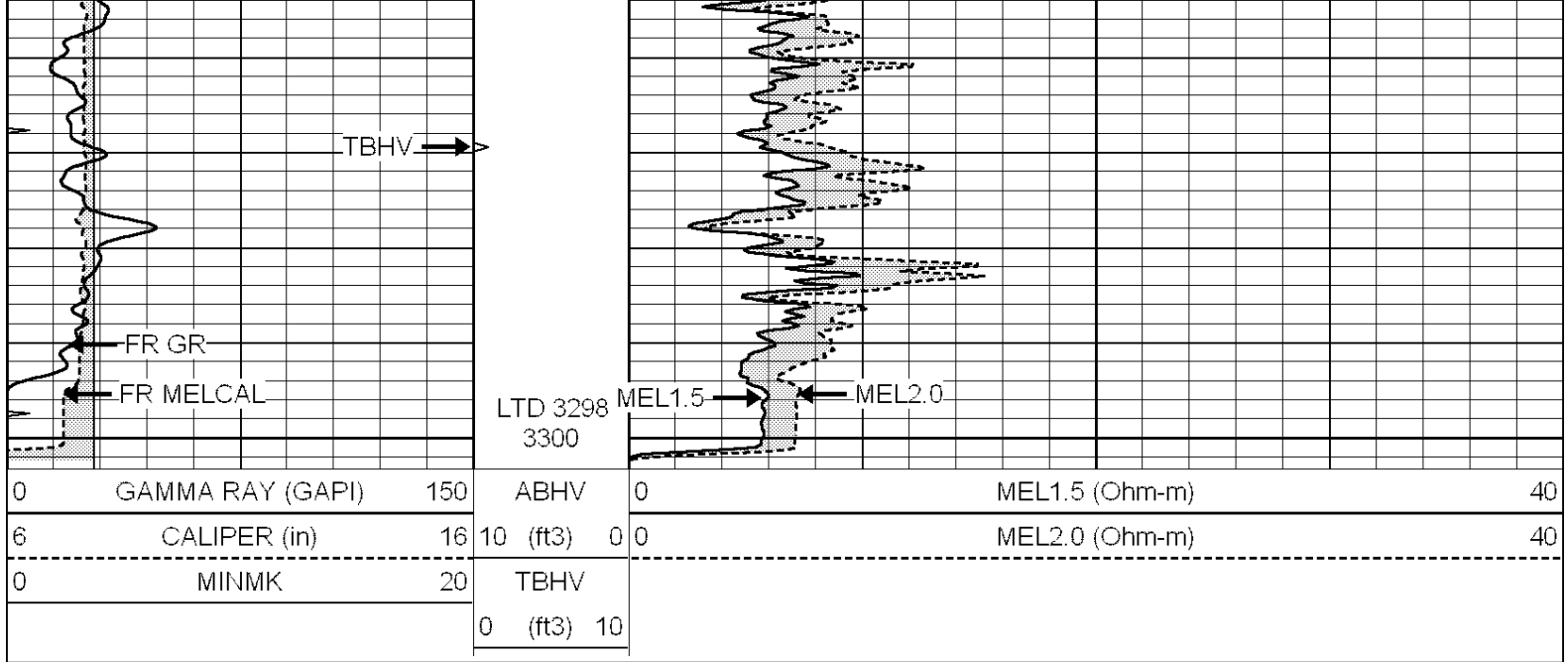










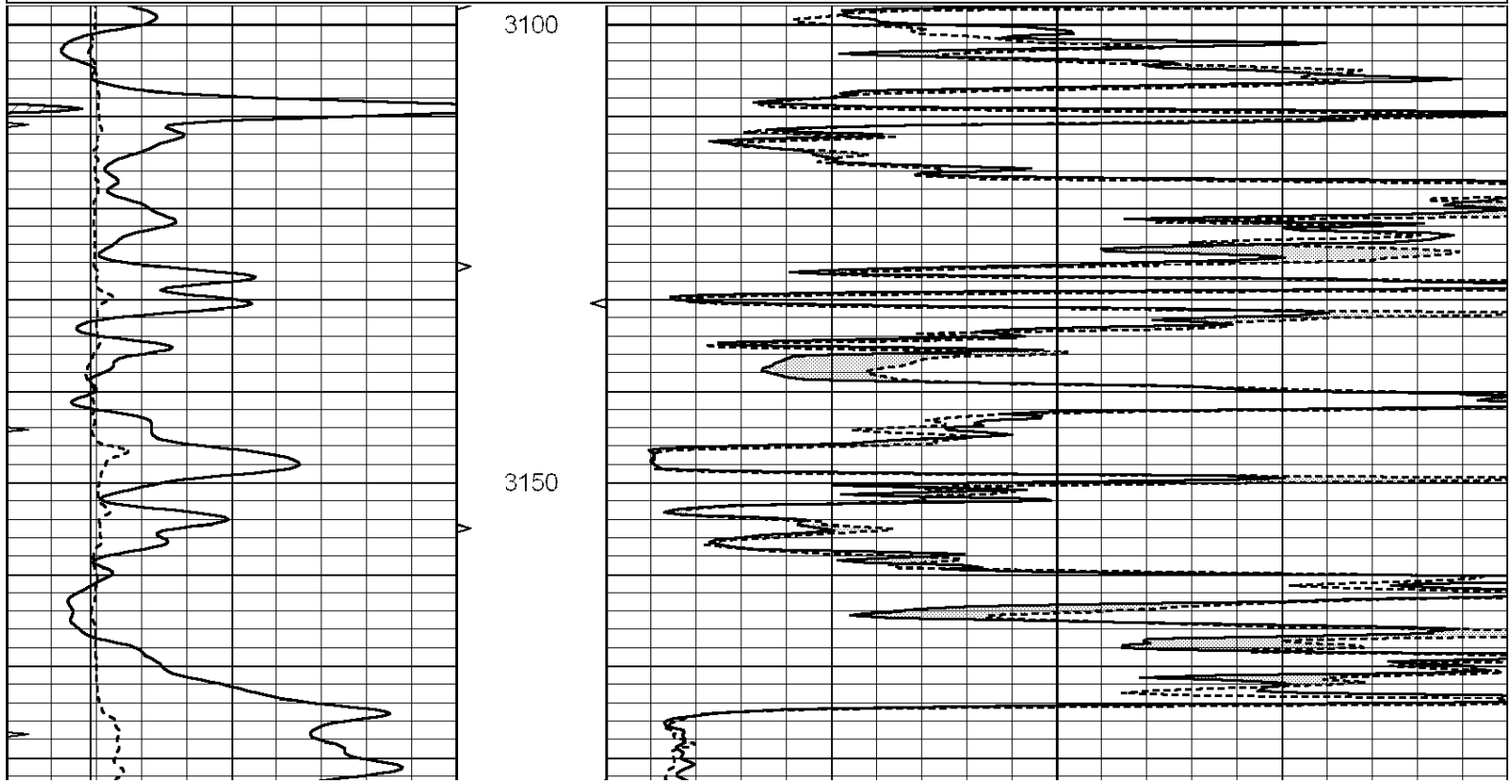


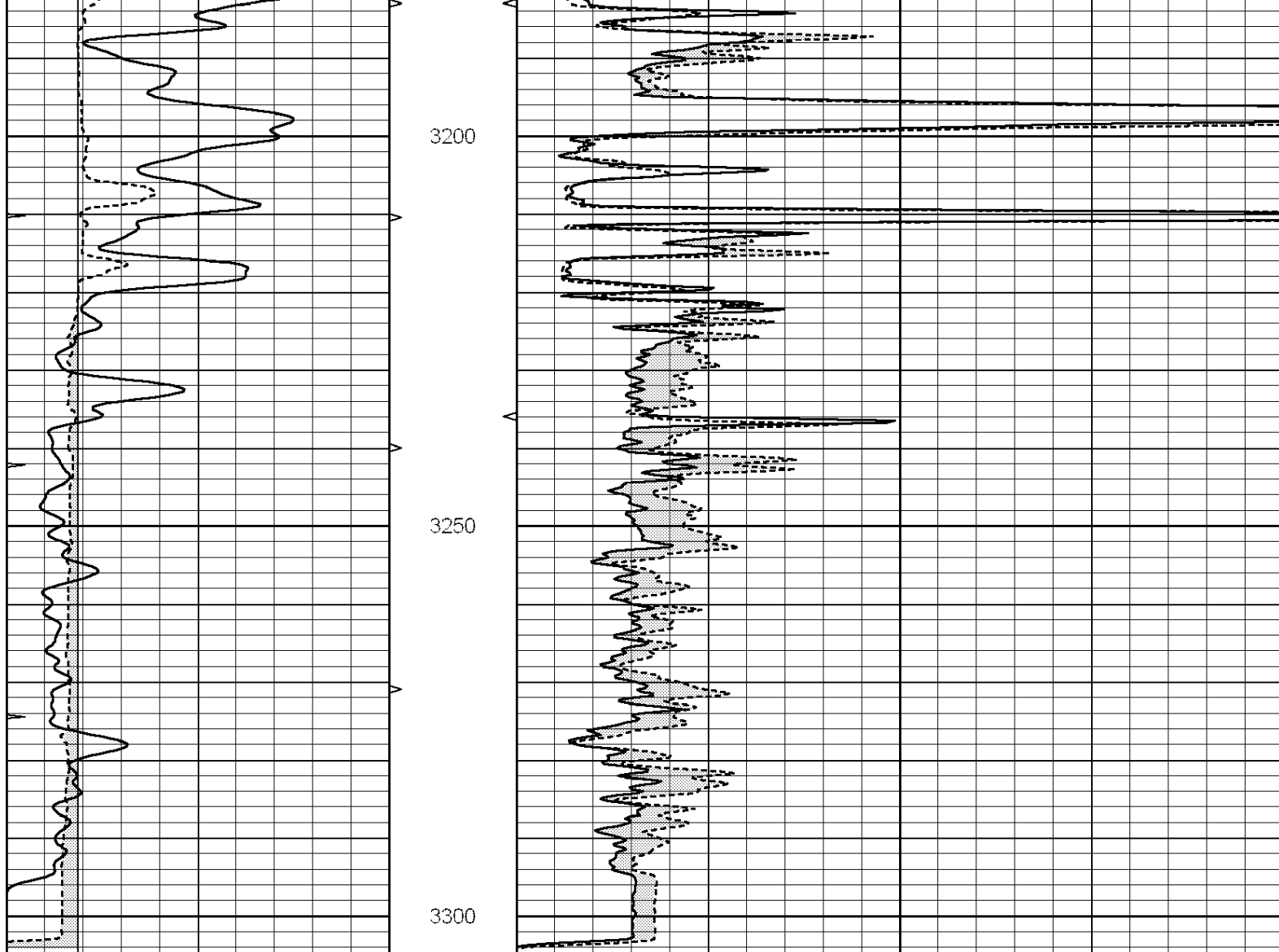
NABORS
COMPLETION & PRODUCTION SERVICES CO.

REPEAT SECTION

Database File: 010017ddn.db
 Dataset Pathname: pass5.4
 Presentation Format: micro
 Dataset Creation: Mon Nov 19 13:06:53 2012 by Calc SOC 120430
 Charted by: Depth in Feet scaled 1:240

0	GAMMA RAY (GAPI)	150	ABHV	0	MEL1.5 (Ohm-m)	40
6	CALIPER (in)	16	10 (ft3)	0	MEL2.0 (Ohm-m)	40
0	MINMK	20	TBHV			
			0 (ft3)	10		





0	GAMMA RAY (GAPI)	150	ABHV	0	MEL1.5 (Ohm-m)	40
6	CALIPER (in)	16	10 (ft3)	0	MEL2.0 (Ohm-m)	40
0	MINMK	20	TBHV			
			0 (ft3)	10		

Calibration Report

Database File: 010017ddn.db
 Dataset Pathname: pass6.3
 Dataset Creation: Mon Nov 19 13:01:12 2012 by Calc SOC 120430

MICRO Calibration Report

Serial Number: 2
 Tool Model: PROBE
 Performed: Mon Nov 12 13:35:11 2012

Caliper Calibration: Gain=3.929 Offset=3.858

References	Low Cal	High Cal
Readings	8.300	15.000
	1.130	2.835

1.5" Calibration: Gain=25.000 Offset=0.000

References	Low Cal	High Cal
Readings	0.000	20.000
	0.065	1.210

2" Calibration:

Gain=40.000

Offset=0.000

References

Low Cal

High Cal

0.000

20.000

Readings

0.012

1.043

Gamma Ray Calibration Report

Serial Number:

GR4

Tool Model:

OPEN

Performed:

Thu Nov 15 15:17:45 2012

Calibrator Value:

200.0

GAPI

Background Reading:

0.0

cps

Calibrator Reading:

189.0

cps

Sensitivity:

1.3500

GAPI/cps