



Pioneer Energy Services

Dual Compensated Porosity Log

15-109-21,140-00-00

API No.

Company **Brito Oil Company, Inc.**
 Well **Fairleigh "F" No. 1-8**
 Field **Wildcat**
 County **Logan** State **Kansas**

Location **SW NW SE SW**
888' FSL & 1,350' FWL
 Sec: **8** Twp: **15S** Rge: **32W**

Other Services
 DIL
 MEL

Permanent Datum **Ground Level** Elevation **2740**
 Log Measured From **Kelly Bushing** 11 Ft. Above Perm. Datum
 Drilling Measured From **Kelly Bushing**

Elevation
 K.B. 2751
 D.F.
 G.L. 2740

Date	12/2/2012	
Run Number	One	
Type Log	CNL / CDL	
Depth Driller	4453	
Depth Logger	4453	
Bottom Logged Interval	4432	
Top Logged Interval	3400	
Type Fluid In Hole	Chemical	
Salinity, PPM CL	4000	
Density	9.3	
Level	Full	
Max. Rec. Temp. F	121	
Operating Rig Time	4 Hours	
Equipment -- Location	108 Hays	
Recorded By	J. Long	
Witnessed By	Vern Schrag	

Borehole Record

Casing Record

Run No.	Bit	From	To	Size	Wgt.	From	To
1	12.25	00	223	8.625	24#	00	223
2	7.875	223	4453				

<<< Fold Here >>>

All interpretations are opinions based on inferences from electrical or other measurements and we cannot and do not guarantee the accuracy or correctness of any interpretation, and we shall not, except in the case of gross or willful negligence on our part, be liable or responsible for any loss, costs, damages, or expenses incurred or sustained by anyone resulting from any interpretation made by any of our officers, agents or employees. These interpretations are also subject to our general terms and conditions set out in our current Price Schedule.

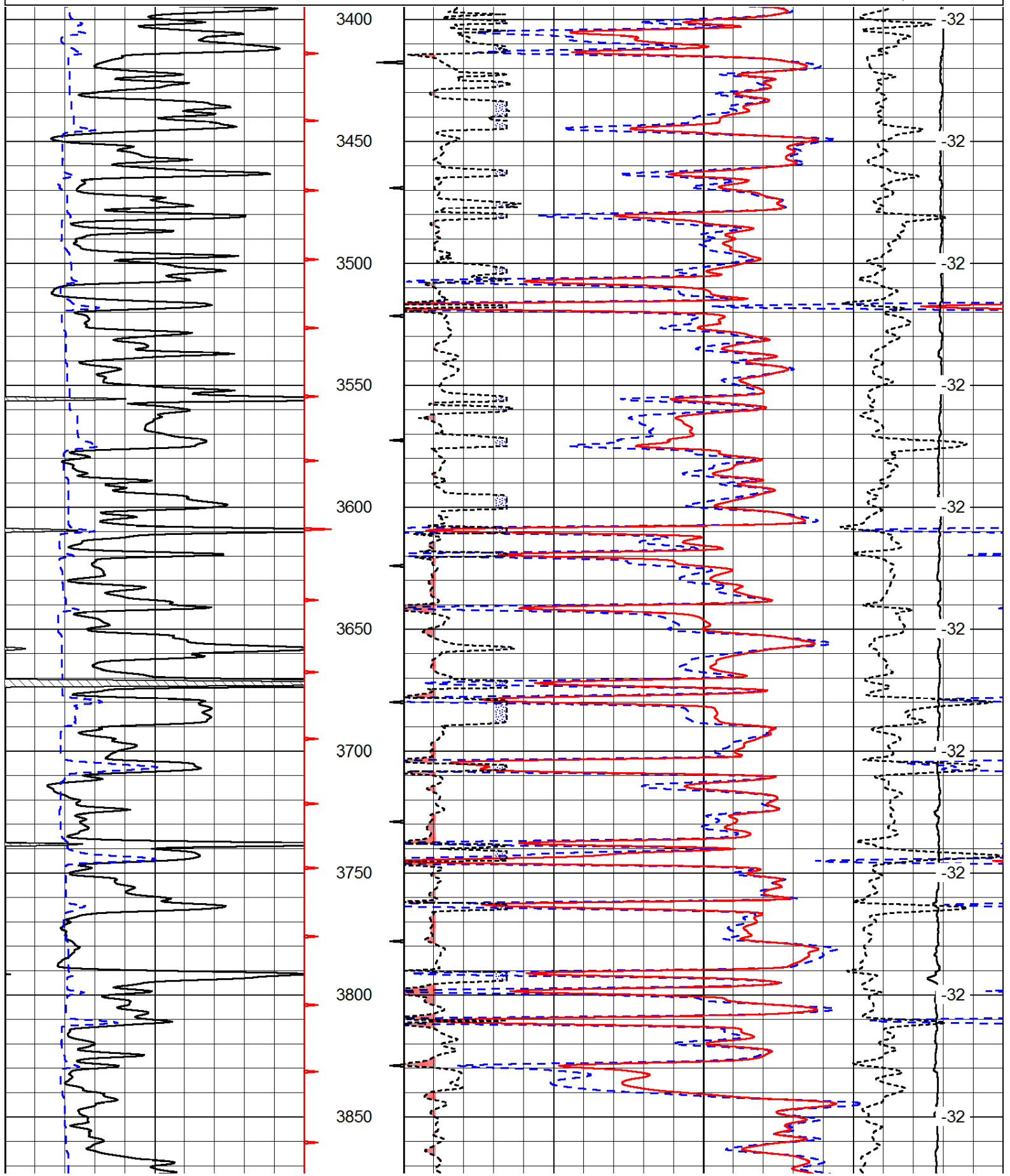
Comments

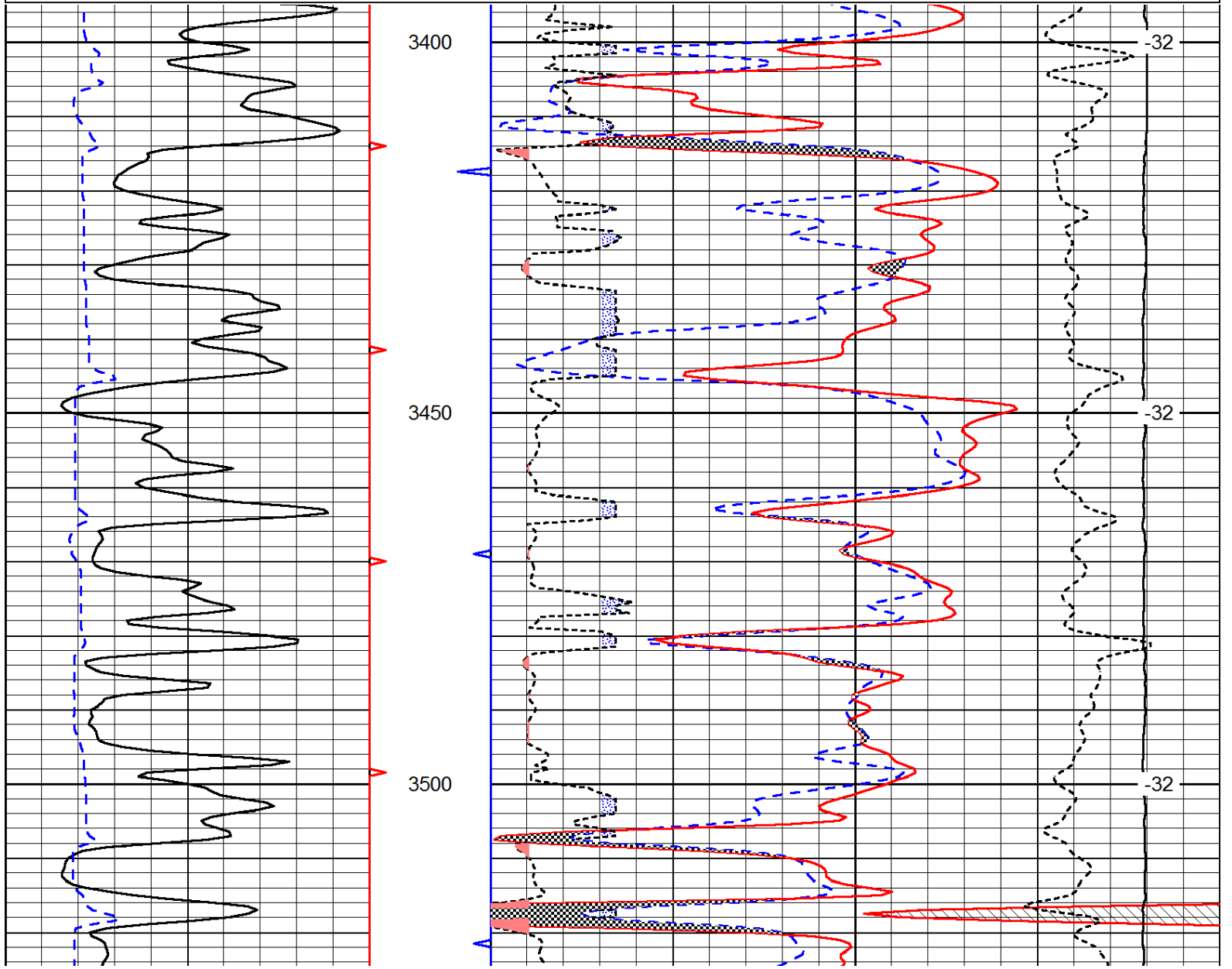
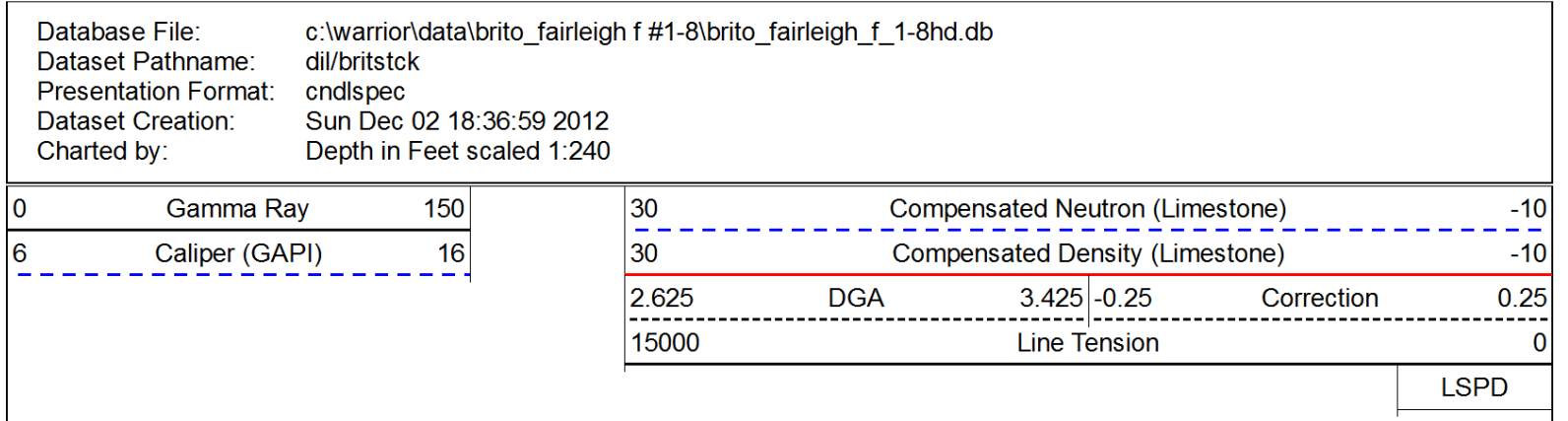
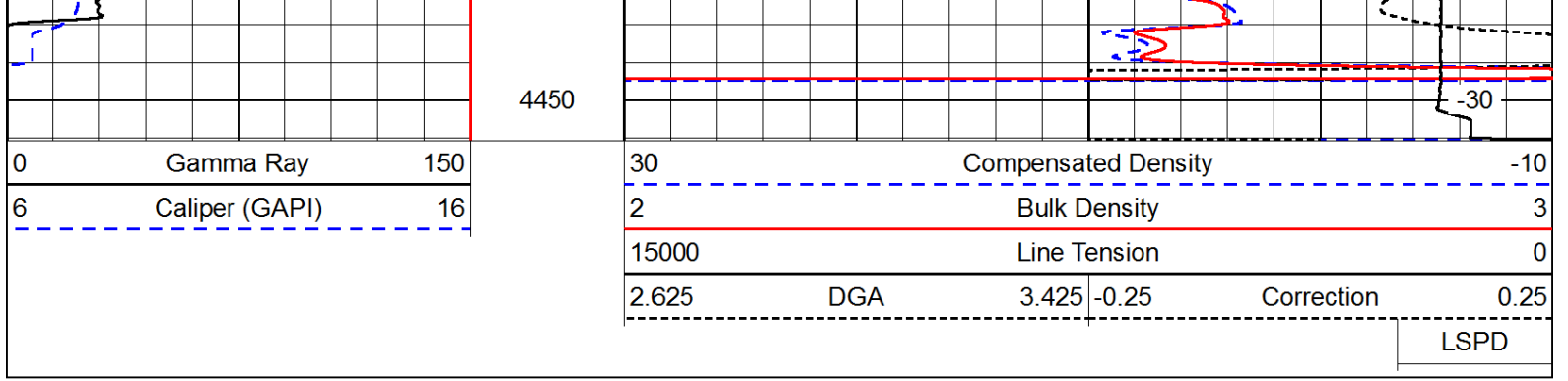
Thank you for using Pioneer Energy Services
 www.pioneerenergy.com
 785 625 3858

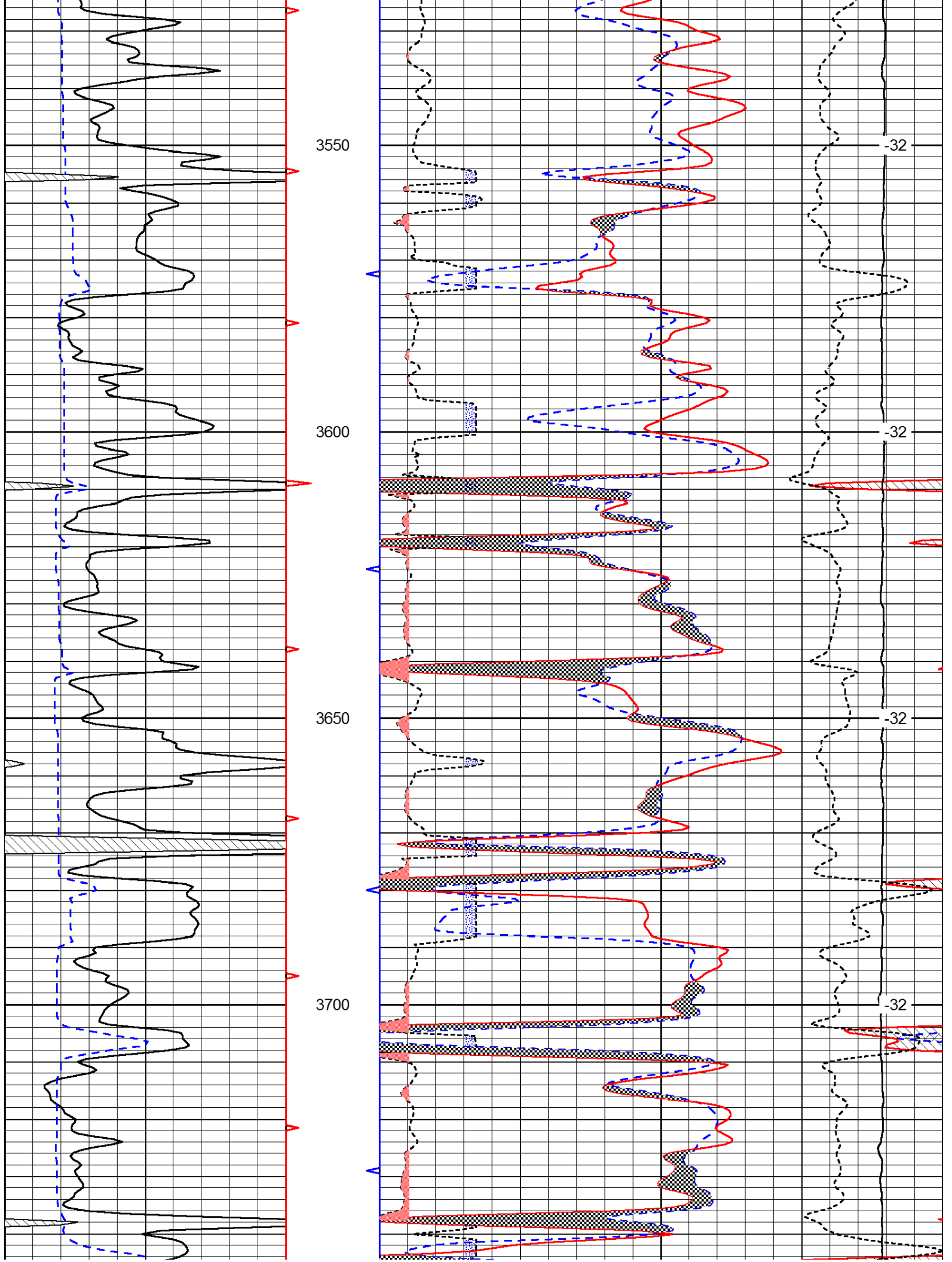
Oakley, 23 South to Gold Road, 4 1/2 West to T, 2 South to Tank Batteries, 2-3 East through double red gate, (East/Southeast through closely spaced cattle guards)

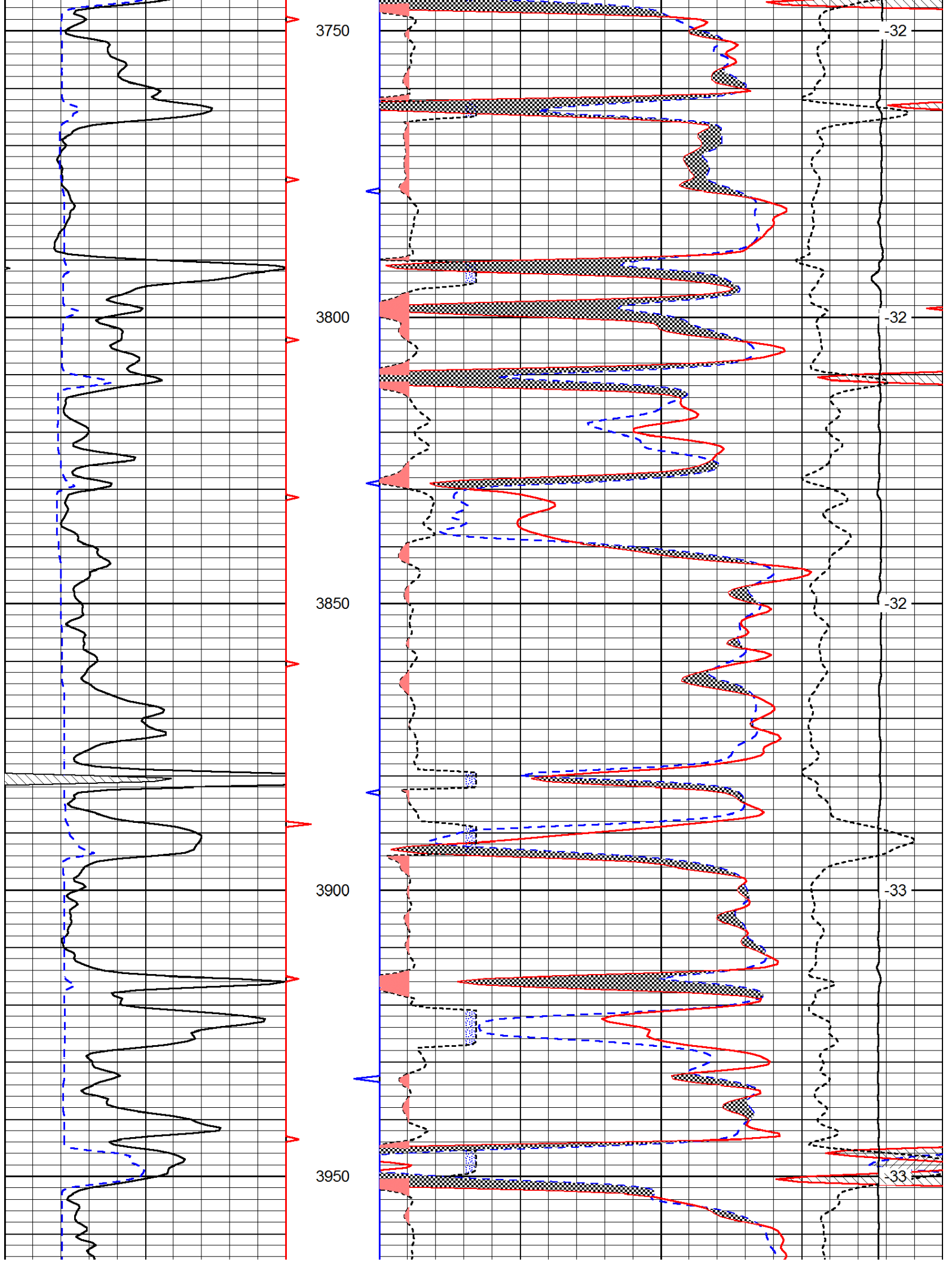
0	Gamma Ray	150
6	Caliper (GAPI)	16

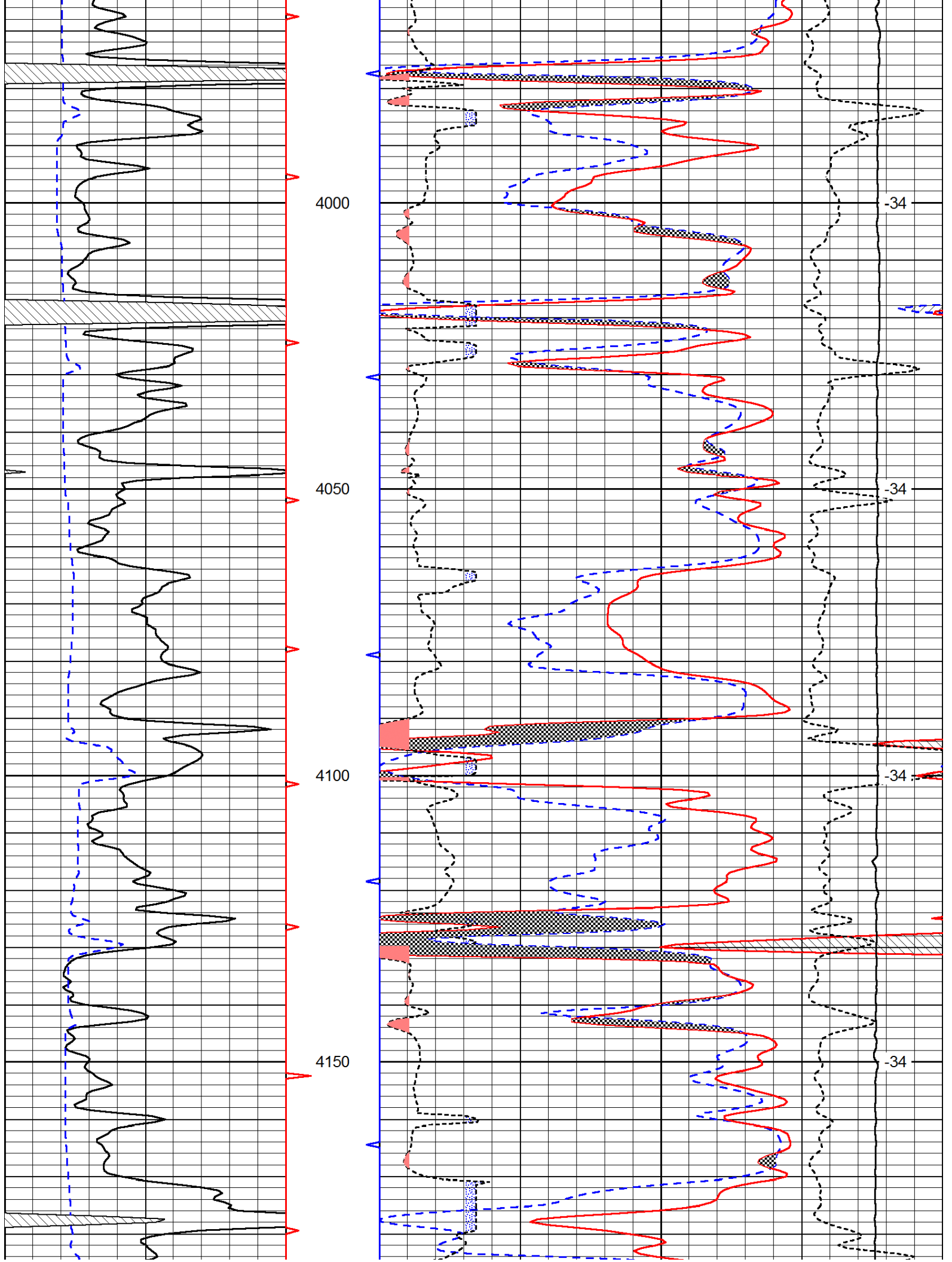
30	Compensated Density		-10
2	Bulk Density		3
15000	Line Tension		0
2.625	DGA	3.425	-0.25
			Correction
			LSPD

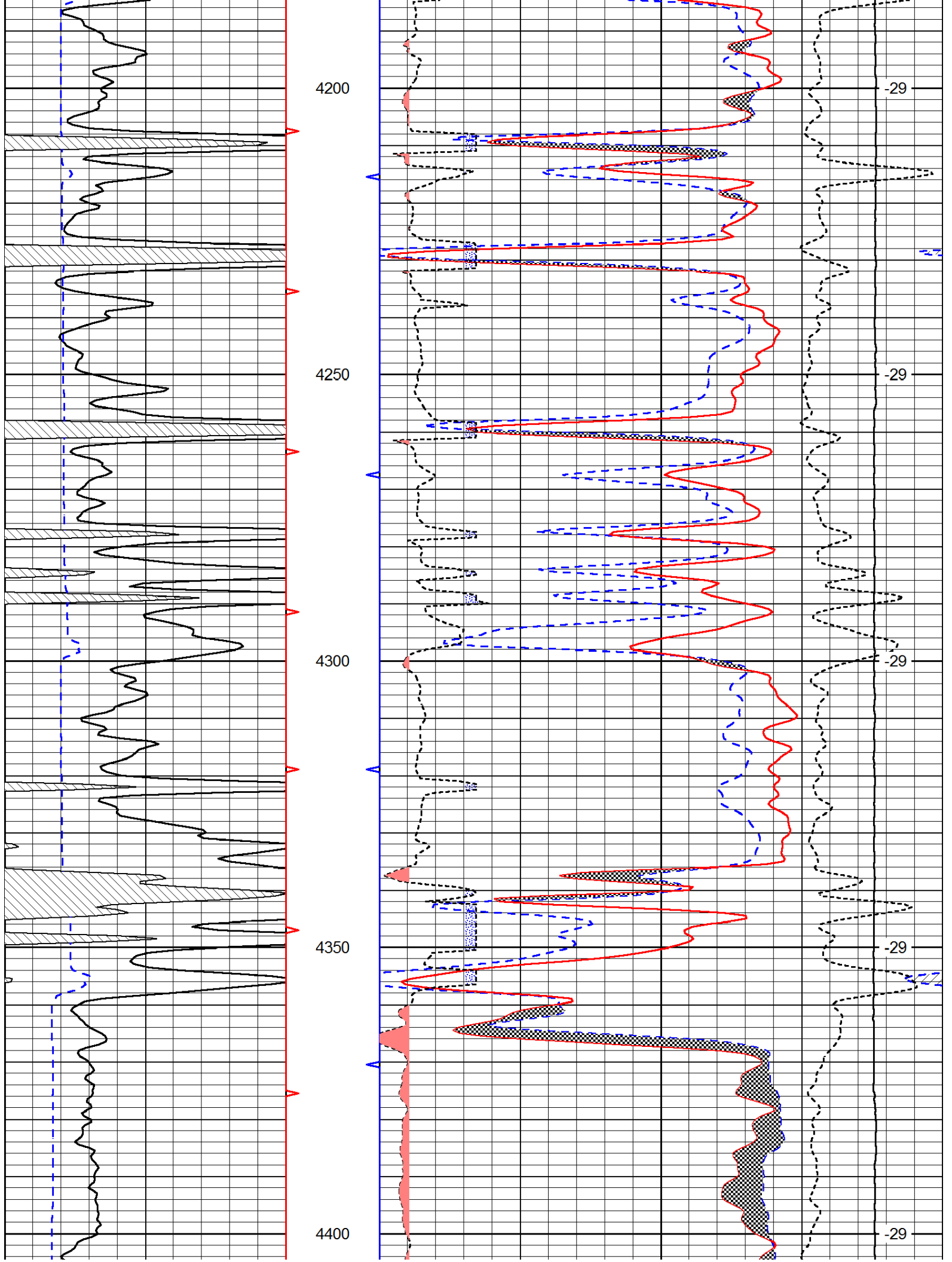


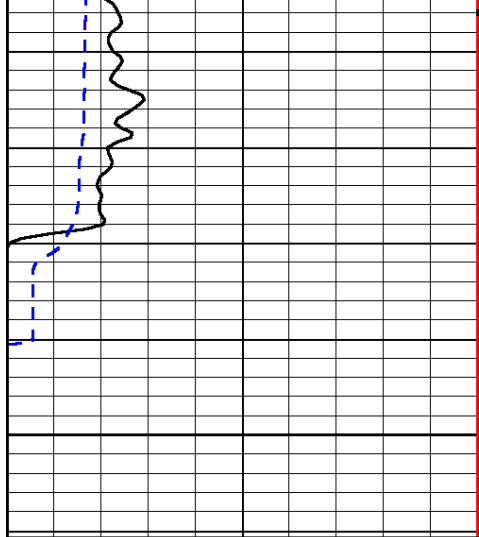




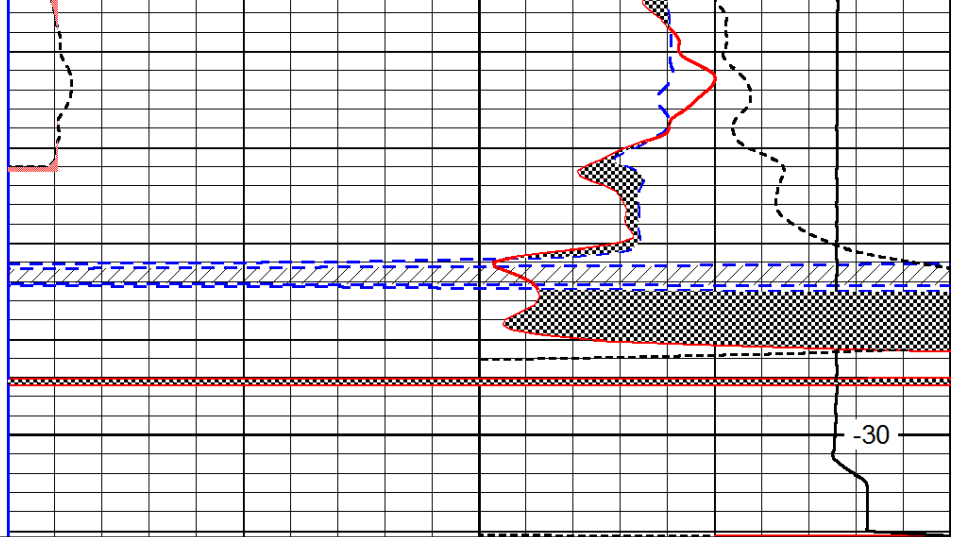








4450



0	Gamma Ray	150
6	Caliper (GAPI)	16

30	Compensated Neutron (Limestone)		-10
30	Compensated Density (Limestone)		-10
2.625	DGA	3.425	-0.25
			Correction
15000	Line Tension		0

LSPD