



Pioneer Energy Services

# Dual Induction Log

15-109-21,140-00-00

API No.

Company **Brito Oil Company, Inc.**  
 Well **Fairleigh "F" No. 1-8**  
 Field **Wildcat**  
 County **Logan** State **Kansas**

Location **SW NW SE SW**  
**888' FSL & 1,350' FWL**  
 Sec: **8** Twp: **15S** Rge: **32W**

Other Services  
 CNL/CDL  
 MEL

Permanent Datum **Ground Level** Elevation **2740**  
 Log Measured From **Kelly Bushing** 11 Ft. Above Perm. Datum  
 Drilling Measured From **Kelly Bushing**

Elevation  
 K.B. 2751  
 D.F. 2740  
 G.L. 2740

|                        |             |  |
|------------------------|-------------|--|
| Date                   | 12/2/2012   |  |
| Run Number             | One         |  |
| Depth Driller          | 4453        |  |
| Depth Logger           | 4453        |  |
| Bottom Logged Interval | 4452        |  |
| Top Log Interval       | 200         |  |
| Casing Driller         | 8.625 @ 223 |  |
| Casing Logger          | 222         |  |
| Bit Size               | 7.875       |  |
| Type Fluid in Hole     | Chemical    |  |
| Salinity, ppm CL       | 4000        |  |
| Density / Viscosity    | 9.3 55      |  |
| pH / Fluid Loss        | 11.0 8.0    |  |
| Source of Sample       | Flowline    |  |
| Rm @ Meas. Temp        | .50 @ 64    |  |
| Rmf @ Meas. Temp       | .38 @ 64    |  |
| Rmc @ Meas. Temp       | .68 @ 64    |  |
| Source of Rmf / Rmc    | Charts      |  |
| Rm @ BHT               | .27 @ 121   |  |
| Operating Rig Time     | 4 Hours     |  |
| Max Rec. Temp. F       | 121         |  |
| Equipment Number       | 108         |  |
| Location               | Hays        |  |
| Recorded By            | J. Long     |  |
| Witnessed By           | Vern Schrag |  |

<<< Fold Here >>>

All interpretations are opinions based on inferences from electrical or other measurements and we cannot and do not guarantee the accuracy or correctness of any interpretation, and we shall not, except in the case of gross or willful negligence on our part, be liable or responsible for any loss, costs, damages, or expenses incurred or sustained by anyone resulting from any interpretation made by any of our officers, agents or employees. These interpretations are also subject to our general terms and conditions set out in our current Price Schedule.

### Comments

Thank you for using Pioneer Energy Services  
 www.pioneerenergy.com  
 785 625 3858

Oakley, 23 South to Gold Road, 4 1/2 West to T, 2 South to Tank Batteries, 2-3 East through double red gate, (East/Southeast through closely spaced cattle guards)

Database File: c:\warrior\data\brito\_fairleigh\_f #1-8\brito\_fairleigh\_f\_1-8hd.db  
 Dataset Pathname: dil/britstck  
 Presentation Format: dil2in  
 Dataset Creation: Sun Dec 02 18:36:59 2012  
 Charted by: Depth in Feet scaled 1:600

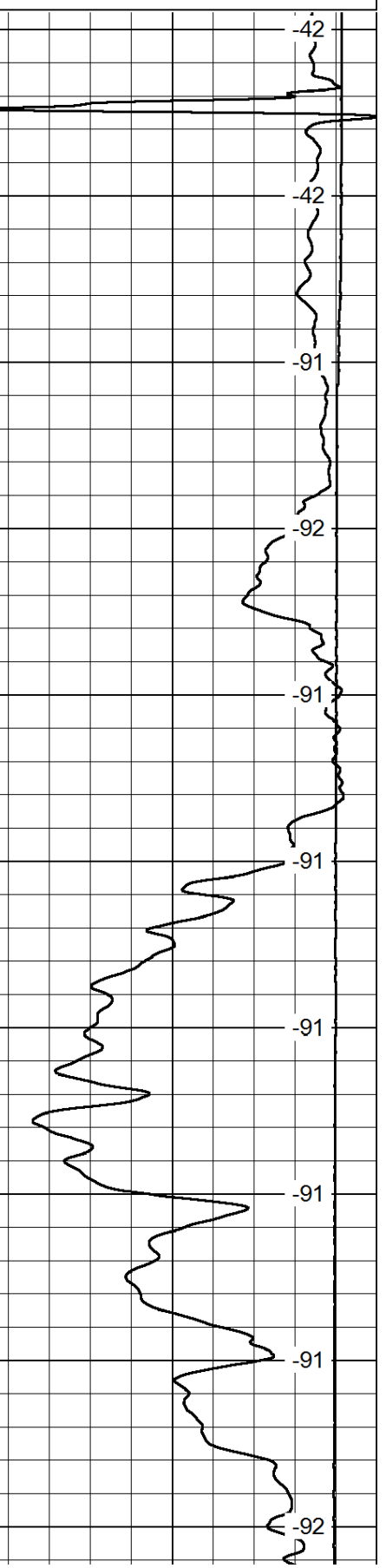
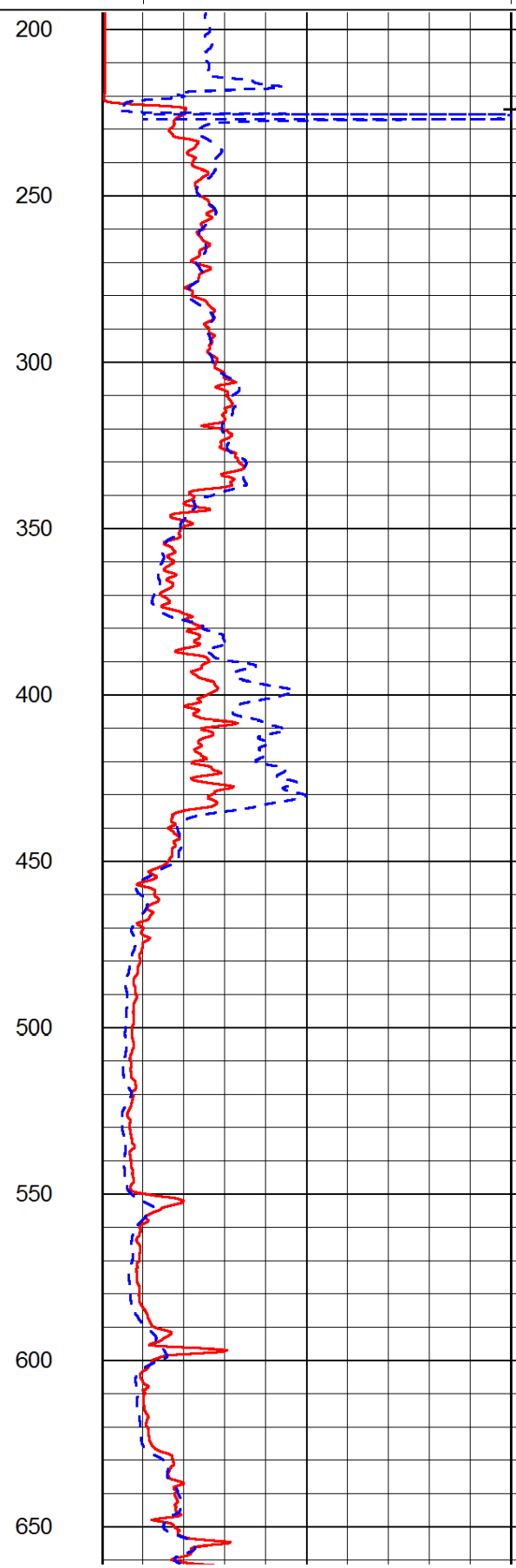
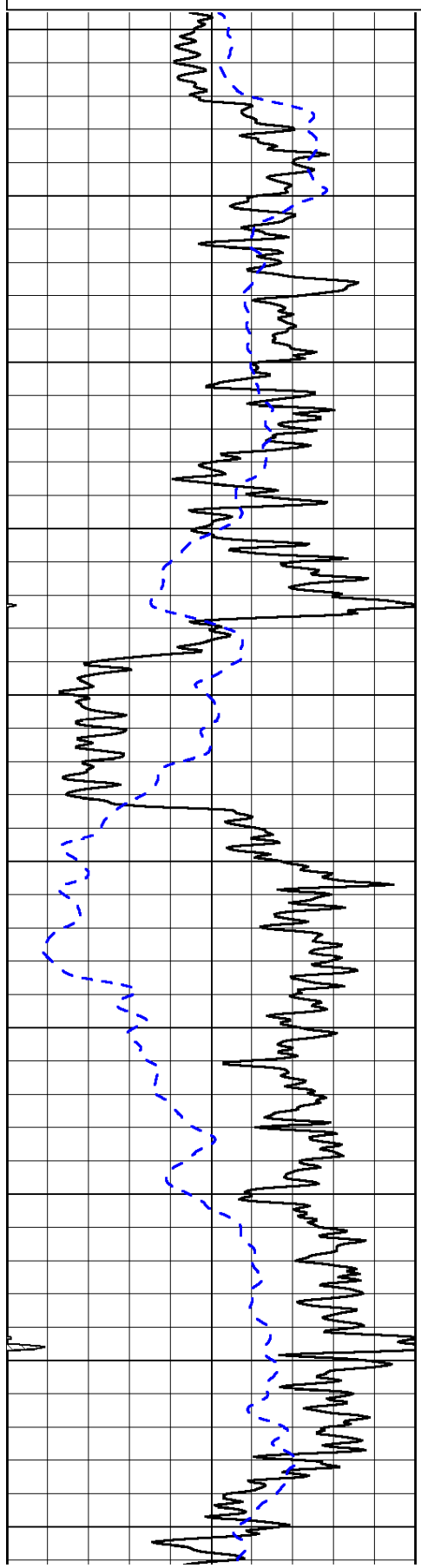
|      |           |     |
|------|-----------|-----|
| 0    | Gamma Ray | 150 |
| -200 | SP (mV)   | 0   |

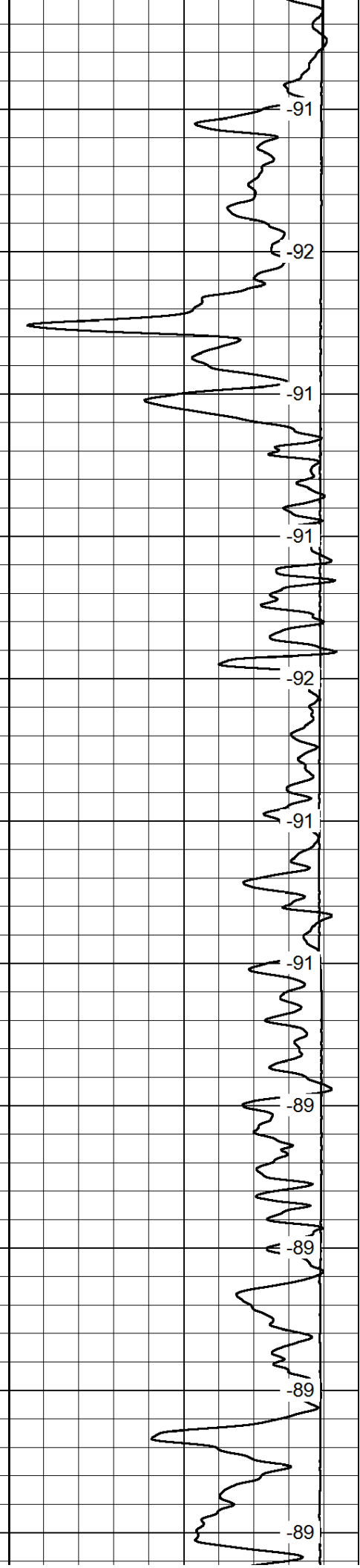
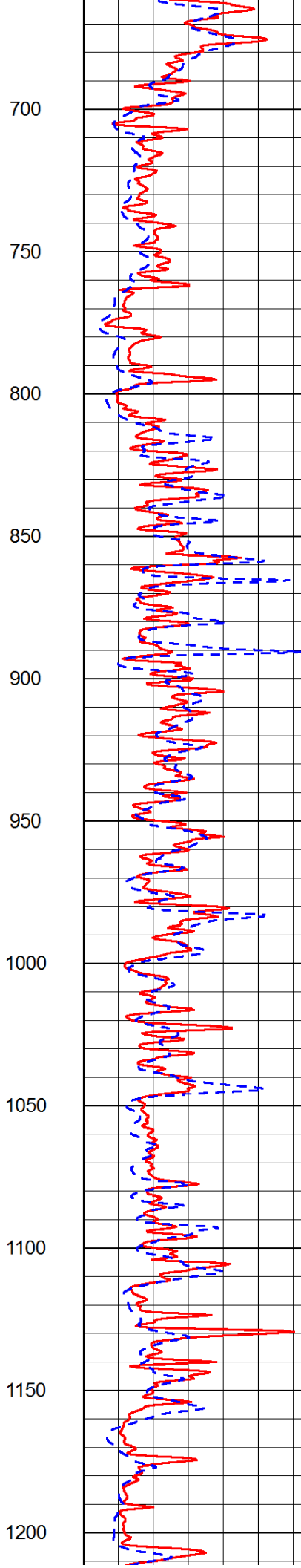
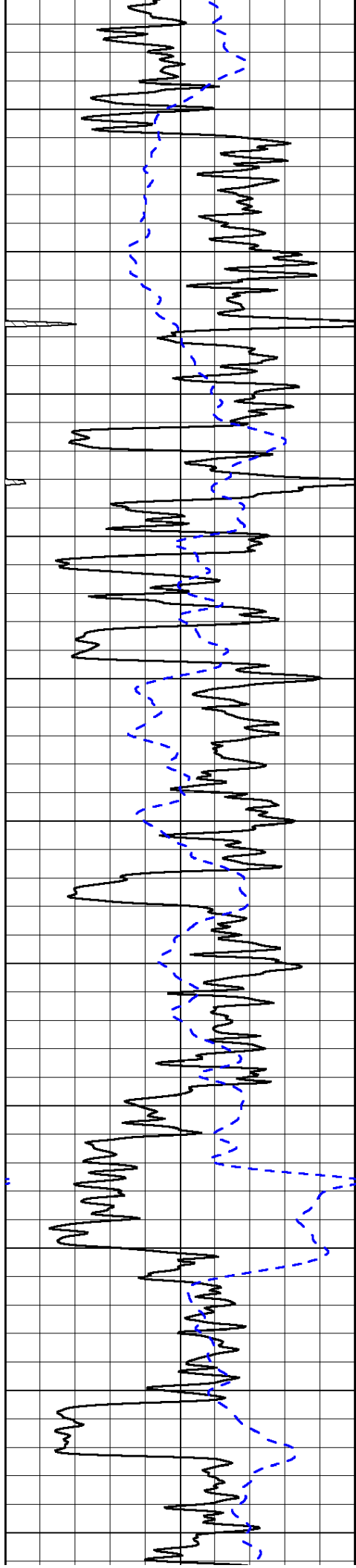
|   |                     |    |
|---|---------------------|----|
| 0 | Shallow Resistivity | 50 |
| 0 | Deep Resistivity    | 50 |

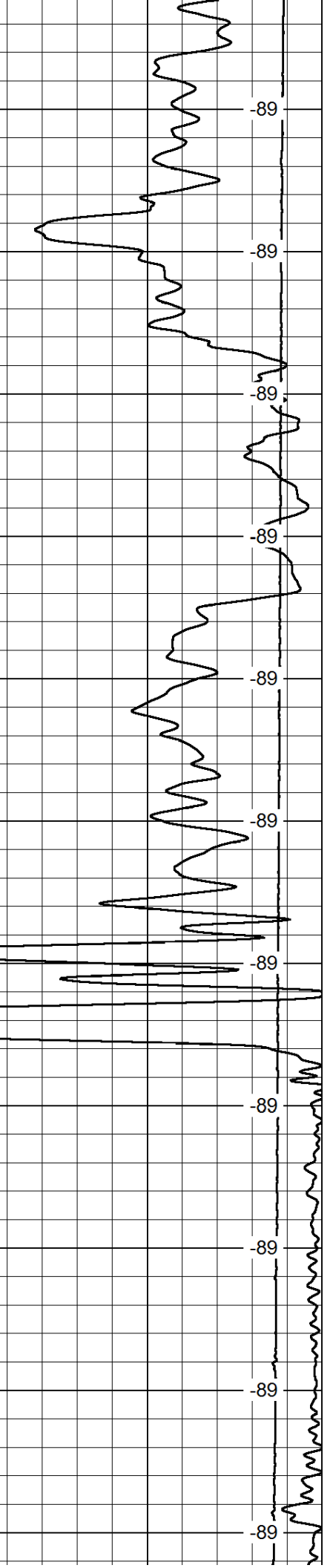
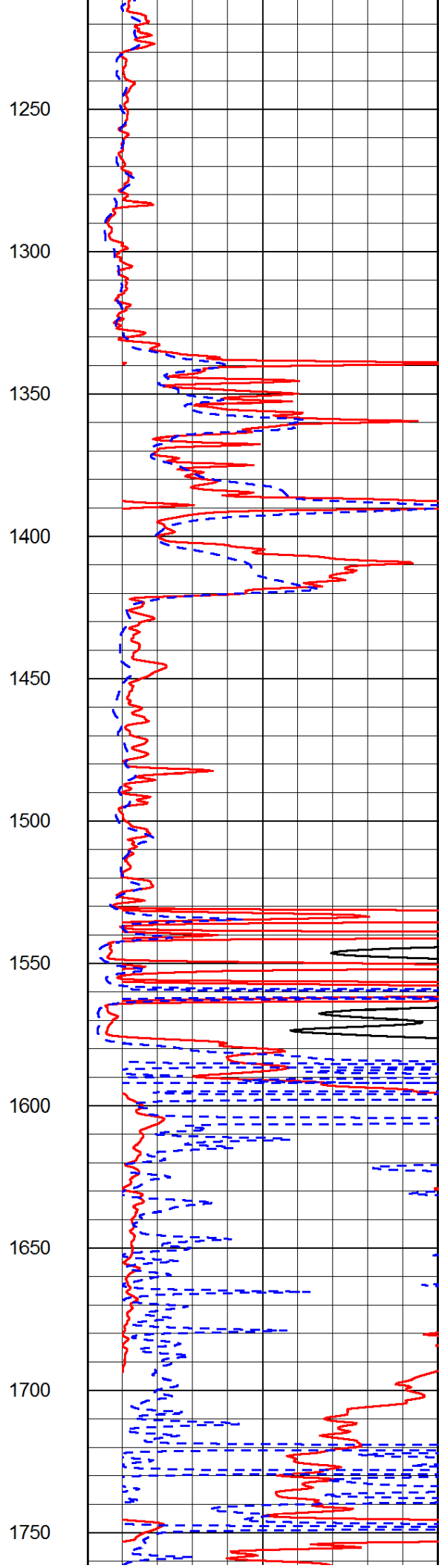
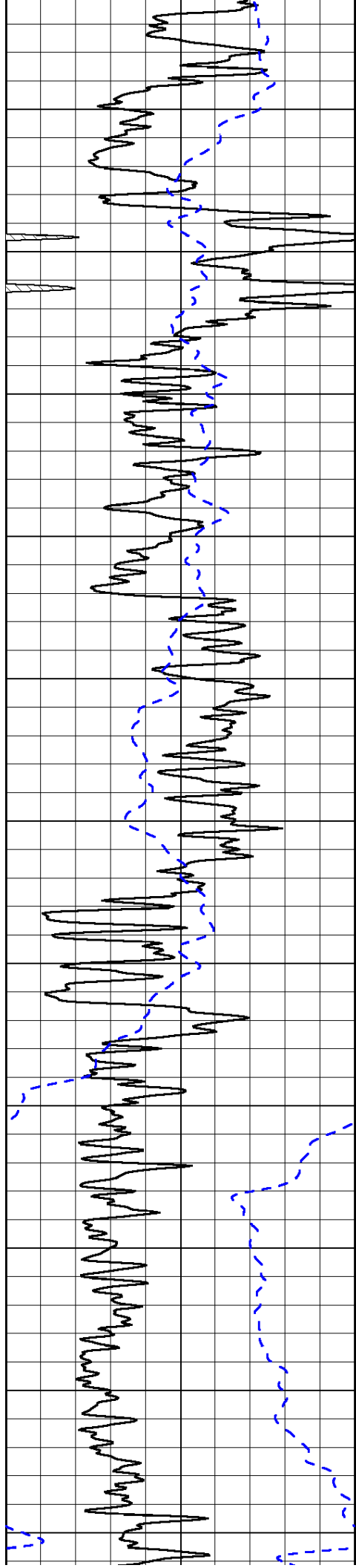
LSPD

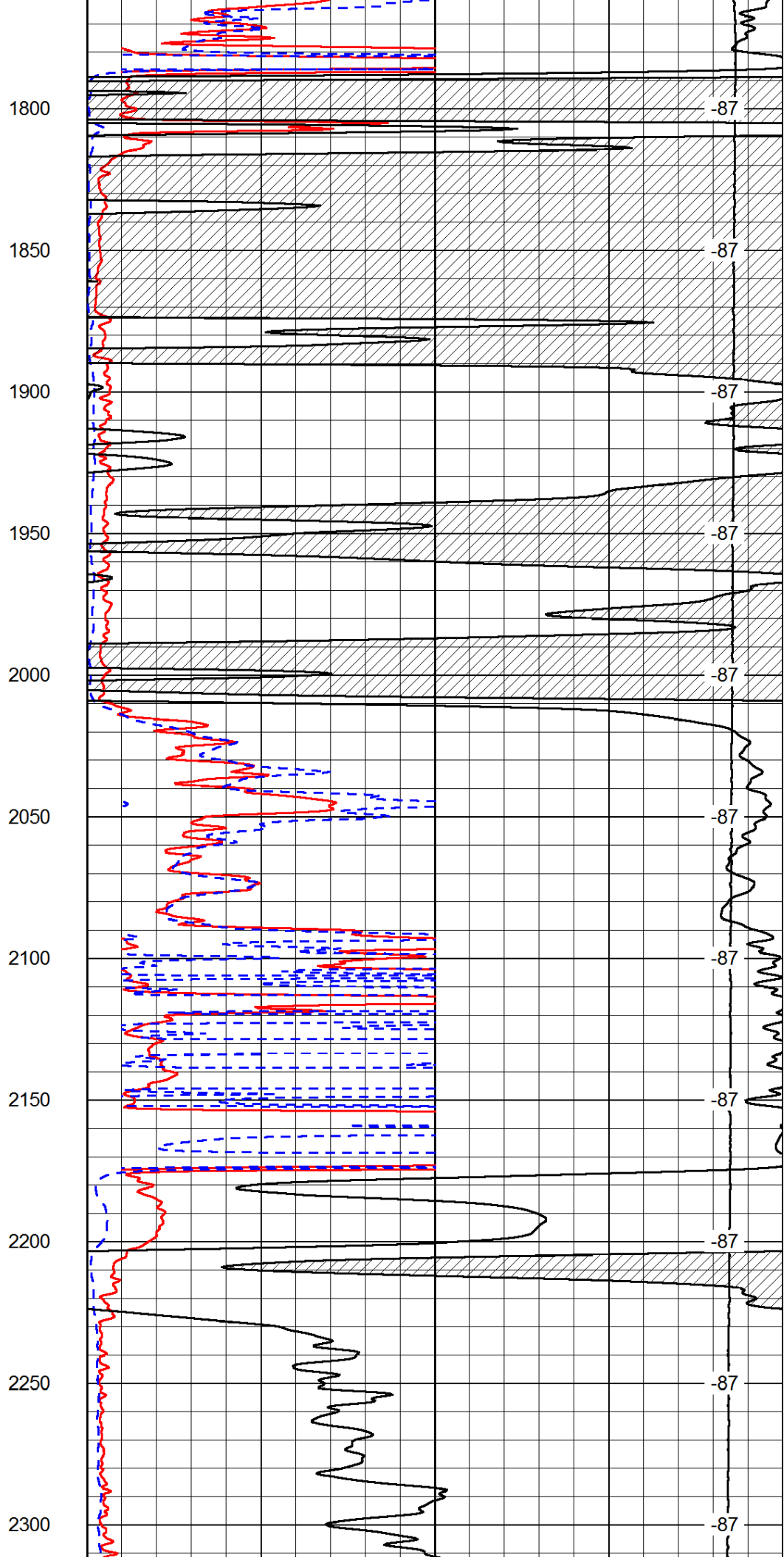
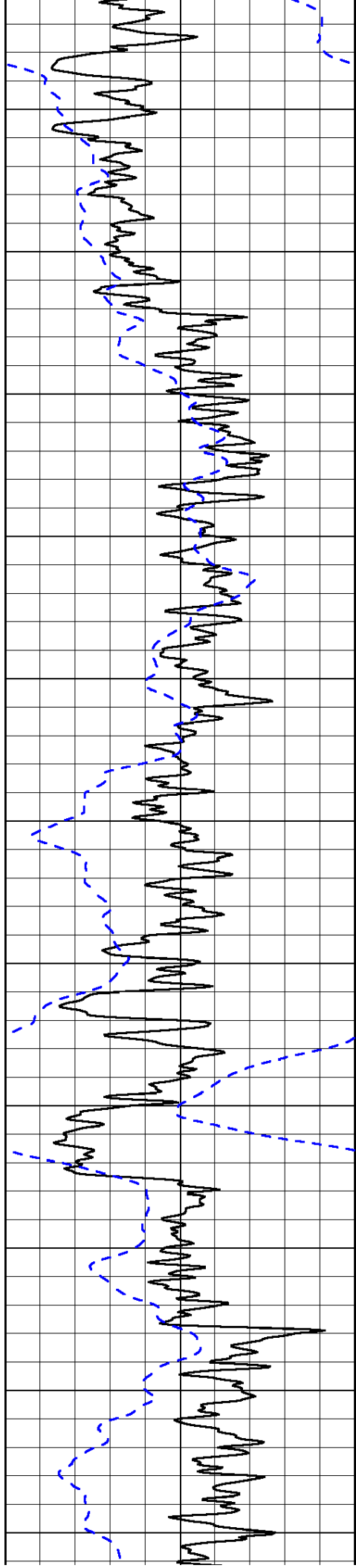
|       |              |   |
|-------|--------------|---|
| 1000  | Conductivity | 0 |
| 15000 | Line Tension | 0 |

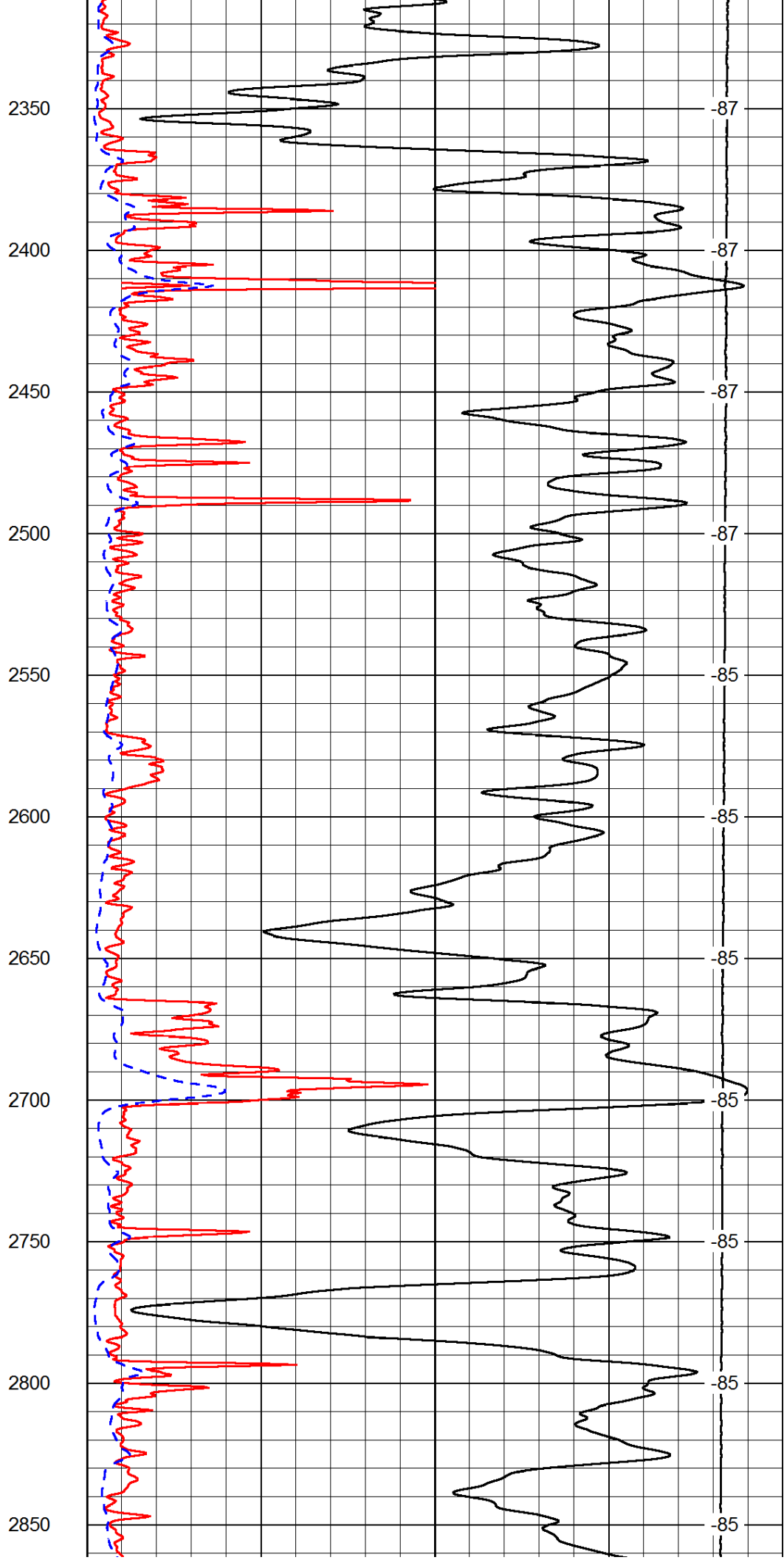
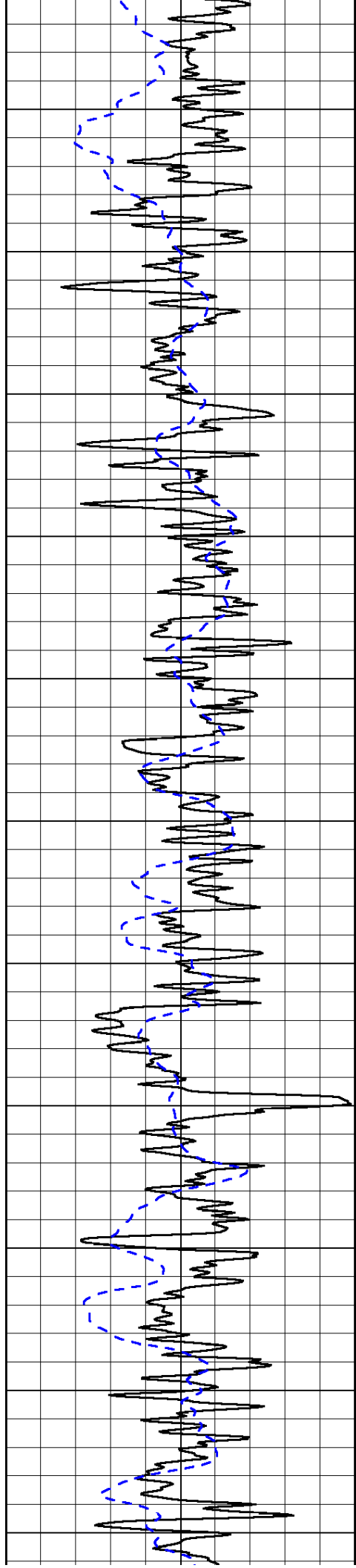
|    |                     |     |
|----|---------------------|-----|
| 50 | Shallow Resistivity | 500 |
| 50 | Deep Resistivity    | 500 |

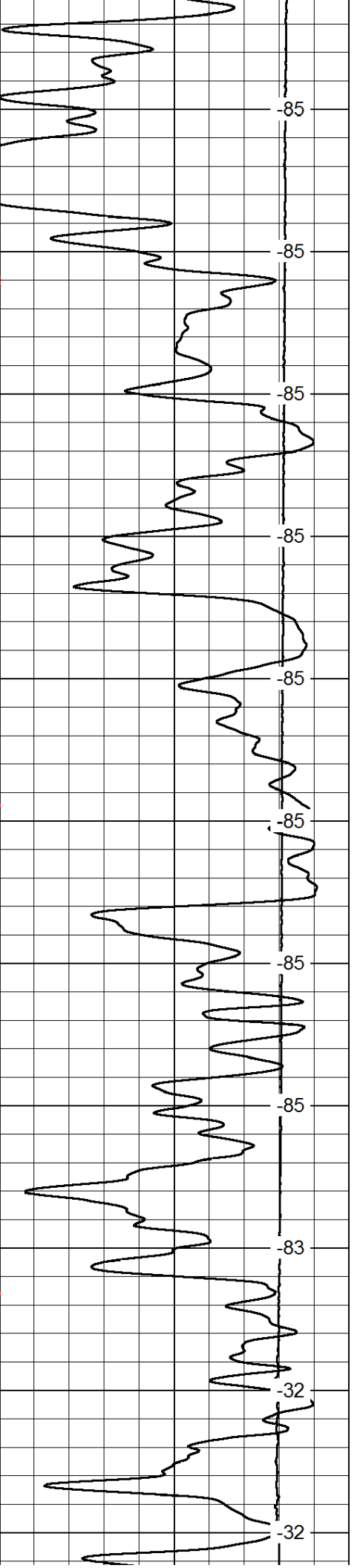
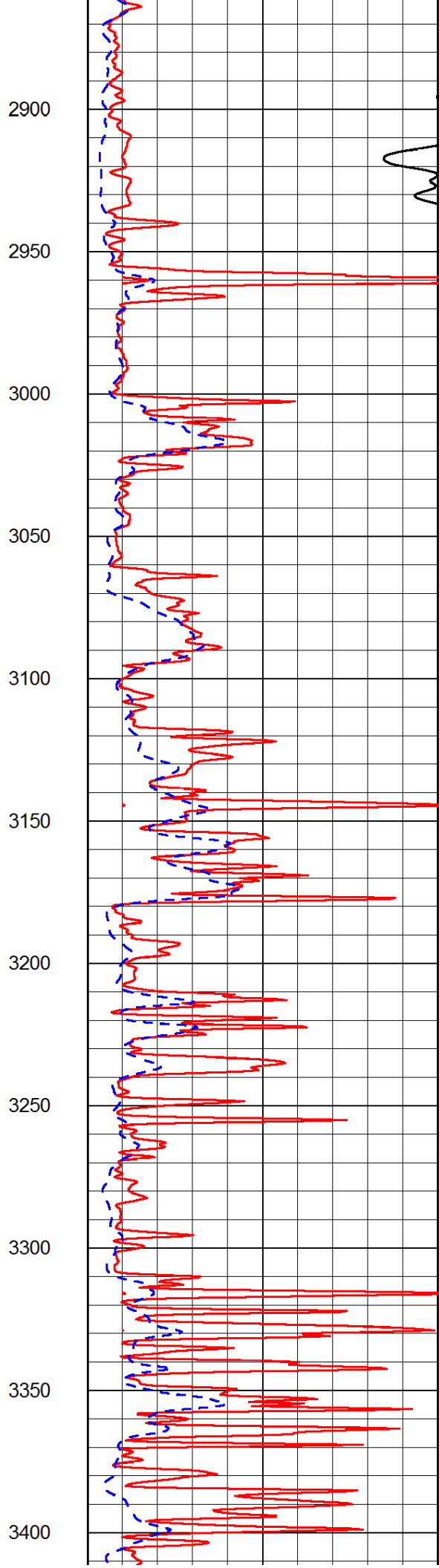
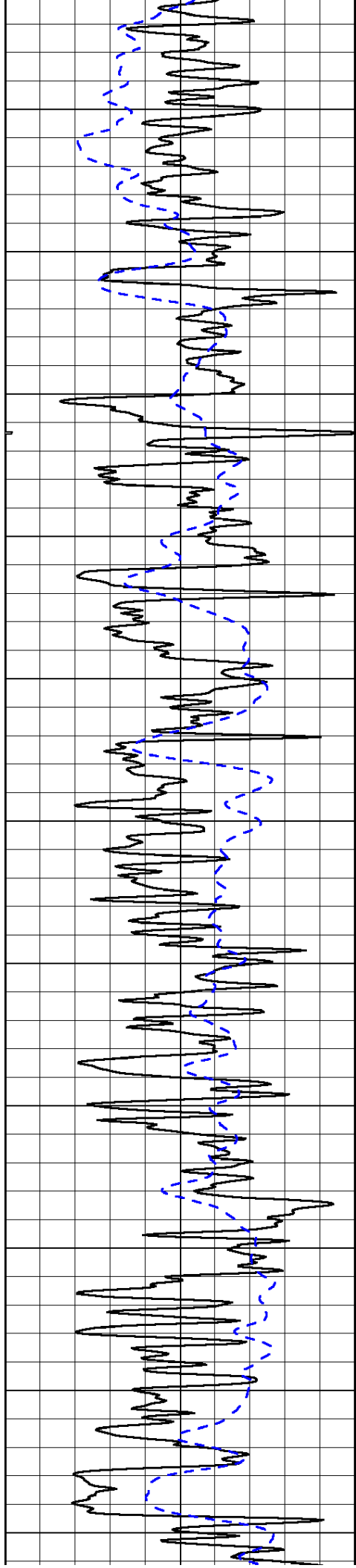


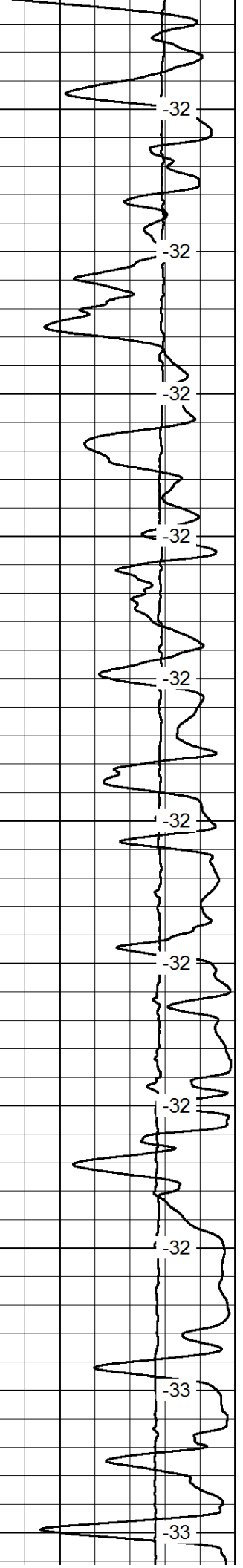
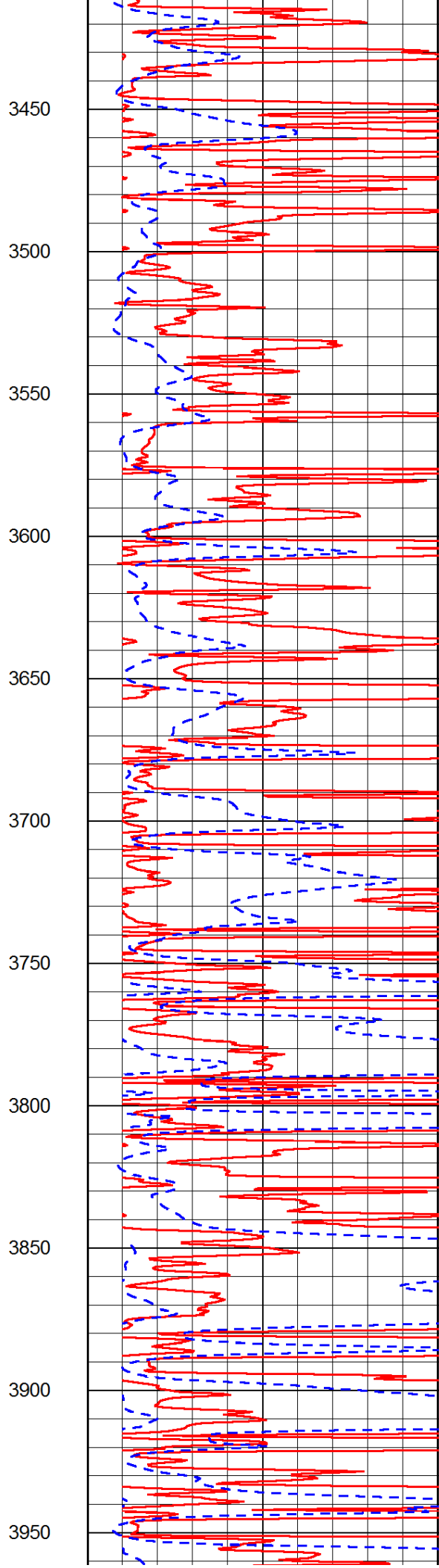
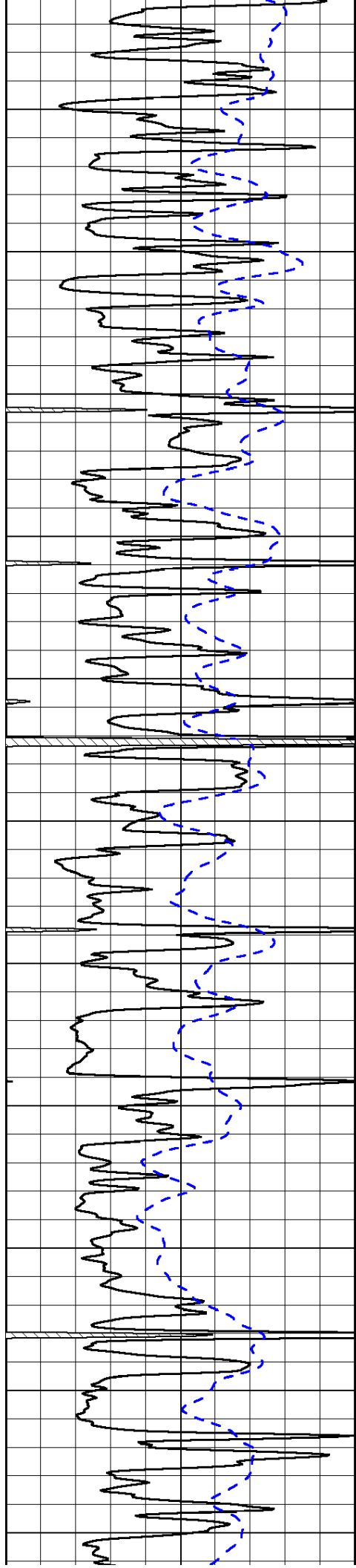


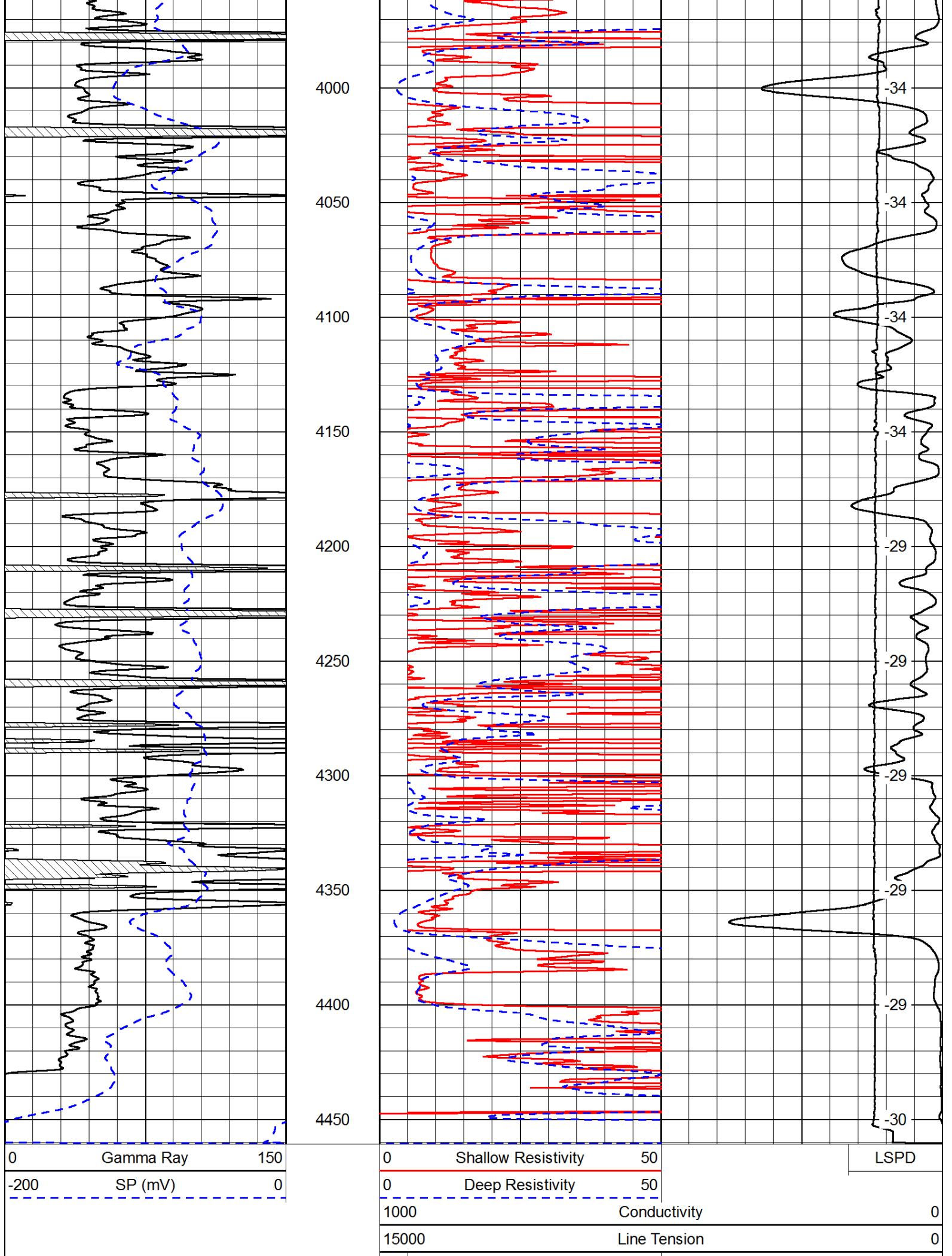












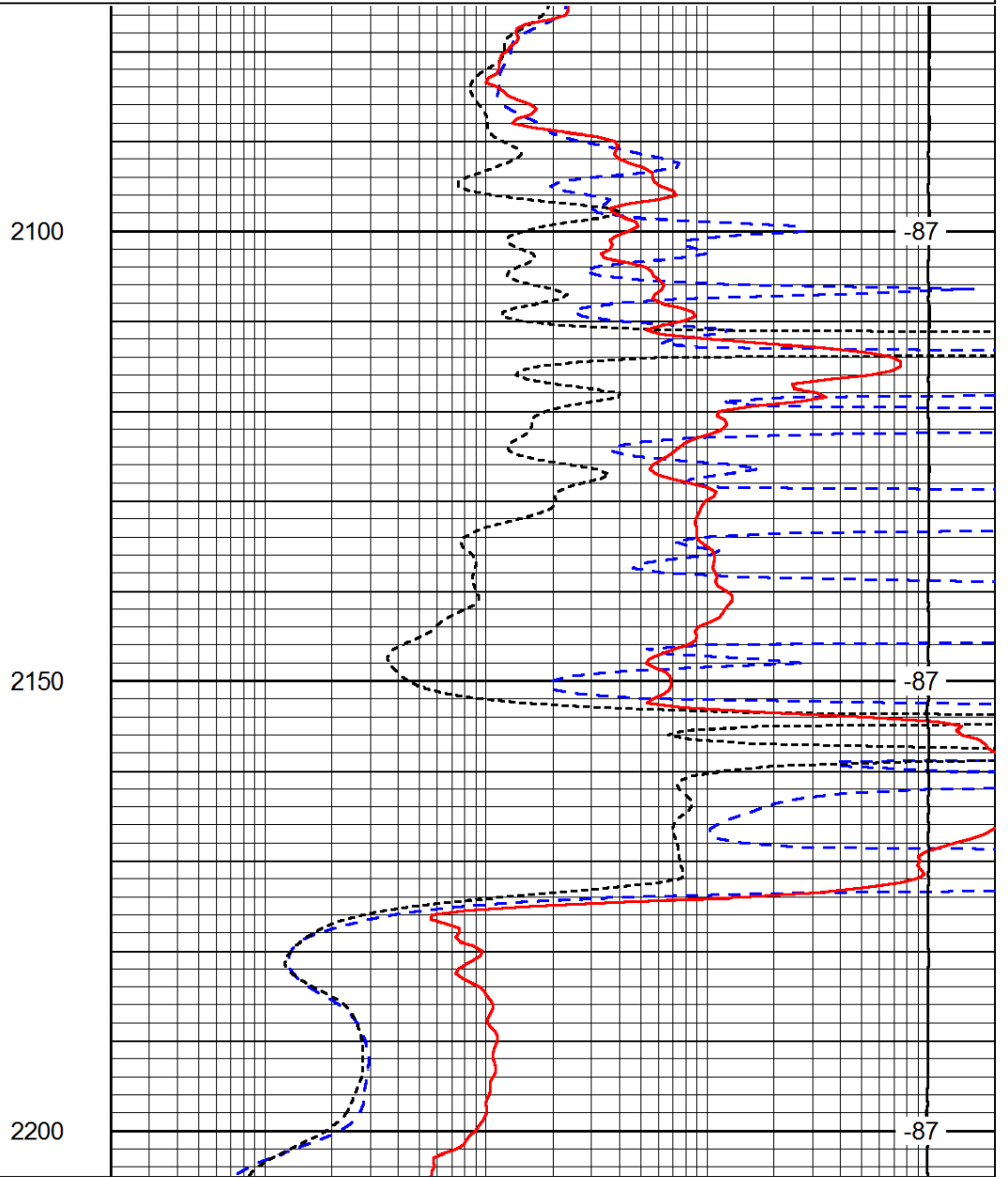
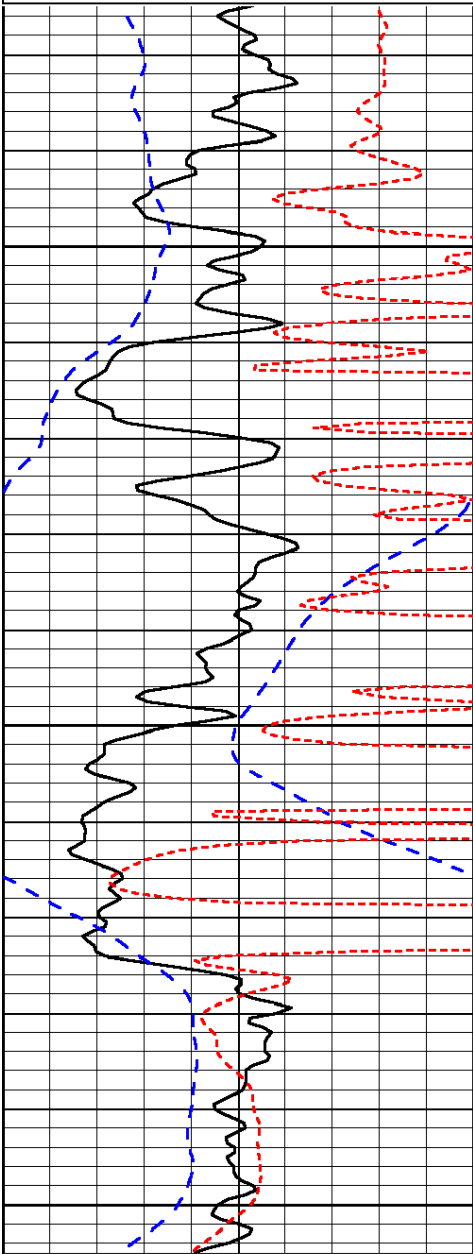
|    |                     |     |
|----|---------------------|-----|
| 50 | Shallow Resistivity | 500 |
| 50 | Deep Resistivity    | 500 |

Database File: c:\warrior\data\brito\_fairleigh f #1-8\brito\_fairleigh\_f\_1-8hd.db  
 Dataset Pathname: dil/britstck  
 Presentation Format: dil  
 Dataset Creation: Sun Dec 02 18:36:59 2012  
 Charted by: Depth in Feet scaled 1:240

|      |           |     |
|------|-----------|-----|
| 0    | Gamma Ray | 150 |
| -200 | SP (mV)   | 0   |
| -160 | RxoRt     | 40  |

|       |                     |      |
|-------|---------------------|------|
| 0.2   | Deep Resistivity    | 2000 |
| 0.2   | Medium Resistivity  | 2000 |
| 0.2   | Shallow Resistivity | 2000 |
| 15000 | Line Tension        | 0    |

LSPD



|      |           |     |
|------|-----------|-----|
| 0    | Gamma Ray | 150 |
| -200 | SP (mV)   | 0   |
| -160 | RxoRt     | 40  |

|       |                     |      |
|-------|---------------------|------|
| 0.2   | Deep Resistivity    | 2000 |
| 0.2   | Medium Resistivity  | 2000 |
| 0.2   | Shallow Resistivity | 2000 |
| 15000 | Line Tension        | 0    |

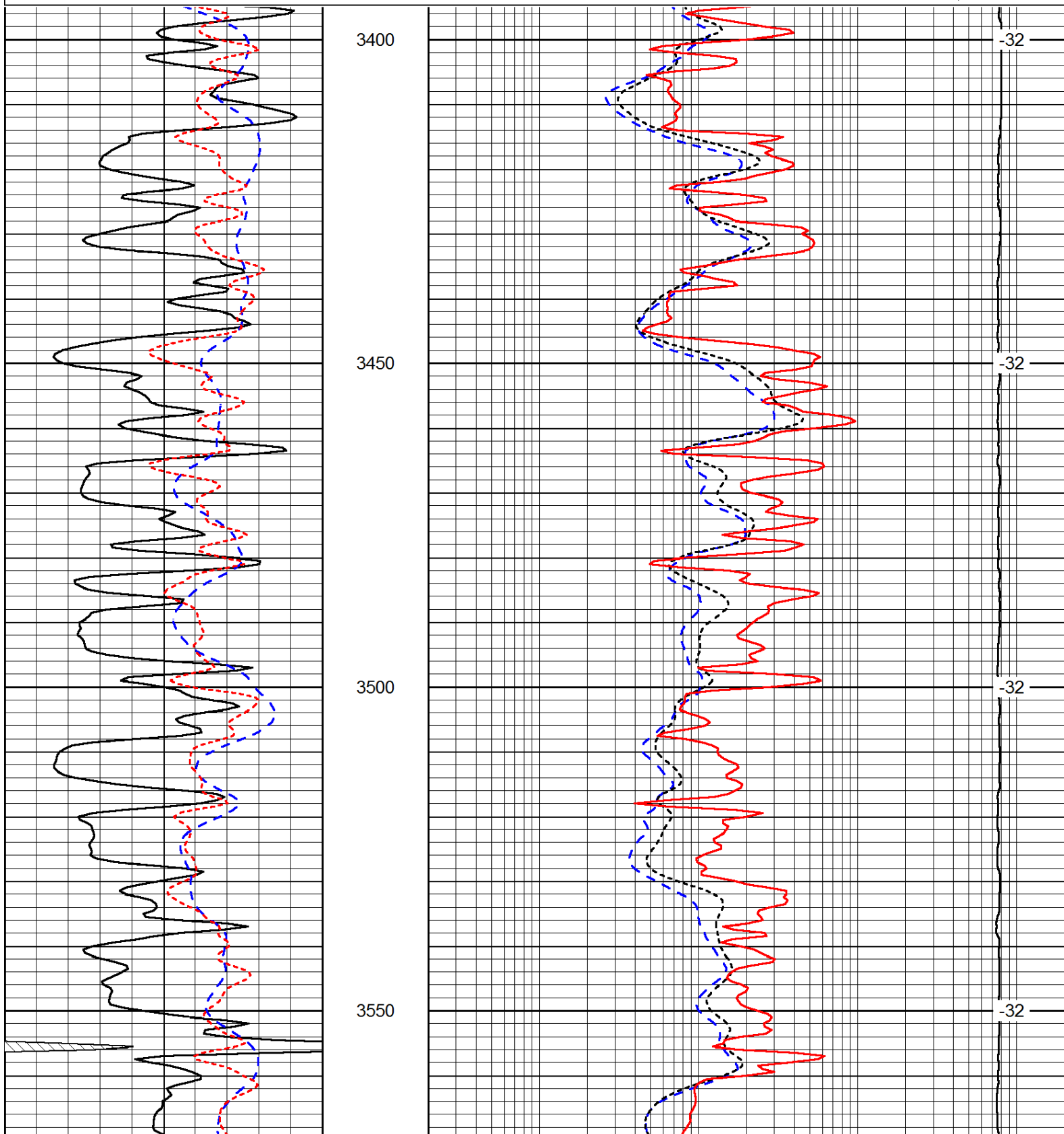
LSPD

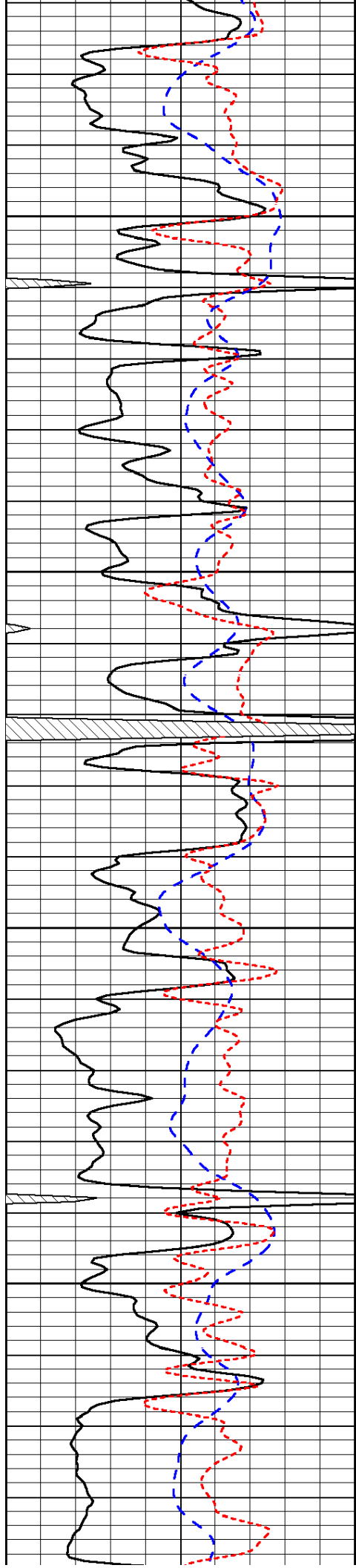
Database File: c:\warrior\data\brito\_fairleigh\_f #1-8\brito\_fairleigh\_f\_1-8hd.db  
 Dataset Pathname: dil/britstck  
 Presentation Format: dil  
 Dataset Creation: Sun Dec 02 18:36:59 2012  
 Charted by: Depth in Feet scaled 1:240

|      |           |     |
|------|-----------|-----|
| 0    | Gamma Ray | 150 |
| -200 | SP (mV)   | 0   |
| -160 | RxoRt     | 40  |

|       |                     |      |
|-------|---------------------|------|
| 0.2   | Deep Resistivity    | 2000 |
| 0.2   | Medium Resistivity  | 2000 |
| 0.2   | Shallow Resistivity | 2000 |
| 15000 | Line Tension        | 0    |

LSPD



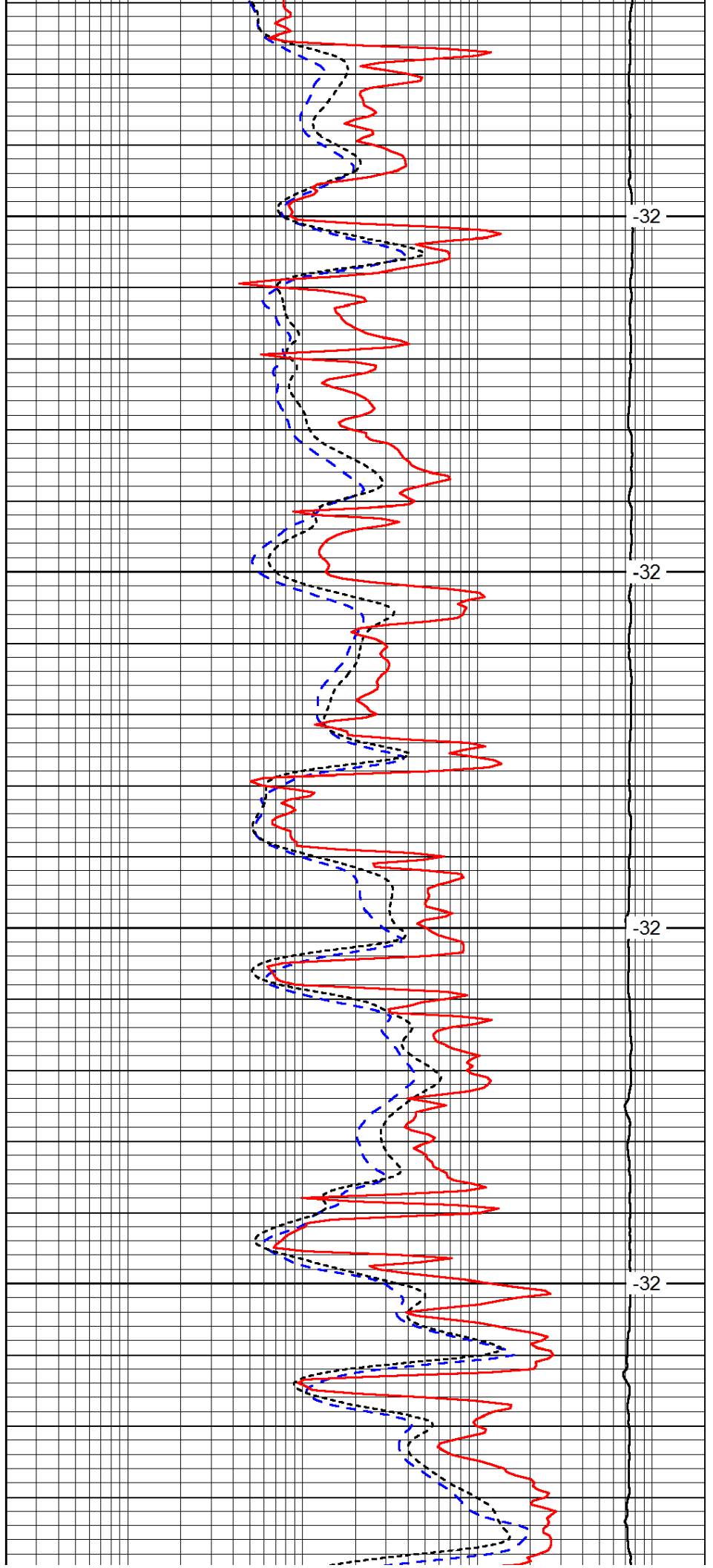


3600

3650

3700

3750

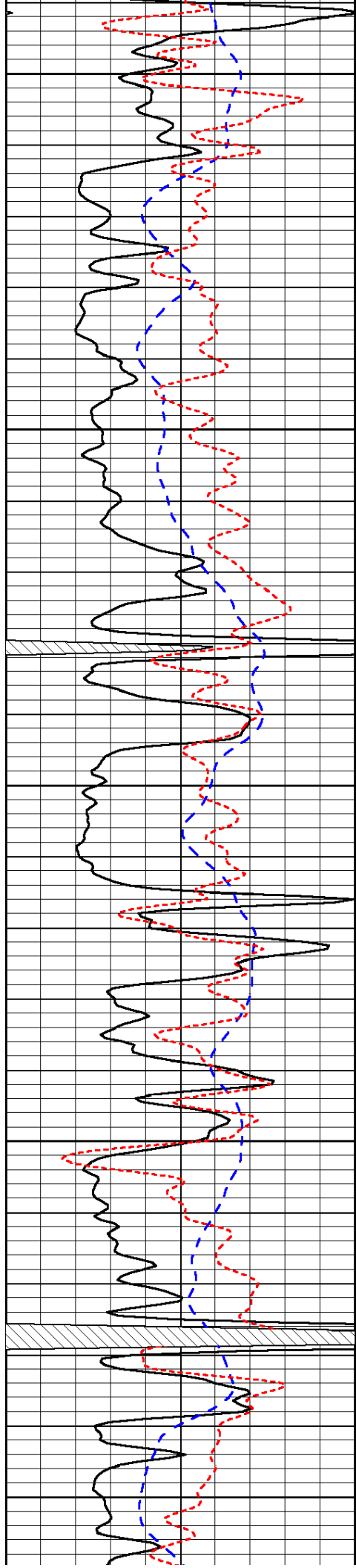


-32

-32

-32

-32



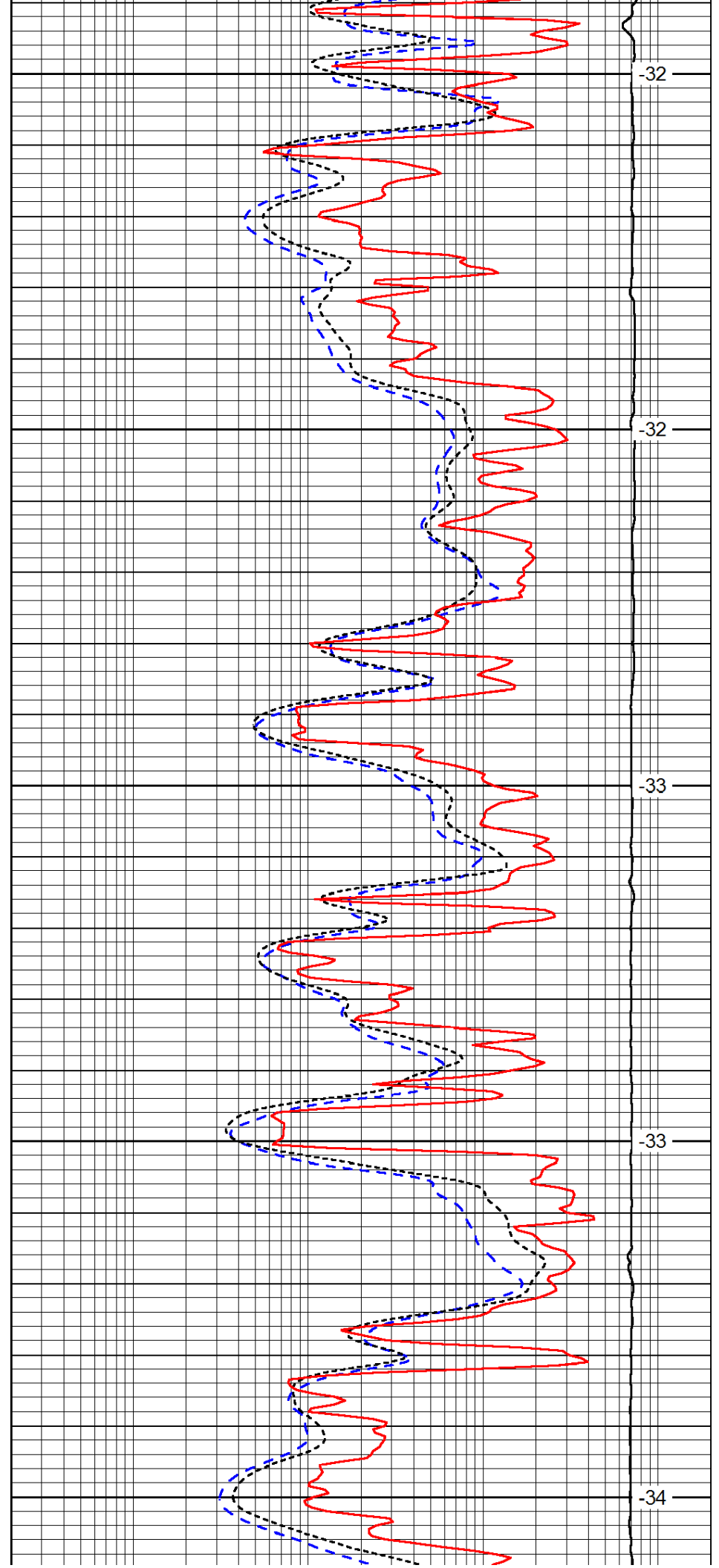
3800

3850

3900

3950

4000



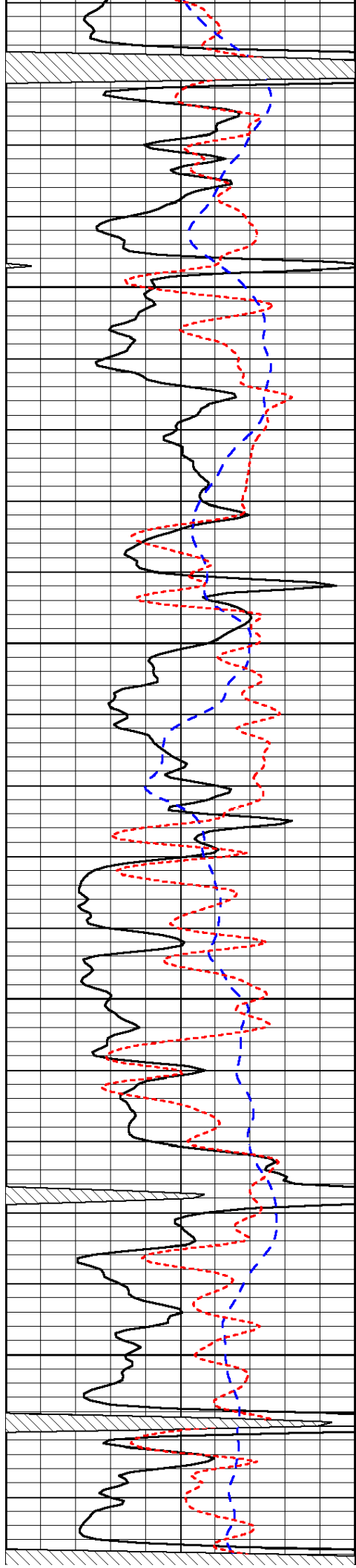
-32

-32

-33

-33

-34

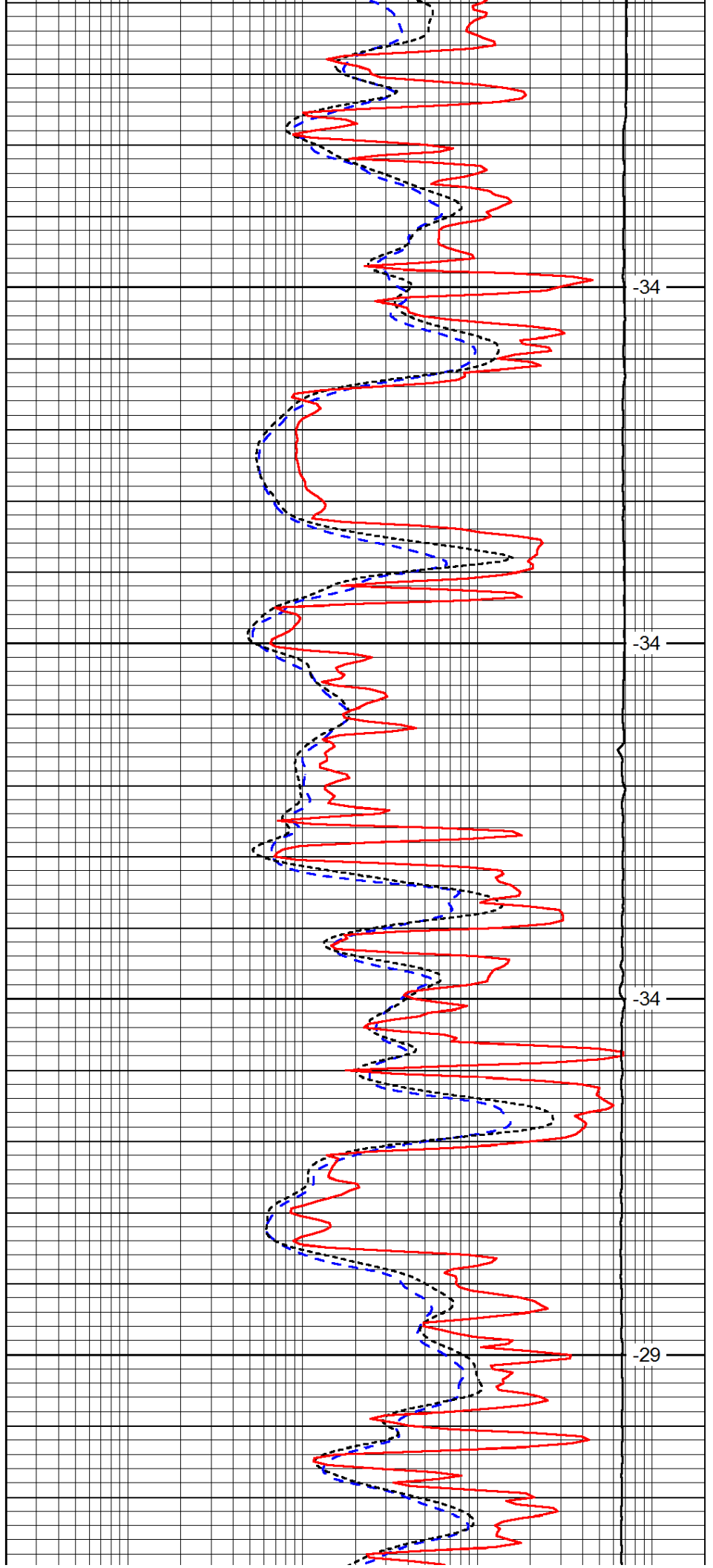


4050

4100

4150

4200

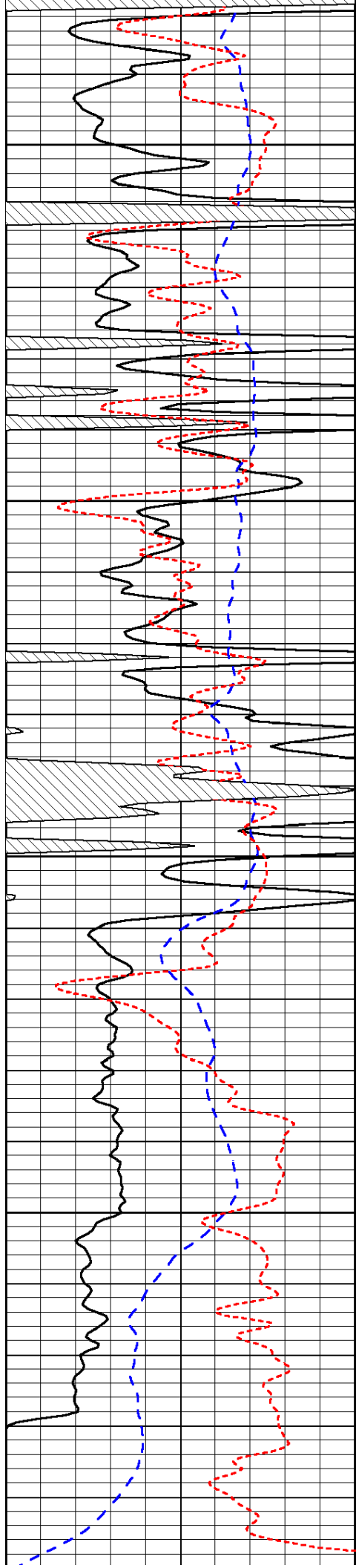


-34

-34

-34

-29



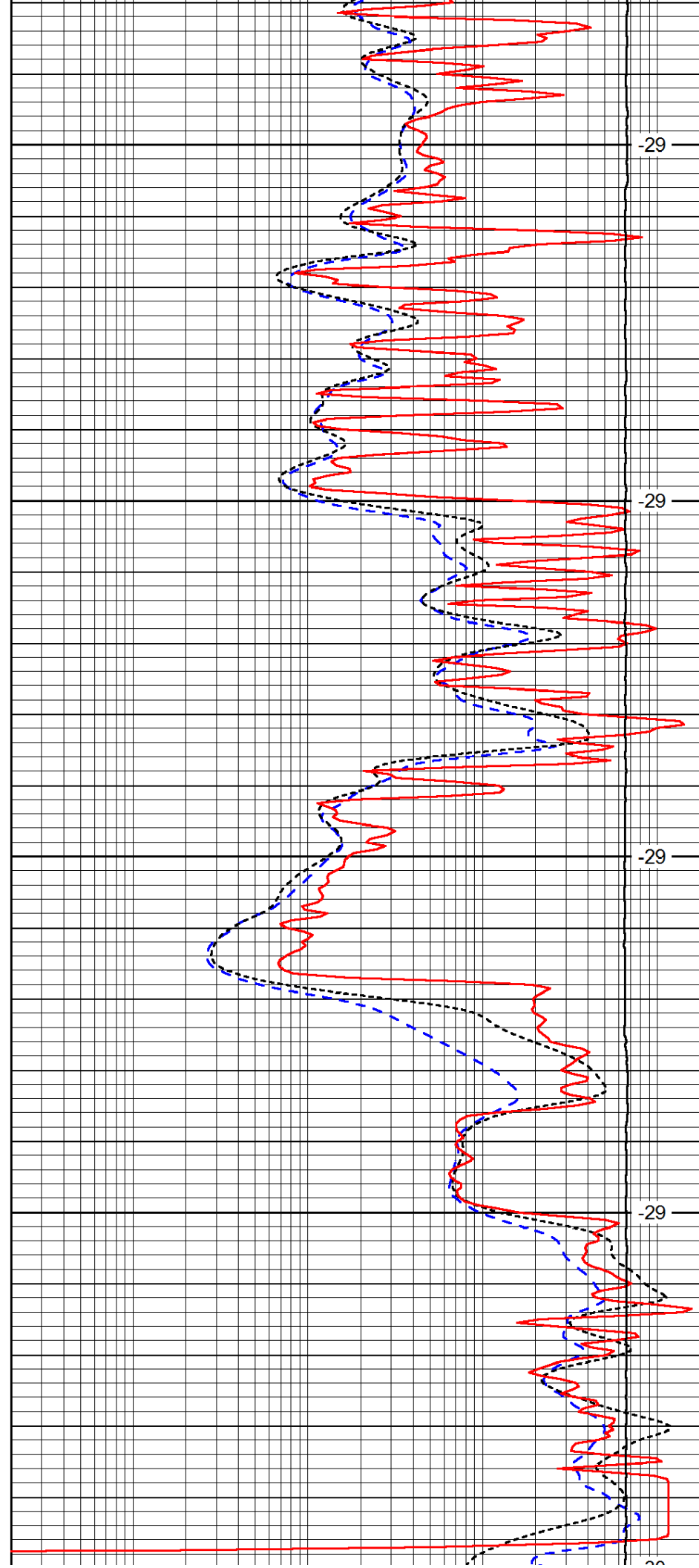
4250

4300

4350

4400

4450



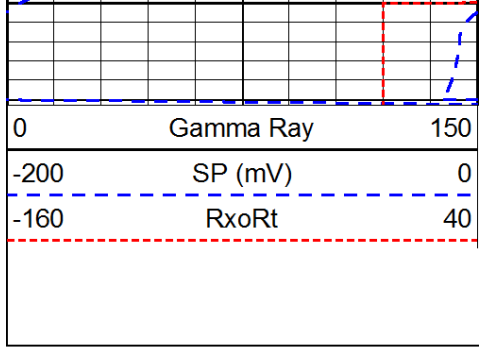
-29

-29

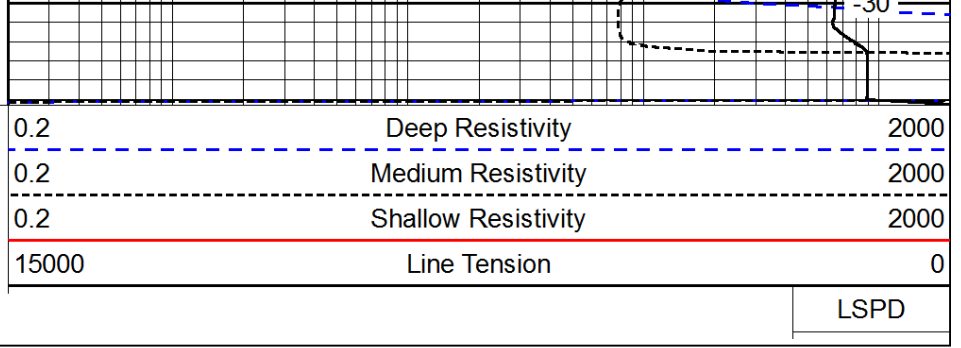
-29

-29

-29



4450



LSPD