



Pioneer Energy Services

Microresistivity Log

15-109-21,140-00-00

API No.

Company **Brito Oil Company, Inc.**
 Well **Fairleigh "F" No. 1-8**
 Field **Wildcat**
 County **Logan** State **Kansas**

Location **SW NW SE SW
 888' FSL & 1,350' FWL**

Sec: **8** Twp: **15S** Rge: **32W**

Other Services
 CNL/CDL
 DIL

Permanent Datum **Ground Level** Elevation **2740**
 Log Measured From **Kelly Bushing** 11 Ft. Above Perm. Datum
 Drilling Measured From **Kelly Bushing**

Elevation
 K.B. 2751
 D.F. 2740
 G.L. 2740

Date	12/2/2012	
Run Number	Two	
Depth Driller	4453	
Depth Logger	4453	
Bottom Logged Interval	4452	
Top Log Interval	3400	
Casing Driller	8.625 @ 223	
Casing Logger	222	
Bit Size	7.875	
Type Fluid in Hole	Chemical	
Salinity, ppm CL	4000	
Density / Viscosity	9.3 55	
pH / Fluid Loss	11.0 8.0	
Source of Sample	Flowline	
Rm @ Meas. Temp	.50 @ 64	
Rmf @ Meas. Temp	.38 @ 64	
Rmc @ Meas. Temp	.68 @ 64	
Source of Rmf / Rmc	Charts	
Rm @ BHT	.27 @ 121	
Operating Rig Time	4 Hours	
Max Rec. Temp. F	121	
Equipment Number	108	
Location	Hays	
Recorded By	J. Long	
Witnessed By	Vern Schrag	

<<< Fold Here >>>

All interpretations are opinions based on inferences from electrical or other measurements and we cannot and do not guarantee the accuracy or correctness of any interpretation, and we shall not, except in the case of gross or willful negligence on our part, be liable or responsible for any loss, costs, damages, or expenses incurred or sustained by anyone resulting from any interpretation made by any of our officers, agents or employees. These interpretations are also subject to our general terms and conditions set out in our current Price Schedule.

Comments

Thank you for using Pioneer Energy Services
 www.pioneerenergy.com
 785 625 3858

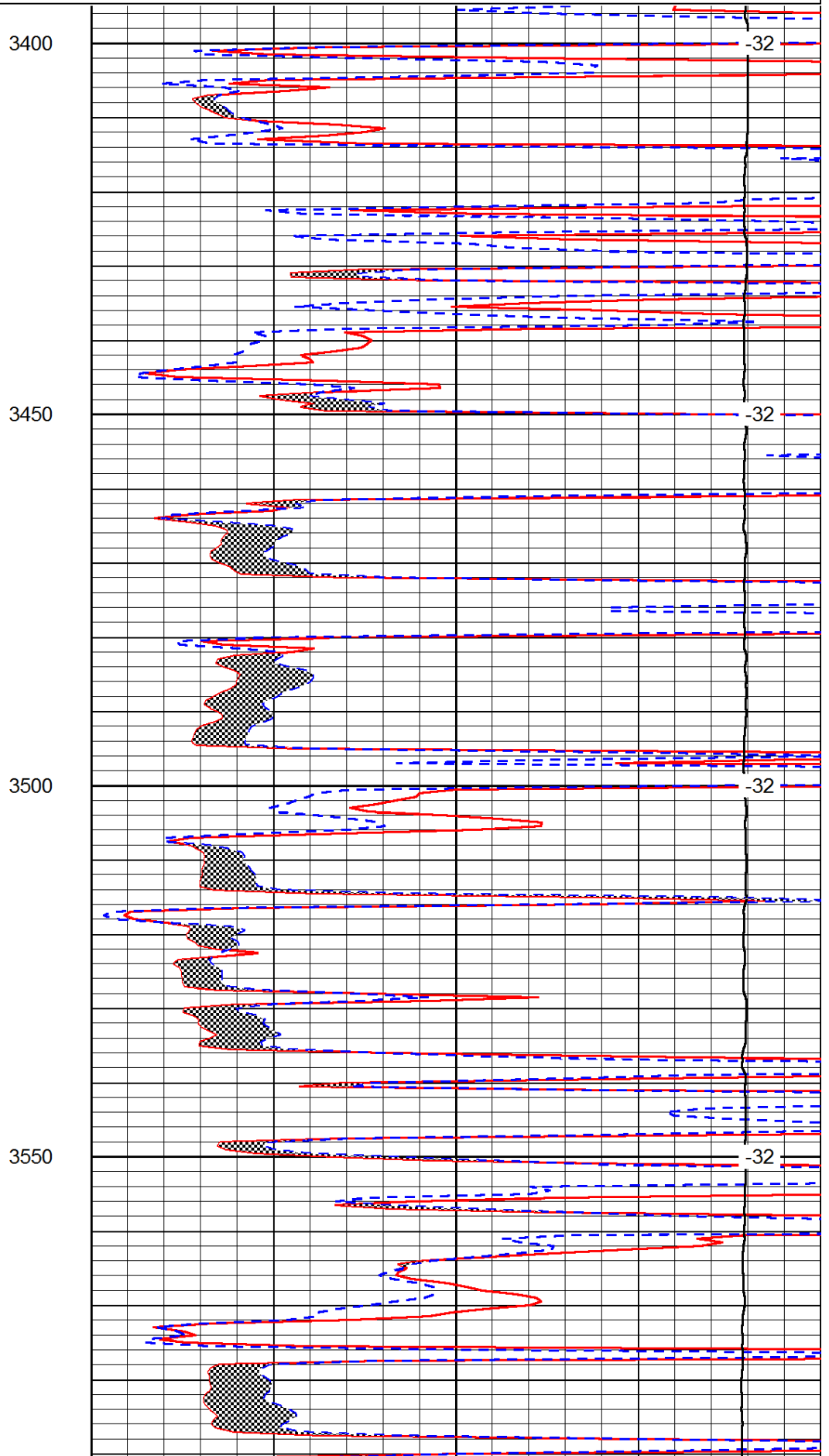
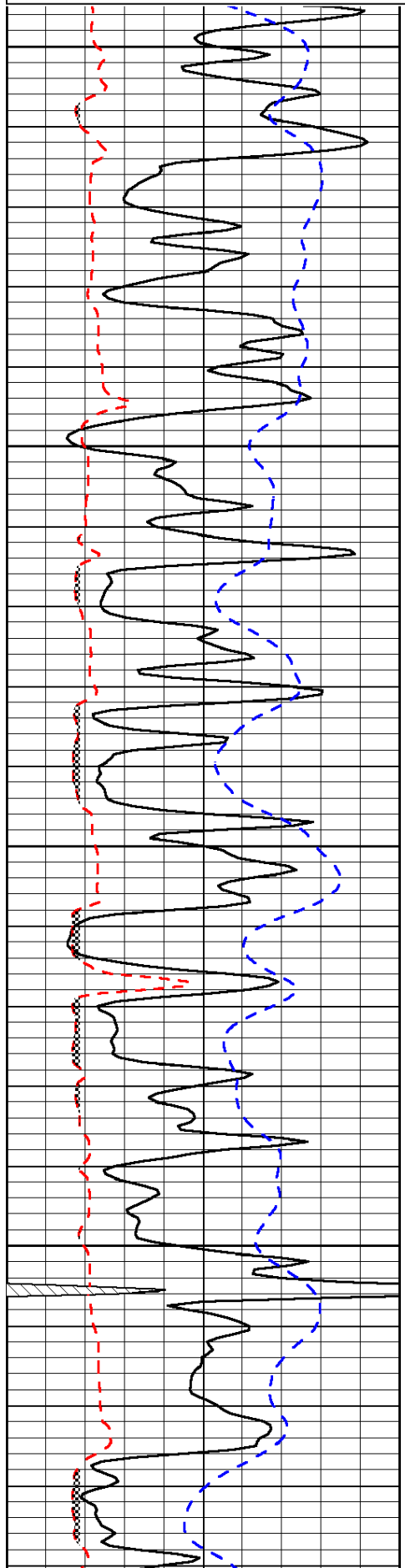
Oakley, 23 South to Gold Road, 4 1/2 West to T, 2 South to Tank Batteries, 2-3 East through double red gate, (East/Southeast through closely spaced cattle guards)

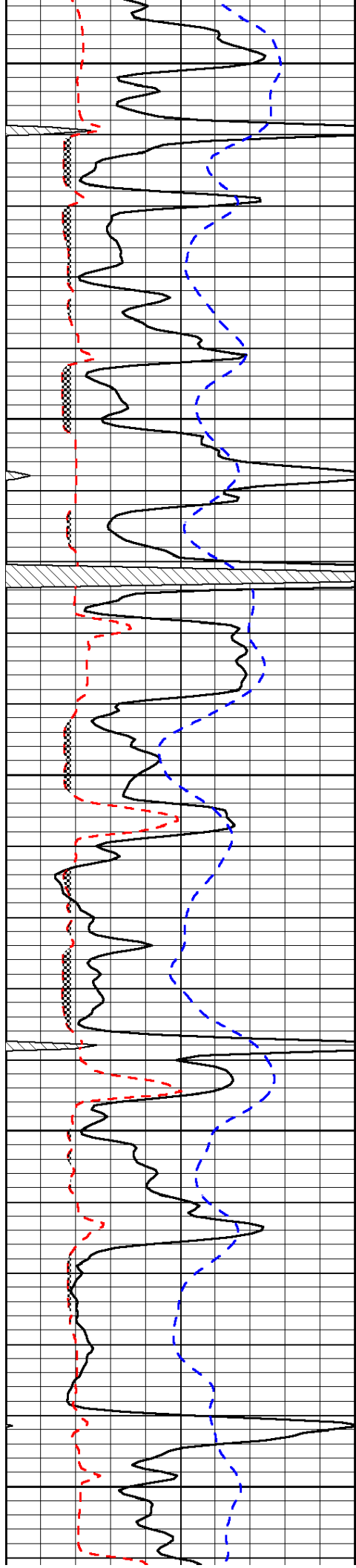
Database File: c:\warrior\data\brito_fairleigh_f #1-8\brito_fairleigh_f_1-8hd.db
 Dataset Pathname: dil/britstck
 Presentation Format: micro
 Dataset Creation: Sun Dec 02 18:36:59 2012
 Charted by: Depth in Feet scaled 1:240

0	Gamma Ray	150
6	Micro Log Caliper (GAPI)	16
-200	SP (mV)	0

0	Micro Inverse 1 X 1	40
0	Micro Normal 2"	40
15000	Line Weight	0

LSPD





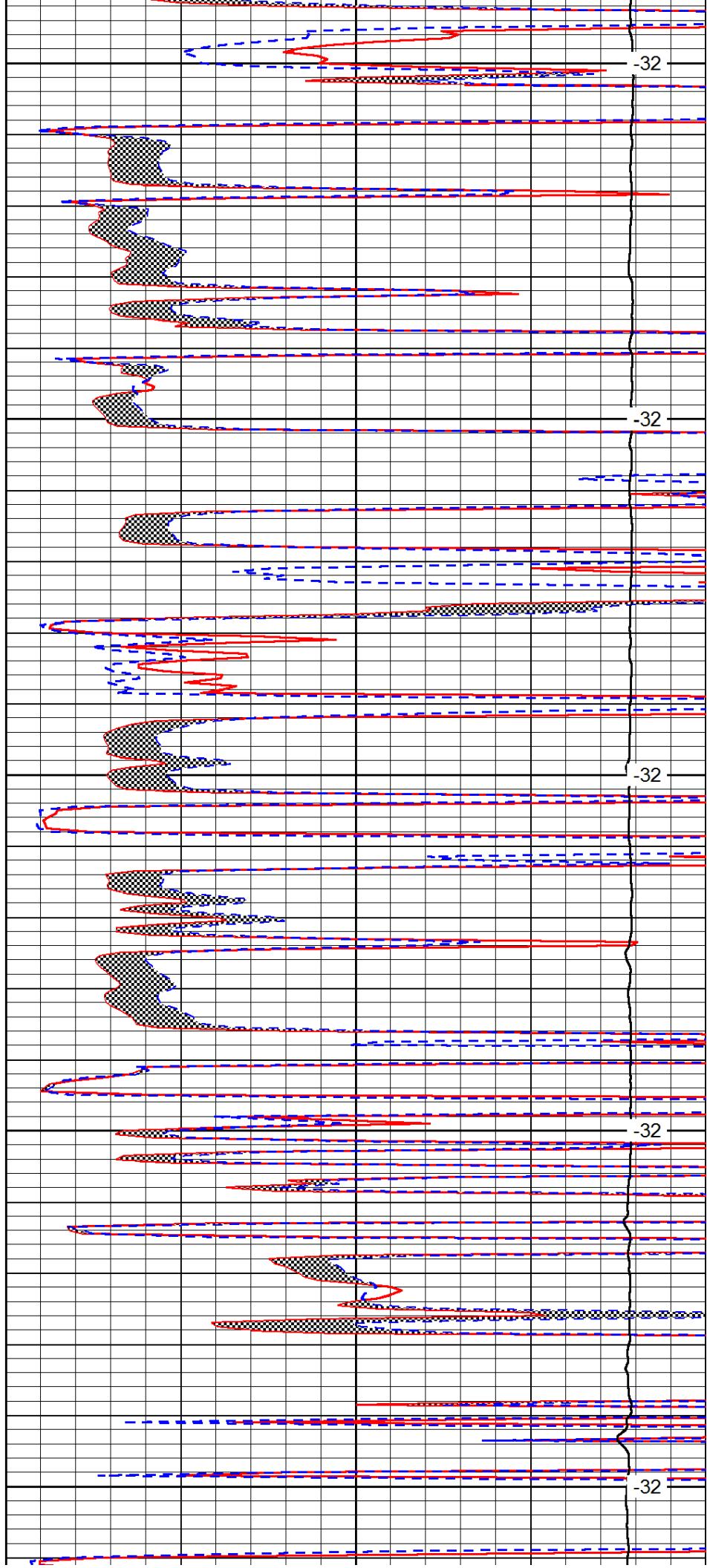
3600

3650

3700

3750

3800



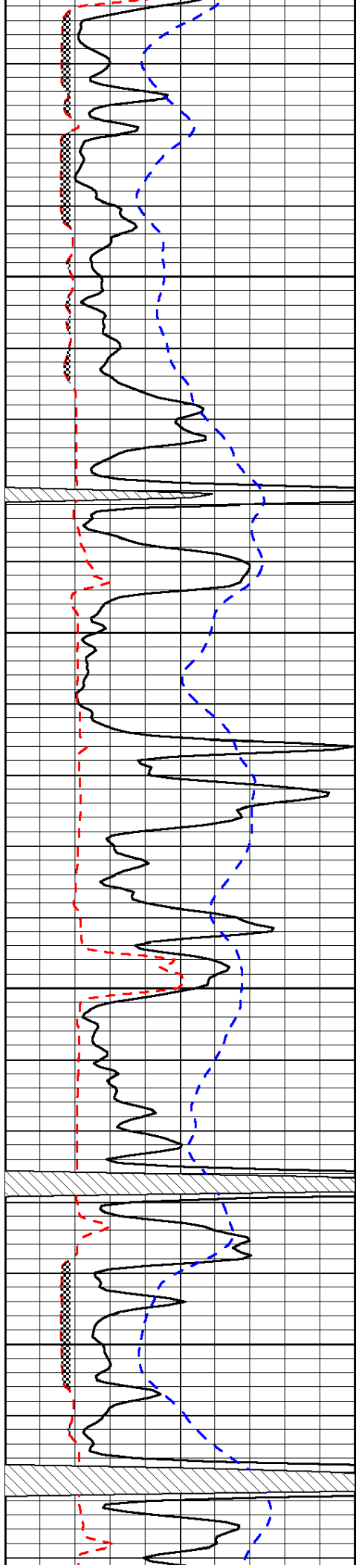
-32

-32

-32

-32

-32

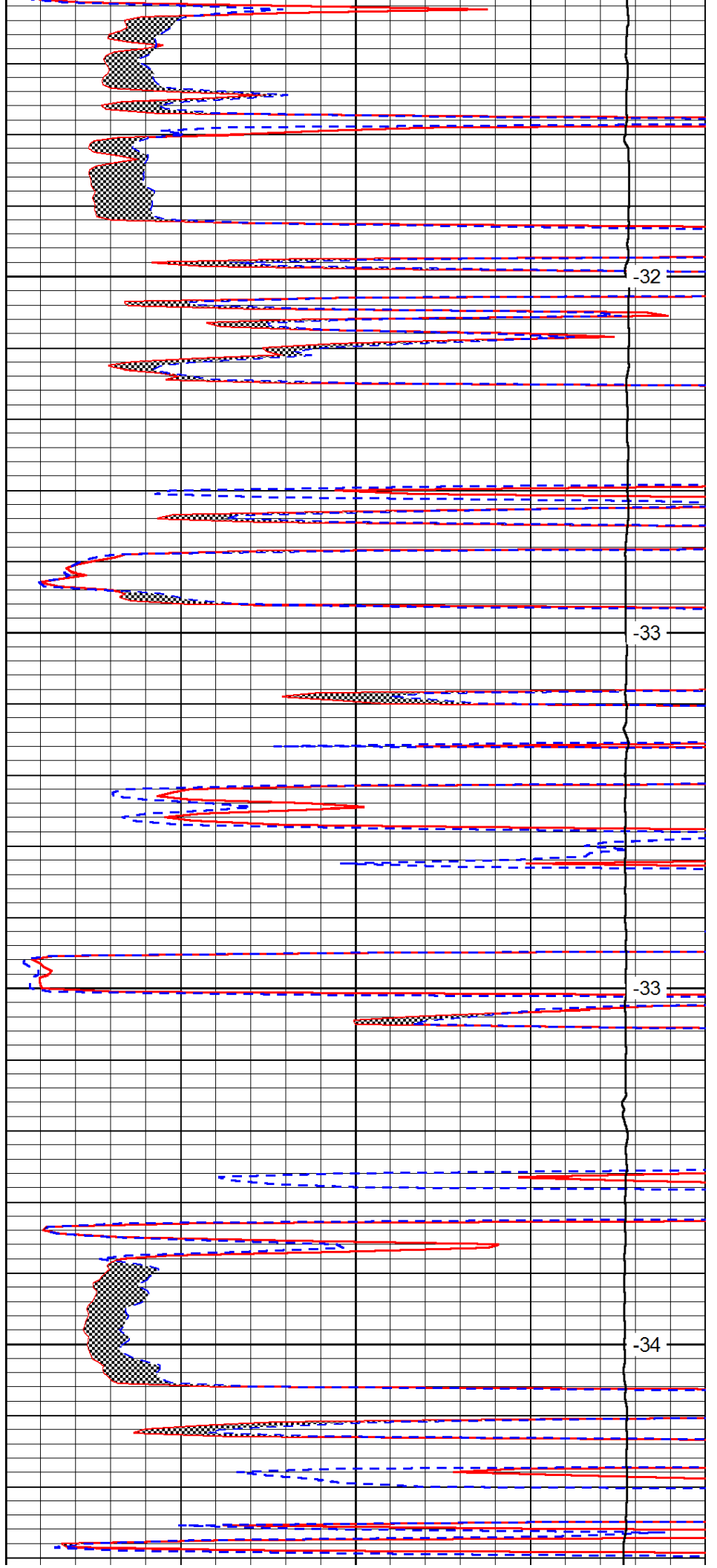


3850

3900

3950

4000

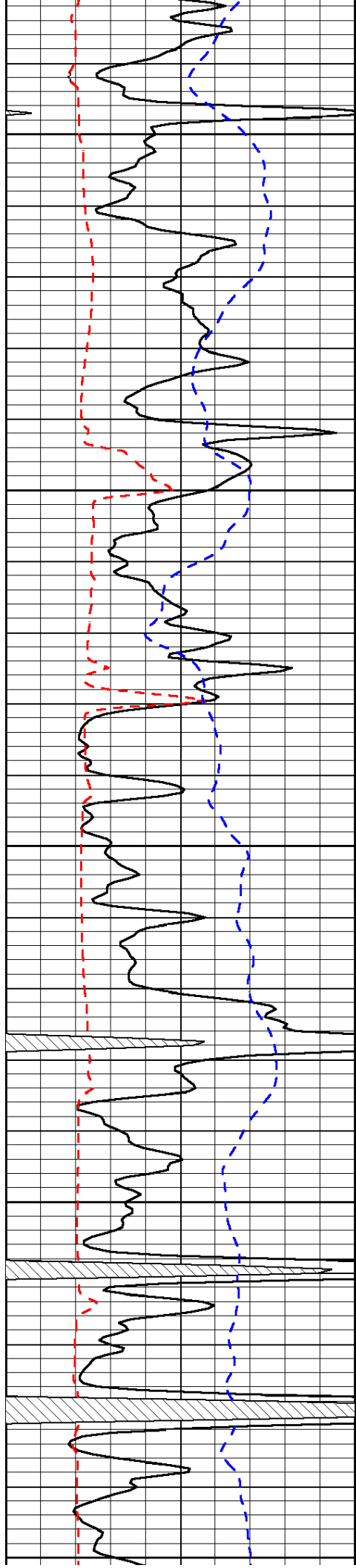


-32

-33

-33

-34



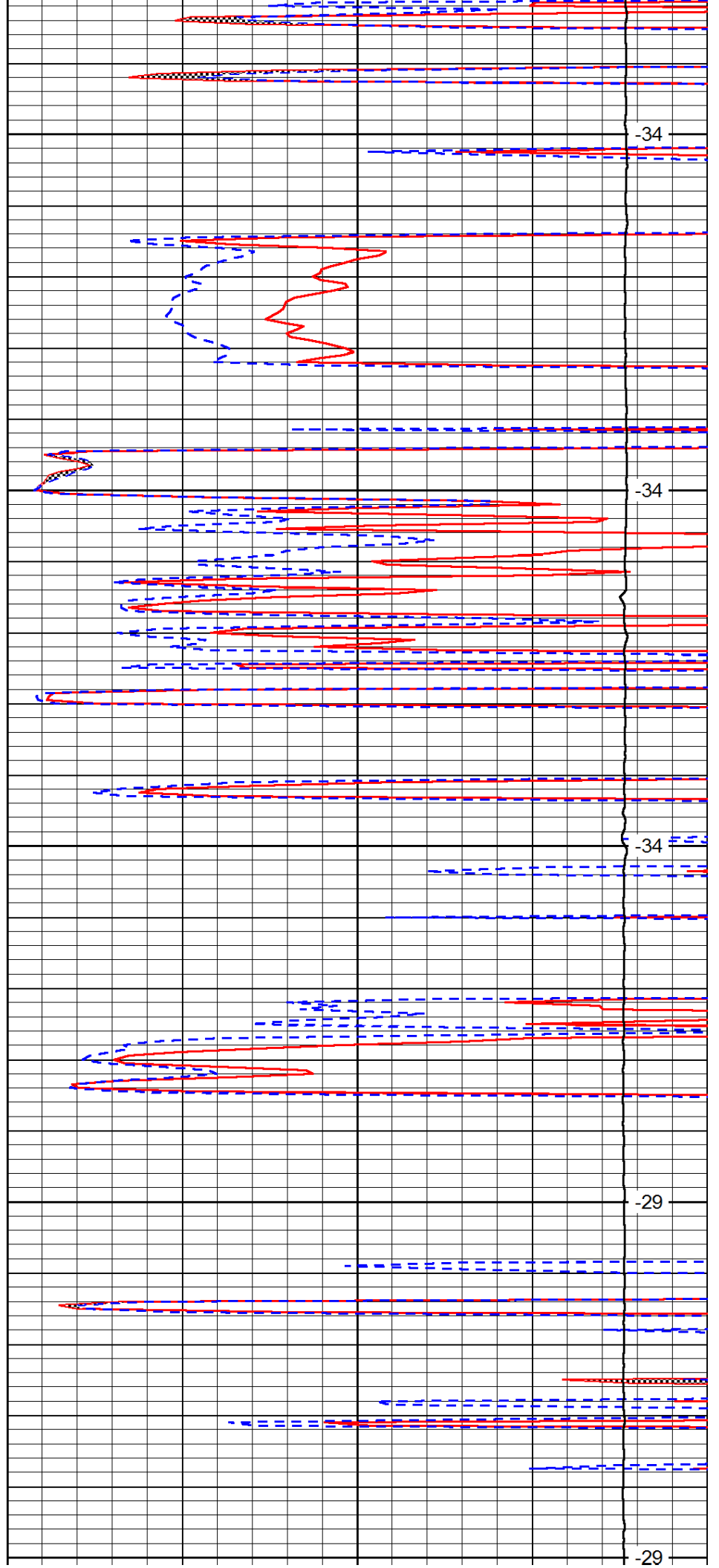
4050

4100

4150

4200

4250



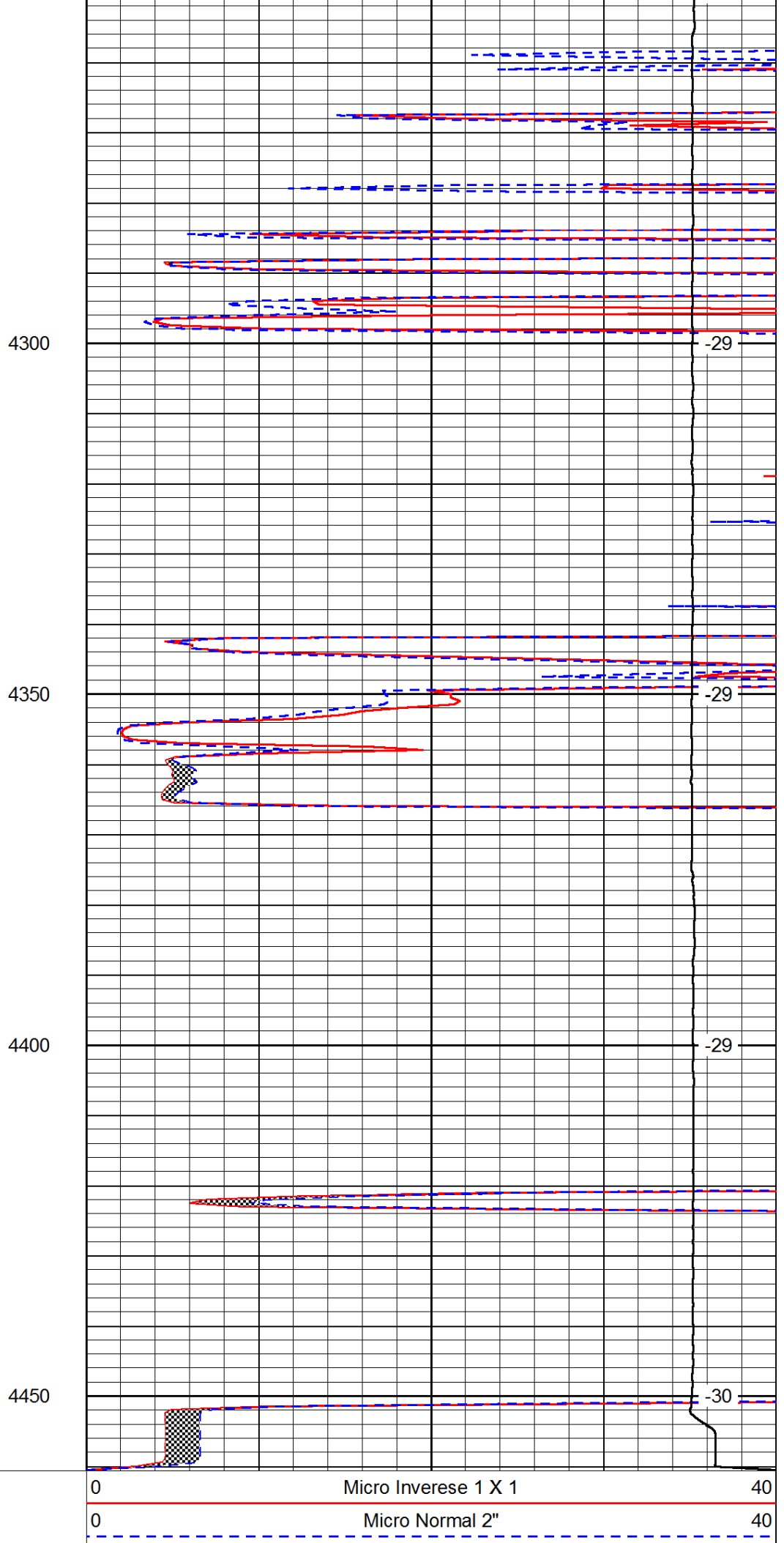
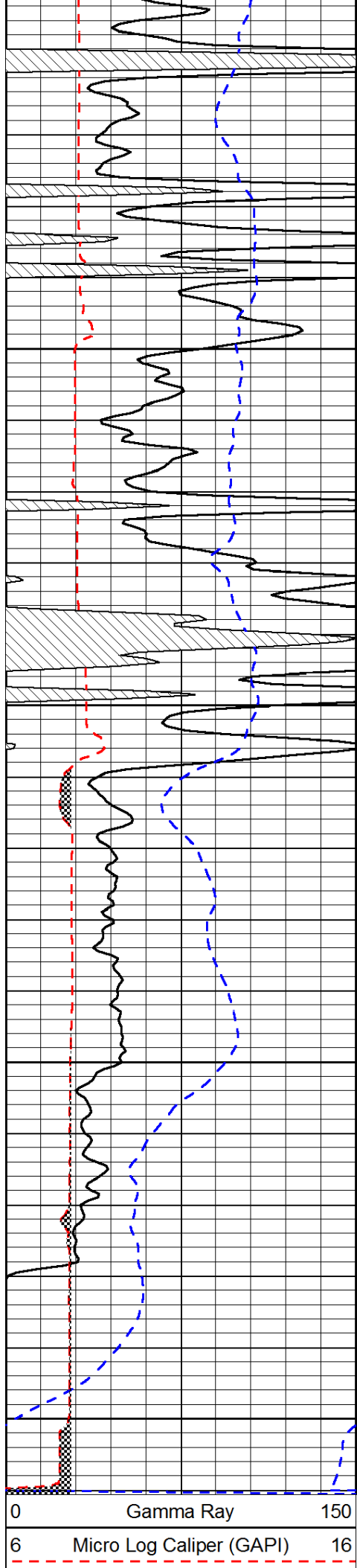
-34

-34

-34

-29

-29



-200 SP (mV) 0

15000

Line Weight

0

LSPD