



**GAMMA RAY
CEMENT BOND
COMPLETION LOG**

Company: **POSTROCK ENERGY CORP.**
Well: **GRADY, JAMES A. #5-10**
Field: **CHEROKEE BASIN CBM**
County: **WILSON** State: **KANSAS**

Location: **1395' FNL & 1425' FNL**
SEC 5 TWP 28S RGE 17E
Elevation: **979'**

Other Services: **OPEN HOLE**
Date: **3-25-2013**
Run Number: **1 NW**
Depth Logger: **1075.8'**

Company: **POSTROCK ENERGY CORP.**
Well: **GRADY, JAMES A. #5-10**
Field: **CHEROKEE BASIN CBM**
County: **WILSON** State: **KANSAS**

Location: **1395' FNL & 1425' FNL**
SEC 5 TWP 28S RGE 17E
Elevation: **979'**

Other Services: **OPEN HOLE**
Date: **3-25-2013**
Run Number: **1 NW**
Depth Logger: **1075.8'**

Production Casing: **5" @ TD**
Max. Recorded Temp.:
Estimated Cement Top:
Calculated Cement Top:
Amount & Type Admix:
Drilling Contractor:
Equipment Number: **105**
Location:
Recorded By: **GONMALEY R**
Witnessed By: **MICHELS J.**

Top Log Interval: **0**
Bottom Logged Interval: **1071.8'**
Fluid Level: **FULL**
Type Fluid: **WATER**

<<< Fold Here >>>

All interpretations are opinions based on inferences from electrical or other measurements and we cannot and do not guarantee the accuracy or correctness of any interpretation, and we shall not, except in the case of gross or willful negligence on our part, be liable or responsible for any loss, costs, damages, or expenses incurred or sustained by anyone resulting from any interpretation made by any of our officers, agents or employees. These interpretations are also subject to our general terms and conditions set out in our current Price Schedule.

Comments

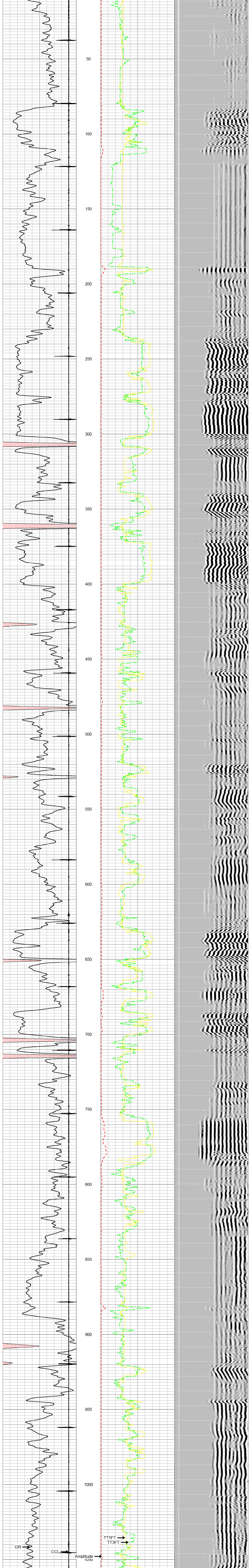
THANK YOU

Sensor	Offset (ft)	Schematic	Description	Len (ft)	OD (in)	Wt (lb)
			tekco tekco cent.	2.17	1.69	5.00
WVF3FT	6.58		CBLTEKCO-TEKCO2RCVR (TEKCO169) 1 1/16" TEKCO 2 RCVR DELWARE	9.75	1.69	50.00
WVF5FT	5.58					
WVFCAL	2.17		tekco tekco cent.	2.17	1.69	5.00
WVFSYNC	2.17					

Dataset: grady james a #5-10 db: field/well/run1/pass2merge
Total Length: 14.08 ft
Total Weight: 60.00 lb
O.D.: 1.69 in

Database File: grady james a #5-10.db
Dataset Pathname: pass2merge
Presentation Format: scbl_dr
Dataset Creation: Tue Mar 26 10:11:05 2013
Charted by: Depth in Feet scaled 1.240

9	CCL	-1	0	Amplitude (mV)	150	250	VDL	1200
0	GR	150	1100	TT3FT (usec)	200			
150	gr	300	1800	TT5FT (usec)	200			



9	CCL	-1	0	Amplitude (mV)	150	250	VDL	1200
0	GR	150	1100	TT3FT (usec)	200			
150	gr	300	1800	TT5FT (usec)	200			

	Company	POSTROCK ENERGY CORP.
	Well	GRADY, JAMES A. #5-10
	Field	CHEROKEE BASIN CBM
	County	WILSON SECTION 5 T3WP 28S RGE 17E
	State	KANSAS
	Date	3-25-2013