



**GAMMA RAY
CEMENT BOND
COMPLETION LOG**

Company **POSTROCK ENERGY CORP.**
Well **GROSDIDIER, FRANCIS E. #14-2**
Field **CHEROKEE BASIN CBM**
County **NEOSHO** State **KANSAS**

Location: **API # : 15-133-27641-00-00**
2435 FSL & 90 FWL
NW NW NW SW
SEC 14 TWP 28S RGE 20E
Permanent Datum **GL** Elevation **913'**
Log Measured From **GL**
Drilling Measured From **GL**
Date **3-21-2013**

| | | | |
|------------------------|------------|----------------|-----------|
| Run Number | 1 NW | Other Services | OPEN HOLE |
| Depth Driller | 631' | 3-13-2013 | |
| Depth Logger | 627'-1" | | |
| Top Log Interval | 0 | | |
| Bottom Logged Interval | 627'-1" | | |
| Fluid Level | FULL | | |
| Fluid Level | FULL | | |
| Type Fluid | WATERS | | |
| Production Casing | 5" @ TD | | @ |
| Max. Recorded Temp. | | | |
| Estimated Cement Top | | | |
| Calculated Cement Top | | | |
| Amount & Type Cement | | | |
| Dilling Contractor | | | |
| Equipment Number | 105 | | |
| Location | GORRILEY R | | |
| Recorded By | MICHELS J | | |
| Witnessed By | | | |

<<< Fold Here >>>

All interpretations are opinions based on inferences from electrical or other measurements and we cannot and do not guarantee the accuracy or correctness of any interpretation, and we shall not, except in the case of gross or willful negligence on our part, be liable or responsible for any loss, costs, damages, or expenses incurred or sustained by anyone resulting from any interpretation made by any of our officers, agents or employees. These interpretations are also subject to our general terms and conditions set out in our current Price Schedule.

Comments

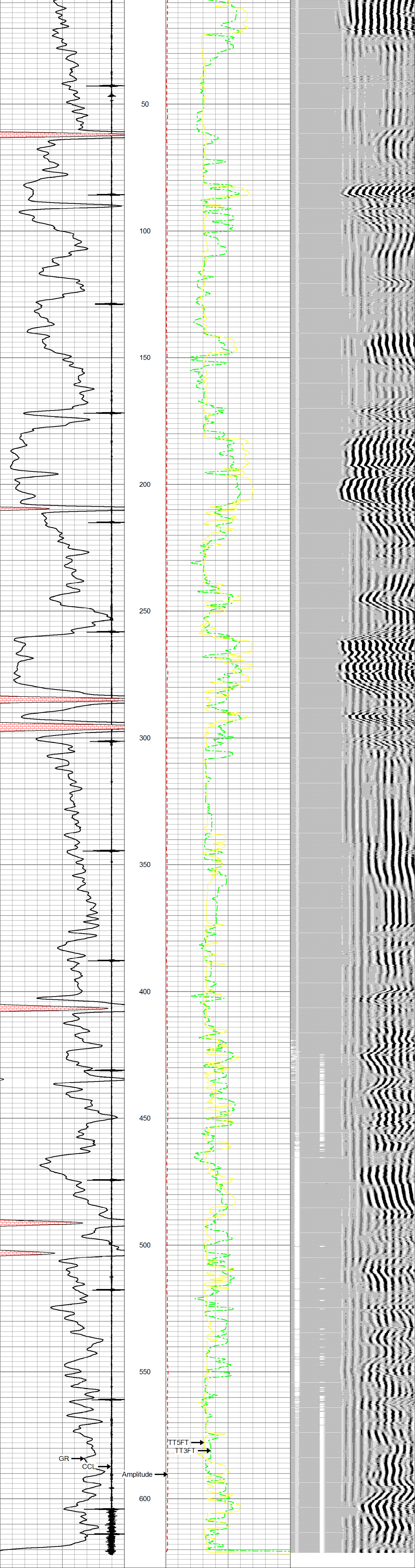
THANK YOU

| Sensor | Offset (ft) | Schematic | Description | Len (ft) | OD (in) | Wt (lb) |
|---------|-------------|-----------|---|----------|---------|---------|
| | | | tekco tekco cent. | 2.17 | 1.69 | 5.00 |
| WVF3FT | 6.58 | | CBLTEKCO-TEKCO2RCVR (TEKCO169) 1 11/16" TEKCO 2 RCVR DELWARE | 9.75 | 1.69 | 50.00 |
| WVF5FT | 5.58 | | | | | |
| WVFCAL | 2.17 | | | | | |
| WVFSYNC | 2.17 | | | | | |
| | | | tekco tekco cent. | 2.17 | 1.69 | 5.00 |

Dataset: grosdidier francis e #14-2db.db: field/well/run1/pass2MERGE
Total Length: 14.08 ft
Total Weight: 60.00 lb
O.D.: 1.69 in

Database File: grosdidier francis e #14-2db.db
Dataset Pathname: pass2MERGE
Presentation Format: scbl_dr
Dataset Creation: Thu Mar 21 13:29:05 2013
Charted by: Depth in Feet scaled 1:240

| | | | | | | | | |
|-----|-----|-----|------|----------------|-----|-----|-----|------|
| 9 | CCL | -1 | 0 | Amplitude (mV) | 150 | 250 | VDL | 1200 |
| 0 | GR | 150 | 1100 | TT3FT (usec) | 200 | | | |
| 150 | gr | 300 | 1800 | TT5FT (usec) | 200 | | | |



| | | | | | | | | |
|-----|-----|-----|------|----------------|-----|-----|-----|------|
| 9 | CCL | -1 | 0 | Amplitude (mV) | 150 | 250 | VDL | 1200 |
| 0 | GR | 150 | 1100 | TT3FT (usec) | 200 | | | |
| 150 | gr | 300 | 1800 | TT5FT (usec) | 200 | | | |



Company **POSTROCK ENERGY CORP.**
Well **GROSDIDIER, FRANCIS E. #14-2**
Field **CHEROKEE BASIN CBM**
County **NEOSHO SECTION 14 TWP 28E RGE 20E**
State **KANSAS** Date **3-21-2013**