



**COMPLETION
& PRODUCTION
SERVICES CO.**

**DUAL RECEIVER
CEMENT BOND LOG**

Company DEUTSCHER OIL OPERATIONS
Well ARMBRISTER #1-27
Field
County ELLIS State KANSAS

Location: API # : 15-051-26527-0000 Other Services
PERF.

SEC 27 TWP 12S RGE 20W
Permanent Datum GROUND LEVEL Elevation 2205
Log Measured From KELLY BUSHING 5' A.G.L.
Drilling Measured From KELLY BUSHING
Elevation
K.B. 2210
D.F. 2208
G.L. 2205

Date	8/19/2013
Run Number	ONE
Depth Driller	3968
Depth Logger	1595
Bottom Logged Interval	1594
Top Log Interval	0
Open Hole Size	7 7/8
Type Fluid	WATER
Density / Viscosity	
Max. Recorded Temp.	
Estimated Cement Top	
Time Well Ready	
Time Logger on Bottom	7:47
Equipment Number	HAYS,KANSAS
Location	R.SMITH
Recorded By	
Witnessed By	

Borehole Record		Tubing Record					
Run Number	Bit	From	To	Size	Weight	From	To

Casing Record	Size	Wgt/Ft	Top	Bottom
Surface String	8 5/8		0	200
Prot. String				
Production String	5 1/2			
Liner				

<<< Fold Here >>>

All interpretations are opinions based on inferences from electrical or other measurements and we cannot and do not guarantee the accuracy or correctness of any interpretation, and we shall not, except in the case of gross or willful negligence on our part, be liable or responsible for any loss, costs, damages, or expenses incurred or sustained by anyone resulting from any interpretation made by any of our officers, agents or employees. These interpretations are also subject to our general terms and conditions set out in our current Price Schedule.

Comments

THANK YOU FOR USING NABORS COMPLETION & PRODUCTION SERVICES COMPANY
HAYS,KANSAS (785) 628-6395
DIRECTIONS
ELLIS,KS. N. TO LOCUST GROVE RD. 2 E. - 1/4 S. - W. INTO

Database File: 11570grb.db
Dataset Pathname: pass2.1
Presentation Format: dobl02
Dataset Creation: Mon Aug 19 09:30:32 2013 by Calc Std Casedhole 08121
Charted by: Depth in Feet scaled 1:240

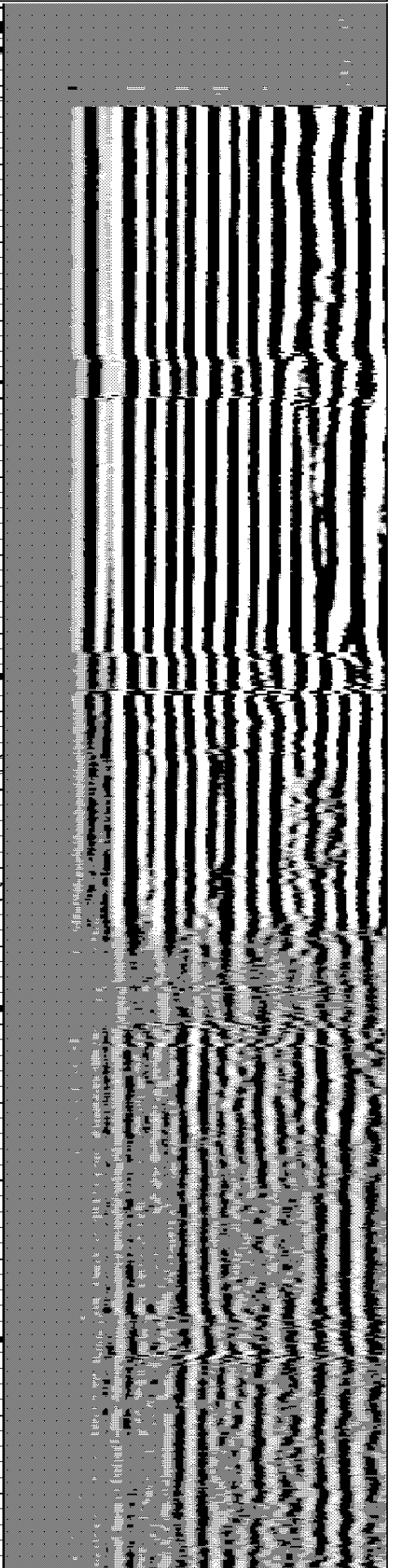
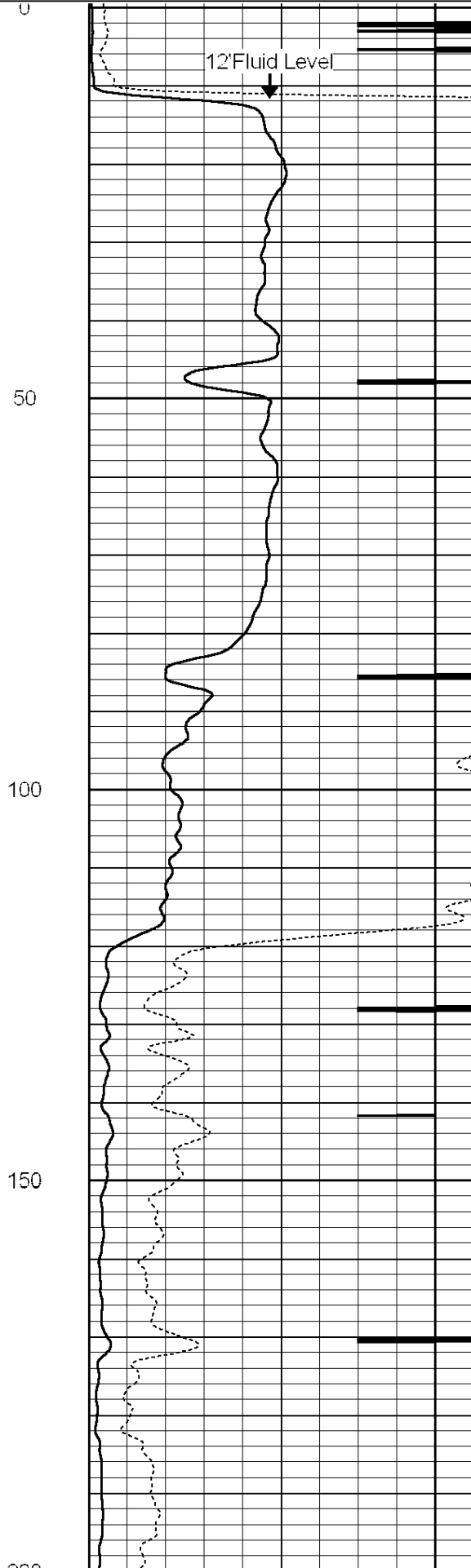
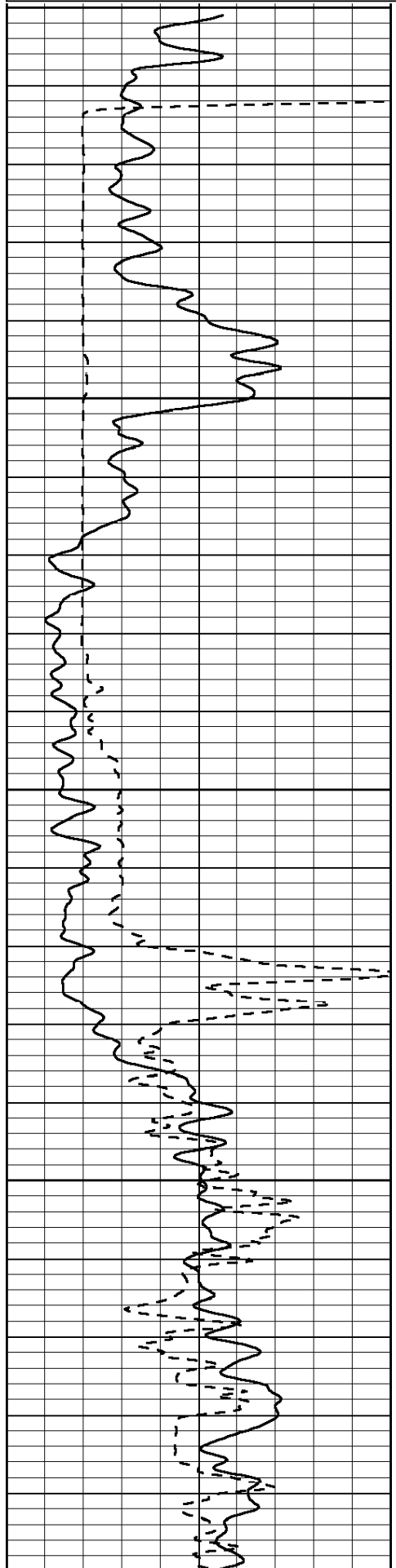
Charted by:

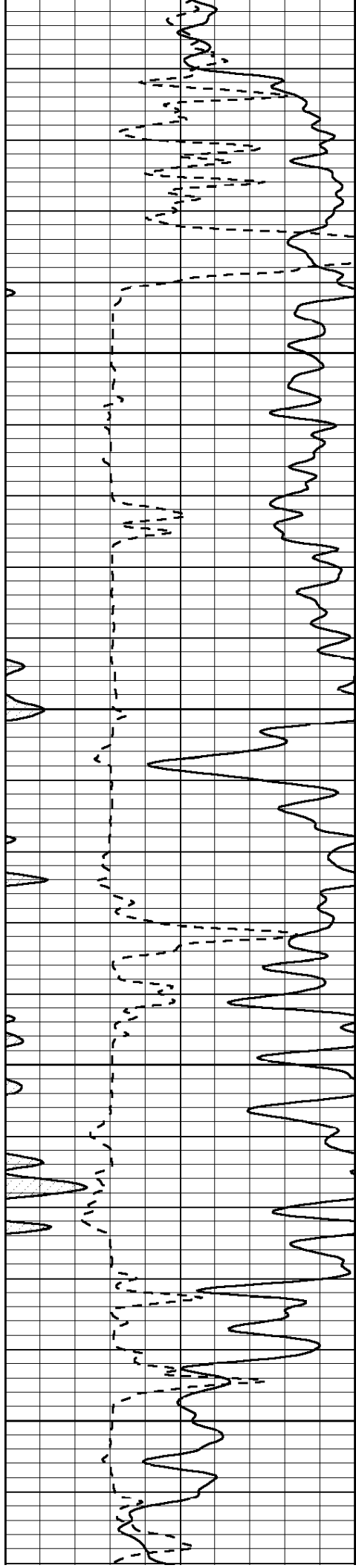
Depth (ft) not scaled 1:2 to

0	Gamma Ray (GAPI)	150
210	5' Travel Time (usec)	1000

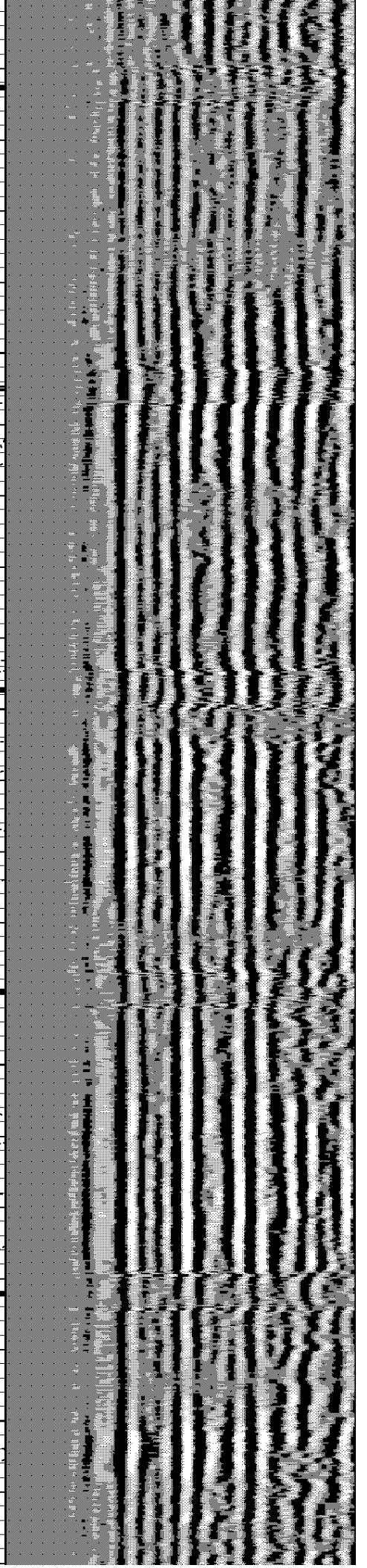
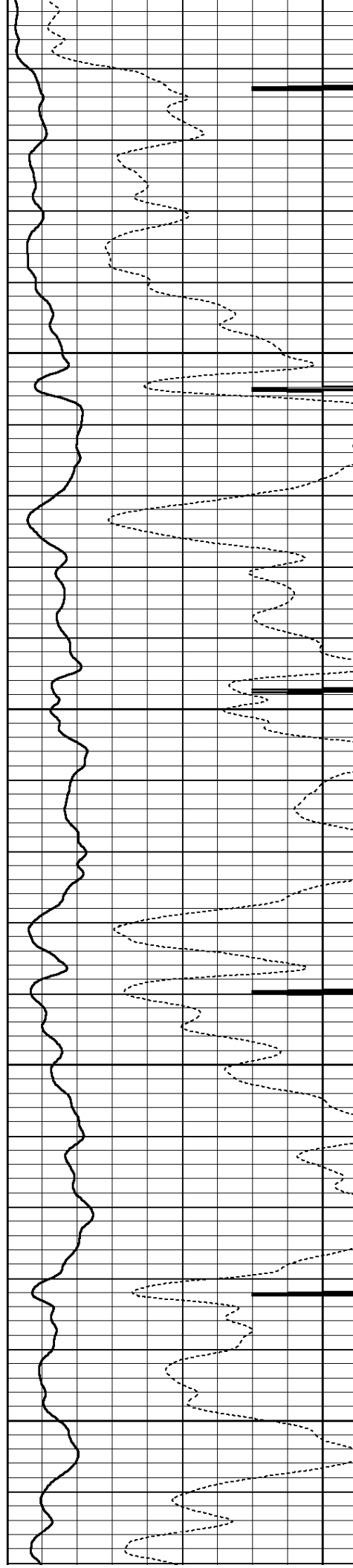
0	3' Amplitude (mV)	100
9	CCL	-1
0	Amplified Amplitude (mV)	20

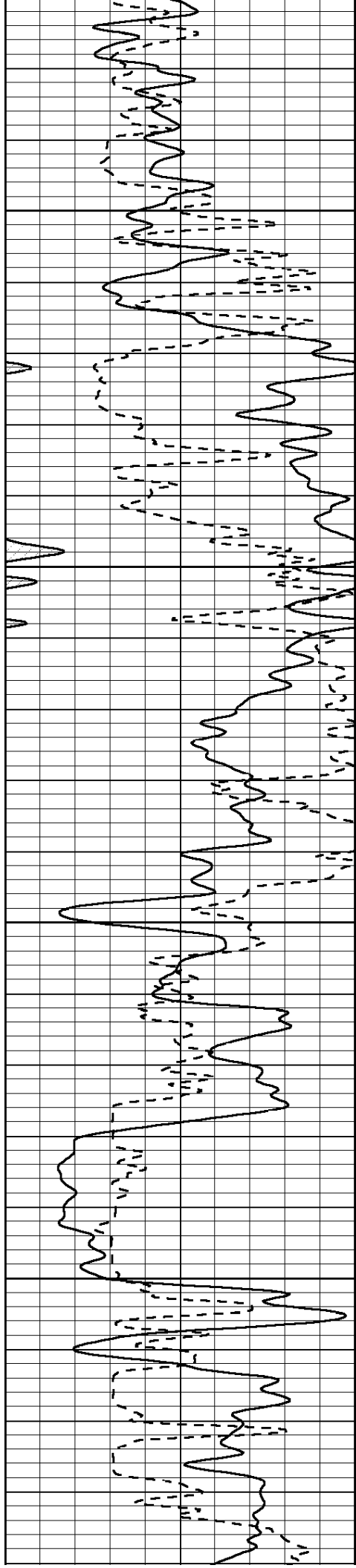
200	5FT VDL	1000
-----	---------	------





200
250
300
350
400



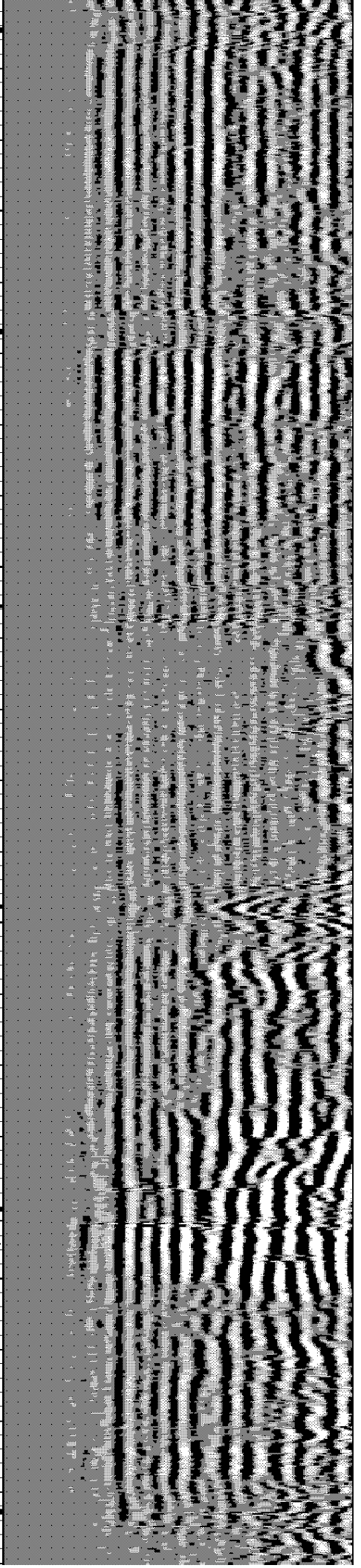
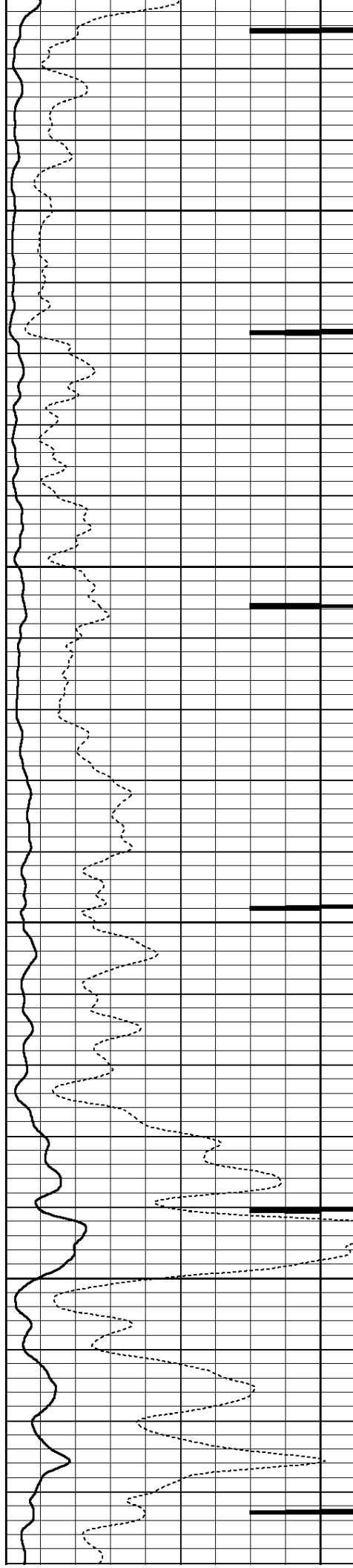


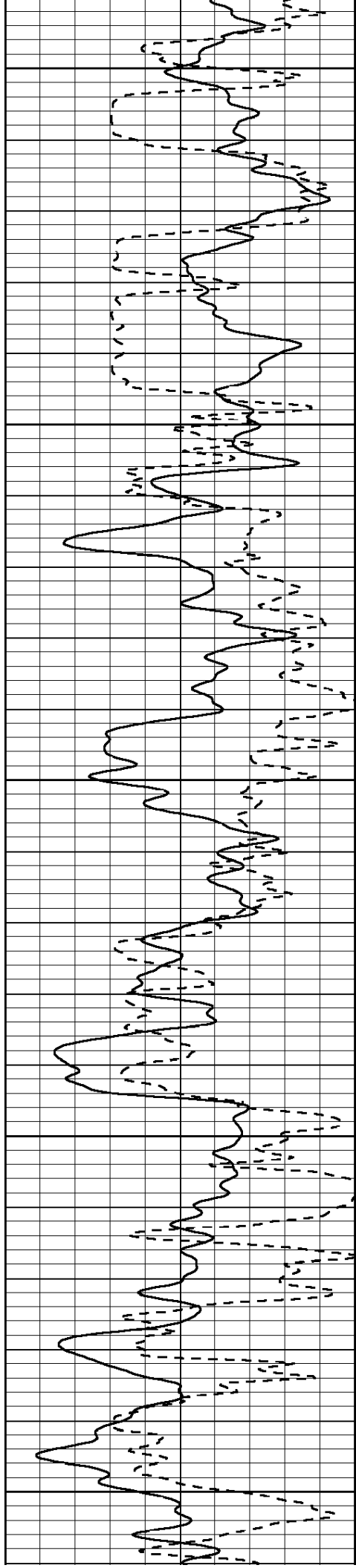
450

500

550

600





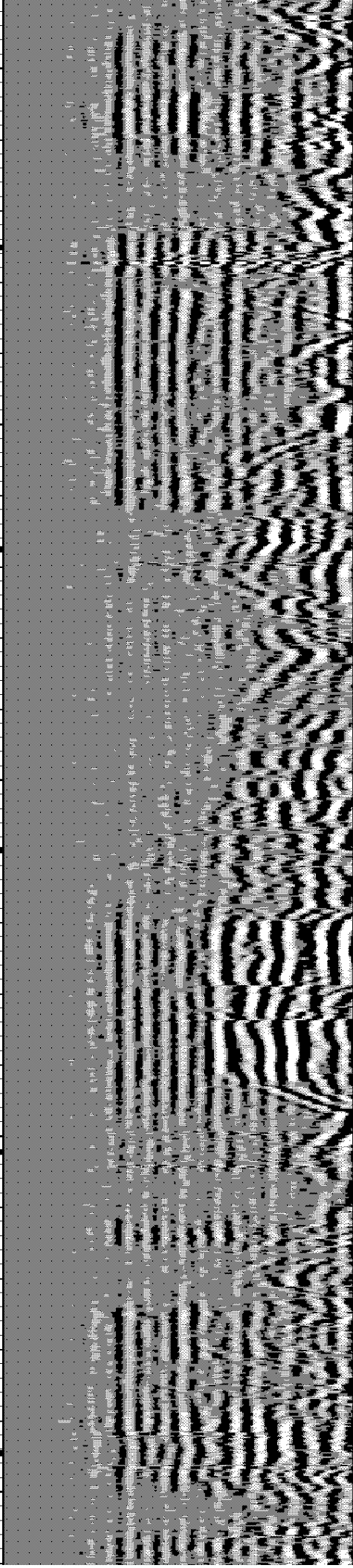
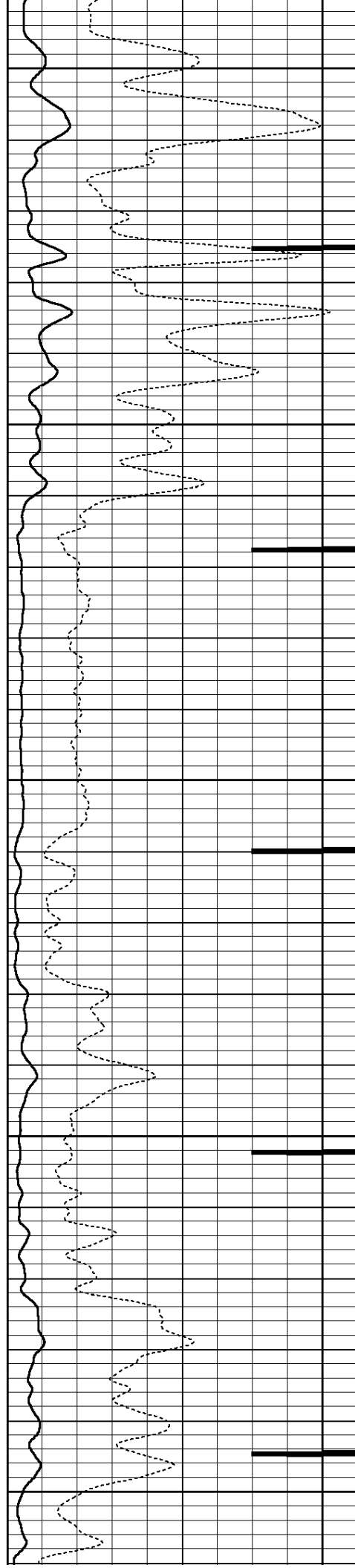
650

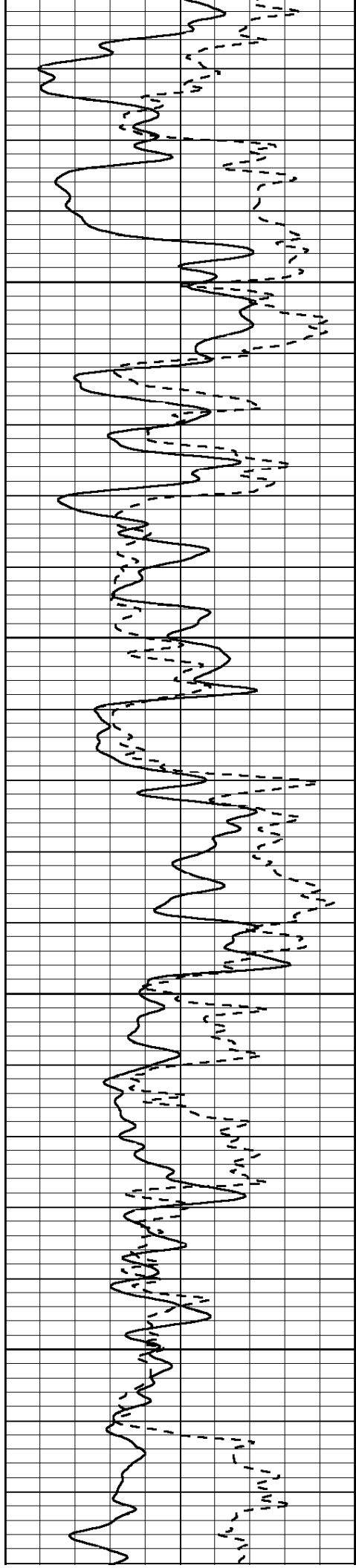
700

750

800

850



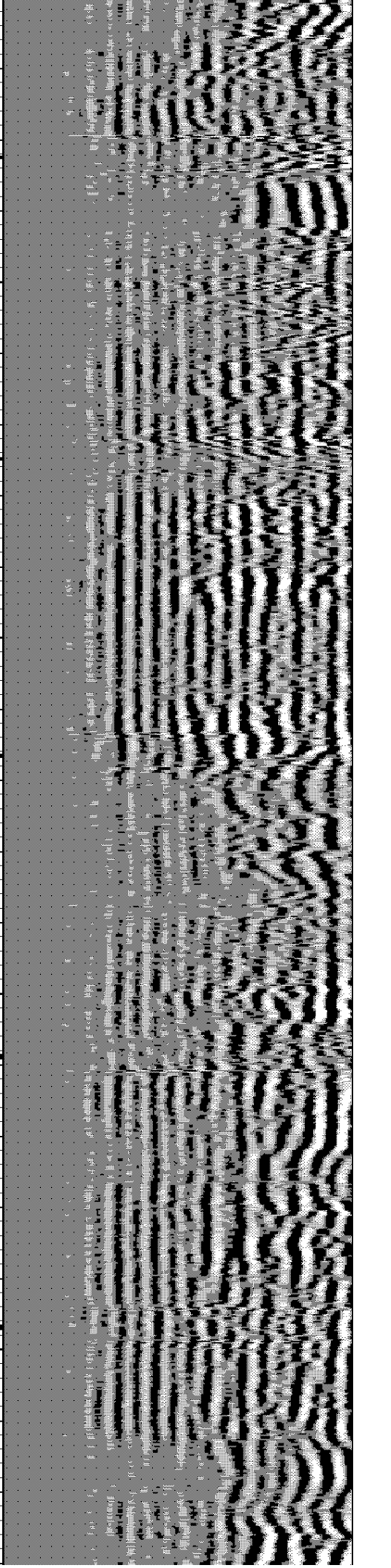
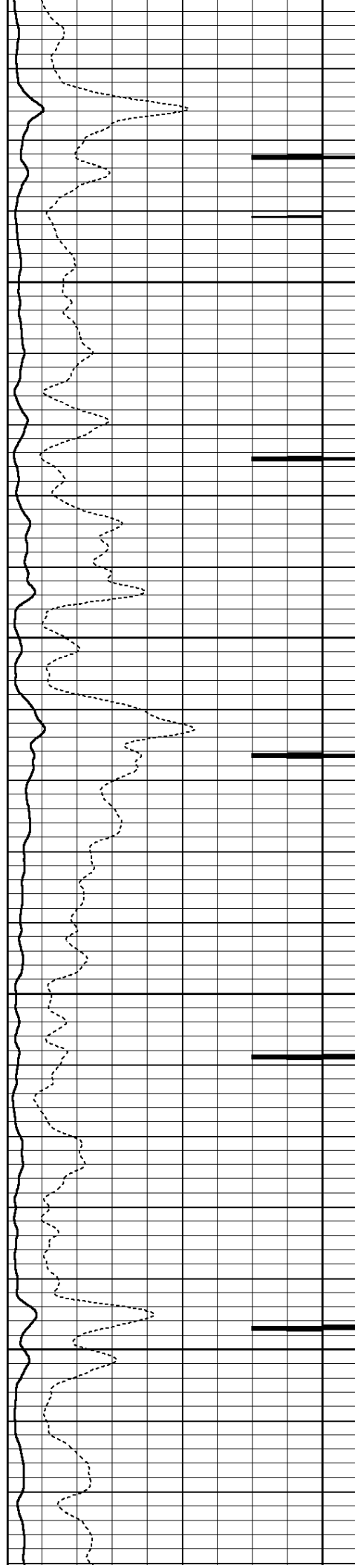


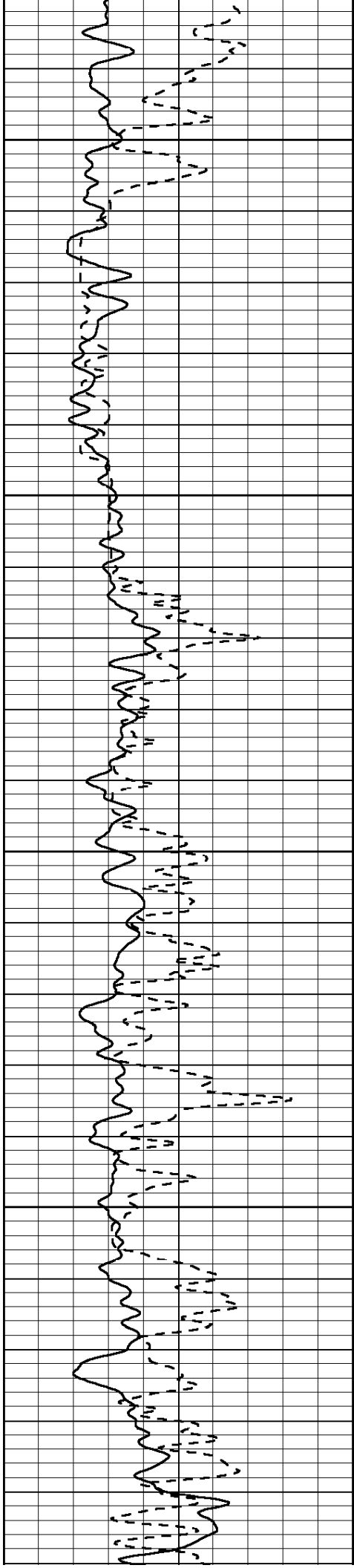
900

950

1000

1050





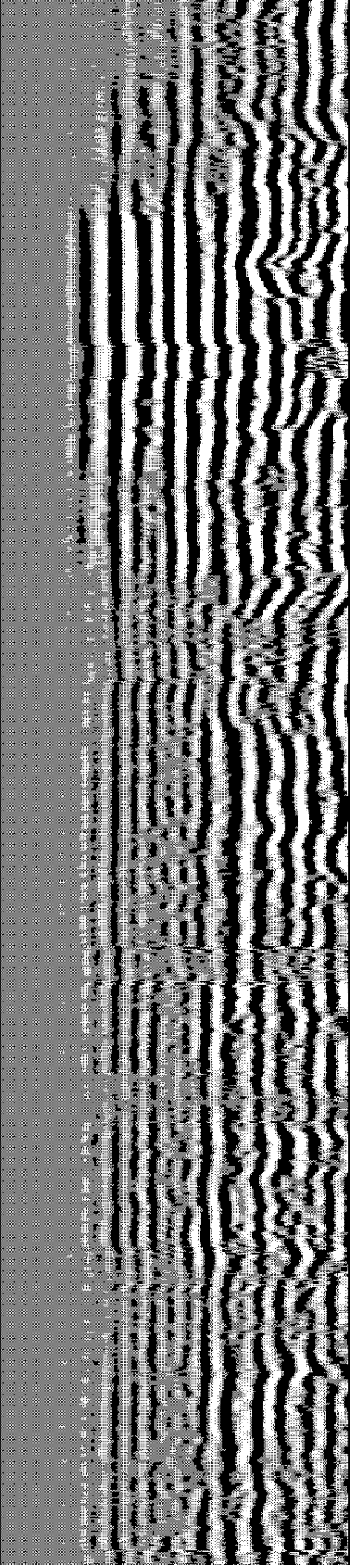
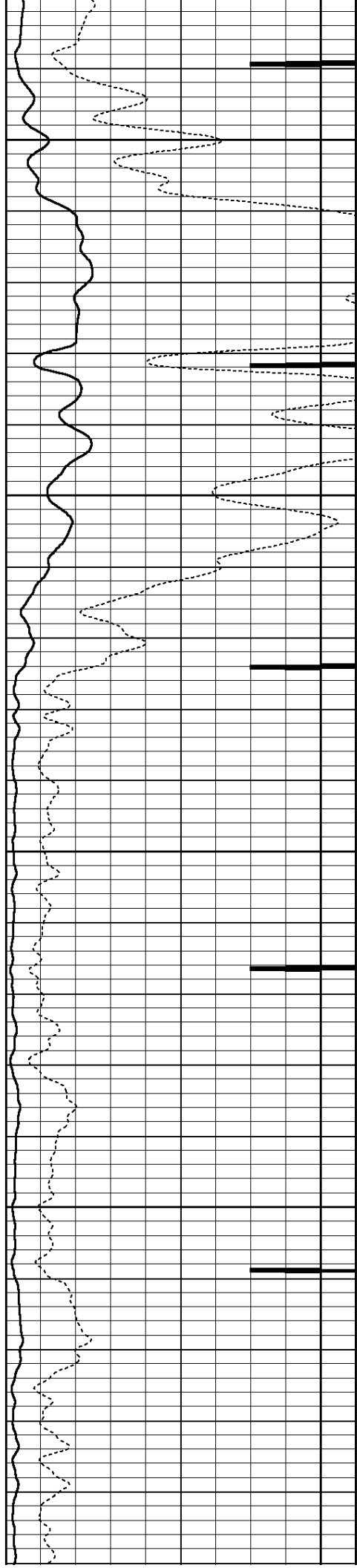
1100

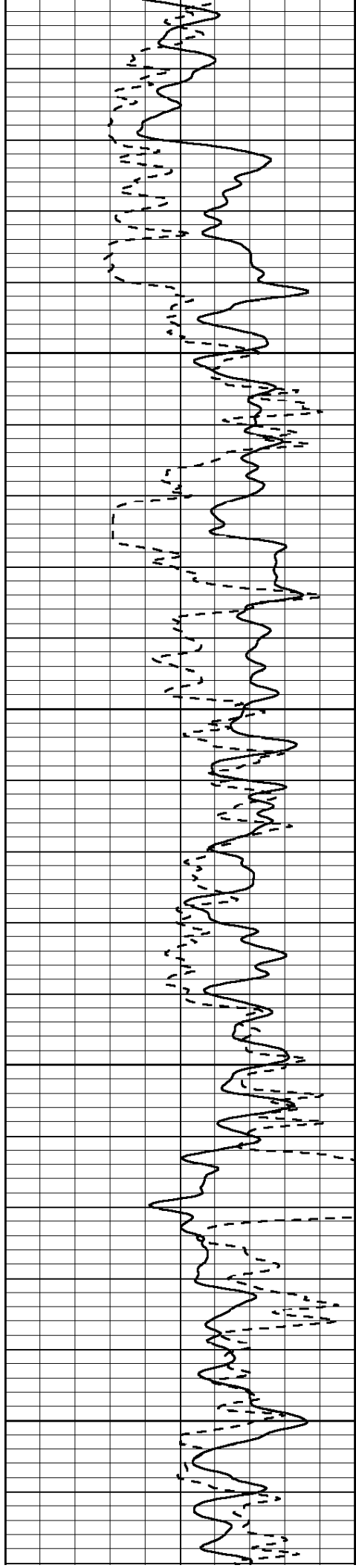
1150

1200

1250

1300





1350
1400
1450
1500

