



Pioneer Energy Services

Dual Compensated Porosity Log

API No. 15-135-25407-00-00

Company: American Warrior, Inc.
 Well: Ryerse #1-36
 Field: Ryerse
 County: Ness
 Location: 2560' FSL & 335' FWL
 State: Kansas

Sec: 36 Twp: 18 S Rge: 21 W

Other Services: DIL

Elevation: 2142

Permanent Datum: Ground Level
 Log Measured From: Kelly Bushing
 Drilling Measured From: Kelly Bushing

Elevation 2142
 K.B. 2150
 D.F. 2142
 G.L. 2142

Date	04-23-2013	
Run Number	One	
Type Log	CNL / CDL	
Depth Driller	4218	
Depth Logger	4217	
Bottom Logged Interval	4196	
Top Logged Interval	3500	
Type Fluid In Hole	Chemical	
Salinity, PPM CL	7400	
Density	9.5	
Level	Full	
Max. Rec. Temp. F	120	
Operating Rig Time	2 1/2 Hours	
Equipment -- Location	91 Hays	
Recorded By	Y. Ruiz	
Witnessed By	Jason Alm	

Borehole Record		Casing Record					
Run No.	Bit	From	To	Size	Wgt.	From	To
One	12.25	00	221	8.625	23#	00	221
Two	7.875	221	TD				

<<< Fold Here >>>

All interpretations are opinions based on inferences from electrical or other measurements and we cannot and do not guarantee the accuracy or correctness of any interpretation, and we shall not, except in the case of gross or willful negligence on our part, be liable or responsible for any loss, costs, damages, or expenses incurred or sustained by anyone resulting from any interpretation made by any of our officers, agents or employees. These interpretations are also subject to our general terms and conditions set out in our current Price Schedule.

Comments

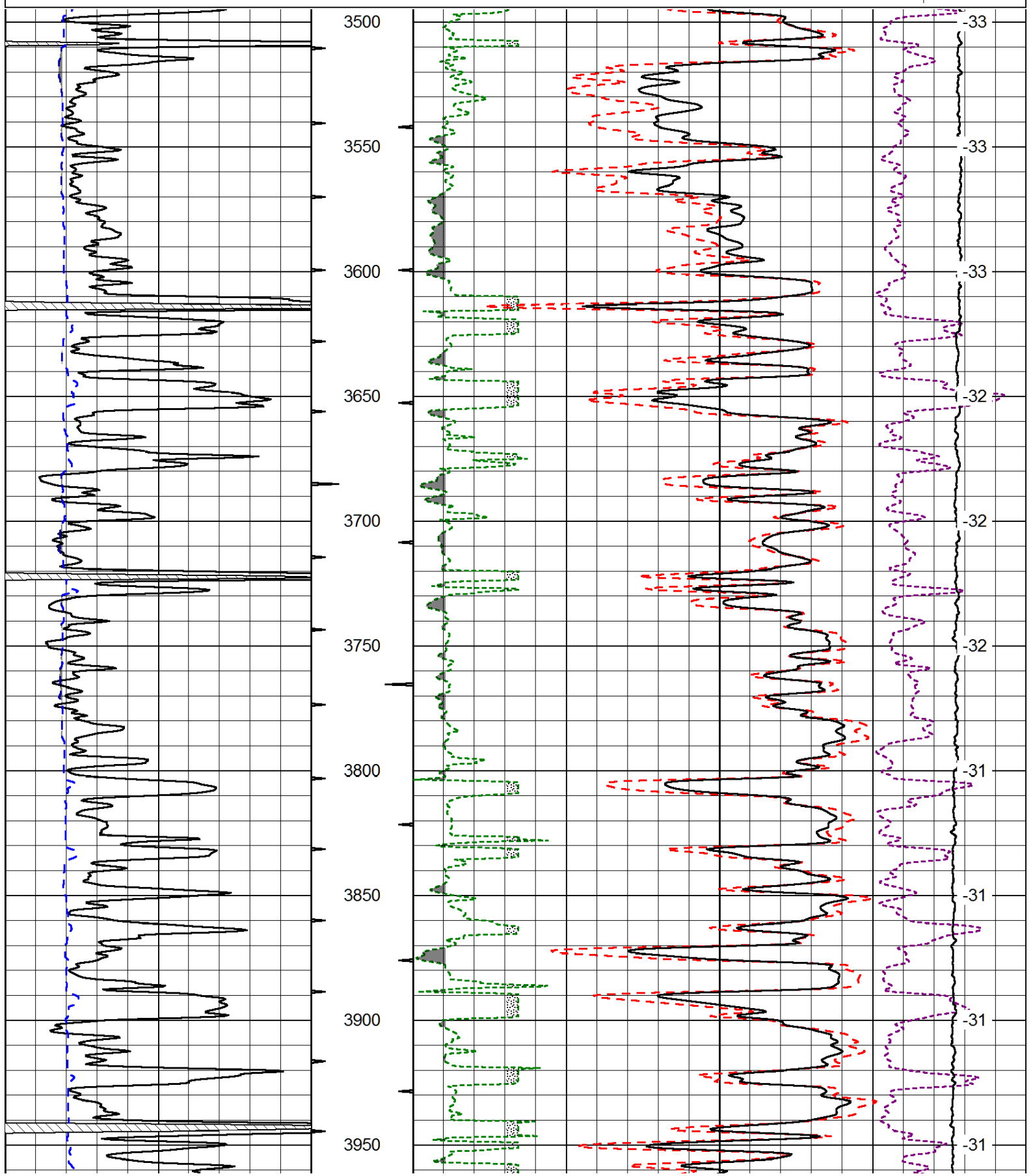
Thank you for using Log-Tech, Inc.
 (785) 625-3858

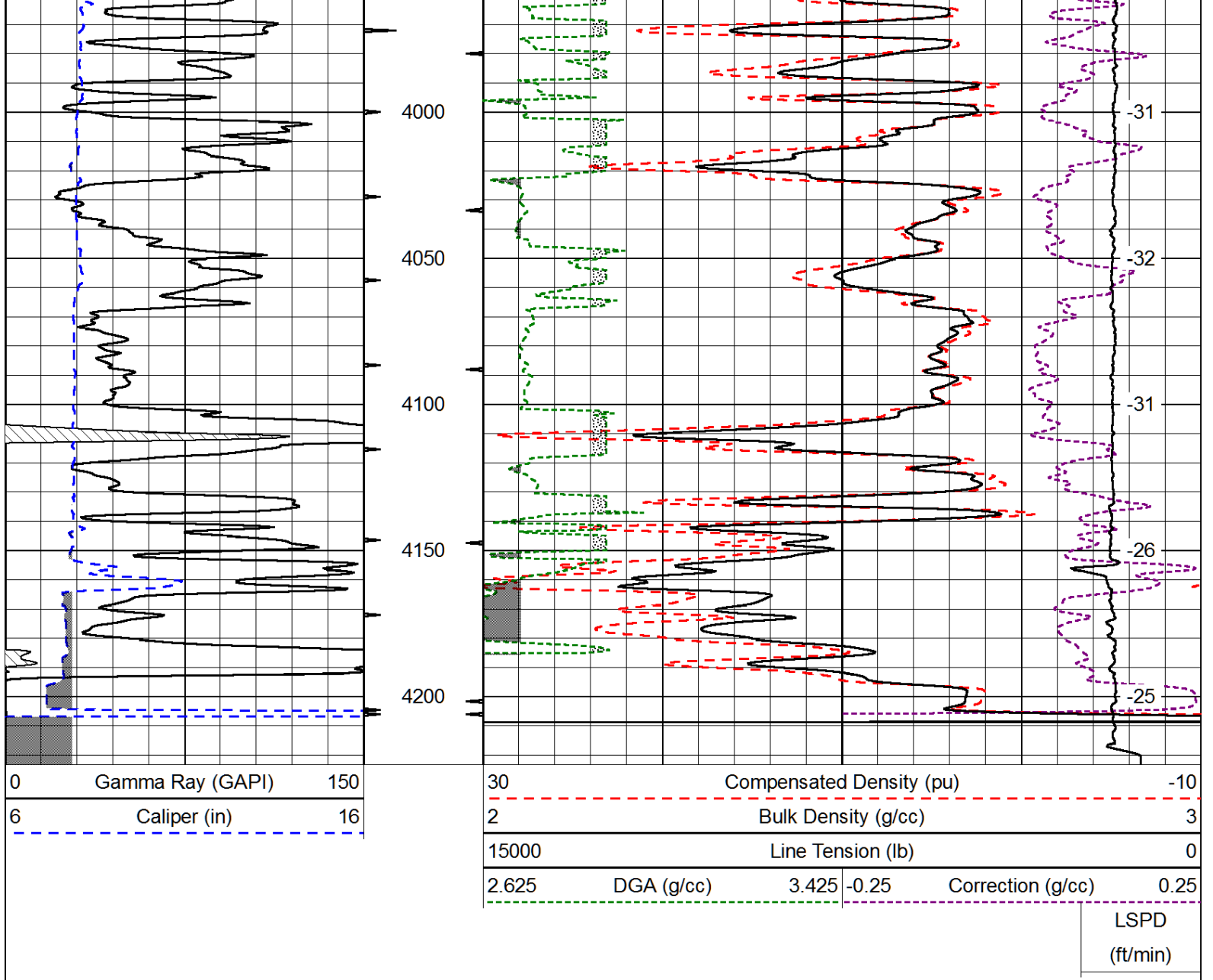
Alexander,
 2 1/2 West,
 South into

0	Gamma Ray (GAPI)	150
6	Caliper (in)	16

30	Compensated Density (pu)		-10
2	Bulk Density (g/cc)		3
15000	Line Tension (lb)		0
2.625	DGA (g/cc)	3.425	-0.25
		Correction (g/cc)	0.25

LSPD
(ft/min)





Database File: american_warrior_042313hd.db
 Dataset Pathname: Dil/awstk
 Presentation Format: cndlspec
 Dataset Creation: Tue Apr 23 14:36:44 2013
 Charted by: Depth in Feet scaled 1:240

