



Pioneer Energy Services

Computer Processed Interpretation

API No. 15-135-25407-00-00

Company American Warrior, Inc.
Well Ryerse #1-36
Field Ryerse
County Ness State Kansas

Location 2560' FSL & 335' FWL

Sec: 36 Twp: 18 S Rge: 21 W

Other Services
DIL/CNL/CDL

Permanent Datum Ground Level Elevation 2142
Log Measured From Kelly Bushing 8 Ft. Above Perm. Datum
Drilling Measured From Kelly Bushing

K.B. 2150
D.F. 2142
G.L. 2142

Date Recorded 04-23-2013

Depth Logger 4217

Curve Definitions

SW Water Saturation

SXO Water Saturation In The Flushed Zone

VCL Volume Of Clay

PHIE Density - Neutron Crossplot Shale Corrected

BWV Bulk Volume Water

BWMSXO Bulk Volume Water In Flushed Zone

DCAL Caliper

SPC SP Corrected For Baseline

DGA Apparent Grain Density

Payflag If PHIE> 2 %, VCL< 40 %, SPC> -10 , SW< 50 % & DCAL< 11

Recorded By Y. Ruiz D. Schmidt

Witnessed By Jason Alm

Analysis By T. Martin

<<< Fold Here >>>

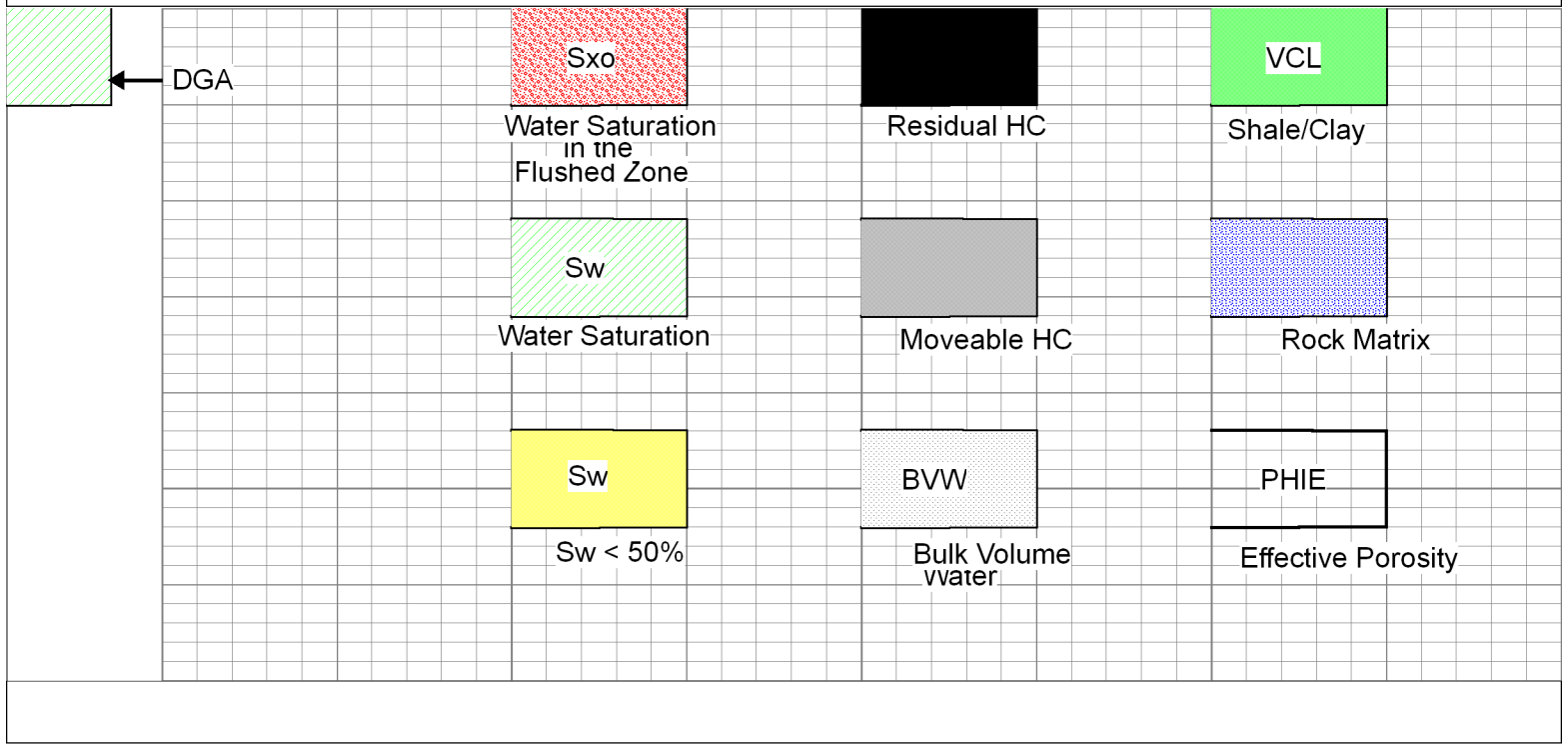
All interpretations are opinions based on inferences from electrical or other measurements and we cannot and do not guarantee the accuracy or correctness of any interpretation, and we shall not, except in the case of gross or willful negligence on our part, be liable or responsible for any loss, costs, damages, or expenses incurred or sustained by anyone resulting from any interpretation made by any of our officers, agents or employees. These interpretations are also subject to our general terms and conditions set out in our current Price Schedule.

Comments

Thank you for using Log-Tech, Inc.
www.logtechinc.com

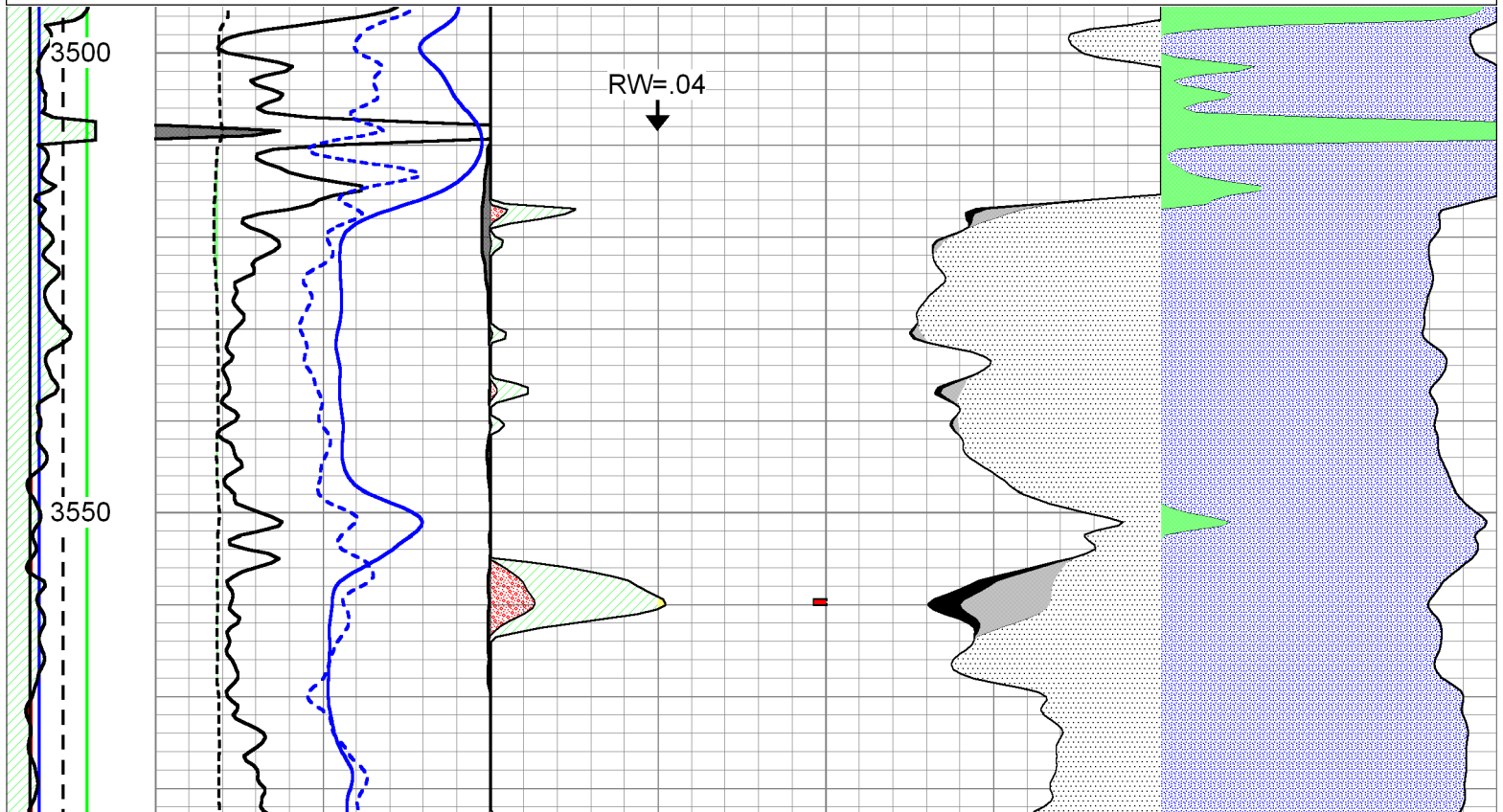
Alexander,
2 1/2 West,
South into

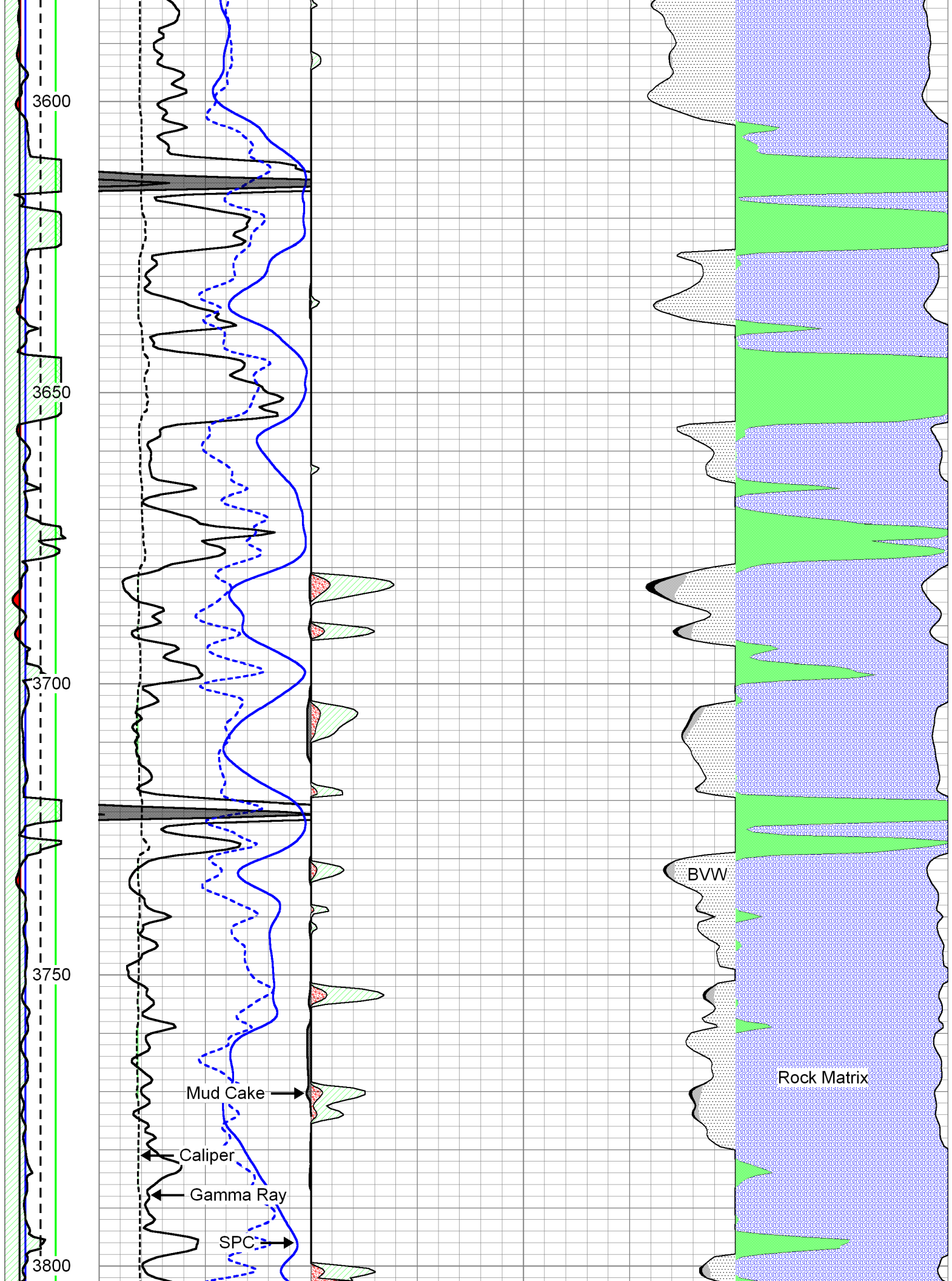
Database File: c:\warrior\data\cross plots\2wxplt.db
Dataset Pathname: litho
Presentation Format: 2wxplt
Dataset Creation: Thu Apr 24 14:32:02 1997
Charted by: Depth in Feet scaled 1:240

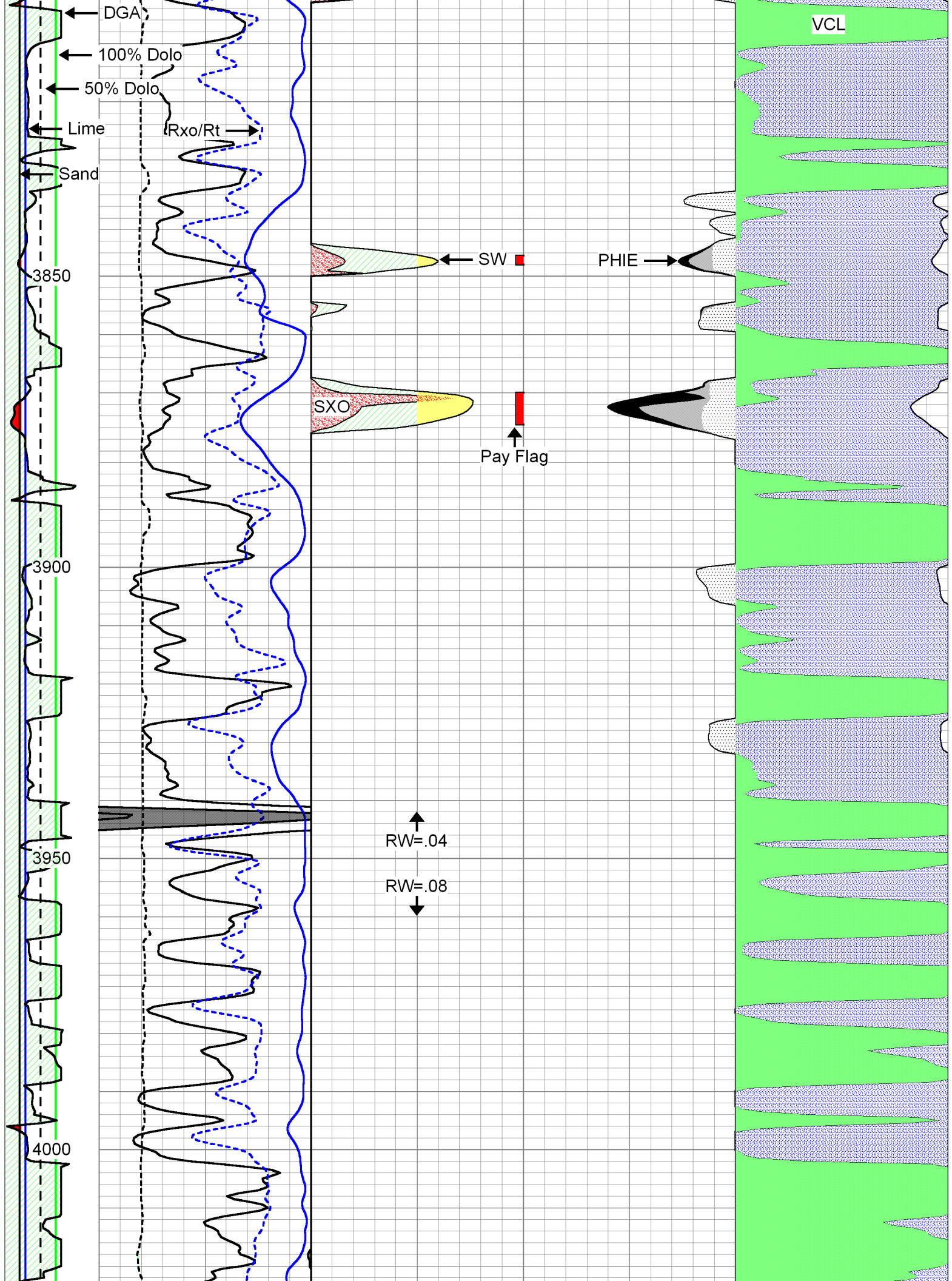


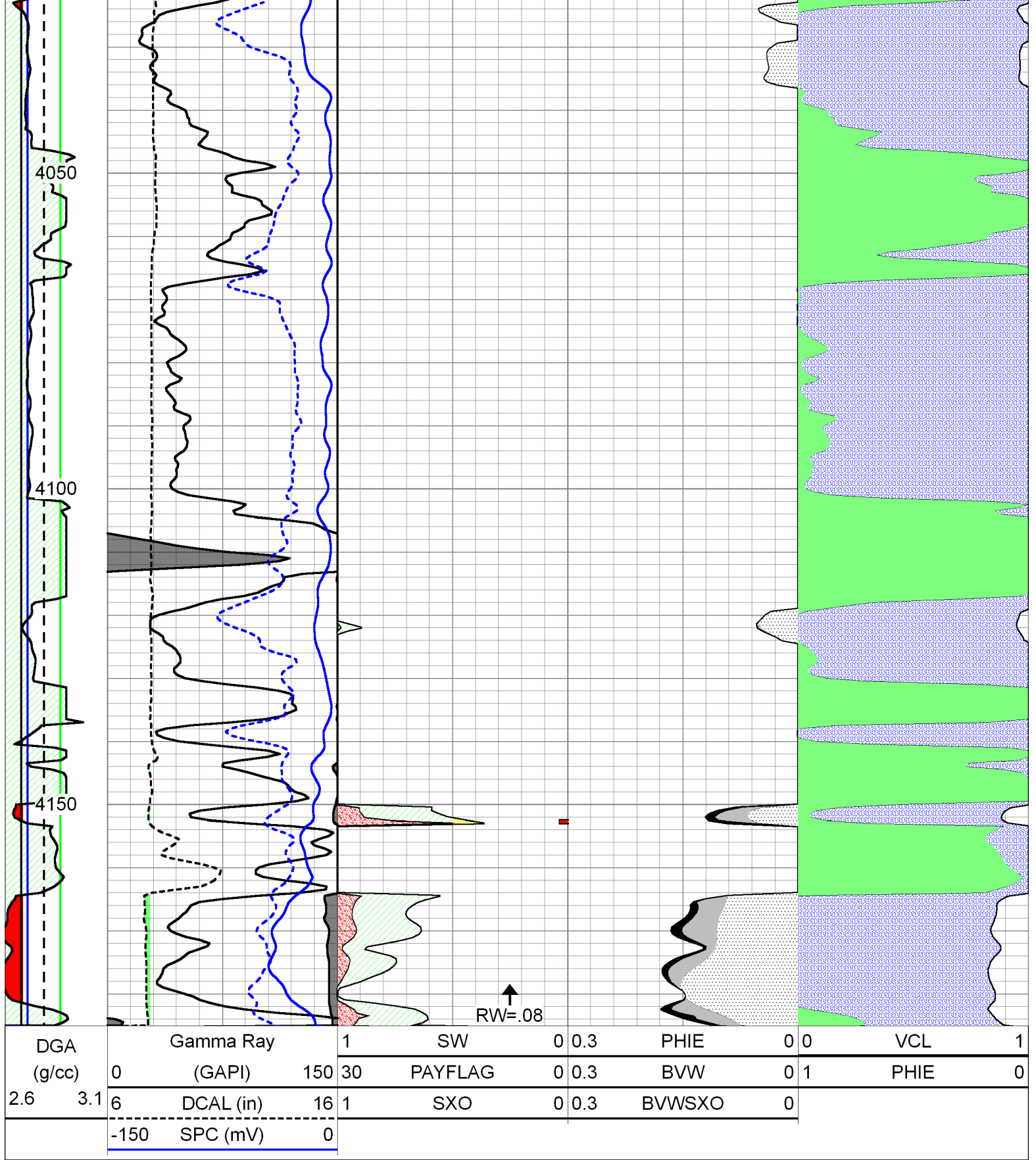
Database File: american warrior_042313hd.db
 Dataset Pathname: Dil/awcpi
 Presentation Format: calc
 Dataset Creation: Tue Apr 23 17:34:49 2013
 Charted by: Depth in Feet scaled 1:240

DGA	Gamma Ray	1	SW	0	0.3	PHIE	0	0	VCL	1
(g/cc)	(GAPI)	150	PAYFLAG	0	0.3	BVW	0	1	PHIE	0
2.6 3.1	DCAL (in)	16	SXO	0	0.3	BVWSXO	0			
	SPC (mV)	0								









RW=.08