



Pioneer Energy Services

Dual Induction Log

15-135-25,506-00-00

API No.

Company **American Warrior, Inc.**

Well **Moore #8-1**

Field **Dewald North**

County **Ness** State

Kansas

Location **1397' FSL & 462' FEL**

Other Services
CNL/CDL

Sec: **1** Twp: **19S** Rge: **22W**

Permanent Datum **Ground Level** Elevation **2130**

Log Measured From **Kelly Bushing** **6** Ft. Above Perm. Datum

K.B. **2136**
D.F. **2130**
G.L. **2130**

Date	4/17/2013	
Run Number	One	
Depth Driller	4283	
Depth Logger	4250	
Bottom Logged Interval	4249	
Top Log Interval	1350	
Casing Driller	8.625 @ 1390	
Casing Logger	1388	
Bit Size	7.875	
Type Fluid in Hole	Chemical	
Salinity,ppm CL	6200	
Density / Viscosity	9.2 60	
pH / Fluid Loss	10.5 7.2	
Source of Sample	Flowline	
Rm @ Meas. Temp	1.2 @ 67	
Rmf @ Meas. Temp	.90 @ 67	
Rmc @ Meas. Temp	1.62 @ 67	
Source of Rmf / Rmc	Charts	
Rm @ BHT	.67 @ 121	
Operating Rig Time	3 1/2 Hours	
Max Rec. Temp. F	121	
Equipment Number	91	
Location	Hays	
Recorded By	D.Kerr	
Witnessed By	Jason Alm	

<<< Fold Here >>>

All interpretations are opinions based on inferences from electrical or other measurements and we cannot and do not guarantee the accuracy or correctness of any interpretation, and we shall not, except in the case of gross or willful negligence on our part, be liable or responsible for any loss, costs, damages, or expenses incurred or sustained by anyone resulting from any interpretation made by any of our officers, agents or employees. These interpretations are also subject to our general terms and conditions set out in our current Price Schedule.

Comments

Thank you for using Pioneer Energy Services
www.pioneerenergy.com
 785 625 3858

Bazine KS, 1 1/2 South, West Into

Database File: c:\warrior\data\amwar_moore #8-1\amwarrior_moore_8_1hd.db
 Dataset Pathname: DIL\awstc
 Presentation Format: dil2in
 Dataset Creation: Wed Apr 17 18:53:10 2013
 Charted by: Depth in Feet scaled 1:600

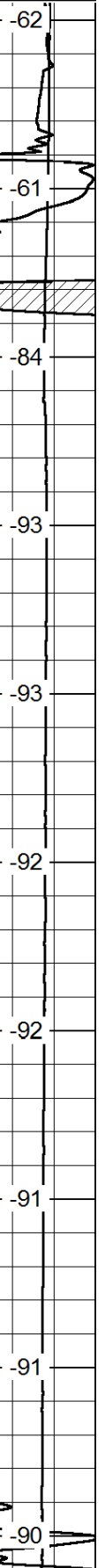
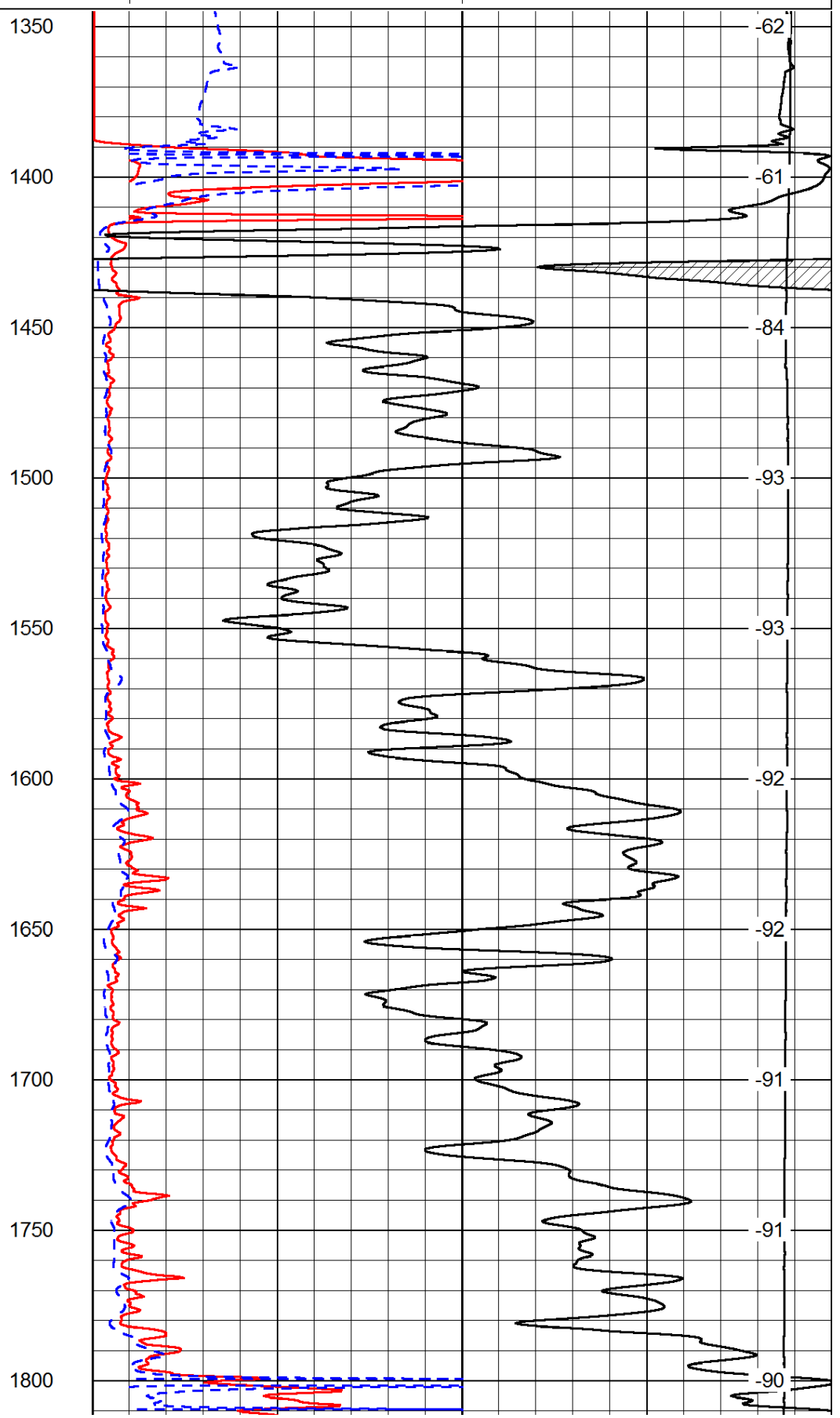
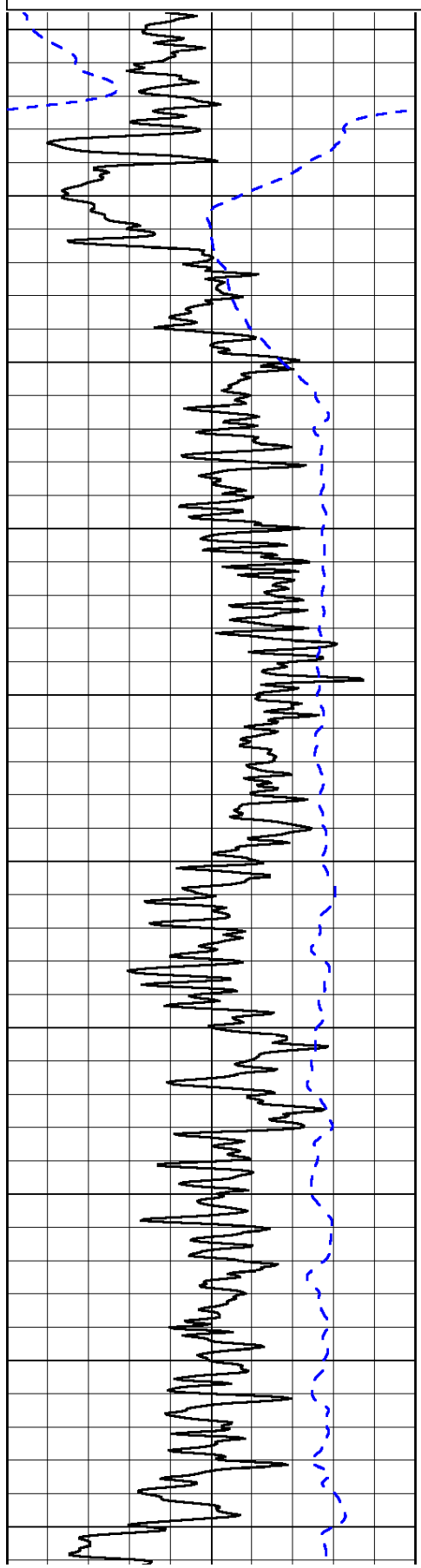
0	Gamma Ray	150
-200	SP (mV)	0

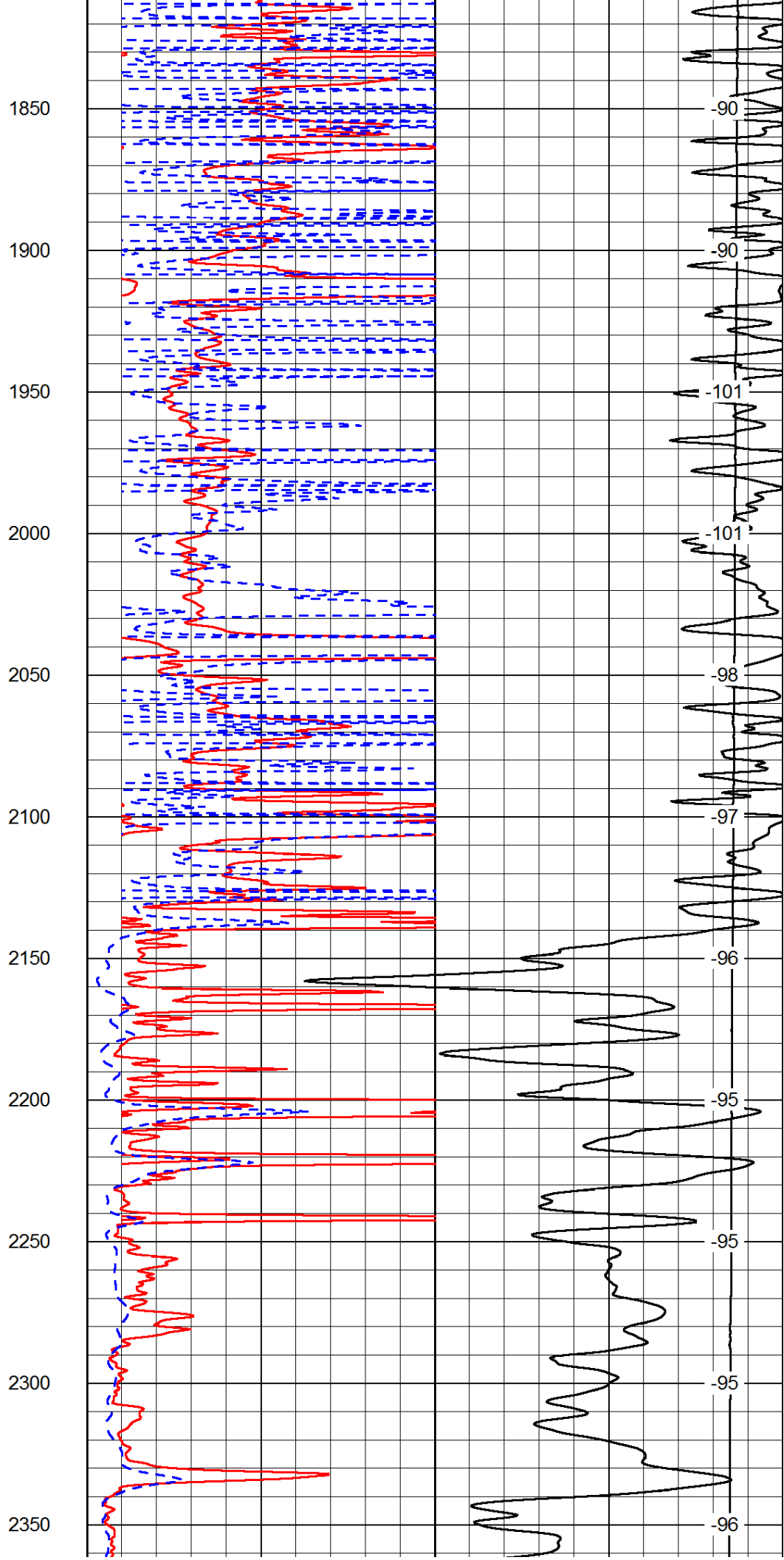
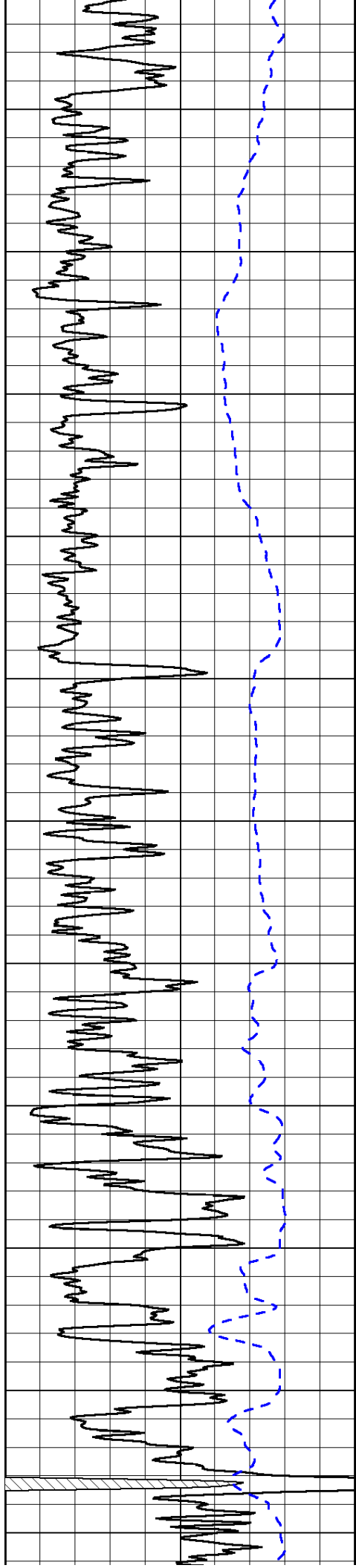
0	Shallow Resistivity	50
0	Deep Resistivity	50

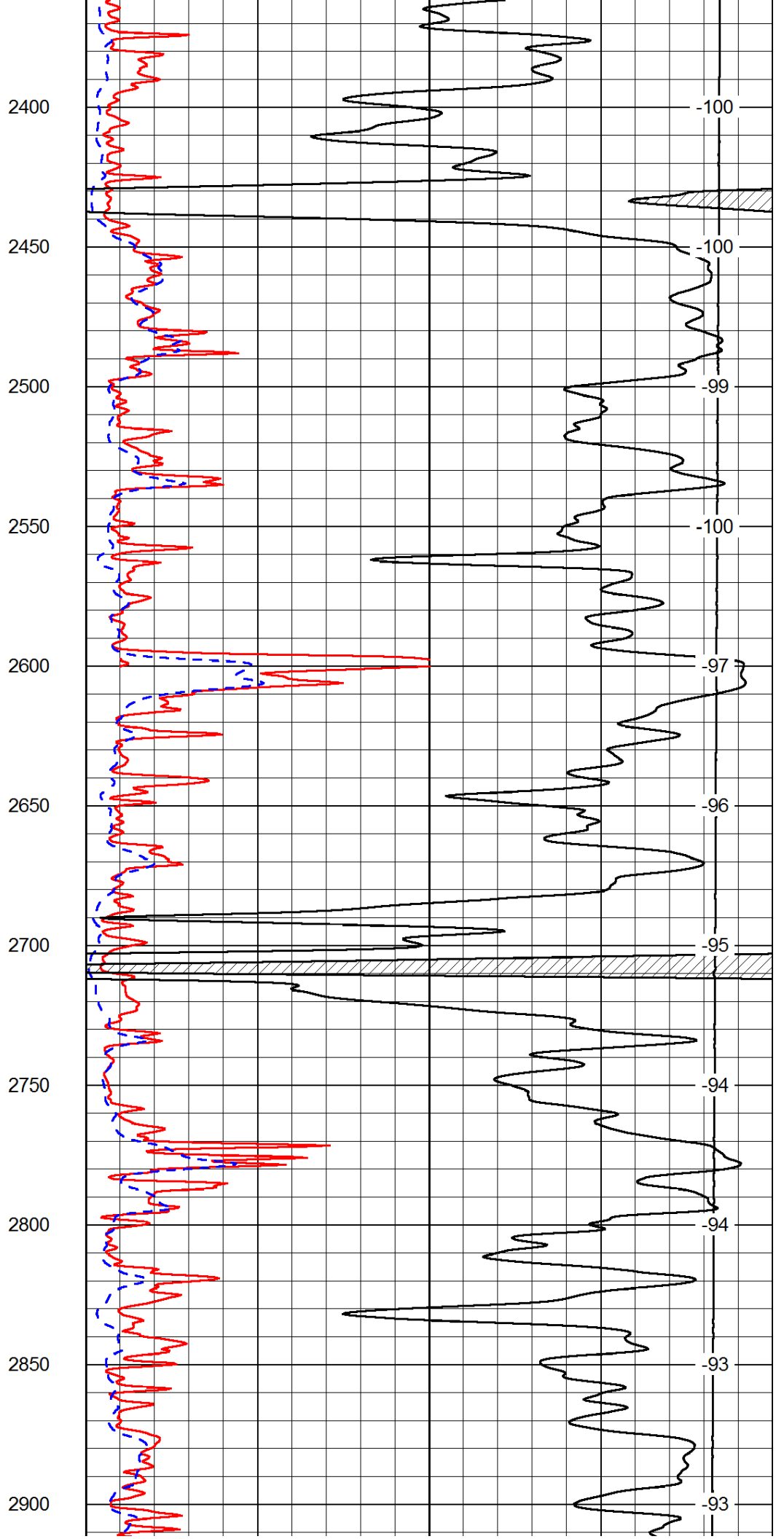
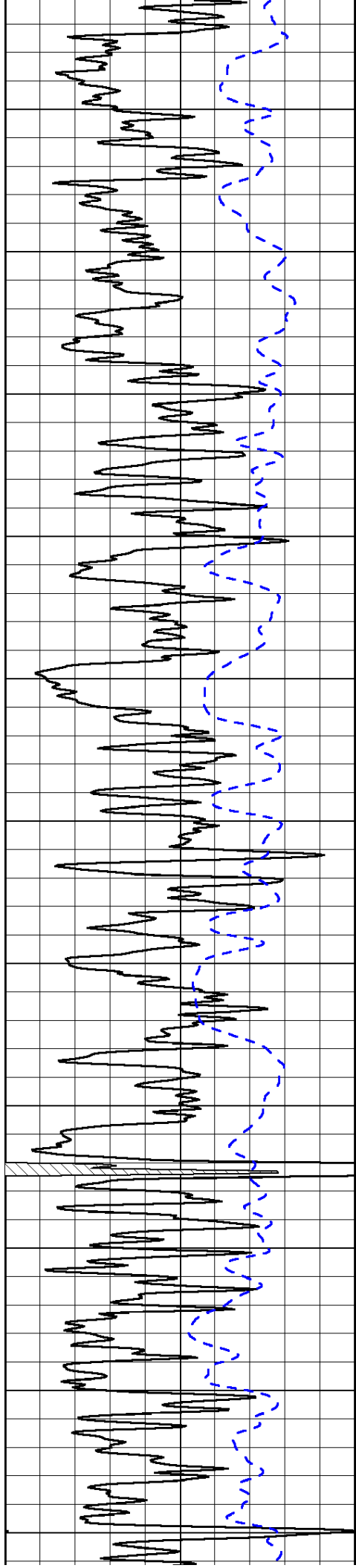
LSPD

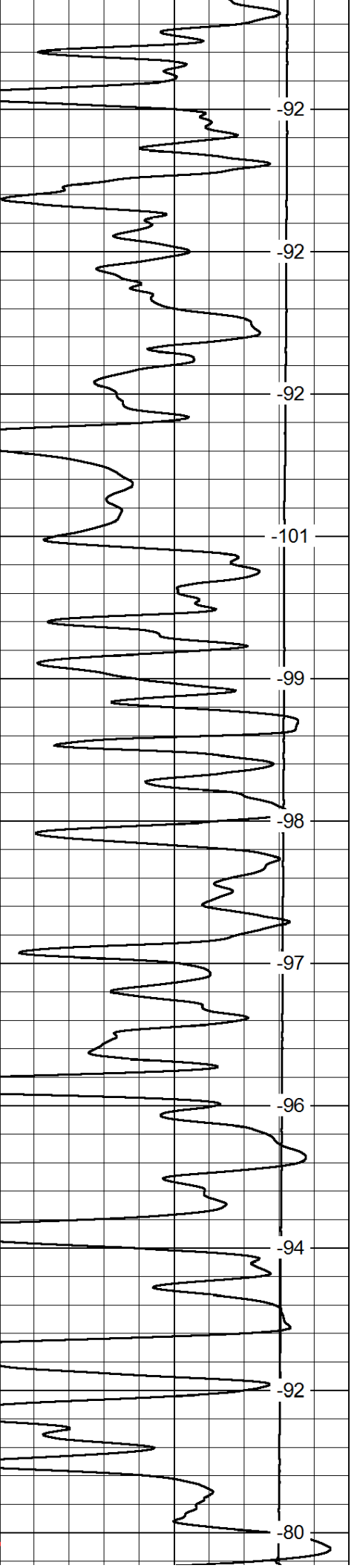
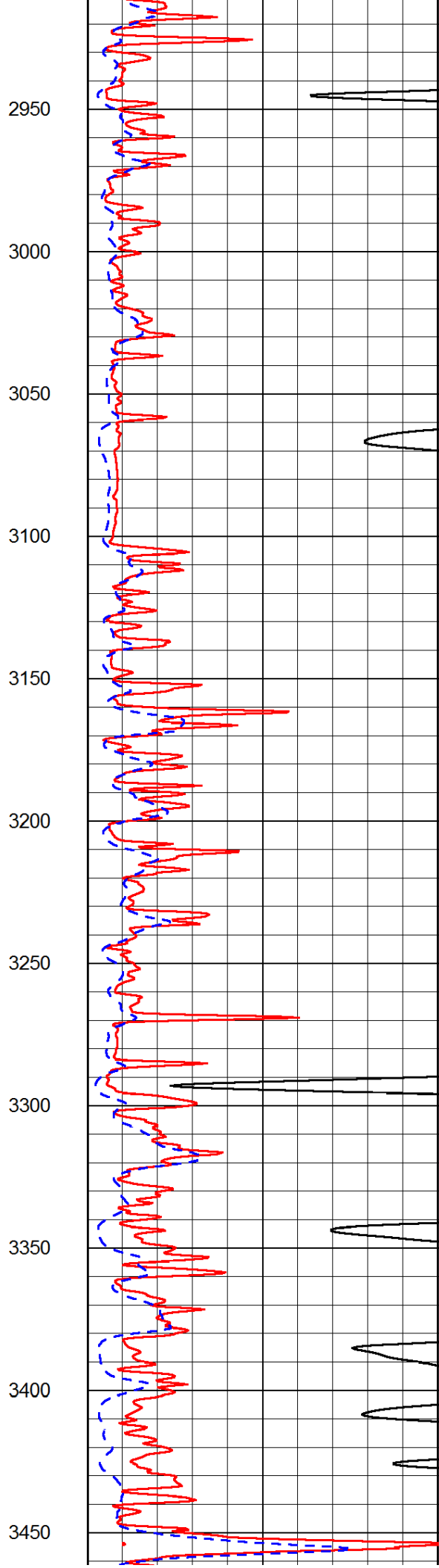
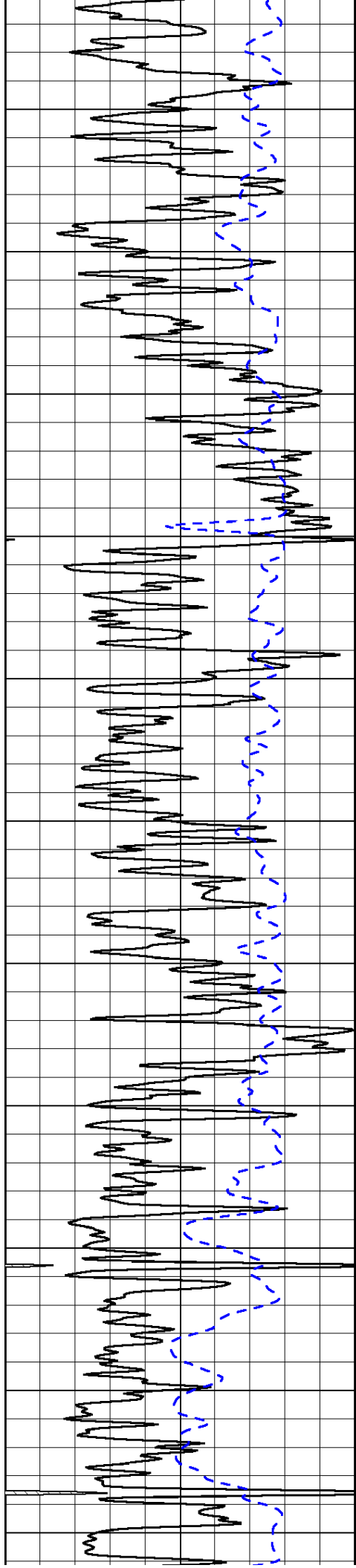
1000	Conductivity	0
15000	Line Tension	0

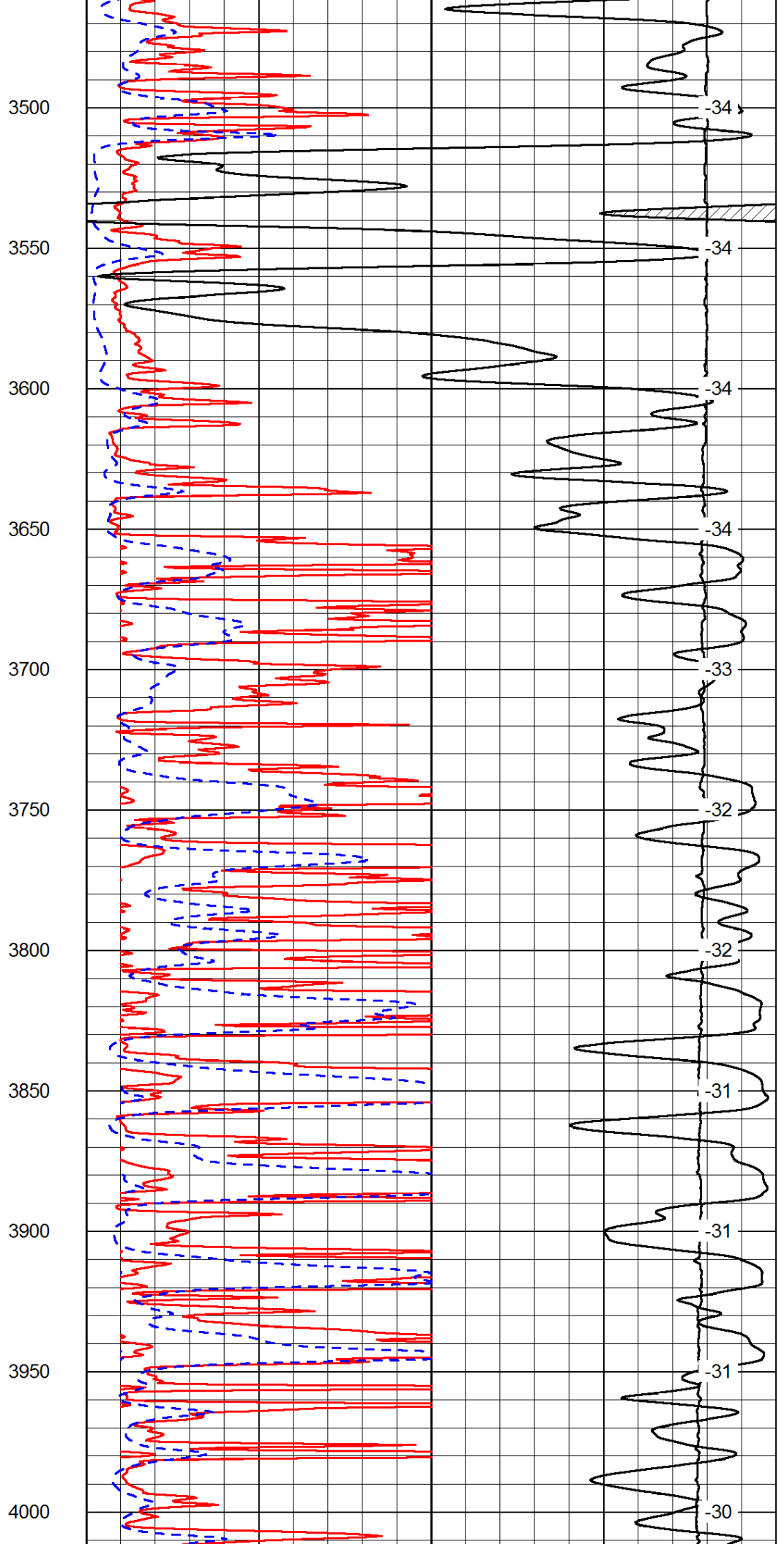
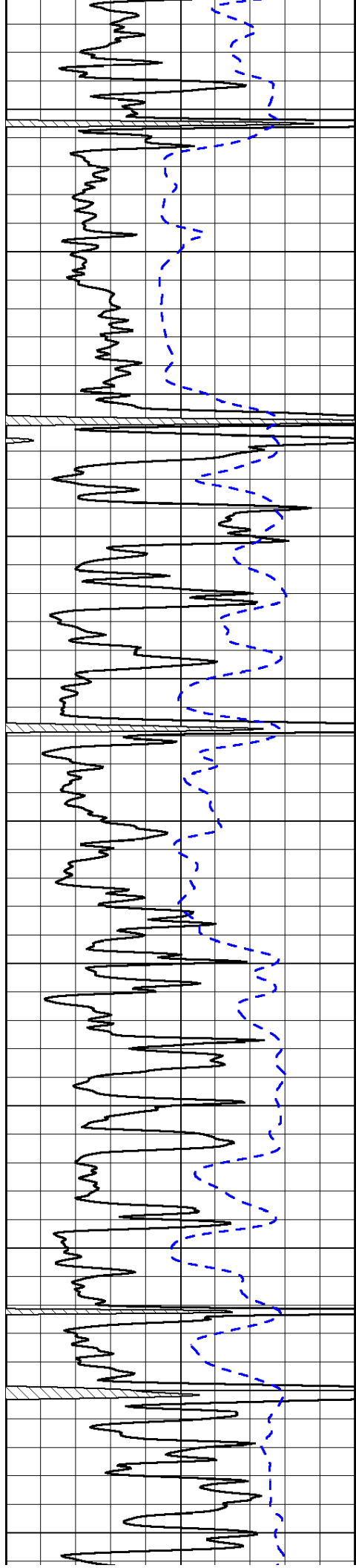
50	Shallow Resistivity	500
50	Deep Resistivity	500

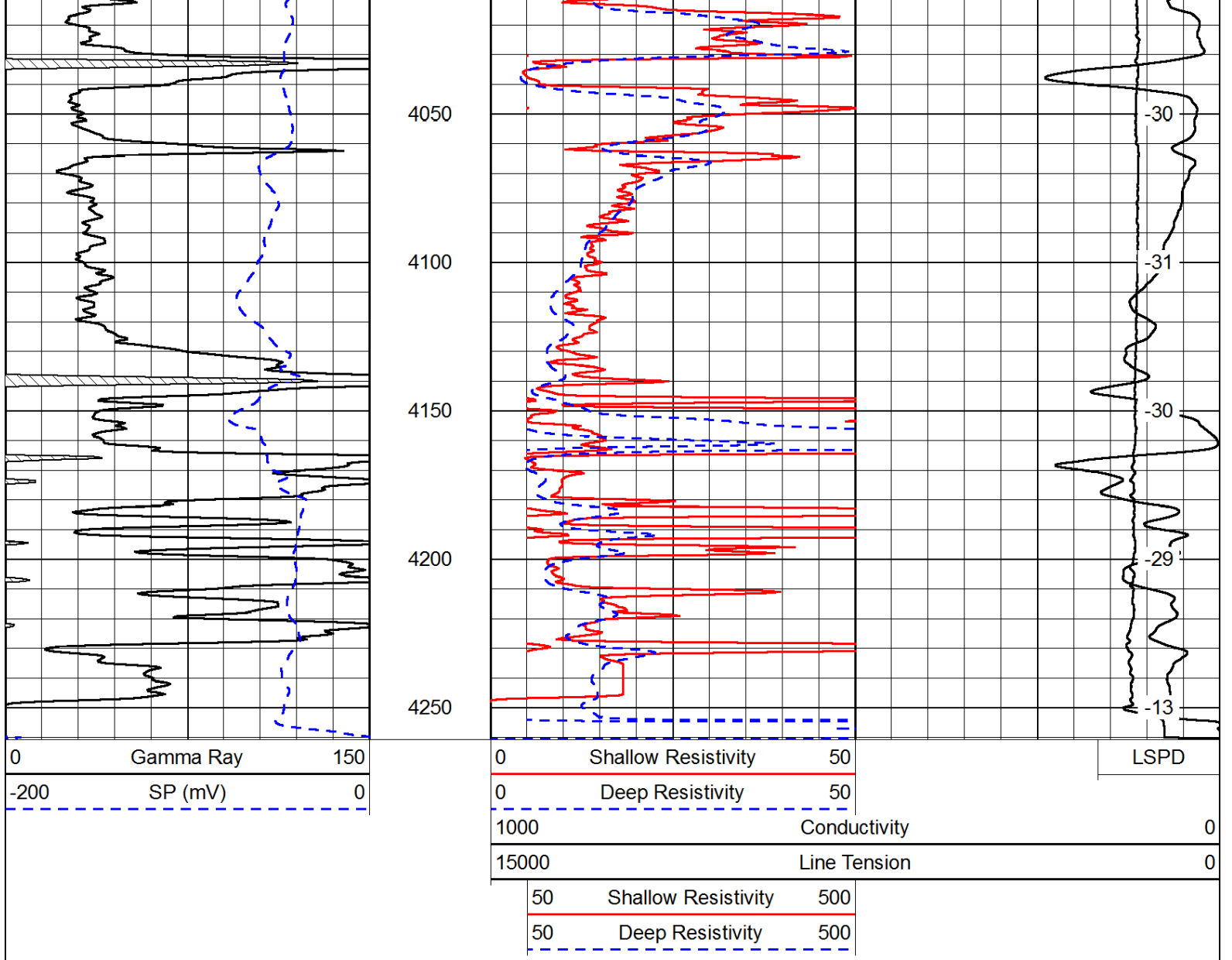




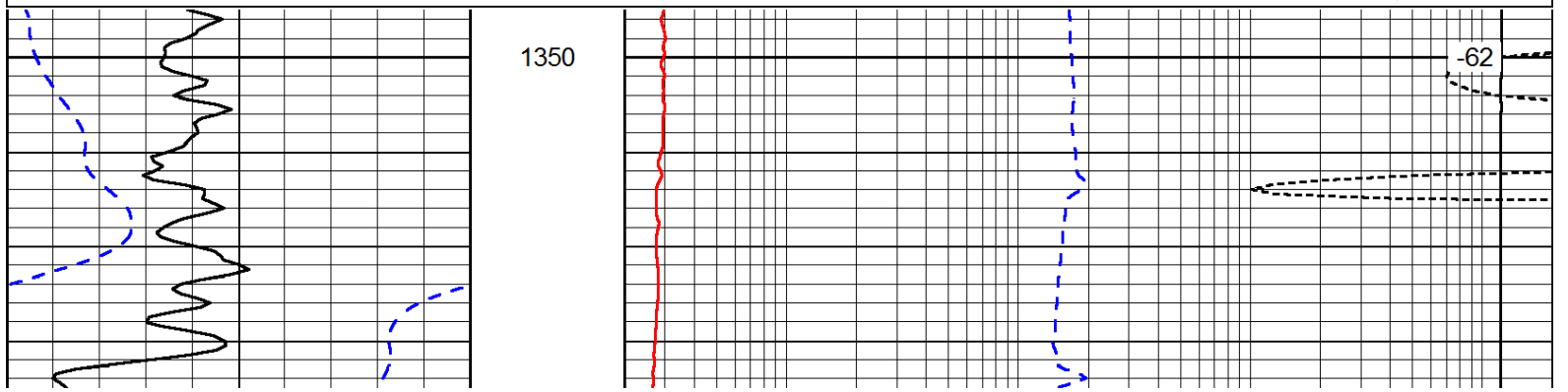
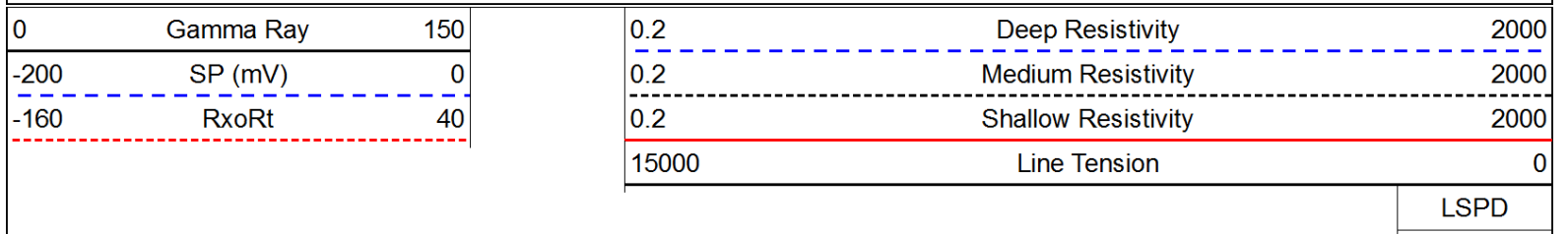


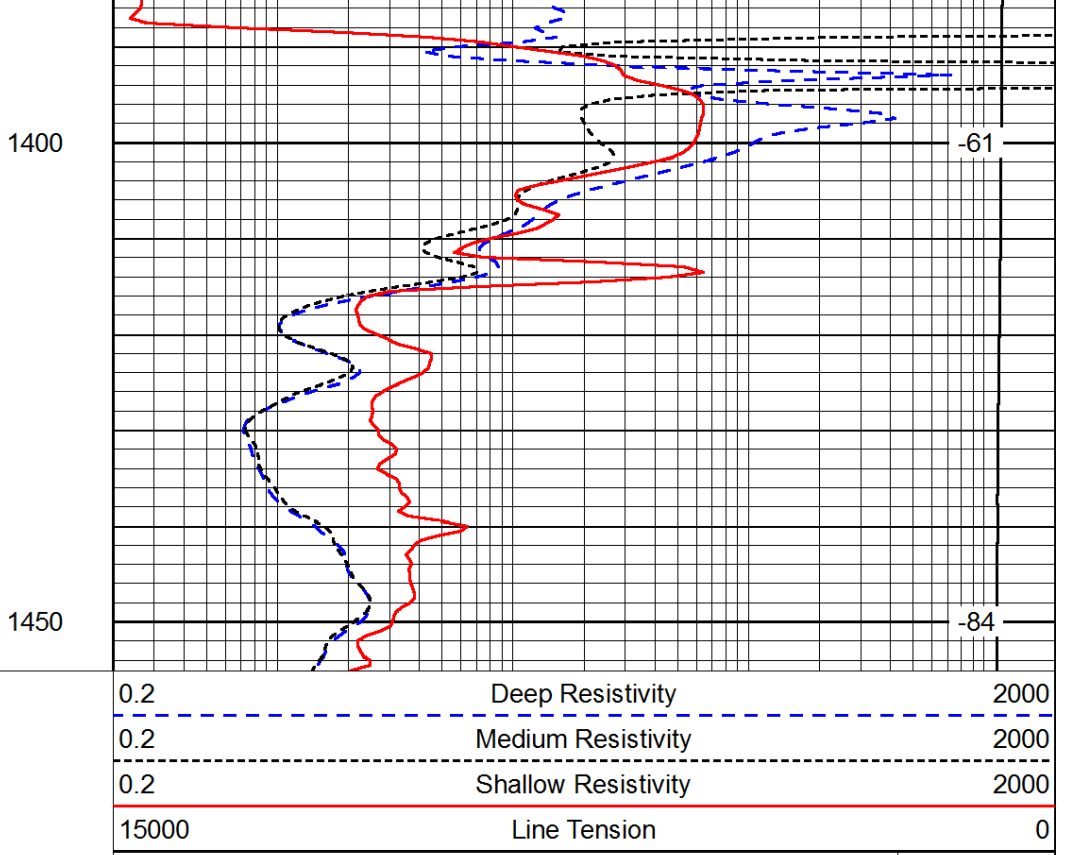
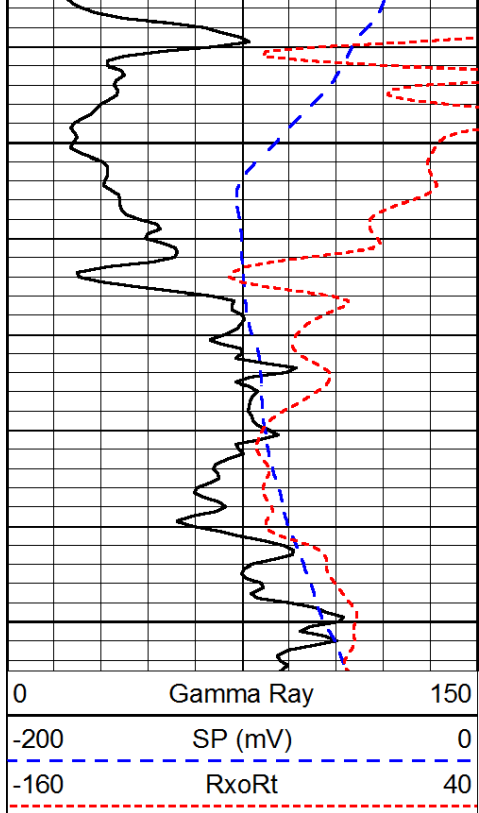






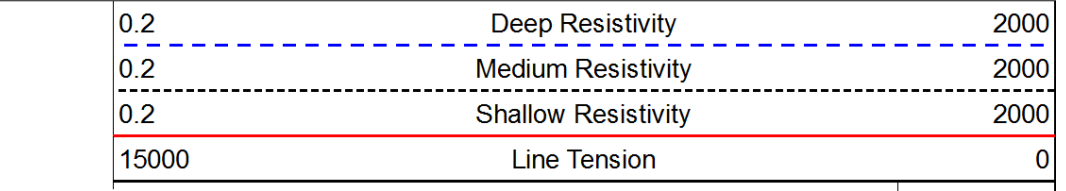
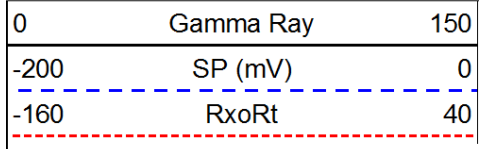
Database File: c:\warrior\data\amwar_moore #8-1\amwarrior_moore_8_1hd.db
 Dataset Pathname: DIL/awstk
 Presentation Format: dil
 Dataset Creation: Wed Apr 17 18:53:10 2013
 Charted by: Depth in Feet scaled 1:240



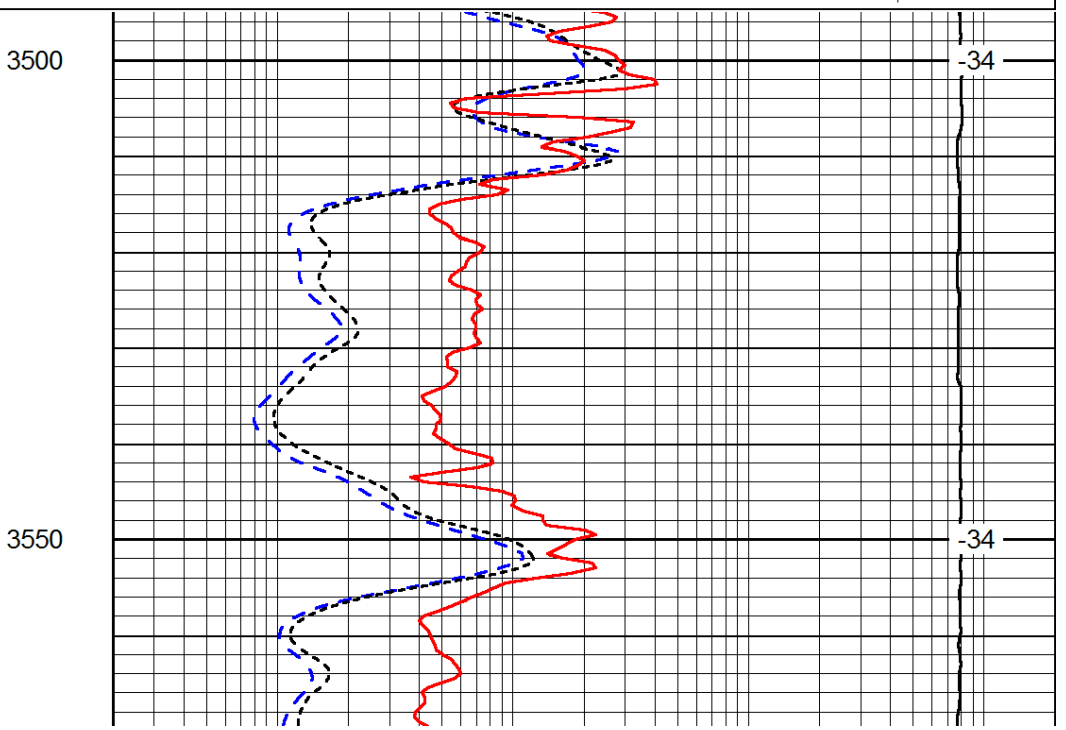
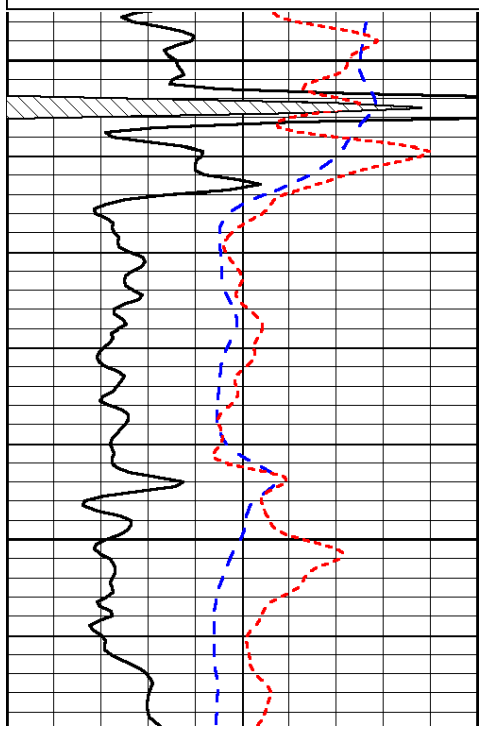


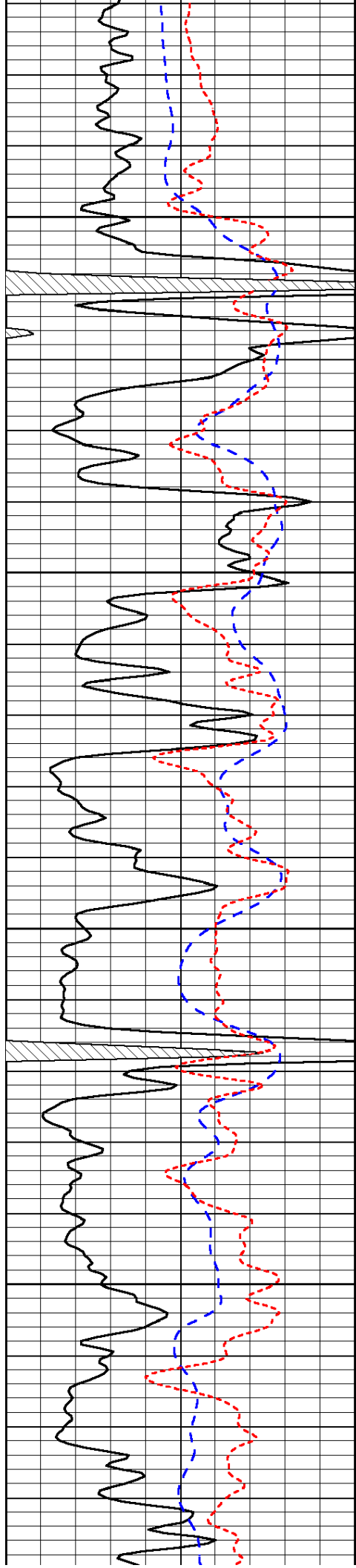
LSPD

Database File: c:\warrior\data\amwar_moore #8-1\amwarrior_moore_8_1hd.db
 Dataset Pathname: DIL/awstk
 Presentation Format: dil
 Dataset Creation: Wed Apr 17 18:53:10 2013
 Charted by: Depth in Feet scaled 1:240



LSPD



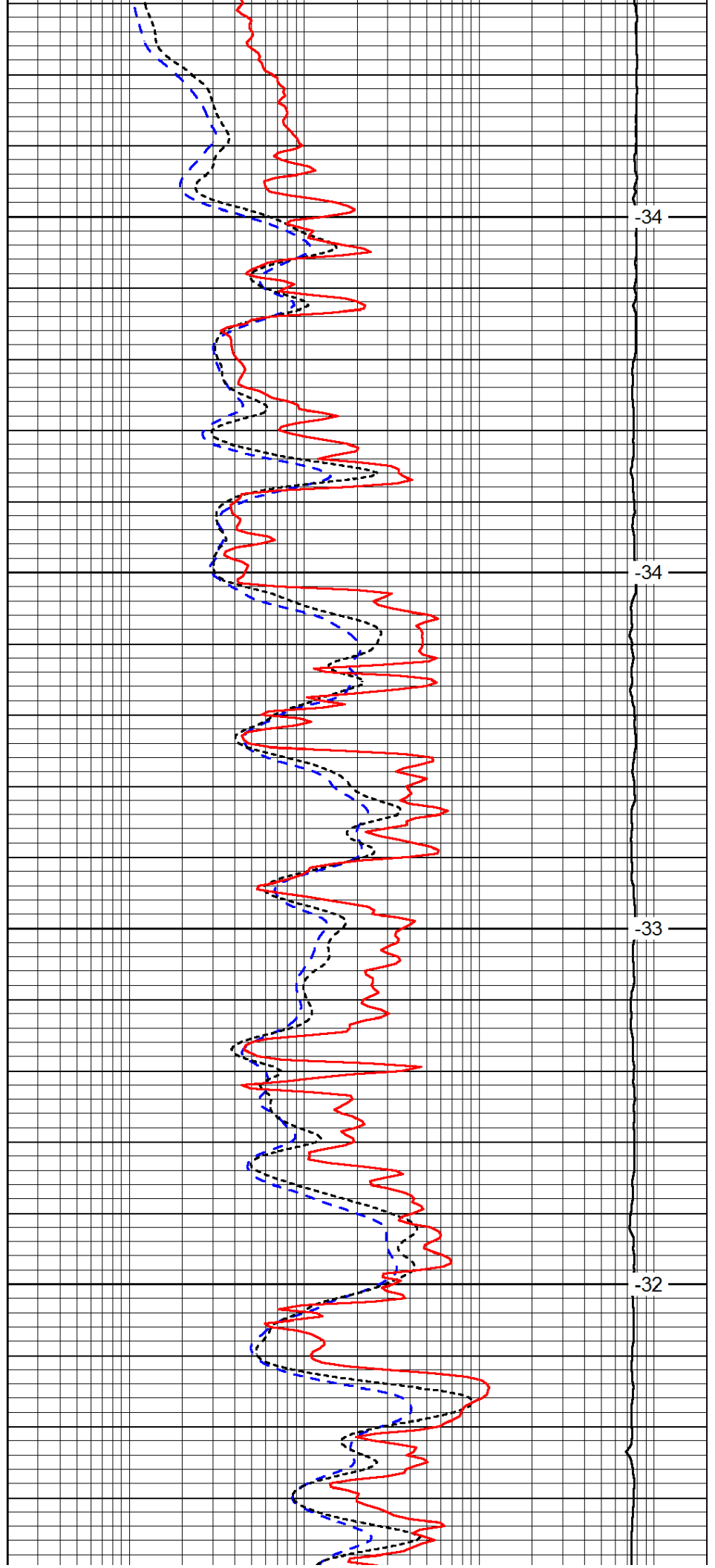


3600

3650

3700

3750

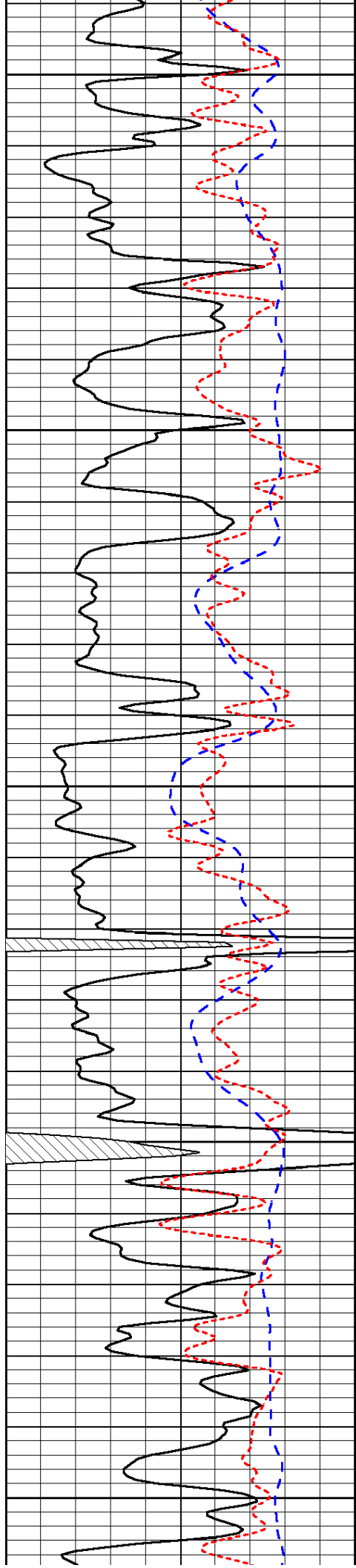


-34

-34

-33

-32



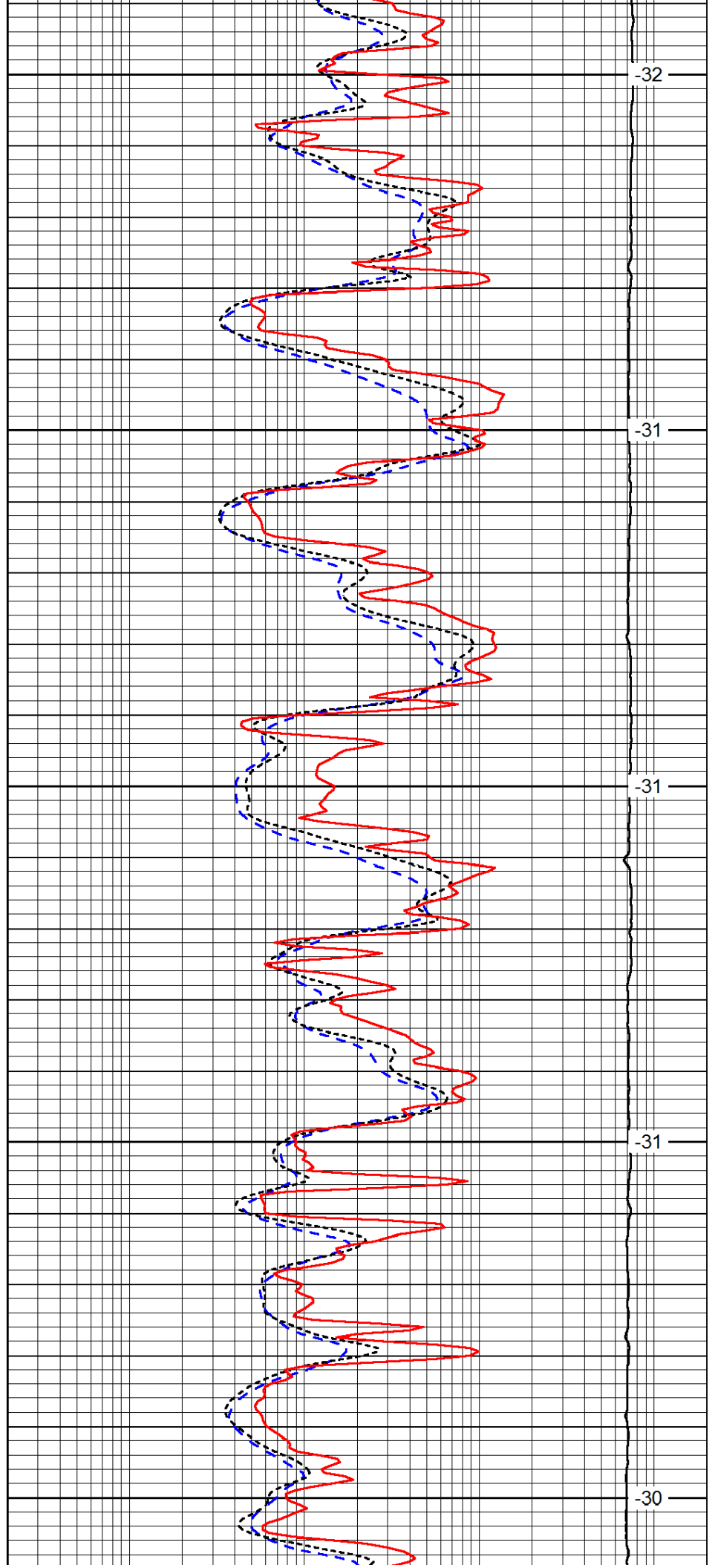
3800

3850

3900

3950

4000



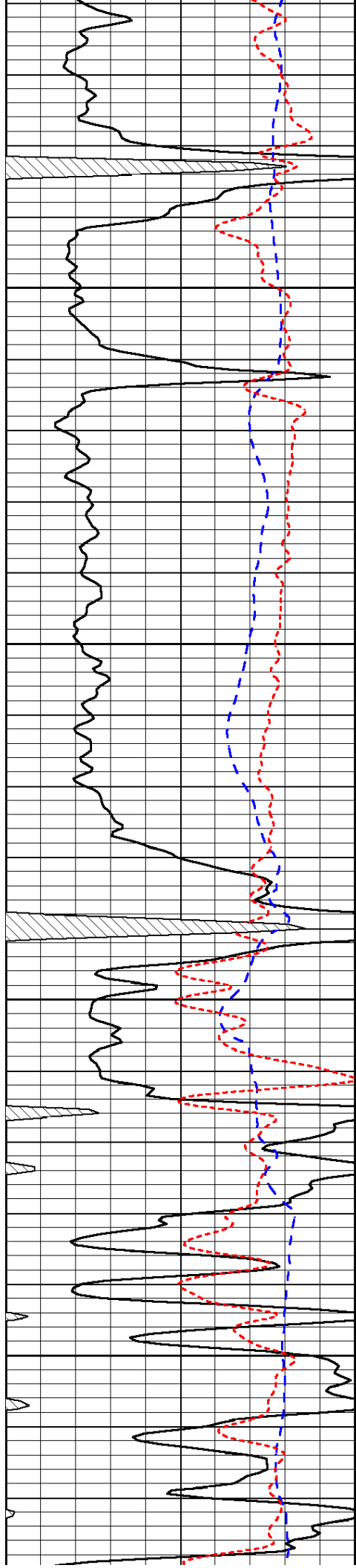
-32

-31

-31

-31

-30

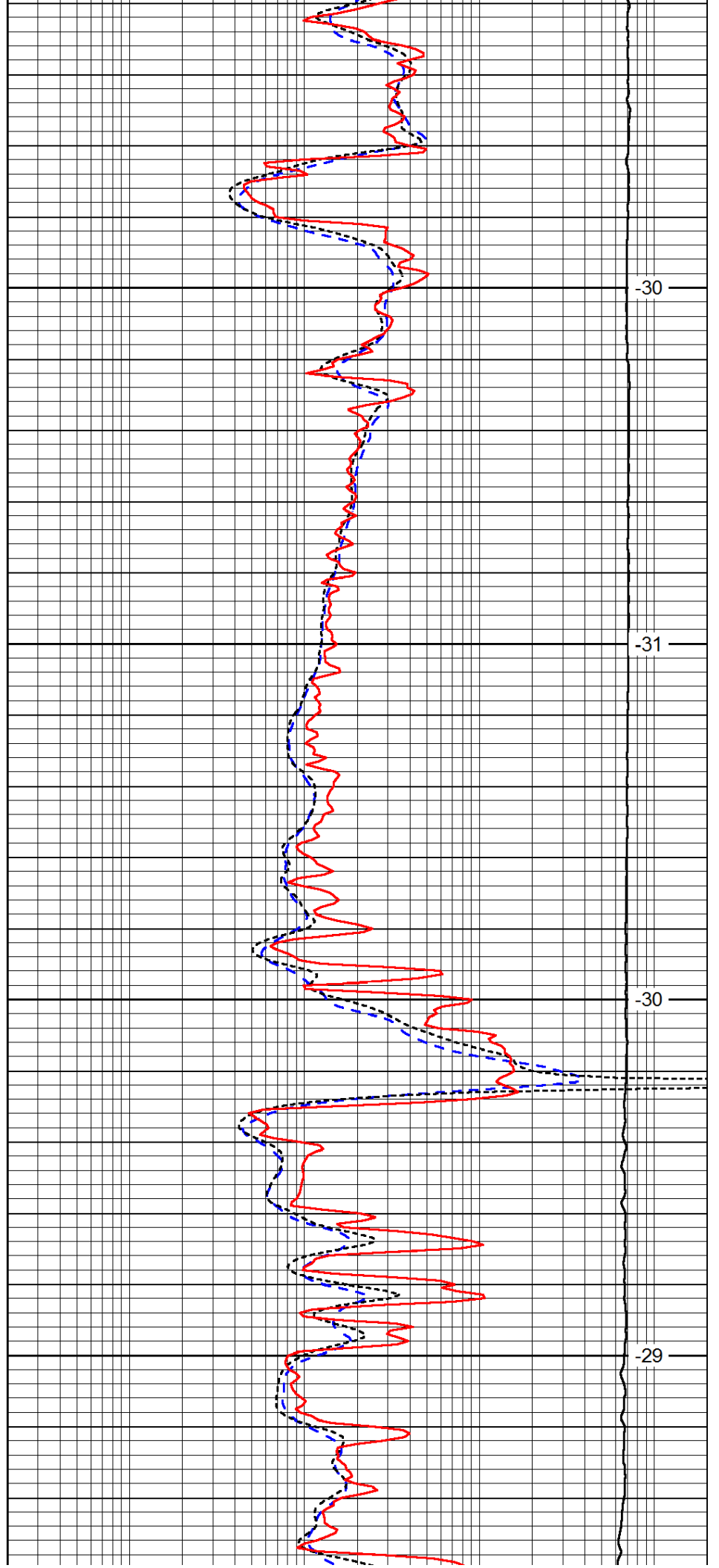


4050

4100

4150

4200

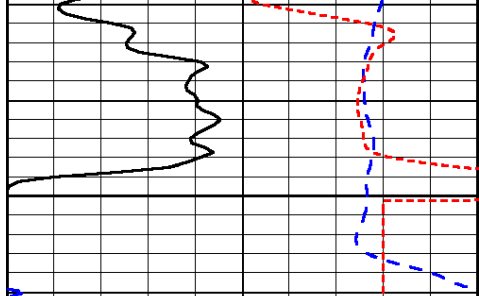


-30

-31

-30

-29



0	Gamma Ray	150
-200	SP (mV)	0
-160	RxoRt	40

4250



0.2	Deep Resistivity	2000
0.2	Medium Resistivity	2000
0.2	Shallow Resistivity	2000
15000	Line Tension	0

LSPD