



Pioneer Energy Services

Dual Compensated Porosity Log

15-135-25,506-00-00

API No.

Company **American Warrior, Inc.**
 Well **Moore #8-1**
 Field **Dewald North**
 County **Ness** State **Kansas**

Location **1397' FSL & 462' FEL**
 Sec: **1** Twp: **19S** Rge: **22W**

Permanent Datum **Ground Level** Elevation **2130**
 Log Measured From **Kelly Bushing** **6** Ft. Above Perm. Datum
 Drilling Measured From **Kelly Bushing**

Other Services
DIL
 Elevation
 K.B. **2136**
 D.F. **2130**
 G.L. **2130**

Date	4/17/2013
Run Number	One
Type Log	CNL / CDL
Depth Driller	4283
Depth Logger	4250
Bottom Logged Interval	4229
Top Logged Interval	3500
Type Fluid In Hole	Chemical
Salinity, PPM CL	6200
Density	9.2
Level	Full
Max. Rec. Temp. F	121
Operating Rig Time	3 1/2 Hours
Equipment -- Location	91 Hays
Recorded By	D Kerr
Witnessed By	Jason Alm

Borehole Record		Casing Record					
Run No.	Bit	From	To	Size	Wgt.	From	To
One	12.25	0	1390	8.625	23#	0	1390
Two	7.875	1390	TD				

<<< Fold Here >>>

All interpretations are opinions based on inferences from electrical or other measurements and we cannot and do not guarantee the accuracy or correctness of any interpretation, and we shall not, except in the case of gross or willful negligence on our part, be liable or responsible for any loss, costs, damages, or expenses incurred or sustained by anyone resulting from any interpretation made by any of our officers, agents or employees. These interpretations are also subject to our general terms and conditions set out in our current Price Schedule.

Comments

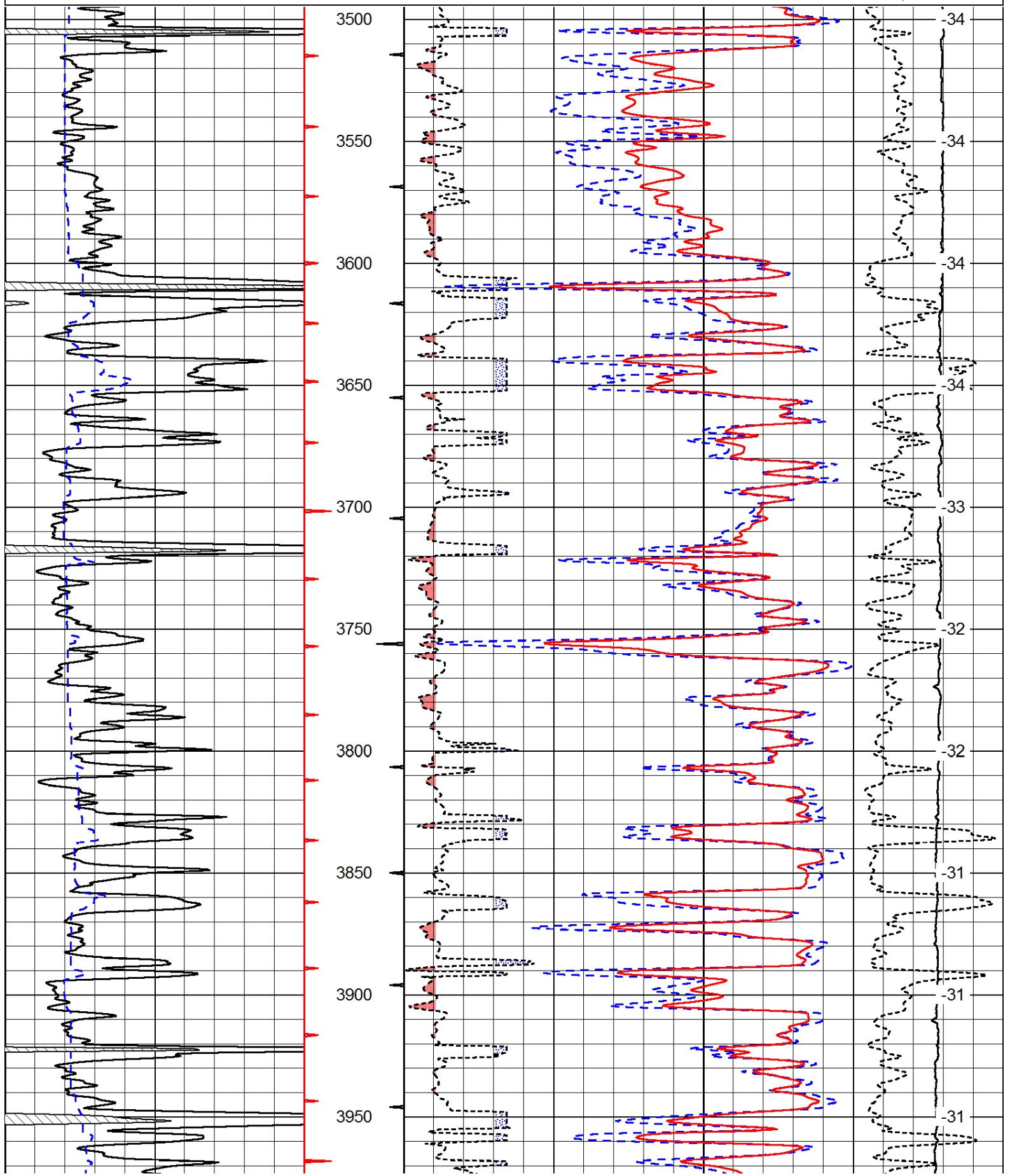
Thank you for using Pioneer Energy Services
www.pioneerenergy.com
 785 625 3858

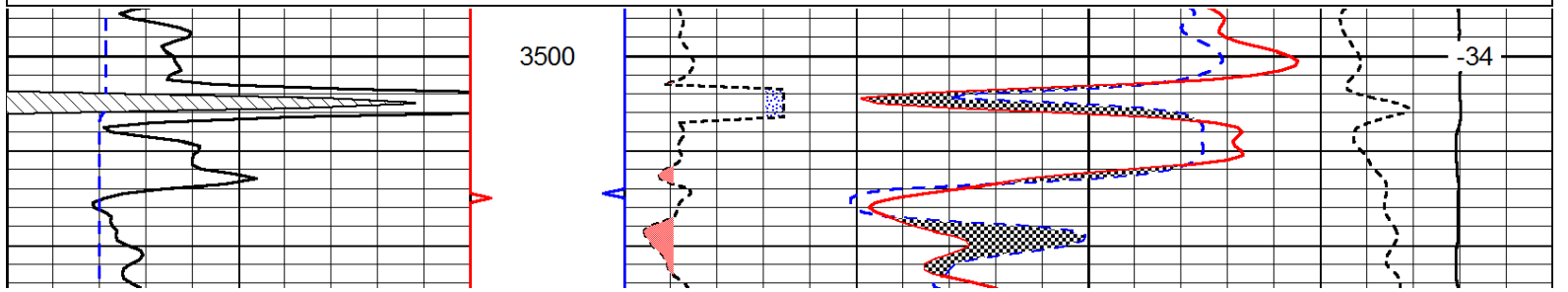
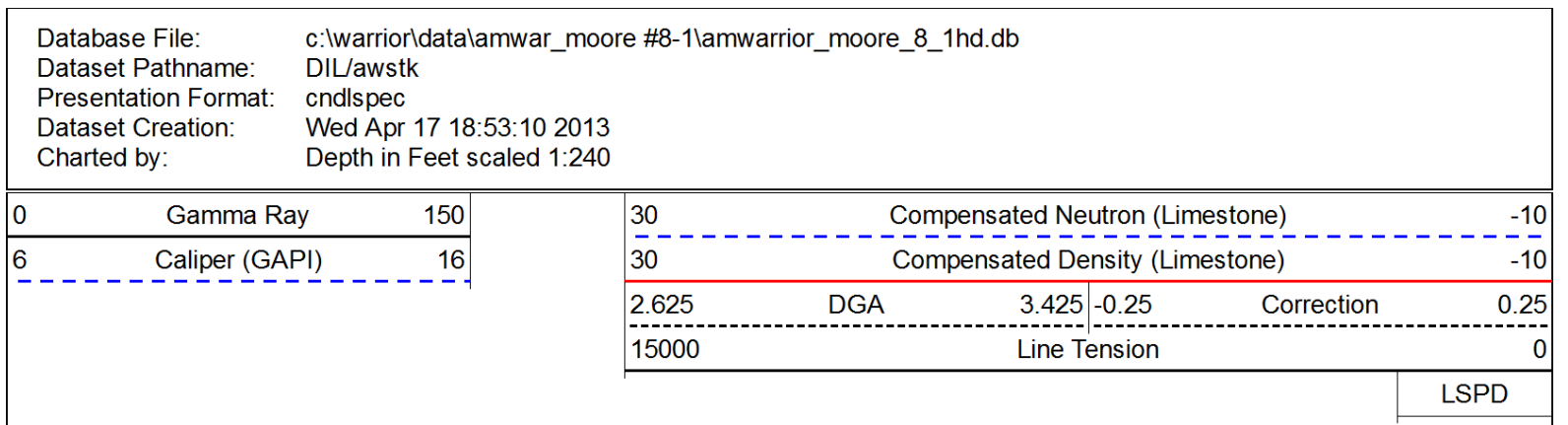
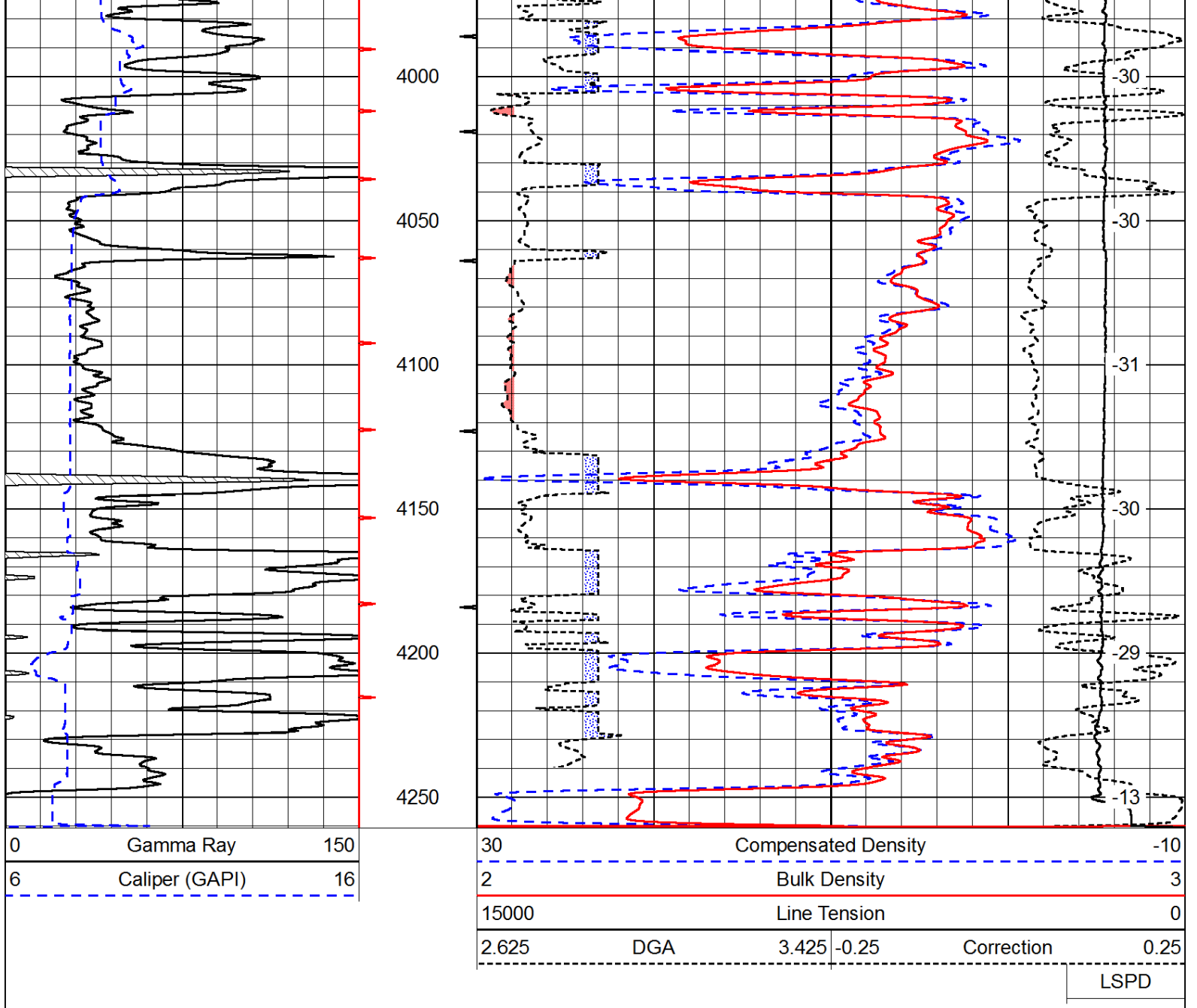
Bazine KS, 1 1/2 South, West Into

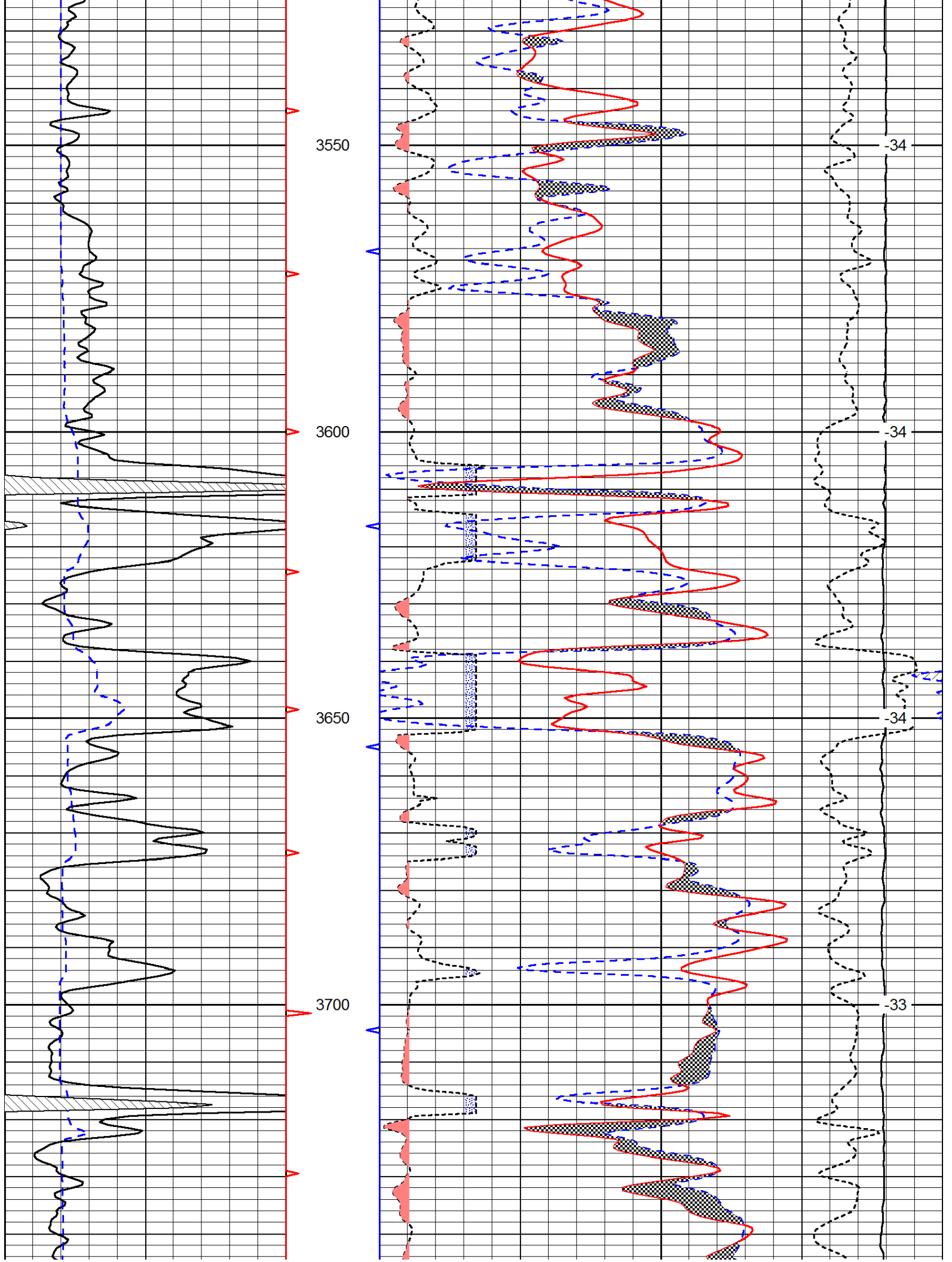
Database File: c:\warrior\data\amwar_moore #8-1\amwarrior_moore_8_1hd.db
 Dataset Pathname: DIL\awstk
 Presentation Format: cdl
 Dataset Creation: Wed Apr 17 18:53:10 2013
 Charted by: Depth in Feet scaled 1:600

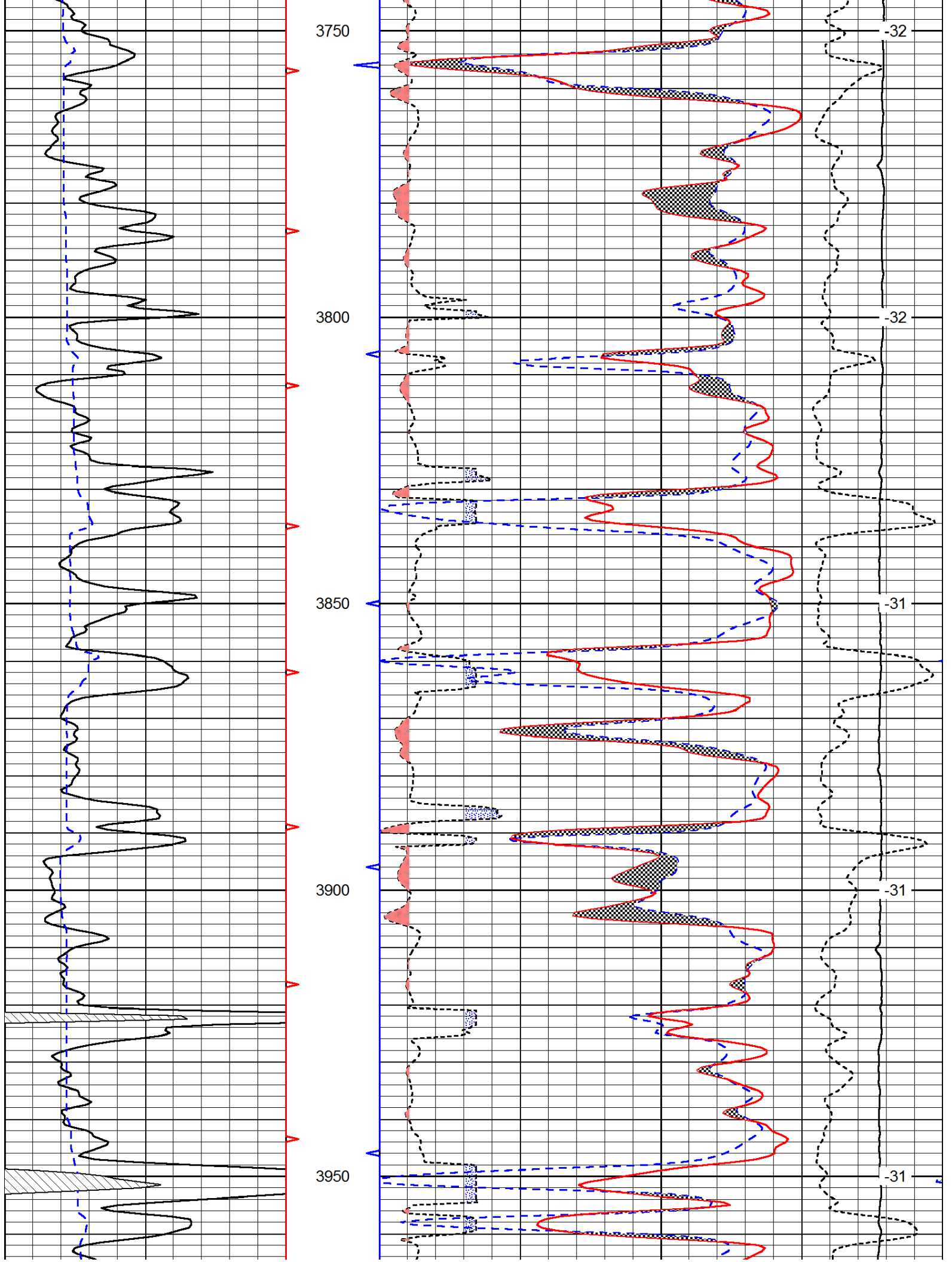
0	Gamma Ray	150
6	Caliper (GAPI)	16

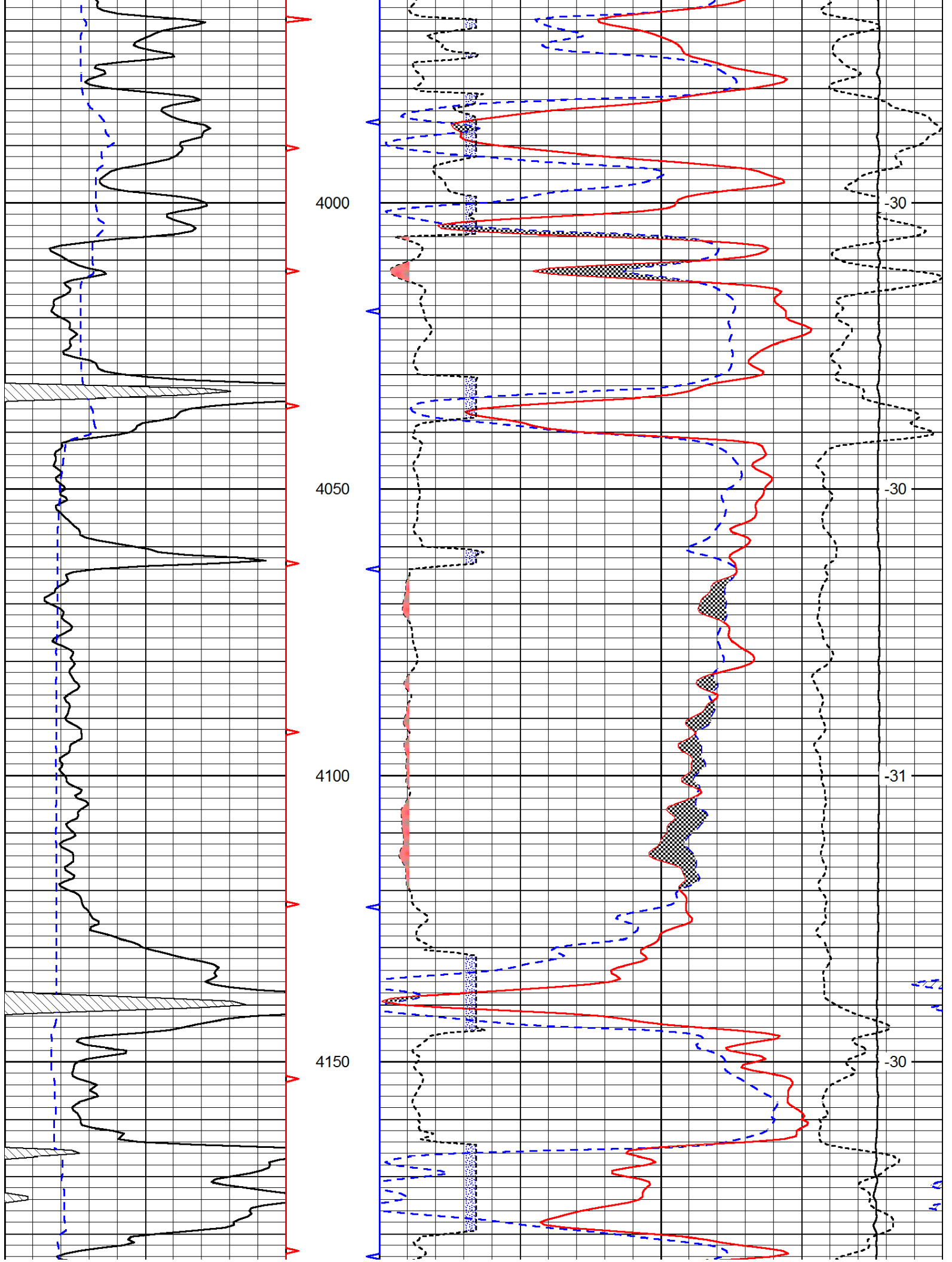
30	Compensated Density		-10
2	Bulk Density		3
15000	Line Tension		0
2.625	DGA	3.425 -0.25	Correction 0.25
LSPD			

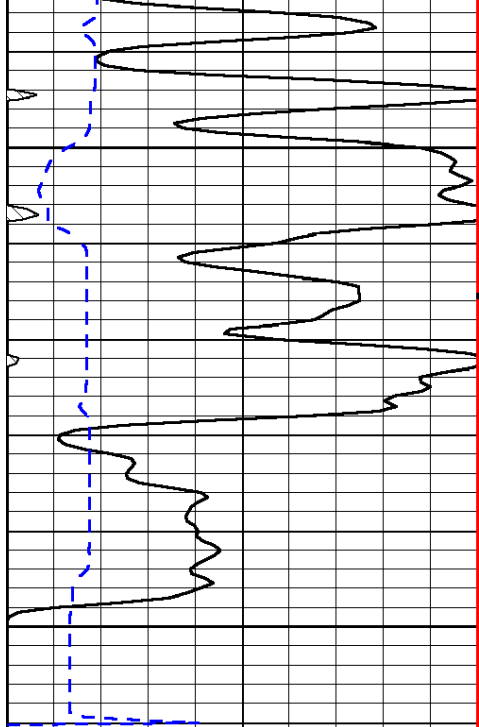




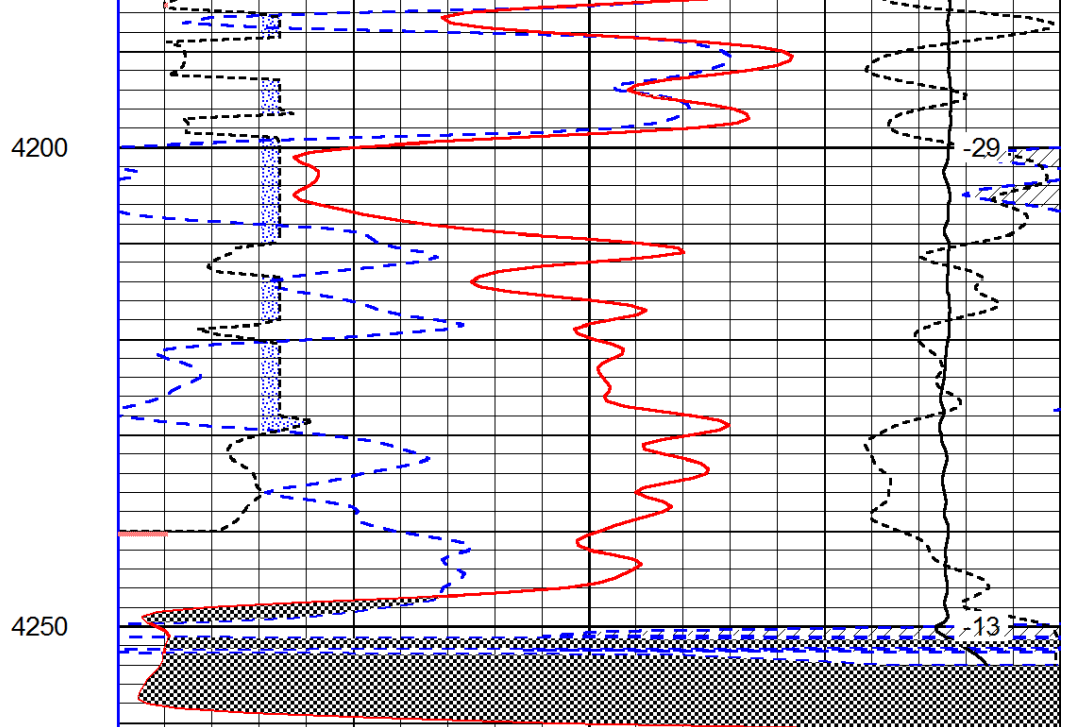








0	Gamma Ray	150
6	Caliper (GAPI)	16



30	Compensated Neutron (Limestone)	-10
30	Compensated Density (Limestone)	-10
2.625	DGA	3.425 -0.25 Correction 0.25
15000	Line Tension	0

LSPD