



**Sonic Cement  
Bond Log**

Pioneer Energy Services

API No.

15-053-21286-00-00

Company **Pauley Oil**

Well **Katrina No. 2**

Field

County **Ellsworth**

State **Kansas**

Location

NW-NW-SE-SW  
1300' FSL & 1610' FWL

Other Services

GRN

Sec: 15 Twp: 16 S Rge: 10 W

Elevation

Permanent Datum Ground Level Elevation 1867  
 Log Measured From Kelly Bushing 13 Ft. Above Perm. Datum  
 Drilling Measured From Kelly Bushing

K.B. 1880  
 D.F. 1880  
 G.L. 1867

Run Number	One	
Date Survey	04/22/2013	
Date Cementing	03/20/2013	
Type Cementing Operation	Primary	
Depth Driller	3600	
Depth Logger	3407	
Logged Interval	3406 to 0	
Casing Driller	5.5 @ TD	@
Float Collar -- D.V. Tool		////
Squeeze Depth		////
Amount & Type Cement		////
Amount & Type Admix		////
Type Fluid In Hole	Water	
Fluid Level	Full	
Salinity PPM CL	////	
Weight lb/gal -- Vis.	////	////
Approx. Logged Cement Top	2350	
Calculated Cement Top	////	
Max. Hole Temperature	112	
Tool No.	RBT2-6	
Spacing Recorded	3'-5"	
Equipment -- Location	18 D. Hagan	Hays
Recorded By	Gary Pauley	
Witnessed By		

<<< Fold Here >>>

All interpretations are opinions based on inferences from electrical or other measurements and we cannot and do not guarantee the accuracy or correctness of any interpretation, and we shall not, except in the case of gross or willful negligence on our part, be liable or responsible for any loss, costs, damages, or expenses incurred or sustained by anyone resulting from any interpretation made by any of our officers, agents or employees. These interpretations are also subject to our general terms and conditions set out in our current Price Schedule.

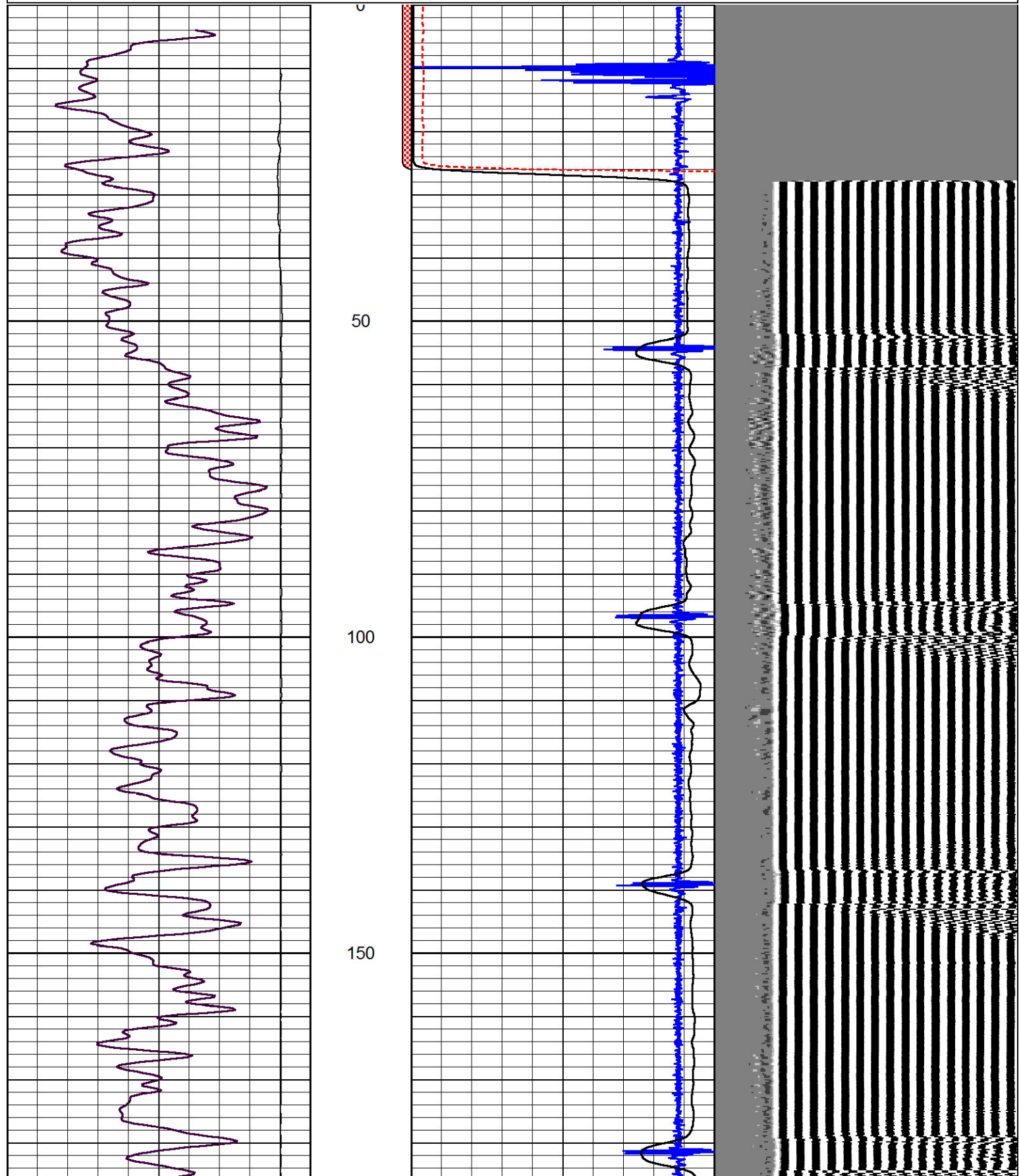
Comments

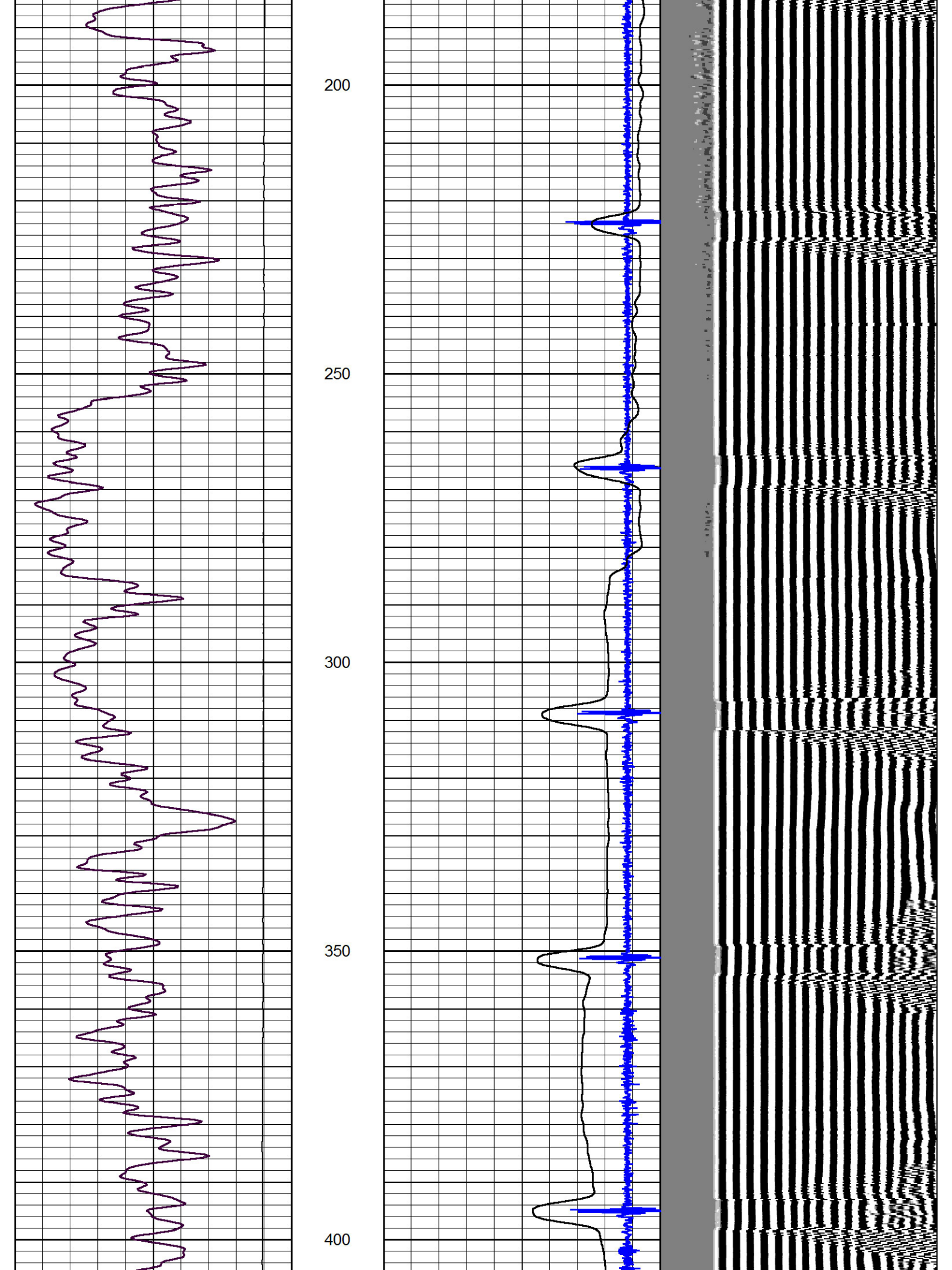
Thank you for using Pioneer Energy Services  
785.625.3858

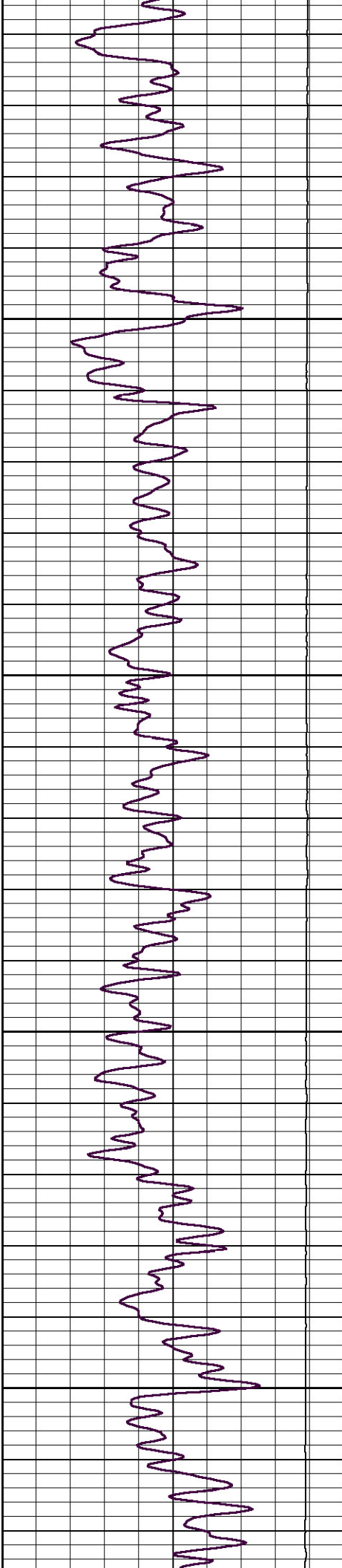
Wilson, Ks. South on Black Top to Ave P.  
3 1/2 East, North into

Database File: pauleyoil\_katrina\_2.db  
 Dataset Pathname: grcblgrn/pass3  
 Presentation Format: cblgr  
 Dataset Creation: Mon Apr 22 12:58:13 2013 by Log 7.0 B1  
 Charted by: Depth in Feet scaled 1:240

0	Gamma Ray	150	amp3ft	5	Casing Collars	-0.7	200	wvf5ft	1200
			(mV)	0	Pipe Amplitude (mV)	100			
			-100 10	0	Amplified Amplitude (mV)	20			





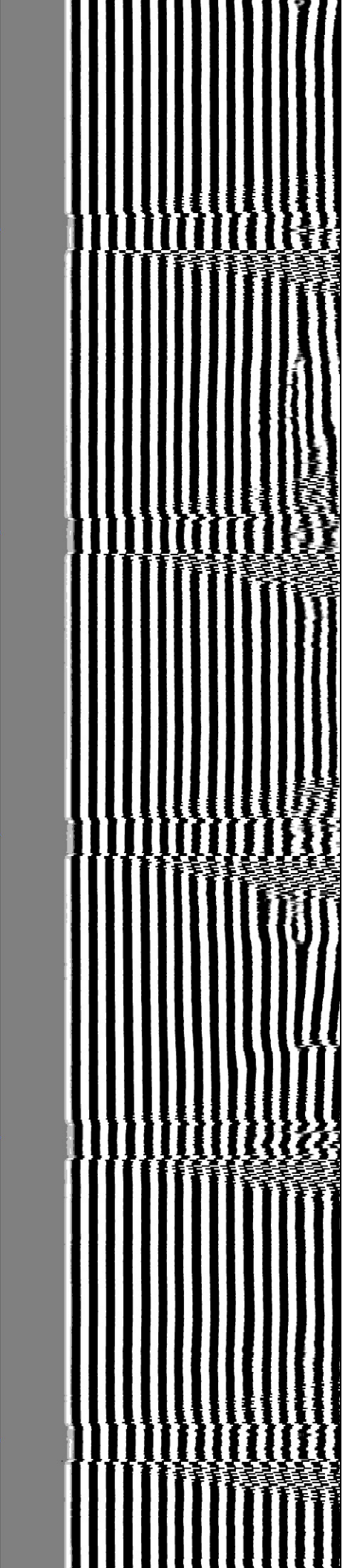
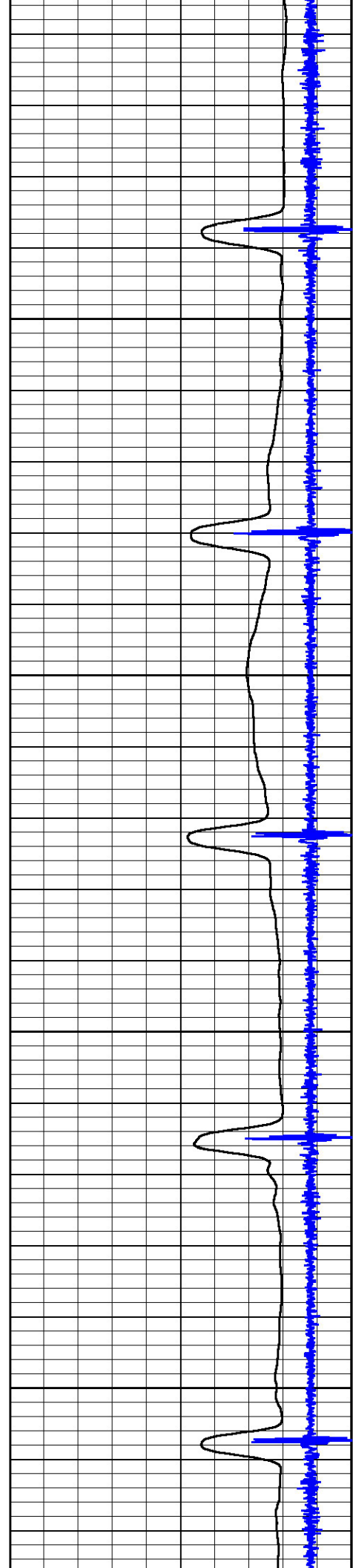


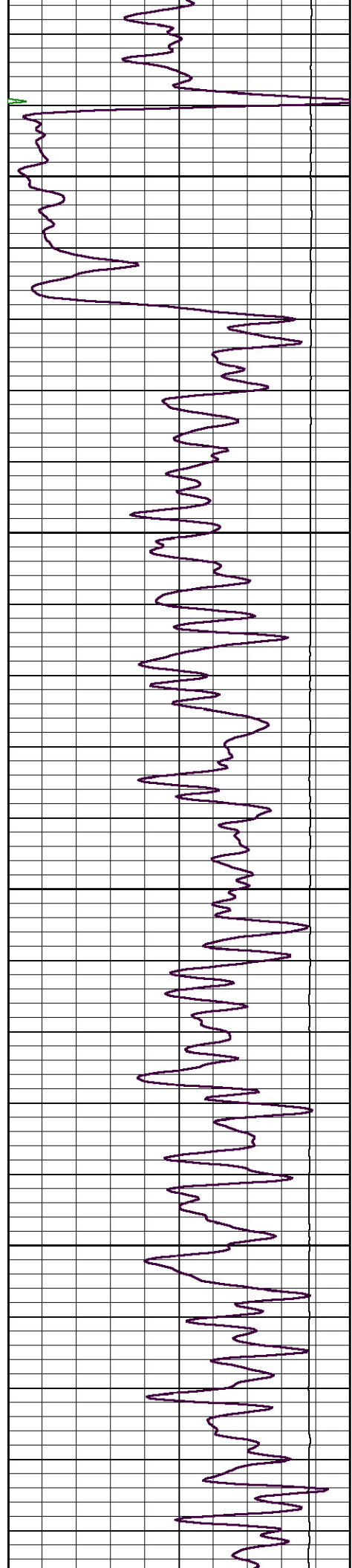
450

500

550

600



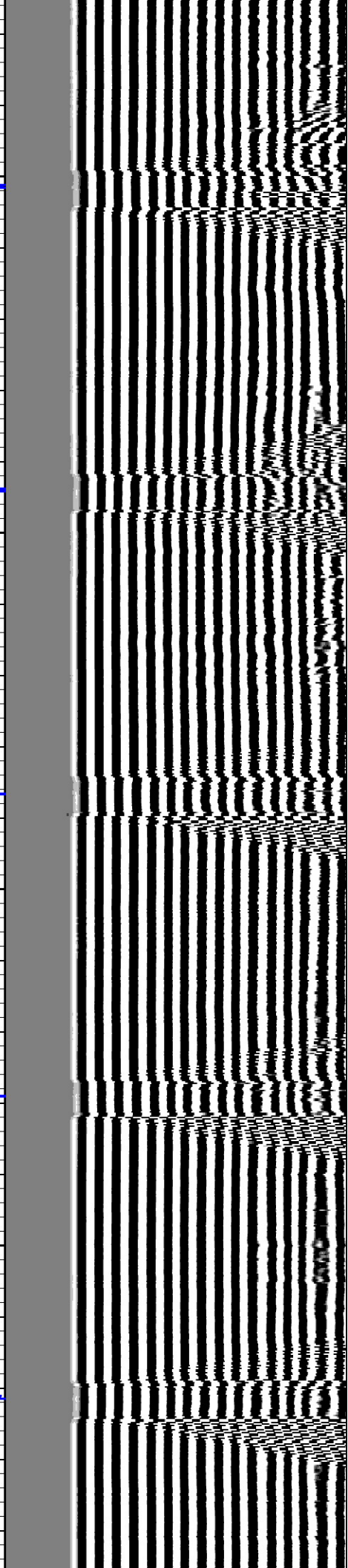
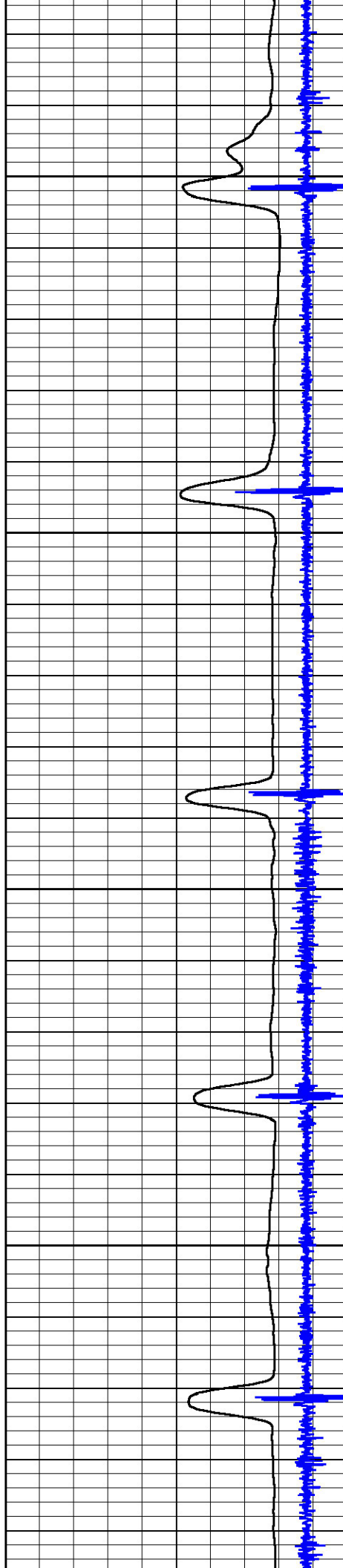


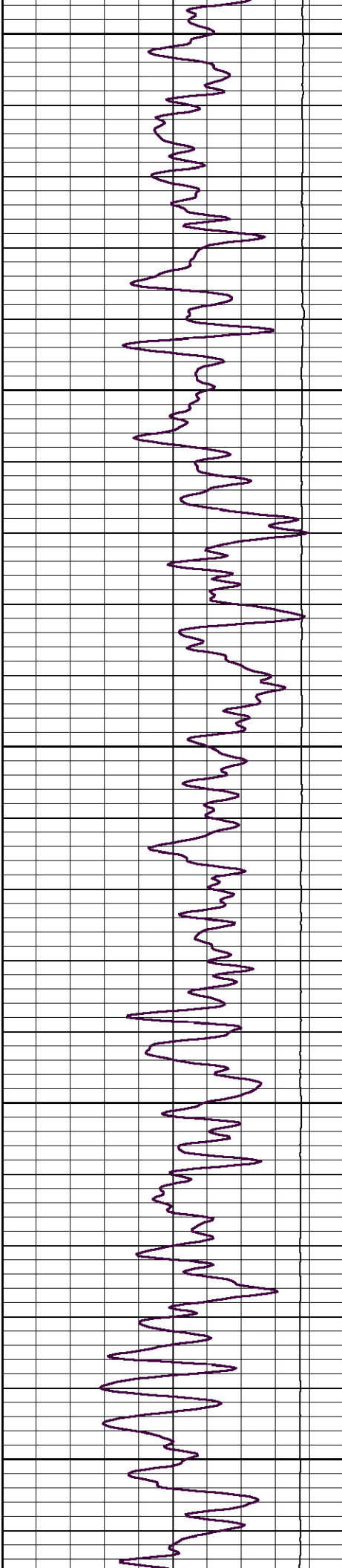
650

700

750

800





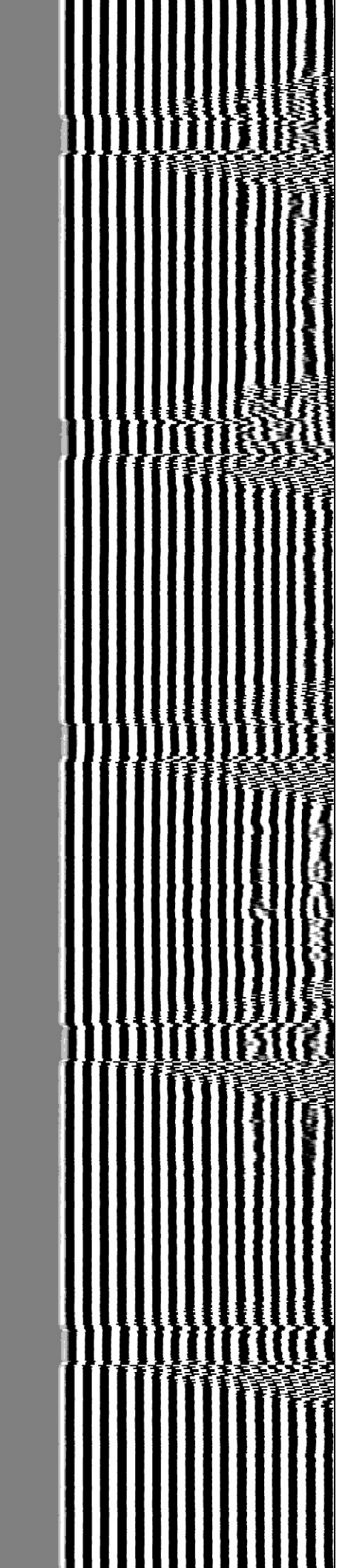
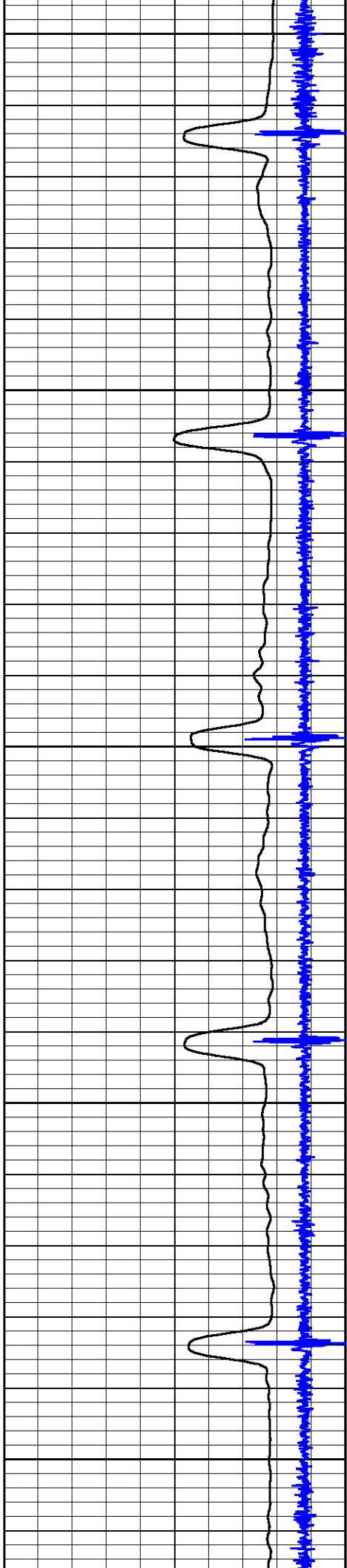
850

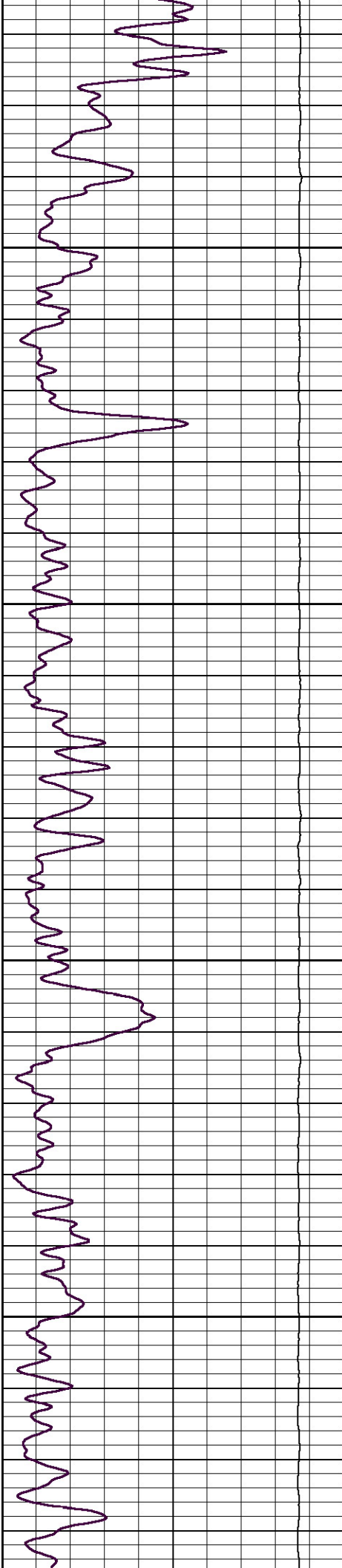
900

950

1000

1050



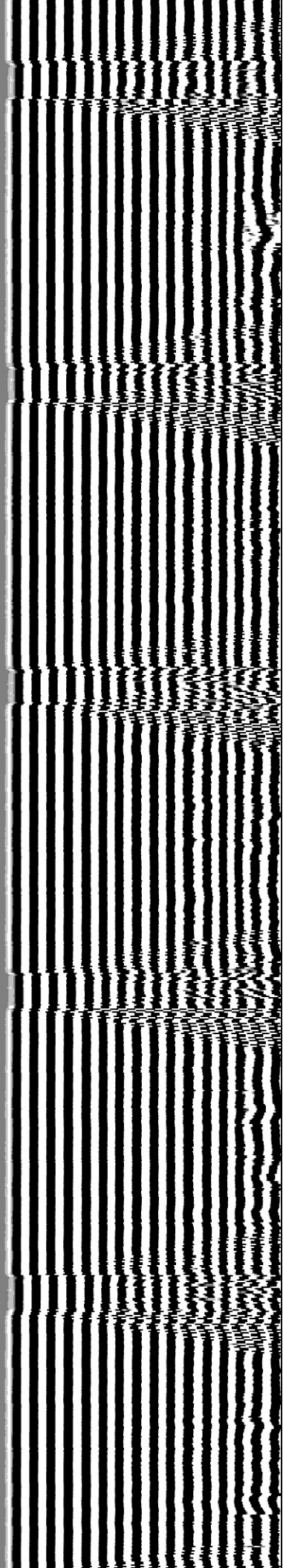
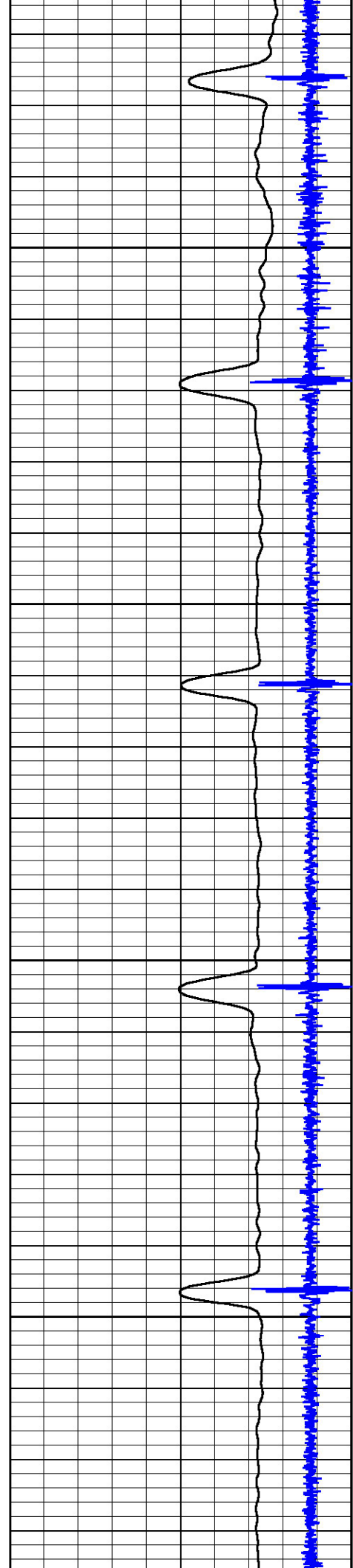


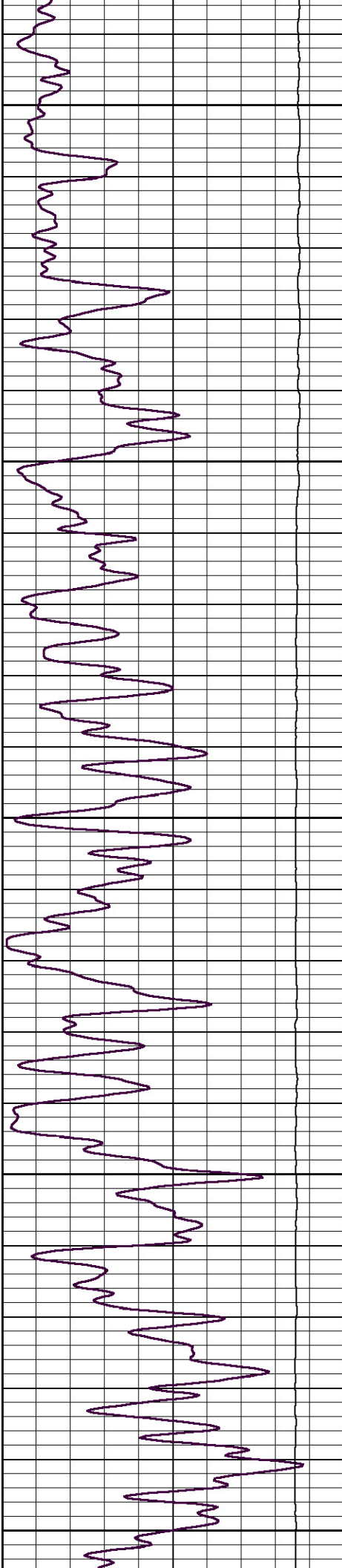
1100

1150

1200

1250





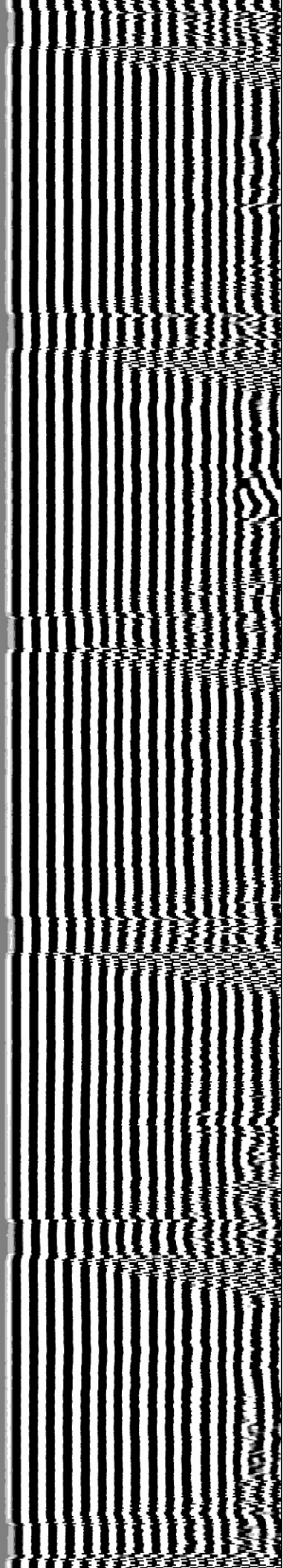
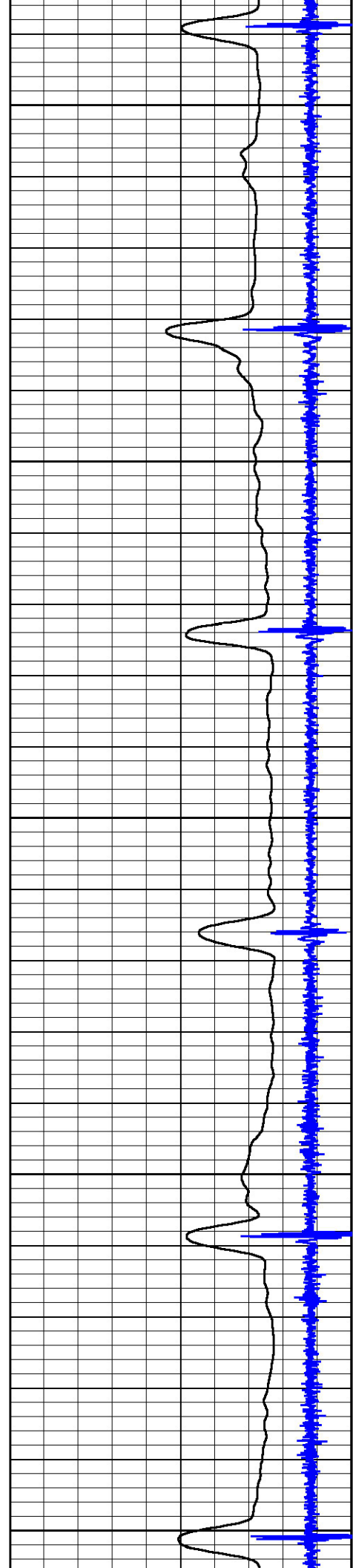
1300

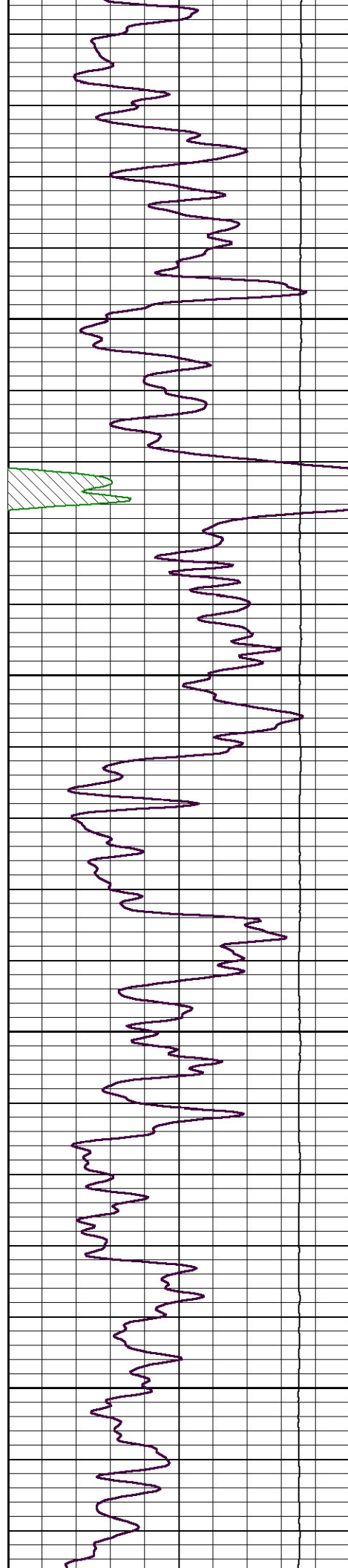
1350

1400

1450

1500



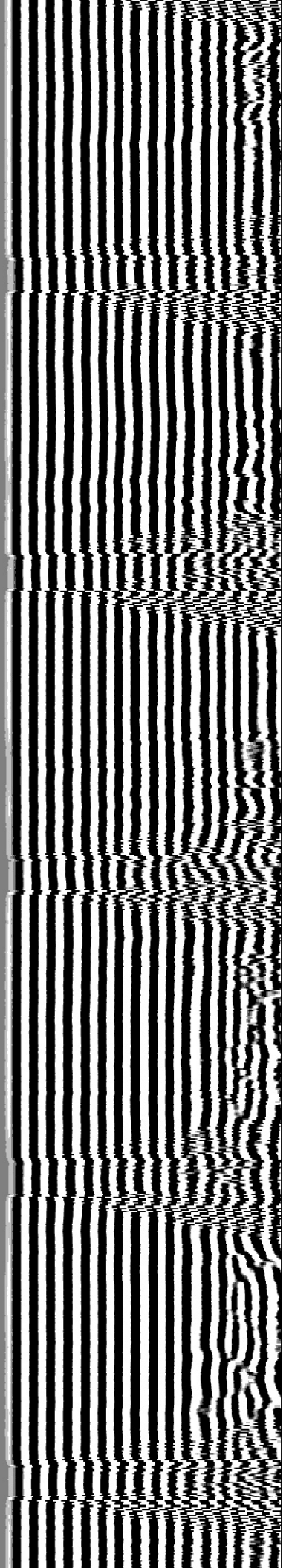
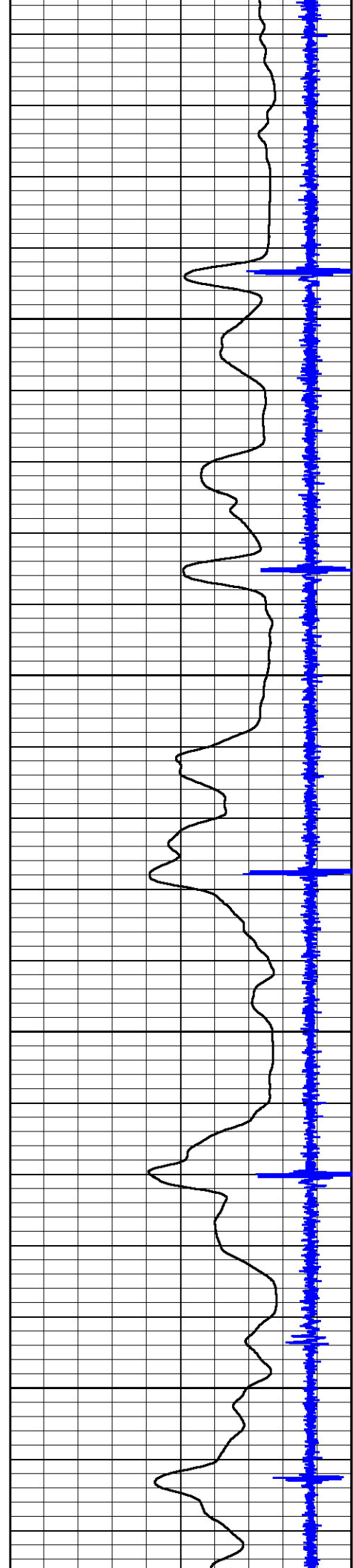


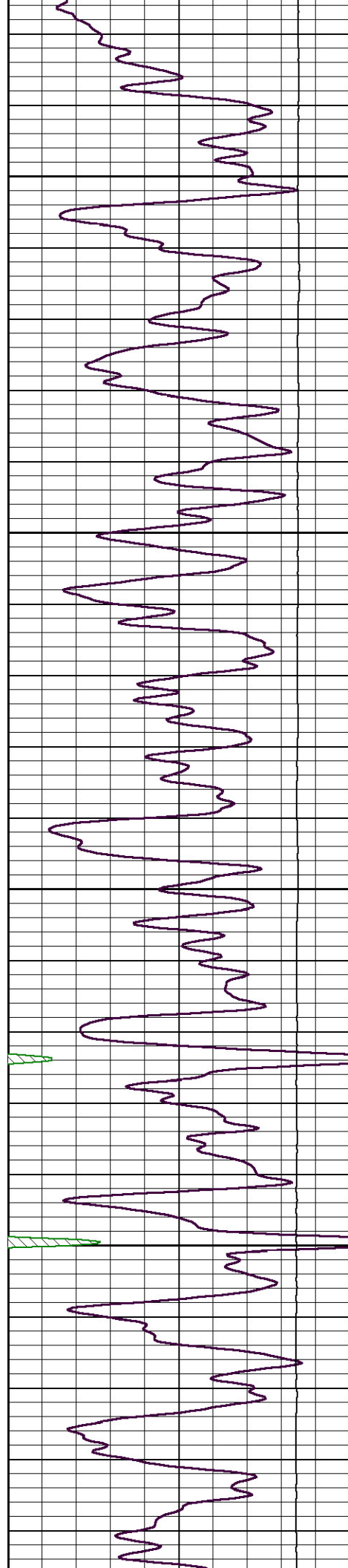
1550

1600

1650

1700



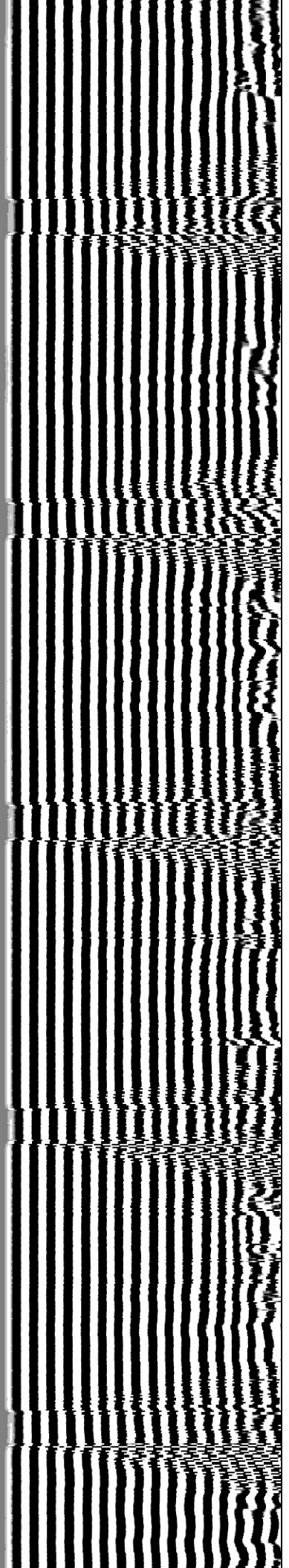
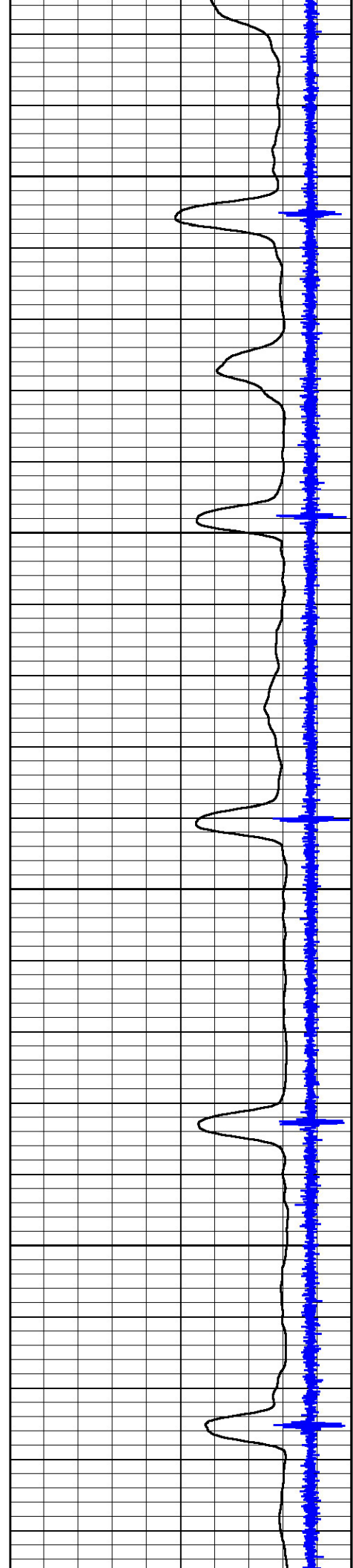


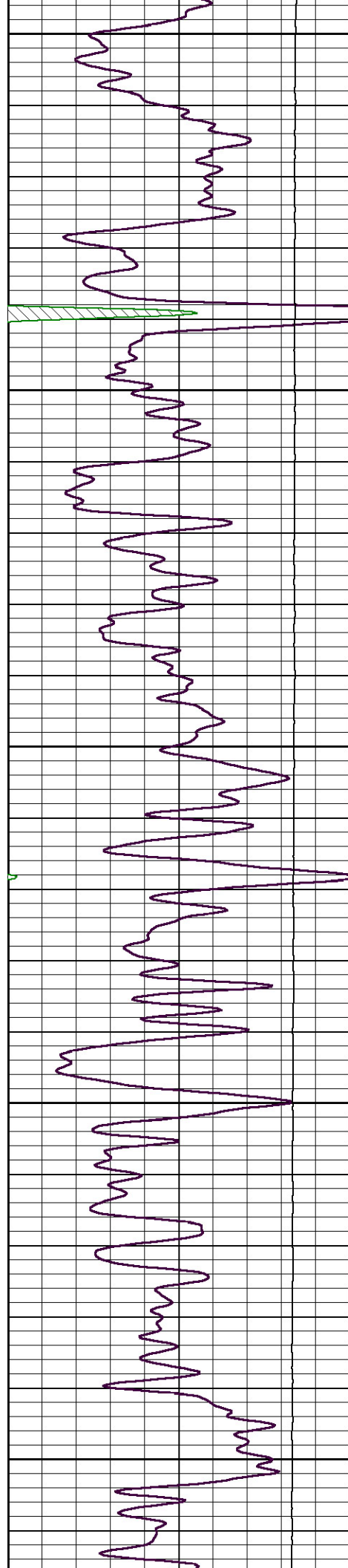
1750

1800

1850

1900





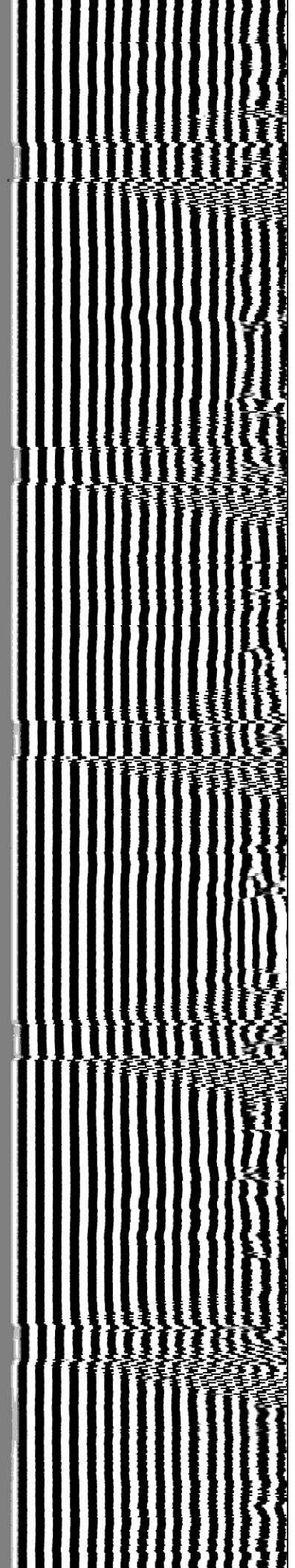
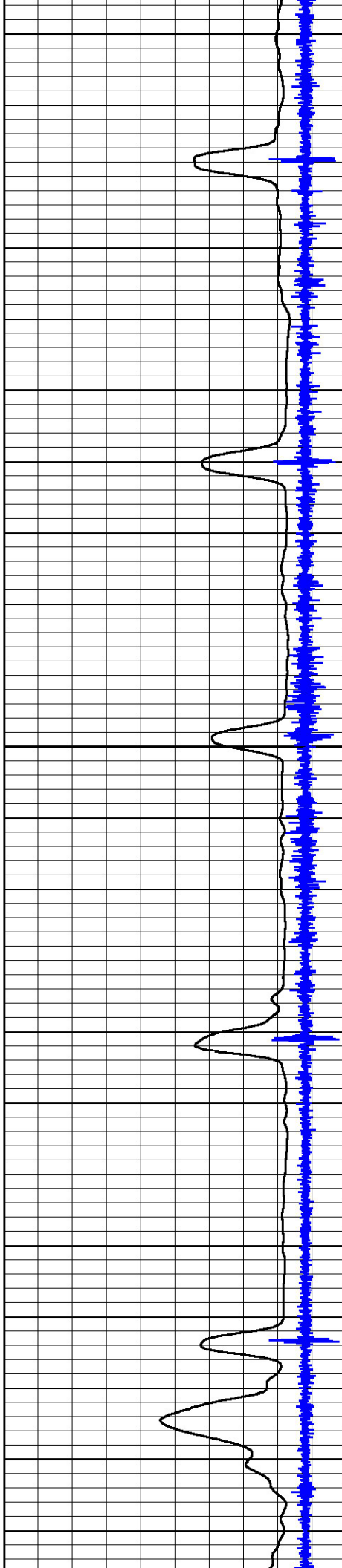
1950

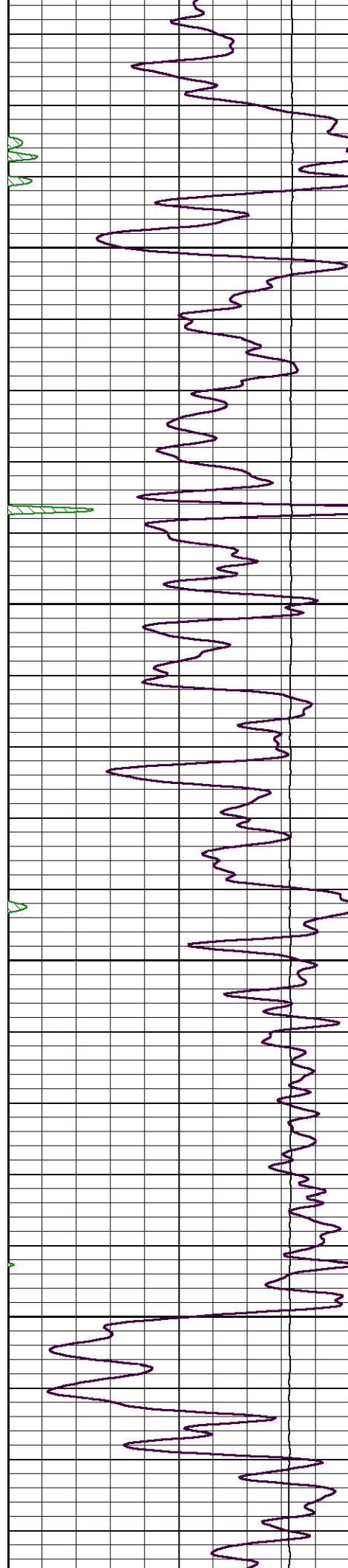
2000

2050

2100

2150





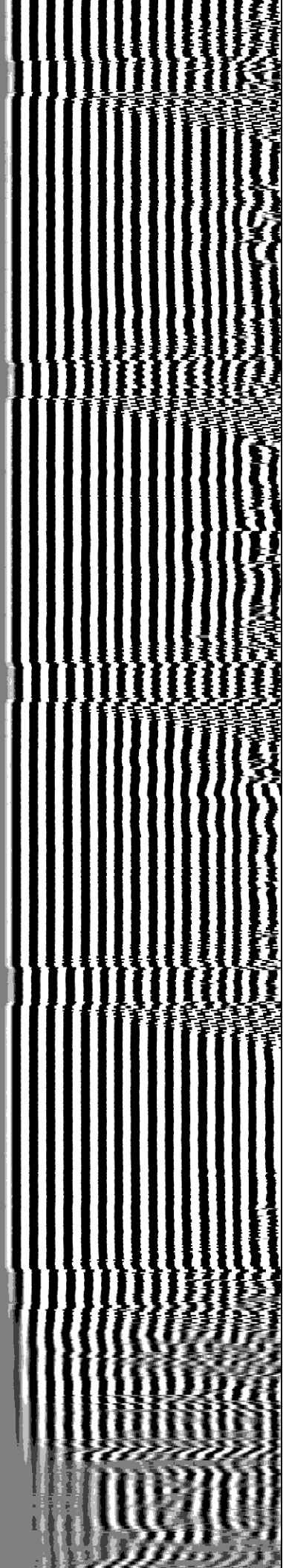
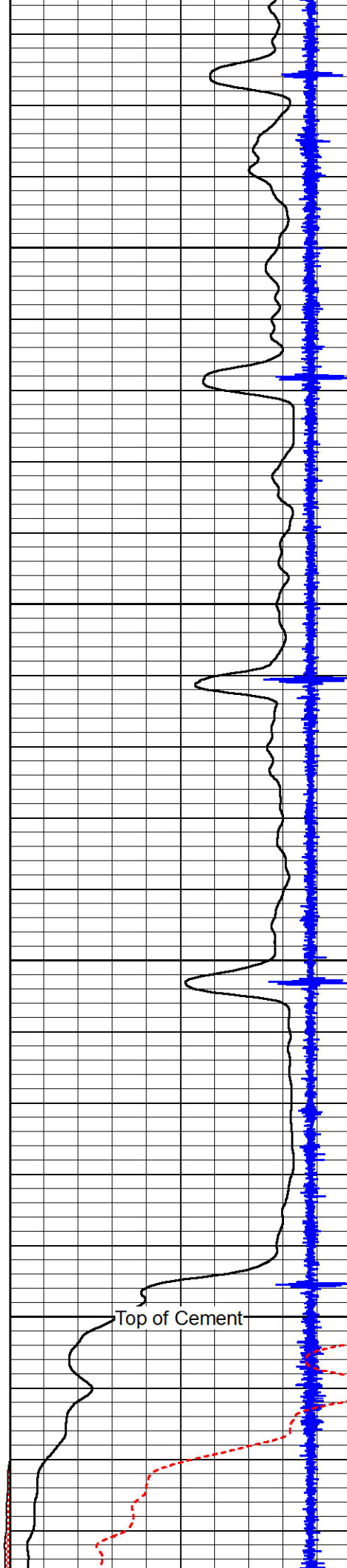
2200

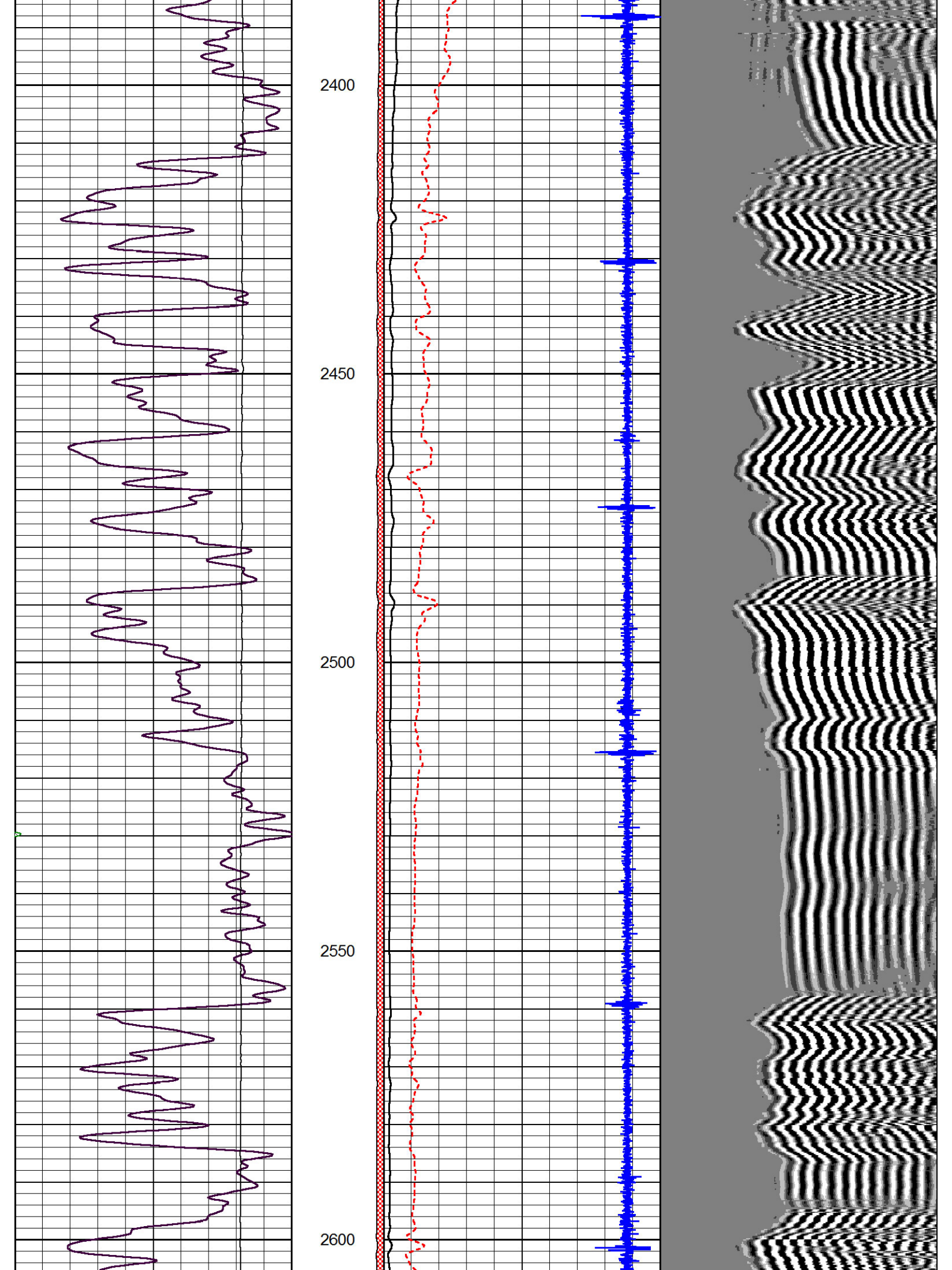
2250

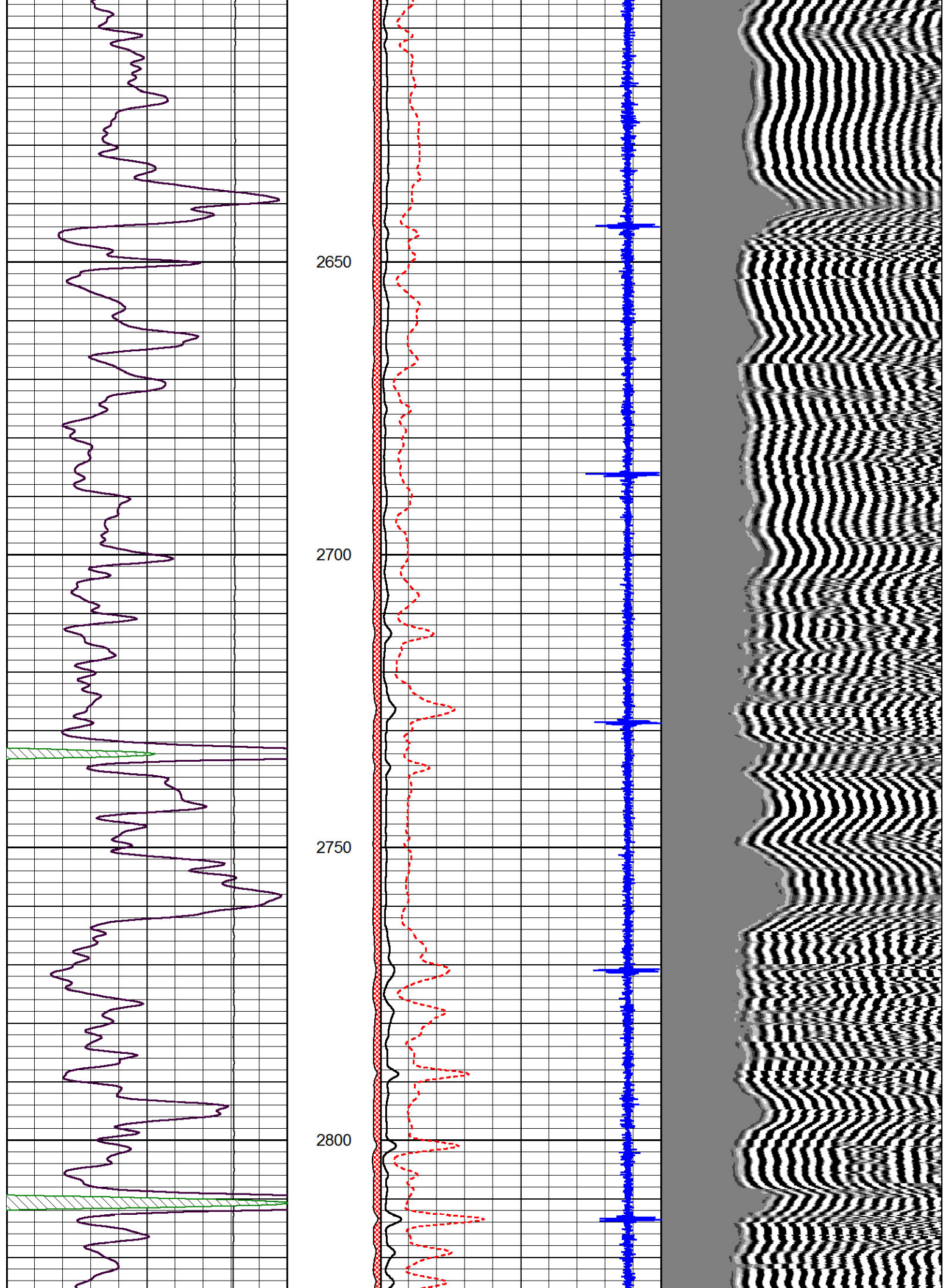
2300

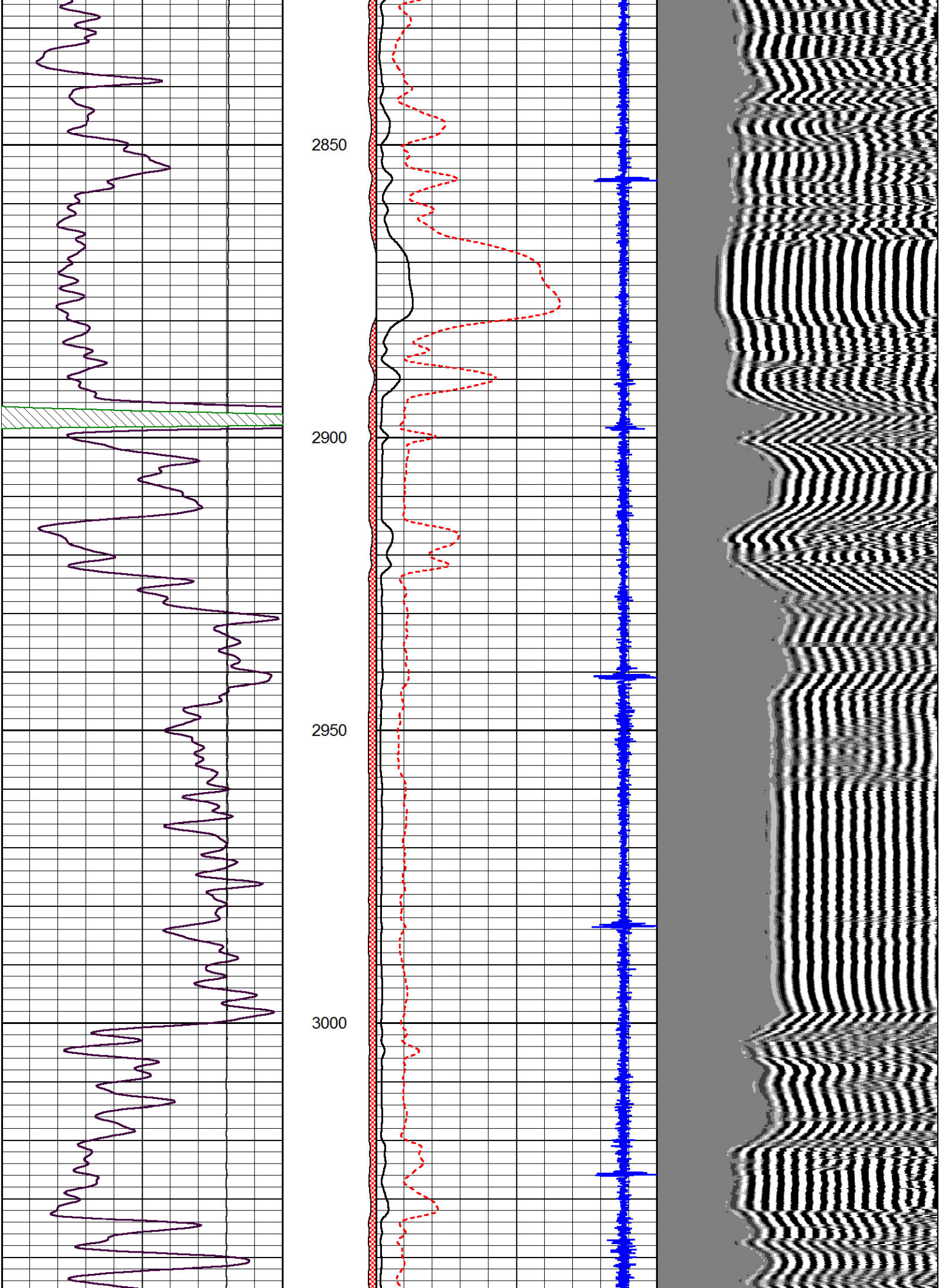
2350

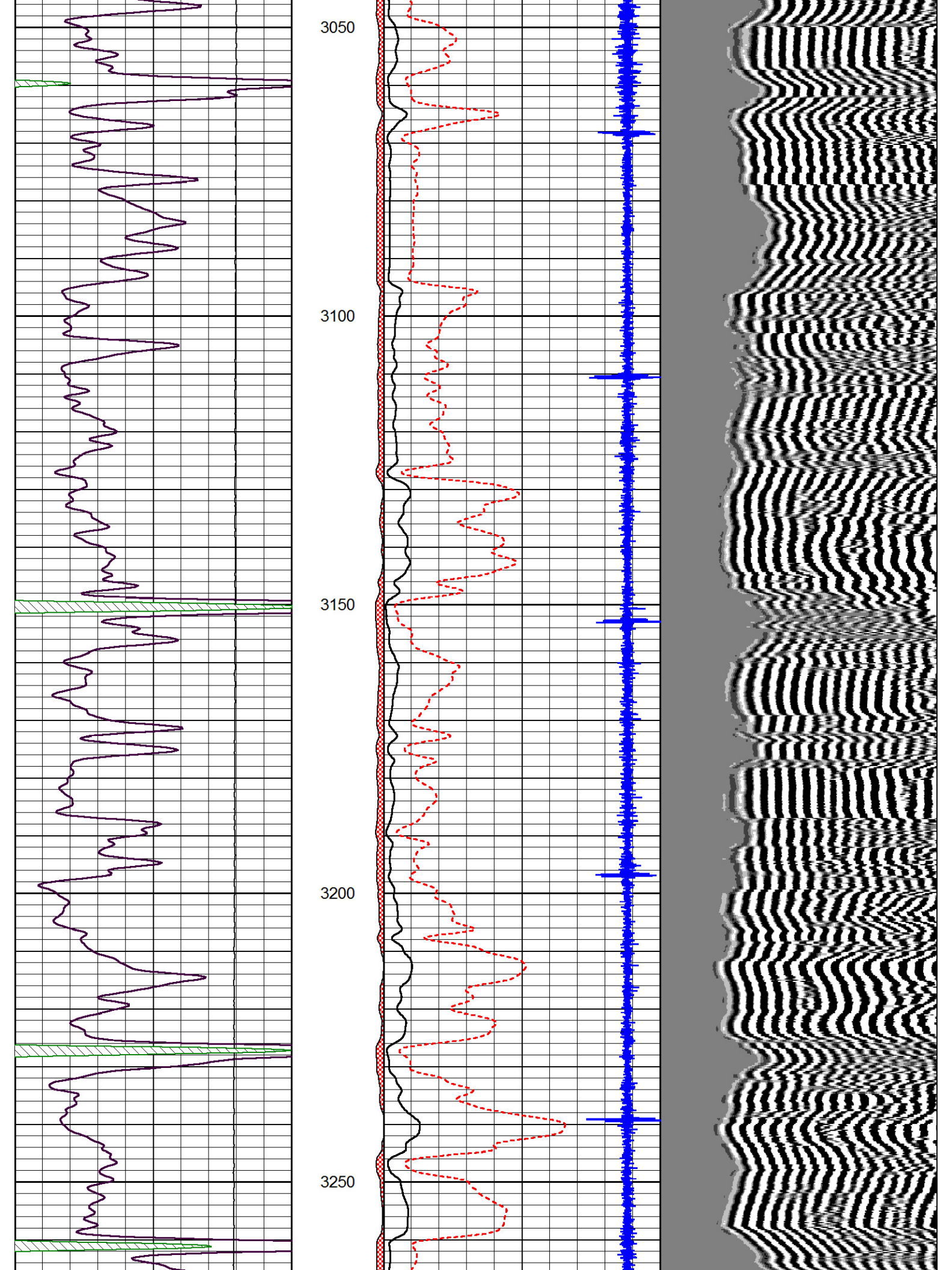
Top of Cement

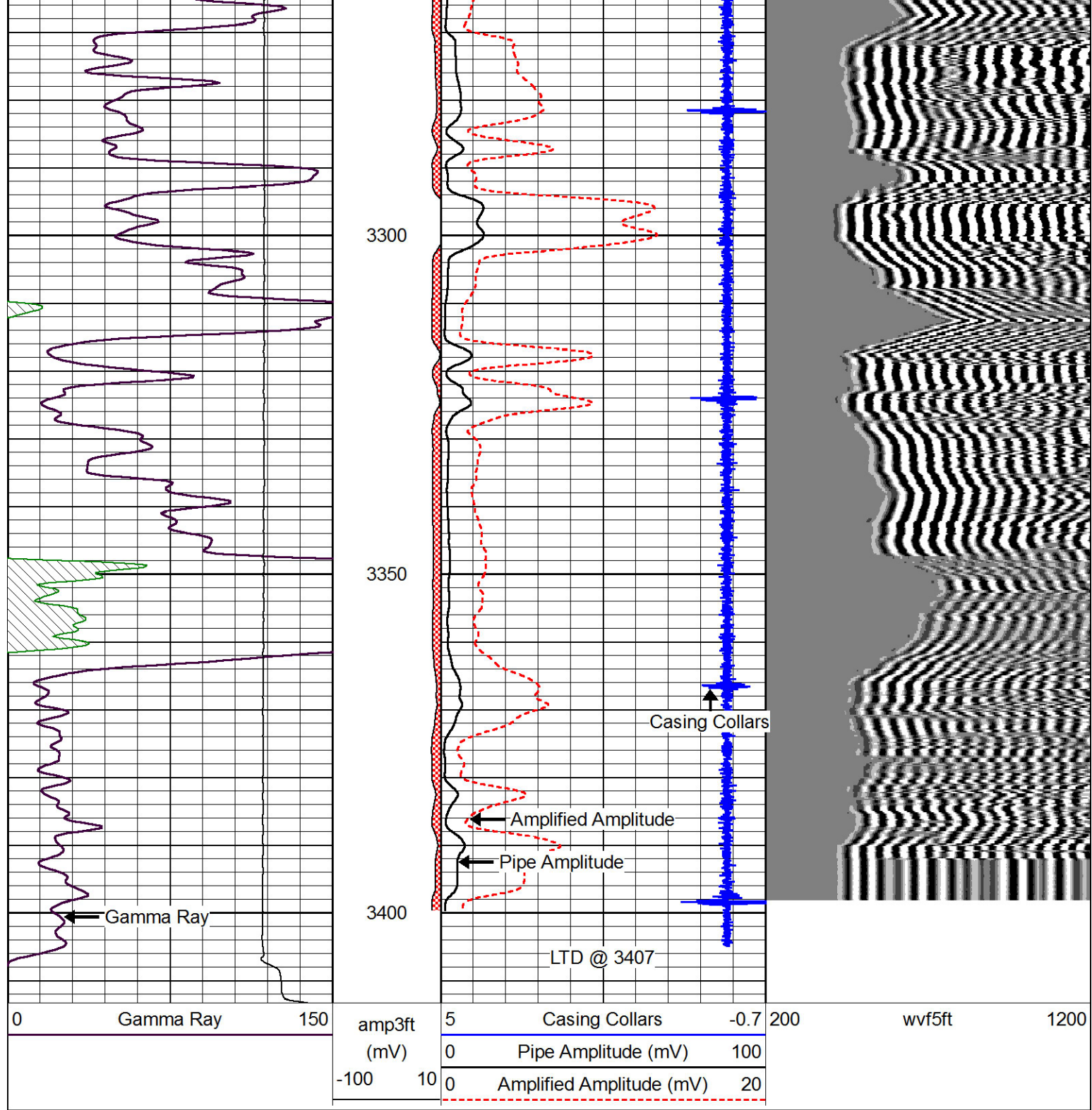












# Repeat Section

Database File: pauleyoil\_katrina\_2.db  
 Dataset Pathname: grcblgrn/pass2  
 Presentation Format: cbldr  
 Dataset Creation: Mon Apr 22 12:45:24 2013 by Log 7.0 B1  
 Charted by: Depth in Feet scaled 1:240

