

**COMPLETION
& PRODUCTION
SERVICES CO.**

**CORRELATION
LOG**

Company	RITCHIE EXPLORATION, INC.	
Well	WYRILL "P" # 2 ERW	
Field		
County	NORTON	
State	KANSAS	
Company	RITCHIE EXPLORATION, INC.	
Well	WYRILL "P" # 2 ERW	
Field		
County	NORTON	State
		KANSAS
Location:	API #:	Other Services
	NE-SW-SW	
	SEC 34 TWP 5S RGE 23W	
Permanent Datum	GROUND LEVEL	Elevation
Log Measured From	KELLY BUSHING 10' A.G.L.	2317
Drilling Measured From	KELLY BUSHING	K.B. 2327 D.F. 2324 G.L. 2317

Date	12-3-12			
Run Number	ONE			
Depth Driller	3740			
Depth Logger	3669			
Bottom Logged Interval	3668			
Top Log Interval	3200			
Open Hole Size				
Type Fluid				
Density / Viscosity				
Max. Recorded Temp.				
Estimated Cement Top				
Time Well Ready				
Time Logger on Bottom				
Equipment Number	0916			
Location	HAYS KANSAS			
Recorded By	THOMASON			
Witnessed By	TOMMY ATKINS			
Borehole Record				
Run Number	Bit	From	To	Size
Tubing Record				
		Weight	From	To
Casing Record				
Surface String	Size	Wgt/Ft	Top	Bottom
Prot. String				
Production String	4-1/2"			
Liner				

<<< Fold Here >>>

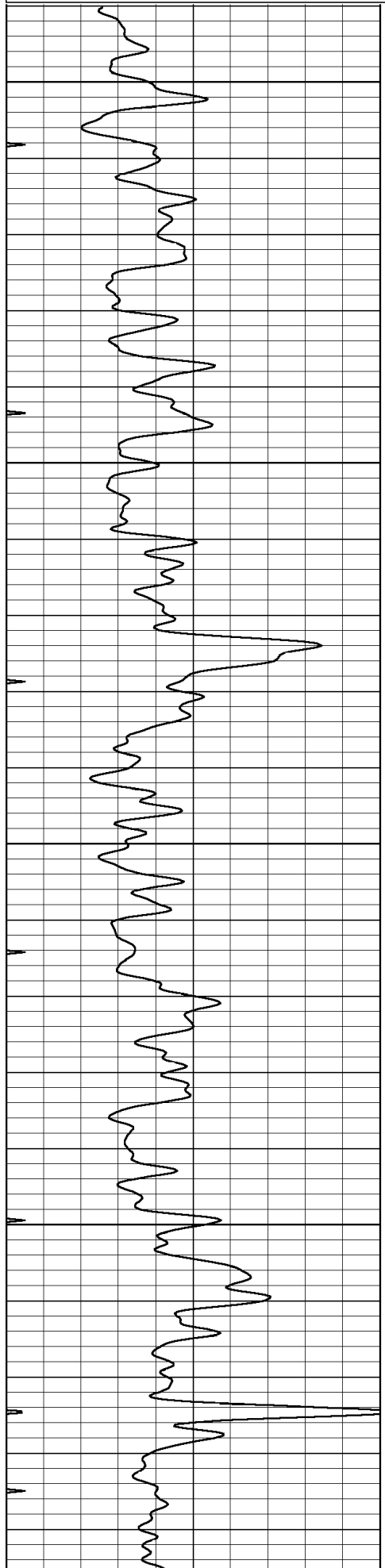
All interpretations are opinions based on inferences from electrical or other measurements and we cannot and do not guarantee the accuracy or correctness of any interpretation, and we shall not, except in the case of gross or willful negligence on our part, be liable or responsible for any loss, costs, damages, or expenses incurred or sustained by anyone resulting from any interpretation made by any of our officers, agents or employees. These interpretations are also subject to our general terms and conditions set out in our current Price Schedule.

Comments

THANK YOU FOR USING NABORS COMPLETION & PRODUCTION SERVERCES

0 Gamma Ray (GAPI) 150

5 CCL -5

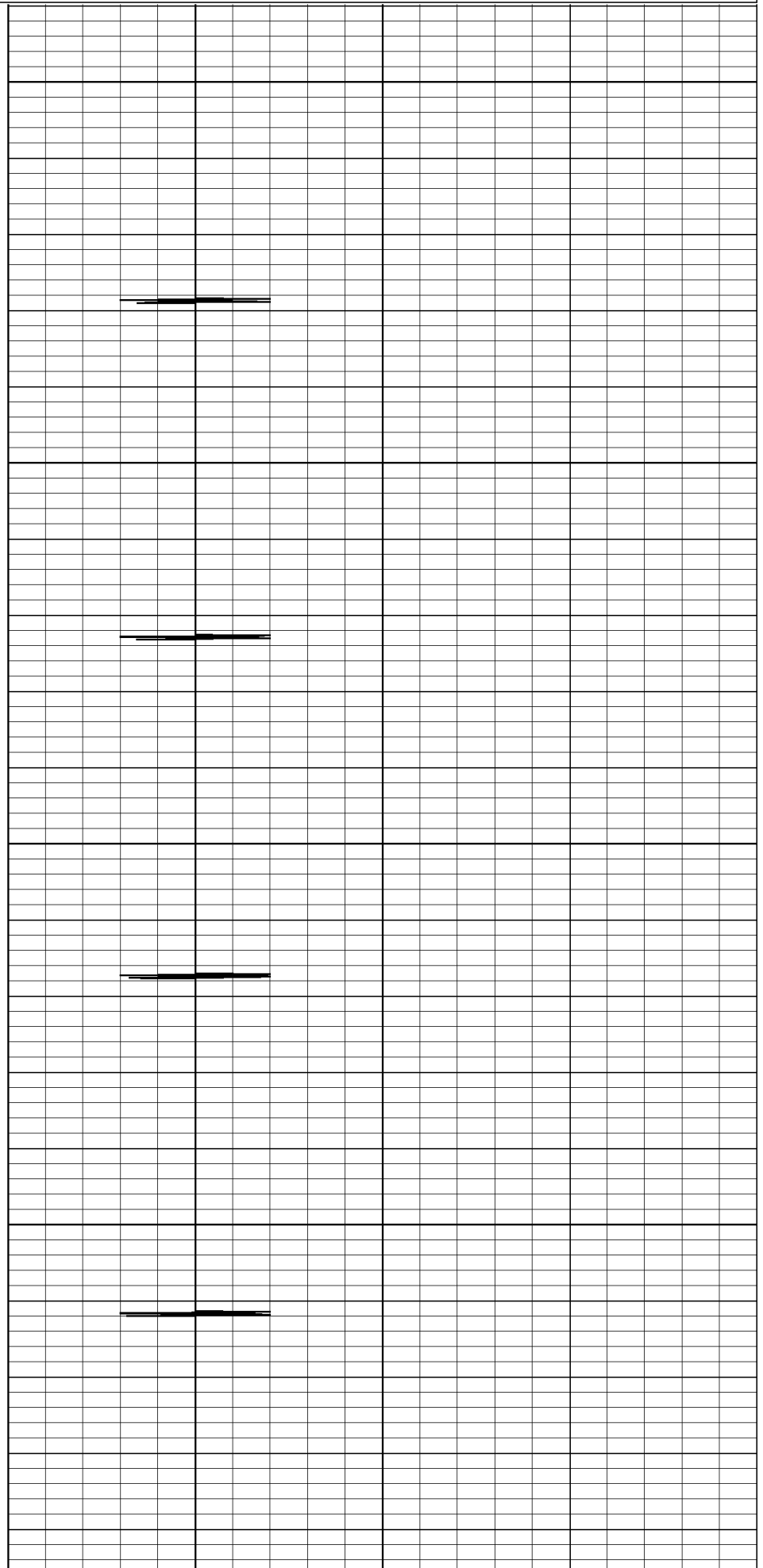


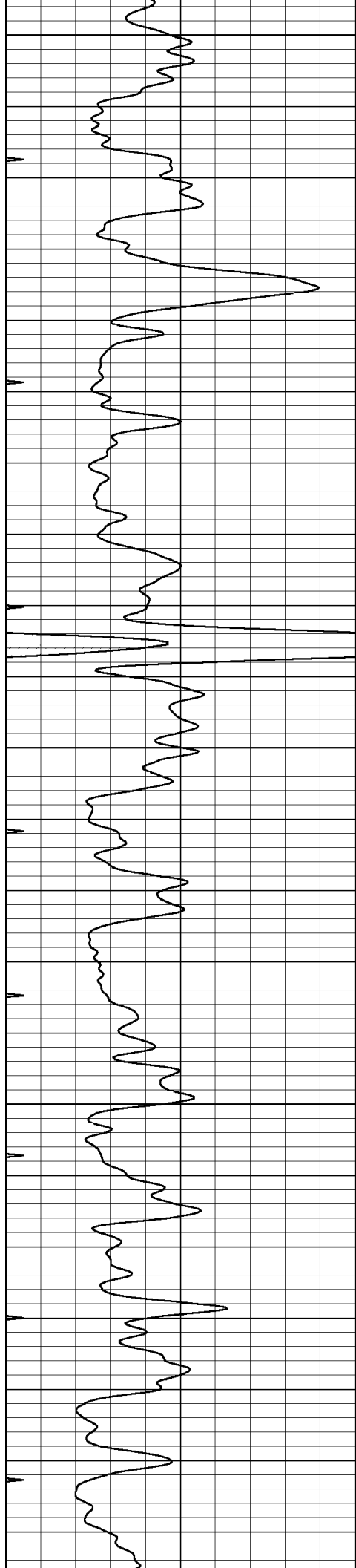
3200

3250

3300

3350





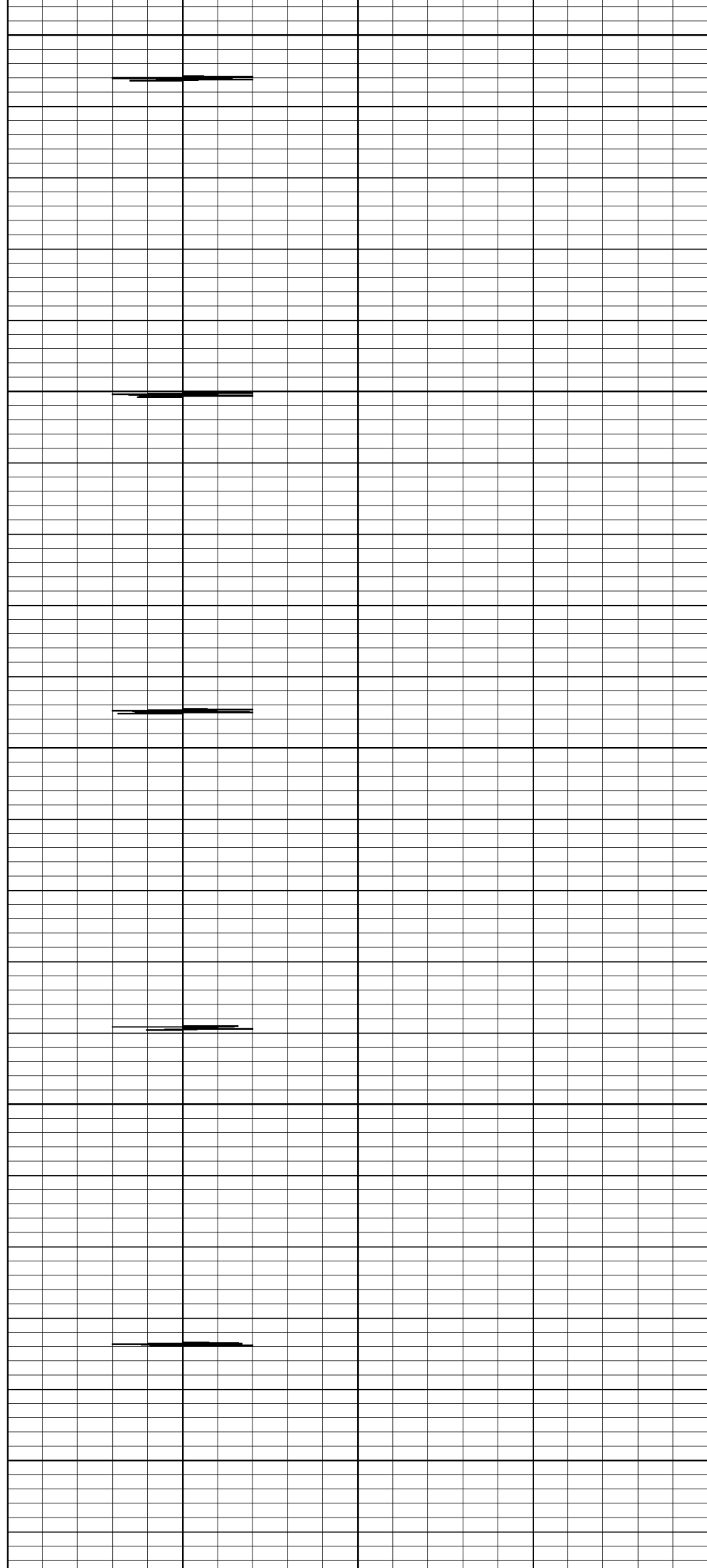
3400

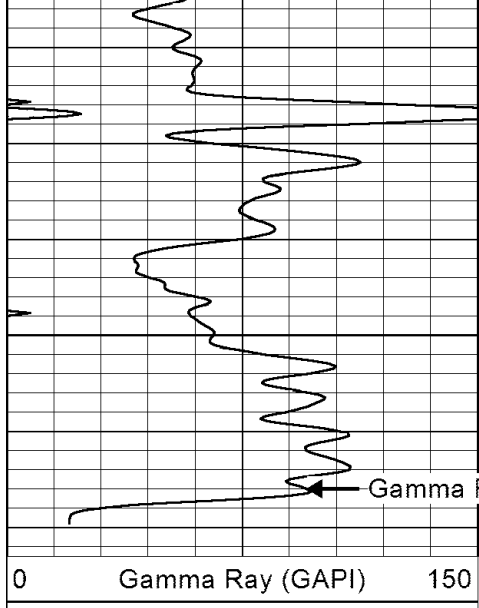
3450

3500

3550

3600





3650

