



**GAMMA RAY
NEUTRON
COMPLETION LOG**

Company		McFADDEN OIL CO.	
Well		HENDRICKS #2	
Field		IOLA	
County		ALLEN	
State		KANSAS	
Location:		AP1 #: 15-001-30614-00-00	
Other Services		4500 FSL & 165' FEL NE SE NE NE	
Permanent Datum		SEC 5 TWP 25S RGE 18E	
Log Measured From		G.L.	
Drilling Measured From		G.L.	
Elevation		970' EST	
K.B.		G.L. 970' EST.	
Date		3-22-2013	
Run Number		1-NEWWELL	
Depth Driller		698'	
Depth Logger		698'	
Top Log Interval		SURFACE	
Bottom Logged Interval		FULL	
Fluid Level		FULL	
Type Fluid		WATER	
Production Casing		2 7/8" @ T.D.	
Max. Recorded Temp.		@	
Estimated Cement Top		@	
Calculated Cement Top		@	
Amount & Type Cement		@	
Amount & Type Admix		@	
Drilling Contractor		COMPANY TOOLS	
Equipment Number		107	
Location		UDEN, D.	
Recorded By		McFADDEN, L.	
Witnessed By			

<<< Fold Here >>>

All interpretations are opinions based on inferences from electrical or other measurements and we cannot and do not guarantee the accuracy or correctness of any interpretation, and we shall not, except in the case of gross or willful negligence on our part, be liable or responsible for any loss, costs, damages, or expenses incurred or sustained by anyone resulting from any interpretation made by any of our officers, agents or employees. These interpretations are also subject to our general terms and conditions set out in our current Price Schedule.

Comments

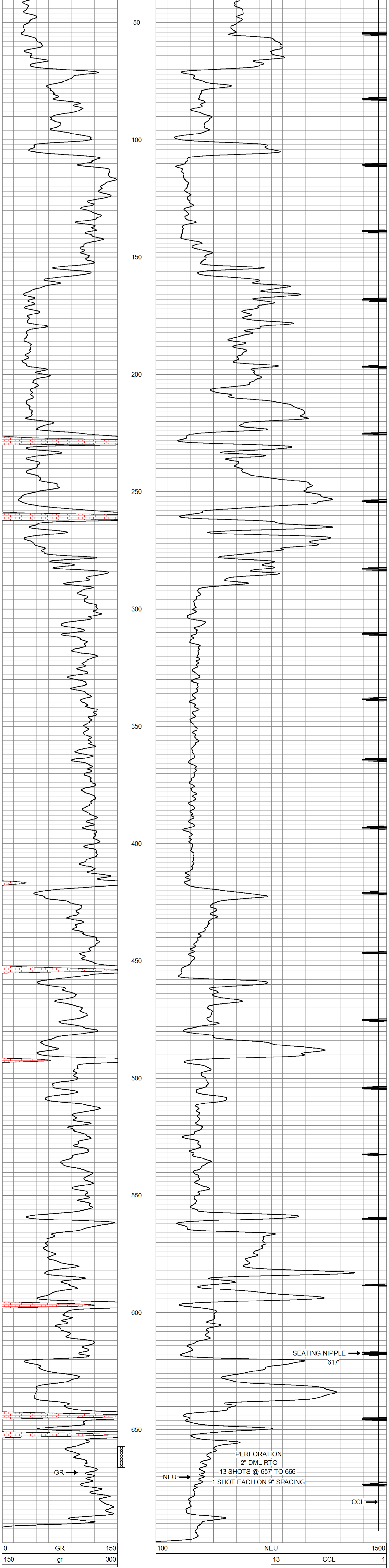
THANK YOU

Sensor	Offset (ft)	Schematic	Description	Len (ft)	OD (in)	Wt (lb)
GR	7.59		GR-TITAN_169 (TIT169_001) Titan 1 11/16" Gamma Ray	4.75	1.69	20.00
CCL	5.05		CCL-TITAN_169 (TIT169) Titan 1 11/16" Logging CCL	1.83	1.69	7.50
NEU	0.63		NEU-TITAN_169 (TIT169_001) Titan 1 11/16" Neutron	4.33	1.69	20.00

Dataset: hendricks #2.db: field/well/run1/pass1
 Total Length: 10.92 ft
 Total Weight: 47.50 lb
 O.D.: 1.69 in

Database File: e:\hendricks #2.db
 Dataset Pathname: pass1
 Presentation Format: gr-n-ccl
 Dataset Creation: Fri Mar 22 11:32:11 2013 by Log Std Casedhole 07122
 Charted by: Depth in Feet scaled 1:240

0	GR	150	100	NEU	1500
150	gr	300	13	CCL	-1



0	GR	150	100	NEU	1500
150	gr	300	13	CCL	-1