



MIDWEST SURVEYS
 LOGGING - PERFORATING - CONSULTING SERVICES
 P.O. Box 68, Osawatomie, KS 66064
 913 / 755 - 2128

GAMMA RAY / NEUTRON / CCL

File No. _____

Company **RJ Enterprises**

Well **Norman Unit No. 9-1**

Field **Davis - Bronson**

County **Allen** State **Kansas**

Location **1355' FSL & 1392' FEL**
SE-SE-NW-SE

Other Services **Perforate**

Sec. 3 Type 248 Rge. 21e Elevation NA

Permanent Datum GL Log Measured From GL Drilling Measured From GL

Elevation K.B. NA D.F. NA G.L. NA

Date 05-13-2013

Run Number One

Depth Diller 702.0

Bottom Logger 694.5

Bottom Logged Interval 693.5

Top Log Interval 20.0

Fluid Level Full

Type Fluid Water

Density / Viscosity NA

Salinity - PPM Cl NA

Max. Recorded Temp NA

Estimated Cement Top 0.0

Equipment No. 107 Location Osawatomie

Recorded By Steve Windisch

Witnessed By Jason Kent

BORE-HOLE RECORD				CASING RECORD			
RUN	BIT	FROM	TO	SIZE	WGHT	FROM	TO
One	9.875"	0.0	20.0	7.00"	17.0 #	0.0	20.0
Two	5.625"	20.0	722.0	2.875"	6.5 #	0.0	696.0

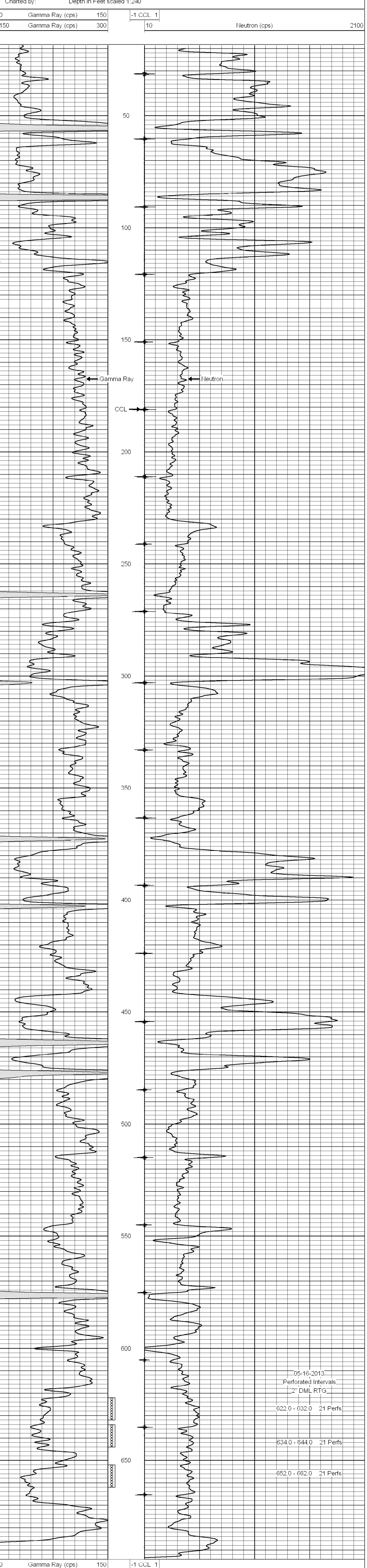
<<< Fold Here >>>

All interpretations are opinions based on inferences from electrical or other measurements and we cannot and do not guarantee the accuracy or correctness of any interpretation, and we shall not, except in the case of gross or willful negligence on our part, be liable or responsible for any loss, costs, damages, or expenses incurred or sustained by anyone resulting from any interpretation made by any of our officers, agents or employees. These interpretations are also subject to our general terms and conditions set out in our current Price Schedule.

Comments

Drilling Contractor :
RJ Enterprises

Database File: norman9i.db
 Dataset Pathname: pass1
 Presentation Format: gr-n-ccl
 Dataset Creation: Mon May 13 12:26:43 2013 by Log SCH 111116
 Charted by: Depth in Feet scaled 1:240



05-16-2013
 Perforated Intervals
 2" DML RTG
 622.0 - 632.0 21 Perfs
 634.0 - 644.0 21 Perfs
 652.0 - 662.0 21 Perfs