

Pioneer Energy Services

Sonic Cement
Bond Log

15-069-20414-00-00

Company **McCoy Petroleum Corporation**
Well **Richardson Trust "A" No.1-15**
Field **Wildcat**
County **Gray** State **Kansas**

Location

2310' FNL & 2010' FWL

Sec: 15 Twp: 27S Rge: 29W

Permanent Datum Ground Level Elevation 2741
Log Measured From Kelly Bushing 13 Ft. Above Perm. Datum
Drilling Measured From Kelly Bushing

Other Services
Perforate
Elevation
K.B. 2754
D.F. 2752
G.L. 2741

Run Number	One	
Date Survey	12/5/2012	
Date Cementing	11/27/2012	
Type Cementing Operation	Primary	
Depth Driller	5150	
Depth Logger	5108	
Logged Interval	5106 to 2900	to
Casing Driller	4.5 @ TD	@
Float Collar -- D.V. Tool	////	////
Squeeze Depth	////	
Amount & Type Cement	////	
Amount & Type Admix	////	
Type Fluid In Hole	Water	
Fluid Level	Full	
Salinity PPM CL	////	
Weight lb/gal -- Vis.	////	////
Approx. Logged Cement Top	3194	
Calculated Cement Top	////	
Max. Hole Temperature	126	
Tool No.	RBT1-1	
Spacing Recorded	3-5	
Equipment -- Location	13 Pratt	
Recorded By	S. Chesney	
Witnessed By	Dave Oller	

<<< Fold Here >>>

All interpretations are opinions based on inferences from electrical or other measurements and we cannot and do not guarantee the accuracy or correctness of any interpretation, and we shall not, except in the case of gross or willful negligence on our part, be liable or responsible for any loss, costs, damages, or expenses incurred or sustained by anyone resulting from any interpretation made by any of our officers, agents or employees. These interpretations are also subject to our general terms and conditions set out in our current Price Schedule.

Comments

Thank you for using Pioneer Energy Services
(620) 672-8300

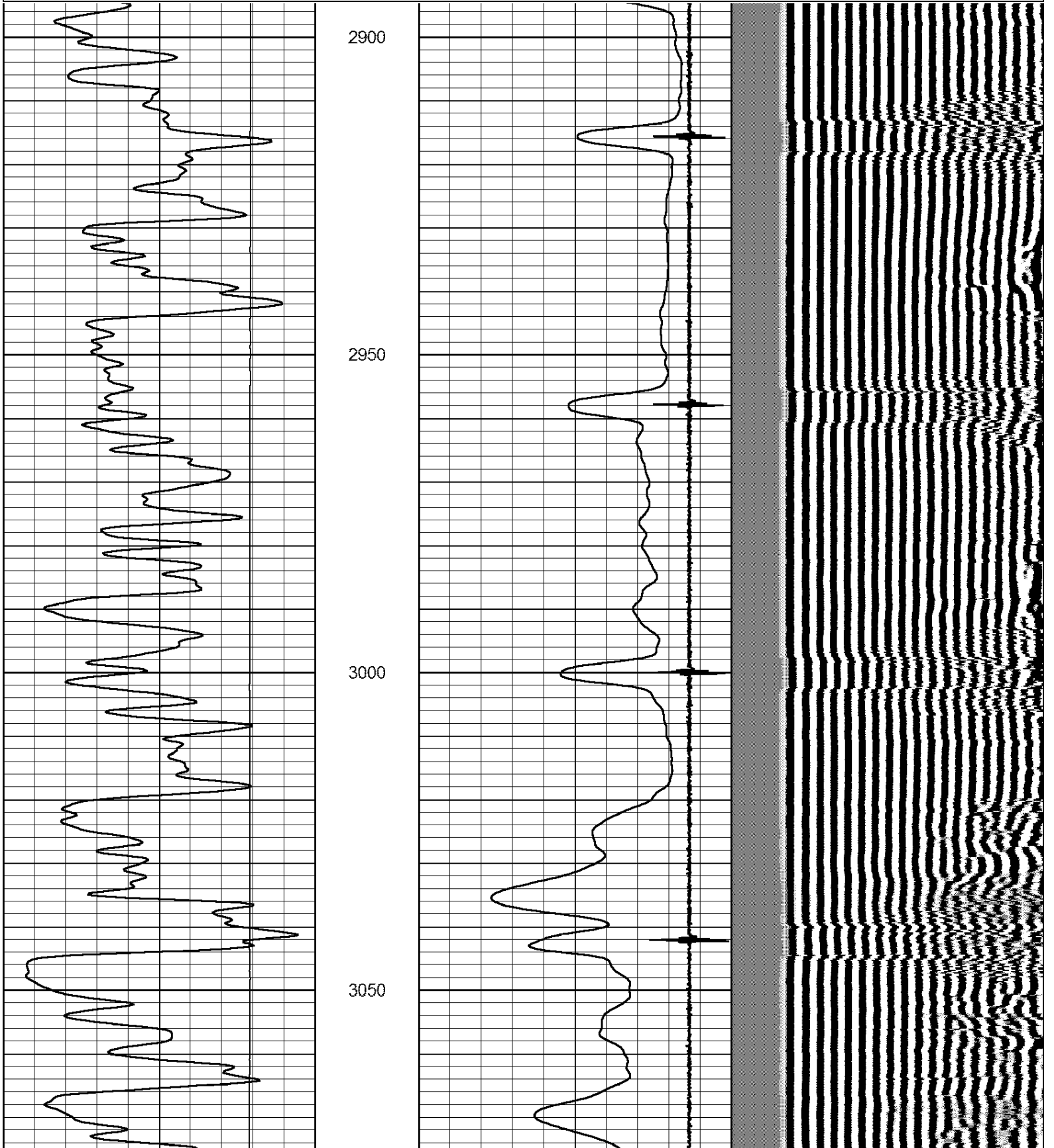
Montezuma, W Side, 6.5N to "V" Rd, 2W to 10th, 1/2N,
E into

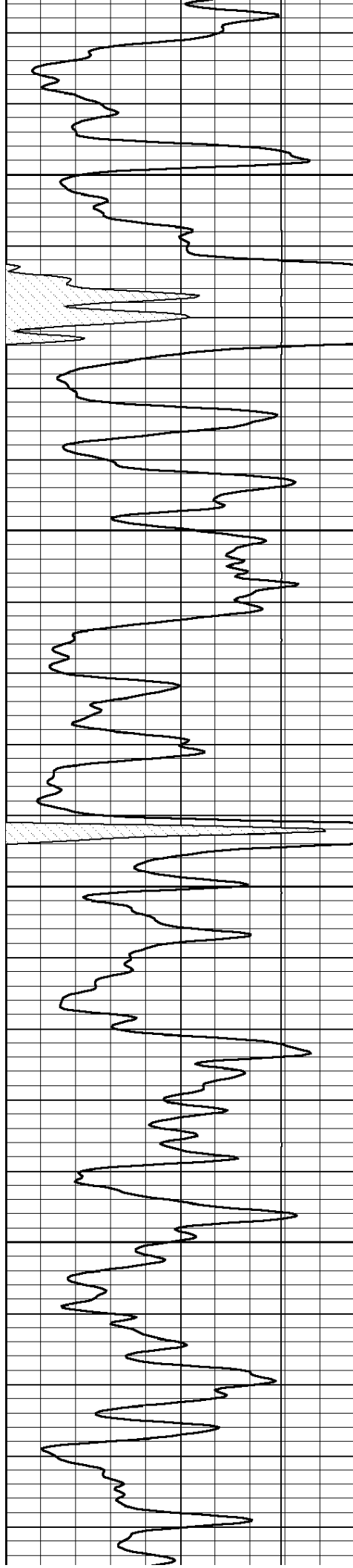


Main Pass

Database File: mccoys-richardson-a1.db
Dataset Pathname: grcbl/pass4
Presentation Format: cblcr
Dataset Creation: Wed Dec 05 13:16:57 2012 by Calc SCH 120126
Charted by: Depth in Feet scaled 1:240

0	Gamma Ray	150	amp3ft	11	Casing Collars	-1.7	200	wvf5ft	1200
			(mV)	0	Amplified Amplitude (mV)	100			
			-100 10	0	Pipe Amplitude (mV)	20			



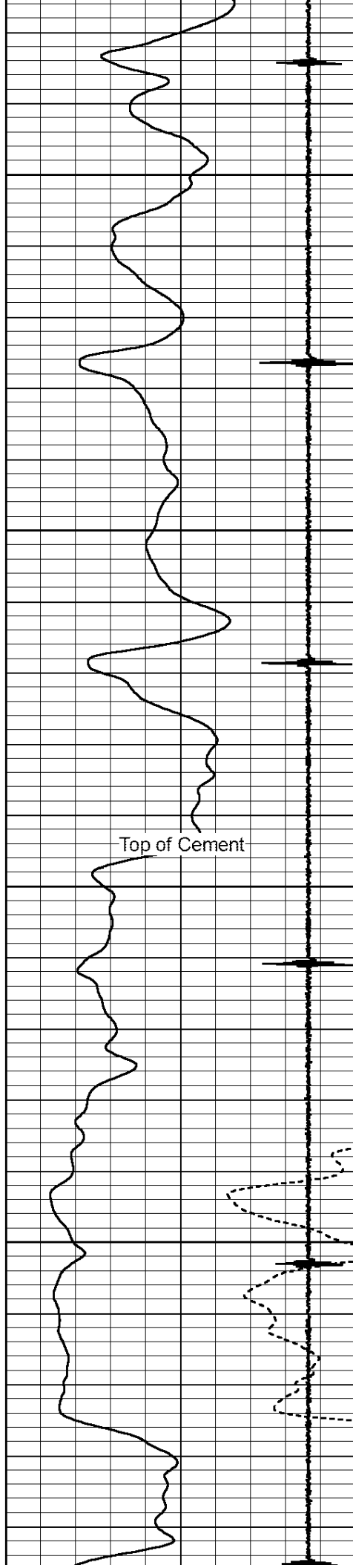


3100

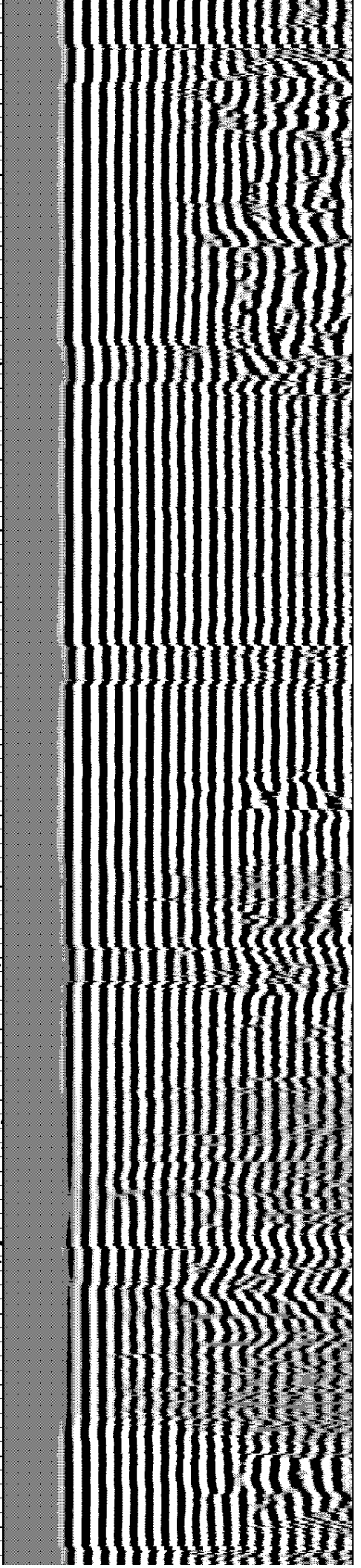
3150

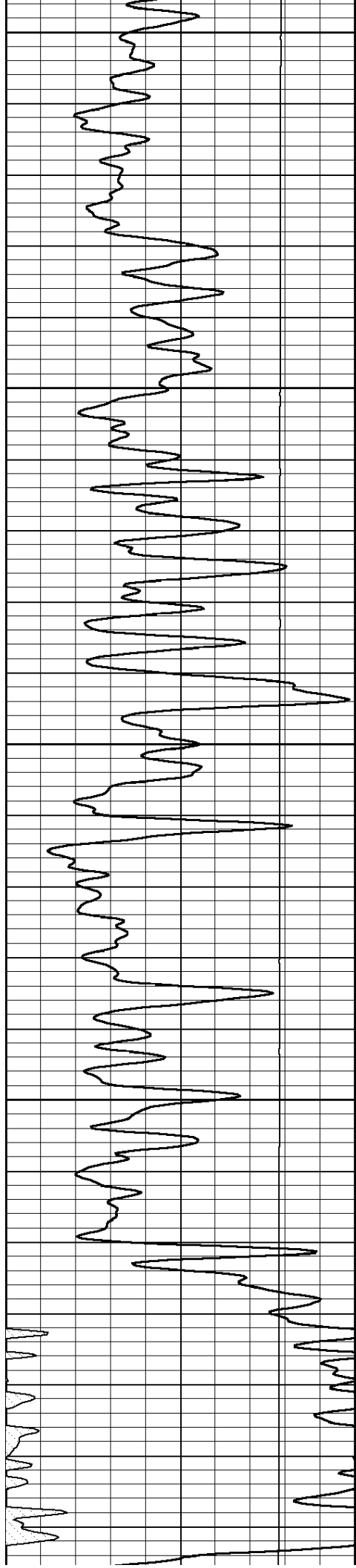
3200

3250



Top of Cement





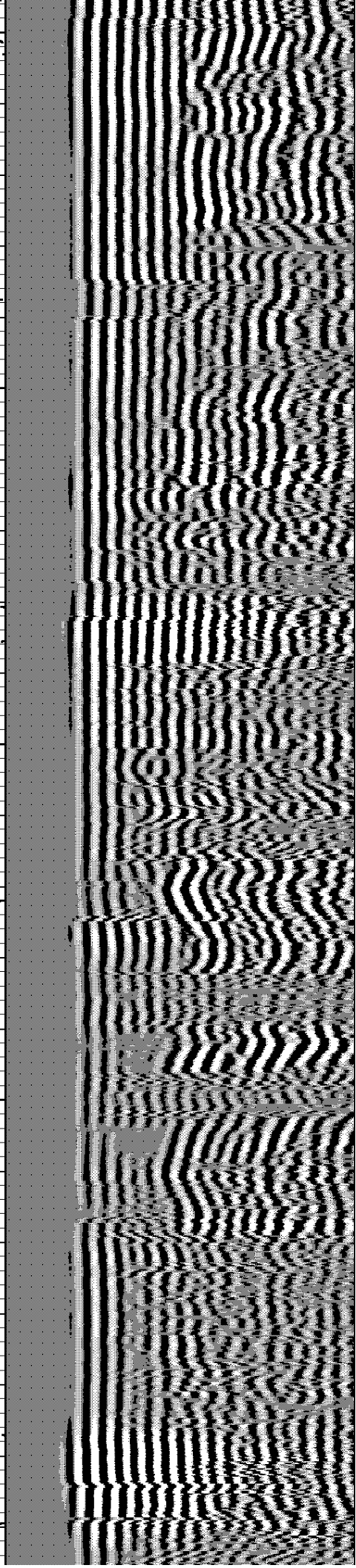
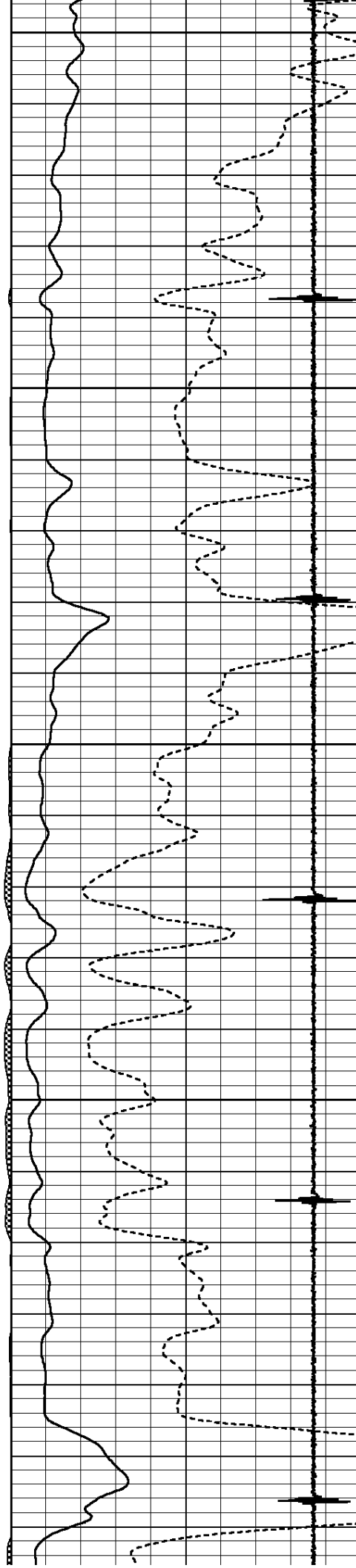
3300

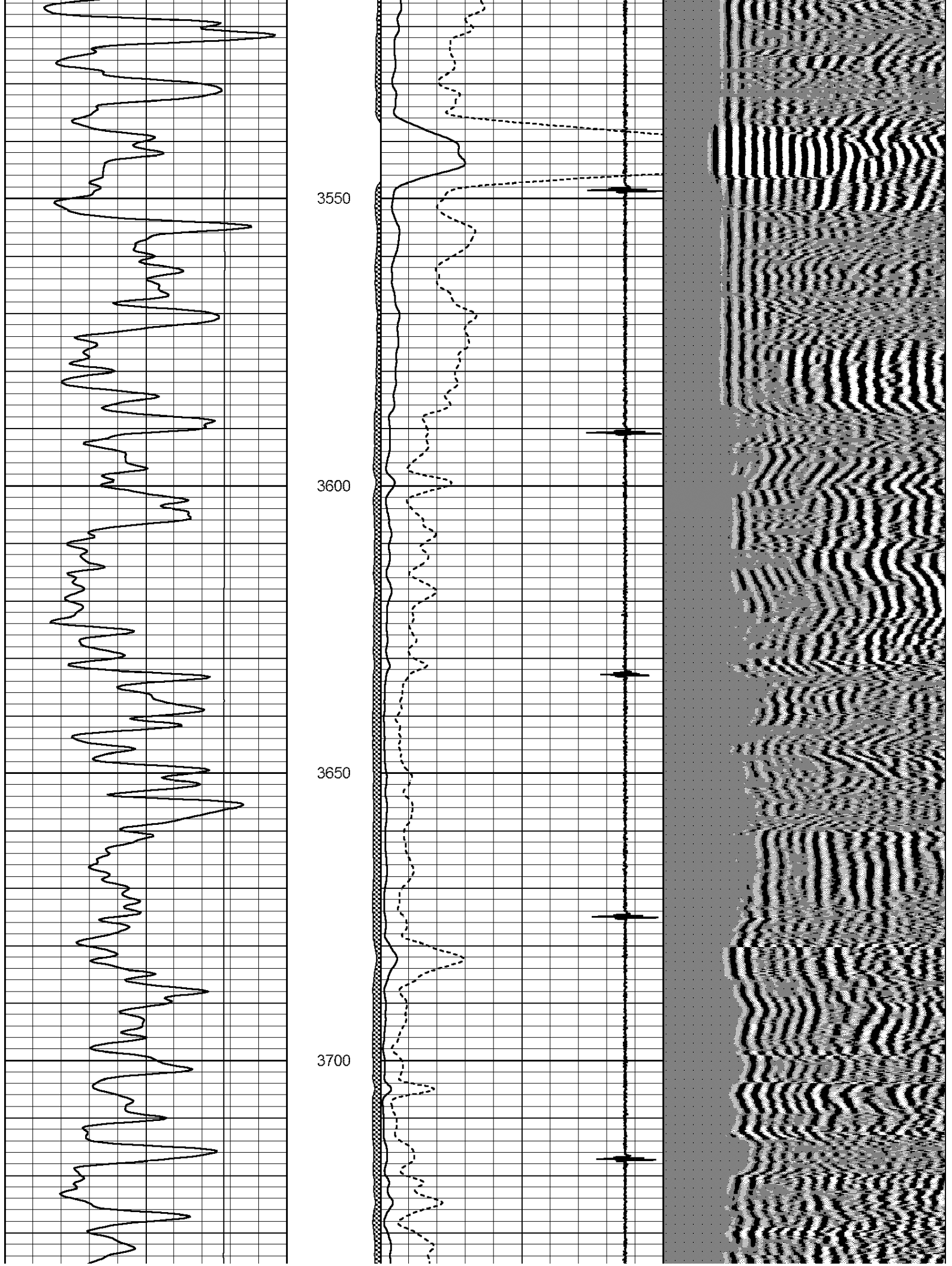
3350

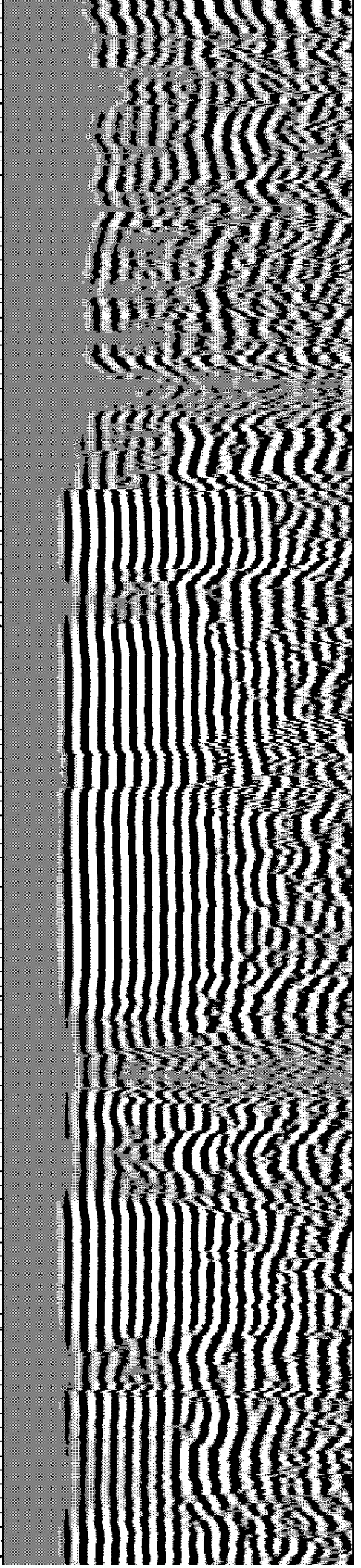
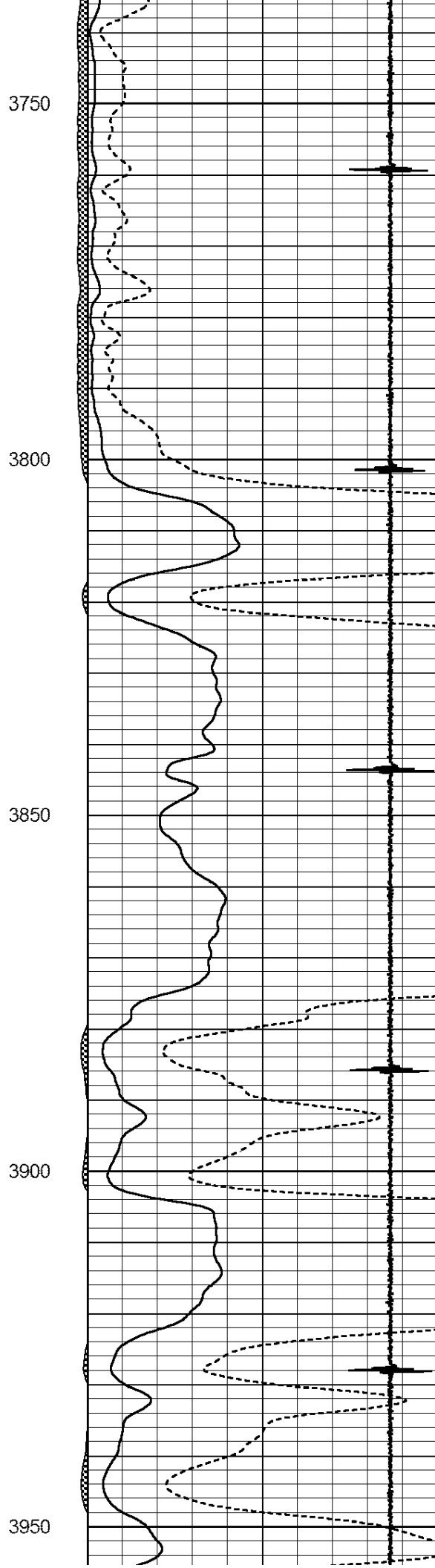
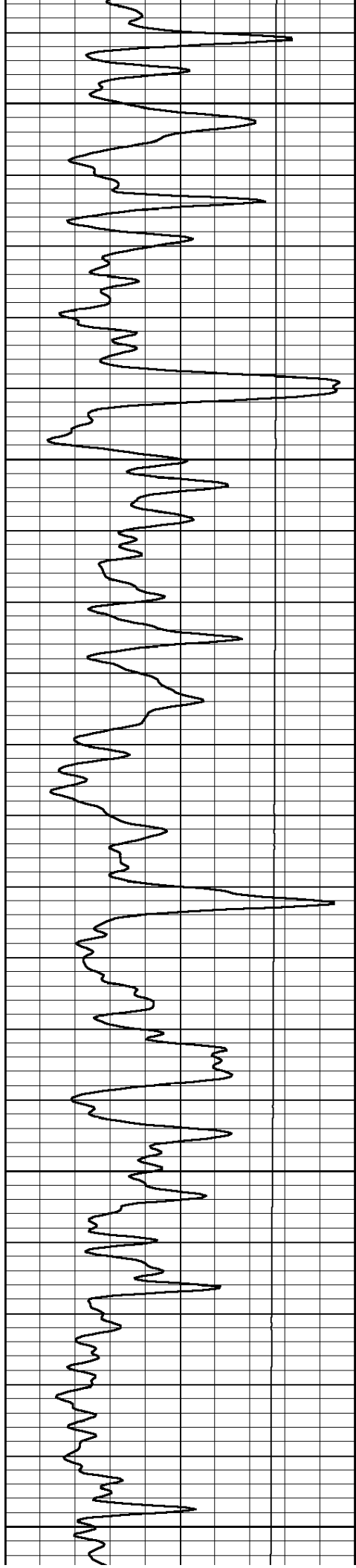
3400

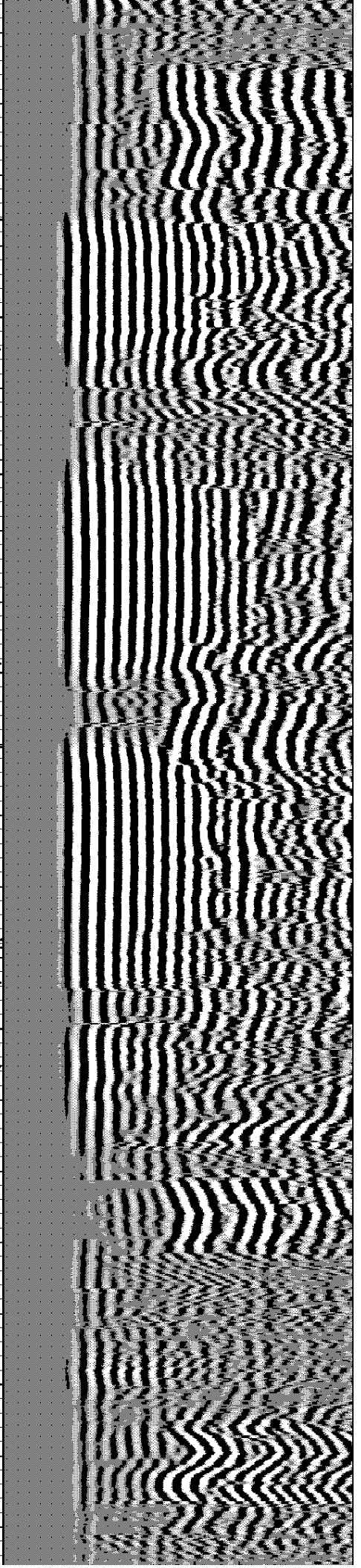
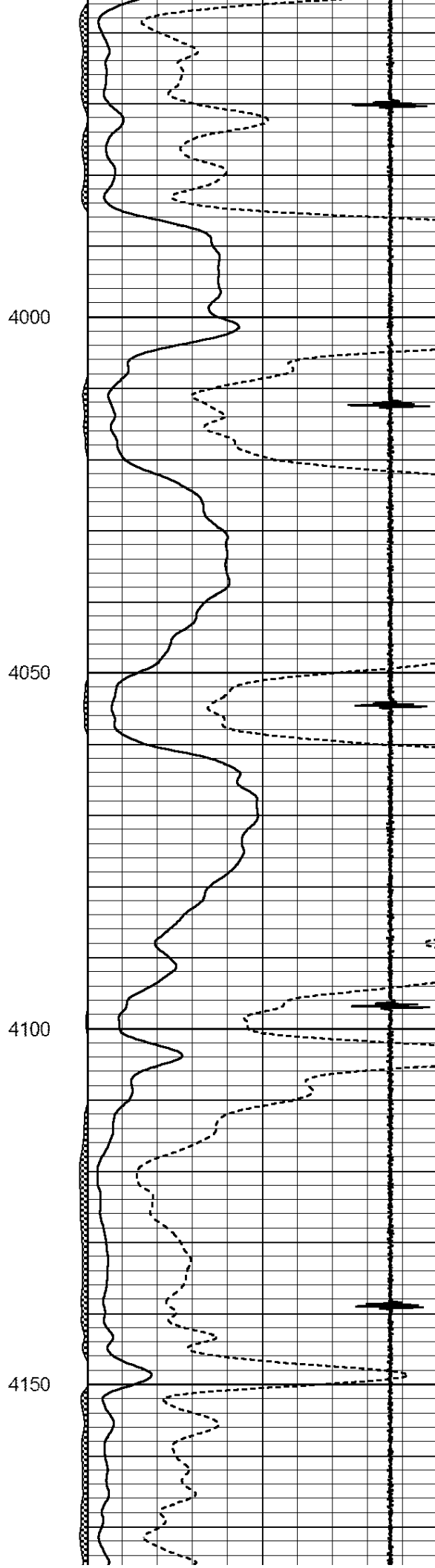
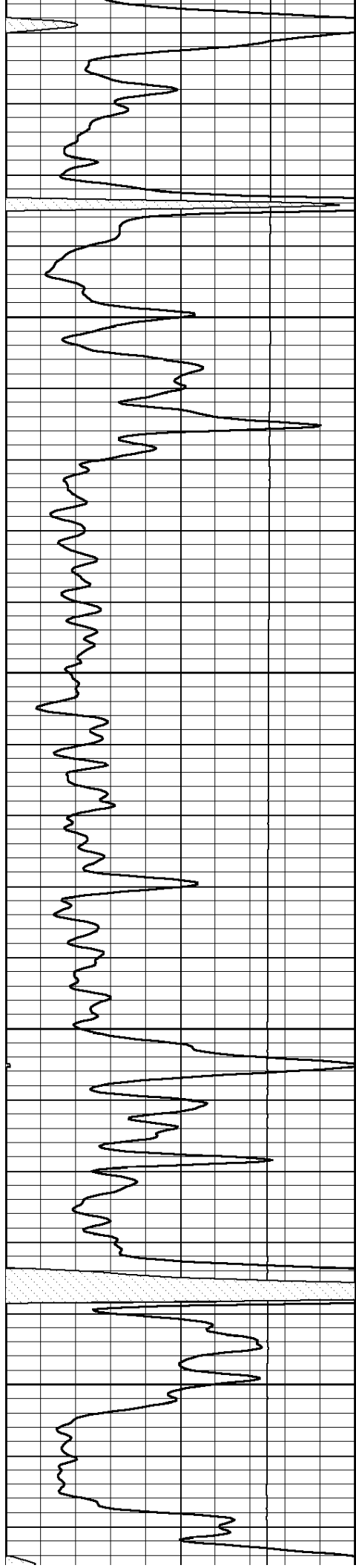
3450

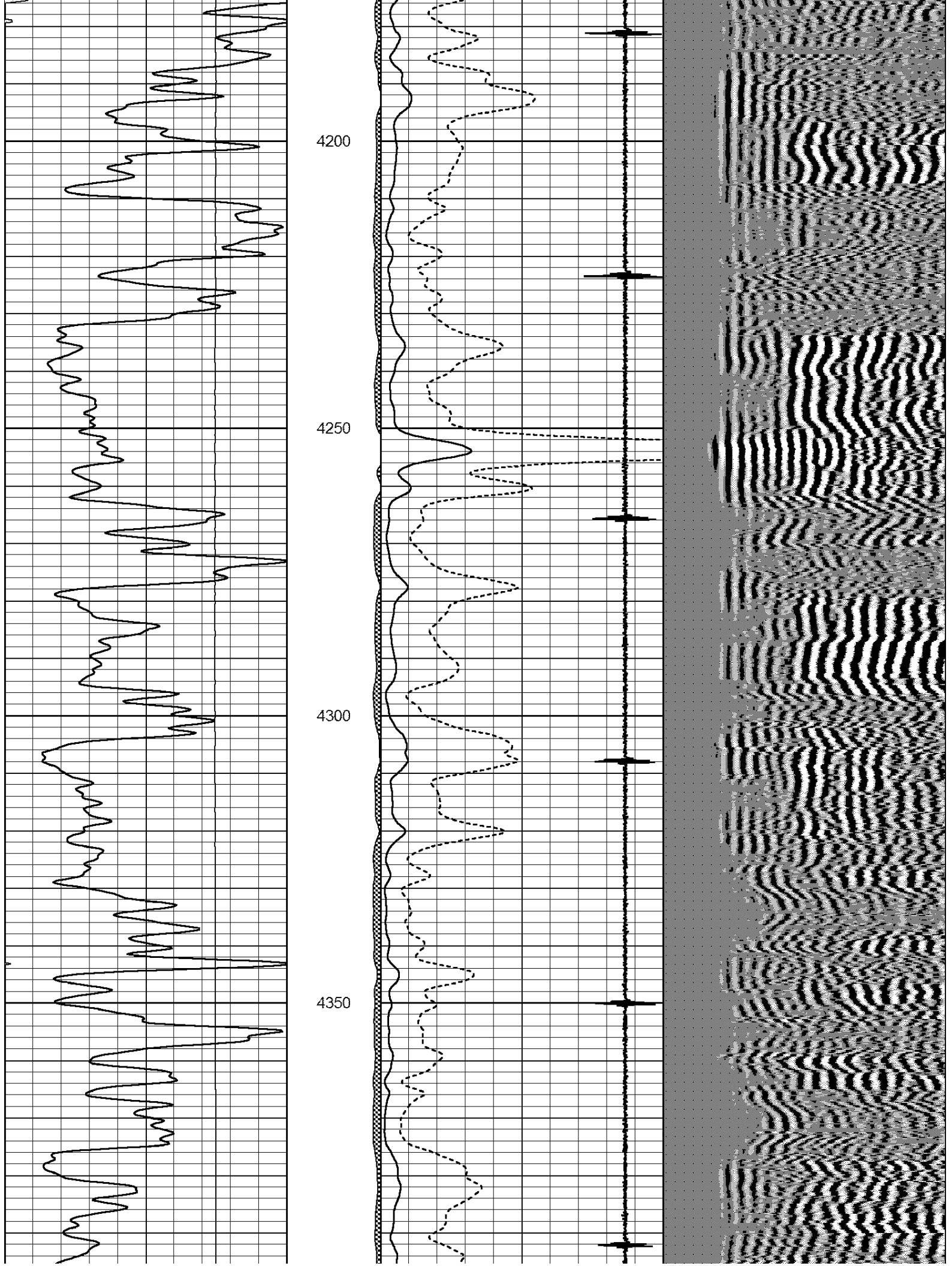
3500

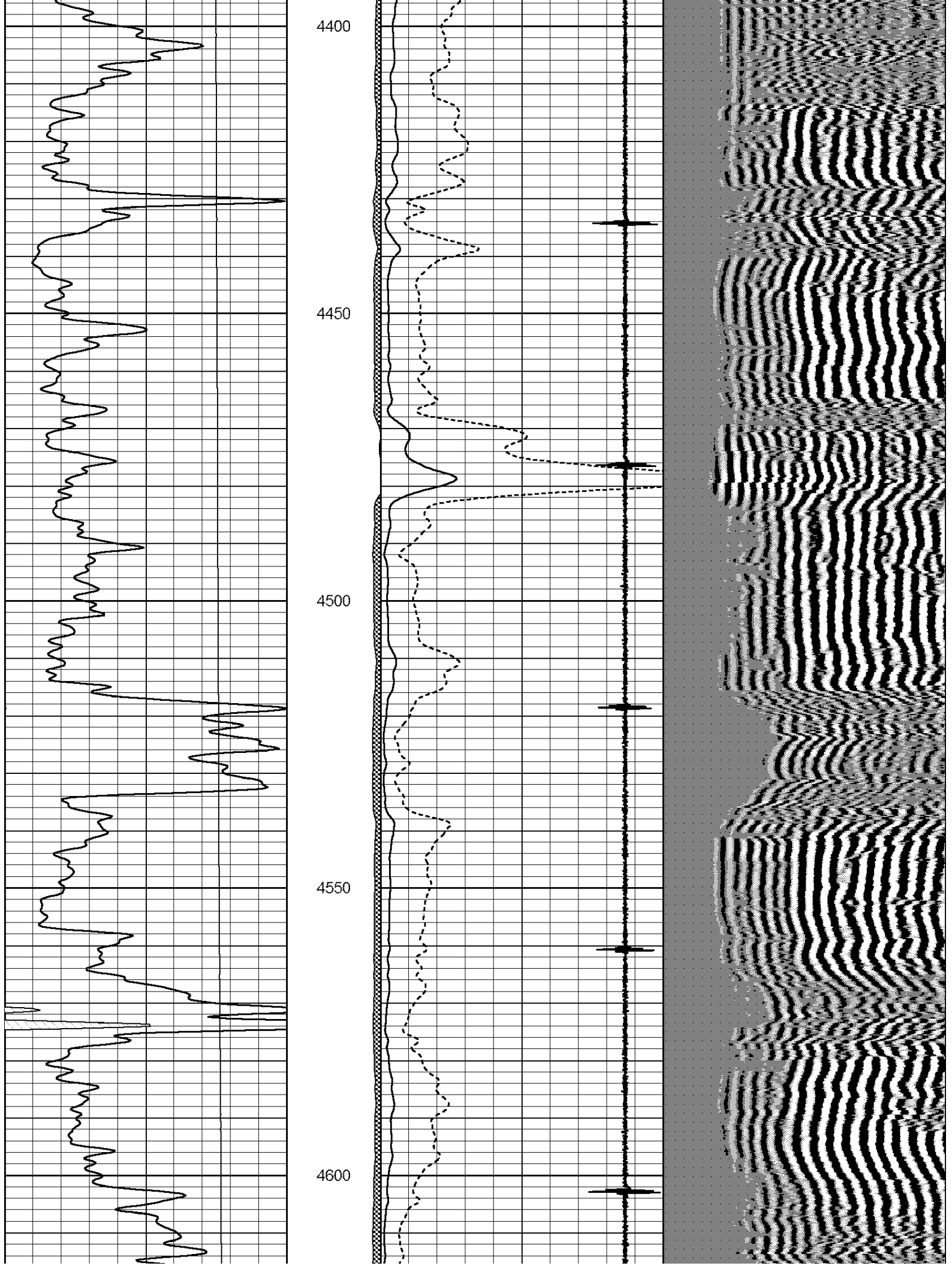


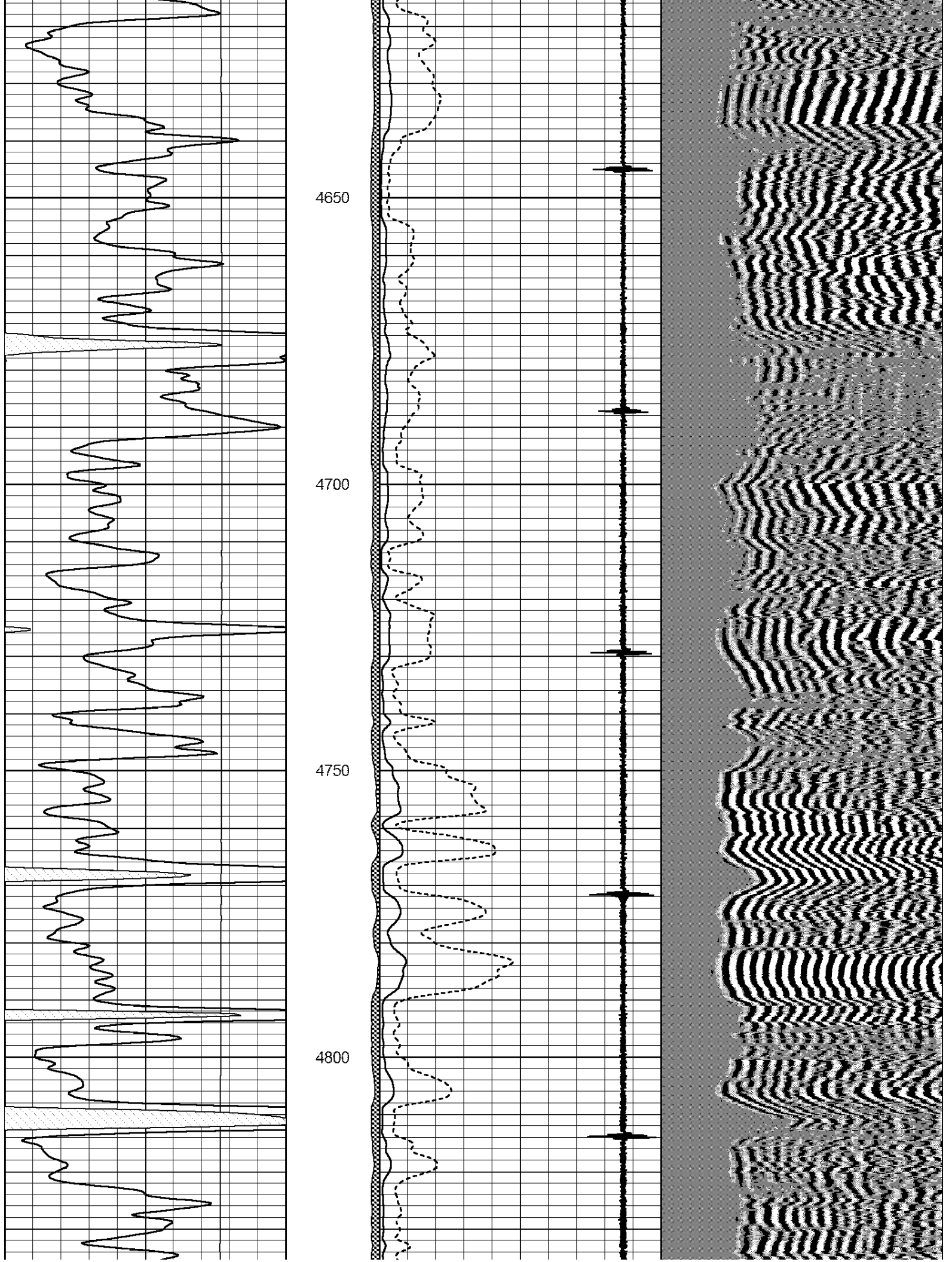


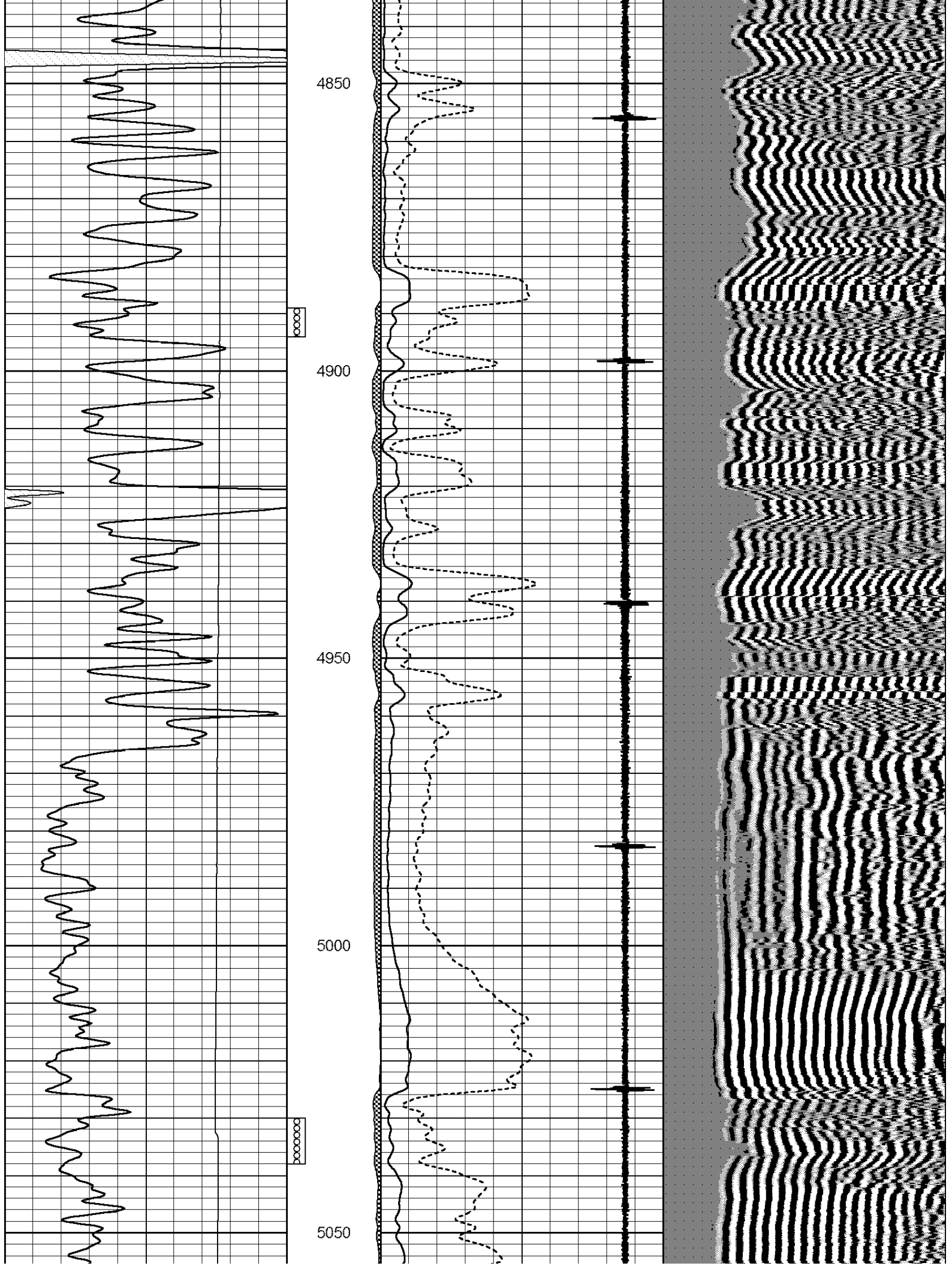


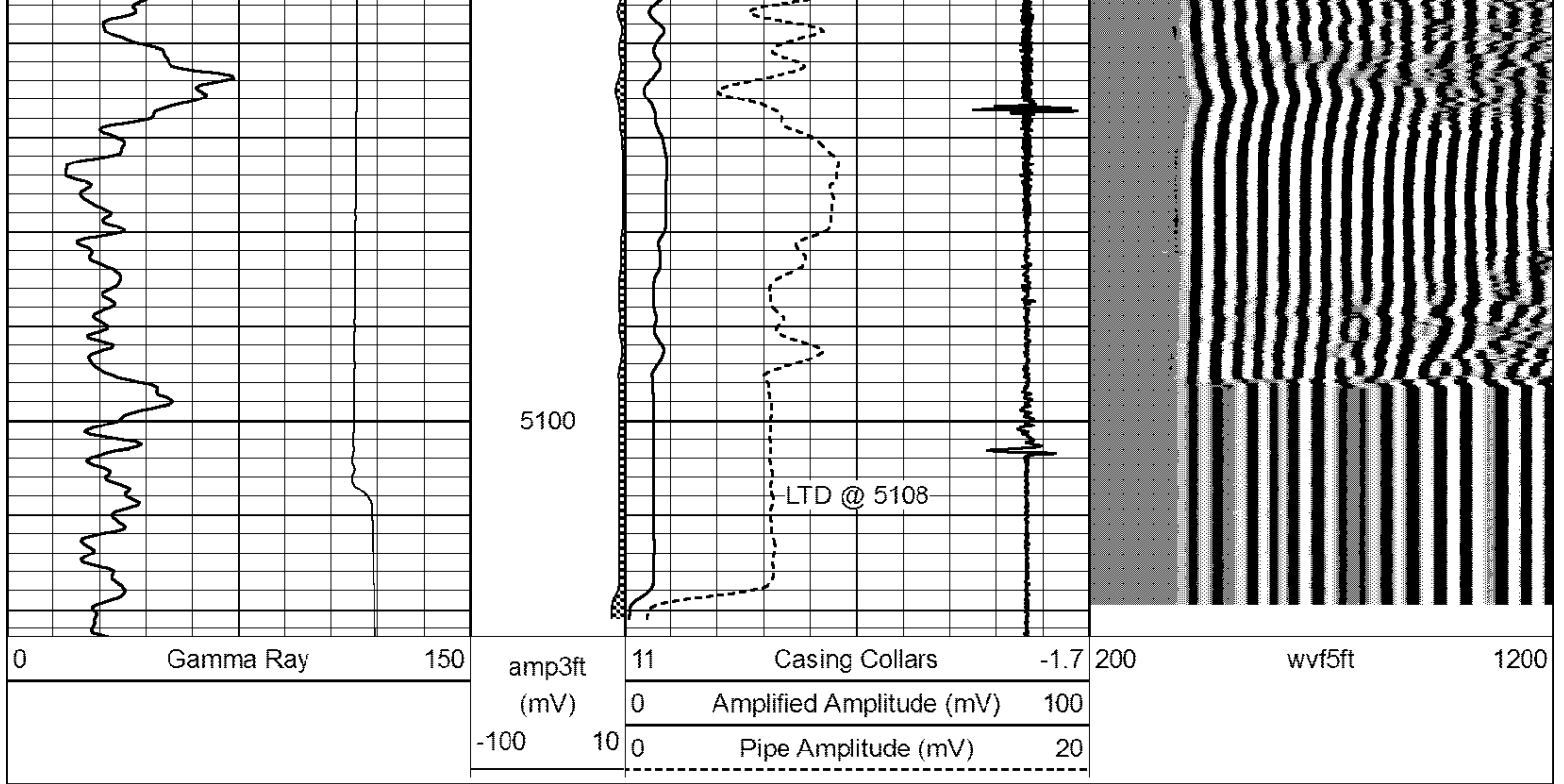












Repeat Section

Database File: mccoys-richardson-a1.db
 Dataset Pathname: grcbl/pass3
 Presentation Format: cblcr
 Dataset Creation: Wed Dec 05 12:36:17 2012 by Log SCH 120126
 Charted by: Depth in Feet scaled 1:240

