



**COMPLETION
& PRODUCTION
SERVICES CO.**

**MICRO
LOG**

Company PHILLIPS EXPLORATION COMPANY, L.C.
Well #1 ROSEMARY SHR
Field
County TREGO
State KANSAS

Company PHILLIPS EXPLORATION COMPANY, L.C.
Well #1 ROSEMARY SHR
Field
County TREGO State KANSAS

Location: 660' FNL & 1650' FEL
API #: 15-195-22965-0000
SEC 20 TWP 14S RGE 25W
Permanent Datum GROUND LEVEL Elevation 2386'
Log Measured From KELLY BUSHING 5' A.G.L.
Drilling Measured From KELLY BUSHING
Other Services CDL/CNL DIL
Elevation K.B. 2391 D.F. 2389 G.L. 2386

Date	10/22/14		
Run Number	TWO		
Depth Driller	4470		
Depth Logger	4471		
Bottom Logged Interval	4469		
Top Log Interval	3300		
Casing Driller	8 5/8" @ 220		
Casing Logger	220		
Bit Size	7 7/8"		
Type Fluid in Hole	CHEMICAL MUD	CHLORIDES 1500 PPM	
Density / Viscosity	9.4/55		
pH / Fluid Loss	10.5/7.4		
Source of Sample	FLOWLINE		
Rm @ Meas. Temp	1.0 @ 75F		
Rmt @ Meas. Temp	.75 @ 75F		
Rmc @ Meas. Temp	1.20 @ 75F		
Source of Rmf / Rmc	MEASUREMENT		
Rm @ BHT	.62 @ 120F		
Time Circulation Stopped	2 HOURS		
Time Logger on Bottom	7:25 A.M.		
Maximum Recorded Temperature	120F		
Equipment Number	4010		
Location	HAYS, KANSAS		
Recorded By	JASON CAPPELLUCCI		
Witnessed By	PAT DEENIHAN		

<<< Fold Here >>>

All interpretations are opinions based on inferences from electrical or other measurements and we cannot and do not guarantee the accuracy or correctness of any interpretation, and we shall not, except in the case of gross or willful negligence on our part, be liable or responsible for any loss, costs, damages, or expenses incurred or sustained by anyone resulting from any interpretation made by any of our officers, agents or employees. These interpretations are also subject to our general terms and conditions set out in our current Price Schedule.

Comments

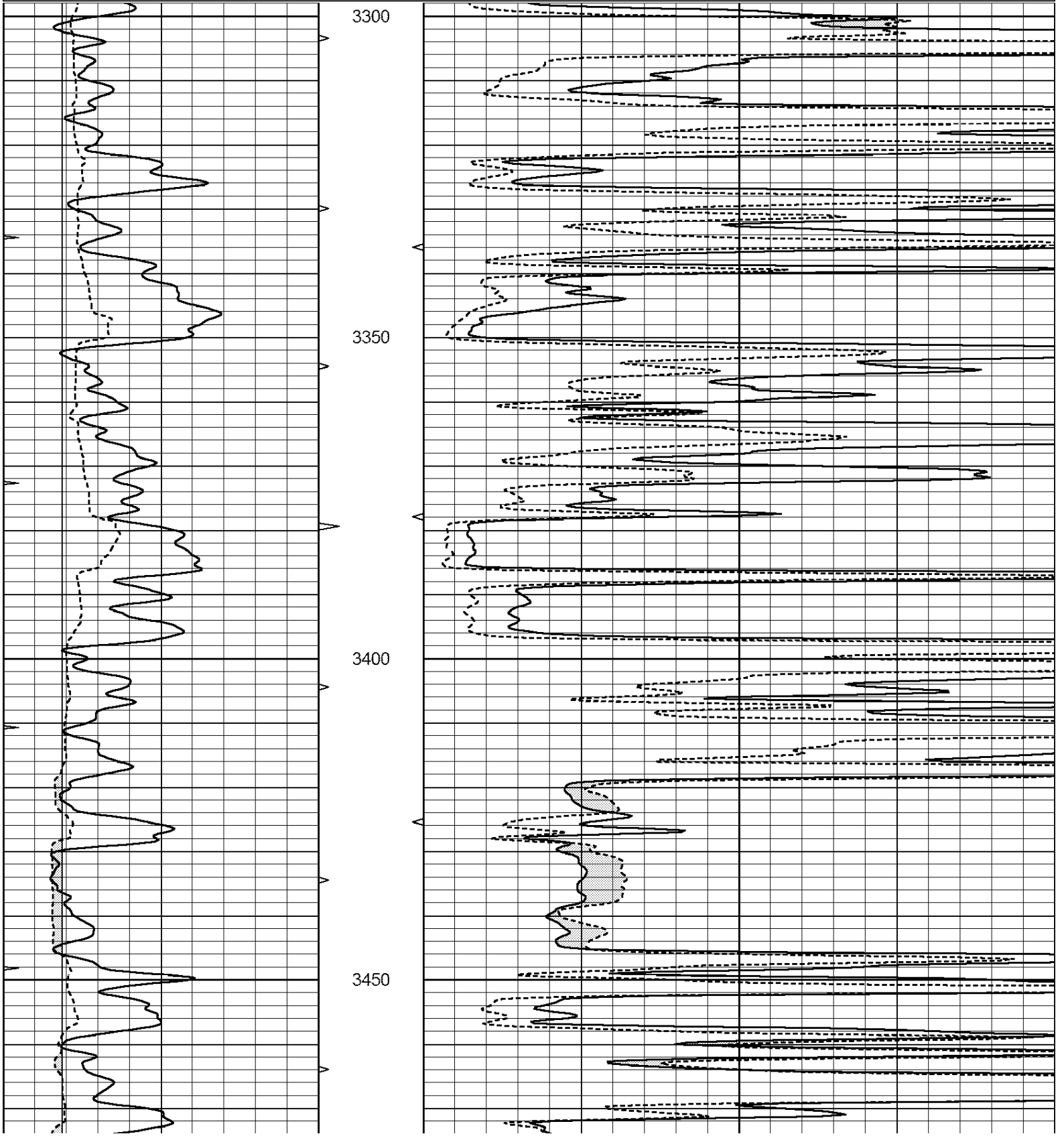
THANK YOU FOR USING NABORS, HAYS, KS. (785) 628-6395
DIRECTIONS:
I 70 & COLLYER EXIT - 13 SOUTH TO U RD. - 3/4 MORE SOUTH - WEST INTO

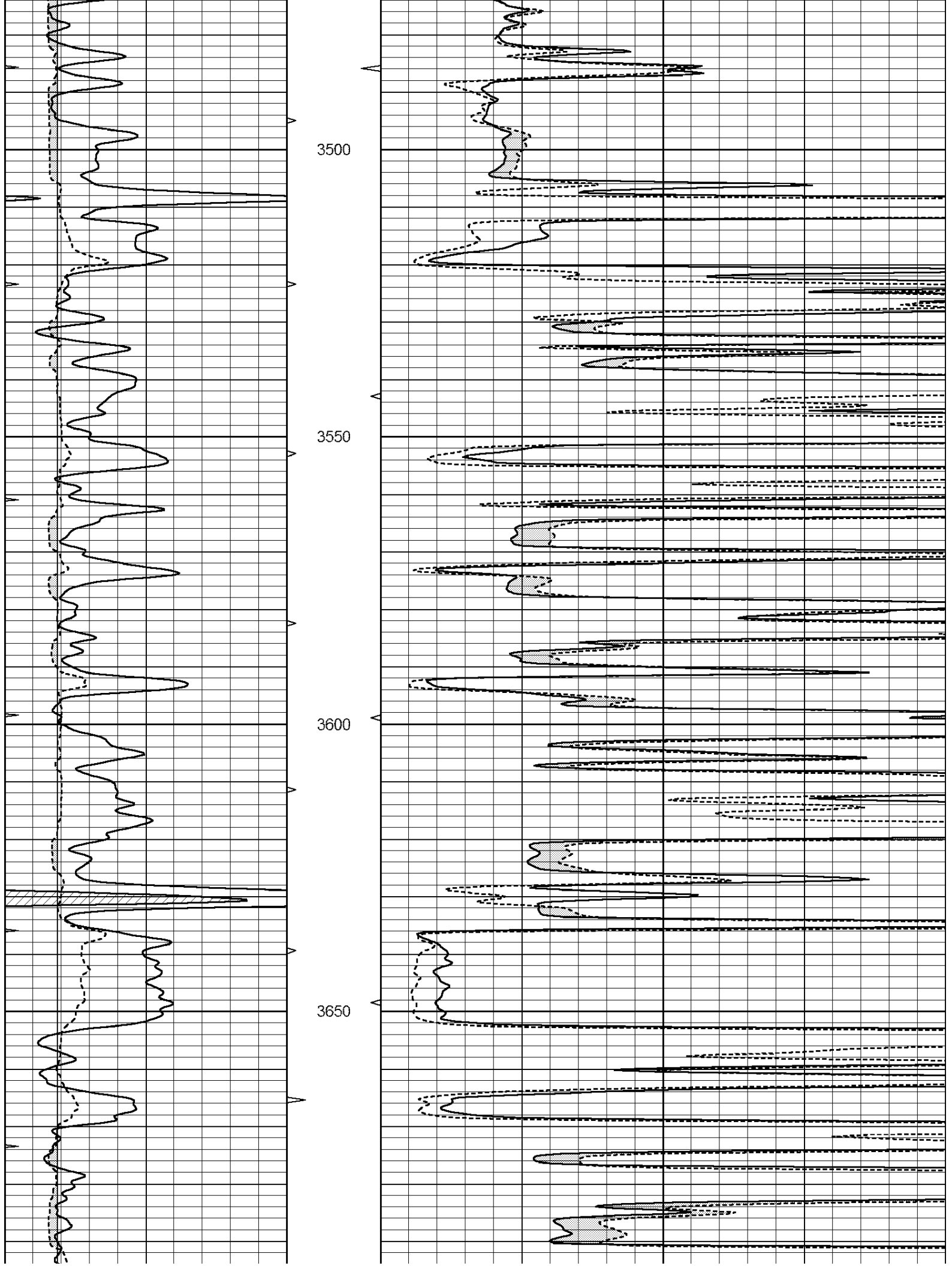


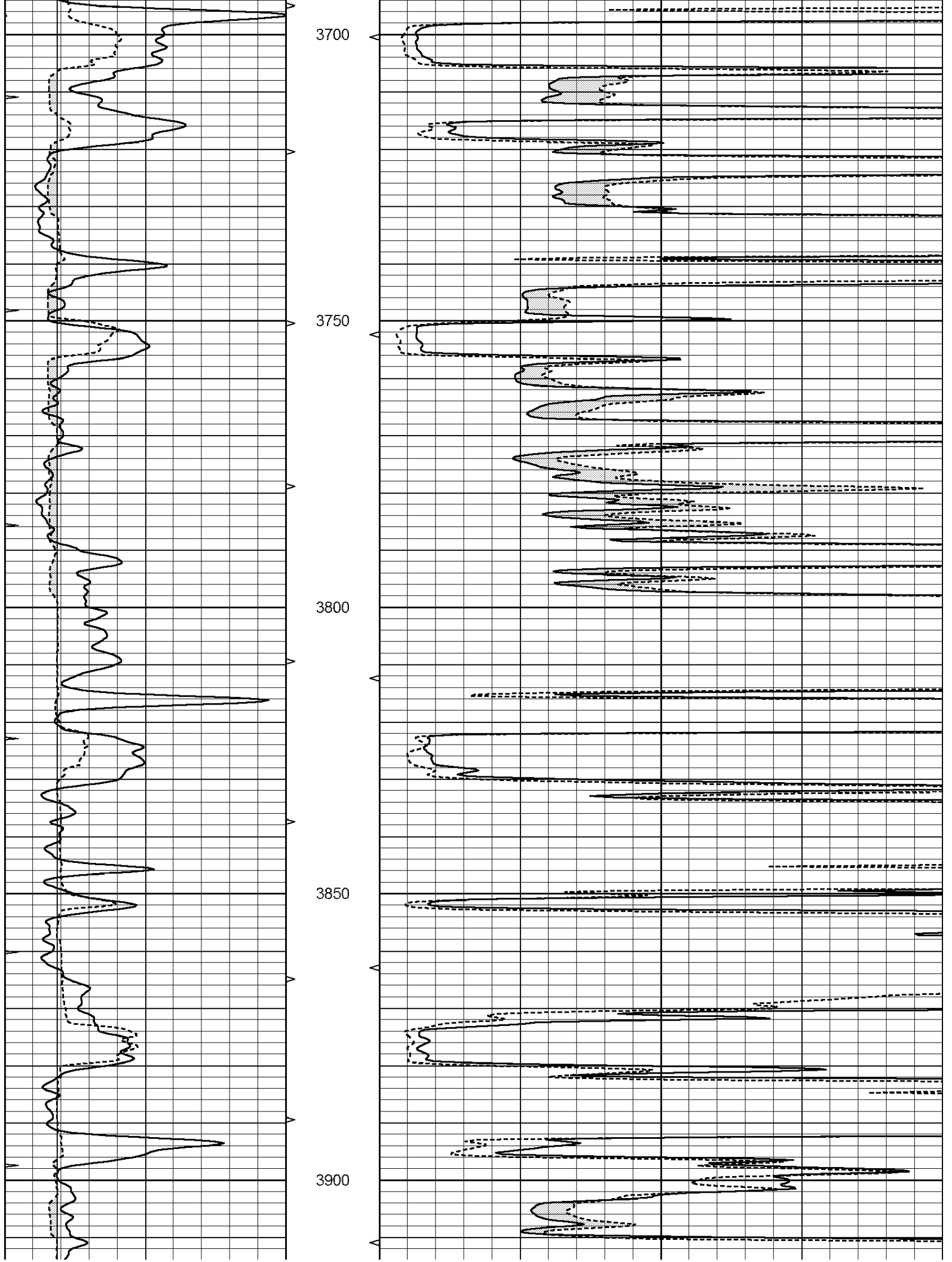
MAIN SECTION

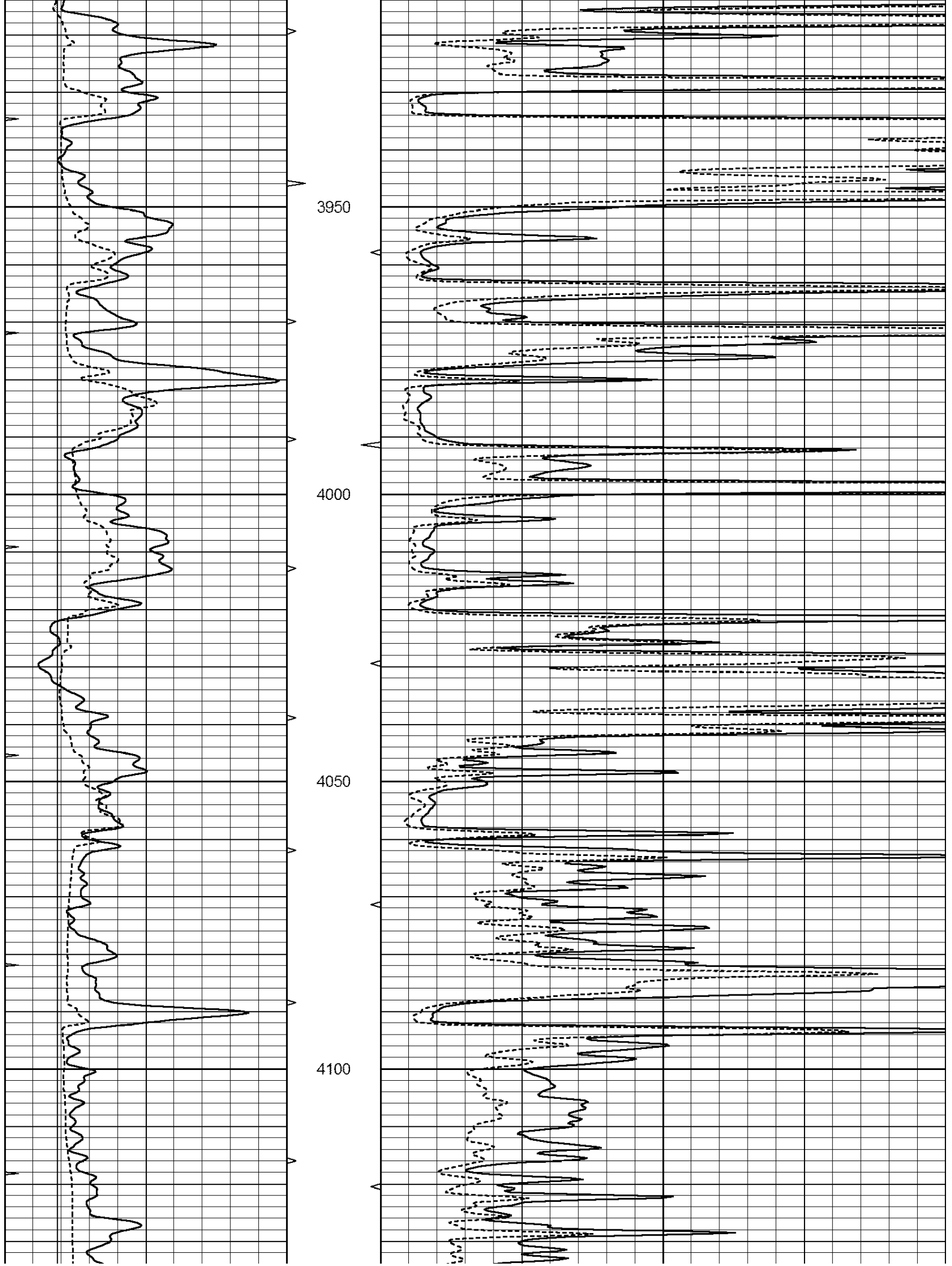
Database File: 26214ddn.db
 Dataset Pathname: pass6.2
 Presentation Format: _micro
 Dataset Creation: Wed Oct 22 10:39:26 2014 by Calc Open-Cased 090629
 Charted by: Depth in Feet scaled 1:240

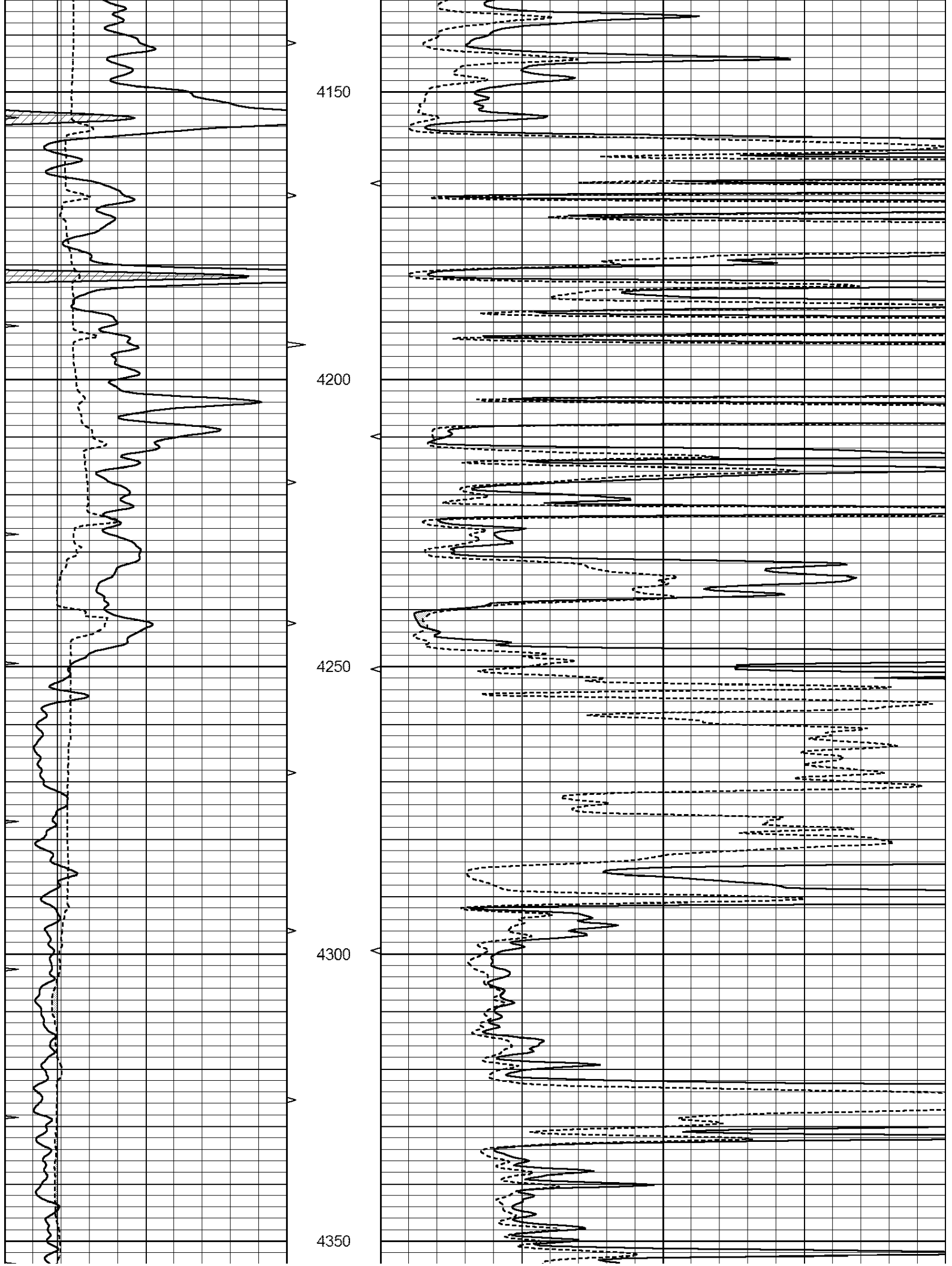
0	GAMMA RAY (GAPI)	150	ABHV	0	MEL1.5 (Ohm-m)	40
6	CALIPER (in)	16	10 (ft3)	0	MEL2.0 (Ohm-m)	40
0	MINMK	20	TBHV			
			0 (ft3)	10		

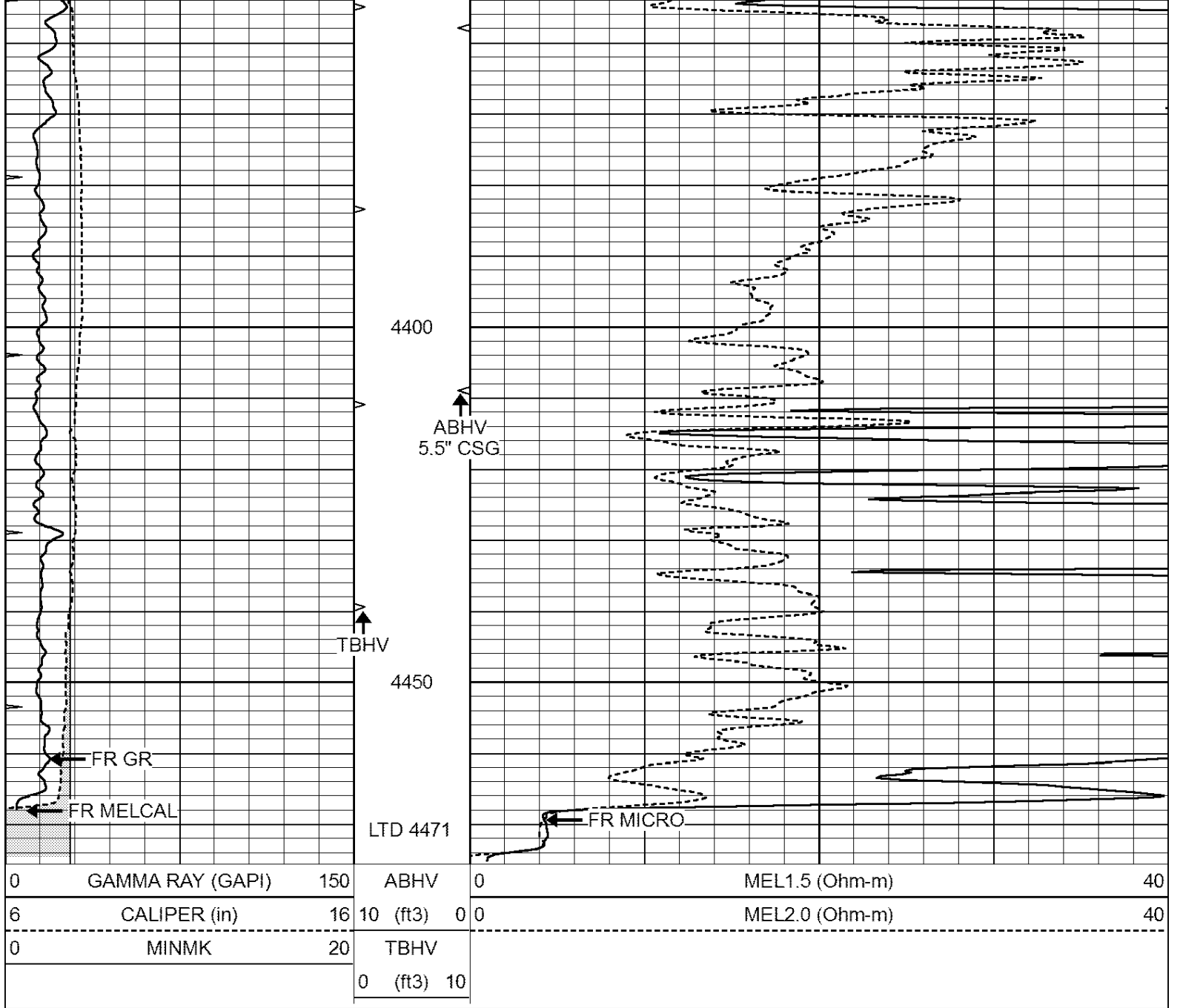








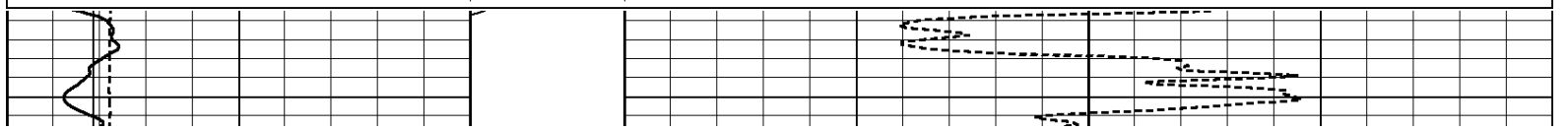


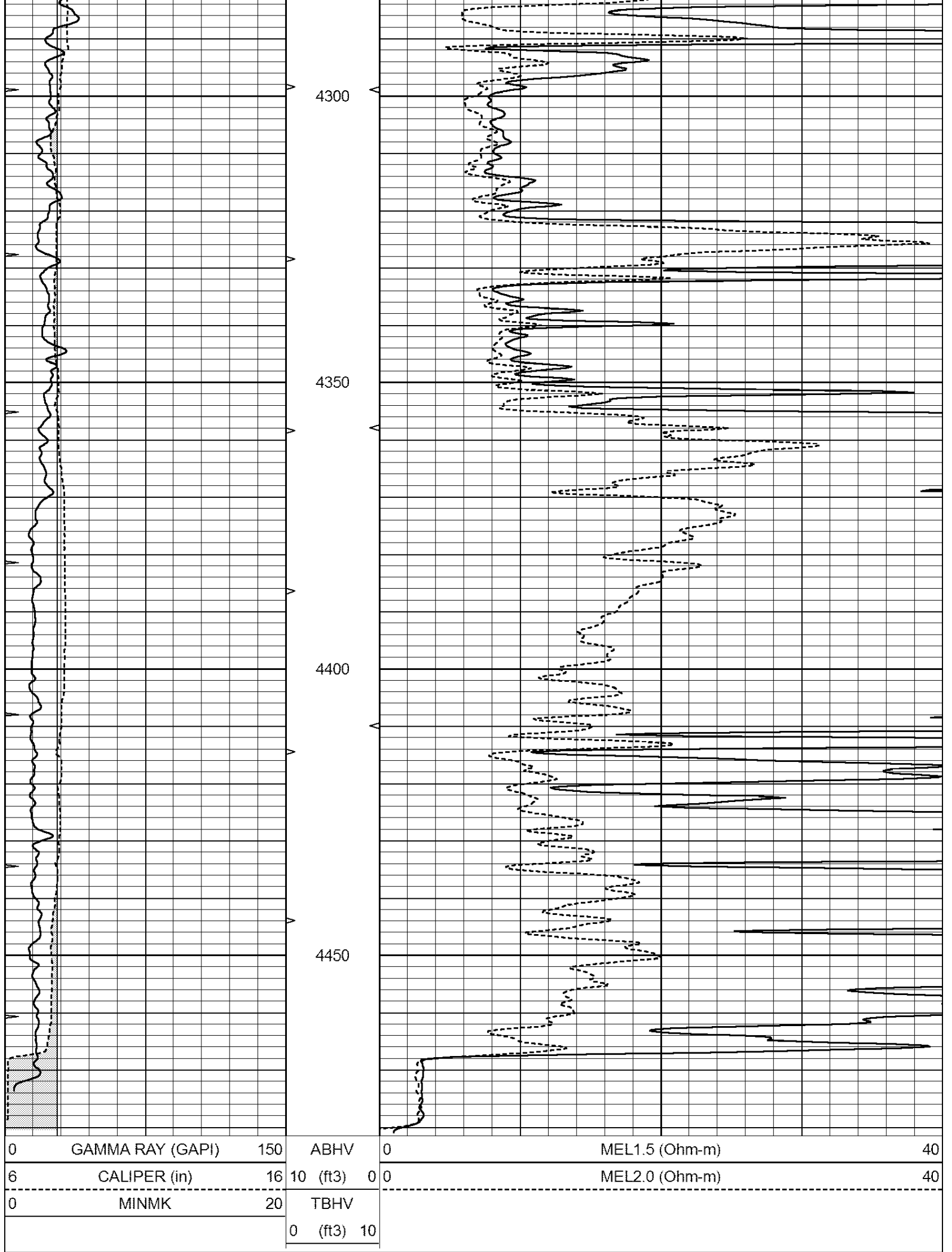


REPEAT SECTION

Database File: 26214ddn.db
 Dataset Pathname: pass5.2
 Presentation Format: _micro
 Dataset Creation: Wed Oct 22 10:35:09 2014 by Calc Open-Cased 090629
 Charted by: Depth in Feet scaled 1:240

0	GAMMA RAY (GAPI)	150	ABHV	0	MEL1.5 (Ohm-m)	40
6	CALIPER (in)	16	10 (ft3)	0 0	MEL2.0 (Ohm-m)	40
0	MINMK	20	TBHV			
			0 (ft3)	10		





Calibration Report

Database File: 26214ddn.db
 Dataset Pathname: pass5.2
 Dataset Creation: Wed Oct 22 10:35:09 2014 by Calc Open-Cased 090629

MICRO Calibration Report

Serial Number: MICRO3
 Tool Model: PROBE
 Performed: Thu Nov 17 03:06:31 2011

Caliper Calibration:	Gain=3.916	Offset=-9.071
	Low Cal	High Cal
References	8.000	14.000
Readings	4.257	5.789

1.5" Calibration:	Gain=130.000	Offset=1.000
	Low Cal	High Cal
References	0.000	20.000
Readings	0.004	0.228

2" Calibration:	Gain=180.553	Offset=-1.220
	Low Cal	High Cal
References	0.000	20.000
Readings	0.005	0.175

Gamma Ray Calibration Report

Serial Number: GR6
 Tool Model: OPEN
 Performed: Sun Aug 17 15:23:09 2014

Calibrator Value:	150.0	GAPI
Background Reading:	0.0	cps
Calibrator Reading:	276.0	cps
Sensitivity:	0.7000	GAPI/cps