



MIDWEST SURVEYS
 LOGGING - PERFORATING - CONSULTING SERVICES
 P.O. Box 68, Osawatomie, KS 66064
 913 / 755 - 2128

GAMMA RAY / NEUTRON / CCL

File No. Company TDR Construction, Inc.
 Well Hoehn No.- 23
 Field Paola - Rantoul

County Franklin State Kansas

Location 3135' FSL & 4060' FEL
 NE-SE-SW-NW

Other Services Perforate

Sec. 5 Permament Deam Log Measured From Drilling Measured From

Date 06-26-2014

Run Number One

Depth Drier 780.0

Depth Logger 723.8

Bottom Logged Interval 722.8

Top Log Interval 20.0

Fluid Level Full

Type Fluid Water

Density / Viscosity NA
 Salinity - PPM Cl NA
 Max. Recorded Temp NA
 Estimated Cement Top 0.0
 Equipment No. 107
 Location Osawatomie
 Recorded By Steve Wandsch
 Witnessed By Lance Town

BORE-HOLE RECORD				CASING RECORD			
Run No.	BIT	FROM	TO	SIZE	WGT.	FROM	TO
One	9.875"	0.0	21.0	7.00"	17.0#	0.0	21.0
Two	5.875"	21.0	790.0	2.875"	6.5 #	0.0	757.0
				Baffle	Set	At	725.0

<<< Fold Here >>>

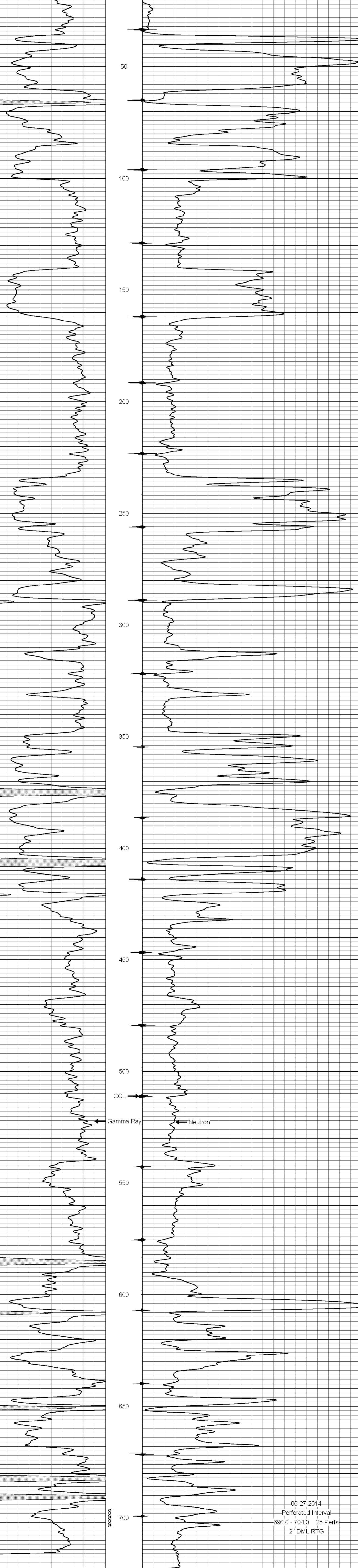
All interpretations are opinions based on inferences from electrical or other measurements and we cannot and do not guarantee the accuracy or correctness of any interpretation, and we shall not, except in the case of gross or willful negligence on our part, be liable or responsible for any loss, costs, damages, or expenses incurred or sustained by anyone resulting from any interpretation made by any of our officers, agents or employees. These interpretations are also subject to our general terms and conditions set out in our current Price Schedule.

Comments

Drilling Contractor :
 Town Oilfield Services, Inc.

Database File: hoehn 23.db
 Dataset Pathname: pass1
 Presentation Format: gr-n-ccl
 Dataset Creation: Fri Jun 27 11:52:58 2014 by Log SCH 111116
 Charted by: Depth in Feet scaled 1:240

0	Gamma Ray (cps)	150	-1 CCL 1	10	Neutron (cps)	2100
150	Gamma Ray (cps)	300				



06-27-2014
 Perforated Interval
 696.0 - 704.0 25 Perfs
 2" DML RTG

0	Gamma Ray (cps)	150	-1 CCL 1	10	Neutron (cps)	2100
150	Gamma Ray (cps)	300				