



**COMPENSATED DENSITY  
NEUTRON  
LOG**

Company Palomino Petroleum  
Well #1 Maximum Attitude  
Field Nancy  
County Gove  
State Kansas

Company Palomino Petroleum  
Well #1 Maximum Attitude  
Field Nancy  
County Gove State Kansas

Location: API #: 15 063 22114  
1245' FSL & 1897' FWL  
SEC 4 TWP 15S RGE 27W  
Permanent Datum Ground Level Elevation 2468'  
Log Measured From KB 5' AGL  
Drilling Measured From KB  
Other Services  
DIL  
ML  
BCS  
Elevation  
K.B. 2473'  
D.F. 2472'  
G.L. 2468'

Date	6-17-13
Run Number	One
Depth Driller	4390'
Depth Logger	4390'
Bottom Logged Interval	4367'
Top Log Interval	3500'
Casing Driller	8 5/8" @ 217'
Casing Logger	217'
Bit Size	7 7/8"
Type Fluid in Hole	Chemical
Density / Viscosity	9.3/48
pH / Fluid Loss	11.0/7.2
Source of Sample	Pit
Rm @ Meas. Temp	.5@72degf
Rmf @ Meas. Temp	.38@72degf
Rmc @ Meas. Temp	.6@72degf
Source of Rmf / Rmc	Calculated
Rm @ BHT	.3@120degf
Time Circulation Stopped	5:00 p.m.
Time Logger on Bottom	6:20 p.m.
Maximum Recorded Temperature	120degf
Equipment Number	T127
Location	Hays, KS
Recorded By	Gus Pfannenstiel
Witnessed By	Mr. Ryan Seib

<<< Fold Here >>>

All interpretations are opinions based on inferences from electrical or other measurements and we cannot and do not guarantee the accuracy or correctness of any interpretation, and we shall not, except in the case of gross or willful negligence on our part, be liable or responsible for any loss, costs, damages, or expenses incurred or sustained by anyone resulting from any interpretation made by any of our officers, agents or employees. These interpretations are also subject to our general terms and conditions set out in our current Price Schedule.

Comments

Thanks for using Gemini Wireline LLC  
785-625-1182

8 1/2 W of Utica to Red Chief Rd, 9 N, E Into.



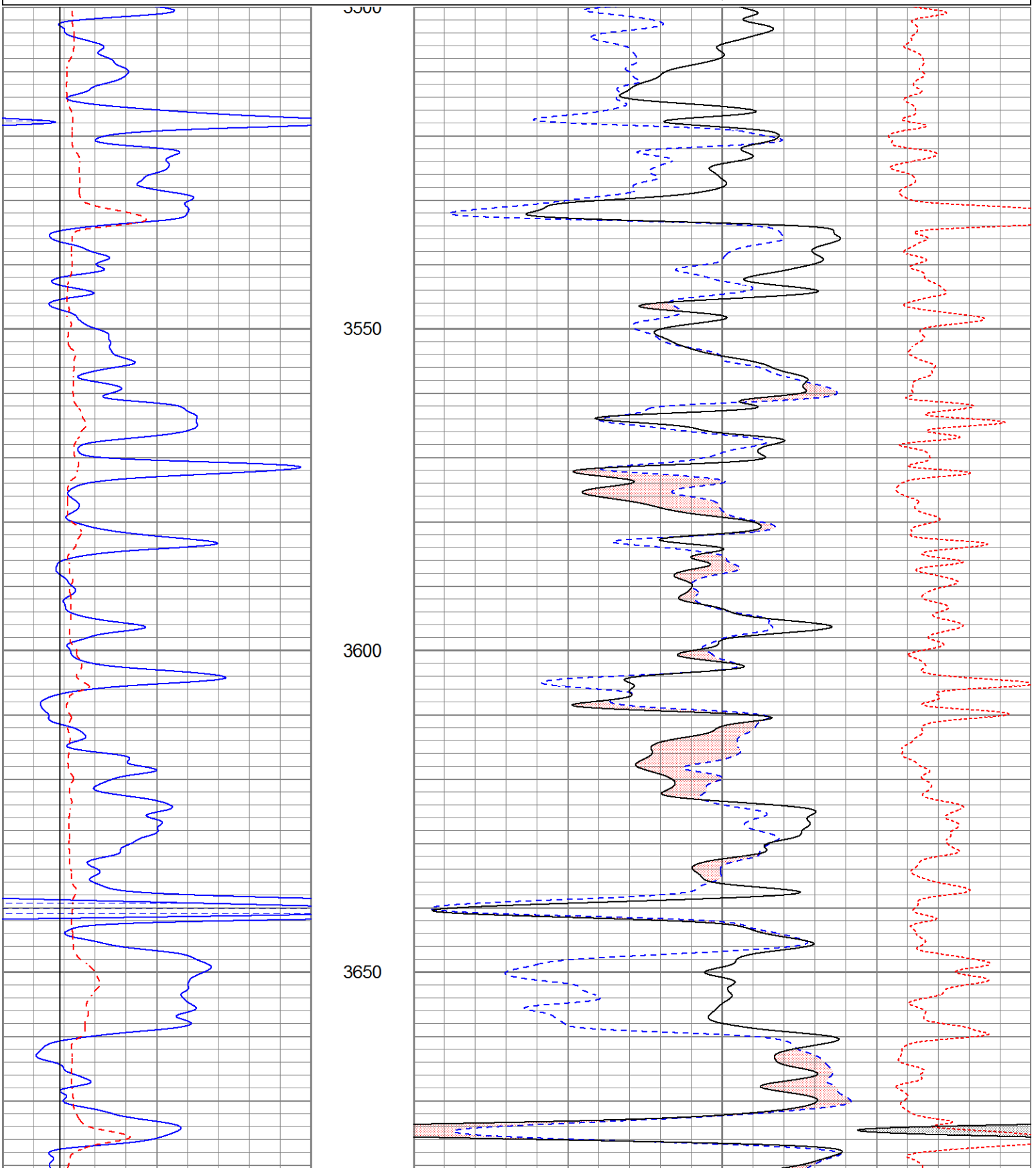
**Main Pass**

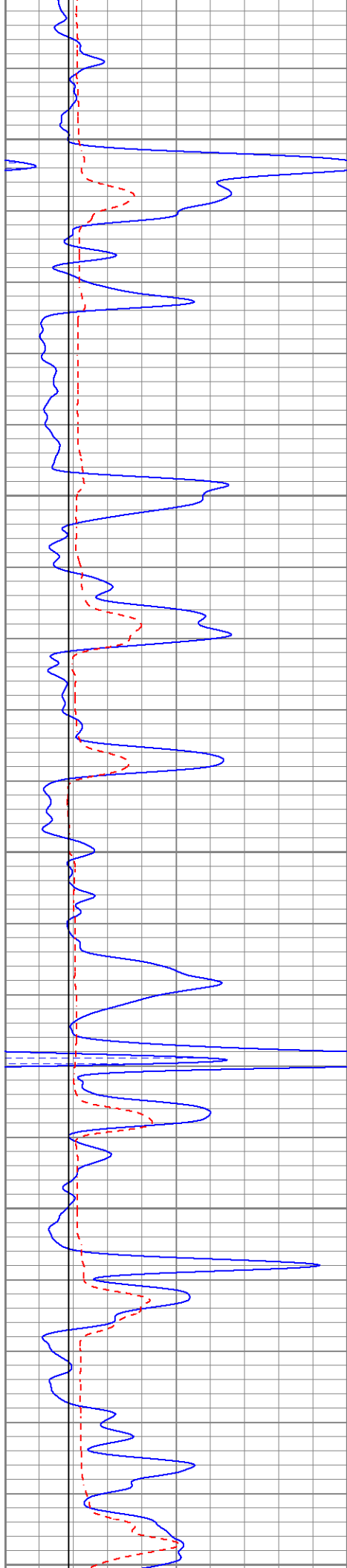
Database File ppmmaximumattitude#1oh.db  
 Dataset Pathname pass2.3  
 Presentation Format kcdnl  
 Dataset Creation Mon Jun 17 20:36:03 2013  
 Charted by Depth in Feet scaled 1:240

0	GR (GAPI)	150
6	DCAL (in)	16
6	BOREID (in)	16

30	NPOR (pu)	-10
30	DPOR (pu)	-10
70	DPOR (pu)	30

-0.25 RHOC (g/cc) 0.25





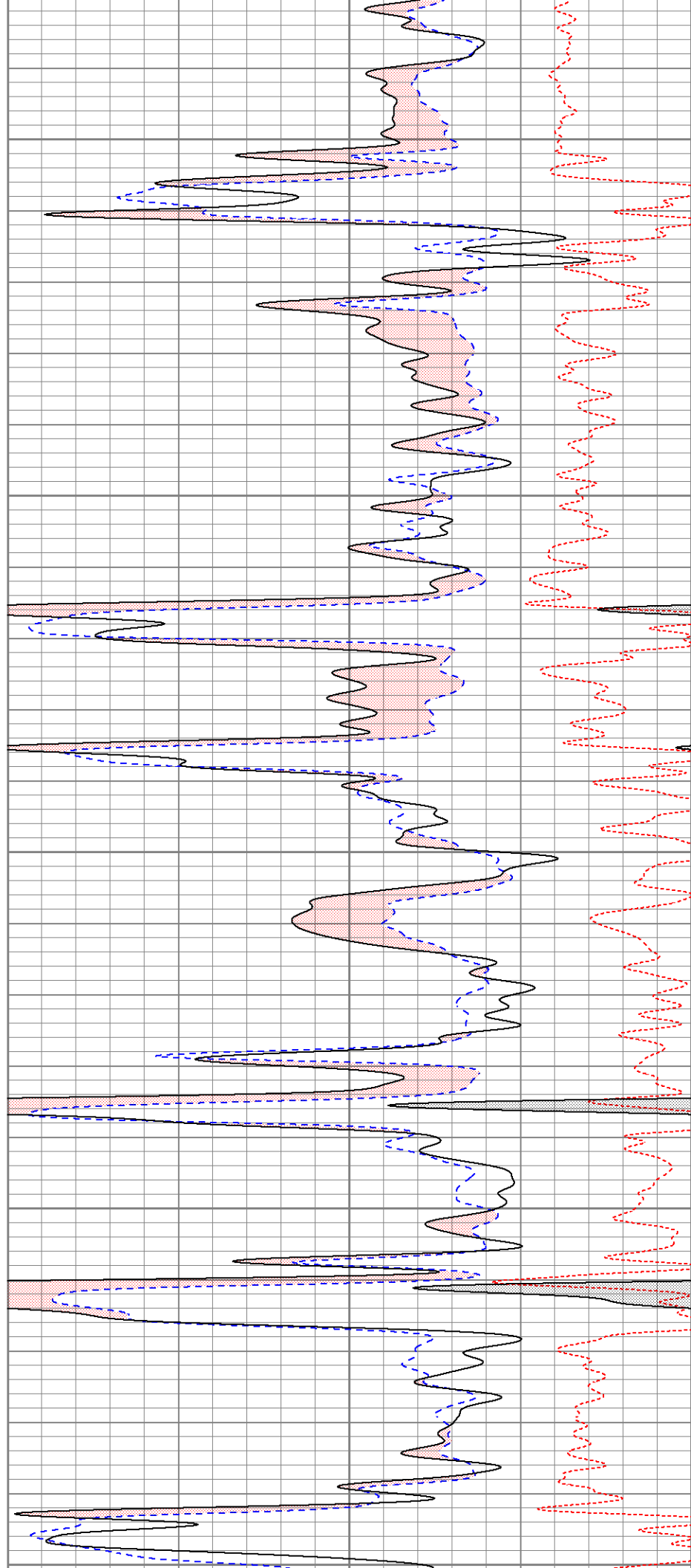
3700

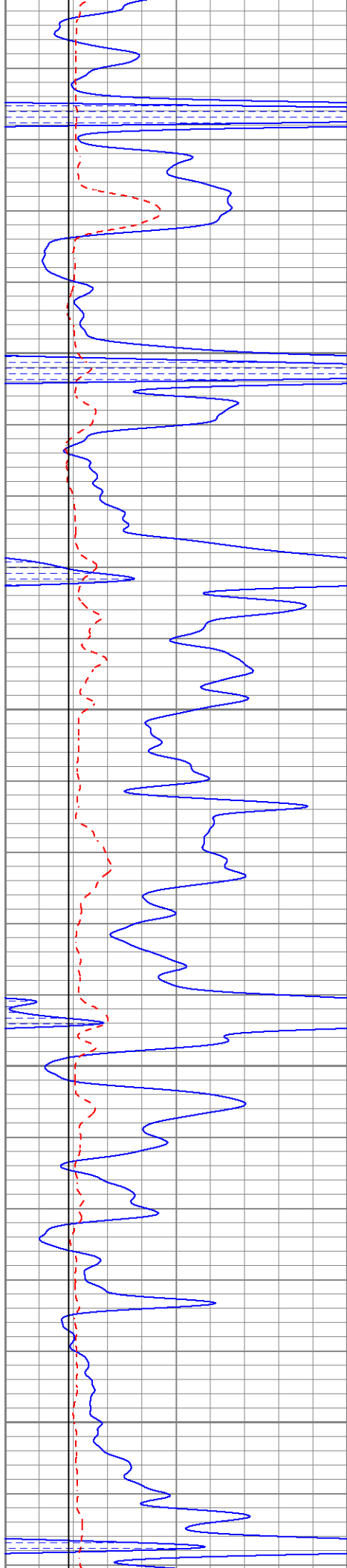
3750

3800

3850

3900





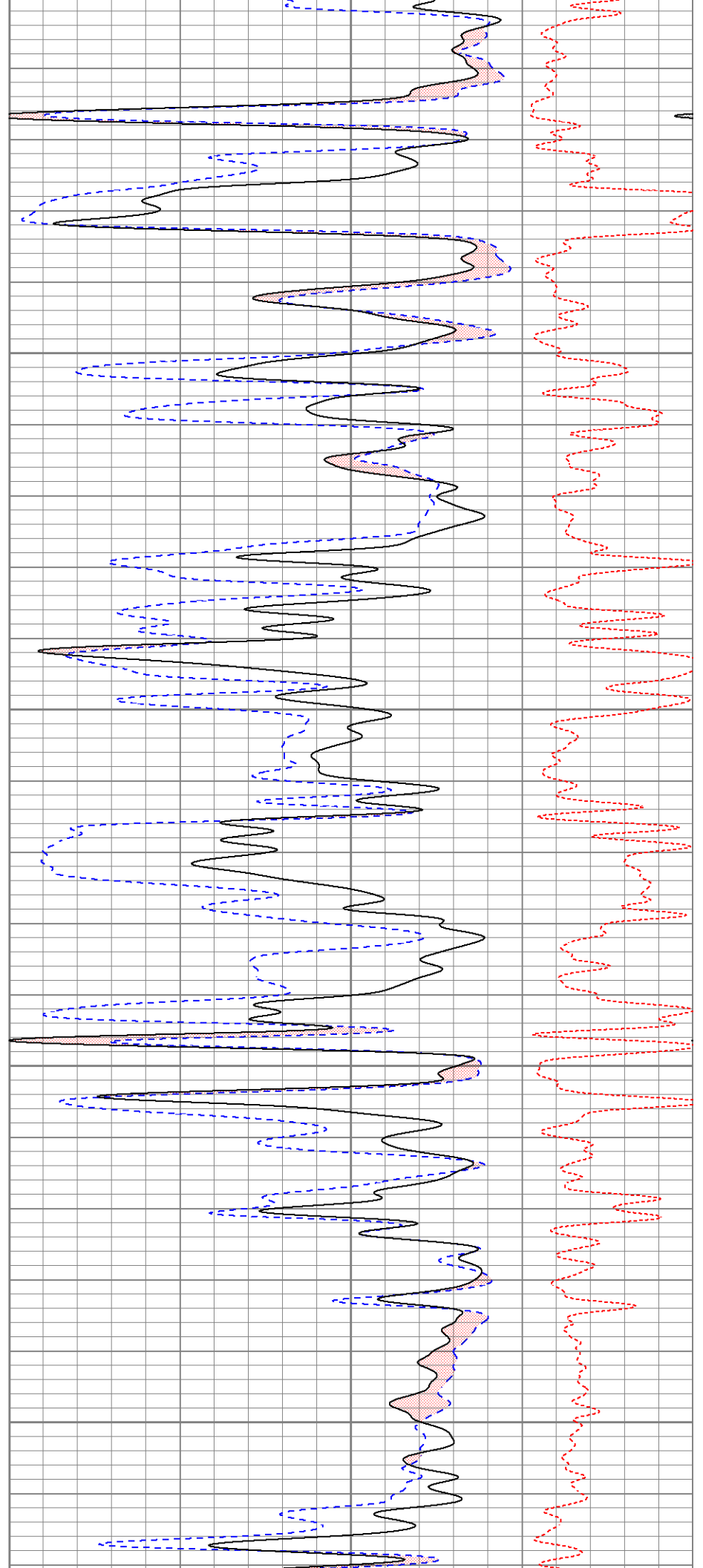
3900

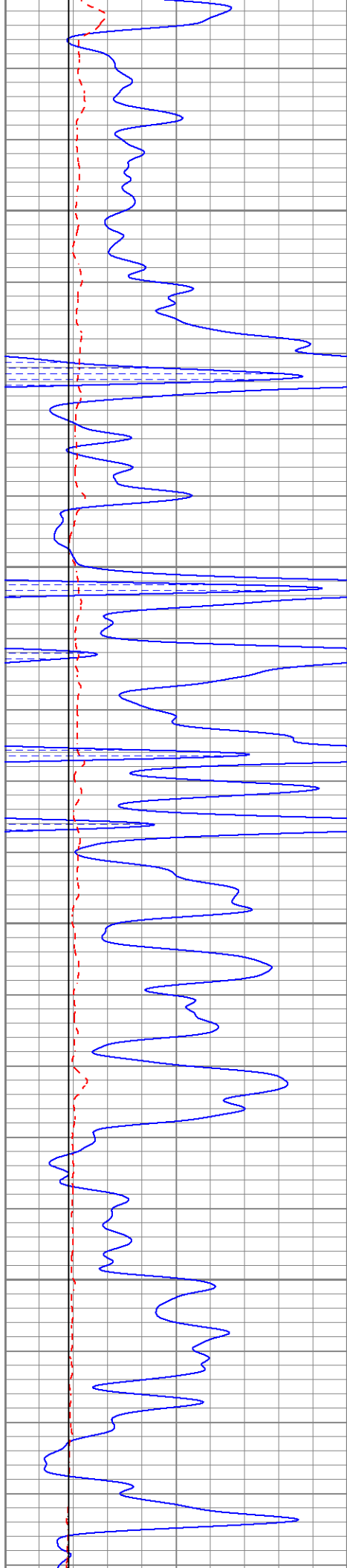
3950

4000

4050

4100



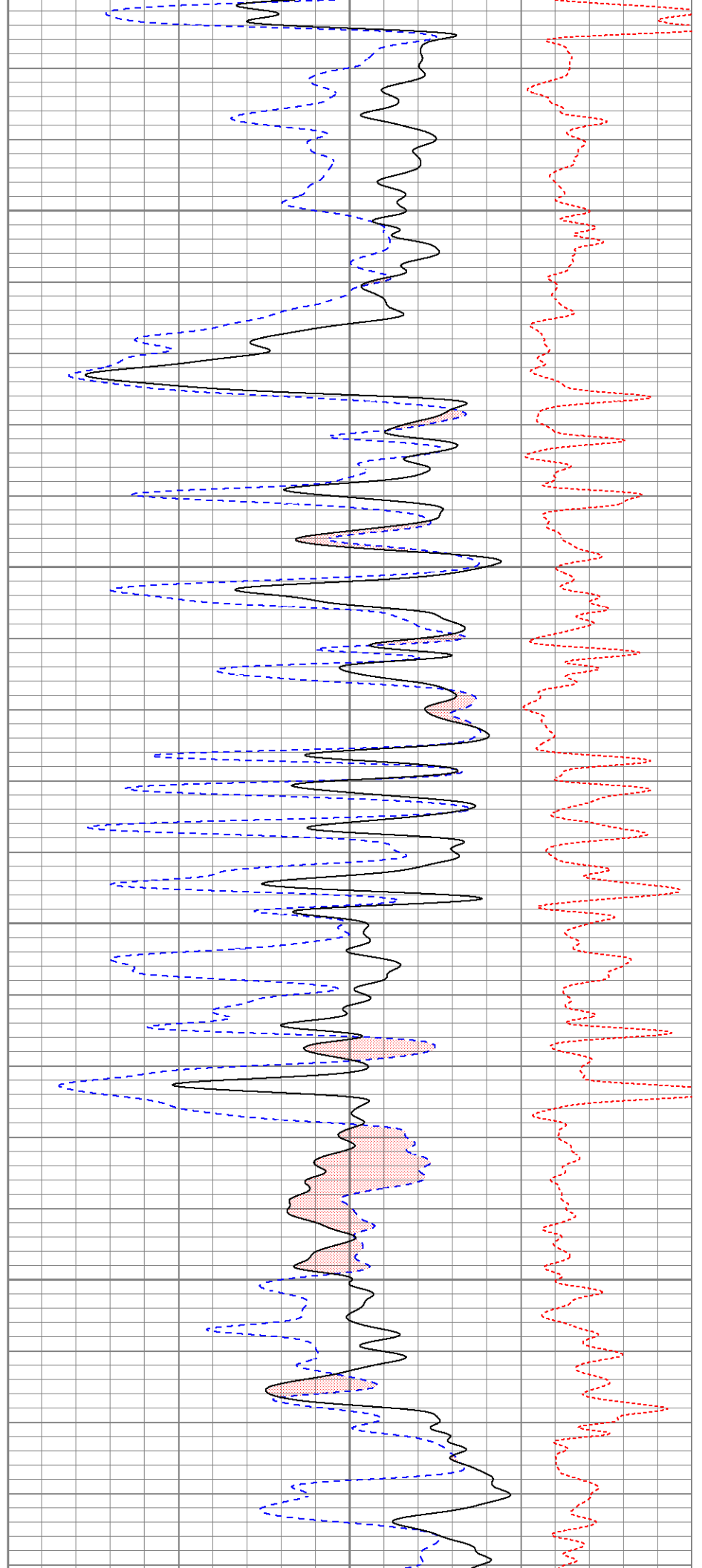


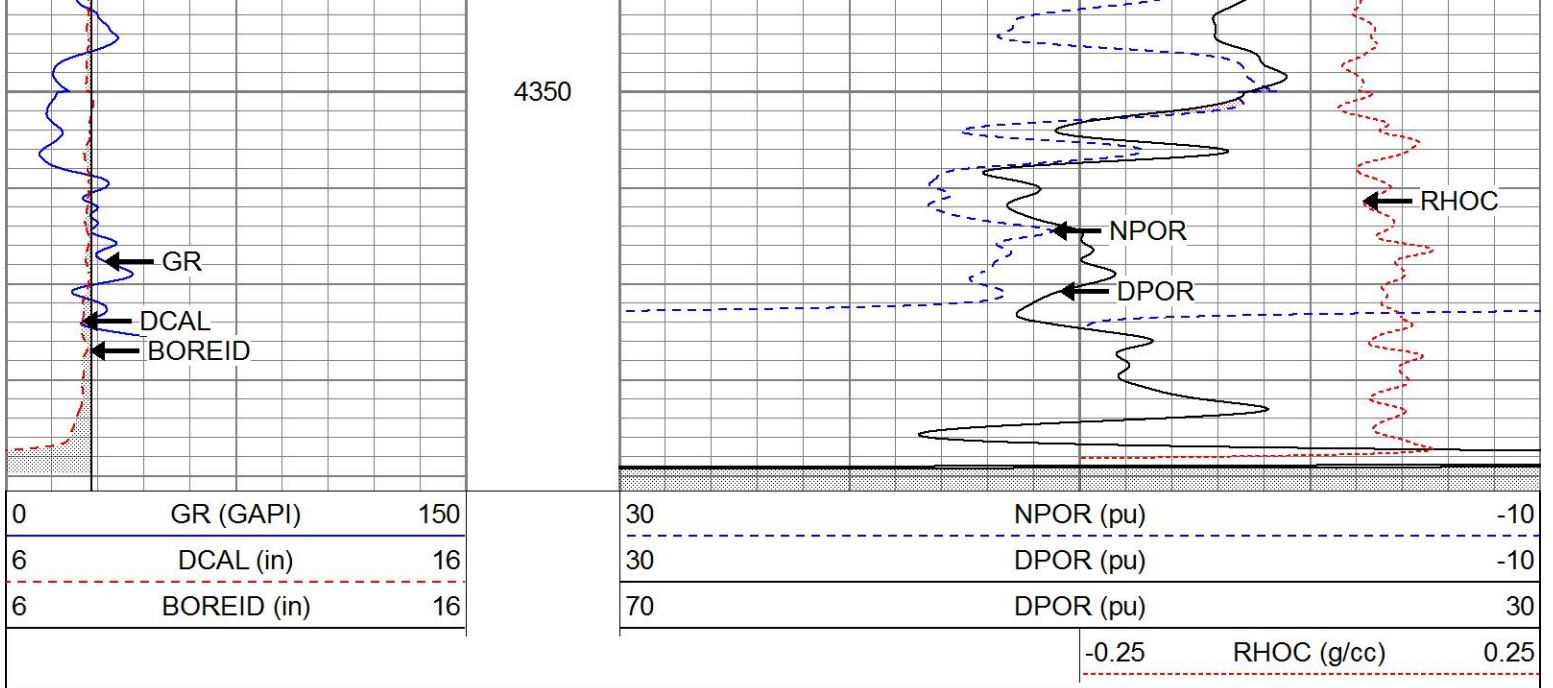
4150

4200

4250

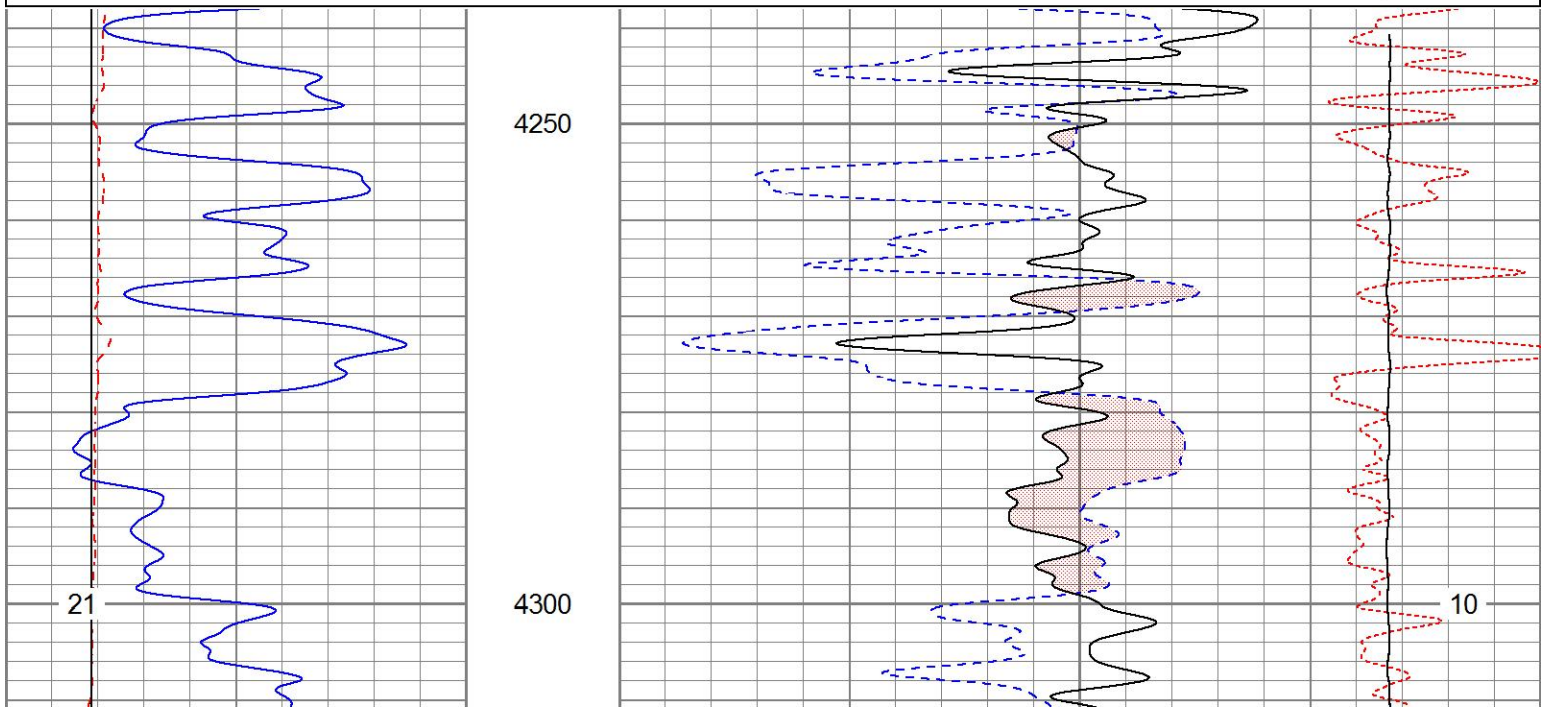
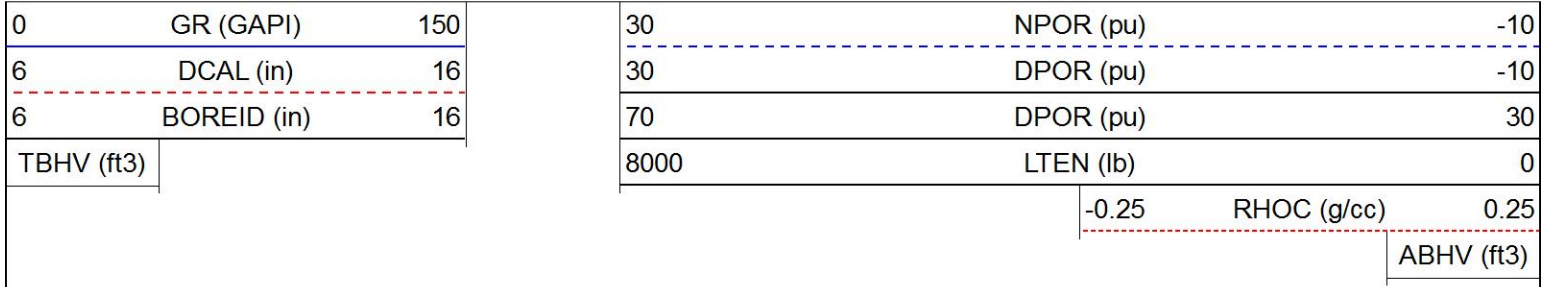
4300

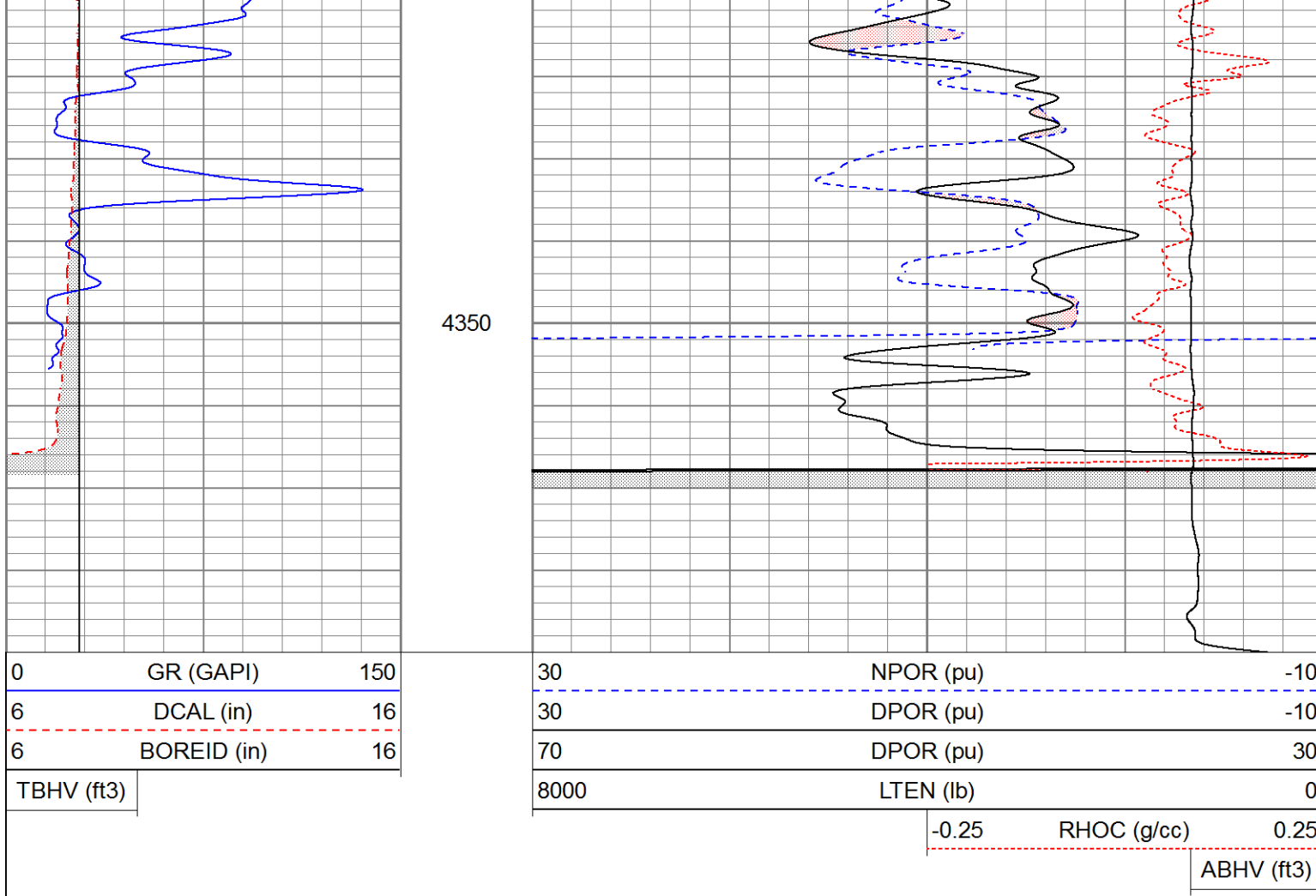




# Repeat Pass

Database File ppmmaximumattitude#1oh.db  
 Dataset Pathname pass1  
 Presentation Format kcdnl  
 Dataset Creation Mon Jun 17 18:45:06 2013  
 Charted by Depth in Feet scaled 1:240





### Calibration Report

Database File ppmaximumattitude#1oh.db  
 Dataset Pathname pass1  
 Dataset Creation Mon Jun 17 18:45:06 2013

### Dual Induction Calibration Report

Serial-Model: 5375-G  
 Surface Cal Performed: Wed Apr 24 10:24:39 2013  
 Downhole Cal Performed: Wed Apr 24 10:24:44 2013  
 After Survey Verification Performed: Wed Apr 24 10:24:46 2013

#### Surface Calibration

Loop:	Readings			V	References			Results	
	Air	Loop			Air	Loop	mmho/m	m	b
Deep	0.004	0.642			0.000	350.000	mmho/m	548.978	-2.319
Medium	0.008	0.744			0.000	400.000	mmho/m	543.196	-4.293
Internal:	Zero		Cal		Zero		Cal	m	b
Deep	0.005	0.642			0.000	350.000	mmho/m	548.752	-2.529
Medium	0.008	0.744			0.000	550.000	mmho/m	746.807	-5.812

#### Downhole Calibration

Internal:	Readings		V	References		Results			
	Zero	Cal		Zero	Cal	m	b		
Deep	0.004	0.642			0.000	350.000	mmho/m	548.978	-2.319
Medium	0.008	0.744			0.000	400.000	mmho/m	543.196	-4.293

Deep	0.271	350.533	mmho/m	0.211	350.355	mmho/m	1.000	-0.060
Medium	-0.023	400.162	mmho/m	-0.066	399.980	mmho/m	1.000	-0.043
Shallow	2.479	0.015	V	500.000	2.000	Ohm-m	202.133	-1.103

After Survey Verification

Internal:	Readings			Targets			Results	
	Zero	Cal		Zero	Cal		m'	b'
Deep	0.000	0.000	mmho/m	0.271	350.533	mmho/m	1.000	-0.060
Medium	0.000	0.000	mmho/m	-0.023	400.162	mmho/m	1.000	-0.043
Shallow	0.000	0.000	Ohm-m	500.000	2.000	Ohm-m	1.000	0.000

Compensated Density Calibration Report

Serial-Model: 2501DHT-DHT  
Source / Verifier: csv-j12 /  
Master Calibration Performed: Mon May 27 11:08:09 2013  
Before Survey Verification Performed:  
After Survey Verification Performed:

Master Calibration

	Density		Far Detector	Near Detector	
Magnesium	1.750	g/cc	721.95	287.97	cps
Aluminum	2.660	g/cc	136.17	188.42	cps
Spine Angle = 75.73			Density/Spine Ratio = 0.529		
	Size		Reading		
Small Ring	8.42	in	6273.19		
Large Ring	14.00	in	10676.90		

Before Survey Verification

Target	Measured
g/cc	g/cc
g/cc	g/cc
g/cc	g/cc

After Survey Verification

Target	Measured
g/cc	g/cc
g/cc	g/cc
g/cc	g/cc

Gamma Ray Calibration Report

Serial Number: 2001  
Tool Model: OH  
Performed: Tue Jun 11 15:41:32 2013

Calibrator Value: 1.0 GAPI

Background Reading: 0.0 cps  
Calibrator Reading: 1.0 cps

Sensitivity: 0.2300 GAPI/cps

Neutron Calibration Report

Serial Number: 5108  
Tool Model: PROBE

Perf. Method:

Tue Jun 11 15:41:41 2013

Calibrator Value:

1

NAPI

Calibrator Reading:

1

cps

Sensitivity:

1

NAPI/cps

Sensor	Offset (ft)	Schematic	Description	Length (ft)	O.D. (in)	Weight (lb)	
NEU	38.26		None	0.75	1.50	5.00	
			NEU-PROBE (5108) Probe	4.92	3.63	85.00	
GR	32.32		GR-OH (2001) 2001	3.56	3.25	40.00	
			DHT (2501DHT) Digital High Temp CDL Tool	9.69	4.00	201.00	
LSD	23.78						
DCAL	23.49						
SSD	23.24						
HEADVOLT	21.47						
SP	10.60		DIL-G (5375) Gearhart	21.47	4.00	345.00	
CILD	10.60						
CILM	6.89						
RLL3	1.70						

Dataset: ppmaximumattitude#1oh.db: field/well/run1/pass1  
 Total length: 40.39 ft  
 Total weight: 676.00 lb  
 O.D.: 4.00 in