



**MICRO
RESISTIVITY
LOG**

Company Palomino Petroleum
Well #1 Maximum Attitude
Field Nancy
County Gove
State Kansas

Company Palomino Petroleum
Well #1 Maximum Attitude
Field Nancy
County Gove State Kansas

Location: 1245' FSL & 1897' FWL
API #: 15 063 22114
SEC 4 TWP 15S RGE 27W
Permanent Datum Ground Level Elevation 2468'
Log Measured From KB 5' AGL
Drilling Measured From KB
Other Services
CDNL
DIL
BCS
Elevation
K.B. 2473'
D.F. 2472'
G.L. 2468'

Date	6-17-13
Run Number	Two
Depth Driller	4390'
Depth Logger	4390'
Bottom Logged Interval	4378'
Top Log Interval	3500'
Casing Driller	8 5/8" @ 217'
Casing Logger	217'
Bit Size	7 7/8"
Type Fluid in Hole	Chemical
Density / Viscosity	9.3/48
pH / Fluid Loss	11.0/7.2
Source of Sample	Pit
Rm @ Meas. Temp	.5@72degf
Rmf @ Meas. Temp	.38@72degf
Rmc @ Meas. Temp	.6@72degf
Source of Rmf / Rmc	Calculated
Rm @ BHT	.3@120degf
Time Circulation Stopped	5:00 p.m.
Time Logger on Bottom	8:50 p.m.
Maximum Recorded Temperature	120degf
Equipment Number	T127
Location	Hays, KS
Recorded By	Gus Pfannenstiel
Witnessed By	Mr. Ryan Seib

<<< Fold Here >>>

All interpretations are opinions based on inferences from electrical or other measurements and we cannot and do not guarantee the accuracy or correctness of any interpretation, and we shall not, except in the case of gross or willful negligence on our part, be liable or responsible for any loss, costs, damages, or expenses incurred or sustained by anyone resulting from any interpretation made by any of our officers, agents or employees. These interpretations are also subject to our general terms and conditions set out in our current Price Schedule.

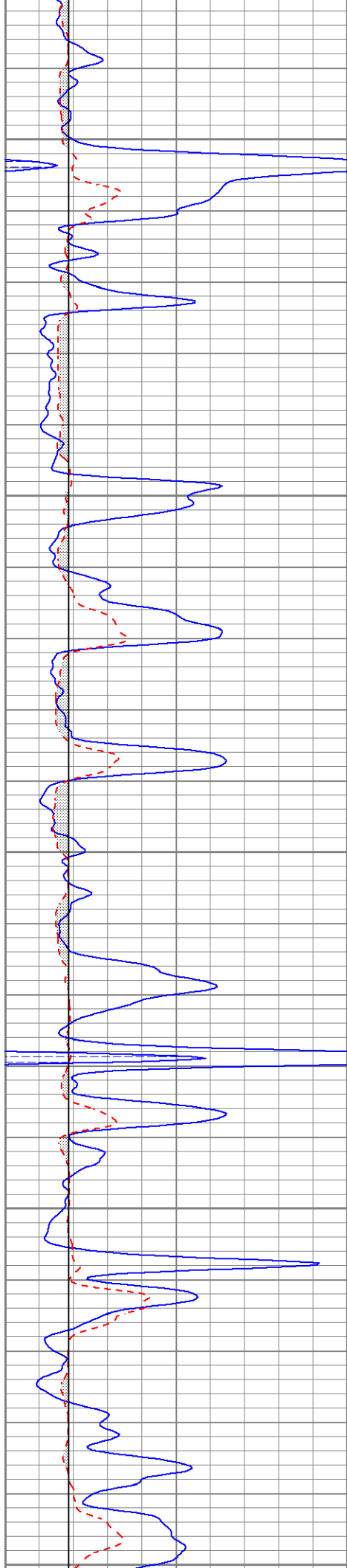
Comments

Thanks for using Gemini Wireline LLC
785-625-1182

8 1/2 W of Utica to Red Chief Rd, 9 N, E Into.



Main Pass



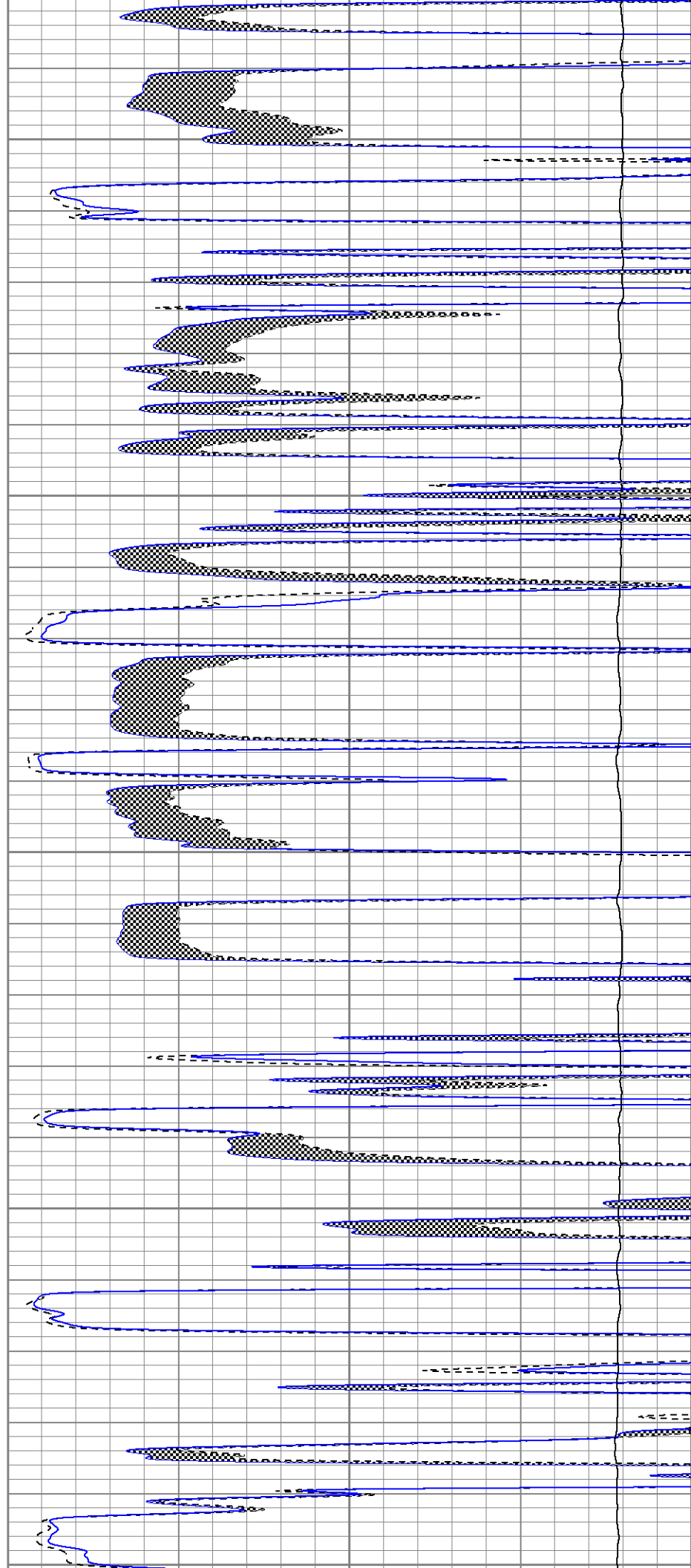
3700

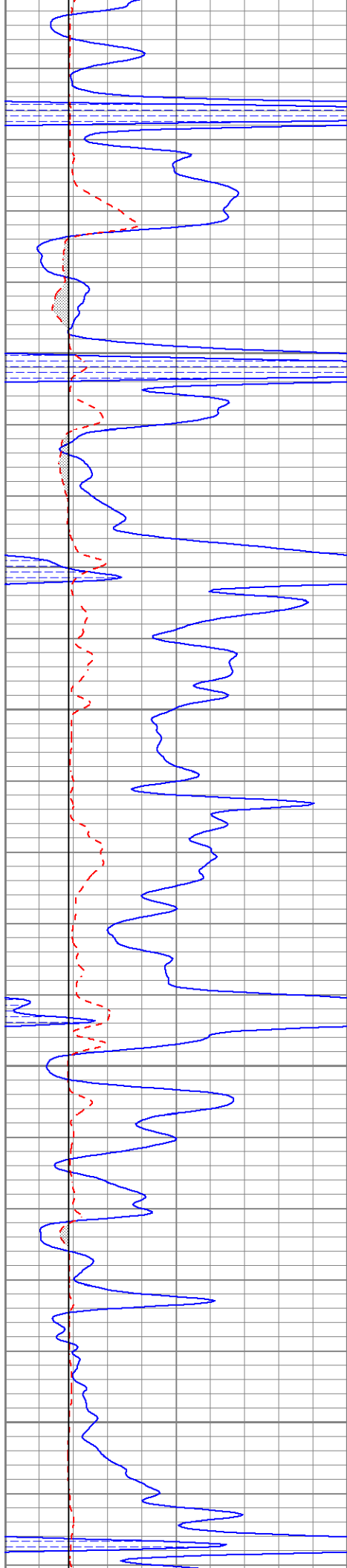
3750

3800

3850

3900





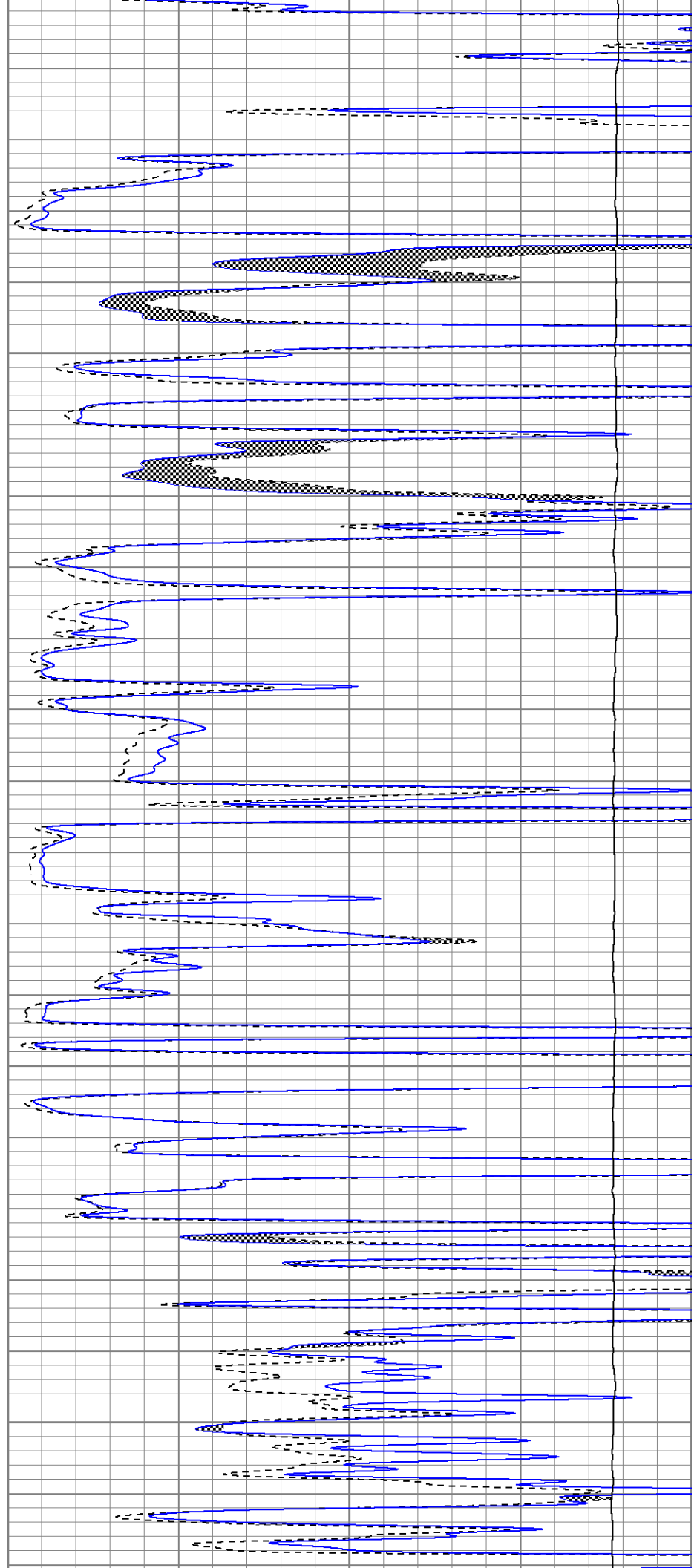
3850

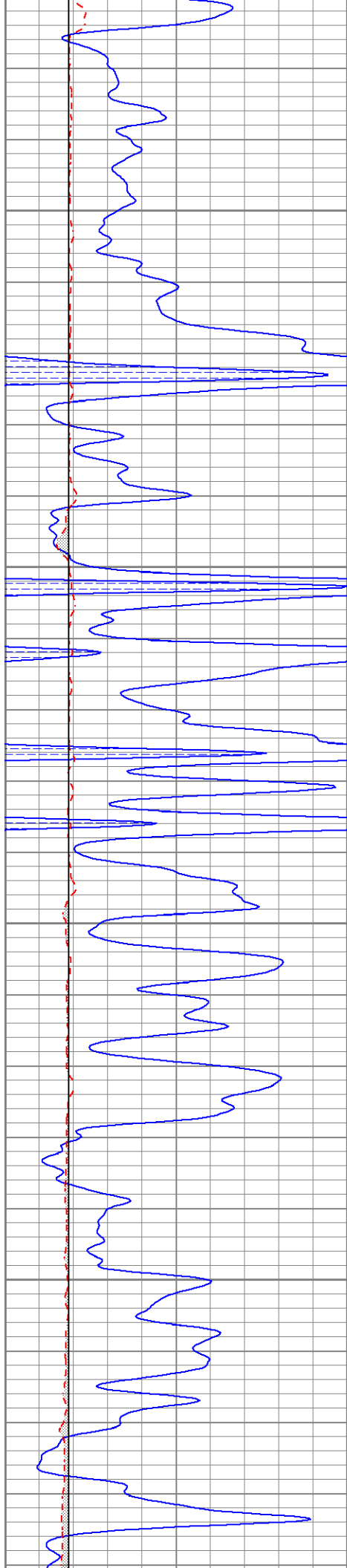
3950

4000

4050

4100



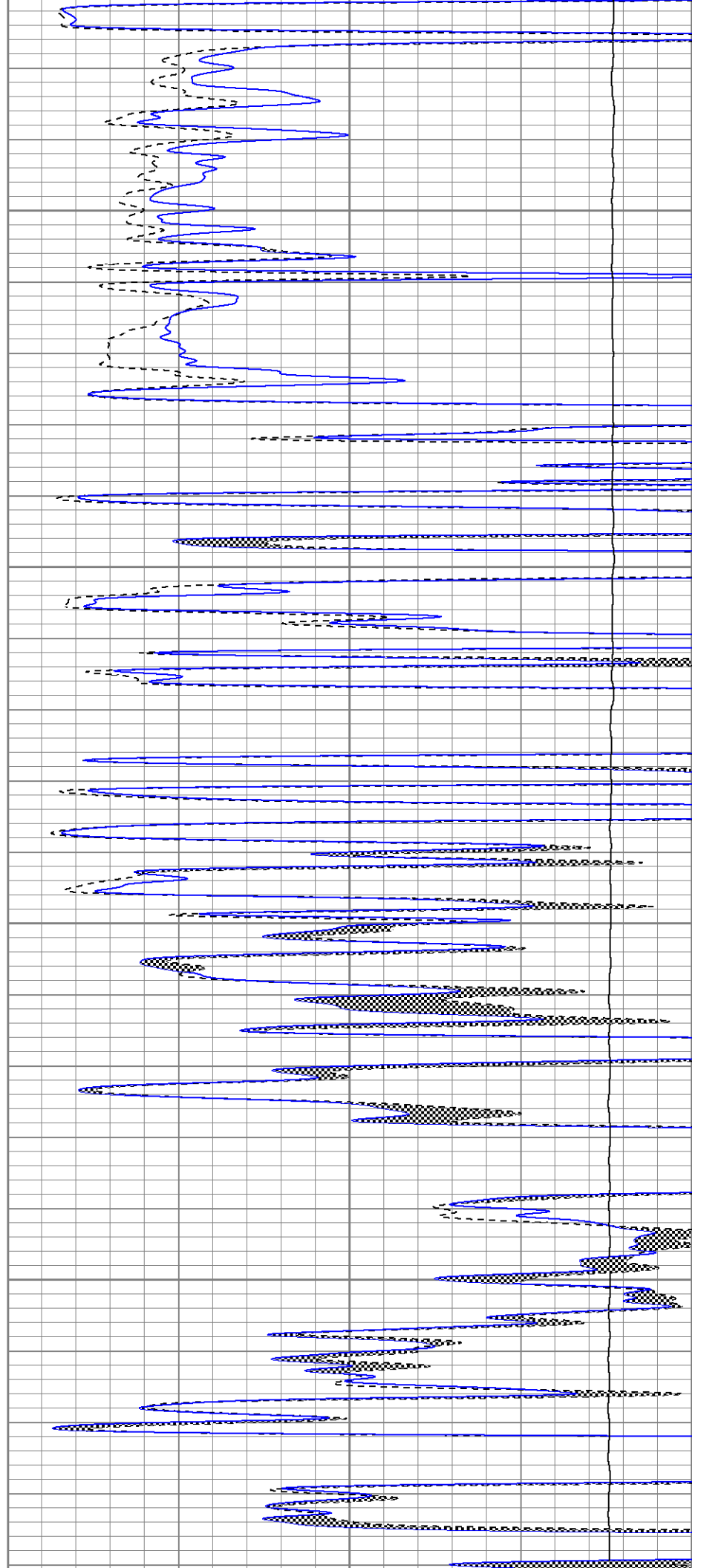


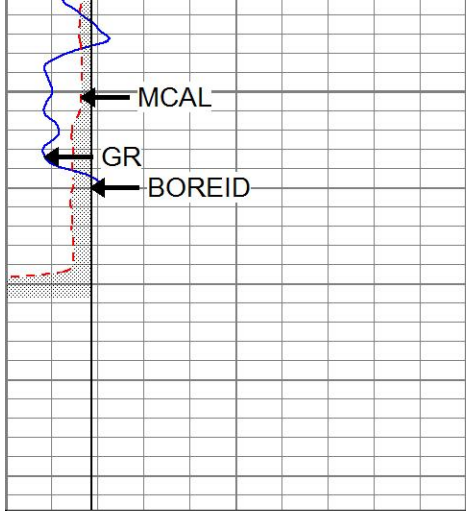
4150

4200

4250

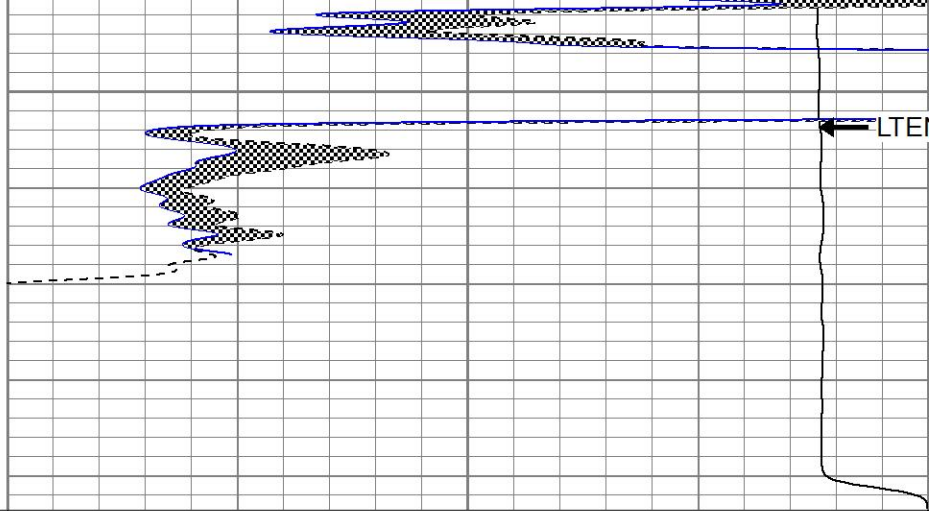
4300





4350

0	GR (GAPI)	150
6	MCAL (in)	16
6	BOREID (in)	16



LTEI

0	MN 2" (Ohm-m)	20
0	MI 1" (Ohm-m)	20
10000	LTEN (lb)	0

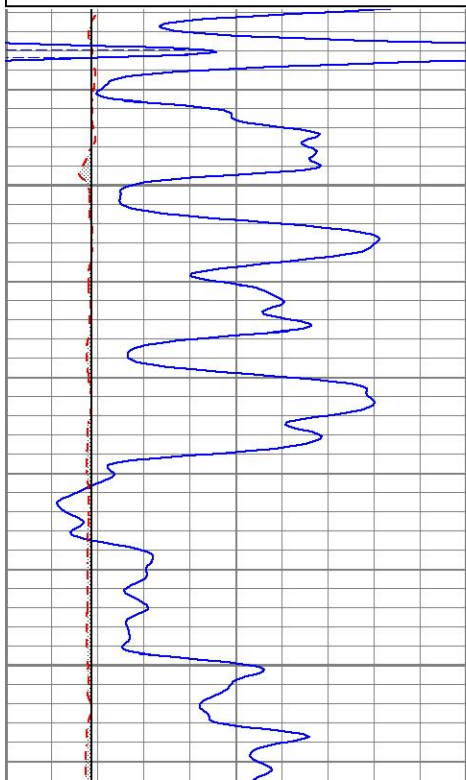


Repeat Pass

Database File ppmaximumattitude#1oh.db
 Dataset Pathname pass4
 Presentation Format kml
 Dataset Creation Mon Jun 17 21:04:00 2013
 Charted by Depth in Feet scaled 1:240

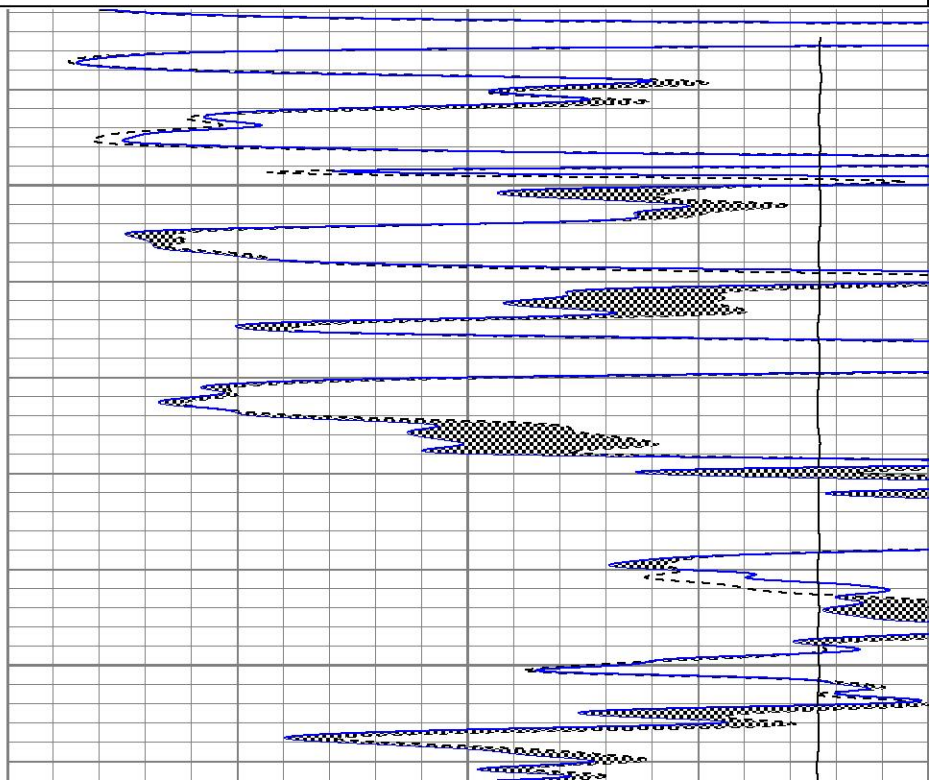
0	GR (GAPI)	150
6	MCAL (in)	16
6	BOREID (in)	16

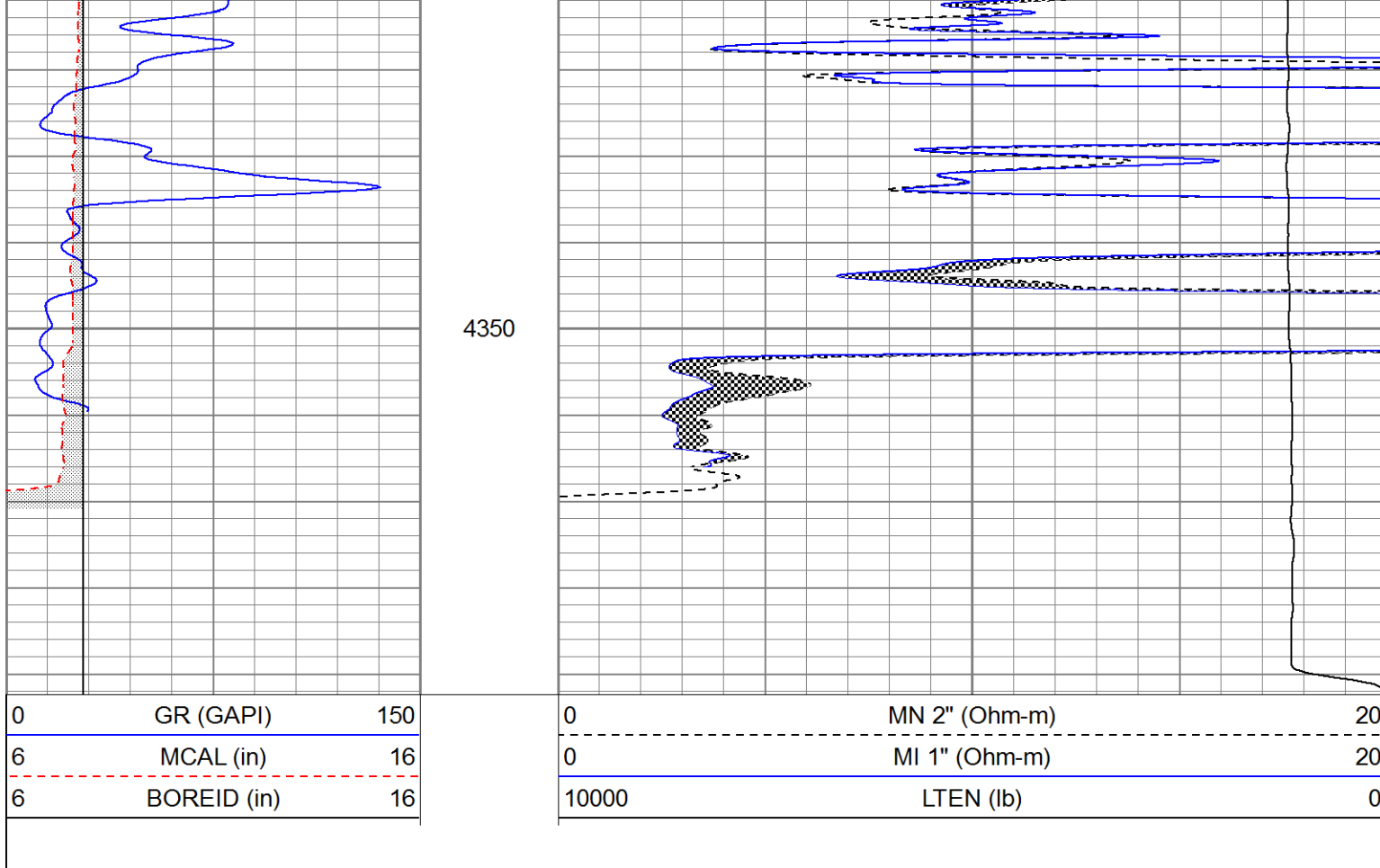
0	MN 2" (Ohm-m)	20
0	MI 1" (Ohm-m)	20
10000	LTEN (lb)	0



4250

4300





Calibration Report

Database File ppmmaximumattitude#1oh.db
 Dataset Pathname pass4
 Dataset Creation Mon Jun 17 21:04:00 2013

Microlog Calibration Report

Serial-Model: 012-Pengo
 Performed: Tue Feb 19 03:37:49 2013

	Readings			V	References			Results	
	Zero	Cal			Zero	Cal		m	b
Normal	0.0254	0.4358		0.0000	12.0000	Ohm-m	29.2405	-0.7423	
Inverse	0.0063	0.5619		0.0000	8.5000	Ohm-m	15.2987	-0.0967	
Caliper	3.2460	6.8378		8.3000	15.0000	in	1.8653	2.2452	

Gamma Ray Calibration Report

Serial Number: 2000
 Tool Model: P2000
 Performed: Fri Mar 15 09:10:59 2013

Calibrator Value: 1.0 GAPI

Background Reading: 0.0 cps
 Calibrator Reading: 1.0 cps

Sensitivity: 0.2200 GAPI/cps

Sensor	Offset (ft)	Schematic	Description	Length (ft)	O.D. (in)	Weight (lb)
GR	28.59		GR-P2000 (2000)	3.67	3.25	40.00

MCAL	21.51		ML-Pengo (012)	6.97	3.50	100.00	
MI	21.51						
MN	21.51						
WVF4	14.25			SLT-G (101127) Sonic	15.71	3.50	250.00
WVF3	13.25						
WVF2	10.25						
WVF1	9.25		OHlong Open Hole long Centralizer	4.50	3.50	50.00	

Dataset: ppmaximumattitude#1oh.db: field/well/run1/pass4
 Total length: 30.84 ft
 Total weight: 440.00 lb
 O.D.: 3.50 in