



**BOREHOLE
COMPENSATED
SONIC
LOG**

Company Palomino Petroleum
Well #1 Maximum Attitude
Field Nancy
County Gove
State Kansas

Company Palomino Petroleum
Well #1 Maximum Attitude
Field Nancy
County Gove State Kansas

Location: API #: 15 063 22114
1245' FSL & 1897' FWL
SEC 4 TWP 15S RGE 27W
Permanent Datum Ground Level Elevation 2468'
Log Measured From KB 5' AGL
Drilling Measured From KB
Other Services
CDNL
DIL
ML
Elevation
K.B. 2473'
D.F. 2472'
G.L. 2468'

Date	6-17-13
Run Number	Two
Depth Driller	4390'
Depth Logger	4390'
Bottom Logged Interval	4382'
Top Log Interval	400'
Casing Driller	8 5/8" @ 217'
Casing Logger	217'
Bit Size	7 7/8"
Type Fluid in Hole	Chemical
Density / Viscosity	9.3/48
pH / Fluid Loss	11.0/7.2
Source of Sample	Pit
Rm @ Meas. Temp	.5@72degf
Rmf @ Meas. Temp	.38@72degf
Rmc @ Meas. Temp	.6@72degf
Source of Rmf / Rmc	Calculated
Rm @ BHT	.3@120degf
Time Circulation Stopped	5:00 p.m.
Time Logger on Bottom	8:50 p.m.
Maximum Recorded Temperature	120degf
Equipment Number	T127
Location	Hays, KS
Recorded By	Gus Pfannenstiel
Witnessed By	Mr. Ryan Seib

<<< Fold Here >>>

All interpretations are opinions based on inferences from electrical or other measurements and we cannot and do not guarantee the accuracy or correctness of any interpretation, and we shall not, except in the case of gross or willful negligence on our part, be liable or responsible for any loss, costs, damages, or expenses incurred or sustained by anyone resulting from any interpretation made by any of our officers, agents or employees. These interpretations are also subject to our general terms and conditions set out in our current Price Schedule.

Comments

Thanks for using Gemini Wireline LLC
785-625-1182

8 1/2 W of Utica to Red Chief Rd, 9 N, E Into.

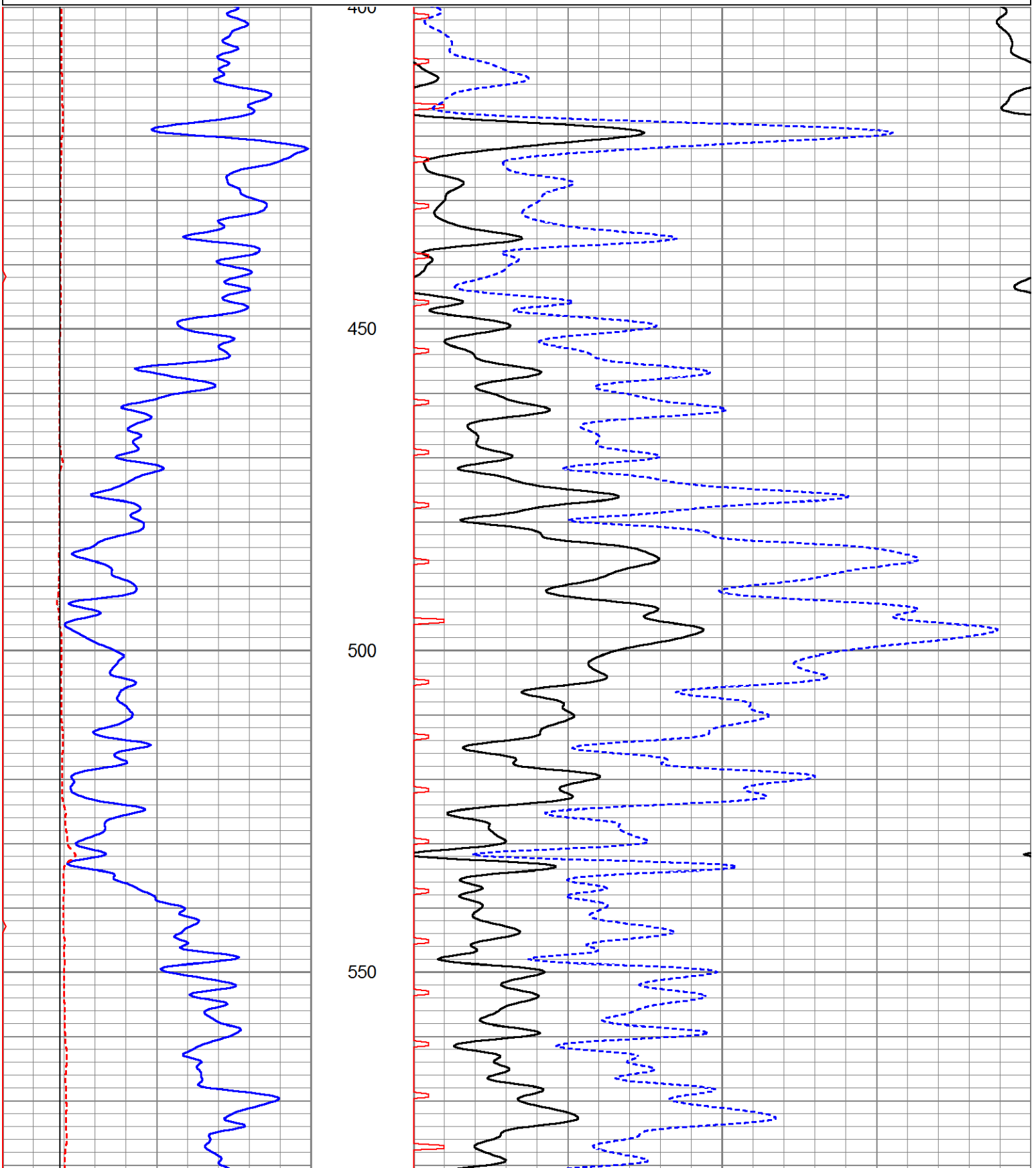


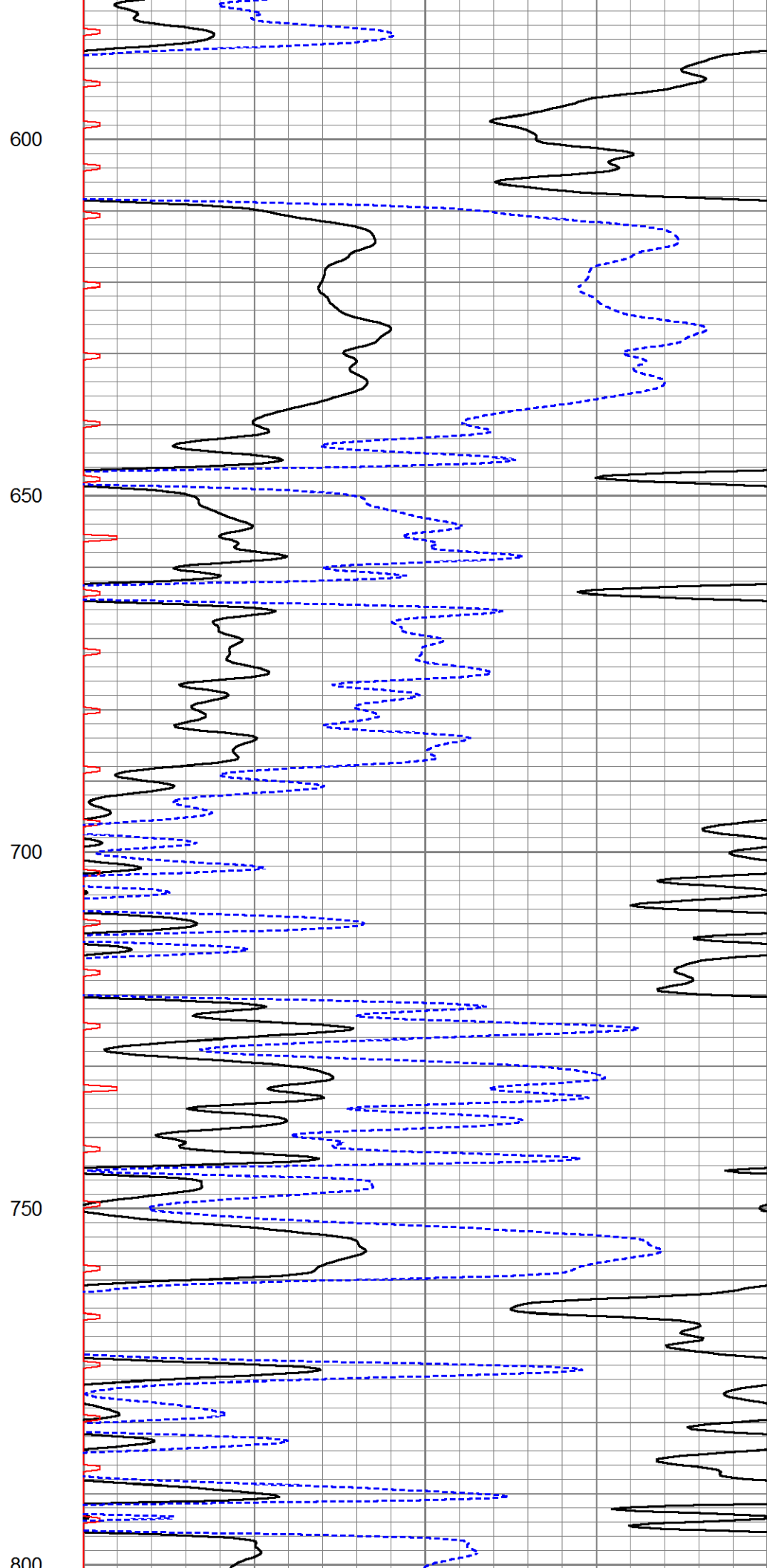
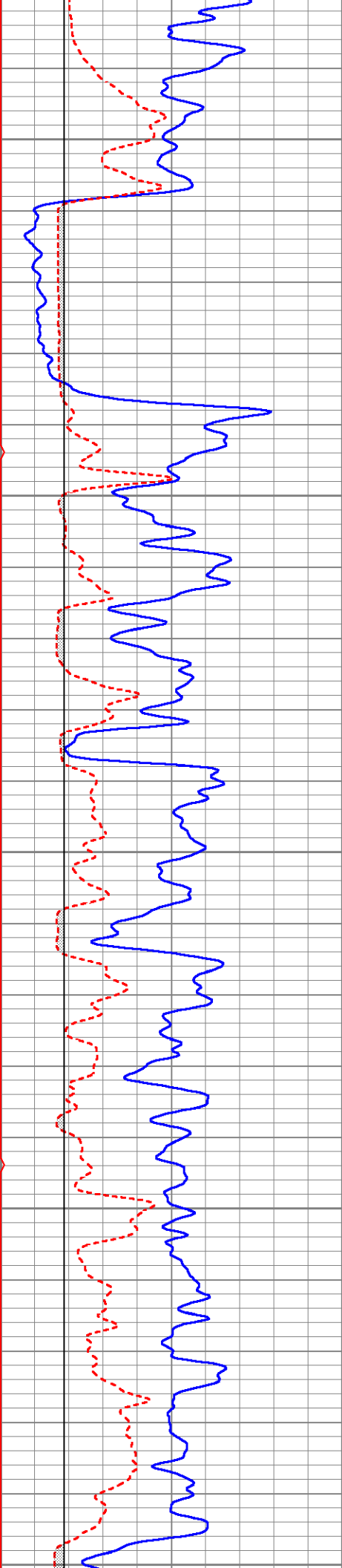
Main Pass

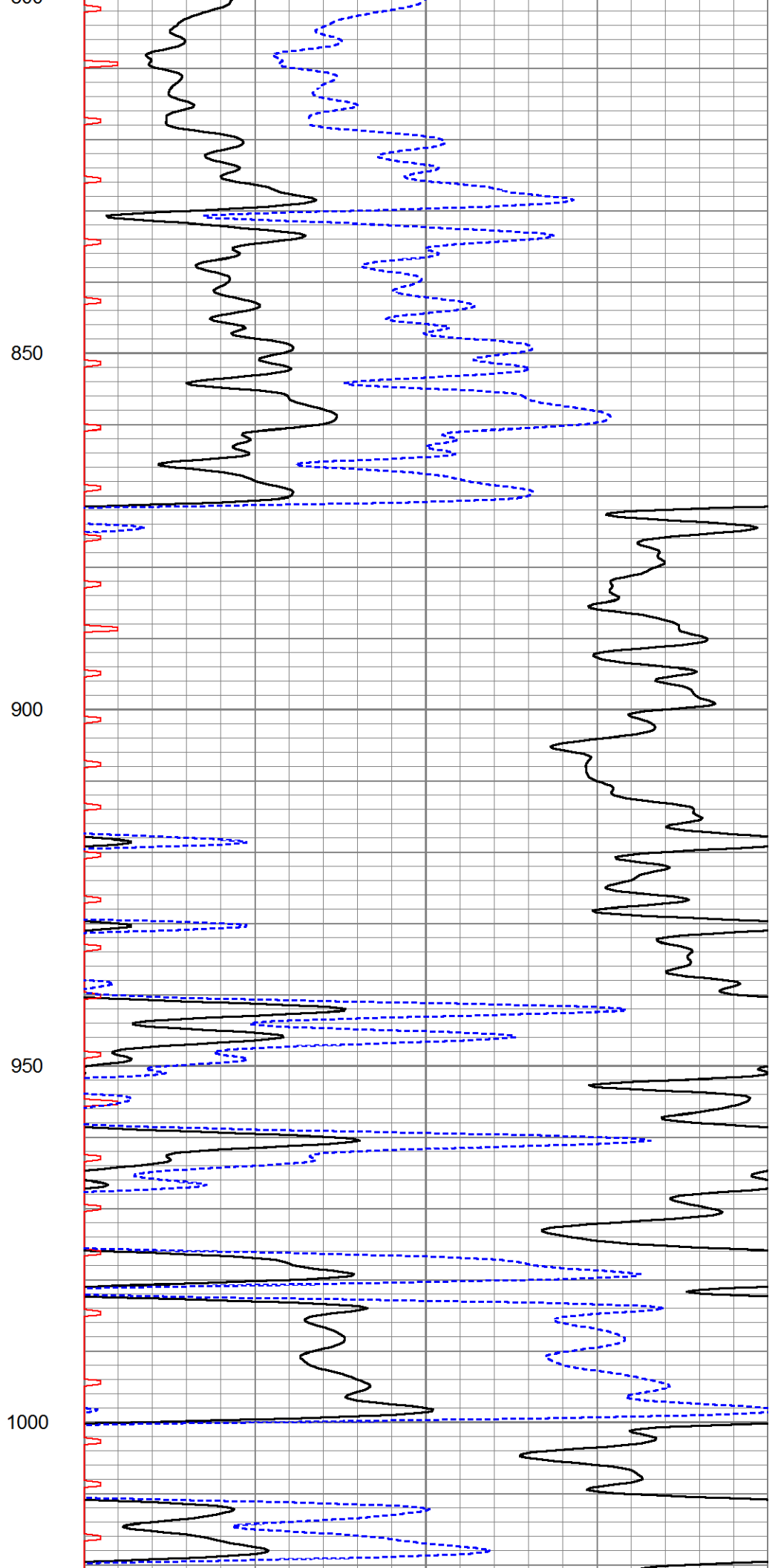
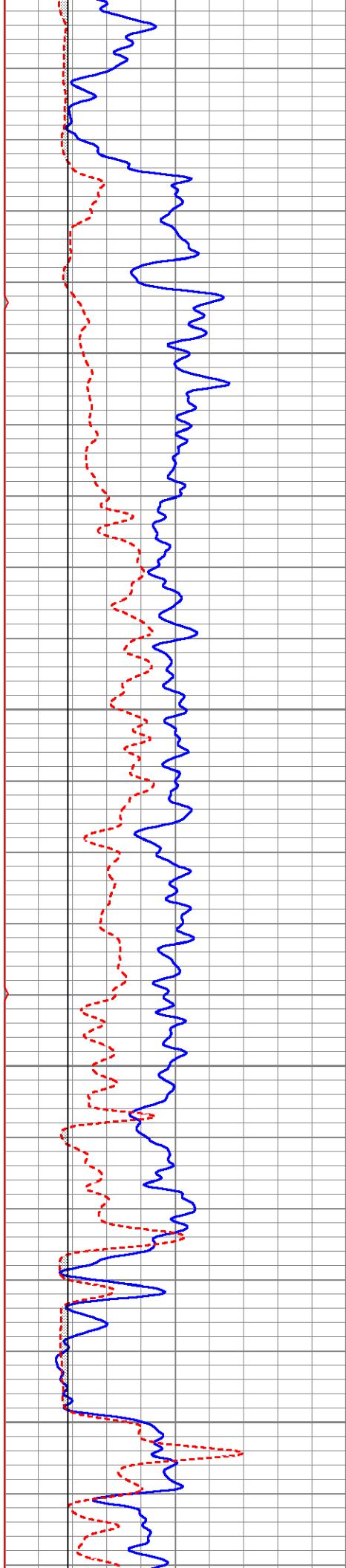
Database File ppmmaximumattitude#1oh.db
 Dataset Pathname pass5
 Presentation Format kbc
 Dataset Creation Mon Jun 17 21:11:49 2013
 Charted by Depth in Feet scaled 1:240

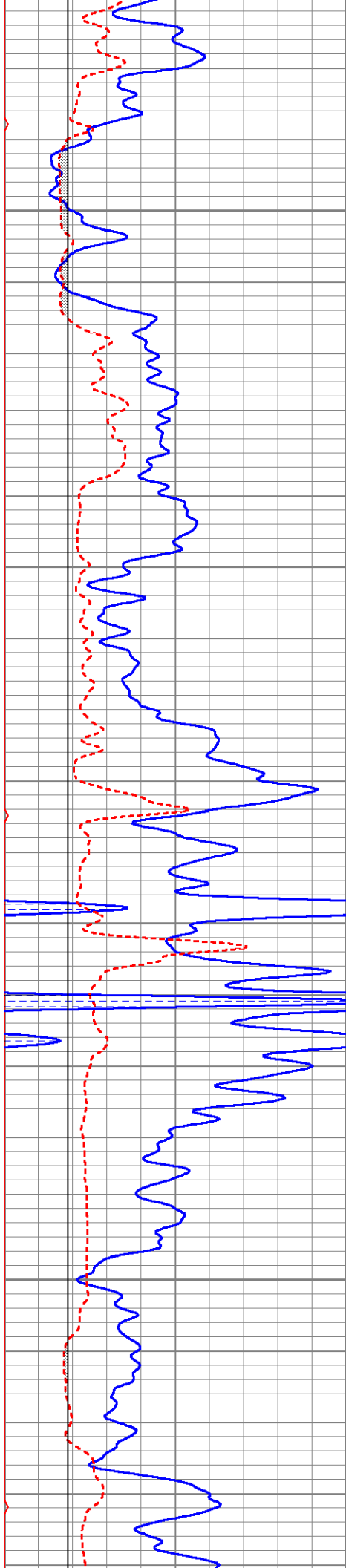
0	GR (GAPI)	150
6	MCAL (in)	16
6	BOREID (in)	16

140	DT (usec/ft)	40
30	SPOR (pu)	-10
0	ITT (msec)	20







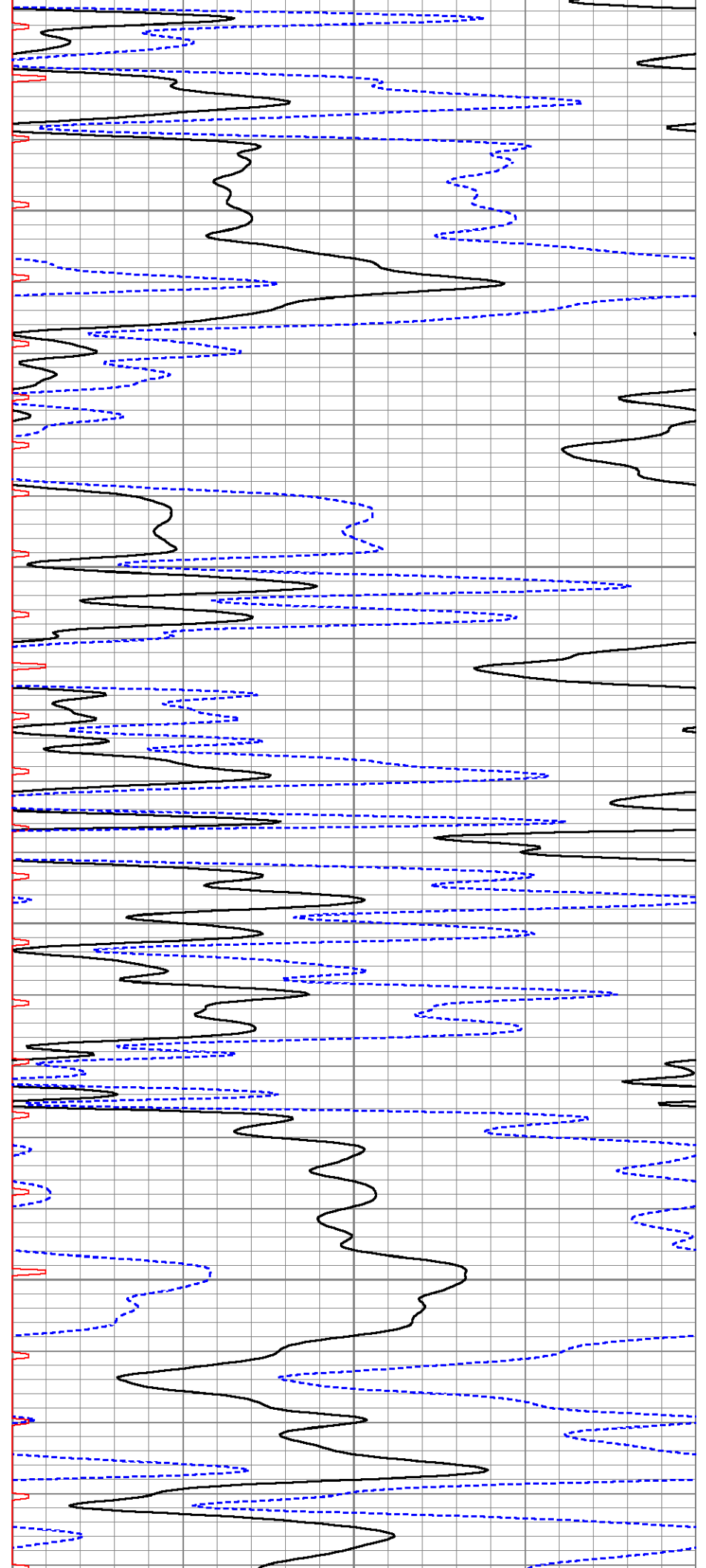


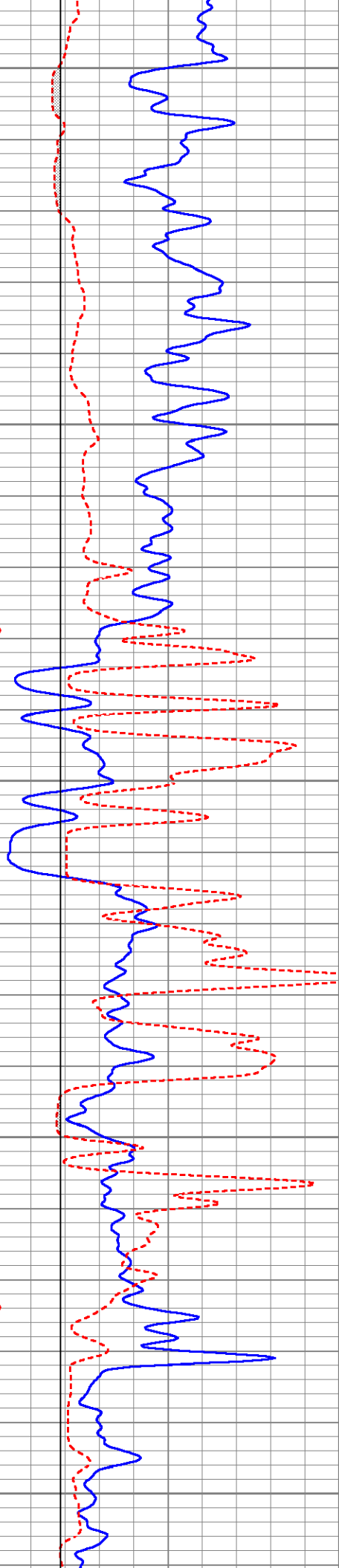
1050

1100

1150

1200





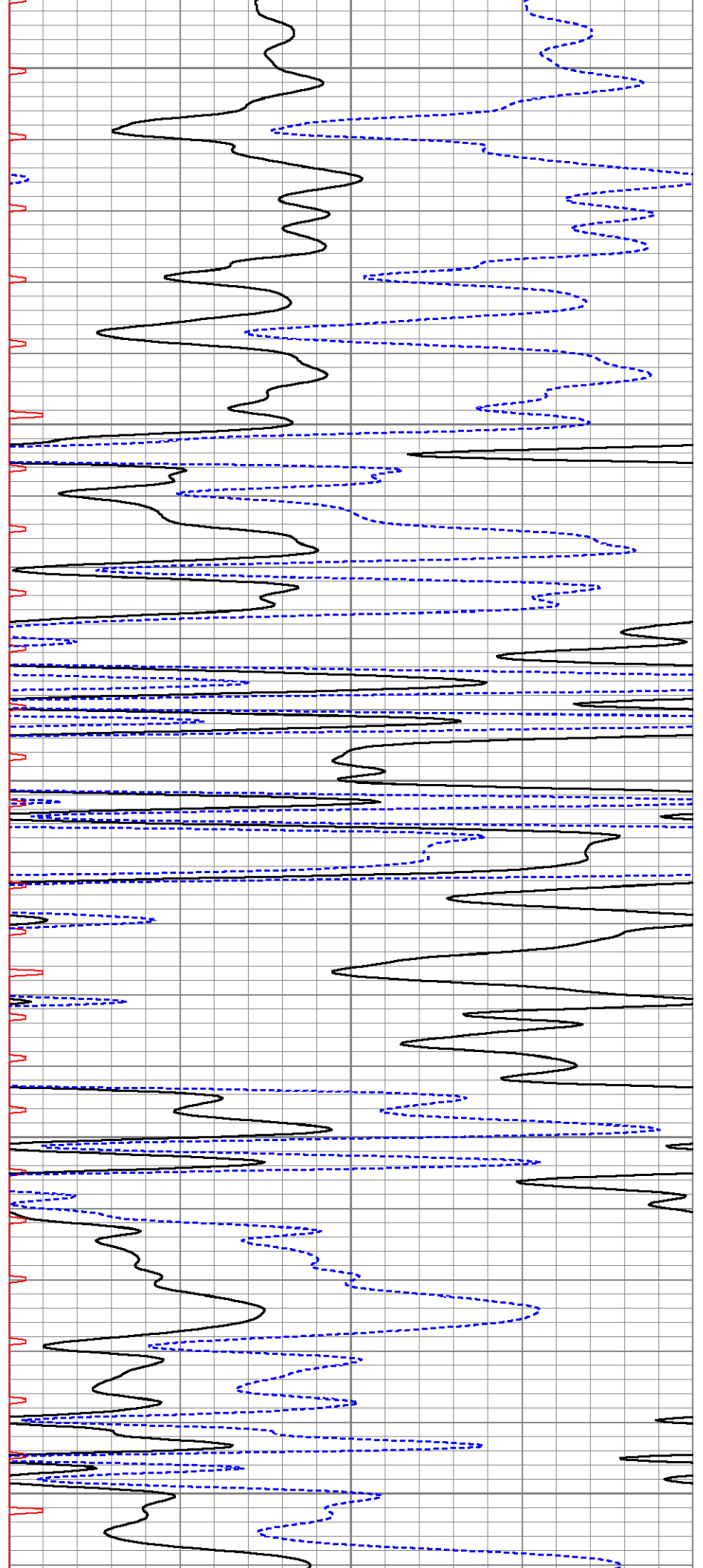
1250

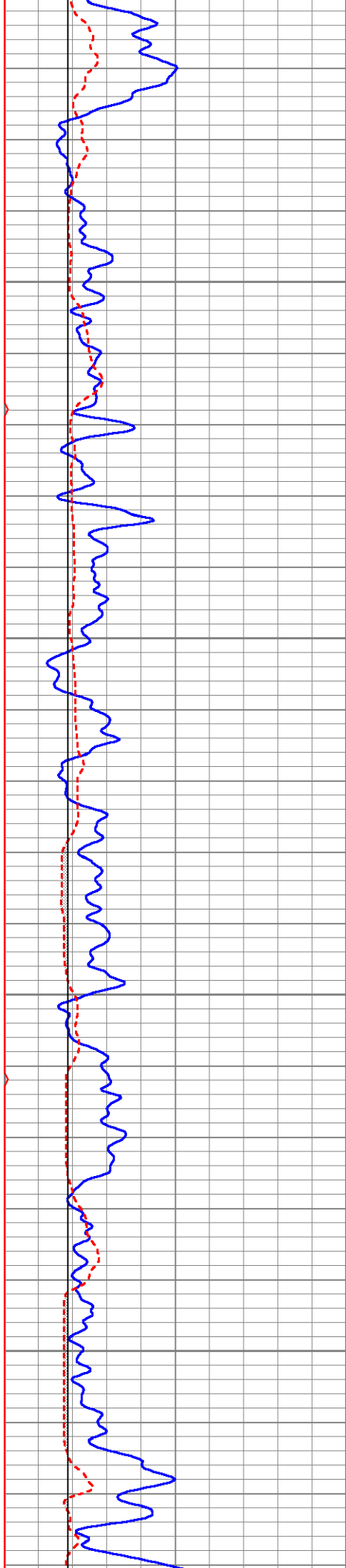
1300

1350

1400

1450



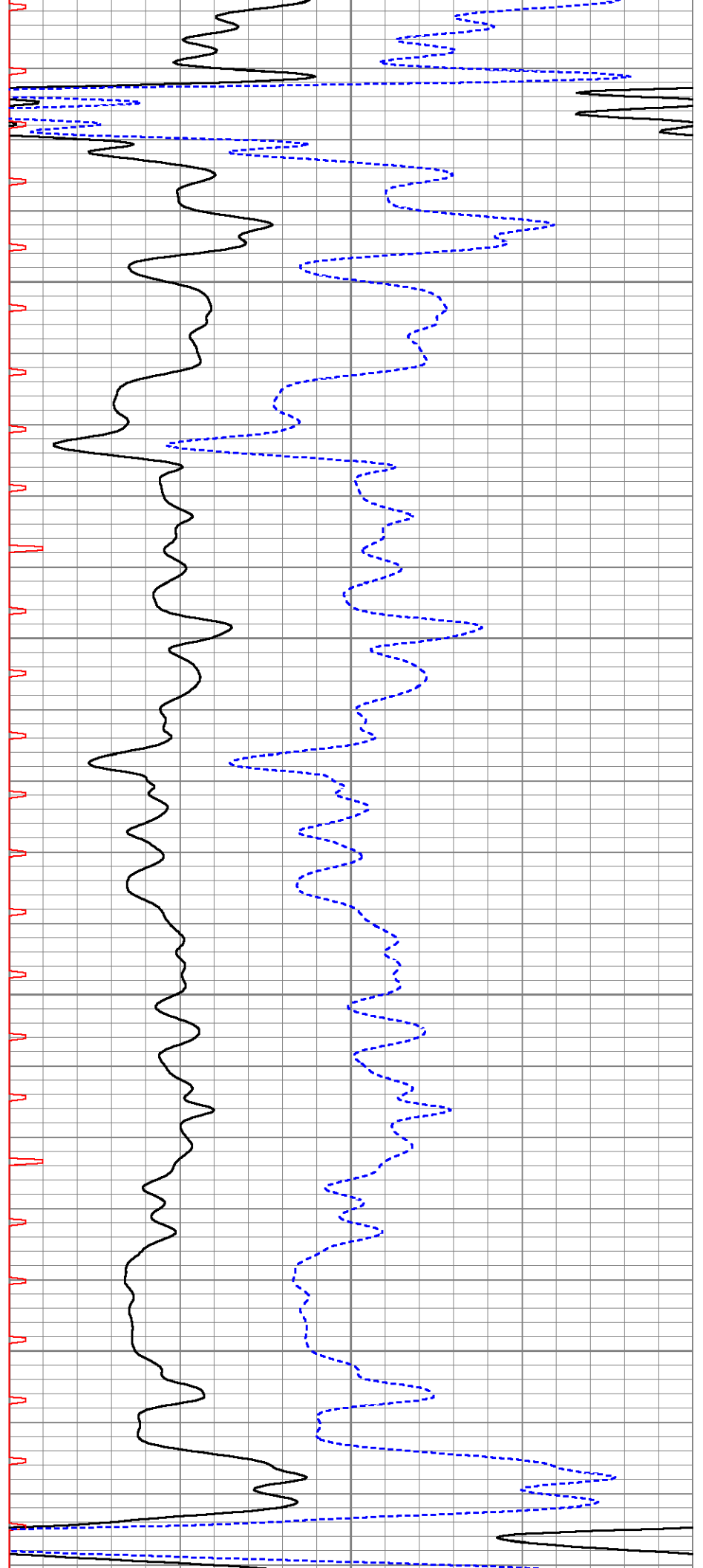


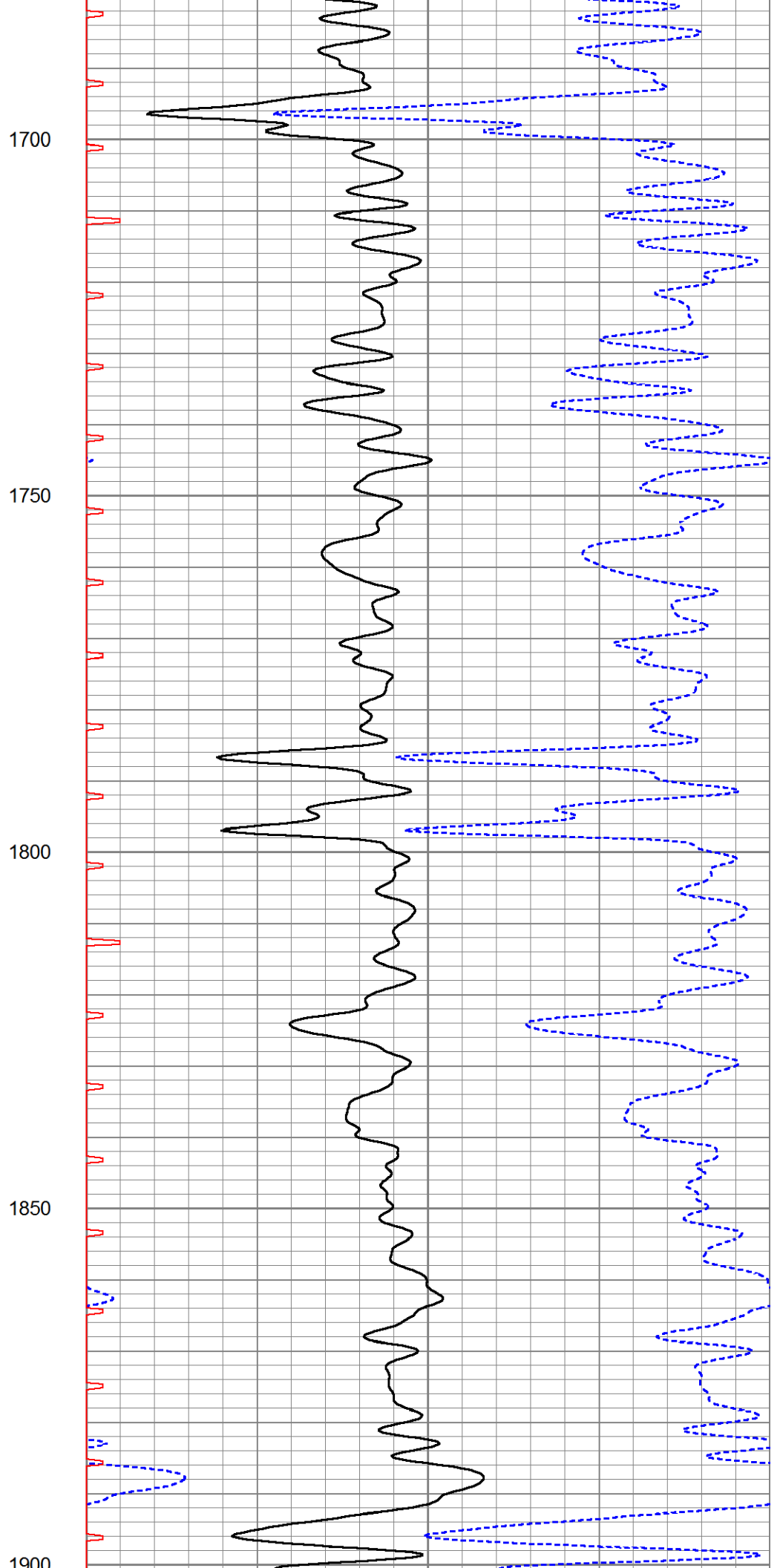
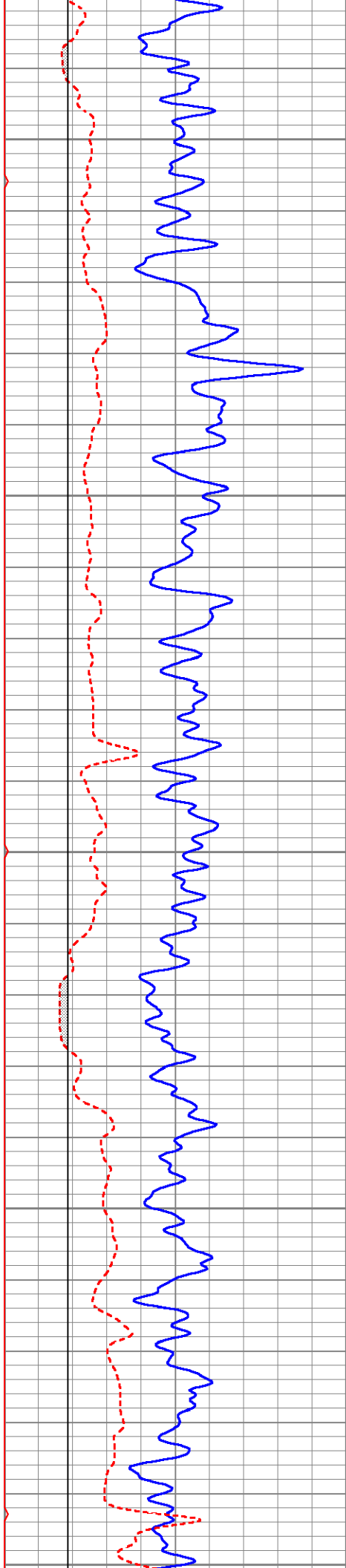
1500

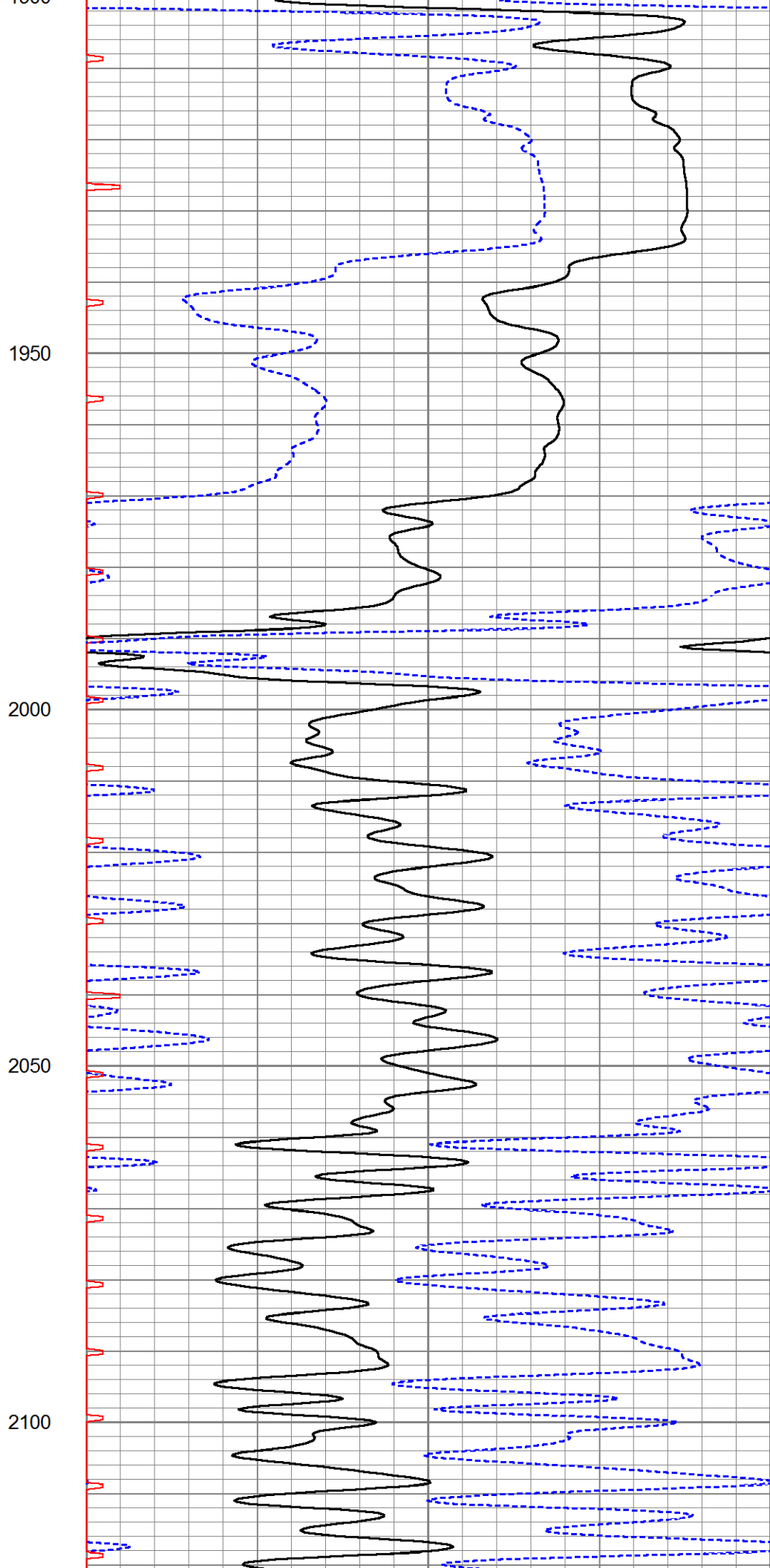
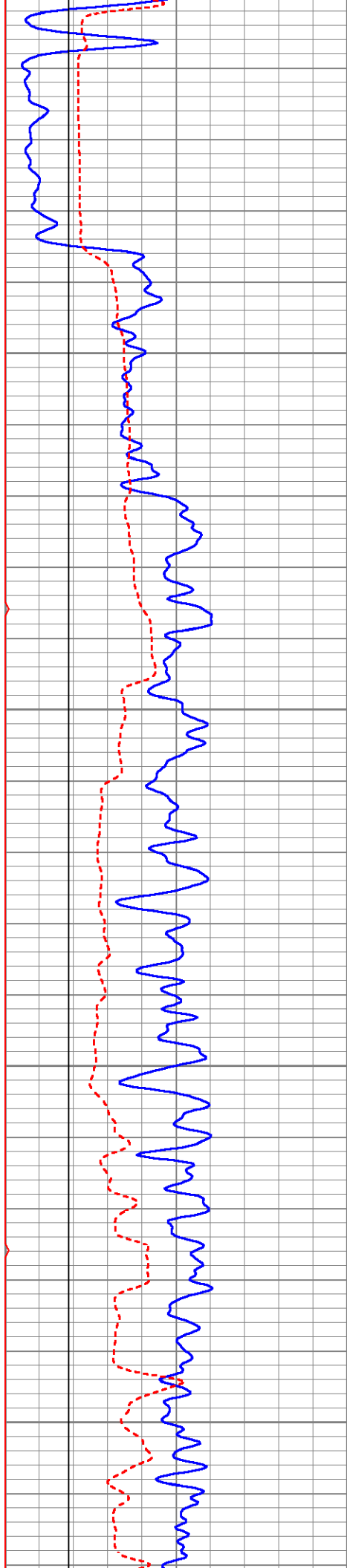
1550

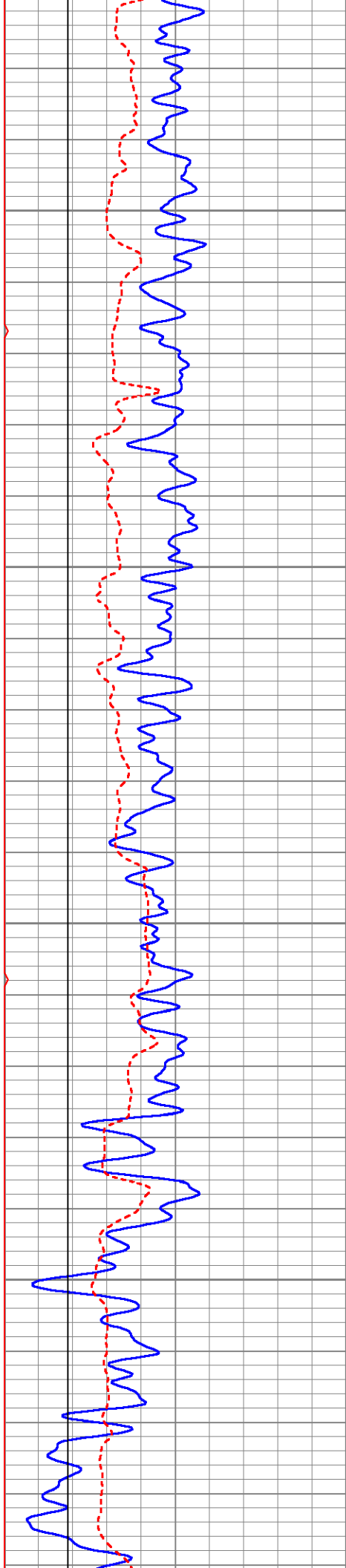
1600

1650







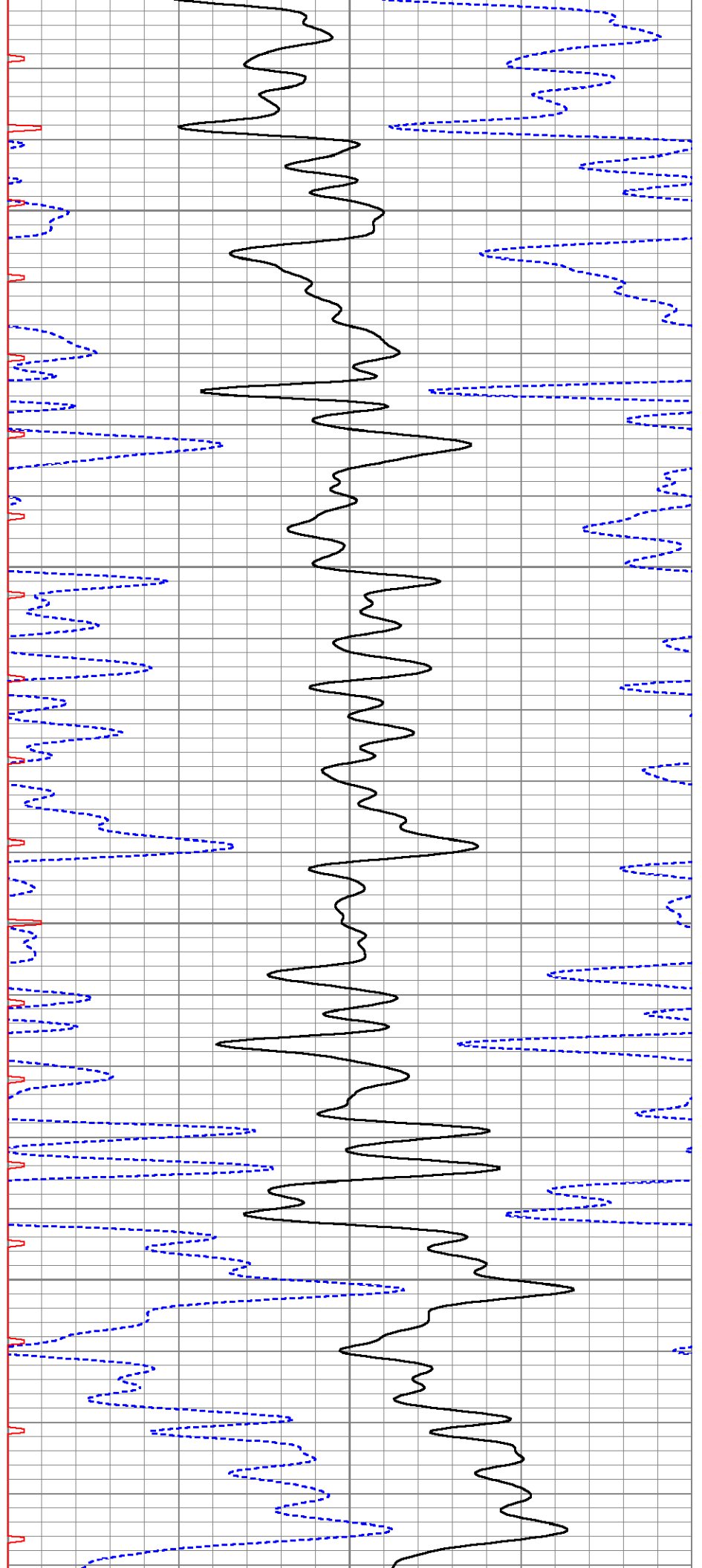


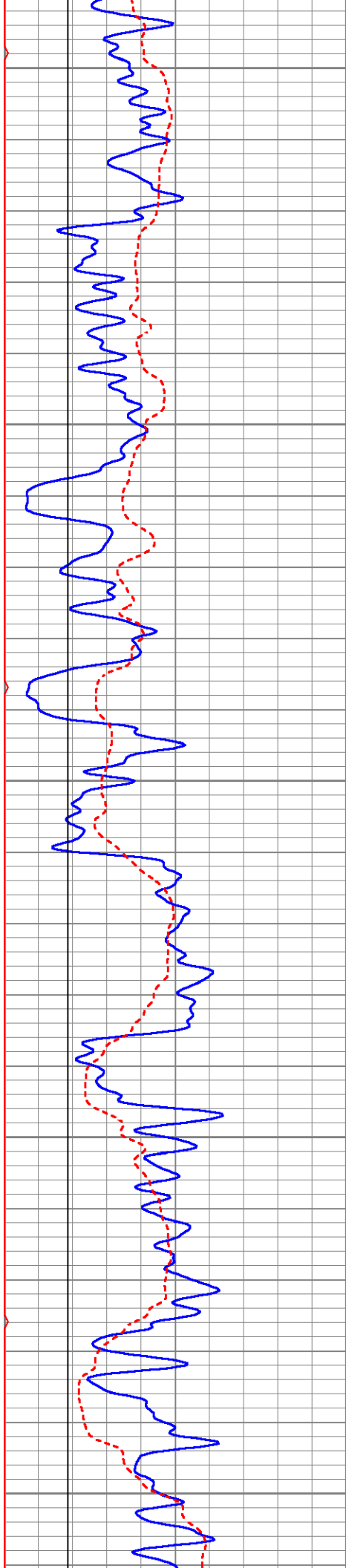
2150

2200

2250

2300





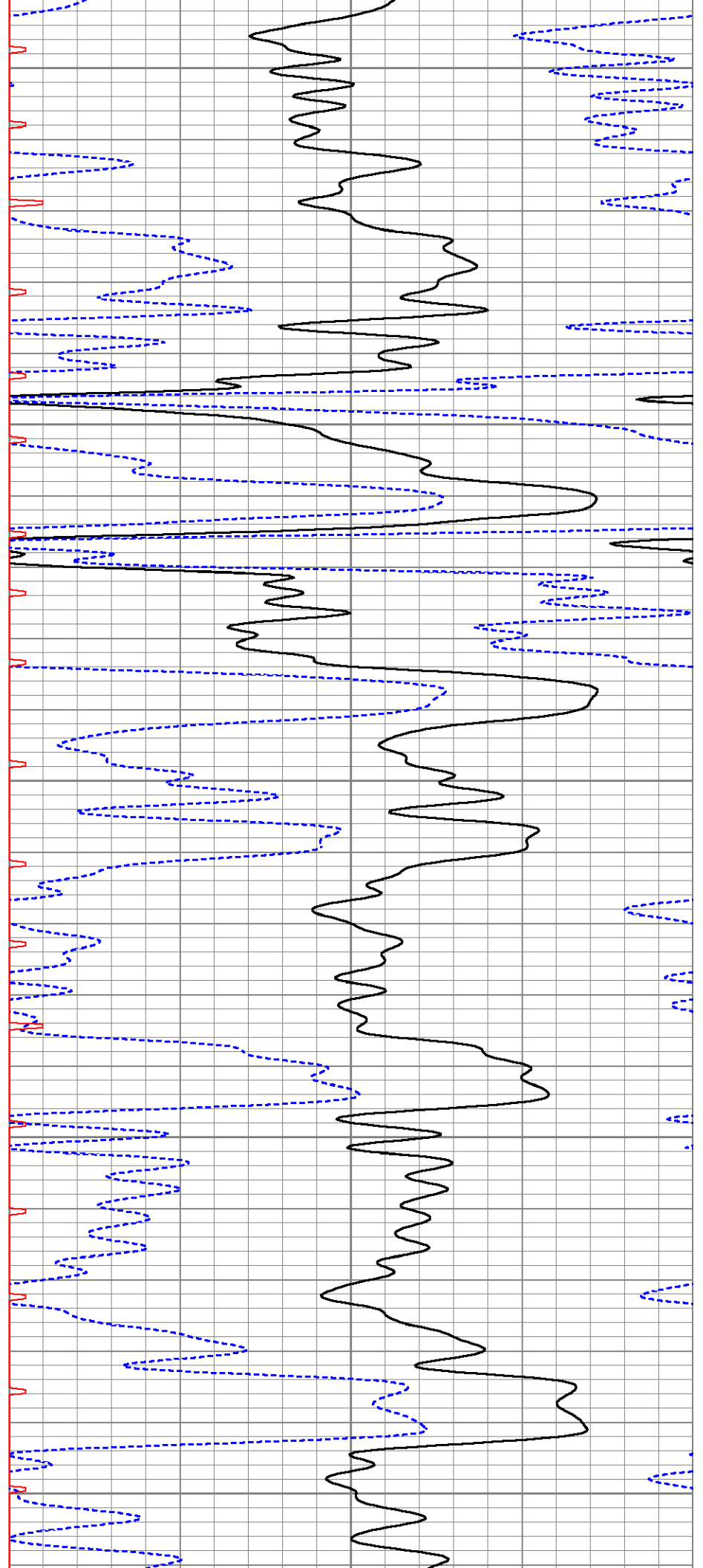
2350

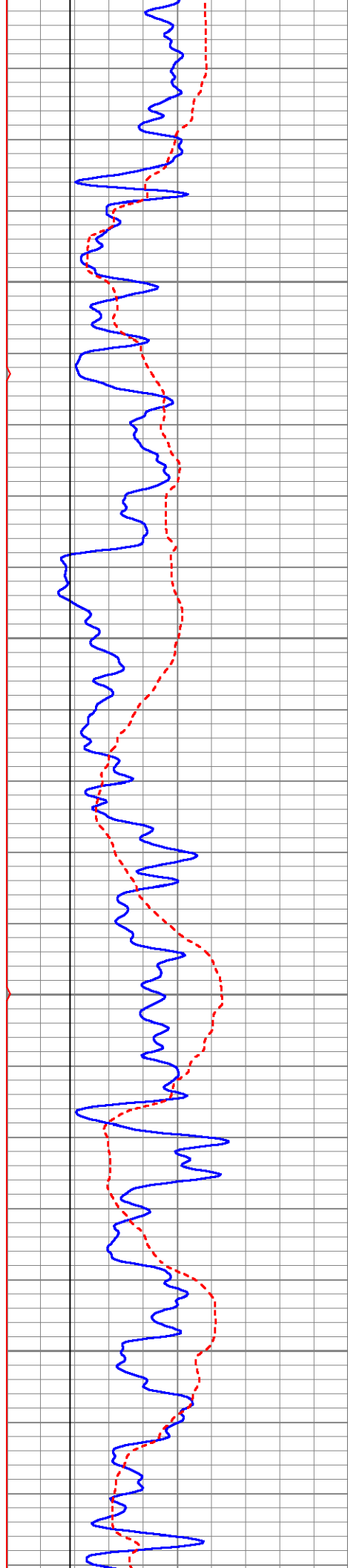
2400

2450

2500

2550



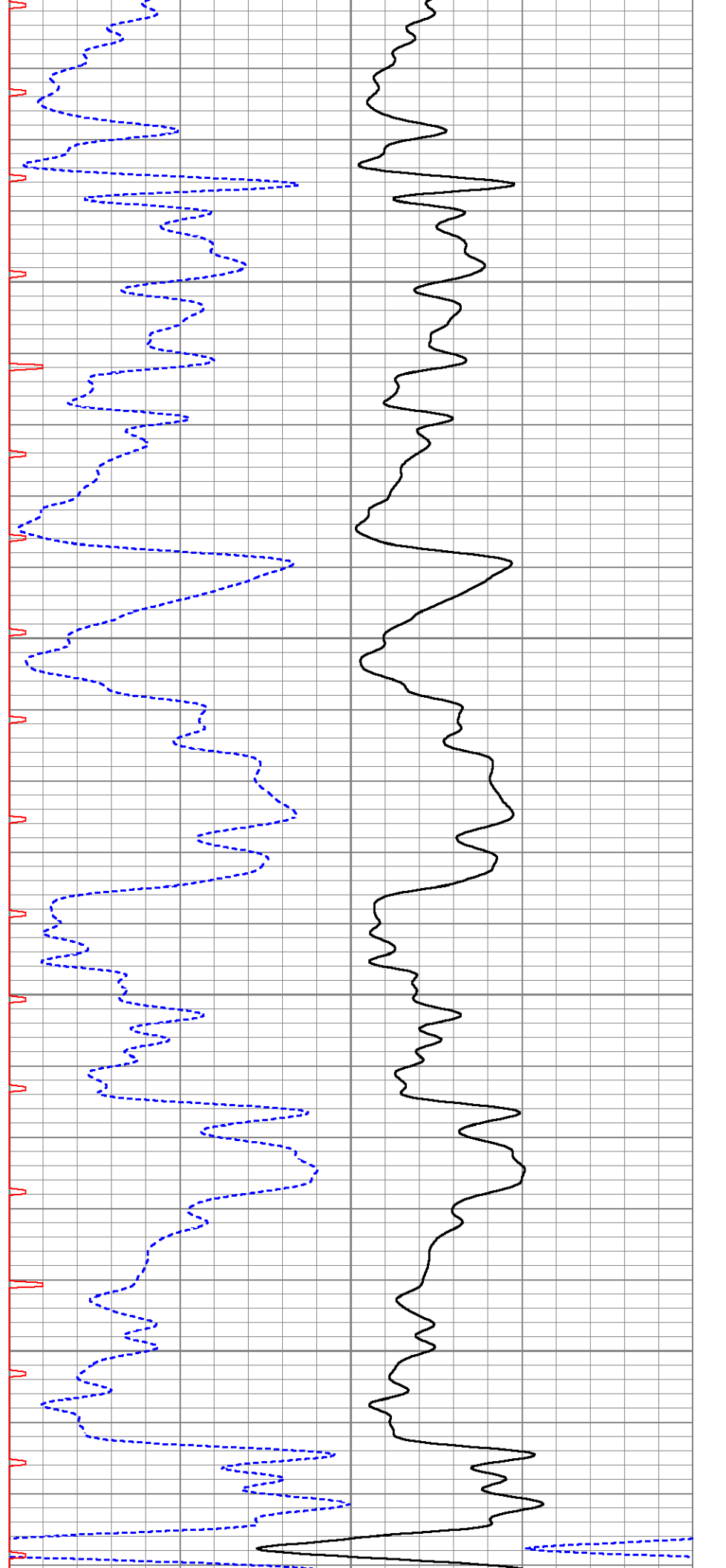


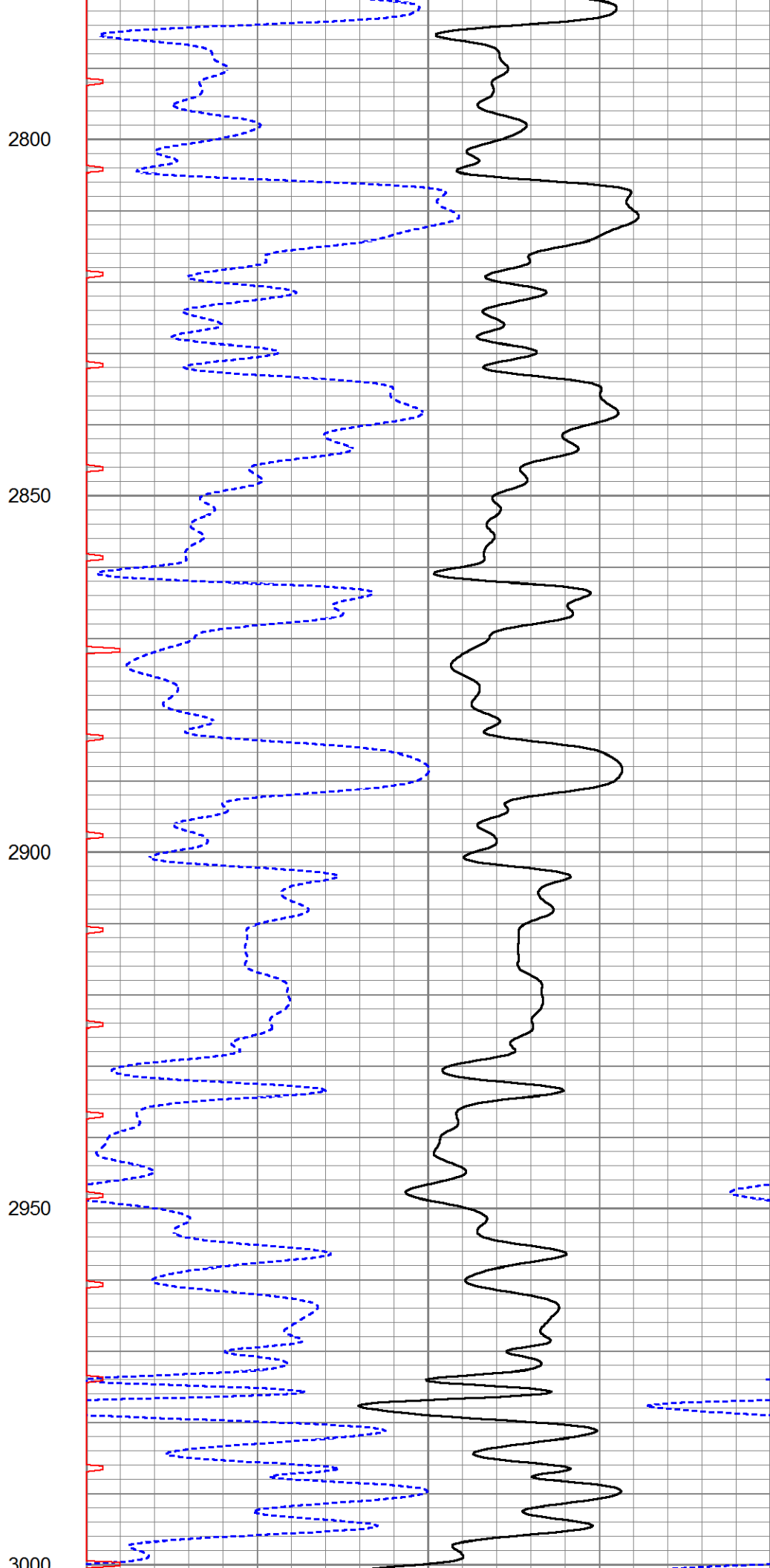
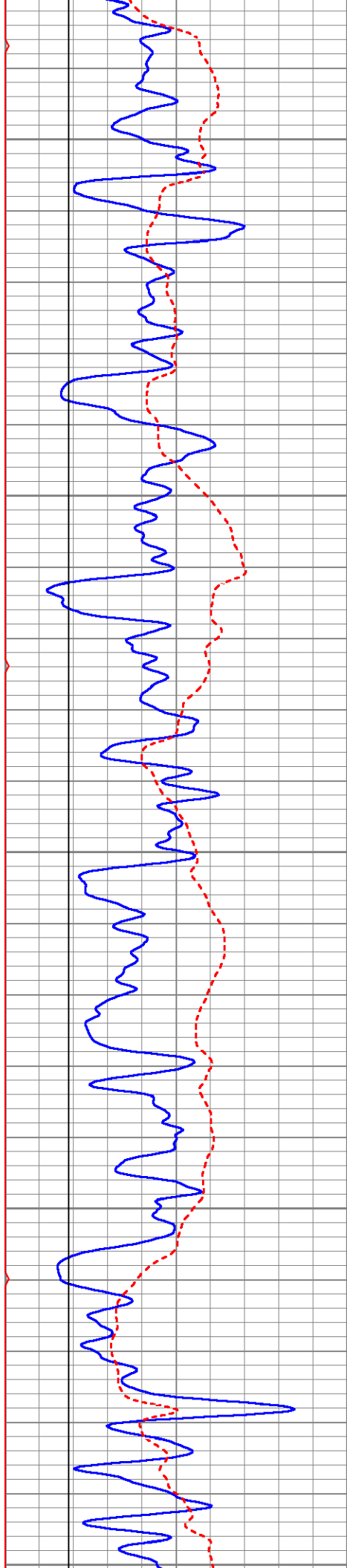
2600

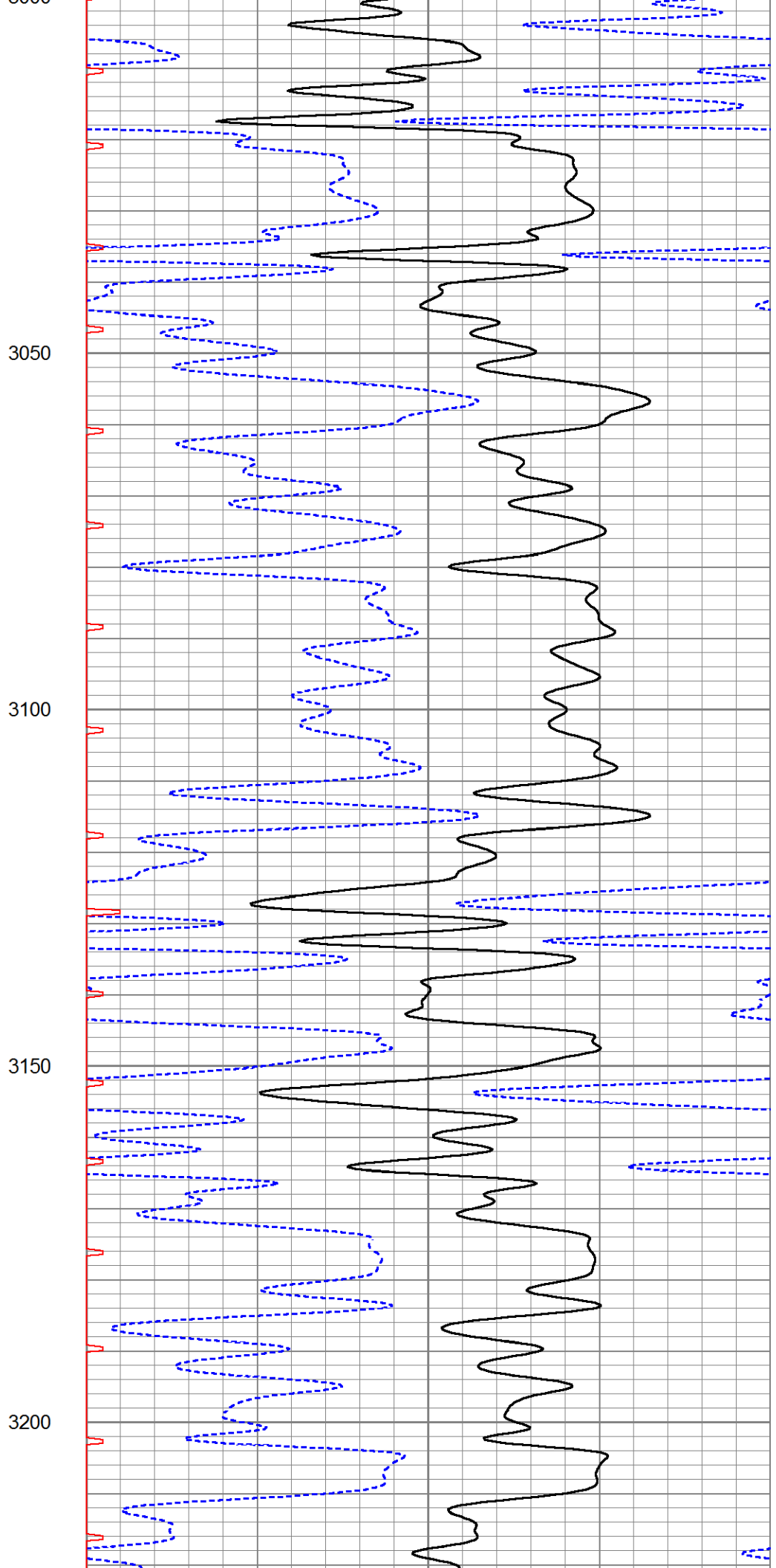
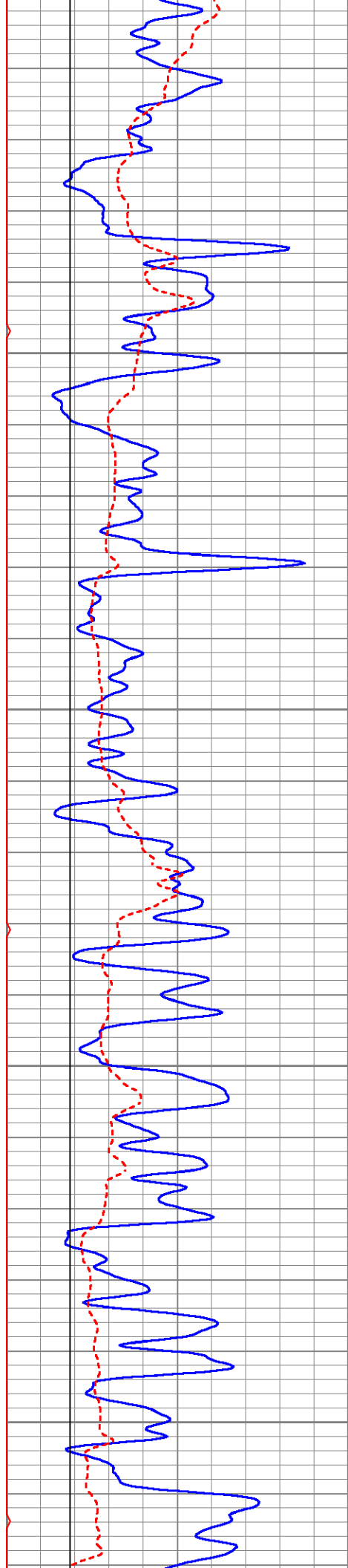
2650

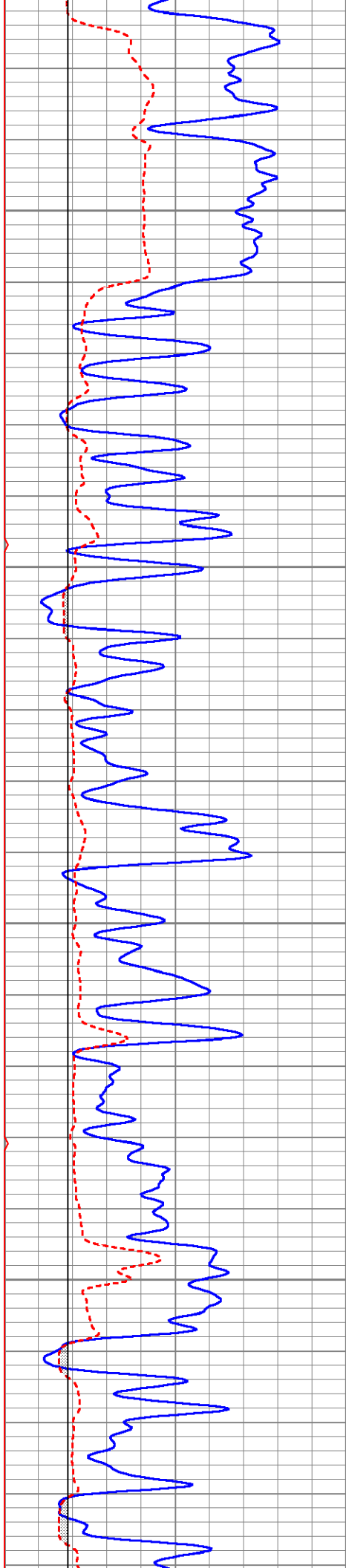
2700

2750







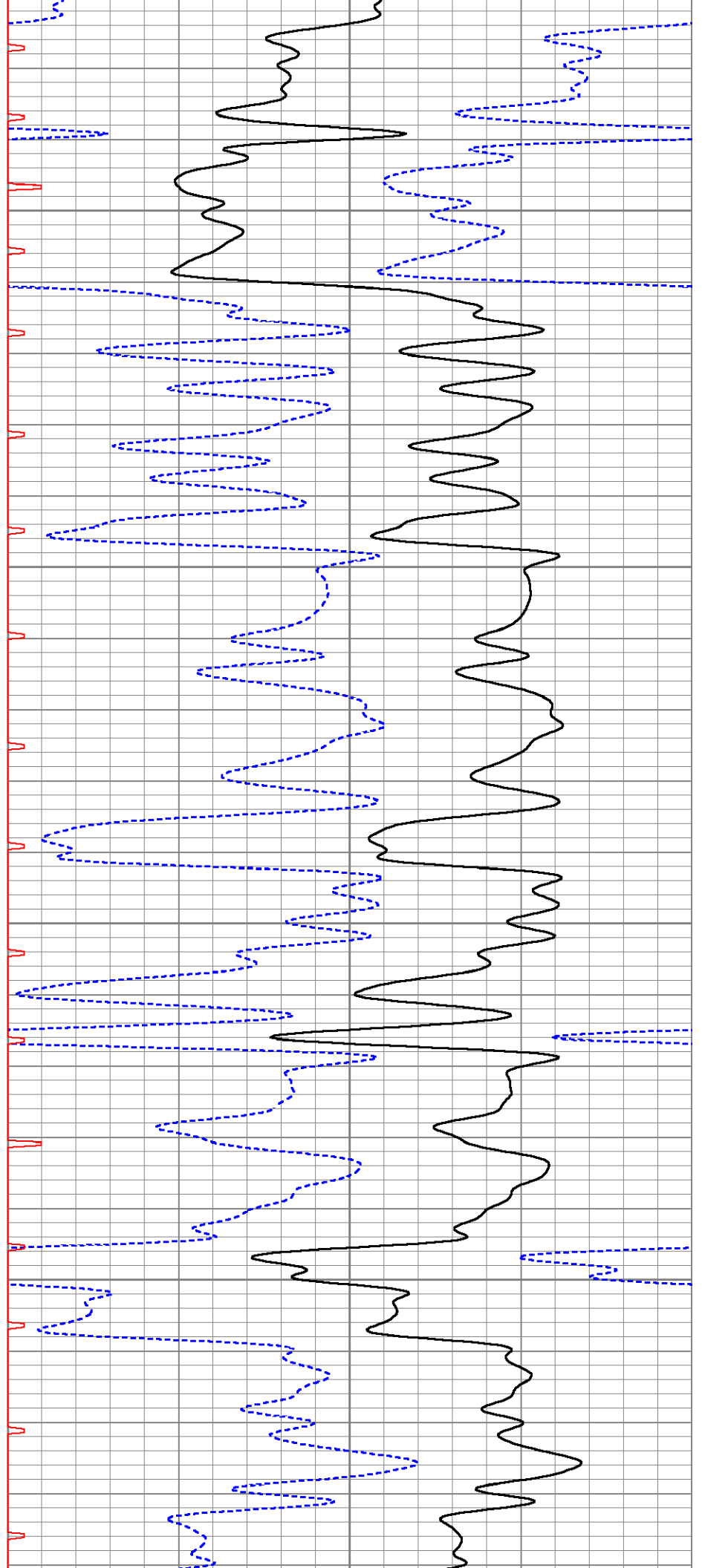


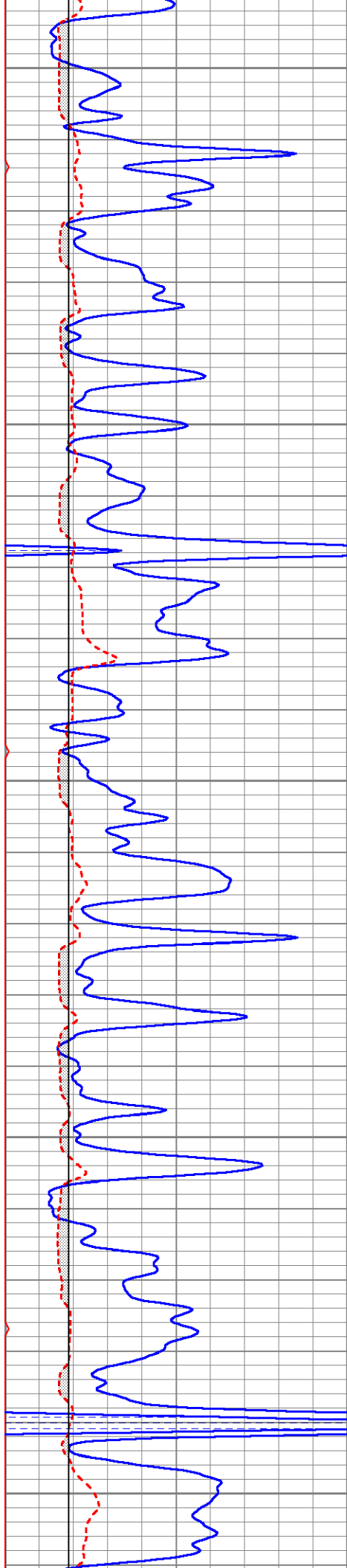
3250

3300

3350

3400





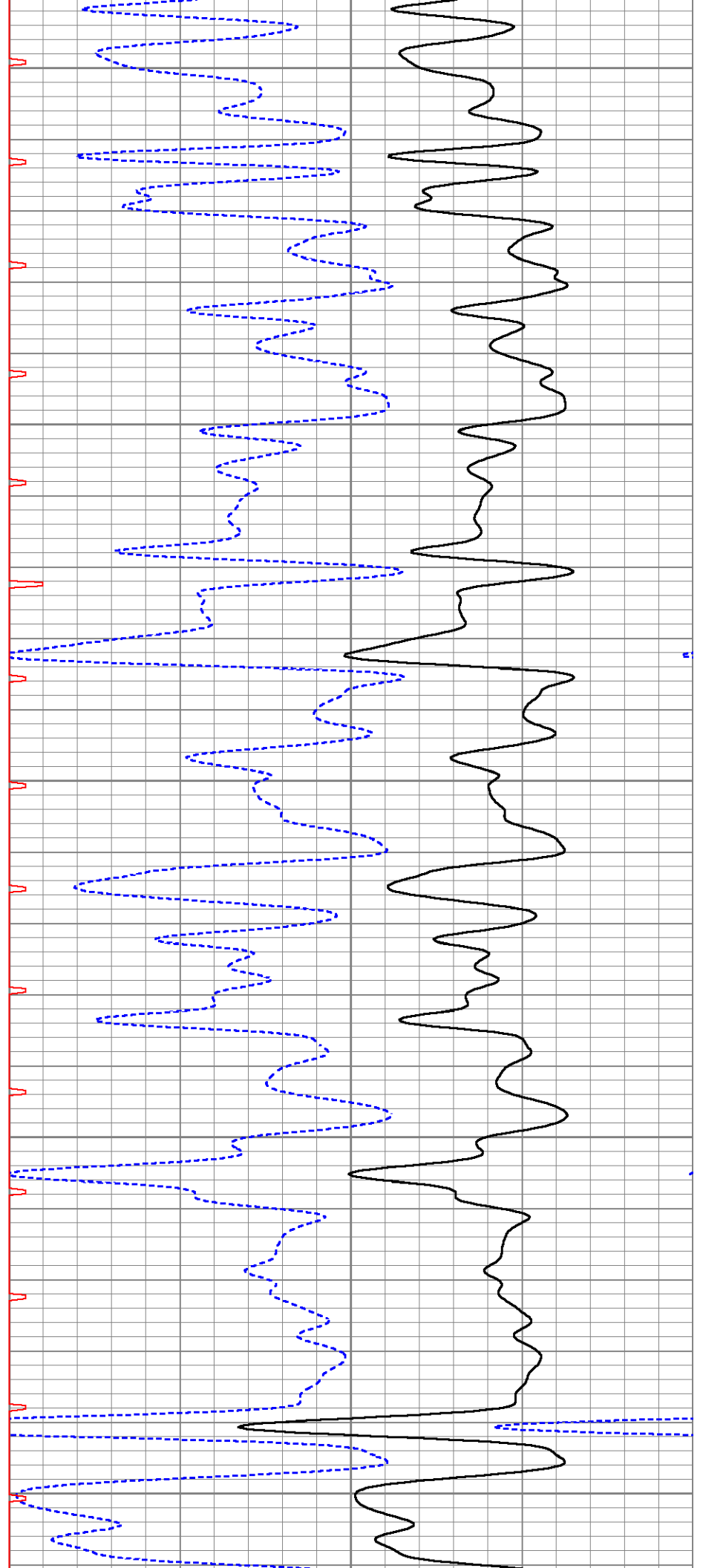
3450

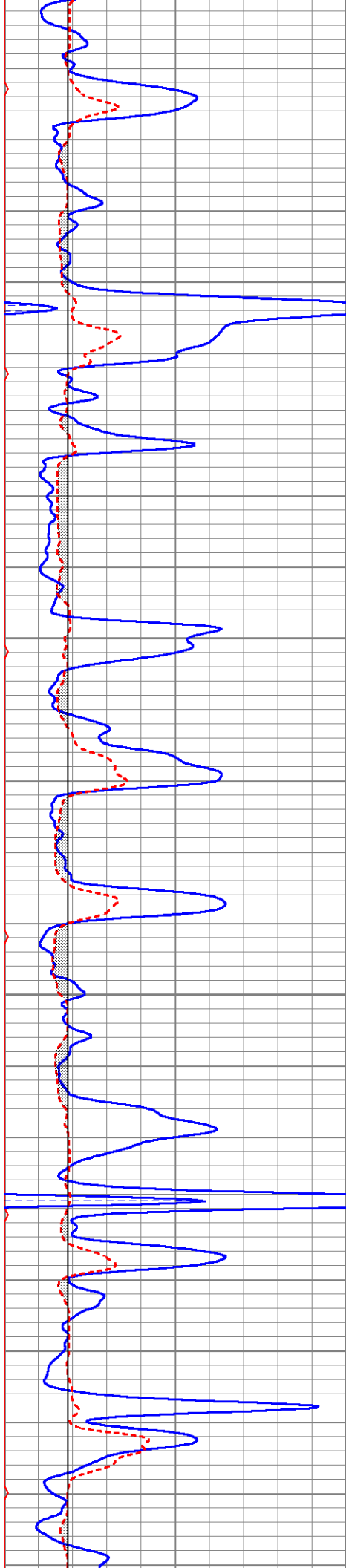
3500

3550

3600

3650



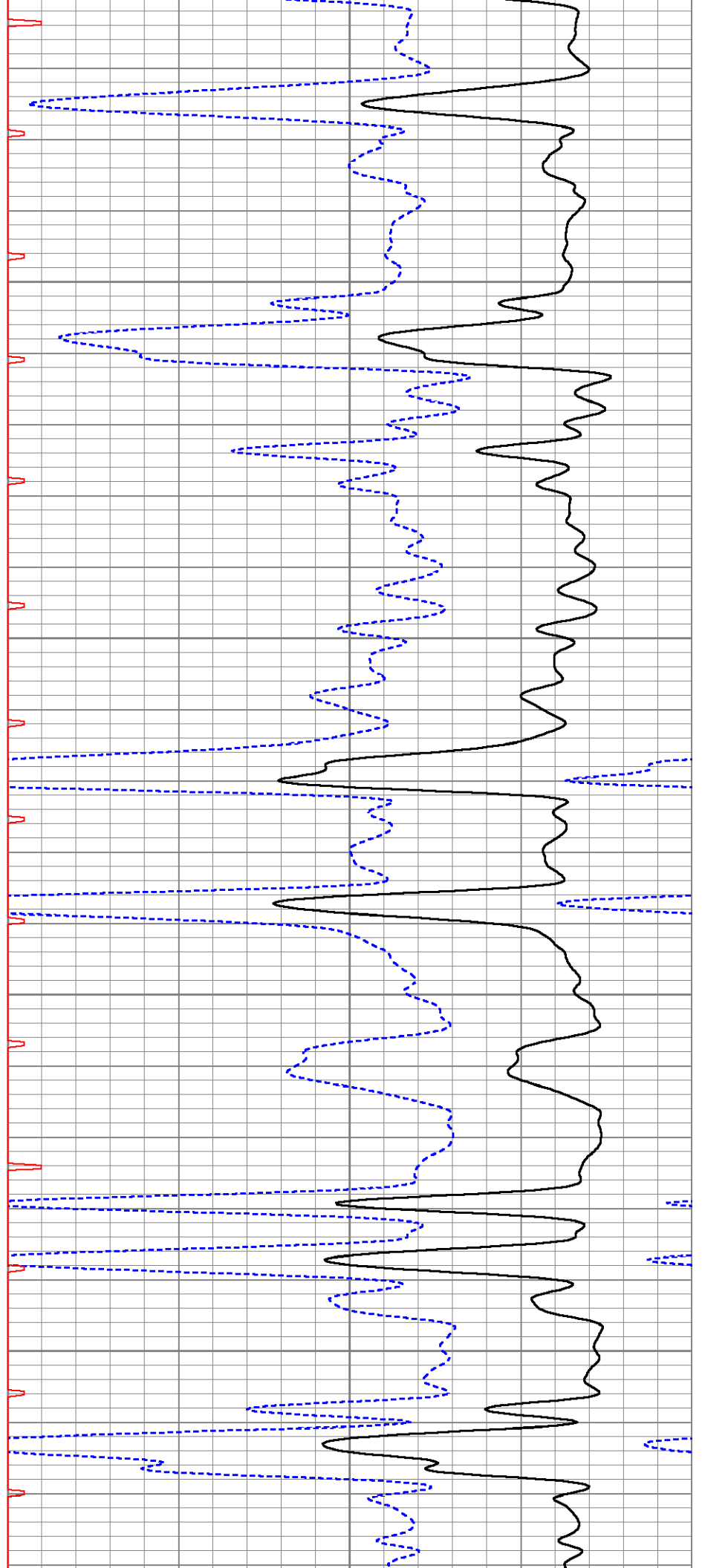


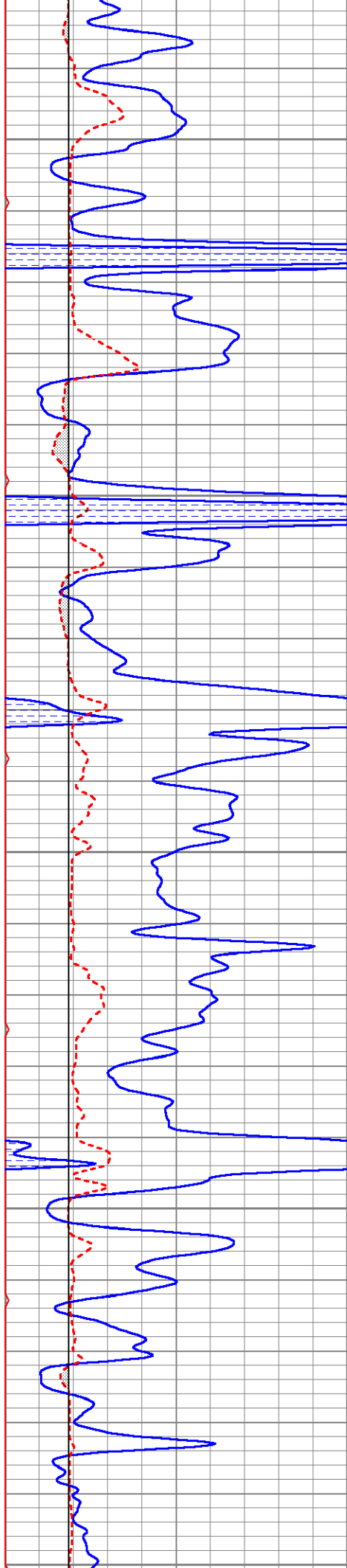
3700

3750

3800

3850





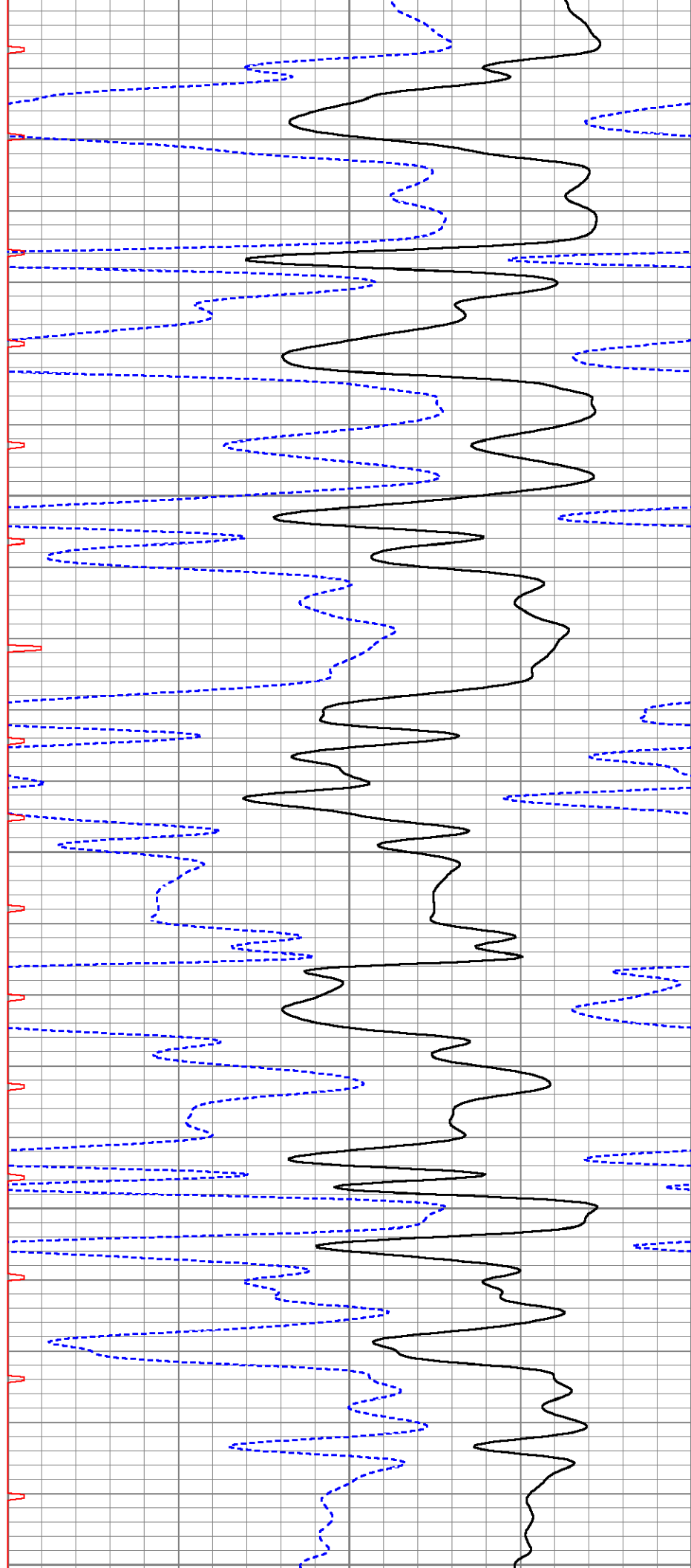
3900

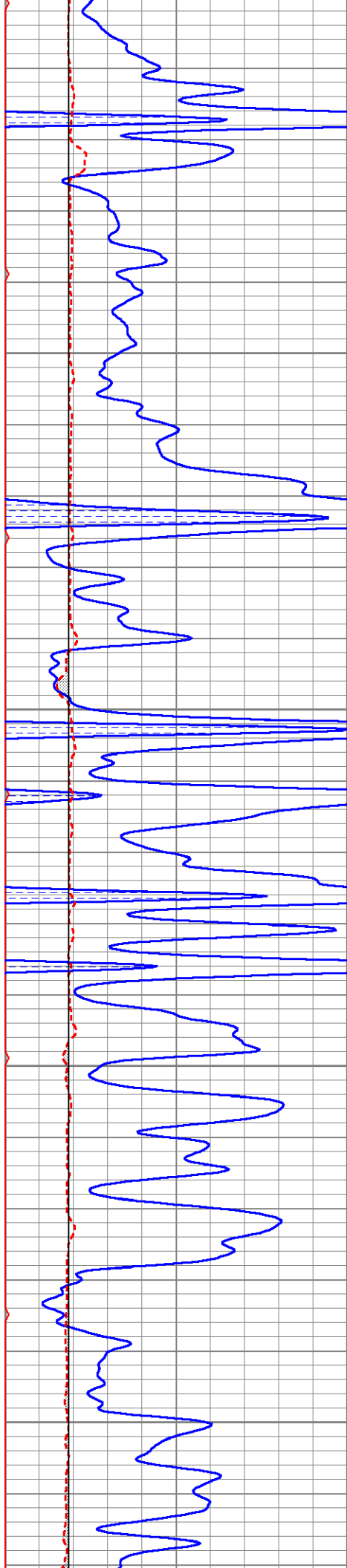
3950

4000

4050

4100





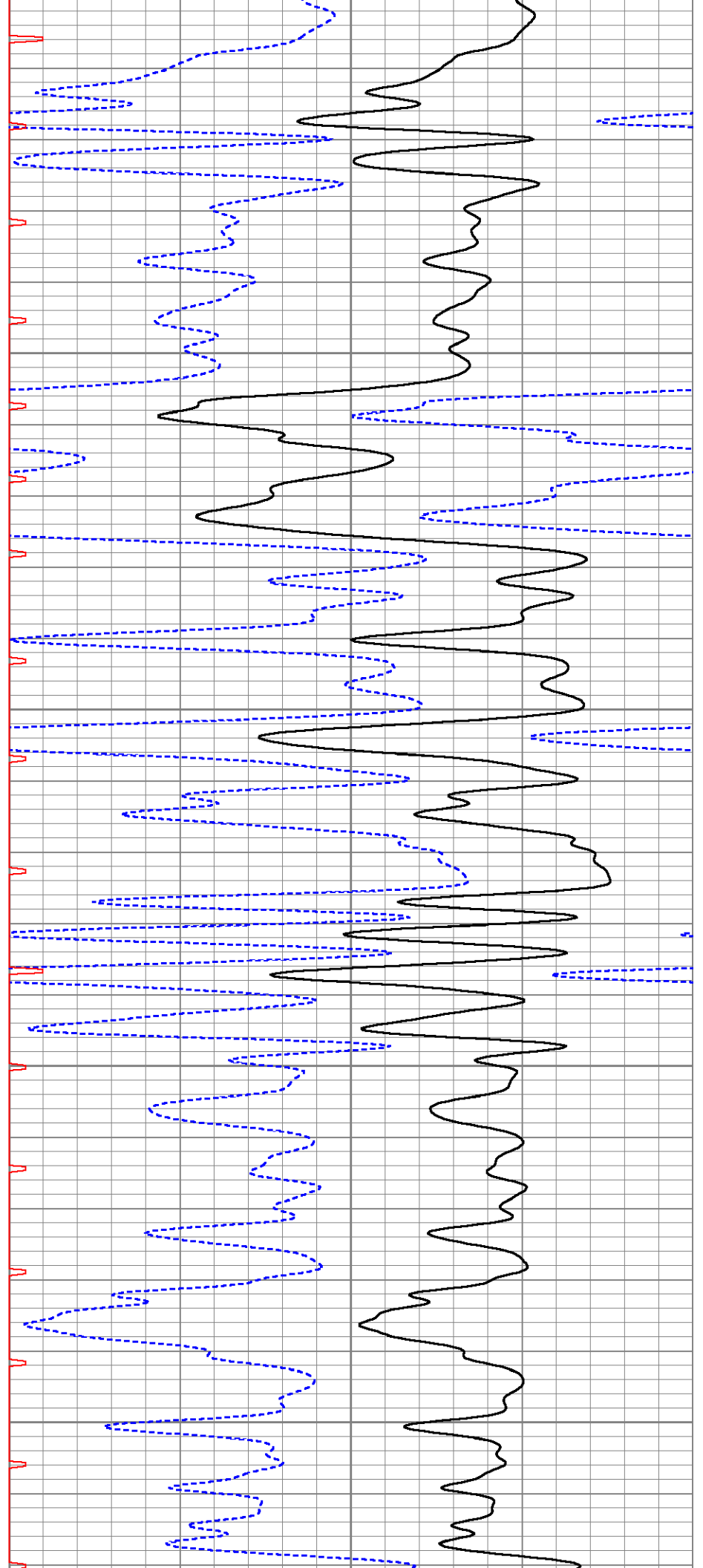
4100

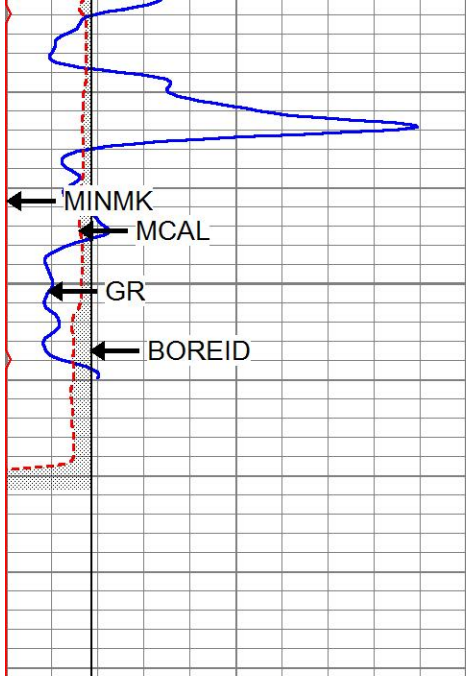
4150

4200

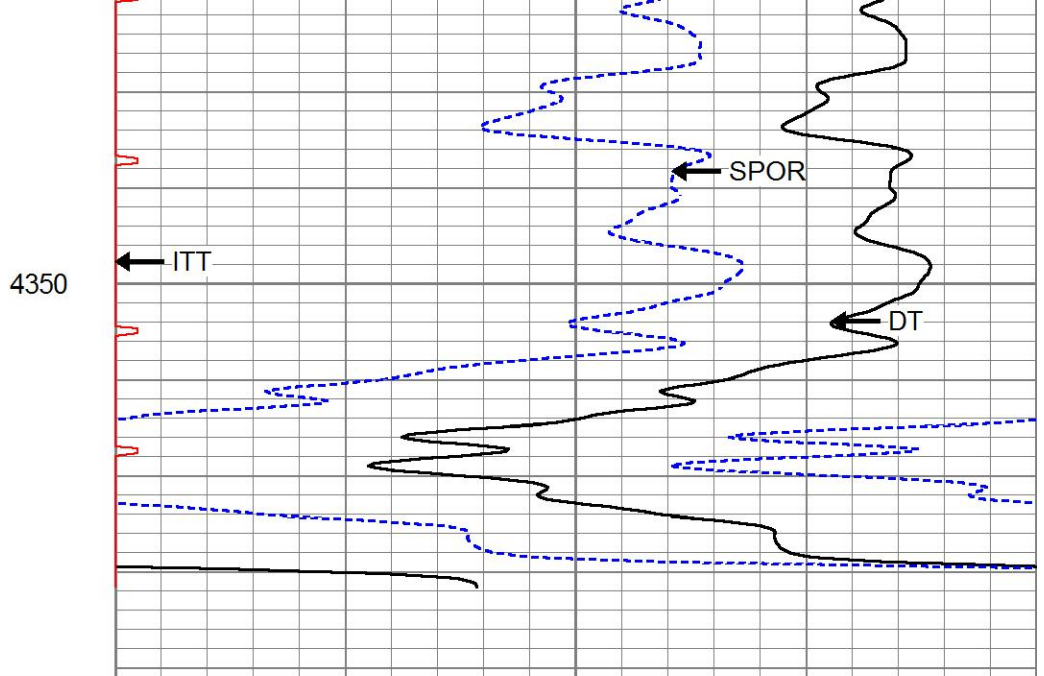
4250

4300





0	GR (GAPI)	150
6	MCAL (in)	16
6	BOREID (in)	16



140	DT (usec/ft)	40
30	SPOR (pu)	-10
0	ITT (msec)	20

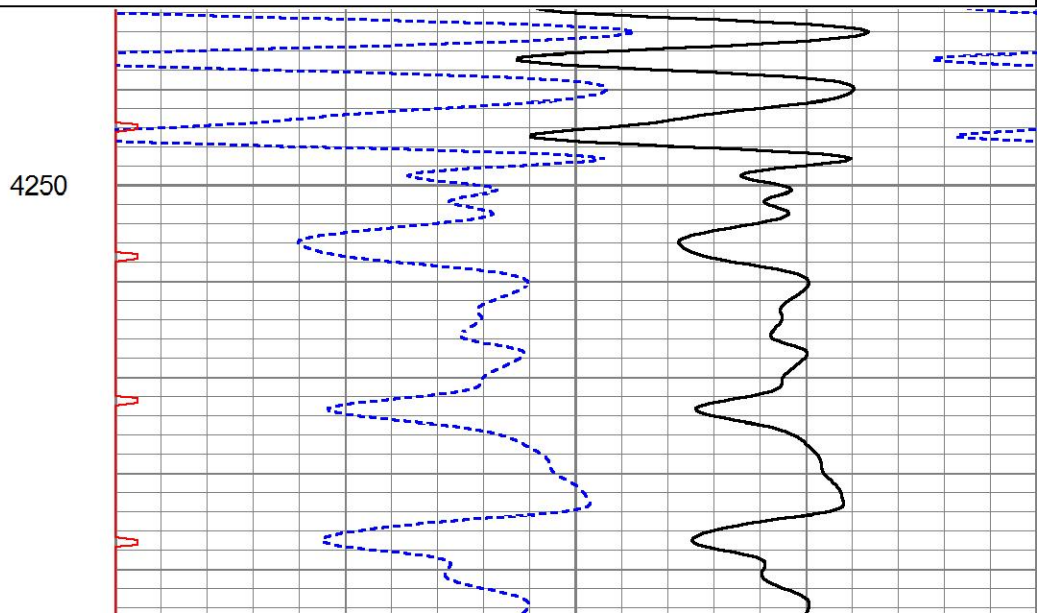
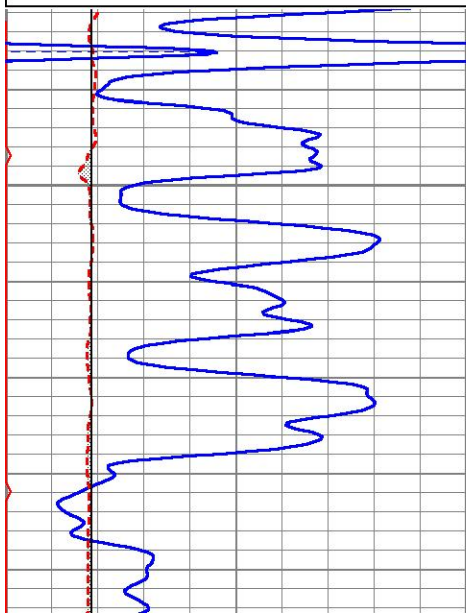


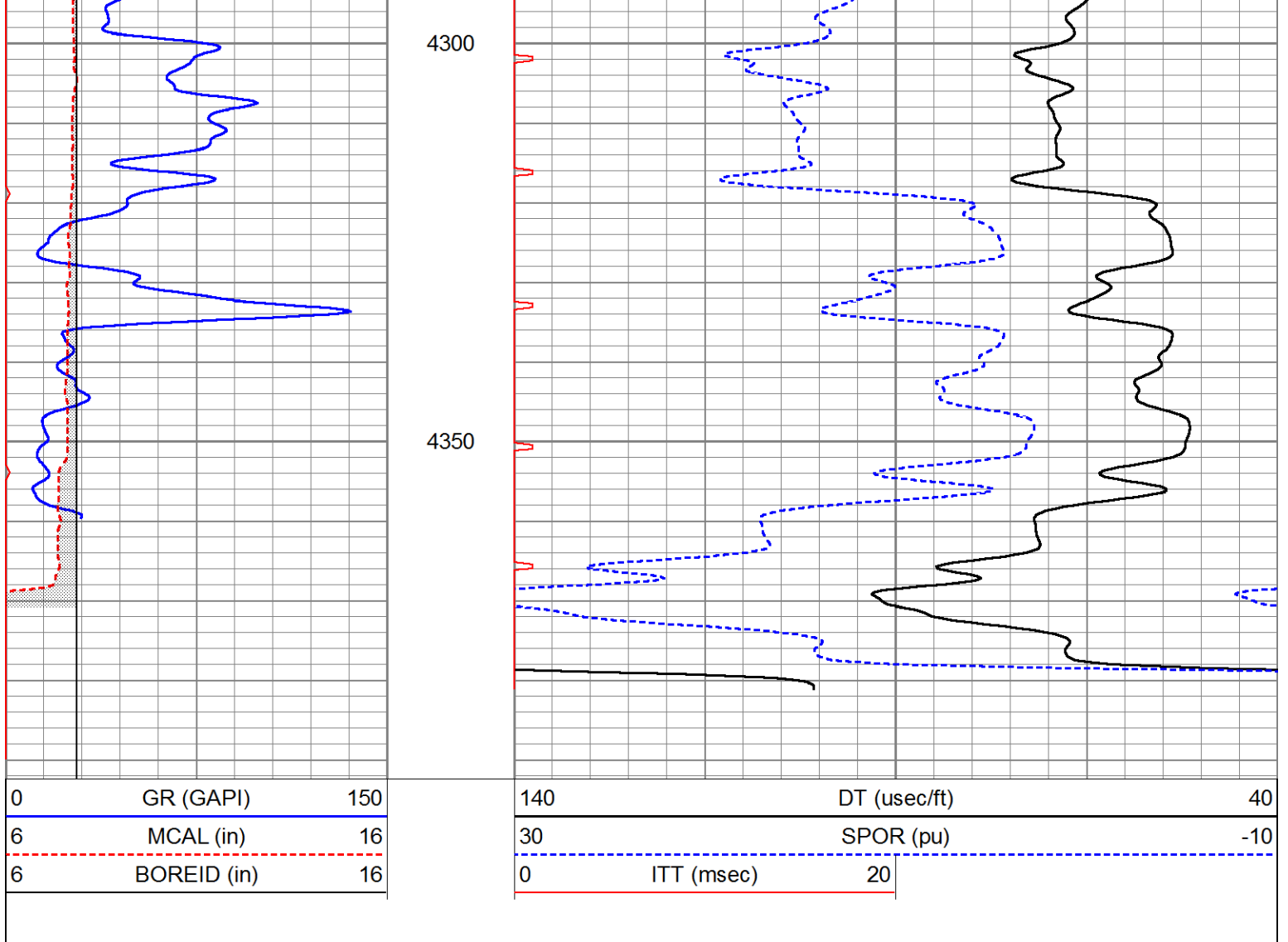
Repeat Pass

Database File ppmmaximumattitude#1oh.db
 Dataset Pathname pass4
 Presentation Format kbcs
 Dataset Creation Mon Jun 17 21:04:00 2013
 Charted by Depth in Feet scaled 1:240

0	GR (GAPI)	150
6	MCAL (in)	16
6	BOREID (in)	16

140	DT (usec/ft)	40
30	SPOR (pu)	-10
0	ITT (msec)	20





Calibration Report

Database File ppmaximumattitude#1oh.db
 Dataset Pathname pass4
 Dataset Creation Mon Jun 17 21:04:00 2013

Microlog Calibration Report

Serial-Model: 012-Pengo
 Performed: Tue Feb 19 03:37:49 2013

	Readings			References			Results	
	Zero	Cal		Zero	Cal		m	b
Normal	0.0254	0.4358	V	0.0000	12.0000	Ohm-m	29.2405	-0.7423
Inverse	0.0063	0.5619	V	0.0000	8.5000	Ohm-m	15.2987	-0.0967
Caliper	3.2460	6.8378	V	8.3000	15.0000	in	1.8653	2.2452

Gamma Ray Calibration Report

Serial Number: 2000
 Tool Model: P2000
 Performed: Fri Mar 15 09:10:59 2013

Calibrator Value: 1.0 GAPI

Background Reading: 0.0 cps
 Calibrator Reading: 1.0 cps

Sensor	Offset (ft)	Schematic	Description	Length (ft)	O.D. (in)	Weight (lb)	
GR	28.59		GR-P2000 (2000)	3.67	3.25	40.00	
MCAL	21.51		ML-Pengo (012)	6.97	3.50	100.00	
MI	21.51						
MN	21.51						
WVF4	14.25		SLT-G (101127) Sonic	15.71	3.50	250.00	
WVF3	13.25						
WVF2	10.25						
WVF1	9.25		OHlong Open Hole long Centralizer	4.50	3.50	50.00	
		Dataset:	ppmaximumattitude#1oh.db: field/well/run1/pass4				
		Total length:	30.84 ft				
		Total weight:	440.00 lb				
		O.D.:	3.50 in				