

**MIDWEST SURVEYS**  
 LOGGING - PERFORATING - CONSULTING SERVICES  
 P.O. Box 68, Osawatomie, KS 66064  
 913 / 755 - 2128

**GAMMA RAY / NEUTRON / CCL**

File No. Company TDR Construction, Inc.  
 Well Hoehn No.- 26  
 Field Paola - Rantoul  
 County Franklin State Kansas

Location 2805' FSL & 4390' FEL  
 SW-SE-SW-NW  
 Sec. 5 Permian Deam Log Measured From Drilling Measured From  
 Typ 10s Rge 21e Elevation N/A  
 K.B. NA D.F. NA G.L. NA

Date 07-12-2013  
 Run Number One  
 Depth Drier 780.0  
 Depth Logger 723.2  
 Bottom Logged Interval 722.2  
 Top Log Interval 20.0  
 Fluid Level Full

Type Fluid Water  
 Density / Viscosity NA  
 Salinity - PPM Cl NA  
 Max Recorded Temp NA  
 Estimated Cement Top 0.0  
 Equipment No. Location 107 Osawatomi  
 Recorded By Steve Wandisch  
 Witnessed By Lance Town

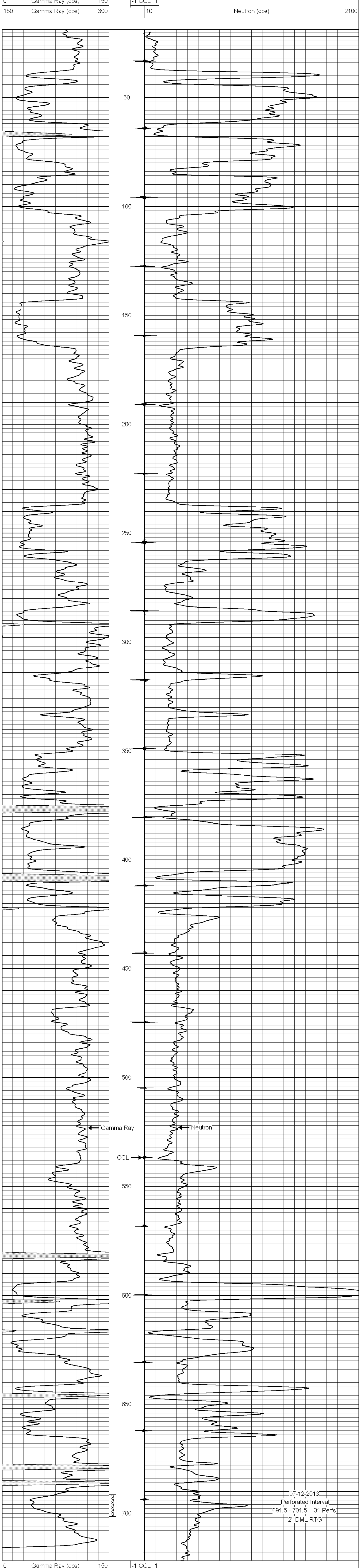
BORE-HOLE RECORD				CASING RECORD			
RUN No.	BIT FROM	TO	SIZE	WGT.	FROM	TO	
One	9.875"	21.0	6.75"	15.0#	0.0	21.0	
Two	5.625"	21.0	2.875"	6.5#	0.0	755.7	
			Baffle	Set	At	724.8	

<<< Fold Here >>>  
 All interpretations are opinions based on inferences from electrical or other measurements and we cannot and do not guarantee the accuracy or correctness of any interpretation, and we shall not, except in the case of gross or willful negligence on our part, be liable or responsible for any loss, costs, damages, or expenses incurred or sustained by anyone resulting from any interpretation made by any of our officers, agents or employees. These interpretations are also subject to our general terms and conditions set out in our current Price Schedule.

Comments

Drilling Contractor :  
 Town Oilfield Services, Inc.

Database File: hoehn26.db  
 Dataset Pathname: pass1  
 Presentation Format: gr-n-ccl  
 Dataset Creation: Fri Jul 12 13:46:46 2013 by Log SCH 111116  
 Charted by: Depth in Feet scaled 1:240



07-12-2013  
 Perforated Interval  
 691.5 - 701.5 31 Perfs  
 2" DML RTG