



**GAMMA RAY
CEMENT BOND
COMPLETION LOG**

**POSTROCK ENERGY CORP.
OLSON, RANDALL G. #11-2
CHEROKEE BASIN CBM**

Company POSTROCK ENERGY CORP.
Well OLSON, RANDALL G. #11-2
Field CHEROKEE BASIN CBM
County WILSON
State KANSAS

Location: APR # 620' FWL & 180' FWL
620' FWL & 180' FWL
SW NW NW NW
SEC 11 TWP 28S RGE 16E
Elevation 1052'
Elevation 1052'

Date 4-10-2013
Log Measured From GL
Log Measured To GL
Run Number 1 NW
Depth (ft) 1225'
Depth (m) 1225'

Top Log Interval 0
Bottom Logged Interval 1218.3'
Fluid Level FULL
Type Fluid WATER
Production Casing 5.5" @ 10"
Max. Recorded Temp. @
Estimated Cement Top @
Amount & Type Cement @
Drilling Contractor 105
Equipment Number
Location GORMLEY R
Measured By HANSEN

Company POSTROCK ENERGY CORP.
Well OLSON, RANDALL G. #11-2
Field CHEROKEE BASIN CBM
County WILSON
State KANSAS
Location: APR # 620' FWL & 180' FWL
620' FWL & 180' FWL
SW NW NW NW
SEC 11 TWP 28S RGE 16E
Elevation 1052'
Elevation 1052'
Date 4-10-2013
Log Measured From GL
Log Measured To GL
Run Number 1 NW
Depth (ft) 1225'
Depth (m) 1225'
Top Log Interval 0
Bottom Logged Interval 1218.3'
Fluid Level FULL
Type Fluid WATER
Production Casing 5.5" @ 10"
Max. Recorded Temp. @
Estimated Cement Top @
Amount & Type Cement @
Drilling Contractor 105
Equipment Number
Location GORMLEY R
Measured By HANSEN

<<< Fold Here >>>
All interpretations are opinions based on inferences from electrical or other measurements and we cannot and do not guarantee the accuracy or correctness of any interpretation, and we shall not, except in the case of gross or willful negligence on our part, be liable or responsible for any loss, costs, damages, or expenses incurred or sustained by anyone resulting from any interpretation made by any of our officers, agents or employees. These interpretations are also subject to our general terms and conditions set out in our current Price Schedule.

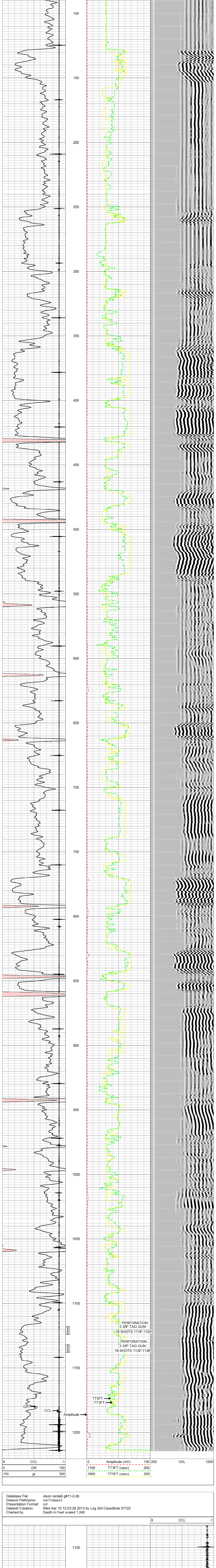
Comments
THANK YOU

Sensor	Offset (ft)	Schematic	Description	Len (ft)	OD (in)	Wt (lb)
			tekco tekco cent.	2.17	1.69	5.00
WVF3FT	6.58		CBLTEKCO-TEKCO2RCVR (TEKCO169) 1 11/16" TEKCO 2 RCVR DELWARE	9.75	1.69	50.00
WVF5FT	5.58					
WVFCAL	2.17					
WVFSYNC	2.17		tekco tekco cent.	2.17	1.69	5.00

Dataset: olson randall g#11-2.db; field/well/run1/pass2MERGE
Total Length: 14.08 ft
Total Weight: 60.00 lb
O.D.: 1.69 in

Database File: olson randall g#11-2.db
Dataset Pathname: pass2MERGE
Presentation Format: scl
Dataset Creation: Wed Apr 10 11:34:50 2013
Charted by:

9	CCL	-1	0	Amplitude (mV)	150	250	VDL	1200
0	GR	150	1100	TT3FT (usec)	200			
150	gr	300	1800	TT5FT (usec)	200			



Database File: olson randall g#11-2.db
Dataset Pathname: run11/pass3
Presentation Format: ccl
Dataset Creation: Wed Apr 10 12:03:28 2013 by Log Std Casehold 07122
Charted by:

9	CCL	-1	1100					
				NEW PERFS	→			
				NEW PERFS	→			
9	CCL	-1	1150					



Company POSTROCK ENERGY CORP.
Well OLSON, RANDALL G. #11-2
Field CHEROKEE BASIN CBM
County WILSON SECTION 11 TWP 28S RGE 16E
State KANSAS
Date 4-10-2013