



MIDWEST SURVEYS
 LOGGING - PERFORATING - CONSULTING SERVICES
 P.O. Box 68, Osawatomie, KS 68064
 913.735.2128

GAMMA RAY / NEUTRON / CCL

File No.

Company **HB Energy, LLC**

Well **Fasolino No. HB-11**

Field **Prairie Center**

County **Johnson** State **Kansas**

Location **975' FSL & 3050' FEL
SW-NE-SE-SW**

Other Services **Perforate**

Sec. 4 Twp. 14S Rge. 22E

Permanent Datum **GL** Elevation **1002'**

Log Measured From **GL** KB NA

Drilling Measured From **GL** D.F. NA

Date **08-06-2013** Elevation **GL 1002'**

Run Number **One**

Depth Driller **915.0**

Bottom Logged Interval **876.5 - 875.5**

Fluid Level **20.0**

Type Fluid **Water**

Density / Viscosity **NA**

Salinity - PPM Cl **NA**

Max Recorded Temp **NA**

Estimated Cement Top **0.0**

Equipment No. **102** Location **Osawatomie**

Recorded By **Gary Windisch**

Missused By **Gary Hughes**

BORE-HOLE RECORD

RUN No.	BIT FROM	TO	SIZE	WGT	FROM	TO
One	9.875"	22.6	7.00"	17.0 #	0.0	22.8
Two	5.625"	22.6	9.15.0	2.875"	6.5 #	0.0
				Baffle	Set	At

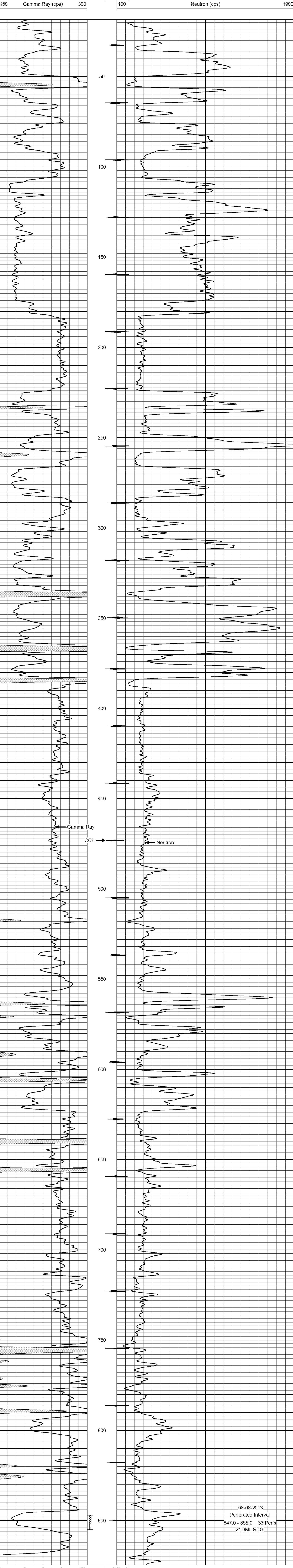
<<< Fold Here >>>

All interpretations are opinions based on inferences from electrical or other measurements and we cannot and do not guarantee the accuracy or correctness of any interpretation, and we shall not, except in the case of gross or willful negligence on our part, be liable or responsible for any loss, costs, damages, or expenses incurred or sustained by anyone resulting from any interpretation made by any of our officers, agents or employees. These interpretations are also subject to our general terms and conditions set out in our current Price Schedule.

Comments

Drilling Contractor :
 Evans Energy & Development, Inc.

Database File: fasolino11hb.db
 Dataset Pathname: pass1
 Presentation Format: gr-n-ccl
 Dataset Creation: Tue Aug 06 10:19:07 2013 by Log SCH 111116
 Charted by: Depth in Feet scaled 1:240



08-06-2013
 Perforated Interval
 847.0 - 855.0 33 Perfs
 2" DML RTG

