



Pioneer Energy Services

Dual Compensated Porosity Log

15-009-25,842-00-00

API No.	15-009-25,842-00-00		
Company	Hamby Oil, LLC		
Well	Miller #1		
Field	Unknown		
County	Barton		
Location	NW SW NW NE 950' FNL & 2515' FEL		
Sec: 16	Twp: 20S	Rge: 11W	Elevation 1766
Log Measured From	Ground Level	Kelly Bushing	8 Ft. Above Perm. Datum
Drilling Measured From	Kelly Bushing		
Date	5/18/2013		
Run Number	One		
Type Log	CNL / CDL		
Depth Driller	3340		
Depth Logger	3344		
Bottom Logged Interval	3323		
Top Logged Interval	2600		
Type Fluid In Hole	Chemical		
Salinity, PPM CL	6000		
Density Level	9.3		
Level	Full		
Max. Rec. Temp. F	109		
Operating Rig Time	3 1/2 Hours		
Equipment -- Location	10 Hays		
Recorded By	D Kerr		
Witnessed By	Kurt Talbott		

Borehole Record				Casing Record			
Run No.	Bit	From	To	Size	Wgt.	From	To
1	12.25	00	271	8.625	24#	00	271
2	7.875	271	3340				

Other Services
DIL
MEL
Elevation
K.B. 1774
D.F.
G.L. 1766

<<< Fold Here >>>

All interpretations are opinions based on inferences from electrical or other measurements and we cannot and do not guarantee the accuracy or correctness of any interpretation, and we shall not, except in the case of gross or willful negligence on our part, be liable or responsible for any loss, costs, damages, or expenses incurred or sustained by anyone resulting from any interpretation made by any of our officers, agents or employees. These interpretations are also subject to our general terms and conditions set out in our current Price Schedule.

Comments

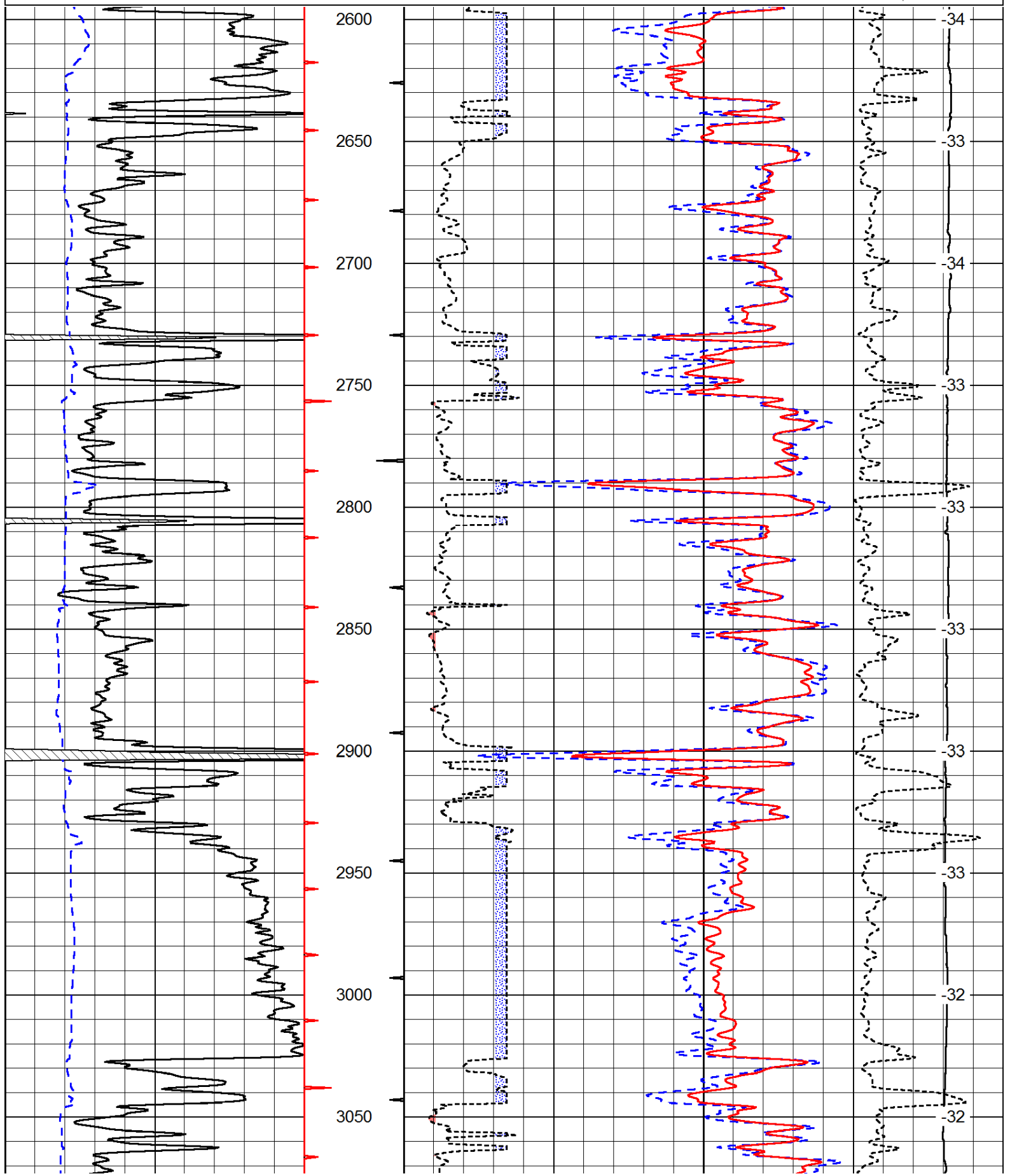
Thank you for using Pioneer Energy Services
www.pioneerenergy.com
785 625 3858

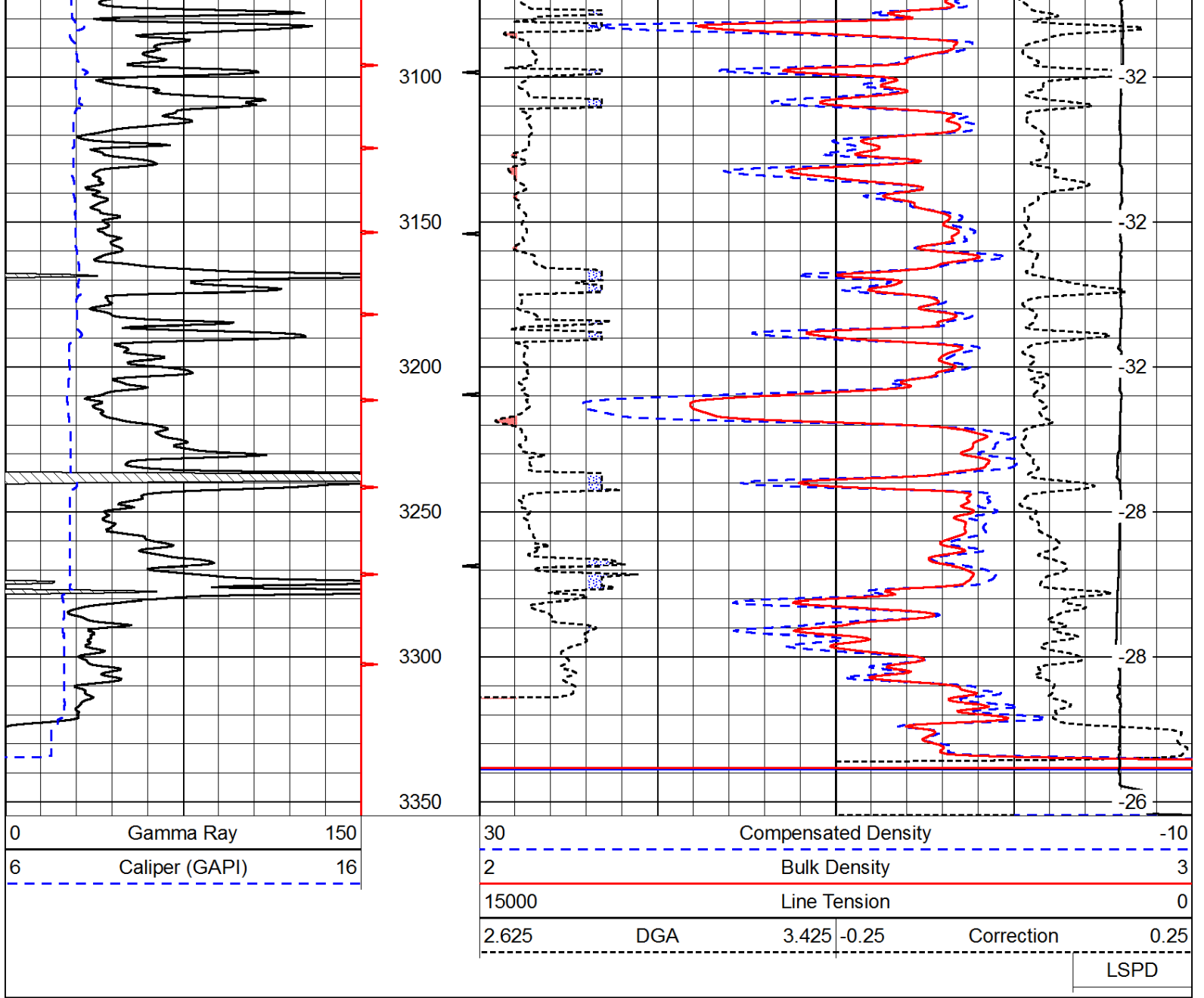
Ellinwood Ks, Southeast to SE 100 Ave, South to 30 RD,
2 1/2 East, South Into

Database File: c:\warrior\data\hamby oil_miller #1\hamby_miller_1hd.db
 Dataset Pathname: DIL\hamstk
 Presentation Format: cdl
 Dataset Creation: Sat May 18 21:48:44 2013
 Charted by: Depth in Feet scaled 1:600

0	Gamma Ray	150
6	Caliper (GAPI)	16

30	Compensated Density		-10
2	Bulk Density		3
15000	Line Tension		0
2.625	DGA	3.425	-0.25
			Correction
			0.25
LSPD			





Database File: c:\warrior\data\hamby oil_miller #1\hamby_miller_1hd.db
 Dataset Pathname: DIL/hamstk
 Presentation Format: cndlspec
 Dataset Creation: Sat May 18 21:48:44 2013
 Charted by: Depth in Feet scaled 1:240

