



**GAMMA RAY  
CEMENT BOND  
COMPLETION LOG**

Company	POSTROCK ENERGY CORP.	Location:	2405 FSJ & 669 <sup>th</sup> FEL NE NW NE SE 5 SEC 5 TWP 28S RGE 17E	Other Services	
Well	MARPLE LIVING TRUST #5-3	APR # :	15-205-28050-00-00		
Field	CHEROKEE BASIN CBM	County	WILSON	State	KANSAS
County	WILSON	APR # :	15-205-28050-00-00		
Date	10-29-2012	Permanent Datum	GL	Elevation	1002'
Run Number	1 NW	Log Measured From	GL	Elevation	K.B D.F G.L. 1002'
Depth Logger	11301.2'	Drilling Measured From	GL		
Top Log Interval	0				
Bottom Logged Interval	11301.2'				
Fluid Level	32				
Type Fluid	WATER				
Production Ceiling	5.5" @ TD				
Max. Recorded Temp.					
Estimated Cement Top					
Calculated Cement Top					
Amount & Type Cement					
Drilling Contractor					
Equipment Number	105				
Location					
Recorded By	GOBALLEYR				
Witnessed By	MICHELIS J				

<<< Fold Here >>>  
All interpretations are opinions based on inferences from electrical or other measurements and we cannot and do not guarantee the accuracy or correctness of any interpretation, and we shall not, except in the case of gross or willful negligence on our part, be liable or responsible for any loss, costs, damages, or expenses incurred or sustained by anyone resulting from any interpretation made by any of our officers, agents or employees. These interpretations are also subject to our general terms and conditions set out in our current Price Schedule.

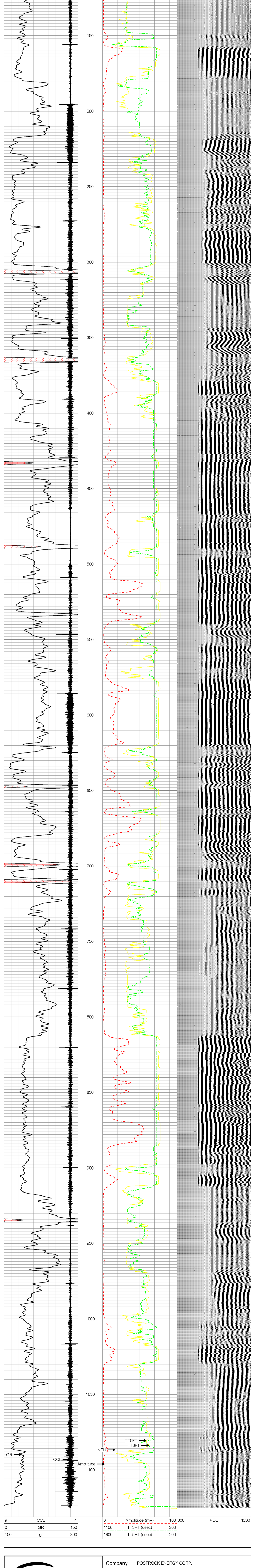
Comments  
**THANK YOU**

Sensor	Offset (ft)	Schematic	Description	Len (ft)	OD (in)	Wt (lb)
GR	7.59		GR-TITAN 169 (TIT169_001) Titan 1 11/16" Gamma Ray	4.75	1.69	20.00
CCL	5.05		CCL-TITAN 169 (TIT169) Titan 1 11/16" Logging CCL	1.83	1.69	7.50
NEU	0.63		NEU-TITAN 169 (TIT169_001) Titan 1 11/16" Neutron	4.33	1.69	20.00

Dataset: marple living trust #5-3.db: field/well/run1/pass1  
Total Length: 10.92 ft  
Total Weight: 47.50 lb  
O.D.: 1.69 in

Database File:	g:\marple living trust #5-3.db
Dataset Pathname:	pass2MERGE
Presentation Format:	scbl_dr
Dataset Creation:	Mon Oct 29 09:55:16 2012
Charted by:	Depth in Feet scaled 1:240

9	CCL	-1	0	Amplitude (mV)	100	300	VDL	1200
0	GR	150	1100	TT3FT (usec)	200			
150	gr	300	1800	TT5FT (usec)	200			



Company	POSTROCK ENERGY CORP.	Date	10-29-2012
Well	MARPLE LIVING TRUST #5-3		
Field	CHEROKEE BASIN CBM		
County	WILSON SECTION 5 TWP 28S RGE 17E		
State	KANSAS		

