



MIDWEST SURVEYS

LOGGING - PERFORATING - CONSULTING SERVICES
P.O. Box 68, Osawatomie, KS 66064
913 / 755 - 2128

GAMMA RAY / NEUTRON / CCL

File No.

API # 15-207-28,369

Company Haas Petroleum, LLC.
Well B. Edwards No. 1i-HP
Field Winterscheid
County Woodson State Kansas

Location 1880' FSL & 530' FWL
NE-SW-NW-SW
Other Services Perforate
Elevation
Sec. 35 Twp. 23s Rge. 14e
Permanent Datum GL Elevation 1146'
Log Measured From GL K.B. 1153'
Drilling Measured From KB 7' From GL D.F. NA
G.L. 1146'

Date	02-05-2013		
Run Number	One		
Depth Driller	1743.0		
Depth Logger	1739.3		
Bottom Logged Interval	1738.3		
Top Log Interval	200.0		
Fluid Level	Full		
Type Fluid	Water		
Density / Viscosity	NA		
Salinity - PPM Cl	NA		
Max Recorded Temp	NA		
Estimated Cement Top	0.0		
Equipment No.	Location	104	Osawatomie
Recorded By	Gary Windisch		
Witnessed By	Mark Haas		

RUN No.	BORE-HOLE RECORD				CASING RECORD		
	BIT	FROM	TO	SIZE	WGT.	FROM	TO
001	12.25"	00'	40.0	8.625"	20.0#	0.0	40.0
002	6.75"	40.0	1743.0	4.50"	10.5#	0.0	1740.0

<<< Fold Here >>>

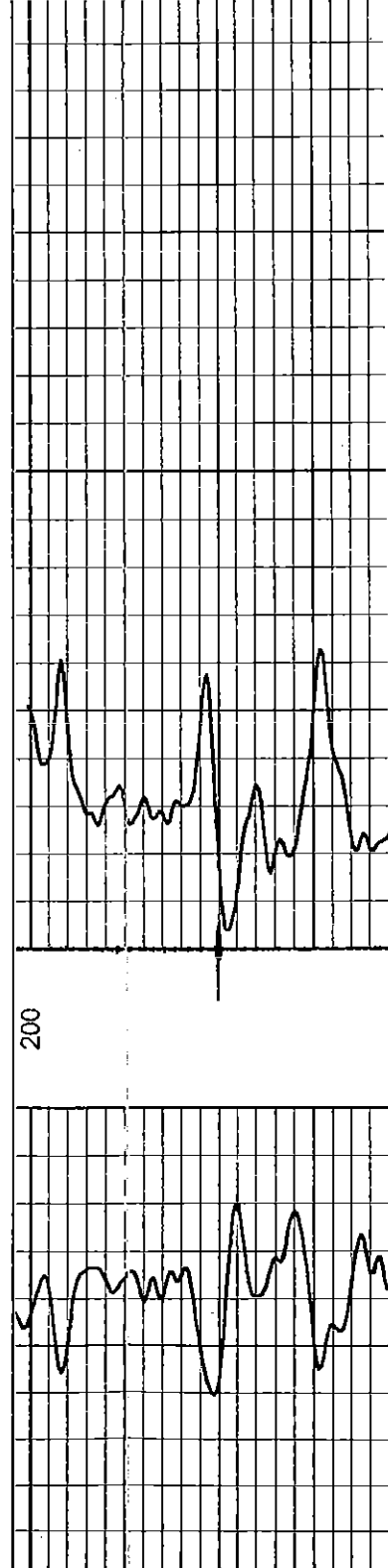
All interpretations are opinions based on inferences from electrical or other measurements and we cannot and do not guarantee the accuracy or correctness of any interpretation, and we shall not, except in the case of gross or willful negligence on our part, be liable or responsible for any loss, costs, damages, or expenses incurred or sustained by anyone resulting from any interpretation made by any of our officers, agents or employees. These interpretations are also subject to our general terms and conditions set out in our current Price Schedule.

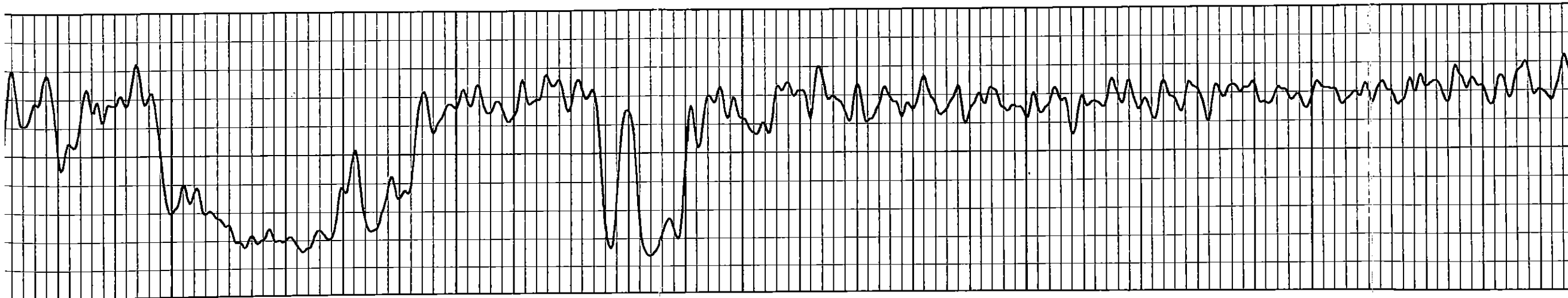
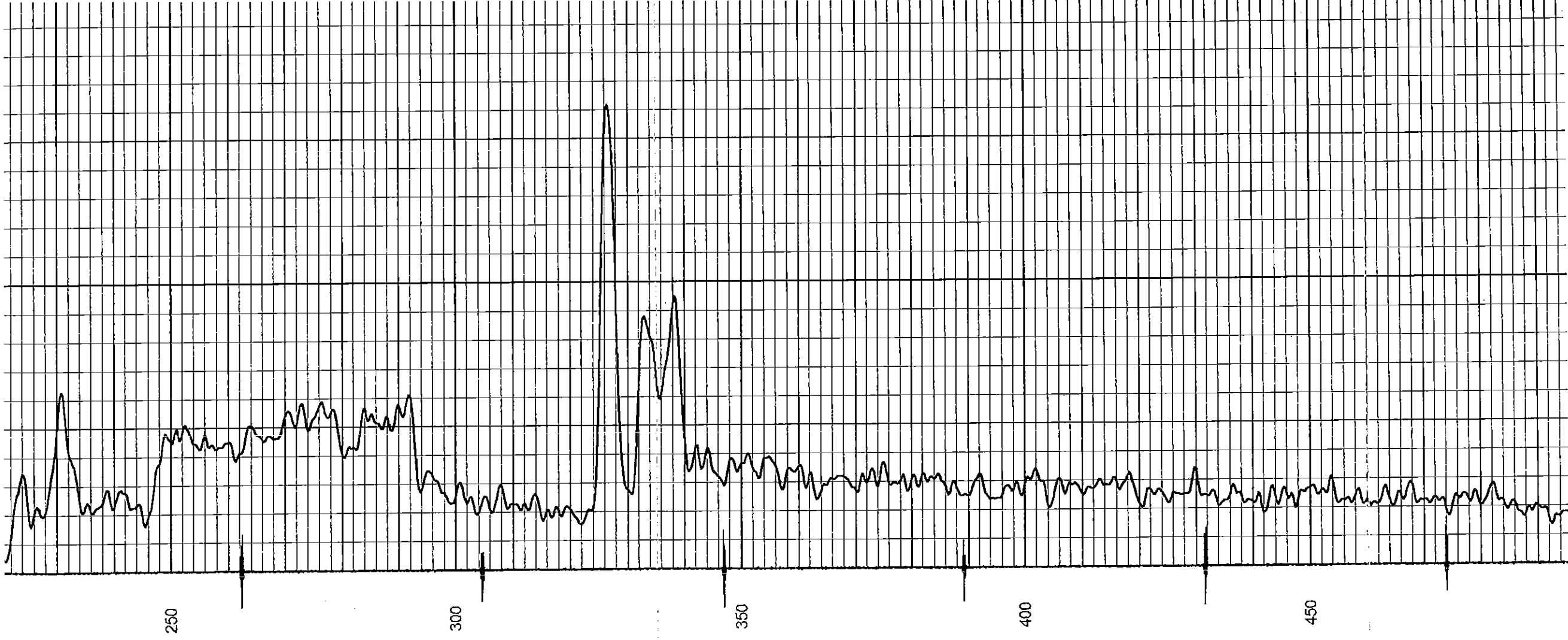
Comments

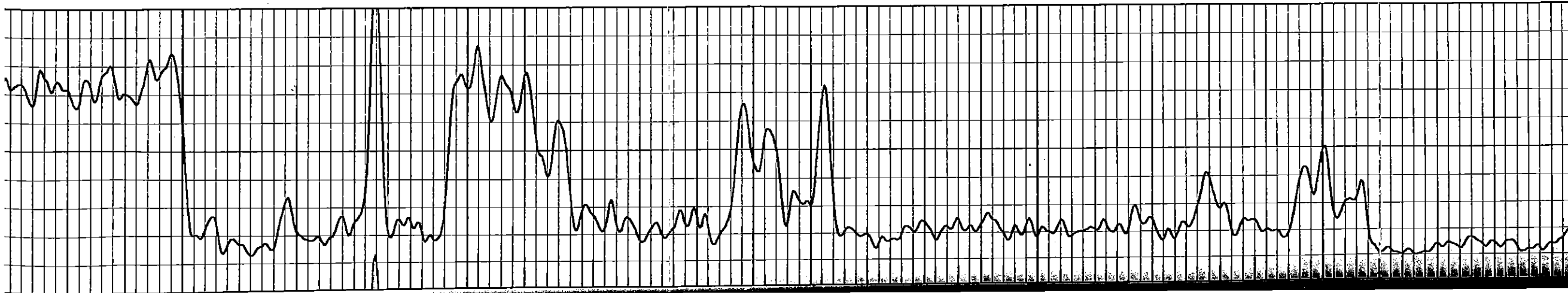
Drilling Contractor :
Skyy Drilling Rig -3

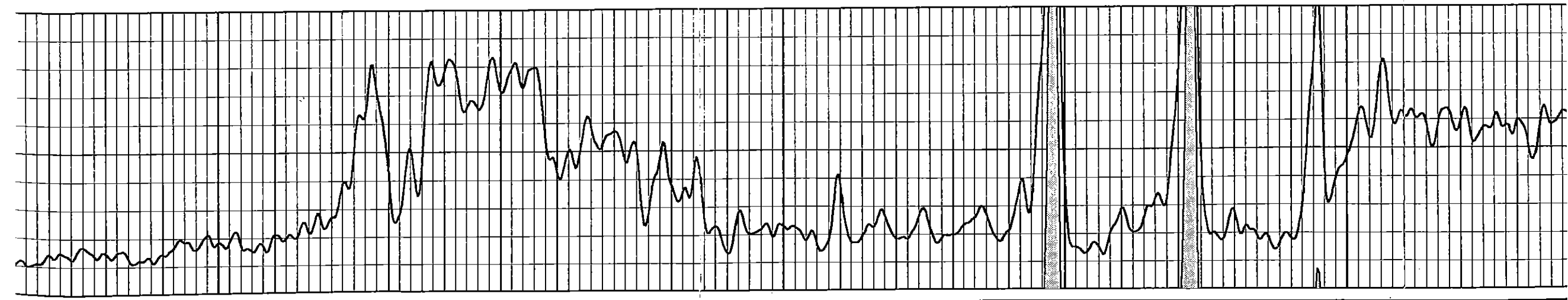
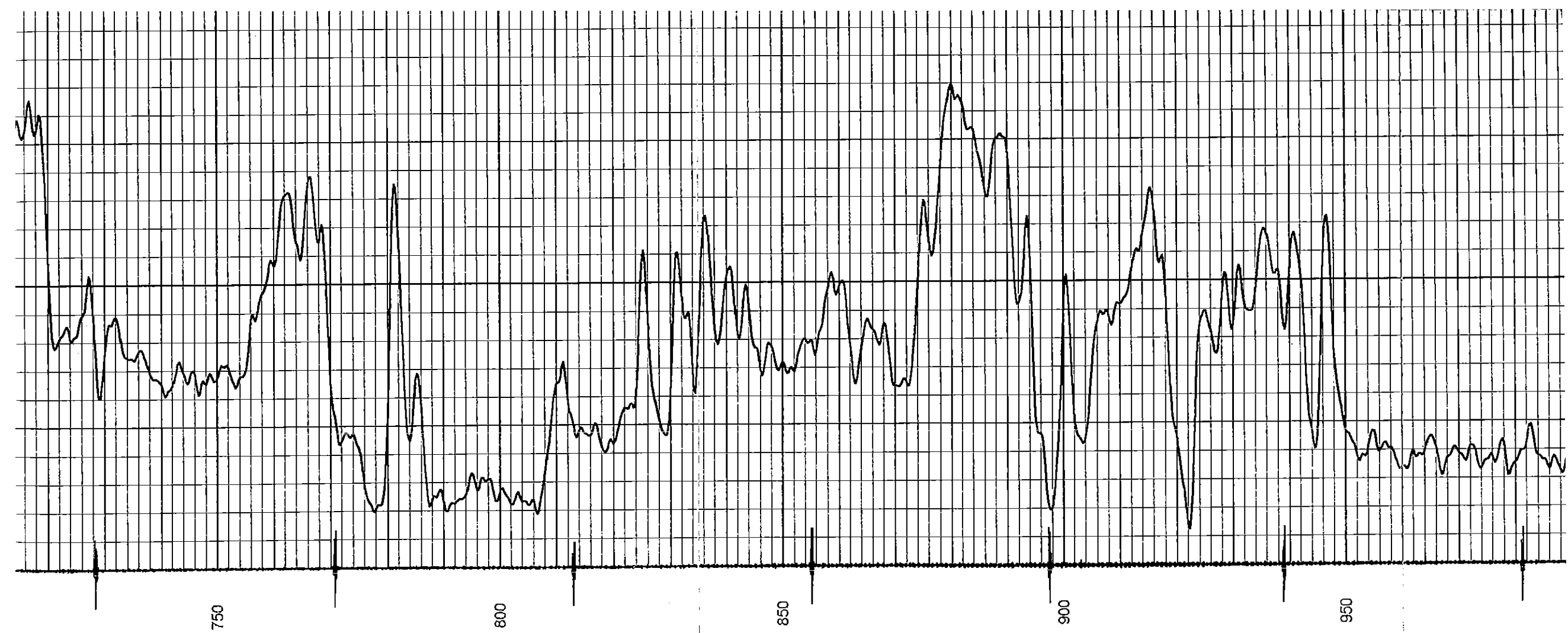
Database File: edwards1ib.db
Dataset Pathname: pass1
Presentation Format: gr-n-ccl
Dataset Creation: Tue Feb 05 10:30:42 2013 by Log SCH 111116
Charted by: Depth in Feet scaled 1:240

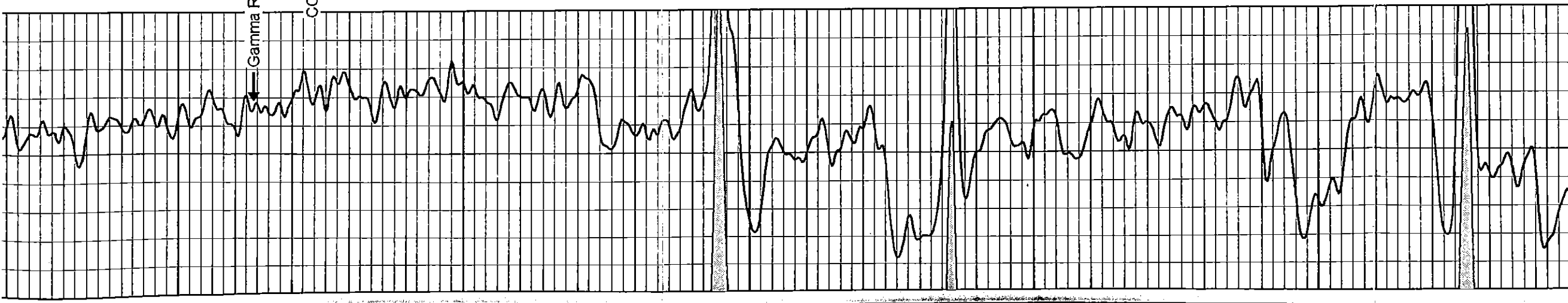
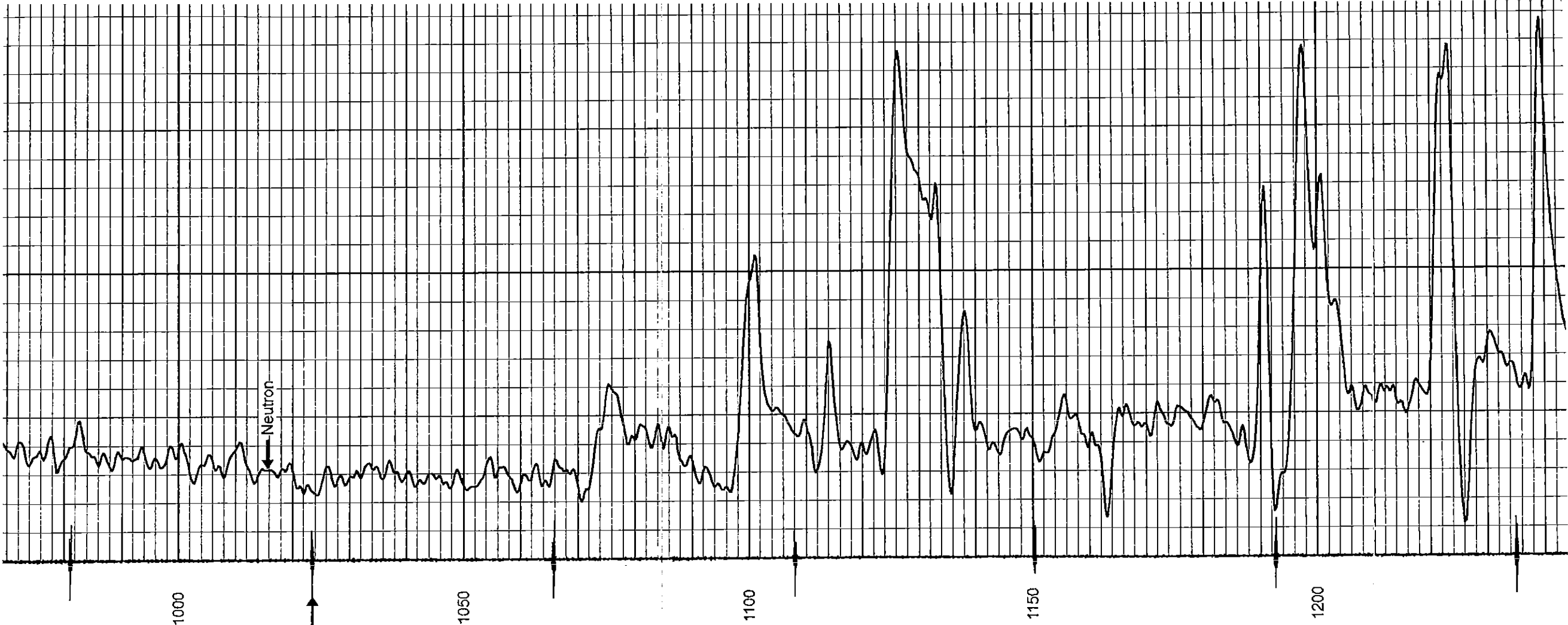
0 150 200 250 300 350 400 450 500 550 600 650 700 750 800 850 900 950 1000 1050 1100 1150 1200 1250 1300 1350 1400 1450 1500 1550 1600 1650 1700 1750 1800
Gamma Ray (cps) Neutron (cps)

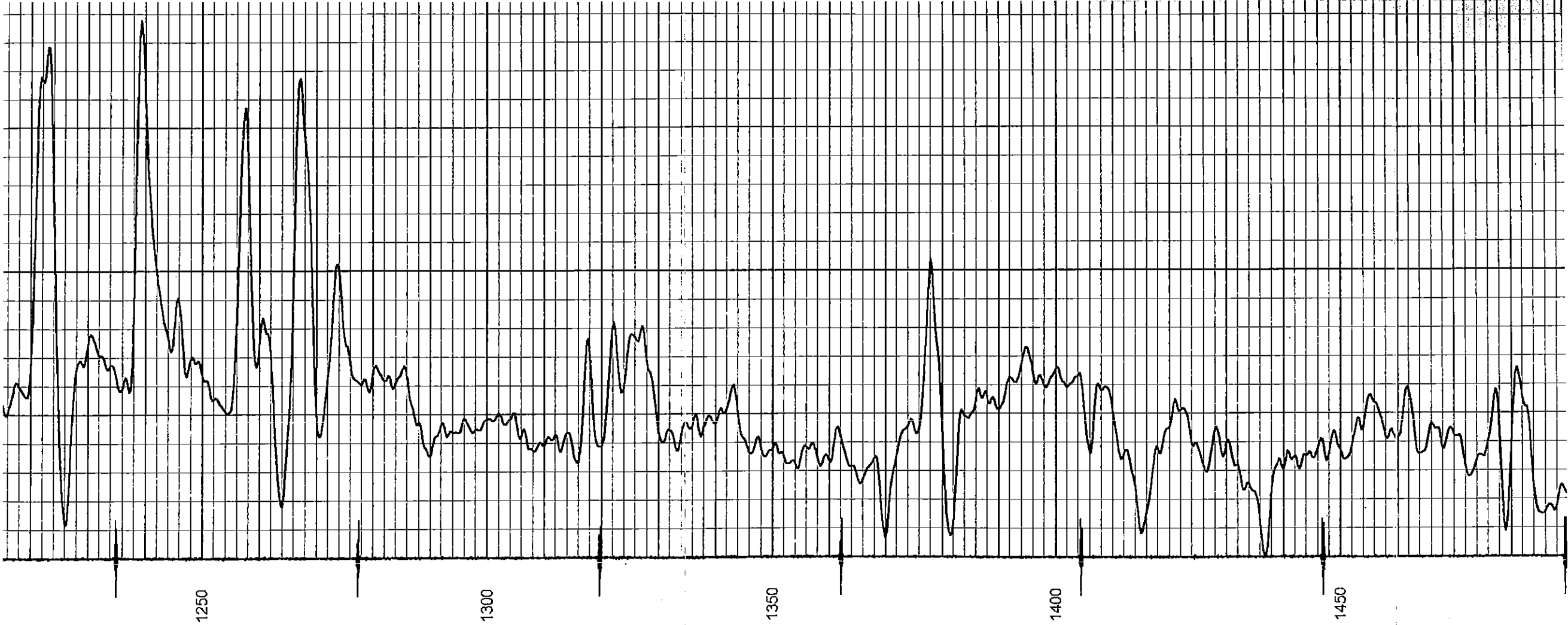












1250

1300

1350

1400

1450

