



Pioneer Energy Services

Dual Induction Log

API No.	15-195-22839-00-00		
Company	Brito Oil Company, Inc.		
Well	Griebel #1-31		
Field	Wildcat		
County	Trego	State	Kansas
Location	1527' FNL & 1424' FWL		
Sec: 31	Twp: 11S	Rge: 25W	Other Services CNL/CDL MEL

Permanent Datum	Ground Level	Elevation 2595	K.B. 2604
Log Measured From	Kelly Bushing	9 Ft. Above Perm. Datum	D.F. 2595
Drilling Measured From	Kelly Bushing		G.L. 2595
Date	1/2/2013		
Run Number	One		
Depth Driller	4580		
Depth Logger	4560		
Bottom Logged Interval	4559		
Top Log Interval	250		
Casing Driller	8.625 @ 270		
Casing Logger	264		
Bit Size	7.875		
Type Fluid in Hole	Chemical		
Salinity, ppm CL	1600		
Density / Viscosity	9.4	53	
pH / Fluid Loss	10.5	7.8	
Source of Sample	Flowline		
Rm @ Meas. Temp	0.70	@ 48	
Rmf @ Meas. Temp	0.53	@ 48	
Rmc @ Meas. Temp	0.95	@ 48	
Source of Rmf / Rmc	Charts		
Rm @ BHT	0.27	@ 124	
Operating Rig Time	4 Hours		
Max Rec. Temp. F	124		
Equipment Number	91		
Location	Hays		
Recorded By	D. Schmidt		
Witnessed By	Brad Rine		

<<< Fold Here >>>

All interpretations are opinions based on inferences from electrical or other measurements and we cannot and do not guarantee the accuracy or correctness of any interpretation, and we shall not, except in the case of gross or willful negligence on our part, be liable or responsible for any loss, costs, damages, or expenses incurred or sustained by anyone resulting from any interpretation made by any of our officers, agents or employees. These interpretations are also subject to our general terms and conditions set out in our current Price Schedule.

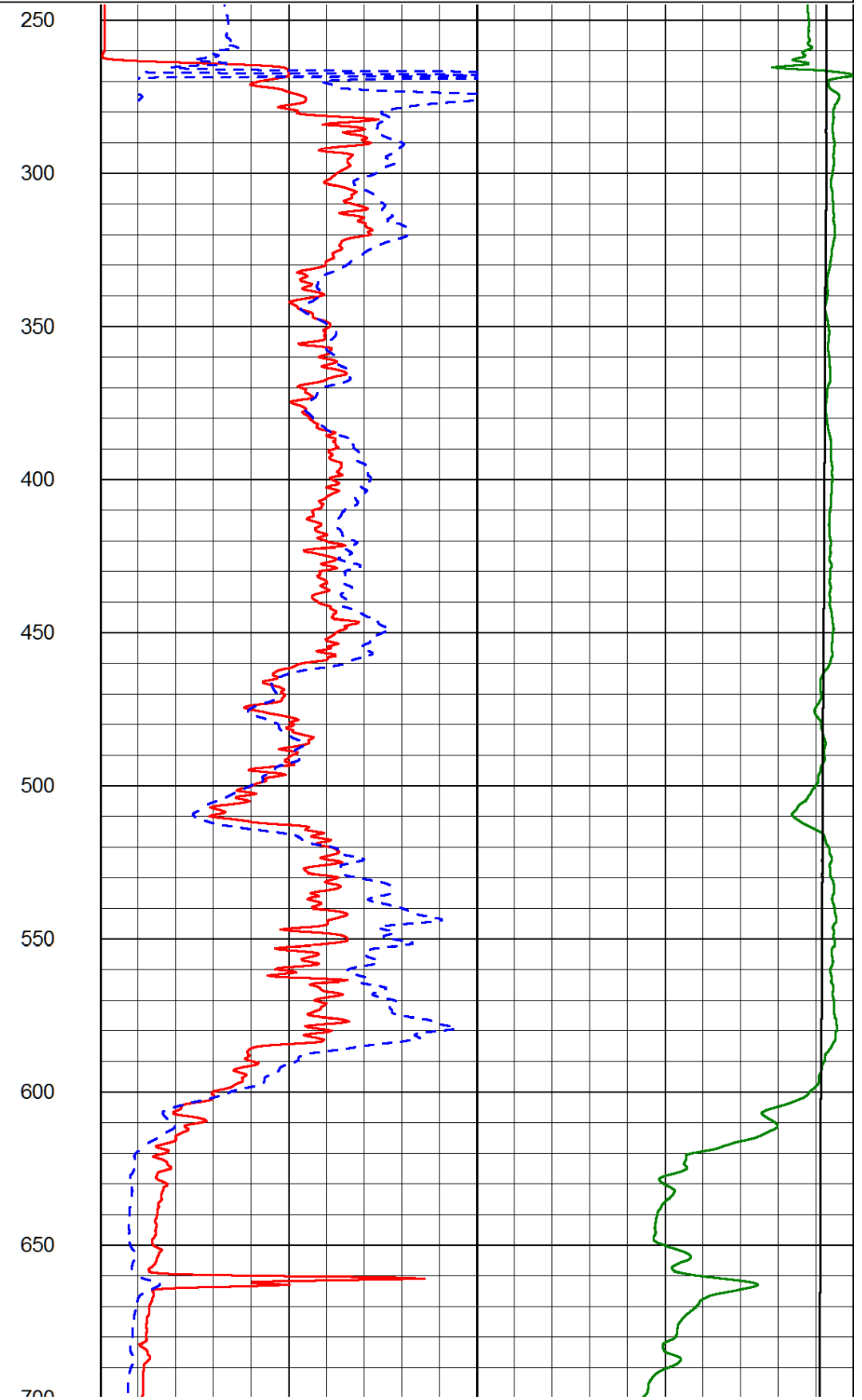
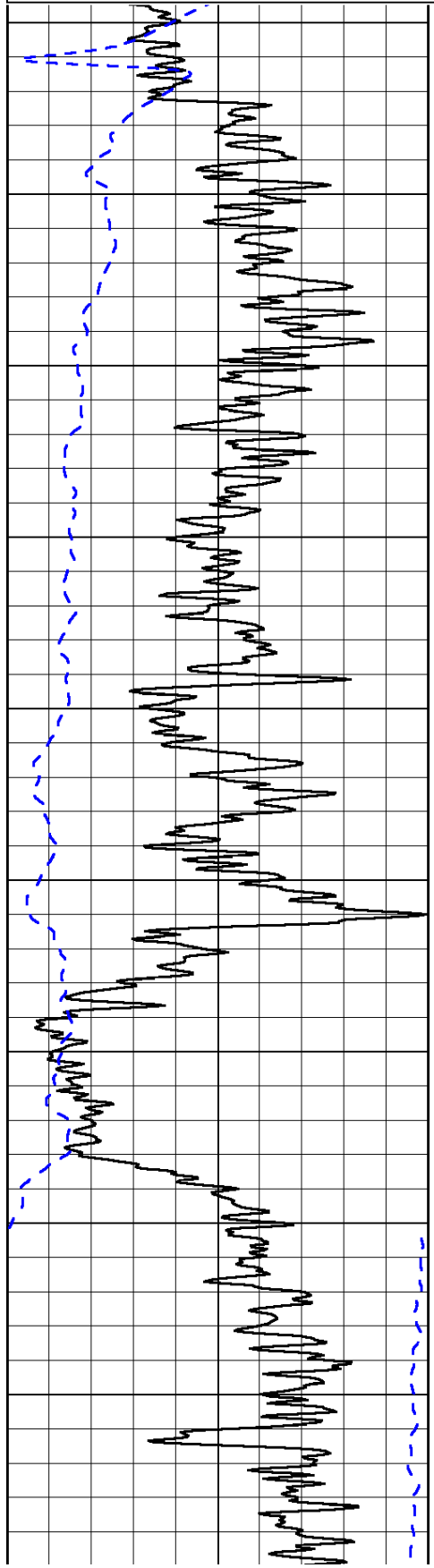
Comments

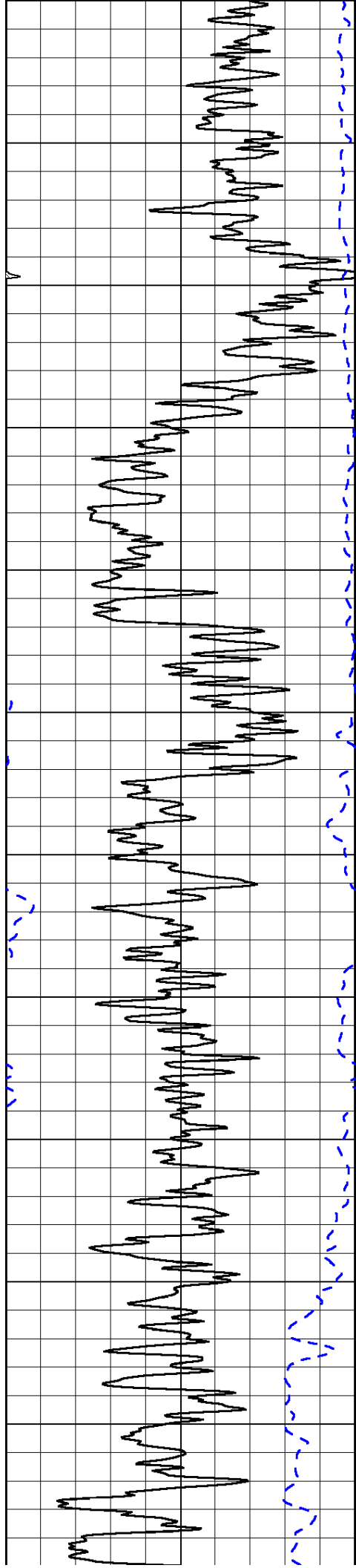
Thank you for using Log-Tech, Inc.
 (785) 625-3858
 Collyer,
 North to G Rd, 1 1/2 West, 1/2 North,
 East into

Database File: brito_010212hd.db
 Dataset Pathname: dil/brstack
 Presentation Format: dil2in
 Dataset Creation: Wed Jan 02 07:16:05 2013
 Charted by: Depth in Feet scaled 1:600

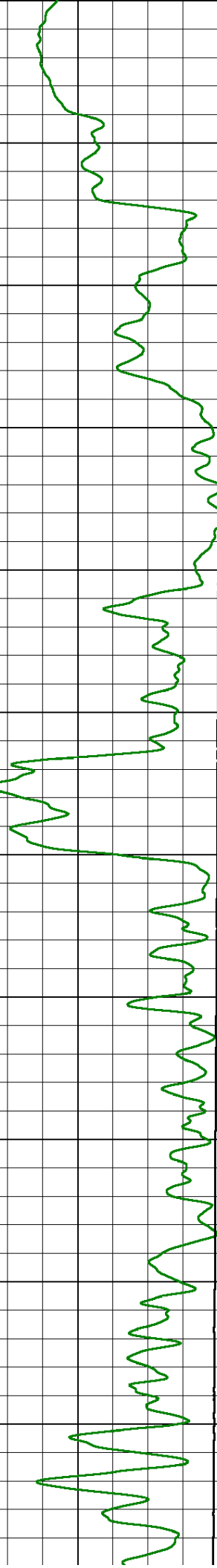
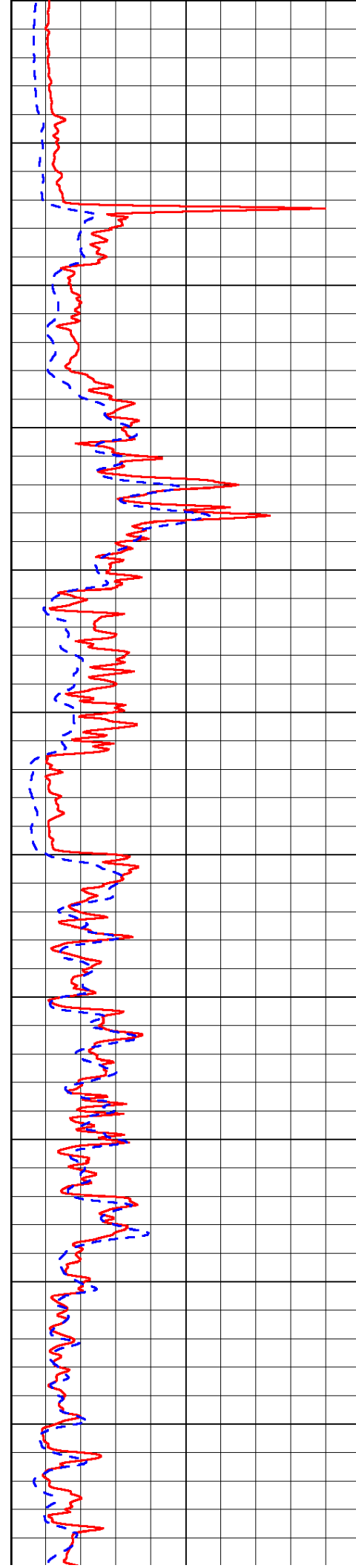
0	Gamma Ray (GAPI)	150
-200	SP (mV)	0

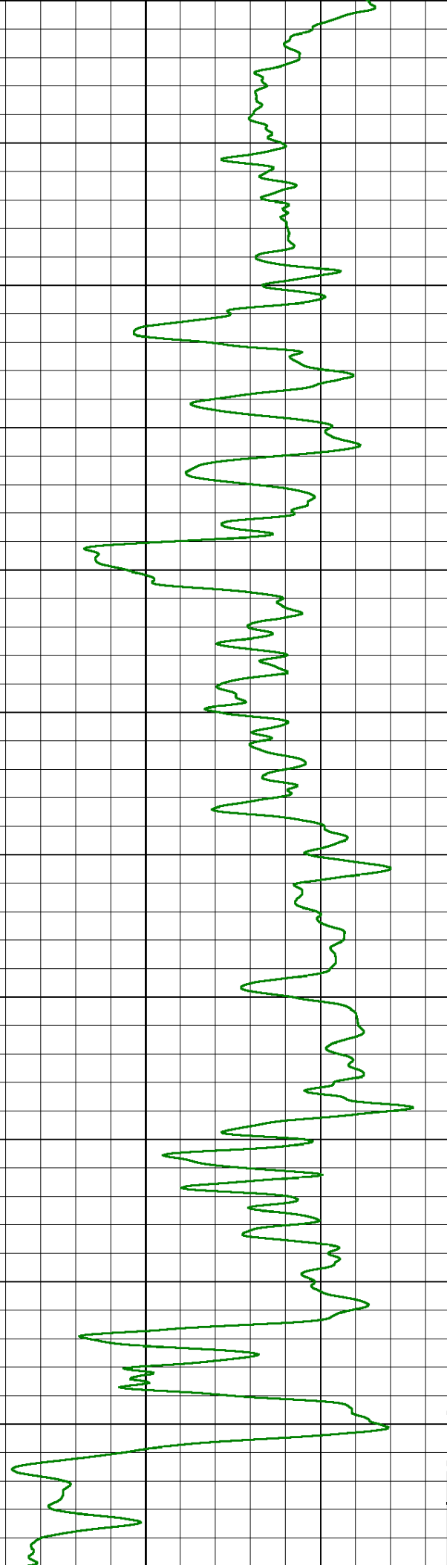
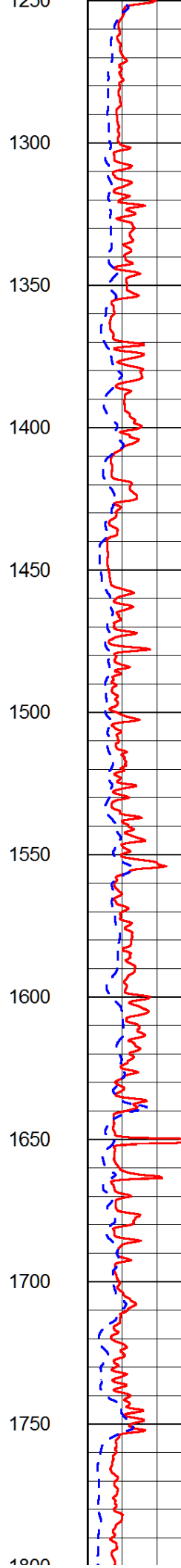
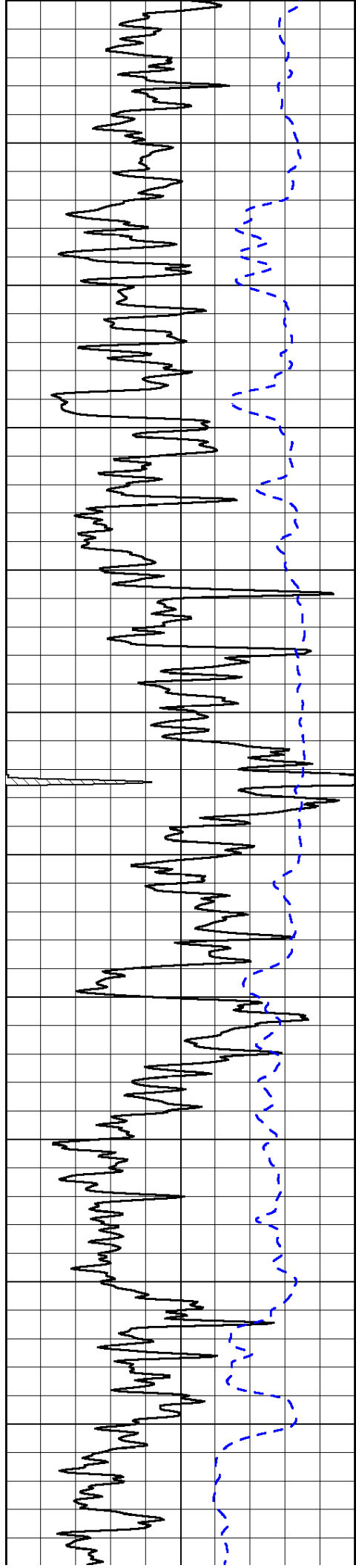
0	Shallow Resistivity (Ohm-m)	50
0	Deep Resistivity (Ohm-m)	50
1000	Conductivity (Ohm-m)	0
15000	Line Tension (lb)	0
50	Shallow Resistivity (Ohm-m)	500
50	Deep Resistivity (Ohm-m)	500

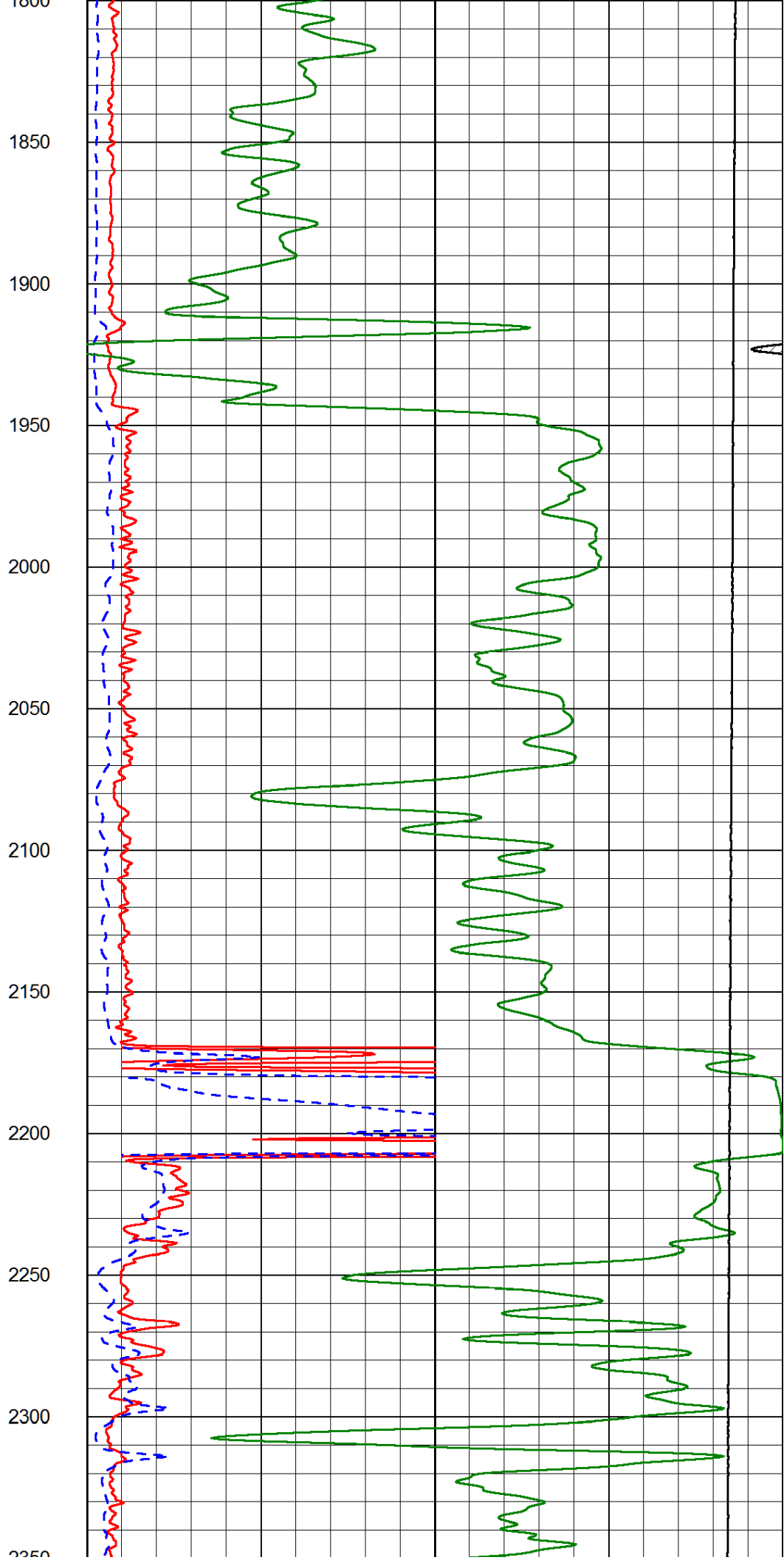
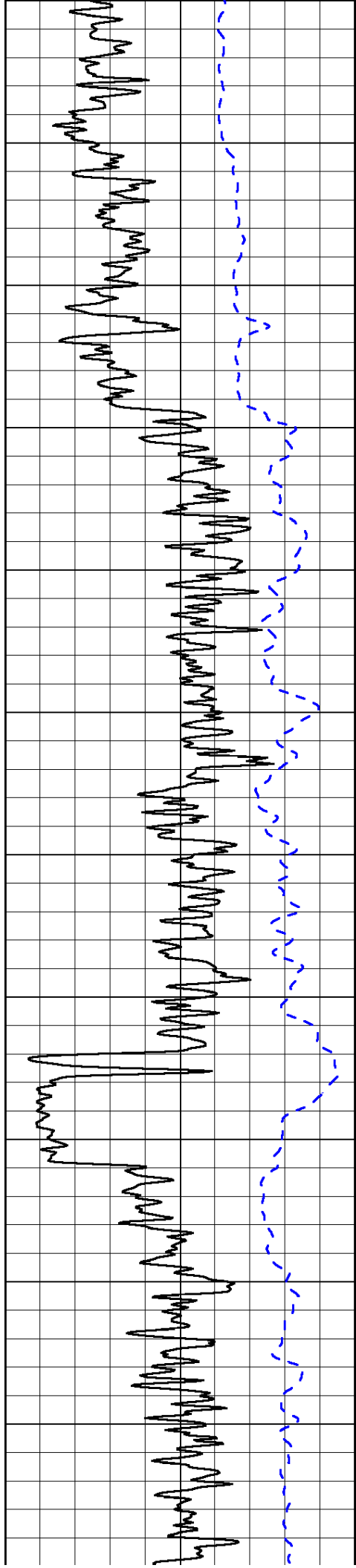


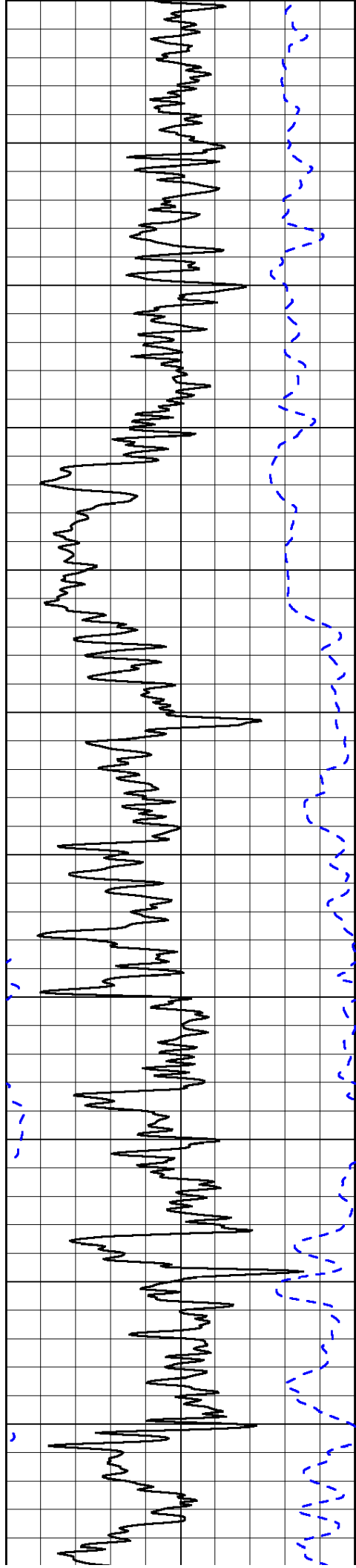


700
750
800
850
900
950
1000
1050
1100
1150
1200
1250

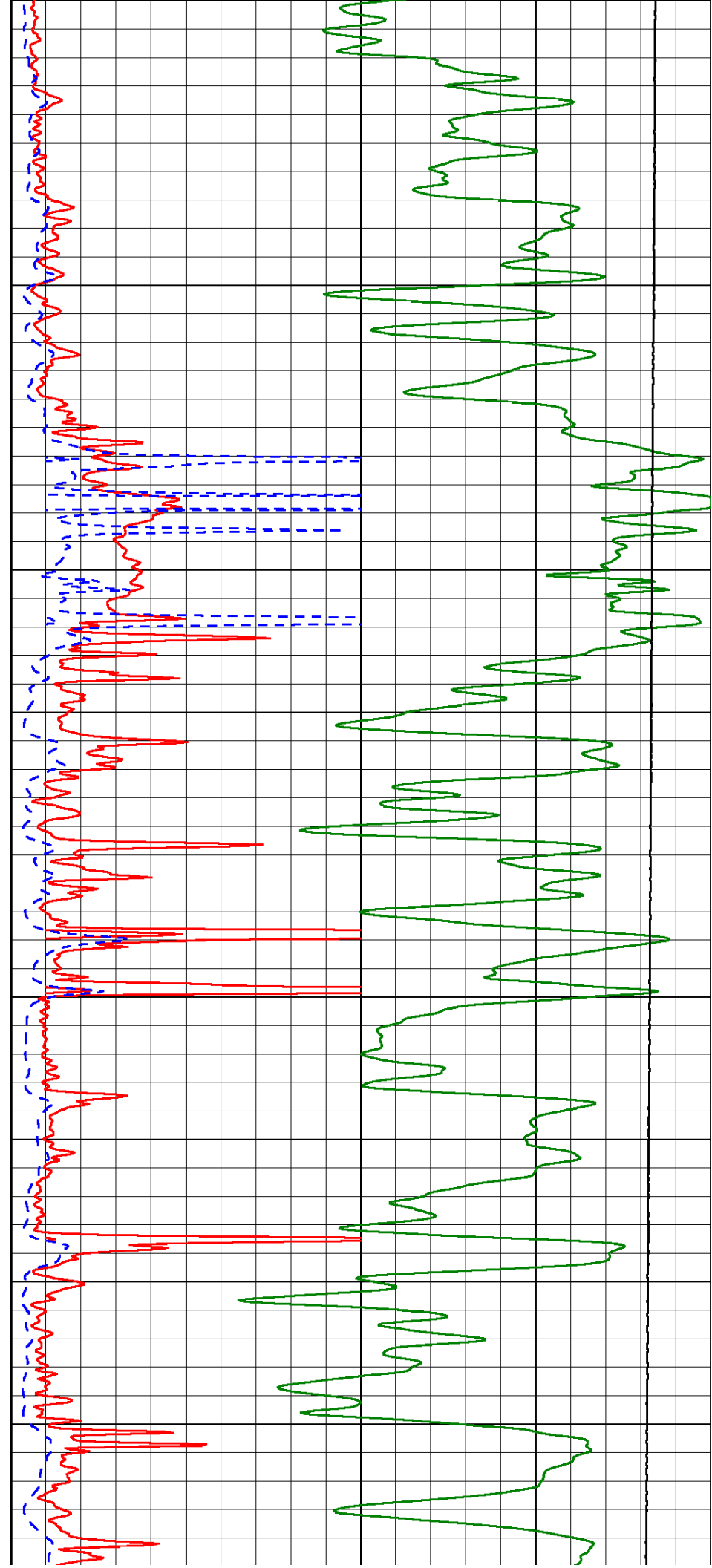


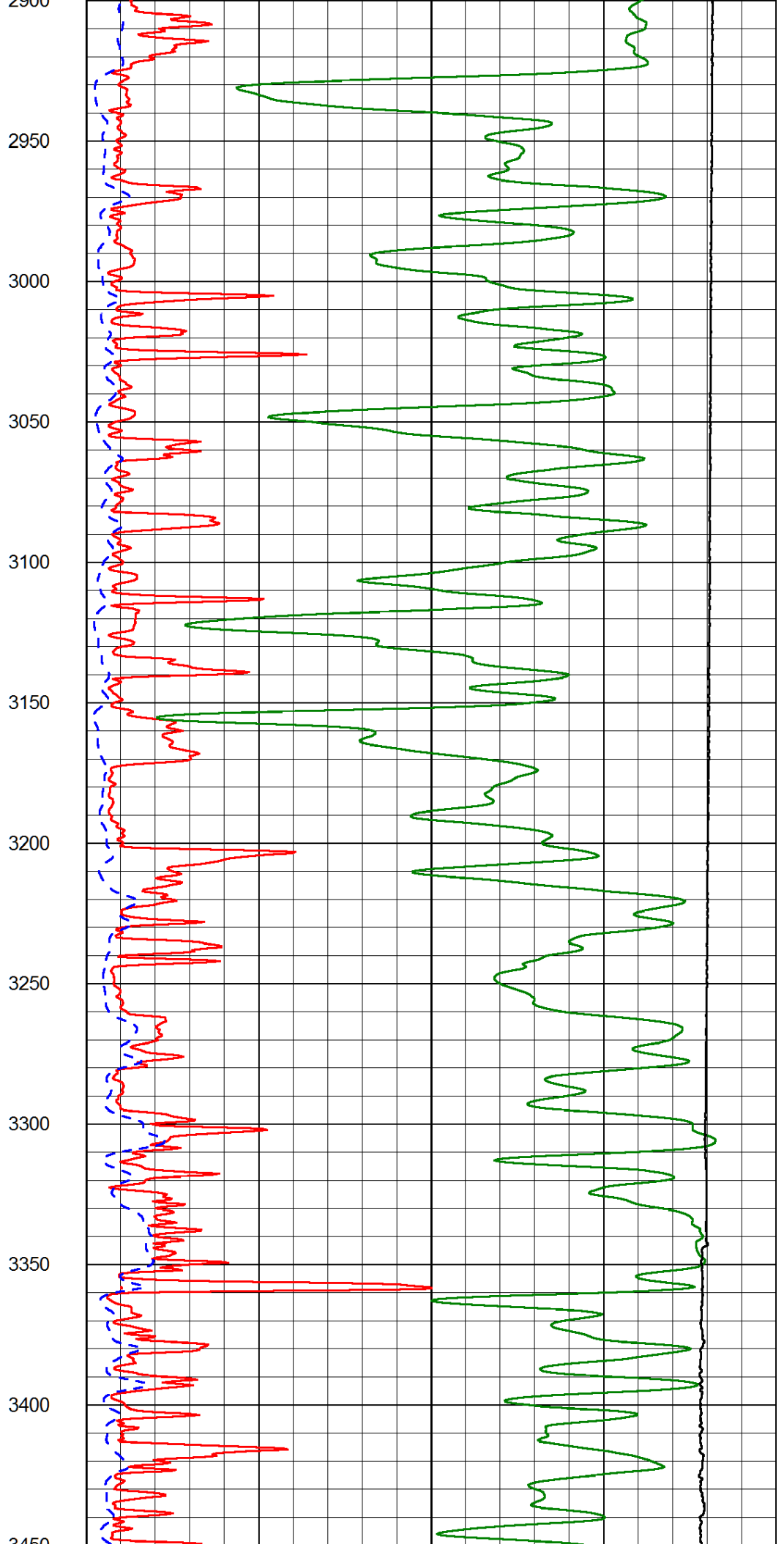
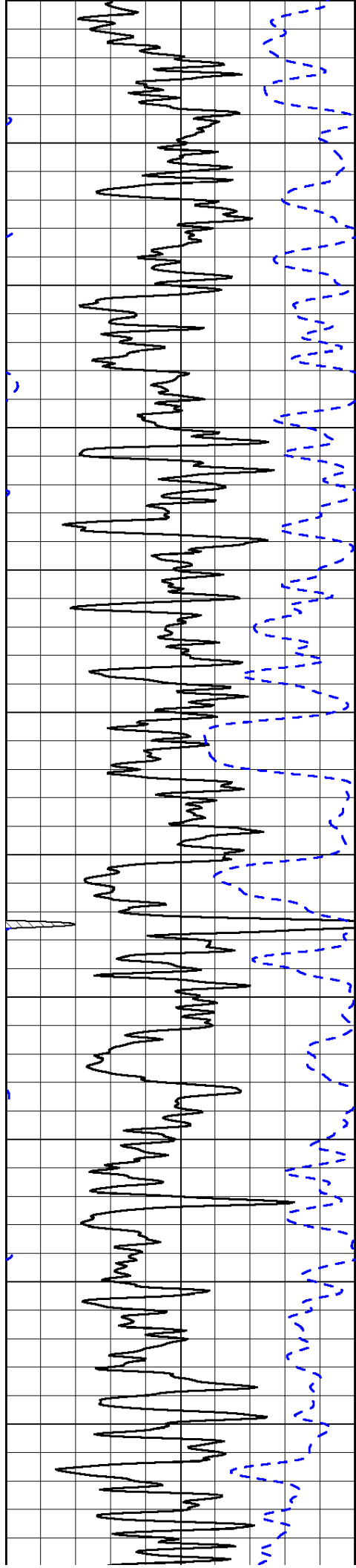


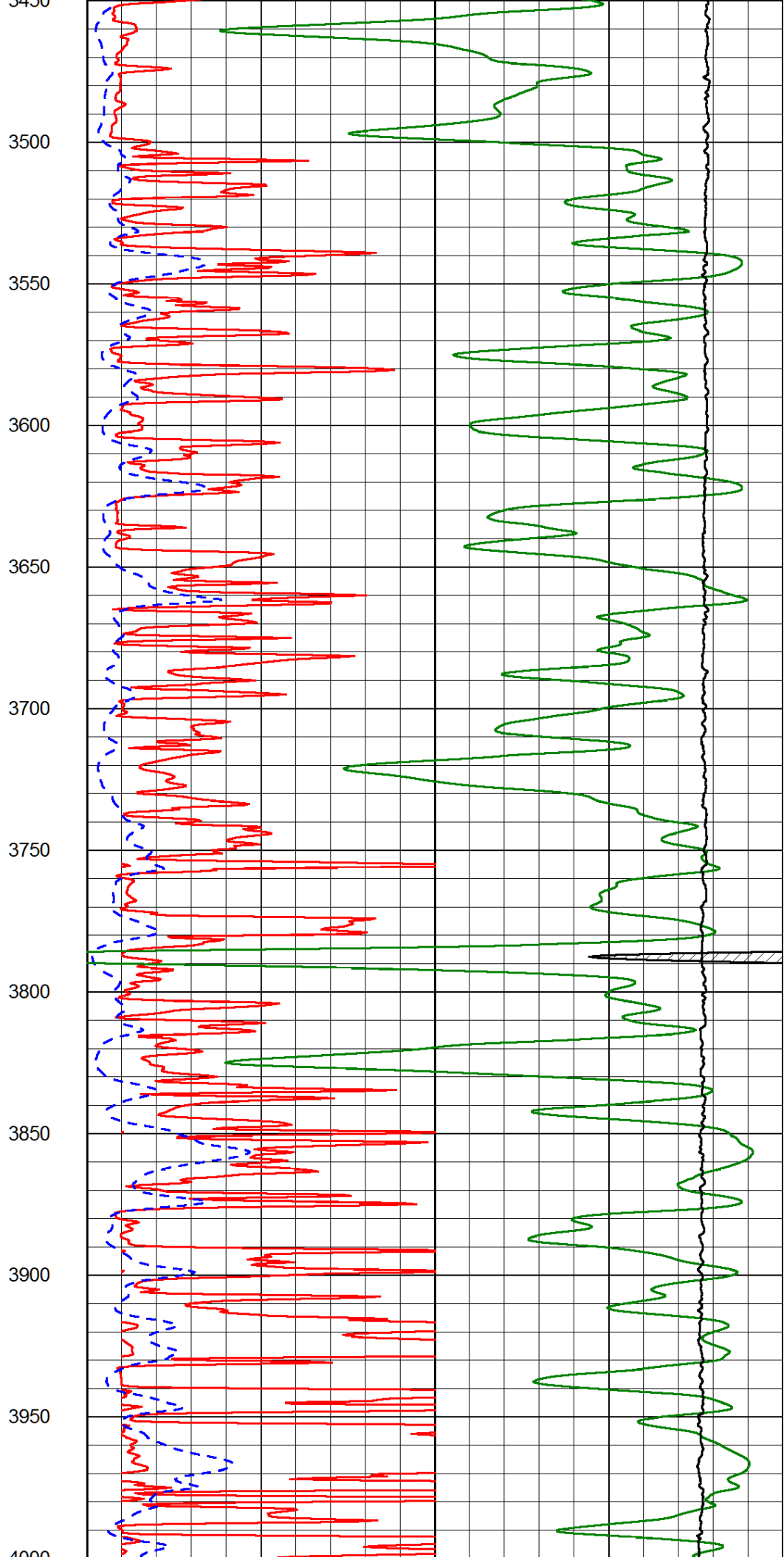
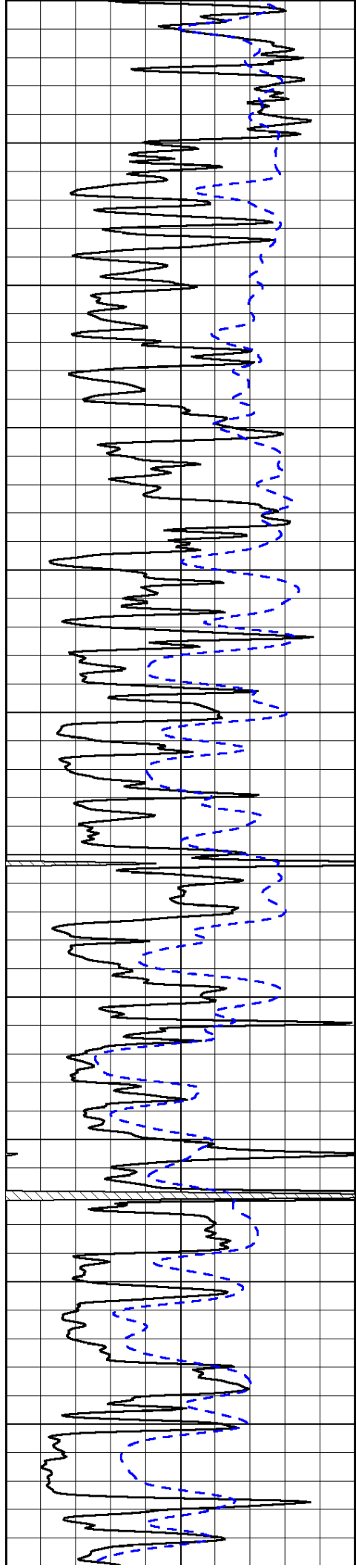


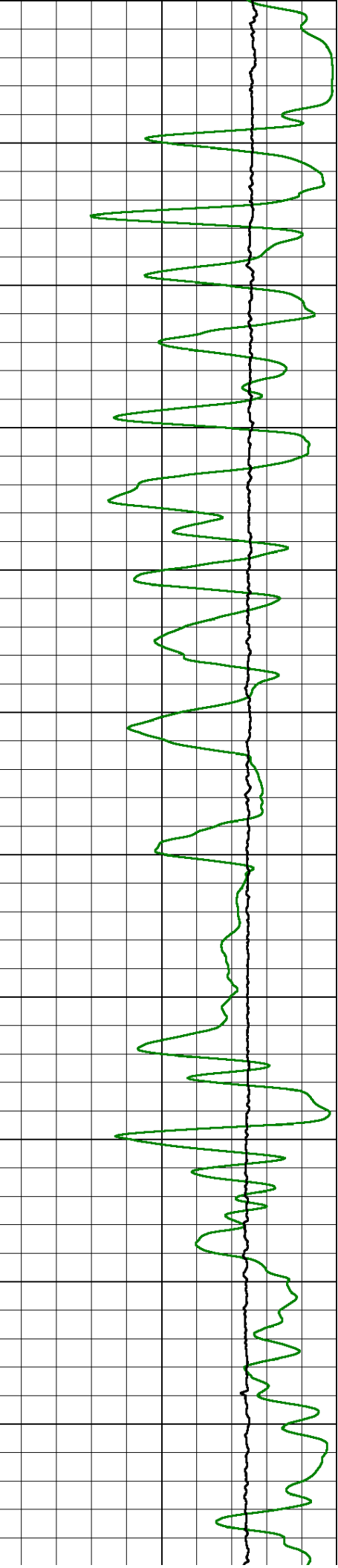
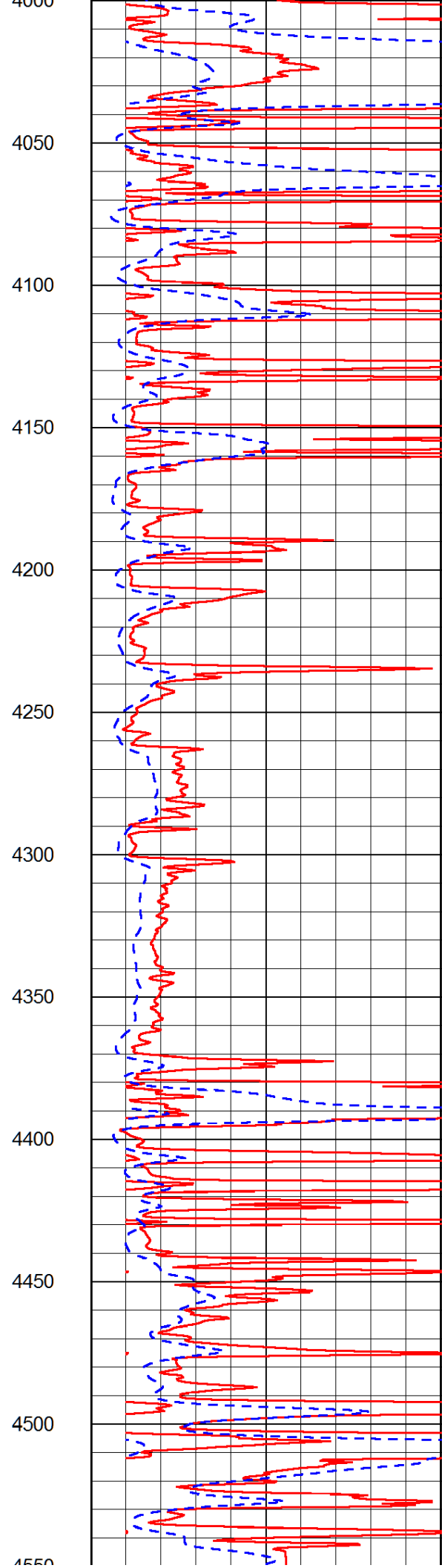
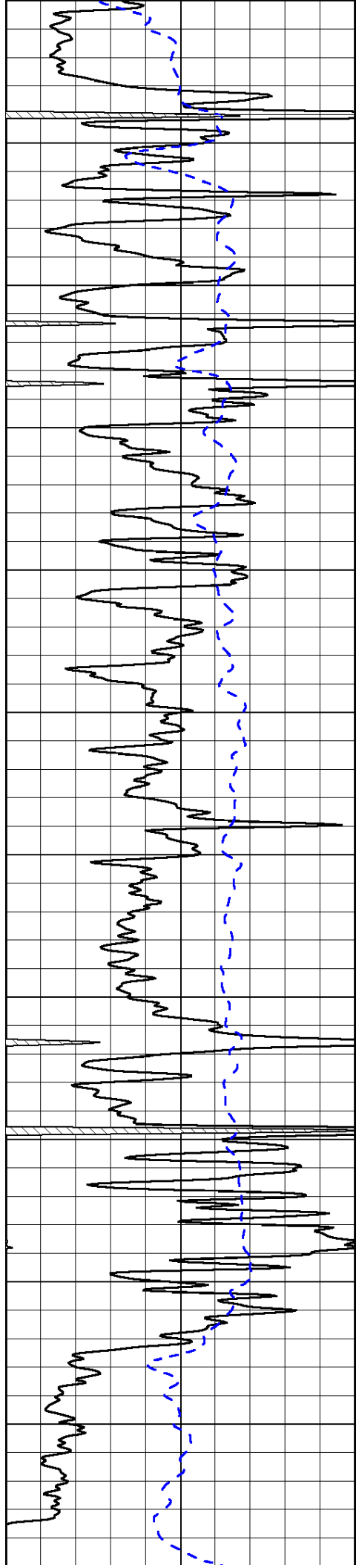


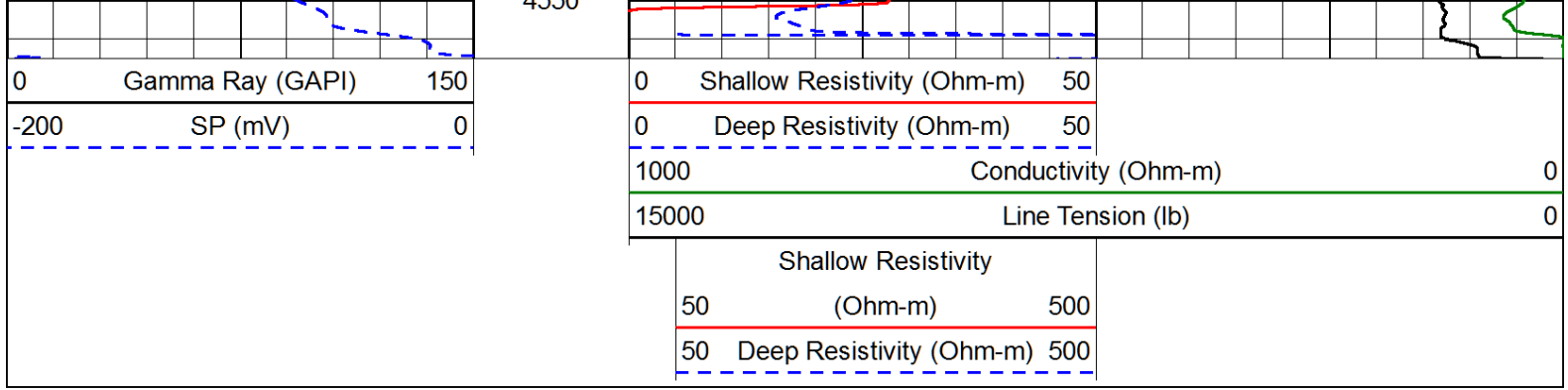
2350
2400
2450
2500
2550
2600
2650
2700
2750
2800
2850
2900



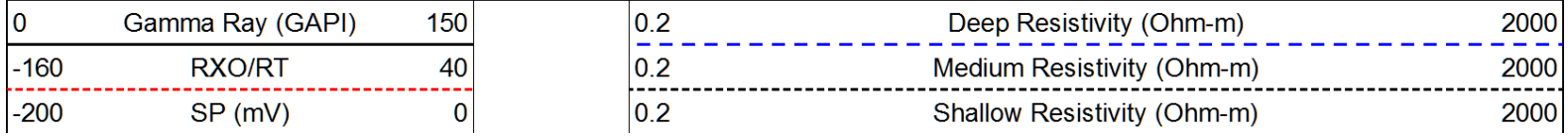
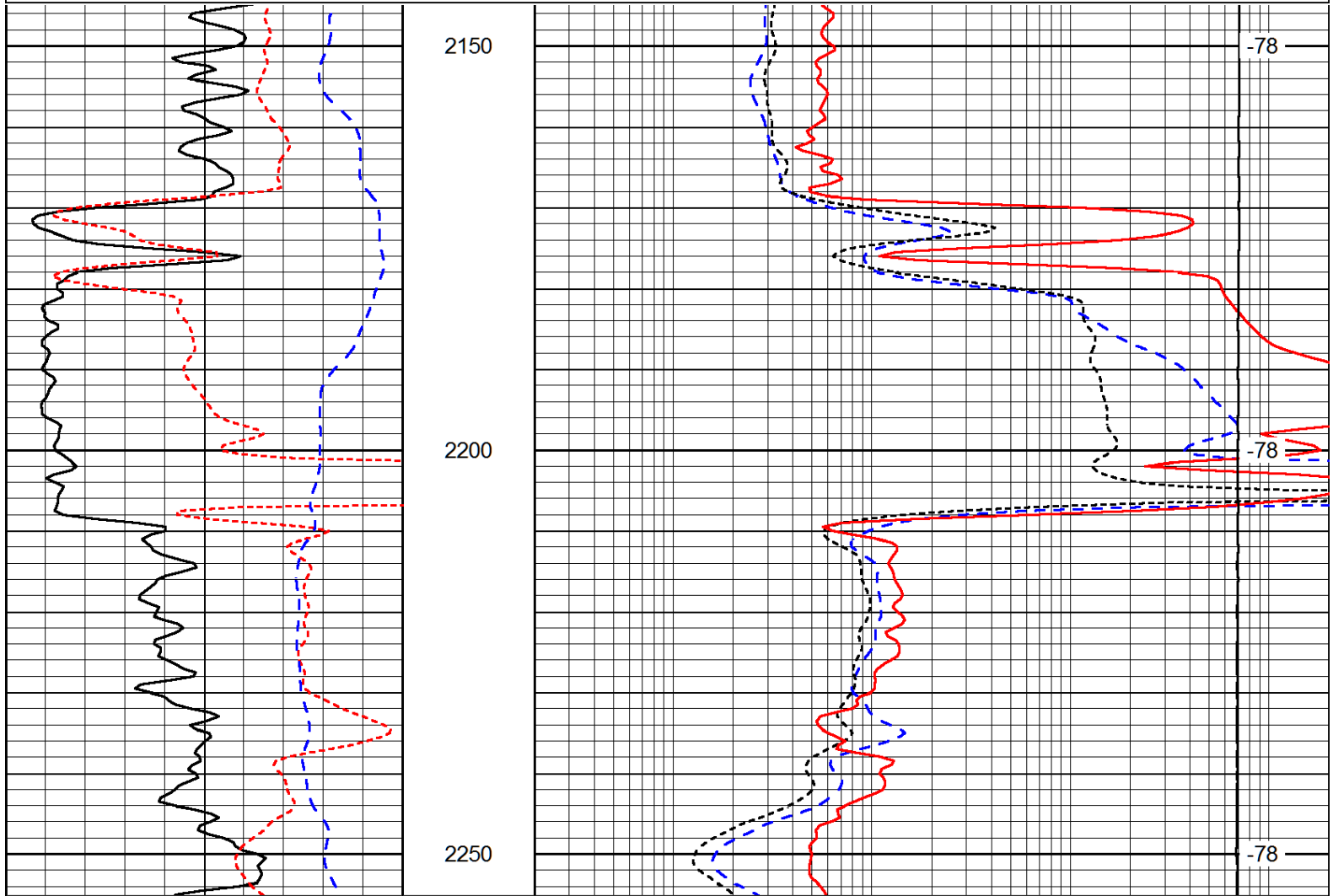
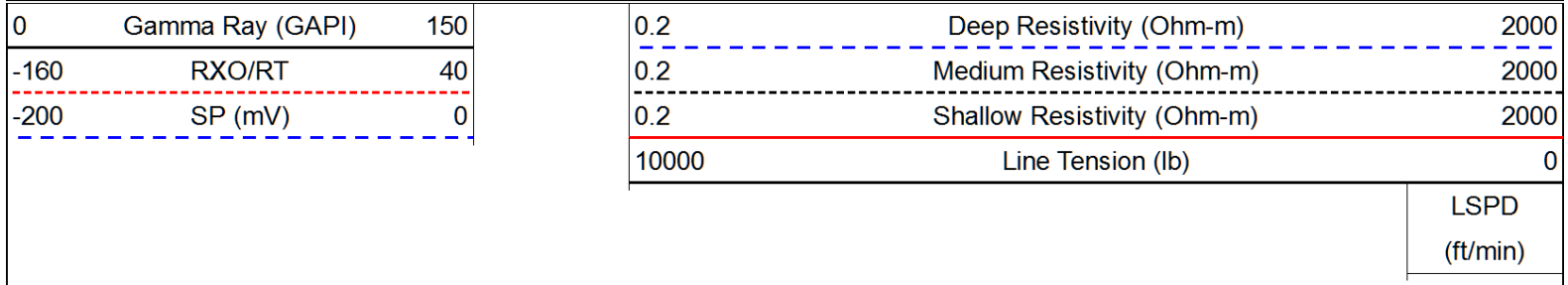








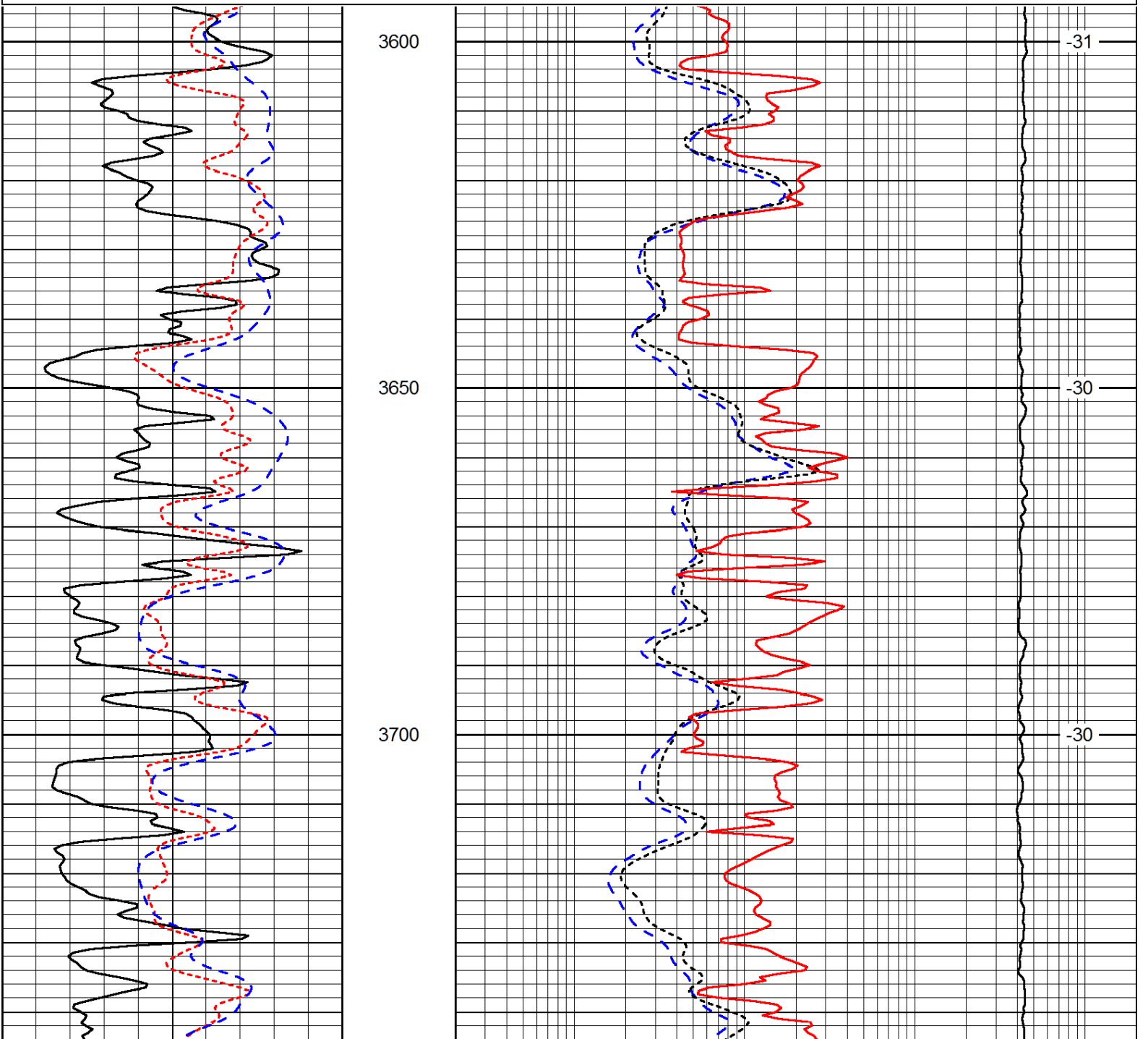
Database File: brito_010212hd.db
 Dataset Pathname: dil/brstack
 Presentation Format: dil
 Dataset Creation: Wed Jan 02 07:16:05 2013
 Charted by: Depth in Feet scaled 1:240

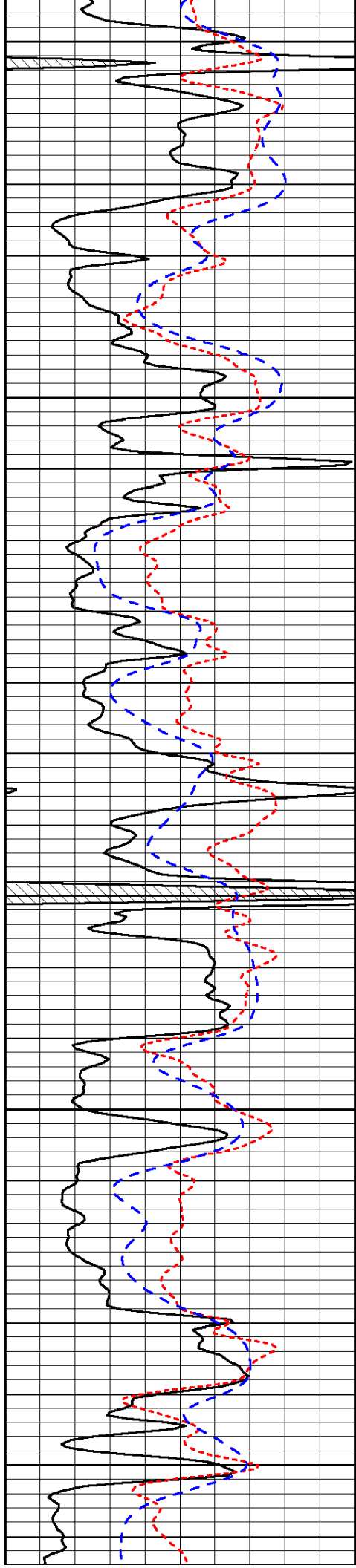


10000	Line Tension (lb)	0
		LSPD (ft/min)

Database File: brito_010212hd.db
 Dataset Pathname: dil/brstack
 Presentation Format: dil
 Dataset Creation: Wed Jan 02 07:16:05 2013
 Charted by: Depth in Feet scaled 1:240

0	Gamma Ray (GAPI)	150	0.2	Deep Resistivity (Ohm-m)	2000
-160	RXO/RT	40	0.2	Medium Resistivity (Ohm-m)	2000
-200	SP (mV)	0	0.2	Shallow Resistivity (Ohm-m)	2000
			10000	Line Tension (lb)	0
					LSPD (ft/min)





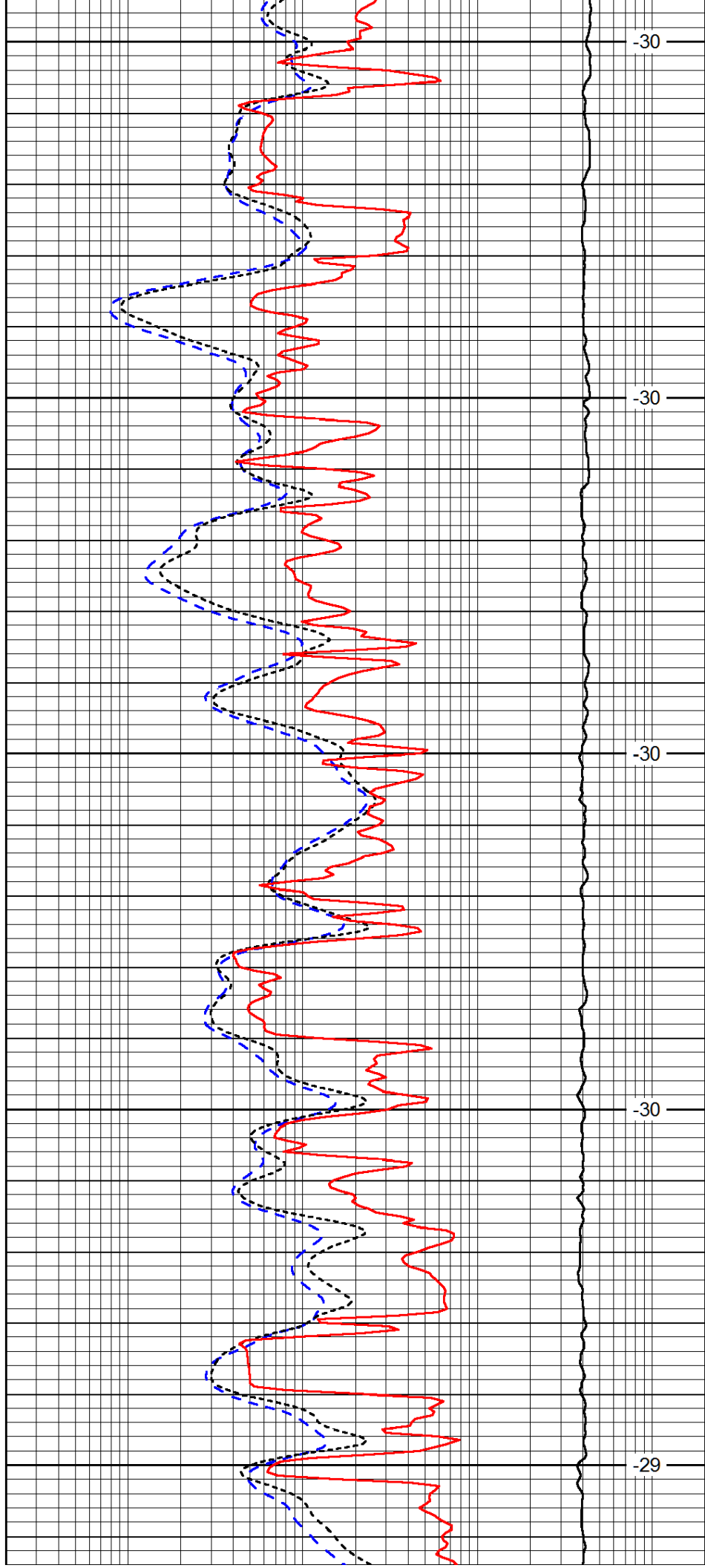
3750

3800

3850

3900

3950



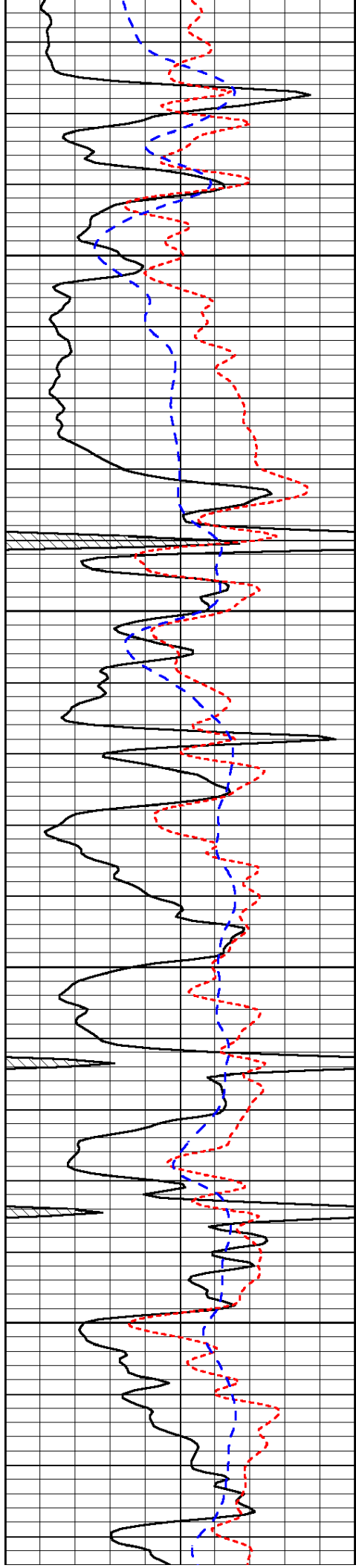
-30

-30

-30

-30

-29

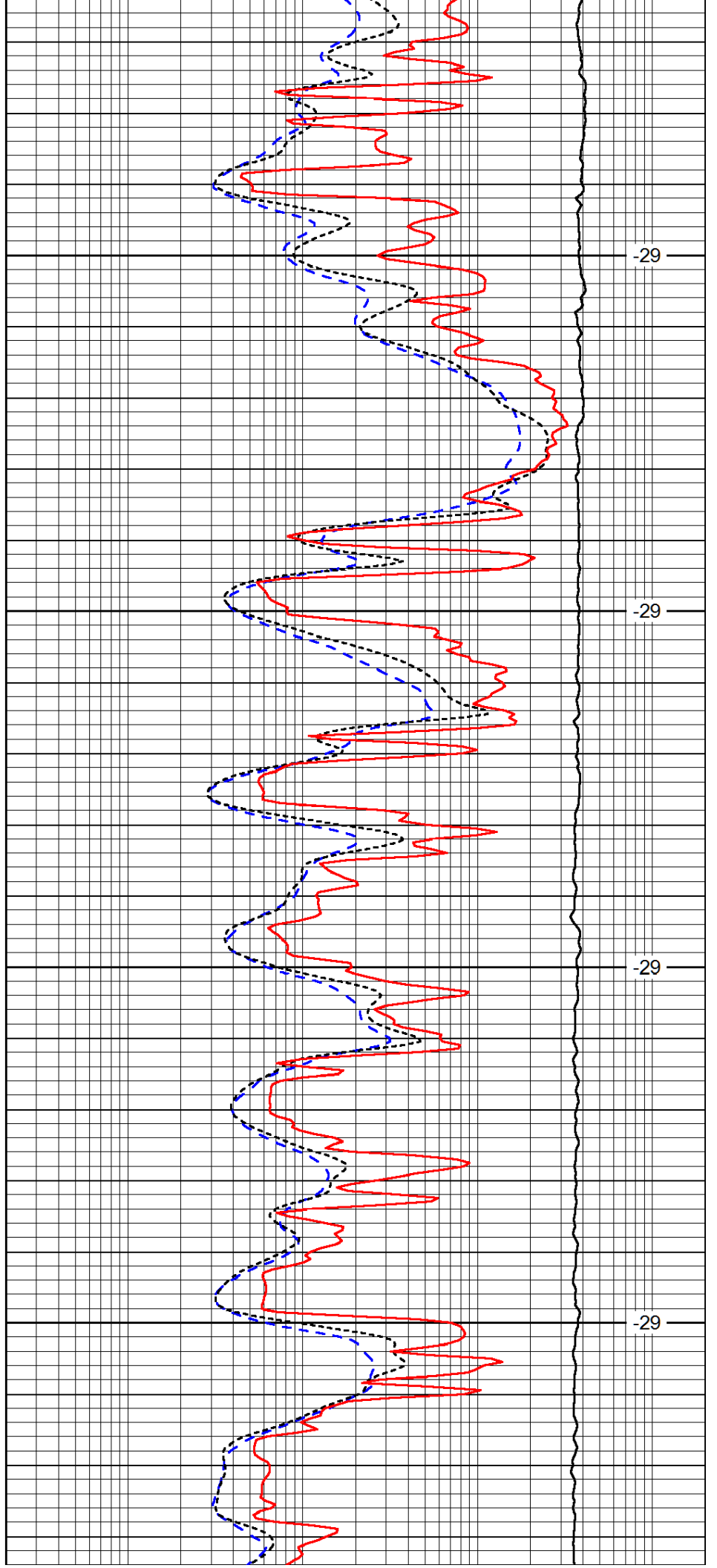


4000

4050

4100

4150

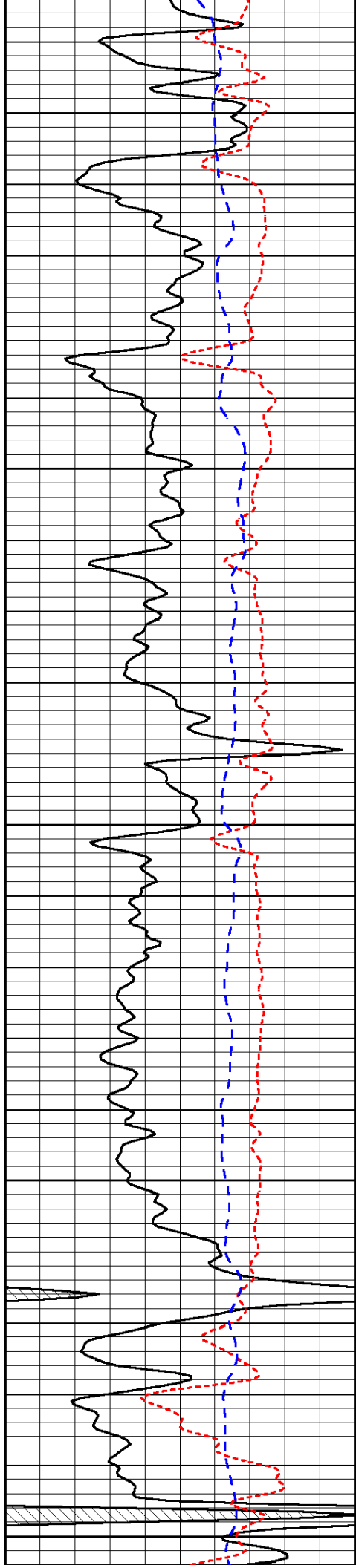


-29

-29

-29

-29



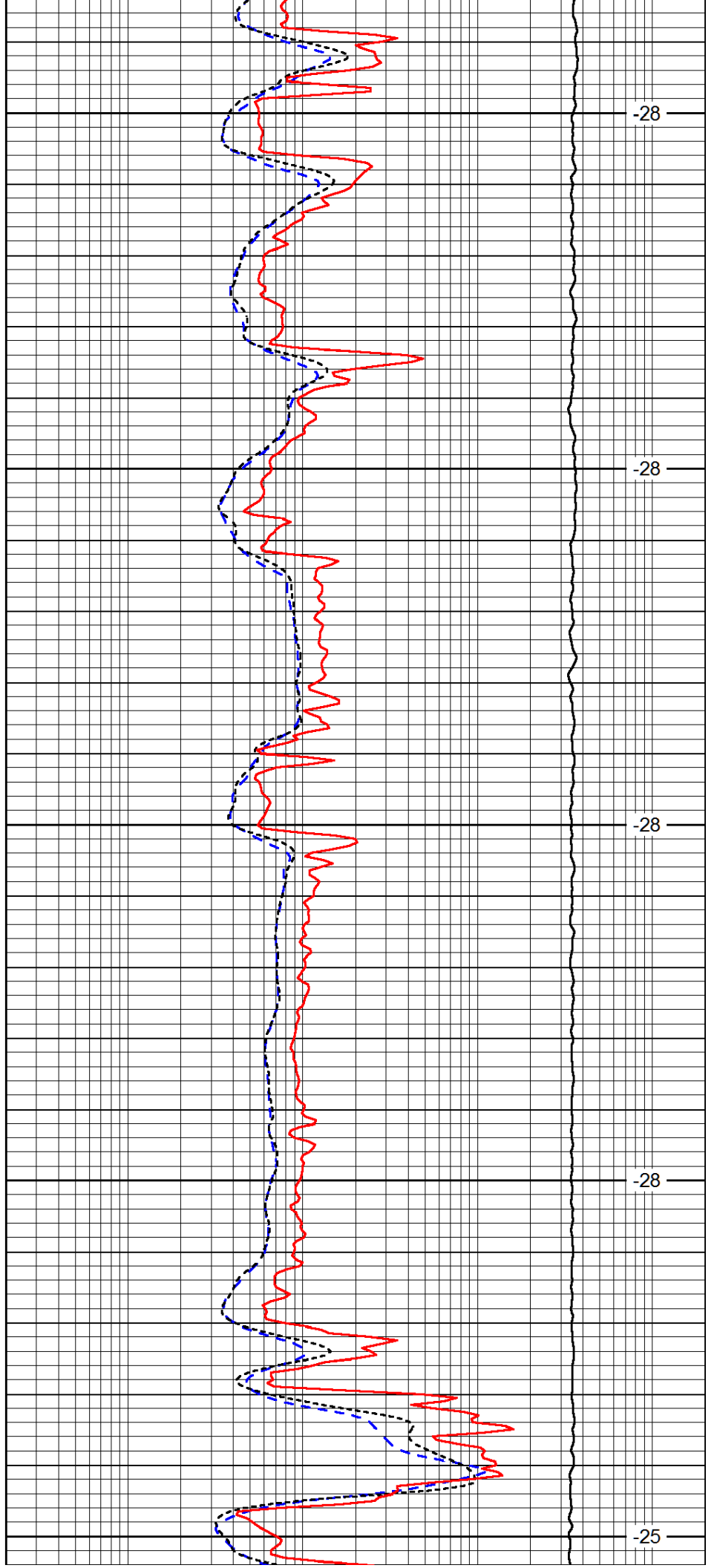
4200

4250

4300

4350

4400



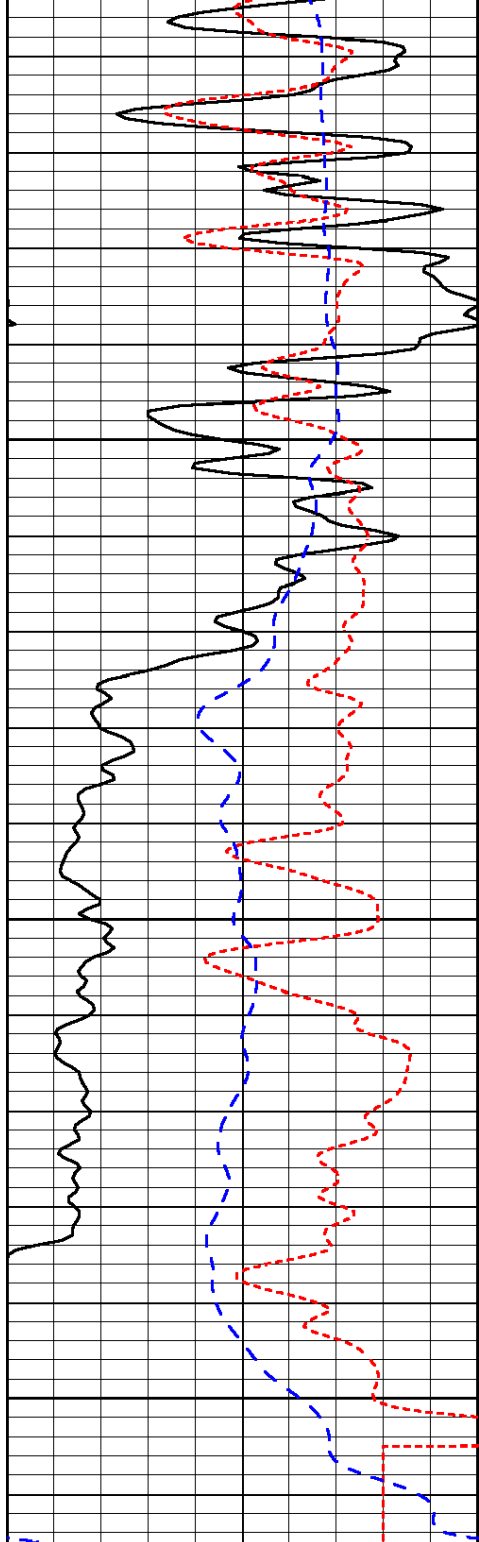
-28

-28

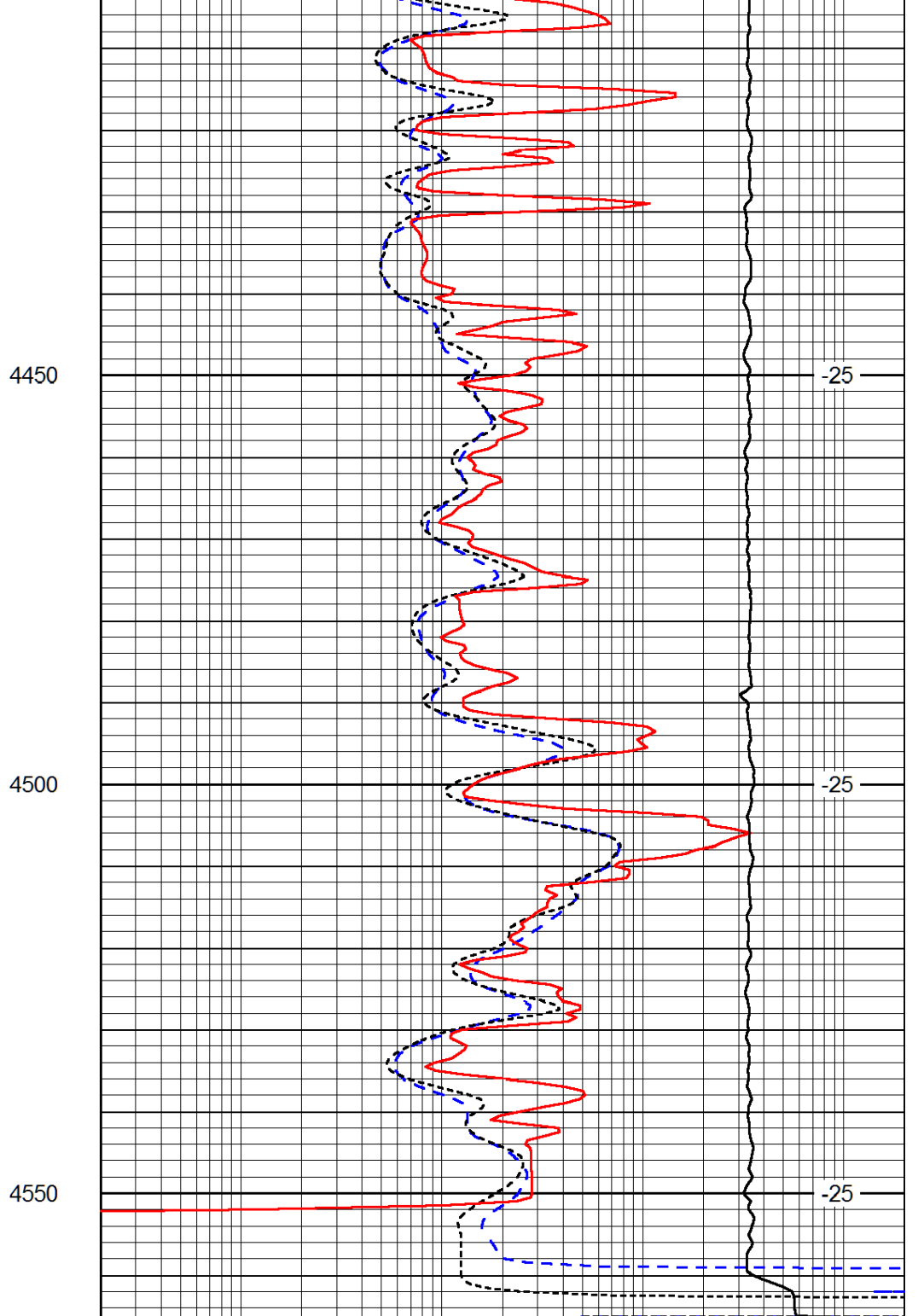
-28

-28

-25



0	Gamma Ray (GAPI)	150
-160	RXO/RT	40
-200	SP (mV)	0



0.2	Deep Resistivity (Ohm-m)	2000
0.2	Medium Resistivity (Ohm-m)	2000
0.2	Shallow Resistivity (Ohm-m)	2000
10000	Line Tension (lb)	0

LSPD
(ft/min)