



Pioneer Energy Services

## Dual Compensated Porosity Log

**Company** Brito Oil Company, Inc.  
**Well** Griebel #1-31  
**Field** Wildcat  
**County** Trego  
**State** Kansas  
**Location** 1527' FNL & 1424' FWL  
**Other Services** DILMEL

**Sec:** 31    **Twp:** 11S    **Rge:** 25W

**Permanent Datum**    **Ground Level**    **Elevation** 2595  
**Log Measured From**    **Kelly Bushing**    **9**    **Ft. Above Perm. Datum**  
**Drilling Measured From**    **Kelly Bushing**

**Elevation**  
**K.B.** 2604  
**D.F.**  
**G.L.** 2595

API No. 15-195-22839-00-00

Date	1/2/2013
Run Number	One
Type Log	CNL / CDL
Depth Driller	4580
Depth Logger	4560
Bottom Logged Interval	4539
Top Logged Interval	3600
Type Fluid In Hole	Chemical
Salinity, PPM CL	1600
Density	9.4
Level	Full
Max. Rec. Temp. F	124
Operating Rig Time	4 Hours
Equipment -- Location	91 Hays
Recorded By	D. Schmidt
Witnessed By	Brad Rine

Borehole Record		Casing Record				
Run No.	Bit From	To	Size	Wgt.	From	To
One	12.25	00	270	8.625	23#	00
Two	7.875	270	TD			270

<<< Fold Here >>>

All interpretations are opinions based on inferences from electrical or other measurements and we cannot and do not guarantee the accuracy or correctness of any interpretation, and we shall not, except in the case of gross or willful negligence on our part, be liable or responsible for any loss, costs, damages, or expenses incurred or sustained by anyone resulting from any interpretation made by any of our officers, agents or employees. These interpretations are also subject to our general terms and conditions set out in our current Price Schedule.

**Comments**

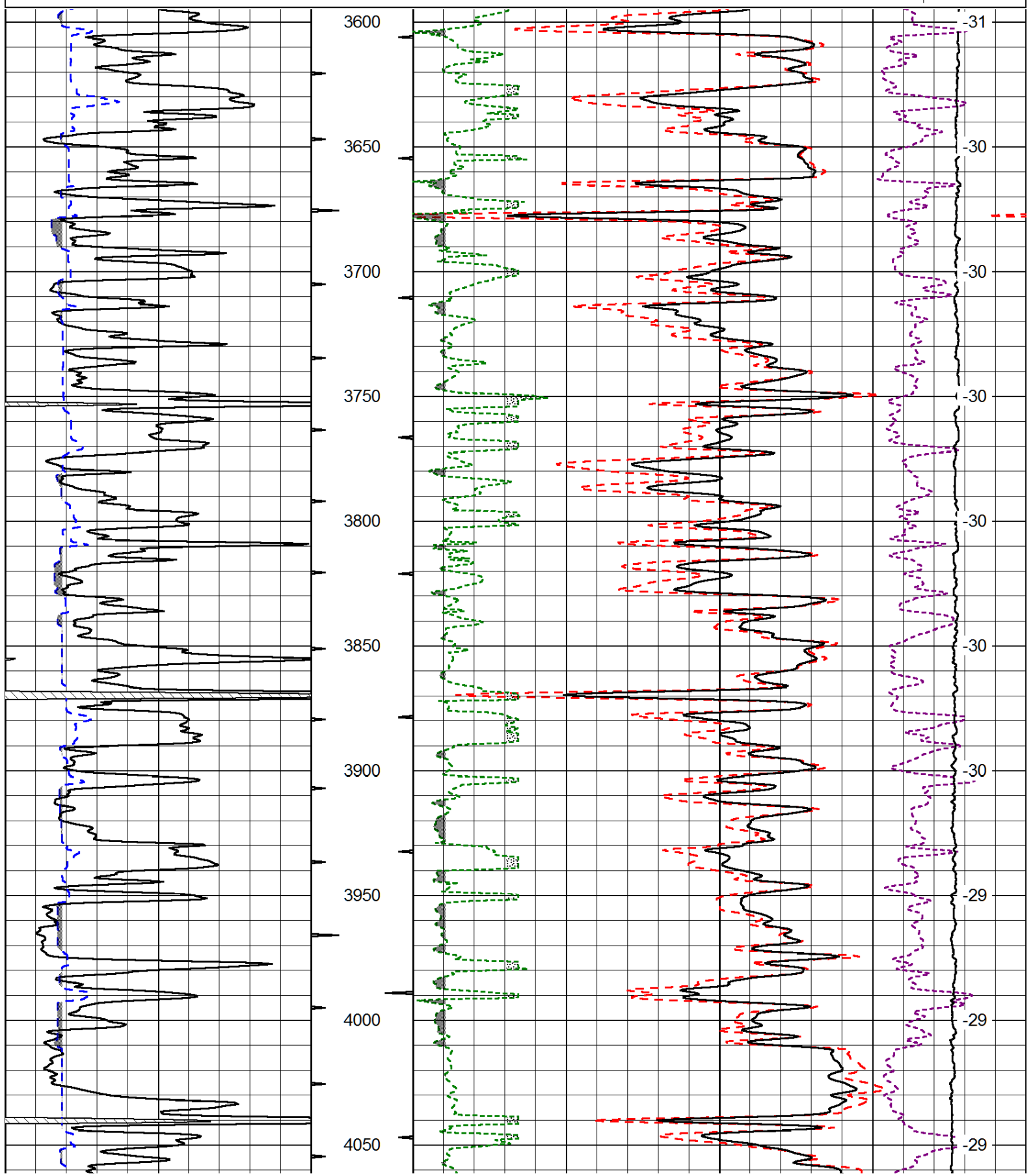
Thank you for using Log-Tech, Inc.  
 (785) 625-3858  
  
 Collyer,  
 North to G Rd, 1 1/2 West, 1/2 North,  
 East into

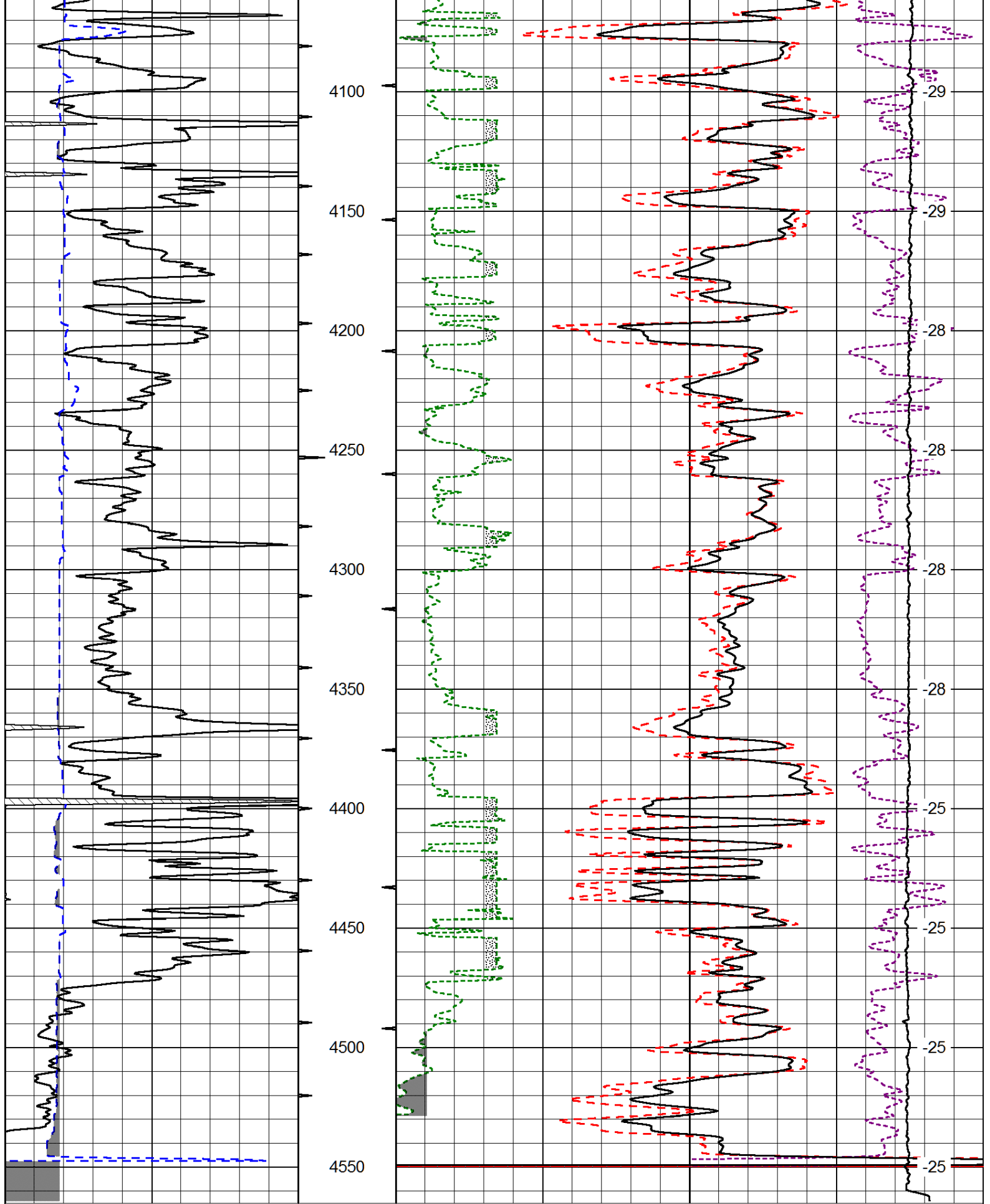
Database File: brito\_010212hd.db  
 Dataset Pathname: dil/brstack  
 Presentation Format: cdl  
 Dataset Creation: Wed Jan 02 07:16:05 2013  
 Charted by: Depth in Feet scaled 1:600

0	Gamma Ray (GAPI)	150
6	Caliper (in)	16

30	Compensated Density (pu)			-10	
2	Bulk Density (g/cc)			3	
15000	Line Tension (lb)			0	
2.625	DGA (g/cc)	3.425	-0.25	Correction (g/cc)	0.25

LSPD  
(ft/min)





0	Gamma Ray (GAPI)	150
6	Caliper (in)	16

30	Compensated Density (pu)	-10
2	Bulk Density (g/cc)	3

15000	Line Tension (lb)	0			
2.625	DGA (g/cc)	3.425	-0.25	Correction (g/cc)	0.25

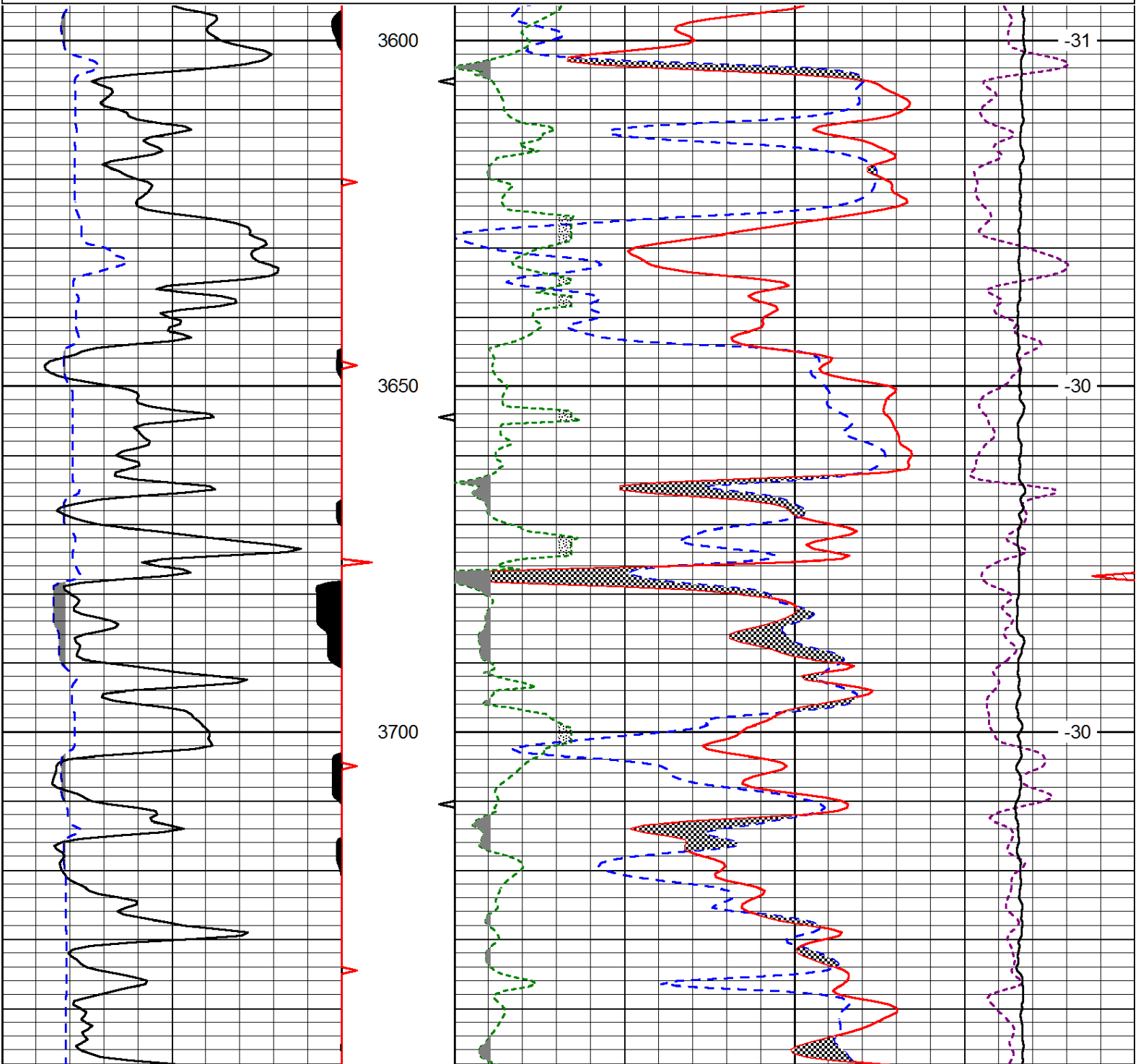
LSPD  
(ft/min)

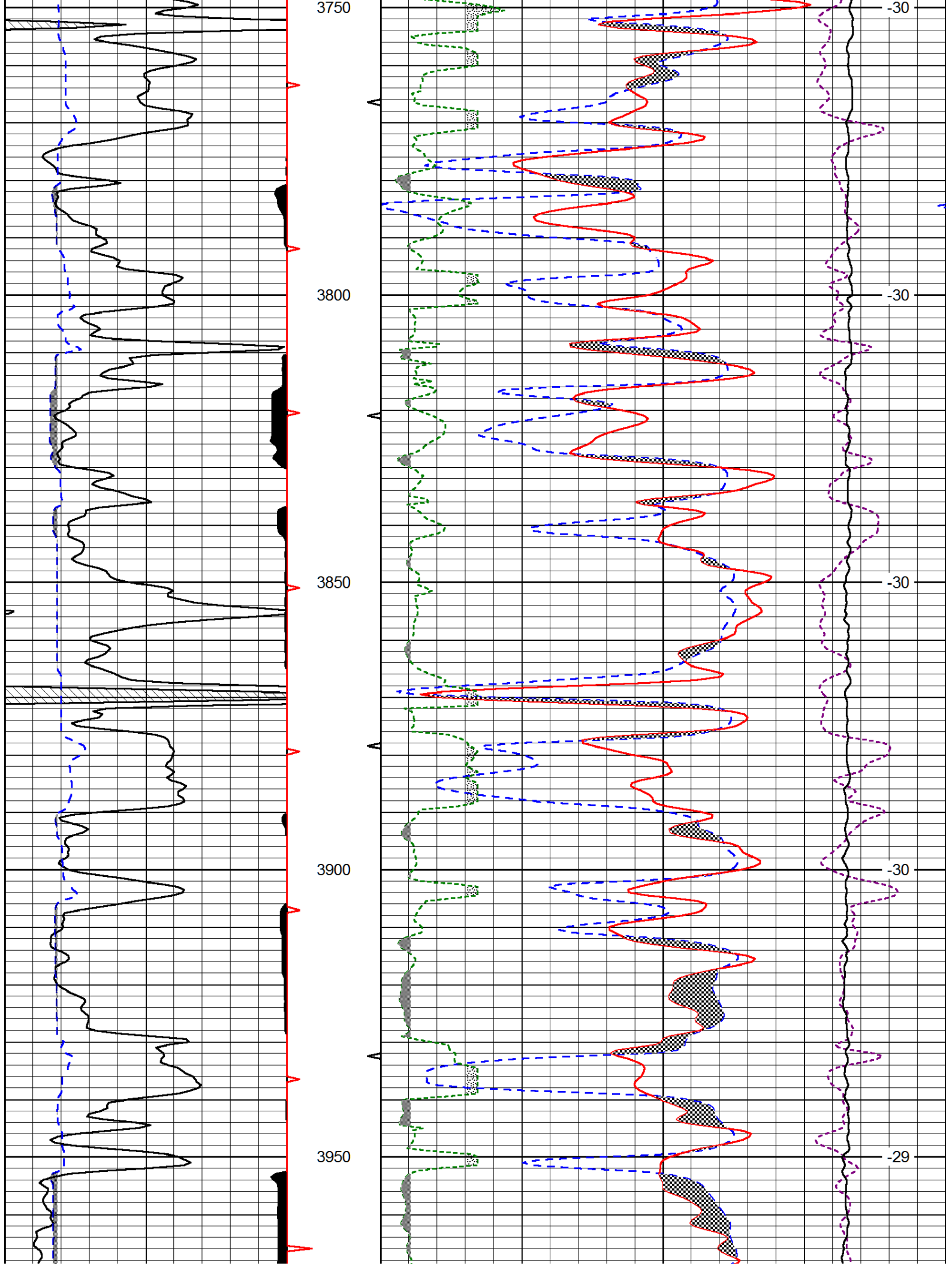
Database File: brito\_010212hd.db  
 Dataset Pathname: dil/brstack  
 Presentation Format: cndlspec  
 Dataset Creation: Wed Jan 02 07:16:05 2013  
 Charted by: Depth in Feet scaled 1:240

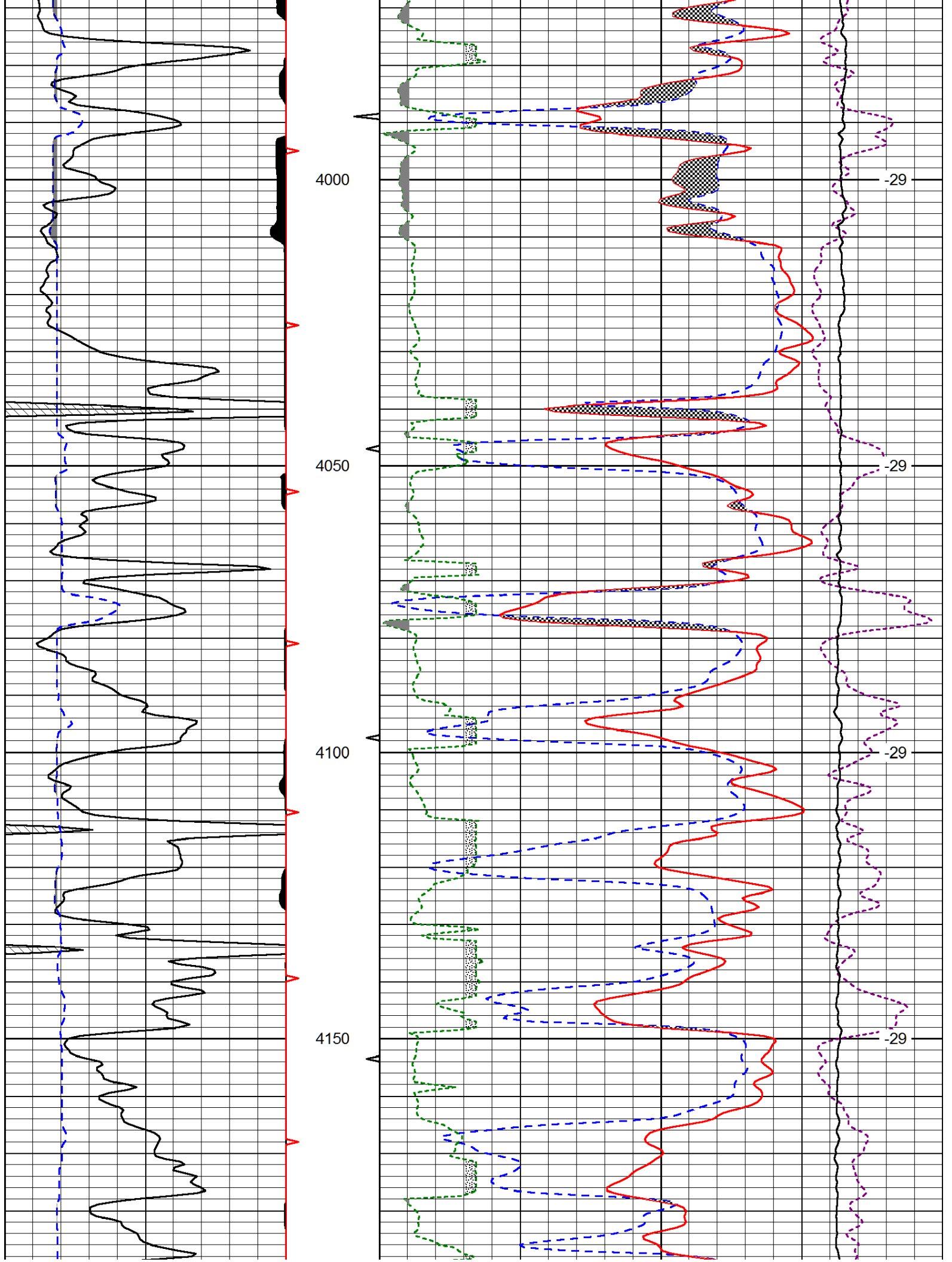
0	Gamma Ray (GAPI)	150
6	Caliper (in)	16

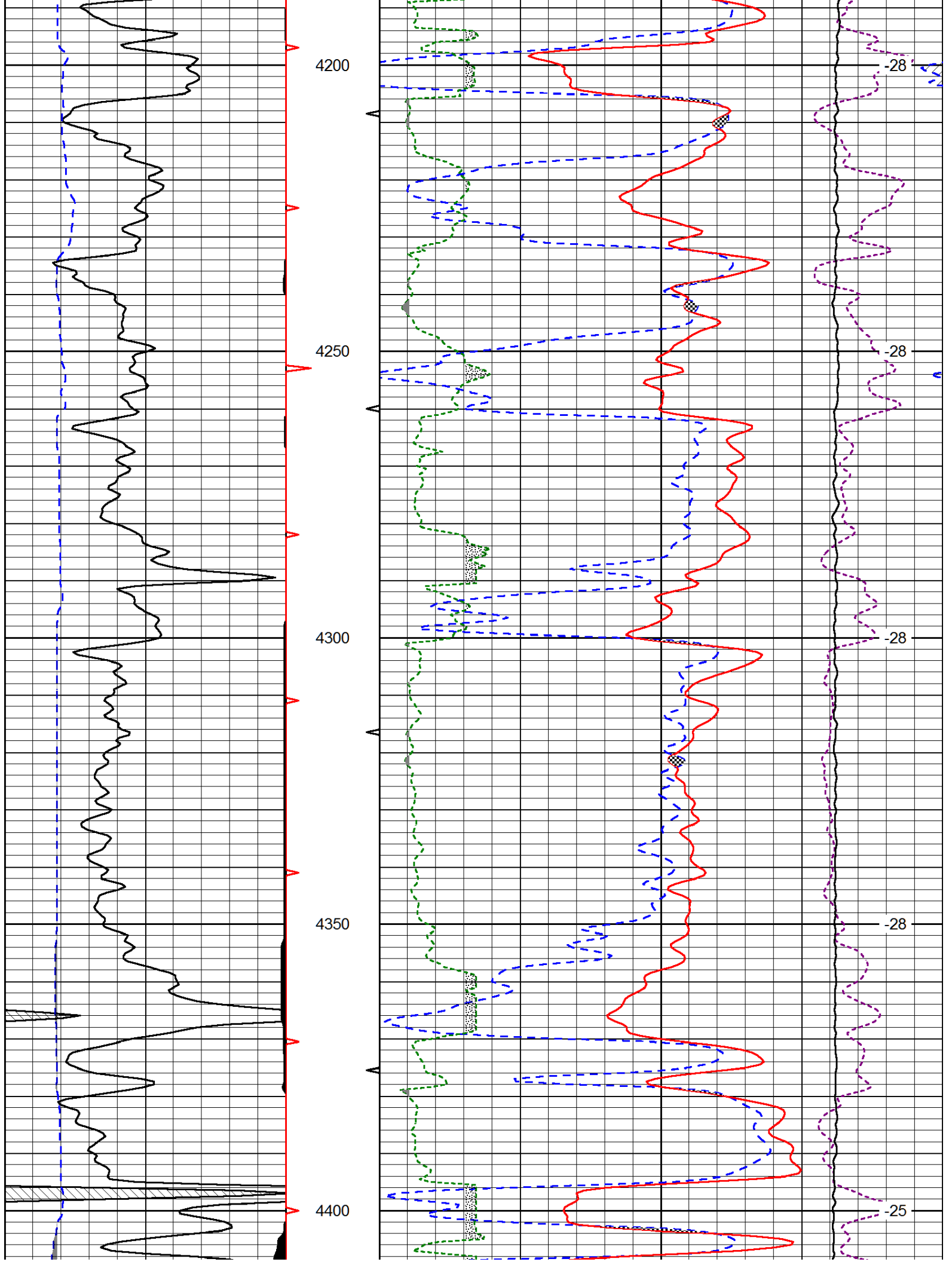
30	CNLS (pu)			-10	
30	Compensated Density (2.71 ma) (pu)			-10	
2.625	DGA (g/cc)	3.425	-0.25	Correction (g/cc)	0.25
10000	Line Tension (lb)			0	

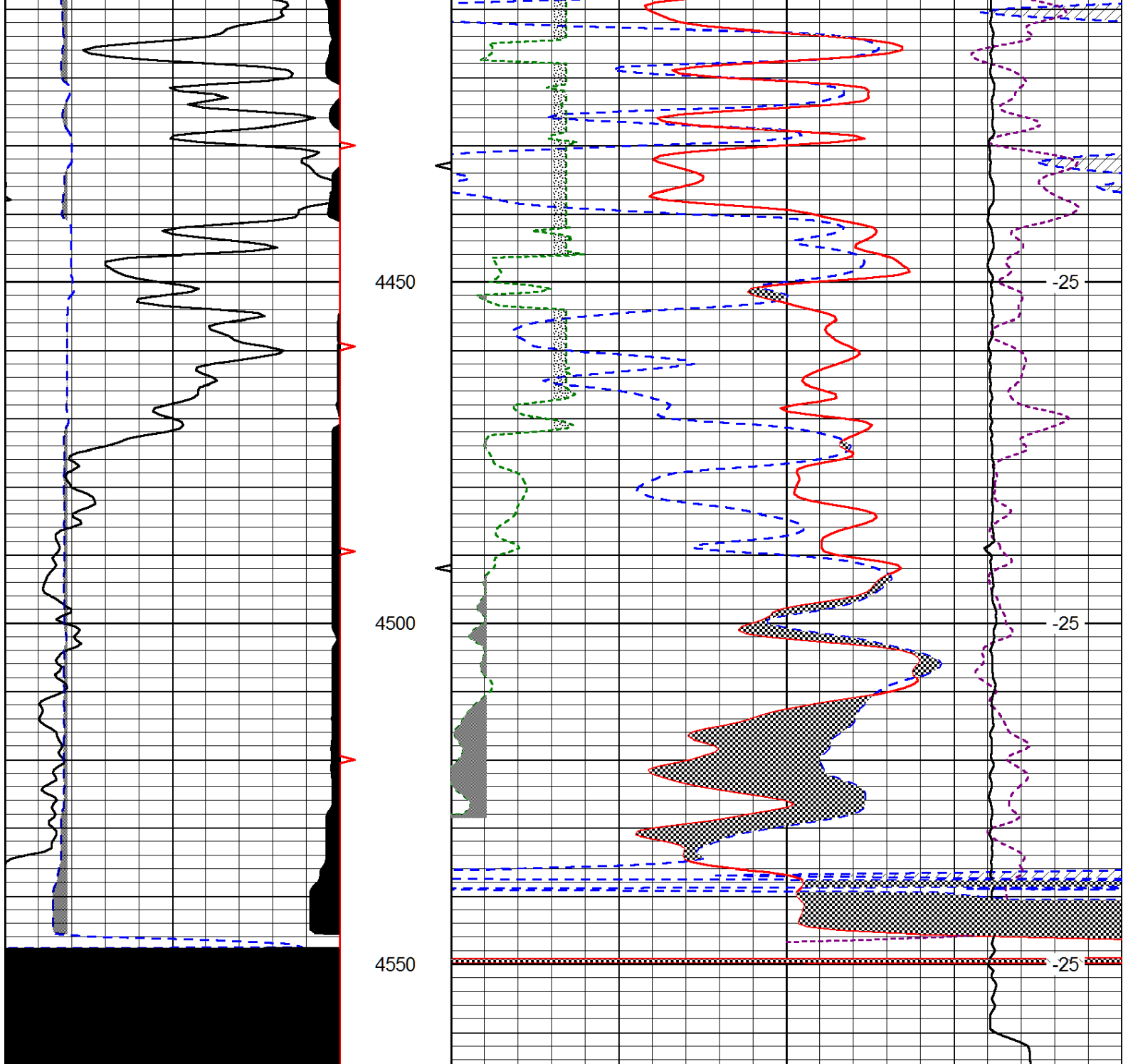
LSPD  
(ft/min)











0	Gamma Ray (GAPI)	150
6	Caliper (in)	16

30	CNLS (pu)			-10	
30	Compensated Density (2.71 ma) (pu)			-10	
2.625	DGA (g/cc)	3.425	-0.25	Correction (g/cc)	0.25
10000	Line Tension (lb)			0	

LSPD  
(ft/min)